

Report CO₂ Emissions to ICAO

ICAO Secretariat

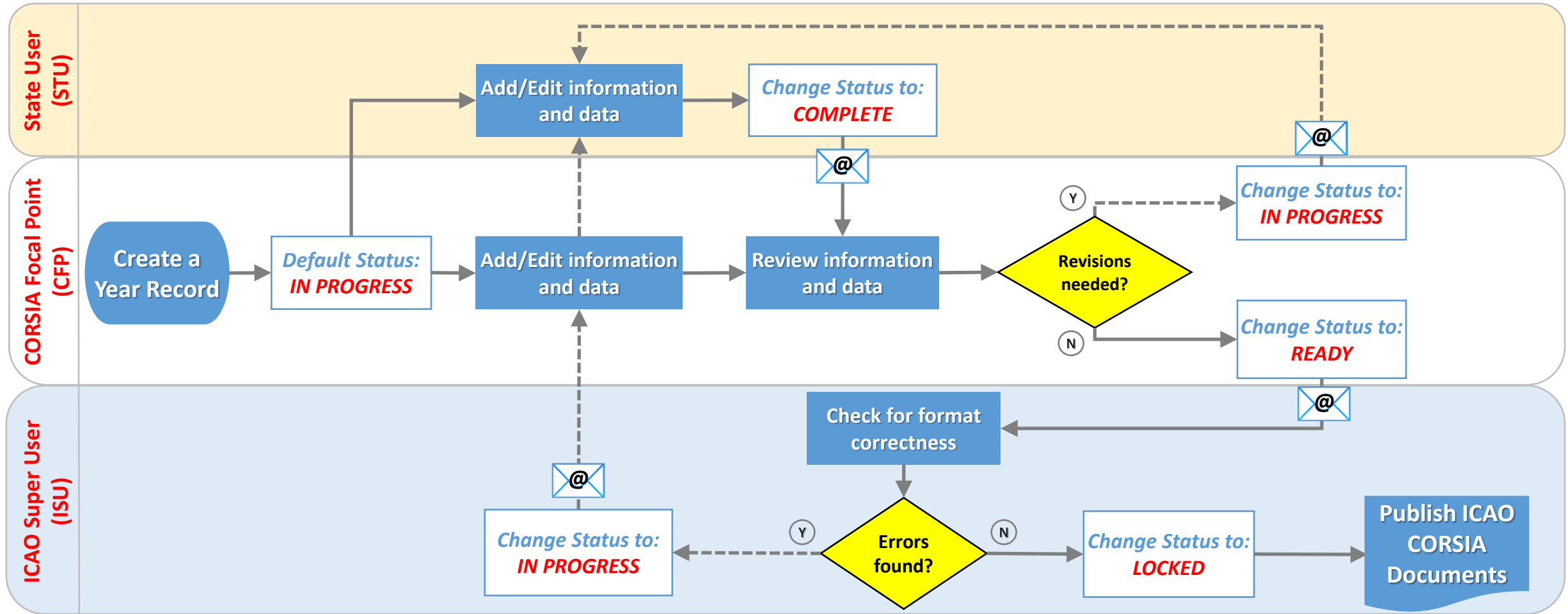


Important 2020 Dates for States

- **By 31 August 2020:**
 - Submit CO₂ emissions data (*for 2019*) to ICAO

- **By 30 November 2020:**
 - Submit updates to ICAO regarding the:
 - List of aeroplane operators attributed to the State (*for 2021*)
 - List of verification bodies accredited in the State (*for 2021*)

CCR Dataflow Process



@ Automatic email notification

IMPORTANT !!!



REPORTING ON CO₂ EMISSIONS (2019 and 2020)

According to Annex 16, Volume IV, Part II, Chapter 2, 2.3.2.2, for the years 2019 and 2020, each "State shall submit a report to ICAO" that contains the total annual CO₂ emissions per State pair aggregated for all aeroplane operators attributed to the State (in tonnes) as per Appendix 5, Table A5-4. For the purposes of the CCR, information on CO₂ emissions must be provided in separate fields as shown below.

Information on CO₂ Emissions (mandatory fields are shown with a *)

For each State pair:

- From (Departing State)*
- To (Arrival State)*
- CO₂ Emissions*
- Confidential Data

Reporting Deadline

By 31 August of each year

Reporting Tips

- Starting in 2020, each year, submit to ICAO (through the CCR) CO₂ emissions for the previous year
- "CO₂ Emissions" are the total aggregated emissions on a State pair for all aeroplane operators attributed to your State; the value (in tonnes of CO₂) must be positive and you can provide up to two decimal points
- Annex 16, Volume IV define a State pair as a "group of two States composed of a departing State or its territories and an arrival State or its territories"
 - For two States (e.g., State A and State B) emissions for the State pair A-B must be provided separately from the emissions for the State pair B-A
- When CO₂ emissions are considered as confidential, you can indicate this by clicking on the tick box or by selecting TRUE in a dropdown menu
- In addition to the information above, you can use the Remarks field to provide additional information about the CO₂ emissions for a specific year record

For a general overview of the CCR, refer to **CORSIA AT A GLANCE SERIES LEAFLETS 6 & 7**



REPORTING PROCESS



Create Year Record – FOR CORSIA FOCAL POINT ONLY



On the "Report CO₂ Emissions" List page, click on "Add", then:

OPTION 1: Create an Empty Year Record

- Select "Quick Add"
- Select the reporting year
- Click on "Create"

OPTION 2: Copy from an Existing Year Record

- Select "Copy From", then "Other Reporting Year"
- Select the existing year record
- Select the new reporting year
- Click on "Create"

Add or Edit CO₂ Emissions



On the "Report CO₂ Emissions" List page, select the year record by clicking on the pencil icon next to it

To add CO₂ emissions for State pairs:

Select the "CO₂ Emissions (State Pairs)" tab of the year record, then:

OPTION 1: Add Manually

- Click on "Add", then "Full Add"
- Complete information on web form
- Click on "Create"
- Repeat as needed

OPTION 2: Import CSV file

- Click on "Tools", then "Import CSV"
- Locate the CSV file on your computer
- Click on "Upload"
- Click on "Confirm and Continue Import"

To edit CO₂ emissions for State pairs:

- Select the "CO₂ Emissions (State Pairs)" tab of the year record
- Select the State pair you want to edit by clicking on the pencil icon next to it
- Make changes on the web form that will appear on your screen
- Click on "Save"

After having finished adding and editing CO₂ emissions:

- Select the "Details" tab of the year record
- Under "Data Status", select "COMPLETE"
- Click on "Save"

Submit to ICAO – FOR CORSIA FOCAL POINT ONLY



On the "Report CO₂ Emissions" List page, select the year record by clicking on the pencil icon next to it

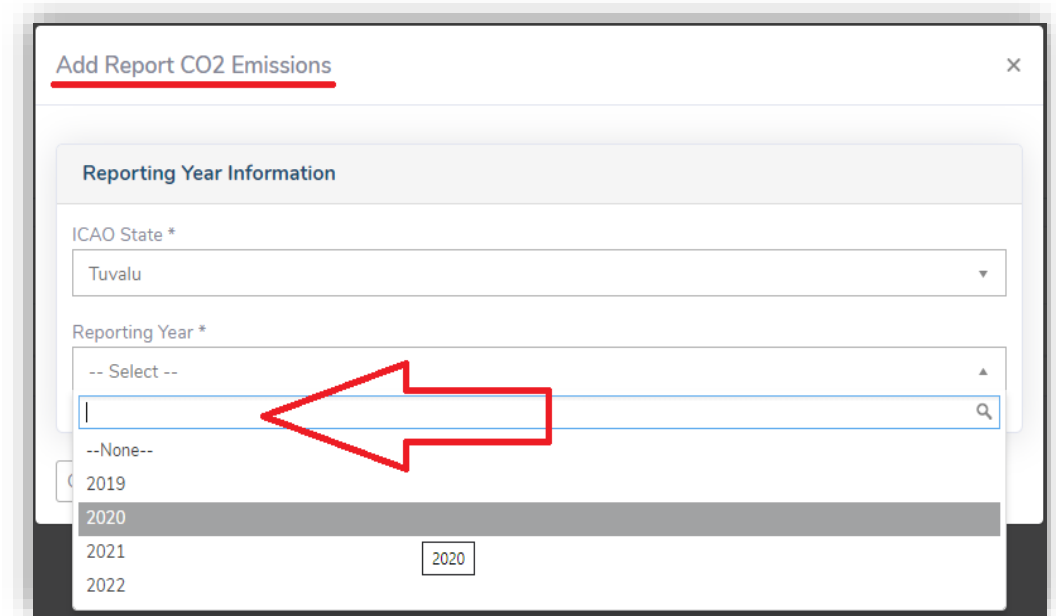
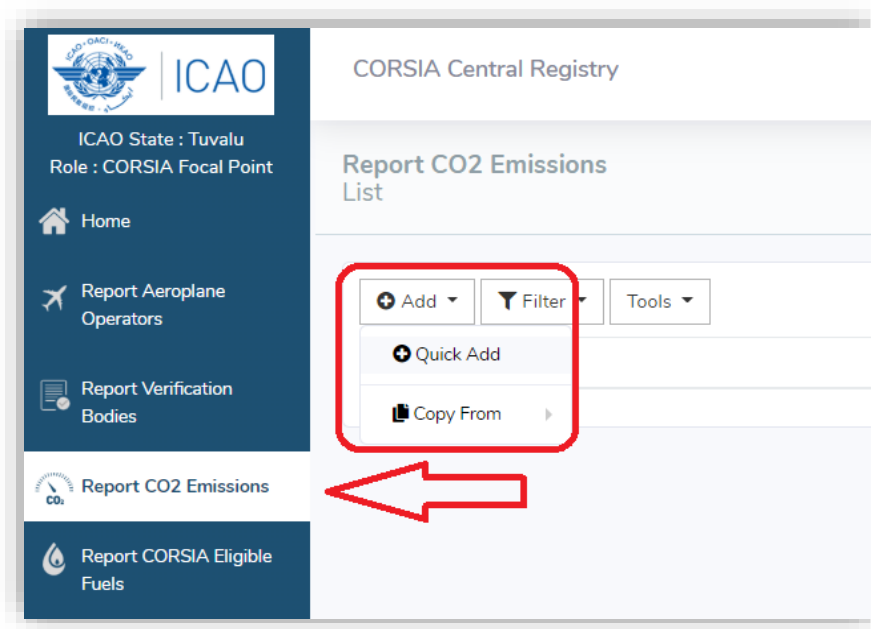
- Select the "Details" tab of the year record
- Under "Data Status", select "READY"
- Click on "Save"



CCR Live Demonstration CO₂ Emissions

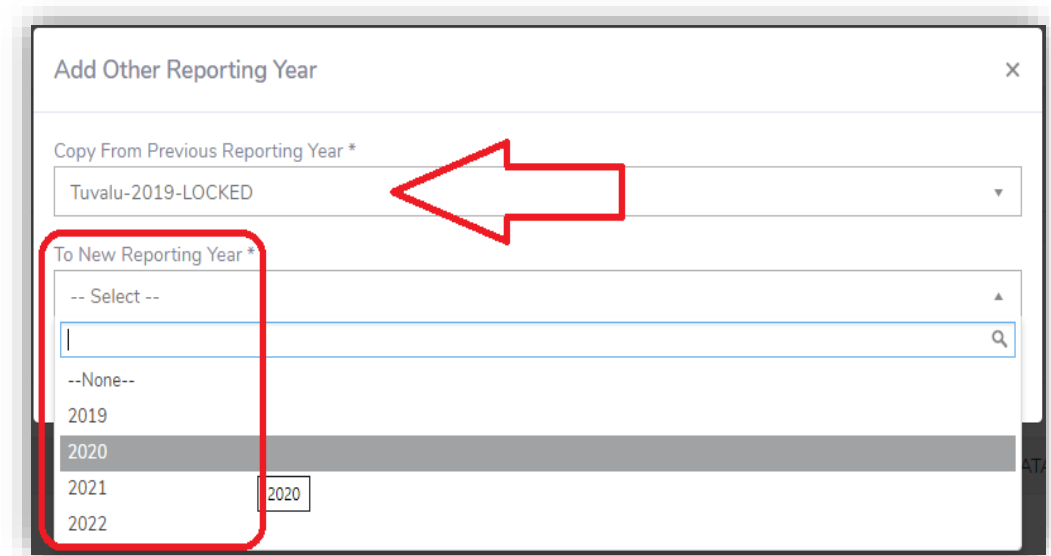
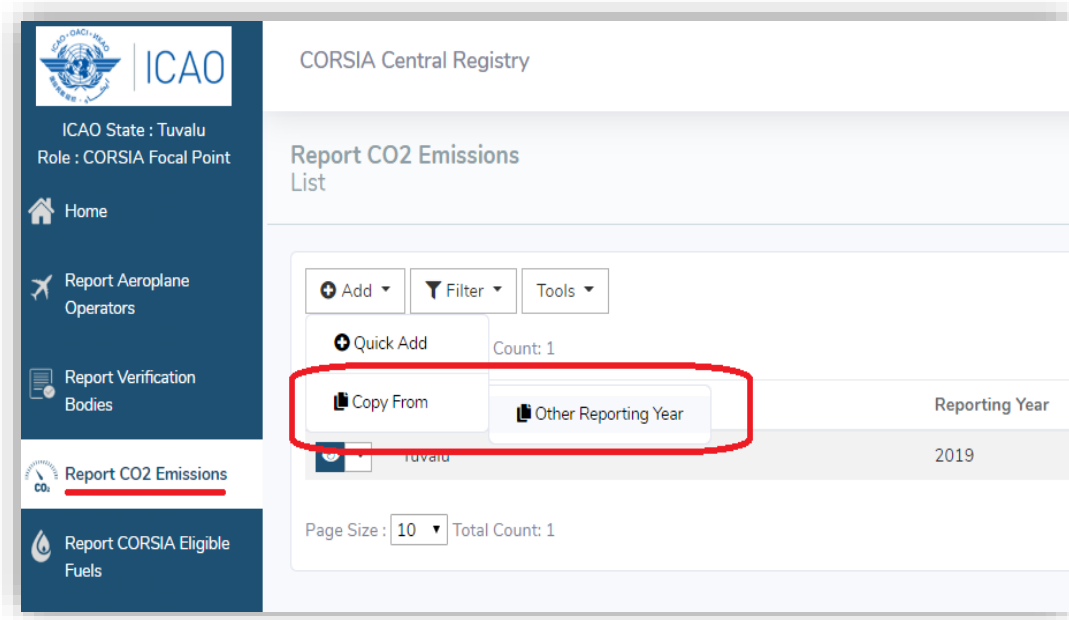
Create a Year Record – Option 1

- Option 1: Create an empty new year record:
 - Sequence: 'Add' => 'Quick add'



Create a Year Record –Option 2

- Option 2: Create a new year record based on an existing one:
 - Sequence: ‘Add’ => ‘Copy from’ and ‘Other Reporting Year’



Open an Existing Year Record

- Tab options after selecting a Year Record:
 - 'Details'
 - 'CO₂ Emissions (State Pairs)'
 - ~~'CO₂ Emissions (Aeroplane Operators)'~~ *not active for 2019 and 2020*
 - 'CO₂ Emissions Data Journal'

Report CO2 Emissions
Edit - Tuvalu-2019-IN PROGRESS

Details | CO2 Emissions (State Pairs) 0 | CO2 Emissions (Aeroplane Operators) 0 | CO2 Emissions Data Journal

Reporting Year Information

ICAO State * Tuvalu

Reporting Year 2019

Total CO2 Emissions (in tonnes)

	State Pairs	Aeroplane Operators
Total Subject to Offsetting Requirements	NA	NA
Total Exempt from Offsetting Requirements	NA	NA
Total CO2 Emissions	0.00	NA

Add Information and Data (1/3)

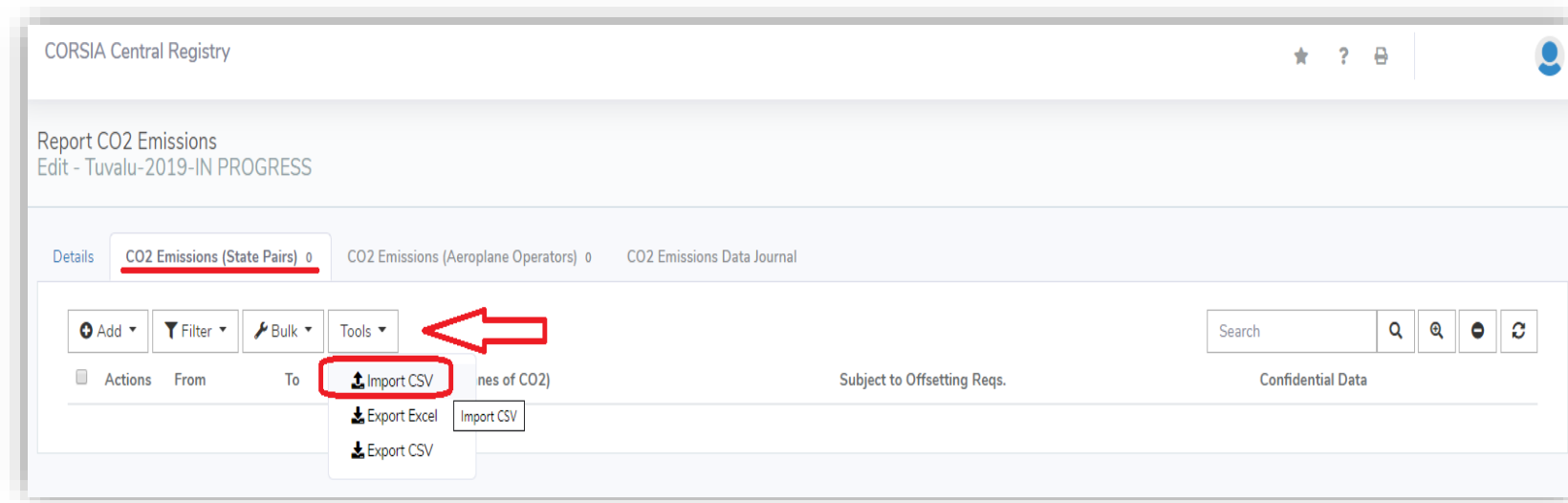
- Add Information for CO₂ Emissions (State Pairs):
 - Option 1: Manual entry
 - Sequence: 'Add' => 'Full Add'

The image displays two screenshots of the CORSIA Central Registry web application interface.

The left screenshot shows the main dashboard for 'Report CO2 Emissions' for 'Tuvalu-2019-IN PROGRESS'. A red box highlights the 'Add' dropdown menu, which is open to show the 'Full Add' option. Other options include 'Add', 'Filter', 'Bulk', and 'Tools'. Below the dropdown, there are fields for 'From', 'To', and 'CO2 Emissions (tonnes of CO2)', along with a 'Full Add' button.

The right screenshot shows the 'Create - Add CO2 Emissions (State Pairs) - Tuvalu-2019-IN PROGRESS' form. A red box highlights the 'Enter CO2 Emissions Data (in tonnes)' section, which contains dropdown menus for 'From' and 'To', a text input for 'CO2 Emissions (tonnes of CO2)', and a checkbox for 'Confidential Data'. Below this section is a 'Record Updates' table. At the bottom, there are buttons for 'Cancel', 'Create', 'Create & Continue', and 'Create & Add another', with a red arrow pointing to the 'Create & Add another' button.

- Add Information for CO₂ Emissions (State Pairs):
 - Option 2: Import Information from a CSV file
 - Sequence: 'Tools' => 'Import CSV'
 - Using a template CSV file



	A	B	C	D
1	From	To	CO2 Emissions (tonnes of CO2)	Confidential Data
2				

Add Information and Data (3/3)

- Add Information for CO₂ Emissions (State Pairs):
 - Tip: ‘Subject to Offsetting Requirements’ will be automatically set to ‘N/A’ (not applicable) for the years 2019 and 2020

Report CO2 Emissions
Edit - Tuvalu-2019-IN PROGRESS

Details **CO2 Emissions (State Pairs) 10** CO2 Emissions (Aeroplane Operators) 0 CO2 Emissions Data Journal

Page Size: 10 Total Count: 10

Actions	From	To	CO2 Emissions (tonnes of CO2)	Subject to Offsetting Reqs.	Confidential Data
<input type="checkbox"/>	Tuvalu	Afghanistan	100.00	N/A	False
<input type="checkbox"/>	Tuvalu	Belgium	100.00	N/A	False
<input type="checkbox"/>	Tuvalu	United States	100.00	N/A	False
<input type="checkbox"/>	Tuvalu	Brazil	100.00	N/A	False
<input type="checkbox"/>	Tuvalu	Chile	100.00	N/A	False
<input type="checkbox"/>	Tuvalu	France	100.00	N/A	False
<input type="checkbox"/>	Tuvalu	Russian Federation	100.00	N/A	False
<input type="checkbox"/>	Tuvalu	Ecuador	100.00	N/A	False
<input type="checkbox"/>	Tuvalu	Uruguay	100.00	N/A	False
<input type="checkbox"/>	Tuvalu	Panama	100.00	N/A	False

Page Size: 10 Total Count: 10

- Edit Information for CO₂ Emissions (State Pairs):
 - Sequence: 'Select the year record' => 'CO₂ Emissions (State Pairs) tab => 'pencil icon'

Report CO2 Emissions
Edit - Tuvalu-2019-IN PROGRESS

Details **CO2 Emissions (State Pairs) 10** CO2 Emissions (Aeroplane Operators) 0 CO2 Emissions Data Journal

Page Size: 10 Total Count: 10

Actions	From	To	CO2 Emissions (tonnes of CO2)	Subject to Offsetting Reqs.	Confidential Data
<input type="checkbox"/>	Tuvalu	Afghanistan	100.00	N/A	False
<input type="checkbox"/>	Tuvalu	Belgium	100.00	N/A	False
<input type="checkbox"/>	Tuvalu	United States	100.00	N/A	False
<input type="checkbox"/>	Tuvalu	Brazil	100.00	N/A	False
<input type="checkbox"/>	Tuvalu	Chile	100.00	N/A	False
<input type="checkbox"/>	Tuvalu	France	100.00	N/A	False
<input type="checkbox"/>	Tuvalu	Russian Federation	100.00	N/A	False
<input type="checkbox"/>	Tuvalu	Ecuador	100.00	N/A	False
<input type="checkbox"/>	Tuvalu	Uruguay	100.00	N/A	False
<input type="checkbox"/>	Tuvalu	Panama	100.00	N/A	False

Page Size: 10 Total Count: 10

- Changing the Status of a Year Record:
 - On ‘Details’ tab of ‘Report CO₂ Emissions’
 - Sequence: ‘Data Status’ => select a new status of report => ‘Save’

Report CO₂ Emissions
Edit - Tuvalu-2019-IN PROGRESS

Details CO₂ Emissions (State Pairs) CO₂ Emissions (Aeroplane Operators) CO₂ Emissions Data Journal

Reporting Year Information

ICAO State * Tuvalu
Reporting Year 2019

Total CO₂ Emissions (in tonnes)

	State Pairs	Aeroplane Operators
Total Subject to Offsetting Requirements	NA	NA
Total Exempt from Offsetting Requirements	NA	NA
Total CO ₂ Emissions	0.00	NA

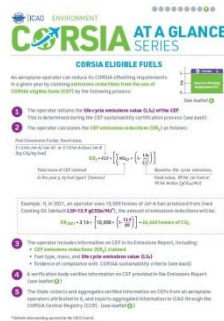
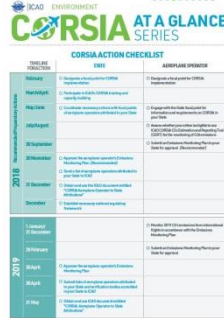
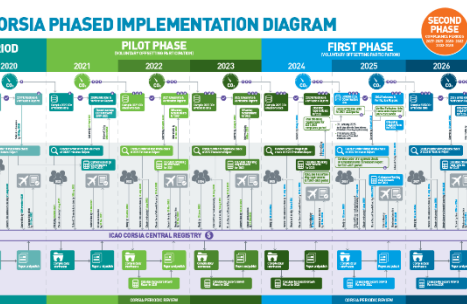
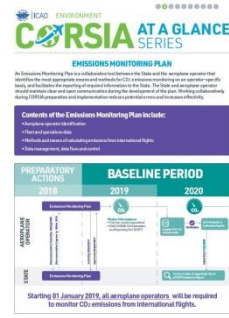
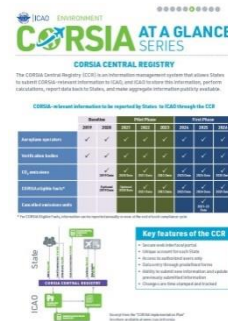
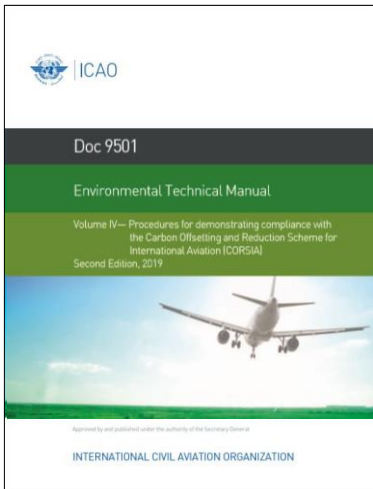
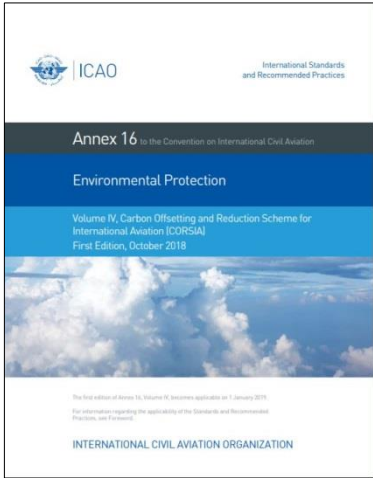
Data Status

IN PROGRESS
1/29/2020 11:31:26 AM

Data Status IN PROGRESS

Remarks

Cancel Save Save & Stay Add



- ENV Homepage
- CORSIA Homepage
- CORSIA IMPLEMENTATION
- ACT CORSIA

Carbon Offsetting and Reduction Scheme for International Aviation (CORSIA)

CORSIA News (click here to consult the complete list)

January 2020

Colombia received training under Phase Two ACT-CORSIA Buddy Partnership with Italy

CORSIA IMPLEMENTATION

- Assembly Resolution A40-19
- Reservation to Resolution A40-19
- SARPs - Annex 16 Volume IV
- Environmental Technical Manual - Volume IV
 - Templates
- ICAO CORSIA Implementation Elements
 - CORSIA States for Chapter 3 State Pairs
 - ICAO CORSIA CO₂ Estimation and Reporting Tool (CERT)
 - CORSIA Eligible Fuels
 - CORSIA Eligible Emissions Units
 - CORSIA Central Registry (CCR)

ACT CORSIA

- CORSIA Buddy Partnerships
- Model Regulations
- Frequently Asked Questions
- Brochure and Leaflets
- Videos
- Seminars
- Online Tutorials
- Background Information

Additional Material for CORSIA Implementation



For more information, please visit our website: <http://www.icao.int/corsia>