

APPENDIX - D

Air traffic statistics of the EUR-SAM Corridor during 2016 and air traffic evolution since 2014

JANUARY 2016

	TOTAL	RANDOM AREA	% EURSAM	UN741	UN866	UN873	UN857	TRANSVERSAL
CANARIES FIR	2355	210	91.1%	144	372	1259	370	-
SAL OCEANIC FIR	3635	1152	68.3%	142	370	1324	249	398
DAKAR OCEANIQUE FIR	3218	1578	51.0%	341	340	661	251	47
ATLANTICO FIR	3871	2236	42.2%	339	316	667	253	60

Next table shows the statistic of flights per ACC and ATS Routes for January 2016.



Scope



The necessary flight plan information to perform this study is obtained from Palestra (ENAIRES's data base):

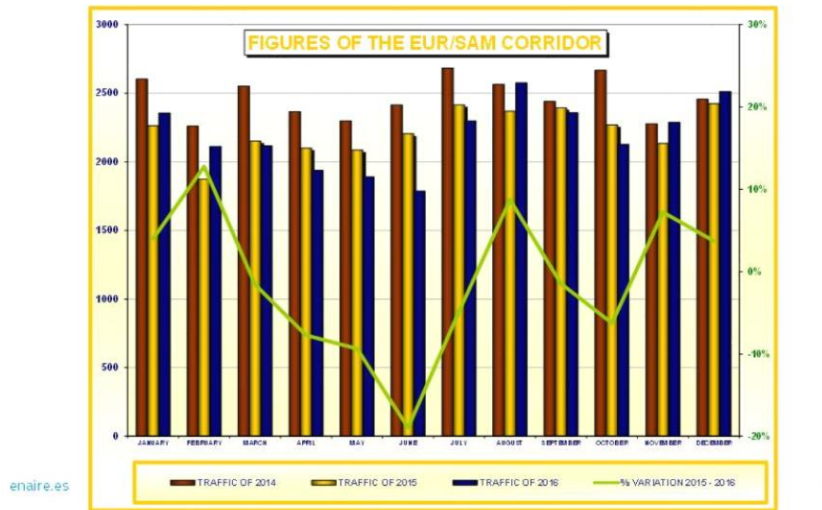
- This flight plan data contains initial flight plan information that is updated by radar and controllers with pilot position reports.
- The air traffic movements reflected in this study are:
 - All traffics using UN741, UN866, UN873 and UN857 whose flight plans contains information about EDUMO, TENPA, IPERA and GUNET fix points.
 - Traffic using the random route.
- This study does not reflect:
 - Traffic not overflying canaries FIR/UIR.
 - Data from east-west flows crossing the EUR-SAM corridor.
 - Southbound traffic to/ from Cape Verde.

Global figures of the EUR/SAM corridor



MONTH	SOUTHBOUND		NORTHBOUND		TOTAL TRAFFIC IN THE CORRIDOR				% VARIATION			
	2015	2016	2015	2016	2014	DAILY	2015	DAILY	2016	DAILY	2014 - 2015	2015 - 2016
JANUARY	983	1188	1281	1167	2604	84	2264	73	2355	76	-13%	4%
FEBRUARY	789	918	1085	1195	2260	81	1874	67	2113	73	-17%	13%
MARCH	976	908	1175	1209	2552	82	2151	69	2117	68	-16%	-2%
APRIL	896	916	1203	1021	2366	79	2099	70	1937	65	-11%	-8%
MAY	960	790	1126	1101	2299	74	2086	67	1891	61	-9%	-9%
JUNE	918	852	1287	935	2414	80	2205	74	1787	62	-9%	-19%
JULY	1147	1139	1268	1159	2683	87	2415	78	2298	74	-10%	-5%
AUGUST	1000	1217	1368	1358	2563	83	2368	76	2575	83	-8%	9%
SEPTEMBER	1033	1104	1360	1254	2440	81	2393	80	2358	79	-2%	-1%
OCTOBER	904	1013	1365	1114	2667	86	2269	73	2127	69	-15%	-6%
NOVEMBER	880	969	1254	1319	2278	76	2134	71	2288	76	-6%	7%
DECEMBER	1127	1144	1296	1369	2456	79	2423	78	2513	81	-1%	4%
AVERAGE	968	1013	1256	1183	2465	81	2223	73	2197	72	-10%	-1%

Global figures of the EUR/SAM corridor



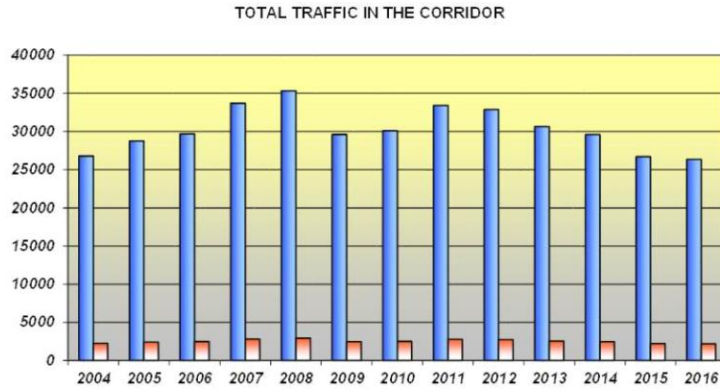
Number of movements



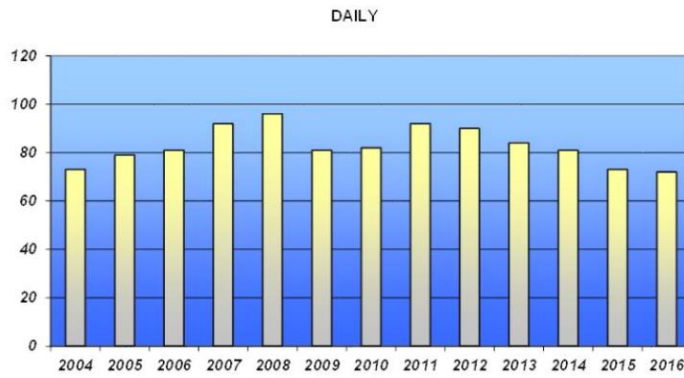
FIGURES OF	SOUTHBOUND	NORTHBOUND	TOTAL TRAFFIC IN THE CORRIDOR	MONTHLY	DAILY
2004	13108	13685	26793	2233	73
2005	14088	14674	28762	2397	79
2006	14651	15036	29687	2474	81
2007	16704	17004	33708	2809	92
2008	17024	18295	35319	2943	96
2009	14256	15366	29622	2468	81
2010	14083	16019	30102	2508	82
2011	15426	17988	33414	2784	92
2012	15245	17624	32869	2739	90
2013	14778	15867	30645	2554	84
2014	13469	16113	29582	2465	81
2015	11613	15068	26681	2223	73
2016	12158	14201	26359	2197	72

enaire.es

Number of movements



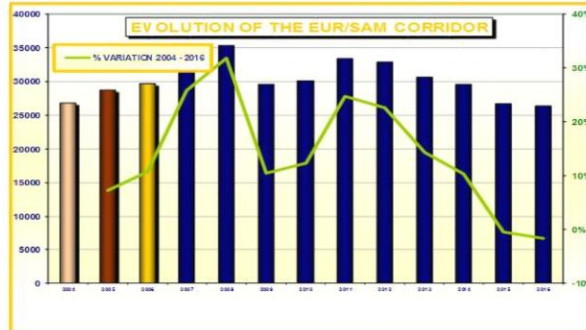
Average of daily traffic



Evolution of the EUR/SAM corridor



FIGURES OF	ROUT HOURS	NOCT HOURS	TOTAL TRAFFIC IN THE CORRIDOR	% INCREASE FROM 2004
2004	13108	13685	26793	-
2005	14898	14674	29572	7,3%
2006	14881	15036	29917	10,8%
2007	16704	17004	33708	25,8%
2008	17924	18295	35319	31,82%
2009	14286	15066	29352	10,96%
2010	14895	15019	30102	12,28%
2011	15426	17988	33414	24,71%
2012	15245	17624	32869	22,68%
2013	14778	15907	30645	14,38%
2014	15468	16112	29582	10,41%
2015	11613	15068	26681	-0,42%
2016	12159	14201	26359	-1,62%

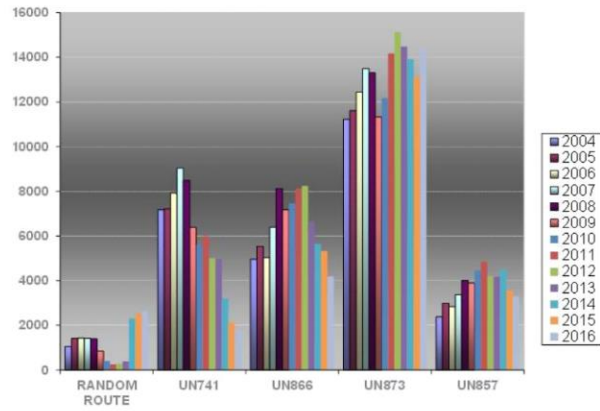


Traffic per ATS routes



	TOTAL	RANDOM ROUTE	UN741	UN866	UN873	UN857
2004	26793	1052	7179	4960	11219	2383
2005	28762	1413	7220	5534	11609	2986
2006	29687	1429	7935	5037	12442	2844
2007	33708	1424	9039	6389	13484	3372
2008	35319	1399	8486	8113	13314	4007
2009	29622	845	6383	7173	11320	3901
2010	30102	399	5605	7466	12170	4462
2011	33414	261	5999	8129	14172	4853
2012	32869	292	5009	8237	15129	4202
2013	30645	388	4968	6634	14477	4178
2014	29582	2310	3204	5650	13919	4499
2015	26681	2529	2121	5330	13134	3567
2016	26359	2643	1840	4201	14383	3292

Traffic per ATS routes



Daily Traffic

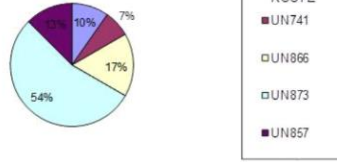


	TOTAL	RANDOM AREA		UN741		UN866		UN873		UN857	
	CORREDOR	DAILY	%	DAILY	%	DAILY	%	DAILY	%	DAILY	%
2004	73	3	4%	20	27%	14	19%	31	42%	7	10%
2005	79	4	5%	20	25%	15	19%	32	41%	8	10%
2006	81	4	5%	22	27%	14	17%	34	42%	8	10%
2007	92	4	4%	25	27%	18	20%	37	40%	9	10%
2008	97	4	4%	23	24%	22	23%	36	37%	11	11%
2009	81	2	2%	17	21%	20	25%	31	38%	11	14%
2010	82	1	1%	15	18%	20	24%	33	40%	12	15%
2011	92	1	1%	16	17%	22	24%	39	42%	13	14%
2012	91	1	1%	14	15%	23	25%	42	46%	12	13%
2013	84	1	1%	14	17%	18	21%	40	48%	11	13%
2014	81	6	7%	9	11%	15	19%	38	47%	12	15%
2015	73	7	10%	6	8%	15	21%	36	49%	10	14%
2016	72	7	10%	5	7%	12	17%	39	54%	9	13%

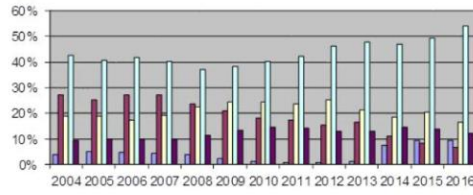
Daily Traffic



% OCCUPANCY 2016



% OCCUPANCY BY YEAR

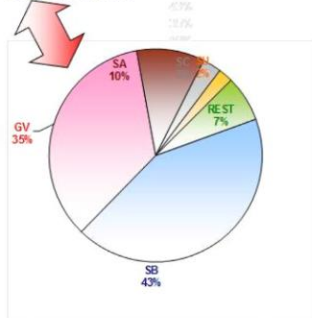


Main Flows



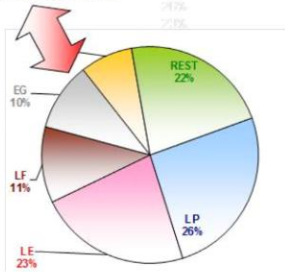
COUNTRY *	2015	2016	VAR %
SB	13234	11296	-14,6%
GV	8208	9185	11,9%
SA	2525	2716	7,6%
SC	846	746	-11,8%
SU	445	587	31,9%
REST	1423	1829	28,5%

* ORIGIN / DESTINATION



COUNTRY *	2015	2016	VAR %
LP	7139	6773	-5,1%
LE	6236	5905	-4,0%
LF	3132	2995	-4,4%
EG	2486	2691	8,2%
ED	2225	2066	-7,1%
REST	5463	5849	7,1%

* ORIGIN / DESTINATION



Main Airports



MAIN AIRPORT: LPPT	ATS ROUTE	SOUTHBOUND	NORTHBOUND	TOTAL	% PER ROUTE
% CORRIDOR: 24,17%	RANDOM	12	30	42	1%
	UN-741	279		279	4%
	UN-866		1070	1070	17%
	UN-873	2409	2183	4592	72%
	UN-857	235	153	388	6%
	TOTAL	2935	3436	6371	

MAIN AIRPORT: LEBD	ATS ROUTE	SOUTHBOUND	NORTHBOUND	TOTAL	% PER ROUTE
% CORRIDOR: 24,17%	RANDOM	511	471	982	18%
	UN-741	577		577	10%
	UN-866		1148	1148	21%
	UN-873	1016	1097	2113	38%
	UN-857	369	333	702	13%
	TOTAL	2473	3047	5520	

MAIN AIRPORT: SBGR	ATS ROUTE	SOUTHBOUND	NORTHBOUND	TOTAL	% PER ROUTE
% CORRIDOR: 20,94%	RANDOM	138	113	251	5%
	UN-741	439		439	8%
	UN-866		1320	1320	25%
	UN-873	1283	1475	2758	52%
	UN-857	348	186	534	10%
	TOTAL	2208	3074	5282	

Main Airports



MAIN AIRPORT: SBGL	ATS ROUTE	SOUTHBOUND	NORTHBOUND	TOTAL	% PER ROUTE
% CORRIDOR: 10,19%	RANDOM	89	60	149	6%
	UN-741	184		184	7%
	UN-866		646	646	25%
	UN-873	329	518	847	32%
	UN-857	485	321	806	31%
	TOTAL	1087	1545	2632	

MAIN AIRPORT: LFPG	ATS ROUTE	SOUTHBOUND	NORTHBOUND	TOTAL	% PER ROUTE
% CORRIDOR: 9,99%	RANDOM	112	79	191	8%
	UN-741	296		296	12%
	UN-866		514	514	21%
	UN-873	408	745	1153	48%
	UN-857	220	45	265	11%
	TOTAL	1036	1383	2419	

MAIN AIRPORT: OVBA	ATS ROUTE	SOUTHBOUND	NORTHBOUND	TOTAL	% PER ROUTE
% CORRIDOR: 9,18%	RANDOM				
	UN-741	38		38	2%
	UN-866	1	56	57	3%
	UN-873	1102	468	1570	75%
	UN-857	372	68	440	21%
	TOTAL	1513	592	2105	

Main Airports



MAIN AIRPORT: GVNP	ATS ROUTE	SOUTH BOUND	LOW FARE BOUND	TOTAL	% PER ROUTE
% CORRIDOR: 7,99%	RANDOM				
	UN741	50	0	50	3%
	UN866	0	5	5	0%
	UN873	687	715	1402	86%
	UN857	160	13	173	11%
	TOTAL	897	733	1630	

MAIN AIRPORT: TEKE	ATS ROUTE	SOUTH BOUND	LOW FARE BOUND	TOTAL	% PER ROUTE
% CORRIDOR: 6,18%	RANDOM	92	63	155	11%
	UN741	148	0	148	10%
	UN866	0	227	227	16%
	UN873	273	296	569	40%
	UN857	196	120	316	22%
	TOTAL	709	706	1415	

Main CityPairs



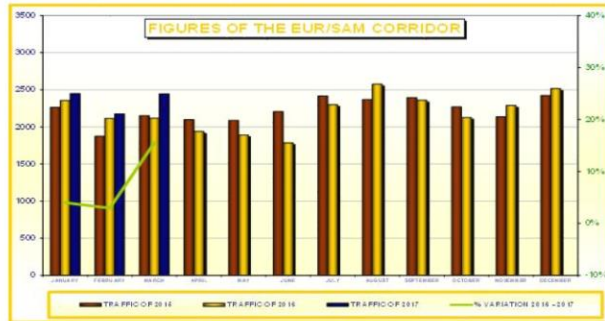
CITY PAIR	TOTAL	% TOTAL
SBGR <-> LEMD	1561	5,92%
SAEZ <-> LEMD	1475	5,60%
GVNP <-> LPPT	1249	4,74%
GVAC <-> LPPT	1002	3,80%
SBGR <-> LFPG	815	3,09%
SBGR <-> LPPT	733	2,78%
SBGL <-> LFPG	592	2,25%
SBGL <-> LPPT	588	2,23%
SUMU <-> LEMD	576	2,19%
SLVR <-> LEMD	520	1,97%
GVAC <-> EHAM	491	1,86%
SBGR <-> EDDF	482	1,83%
SBRF <-> LPPT	450	1,71%
SBGL <-> LEMD	431	1,64%
GVSV <-> LPPT	396	1,50%
SBSV <-> LPPT	378	1,43%
GVAC <-> GCLP	370	1,40%
SBGR <-> EGLL	360	1,37%
SBGL <-> EDDF	348	1,32%
GVAC <-> EGKK	346	1,31%
REST	13196	50,06%

Evolution of AO's



AIRCRAFT OPERATOR	2015	2016	VARIATION
TAP	5963	5463	-8,4%
IBE	3470	2682	-22,7%
AFR	2009	1917	-4,6%
AEA	1076	1684	56,5%
TOM	1030	1338	29,9%
DLH	983	924	-6,0%
TCV	1111	887	-20,2%
BAW	842	851	1,1%
TAM	1479	813	-45,0%
TUI	717	671	-6,4%
REST	8001	9129	14,1%

Traffic evolution in 2017



MONTH	SOUTHBOUND		NORTHBOUND		TOTAL TRAFFIC IN THE CORRIDOR				% VARIATION		% VARIATION	
	2016	2017	2016	2017	2015	DAILY	2016	DAILY	2017	DAILY	2015 - 2016	2016 - 2017
JANUARY	1188	1098	1167	1351	2354	73	2355	70	2448	79	-4%	4%
FEBRUARY	948	1012	1195	1163	1874	67	2113	73	2175	78	13%	3%
MARCH	908	1073	1208	1373	2151	69	2117	68	2446	79	-2%	16%
APRIL	915	1021	1021	2099	70	1937	65	1937	65	1937	-8%	100%
MAY	780	1101	1101	2086	67	1891	61	1891	61	1891	-9%	100%
JUNE	852	935	935	2205	74	1787	62	1787	62	1787	-15%	100%
JULY	1139	1199	1199	2415	78	2298	74	2298	74	2298	-5%	100%
AUGUST	1217	1358	1358	2368	76	2375	83	2375	83	2375	9%	100%
SEPTEMBER	1104	1254	1254	2383	80	2358	79	2358	79	2358	-1%	100%
OCTOBER	1013	1114	1114	2289	73	2127	69	2127	69	2127	-6%	100%
NOVEMBER	869	1319	1319	2134	71	2288	76	2288	76	2288	7%	100%
DECEMBER	1144	1388	1388	2423	78	2513	81	2513	81	2513	4%	100%
AVERAGE	1043	1064	1155	1395	2333	73	2407	79	2467	79	6%	7%