



International Civil Aviation Organization

# ICARD 5LNC Workshop

**Dakar, Senegal, 22-23 October 2014**

*Presented by Nicole Guillerot Goldschmid  
Former ICAO EUR/NAT ATM/A, ICARD data manager*



# ICARD access for route planners

<https://portal.icao.int>



**!! Route planners need prior registration**

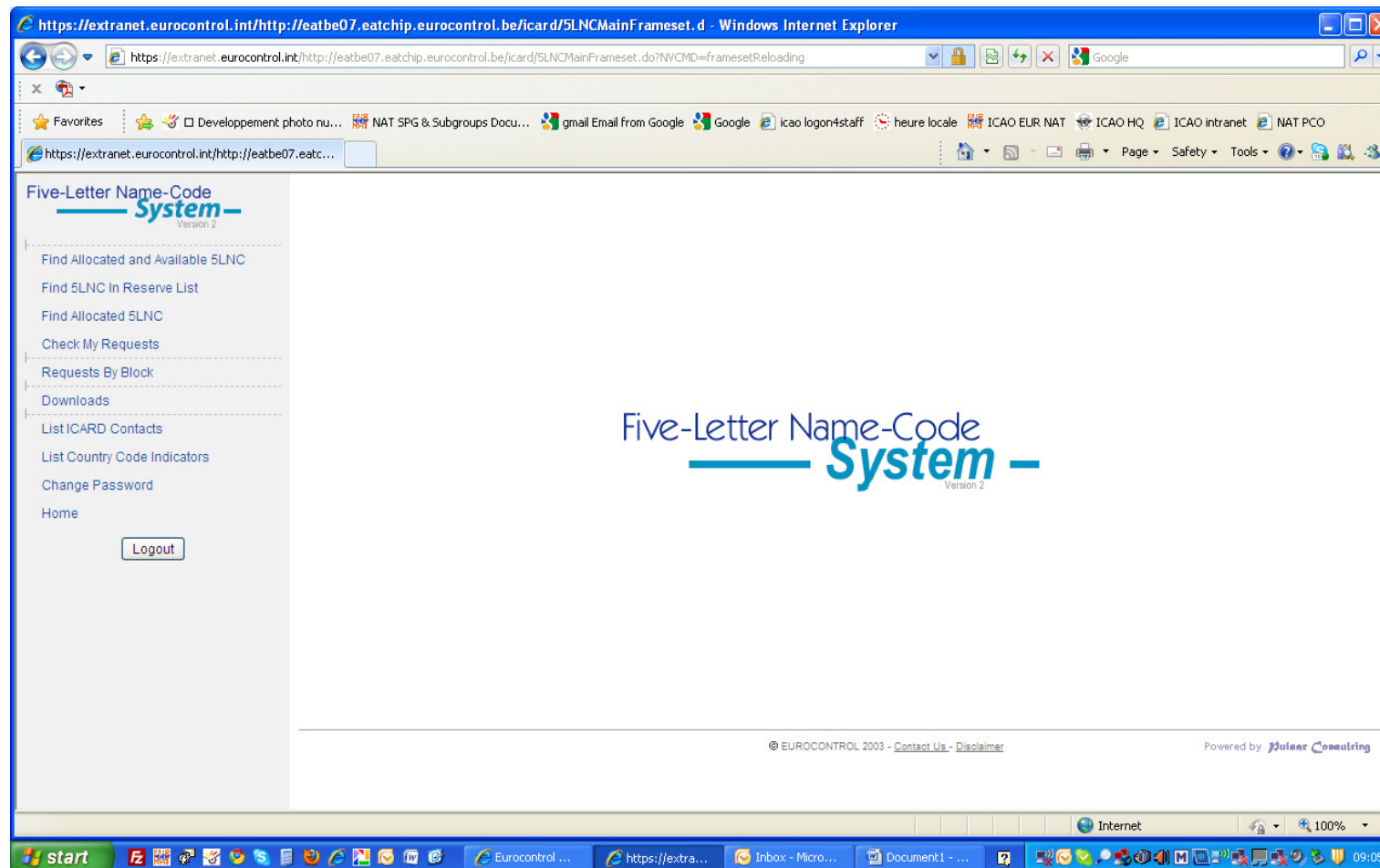
# Creating an ICARD account



A screenshot of a Windows Internet Explorer browser window displaying the ICAO Portal login page. The browser's address bar shows 'http://portal.icao.int/'. The page content includes the ICAO logo, the text 'Secure Site', and navigation links for 'Home' and 'Contact'. Below this, there are three links: 'Login', 'Request an account', and 'Cannot Login'. A red arrow points from the 'Request an account' link to a 'Message from webpage' dialog box. The dialog box contains the following text: 'NOTE: If you already have an account on the Secure Server for another group, you are not a New User. Login with your account and use the Group Membership link to request access to other groups. Proceed ONLY if this will be your FIRST account.' At the bottom of the dialog box are 'OK' and 'Cancel' buttons.



# ICARD 5LNC authorised user menu





# Search for existing code

**Five-Letter Name-Code System**  
Version 2

- Find Allocated and Available 5LNC
- Find 5LNC In Reserve List
- Find Allocated 5LNC
- Check My Requests
- Requests By Block
- Downloads
- List ICARD Contacts
- List Country Code Indicators
- Change Password
- Home

[ HELP ]

Reserve List   
  Allocated List   
  Both

**Search Criteria**

Code:

**Show Map centered on**

Latitude:

DDMM[SS.ss]H where H is 'N' or 'S'

Longitude:

DDDMM[SS.ss]H where H is 'E' or 'W'

**Search Results**

**Available codes**

Page 1 of 0

**Allocated codes**

Code	Type	Lat	Lon	Coord. States	Purpose	Decision Date	Action	Comment
MERLI	Non-ICAO	422844.68N	1231513.39W	USA		27/09/2000	D M	

Page 1 of 1

Code Deletion = D  
Show Map = M

© EUROCONTROL 2003 - [Contact Us](#) - [Disclaimer](#)      Powered by Muller Consulting



# Search sound-like codes

## Five-Letter Name-Code System Version 2

- Find Allocated and Available 5LNC
- Find 5LNC In Reserve List
- Find Allocated 5LNC
- Check My Requests
- Requests By Block
- Downloads
- List ICARD Contacts
- List Country Code Indicators
- Change Password
- Home

## Find 5LNC in Reserve List [HELP]

### Search Criteria

Search for:

Sound like:

Excluding the letter(s):  (e.g.: A, T, S)

Region:

### Random proximity search at

Radius of search(Nm.):

Latitude:

DDMM[SS.ss]H where H is 'N' or 'S'

Longitude:

DDDMM[SS.ss]H where H is 'E' or 'W'

Reserve list of:

### Search Results

<a href="#">EKRA</a>	<a href="#">IXIRU</a>								
<a href="#">EKRE</a>	<a href="#">IXORI</a>								
<a href="#">EKRE</a>	<a href="#">IXORO</a>								
<a href="#">EKRI</a>	<a href="#">IXORU</a>								
<a href="#">EKRO</a>	<a href="#">IXURA</a>								
<a href="#">EKRU</a>	<a href="#">IXURI</a>								
<a href="#">EKRU</a>	<a href="#">IXURO</a>								
<a href="#">IXIRA</a>	<a href="#">IXURU</a>								
<a href="#">IXIRI</a>	<a href="#">OKROD</a>								
<a href="#">IXIRO</a>	<a href="#">OKRUT</a>								

# 5LNCs status



## On-line status of codes:

- **blue codes** are available
  - **Underlined 5LNCs** = active and available for your region
    - the authorised user selects and proceeds with the request
  - **If not active** (not underlined) = available but belongs to another region
- **orange codes** action is being processed
- **red codes** are already allocated



# Random search with coordinates

## Find 5LNC in Reserve List [HELP]

### Search Criteria

Search for:

Sound like:

Excluding the letter(s):  (e.g.: A, T, S)

Region:

**Random proximity search at**

Radius of search(Nm.):

Latitude:   
DDMM[SS.ss]H where H is 'N' or 'S'

Longitude:   
DDDMM[SS.ss]H where H is 'E' or 'W'

Reserve list of:

### Search Results

<a href="#">IVBAB</a>	<a href="#">GATGA</a>	<a href="#">GITEP</a>						
<a href="#">LOLNO</a>	<a href="#">UBULI</a>	<a href="#">ITVOM</a>						
<a href="#">OTSOR</a>	<a href="#">EMGES</a>	<a href="#">XEBIT</a>						
<a href="#">KUDED</a>	<a href="#">ODPEK</a>	<a href="#">UMUBA</a>						
<a href="#">NUBYA</a>	<a href="#">KUVEX</a>	<a href="#">XITVI</a>						
<a href="#">ADBIB</a>	<a href="#">ABGIP</a>	<a href="#">NUPLU</a>						
<a href="#">ELMAD</a>	<a href="#">NAXEN</a>	<a href="#">EVIBO</a>						
<a href="#">IVLIB</a>	<a href="#">LELPI</a>	<a href="#">IBRIV</a>						
<a href="#">ADUTI</a>	<a href="#">ELGOK</a>	<a href="#">ERSAD</a>						
<a href="#">EKLOR</a>	<a href="#">IBRIG</a>	<a href="#">OSLEK</a>						

# Posting a request

ICARD - Request for Code Allocation - Mozilla Firefox

icaao.int https://icard.icao.int/ICARD\_5LNC/CiController.do?COM=ShowModifAddRequestPopupPage&Id=10161040

## Request for Code Allocation — PELIB [HELP]

SLNC

Latitude:  DDMM[SS.ss]H where H is 'N' or 'S' Proximity Search

Longitude:  DDDMM[SS.ss]H where H is 'E' or 'W'

Purpose:  Proximity check done

Comment:

Requested by: Nicole Guillerot France

For Countries :

FRA France

Done



# Sound-like proximity is mandatory

- **500 NM is the radius currently determined as safe for a sounding like proximity**
- **Checking sound like proximity is the responsibility of the route planner**
  - **The route planner will check the adequacy of the results obtained with the « list » function**
- **The data manager will refuse requests that are not safety checked and confirmed.**

# Sound like check proximity –list view

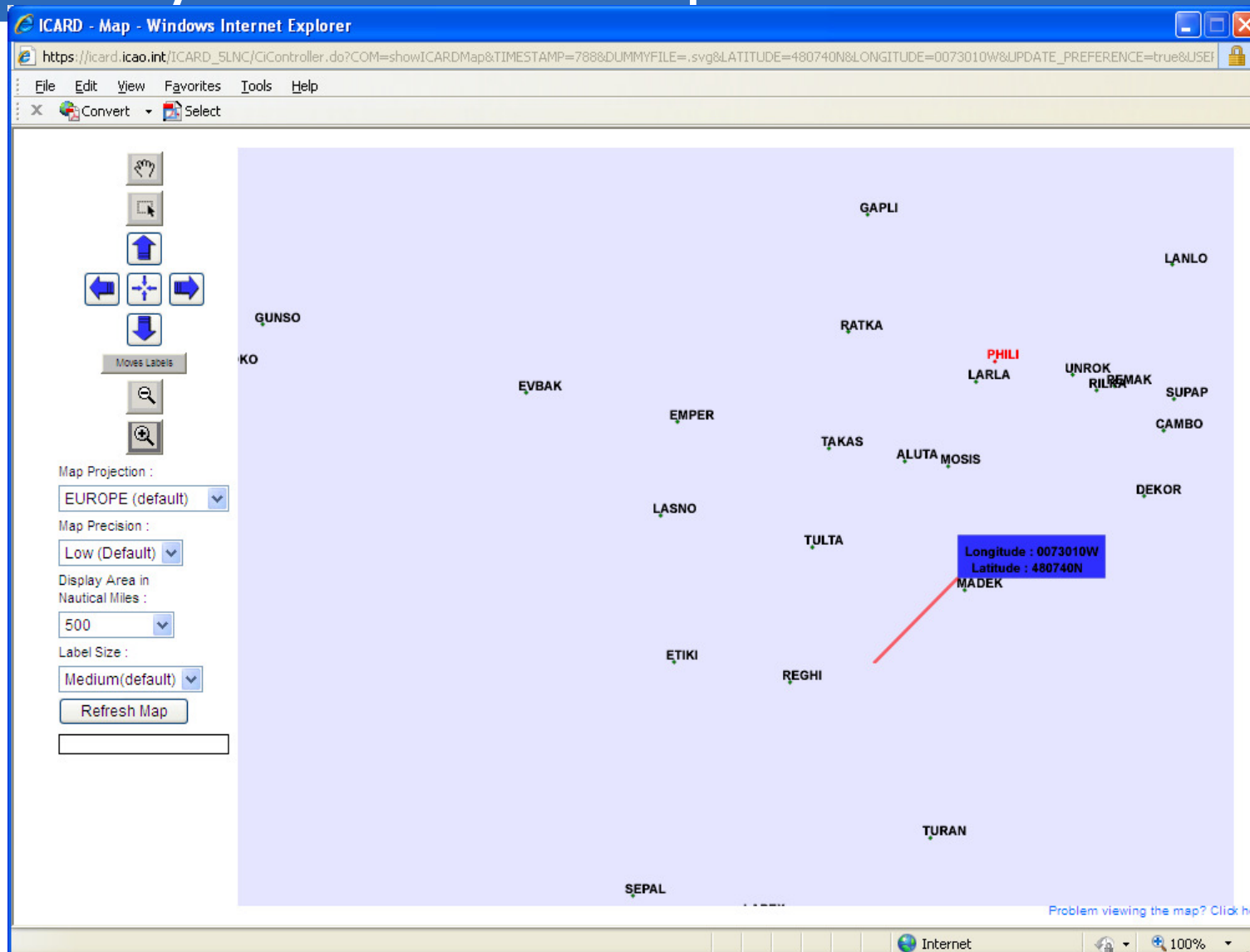
List Proximity Codes - Mozilla Firefox

icaao.int https://icard.icao.int/ICARD\_5LNC/ListProximityPopupPage.do?nameCode=PELIB&lat=480740n&lon=0073010w

Name Code	Distance in nautical miles
PHILI	86
PELIK	193
PELIG	304
RELVA	382
TELBA	413
DELBO	437
XELPI	491
PAULI	493
PALIO	542
BELPA	597
TEIVI	612
POLLY	617
BELOB	661
PELAT	681
BELVU	705
BELEP	712
POLOP	731
ERLIB	747
PELOM	748
PELET	764
BELFE	790
PELIX	809
BELAP	819
PELUX	833
GELPA	838
PILEV	844
BELUV	846
PELOK	847
PHALO	877
RELBI	892
PELOT	894

Done

# Proximity check with map function



ICARD - Map - Windows Internet Explorer

https://icard.icao.int/ICARD\_5LNC/CIController.do?COM=showICARDMap&TIMESTAMP=788&DUMMYFILE=.svg&LATITUDE=480740N&LONGITUDE=0073010W&UPDATE\_PREFERENCE=true&JSEI

File Edit View Favorites Tools Help

Convert Select

Map Projection : EUROPE (default)

Map Precision : Low (Default)

Display Area in Nautical Miles : 500

Label Size : Medium(default)

Refresh Map

Longitude : 0073010W  
Latitude : 480740N

Problem viewing the map? Click here

Internet 100%

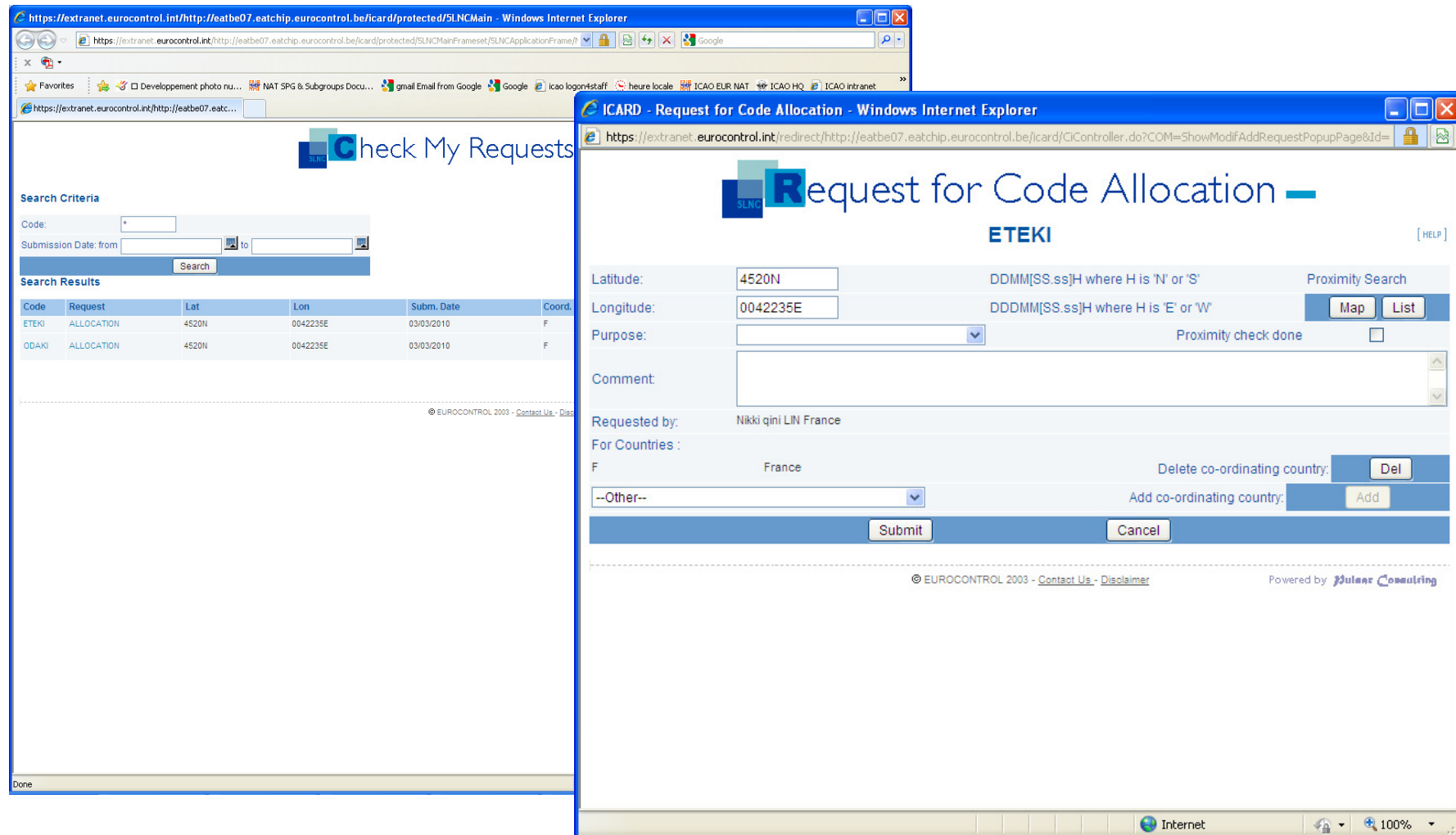
# Safety issues

Warnings are prompted to draw the authorised user's attention on the necessity to modify the request.

A screenshot of a web browser window showing the ETEKI interface. The browser address bar shows the URL: https://extranet.eurocontrol.int/http://eatbe07.eatchip.eurocontrol.be/icard/protected/PostRequ. The page title is 'ETEKI' and the main heading is 'Your request is successfully recorded in the database'. Below this, there is a table of request details: Latitude: 4520N, Longitude: 0042235E, Purpose: (empty), Comment: test ngoldschmid, Requested by: Nikki qini LIN France, Proximity check done: No, For Countries: F-France. At the bottom of the table are 'Print' and 'Close' buttons. Below the table, there is a red warning message: 'Attention, checking proximity is a requirement for data managers to accept your request!' followed by a 'Back' button. Below that is another red warning: 'Warning : This code is close to another existing point'. At the very bottom of the page, there is a footer with copyright information: '@ EUROCONTROL 2003 - Contact Us - Disclaimer' and 'Powered by Julian Consulting'. The browser's taskbar at the bottom shows 'Internet' and '100%' zoom.

# Check my requests

pending requests can be modified



The image shows two overlapping browser windows from the ICARD system. The background window displays the 'Check My Requests' search interface, and the foreground window shows the 'Request for Code Allocation' modification form for request ETEKI.

**Search Results Table:**

Code	Request	Lat	Lon	Subm. Date	Coord.
ETEKI	ALLOCATION	4520N	0042235E	03/03/2010	F
ODAKI	ALLOCATION	4520N	0042235E	03/03/2010	F

**Request for Code Allocation - ETEKI**

Latitude: 4520N DDMM[SS.ss]H where H is 'N' or 'S' Proximity Search

Longitude: 0042235E DDDMM[SS.ss]H where H is 'E' or 'W'

Purpose:  Proximity check done

Comment:

Requested by: Nikki qini LIN France

For Countries: F France Delete co-ordinating country:

--Other-- Add co-ordinating country:

© EUROCONTROL 2003 - [Contact Us](#) - [Disclaimer](#) Powered by [Hulsar Consulting](#)

# On-line downloads



ICARD - Downloads - Windows Internet Explorer

https://extranet.eurocontrol.int/http://eatbe07.eatchip.eurocontrol.be/icard/5LNCMainFrameset.do?NVCMID=framesetReloading

ICARD - Downloads

Five-Letter Name-Code System Version 2

Downloads

List All Per Country

Region: [Please Select a region] Countries: France

Launch Report

List All Per Code

Region: [Please Select a region] Countries: France

Launch Report

List Duplicates Per Country

Region: [Please Select a region] Countries: France

Launch Report

List Duplicates Per Code

Region: [All] Countries: [All]

Launch Report

© EUROCONTROL 2003 - Contact Us - Disclaimer

Powered by Mules Consulting