



CNS/AIRS VHF Frequency Assignment Planning Tool

Background

- Since early 90's, providing frequency assignment planning software requests was raised from Regional Offices to ICAO HQs
- MID 90's – programs were developed for use in the EUR Region. To date, these programs have now evolved into MANIF and SAFIRE
- Late 90's – A program was developed by China for use in the APAC Office

Background(continued)

- Early 2000 – ICAO developed a program for frequency planning for HF frequencies. This program is available for global use.
- 2004 – Eurocontrol offered ICAO to use SAFIRE for frequency coordination. These offers never materialized.
- 2008- ICAO started in house the development of a program for frequency assignment planning for COM and NAV systems.

Developing Strategy

- Integration- if the information contained in the frequency plans with the information in the ANP to provide for airspace planning tools.
- Neither of the programs available in the EUR and the APAC Office would provide for global frequency planning without significant modifications.

Strategy (Continued)

- Frequency planning needs to be based on more frequency efficient techniques. Currently, in most regions, planning is based on circular coverage to avoid unnecessary congestion. This will avoid (or delay) retrofit of aircraft with equipment with reduced channel spacing.
- The global database developed with the program will improve interregional coordination.

Design method /Software Framework

- The program is envisaged to be available from the ICAO web accessible to all ICAO contracting States. This mechanism will provide means for States to pre-calculate and pre-coordinate their frequency assignments.
- Together with the information on the ICAO web on airspace usage (such as air routes, operational areas) a tool for airspace planning
- The program will be based on a single global database.

(Continued)

- The principles for frequency planning as has been established in ICAO since the mid 1950's will not change. However, in order to accommodate for more efficient frequency planning, some changes may be necessary to the current planning criteria (table of geographic distances between facilities).

(Continued)

- The program will allow the user to plot on a map the operational coverage and the interference contours for frequency assignments.
- The program will also be available on CD-ROM for any off-line use.
- The global database can only be updated by the Regional Offices.

(Continued)

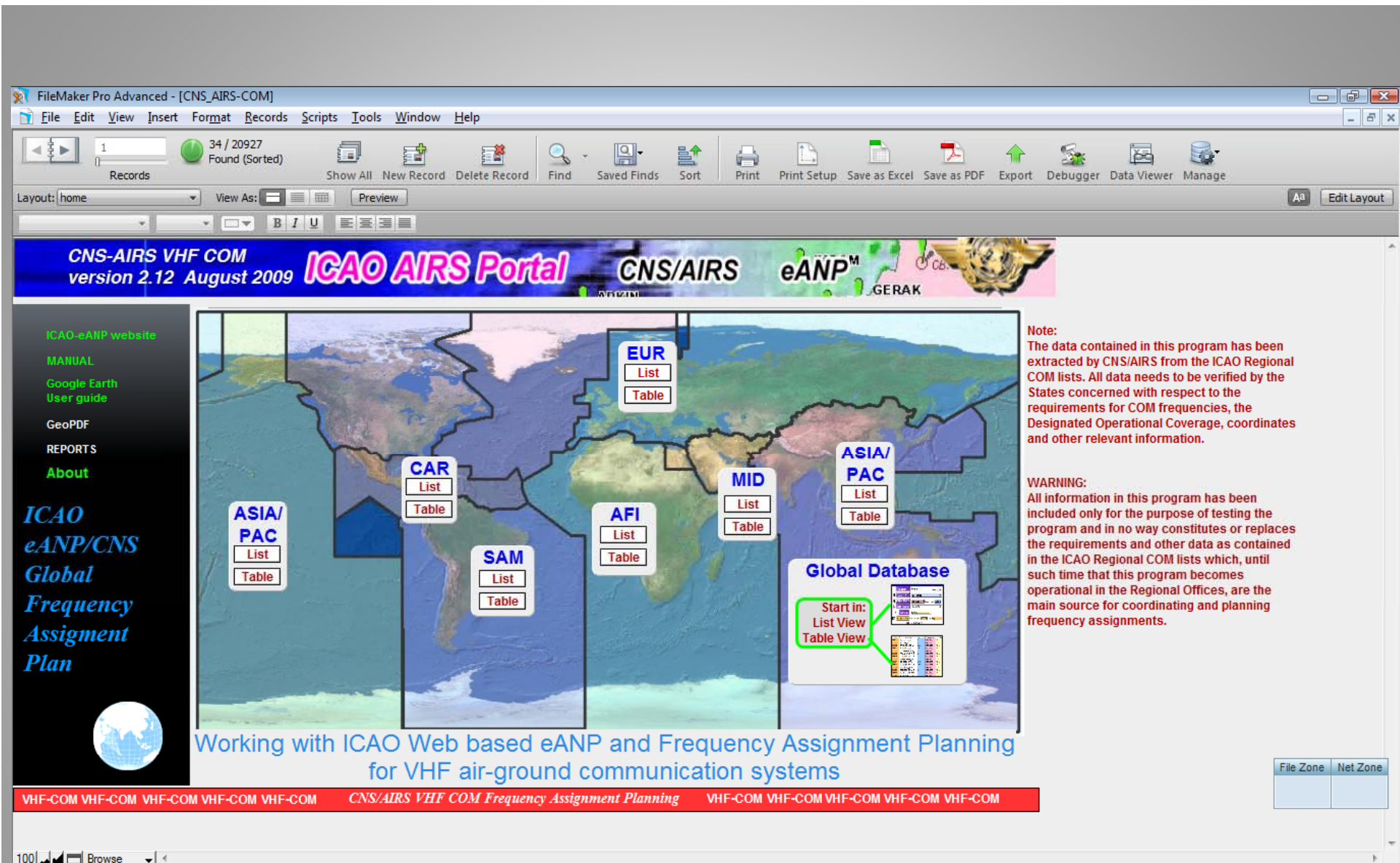
- Regional databases (COM lists) can be generated from this global list. Other lists (e.g. national frequency lists) can also be generated.
- The program will allow the user to plot the operational coverage and the interference contours for frequency assignments on a map.

(Continued)

- Under consideration is the development of specific software for calculating separation distances, in particular for new (or amended) frequency assignments. One country has offered to consider developing such software. This would greatly enhance efficient frequency planning.

(Continued)

- The program will also be available on CD-ROM for any off-line use
- Under consideration is the development of specific software for calculating separation distances, in particular for new (or amended) frequency assignments. One country has offered to consider developing such software. This would greatly enhance efficient frequency planning.



- It runs on any PC with MS Windows [and MAC] and uses FileMaker Pro Advanced as the main database.

FileMaker Pro Advanced - [CNS_AIRS-COM]

File Edit View Insert Format Records Scripts Tools Window Help

Records: 812 / 1581 / 20927 Found (Sorted)

Show All New Record Delete Record Find Saved Finds Sort Print Print Setup Save as Excel Save as PDF Export Debugger Data Viewer Manage

Layout: AFIAPACLISTfinal View As: Preview

Home New/Mod Frequency Search frequency Mapping Mapping (pre-calc) Color coding frequencies Not assignable frequency (Emergency, SSB)

records found: 1581

Base layers 2008 Fir world ICAO Fir sector world COM world Aero world Route AFI Route MID Route ASIA PAC Route CARSAM

COM LIST 3

REGION	AFI	2 Reg: 28809	LATITUDE	06D35"00"N	LONGITUDE	003D19"00" E	
COUNTRY	Nigeria		CONDITION	OP	CATEGORY	NAT	Dec.lat 6.58333333 Dec.long 3.31666667
FREQUENCY	131.900	Country code: NIG	REMARKS	KLM	Entry/Mod		
NAME location	LAGOS_MURTALA_MUHAM		SERVICE	AOC	STATUS	BY	
REGION	AFI	2 Reg: 28810	LATITUDE	00D43"00"S	LONGITUDE	010D14"00" E	
COUNTRY	Gabon		CONDITION	OP	CATEGORY	NAT	Dec.lat -7.16666667 Dec.long 10.23333333
FREQUENCY	118.600	Country code: GAB	REMARKS		Entry/Mod		
NAME location	LAMBARENE		SERVICE	AFIS	STATUS	BY	
REGION	AFI	2 Reg: 28811	LATITUDE	00D43"00"S	LONGITUDE	010D14"00" E	
COUNTRY	Gabon		CONDITION	P	CATEGORY	ICAO	Dec.lat -7.16666667 Dec.long 10.23333333
FREQUENCY	125.200	Country code: GAB	REMARKS		Entry/Mod		
NAME location	LAMBARENE		SERVICE		STATUS	BY	

VHF-COM VHF-COM VHF-COM VHF-COM VHF-COM CNS/AIRS VHF COM Frequency Assignment Planning VHF-COM VHF-COM VHF-COM

100 Browse

- Offers the user to query the data base by Region, Country, frequency, location and service etc.
- Results of the query can be exported to either Microsoft Excel or to a PDF file.



FileMaker Pro Advanced - [CNS_AIRS-COM]

File Edit View Insert Format Records Scripts Tools Window Help

Records: 812 / 1581 / 20927 Found (Sorted)

Layout: AFIAPACLISTfinal View As: Preview

Home New/Mod Frequency Search frequency Mapping Mapping (pre-calc) VIEW AS COM LIST

records found: 1581

Base layers 2008 Fir world ICAO Fir sector world COM world Aero world Route AFI Route MID Route ASIA PAC Route CARSAM Route EUR

Press Esc to cancel running scripts

Color coding frequencies

- Not assignable frequency (Emergency, SAR)
- Aerodrome Surface communications
- Aeronautical Operational Control
- Air/ground communications

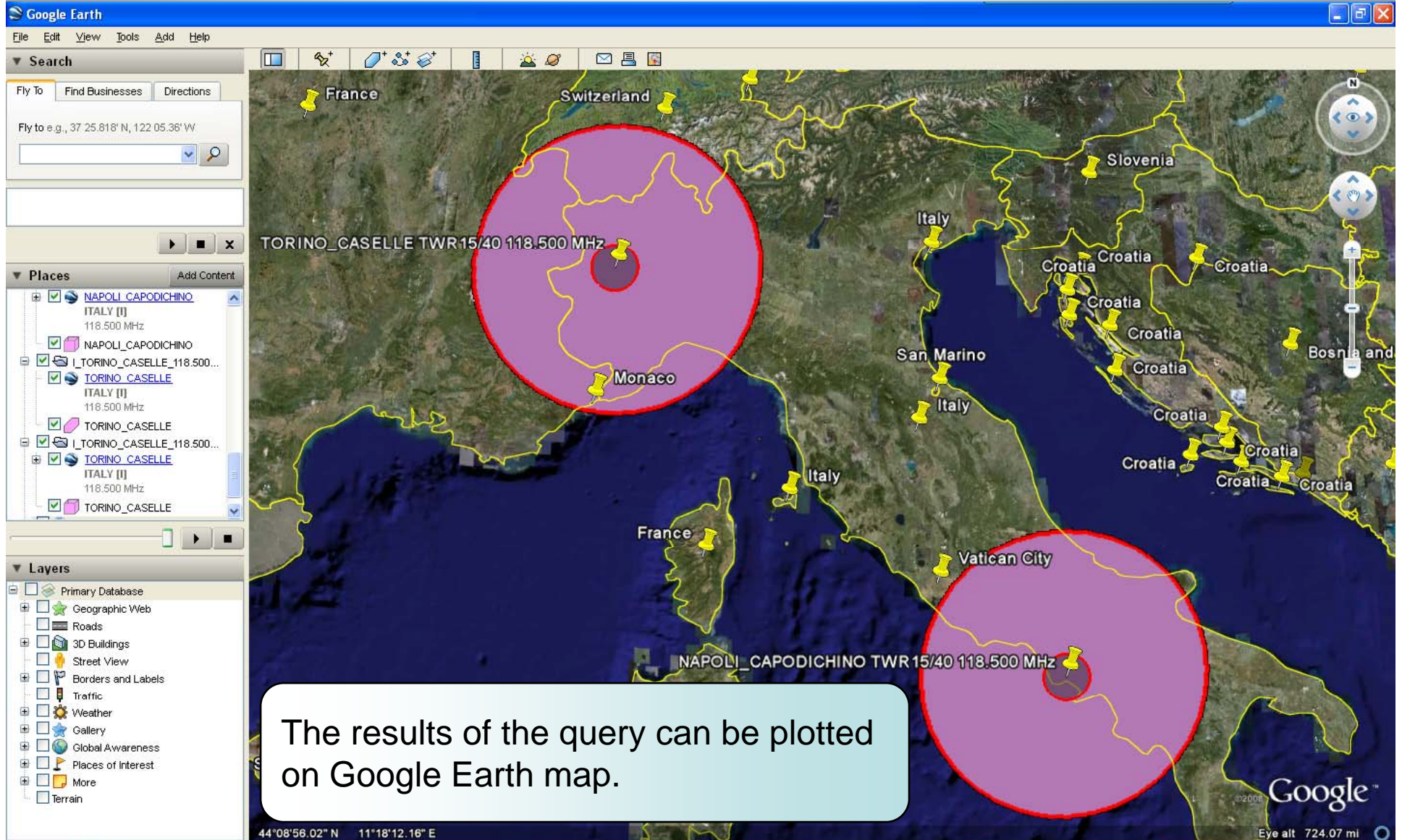
COM LIST 3

REGION	AFI	2 Reg: 28809	LATITUDE	06D35"00"N	LONGITUDE	003D19"00" E	FIR	
COUNTRY	Nigeria		CONDITION	OP	CATEGORY	NAT	CNS	
FREQUENCY	131.900	Country code: NIG	REMARKS	KLM	Entry/Mod		Range	1 NM
NAME location	LAGOS_MURTALA_MUHAM		SERVICE	AOC	STATUS	BY	Height	1 ft
							Radio Hor.	1 NM
REGION	AFI	2 Reg: 28810	LATITUDE	00D43"00"S	LONGITUDE	010D14"00" E	FIR	
COUNTRY	Gabon		CONDITION	OP	CATEGORY	NAT	CNS	
FREQUENCY	118.600	Country code: GAB	REMARKS		Entry/Mod		Range	25 NM
NAME location	LAMBARENE		SERVICE	AFIS	STATUS	BY	Height	25000 ft
							Radio Hor.	194 NM
REGION	AFI	2 Reg: 28811	LATITUDE	00D43"00"S	LONGITUDE	010D14"00" E	FIR	
COUNTRY	Gabon		CONDITION	P	CATEGORY	ICAO	CNS	
FREQUENCY	125.200	Country code: GAB	REMARKS		Entry/Mod		Range	NM
NAME location	LAMBARENE		SERVICE		STATUS	BY	Height	ft
							Radio Hor.	NM

VHF-COM VHF-COM VHF-COM VHF-COM VHF-COM CNS/AIRS VHF COM Frequency Assignment Planning VHF-COM VHF-COM VHF-COM VHF-COM VHF-COM

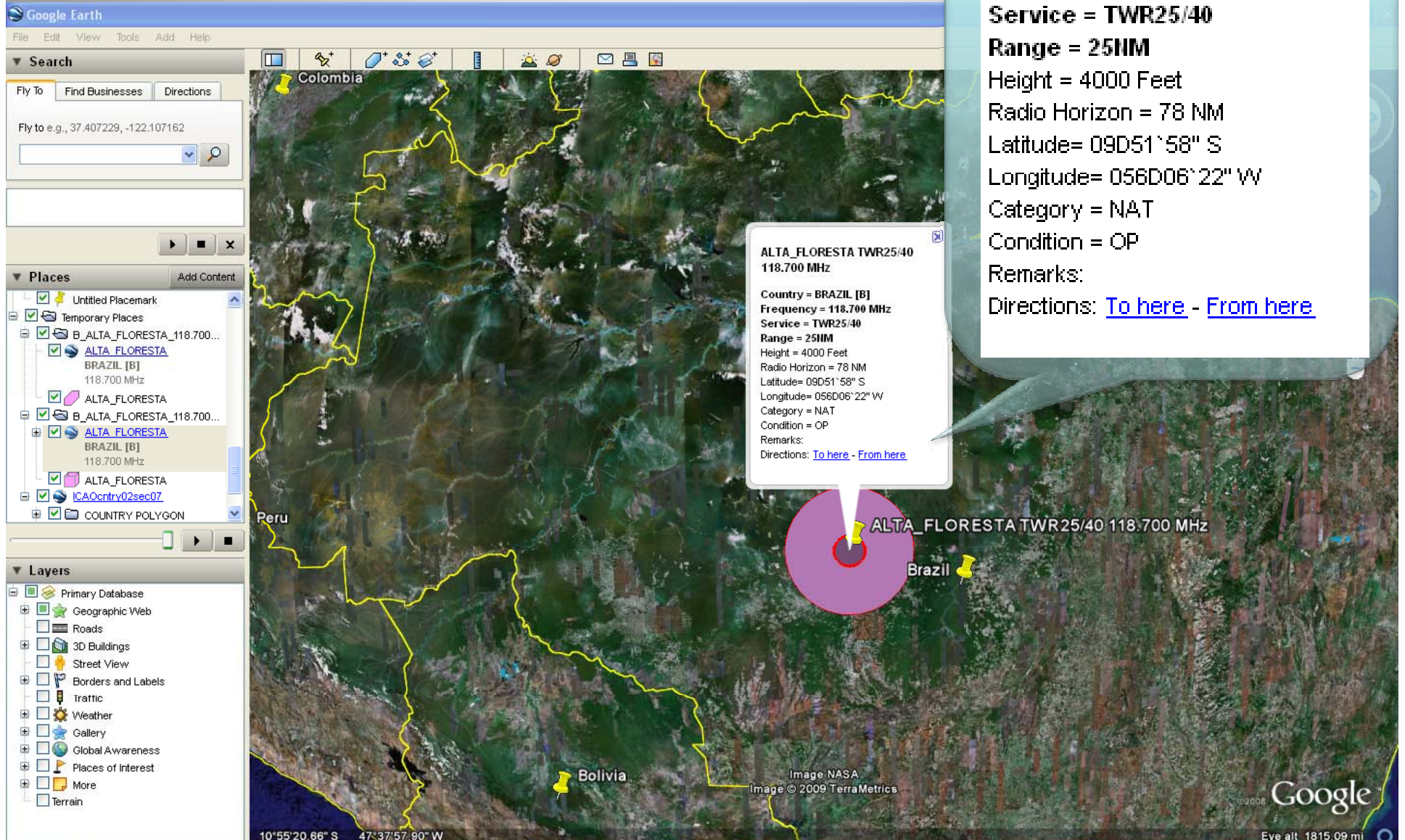
File Zone Net Zone

Co-channel Frequency Planning



The results of the query can be plotted on Google Earth map.

KML files information



**ALTA_FLORESTA TWR25/40
118.700 MHz**

Country = BRAZIL [B]
Frequency = 118.700 MHz
Service = TWR25/40
Range = 25NM
Height = 4000 Feet
Radio Horizon = 78 NM
Latitude= 09D51`58" S
Longitude= 056D06`22" W
Category = NAT
Condition = OP
Remarks:
Directions: [To here](#) - [From here](#)

ALTA_FLORESTA TWR25/40
118.700 MHz

Country = BRAZIL [B]
Frequency = 118.700 MHz
Service = TWR25/40
Range = 25NM
Height = 4000 Feet
Radio Horizon = 78 NM
Latitude= 09D51`58" S
Longitude= 056D06`22" W
Category = NAT
Condition = OP
Remarks:
Directions: [To here](#) - [From here](#)

ALTA_FLORESTA TWR25/40 118.700 MHz

Peru
Bolivia
Brazil

Image NASA
Image © 2009 TerraMetrics

Google

10°55'20.66" S 47°37'57.90" W

Eye alt 1815.09 mi

KML files information

- Program for SSR Mode S II code assignment and planning is available
- Program for HF planning and coordination is available
- Programs for ILS/VOR/DME and for NDB are in preparation
- Expected completion of all programs is in 2010

Thanks for your attention!

