



UPDATED REPORT IDAC ATFM-CDM
CADENA RIG MEETING FEBRUARY 2023 MIAMI

CANSO





PRESENT SITUATION

- DOMINICAN REPUBLIC HAS SHOWN VISIBLE SIGN OF RECOVERY FROM THE COVID PANDEMIC DURING 2021 UP TO NOW AS FOLLOWS.
- THE CIVIL AVIATION AUTHORITY AND THE DEPARTMENT OF TOURISM MINISTER ARE EXPECTING AN INCREASE OF PASSENGER OF ABOUT A MINIMUM OF 15% PER CENT PER YEAR.
- NEW AIRLINES BASED IN DOMINICAN REPUBLIC HAVE BEEN CREATED AND THEY HAVE PLANS TO ADD MORE AIRPLANES IN THE NEAR FUTURE, LIKE SKY CANA AND ARAJET.
- OPEN SKY AGREEMENT HAVE BEEN SIGNED WITH MANY COUNTRIES AND THE LAST ONE WITH CANADA AND NEXT WITH THE UNITED STATES TO BRING MORE AIRLINES.



PRESENT SITUATION

- THE GOVERNMENT IS FOCUSED IN CREATING A NEW TOURISTICAL AREA CALLED BAHIA DE LAS AGUILAS IN PEDERNALES, OPPOSITE TO PUNTA CANA .
- THE GOVERNMENT IS PLANNING THE CONSTRUCTION OF A NEW INTERNATIONAL AIRPORT IN PEDERNALES BAHIA DE LAS AGUILAS THAT WILL INCREASE THE TRAFFIC FLOW IN SANTO DOMINGO FIR.

Location new airport in pedernales



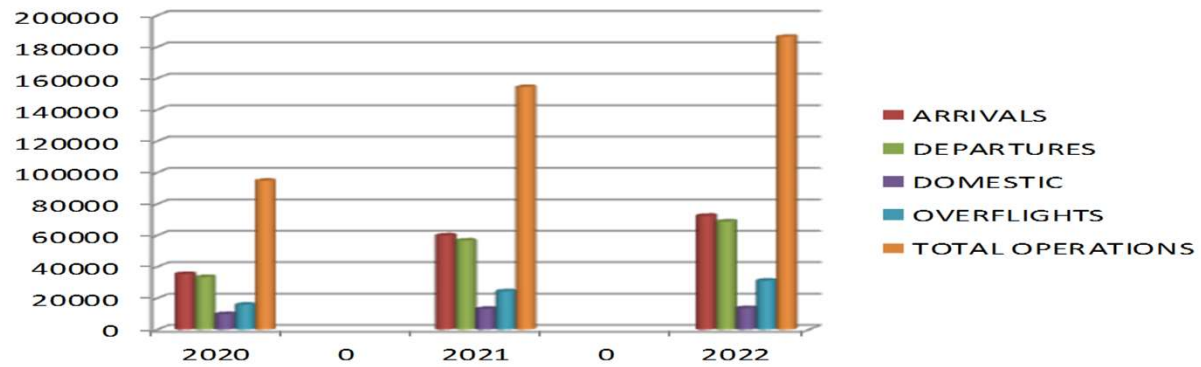


CANSO



TOTAL OPERATIONS 2020 2021 2022

YEAR	ARRIVALS	DEPARTURES	DOMESTIC	OVERFLIGHTS	TOTAL OPERATIONS
2020	35439	33491	9941	15984	94855
2021	60036	56790	13279	24460	154565
2022	72538	68902	13784	31236	186460

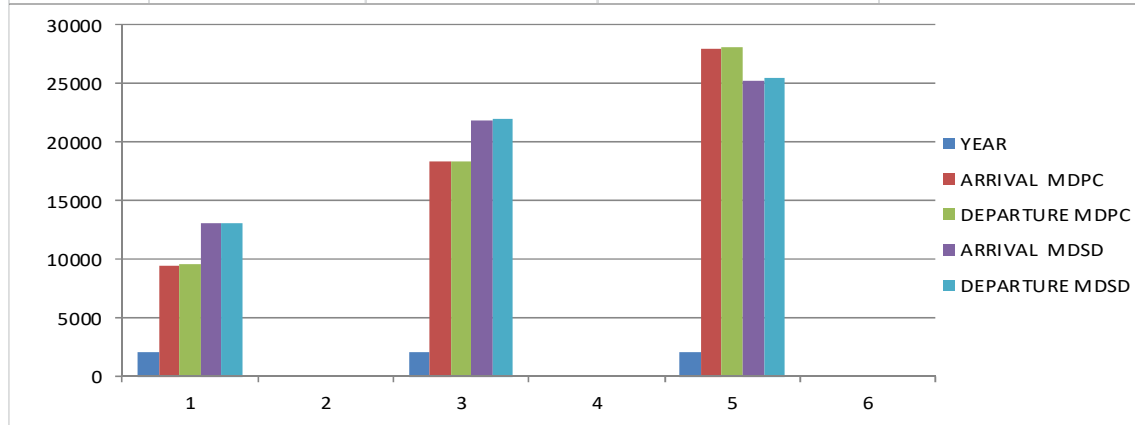




CANSO



YEAR	ARRIVAL MDPC	DEPARTURE MDPC	ARRIVAL MDSD	DEPARTURE MDSD
2020	9502	9540	13070	13044
2021	18346	18400	21836	22009
2022	27931	28106	25245	25472

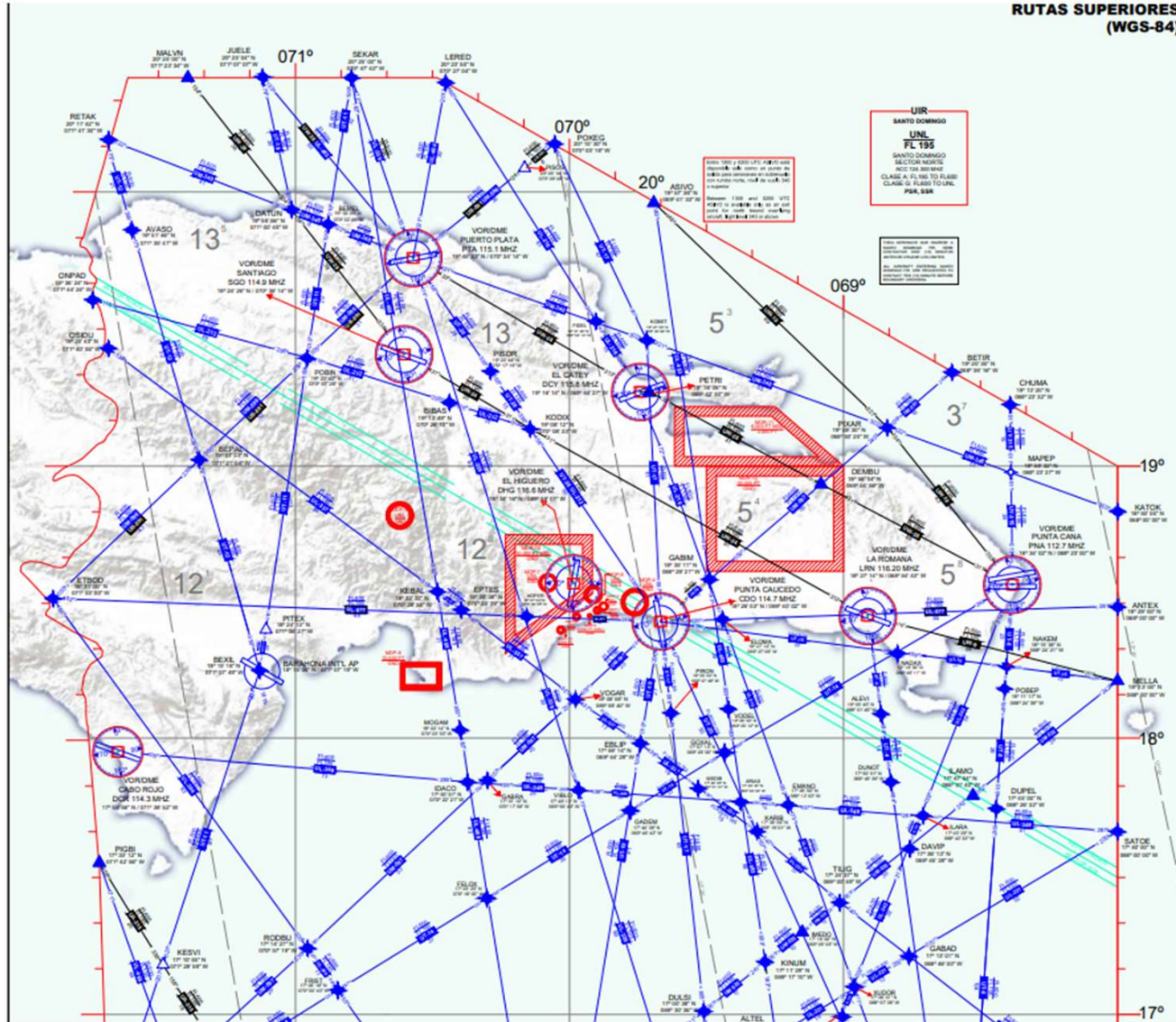




CHALLENGES

- 1. IN ORDER TO HANDLE SAFELY AN INCREASED AMOUNT OF FLIGHTS IN THE SAME SIZE AIRSPACE AS DESCRIBED BEFORE .
- 2. TMI MIT 20 OR 25 DOES NOT LOOK THE BEST ONE.
- 3. IMPOSSING SLOTS MAYBE POSSIBLE BUT NOT PRACTICAL FOR THE STOCKHOLDERS AND PASSENGERS.
- 4. ATC STAFF NEED TO BE TRAINED PROPERLY FOR ADJUSTMENT TO THE NEW FEATURE WITH NEW TECHNOLOGY.

RUTAS SUPERIORES (WGS-84)





RECOMMENDATIONS

- 1. START WORKING WITH ATM/PBN FOR AN AIRSPACE REDESIGN PROJECT.
- 2. THE POSSIBLE REDESIGNED AIRSPACE SHOULD INCLUDE TO DIVIDE VERTICALLY, FOR EXAMPLE FROM FLIGHT LEVEL 300 AND UP TO CREATE ANOTHER SECTOR.
- 3. CREATING ONE OR TWO MORE SECTORS VERTICALLY WILL TAKE PRESSURE OFF TO THE NORTHERN SECTOR.
- 4. A TRIAL PROGRAM CAN BE COORDINATED WITH NEIGHBORING FACILITIES AT ANY TIME.



THANKS VERY MUCH



•

• GOD BLESS YOU ALL