



Jamaica Air Traffic System Overview

Presented by: Deano Ledford
Director, Air Traffic Management (Acting)



HAVANA

MWCB

MWCR

CAYMAN TMA

MKJS

MKBS

MKJP

JAMAICA TMA

PORT-AU-PRINCE

CURACAO

CENAMER

WEST

EAST

125000 NM²

PANAMA

BARANQUILLA



ADJACENT FIR AUTOMATION



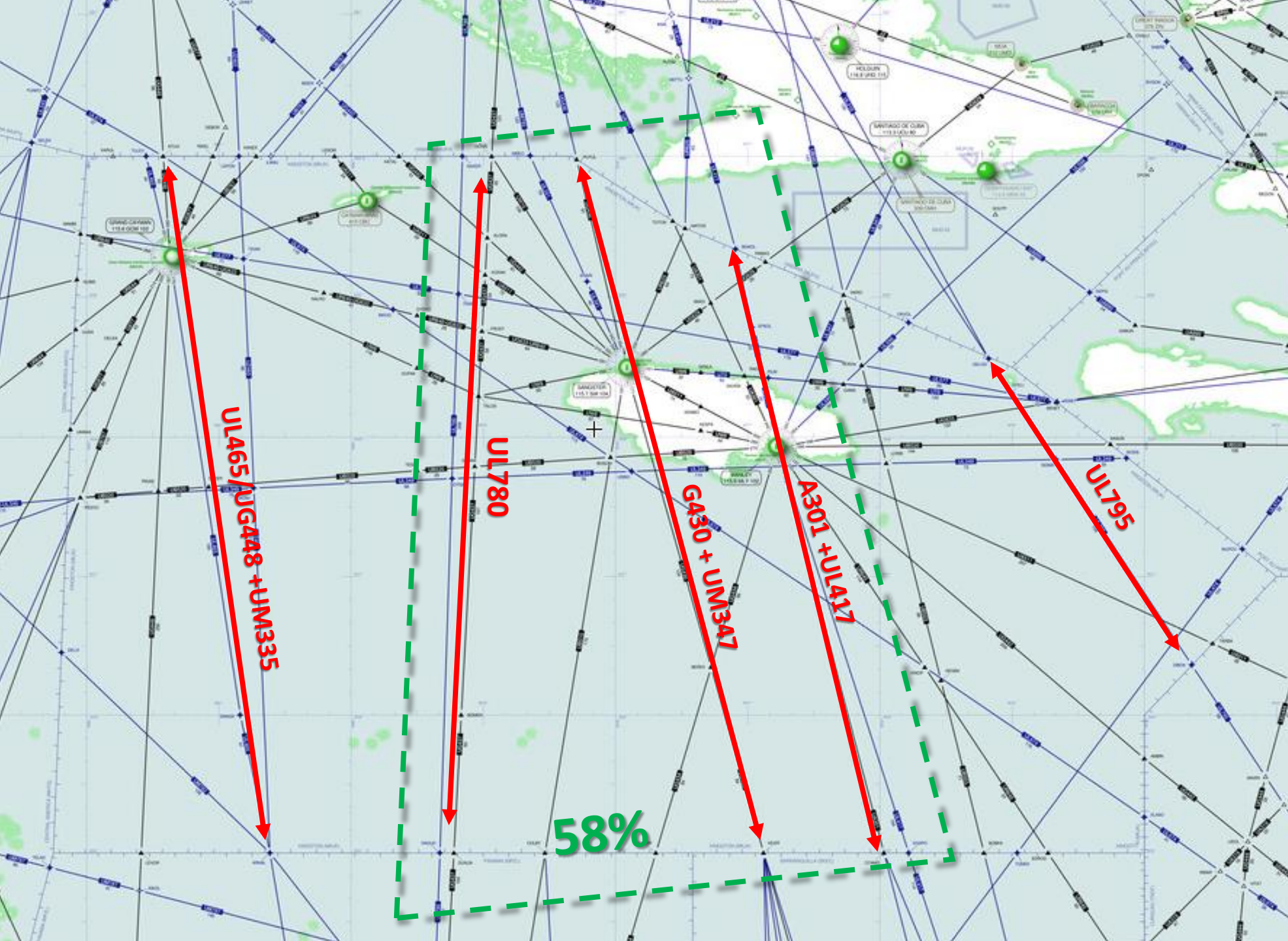
- Cuba /NAM
- COCESNA / NAM
- Panama/APAC
- Barranquilla/ APAC
- Curacao / APAC
- Haiti / not available
- Cayman / not available



TRAFFIC

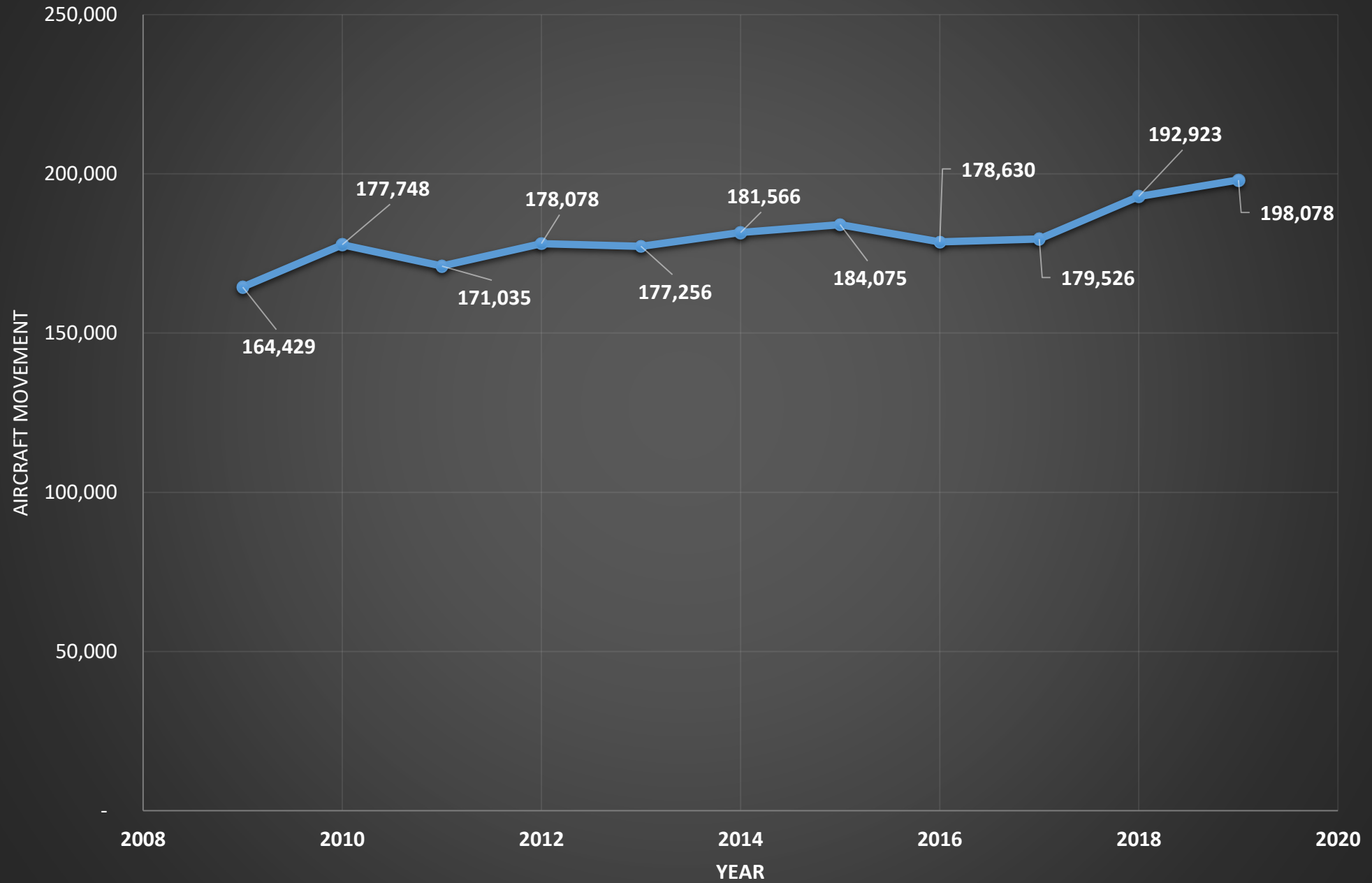


- Primarily north/south overflights and averages approximately 10,000 overflights per month
- Approximately 90% of the Arrivals and Departures from the three (3) international airports are from and to North America and average approximately 6000 monthly



Route	Percentage
UL465/UG448 + UM335	22
G430 + UM347	20
UL780	23
UA301/UL417	15
R640	2
UL795	5
UL674	2
UM542+R625	2
UL417	1
G442	3
A511	1
B767	1
UP536	1
R644	0.15
G877	0.30

Total Aircraft Movement for Kingston FIR 2009 - 2019

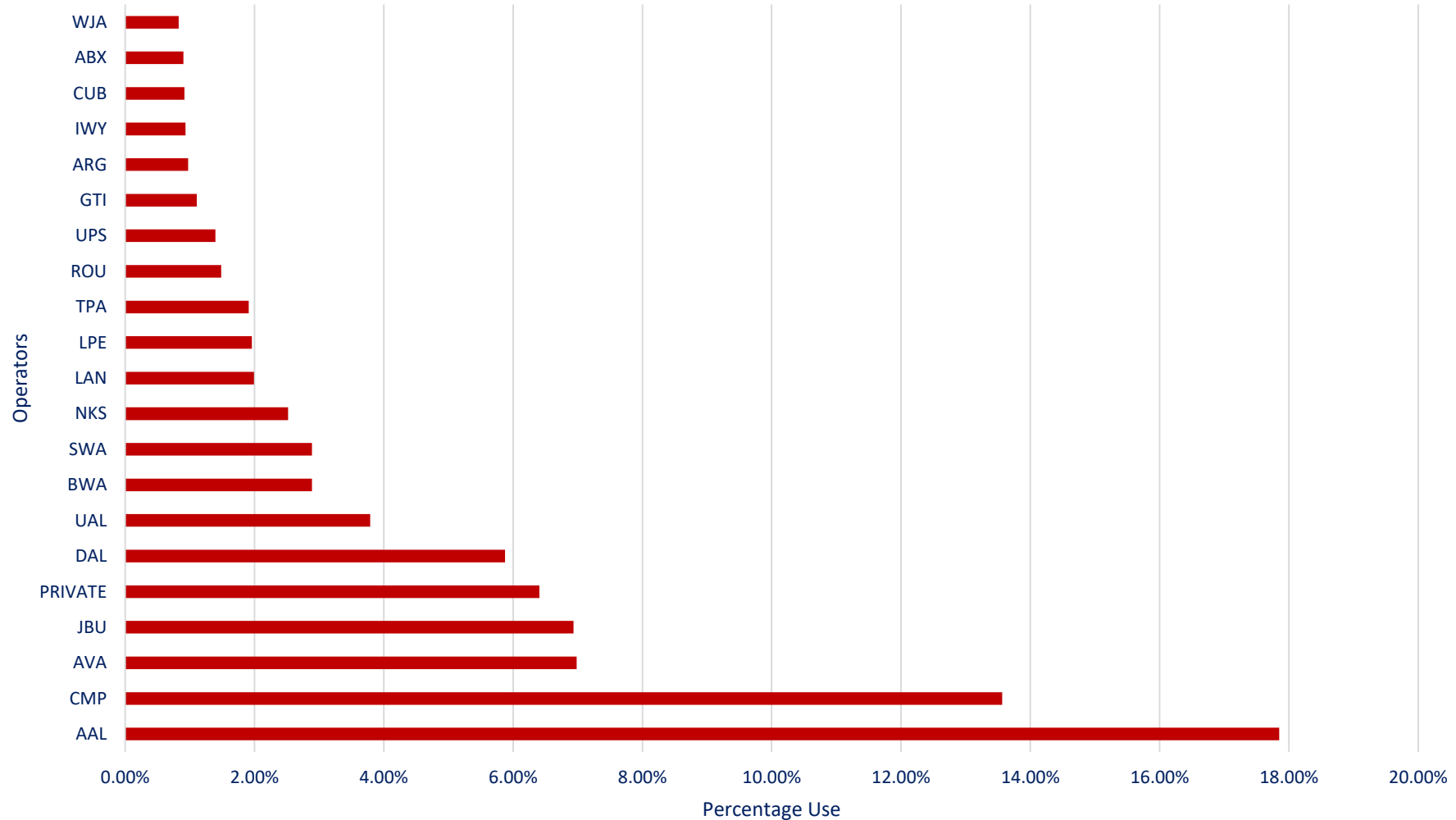


Overflights Aircraft Movement for Kingston FIR 2009 - 2019

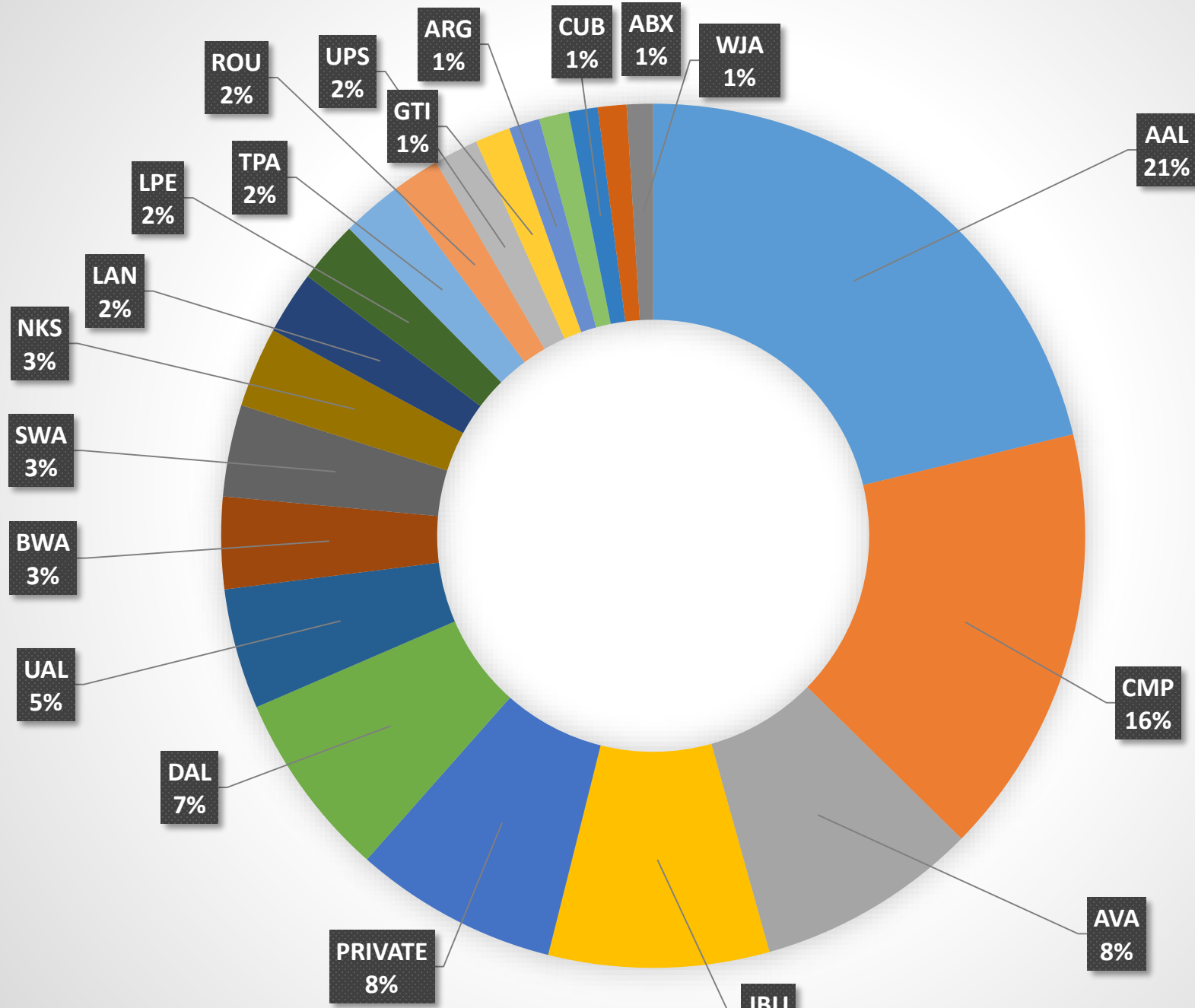




Kingston FIR Airspace Users

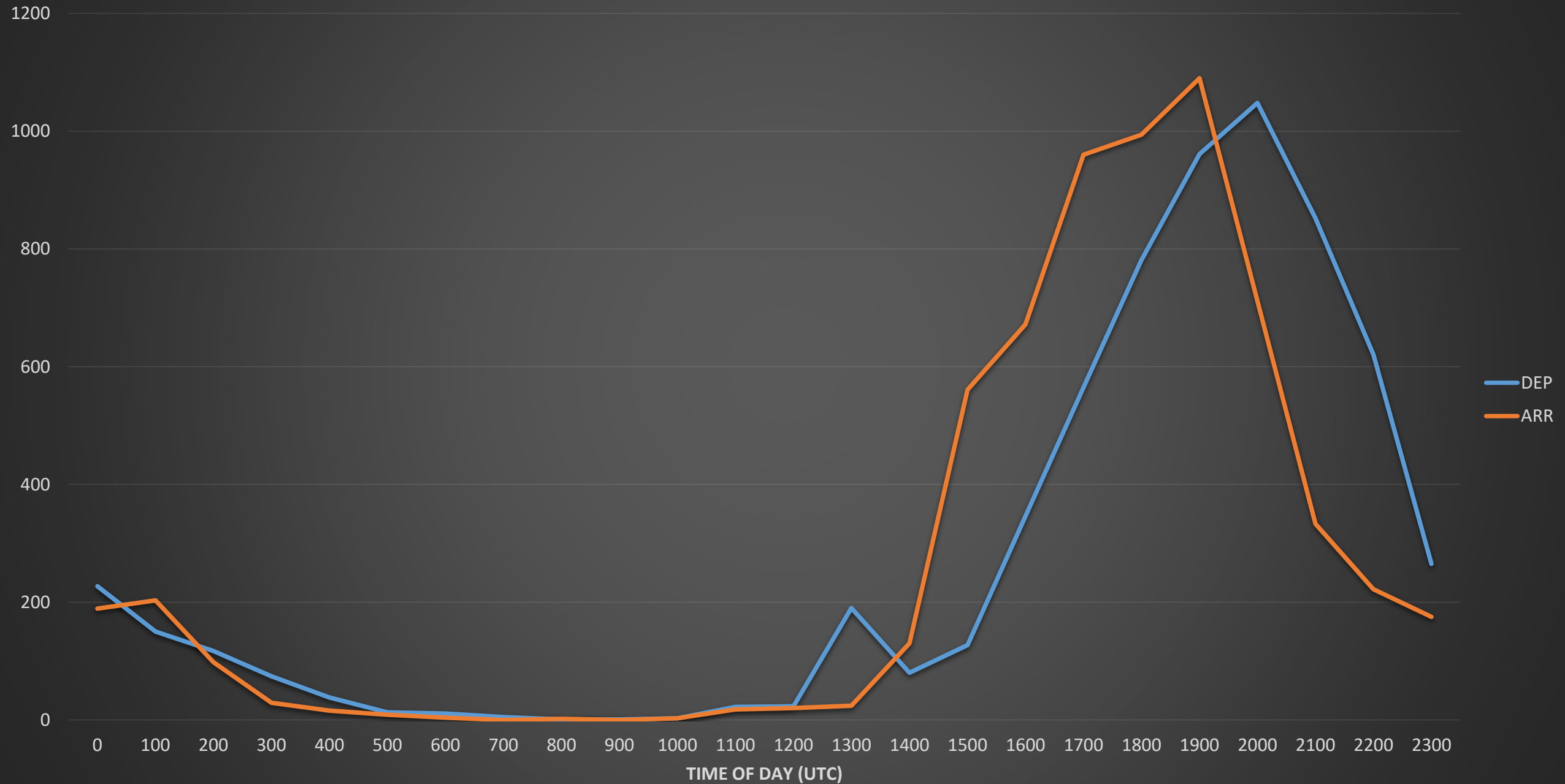


Kingston FIR Airspace Users by percentage



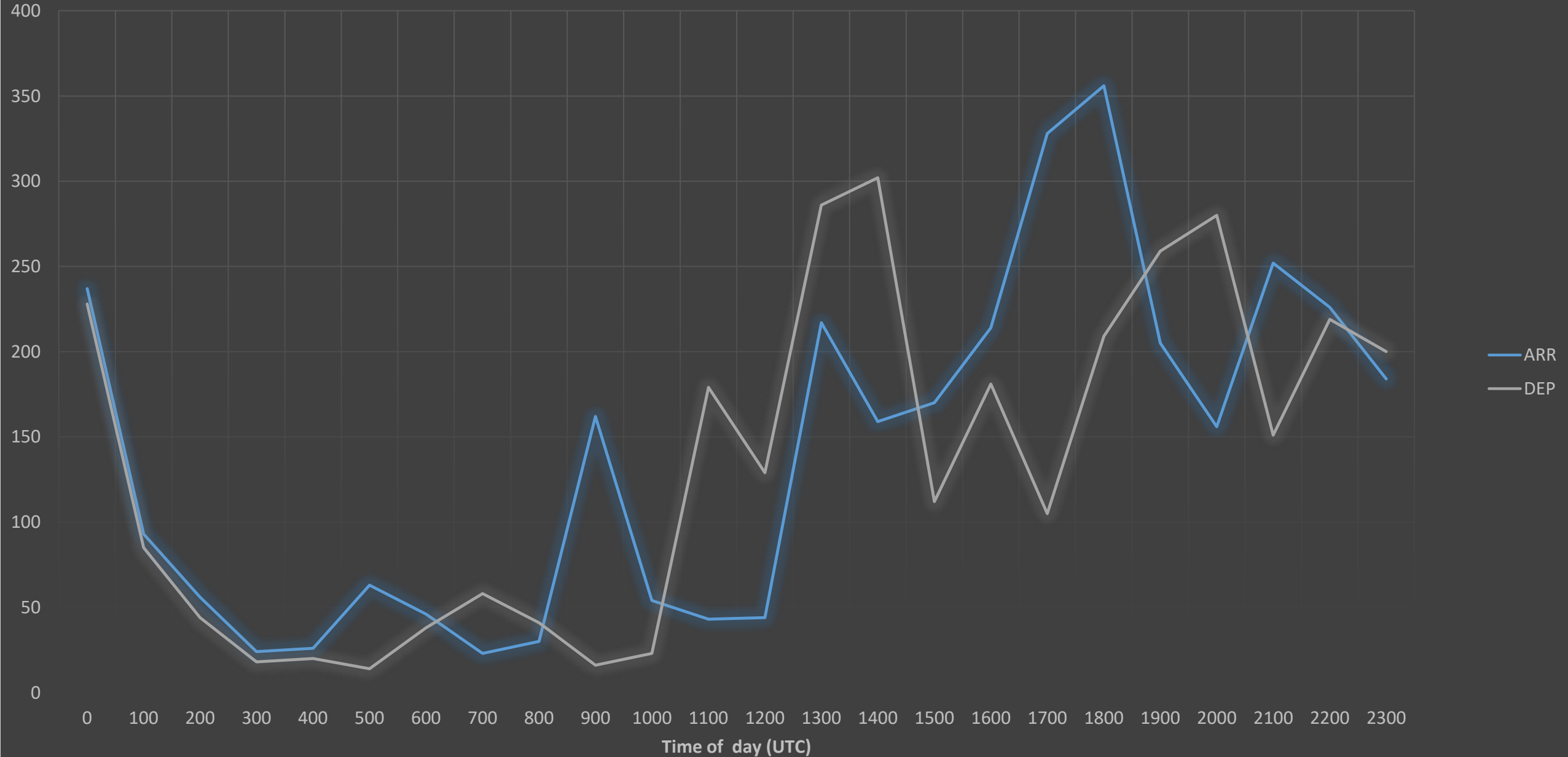
Aircraft Count into MKJS throughout 24 Hours

Oct 2018 – February 2019



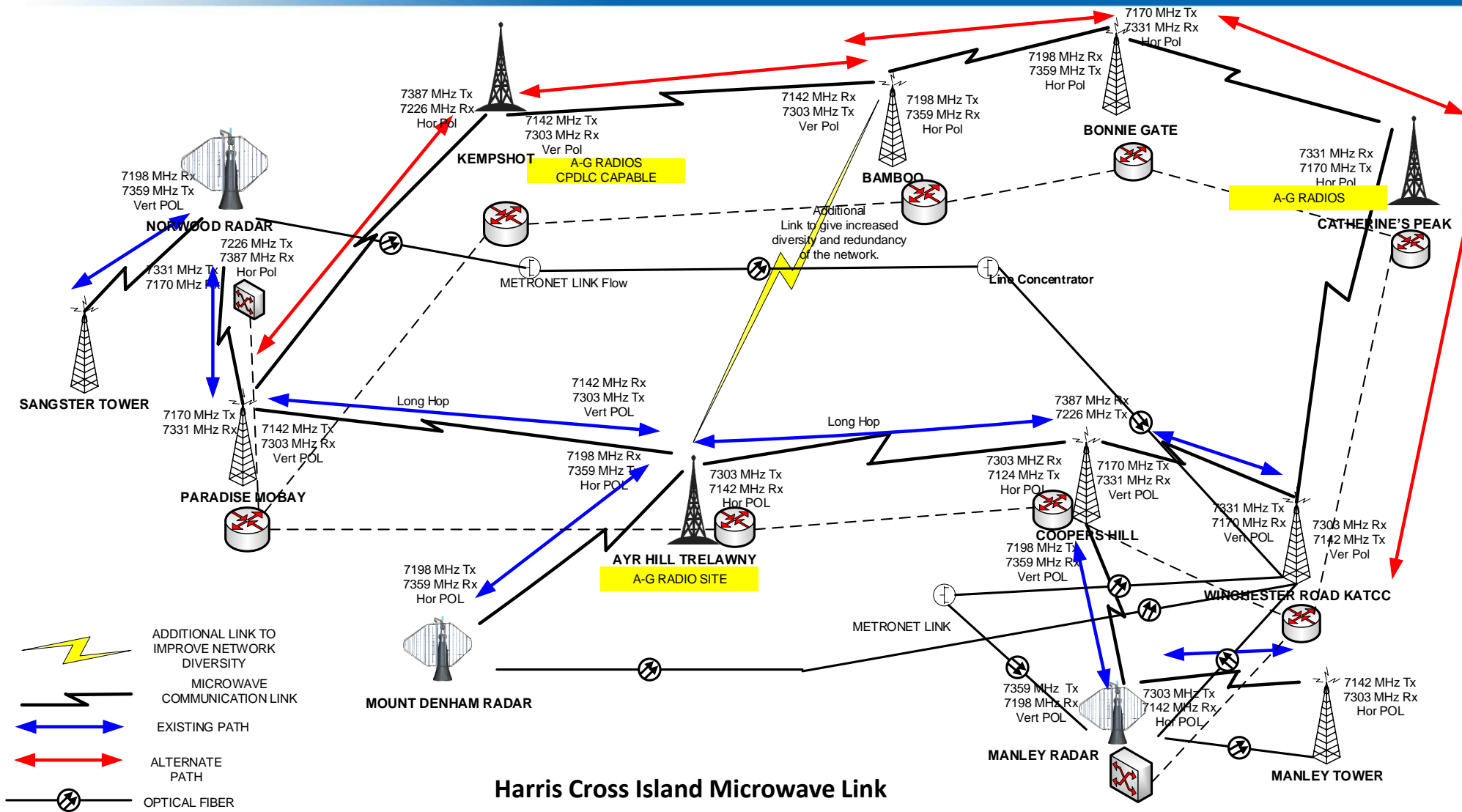
Aircraft Count into MKJP throughout 24 Hours

Oct 2018 – February 2019



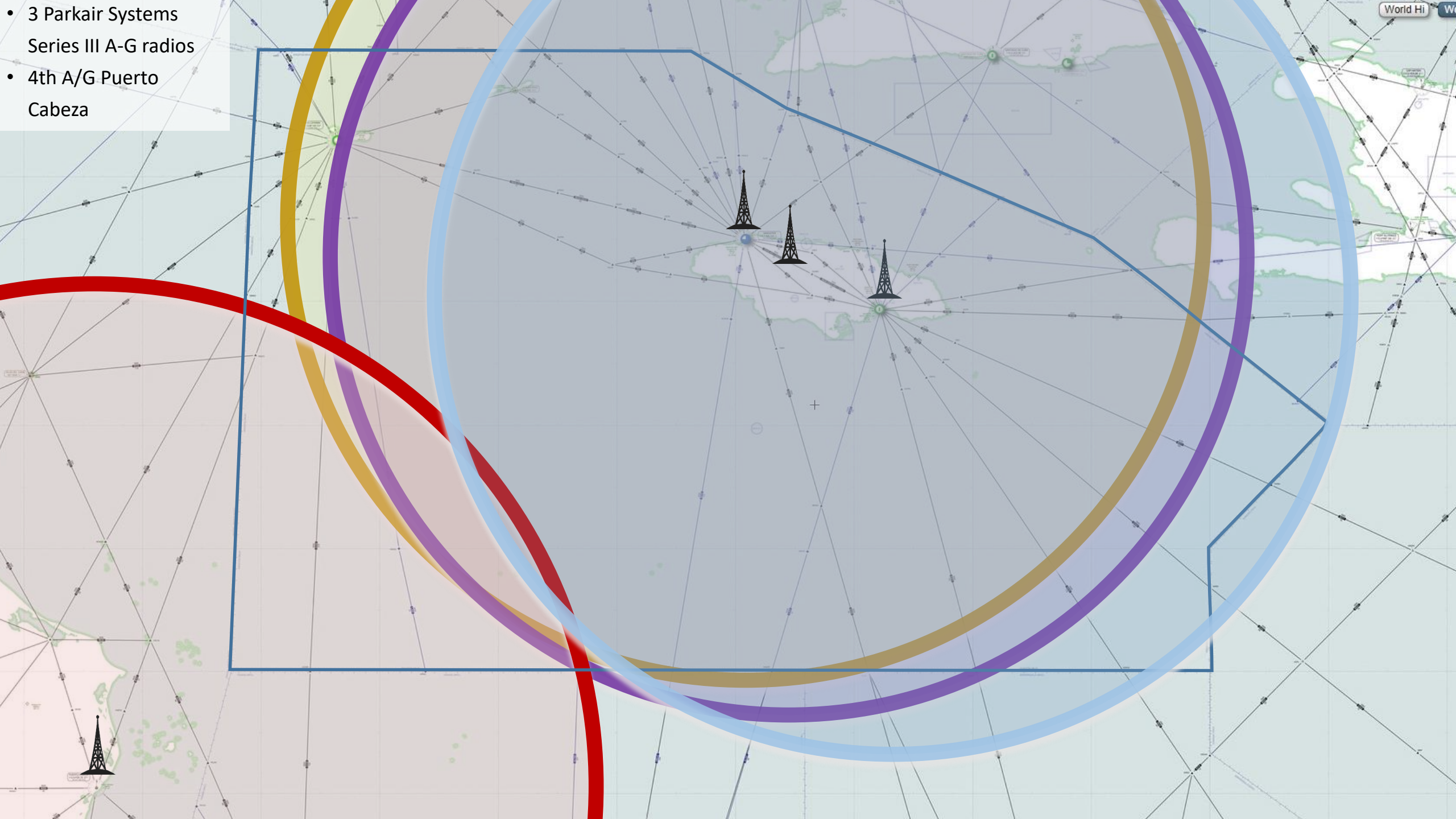


Communication



Harris Cross Island Microwave Link

- 3 Parkair Systems
- Series III A-G radios
- 4th A/G Puerto Cabeza





Surveillance

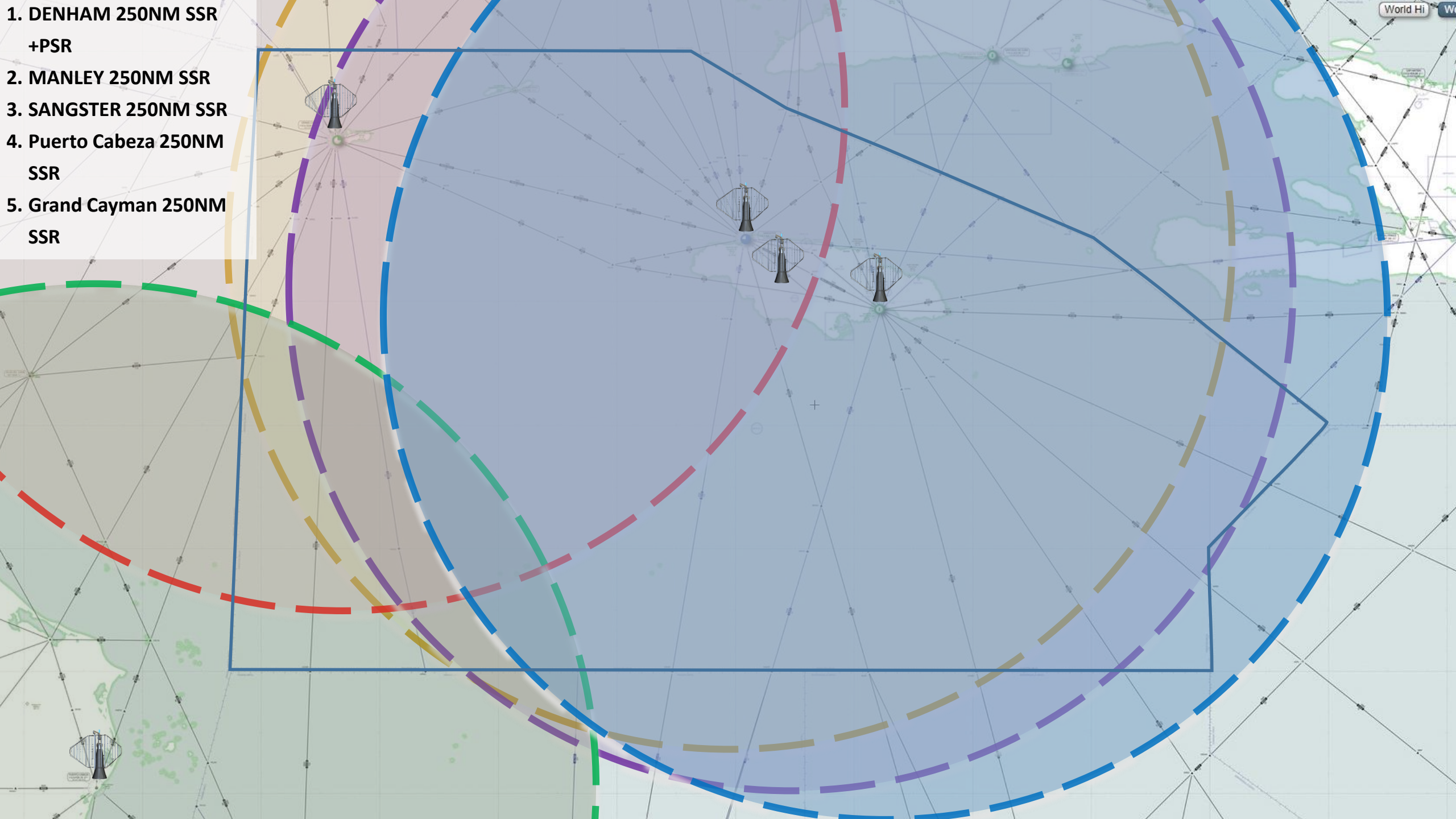


DENHAM 250NM
SSR +PSR

MANLEY 250NM
SSR

NORWOOD
250NM SSR

1. DENHAM 250NM SSR
+PSR
2. MANLEY 250NM SSR
3. SANGSTER 250NM SSR
4. Puerto Cabeza 250NM
SSR
5. Grand Cayman 250NM
SSR





Integrated ATC system



THALES TopSky-ATC system

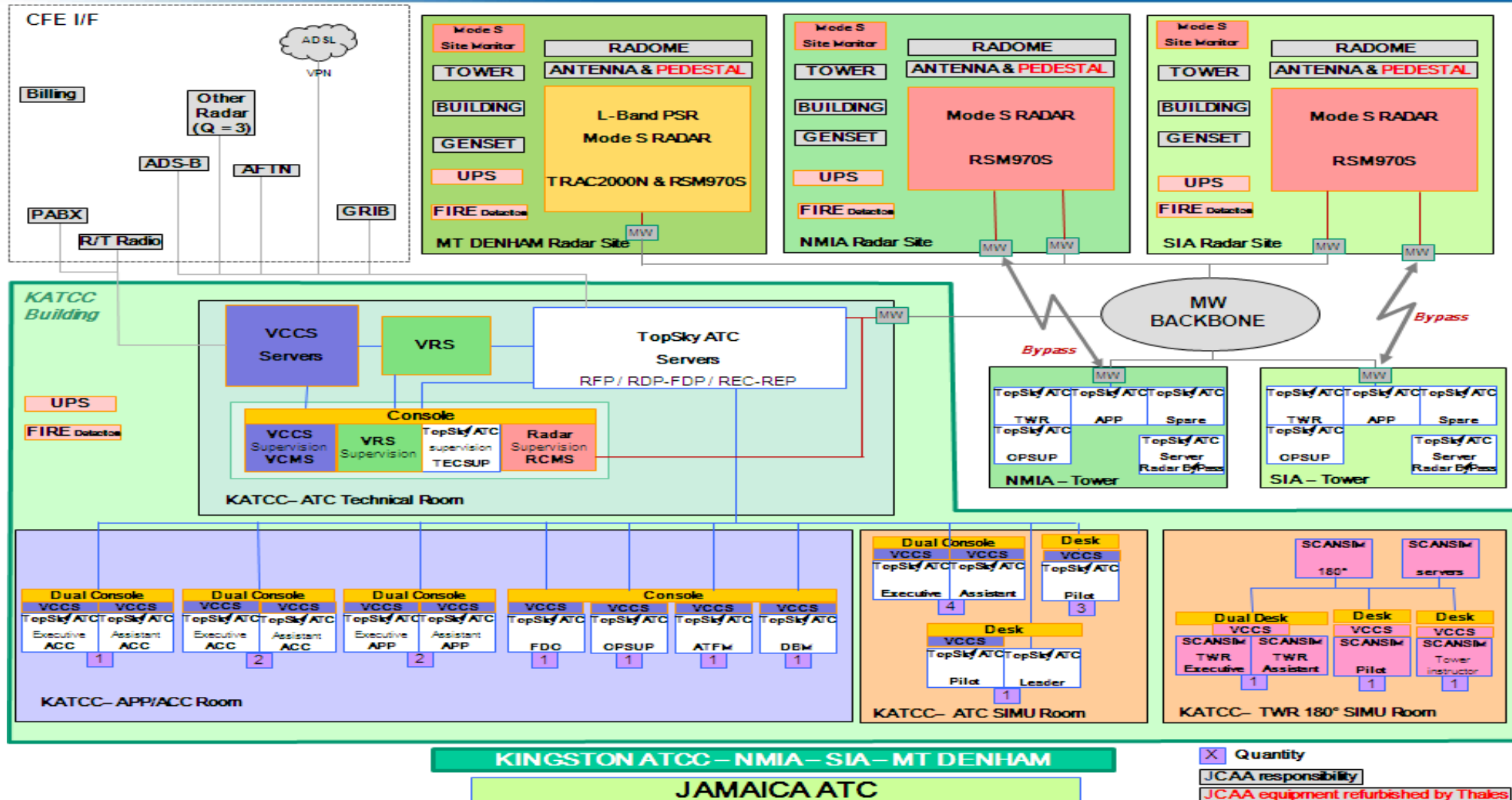
- *The system is fully integrated with enroute and tower simulators.*
- **KATCC**
 - 5 Dual ACC Operator Working Position.
 - Operational Supervisor
 - FDO+ATFM
- **CAATI Simulator**
 - 4 Dual ACC Operator Working Positions,
 - 4 ATC Pilots and 1 ATC Instructor.
- **NMIA and SIA Tower**
 - 1 dual ACC Operator Working Position (SIA and NMIA Contingency room)
 - 2 Single ACC Operator Working Position (SIA and NMIA tower cab)
- **Tower Simulator (ScanSim)**
 - 1 dual Tower Operator Working Position 180 deg display (3 screens)
 - 1 ATC Pilot + 1 ATC Instructor



Integrated ATC system



- **VCCS (Voice Control Communication System).**
 - Approach, ACC Operator and Simulator Positions.
 - Backup System for all positions.
- **Voice Recording System.**





KATCC





QUESTIONS & COMMENTS

