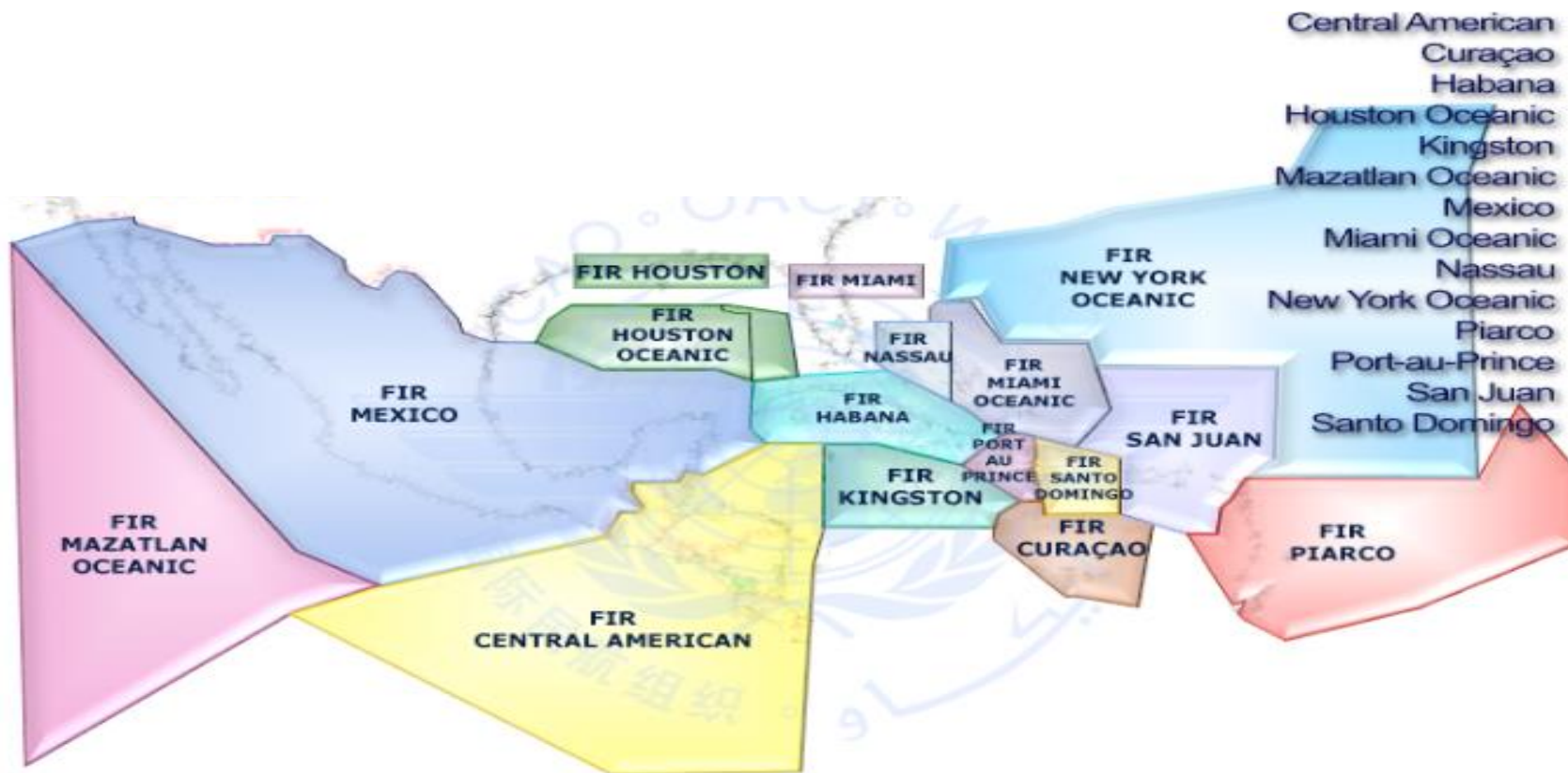


NAM ICD Automation Examples



AAL1400 Miami, Florida – Kingston, Jamaica

FPL 6 Jan 2020

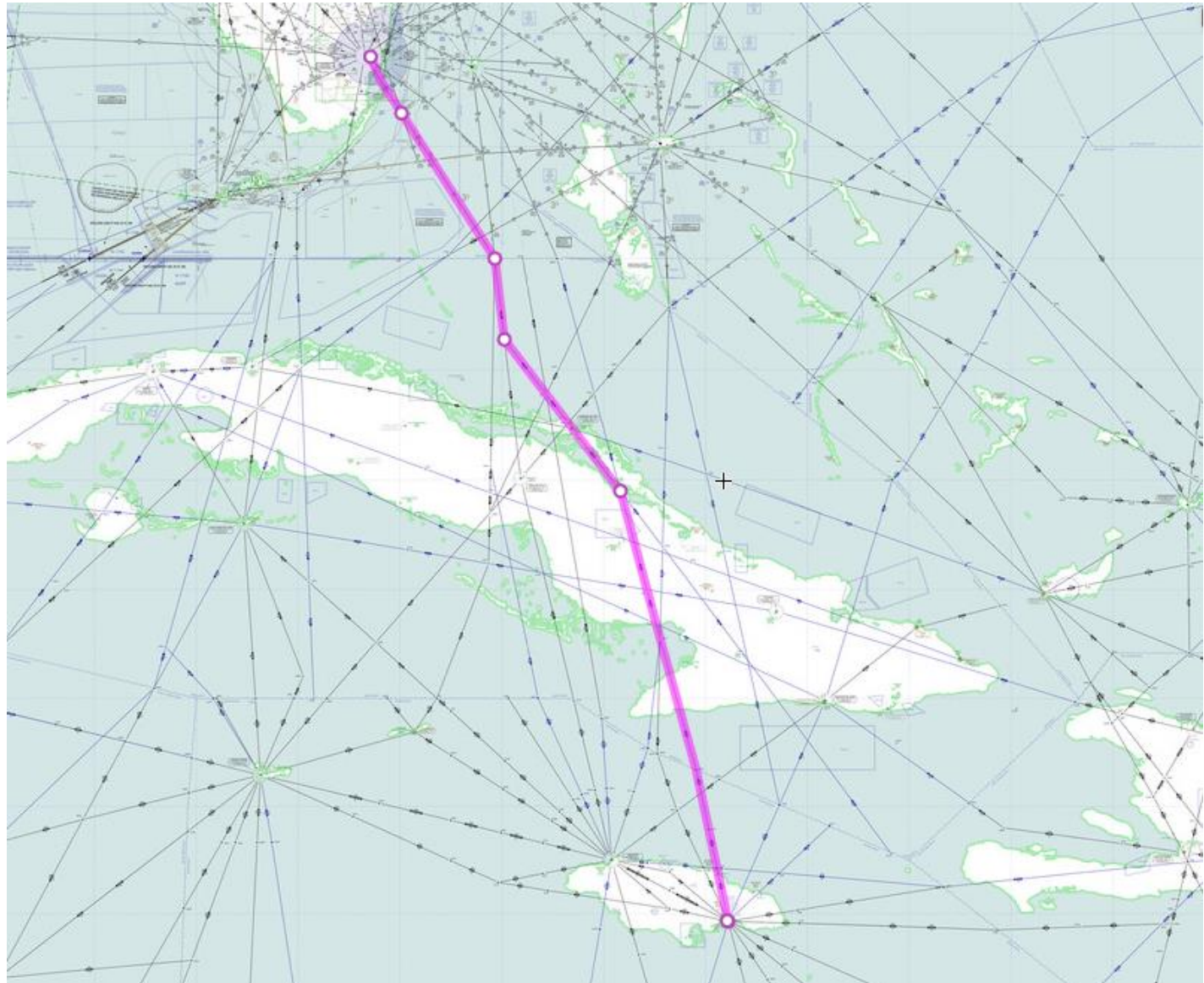
- Flight Plan (FPL) message sent to Miami Center (KZMAZZQA) where it is accepted
FPL Also sent to MUHAZQZX MUFHZQZX MUFHZRZX KZMAZRZZ KZMAZRZY MKJKZQZX MKJKZTZX MKJPZTZX
- Acceptance (ACK) message sent to American Airlines (KTULAALD) by Miami ERAM
- Flight originates at Miami International Airport (KMIA) and was scheduled to arrive at Norman Manley International (MKJP) at 0117

FF KZMAZZQA 061635 KTULAALD (FPL-AAL1400-IS -B738/M-SDE3GHIJ4RWXZ/B1L -KMIA1750 -N0461F350 EONNS2 EONNS A509 URSUS UG430 BIBAT UL795 LENAX/N0456F370 UL417 MLY DCT -MKJP0117 MKJS -PBN/A1B1C1D1O1S2T1 NAV/RNVD1E2A1 DAT/1FANSE2PDC SUR/260B DOF/200106 REG/N873NN EET/MUFH0020 MKJK0100 SEL/AEFL CODE/AC02B4)

FF KTULAALD 061635 KZCRZQZX ACK FPL KZMA AAL1400 KMIA 1750 MKJP

AAL1400 Miami – Kingston Route

KZMAZZQA 061635 KTULAALD
(FPL-AAL1400-IS
-B738/M-SDE3GHIJ4RWXZ/B1L
-KMIA1750
-N0461F350 EONNS2 EONNS A509
URSUS UG430 BIBAT UL795
LENAX/N0456F370 UL417 MLY DCT
-MKJP0117 MKJS
-PBN/A1B1C1D1O1S2T1
NAV/RNVD1E2A1 DAT/1FANSE2PDC
SUR/260B DOF/200106
REG/N873NN EET/MUFH0020
MKJK0100
SEL/AEFL CODE/AC02B4)



MUFH-KZMA Coordination Point URSUS



Coordination Points URSUS and ZEUSS



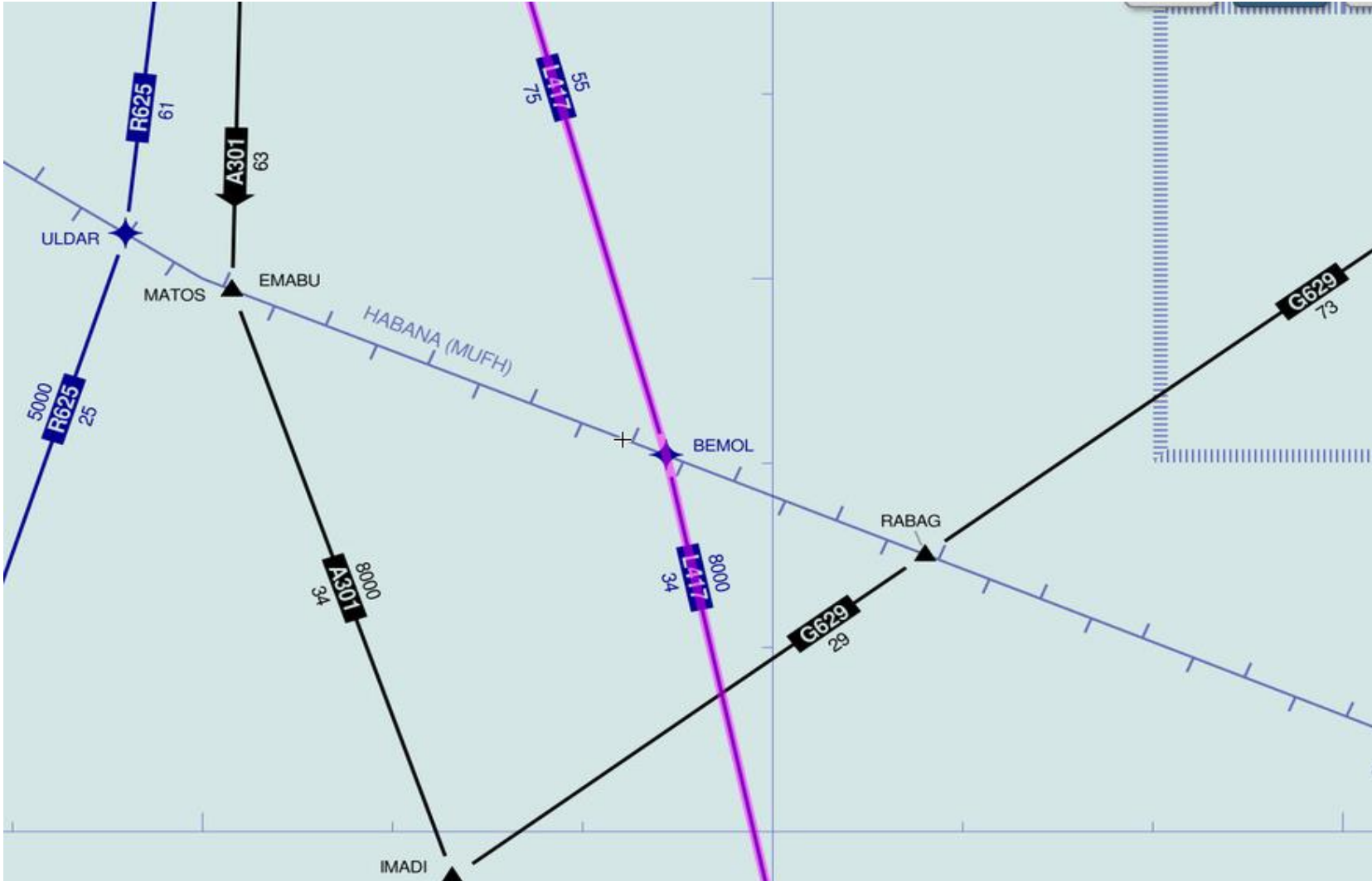
AAL1400 Miami, Florida – Kingston, Jamaica

CPL KZCRZQZX -MUFHZQZX

- Current Flight Plan (CPL) message sent from Miami Center (KZCRZQZX) to Havana Center where it is accepted
- CPL accepted by Havana Center and sends Logical Acceptance Message (LAM) back to Miami Center
- Flight transits from Miami International Airport (KMIA) Via Havana FIR and arrives at Norman Manley International (MKJP)
- FF MUFHZQZX 061804 KZCRZQZX (CPLKZMA/MUFH620-AAL1400/A2305-IS-B738/M-SDE3GHIJ4RWXZ/B1L-KMIA-URSUS/1817F350-N0461F350 URSUS UG430 BIBAT UL795 LENAX/N0456F370 UL417 MLY DCT-MKJP-PBN/A1B1C1D1O1S2T1 NAV/RNVD1A1E2 DAT/1FANSE2PDC SUR/260B DOF/200106 REG/N873NN EET/MUFH0020 MKJK0100 SEL/AEFL CODE/AC02B4)
- FF KZCRZQZX 061804 MUFHZQZX (LAMMUFH/KZMA088KZMA/MUFH620)

Note: CPL contains: Field 7 Beacon Mode/Code, Field 14a coordination (or boundary) fix and time at boundary fix. Field 15c truncated route as described in NAM ICD and boundary agreement

Tentative Coordination Point MUFH -MKJK



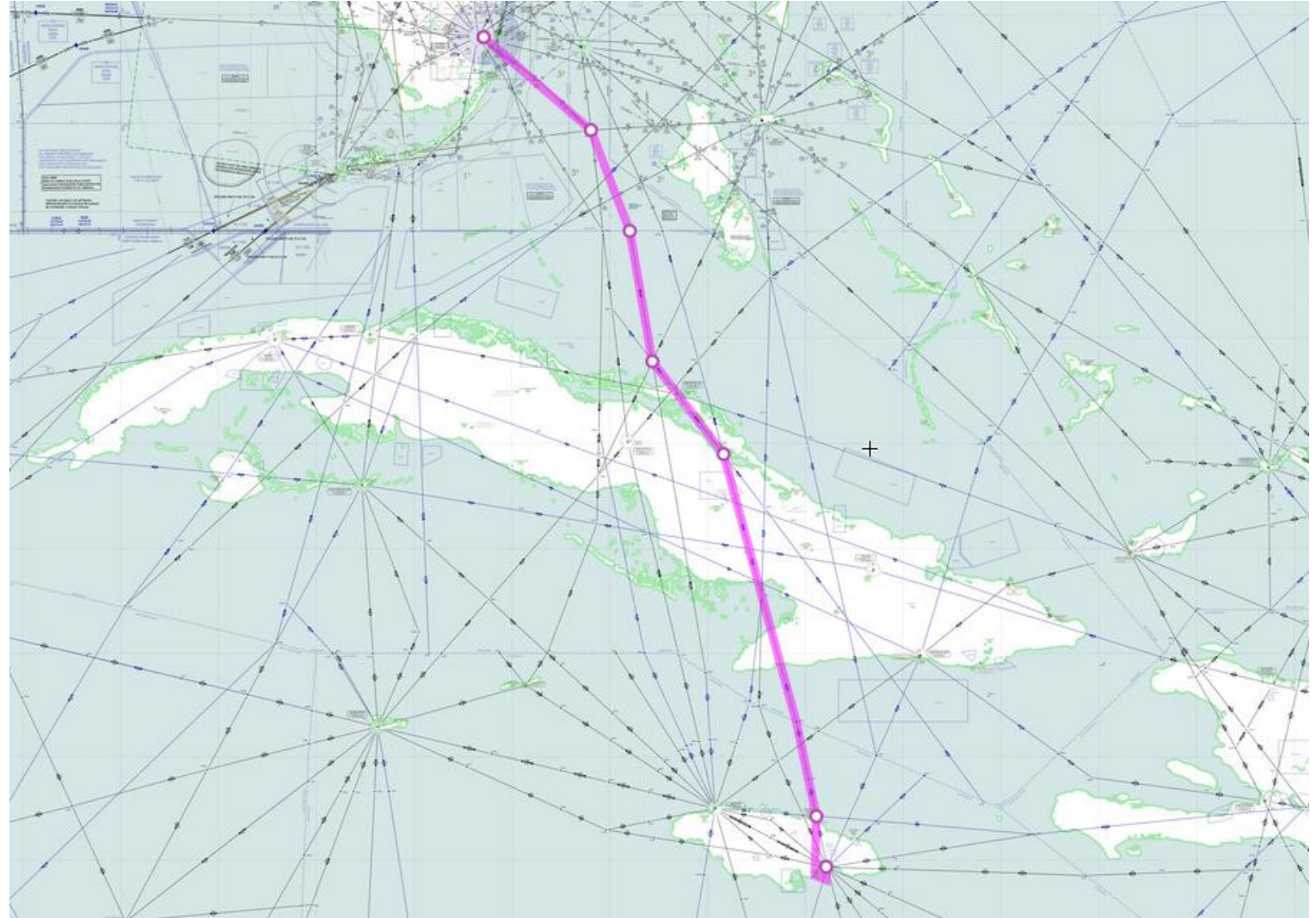
AAL2370 Kingston, Jamaica - Miami, Florida

FPL 7 Jan 2020

- Flight Plan (FPL) message sent to Miami Center where it is accepted. FPLs sent to addresses MUHAZQZX MUFHZRZX KZMAZRZZ KZMAZRZY MKJKZQZX MKJPYOYX MKJPZTZX
 - Acceptance (ACK) message sent to American Airlines (KTULAALD) from Miami Center ERAM (KZCRZQZX)
 - Flight originates at Norman Manley International (MKJP) and is scheduled to arrive at Miami International Airport (KMIA) at 0125
- FF KZMAZZQA 071047 KTULAALD (FPL-AAL2370-IS -B738/M-SDE3GHIJ4RWXZ/B1L -MKJP1202 -N0463F340 LEXUV3 RADOK UL417 LENAX UL795 ALTIB UM347 ZEUSS Y325 FOWEE FLIPR7 -KMIA0125 KFL -PBN/A1B1C1D1O1S2T1 NAV/RNVD1E2A1 DAT/1FANSE2PDC SUR/260B DOF/200107 REG/N835NN EET/MUFH0017 KZMA0054 SEL/ABHM CODE/AB6C26)
 - FF KTULAALD 071047 KZCRZQZX ACK FPL KZMA AAL2370 MKJP 1202 KMIA

AAL2370 Kingston - Miami

FF KZMAZZQA 071047 KTULAALD
(FPL-AAL2370-IS
-B738/M-SDE3GHIJ4RWXZ/B1L
-MKJP1202
-N0463F340 LEXUV3 RADOK UL417
LENAX UL795 ALTIB UM347 ZEUSS
Y325 FOWEE FLIPR7
-KMIA0125 KFL
-PBN/A1B1C1D1O1S2T1
NAV/RNVD1E2A1 DAT/1FANSE2PDC
SUR/260B DOF/200107
REG/N835NN EET/MUFH0017
KZMA0054 SEL/ABHM
CODE/AB6C26)



AAL2370 Kingston, Jamaica - Miami, Florida

CPL MUFHZQZX - KZCRZQZX

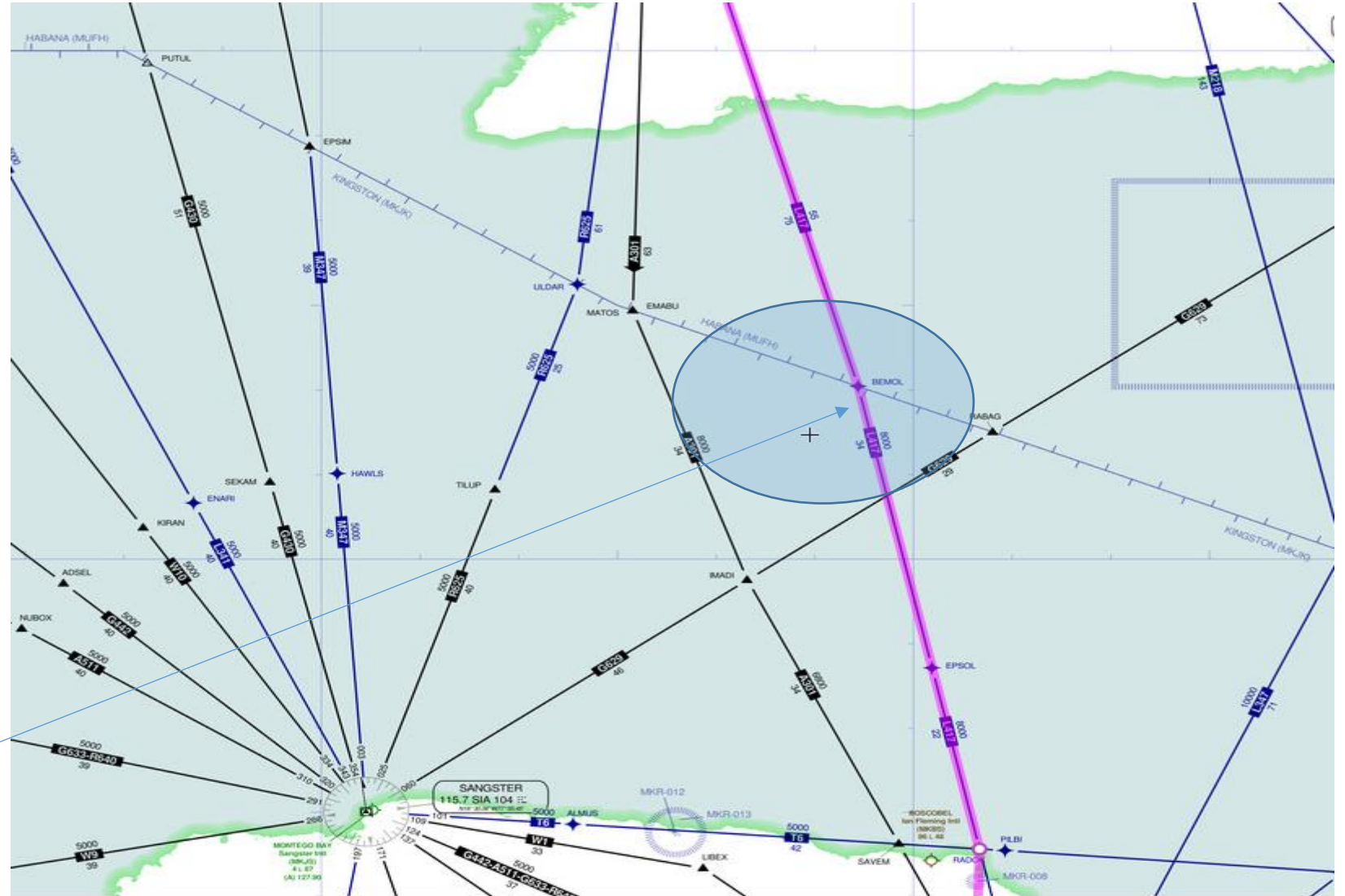
- Current Flight Plan (CPL) message sent from Havana Center (MUFHZQZX) to Miami Center where it is accepted
- To acknowledge CPL acceptance Logical Acceptance Message (LAM) sent from Miami Center to Havana Center
- Flight transits from Norman Manley International (MKJP) and is scheduled to arrive at Miami International Airport (KMIA) at 0054
- FF KZCRZQZX 071247 MUFHZQZX (CPLMUFH/KZMA972-AAL2370/A6736-IS-B738/M-SDE3GHIJ4RWXZ/B1L-MKJP-ZEUSS/1302F340-N0463F340 ZEUSS Y325 FOWEE FLIPR7-KMIA-PBN/A1B1C1D1O1S2T1 NAV/RNVD1E2A1 DAT/1FANSE2PDC SUR/260B DOF/200107 REG/N835NN EET/MUFH0017 KZMA0054 SEL/ABHM CODE/AB6C26)
- FF MUFHZQZX 071247 KZCRZQZX (LAMKZMA/MUFH234MUFH/KZMA972)

Note: CPL contains: Field 7 Beacon Mode/Code, Field 14a coordination (or boundary) fix and time at boundary fix and Field 15c truncated route as described in NAM ICD/boundary agreement

AAL2370 Kingston - Miami

FF KZMAZZQA 071047 KTULAALD
(FPL-AAL2370-IS
-B738/M-SDE3GHIJ4RWXZ/B1L
-MKJP1202
-N0463F340 LEXUV3 **RADOK UL417**
LENAX UL795 ALTIB UM347 ZEUSS
Y325 FOWEE FLIPR7
-KMIA0125 KFL
-PBN/A1B1C1D1O1S2T1
NAV/RNVD1E2A1 DAT/1FANSE2PDC
SUR/260B DOF/200107
REG/N835NN EET/MUFH0017
KZMA0054 SEL/ABHM
CODE/AB6C26)

BEMOL



AAL2370 Kingston - Miami

FF KZMAZZQA 071047 KTULAALD
(FPL-AAL2370-IS
-B738/M-SDE3GHIJ4RWXZ/B1L
-MKJP1202
-N0463F340 LEXUV3 RADOK UL417
LENAX UL795 ALTIB UM347 **ZEUSS**
Y325 FOWEE FLIPR7
-KMIA0125 KFL
-PBN/A1B1C1D1O1S2T1
NAV/RNVD1E2A1 DAT/1FANSE2PDC
SUR/260B DOF/200107
REG/N835NN EET/MUFH0017
KZMA0054 SEL/ABHM
CODE/AB6C26)



AAL2370 Compare

- FPL Compare Jan 7 & 8

- FF KZMAZZQA 071047 KTULAALD (FPL-AAL2370-IS -B738/M-SDE3GHIJ4RWXZ/B1L -MKJP1202 -N0463F340 LEXUV3 RADOK UL417 LENAX UL795 ALTIB UM347 ZEUSS Y325 FOWEE FLIPR7 -KMIA0125 KFL -PBN/A1B1C1D1O1S2T1 NAV/RNVD1E2A1 DAT/1FANSE2PDC SUR/260B DOF/200107 REG/N835NN EET/MUFH0017 KZMA0054 SEL/ABHM CODE/AB6C26)

- FF KZMAZZQA 081047 KTULAALD (FPL-AAL2370-IS -B738/M-SDE3GHIJ4RWXZ/B1L -MKJP1202 -N0461F340 LEXUV3 RADOK UL417 LENAX UL795 ALTIB UM347 ZEUSS Y325 FOWEE FLIPR7 -KMIA0124 KFL -PBN/A1B1C1D1O1S2T1 NAV/RNVD1E2A1 DAT/1FANSE2PDC SUR/260B DOF/200108 REG/N840NN EET/MUFH0017 KZMA0053 SEL/ACKL CODE/AB8112)

AAL2370 Kingston, Jamaica - Miami, Florida

- CPL Compare Jan 7 & 8
 - FF KZCRZQZX 071247 MUFHZQZX (CPLMUFH/KZMA972-AAL2370/A6736-IS-B738/M-SDE3GHIJ4RWXZ/B1L-MKJP-ZEUSS/1302F340-N0463F340 ZEUSS Y325 FOWEE FLIPR7-KMIA-PBN/A1B1C1D1O1S2T1 NAV/RNVD1E2A1 DAT/1FANSE2PDC SUR/260B DOF/200107 REG/N835NN EET/MUFH0017 KZMA0054 SEL/ABHM CODE/AB6C26)
 - FF KZCRZQZX 081252 MUFHZQZX (CPLMUFH/KZMA553-AAL2370/A6774-IS-B738/M-SDE3GHIJ4RWXZ/B1L-MKJP-ZEUSS/1307F320-N0461F320 ZEUSS Y325 FOWEE FLIPR7-KMIA-PBN/A1B1C1D1O1S2T1 NAV/RNVD1E2A1 DAT/1FANSE2PDC SUR/260B DOF/200108 REG/N840NN EET/MUFH0017 KZMA0053 SEL/ACKL CODE/AB8112)