



ICAO

International Civil Aviation Organization  
North American, Central American and Caribbean Office

WORKING PAPER

GTE/20 — WP/04

09/10/20

**CAR/SAM Planning and Implementation Regional Group (GREPECAS) Twentieth Scrutiny Working  
Group Meeting (GTE/20)**

Online, 9 – 11 November 2020

- Agenda Item 2: Review of the Results of Large Height Deviation (LHD)**  
**2.3 Results of the assessment project for safety in RVSM airspace for the  
CAR and SAM Regions**

**Safety Assessment in the RVSM Airspace of the CAR/SAM FIRs**

(Presented by CARSAMMA)

| <b>EXECUTIVE SUMMARY</b>  |  |
|---|--|
| This Working Paper presents a summary of the reports of Large Altitude Deviations (LHD) received by CARSAMMA, and the analysis with the Safety Management System Methodology (SGSO)/Safety Management System (SMS) methodology advocated by ICAO and reaffirmed during the GREPECAS meeting as a recommendation for its application by CARSAMMA in the CAR/SAM Regions. |  |
| <b>Action:</b>  | Suggested actions are presented in Section 5.  |
| <i>Strategic Objectives:</i>  | <ul style="list-style-type: none"><li>• Safety</li></ul>   |
| <i>References:</i>  | <ul style="list-style-type: none"><li>• Safety Management System Methodology (SGSO) – ICAO.</li><li>• Large Height Deviations (LHD) Report in 2019</li></ul> |

**1. Introduction**

1.1 The CAR/SAM Planning and Implementation Regional Group (GREPECAS) delegated to the Caribbean and South American Monitoring Agency (CARSAMMA) the implementation of the role of the SGSO/SMS methodology in the analysis of the LHD.

1.2. The SMS is used to estimate the Value at Risk of the System.

1.3. An important improvement of the methodology in the analysis of SGSO LHD is the risk assessment system and rapid identification of trends, and the critical points where they occur, reducing the calculation time of the system safety analysis.

1.4. The objective of this work is to offer a summary of the RVSM airspace safety assessment in the CAR/SAM FIRs. The safety assessment was carried out over a continuous twelve-month period.

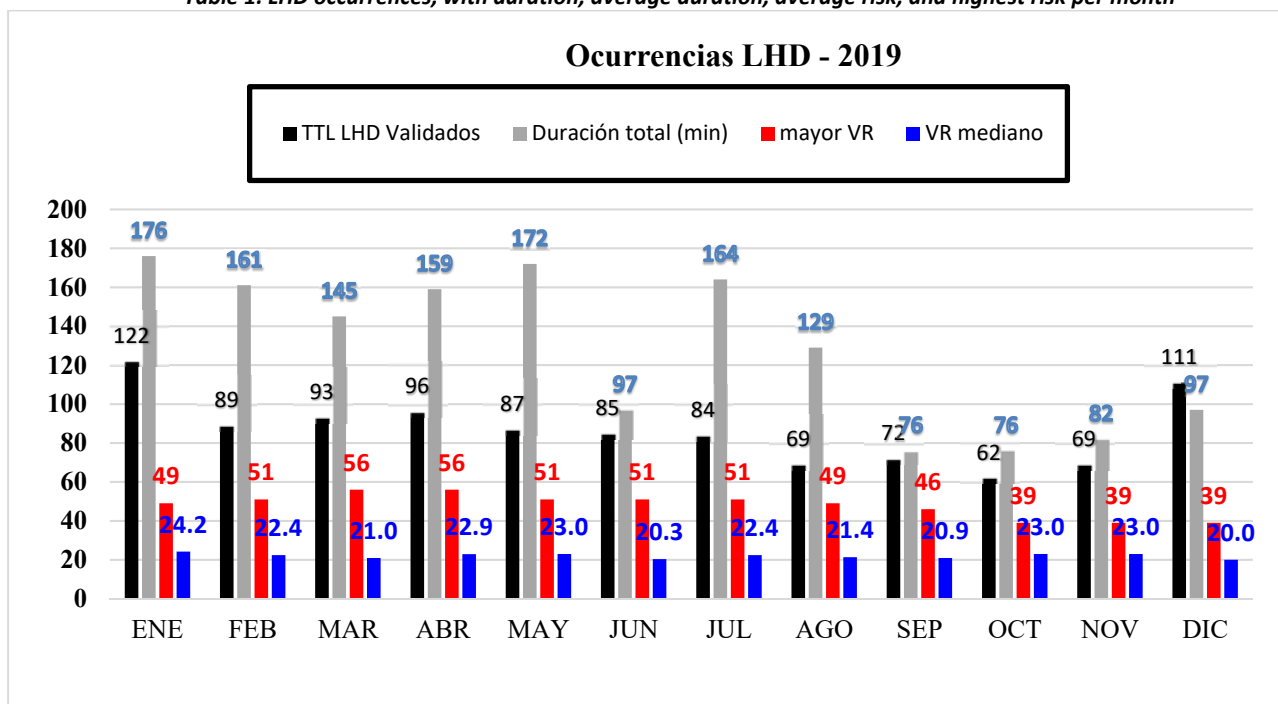
## 2. Context

2.1 LHD reports from a 12-month period were used in this safety assessment, between January and December 2019.

2.2. **Table 1** and **Graph 1** show the summary of the validated LHD occurrences and duration (in minutes) associated with the LHD per month that were received by CARSAMMA.

| MONTH        | LHD QUANTITY | DURATION Total (min.) | DURATION Average (min.) | RISK Average | Higher RISK |
|--------------|--------------|-----------------------|-------------------------|--------------|-------------|
| JANUARY      | 122          | 176                   | 1,44                    | 24,2         | 49          |
| FEBRUARY     | 89           | 161                   | 1,81                    | 22,4         | 51          |
| MARCH        | 93           | 145                   | 1,56                    | 21,0         | 56          |
| APRIL        | 96           | 159                   | 1,66                    | 22,9         | 56          |
| MAY          | 87           | 172                   | 1,98                    | 23,0         | 51          |
| JUNE         | 85           | 97                    | 1,14                    | 20,3         | 51          |
| JULY         | 84           | 164                   | 1,95                    | 22,4         | 51          |
| AUGUST       | 69           | 129                   | 1,87                    | 21,4         | 49          |
| SEPTEMBER    | 72           | 76                    | 1,06                    | 20,9         | 46          |
| OCTOBER      | 62           | 76                    | 1,23                    | 23,0         | 39          |
| NOVEMBER     | 69           | 82                    | 1,19                    | 23,0         | 39          |
| DECEMBER     | 111          | 97                    | 0,87                    | 20,0         | 39          |
| <b>TOTAL</b> | <b>1.039</b> | <b>1.534</b>          | <b>1,48</b>             | <b>22,0</b>  |             |

Table 1. LHD occurrences, with duration, average duration, average risk, and highest risk per month



Graph 1. LHD occurrences, with average duration, average risk, and highest risk per month

2.3. Five (5) situations occurred in July, reaching a total of 84 minutes of the total 164 minutes of failures that happened this month, equivalent to 51% of the duration only with these five reports. Four events happened in the Comodoro Rivadavia FIR, report 725 (VR = 51) due to lack of coordination of the Mount Pleasant APP, 53 minutes and the other three due to coordination failure of the Ezeiza ACC, reports 727, 752, 770 (VR = 51) and report 707 (VR = 34) due to lack of coordination between ACC Lima and Antofagasta ACC, 7 minutes.

2.4. In February, five (5) situations occurred reaching 69 minutes of the total 132 minutes of failures that occurred this month, equivalent to 52% of the duration only with these 5 reports. The reports occurred in the FIRs: Curaçao due to lack of coordination of the Santo Domingo ACC, 10 minutes, report 210 (VR = 34), Comodoro Rivadavia FIR, due to pilot failure, 30 minutes, reports 222 (VR = 16), Curitiba FIR, due to Pilot failure, 5 minutes, report 227 (VR = 19), Lima FIR, due to coordination failure of La Paz ACC, 14 minutes, report 239 (VR = 51) and Antofagasta FIR, due to ACC Lima coordination failure, 10 minutes, report 254 (VR = 46).

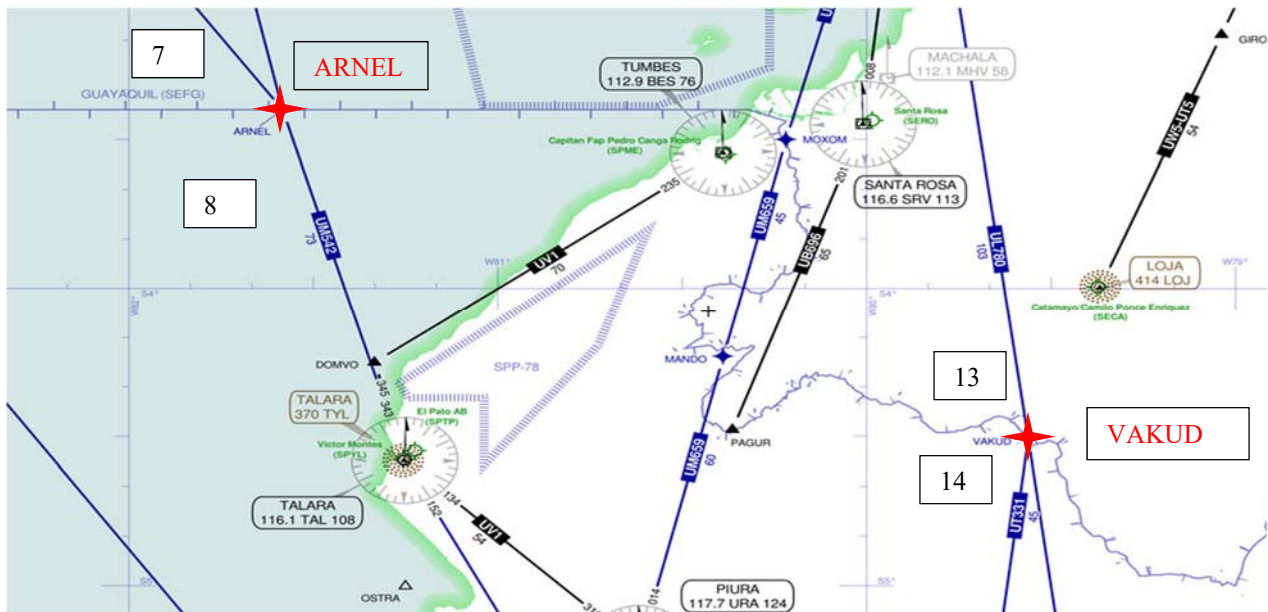
2.5. In August, there were two (2) situations reaching a total of 67 minutes of the total 130 minutes of failures that occurred this month, equivalent to 52% of the duration only with these two (2) reports. The reports happened in the FIRs: La Paz due to lack of coordination of ACC Curitiba, 60 minutes, report 817 (VR = 49) and Asunción FIR, due to lack of coordination of La Paz ACC, 7 minutes, report 865 (VR = 46).

2.6. In May, five (5) situations occurred reaching 81 minutes of the total 172 minutes of failures that occurred this month, that is, 47% of the duration only with these five (5) reports. The reports happened in the FIRs: Lima due to coordination failure of the Guayaquil ACC, 18 minutes, report 499 (VR = 46), Central American FIR, due to coordination failure of the Mérida ACC, 5 minutes, reports 512 (VR = 41), Asunción FIR, due to coordination failure of La Paz ACC, 15 minutes, report 556 (VR = 46), Barranquilla FIR, due to Pilot failure, 38 minutes, report 570 (VR = 19) and Antofagasta FIR, due to coordination failure of the Lima ACC, 5 minutes, report 590 (VR = 46).

2.7. LHD reports occurred in every month of 2019 in which the Guayaquil FIR suffers risk due to failures/errors of the Bogotá ACC, due to bad coordination, lack of coordination or transfer problems due to equipment, whose TCPs involved are UGUPI, BOKAN, PULTU and ENSOL, a total of 132 faults committed by Bogotá ACC with Guayaquil ACC. The Guayaquil ACC also committed the same failures in these TCPs with the Bogotá ACC, but with a lower number of failures, a total of 35 failures. In **Figure 1** below, we can see all the TCPs reported above and the number of reports in each of the TCPs. It is recommended the implementation of mitigating measures.



2.9. During 2019, were reported LHDs in which the Lima FIR suffers risk, due to errors in coordination, lack of coordination, or transfer problems due to equipment failures of the ACC Guayaquil. The TCPs involved are VAKUD and ARNEL, 22 failures committed by ACC Guayaquil with ACC Lima. Similar errors were also identified with the Lima ACC, in these TCPs with the Guayaquil ACC, with a similar number of failures, 20 errors. **Figure 3** shows all the TCPs reported above and the number of reports in each of the TCPs.



**Figura3. LHD occurrences at the most reported points between the Lima FIR and the Guayaquil FIR**

2.10. During 2019, there were reported LHDs in which the Bogotá FIR suffers the risk from Panama ACC with 17 events in DAKMO, from Lima ACC five (5) events in PLG, and Maiquetía ACC with seven failures in KIKAS. The cause was an error in the coordination, lack of coordination, or transfer problems due to equipment failure. Similar errors were also identified with the Bogotá ACC: in the DAKMO TCP with the Panama ACC with one (1) event, in the PLG TCP with the Lima ACC, 13 events, and KIKAS TCP with the Maiquetia ACC with seven (7) events.

2.11. During 2019, there were reported LHDs in which the Lima FIR suffers risk due to failures/errors of the Antofagasta ACC, five (5) failures in the IREMI TCP, and the La Paz ACC, ten (10) events in the DOBNI TCP. Similar errors were also identified with the Lima ACC, in the IREMI TCP with the Antofagasta ACC, 12 failures and the DOBNI TCP with the La Paz ACC, 5 failures.

2.12. During 2019, there were reported LHDs in which the Santo Domingo FIR suffers risk due to failures/errors of the Curaçao ACC, 19 failures in the VESKA TCP. The Santo Domingo ACC also made the same failure, in the TCP VESKA, one (1) failure.

2.13. During 2019, there were reported LHDs in which the Guayaquil FIR suffers risk due to failures errors of the Central America ACC, eight (8) failures in the LIXAS TCP. Similar errors were identified with the Guayaquil ACC, in the LIXAS TCP with the Central America ACC, six (6) failures.

2.14. In Table 2 below, we can better observe what was said in items 2.7, 2.8, 2.9, 2.10, 2.11, 2.12, and 2.13. We will see all the FIRs involved in the most reported TCPs in 2019.

| FIR SUFFERING THE RISK | FIR WITH THE FAILURE | REPORTS MADE | TCP   | QUANTITY BY FIR | TOTAL GENERAL |
|------------------------|----------------------|--------------|-------|-----------------|---------------|
| GUAYAQUIL              | BOGOTA               | 60           | UGUPI | 132             | 160           |
|                        |                      | 27           | BOKAN |                 |               |
|                        |                      | 29           | PULTU |                 |               |
|                        |                      | 16           | ENSOL |                 |               |
|                        | LIMA                 | 13           | VAKUD | 20              |               |
|                        |                      | 7            | ARNEL |                 |               |
|                        | CENTRAL AMÉRICA      | 8            | LIXAS | 8               |               |
| BOGOTÁ                 | GUAYAQUIL            | 15           | UGUPI | 35              | 64            |
|                        |                      | 11           | BOKAN |                 |               |
|                        |                      | 4            | PULTU |                 |               |
|                        |                      | 5            | ENSOL |                 |               |
|                        | MAIQUETIA            | 7            | KIKAS | 7               |               |
|                        | PANAMÁ               | 17           | DAKMO | 17              |               |
|                        | LIMA                 | 5            | PLG   | 5               |               |
| LIMA                   | GUAYAQUIL            | 14           | VAKUD | 22              | 50            |
|                        |                      | 8            | ARNEL |                 |               |
|                        | BOGOTÁ               | 13           | PLG   | 13              |               |
|                        | ANTOFAGASTA          | 5            | IREMI | 5               |               |
|                        | LA PAZ               | 10           | DOBNI | 10              |               |
| CURAZAO                | BARRANQUILLA         | 15           | OROSA | 36              | 37            |
|                        |                      | 9            | AMBAS |                 |               |
|                        |                      | 12           | SELAN |                 |               |
|                        | SANTO DOMINGO        | 1            | VESKA | 1               |               |
| SANTO DOMINGO          | CURAZAO              | 19           | VESKA | 19              | 19            |
| FIR SUFFERING THE RISK | FIR WITH THE FAILURE | REPORTS MADE | TCP   | QUANTITY BY FIR | TOTAL GENERAL |
| RESISTENCIA            | EZEIZA               | 16           | KORTA | 16              | 16            |
| ANTOFAGASTA            | LIMA                 | 12           | IREMI | 12              | 12            |
| BARRANQUILLA           | CURAZAO              | 1            | OROSA | 9               | 9             |
|                        |                      | 6            | AMBAS |                 |               |
|                        |                      | 2            | SELAN |                 |               |
| MAIQUETIA              | BOGOTA               | 7            | KIKAS | 7               | 7             |
| CENTRAL AMÉRICA        | GUAYAQUIL            | 6            | LIXAS | 6               | 6             |
| LA PAZ                 | LIMA                 | 5            | DOBNI | 5               | 5             |
| PANAMÁ                 | BOGOTÁ               | 1            | DAKMO | 1               | 1             |

Table 2. LHD Points of occurrence, with the indication of the FIRs involved - Points with more reports

**NOTE: Note that there are 3 FIRs that are always present (in blue, red, and green).**

2.15. In almost every month of the year, LHD reports with duration greater than or equal to five (5) minutes occurred.

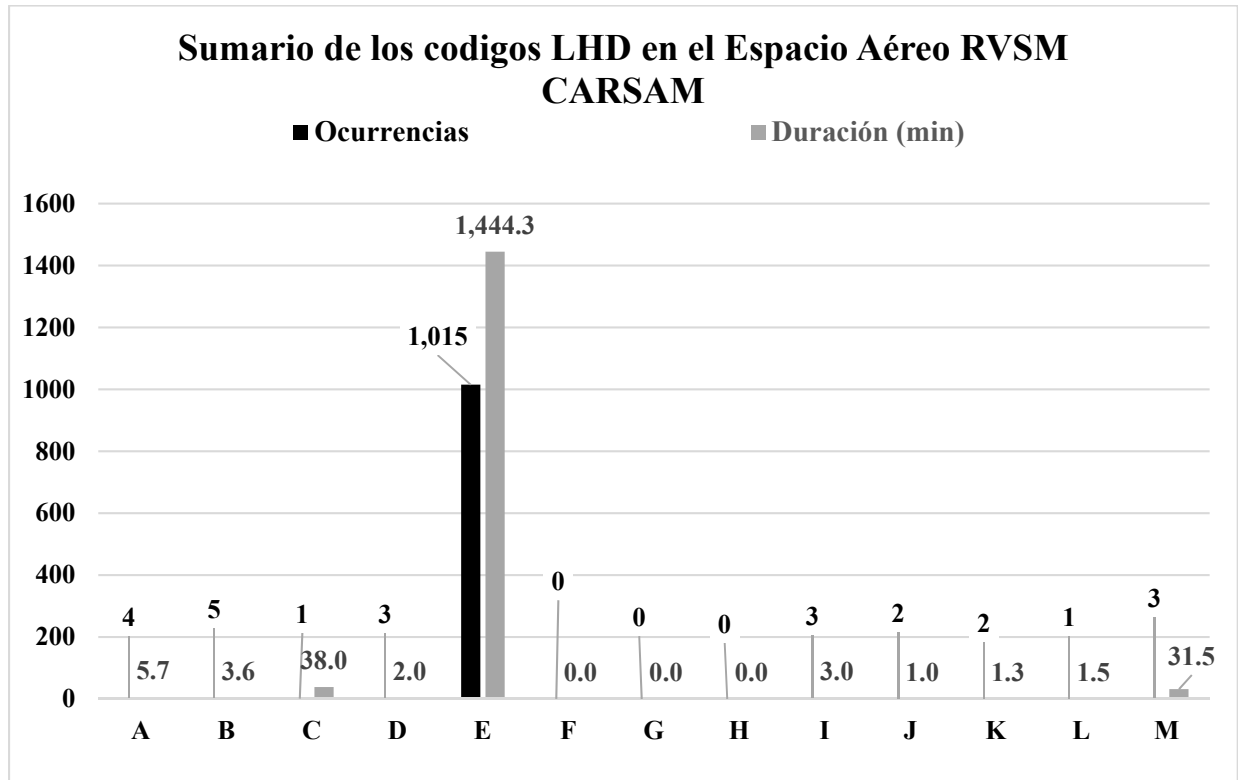
- 1 In the Antofagasta FIR, in the months of: January, two reports (15 minutes), February (10 minutes), April (14 minutes), May (5 minutes), and July (7 minutes), due to poor coordination of the Lima ACC.
- 2 In the Maiquetía FIR, in January 8 minutes and March 50 minutes due to error in the coordination of the San Juan ACC and the Amazonian ACC, respectively.
- 3 In the Lima FIR, in the months of February (14 minutes), April (13 minutes), May (18 minutes) and June (6 minutes), due to poor coordination of the La Paz ACC, La Paz ACC, Guayaquil ACC, and La Paz ACC, respectively.
- 4 In the La Paz FIR, in the months of January (12 minutes), August (60 minutes) and October (9 minutes), due to a failure in the coordination of the Resistencia ACC, Curitiba ACC, and Córdoba ACC, respectively.
- 5 In the Asunción FIR, in the months of January (8 minutes), May (15 minutes) and August (7 minutes), due to errors in the coordination of La Paz ACC in all cases.
- 6 In the Curaçao FIR, in the months of February (10 minutes), April (8 minutes) and September (13 minutes), due to errors in the coordination of the Santo Domingo ACC, Kingston ACC, and Maiquetia ACC, respectively.
- 7 In the Comodoro Rivadavia FIR, in the months of February (30 minutes), April (17 minutes) and July (53 minutes) and (24 minutes), due to failure of the pilot, to errors in the coordination of the Ezeiza ACC, Mount Pleasant ACC, and Ezeiza ACC, respectively.
- 8 In the Curitiba FIR, in February (5 minutes), due to failure of the pilot.
- 9 In the Barranquilla FIR, in the month of May (38 minutes), due to pilot error. .
- 10 In the Central American FIR, in May (5 minutes), due to errors in the MÉRIDA ACC's coordination.
- 11 In the Córdoba FIR, in the month of November (15 minutes), due to errors in the coordination of EZEIZA ACC.

2.16. **Table 3** (*available only in Spanish*) and **Graph2** present a summary of the number of occurrences of LHD reports, the duration (in minutes) associated with the LHD code and the number of flight levels crossed without authorization, from January 1 to December 31, 2019 including, in RVSM airspace of the CAR / SAM Region.

| LHD CODE     | Description of the LHD Codes  | Number of occurrences LHD | LHD duration (Min) | Levels crossed without authorization |
|--------------|---|---------------------------|--------------------|--------------------------------------|
| A            | La tripulación de vuelo no ascendió/descendió la aeronave según autorización.   | 4                         | 5,7                | 3                                    |
| B            | La tripulación de vuelo ascendió/descendió sin autorización del órgano ATC.   | 5                         | 3,6                | 3                                    |
| C            | Operación o interpretación incorrectas del equipo de a bordo (p. ej., funcionamiento incorrecto de FMS en pleno funcionamiento, transcripción incorrecta de la autorización ATC o nueva autorización, plan de vuelo seguido en lugar de la autorización ATC, autorización original seguida en lugar de la nueva autorización, etc.) | 1                         | 38,0               | 0                                    |
| D            | Error de bucle del sistema ATC (p. ej., entrega incorrecta de autorización del ATC o la tripulación de vuelo no entiende mensaje de autorización)   | 3                         | 2,0                | 5                                    |
| E            | Errores de coordinación entre unidades ATC de transferencia o la responsabilidad del control, como resultado de factores humanos (p.ej., coordinación tardía o inexistente; hora incorrecta de estimado/real; nivel de vuelo, ruta ATS, etc. que no se ajuste a los parámetros convenidos)  | 1015                      | 1.444,3            | 1124                                 |
| F            | Errores de coordinación entre unidades ATC de transferencia o la responsabilidad del control, como resultado de falla de equipo o problemas técnicos.   | 0                         | 0,0                | 0                                    |
| G            | Desviación debido aún suceso de contingencia del avión que llevó a una repentina incapacidad de mantener el nivel de vuelo asignado (p. ej., falla de presurización, falla de motor)  | 0                         | 0,0                | 0                                    |
| H            | Desviación por falla del equipo de a bordo que condujo a un cambio no intencionado o no detectado del nivel de vuelo  | 0                         | 0,0                | 0                                    |
| I            | Desviación debida a turbulencia u otra causa relacionada con las condiciones meteorológicas.  | 3                         | 3,0                | 6                                    |
| J            | Desviación debido a un aviso de resolución del TCAS; tripulación de vuelo sigue correctamente un aviso de resolución del TCAS   | 2                         | 1,0                | 1                                    |
| K            | Desviación debido a un aviso de resolución del TCAS; tripulación de vuelo sigue incorrectamente un aviso de resolución del TCAS.  | 2                         | 1,3                | 1                                    |
| L            | Una aeronave que no es aprobada RVSM a la cual se le provea de separación RVSM (p.ej., plan de vuelo indicando la aprobación RVSM, pero la aeronave no está aprobada; mala interpretación de plan de vuelo por parte del ATC)   | 1                         | 1,5                | 0                                    |
| M            | Otros -esto incluye los vuelos que operan (incluyendo, ascenso / descenso) en espacio aéreo en el que las tripulaciones de vuelo no es posible establecer comunicaciones aire-tierra normales con la dependencia ATS responsable.   | 3                         | 31,5               | 4                                    |
| <b>Total</b> | <b>(Ene 2019 – Dic 2019)</b>  | <b>1.039</b>              | <b>1.208,1</b>     | <b>1.147</b>                         |

*Table 3. Summary of LHD Occurrences and Duration by LHD Code*





**Graph 2. Summary of LHD Occurrences by Code**

2.17. As in previous years, LHD reports with Code “E” (coordination error between ATC units) were the most frequent in 2019 with 1,015 events, followed by Codes “B” (5), “A” (4), “D”, “I” and “M” (3), “C” and “L” (1). The high number of reports with Code “E” demonstrates the need for better coordination between adjacent ATC units, which could be achieved through awareness and training of coordination between controllers. It is important to mention that in 2019 the “F” Codes are not presented as in 2018. Following the 2020 teleconferences with the POCs it was agreed that the problem was not the equipment but the ATC personnel, and all 2019 reports were changed to “E1” and “E2”.

2.18. Likewise, in Graph 2, it can be observed that the LHD reports with Code “E” were the highest in terms of duration, being these the ones that most compromised safety, with a total time of 86,658 seconds or 1,444.3 minutes or 24.7 hours. This situation represents one of the riskiest since the aircraft were not expected in that position (E2), or at that level (E1).

**NOTE:** Attention is drawn to the two cases of Code “E”, “E1” for error in coordination (569 reports) and Code “E2” for lack of coordination (446 reports).

2.19. In **Graph 3**, the total levels by code that have occurred with level crossings without air traffic control authorization are shown. In this case, the Code “E” LHD reports were the most prominent, with 1,124 crossover levels.

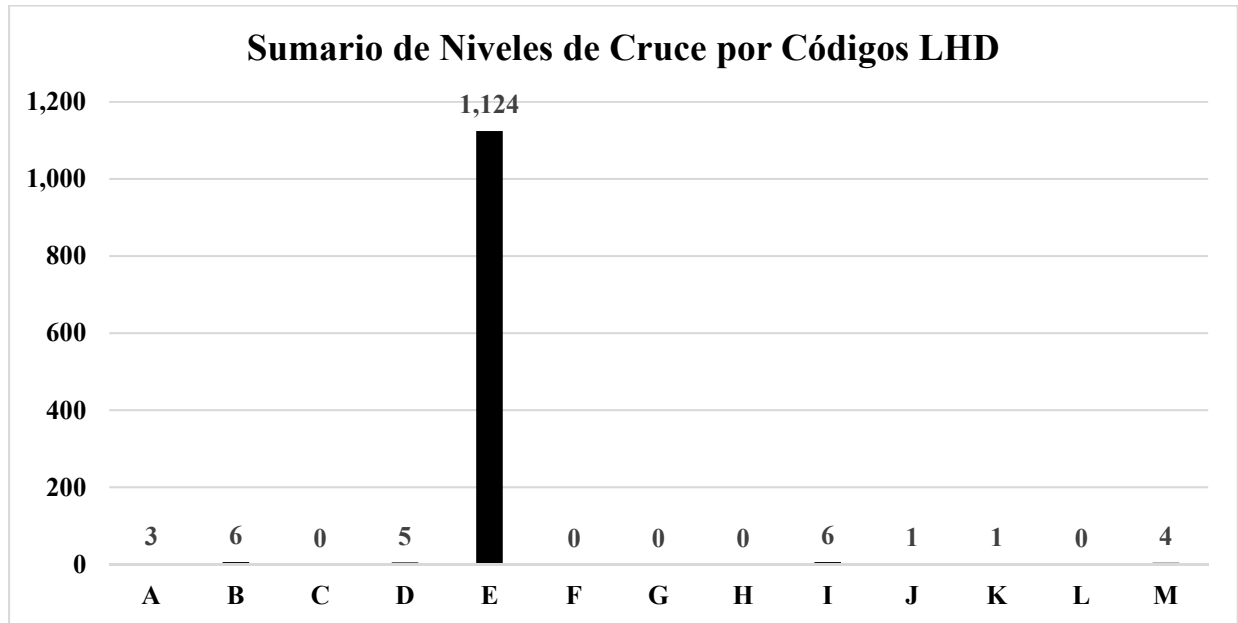
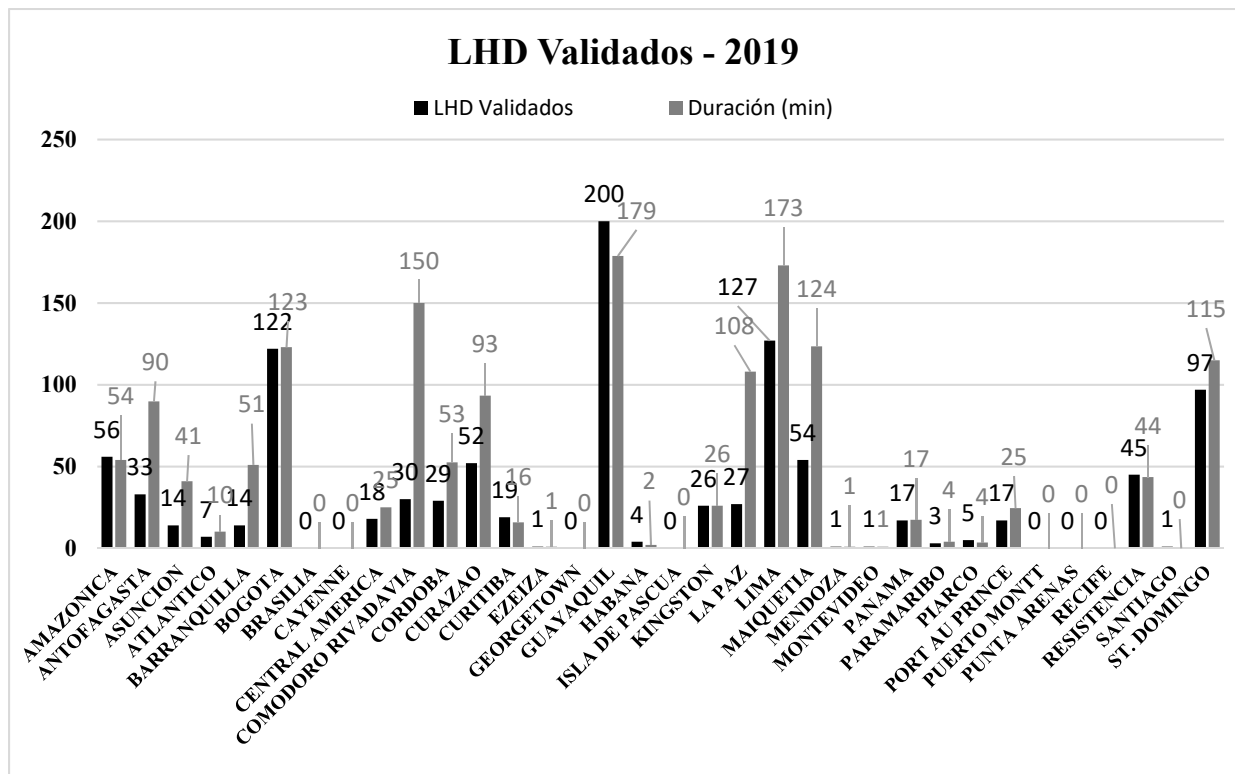


Gráfico 3. Sumario de las Ocurrencias LHD por Nivel de Cruce

2.20. In **Graph 4**, the quantity of all validated LHD reports is shown, separated by FIR. It should be considered that the Guayaquil and Lima FIRs have the highest absolute number of duration in minutes, leaving the aircraft flying these FIRs more exposed to operational risk.



Graph 4. Summary of LHD Occurrences by FIR

### 3. Risk Value Assessment (VR)

3.1. This section updates the results of the RVSM airspace safety assessment in the CAR/SAM FIRs. Therefore, the methodology to assess the value of risk (SMS/SMS) was applied to the safety assessment internationally accepted of this airspace.

3.2. Estimates of the Risk Value parameters - The quantity and starting material for estimating the values for each parameter inherent to the risk value (VR) accepted internationally, and that were used to carry out the safety assessment in RVSM airspace, are summarized in the following formula and described in **Table 4** (available only in Spanish).

$$\mathbf{VR = (P \times D \times S) + R + W + T, \text{ where:}}$$

| Parameter | Description                 | Value  |
|-----------|-----------------------------|--|
| <b>VR</b> | Valor del Riesgo            | El calcularse                                    |
| <b>P</b>  | Probabilidad de la Posición | Varía de 1 a 5                                   |
| <b>D</b>  | Duración del Evento         | Varía de 1 a 3                                   |
| <b>S</b>  | Severidad del Evento        | Varía de 1 a 5                                   |
| <b>R</b>  | Con o sin RADAR/ADS         | Con=5 o Sin=10                                   |
| <b>W</b>  | Condiciones del Tiempo      | VMC=0 o IMC=5                                    |
| <b>T</b>  | Otro Tráfico (si hubiera)   | El rango varía de 5 (con radar) o 10 (sin radar) |
|           | <b>TOTAL</b>                | <b>Maximum 100</b>                               |

Tabla 4. Calculation of the Risk Value parameters

3.3 Safety Assessment - Results of the RVSM airspace safety assessment of the CAR/ AM FIRs are detailed in **Table 5** and **Graph 5** (FIR with LHD reports with VR ≥ 39. The LoS limit was created in GTE 11 - ICAO, held in 2011 (Lima, Peru).

|     | LoS | SB<br>AO | SE<br>FG | SA<br>CU | MT<br>EG | AS<br>RU | SK<br>ED | MH<br>TG | SL<br>LF | SC<br>FZ | SG<br>FA | SP<br>IM | SV<br>ZM | SA<br>VU | MP<br>ZL | TN<br>CF |
|-----|-----|----------|----------|----------|----------|----------|----------|----------|----------|----------|----------|----------|----------|----------|----------|----------|
| ENE | 20  |          | 39       | 39       |          |          |          | 39       | 49       |          | 46       | 39       | 46       | 39       |          |          |
| FEB | 20  |          |          |          | 41       |          |          |          |          | 46       |          | 51       |          | 39       |          |          |
| MAR | 20  |          |          |          |          |          |          | 39       |          |          |          |          | 39       |          | 56       |          |
| ABR | 20  |          |          |          |          |          | 46       | 49       |          | 46       |          | 39       |          | 46       |          | 56       |
| MAY | 20  |          |          |          |          | 41       |          | 41       |          | 46       | 46       | 46       | 51       |          |          |          |
| JUN | 20  |          |          |          |          |          |          |          |          |          |          | 51       | 39       | 39       |          |          |
| JUL | 20  | 39       |          |          |          |          |          |          | 39       |          |          | 39       |          | 51       |          |          |
| AGO | 20  |          |          |          |          |          |          |          | 49       |          | 46       |          |          |          |          |          |
| SEP | 20  |          |          |          |          |          |          |          |          |          |          |          |          |          |          | 46       |
| OCT | 20  |          |          | 39       |          |          | 39       |          | 39       |          |          | 39       |          | 39       |          |          |
| NOV | 20  |          |          | 39       |          |          | 39       |          |          |          |          | 39       |          | 39       |          |          |
| DIC | 20  |          |          |          |          |          |          |          |          |          |          |          |          |          | 39       |          |

Table 5. Estimates of the highest risk value for LHD per month

3.4. In January, the highest VR occurred (49) in La Paz FIR (SLLF). In February, the highest VR (51) occurred in the Lima FIR (SPIM). In March, the highest VR (56) occurred in the Panama FIR (MPZL). In April, the highest VR (56) occurred in the Curaçao FIR (TNCF). In May, the highest VR (51) occurred in the Maiquetía FIR (SVZM). In June, the highest VR (51) occurred in the Lima FIR (SPIM). In July, the highest VR (51) occurred in the Comodoro Rivadavia FIR (SAVU). In August, the highest VR (49) occurred in La Paz FIR (SLLF). In September, the highest VR (46) occurred in the Curaçao FIR (TNCF). In October the largest VRs occurred (39) in the FIRs Córdoba (SACU), Bogotá (SKED), La Paz (SLLF), Lima and Comodoro Rivadavia (SAVU). In November, the largest VRs occurred (39) in the Córdoba (SACU), Bogotá (SKED), Lima and Comodoro Rivadavia (SAVU) FIRs. In December, the highest VR (39) occurred in the Panama FIR (MPZL).

3.5. The LHD report 297 presented by the Panama FIR, with failure of the Barranquilla FIR, in March 2019, contributed 2.9% of the risk assessment for this month, with a VR = 56, which is the largest of the sample.

3.6. The LHD report 420 presented by the Curaçao FIR, with failure of the Kingston FIR, in April 2019, contributed 2.5% of the risk assessment for this month, with a VR = 56, which is the largest of the sample.

3.7. The LHD report 239 presented by the Lima FIR, with failure of the La Paz FIR, in February 2019, contributed 2.6% of the risk assessment for this month, with a VR = 51, which is the second largest of the sample.

3.8. The LHD report 494 presented by the Maiquetía FIR, with failure of the Bogotá FIR, in May 2019, contributed 2.5% of the risk assessment for this month, with a VR = 51, which is the second largest of the sample.

3.9. The LHD report 647 that was presented by the Lima FIR, with failure of the La Paz FIR, in June 2019, contributed 2.9% of the risk assessment for this month, with a VR = 51, which is the second largest of the sample.

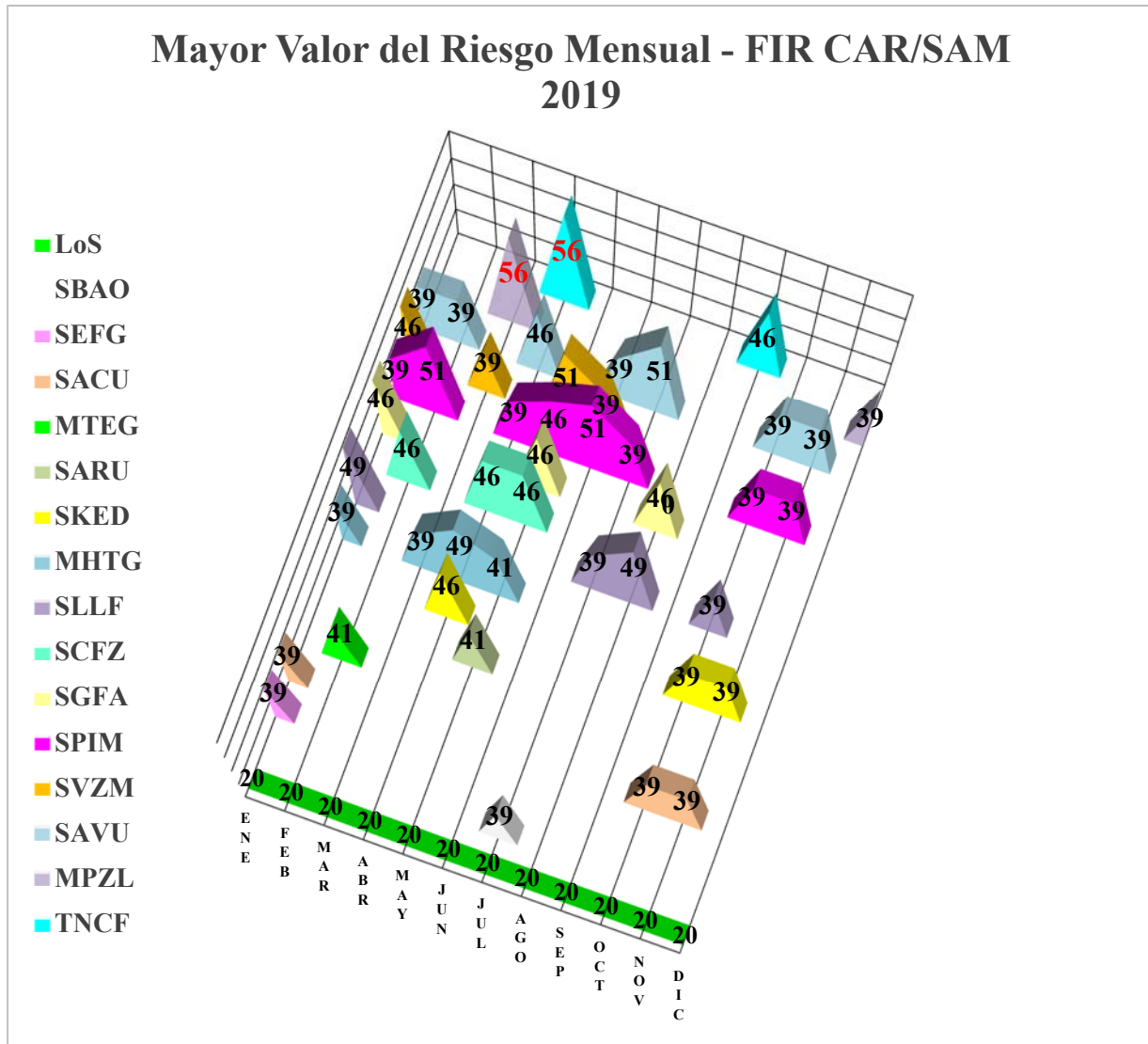
3.10. LHD reports 725, 727,752, and 770, presented by the Comodoro Rivadavia FIR, with failure of the Mount Pleasant APP, in July 2019, contributed 10.8% of the risk assessment for this month, with a VR = 51 for each, which is the second largest of the sample.

3.11. The LHD report 417 presented by the Central American FIR, with failure of the Panama FIR, in April 2019, contributed 2.2% of the risk assessment for this month, with a VR = 49, which is the third largest of the sample.

3.12. The LHD report 116 presented by the La Paz FIR, with failure of the Resistance FIR, in June 2019, contributed 2.8% of the risk assessment for this month, with a VR = 49, which is the third largest of the sample.

3.13. The LHD report 8177 presented by the La Paz FIR, with failure of the Curitiba FIR, in August 2019, contributed 3.3% of the risk assessment for this month, with a VR = 49, which is the third largest of the sample.

3.14. In **Graph 5**, the most important risk values (VR) that occurred in all months are presented based on the LHD reports from 1 January to 31 December 2019.



Graph 5. Higher risk value for the FIRs of the RVSM CARSAM space. The green line is the VR of the LoS (20).

#### 4. The LHD Safety Analysis (SGSO)

4.1. The **Appendix** to this Working Paper shows all LHD reports whose failures or operational errors that have been evaluated in teleconferences or by analysis of CARSAMMA in conjunction with the POCs of the FIRs involved are detailed, as those that had the highest value risk (> 20) produced during the 12 months of 2019.

4.2. **Table 6** shows the FIRs that suffered and generated risks.

| FIR                | Suffers the risk | %           | Generates the risk | %           |
|--------------------|------------------|-------------|--------------------|-------------|
| AMAZONICA          | 56               | 5,5         | 28                 |             |
| ANTOFAGASTA        | 33               |             | 13                 |             |
| ASUNCION           | 14               |             | 13                 |             |
| ATLANTICO          | 7                |             | 1                  |             |
| BARRANQUILLA       | 14               |             | 68                 | 7,0         |
| BOGOTA             | 122              | 12,0        | 242                | 24,8        |
| BRASILIA           | 0                |             | 3                  |             |
| CAYENNE            | 0                |             | 0                  |             |
| CENTRAL AMERICAN   | 18               |             | 28                 |             |
| COMODORO RIVADAVIA | 30               |             | 0                  |             |
| CORDOBA            | 29               |             | 12                 |             |
| CURAZAO            | 52               | 5,1         | 70                 | 7,2         |
| CURITIBA           | 19               |             | 6                  |             |
| EZEIZA             | 1                |             | 38                 | 3,9         |
| GEORGETOWN         | 0                |             | 4                  |             |
| GUAYAQUIL          | 200              | 19,6        | 104                | 10,7        |
| HAVANA             | 4                |             | 6                  |             |
| ISLA DE PASCUA     | 0                |             | 0                  |             |
| KINGSTON           | 26               |             | 16                 |             |
| LA PAZ             | 27               |             | 80                 | 8,2         |
| LIMA               | 127              | 12,4        | 72                 | 7,4         |
| MAIQUETIA          | 54               | 5,3         | 33                 |             |
| MENDOZA            | 1                |             | 6                  |             |
| MONTEVIDEO         | 1                |             | 7                  |             |
| PANAMA             | 17               |             | 58                 | 6,0         |
| PARAMARIBO         | 3                |             | 2                  |             |
| PIARCO             | 5                |             | 6                  |             |
| PORT AU PRINCE     | 17               |             | 32                 |             |
| PUERTO MONTT       | 0                |             | 0                  |             |
| PUNTA ARENAS       | 0                |             | 0                  |             |
| RECIFE             | 0                |             | 2                  |             |
| RESISTENCIA        | 45               | 4,4         | 9                  |             |
| SANTIAGO           | 1                |             | 0                  |             |
| ST. DOMINGO        | 97               | 9,5         | 14                 |             |
| <b>TOTAL</b>       | <b>1.020</b>     | <b>73,8</b> | <b>973</b>         | <b>75,2</b> |

**NOTA 1:** Total de reportes hechos por las FIR CAR 215, hechos por las FIR SAM 805.

**NOTA 2:** En la columna “Sufre el Riesgo”, esas 8 FIR sufren 73,8% de los riesgos de la región.

**NOTA 3:** En la columna “Genera el Riesgo”, esas 8 FIR generan 75,2% de los riesgos de la región.

| ADJACENT FIRs<br>OTHERS (*) (**) | Suffers the risk | Generates the risk |
|----------------------------------|------------------|--------------------|
| ABIDJAN                          | 0                | 2                  |
| DAKAR                            | 0                | 2                  |
| LUANDA                           | 0                | 2                  |
| MERIDA                           | 7                | 1                  |

| <b>ADJACENT FIRs<br/>OTHERS (*) (**)</b> | <b>Suffers the risk</b> | <b>Generates the risk</b> |
|--|-------------------------|---------------------------|
| MIAMI                                    | 0                       | 7                         |
| MOUNT PLEASANT (*)                       | 0                       | 17                        |
| NEW YORK                                 | 4                       | 0                         |
| PILOTO (**)                              | 0                       | 21                        |
| SAN JUAN                                 | 8                       | 14                        |
| <b>TOTAL</b>                             | <b>19</b>               | <b>66</b>                 |

*Table 6. FIRs that suffered and generated risks (LHD) in 2019.*

4.3. The FIRs that suffered the most from adjacent FIR failures are GUAYAQUIL 131 times, LIMA 127 times, BOGOTA 122 times, SANTO DOMINGO 97 times, AMAZONICA 56, MAIQUETIA 54 times, CURAÇAO 52 times, and RESISTENCIA 45 with LHD reporting because neighboring FIRs contributed to the generation of risk in their RVSM airspace.

4.4. The FIRs that most contribute with failures for the adjacent FIRs are: BOGOTÁ 242 times, GUAYAQUIL 104 times, LA PAZ 80 times, LIMA 72 times, CURAZAO 70 times, BARRANQUILLA 68 times, PANAMA 58 times, and EZEIZA 38 times, all of these generated risk for neighboring FIRs.

4.5. Although the EZEIZA FIR only made an LHD report of the adjacent FIRs, it generates 38 contributions to risk in the adjacent FIRs, mainly to the RESISTENCIA FIR, with 21 errors/failures, then with the COMODORO RIVADAVIA FIR, with 12 errors/failures and then with the FIR CÓRDOBA, with five (5) errors/failures.

4.6. Secondly, the MONTEVIDEO FIR, although it only made an LHD report of the adjacent FIRs, it generated seven (7) contributions to risk in the adjacent FIRs, mainly the RESISTENCIA FIR, with 4 four errors/failures and then with the CURITIBA FIR, with three (3) errors/failures.

4.7. In third place, the MENDOZA FIR, although it only made an LHD report of the adjacent FIRs, it generated six (6) contributions to risk in the adjacent FIRs, mainly to the CÓRDOBA FIR, with four (4) errors/failures, then with the ANTOFAGASTA and SANTIAGO FIRs, with one (1) error/failure, with each one.

4.8. In the fourth place, the BARRANQUILLA FIR, although it only made 14 LHD reports of the adjacent FIRs, it generated 68 risk contributions in the adjacent FIRs, mainly to the CURAÇAO FIR, with 37 errors/failures, then with the KINGSTON FIR, with 16 errors/failures, then with the FIR MAIQUETIA, with 13 errors/failures and then with the FIR PANAMÁ, with 2 errors/failures.

4.9. Part of the analysis process includes a detailed review of specific operating errors/failures, to identify the contributing factors and guarantee that the procedures and processes are executed by the CAR/SAM FIR safety authorities to reduce the probability that the same errors are recurring.

4.10. In the case of RVSM airspace, CARSAMMA evaluated the individual operational errors identified by the LHD reports submitted by the 34 FIRs in its geographic coverage area, grouping them by FIR and then by State, using the following statistical tools:

Risk Value **Average**

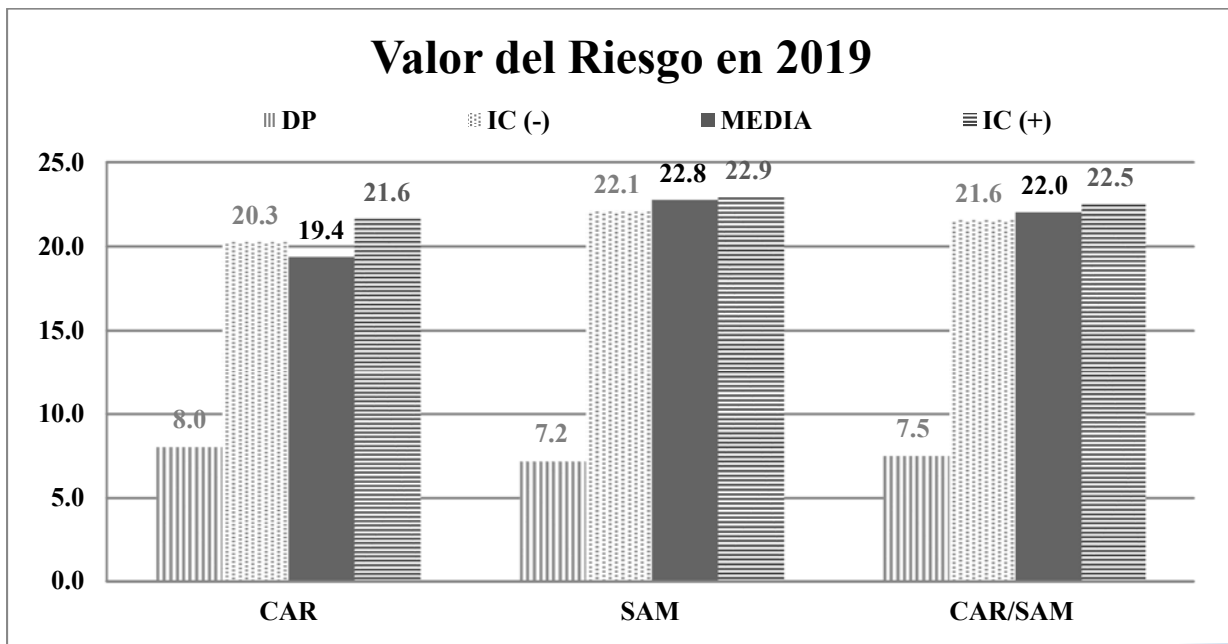
$$\longrightarrow M = \sum VR / n \quad ;$$

**Standard Deviations**

$$\longrightarrow \sigma = \sqrt{\frac{1}{N} \sum_{i=1}^N (x - \bar{x})^2} \quad y$$

95% Confidence interval for the analysis (= 1,96).

4.11. In **Graph 6** all these values are presented, the median value, the standard deviation, and the confidence interval of the risk values assigned to operational errors reported in the large altitude deviations of all the FIRs involved in the analysis of the data of 2019 LHD.



*Graph 6. Median value, standard deviation, and intermediate confidence of the CAR and SAM Regions.*

4.12. In **Graph 7** below, the median values and standard deviations of the results of this analysis are identified with the contribution of risk value assigned to the operational errors of the large altitude deviations by FIR involved in the analysis of the 2019 LHD data. .



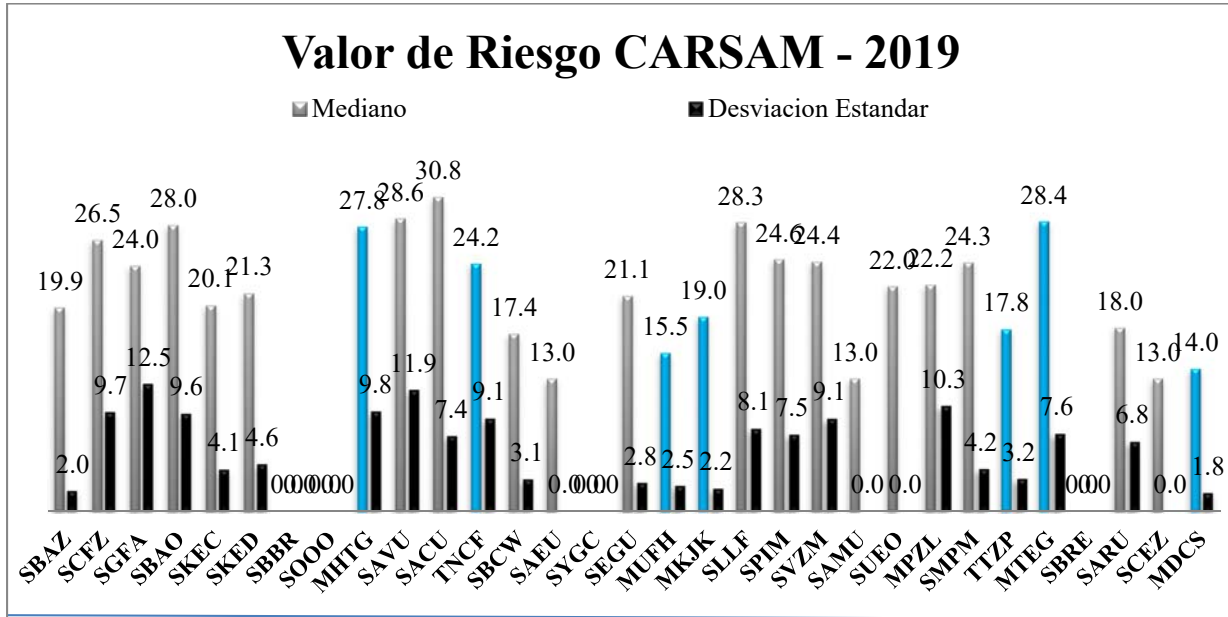


Gráfico 7. Contribución de las medias y desviación estándar por FIR involucrada en el riesgo.

4.13 In **Figure 4** it offers a visual image of the geographical location of the risk points (VR ≥ 41) of the LHD reports with 23 points and 30 reports in the data set of 12 consecutive months in 2019, issued by the CAR/SAM FIRs.. The image is intended to provide a means of identifying specific points of risk related to RVSM operations.



Figure 4. CAR / SAM FIR-RVSM Risk Points of Large Altitude Deviations (LHD)  
January - December 2019

4.14. The black points indicate the TCPs with the highest VR (56), generated by the absence of coordination between the Barranquilla Control Center and the Panama Control Center (# 297). Factors that contributed to this value are lack of coordination, the aircraft enters diverted, other traffic involved and the duration of the event. The other TCP with higher VR was generated by lack of coordination between the Kingston Control Center and the Curaçao Control Center (# 420). Factors that contributed to this value, lack of coordination, the aircraft enters diverted, other traffic involved and the duration of the event.

4.15. We can observe that in 2019 there were some reports with high values, mainly between the Ezeiza FIR and the Comodoro Rivadavia FIR, between the Asunción FIR and the La Paz FIR (whose TCP had already been reported in 2018). In 2019, the La Paz FIR suffered 27 risks and generates 80 risks to the adjacent FIRs. It cannot be ignored that in many pairs of FIRs we have a considerable amount of reports, with high-risk values (shown in **Table 8**). We also observed a growth in reports involving FIRs that previously did not appear in previous years' analysis, which generated VR equal to or above 41. .

4.16. In Table 7, we can observe some points with the number of reports whose VR is equal to or above 39 due to the number of reported events, the maximum VRs, and the FIRs involved .

Observations:

- 1 - In the FIR INVOLVED column, the first FIR of the line was the one that suffered the risk.
- 2 - We have a total of 70 reports with VR equal to or greater than 39 in a universe of 310 reports, in these 49 points.

| POINTS       | QUANTITY OF REPORTS | RISK VALUE (MAX)  | INVOLVED FIRs                       |
|--------------|---------------------|-------------------|-------------------------------------|
| 0700S 01000W | 1 / 2               | 39                | Atlántico X Abidjan                 |
| 1331S 06949W | 1 / 1               | 51                | Lima x La Paz                       |
| 4500S 05000W | 2 / 2               | 39 y 46           | Comodoro Rivadavia x Ezeiza         |
| 4500S 05200W | 5 / 6               | 46 (2x) y 51 (3x) | Comodoro Rivadavia x Ezeiza         |
| 4500S 05200W | 0 / 1               | -                 | Comodoro Rivadavia x Mount Pleasant |
| 4556S 06339W | 1 / 1               | 51                | Comodoro Rivadavia x Mount Pleasant |
| AKPEP        | 1 / 1               | 39                | Maiquetia x Amazónica               |
| ALSAL        | 1 / 1               | 41                | Central América x Mérida            |
| AMBIN        | 1 / 1               | 56                | Curazao x Kingston                  |
| AMBIN        | 0 / 2               | -                 | Kingston x Curazao                  |
| ANGEL        | 1 / 3               | 39                | Bogotá x Guayaquil                  |
| ANGEL        | 0 / 6               | -                 | Guayaquil x Bogotá                  |
| ANRAX        | 1 / 2               | 39                | Bogotá x Guayaquil                  |
| ANRAX        | 0 / 10              | -                 | Guayaquil x Bogotá                  |
| ANREX        | 1 / 3               | 51                | Mérida x Central América            |
| ARNEL        | 0 / 7               | -                 | Guayaquil x Lima                    |
| ARNEL        | 1 / 8               | 39                | Lima x Guayaquil                    |
| BOGAL        | 1 / 1               | 56                | Panamá x Barranquilla               |
| BOKAN        | 0 / 27              | -                 | Guayaquil x Bogotá                  |
| BOKAN        | 1 / 11              | 46                | Bogotá x Guayaquil                  |
| BOLDO        | 0 / 3               | -                 | Central América x Bogotá            |
| BOLDO        | 1 / 1               | 49                | Central América x Panamá            |

| POINTS | QUANTITY OF REPORTS | RISK VALUE (MAX) | INVOLVED FIRs                  |
|--------|---------------------|------------------|--------------------------------|
| BOLET  | 1 / 1               | 49               | La Paz x Resistencia           |
| BUXOR  | 1 / 2               | 46               | Asunción x La Paz              |
| BUXOR  | 0 / 1               | -                | La Paz x Asunción              |
| CUC    | 1 / 6               | 46               | Maiquetia x Bogotá             |
| DAKMO  | 0 / 16              | -                | Bogotá x Panamá                |
| DAKMO  | 1 / 2               | 39               | Panamá x Bogotá                |
| DCR    | 1 / 1               | 41               | Port Au Prince x Santo Domingo |
| DCR    | 0 / 5               | -                | Santo Domingo x Port Au Prince |
| DOBNI  | 1 / 5               | 39               | La Paz x Lima                  |
| DOBNI  | 0 / 10              | -                | Lima x La Paz                  |
| ELAKO  | 0 / 1               | -                | La Paz x Lima                  |
| ELAKO  | 2 / 6               | 39 y 51          | Lima x La Paz                  |
| ESDIN  | 1 / 1               | 46               | Antofagasta x Lima             |
| ESDIN  | 0 / 1               | -                | Lima x Antofagasta             |
| ESKOP  | 1 / 1               | 39               | Córdoba x Mendoza              |
| FISST  | 1 / 1               | 39               | New York x Piarco              |
| GAXOK  | 1 / 1               | 39               | Córdoba x La Paz               |
| GAXOK  | 0 / 1               | -                | La Paz x Córdoba               |
| GESPA  | 1 / 1               | 39               | La Paz x Córdoba               |
| IREMI  | 1 / 12              | 46               | Antofagasta x Lima             |
| IREMI  | 0 / 5               | -                | Lima x Antofagasta             |
| KIKAS  | 0 / 7               | -                | Bogotá x Maiquetia             |
| KIKAS  | 2 / 7               | 46 y 51          | Maiquetia x Bogotá             |
| KIKER  | 1 / 1               | 39               | La Paz X Resistencia           |
| LESIR  | 2 / 3               | 39 (2x)          | Central América x Panamá       |
| MCS    | 0 / 3               | -                | Resistencia x Montevideo       |
| MCS    | 1 / 1               | 41               | Resistencia x Ezeiza           |
| NOTOS  | 1 / 3               | 39               | Mérida x Central América       |
| OPRUS  | 0 / 2               | -                | Bogotá x Maiquetia             |
| OPRUS  | 1 / 6               | 39               | Maiquetia x Bogotá             |
| OROSA  | 0 / 1               | -                | Barranquilla x Curazao         |
| OROSA  | 1 / 15              | 39               | Curazao x Barranquilla         |
| PABOB  | 0 / 1               | -                | Guayaquil x Lima               |
| PABOB  | 4 / 8               | 39 (3x) y 46     | Lima x Guayaquil               |
| PLG    | 0 / 5               | -                | Bogotá x Lima                  |
| PLG    | 4 / 13              | 39 (4x)          | Lima x Bogotá                  |
| POVLA  | 0 / 1               | -                | Amazónica x Maiquetia          |
| POVLA  | 1 / 1               | 39               | Maiquetia x Amazónica          |
| PUBUM  | 6 / 13              | 39 (6x)          | Córdoba x La Paz               |
| PUPON  | 1 / 3               | 39               | Córdoba x La Paz               |
| RAXUN  | 1 / 1               | 39               | Córdoba x La Paz               |
| REMEK  | 2 / 3               | 46 (2x)          | Asunción x La Paz              |
| SIDAK  | 0 / 1               | -                | Asuncion x La Paz              |
| SIDAK  | 1 / 1               | 49               | La Paz x Asunción              |

| POINTS | QUANTITY OF REPORTS | RISK VALUE (MAX) | INVOLVED FIRs         |
|--------|---------------------|------------------|-----------------------|
| SORTA  | 2 / 8               | 46 (2x)          | Antofagasta x Lima    |
| SORTA  | 0 / 2               | -                | Lima x Antofagasta    |
| TASIL  | 1 / 2               | 39               | Atlantico x Dakar     |
| TOSES  | 1 / 5               | 39               | Guayaquil x Lima      |
| TOSES  | 0 / 2               | -                | Lima x Guayaquil      |
| VAGAN  | 0 / 1               | -                | Amazónica x Maiquetia |
| VAGAN  | 1 / 2               | 39               | Maiquetia x Amazónica |
| VODIN  | 1 / 1               | 46               | Curazao x Maiquetia   |
| VUMPI  | 0 / 5               | -                | Amazónica x Maiquetia |
| VUMPI  | 1 / 1               | 39               | Maiquetia x Amazónica |

**Table 7. CAR / SAM FIR-RVSM Risk Points of Large Altitude Deviations (LHD)**

January - December 2019

4.17. In **Table 8** we can see the first 30 pairs of FIRs that presented the most reports. All of them with the total number of reports between them and the total of points/fixed reported. From the previous analysis, it is important to point out the following issues:

1st - That the Mount Pleasant Control (EGYP) in 2019 generated 23 LHD reports at 9 points for the Comodoro Rivadavia FIR, but with a very high VR as shown in paragraph 2.3 and table 5 (SAVU), and

2º - That the San Juan FIR suffers risk due to failures/errors of the Maiquetía (4), Piarco (3) and Curaçao FIRs (1), but it produces risk to the FIRs as in the Santo Domingo FIR (11), FIR Maiquetía (2) and Curaçao (1).

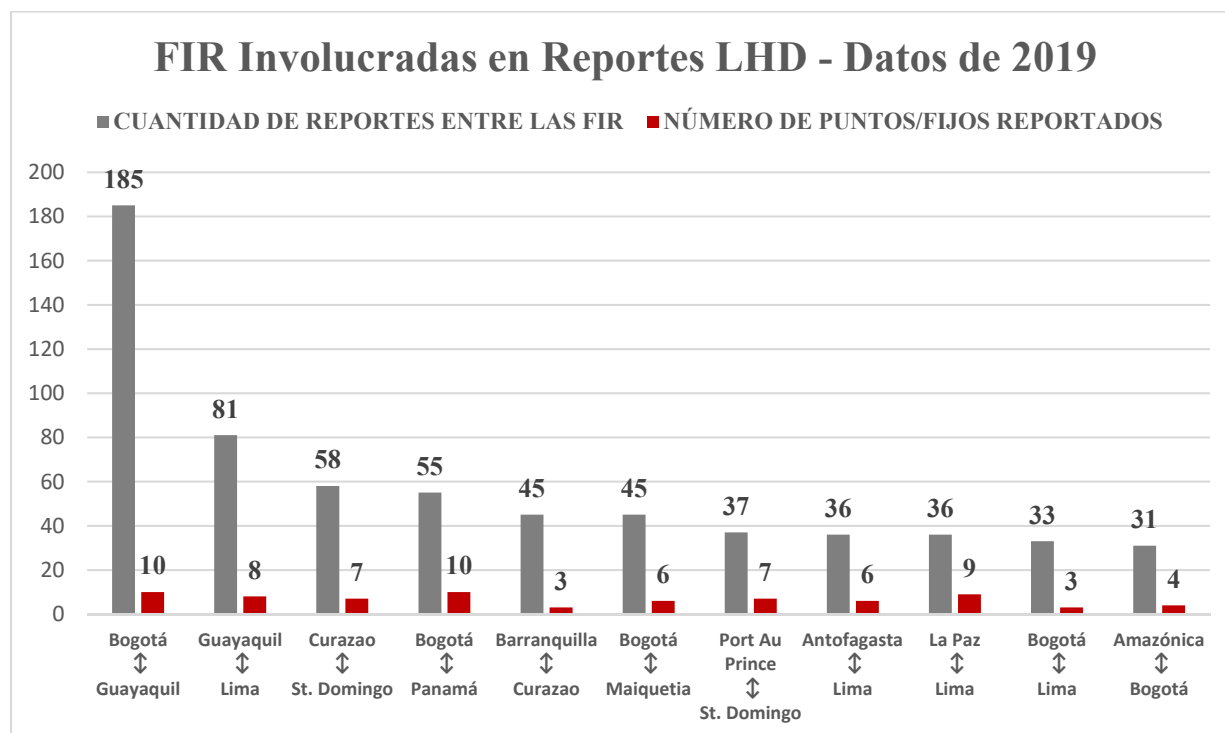
3rd - Recognize the FIRs that reported Pilots failures/errors in previous analysis. (in red in **table 8**).

| INVOLVED FIRs                       | QUANTITY OF REPORTS | QUANTITY OF REPORTED POINTS |
|-------------------------------------|---------------------|-----------------------------|
| Bogotá ↔ Guayaquil                  | 185                 | 10                          |
| Guayaquil ↔ Lima                    | 81                  | 8                           |
| Curazao ↔ St. Domingo               | 58                  | 7                           |
| Bogotá ↔ Panamá                     | 55                  | 10                          |
| Barranquilla ↔ Curazao              | 45                  | 3                           |
| Bogotá ↔ Maiquetia                  | 45                  | 6                           |
| Port Au Prince ↔ St. Domingo        | 37                  | 7                           |
| Antofagasta ↔ Lima                  | 36                  | 6                           |
| La Paz ↔ Lima                       | 36                  | 9                           |
| Bogotá ↔ Lima                       | 33                  | 3                           |
| Amazónica ↔ Bogotá                  | 31                  | 4                           |
| Central América ↔ Guayaquil         | 27                  | 5                           |
| Comodoro Rivadavia → Mount Pleasant | 23                  | 9                           |
| Ezeiza ↔ Resistencia                | 22                  | 4                           |
| Barranquilla ↔ Kingston             | 21                  | 6                           |

| INVOLVED FIRs               | QUANTITY OF REPORTS | QUANTITY OF REPORTED POINTS |
|-----------------------------|---------------------|-----------------------------|
| Amazónica ↔ La Paz          | 21                  | 7                           |
| Córdoba ↔ La Paz            | 19                  | 4                           |
| Asunción ↔ Resistencia      | 18                  | 5                           |
| Asunción ↔ La Paz           | 16                  | 4                           |
| Amazónica ↔ Maiquetía       | 15                  | 6                           |
| Barranquilla ↔ Maiquetía    | 13                  | 3                           |
| St. Domingo ↔ San Juan      | 11                  | 6                           |
| Central América ↔ Panamá    | 10                  | 7                           |
| Kingston ↔ Panamá           | 10                  | 3                           |
| Central América ↔ Mérida    | 7                   | 3                           |
| Comodoro Rivadavia → Ezeiza | 7                   | 4                           |
| Curazao ↔ Kingston          | 7                   | 4                           |
| Antofagasta → Córdoba       | 6                   | 2                           |
| Córdoba ↔ Resistencia       | 6                   | 1                           |
| Curazao ↔ Maiquetia         | 6                   | 4                           |
|                             |                     |                             |
| Cutitiba → Piloto           | 8                   | 8                           |
| Habana → Piloto             | 4                   | 4                           |
| Piarco → Piloto             | 2                   | 2                           |
| Atlantico → Piloto          | 1                   | 1                           |
| Barranquilla → Piloto       | 1                   | 1                           |
| Bogotá → Piloto             | 1                   | 1                           |
| Comodoro Rivadavia → Piloto | 1                   | 1                           |
| Panamá → Piloto             | 1                   | 1                           |
| Port Au Prince → Piloto     | 1                   | 1                           |
| St. Domingo → Piloto        | 1                   | 1                           |

Table 8 - CAR / SAM FIR-Quantity of reports between them and Total Points reported

4.18. **Graph 8** shows the ten pairs of FIRs with the highest number of reports. .



**Gráfico 8. FIR CAR/SAM-Cantidad de reportes entre ellas y Número de puntos reportados**

4.19. **Table 9** shows the twenty pairs of FIRs with the highest number of reports with the respective reported points/fixes.

| INVOLVED FIRs                       | REPORTED POINTS/FIXED   |
|-------------------------------------|---|
| Bogotá ↔ Guayaquil                  | UGUPI – BOKAN – PULTU – ENSOL – ANRAX ANGEL - VAMOS – AKTAB – BOLOM - TCO       |
| Guayaquil ↔ Lima                    | VAKUD – ARNEL – TERAS – PABOB – TOSES – ANPAL – LOBOT MOXOM                     |
| Curazao ↔ St. Domingo               | VESKA – PALAS – BEROX – KARUM POKAK IRGUT - KISAS                               |
| Bogotá ↔ Panamá                     | DAKMO – BUXOS – BUSMO – IVROS – TOKUT – ILTUR – KAKOL – IRASO - OGLUT           |
| Barranquilla ↔ Curazao              | OROSA – AMBAS - SELAN   |
| Bogotá ↔ Maiquetia                  | KIKAS – ENPUT – OPRUS – CUC – PAY - AMAYA                                       |
| Port Au Prince ↔ St. Domingo        | ETBOD – PIGBI – DCR – ONPAD – OSIDU – RETAK – 1858N07153W                       |
| Antofagasta ↔ Lima                  | IREMI – SORTA – ALDAX – ESDIN – ARI - ISPEL                                     |
| La Paz ↔ Lima                       | DOBNI – ELAKO – ORALO – OBLIR – OPTOP – PDO – RAXUN – 1331S06949W – 1521S07053W |
| Bogotá ↔ Lima                       | PLG – ROLUS - ILMUX   |
| Amazónica ↔ Bogotá                  | LET – ABIDE – ASAPA - BRACO   |
| Central América ↔ Guayaquil         | LIXAS – UGADI – OSELO – ARTOM - LOGAL   |
| Comodoro Rivadavia → Mount Pleasant | DIGIS – BOGOR – KABES – MOSKA – VIE 45S052W – 50S056W – 4556S06339W – 50S058W   |
| Ezeiza ↔ Resistencia                | KORTA – TODES – OPNIN - RIOKA   |
| Barranquilla ↔ Kingston             | KILER – OTAMO – BOBKA – KIKER – TOMEK – 1351N07648W                             |

| INVOLVED FIRs          | REPORTED POINTS/FIXED                             |
|------------------------|---|
| Amazónica ↔ La Paz     | KILEV – RCO – ISARA – UBKAB – EROGI – KILUX - SMT |
| Córdoba ↔ La Paz       | PUMUM – PUPON – GAXOK - GESPA                     |
| Asunción ↔ Resistencia | PILCO – KALOM – POS – REPAM - KUBIR               |
| Asunción ↔ La Paz      | MOMDI – BUXOR - REMEK - SIDAK                     |
| Amazónica ↔ Maiquetía  | VUMPI – VAGAN – AKPEP – POVLA – PAKON - UGAGA     |

**Table 9 - CAR / SAM FIR-Names of Points reported among the FIRs**

5. Suggested action

5.1. The meeting is invited to:

- a) analyse the information in this Working Paper;
- b) use the information to carry out airspace safety analysis of the CAR/SAM Regions; and
- c) implement the necessary measures to reduce or eliminate LHDs, including those with code “E” that continue to represent a significant volume of safety events.

-----



APPENDIX  
APENDICE A

| Secuencia de los Reportes | FIR que SUFRE el Riesgo | FIR que GENERA el Riesgo | FECHA del Evento | POSICIÓN donde ocurrió el Riesgo | DURACIÓN del evento | Codigo LHD | VALOR del RIESGO |
|---------------------------|-------------------------|--------------------------|------------------|----------------------------------|---------------------|------------|------------------|
| 1                         | CENTRAL AMERICA         | PANAMA                   | 01/01/19         | FALLA                            | 60                  | E1         | 18               |
| 2                         | BOGOTA                  | LIMA                     | 01/01/19         | PLG                              | 60                  | E1         | 18               |
| 3                         | CENTRAL AMERICA         | KINGSTON                 | 01/01/19         | MAMBI                            | 60                  | E2         | 22               |
| 4                         | LIMA                    | GUAYAQUIL                | 01/01/19         | PABOB                            | 90                  | E2         | 39               |
| 5                         | AMAZONICA               | LA PAZ                   | 02/01/19         | VILUX                            | 60                  | E1         | 18               |
| 7                         | COMODORO RIVADAVIA      | MOUNT PLEASANT           | 03/01/19         | 4500S 05200W                     | 60                  | E2         | 22               |
| 8                         | BOGOTA                  | LIMA                     | 03/01/19         | PLG                              | 90                  | E1         | 31               |
| 11                        | LIMA                    | BOGOTA                   | 03/01/19         | PLG                              | 90                  | E1         | 31               |
| 12                        | CURAZAO                 | ST. DOMINGO              | 03/01/19         | PALAS                            | 90                  | E1         | 26               |
| 13                        | CURAZAO                 | BARRANQUILLA             | 03/01/19         | AMBAS                            | 60                  | E1         | 13               |
| 14                        | ST. DOMINGO             | CURAZAO                  | 04/01/19         | BEROX                            | 60                  | E1         | 13               |
| 16                        | ANTOFAGASTA             | LIMA                     | 04/01/19         | IREMI                            | 60                  | E1         | 18               |
| 17                        | ST. DOMINGO             | PORT AU PRINCE           | 04/01/19         | ETBOD                            | 60                  | E1         | 13               |
| 18                        | BOGOTA                  | MAIQUETIA                | 05/01/19         | KIKAS                            | 60                  | E2         | 22               |
| 19                        | COMODORO RIVADAVIA      | MOUNT PLEASANT           | 05/01/19         | DIGIS                            | 60                  | E2         | 22               |
| 20                        | NEW YORK                | PIARCO                   | 05/01/19         | DRDGE                            | 60                  | E1         | 13               |
| 21                        | RESISTENCIA             | EZEIZA                   | 06/01/19         | KORTA                            | 0                   | E2         | 17               |
| 22                        | BOGOTA                  | GUAYAQUIL                | 06/01/19         | PULTU                            | 60                  | E1         | 18               |
| 23                        | LA PAZ                  | ASUNCION                 | 06/01/19         | BUXOR                            | 90                  | E2         | 34               |
| 25                        | CENTRAL AMERICA         | PANAMA                   | 06/01/19         | LESIR                            | 90                  | E2         | 39               |
| 26                        | BOGOTA                  | PANAMA                   | 06/01/19         | BUXOS                            | 60                  | E1         | 18               |
| 27                        | GUAYAQUIL               | LIMA                     | 07/01/19         | LOBOT                            | 0                   | E2         | 22               |
| 29                        | MAIQUETIA               | BARRANQUILLA             | 07/01/19         | SIDOS                            | 60                  | E1         | 18               |
| 30                        | MAIQUETIA               | BARRANQUILLA             | 07/01/19         | SIDOS                            | 60                  | E1         | 18               |
| 31                        | CURAZAO                 | BARRANQUILLA             | 07/01/19         | SELAN                            | 90                  | E1         | 21               |
| 32                        | MAIQUETIA               | BOGOTA                   | 07/01/19         | CUC                              | 60                  | E1         | 13               |
| 33                        | CURITIBA                | PILOTO                   | 07/01/19         | ILTAM                            | 60                  | I          | 14               |
| 35                        | LIMA                    | BOGOTA                   | 08/01/19         | PLG                              | 90                  | E1         | 31               |
| 37                        | LA PAZ                  | LIMA                     | 09/01/19         | DOBNI                            | 60                  | E1         | 23               |
| 38                        | MAIQUETIA               | BARRANQUILLA             | 09/01/19         | SIDOS                            | 60                  | E2         | 17               |
| 39                        | CURAZAO                 | BARRANQUILLA             | 09/01/19         | OROSA                            | 90                  | E1         | 26               |
| 40                        | PORT AU PRINCE          | CURAZAO                  | 09/01/19         | LENOM                            | 90                  | E1         | 26               |
| 41                        | CORDOBA                 | MENDOZA                  | 10/01/19         | ESKOP                            | 90                  | E2         | 39               |
| 43                        | GUAYAQUIL               | LIMA                     | 10/01/19         | TOSES                            | 60                  | E2         | 22               |
| 44                        | BOGOTA                  | PANAMA                   | 10/01/19         | DAKMO                            | 60                  | E2         | 22               |
| 45                        | CENTRAL AMERICA         | BOGOTA                   | 11/01/19         | BOLDO                            | 90                  | E1         | 31               |
| 46                        | BOGOTA                  | PANAMA                   | 11/01/19         | ILTUR                            | 60                  | E2         | 22               |
| 47                        | COMODORO RIVADAVIA      | MOUNT PLEASANT           | 11/01/19         | 5000S 05600W                     | 60                  | E2         | 22               |
| 48                        | LIMA                    | GUAYAQUIL                | 12/01/19         | VAKUD                            | 60                  | E2         | 22               |
| 50                        | GUAYAQUIL               | LIMA                     | 12/01/19         | ARNEL                            | 60                  | E2         | 22               |
| 51                        | GUAYAQUIL               | CENTRAL AMERICA          | 12/01/19         | ARTOM                            | 60                  | E2         | 22               |
| 52                        | LIMA                    | BOGOTA                   | 12/01/19         | PLG                              | 90                  | E1         | 31               |
| 53                        | CORDOBA                 | LA PAZ                   | 12/01/19         | PUBUM                            | 90                  | E1         | 31               |
| 54                        | LIMA                    | BOGOTA                   | 12/01/19         | PLG                              | 90                  | E1         | 31               |
| 55                        | CURITIBA                | MONTEVIDEO               | 13/01/19         | SEKLO                            | 0                   | E1         | 18               |
| 56                        | PIARCO                  | MAIQUETIA                | 13/01/19         | MEGIR                            | 60                  | E2         | 22               |
| 57                        | LIMA                    | BOGOTA                   | 13/01/19         | PLG                              | 90                  | E1         | 31               |
| 59                        | CURAZAO                 | BARRANQUILLA             | 14/01/19         | AMBAS                            | 60                  | E2         | 17               |
| 60                        | CURAZAO                 | BARRANQUILLA             | 14/01/19         | OROSA                            | 90                  | E2         | 34               |
| 61                        | LIMA                    | BOGOTA                   | 14/01/19         | PLG                              | 90                  | E1         | 31               |
| 62                        | AMAZONICA               | MAIQUETIA                | 15/01/19         | VUMPI                            | 60                  | E2         | 22               |
| 63                        | CORDOBA                 | LA PAZ                   | 16/01/19         | PUBUM                            | 90                  | E1         | 31               |
| 65                        | MAIQUETIA               | BOGOTA                   | 16/01/19         | PAY                              | 60                  | E2         | 17               |
| 66                        | BOGOTA                  | GUAYAQUIL                | 17/01/19         | UGUPI                            | 60                  | E2         | 25               |
| 67                        | BOGOTA                  | AMAZONICA                | 18/01/19         | LET                              | 90                  | E1         | 31               |
| 68                        | BOGOTA                  | AMAZONICA                | 18/01/19         | ARUXA                            | 90                  | E1         | 31               |
| 69                        | COMODORO RIVADAVIA      | MOUNT PLEASANT           | 18/01/19         | 5000S 05800W                     | 60                  | E2         | 22               |
| 70                        | GUAYAQUIL               | BOGOTA                   | 18/01/19         | BOKAN                            | 60                  | E2         | 22               |
| 71                        | MAIQUETIA               | SAN JUAN                 | 18/01/19         | MILOK                            | 480                 | E1         | 34               |
| 72                        | CURITIBA                | MONTEVIDEO               | 18/01/19         | UBLAM                            | 60                  | E2         | 22               |
| 73                        | BOGOTA                  | PANAMA                   | 19/01/19         | BUSMO                            | 60                  | E2         | 22               |
| 74                        | LIMA                    | BOGOTA                   | 19/01/19         | PLG                              | 90                  | E2         | 39               |

|     |                    |                 |          |              |     |    |    |
|-----|--------------------|-----------------|----------|--------------|-----|----|----|
| 75  | COMODORO RIVADAVIA | MOUNT PLEASANT  | 19/01/19 | DIGIS        | 60  | E2 | 22 |
| 76  | ASUNCION           | LA PAZ          | 20/01/19 | REMEK        | 480 | E2 | 46 |
| 78  | GUAYAQUIL          | CENTRAL AMERICA | 20/01/19 | OSELO        | 60  | E2 | 22 |
| 79  | BOGOTA             | GUAYAQUIL       | 20/01/19 | PULTU        | 90  | E1 | 31 |
| 80  | LIMA               | BOGOTA          | 20/01/19 | PLG          | 90  | E2 | 39 |
| 81  | RESISTENCIA        | CORDOBA         | 20/01/19 | SIKOB        | 0   | E2 | 17 |
| 82  | CURAZAO            | BARRANQUILLA    | 21/01/19 | SELAN        | 90  | E1 | 31 |
| 83  | RESISTENCIA        | CURITIBA        | 21/01/19 | KIMIK        | 0   | E2 | 17 |
| 84  | GUAYAQUIL          | BOGOTA          | 21/01/19 | BOKAN        | 60  | E1 | 18 |
| 85  | MAIQUETIA          | AMAZONICA       | 21/01/19 | POVLA        | 180 | E1 | 39 |
| 86  | MAIQUETIA          | AMAZONICA       | 21/01/19 | VUMPI        | 180 | E1 | 39 |
| 87  | LIMA               | GUAYAQUIL       | 21/01/19 | TERAS        | 60  | E2 | 22 |
| 88  | LIMA               | AMAZONICA       | 21/01/19 | LIMPO        | 60  | E1 | 18 |
| 89  | ANTOFAGASTA        | LIMA            | 21/01/19 | SORTA        | 60  | E1 | 18 |
| 90  | KINGSTON           | BARRANQUILLA    | 22/01/19 | KILER        | 60  | E1 | 18 |
| 91  | CURAZAO            | BARRANQUILLA    | 22/01/19 | OROSA        | 90  | E1 | 26 |
| 92  | LIMA               | BOGOTA          | 22/01/19 | PLG          | 90  | E1 | 31 |
| 93  | GUAYAQUIL          | BOGOTA          | 23/01/19 | PULTU        | 60  | E2 | 22 |
| 98  | ST. DOMINGO        | CURAZAO         | 23/01/19 | KARUM        | 60  | E1 | 13 |
| 99  | CURITIBA           | AMAZONICA       | 24/01/19 | TOSAR        | 60  | E1 | 18 |
| 100 | BOGOTA             | GUAYAQUIL       | 24/01/19 | UGUPI        | 60  | E1 | 20 |
| 101 | BOGOTA             | GUAYAQUIL       | 24/01/19 | PULTU        | 60  | E2 | 22 |
| 102 | BOGOTA             | GUAYAQUIL       | 24/01/19 | BOKAN        | 60  | E2 | 22 |
| 103 | BOGOTA             | GUAYAQUIL       | 24/01/19 | BOKAN        | 60  | E2 | 22 |
| 104 | CURITIBA           | ASUNCION        | 24/01/19 | FOZ          | 0   | E1 | 18 |
| 106 | GUAYAQUIL          | LIMA            | 24/01/19 | VAKUD        | 0   | E2 | 22 |
| 108 | MAIQUETIA          | BOGOTA          | 25/01/19 | CUC          | 180 | E2 | 46 |
| 109 | COMODORO RIVADAVIA | MOUNT PLEASANT  | 25/01/19 | 5000S 05600W | 60  | E2 | 22 |
| 110 | RESISTENCIA        | LA PAZ          | 25/01/19 | PILCO        | 90  | E1 | 26 |
| 111 | ANTOFAGASTA        | LIMA            | 25/01/19 | SORTA        | 200 | E1 | 34 |
| 113 | BOGOTA             | MAIQUETIA       | 26/01/19 | ENPUT        | 60  | E2 | 22 |
| 114 | ANTOFAGASTA        | LIMA            | 26/01/19 | SORTA        | 600 | E1 | 34 |
| 116 | LA PAZ             | RESISTENCIA     | 26/01/19 | BOLET        | 720 | E1 | 49 |
| 117 | BOGOTA             | MAIQUETIA       | 26/01/19 | KIKAS        | 60  | E2 | 22 |
| 118 | ST. DOMINGO        | CURAZAO         | 26/01/19 | VESKA        | 60  | E1 | 13 |
| 119 | ST. DOMINGO        | CURAZAO         | 27/01/19 | VESKA        | 60  | E1 | 13 |
| 120 | MAIQUETIA          | BOGOTA          | 27/01/19 | KIKAS        | 180 | E2 | 46 |
| 121 | GUAYAQUIL          | CENTRAL AMERICA | 28/01/19 | UGADI        | 60  | E1 | 18 |
| 122 | GUAYAQUIL          | BOGOTA          | 28/01/19 | BOKAN        | 60  | E2 | 22 |
| 123 | GUAYAQUIL          | BOGOTA          | 28/01/19 | UGUPI        | 60  | E2 | 25 |
| 124 | CENTRAL AMERICA    | BOGOTA          | 28/01/19 | BOLDO        | 90  | E1 | 31 |
| 125 | RESISTENCIA        | CURITIBA        | 28/01/19 | ARULA        | 0   | E1 | 13 |
| 126 | CURAZAO            | BARRANQUILLA    | 28/01/19 | OROSA        | 120 | E1 | 26 |
| 127 | LIMA               | LA PAZ          | 28/01/19 | OPTOP        | 60  | E2 | 22 |
| 128 | PANAMA             | KINGSTON        | 28/01/19 | ARNAL        | 60  | E1 | 18 |
| 129 | LIMA               | BOGOTA          | 29/01/19 | ROLUS        | 60  | E1 | 18 |
| 130 | CORDOBA            | EZEIZA          | 29/01/19 | GAVAM        | 0   | E1 | 18 |
| 131 | CORDOBA            | EZEIZA          | 29/01/19 | GAVAM        | 0   | E1 | 18 |
| 133 | GUAYAQUIL          | LIMA            | 29/01/19 | TOSES        | 90  | E2 | 39 |
| 134 | RESISTENCIA        | CORDOBA         | 29/01/19 | SIKOB        | 0   | E1 | 13 |
| 135 | KINGSTON           | PANAMA          | 29/01/19 | ARNAL        | 60  | E1 | 18 |
| 136 | LIMA               | BOGOTA          | 30/01/19 | PLG          | 90  | E2 | 39 |
| 137 | BOGOTA             | PANAMA          | 30/01/19 | IRASO        | 90  | E1 | 31 |
| 138 | ST. DOMINGO        | PILOTO          | 30/01/19 | POKEG        | 60  | B  | 13 |
| 139 | BOGOTA             | MAIQUETIA       | 30/01/19 | KIKAS        | 60  | E1 | 18 |
| 140 | ST. DOMINGO        | PORT AU PRINCE  | 31/01/19 | ETBOD        | 60  | E1 | 13 |
| 141 | ANTOFAGASTA        | LIMA            | 31/01/19 | SORTA        | 300 | E1 | 34 |
| 143 | BOGOTA             | GUAYAQUIL       | 31/01/19 | UGUPI        | 60  | E2 | 25 |
| 144 | BOGOTA             | PANAMA          | 31/01/19 | BUXOS        | 60  | E1 | 18 |
| 145 | BOGOTA             | PANAMA          | 31/01/19 | DAKMO        | 60  | E1 | 18 |
| 146 | ST. DOMINGO        | CURAZAO         | 01/02/19 | IRGUT        | 60  | E1 | 13 |
| 147 | BOGOTA             | GUAYAQUIL       | 01/02/19 | UGUPI        | 60  | E2 | 25 |
| 149 | KINGSTON           | BARRANQUILLA    | 01/02/19 | OTAMO        | 60  | E1 | 18 |
| 150 | KINGSTON           | BARRANQUILLA    | 01/02/19 | KILER        | 60  | E1 | 18 |
| 151 | KINGSTON           | BARRANQUILLA    | 01/02/19 | OTAMO        | 60  | E1 | 18 |
| 152 | ST. DOMINGO        | MIAMI           | 01/02/19 | ASIVO        | 60  | E1 | 13 |
| 153 | ST. DOMINGO        | SAN JUAN        | 01/02/19 | KATOK        | 60  | E2 | 17 |

|     |                    |                 |          |              |       |    |    |
|-----|--------------------|-----------------|----------|--------------|-------|----|----|
| 154 | MERIDA             | CENTRAL AMERICA | 02/02/19 | NOTOS        | 90    | E1 | 31 |
| 155 | LIMA               | GUAYAQUIL       | 02/02/19 | VAKUD        | 60    | E1 | 18 |
| 156 | ST. DOMINGO        | PORT AU PRINCE  | 02/02/19 | DCR          | 60    | E1 | 13 |
| 157 | ANTOFAGASTA        | MENDOZA         | 03/02/19 | MIBAS        | 0     | E2 | 17 |
| 158 | CURAZAO            | BARRANQUILLA    | 03/02/19 | OROSA        | 90    | E2 | 34 |
| 159 | LIMA               | BOGOTA          | 04/02/19 | PLG          | 0     | E2 | 27 |
| 160 | KINGSTON           | BARRANQUILLA    | 04/02/19 | KILER        | 60    | E1 | 18 |
| 161 | CURAZAO            | BARRANQUILLA    | 05/02/19 | SELAN        | 90    | E1 | 26 |
| 162 | ST. DOMINGO        | CURAZAO         | 06/02/19 | PALAS        | 60    | E1 | 13 |
| 163 | CURITIBA           | BRASILIA        | 06/02/19 | SAT          | 60    | E1 | 18 |
| 164 | GUAYAQUIL          | BOGOTA          | 06/02/19 | BOKAN        | 60    | E1 | 18 |
| 165 | MERIDA             | CENTRAL AMERICA | 06/02/19 | NOTOS        | 90    | E1 | 31 |
| 168 | ANTOFAGASTA        | LIMA            | 06/02/19 | IREMI        | 120   | E1 | 26 |
| 169 | COMODORO RIVADAVIA | MOUNT PLEASANT  | 07/02/19 | MOSKA        | 60    | E2 | 22 |
| 170 | RESISTENCIA        | CORDOBA         | 07/02/19 | SIKOB        | 60    | E1 | 13 |
| 171 | LIMA               | GUAYAQUIL       | 08/02/19 | ARNEL        | 60    | E2 | 22 |
| 172 | BARRANQUILLA       | KINGSTON        | 08/02/19 | KILER        | 60    | E2 | 22 |
| 173 | LIMA               | GUAYAQUIL       | 08/02/19 | PABOB        | 90    | E2 | 39 |
| 174 | LIMA               | GUAYAQUIL       | 09/02/19 | VAKUD        | 60    | E2 | 22 |
| 176 | PORT AU PRINCE     | ST. DOMINGO     | 09/02/19 | DCR          | 90    | E1 | 41 |
| 177 | COMODORO RIVADAVIA | MOUNT PLEASANT  | 09/02/19 | DIGIS        | 60    | E2 | 22 |
| 178 | CURAZAO            | ST. DOMINGO     | 09/02/19 | PALAS        | 90    | E1 | 26 |
| 179 | MERIDA             | CENTRAL AMERICA | 10/02/19 | ANREX        | 60    | E1 | 23 |
| 180 | BOGOTA             | GUAYAQUIL       | 11/02/19 | BOKAN        | 60    | E2 | 22 |
| 181 | BOGOTA             | PANAMA          | 11/02/19 | KAKOL        | 60    | E2 | 22 |
| 182 | CORDOBA            | LA PAZ          | 12/02/19 | PUBUM        | 90    | E1 | 31 |
| 183 | MAIQUETIA          | BARRANQUILLA    | 12/02/19 | SIDOS        | 60    | E2 | 22 |
| 184 | MAIQUETIA          | BOGOTA          | 12/02/19 | SIDOS        | 60    | E2 | 17 |
| 185 | GUAYAQUIL          | CENTRAL AMERICA | 12/02/19 | LIXAS        | 60    | E1 | 18 |
| 187 | PORT AU PRINCE     | ST. DOMINGO     | 13/02/19 | ETBOD        | 90    | E1 | 31 |
| 189 | RESISTENCIA        | EZEIZA          | 13/02/19 | KORTA        | 0     | E2 | 17 |
| 190 | ST. DOMINGO        | CURAZAO         | 14/02/19 | VESKA        | 60    | E1 | 13 |
| 191 | GUAYAQUIL          | BOGOTA          | 14/02/19 | PULTU        | 60    | E2 | 22 |
| 192 | BARRANQUILLA       | KINGSTON        | 14/02/19 | KILER        | 60    | E2 | 22 |
| 194 | GUAYAQUIL          | LIMA            | 15/02/19 | PABOB        | 60    | E2 | 22 |
| 195 | GUAYAQUIL          | LIMA            | 15/02/19 | VAKUD        | 60    | E2 | 22 |
| 197 | MAIQUETIA          | BARRANQUILLA    | 15/02/19 | OPRUS        | 60    | E2 | 17 |
| 198 | BARRANQUILLA       | CURAZAO         | 15/02/19 | AMBAS        | 60    | E1 | 18 |
| 199 | ANTOFAGASTA        | LIMA            | 15/02/19 | ALDAX        | 90    | E1 | 21 |
| 201 | BARRANQUILLA       | CURAZAO         | 15/02/19 | OROSA        | 60    | E1 | 18 |
| 202 | CURAZAO            | BARRANQUILLA    | 15/02/19 | LIDOL        | 90    | E1 | 36 |
| 203 | PANAMA             | KINGSTON        | 15/02/19 | ARNAL        | 60    | E1 | 18 |
| 204 | ST. DOMINGO        | PORT AU PRINCE  | 16/02/19 | ETBOD        | 60    | E1 | 13 |
| 205 | ANTOFAGASTA        | LIMA            | 16/02/19 | IREMI        | 180   | E1 | 34 |
| 207 | BARRANQUILLA       | CURAZAO         | 16/02/19 | AMBAS        | 60    | E1 | 18 |
| 208 | PORT AU PRINCE     | ST. DOMINGO     | 16/02/19 | RETAK        | 90    | E2 | 34 |
| 209 | COMODORO RIVADAVIA | MOUNT PLEASANT  | 16/02/19 | DIGIS        | 60    | E2 | 22 |
| 210 | CURAZAO            | ST. DOMINGO     | 16/02/19 | PALAS        | 600   | E1 | 34 |
| 212 | CURAZAO            | ST. DOMINGO     | 16/02/19 | PALAS        | 120   | E1 | 26 |
| 213 | RESISTENCIA        | EZEIZA          | 16/02/19 | KORTA        | 0     | E2 | 17 |
| 214 | GUAYAQUIL          | LIMA            | 17/02/19 | VAKUD        | 60    | E1 | 18 |
| 216 | SAN JUAN           | MAIQUETIA       | 17/02/19 | MILOK        | 60    | E2 | 17 |
| 217 | AMAZONICA          | MAIQUETIA       | 18/02/19 | VAGAN        | 60    | E1 | 18 |
| 218 | AMAZONICA          | MAIQUETIA       | 18/02/19 | VUMPI        | 60    | E1 | 18 |
| 219 | CURAZAO            | BARRANQUILLA    | 18/02/19 | OROSA        | 60    | E2 | 27 |
| 220 | LA PAZ             | LIMA            | 18/02/19 | DOBNI        | 60    | E2 | 27 |
| 222 | COMODORO RIVADAVIA | PILOTO          | 18/02/19 | 4800S 05200W | 1.800 | M  | 16 |
| 224 | PORT AU PRINCE     | ST. DOMINGO     | 18/02/19 | PIGBI        | 90    | E2 | 34 |
| 225 | KINGSTON           | BARRANQUILLA    | 18/02/19 | OTAMO        | 60    | E1 | 18 |
| 226 | LIMA               | LA PAZ          | 19/02/19 | DOBNI        | 90    | E1 | 31 |
| 227 | CURITIBA           | PILOTO          | 19/02/19 | ESAVA        | 300   | A  | 19 |
| 228 | PANAMA             | KINGSTON        | 20/02/19 | KASOR        | 60    | E1 | 18 |
| 229 | LIMA               | GUAYAQUIL       | 21/02/19 | VAKUD        | 60    | E2 | 22 |
| 230 | GUAYAQUIL          | BOGOTA          | 21/02/19 | BOKAN        | 60    | E1 | 18 |
| 231 | BOGOTA             | PANAMA          | 21/02/19 | BUSMO        | 60    | E1 | 18 |
| 233 | BOGOTA             | PANAMA          | 22/02/19 | TOKUT        | 60    | E1 | 18 |
| 234 | BOGOTA             | PANAMA          | 22/02/19 | BUXOS        | 60    | E1 | 18 |

|     |                    |                 |          |              |     |    |    |
|-----|--------------------|-----------------|----------|--------------|-----|----|----|
| 235 | GUAYAQUIL          | LIMA            | 22/02/19 | ARNEL        | 90  | E1 | 26 |
| 236 | CURAZAO            | BARRANQUILLA    | 22/02/19 | OROSA        | 90  | E1 | 26 |
| 237 | CURAZAO            | BARRANQUILLA    | 22/02/19 | OROSA        | 90  | E2 | 34 |
| 238 | ST. DOMINGO        | PORT AU PRINCE  | 22/02/19 | PIGBI        | 60  | E1 | 13 |
| 239 | LIMA               | LA PAZ          | 24/02/19 | 1331S 06949W | 840 | E2 | 51 |
| 240 | GUAYAQUIL          | BOGOTA          | 24/02/19 | PULTU        | 60  | E1 | 18 |
| 241 | BOGOTA             | LIMA            | 26/02/19 | PLG          | 60  | E1 | 18 |
| 243 | LIMA               | GUAYAQUIL       | 27/02/19 | TERAS        | 60  | E2 | 22 |
| 244 | GUAYAQUIL          | LIMA            | 27/02/19 | VAKUD        | 60  | E1 | 18 |
| 246 | COMODORO RIVADAVIA | MOUNT PLEASANT  | 27/02/19 | VIE          | 60  | E2 | 22 |
| 248 | LIMA               | ANTOFAGASTA     | 27/02/19 | IREMI        | 0   | E1 | 18 |
| 249 | MONTEVIDEO         | CURITIBA        | 28/02/19 | SEKLO        | 60  | E2 | 22 |
| 250 | MAIQUETIA          | BOGOTA          | 28/02/19 | KIKAS        | 60  | E1 | 13 |
| 252 | LIMA               | ANTOFAGASTA     | 28/02/19 | SORTA        | 60  | E1 | 18 |
| 254 | ANTOFAGASTA        | LIMA            | 28/02/19 | ESDIN        | 600 | E2 | 46 |
| 255 | AMAZONICA          | BOGOTA          | 01/03/19 | ABIDE        | 60  | E2 | 22 |
| 256 | MAIQUETIA          | BOGOTA          | 01/03/19 | ENPUT        | 30  | E2 | 22 |
| 257 | KINGSTON           | BARRANQUILLA    | 01/03/19 | KILER        | 60  | E2 | 22 |
| 258 | NEW YORK           | MIAMI           | 01/03/19 | SUMRS        | 60  | E1 | 13 |
| 259 | ANTOFAGASTA        | LIMA            | 02/03/19 | IREMI        | 60  | E1 | 18 |
| 261 | LIMA               | GUAYAQUIL       | 03/03/19 | LOBOT        | 60  | E2 | 22 |
| 263 | LIMA               | ANTOFAGASTA     | 03/03/19 | IREMI        | 60  | E1 | 18 |
| 265 | CENTRAL AMERICA    | GUAYAQUIL       | 03/03/19 | LIXAS        | 60  | E1 | 23 |
| 266 | BOGOTA             | MAIQUETIA       | 03/03/19 | KIKAS        | 60  | E2 | 22 |
| 267 | LIMA               | GUAYAQUIL       | 04/03/19 | ARNEL        | 60  | E2 | 22 |
| 269 | LA PAZ             | AMAZONICA       | 04/03/19 | UBKAB        | 60  | E2 | 27 |
| 270 | LIMA               | BOGOTA          | 04/03/19 | PLG          | 90  | E1 | 31 |
| 271 | ANTOFAGASTA        | LIMA            | 05/03/19 | ALDAX        | 180 | E1 | 29 |
| 274 | GUAYAQUIL          | CENTRAL AMERICA | 05/03/19 | LIXAS        | 60  | E1 | 18 |
| 276 | GUAYAQUIL          | BOGOTA          | 05/03/19 | PULTU        | 60  | E1 | 18 |
| 277 | GUAYAQUIL          | LIMA            | 05/03/19 | VAKUD        | 60  | E2 | 22 |
| 280 | LIMA               | ANTOFAGASTA     | 06/03/19 | IREMI        | 60  | E1 | 18 |
| 281 | BOGOTA             | PANAMA          | 06/03/19 | DAKMO        | 60  | E2 | 22 |
| 282 | MAIQUETIA          | BARRANQUILLA    | 07/03/19 | SIDOS        | 30  | E2 | 22 |
| 283 | COMODORO RIVADAVIA | EZEIZA          | 07/03/19 | 4400S 05100W | 60  | E2 | 22 |
| 284 | ST. DOMINGO        | CURAZAO         | 07/03/19 | POKAK        | 60  | E1 | 13 |
| 285 | LIMA               | ANTOFAGASTA     | 07/03/19 | IREMI        | 0   | E2 | 22 |
| 287 | LA PAZ             | CURITIBA        | 08/03/19 | CUB          | 60  | E1 | 23 |
| 288 | LA PAZ             | LIMA            | 08/03/19 | ORALO        | 60  | E1 | 18 |
| 289 | BOGOTA             | PANAMA          | 09/03/19 | DAKMO        | 60  | E2 | 22 |
| 290 | GUAYAQUIL          | BOGOTA          | 09/03/19 | ENSOL        | 60  | E1 | 18 |
| 291 | LIMA               | GUAYAQUIL       | 09/03/19 | VAKUD        | 60  | E1 | 18 |
| 292 | RESISTENCIA        | EZEIZA          | 09/03/19 | KORTA        | 60  | E1 | 13 |
| 293 | GUAYAQUIL          | BOGOTA          | 10/03/19 | UGUPI        | 60  | E1 | 20 |
| 294 | CURAZAO            | BARRANQUILLA    | 10/03/19 | OROSA        | 90  | E1 | 31 |
| 295 | GUAYAQUIL          | BOGOTA          | 10/03/19 | BOKAN        | 60  | E2 | 22 |
| 296 | BOGOTA             | GUAYAQUIL       | 11/03/19 | UGUPI        | 60  | E1 | 20 |
| 297 | PANAMA             | BARRANQUILLA    | 11/03/19 | BOGAL        | 240 | E2 | 56 |
| 298 | COMODORO RIVADAVIA | EZEIZA          | 11/03/19 | 4800S 05200W | 60  | E2 | 22 |
| 299 | ST. DOMINGO        | CURAZAO         | 12/03/19 | KISAS        | 60  | E1 | 13 |
| 300 | SAN JUAN           | CURAZAO         | 12/03/19 | SCAPA        | 60  | E2 | 17 |
| 301 | PANAMA             | PILOTO          | 13/03/19 | 1335N 08022W | 29  | J  | 15 |
| 302 | COMODORO RIVADAVIA | MOUNT PLEASANT  | 13/03/19 | BOGOR        | 60  | E2 | 22 |
| 303 | COMODORO RIVADAVIA | MOUNT PLEASANT  | 13/03/19 | KABES        | 60  | E2 | 22 |
| 304 | ST. DOMINGO        | SAN JUAN        | 13/03/19 | NEGON        | 60  | E2 | 17 |
| 305 | RESISTENCIA        | EZEIZA          | 14/03/19 | KORTA        | 60  | E1 | 13 |
| 306 | COMODORO RIVADAVIA | EZEIZA          | 14/03/19 | 4000S 05100W | 60  | E2 | 22 |
| 308 | CENTRAL AMERICA    | BOGOTA          | 15/03/19 | BOLDO        | 60  | E1 | 23 |
| 309 | PANAMA             | KINGSTON        | 15/03/19 | ARNAL        | 60  | E2 | 22 |
| 310 | GUAYAQUIL          | LIMA            | 15/03/19 | VAKUD        | 60  | E2 | 22 |
| 312 | GUAYAQUIL          | CENTRAL AMERICA | 16/03/19 | OSELO        | 60  | E1 | 18 |
| 313 | GUAYAQUIL          | CENTRAL AMERICA | 16/03/19 | UGADI        | 60  | E1 | 18 |
| 314 | ST. DOMINGO        | CURAZAO         | 16/03/19 | VESKA        | 60  | E1 | 13 |
| 316 | GUAYAQUIL          | BOGOTA          | 16/03/19 | BOKAN        | 60  | E1 | 18 |
| 317 | CENTRAL AMERICA    | PANAMA          | 17/03/19 | LESIR        | 90  | E2 | 39 |
| 319 | GUAYAQUIL          | LIMA            | 17/03/19 | VAKUD        | 60  | E2 | 22 |
| 320 | LIMA               | LA PAZ          | 17/03/19 | ELAKO        | 90  | E1 | 31 |

|     |                    |                 |          |              |       |    |    |
|-----|--------------------|-----------------|----------|--------------|-------|----|----|
| 321 | CURAZAO            | ST. DOMINGO     | 17/03/19 | VESKA        | 90    | E2 | 29 |
| 323 | BOGOTA             | AMAZONICA       | 17/03/19 | ARUXA        | 60    | E1 | 18 |
| 324 | BOGOTA             | AMAZONICA       | 17/03/19 | ARUXA        | 60    | E1 | 18 |
| 325 | CURITIBA           | ATLANTICO       | 18/03/19 | TOSIV        | 60    | E1 | 18 |
| 326 | BOGOTA             | PANAMA          | 19/03/19 | DAKMO        | 60    | E2 | 22 |
| 327 | BOGOTA             | PANAMA          | 19/03/19 | DAKMO        | 60    | E2 | 22 |
| 328 | LIMA               | GUAYAQUIL       | 19/03/19 | VAKUD        | 60    | E2 | 22 |
| 329 | MAIQUETIA          | BARRANQUILLA    | 20/03/19 | SIDOS        | 60    | E2 | 17 |
| 330 | ST. DOMINGO        | MIAMI           | 20/03/19 | JUELE        | 60    | E2 | 17 |
| 331 | AMAZONICA          | LA PAZ          | 20/03/19 | KILEV        | 60    | E1 | 18 |
| 332 | CURITIBA           | RESISTENCIA     | 21/03/19 | ARULA        | 0     | E2 | 17 |
| 333 | KINGSTON           | BARRANQUILLA    | 21/03/19 | TOMEK        | 60    | E2 | 22 |
| 334 | BOGOTA             | PANAMA          | 22/03/19 | BUSMO        | 60    | E1 | 18 |
| 335 | CENTRAL AMERICA    | PANAMA          | 22/03/19 | LESIR        | 60    | E2 | 27 |
| 336 | GUAYAQUIL          | BOGOTA          | 23/03/19 | PULTU        | 60    | E1 | 18 |
| 337 | GUAYAQUIL          | BOGOTA          | 23/03/19 | ENSOL        | 60    | E2 | 22 |
| 338 | LIMA               | LA PAZ          | 24/03/19 | DOBN         | 90    | E1 | 31 |
| 339 | GUAYAQUIL          | BOGOTA          | 24/03/19 | BOKAN        | 60    | E2 | 22 |
| 340 | RESISTENCIA        | ASUNCION        | 25/03/19 | KALOM        | 60    | E1 | 13 |
| 343 | ST. DOMINGO        | CURAZAO         | 26/03/19 | VESKA        | 60    | E1 | 13 |
| 344 | GUAYAQUIL          | BOGOTA          | 27/03/19 | PULTU        | 60    | E1 | 18 |
| 345 | BOGOTA             | GUAYAQUIL       | 27/03/19 | ENSOL        | 60    | E1 | 18 |
| 346 | GUAYAQUIL          | BOGOTA          | 27/03/19 | UGUPI        | 60    | E1 | 20 |
| 347 | BOGOTA             | MAIQUETIA       | 27/03/19 | ENPUT        | 60    | E1 | 18 |
| 348 | KINGSTON           | BARRANQUILLA    | 27/03/19 | KILER        | 60    | E2 | 22 |
| 349 | MAIQUETIA          | AMAZONICA       | 28/03/19 | AKPEP        | 3.000 | E1 | 39 |
| 350 | LIMA               | GUAYAQUIL       | 28/03/19 | MOXOM        | 60    | E2 | 22 |
| 351 | COMODORO RIVADAVIA | EZEIZA          | 28/03/19 | 4800S 05200W | 60    | E2 | 22 |
| 353 | GUAYAQUIL          | LIMA            | 29/03/19 | VAKUD        | 60    | E2 | 22 |
| 354 | CURITIBA           | PILOTO          | 30/03/19 | TIGBU        | 20    | A  | 13 |
| 355 | BOGOTA             | GUAYAQUIL       | 30/03/19 | ENSOL        | 60    | E2 | 22 |
| 356 | MAIQUETIA          | BOGOTA          | 30/03/19 | ENPUT        | 30    | E2 | 22 |
| 357 | GUAYAQUIL          | BOGOTA          | 31/03/19 | ENSOL        | 60    | E2 | 22 |
| 358 | RESISTENCIA        | EZEIZA          | 31/03/19 | KORTA        | 60    | E1 | 13 |
| 359 | BOGOTA             | PANAMA          | 31/03/19 | ASEPI        | 60    | E1 | 18 |
| 360 | BOGOTA             | PANAMA          | 31/03/19 | BUSMO        | 60    | E1 | 18 |
| 361 | MAIQUETIA          | AMAZONICA       | 31/03/19 | VAGAN        | 60    | E1 | 18 |
| 362 | BOGOTA             | GUAYAQUIL       | 31/03/19 | TCO          | 60    | E1 | 18 |
| 363 | BOGOTA             | GUAYAQUIL       | 31/03/19 | PULTU        | 60    | E2 | 22 |
| 364 | MAIQUETIA          | BARRANQUILLA    | 31/03/19 | GILGA        | 30    | E2 | 22 |
| 365 | GUAYAQUIL          | BOGOTA          | 31/03/19 | PULTU        | 60    | E1 | 18 |
| 366 | KINGSTON           | BARRANQUILLA    | 01/04/19 | BOBKA        | 60    | E1 | 18 |
| 368 | RESISTENCIA        | MONTEVIDEO      | 01/04/19 | MCS          | 60    | E1 | 13 |
| 369 | GUAYAQUIL          | BOGOTA          | 01/04/19 | BOKAN        | 60    | E2 | 22 |
| 370 | CURAZAO            | PORT AU PRINCE  | 02/04/19 | LENOM        | 60    | E2 | 17 |
| 372 | KINGSTON           | CURAZAO         | 02/04/19 | TARBA        | 60    | E2 | 22 |
| 373 | RESISTENCIA        | EZEIZA          | 03/04/19 | OPNIN        | 60    | E1 | 13 |
| 374 | BOGOTA             | GUAYAQUIL       | 03/04/19 | UGUPI        | 60    | E2 | 25 |
| 375 | EZEIZA             | RESISTENCIA     | 04/04/19 | TODES        | 60    | E1 | 13 |
| 376 | MAIQUETIA          | BOGOTA          | 04/04/19 | OPRUS        | 60    | E2 | 27 |
| 377 | LA PAZ             | RESISTENCIA     | 04/04/19 | PILCO        | 60    | E1 | 23 |
| 379 | COMODORO RIVADAVIA | EZEIZA          | 04/04/19 | 4500S 05200W | 540   | E2 | 46 |
| 381 | ST. DOMINGO        | PORT AU PRINCE  | 04/04/19 | DCR          | 60    | E1 | 13 |
| 382 | MAIQUETIA          | BOGOTA          | 05/04/19 | ENPUT        | 30    | E2 | 17 |
| 383 | MERIDA             | CENTRAL AMERICA | 05/04/19 | TAP          | 60    | E1 | 18 |
| 384 | LIMA               | GUAYAQUIL       | 06/04/19 | VAKUD        | 60    | E1 | 18 |
| 385 | GUAYAQUIL          | CENTRAL AMERICA | 07/04/19 | UGADI        | 60    | E2 | 22 |
| 387 | PORT AU PRINCE     | PILOT           | 08/04/19 | NOSIS        | 90    | M  | 12 |
| 388 | GUAYAQUIL          | BOGOTA          | 09/04/19 | UGUPI        | 60    | E1 | 20 |
| 389 | ST. DOMINGO        | PORT AU PRINCE  | 09/04/19 | ETBOD        | 60    | E1 | 13 |
| 391 | BOGOTA             | MAIQUETIA       | 09/04/19 | OPRUS        | 60    | E2 | 22 |
| 392 | ANTOFAGASTA        | LIMA            | 10/04/19 | SORTA        | 840   | E2 | 46 |
| 394 | ANTOFAGASTA        | LIMA            | 10/04/19 | SORTA        | 240   | E2 | 46 |
| 396 | ANTOFAGASTA        | LIMA            | 10/04/19 | SORTA        | 90    | E1 | 26 |
| 398 | LIMA               | AMAZONICA       | 10/04/19 | LET          | 60    | E2 | 22 |
| 400 | CURAZAO            | MAIQUETIA       | 10/04/19 | ALCOT        | 60    | E1 | 18 |
| 401 | BOGOTA             | GUAYAQUIL       | 11/04/19 | BOKAN        | 150   | E2 | 46 |

|     |                    |                 |          |              |     |    |    |
|-----|--------------------|-----------------|----------|--------------|-----|----|----|
| 402 | ANTOFAGASTA        | LIMA            | 11/04/19 | IREMI        | 60  | E1 | 13 |
| 404 | COMODORO RIVADAVIA | EZEIZA          | 11/04/19 | 4500S 05200W | 480 | E2 | 46 |
| 406 | GUAYAQUIL          | BOGOTA          | 11/04/19 | ENSOL        | 60  | E1 | 18 |
| 407 | ST. DOMINGO        | PORT AU PRINCE  | 12/04/19 | PIGBI        | 60  | E1 | 13 |
| 408 | BOGOTA             | MAIQUETIA       | 13/04/19 | KIKAS        | 60  | E2 | 17 |
| 409 | COMODORO RIVADAVIA | MOUNT PLEASANT  | 13/04/19 | DIGIS        | 60  | E2 | 22 |
| 410 | RESISTENCIA        | EZEIZA          | 13/04/19 | RIOKA        | 60  | E1 | 13 |
| 411 | LIMA               | ANTOFAGASTA     | 14/04/19 | IREMI        | 60  | E1 | 18 |
| 412 | KINGSTON           | BARRANQUILLA    | 14/04/19 | 1351N 07648W | 60  | E2 | 22 |
| 413 | ST. DOMINGO        | CURAZAO         | 14/04/19 | VESKA        | 60  | E1 | 13 |
| 414 | ST. DOMINGO        | SAN JUAN        | 14/04/19 | MELLA        | 60  | E2 | 17 |
| 415 | AMAZONICA          | BOGOTA          | 14/04/19 | ARUXA        | 60  | E2 | 22 |
| 416 | GUAYAQUIL          | BOGOTA          | 15/04/19 | UGUPI        | 60  | E1 | 20 |
| 417 | CENTRAL AMERICA    | PANAMA          | 15/04/19 | BOLDO        | 90  | E2 | 49 |
| 418 | AMAZONICA          | BOGOTA          | 15/04/19 | BRACO        | 60  | E2 | 22 |
| 420 | CURAZAO            | KINGSTON        | 15/04/19 | AMBIN        | 480 | E2 | 56 |
| 421 | LIMA               | BOGOTA          | 15/04/19 | PLG          | 90  | E2 | 39 |
| 422 | LIMA               | LA PAZ          | 16/04/19 | ORALO        | 60  | E1 | 18 |
| 424 | GUAYAQUIL          | BOGOTA          | 17/04/19 | UGUPI        | 60  | E2 | 25 |
| 425 | GUAYAQUIL          | LIMA            | 17/04/19 | TERAS        | 60  | E2 | 22 |
| 427 | CORDOBA            | EZEIZA          | 17/04/19 | MUMSA        | 240 | E1 | 34 |
| 428 | GUAYAQUIL          | BOGOTA          | 17/04/19 | UGUPI        | 60  | E1 | 20 |
| 429 | KINGSTON           | BARRANQUILLA    | 17/04/19 | OTAMO        | 60  | E2 | 22 |
| 430 | ST. DOMINGO        | PORT AU PRINCE  | 18/04/19 | PIGBI        | 60  | E1 | 13 |
| 431 | BOGOTA             | PANAMA          | 20/04/19 | IRASO        | 90  | E1 | 31 |
| 432 | ANTOFAGASTA        | LIMA            | 20/04/19 | IREMI        | 90  | E1 | 26 |
| 434 | LA PAZ             | ASUNCION        | 20/04/19 | MOMDI        | 60  | E2 | 22 |
| 435 | COMODORO RIVADAVIA | MOUNT PLEASANT  | 20/04/19 | DIGIS        | 60  | E2 | 22 |
| 437 | LIMA               | GUAYAQUIL       | 20/04/19 | PABOB        | 90  | E2 | 39 |
| 438 | LIMA               | GUAYAQUIL       | 21/04/19 | PABOB        | 90  | E1 | 31 |
| 439 | ATLANTICO          | PILOTO          | 21/04/19 | 2700S 02500W | 10  | B  | 14 |
| 440 | GUAYAQUIL          | BOGOTA          | 23/04/19 | UGUPI        | 60  | E1 | 20 |
| 441 | BOGOTA             | GUAYAQUIL       | 23/04/19 | ANGEL        | 60  | E2 | 22 |
| 442 | BOGOTA             | GUAYAQUIL       | 23/04/19 | VAMOS        | 60  | E1 | 18 |
| 443 | ANTOFAGASTA        | LA PAZ          | 23/04/19 | EMPEX        | 60  | E2 | 17 |
| 444 | RESISTENCIA        | EZEIZA          | 23/04/19 | TODES        | 60  | E1 | 13 |
| 445 | RESISTENCIA        | CORDOBA         | 23/04/19 | SIKOB        | 60  | E2 | 17 |
| 446 | HABANA             | PILOTO          | 23/04/19 | MAXIM        | 48  | K  | 15 |
| 447 | MAIQUETIA          | BARRANQUILLA    | 23/04/19 | ORTIZ        | 60  | E2 | 22 |
| 448 | AMAZONICA          | BOGOTA          | 24/04/19 | ABIDE        | 60  | E2 | 22 |
| 449 | LA PAZ             | ASUNCION        | 24/04/19 | MOMDI        | 60  | E2 | 27 |
| 450 | CURITIBA           | PILOTO          | 24/04/19 | MCA          | 5   | A  | 13 |
| 451 | CURAZAO            | BARRANQUILLA    | 24/04/19 | SELAN        | 90  | E1 | 26 |
| 452 | GUAYAQUIL          | CENTRAL AMERICA | 25/04/19 | OSELO        | 60  | E1 | 18 |
| 454 | LIMA               | GUAYAQUIL       | 25/04/19 | PABOB        | 90  | E1 | 31 |
| 455 | GUAYAQUIL          | BOGOTA          | 26/04/19 | PULTU        | 60  | E1 | 18 |
| 457 | CURAZAO            | BARRANQUILLA    | 26/04/19 | SELAN        | 90  | E1 | 16 |
| 460 | CURAZAO            | BARRANQUILLA    | 26/04/19 | OROSA        | 90  | E1 | 26 |
| 461 | BOGOTA             | PANAMA          | 27/04/19 | BUXOS        | 60  | E1 | 18 |
| 462 | BOGOTA             | PANAMA          | 27/04/19 | TOKUT        | 60  | E1 | 18 |
| 463 | LIMA               | LA PAZ          | 27/04/19 | 1521S 07053W | 780 | E1 | 34 |
| 464 | CURAZAO            | BARRANQUILLA    | 27/04/19 | SELAN        | 90  | E1 | 26 |
| 465 | COMODORO RIVADAVIA | MOUNT PLEASANT  | 27/04/19 | DIGIS        | 60  | E2 | 22 |
| 466 | CURAZAO            | BARRANQUILLA    | 27/04/19 | AMBAS        | 60  | E2 | 17 |
| 468 | BOGOTA             | LIMA            | 28/04/19 | ROLUS        | 60  | E2 | 22 |
| 469 | LIMA               | GUAYAQUIL       | 28/04/19 | VAKUD        | 60  | E2 | 22 |
| 470 | GUAYAQUIL          | CENTRAL AMERICA | 29/04/19 | OSELO        | 60  | E1 | 18 |
| 471 | CURAZAO            | BARRANQUILLA    | 29/04/19 | OROSA        | 90  | E1 | 26 |
| 472 | ST. DOMINGO        | CURAZAO         | 29/04/19 | PALAS        | 60  | E1 | 13 |
| 474 | CURAZAO            | BARRANQUILLA    | 29/04/19 | AMBAS        | 60  | E1 | 13 |
| 475 | CURAZAO            | BARRANQUILLA    | 29/04/19 | SELAN        | 90  | E1 | 26 |
| 476 | COMODORO RIVADAVIA | EZEIZA          | 29/04/19 | 4500S 05000W | 210 | E2 | 46 |
| 477 | KINGSTON           | CURAZAO         | 29/04/19 | AMBIN        | 60  | E1 | 18 |
| 478 | CURITIBA           | LA PAZ          | 29/04/19 | EVLOL        | 60  | E1 | 23 |
| 479 | LIMA               | GUAYAQUIL       | 30/04/19 | PABOB        | 90  | E1 | 31 |
| 480 | LA PAZ             | LIMA            | 30/04/19 | ORALO        | 60  | E1 | 23 |
| 481 | PANAMA             | BOGOTA          | 30/04/19 | KAKOL        | 60  | E2 | 22 |

|     |                 |                 |          |              |       |    |    |
|-----|-----------------|-----------------|----------|--------------|-------|----|----|
| 482 | BOGOTA          | PANAMA          | 30/04/19 | DAKMO        | 60    | E2 | 22 |
| 483 | BOGOTA          | PANAMA          | 30/04/19 | DAKMO        | 60    | E2 | 22 |
| 484 | BOGOTA          | PANAMA          | 30/04/19 | DAKMO        | 60    | E1 | 18 |
| 485 | LA PAZ          | ASUNCION        | 01/05/19 | MOMDI        | 60    | E1 | 23 |
| 486 | LIMA            | AMAZONICA       | 01/05/19 | LET          | 60    | E2 | 22 |
| 488 | ANTOFAGASTA     | LIMA            | 01/05/19 | ALDAX        | 90    | E2 | 34 |
| 489 | BOGOTA          | PANAMA          | 01/05/19 | DAKMO        | 60    | E1 | 18 |
| 490 | RESISTENCIA     | EZEIZA          | 02/05/19 | KORTA        | 60    | E1 | 13 |
| 491 | GUAYAQUIL       | BOGOTA          | 02/05/19 | UGUPI        | 60    | E2 | 25 |
| 493 | LIMA            | AMAZONICA       | 03/05/19 | LET          | 60    | E2 | 22 |
| 494 | MAIQUETIA       | BOGOTA          | 03/05/19 | KIKAS        | 180   | E2 | 51 |
| 495 | ST. DOMINGO     | CURAZAO         | 03/05/19 | VESKA        | 60    | E1 | 13 |
| 496 | ST. DOMINGO     | CURAZAO         | 03/05/19 | VESKA        | 60    | E1 | 13 |
| 498 | LIMA            | GUAYAQUIL       | 04/05/19 | TERAS        | 60    | E1 | 18 |
| 499 | LIMA            | GUAYAQUIL       | 04/05/19 | PABOB        | 1.080 | E2 | 46 |
| 501 | PANAMA          | BOGOTA          | 04/05/19 | BUXOS        | 60    | E2 | 22 |
| 502 | ST. DOMINGO     | PORT AU PRINCE  | 04/05/19 | DCR          | 60    | E1 | 13 |
| 504 | BOGOTA          | GUAYAQUIL       | 05/05/19 | LIXAS        | 0     | M  | 14 |
| 505 | CURITIBA        | MONTEVIDEO      | 05/05/19 | CUARA        | 60    | E1 | 18 |
| 506 | LIMA            | GUAYAQUIL       | 06/05/19 | TERAS        | 60    | E1 | 18 |
| 507 | MERIDA          | CENTRAL AMERICA | 06/05/19 | NOTOS        | 420   | E1 | 39 |
| 508 | GUAYAQUIL       | BOGOTA          | 06/05/19 | ANGEL        | 60    | E1 | 18 |
| 510 | GUAYAQUIL       | BOGOTA          | 08/05/19 | UGUPI        | 60    | E1 | 15 |
| 511 | BOGOTA          | LIMA            | 08/05/19 | PLG          | 60    | E2 | 17 |
| 512 | CENTRAL AMERICA | MERIDA          | 08/05/19 | ALSAL        | 300   | E2 | 41 |
| 513 | ST. DOMINGO     | CURAZAO         | 08/05/19 | IRGUT        | 60    | E2 | 17 |
| 514 | LIMA            | LA PAZ          | 08/05/19 | ELAKO        | 90    | E1 | 31 |
| 516 | MAIQUETIA       | BOGOTA          | 09/05/19 | OPRUS        | 90    | E2 | 39 |
| 517 | BOGOTA          | PANAMA          | 09/05/19 | BUXOS        | 60    | E1 | 18 |
| 518 | GUAYAQUIL       | BOGOTA          | 10/05/19 | BOKAN        | 60    | E2 | 22 |
| 519 | GUAYAQUIL       | BOGOTA          | 10/05/19 | PULTU        | 60    | E1 | 18 |
| 522 | BOGOTA          | PANAMA          | 11/05/19 | DAKMO        | 60    | E1 | 18 |
| 524 | LIMA            | GUAYAQUIL       | 11/05/19 | TERAS        | 60    | E1 | 18 |
| 525 | GUAYAQUIL       | CENTRAL AMERICA | 12/05/19 | UGADI        | 60    | E1 | 18 |
| 526 | RESISTENCIA     | ASUNCION        | 12/05/19 | KUBIR        | 60    | E2 | 22 |
| 527 | MERIDA          | CENTRAL AMERICA | 12/05/19 | ANREX        | 300   | E2 | 51 |
| 528 | BOGOTA          | MAIQUETIA       | 12/05/19 | ENPUT        | 60    | E1 | 18 |
| 529 | BOGOTA          | MAIQUETIA       | 13/05/19 | ENPUT        | 0     | E1 | 18 |
| 530 | CURITIBA        | LA PAZ          | 13/05/19 | 1951S 05851W | 0     | E2 | 22 |
| 531 | GUAYAQUIL       | BOGOTA          | 14/05/19 | BOKAN        | 60    | E2 | 22 |
| 532 | GUAYAQUIL       | BOGOTA          | 14/05/19 | ENSOL        | 60    | E2 | 22 |
| 533 | GUAYAQUIL       | BOGOTA          | 14/05/19 | BOKAN        | 0     | E2 | 27 |
| 534 | AMAZONICA       | BOGOTA          | 14/05/19 | ABIDE        | 60    | E2 | 22 |
| 535 | BOGOTA          | PANAMA          | 15/05/19 | BUXOS        | 60    | E2 | 22 |
| 536 | BOGOTA          | GUAYAQUIL       | 15/05/19 | BOKAN        | 60    | E1 | 18 |
| 537 | BOGOTA          | GUAYAQUIL       | 15/05/19 | BOKAN        | 0     | E1 | 18 |
| 538 | HABANA          | PILOTO          | 16/05/19 | FRANT        | 32    | K  | 15 |
| 539 | BOGOTA          | LIMA            | 17/05/19 | PLG          | 60    | E1 | 18 |
| 540 | LIMA            | AMAZONICA       | 17/05/19 | LET          | 60    | E2 | 22 |
| 541 | CURAZAO         | BARRANQUILLA    | 17/05/19 | OROSA        | 90    | E1 | 26 |
| 542 | GUAYAQUIL       | BOGOTA          | 18/05/19 | PULTU        | 0     | E2 | 22 |
| 543 | PARAMARIBO      | GEORGETOWN      | 18/05/19 | KOXAM        | 90    | E2 | 29 |
| 544 | BOGOTA          | PANAMA          | 18/05/19 | BUSMO        | 60    | E2 | 22 |
| 545 | MAIQUETIA       | BOGOTA          | 18/05/19 | OPRUS        | 90    | E2 | 29 |
| 547 | PORT AU PRINCE  | KINGSTON        | 19/05/19 | KEBET        | 90    | E1 | 26 |
| 548 | GUAYAQUIL       | BOGOTA          | 20/05/19 | BOKAN        | 0     | E1 | 18 |
| 550 | LIMA            | GUAYAQUIL       | 20/05/19 | VAKUD        | 60    | E2 | 22 |
| 551 | BOGOTA          | PANAMA          | 21/05/19 | IVROS        | 60    | E1 | 18 |
| 552 | BARRANQUILLA    | CURAZAO         | 21/05/19 | SELAN        | 60    | E1 | 18 |
| 553 | LIMA            | LA PAZ          | 22/05/19 | DOBN1        | 90    | E1 | 31 |
| 554 | MAIQUETIA       | BOGOTA          | 22/05/19 | CUC          | 60    | E1 | 13 |
| 555 | MAIQUETIA       | BOGOTA          | 23/05/19 | CUC          | 60    | E2 | 22 |
| 556 | ASUNCION        | LA PAZ          | 23/05/19 | REMEK        | 900   | E2 | 46 |
| 557 | MAIQUETIA       | BOGOTA          | 24/05/19 | ENPUT        | 60    | E2 | 22 |
| 558 | GUAYAQUIL       | BOGOTA          | 24/05/19 | UGUPI        | 60    | E2 | 25 |
| 559 | MAIQUETIA       | BOGOTA          | 25/05/19 | OPRUS        | 60    | E2 | 22 |
| 560 | GUAYAQUIL       | BOGOTA          | 25/05/19 | UGUPI        | 0     | E1 | 20 |

|     |                    |                |          |              |       |    |    |
|-----|--------------------|----------------|----------|--------------|-------|----|----|
| 561 | MAIQUETIA          | BOGOTA         | 25/05/19 | CUC          | 60    | E2 | 22 |
| 562 | LIMA               | GUAYAQUIL      | 26/05/19 | TOSES        | 60    | E2 | 22 |
| 565 | RESISTENCIA        | ASUNCION       | 26/05/19 | POS          | 60    | E2 | 17 |
| 566 | HABANA             | PILOTO         | 26/05/19 | FRANT        | 28    | D  | 13 |
| 567 | GUAYAQUIL          | BOGOTA         | 27/05/19 | ENSOL        | 60    | E1 | 18 |
| 568 | BOGOTA             | PANAMA         | 27/05/19 | BUXOS        | 60    | E2 | 22 |
| 569 | GUAYAQUIL          | BOGOTA         | 27/05/19 | UGUPI        | 60    | E2 | 25 |
| 570 | BARRANQUILLA       | PILOTO         | 27/05/19 | BITIX        | 2.280 | C  | 19 |
| 571 | GUAYAQUIL          | BOGOTA         | 28/05/19 | ANGEL        | 60    | E2 | 22 |
| 572 | RESISTENCIA        | EZEIZA         | 28/05/19 | MCS          | 240   | E2 | 41 |
| 573 | GUAYAQUIL          | BOGOTA         | 28/05/19 | UGUPI        | 60    | E1 | 20 |
| 574 | ASUNCION           | LA PAZ         | 28/05/19 | MOMDI        | 60    | E2 | 22 |
| 575 | BOGOTA             | PANAMA         | 29/05/19 | BUXOS        | 0     | E2 | 22 |
| 576 | GUAYAQUIL          | BOGOTA         | 29/05/19 | UGUPI        | 60    | E1 | 20 |
| 578 | GUAYAQUIL          | LIMA           | 29/05/19 | VAKUD        | 60    | E1 | 18 |
| 580 | LIMA               | GUAYAQUIL      | 30/05/19 | TERAS        | 60    | E2 | 22 |
| 581 | ANTOFAGASTA        | LIMA           | 30/05/19 | IREMI        | 90    | E1 | 26 |
| 583 | LIMA               | GUAYAQUIL      | 30/05/19 | VAKUD        | 60    | E1 | 18 |
| 585 | LA PAZ             | ASUNCION       | 31/05/19 | MOMDI        | 60    | E1 | 23 |
| 586 | CENTRAL AMERICA    | GUAYAQUIL      | 31/05/19 | LIXAS        | 0     | E1 | 18 |
| 587 | ASUNCION           | RESISTENCIA    | 31/05/19 | POS          | 60    | E2 | 22 |
| 590 | ANTOFAGASTA        | LIMA           | 31/05/19 | IREMI        | 300   | E2 | 46 |
| 591 | AMAZONICA          | BOGOTA         | 31/05/19 | BRACO        | 60    | E2 | 22 |
| 592 | LIMA               | LA PAZ         | 01/06/19 | ORALO        | 60    | E2 | 22 |
| 593 | BOGOTA             | PANAMA         | 01/06/19 | BUXOS        | 60    | E1 | 18 |
| 594 | CURAZAO            | BARRANQUILLA   | 01/06/19 | AMBAS        | 60    | E1 | 13 |
| 596 | GUAYAQUIL          | LIMA           | 02/06/19 | VAKUD        | 60    | E2 | 22 |
| 597 | GUAYAQUIL          | BOGOTA         | 02/06/19 | PULTU        | 60    | E1 | 18 |
| 599 | BOGOTA             | PANAMA         | 04/06/19 | IVROS        | 60    | E1 | 18 |
| 600 | LA PAZ             | AMAZONICA      | 04/06/19 | RCO          | 60    | E1 | 23 |
| 601 | LA PAZ             | AMAZONICA      | 04/06/19 | RCO          | 60    | E2 | 27 |
| 602 | BOGOTA             | PILOTO         | 05/06/19 | IVROS        | 60    | I  | 18 |
| 603 | LIMA               | AMAZONICA      | 05/06/19 | LET          | 60    | E2 | 22 |
| 604 | BOGOTA             | PANAMA         | 05/06/19 | DAKMO        | 60    | E1 | 18 |
| 605 | GUAYAQUIL          | BOGOTA         | 06/06/19 | UGUPI        | 60    | E1 | 20 |
| 606 | BOGOTA             | PANAMA         | 06/06/19 | BUSMO        | 60    | E1 | 18 |
| 607 | CURAZAO            | BARRANQUILLA   | 07/06/19 | AMBAS        | 60    | E1 | 18 |
| 608 | CURAZAO            | BARRANQUILLA   | 08/06/19 | AMBAS        | 60    | E1 | 13 |
| 609 | CURAZAO            | BARRANQUILLA   | 08/06/19 | OROSA        | 90    | E1 | 26 |
| 610 | MAIQUETIA          | BOGOTA         | 09/06/19 | CUC          | 60    | E2 | 22 |
| 611 | ST. DOMINGO        | PORT AU PRINCE | 09/06/19 | ETBOD        | 60    | E1 | 13 |
| 612 | ASUNCION           | LA PAZ         | 10/06/19 | SIDAK        | 60    | E2 | 22 |
| 613 | ST. DOMINGO        | PORT AU PRINCE | 10/06/19 | OSIDU        | 60    | E1 | 13 |
| 614 | ST. DOMINGO        | CURAZAO        | 11/06/19 | PALAS        | 60    | E2 | 17 |
| 615 | PANAMA             | BARRANQUILLA   | 11/06/19 | 1228N 07725W | 60    | E2 | 17 |
| 616 | MAIQUETIA          | BARRANQUILLA   | 12/06/19 | SIDOS        | 60    | E2 | 22 |
| 617 | RESISTENCIA        | EZEIZA         | 12/06/19 | KORTA        | 60    | E1 | 13 |
| 618 | CURITIBA           | PILOTO         | 13/06/19 | BUTKI        | 15    | A  | 13 |
| 619 | AMAZONICA          | LA PAZ         | 13/06/19 | UBKAB        | 60    | E1 | 18 |
| 620 | CORDOBA            | EZEIZA         | 13/06/19 | GAVAM        | 120   | E1 | 21 |
| 621 | COMODORO RIVADAVIA | EZEIZA         | 13/06/19 | 4500S 05000W | 90    | E2 | 39 |
| 622 | ST. DOMINGO        | PORT AU PRINCE | 14/06/19 | 1858N 07153W | 60    | E1 | 13 |
| 623 | ST. DOMINGO        | PORT AU PRINCE | 14/06/19 | ETBOD        | 60    | E1 | 13 |
| 625 | LIMA               | GUAYAQUIL      | 14/06/19 | ANPAL        | 60    | E1 | 18 |
| 626 | GUAYAQUIL          | BOGOTA         | 15/06/19 | PULTU        | 60    | E2 | 27 |
| 627 | AMAZONICA          | BOGOTA         | 15/06/19 | BRACO        | 60    | E2 | 22 |
| 628 | LA PAZ             | LIMA           | 15/06/19 | OBLIR        | 60    | E1 | 23 |
| 631 | GUAYAQUIL          | BOGOTA         | 15/06/19 | BOKAN        | 60    | E2 | 22 |
| 632 | ST. DOMINGO        | PORT AU PRINCE | 15/06/19 | PIGBI        | 60    | E1 | 13 |
| 633 | PORT AU PRINCE     | HABANA         | 16/06/19 | URLAM        | 90    | E1 | 31 |
| 634 | CURAZAO            | BARRANQUILLA   | 16/06/19 | AMBAS        | 60    | E1 | 13 |
| 635 | CORDOBA            | LA PAZ         | 16/06/19 | PUBUM        | 90    | E1 | 31 |
| 636 | GUAYAQUIL          | BOGOTA         | 16/06/19 | BOKAN        | 60    | E2 | 22 |
| 637 | LIMA               | AMAZONICA      | 17/06/19 | LET          | 60    | E2 | 22 |
| 638 | LA PAZ             | ASUNCION       | 17/06/19 | MOMDI        | 60    | E1 | 23 |
| 639 | BOGOTA             | PANAMA         | 17/06/19 | DAKMO        | 60    | E1 | 18 |
| 640 | LIMA               | BOGOTA         | 17/06/19 | ROLUS        | 60    | E1 | 18 |



|     |                    |                 |          |              |     |    |    |
|-----|--------------------|-----------------|----------|--------------|-----|----|----|
| 641 | RESISTENCIA        | EZEIZA          | 18/06/19 | KORTA        | 60  | E1 | 13 |
| 642 | LIMA               | LA PAZ          | 18/06/19 | DOBN         | 90  | E1 | 31 |
| 643 | AMAZONICA          | BOGOTA          | 18/06/19 | ABIDE        | 60  | E1 | 18 |
| 644 | CURAZAO            | BARRANQUILLA    | 18/06/19 | SELAN        | 90  | E1 | 26 |
| 645 | LIMA               | GUAYAQUIL       | 19/06/19 | VAKUD        | 60  | E1 | 18 |
| 647 | LIMA               | LA PAZ          | 19/06/19 | ELAKO        | 360 | E2 | 51 |
| 648 | GUAYAQUIL          | BOGOTA          | 19/06/19 | UGUPI        | 60  | E1 | 20 |
| 649 | GUAYAQUIL          | BOGOTA          | 19/06/19 | PULTU        | 60  | E1 | 18 |
| 650 | ST. DOMINGO        | CURAZAO         | 19/06/19 | VESKA        | 60  | E1 | 13 |
| 651 | MAIQUETIA          | AMAZONICA       | 20/06/19 | VAGAN        | 180 | E1 | 39 |
| 652 | ST. DOMINGO        | SAN JUAN        | 20/06/19 | ANTEX        | 60  | E2 | 17 |
| 654 | GUAYAQUIL          | BOGOTA          | 21/06/19 | PULTU        | 60  | E2 | 22 |
| 655 | AMAZONICA          | LA PAZ          | 21/06/19 | ISARA        | 60  | E2 | 22 |
| 656 | KINGSTON           | BARRANQUILLA    | 21/06/19 | OTAMO        | 60  | E1 | 18 |
| 657 | ST. DOMINGO        | PORT AU PRINCE  | 21/06/19 | ETBOD        | 60  | E1 | 13 |
| 658 | SAN JUAN           | MAIQUETIA       | 21/06/19 | MILOK        | 60  | E1 | 13 |
| 661 | LIMA               | GUAYAQUIL       | 22/06/19 | ARNEL        | 60  | E1 | 18 |
| 662 | GUAYAQUIL          | CENTRAL AMERICA | 22/06/19 | LIXAS        | 60  | E1 | 18 |
| 663 | BOGOTA             | PANAMA          | 23/06/19 | TOKUT        | 60  | E1 | 18 |
| 664 | BOGOTA             | GUAYAQUIL       | 23/06/19 | ENSOL        | 60  | E2 | 22 |
| 665 | GUAYAQUIL          | BOGOTA          | 23/06/19 | ANRAX        | 60  | E1 | 18 |
| 666 | ST. DOMINGO        | PORT AU PRINCE  | 24/06/19 | ONPAD        | 60  | E1 | 13 |
| 667 | ST. DOMINGO        | CURAZAO         | 24/06/19 | KARUM        | 60  | E2 | 17 |
| 668 | COMODORO RIVADAVIA | MOUNT PLEASANT  | 25/06/19 | 5000S 05600W | 60  | E2 | 22 |
| 669 | MAIQUETIA          | CURAZAO         | 25/06/19 | ALCOT        | 60  | E2 | 22 |
| 670 | LIMA               | BOGOTA          | 25/06/19 | ILMUX        | 60  | E1 | 18 |
| 671 | ST. DOMINGO        | PORT AU PRINCE  | 25/06/19 | PIGBI        | 60  | E1 | 13 |
| 672 | GUAYAQUIL          | BOGOTA          | 26/06/19 | BOKAN        | 60  | E2 | 22 |
| 673 | GUAYAQUIL          | BOGOTA          | 26/06/19 | BOKAN        | 60  | E2 | 22 |
| 674 | GUAYAQUIL          | BOGOTA          | 26/06/19 | PULTU        | 0   | E2 | 22 |
| 676 | GUAYAQUIL          | LIMA            | 27/06/19 | VAKUD        | 60  | E2 | 22 |
| 678 | GUAYAQUIL          | BOGOTA          | 27/06/19 | ENSOL        | 60  | E1 | 18 |
| 679 | COMODORO RIVADAVIA | EZEIZA          | 27/06/19 | 4500S 05200W | 60  | E2 | 22 |
| 680 | RESISTENCIA        | MONTEVIDEO      | 28/06/19 | MCS          | 60  | E1 | 13 |
| 681 | CURAZAO            | BARRANQUILLA    | 28/06/19 | OROSA        | 90  | E1 | 26 |
| 682 | CENTRAL AMERICA    | GUAYAQUIL       | 29/06/19 | LIXAS        | 60  | E1 | 18 |
| 683 | LIMA               | BOGOTA          | 30/06/19 | ILMUX        | 60  | E1 | 18 |
| 684 | MAIQUETIA          | SAN JUAN        | 30/06/19 | KIKER        | 180 | E1 | 39 |
| 685 | GUAYAQUIL          | BOGOTA          | 30/06/19 | UGUPI        | 60  | E2 | 25 |
| 686 | GUAYAQUIL          | BOGOTA          | 30/06/19 | ENSOL        | 60  | E1 | 18 |
| 687 | GUAYAQUIL          | BOGOTA          | 30/06/19 | ENSOL        | 60  | E1 | 18 |
| 688 | GUAYAQUIL          | CENTRAL AMERICA | 01/07/19 | UGADI        | 60  | E1 | 18 |
| 690 | LIMA               | BOGOTA          | 01/07/19 | ILMUX        | 60  | E1 | 18 |
| 692 | LIMA               | GUAYAQUIL       | 01/07/19 | TERAS        | 0   | E2 | 22 |
| 693 | CURAZAO            | BARRANQUILLA    | 01/07/19 | SELAN        | 90  | E1 | 21 |
| 694 | CURAZAO            | BARRANQUILLA    | 01/07/19 | SELAN        | 240 | E1 | 29 |
| 695 | CURAZAO            | BARRANQUILLA    | 01/07/19 | SELAN        | 0   | E1 | 13 |
| 696 | CURAZAO            | MAIQUETIA       | 01/07/19 | KABON        | 0   | E1 | 13 |
| 697 | RESISTENCIA        | CORDOBA         | 02/07/19 | SIKOB        | 0   | E2 | 17 |
| 699 | LIMA               | AMAZONICA       | 02/07/19 | LIMPO        | 60  | E1 | 18 |
| 700 | CURITIBA           | PILOTO          | 02/07/19 | UBMOP        | 40  | B  | 14 |
| 701 | GUAYAQUIL          | BOGOTA          | 03/07/19 | UGUPI        | 60  | E1 | 20 |
| 702 | LA PAZ             | LIMA            | 03/07/19 | DOBN         | 90  | E2 | 39 |
| 703 | BOGOTA             | MAIQUETIA       | 03/07/19 | OPRUS        | 60  | E2 | 22 |
| 704 | GUAYAQUIL          | BOGOTA          | 04/07/19 | PULTU        | 60  | E2 | 22 |
| 705 | MAIQUETIA          | BOGOTA          | 04/07/19 | PAY          | 180 | E1 | 34 |
| 707 | ANTOFAGASTA        | LIMA            | 04/07/19 | SORTA        | 420 | E1 | 34 |
| 709 | PARAMARIBO         | GEORGETOWN      | 05/07/19 | UMREM        | 90  | E1 | 21 |
| 710 | LIMA               | GUAYAQUIL       | 06/07/19 | VAKUD        | 0   | E1 | 18 |
| 712 | CURAZAO            | BARRANQUILLA    | 06/07/19 | AMBAS        | 0   | E1 | 13 |
| 713 | CURITIBA           | PILOTO          | 06/07/19 | VUDAV        | 30  | J  | 20 |
| 714 | KINGSTON           | CURAZAO         | 06/07/19 | DIBOK        | 60  | E1 | 18 |
| 715 | LIMA               | GUAYAQUIL       | 06/07/19 | LOBOT        | 60  | E1 | 18 |
| 717 | RESISTENCIA        | EZEIZA          | 07/07/19 | KORTA        | 60  | E1 | 13 |
| 718 | PIARCO             | PARAMARIBO      | 08/07/19 | DOLRO        | 60  | E1 | 18 |
| 719 | ATLANTICO          | ABDIJAN         | 08/07/19 | 0700S 01000W | 90  | E2 | 39 |
| 720 | ATLANTICO          | LUANDA          | 09/07/19 | 1400S 01000W | 60  | E2 | 22 |

|     |                    |                 |          |              |       |    |    |
|-----|--------------------|-----------------|----------|--------------|-------|----|----|
| 721 | BARRANQUILLA       | CURAZAO         | 09/07/19 | AMBAS        | 120   | E1 | 26 |
| 722 | BARRANQUILLA       | KINGSTON        | 09/07/19 | KILER        | 60    | E2 | 27 |
| 723 | BARRANQUILLA       | KINGSTON        | 09/07/19 | KILER        | 60    | E2 | 27 |
| 724 | LIMA               | LA PAZ          | 10/07/19 | RAXUN        | 90    | E2 | 39 |
| 725 | COMODORO RIVADAVIA | MOUNT PLEASANT  | 10/07/19 | 4556S 06339W | 3.180 | E2 | 51 |
| 726 | GUAYAQUIL          | BOGOTA          | 11/07/19 | UGUPI        | 60    | E1 | 20 |
| 727 | COMODORO RIVADAVIA | EZEIZA          | 11/07/19 | 4500S 05200W | 480   | E2 | 51 |
| 728 | ST. DOMINGO        | SAN JUAN        | 11/07/19 | ANTEX        | 60    | E2 | 17 |
| 729 | GUAYAQUIL          | BOGOTA          | 12/07/19 | UGUPI        | 60    | E1 | 20 |
| 730 | RESISTENCIA        | EZEIZA          | 13/07/19 | KORTA        | 60    | E2 | 17 |
| 731 | LIMA               | GUAYAQUIL       | 13/07/19 | ANPAL        | 0     | E2 | 22 |
| 733 | ST. DOMINGO        | CURAZAO         | 13/07/19 | VESKA        | 60    | E1 | 13 |
| 734 | ST. DOMINGO        | CURAZAO         | 14/07/19 | POKAK        | 60    | E1 | 13 |
| 735 | BOGOTA             | PANAMA          | 15/07/19 | TOKUT        | 60    | E1 | 18 |
| 737 | LIMA               | GUAYAQUIL       | 15/07/19 | PABOB        | 60    | E2 | 22 |
| 738 | LA PAZ             | AMAZONICA       | 15/07/19 | RCO          | 60    | E1 | 33 |
| 739 | BARRANQUILLA       | CURAZAO         | 15/07/19 | SELAN        | 60    | E1 | 18 |
| 740 | ATLANTICO          | DAKAR           | 16/07/19 | TASIL        | 90    | E2 | 39 |
| 741 | RESISTENCIA        | LA PAZ          | 16/07/19 | PILCO        | 90    | E2 | 34 |
| 742 | PANAMA             | KINGSTON        | 16/07/19 | ARNAL        | 60    | E1 | 18 |
| 743 | RESISTENCIA        | EZEIZA          | 16/07/19 | KORTA        | 60    | E1 | 18 |
| 744 | GUAYAQUIL          | LIMA            | 17/07/19 | TOSES        | 60    | E2 | 22 |
| 746 | GUAYAQUIL          | LIMA            | 17/07/19 | ARNEL        | 60    | E2 | 22 |
| 747 | ST. DOMINGO        | SAN JUAN        | 18/07/19 | SATOE        | 60    | E1 | 13 |
| 748 | GUAYAQUIL          | LIMA            | 18/07/19 | TOSES        | 60    | E2 | 22 |
| 749 | AMAZONICA          | LA PAZ          | 19/07/19 | KILEV        | 60    | E1 | 18 |
| 750 | ST. DOMINGO        | CURAZAO         | 19/07/19 | PIGBI        | 60    | E1 | 18 |
| 752 | COMODORO RIVADAVIA | EZEIZA          | 19/07/19 | 4500S 05200W | 480   | E2 | 51 |
| 753 | ST. DOMINGO        | CURAZAO         | 20/07/19 | VESKA        | 60    | E1 | 13 |
| 754 | GUAYAQUIL          | BOGOTA          | 21/07/19 | PULTU        | 60    | E1 | 18 |
| 755 | LIMA               | BOGOTA          | 22/07/19 | LET          | 60    | E2 | 22 |
| 756 | ST. DOMINGO        | CURAZAO         | 22/07/19 | KARUM        | 60    | E1 | 13 |
| 758 | LIMA               | AMAZONICA       | 23/07/19 | LET          | 60    | E1 | 18 |
| 759 | ST. DOMINGO        | SAN JUAN        | 23/07/19 | ANTEX        | 60    | E2 | 17 |
| 760 | ST. DOMINGO        | PORT AU PRINCE  | 24/07/19 | DCR          | 60    | E2 | 17 |
| 761 | GUAYAQUIL          | BOGOTA          | 24/07/19 | PULTU        | 60    | E2 | 22 |
| 762 | ANTOFAGASTA        | LIMA            | 25/07/19 | IREMI        | 0     | E2 | 22 |
| 764 | BOGOTA             | MAIQUETIA       | 25/07/19 | KIKAS        | 60    | E2 | 22 |
| 765 | LIMA               | LA PAZ          | 25/07/19 | ELAKO        | 120   | E1 | 31 |
| 766 | KINGSTON           | BARRANQUILLA    | 25/07/19 | OTAMO        | 60    | E2 | 22 |
| 767 | ST. DOMINGO        | CURAZAO         | 25/07/19 | PALAS        | 0     | E1 | 13 |
| 768 | LIMA               | BOGOTA          | 25/07/19 | ROLUS        | 0     | E1 | 18 |
| 769 | BARRANQUILLA       | CURAZAO         | 26/07/19 | AMBAS        | 60    | E1 | 18 |
| 770 | COMODORO RIVADAVIA | EZEIZA          | 26/07/19 | 4500S 05200W | 480   | E2 | 51 |
| 771 | BARRANQUILLA       | CURAZAO         | 26/07/19 | AMBAS        | 60    | E1 | 18 |
| 772 | LIMA               | LA PAZ          | 27/07/19 | ELAKO        | 90    | E1 | 31 |
| 773 | ST. DOMINGO        | CURAZAO         | 27/07/19 | BEROX        | 60    | E2 | 17 |
| 774 | LIMA               | GUAYAQUIL       | 28/07/19 | ANPAL        | 60    | E1 | 18 |
| 775 | MAIQUETIA          | CURAZAO         | 28/07/19 | KABON        | 60    | E1 | 13 |
| 776 | LIMA               | LA PAZ          | 29/07/19 | ORALO        | 60    | E1 | 18 |
| 777 | KINGSTON           | HABANA          | 29/07/19 | PUTUL        | 60    | E2 | 22 |
| 778 | LIMA               | BOGOTA          | 29/07/19 | ROLUS        | 60    | E2 | 22 |
| 780 | ANTOFAGASTA        | LIMA            | 31/07/19 | ALDAX        | 60    | E1 | 13 |
| 782 | PORT AU PRINCE     | MIAMI           | 31/07/19 | JOSES        | 90    | E1 | 31 |
| 784 | BOGOTA             | GUAYAQUIL       | 31/07/19 | ENSOL        | 60    | E1 | 18 |
| 785 | BOGOTA             | GUAYAQUIL       | 31/07/19 | UGUPI        | 60    | E1 | 20 |
| 786 | BOGOTA             | GUAYAQUIL       | 31/07/19 | UGUPI        | 60    | E1 | 20 |
| 787 | BOGOTA             | GUAYAQUIL       | 31/07/19 | BOKAN        | 60    | E1 | 18 |
| 788 | ST. DOMINGO        | PORT AU PRINCE  | 01/08/19 | ETBOD        | 60    | E1 | 18 |
| 789 | BOGOTA             | PANAMA          | 02/08/19 | BUXOS        | 60    | E1 | 18 |
| 791 | MAIQUETIA          | BOGOTA          | 02/08/19 | ENPUT        | 60    | E2 | 22 |
| 792 | GUAYAQUIL          | BOGOTA          | 02/08/19 | ANGEL        | 60    | E1 | 18 |
| 793 | MAIQUETIA          | BOGOTA          | 03/08/19 | KIKAS        | 60    | E2 | 22 |
| 794 | ASUNCION           | LA PAZ          | 04/08/19 | MOMDI        | 60    | E2 | 22 |
| 795 | GUAYAQUIL          | CENTRAL AMERICA | 04/08/19 | UGADI        | 60    | E1 | 23 |
| 796 | ST. DOMINGO        | CURAZAO         | 04/08/19 | PALAS        | 60    | E1 | 13 |
| 797 | ST. DOMINGO        | CURAZAO         | 04/08/19 | VESKA        | 60    | E1 | 13 |

|     |                 |                 |          |              |       |    |    |
|-----|-----------------|-----------------|----------|--------------|-------|----|----|
| 798 | MAIQUETIA       | BOGOTA          | 04/08/19 | KIKAS        | 60    | E2 | 22 |
| 799 | LIMA            | BOGOTA          | 05/08/19 | ROLUS        | 0     | E2 | 22 |
| 800 | NEW YORK        | PIARCO          | 05/08/19 | 1800N 05000W | 60    | E1 | 13 |
| 801 | ATLANTICO       | ABDIJAN         | 06/08/19 | 0700S 01000W | 0     | E2 | 22 |
| 802 | GUAYAQUIL       | CENTRAL AMERICA | 07/08/19 | LOGAL        | 60    | E2 | 22 |
| 803 | MAIQUETIA       | BOGOTA          | 07/08/19 | KIKAS        | 60    | E2 | 22 |
| 804 | GUAYAQUIL       | BOGOTA          | 08/08/19 | ENSOL        | 0     | E2 | 22 |
| 805 | PANAMA          | BOGOTA          | 08/08/19 | DAKMO        | 60    | E2 | 22 |
| 806 | LIMA            | AMAZONICA       | 09/08/19 | LET          | 0     | E2 | 22 |
| 807 | CENTRAL AMERICA | GUAYAQUIL       | 09/08/19 | LIXAS        | 90    | E1 | 26 |
| 808 | ST. DOMINGO     | CURAZAO         | 11/08/19 | BEROX        | 60    | E1 | 13 |
| 809 | GUAYAQUIL       | LIMA            | 11/08/19 | TOSES        | 60    | E2 | 22 |
| 810 | ST. DOMINGO     | CURAZAO         | 11/08/19 | PALAS        | 60    | E1 | 13 |
| 812 | LA PAZ          | LIMA            | 12/08/19 | DOBN         | 90    | E1 | 31 |
| 813 | RESISTENCIA     | LA PAZ          | 13/08/19 | PILCO        | 90    | E2 | 34 |
| 815 | GUAYAQUIL       | LIMA            | 13/08/19 | ANPAL        | 60    | E1 | 18 |
| 816 | BOGOTA          | GUAYAQUIL       | 14/08/19 | UGUPI        | 60    | E2 | 25 |
| 817 | LA PAZ          | CURITIBA        | 14/08/19 | SIDAK        | 3.600 | E1 | 49 |
| 818 | KINGSTON        | BARRANQUILLA    | 14/08/19 | KILER        | 60    | E1 | 18 |
| 819 | CURITIBA        | ASUNCION        | 14/08/19 | REBOX        | 60    | E1 | 18 |
| 821 | LIMA            | GUAYAQUIL       | 15/08/19 | LOBOT        | 30    | E2 | 22 |
| 822 | LIMA            | GUAYAQUIL       | 15/08/19 | ANPAL        | 0     | E2 | 22 |
| 823 | LIMA            | GUAYAQUIL       | 15/08/19 | VAKUD        | 0     | E2 | 22 |
| 825 | LIMA            | ANTOFAGASTA     | 15/08/19 | ALDAX        | 0     | E1 | 13 |
| 826 | ST. DOMINGO     | CURAZAO         | 15/08/19 | VESKA        | 60    | E1 | 13 |
| 828 | MENDOZA         | CORDOBA         | 16/08/19 | GILSA        | 60    | E1 | 13 |
| 830 | ST. DOMINGO     | CURAZAO         | 17/08/19 | BEROX        | 60    | E1 | 13 |
| 831 | MAIQUETIA       | BOGOTA          | 18/08/19 | PAY          | 60    | E2 | 22 |
| 832 | LA PAZ          | LIMA            | 19/08/19 | DOBN         | 90    | E1 | 31 |
| 833 | LIMA            | GUAYAQUIL       | 19/08/19 | TERAS        | 90    | E1 | 31 |
| 835 | MAIQUETIA       | BOGOTA          | 19/08/19 | ENPUT        | 60    | E2 | 22 |
| 836 | ANTOFAGASTA     | CORDOBA         | 20/08/19 | KONRI        | 90    | E1 | 26 |
| 837 | LIMA            | GUAYAQUIL       | 21/08/19 | ARNEL        | 0     | E2 | 22 |
| 839 | PORT AU PRINCE  | CURAZAO         | 21/08/19 | LENOM        | 90    | E1 | 31 |
| 840 | MAIQUETIA       | BARRANQUILLA    | 21/08/19 | SIDOS        | 60    | E1 | 23 |
| 841 | ST. DOMINGO     | CURAZAO         | 21/08/19 | BEROX        | 60    | E1 | 13 |
| 842 | GUAYAQUIL       | BOGOTA          | 22/08/19 | ENSOL        | 60    | E2 | 22 |
| 843 | MAIQUETIA       | CURAZAO         | 22/08/19 | ESIPO        | 60    | E1 | 18 |
| 844 | BOGOTA          | GUAYAQUIL       | 23/08/19 | BOKAN        | 60    | E1 | 23 |
| 845 | ANTOFAGASTA     | CORDOBA         | 24/08/19 | KONRI        | 90    | L  | 28 |
| 847 | GUAYAQUIL       | BOGOTA          | 25/08/19 | UGUPI        | 60    | E1 | 20 |
| 848 | RESISTENCIA     | MONTEVIDEO      | 25/08/19 | KORTA        | 60    | E1 | 18 |
| 849 | BOGOTA          | MAIQUETIA       | 25/08/19 | KIKAS        | 60    | E1 | 18 |
| 850 | GUAYAQUIL       | BOGOTA          | 25/08/19 | BOKAN        | 60    | E2 | 22 |
| 851 | GUAYAQUIL       | BOGOTA          | 25/08/19 | BOKAN        | 60    | E2 | 22 |
| 852 | LA PAZ          | LIMA            | 26/08/19 | OBLIR        | 60    | E1 | 18 |
| 853 | CORDOBA         | MENDOZA         | 26/08/19 | KOVUN        | 60    | E2 | 22 |
| 854 | LIMA            | LA PAZ          | 26/08/19 | ORALO        | 60    | E1 | 18 |
| 855 | LIMA            | GUAYAQUIL       | 26/08/19 | TERAS        | 60    | E2 | 22 |
| 856 | LIMA            | BOGOTA          | 26/08/19 | ROLUS        | 60    | E1 | 18 |
| 857 | ST. DOMINGO     | CURAZAO         | 27/08/19 | POKAK        | 60    | E2 | 17 |
| 858 | RESISTENCIA     | EZEIZA          | 28/08/19 | TODES        | 60    | E2 | 17 |
| 859 | GUAYAQUIL       | BOGOTA          | 28/08/19 | ANGEL        | 60    | E1 | 18 |
| 861 | GUAYAQUIL       | CENTRAL AMERICA | 30/08/19 | UGADI        | 60    | E1 | 23 |
| 862 | BOGOTA          | GUAYAQUIL       | 30/08/19 | UGUPI        | 60    | E2 | 25 |
| 863 | HABANA          | PILOTO          | 31/08/19 | DYNAH        | 15    | B  | 19 |
| 864 | CORDOBA         | MENDOZA         | 31/08/19 | GILSA        | 90    | E1 | 26 |
| 865 | ASUNCION        | LA PAZ          | 31/08/19 | BUXOR        | 420   | E2 | 46 |
| 866 | ST. DOMINGO     | SAN JUAN        | 31/08/19 | NEGON        | 60    | E1 | 13 |
| 867 | ST. DOMINGO     | SAN JUAN        | 31/08/19 | BETIR        | 60    | E2 | 17 |
| 868 | GUAYAQUIL       | BOGOTA          | 01/09/19 | PULTU        | 0     | E1 | 18 |
| 869 | GUAYAQUIL       | BOGOTA          | 01/09/19 | PULTU        | 60    | E2 | 22 |
| 870 | MAIQUETIA       | BOGOTA          | 02/09/19 | OPRUS        | 60    | E2 | 22 |
| 871 | LIMA            | LA PAZ          | 03/09/19 | DOBN         | 0     | E2 | 27 |
| 872 | GUAYAQUIL       | BOGOTA          | 04/09/19 | ENSOL        | 0     | E2 | 22 |
| 873 | GUAYAQUIL       | BOGOTA          | 04/09/19 | UGUPI        | 60    | E1 | 20 |
| 874 | LIMA            | GUAYAQUIL       | 04/09/19 | ARNEL        | 60    | E1 | 18 |

|     |                 |                 |          |       |     |    |    |
|-----|-----------------|-----------------|----------|-------|-----|----|----|
| 875 | CENTRAL AMERICA | PANAMA          | 04/09/19 | PAPIN | 90  | E1 | 31 |
| 876 | RESISTENCIA     | ASUNCION        | 04/09/19 | REPAM | 60  | E2 | 17 |
| 877 | ST. DOMINGO     | CURAZAO         | 04/09/19 | VESKA | 60  | E1 | 13 |
| 878 | MERIDA          | CENTRAL AMERICA | 04/09/19 | ANREX | 60  | E1 | 18 |
| 879 | LIMA            | GUAYAQUIL       | 05/09/19 | ARNEL | 0   | E1 | 18 |
| 880 | BOGOTA          | PANAMA          | 05/09/19 | BUXOS | 60  | E2 | 22 |
| 882 | MAIQUETIA       | BARRANQUILLA    | 06/09/19 | GILGA | 60  | E2 | 22 |
| 883 | BOGOTA          | GUAYAQUIL       | 07/09/19 | ENSOL | 60  | E2 | 22 |
| 884 | LIMA            | BOGOTA          | 08/09/19 | ROLUS | 60  | E1 | 18 |
| 885 | GUAYAQUIL       | LIMA            | 08/09/19 | VAKUD | 60  | E1 | 18 |
| 887 | GUAYAQUIL       | BOGOTA          | 08/09/19 | UGUPI | 60  | E1 | 20 |
| 888 | LIMA            | LA PAZ          | 09/09/19 | DOBNI | 90  | E1 | 31 |
| 889 | CENTRAL AMERICA | PANAMA          | 09/09/19 | PAPIN | 90  | E2 | 34 |
| 890 | ST. DOMINGO     | CURAZAO         | 09/09/19 | VESKA | 60  | E1 | 13 |
| 891 | ST. DOMINGO     | PORT AU PRINCE  | 09/09/19 | ETBOD | 60  | E1 | 18 |
| 892 | ST. DOMINGO     | PORT AU PRINCE  | 09/09/19 | ETBOD | 60  | E1 | 18 |
| 893 | ST. DOMINGO     | PORT AU PRINCE  | 09/09/19 | PIGBI | 60  | E1 | 18 |
| 895 | ST. DOMINGO     | CURAZAO         | 11/09/19 | IRGUT | 60  | E1 | 13 |
| 896 | ST. DOMINGO     | CURAZAO         | 11/09/19 | POKAK | 60  | E1 | 13 |
| 897 | MAIQUETIA       | BOGOTA          | 12/09/19 | AMAYA | 60  | E2 | 22 |
| 898 | MAIQUETIA       | BOGOTA          | 12/09/19 | PAY   | 60  | E1 | 18 |
| 900 | BOGOTA          | MAIQUETIA       | 12/09/19 | ENPUT | 60  | E2 | 22 |
| 901 | RESISTENCIA     | ASUNCION        | 13/09/19 | REPAM | 60  | E2 | 17 |
| 902 | CURAZAO         | KINGSTON        | 13/09/19 | DIBOK | 90  | E1 | 31 |
| 903 | GUAYAQUIL       | LIMA            | 14/09/19 | ARNEL | 0   | E2 | 22 |
| 905 | ST. DOMINGO     | CURAZAO         | 15/09/19 | VESKA | 60  | E1 | 13 |
| 906 | BOGOTA          | PANAMA          | 16/09/19 | DAKMO | 60  | E1 | 18 |
| 907 | BOGOTA          | PANAMA          | 16/09/19 | DAKMO | 60  | E1 | 18 |
| 908 | BOGOTA          | PANAMA          | 16/09/19 | KAKOL | 60  | E2 | 22 |
| 909 | LIMA            | LA PAZ          | 17/09/19 | DOBNI | 0   | E1 | 23 |
| 911 | RESISTENCIA     | LA PAZ          | 18/09/19 | PILCO | 90  | E1 | 26 |
| 912 | KINGSTON        | PORT AU PRINCE  | 18/09/19 | KEBET | 60  | E1 | 18 |
| 913 | LIMA            | BOGOTA          | 18/09/19 | ROLUS | 60  | E2 | 22 |
| 914 | KINGSTON        | BARRANQUILLA    | 19/09/19 | KILER | 60  | E1 | 13 |
| 915 | CURAZAO         | BARRANQUILLA    | 19/09/19 | OROSA | 90  | E2 | 39 |
| 916 | AMAZONICA       | BOGOTA          | 21/09/19 | ARUXA | 60  | E2 | 22 |
| 917 | LIMA            | LA PAZ          | 21/09/19 | PDO   | 60  | E2 | 22 |
| 918 | ST. DOMINGO     | SAN JUAN        | 21/09/19 | SATOE | 60  | E2 | 17 |
| 919 | ST. DOMINGO     | SAN JUAN        | 21/09/19 | KATOK | 60  | E1 | 13 |
| 920 | GUAYAQUIL       | BOGOTA          | 22/09/19 | UGUPI | 60  | E2 | 25 |
| 921 | LIMA            | LA PAZ          | 22/09/19 | DOBNI | 90  | E1 | 31 |
| 922 | ST. DOMINGO     | CURAZAO         | 22/09/19 | BEROX | 60  | E1 | 13 |
| 923 | ASUNCION        | CURITIBA        | 22/09/19 | REMEK | 60  | E2 | 22 |
| 924 | ANTOFAGASTA     | LIMA            | 23/09/19 | IREMI | 60  | E1 | 18 |
| 926 | GUAYAQUIL       | BOGOTA          | 23/09/19 | BOKAN | 0   | E2 | 22 |
| 927 | GUAYAQUIL       | BOGOTA          | 23/09/19 | UGUPI | 60  | E1 | 20 |
| 928 | GUAYAQUIL       | BOGOTA          | 23/09/19 | UGUPI | 60  | E1 | 20 |
| 929 | AMAZONICA       | MAIQUETIA       | 24/09/19 | VUMPI | 60  | E1 | 18 |
| 930 | CURAZAO         | MAIQUETIA       | 24/09/19 | VODIN | 791 | E2 | 46 |
| 931 | GUAYAQUIL       | BOGOTA          | 24/09/19 | UGUPI | 60  | E2 | 25 |
| 932 | GUAYAQUIL       | BOGOTA          | 24/09/19 | UGUPI | 60  | E2 | 25 |
| 934 | GUAYAQUIL       | BOGOTA          | 24/09/19 | UGUPI | 0   | E2 | 25 |
| 935 | AMAZONICA       | MAIQUETIA       | 24/09/19 | VUMPI | 60  | E1 | 18 |
| 936 | MAIQUETIA       | BOGOTA          | 25/09/19 | KIKAS | 60  | E2 | 22 |
| 937 | RESISTENCIA     | EZEIZA          | 27/09/19 | KORTA | 60  | E2 | 17 |
| 938 | PANAMA          | KINGSTON        | 27/09/19 | DAGUD | 60  | E1 | 18 |
| 939 | KINGSTON        | PANAMA          | 27/09/19 | ARNAL | 60  | E1 | 18 |
| 940 | GUAYAQUIL       | BOGOTA          | 27/09/19 | PULTU | 60  | E1 | 18 |
| 941 | GUAYAQUIL       | BOGOTA          | 28/09/19 | ENSOL | 60  | E1 | 18 |
| 942 | GUAYAQUIL       | BOGOTA          | 28/09/19 | ANRAX | 0   | E2 | 22 |
| 944 | GUAYAQUIL       | BOGOTA          | 28/09/19 | PULTU | 60  | E1 | 18 |
| 946 | GUAYAQUIL       | BOGOTA          | 28/09/19 | BOKAN | 60  | E2 | 22 |
| 947 | GUAYAQUIL       | BOGOTA          | 28/09/19 | UGUPI | 0   | E2 | 25 |
| 948 | SANTIAGO        | MENDOZA         | 28/09/19 | MIBAS | 0   | E1 | 13 |
| 949 | AMAZONICA       | BOGOTA          | 29/09/19 | ARUXA | 0   | E2 | 22 |
| 950 | LIMA            | GUAYAQUIL       | 01/10/19 | ARNEL | 90  | E2 | 39 |
| 952 | MAIQUETIA       | BOGOTA          | 01/10/19 | ENPUT | 30  | E2 | 27 |

|      |                |                 |          |              |     |    |    |
|------|----------------|-----------------|----------|--------------|-----|----|----|
| 953  | ASUNCION       | LA PAZ          | 01/10/19 | MOMDI        | 60  | E1 | 18 |
| 955  | AMAZONICA      | BOGOTA          | 02/10/19 | ABIDE        | 60  | E1 | 18 |
| 956  | BOGOTA         | GUAYAQUIL       | 02/10/19 | UGUPI        | 60  | E1 | 20 |
| 957  | ST. DOMINGO    | PORT AU PRINCE  | 03/10/19 | PIGBI        | 60  | E1 | 13 |
| 958  | GUAYAQUIL      | LIMA            | 04/10/19 | ARNEL        | 60  | E2 | 22 |
| 960  | ST. DOMINGO    | MIAMI           | 04/10/19 | POKEG        | 60  | E1 | 13 |
| 961  | RESISTENCIA    | LA PAZ          | 05/10/19 | PILCO        | 90  | E1 | 26 |
| 962  | GUAYAQUIL      | CENTRAL AMERICA | 05/10/19 | LIXAS        | 60  | E2 | 27 |
| 963  | AMAZONICA      | LA PAZ          | 06/10/19 | EROGI        | 60  | E2 | 22 |
| 964  | GUAYAQUIL      | BOGOTA          | 06/10/19 | UGUPI        | 60  | E1 | 20 |
| 965  | AMAZONICA      | MAIQUETIA       | 06/10/19 | PAKON        | 60  | E1 | 18 |
| 966  | ST. DOMINGO    | CURAZAO         | 08/10/19 | BEROX        | 60  | E1 | 13 |
| 967  | GUAYAQUIL      | BOGOTA          | 10/10/19 | UGUPI        | 60  | E1 | 20 |
| 968  | GUAYAQUIL      | BOGOTA          | 11/10/19 | UGUPI        | 60  | E1 | 20 |
| 969  | AMAZONICA      | LA PAZ          | 11/10/19 | ARUXA        | 60  | E1 | 18 |
| 970  | GUAYAQUIL      | BOGOTA          | 12/10/19 | ANGEL        | 60  | E1 | 18 |
| 971  | CORDOBA        | MENDOZA         | 13/10/19 | SOLER        | 60  | E1 | 18 |
| 972  | GUAYAQUIL      | BOGOTA          | 14/10/19 | UGUPI        | 60  | E1 | 20 |
| 973  | ATLANTICO      | LUANDA          | 14/10/19 | 1400S 01000W | 120 | E1 | 26 |
| 974  | ATLANTICO      | DAKAR           | 14/10/19 | TASIL        | 240 | E1 | 34 |
| 975  | GUAYAQUIL      | BOGOTA          | 15/10/19 | UGUPI        | 60  | E1 | 20 |
| 976  | CORDOBA        | LA PAZ          | 15/10/19 | GAXOK        | 90  | E2 | 39 |
| 977  | LIMA           | LA PAZ          | 15/10/19 | DOBNI        | 90  | E1 | 31 |
| 978  | ANTOFAGASTA    | CORDOBA         | 15/10/19 | KONRI        | 90  | E1 | 26 |
| 980  | BOGOTA         | PANAMA          | 15/10/19 | DAKMO        | 60  | E2 | 22 |
| 981  | SAN JUAN       | MAIQUETIA       | 15/10/19 | MILOK        | 60  | E2 | 17 |
| 982  | CURAZAO        | BARRANQUILLA    | 16/10/19 | SELAN        | 68  | E1 | 21 |
| 983  | ST. DOMINGO    | MIAMI           | 17/10/19 | JUELE        | 60  | E1 | 13 |
| 984  | GUAYAQUIL      | BOGOTA          | 18/10/19 | UGUPI        | 60  | E1 | 20 |
| 985  | GUAYAQUIL      | BOGOTA          | 18/10/19 | UGUPI        | 60  | E2 | 25 |
| 986  | BOGOTA         | GUAYAQUIL       | 18/10/19 | ANRAX        | 90  | E2 | 39 |
| 987  | RESISTENCIA    | LA PAZ          | 19/10/19 | PILCO        | 90  | E1 | 26 |
| 988  | AMAZONICA      | LA PAZ          | 19/10/19 | RCO          | 0   | E2 | 22 |
| 989  | PARAMARIBO     | GEORGETOWN      | 19/10/19 | GEKOS        | 60  | E1 | 23 |
| 991  | AMAZONICA      | LA PAZ          | 19/10/19 | KILEV        | 60  | E1 | 18 |
| 992  | ST. DOMINGO    | CURAZAO         | 19/10/19 | VESKA        | 60  | E1 | 18 |
| 993  | GUAYAQUIL      | BOGOTA          | 20/10/19 | BOKAN        | 60  | E1 | 18 |
| 994  | LIMA           | GUAYAQUIL       | 21/10/19 | TERAS        | 60  | E2 | 22 |
| 995  | GUAYAQUIL      | BOGOTA          | 21/10/19 | PULTU        | 60  | E1 | 18 |
| 996  | GUAYAQUIL      | BOGOTA          | 22/10/19 | UGUPI        | 60  | E1 | 20 |
| 997  | LIMA           | ANTOFAGASTA     | 22/10/19 | ARI          | 60  | E1 | 13 |
| 998  | AMAZONICA      | BOGOTA          | 22/10/19 | ABIDE        | 60  | E1 | 18 |
| 999  | GUAYAQUIL      | BOGOTA          | 23/10/19 | UGUPI        | 60  | E2 | 25 |
| 1000 | GUAYAQUIL      | BOGOTA          | 23/10/19 | ANRAX        | 60  | E2 | 22 |
| 1001 | RESISTENCIA    | EZEIZA          | 23/10/19 | KORTA        | 60  | E1 | 18 |
| 1002 | LIMA           | ANTOFAGASTA     | 24/10/19 | SORTA        | 60  | E1 | 0  |
| 1004 | PORT AU PRINCE | ST. DOMINGO     | 24/10/19 | ONPAD        | 90  | E1 | 31 |
| 1006 | GUAYAQUIL      | BOGOTA          | 24/10/19 | VAMOS        | 60  | E2 | 22 |
| 1007 | CORDOBA        | LA PAZ          | 26/10/19 | PUPON        | 90  | E2 | 39 |
| 1008 | BOGOTA         | AMAZONICA       | 26/10/19 | LET          | 60  | E2 | 22 |
| 1009 | CORDOBA        | LA PAZ          | 27/10/19 | PUBUM        | 90  | E2 | 39 |
| 1010 | CORDOBA        | LA PAZ          | 27/10/19 | PUBUM        | 90  | E2 | 39 |
| 1011 | LIMA           | LA PAZ          | 27/10/19 | DOBNI        | 0   | E1 | 23 |
| 1012 | BOGOTA         | AMAZONICA       | 27/10/19 | ABIDE        | 60  | E2 | 22 |
| 1013 | GUAYAQUIL      | BOGOTA          | 27/10/19 | UGUPI        | 60  | E1 | 20 |
| 1014 | GUAYAQUIL      | BOGOTA          | 30/10/19 | UGUPI        | 60  | E1 | 20 |
| 1015 | LA PAZ         | CORDOBA         | 31/10/19 | GESPA        | 540 | E1 | 39 |
| 1016 | GUAYAQUIL      | BOGOTA          | 31/10/19 | UGUPI        | 60  | E1 | 20 |
| 1017 | GUAYAQUIL      | BOGOTA          | 31/10/19 | PULTU        | 60  | E2 | 22 |
| 1018 | BOGOTA         | PANAMA          | 31/10/19 | OGLUT        | 0   | E2 | 27 |
| 1019 | GUAYAQUIL      | BOGOTA          | 01/11/19 | BOKAN        | 0   | E2 | 22 |
| 1020 | BOGOTA         | GUAYAQUIL       | 01/11/19 | ANGEL        | 90  | E2 | 39 |
| 1021 | GUAYAQUIL      | BOGOTA          | 01/11/19 | ENSOL        | 60  | E2 | 22 |
| 1022 | GUAYAQUIL      | BOGOTA          | 03/11/19 | UGUPI        | 0   | E2 | 25 |
| 1023 | GUAYAQUIL      | BOGOTA          | 03/11/19 | UGUPI        | 0   | E2 | 25 |
| 1024 | GUAYAQUIL      | BOGOTA          | 03/11/19 | UGUPI        | 0   | E2 | 25 |
| 1025 | GUAYAQUIL      | BOGOTA          | 03/11/19 | ENSOL        | 0   | E2 | 22 |

|      |                 |              |          |       |     |    |    |
|------|-----------------|--------------|----------|-------|-----|----|----|
| 1027 | GUAYAQUIL       | BOGOTA       | 03/11/19 | ANRAX | 0   | E2 | 22 |
| 1028 | GUAYAQUIL       | BOGOTA       | 03/11/19 | UGUPI | 0   | E2 | 25 |
| 1029 | GUAYAQUIL       | BOGOTA       | 03/11/19 | UGUPI | 0   | E2 | 25 |
| 1030 | AMAZONICA       | LA PAZ       | 04/11/19 | EROGI | 60  | E1 | 18 |
| 1031 | GUAYAQUIL       | BOGOTA       | 04/11/19 | ANRAX | 60  | E1 | 18 |
| 1032 | GUAYAQUIL       | BOGOTA       | 04/11/19 | ANGEL | 60  | E2 | 22 |
| 1033 | BOGOTA          | GUAYAQUIL    | 05/11/19 | BOKAN | 60  | E1 | 18 |
| 1034 | LIMA            | BOGOTA       | 05/11/19 | ROLUS | 60  | E2 | 22 |
| 1035 | AMAZONICA       | RECIFE       | 06/11/19 | OBLEV | 60  | E1 | 18 |
| 1036 | CORDOBA         | EZEIZA       | 06/11/19 | GAVAM | 900 | E1 | 34 |
| 1037 | SAN JUAN        | MAIQUETIA    | 06/11/19 | ARMUR | 120 | E1 | 26 |
| 1038 | ST. DOMINGO     | CURAZAO      | 07/11/19 | VESKA | 60  | E1 | 13 |
| 1039 | CORDOBA         | ANTOFAGASTA  | 09/11/19 | KONRI | 60  | E2 | 17 |
| 1040 | LA PAZ          | LIMA         | 09/11/19 | ELAKO | 90  | E1 | 31 |
| 1041 | GUAYAQUIL       | BOGOTA       | 09/11/19 | UGUPI | 60  | E1 | 20 |
| 1042 | GUAYAQUIL       | BOGOTA       | 10/11/19 | UGUPI | 60  | E1 | 20 |
| 1044 | GUAYAQUIL       | LIMA         | 10/11/19 | VAKUD | 60  | E2 | 22 |
| 1046 | ANTOFAGASTA     | LA PAZ       | 10/11/19 | EMPEX | 0   | E2 | 17 |
| 1047 | AMAZONICA       | BRASILIA     | 10/11/19 | TOPAM | 60  | E2 | 22 |
| 1048 | AMAZONICA       | BRASILIA     | 10/11/19 | MASVA | 60  | E1 | 18 |
| 1049 | CORDOBA         | LA PAZ       | 11/11/19 | PUBUM | 90  | E1 | 31 |
| 1050 | MAIQUETIA       | BARRANQUILLA | 11/11/19 | GILGA | 30  | E2 | 17 |
| 1051 | LIMA            | LA PAZ       | 11/11/19 | ELAKO | 90  | E2 | 39 |
| 1052 | GUAYAQUIL       | BOGOTA       | 12/11/19 | UGUPI | 60  | E1 | 20 |
| 1053 | BOGOTA          | GUAYAQUIL    | 13/11/19 | UGUPI | 60  | E2 | 25 |
| 1054 | CORDOBA         | LA PAZ       | 13/11/19 | PUPON | 90  | E1 | 31 |
| 1055 | ST. DOMINGO     | CURAZAO      | 13/11/19 | PALAS | 60  | E2 | 17 |
| 1056 | ST. DOMINGO     | CURAZAO      | 13/11/19 | BEROX | 60  | E1 | 13 |
| 1058 | GUAYAQUIL       | BOGOTA       | 13/11/19 | UGUPI | 60  | E1 | 20 |
| 1059 | RESISTENCIA     | LA PAZ       | 14/11/19 | PILCO | 90  | E2 | 34 |
| 1060 | CENTRAL AMERICA | PANAMA       | 14/11/19 | TEKUG | 60  | E1 | 18 |
| 1062 | ST. DOMINGO     | CURAZAO      | 15/11/19 | BEROX | 60  | E1 | 13 |
| 1063 | ST. DOMINGO     | CURAZAO      | 15/11/19 | VESKA | 60  | E1 | 13 |
| 1064 | ST. DOMINGO     | CURAZAO      | 15/11/19 | KARUM | 60  | E1 | 13 |
| 1065 | RESISTENCIA     | MONTEVIDEO   | 15/11/19 | MCS   | 60  | E1 | 13 |
| 1066 | CORDOBA         | LA PAZ       | 16/11/19 | PUBUM | 90  | E2 | 39 |
| 1067 | LIMA            | LA PAZ       | 16/11/19 | ORALO | 60  | E1 | 18 |
| 1069 | CORDOBA         | LA PAZ       | 17/11/19 | PUBUM | 90  | E1 | 31 |
| 1070 | AMAZONICA       | BOGOTA       | 17/11/19 | ASAPA | 60  | E2 | 22 |
| 1071 | AMAZONICA       | BOGOTA       | 17/11/19 | ASAPA | 60  | E2 | 22 |
| 1072 | AMAZONICA       | BOGOTA       | 17/11/19 | ASAPA | 60  | E2 | 22 |
| 1073 | BOGOTA          | GUAYAQUIL    | 18/11/19 | VAMOS | 60  | E2 | 22 |
| 1074 | LIMA            | BOGOTA       | 19/11/19 | ILMUX | 60  | E2 | 22 |
| 1075 | BOGOTA          | GUAYAQUIL    | 19/11/19 | ANGEL | 60  | E2 | 22 |
| 1076 | AMAZONICA       | PARAMARIBO   | 20/11/19 | ACARI | 60  | E2 | 22 |
| 1077 | ANTOFAGASTA     | LA PAZ       | 20/11/19 | VAGUR | 60  | E2 | 17 |
| 1078 | ST. DOMINGO     | CURAZAO      | 20/11/19 | POKAK | 60  | E1 | 13 |
| 1079 | GUAYAQUIL       | BOGOTA       | 20/11/19 | UGUPI | 60  | E2 | 25 |
| 1080 | CORDOBA         | LA PAZ       | 21/11/19 | PUBUM | 90  | E2 | 39 |
| 1081 | PORT AU PRINCE  | MIAMI        | 22/11/19 | JOSES | 90  | E1 | 31 |
| 1082 | CENTRAL AMERICA | PANAMA       | 22/11/19 | AMUBI | 60  | E1 | 13 |
| 1083 | BOGOTA          | GUAYAQUIL    | 24/11/19 | UGUPI | 60  | E1 | 20 |
| 1084 | RESISTENCIA     | EZEIZA       | 25/11/19 | KORTA | 60  | E1 | 13 |
| 1085 | GUAYAQUIL       | BOGOTA       | 25/11/19 | UGUPI | 90  | E1 | 30 |
| 1086 | CORDOBA         | LA PAZ       | 26/11/19 | PUBUM | 90  | E2 | 39 |
| 1087 | CORDOBA         | LA PAZ       | 26/11/19 | PUPON | 90  | E1 | 31 |
| 1088 | LIMA            | GUAYAQUIL    | 27/11/19 | TOSES | 60  | E2 | 22 |
| 1090 | CORDOBA         | LA PAZ       | 28/11/19 | PUBUM | 90  | E2 | 39 |
| 1091 | AMAZONICA       | BOGOTA       | 29/11/19 | ASAPA | 60  | E1 | 18 |
| 1092 | BOGOTA          | GUAYAQUIL    | 29/11/19 | BOLOM | 90  | E1 | 26 |
| 1093 | BOGOTA          | PANAMA       | 30/11/19 | ILTUR | 60  | E2 | 22 |
| 1094 | AMAZONICA       | LA PAZ       | 30/11/19 | VILUX | 60  | E2 | 22 |
| 1095 | GUAYAQUIL       | BOGOTA       | 01/12/19 | UGUPI | 90  | E2 | 25 |
| 1096 | PIARCO          | PILOT        | 01/12/19 | OPADO | 90  | B  | 18 |
| 1097 | NEW YORK        | PIARCO       | 01/12/19 | FISST | 90  | E2 | 39 |
| 1098 | GUAYAQUIL       | BOGOTA       | 02/12/19 | PULTU | 60  | E1 | 18 |
| 1099 | PIARCO          | PILOT        | 02/12/19 | ILURI | 0   | D  | 13 |

|      |                |                 |          |       |    |    |    |
|------|----------------|-----------------|----------|-------|----|----|----|
| 1100 | SAN JUAN       | PIARCO          | 02/12/19 | ILURI | 90 | D  | 21 |
| 1101 | CORDOBA        | ANTOFAGASTA     | 02/12/19 | KADAT | 90 | E1 | 31 |
| 1102 | LIMA           | ANTOFAGASTA     | 02/12/19 | ESDIN | 90 | E1 | 31 |
| 1103 | CORDOBA        | LA PAZ          | 02/12/19 | PUBUM | 0  | E2 | 27 |
| 1104 | ASUNCION       | LA PAZ          | 02/12/19 | BUXOR | 60 | E1 | 18 |
| 1106 | CORDOBA        | ANTOFAGASTA     | 02/12/19 | KONRI | 0  | E2 | 27 |
| 1109 | ANTOFAGASTA    | LIMA            | 02/12/19 | IREMI | 60 | E1 | 18 |
| 1110 | ASUNCION       | RESISTENCIA     | 03/12/19 | KALOM | 60 | E1 | 13 |
| 1111 | GUAYAQUIL      | BOGOTA          | 03/12/19 | ANRAX | 60 | E1 | 18 |
| 1112 | ASUNCION       | RESISTENCIA     | 03/12/19 | KALOM | 60 | E1 | 13 |
| 1113 | GUAYAQUIL      | BOGOTA          | 03/12/19 | LIXAS | 60 | E1 | 18 |
| 1114 | RESISTENCIA    | EZEIZA          | 03/12/19 | KORTA | 60 | E2 | 17 |
| 1115 | GUAYAQUIL      | BOGOTA          | 04/12/19 | ANRAX | 60 | E2 | 22 |
| 1116 | BOGOTA         | AMAZONICA       | 04/12/19 | BRACO | 60 | E2 | 22 |
| 1117 | GUAYAQUIL      | BOGOTA          | 04/12/19 | ANRAX | 60 | E2 | 22 |
| 1118 | GUAYAQUIL      | CENTRAL AMERICA | 04/12/19 | LIXAS | 60 | E2 | 22 |
| 1119 | GUAYAQUIL      | BOGOTA          | 05/12/19 | ANRAX | 60 | E2 | 22 |
| 1121 | KINGSTON       | HABANA          | 05/12/19 | NIBEO | 60 | E1 | 18 |
| 1122 | ST. DOMINGO    | PORT AU PRINCE  | 05/12/19 | ONPAD | 0  | E1 | 13 |
| 1123 | ST. DOMINGO    | PORT AU PRINCE  | 05/12/19 | PIGBI | 0  | E1 | 13 |
| 1124 | PANAMA         | KINGSTON        | 05/12/19 | ARNAL | 60 | E1 | 18 |
| 1125 | BARRANQUILLA   | CURAZAO         | 05/12/19 | AMBAS | 0  | E1 | 13 |
| 1126 | AMAZONICA      | GEORGETOWN      | 05/12/19 | DOBDA | 60 | E1 | 18 |
| 1127 | AMAZONICA      | BOGOTA          | 05/12/19 | ARUXA | 60 | E2 | 22 |
| 1129 | ASUNCION       | RESISTENCIA     | 05/12/19 | POS   | 60 | E1 | 13 |
| 1130 | ST. DOMINGO    | PORT AU PRINCE  | 06/12/19 | ONPAD | 0  | E1 | 13 |
| 1131 | SAN JUAN       | PIARCO          | 06/12/19 | GEECE | 0  | E2 | 17 |
| 1132 | GUAYAQUIL      | CENTRAL AMERICA | 07/12/19 | LIXAS | 60 | E1 | 18 |
| 1134 | ANTOFAGASTA    | LIMA            | 08/12/19 | ISPEL | 90 | E1 | 26 |
| 1135 | CURAZAO        | ST. DOMINGO     | 09/12/19 | KARUM | 90 | E1 | 18 |
| 1136 | AMAZONICA      | LA PAZ          | 09/12/19 | ISARA | 60 | E1 | 18 |
| 1137 | AMAZONICA      | BOGOTA          | 09/12/19 | ABIDE | 60 | E2 | 22 |
| 1138 | AMAZONICA      | LA PAZ          | 09/12/19 | ISARA | 60 | E1 | 18 |
| 1139 | BOGOTA         | GUAYAQUIL       | 09/12/19 | UGUPI | 60 | E1 | 20 |
| 1141 | SAN JUAN       | PIARCO          | 09/12/19 | GEECE | 60 | E1 | 13 |
| 1142 | LIMA           | GUAYAQUIL       | 09/12/19 | VAKUD | 0  | E2 | 22 |
| 1143 | RESISTENCIA    | CORDOBA         | 09/12/19 | SIKOB | 60 | E1 | 13 |
| 1144 | GUAYAQUIL      | BOGOTA          | 09/12/19 | BOKAN | 60 | E2 | 22 |
| 1146 | AMAZONICA      | BOGOTA          | 09/12/19 | ABIDE | 60 | E2 | 22 |
| 1147 | AMAZONICA      | MAIQUETIA       | 09/12/19 | VUMPI | 60 | E1 | 18 |
| 1148 | GUAYAQUIL      | BOGOTA          | 10/12/19 | ANRAX | 60 | E2 | 22 |
| 1149 | LIMA           | GUAYAQUIL       | 10/12/19 | ARNEL | 60 | E2 | 22 |
| 1150 | GUAYAQUIL      | BOGOTA          | 10/12/19 | BOKAN | 60 | E2 | 22 |
| 1151 | AMAZONICA      | RECIFE          | 10/12/19 | DAPTA | 60 | E2 | 22 |
| 1152 | CURAZAO        | ST. DOMINGO     | 10/12/19 | KARUM | 0  | E1 | 13 |
| 1153 | LIMA           | LA PAZ          | 10/12/19 | RCO   | 60 | E2 | 27 |
| 1154 | GUAYAQUIL      | BOGOTA          | 11/12/19 | BOKAN | 45 | E2 | 22 |
| 1155 | GUAYAQUIL      | BOGOTA          | 12/12/19 | UGUPI | 60 | E2 | 25 |
| 1156 | GUAYAQUIL      | CENTRAL AMERICA | 12/12/19 | LIXAS | 60 | E2 | 22 |
| 1157 | GUAYAQUIL      | BOGOTA          | 12/12/19 | PULTU | 60 | E2 | 22 |
| 1158 | GUAYAQUIL      | CENTRAL AMERICA | 12/12/19 | LIXAS | 60 | E1 | 18 |
| 1159 | GUAYAQUIL      | LIMA            | 13/12/19 | ARNEL | 60 | E2 | 22 |
| 1161 | CURAZAO        | SAN JUAN        | 14/12/19 | SCAPA | 0  | E1 | 13 |
| 1162 | BOGOTA         | GUAYAQUIL       | 14/12/19 | AKTAB | 60 | E1 | 18 |
| 1163 | LIMA           | BOGOTA          | 14/12/19 | ROLUS | 60 | E2 | 22 |
| 1164 | PORT AU PRINCE | ST. DOMINGO     | 14/12/19 | ETBOD | 90 | E1 | 31 |
| 1165 | GUAYAQUIL      | BOGOTA          | 15/12/19 | UGUPI | 60 | E2 | 25 |
| 1166 | GUAYAQUIL      | BOGOTA          | 15/12/19 | UGUPI | 60 | E2 | 25 |
| 1167 | ANTOFAGASTA    | LIMA            | 15/12/19 | IREMI | 60 | E2 | 22 |
| 1169 | ST. DOMINGO    | CURAZAO         | 15/12/19 | POKAK | 0  | E1 | 13 |
| 1170 | BOGOTA         | GUAYAQUIL       | 15/12/19 | BOKAN | 60 | E2 | 22 |
| 1171 | GUAYAQUIL      | BOGOTA          | 16/12/19 | BOKAN | 60 | E1 | 18 |
| 1173 | GUAYAQUIL      | BOGOTA          | 16/12/19 | ENSOL | 60 | E1 | 18 |
| 1175 | CURITIBA       | PILOTO          | 16/12/19 | SINIL | 60 | I  | 14 |
| 1176 | KINGSTON       | CURAZAO         | 16/12/19 | AMBIN | 60 | E1 | 18 |
| 1177 | GUAYAQUIL      | LIMA            | 16/12/19 | ARNEL | 60 | E2 | 22 |
| 1179 | AMAZONICA      | LA PAZ          | 17/12/19 | UBKAB | 60 | E2 | 22 |

|      |                |                |          |       |    |    |    |
|------|----------------|----------------|----------|-------|----|----|----|
| 1180 | AMAZONICA      | MAIQUETIA      | 17/12/19 | POVLA | 60 | E1 | 18 |
| 1181 | PORT AU PRINCE | KINGSTON       | 17/12/19 | KEBET | 90 | E1 | 31 |
| 1182 | KINGSTON       | PANAMA         | 17/12/19 | ARNAL | 60 | E1 | 18 |
| 1183 | PANAMA         | BOGOTA         | 17/12/19 | IVROS | 5  | E1 | 13 |
| 1184 | GUAYAQUIL      | BOGOTA         | 18/12/19 | PULTU | 60 | E2 | 22 |
| 1185 | AMAZONICA      | MAIQUETIA      | 18/12/19 | UGAGA | 60 | E2 | 22 |
| 1186 | AMAZONICA      | MAIQUETIA      | 18/12/19 | AKPEP | 60 | E1 | 18 |
| 1187 | AMAZONICA      | BOGOTA         | 18/12/19 | ASAPA | 60 | E1 | 18 |
| 1188 | PIARCO         | MAIQUETIA      | 18/12/19 | ITEGO | 0  | E1 | 18 |
| 1189 | BOGOTA         | GUAYAQUIL      | 19/12/19 | ANRAX | 60 | E2 | 22 |
| 1190 | PANAMA         | BOGOTA         | 19/12/19 | DAKMO | 90 | E2 | 39 |
| 1191 | AMAZONICA      | BOGOTA         | 19/12/19 | ASAPA | 60 | E1 | 18 |
| 1192 | AMAZONICA      | LA PAZ         | 20/12/19 | SMT   | 60 | E2 | 22 |
| 1193 | ST. DOMINGO    | PORT AU PRINCE | 20/12/19 | PIGBI | 0  | E1 | 13 |
| 1195 | PORT AU PRINCE | HABANA         | 21/12/19 | URLAM | 90 | E1 | 31 |
| 1196 | AMAZONICA      | LIMA           | 21/12/19 | LIMPO | 60 | E1 | 18 |
| 1197 | LA PAZ         | AMAZONICO      | 21/12/19 | KILEV | 60 | E1 | 23 |
| 1198 | GUAYAQUIL      | BOGOTA         | 22/12/19 | UGUPI | 60 | E1 | 20 |
| 1199 | CURAZAO        | ST. DOMINGO    | 22/12/19 | KARUM | 0  | E1 | 13 |
| 1201 | LIMA           | GUAYAQUIL      | 23/12/19 | LOBOT | 60 | E2 | 22 |
| 1202 | AMAZONICA      | BOGOTA         | 23/12/19 | ABIDE | 60 | E2 | 22 |
| 1204 | ST. DOMINGO    | PORT AU PRINCE | 23/12/19 | PIGBI | 0  | E1 | 13 |
| 1206 | ST. DOMINGO    | PORT AU PRINCE | 24/12/19 | DCR   | 0  | E1 | 13 |
| 1207 | BOGOTA         | GUAYAQUIL      | 25/12/19 | AKTAB | 60 | E1 | 18 |
| 1208 | AMAZONICA      | BOGOTA         | 25/12/19 | ARUXA | 60 | E1 | 18 |
| 1209 | LA PAZ         | CORDOBA        | 25/12/19 | GAXOK | 90 | E1 | 31 |
| 1211 | LIMA           | GUAYAQUIL      | 26/12/19 | ANPAL | 60 | E2 | 22 |
| 1212 | BOGOTA         | GUAYAQUIL      | 26/12/19 | BOKAN | 60 | E2 | 22 |
| 1213 | ASUNCION       | RESISTENCIA    | 26/12/19 | REPAM | 60 | E1 | 13 |
| 1214 | PORT AU PRINCE | HABANA         | 27/12/19 | DEPSI | 60 | E2 | 17 |
| 1216 | ST. DOMINGO    | CURAZAO        | 27/12/19 | KISAS | 0  | E1 | 13 |
| 1217 | GUAYAQUIL      | BOGOTA         | 28/12/19 | PULTU | 60 | E1 | 18 |
| 1219 | AMAZONICA      | LA PAZ         | 29/12/19 | KILEV | 60 | E1 | 18 |
| 1220 | BOGOTA         | GUAYAQUIL      | 29/12/19 | UGUPI | 60 | E1 | 20 |
| 1221 | PANAMA         | BOGOTA         | 30/12/19 | ILTUR | 7  | E1 | 18 |
| 1222 | PORT AU PRINCE | HABANA         | 30/12/19 | DEPSI | 60 | E1 | 13 |
| 1223 | GUAYAQUIL      | BOGOTA         | 30/12/19 | UGUPI | 60 | E1 | 20 |
| 1224 | PANAMA         | BOGOTA         | 31/12/19 | BUXOS | 12 | E1 | 23 |
| 1225 | GUAYAQUIL      | BOGOTA         | 31/12/19 | PULTU | 60 | E2 | 22 |