



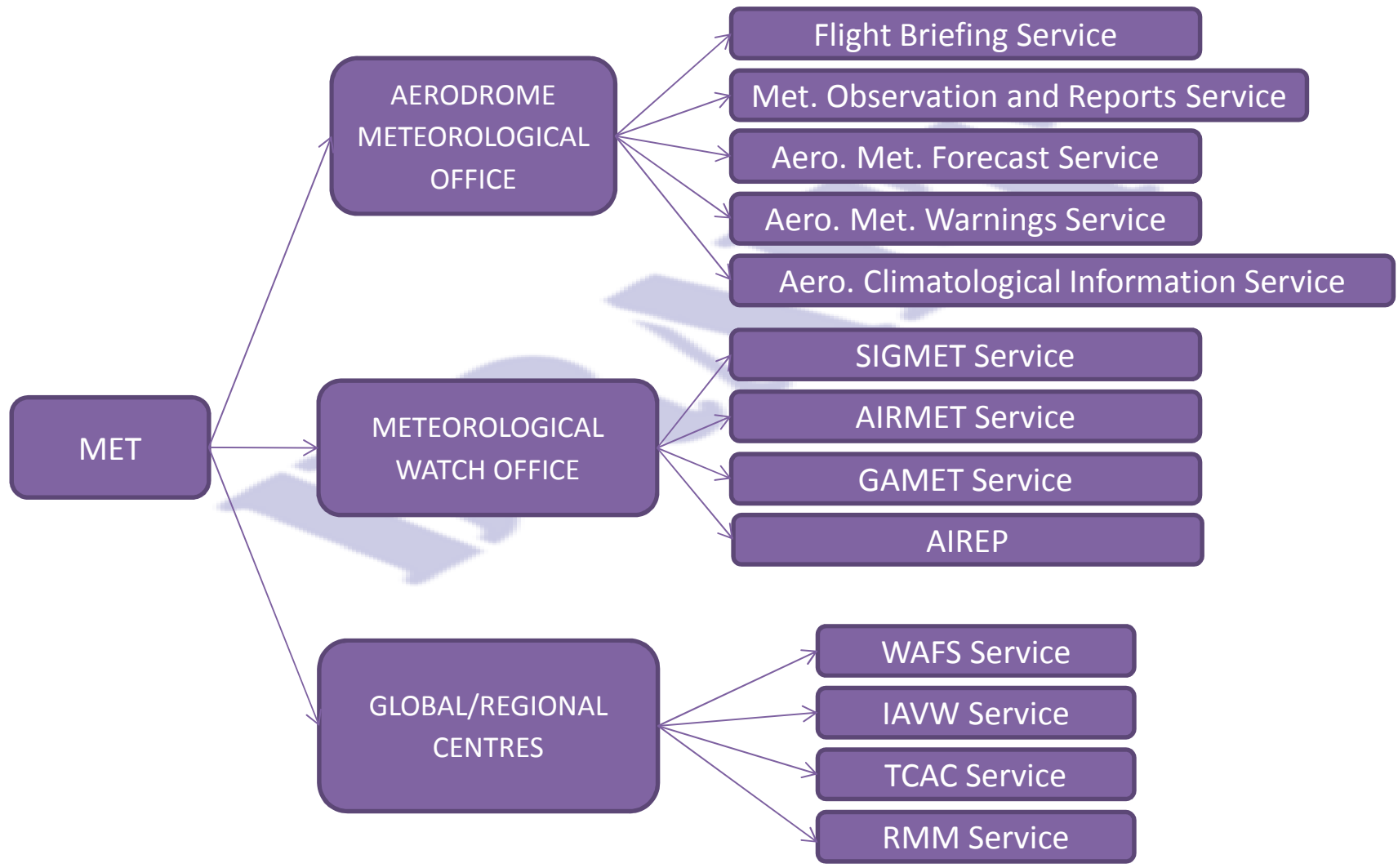
# Basic Building Block (BBB) Framework

DRAFT MAY 2018

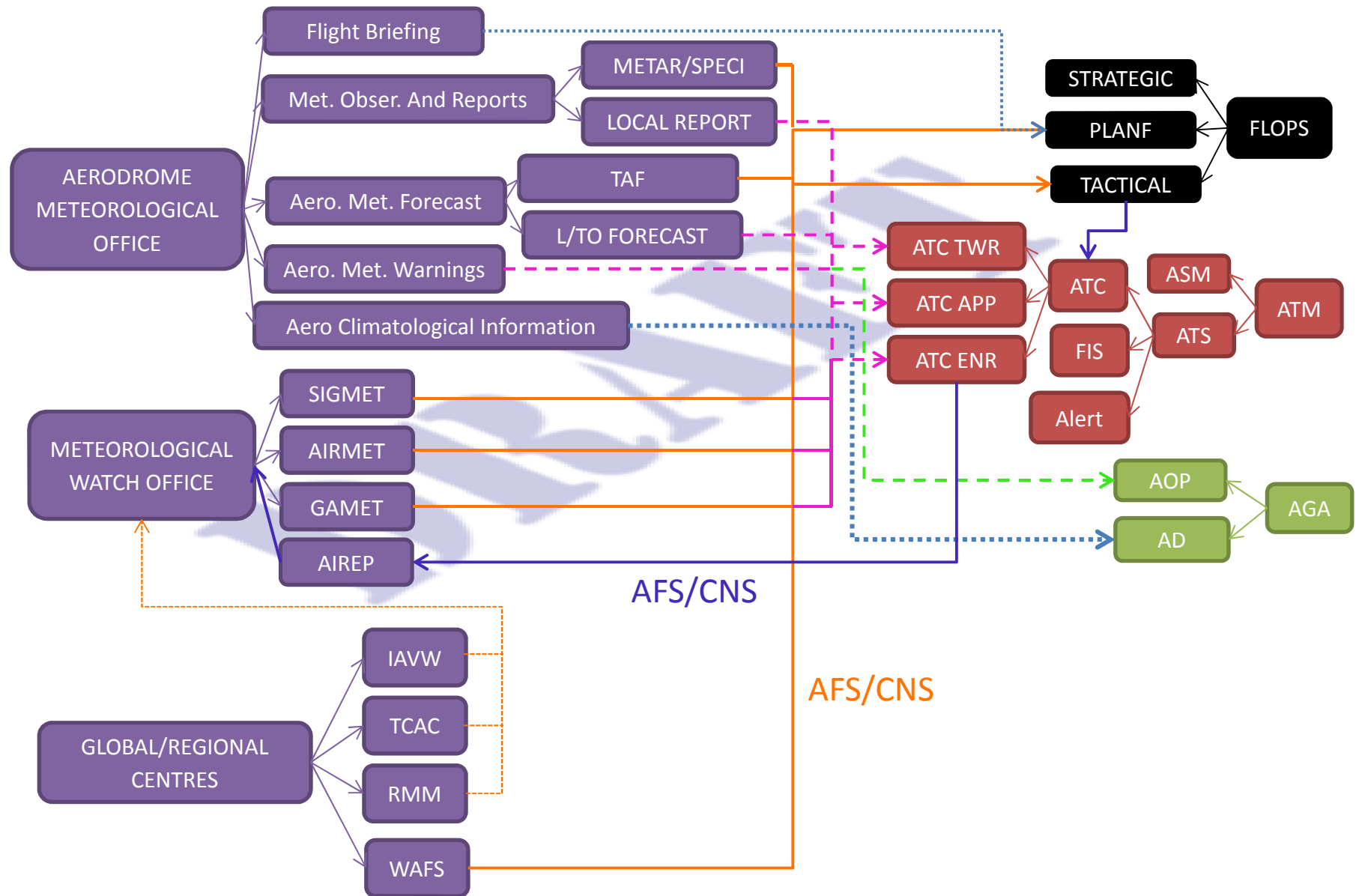
**METEOROLOGY**

**DISSENT**

# MET BASIC MODULES AND ELEMENTS

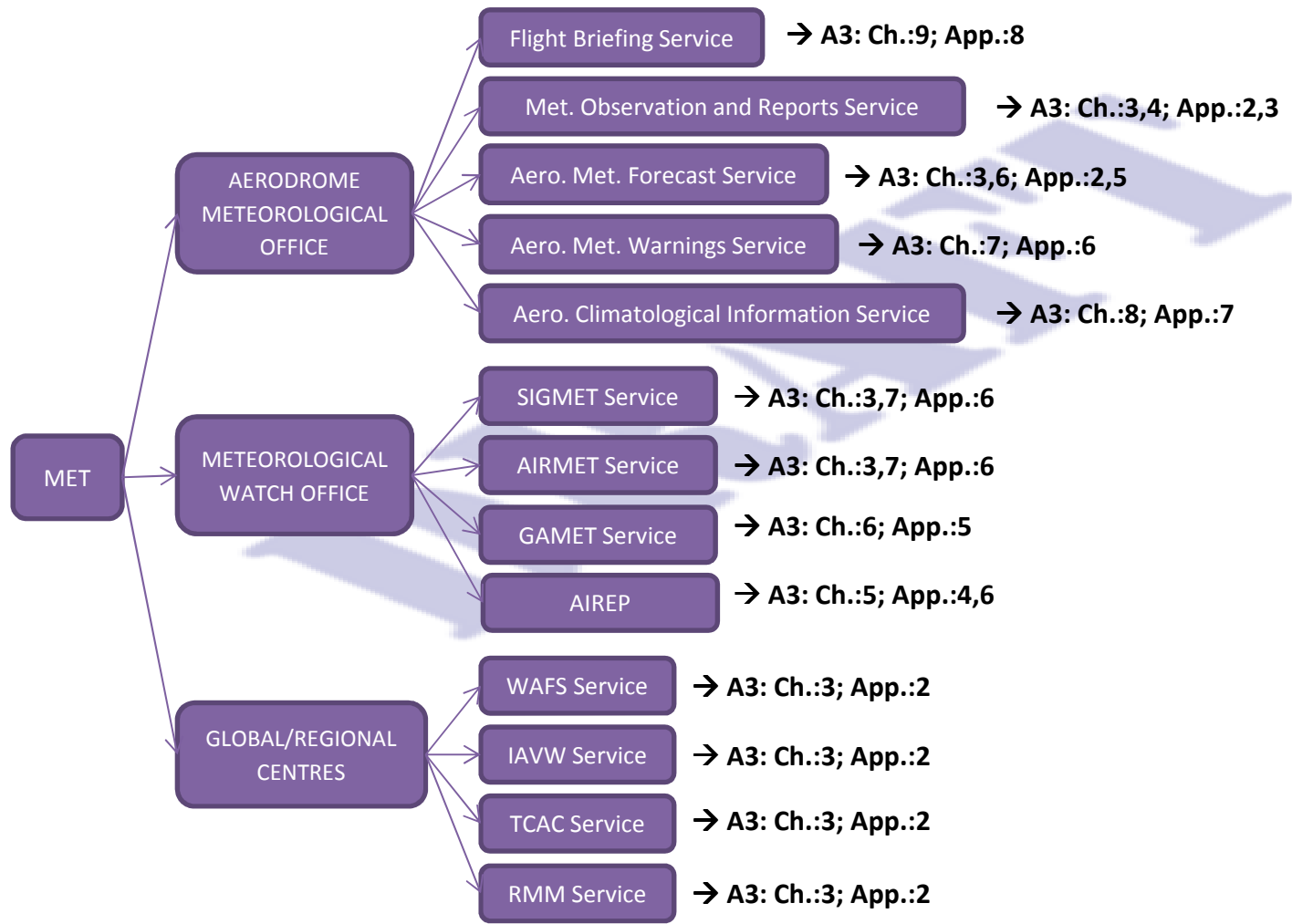


# MET SUPPORT & END USERS



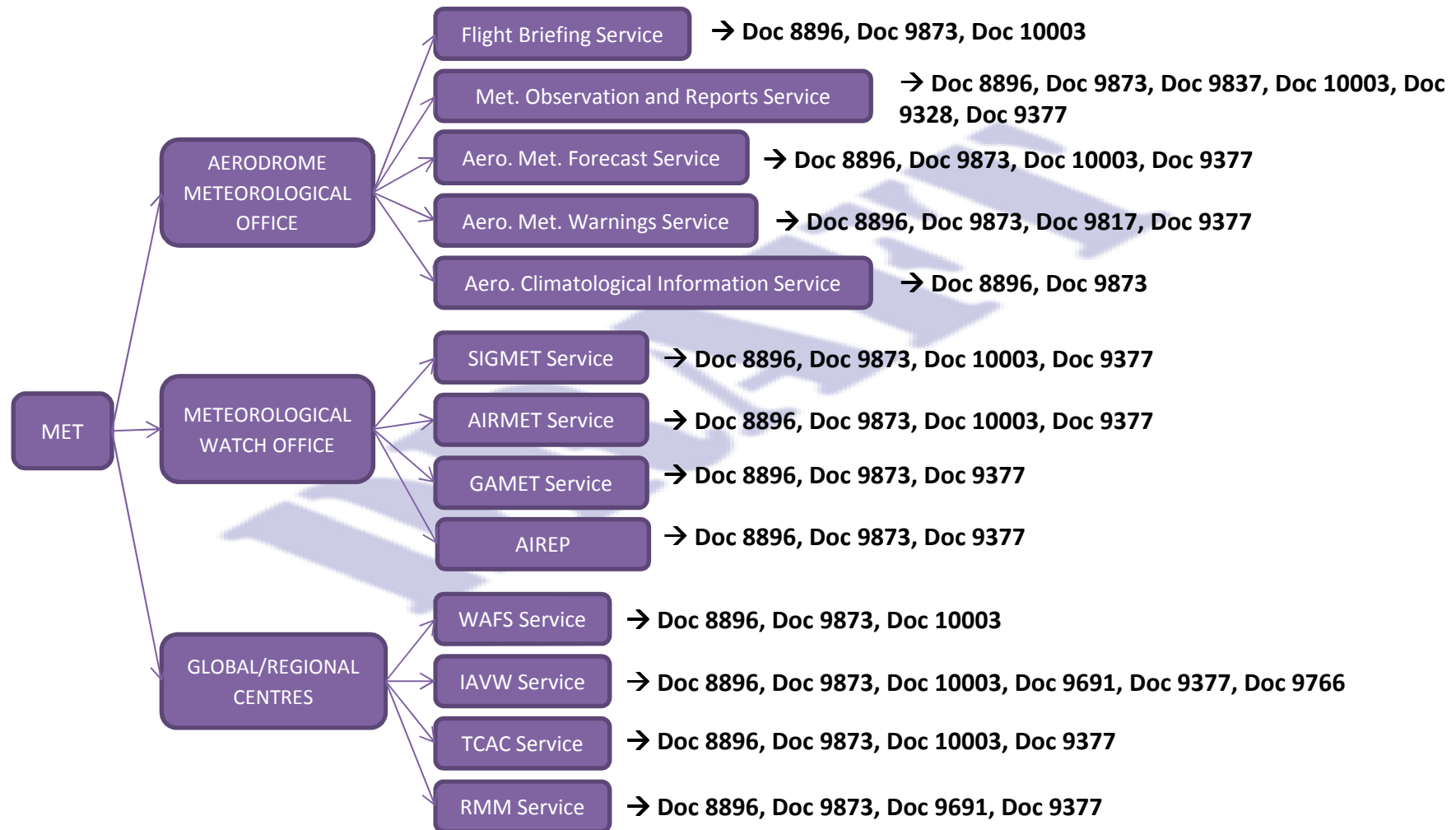
# MET BASIC ELEMENTS/REFERENCES

## ICAO SARP<sub>s</sub>



# MET BASIC ELEMENTS/REFERENCES

## GUIDANCE MATERIAL



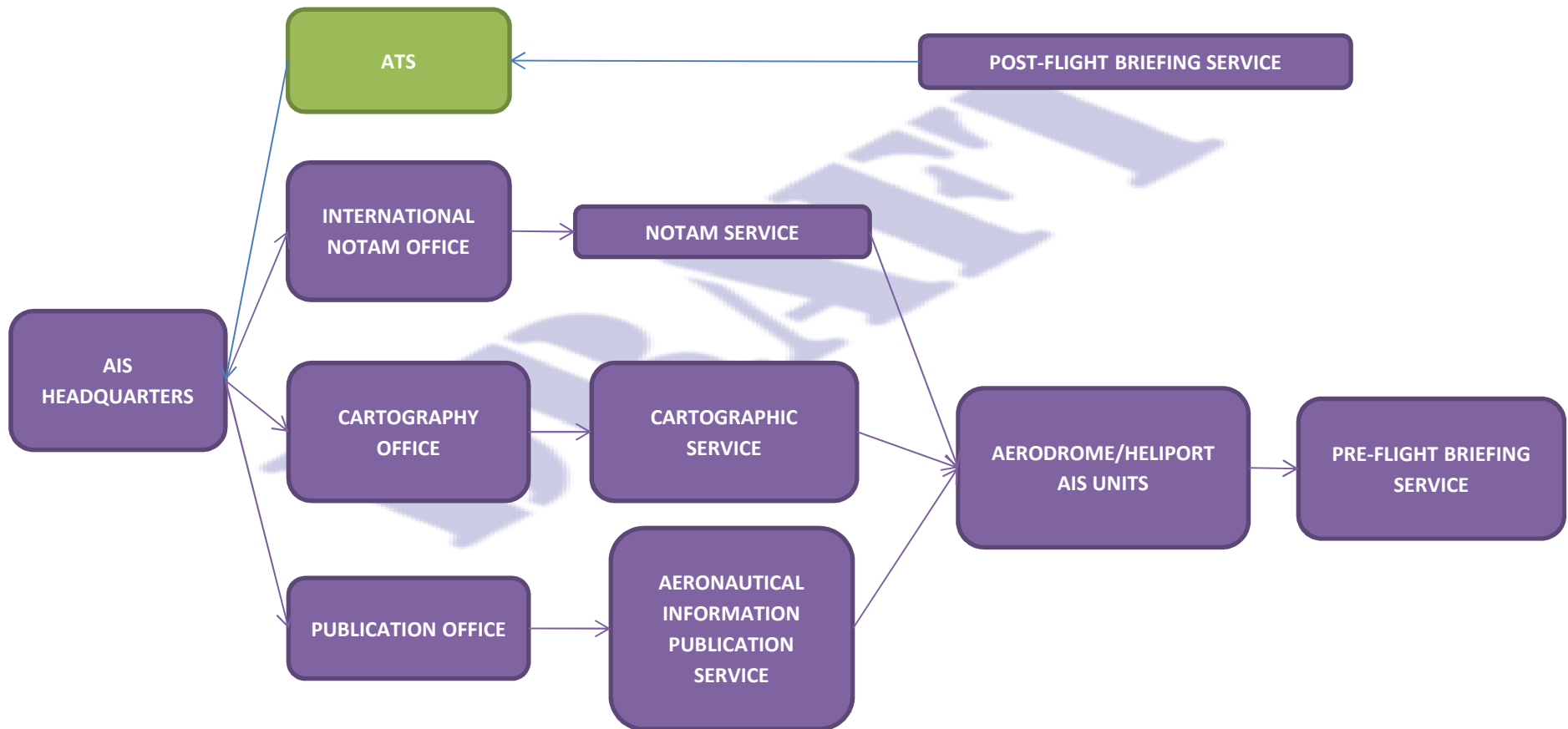
# MET References

- Annex 3: Meteorological Service for International Air Navigation
- Doc 8896: Manual of Aeronautical Meteorological Practice
- Doc 9873: Manual on the Quality Management System for the Provision of Meteorological Service to International Air Navigation
- Doc 9837: Manual on Automatic Meteorological Observing Systems at Aerodromes
- Doc 10003: Manual on the Digital Exchange of Aeronautical Meteorological Information
- Doc 9817: Manual on Low-level Wind Shear
- Doc 9691: Manual on Volcanic Ash, Radioactive Material and Toxic Chemical Clouds
- Doc 9328: Manual of Runway Visual Range Observing and Reporting Practices
- Doc 9377: Manual on Coordination between Air Traffic Services, Aeronautical Information Services and Aeronautical Meteorological Services
- Doc 9766: Handbook on the International Airways Volcano Watch (IAVW) — Operational Procedures and Contact List

# AERONAUTICAL INFORMATION



# AIS BASIC MODULES AND ELEMENTS

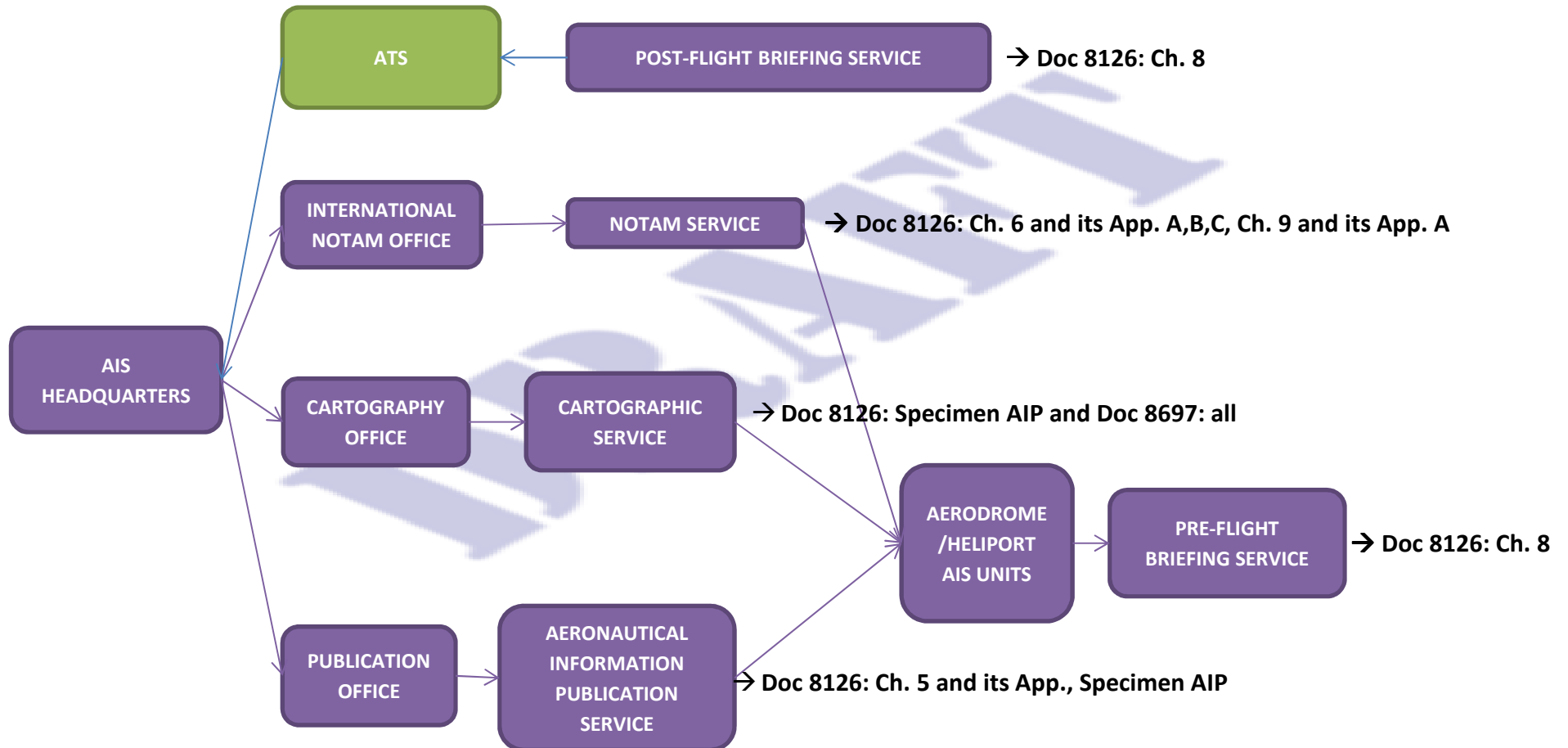








# AIS BASIC ELEMENTS/REFERENCES ICAO Guidance

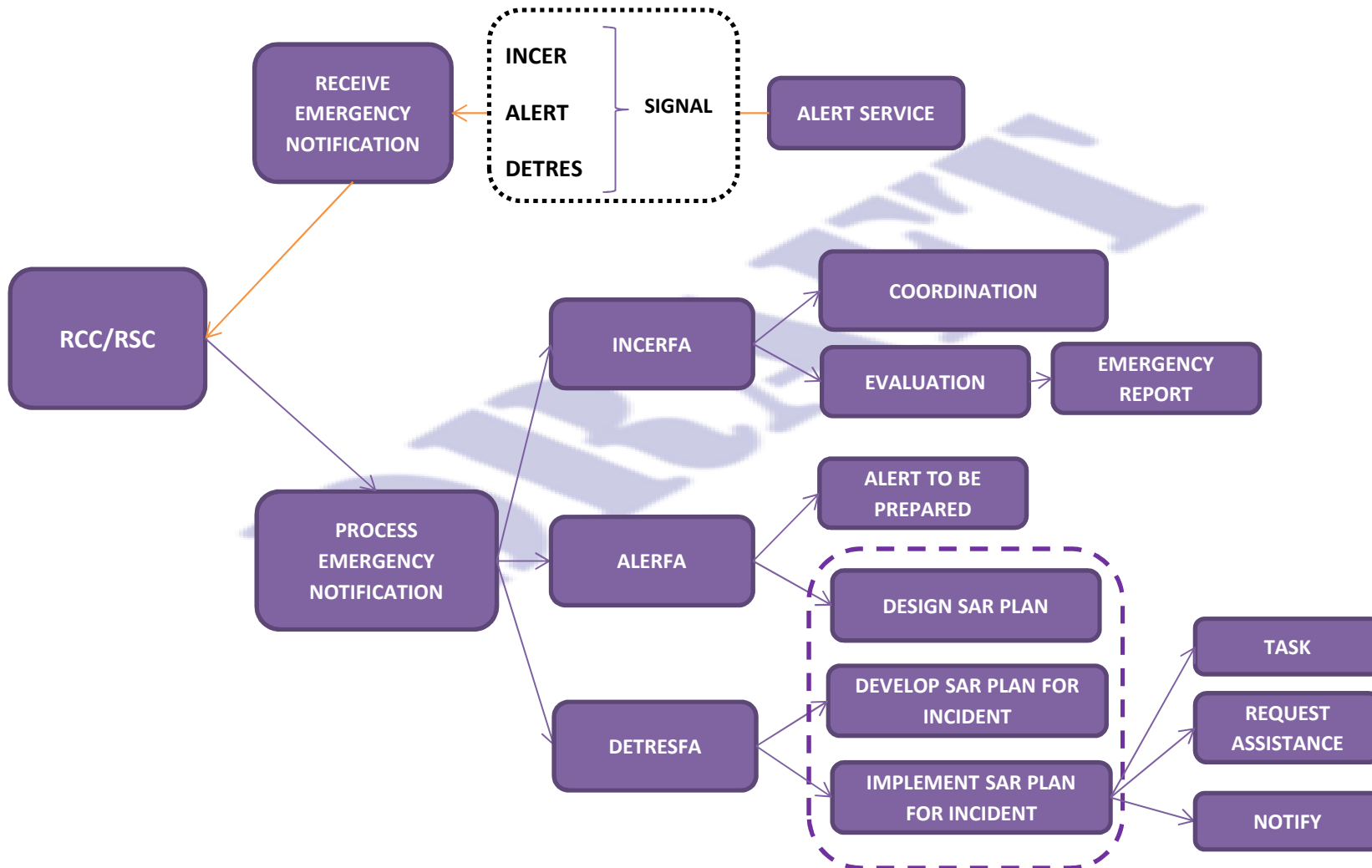


# AIS References

- Annex 15: Aeronautical Information Services
- Annex 4: Aeronautical Charts
- PANS-AIM (Doc 10066): Aeronautical Information Management
- PANS-OPS (Doc 8168): Aircraft Operations
- Doc 8126: Aeronautical Information Services Manual

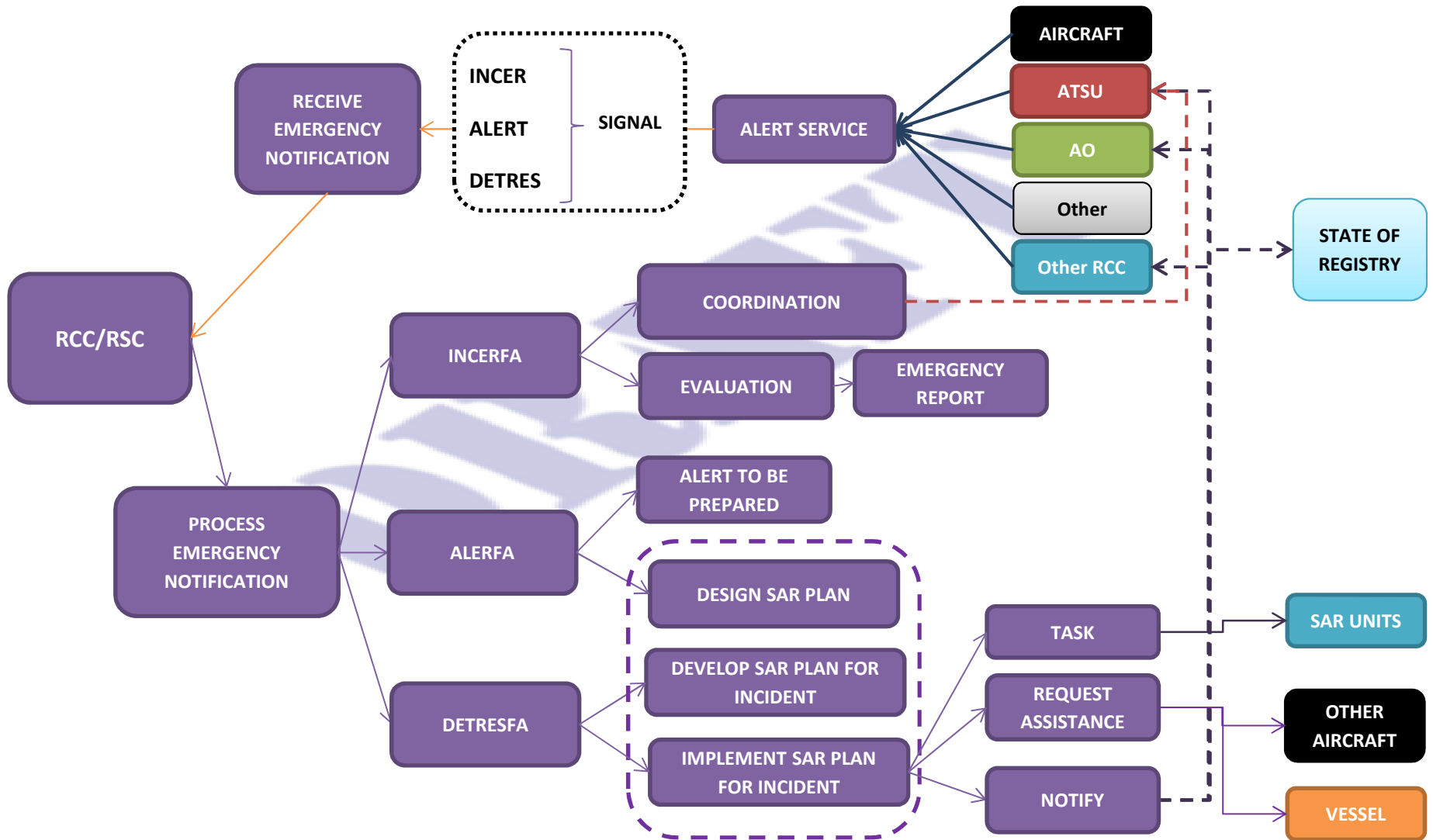
# SEARCH AND RESCUE

# SAR BASIC MODULES AND ELEMENTS

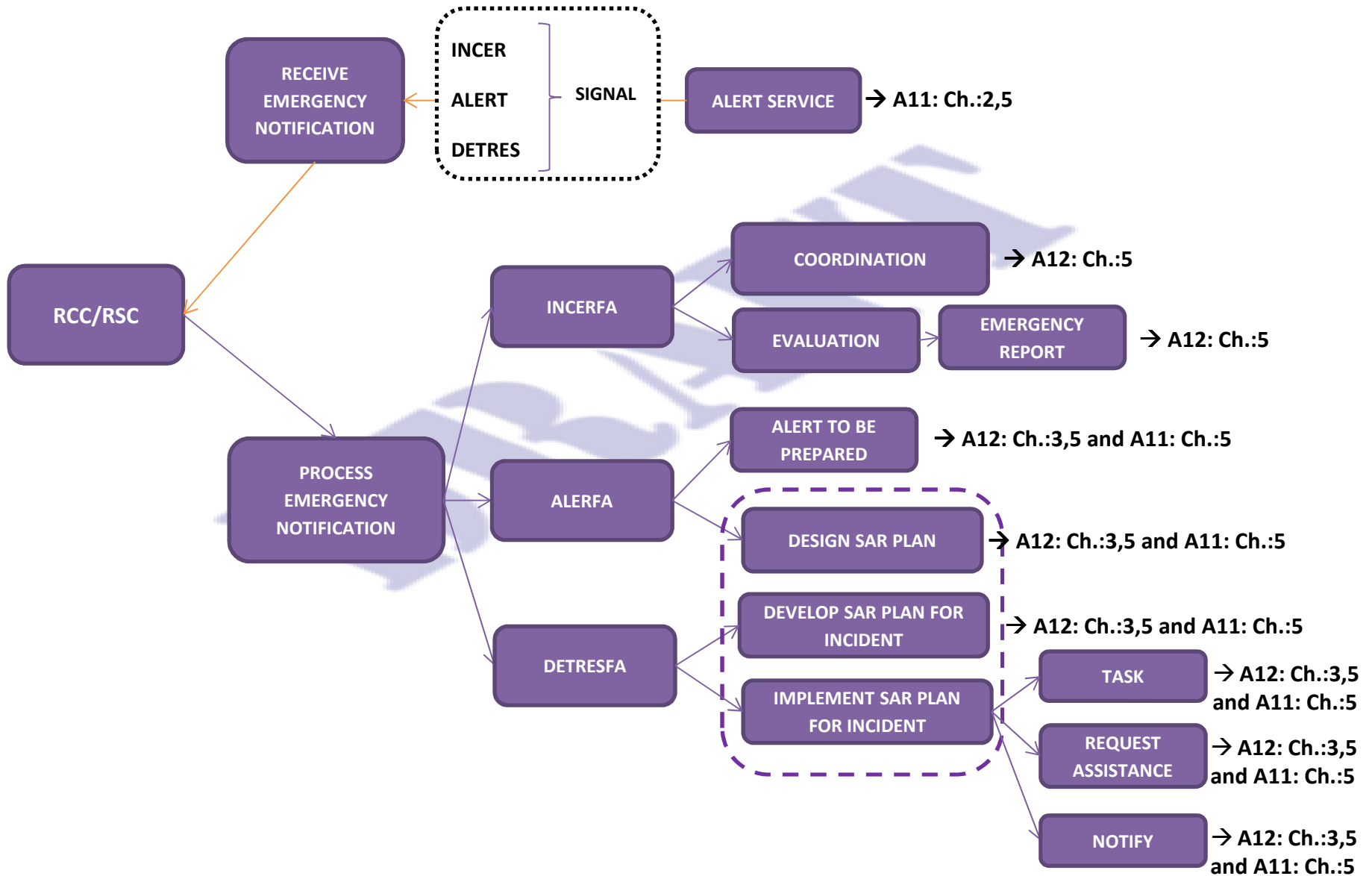




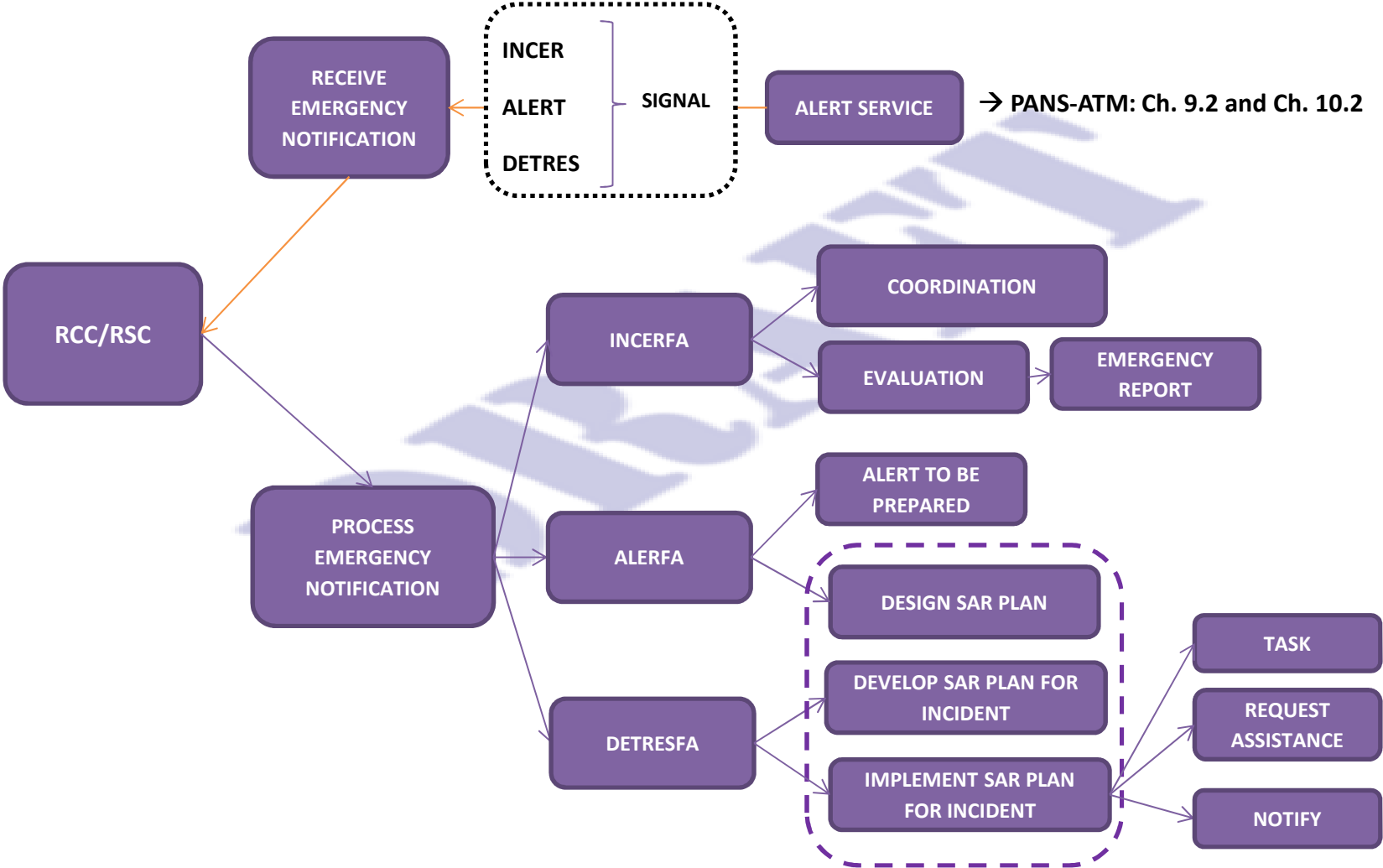
# SAR SUPPORT & END USERS



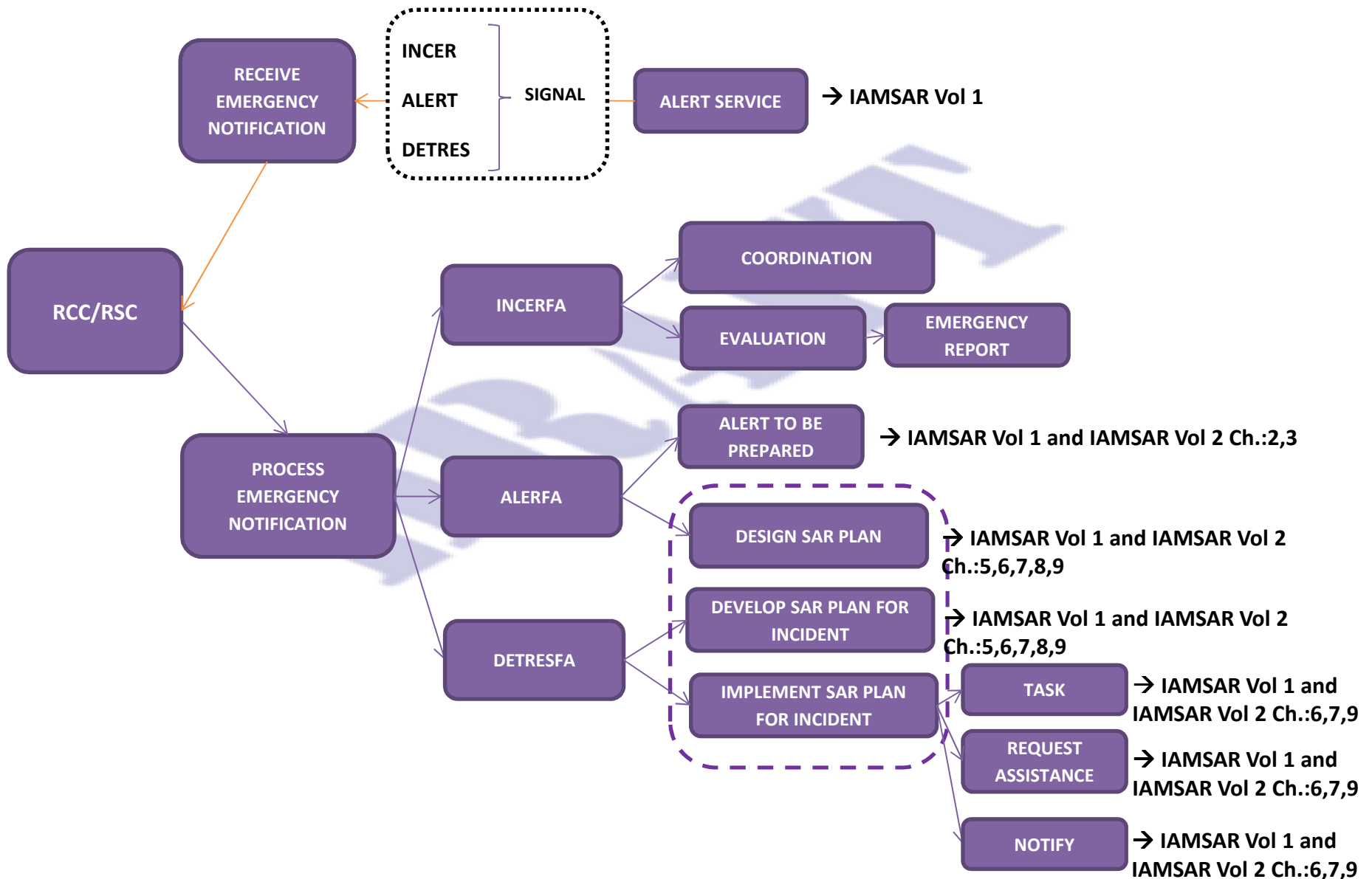
# SAR BASIC ELEMENTS/REFERENCES ICAO SARPs



# SAR BASIC ELEMENTS/REFERENCES ICAO PANS



# SAR BASIC ELEMENTS/REFERENCES ICAO GUIDANCE

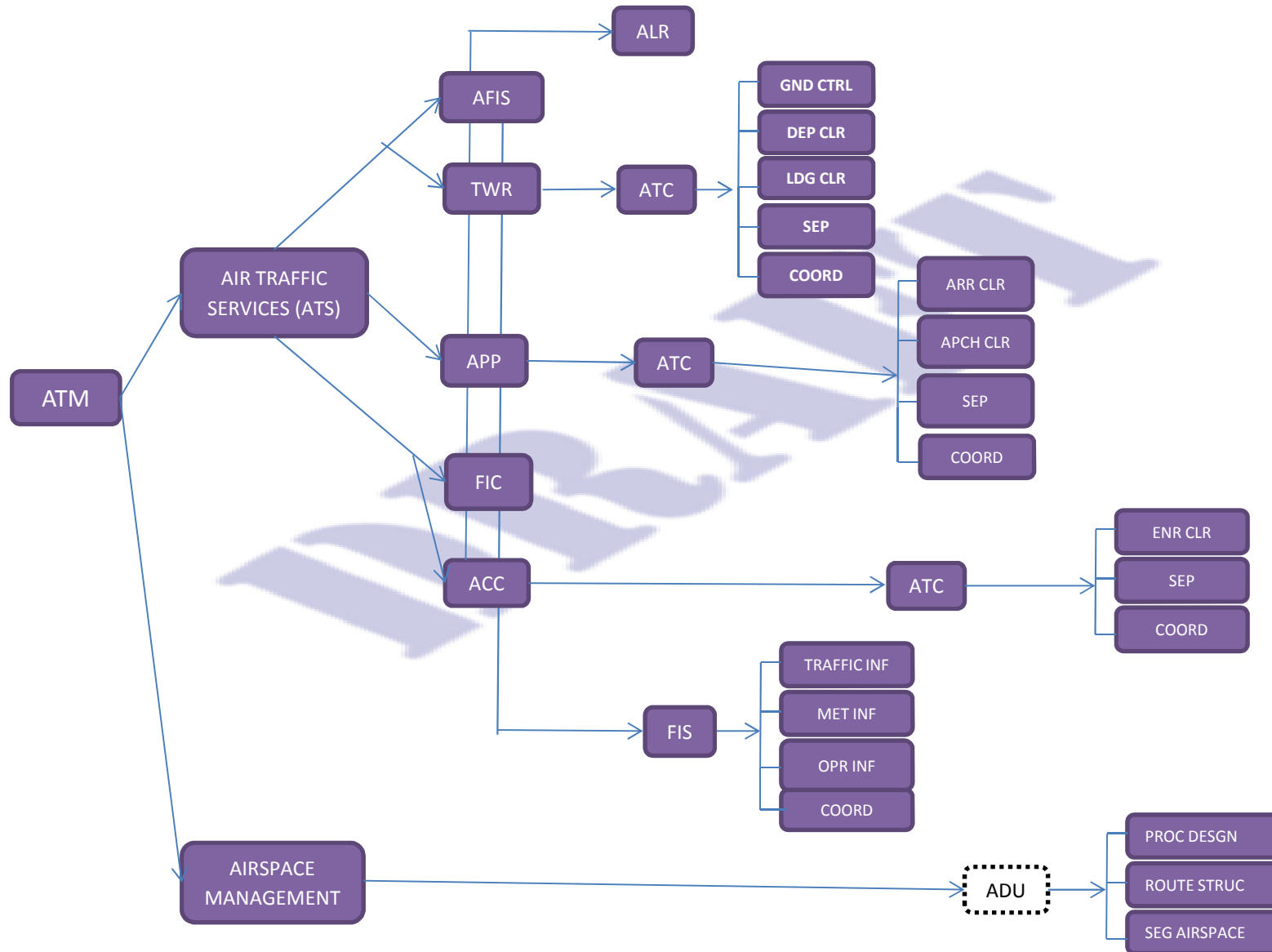


# SAR References

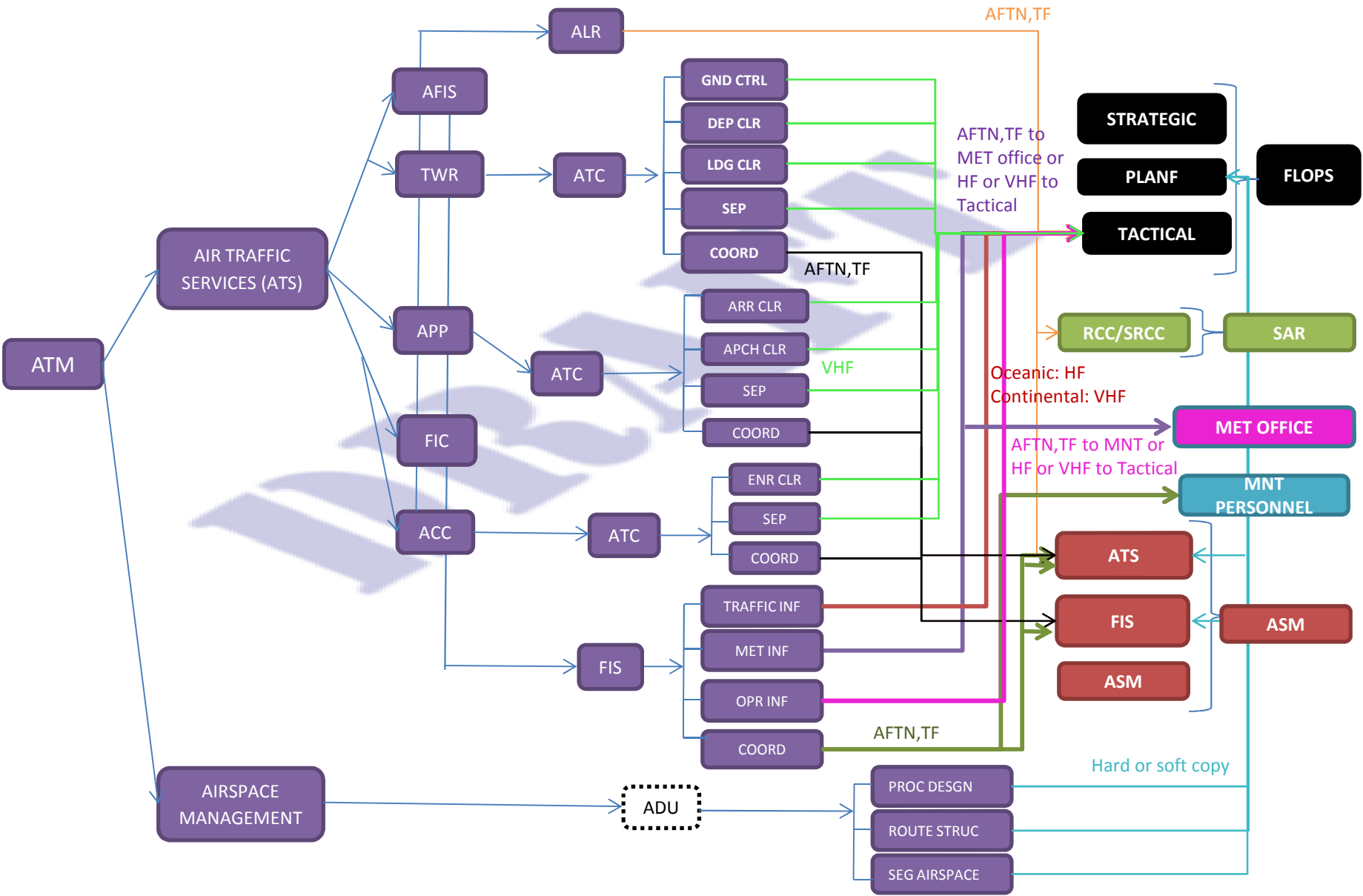
- Annex 11: Air Traffic Services
- Annex 12: Search and Rescue
- PANS-ATM (Doc 4444): Air Traffic Management
- Doc 9731: IAMSAR Manual - International Aeronautical and Maritime Search and Rescue Manual

# AIR TRAFFIC MANAGEMENT

# ATM BASIC MODULES AND ELEMENTS



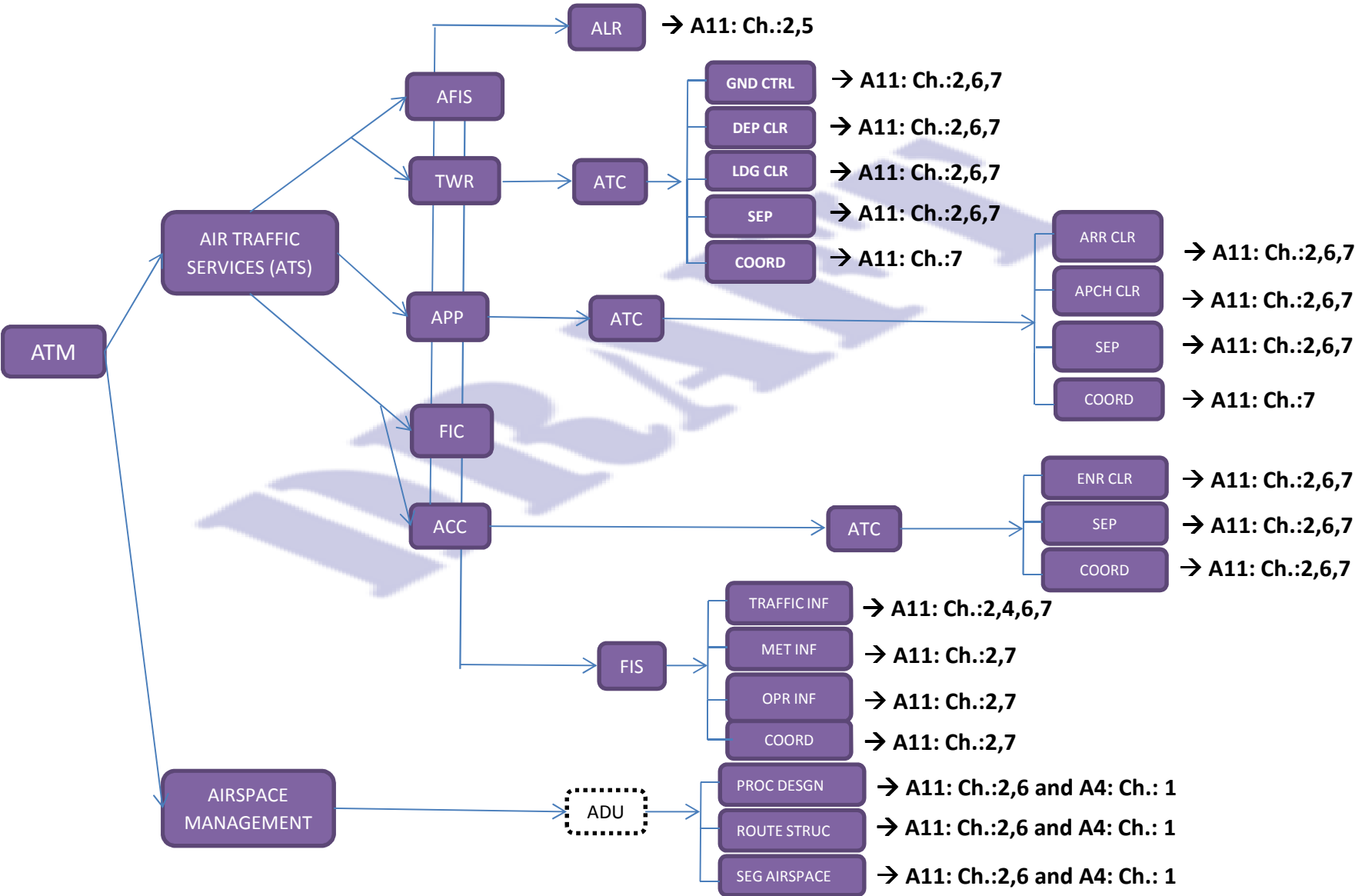
# ATM SUPPORT & END USERS





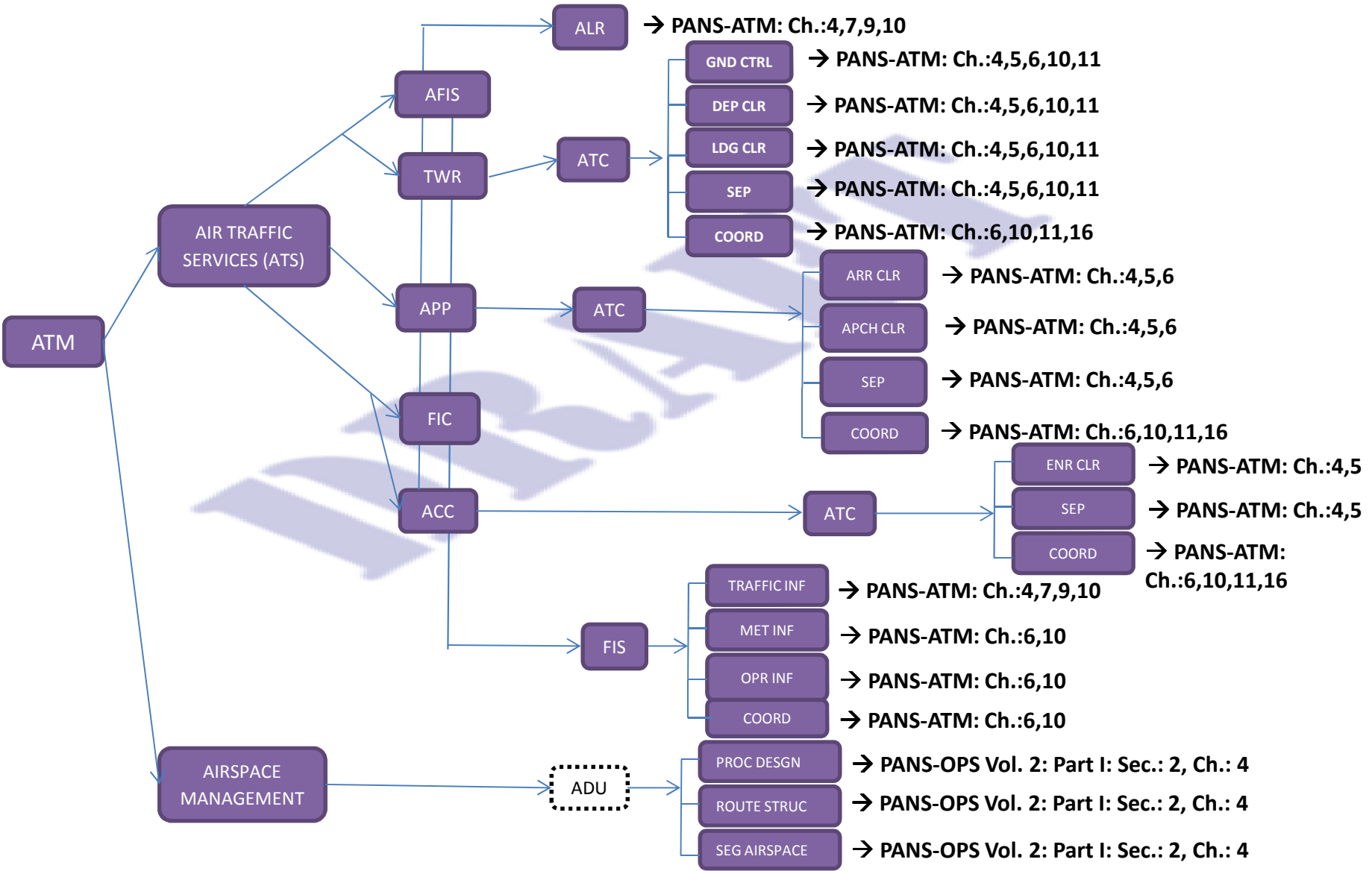
# ATM BASIC ELEMENTS/REFERENCES ICAO

## SARPs



# ATM BASIC ELEMENTS/REFERENCES ICAO

## ICAO Procedures



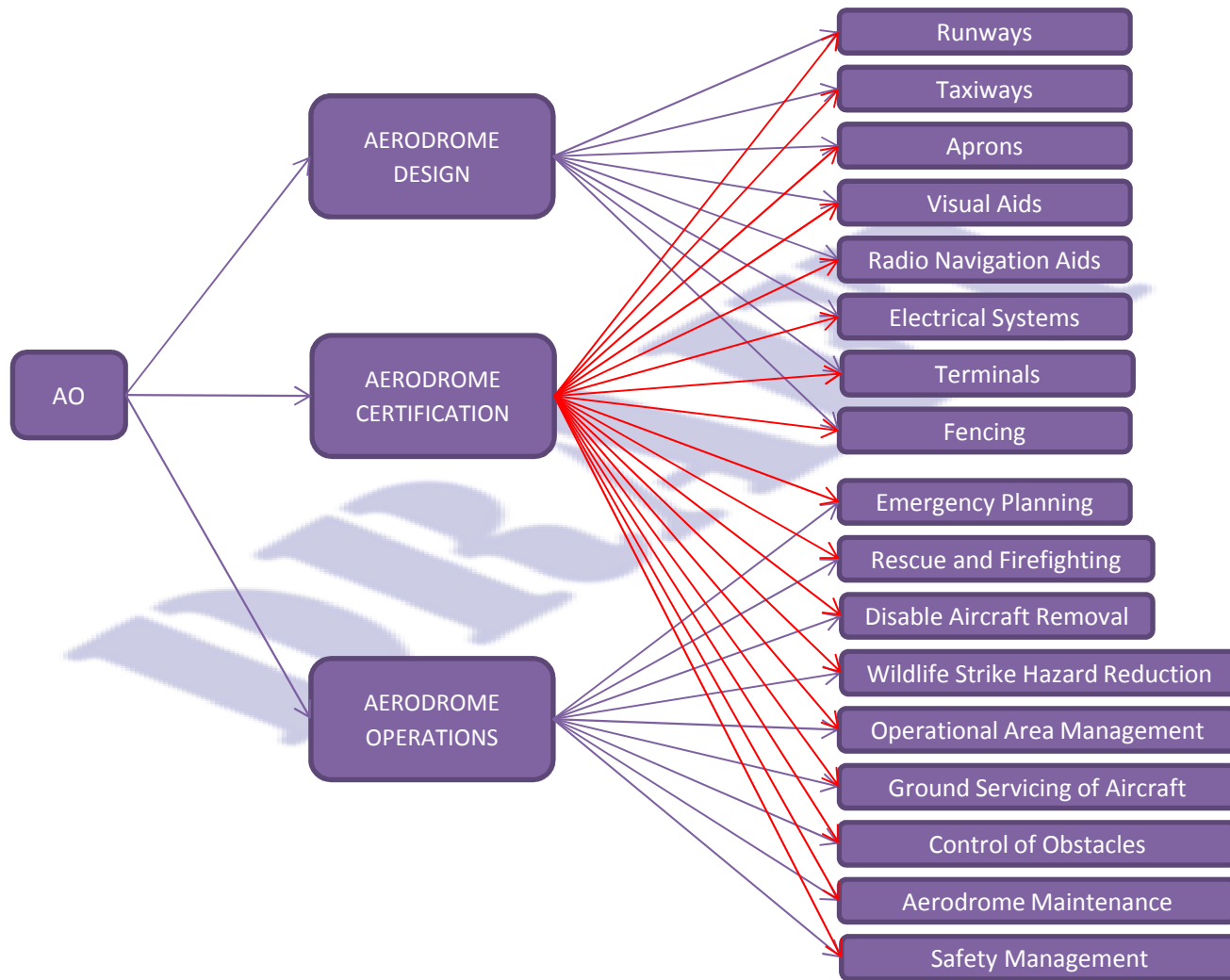
# ATM References

- Annex 11: Air Traffic Services
- Annex 4: Aeronautical Charts
- PANS-ATM (Doc 4444): Air Traffic Management
- PANS-OPS (Doc 8168): Aircraft Operations

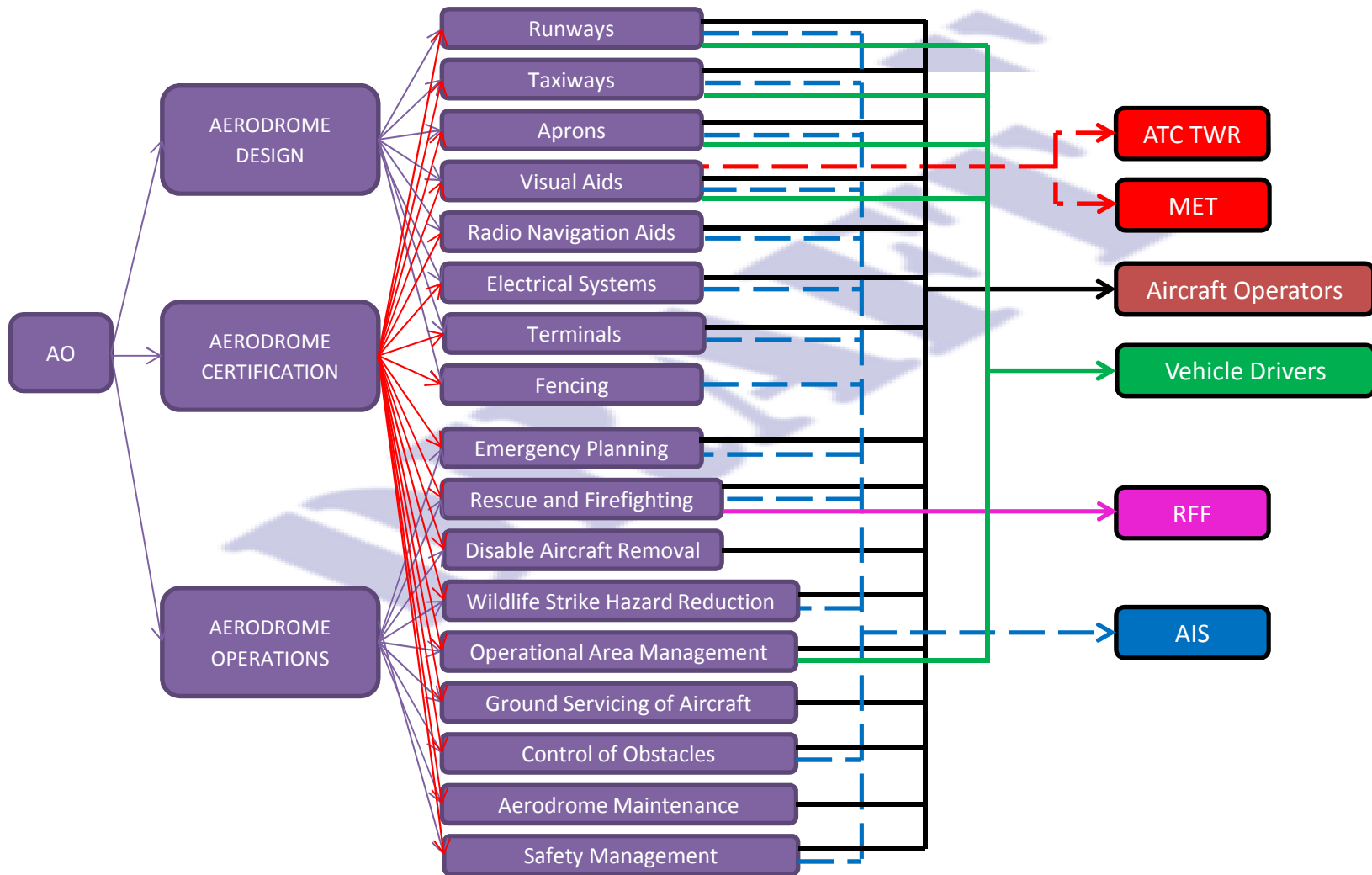


# AERODROMES/ AERODROMES OPERATIONS

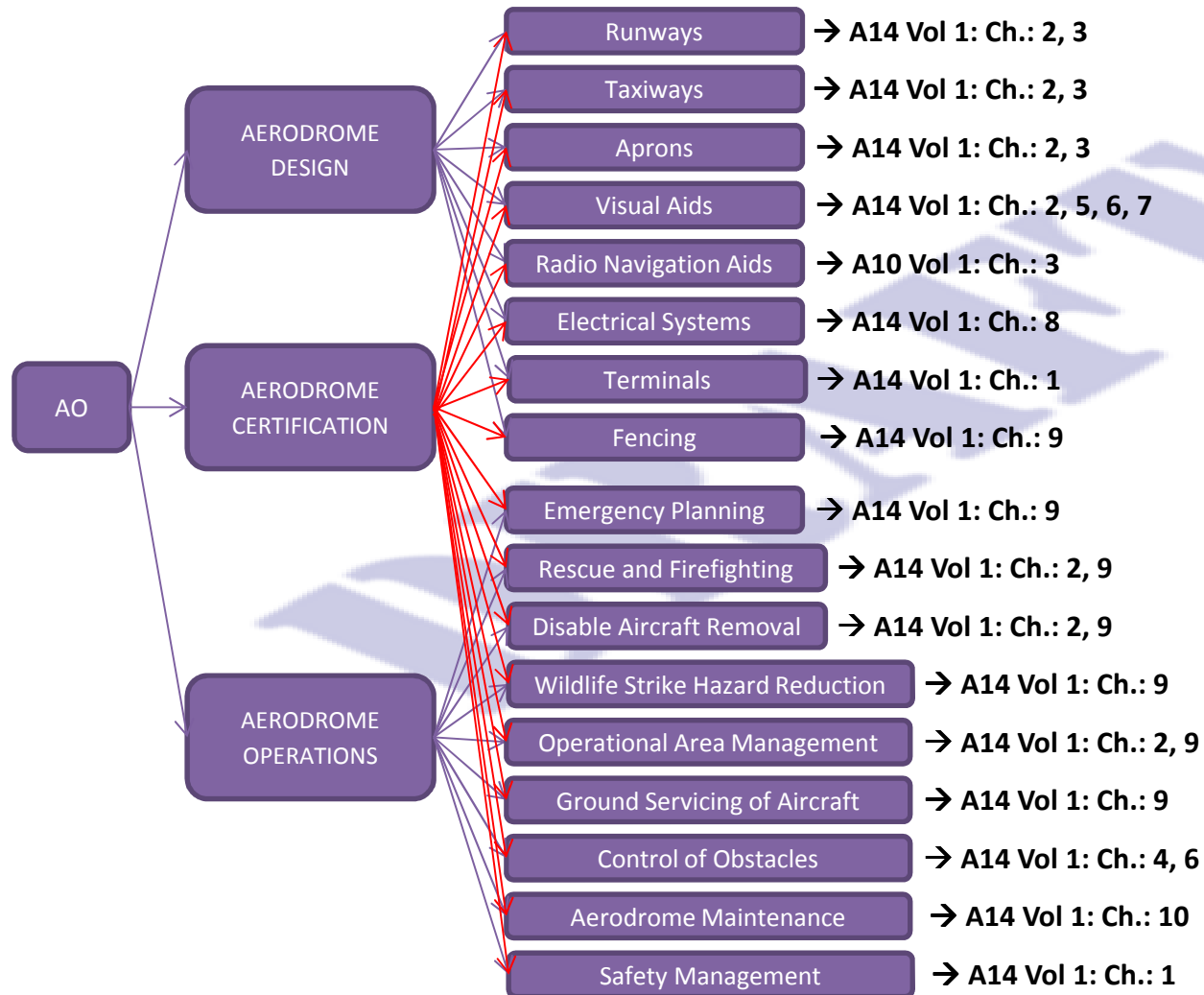
# AO BASIC MODULES AND ELEMENTS



# AO SUPPORT & END USERS

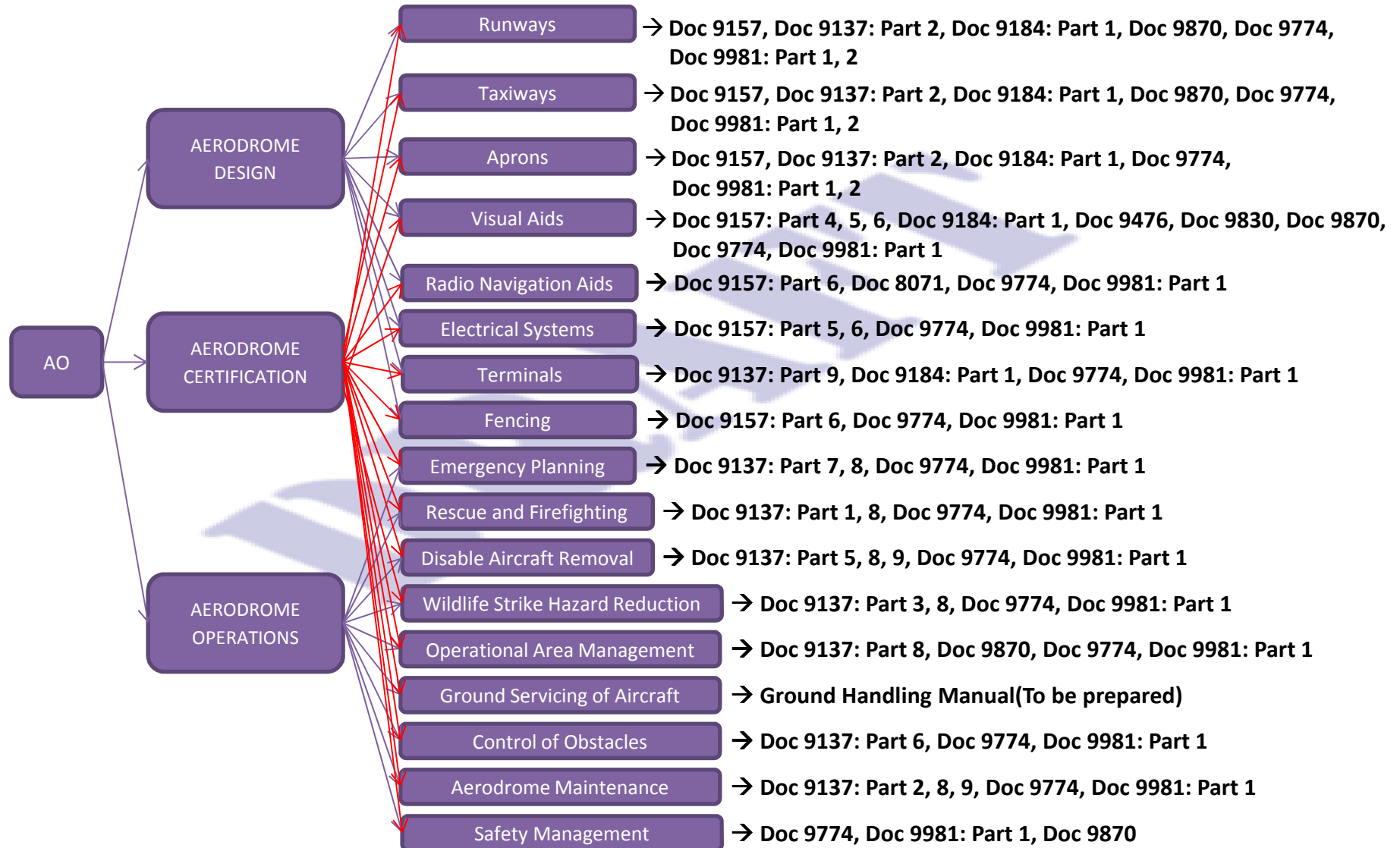


# AO BASIC ELEMENTS/REFERENCES ICAO SARPs



# AO BASIC ELEMENTS/REFERENCES ICAO

## Guidance & Procedures





# AO References

- Annex 14: Aerodromes Volume I — Aerodrome Design and Operations
- Annex 10: Aeronautical Telecommunications Volume I — Radio Navigation Aids
- Doc 9157: Aerodromes Design Manual
- Doc 9184: Airport Planning Manual
- Doc 9137: Airport Services Manual
- Doc 9476: Manual of Surface Movement Guidance and Control Systems (SMGCS)
- Doc 9830: Advanced Surface Movement Guidance and Control Systems (A-SMGCS) Manual
- Doc 9870: Manual on the Prevention of Runway Incursions
- Doc 8071: Manual on Testing of Radio Navigation Aids
- Doc 9774: Manual on Certification of Aerodromes
- PANS-Aerodromes(Doc 9981): Aerodromes