



ORGANIZACIÓN DE AVIACIÓN CIVIL INTERNACIONAL
Organismo especializado de las Naciones Unidas

Seminario sobre el enfoque de observación continua (CMA) del USOAP

Módulo 4

**Cómo realizar una autoevaluación
de PQ y cómo elaborar y actualizar
planes de medidas correctivas (CAP)**

Objetivo



Este módulo tiene como objetivo explicar:

- cómo realizar una autoevaluación de PQ;
y
- cómo presentar y actualizar CAP.

Descripción



- Cómo realizar una autoevaluación de PQ.**
- Cómo presentar CAP.**
- Cómo actualizar CAP.**

Cómo realizar una autoevaluación de PQ

Autoevaluación de PQ



- Una autoevaluación de PQ permite a los Estados responder a las preguntas del protocolo (PQ) por medio del marco en línea (OLF) del CMA a fin de llevar a cabo evaluaciones de la situación de sus sistemas de vigilancia de la seguridad operacional de la aviación civil.
- En particular, los Estados:
 - evalúan la “**situación de la aplicación**” de cada PQ (es decir, satisfactoria, no satisfactoria o no aplicable);
 - proporcionan “**comentarios**” para explicar “la situación”; y
 - adjuntan “**pruebas**” de apoyo.
- Se alienta a los Estados a que realicen autoevaluaciones, en particular, a la luz de la adopción del Anexo 19 — *Gestión de la seguridad operacional*.

Self-Assessment



Autoevaluación de PQ (cont.)



- Antes de realizar autoevaluaciones en el OLF, los Estados deberían aplicar sus CAP y actualizar la situación de la aplicación de los mismos con respecto a cada constatación relacionada con una PQ.
- La herramienta “**Self-assessment**” (autoevaluación) del OLF permite a los Estados:
 - indicar/actualizar la situación de la aplicación de cada PQ;
 - presentar pruebas de apoyo;
 - realizar auditorías internas;
 - prepararse para una actividad del CMA del USOAP; y
 - observar sus propios sistemas de vigilancia de la seguridad operacional de la aviación civil.

Autoevaluación de PQ (cont.)



Con carácter prioritario, los Estados harán una autoevaluación de las PQ cuando:

- a) éstas se consideren “no satisfactorias” en una actividad previa del USOAP;
- b) sean nuevas y se hayan introducido por medio de enmiendas de las PQ (clasificadas como “PQ indefinidas”);
- c) estén enmendadas, si la enmienda tiene repercusiones en la condición de las PQ; y
- d) la situación de su aplicación haya cambiado debido a cambios en el sistema de aviación, los reglamentos y/o procedimientos de los Estados.

Después de la autoevaluación...



- La OACI utiliza los resultados de las autoevaluaciones de los Estados para prepararse para las actividades del CMA.
- Por medio de estas actividades, la OACI examina y valida la autoevaluación de un Estado para determinar el nivel más reciente de aplicación eficaz (EI) de su capacidad de vigilancia de la seguridad operacional.
- La OACI revisará las PQ en forma periódica para reflejar los cambios en los documentos de referencia.
- Es importante que los Estados hagan siempre mención a las versiones indicadas de los documentos de referencia.

Cómo realizar una autoevaluación de PQ



- Diríjase al sitio web del marco en línea (OLF) del CMA del USOAP: www.icao.int/usoap.
- Haga clic en el ícono *Self assessment* (autoevaluación).

Self-Assessment



Autoevaluación de PQ



Language State **ICAO CMA Training site - Any data updates are temporary and for practice only !!!**

Welcome:Futureland NCMC [Logout](#) [Home](#) [Help](#)

State Dashboard Protocol Question (PQ) Finding & Recommendation (F&R) Corrective Action Plan (CAP) User Management

Protocol Question (PQ) / Manage State Self-Assessment

Status of Implementation Audit Area Audit Area Group Critical Element Critical Element Group

SSC New Protocol Status PQ/Finding No. [Clear](#)

PQ No.	Show/Hide Question	Details
1.001 LEG CE-1 S	Has the State developed and implemented procedures for the amendment of its specific regulations taking into consideration ICAO provisions and their amendments?	
1.005 LEG CE-1 S	Does the primary aviation legislation provide for the introduction/adoption and subsequent promulgation of civil aviation regulations?	The Ministry for Transport of Futureland recently established a general procedure for reviewing ICAO State letters, amending its regulations as needed, and notifying ICAO of differences with the ICAO SARPs. However: a) _____ in the field of aerodromes, there has not been a systematic and timely amendment of the Progress Documented: <input type="button" value="Translate"/>
1.007 LEG CE-2 S	Does the State's rule-making process ensure the timely promulgation of specific operating regulations in compliance with the Annexes?	Evidence: <input type="button" value="Translate"/>
1.009 LEG CE-2 N/S	Has the State developed and implemented procedures for the amendment of its specific regulations taking into consideration ICAO provisions and their amendments?	
1.011 LEG CE-2 S	Are the primary aviation legislation and the associated operating regulations available to the public?	
1.013 LEG CE-1 S	Does the primary aviation legislation provide for the establishment of a civil aviation organization(s) and the appointment of a Director General (DG)/Chief Executive Officer (CEO)?	
1.015 LEG	Does the State's primary aviation legislation clearly delegate authority to the Director	

Results of State Assessment--"Read/Write" Draft Copy

Reply to Protocol Question Status of Implementation

Last Modified [Click To View CAP](#)

Remarks:
1.The State has NOW amended regulations included aerodromes with the provisions of the LATEST ICAO Annex amendment.
2.Procedure ABC revised to verify all regulation(include aerodromes)remain up to date.
3.AIP revised and published with all significant differences included aerodromes.

Evidence:
1. www.futureland.com/regulations/aerodromes; Gazette N°1
2. Regulation ABC page 4 (List Effective Page), 5 (Record of rAerodrome regulations page 3, 4 and 5; (revision) and 10 (procedure):

Autoevaluación de PQ — ICVM



Language State **ICAO CMA Training site - Any data updates are temporary and for practice only !!!** Welcome:Futureland NCMC [Logout](#) [Home](#) [Help](#)

State Dashboard **Protocol Question (PQ)** Finding & Recommendation (F&R) Corrective Action Plan (CAP) User Management

Protocol Question (PQ) / Manage State Self-Assessment

Status of Implementation Audit Area Audit Area Group Critical Element Critical Element Group
SSC PQ/Finding No. [Clear](#)

- All
- All
- Satisfactory
- Not satisfactory
- Not applicable

PQ No.	Show/Hide Question	Status of Implementation by ICAO	CMA Protocols as of May 2013
1.001 LEG CE-1 S	Has the State promulgated primary aviation legislation, laws, or regulations to add to the Ch...	Reply to Protocol Question <input type="text"/> Status of Implementation <input type="text" value="Not satisfactr"/> CSA Audit Finding <input type="text" value="LEG/01"/> SSC <input type="checkbox"/>	ewing ICAO the ICAO
1.005 LEG CE-1 S	Does t provide subsec regula	Evidence: Translate	
1.007 LEG CE-2 S	Does the State's rule-making process ensure the timely promulgation of specific operating regulations in compliance with the Annexes?		
1.009 LEG CE-2 N/S	Has the proces specifi consid amen		
1.011 LEG CE-2 S	Are the assoc to the public?	Last Modified <input type="text" value="09/07/2013"/> Click To View CAP	Draft Copy <input checked="" type="checkbox"/>
1.013 LEG CE-1 S	Does the primary aviation legislation provide for the establishment of a civil aviation organization(s) and the appointment of a Director General (DG)/Chief Executive Officer (CEO)?	Remarks: 1.The State has NOW amended regulations included aerodromes with the provisions of the LATEST ICAO Annex amendment. 2.Procedure ABC revised to verify all regulation(include aerodromes)remain up to date. 3.AIP revised and published with all significant differences included aerodromes.	
1.015 LEG	Does the State's primary aviation legislation clearly delegate authority to the Director	Evidence: 1. www.futureland.com/regulations/aerodromes; Gazette N°1 2. Regulation ABC page 4 (List Effective Page), 5 (Record of rAerodrome regulations page 3, 4 and 5; ...)	

Los Estados que se preparan para una ICVM deberán realizar una autoevaluación de todas las PQ “no satisfactorias” en las áreas de auditoría seleccionadas.

Seleccione la opción “Not satisfactory” para observar la lista completa de PQ “no satisfactorias” en el área de auditoría seleccionada.

Autoevaluación de PQ — Auditoría



Language State **ICAO CMA Training site - Any data updates are temporary and for practice only !!!**

Welcome:Futureland NCMC [Logout](#) [Home](#) [Help](#)

State Dashboard Protocol Question (PQ) Finding & Recommendation (F&R) Corrective Action Plan (CAP) User Management

Protocol Question (PQ) / Manage State Self-Assessment

Status of Implementation Audit Area Audit Area Group Critical Element Critical Element Group

SSC New PQ/Finding No. [Clear](#)

Show/Hide Question

Status of Implementation by ICAO

CMA Protocols as of May 2013

Los Estados se prepararán para una auditoría realizando una autoevaluación de todas las PQ.

Seleccione la opción "All" para visualizar todas las PQ.

1.001 LEG CE-1 S	
1.005 LEG CE-1 S	Does the primary aviation legislation provide for the introduction/adoption and subsequent promulgation of civil aviation regulations?
1.007 LEG CE-2 S	Does the State's rule-making process...
1.009 LEG CE-2 N/S	Has the State developed and implemented procedures for the amendment of its specific regulations taking into consideration ICAO provisions and their amendments?
1.011 LEG CE-2 S	Are the primary aviation legislation and the associated operating regulations available to the public?
1.013 LEG CE-1 S	Does the primary aviation legislation provide for the establishment of a civil aviation organization(s) and the appointment of a Director General (DG)/Chief Executive Officer (CEO)?
1.015 LEG	Does the State's primary aviation legislation clearly delegate authority to the Director

Progress Documented:

Results of State Assessment--"Read/Write"

Draft Copy

Reply to Protocol Question Status of Implementation

Last Modified [Click To View CAP](#)

Remarks:

- 1.The State has NOW amended regulations included aerodromes with the provisions of the LATEST ICAO Annex amendment.
- 2.Procedure ABC revised to verify all regulation(include aerodromes)remain up to date.
- 3.AIP revised and published with all significant differences included aerodromes.

Evidence:

1. www.futureland.com/regulations/aerodromes; Gazette N°1
2. Regulation ABC page 4 (List Effective Page), 5 (Record of rAerodrome regulations page 3, 4 and 5; evidence) and 10 (procedure).

Autoevaluación de PQ (cont.)



Language State **ICAO CMA Training site - Any data updates are temporary and for practice only !!!**

Welcome:Futureland NCMC [Logout](#) [Home](#) [Help](#)

State Dashboard **Protocol Question (PQ)** Finding & Recommendation (F&R) Corrective Action Plan (CAP) User Management

Protocol Question (PQ) / Manage State Self-Assessment

Status of Implementation Audit Area Audit Area Group Critical Element Critical Element Group

SSC New Protocol Status PQ/Finding No. [Clear](#)

PQ No.	Show/Hide Extended Columns	Question
1.001 LEG CE-1 S		Has the State promulgated primary aviation legislation (including civil aviation acts, laws, decrees, resolutions, etc.) to enable it to address its obligations as a signatory to the Chicago Convention?
1.005 LEG CE-1 S		Does the primary aviation legislation provide for the introduction/adoption and subsequent promulgation of civil aviation regulations?
1.007 LEG CE-2 S		Does the State's rule-making process ensure the timely promulgation of specific operating regulations in compliance with the Annexes?
1.009 LEG CE-2 N/S		Has the State developed and implemented procedures for the amendment of its specific regulations taking into consideration ICAO provisions and their
1.011 LEG CE-2 S		Are the primary aviation legislation and the associated operating regulations available to the public?
1.013 LEG CE-1 S		Does the primary aviation legislation provide for the establishment of a civil aviation organization(s) and the appointment of a Director General (DG)/Chief Executive Officer (CEO)?
1.015 LEG		Does the State's primary aviation legislation clearly delegate authority to the Director

Status of Implementation by ICAO

CMA Protocols as of May 2013

Reply to Protocol Question Status of Implementation CSA Audit Finding SSC

Activity Start Date End Date Report Publication Date

Description:

The Ministry for Transport of Futureland recently established a general procedure for reviewing ICAO State letters, amending its regulations as needed, and notifying ICAO of differences with the ICAO SARPs. However:

Progress Documented:

Evidence:

Seleccione la PQ

Results of State Assessment--"Read/Write"

Draft Copy

Reply to Protocol Question Status of Implementation

Last Modified [Click To View CAP](#)

Remarks:

- The State has NOW amended regulations included aerodromes with the provisions of the LATEST ICAO Annex amendment.
- Procedure ABC revised to verify all regulation(include aerodromes)remain up to date.
- AIP revised and published with all significant differences included aerodromes.

Evidence:

- www.futureland.com/regulations/aerodromes; Gazette N°1
- Regulation ABC page 4 (List Effective Page), 5 (Record of rAerodrome regulations page 3, 4 and 5; (revision) and 10 (procedure).

Autoevaluación de PQ (cont.)



Language State **ICAO CMA Training site - Any data updates are temporary and for practice only !!!** Welcome:Futureland NCMC [Logout](#) [Home](#) [Help](#)

[State Dashboard](#) [Protocol Question \(PQ\)](#) [Finding & Recommendation \(F&R\)](#) [Corrective Action Plan \(CAP\)](#) [User Management](#)

Protocol Question (PQ) / Manage State Self-Assessment

Status of Implementation Audit Area Audit Area Group Critical Element Critical Element Group

SSC New Protocol Status PQ/Finding No. [Clear](#)

PQ No.	Show/Hide Extended Columns Question
1.001 LEG CE-1 S	Has the State promulgated primary aviation legislation (including civil aviation acts, laws, decrees, resolutions, etc.) to enable it to address its obligations as a signatory to the Chicago Convention?
1.005 LEG CE-1 S	Does the primary aviation legislation provide for the introduction/adoption and subsequent promulgation of civil aviation regulations?
1.007 LEG CE-2 S	Does the State's rule-making process ensure the timely promulgation of specific operating regulations in compliance with the Annexes?
1.009 LEG CE-2 N/S	Has the State developed and implemented procedures for the amendment of its specific regulations taking into consideration ICAO provisions and their amendments?
1.011 LEG CE-2 S	Are the primary aviation legislation and the associated operating regulations available to the public?
1.013 LEG CE-1 S	Does the primary aviation legislation provide for the establishment of a civil aviation organization(s) and the appointment of a Director General (DG)/Chief Executive Officer (CEO)?
1.015 LEG	Does the State's primary aviation legislation clearly delegate authority to the Director

Status of Implementation by ICAO

CMA Protocols as of May 2013

Reply to Protocol Question Status of Implementation CSA Audit Finding SSC

Activity Start Date End Date Report Publication Date

Description

The Ministry of Transport of Futureland recently established a general procedure for reviewing ICAO State letters, amending its regulations as needed, and notifying ICAO of differences with the ICAO SARPs. However:

Progress Documented:

Evidence:

Results of State Assessment - Read/Write

Draft Copy

Cuando realice la autoevaluación, haga primero referencia a los comentarios de la OACI del informe de la última actividad.

Annex amendment.
2.Procedure ABC revised to verify all regulation(include aerodromes)remain up to date.

Haga clic en el botón "Translate" (traducir) para obtener la traducción del texto al idioma de la OACI que dese.

Traducción de textos



Status of Implementation by ICAO **CMA Protocols as of May 2013**

Reply to Protocol Question Status of Implementation CSA Audit Finding SSC

Activity Start Date End Date Report Publication Date

Description:

English	Français	Español	Русский	العربية	中文
---------	----------	---------	---------	---------	----

Le ministère des Transports du Futureland récemment mis en place une procédure générale pour examiner les lettres de l'État de l'OACI, la modification des règlements, au besoin, et d'informer l'OACI des différences avec les SARP de l'OACI. Toutefois: a) dans le domaine des aéroports, il n'ya pas eu une modification systématique et rapide des réglementations nationales pour assurer l'application des dispositions énoncées dans les annexes de l'OACI; b) des différences existantes n'ont pas encore été

The Ministry for Transport of Futureland recently established a general procedure for reviewing ICAO State letters, amending its regulations as needed, and notifying ICAO of differences with the ICAO SARPs. However:

Progress Documented:

Evidence:

Haga clic para seleccionar el idioma deseado.

El texto traducido aparecerá en el recuadro de arriba, mientras que el texto en el idioma original aparecerá en el recuadro de abajo.

Utilice la barra de desplazamiento para desplazarse hacia la parte superior e inferior de los recuadros.

Cómo visualizar las guías y referencias



Language: English State: Futureland ICAO CMA Training site - Any data updates are temporary and for practice only !!! Welcome: Futureland NCMC Logout Home Help

State Dashboard Protocol Question (PQ) Finding & Recommendation (F&R) Corrective Action Plan (CAP) User Management

Protocol Question (PQ) / Manage State Self-Assessment

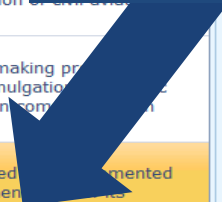
Status of Implementation: All Audit Area: LEG Audit Area Group: All Critical Element: All Critical Element Group: All

SSC: All New Protocol Status

PQ No. Show/Hide Extended Columns Question

1.001 LEG CE-1 S	Has the State promulgated legislation (including civil laws, decrees, resolutions) to address its obligations under the Chicago Convention?
1.005 LEG CE-1 S	Does the primary aviation legislation provide for the introduction of subsequent promulgation of operating regulations?
1.007 LEG CE-2 S	Does the State's rule-making process ensure the timely promulgation of operating regulations in accordance with the Annexes?
1.009 LEG C	Has the State developed documented procedures for the amendment of regulations?

Para visualizar la guía y las referencias de la PQ seleccionada, haga clic dos veces en el número de la PQ (primera columna de la izquierda) y aparecerá la ventana "Review Evidence & References" (examinar pruebas y referencias).



Review Evidence & Reference

Review Evidence:

- 1) Verify implementation of operations inspectors' procedures as part of the certification process.
- 2) Sample air operator's training manuals.
- 3) Sample ACAS training programme and records to confirm implementation.

Reference:

STD A6 Part I App. 2, 2.1.31 GM Doc 8168 Vol I A6 Part III Sec. 3 C3 Att. A

Progress Documented:

Evidence:

of State Assessment--"Read/Write" Draft Copy

Protocol Question: Yes Status of Implementation: Satisfactory

Modified: 09/07/2013 [Click To View CAP](#)

State has NOW amended regulations included aerodromes with the provisions of the LATEST ICAO amendment.

Procedure ABC revised to verify all regulation (include aerodromes) remain up to date. Revised and published with all significant differences included aerodromes.

futureland.com/regulations/aerodromes; Gazette N°1
Regulation ABC page 4 (List Effective Page), 5 (Record of rAerodrome regulations page 3, 4 and 5; and 10 (procedure).

Ejemplo



PQ No.	Question (pregunta)
4.223 OPS CE-6	¿Se asegura la organización de operaciones de aeronaves de que el explotador de servicios aéreos haya establecido para sus pilotos un programa de instrucción en el uso de ACAS en aeronaves equipadas con ACAS?

Review Evidence (examinar pruebas):

- 1) Verificar la aplicación de los procedimientos de los inspectores de operaciones como parte del proceso de certificación.
- 2) Examinar una muestra de manuales de instrucción de explotadores de servicios aéreos.
- 3) Examinar unas muestras de programas y registros de instrucción sobre ACAS para confirmar su aplicación.

Referencias:

STD: A6, Parte I Ap. 2, 2.1.31

A6, Parte III Sec 3, C3, Adj. 1

GM: Doc 8168, Vol. I

Review Evidence & Reference

Review Evidence:

1) Verificar la aplicación de los procedimientos de los inspectores de operaciones como parte del proceso de certificación. 2) Examinar una muestra de manuales de instrucción de explotadores de servicios aéreos. 3) Examinar unas muestras de programas y registros de instrucción sobre ACAS para confirmar su aplicación.

Referencias:

STD A6 Parte I Ap. 2 2.1.31 Parte III Sec 3 C 3 Adj. A GM Doc 8168, Vol. I

Autoevaluación de PQ (cont.)



Para visualizar las PQ “no satisfactorias”, examinar el texto que figura en “**Description**” (descripción) y “**Progress Documented**” (progreso documentado) bajo la barra de herramientas “**Status of Implementation by ICAO**” (situación de la aplicación por parte de la OACI).
Nota.— Las PQ “satisfactorias” no contienen esta información.

PQ No.	Show/Hide Extended Columns	Question
1.001 LEG CE-1 S		Has the State promulgated primary aviation legislation (including civil aviation acts, laws, decrees, resolutions, etc.) to enable it to address its obligations as a signatory to the Chicago Convention?
1.005 LEG CE-1 S		Does the primary aviation legislation provide for the introduction/adoption and subsequent promulgation of civil aviation regulations?
1.007 LEG CE-2 S		Does the State's rule-making process ensure the timely promulgation of specific operating regulations in compliance with the Annexes?
1.009 LEG CE-2 N/S		Has the State developed and implemented procedures for the amendment of its specific regulations taking into consideration ICAO provisions and their amendments?
1.011 LEG CE-2 S		Are the primary aviation legislation and the associated operating regulations available to the public?
1.013 LEG CE-1 S		Does the primary aviation legislation provide for the establishment of a civil aviation organization(s) and the appointment of a Director General (DG)/Chief Executive Officer (CEO)?
1.015 LEG		Does the State's primary aviation legislation clearly delegate authority to the Director

Status of Implementation by ICAO CMA Protocols as of May 2013

Reply to Protocol Question Status of Implementation CSA Audit Finding SSC

Activity Start Date End Date Report Publication Date

Description:

The Ministry for Transport of Futureland recently established a general procedure for reviewing ICAO State letters, amending its regulations as needed, and notifying ICAO of differences with the ICAO SARPs. However:

Progress Documented:

Evidence:

Results of State Assessment--"Read/Write" Draft Copy

Reply to Protocol Question Status of Implementation

Last Modified [Click To View CAP](#)

Remarks:

- 1.The State has NOW amended regulations included aerodromes with the provisions of the LATEST ICAO Annex amendment.
- 2.Procedure ABC revised to verify all regulation(include aerodromes)remain up to date.
- 3.AIP revised and published with all significant differences included aerodromes.

Evidence:

1. www.futureland.com/regulations/aerodromes; Gazette N°1
2. Regulation ABC page 4 (List Effective Page), 5 (Record of rAerodrome regulations page 3, 4 and 5; ...)

Cómo visualizar los CAP

Para visualizar el CAP de la PQ conexas, haga clic en el enlace **“Click To View CAP”** en la parte derecha. *O BIEN*

S	procedures for the amendment of its specific regulations taking into consideration ICAO provisions and their amendments?	
011	Are the primary aviation legislation and the associated operating regulations available to the public?	<p>Results of State Assessment--"Read/Write" Draft Copy <input checked="" type="checkbox"/></p> <p>Reply to Protocol Question <input type="text" value="Yes"/> Status of Implementation <input type="text" value="Satisfactory"/></p> <p>Last Modified <input type="text" value="09/07/2013"/> Click To View CAP</p> <p>Remarks:</p> <p>1.The State has NOW amended regulations included aerodromes with the provisions of the LATEST ICAO Annex amendment .</p> <p>2.Procedure ABC revised to verify all regulation(include aerodromes)remain up to date.</p> <p>3.AIP revised and published with all significant differences included aerodromes.</p> <p>Evidence:</p> <p>1. www.futureland.com/regulations/aerodromes; Gazette N°1</p> <p>2. Regulation ABC page 4 (Not Effective Page) 5 (Record of Aerodrome regulations page 3, 4 and 5:</p>
013	Does the primary aviation legislation provide for the establishment of a civil aviation organization(s) and the appointment of a Director General (DG)/Chief Executive Officer (CEO)?	
015	Does the State's primary aviation legislation	

Diríjase hacia la parte de abajo de la página para visualizar el CAP dentro del recuadro **“Corrective Action Plan”**.

S	organization, is there a legal basis for this transfer?	<p>reg_Aerodrome.pdf 22,905 bytes Delete</p> <p>approval-page-proced_ABC.pdf 33,475 bytes Delete</p> <p>reg_Aerodrome.pdf 22,905 bytes Delete</p> <p>approval-page-proced_ABC.pdf 33,475 bytes Delete</p> <p>AIP.pdf 13,597 bytes Delete</p> <p>Arrêté N°222MTANAC du 18 mai 2012.pdf 918,039 bytes Delete</p> <p>Essais 1.pdf 5,822 bytes Delete</p> <p>decision 0831.pdf 80,774 bytes Delete</p> <p>Upload Files</p> <p>Corrective Action Plan</p>
---	---	---

Autoevaluación de PQ (cont.)

Results of State Assessment--"Read/Write" Draft Copy

Reply to Protocol Question **Yes** Status of Implementation **Satisfactory**

Last Modified 03/02/2013 [Click To View CAP](#)

Remarks

• CA
pro
• Inspector guidance is detailed in Operation Inspector Manual, chapter 4, section 2
•

Evidence

• CA
• Op
• Th

Attach

Sele

Upload Files

Save as Draft Submit to ICAO

CAS

endix

es

tes

Seleccionar “Sí” o “No” en “Reply to Protocol Question” basándose en si el Estado ha respondido a la PQ pertinente.

Indicar la situación de la aplicación por parte del Estado respecto a la PQ conexas.

- “**Satisfactorio**” significa que el Estado ha cumplido todos los requisitos que figuran en la guía de la PQ.
- “**No satisfactorio**” significa que el Estado no ha cumplido plenamente ninguno de los requisitos que figuran en la guía de la PQ.
- “**No aplicable**” significa que la PQ no es aplicable en el Estado (p. ej. cuando una PQ está relacionada con RO y el Estado no tiene ninguna).
- “**EN BLANCO**” significa que la PQ es indefinida, normalmente cuando la PQ sea nueva y no haya sido objeto de auditoría.

Presentación de comentarios



Language State **ICAO CMA Training site - Any data updates are temporary and for practice only !!!**

Welcome:Futureland NCMC [Logout](#) [Home](#) [Help](#)

State Dashboard Protocol Question (PQ) Finding & Recommendation (F&R) Corrective Action Plan (CAP) User Management

Protocol Question (PQ) / Manage State Self-Assessment

Status of Implementation Audit Area Audit Area Group Critical Element Critical Element Group

SSC New Protocol Status PQ/Finding No. [Clear](#)

PQ No.	Show	Question	Answer
1.001 LEG CE-1 S			
1.005 LEG CE-1 S		Does the primary aviation legislation provide for the introduction/revision and	SARPs. However:
1.007 LEG CE-2 S			
1.009 LEG CE-2 N/S		Has the State developed and implemented procedures for the amendment of its specific regulations taking into consideration ICAO provisions and their amendments?	
1.011 LEG CE-2 S		Are the primary aviation legislation and the associated operating regulations available to the public?	
1.013 LEG CE-1 S		Does the primary aviation legislation provide for the establishment of a civil aviation organization(s) and the appointment of a Director General (DG)/Chief Executive Officer (CEO)?	
1.015 LEG		Does the State's primary aviation legislation clearly delegate authority to the Director	

Consulte primeramente la guía de la ventana “Review Evidence & References” (examinar pruebas y referencias) para prepararse y, a continuación, en el recuadro “Remarks”, incorpore sus comentarios para explicar la “situación de la aplicación”.

En el recuadro “Remarks, incorpore una frase que describa el avance en la aplicación de cada elemento descrito en la guía que figura en “Review Evidence & References”.

Results of State Assessment--"Read/Write" Draft Copy

Reply to Protocol Question Status of Implementation

Last Modified [Click To View CAP](#)

Remarks:

1.The State has NOW amended regulations included aerodromes with the provisions of the LATEST ICAO Annex amendment.
2.Procedure ABC revised to verify all regulation(include aerodromes)remain up to date.
3.AIP revised and published with all significant differences included aerodromes.

Evidence:

1. www.futureland.com/regulations/aerodromes; Gazette N°1
2. Regulation ABC page 4 (List Effective Page), 5 (Record of rAerodrome regulations page 3, 4 and 5; evidence) and 10 (procedure):

Presentación de comentarios (cont.)



Cuestiones a tener en cuenta al presentar los comentarios
(*Remarks*):

- El Estado deberá proporcionar comentarios para explicar la situación de la aplicación (Satisfactoria/No satisfactoria/No aplicable) de la PQ pertinente.
- Los comentarios deberán responder, punto por punto y en una sola frase, a cada uno de los elementos correspondientes de la guía que figura en la ventana ***Review Evidence & References***.
- Si se adjuntan pruebas de apoyo, el Estado deberá proporcionar referencias detalladas, tales como capítulos, páginas y párrafos.



Presentación de pruebas

Language English State Futureland **ICAO CMA Training site - Any data updates are temporary and for practice only !!!**

Welcome:Futureland NCMC [Logout](#) [Home](#) [Help](#)

State Dashboard Protocol Question (PQ) Finding & Recommendation (F&R) Corrective Action Plan (CAP) User Management

Protocol Question (PQ) / Manage State Self-Assessment

Status of Implementation

SSC All

PQ No.

Show/Hide Extended Columns Question

Status of Implementation by ICAO

CMA Protocols as of May 2013

1.001
LEG
CE-1
S

Has leg
lavi
to a
the

1.005
LEG
CE-1
S

Do
pro
sub
reg

1.007
LEG
CE-2
S

Does the State's rule-making process ensure the timely promulgation of specific operating regulations in compliance with the Annexes?

1.009
LEG
CE-2
N/S

Has the State developed and implemented procedures for the amendment of its specific regulations taking into consideration ICAO provisions and their amendments?

1.011
LEG
CE-2
S

Are the primary aviation legislation and the associated operating regulations available to the public?

1.013
LEG
CE-1
S

Does the primary aviation legislation provide for the establishment of a civil aviation organization(s) and the appointment of a Director General (DG)/Chief Executive Officer (CEO)?

1.015
LEG

Does the State's primary aviation legislation clearly delegate authority to the Director

De ser necesario, proporcione/adjunte pruebas que apoyen los comentarios correspondientes y los elementos de la guía.

Incluya el nombre del documento y referencias concretas. Las referencias a documentos voluminosos deben ser detalladas e incluir capítulos, secciones, páginas, etc.

Evidence: Translate

Results of State Assessment--"Read/Write" Draft Copy

Reply to Protocol Question Yes Status of Implementation Satisfactory

Last Modified 09/07/2013 Click To View CAP

Remarks:

1.The State has NOW amended regulations included aerodromes with the provisions of the LATEST ICAO Annex amendment.
2.Procedure ABC revised to verify all regulation(include aerodromes)remain up to date.
3.AIP revised and published with all significant differences included aerodromes

Evidence:

1. www.futureland.com/regulations/aerodromes; Gazette N°1
2. Regulation ABC page 4 (List Effective Page), 5 (Record of rAerodrome regulations page 3, 4 and 5;

Conclusion de la autoevaluación de PQ



Results of State Assessment--"Read/Write" Draft Copy

Reply to Protocol Question Yes No Status of Implementation Satisfactory Not Satisfactory

Last Modified [Click To View CAP](#)

Remarks:

- CAA-AC-OPS050 Contents of an Operations Manual Section 9.3.2(f) includes the CAA requirements.
- Inspector guidance is detailed in Operation inspector Manual Chapter 4, section 2
- The Air Operator Certification Manual Chapter 10, and checklist in Appendix 1, detail the certification process

Evidence:

- CAA-AC-OPS050 Contents of an Operations Manual Section 9.3.2(f) includes the CAA requirements.
- Operation inspector manual, chapter 4, section 2
- The Air Operator Certification Manual Chapter 10, and checklist in appendix 1, detail the certification process

Attach evidence (e.g. PDF or XPS), limited to 10 files and maximum of 10 MB per file

Adjunte copias de las referencias respecto a cada prueba documental.

Haga clic en "Select" para abrir la ventana y seleccione un archivo para cargarlo.

Haga clic en "Upload Files" para cargar el archivo.

Hasta que usted no finalice la autoevaluación, guarde su trabajo utilizando el botón "Save as Draft".

Una vez finalizada la autoevaluación, haga clic en el botón "Submit to ICAO" (Enviar a la OACI).

Ejemplo de autoevaluación completada



Results of State Assessment--"Read/Write" Draft Copy

Reply to Protocol Question Status of Implementation

Last

Remarks

- CAA
- prog
- Inspe
- The

Evidence

- CAA
- Oper
- The

Attach ev

Select

Upload Files

[Air Operator Certification Manual Chapter 10, and checklist in appendix 1.pdf](#) 536,056 bytes
[Delete](#)

[CAA-AC-OPS050 Ops Manual Section 9.3.2 - Copy.pdf](#) 536,056 bytes
[Delete](#)

[Ops Inspector manual, Chapter 4, section 2 - Copy.pdf](#) 536,056 bytes
[Delete](#)

Consejos prácticos para revisar/actualizar los comentarios ("Remarks"):

Consejos prácticos

- 1) Copiar el texto original que figura en "Remarks" y pegar en un documento en formato WORD.
- 2) Revisar/actualizar el texto original según se requiera.
- 3) Añadir la fecha de presentación en el recuadro "Remarks".
- 4) Añadir el tema del asunto en letras MAYÚSCULAS.
- 5) Copiar y pegar el texto revisado/actualizado en el recuadro "Remarks".
- 6) Hacer clic en "Save as Draft" para guardar el trabajo.

Exportación de la lista de verificación de la autoevaluación



Bajo la pestaña “**Protocol Question (PQ)**” (pregunta del protocolo), seleccione “**Export State Self-Assessment**” (exportar autoevaluación del Estado).

The screenshot shows the ICAO State Self-Assessment interface. The 'Protocol Questions (PQ)' tab is selected, and the 'Export State Self-Assessment' option is highlighted with a blue arrow. The interface includes a navigation bar with tabs for 'State Dashboard', 'Protocol Questions (PQ)', 'Corrective Action Plan (CAP)', 'CMA Activity Management', and 'Tools'. Below the tabs, there are filters for 'Status of Implementation' (All), 'Audit Area' (LEG), 'Audit Area Group' (All), 'Critical Elements' (All), and 'SSC' (All). A search box for 'PQ/Finding No.' is also present. The main content area displays a table of protocol questions, with the first row highlighted in yellow. The table has columns for 'PQ No.' and 'Question'. The first row shows '1.001 LEG CE-1 S' and the question 'Has the State promulgated primary aviation legislation (civil aviation act, code of civil aviation, aeronautics code, etc.)?'. The second row shows '1.003 LEG' and the question 'If the State has not promulgated primary aviation legislation, what method is used to...'. On the right side, there is a section titled 'Status of Implementation by ICAO' with a dropdown for 'Reply to Protocol Question', a checkbox for 'Not Reviewed', a dropdown for 'Activity' (CSA Audit), and a date field for 'Start Date' (12/04/2005). A 'Description' field is also present.

PQ No.	Question
1.001 LEG CE-1 S	Has the State promulgated primary aviation legislation (civil aviation act, code of civil aviation, aeronautics code, etc.)?
1.003 LEG	If the State has not promulgated primary aviation legislation, what method is used to...

Exportación de la lista de verificación de la autoevaluación — *All Protocols* (todos los protocolos)



Para visualizar todas las PQ, haga clic en “All Protocols”.

State Dashboard **Protocol Questions (PQ)** Corrective Action Plan (CAP) CMA Activity Management Tools

Protocol Questions (PQ) / Export State Self-Assessment

**This export feature is utilized for the completion of the protocol questions offline.
The exported file should be not merged or deleted.**

All Protocols Only Not satisfactory Protocols

	Code	Description	Is Locked By State
<input type="checkbox"/>	LEG	primary aviation legislation and civil aviation regulations	<input type="checkbox"/>
<input type="checkbox"/>	ORG	civil aviation organization	<input type="checkbox"/>
<input type="checkbox"/>	PEL	personnel licensing and training	<input type="checkbox"/>
<input type="checkbox"/>	OPS	aircraft operations	<input type="checkbox"/>
<input type="checkbox"/>	AIR	airworthiness of aircraft	<input type="checkbox"/>
<input type="checkbox"/>	AIG	aircraft accident and incident investigation	<input type="checkbox"/>
<input type="checkbox"/>	ANS	air navigation services	<input type="checkbox"/>
<input type="checkbox"/>	AGA	aerodromes and ground aids	<input type="checkbox"/>

Exportación de la lista de verificación de la autoevaluación — *Only Not Satisfactory PQs* (Sólo protocolos no satisfactorios)



Para visualizar sólo las PQ “no satisfactorias” haga clic en “Only Not satisfactory Protocols”.

State Dashboard Protocol Questions (PQ) Corrective Action Plan (CAP) CMA Activity Management Tools

Protocol Questions (PQ) / Export State Self-Assessment

**This export feature is utilized for the completion of the protocol questions offline.
The exported file should be not merged or deleted.**

All Protocols Only Not satisfactory Protocols

	Code	Description	Is Locked By State
<input type="checkbox"/>	LEG	primary aviation legislation and civil aviation regulations	<input type="checkbox"/>
<input type="checkbox"/>	ORG	civil aviation organization	<input type="checkbox"/>
<input type="checkbox"/>	PEL	personnel licensing and training	<input type="checkbox"/>
<input type="checkbox"/>	OPS	aircraft operations	<input type="checkbox"/>
<input type="checkbox"/>	AIR	airworthiness of aircraft	<input type="checkbox"/>
<input type="checkbox"/>	AIG	aircraft accident and incident investigation	<input type="checkbox"/>
<input type="checkbox"/>	ANS	air navigation services	<input type="checkbox"/>
<input type="checkbox"/>	AGA	aerodromes and ground aids	<input type="checkbox"/>

Refresh Submit

Exportación de la lista de verificación de la autoevaluación —PQ seleccionadas



Para visualizar las PQ de una área concreta (una por una), marque el recuadro situado junto al área de auditoría seleccionada.

State Dashboard **Protocol Questions (PQ)** Corrective Action Plan (CAP) CMA Activity Management Tools

Protocol Questions (PQ) / Export State Self-Assessment

**This export feature is utilized for the completion of the protocol questions offline.
The exported file should be not merged or deleted.**

All Protocols Only Not satisfactory Protocols

	Code	Description	Is Locked By State
<input type="checkbox"/>	LEG	primary aviation legislation and civil aviation regulations	<input type="checkbox"/>
<input checked="" type="checkbox"/>	ORG	civil aviation organization	<input type="checkbox"/>
<input type="checkbox"/>	PEL	personnel licensing and training	<input type="checkbox"/>
<input type="checkbox"/>	OPS	aircraft operations	<input type="checkbox"/>
<input type="checkbox"/>	AIR	airworthiness of aircraft	<input type="checkbox"/>
<input type="checkbox"/>	AIG	aircraft accident and incident investigation	<input type="checkbox"/>
<input type="checkbox"/>	ANS	air navigation services	<input type="checkbox"/>
<input type="checkbox"/>	AGA	aerodromes and ground aids	<input type="checkbox"/>

Exportación de la lista de verificación de la autoevaluación (cont.)



Una vez que ha seleccionado la PQ, haga clic en el botón **“Submit”** para descargar el archivo.

State Dashboard Protocol Questions (PQ) Corrective Action Plan (CAP) CMA Activity Management Tools

Protocol Questions (PQ) / Export State Self-Assessment

**This export feature is utilized for the completion of the protocol questions offline.
The exported file should be not merged or deleted.**

All Protocols Only Not satisfactory Protocols

	Code	Description	Is Locked By State
<input type="checkbox"/>	LEG	primary aviation legislation and civil aviation regulations	<input type="checkbox"/>
<input checked="" type="checkbox"/>	ORG	civil aviation organization	<input type="checkbox"/>
<input type="checkbox"/>	PEL	personnel licensing and training	<input type="checkbox"/>
<input type="checkbox"/>	OPS	aircraft operations	<input type="checkbox"/>
<input type="checkbox"/>	AIR	airworthiness of aircraft	<input type="checkbox"/>
<input type="checkbox"/>	AIG	aircraft accident and incident investigation	<input type="checkbox"/>
<input type="checkbox"/>	ANS	air navigation services	<input type="checkbox"/>
<input type="checkbox"/>	AGA	aerodromes and ground aids	<input type="checkbox"/>

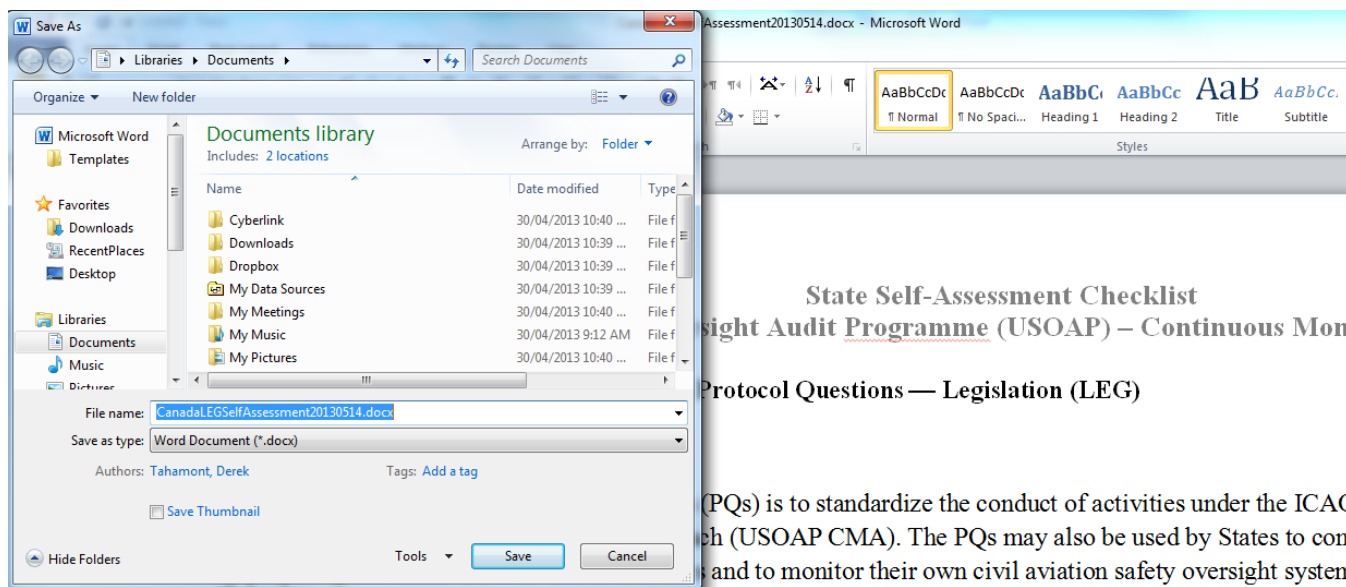
Refresh Submit

!!! Espere unos segundos a que se descargue el archivo, según la velocidad de la conexión a Internet. NO pulse dos veces el botón **“Submit”** (Enviar).

Exportación de la lista de verificación de la autoevaluación (cont.)



Guarde el archivo en el lugar que desee para su uso.



PQs will be subject to periodic revision by ICAO in order to reflect amendments made to the referenced documents. PQs always refer to the latest version of the referenced documents.

When developing the “corrective action plan,” the State should consider all elements of the “not satisfactory”

Exportación de la lista de verificación de la autoevaluación (cont.)



Protocol Question (PQ) / Export Protocol Self-Assessment Checklist

i The export feature is utilized for the completion of the self-assessment protocol questions offline.

Warning: The Unlock feature should only be used to unlock the self-assessment when the original exported document has been lost or there is no need to import the document back into the OLF. The result of unlocking an exported document causes the exported file to become obsolete and cannot be imported into the OLF.

i The exported document requires Microsoft Word 2010 on a Windows based platform. Please ensure the document remains in its native "docx" file format when saving. The exported file should not be merged or modified.

All Protocols Not satisfactory Protocols based on last ICAO activity
 Include SSP Protocols

	Code	Description	Is Locked	Exported	Imported User Email
<input checked="" type="checkbox"/>	LEG	Primary aviation legislation and civil aviation regulations	<input type="checkbox"/>		
<input type="checkbox"/>	ORG	Civil aviation organization	<input checked="" type="checkbox"/> Unlock		
<input type="checkbox"/>	PEL	Personnel licensing and training	<input checked="" type="checkbox"/> Unlock		
<input type="checkbox"/>	OPS	Aircraft operations	<input checked="" type="checkbox"/> Unlock		
<input type="checkbox"/>	AIR	Airworthiness of aircraft	<input checked="" type="checkbox"/> Unlock		
<input type="checkbox"/>	AIG	Aircraft accident and incident investigation	<input checked="" type="checkbox"/> Unlock		
<input type="checkbox"/>	ANS	Air navigation services	<input checked="" type="checkbox"/> Unlock		
<input type="checkbox"/>	AGA	Aerodromes and ground aids	<input checked="" type="checkbox"/> Unlock	Ana Morgan	

“Unlock” (desbloquear) exportaciones que no volverán a importarse en el sistema.

Refresh

© 2013 ICAO. All Rights Reserved

Importación de la lista de verificación de la autoevaluación



Bajo la pestaña “**Protocol Question (PQ)**” (pregunta del protocolo), seleccione “**Import Protocol Self-Assessment Checklist**” (importar lista de verificación de autoevaluación de protocolos).

The screenshot shows the ICAO system interface. At the top, there are navigation tabs: State Dashboard, Protocol Question (PQ), Finding & Recommendation (F&R), Corrective Action Plan (CAP), and User Management. The 'Protocol Question (PQ)' tab is active, and a dropdown menu is open, showing three options: 'Manage State Self-Assessment', 'Export Protocol Self-Assessment Checklist', and 'Import Protocol Self-Assessment Checklist'. A blue arrow points to the 'Import Protocol Self-Assessment Checklist' option. Below the menu, there are filters for 'Audit Area Group' (set to 'All') and 'Critical Element' (set to 'All').

Below the navigation, there is a table of Protocol Questions (PQ) with columns for 'PQ No.' and 'Question'. The table shows three rows:

PQ No.	Question
1.001 LEG CE-1 S	Has the State promulgated primary aviation legislation (civil aviation act, code of civil aviation, aeronautics code, etc.)?
1.003 LEG CE-1 S	If the State has not promulgated primary aviation legislation, what method is used to meet its obligations as a signatory of the Chicago Convention?
1.005	Does the primary aviation legislation provide


On the right side of the interface, there is a section titled 'Status of Implementation by ICAO'. It includes fields for 'Reply to Protocol Question', 'Status of Implementation' (set to 'Satisfactory'), 'Activity' (set to 'CSA Audit'), 'Start Date' (set to '13/05/2008'), and 'End Date' (set to '22/05/2008'). Below these fields are sections for 'Description:', 'Progress Documented:', and 'Evidence:'.

Importación de la lista de verificación de la autoevaluación (cont.)



Haga clic en “**Select**” para abrir la ventana y seleccionar el archivo que desee importar.

Browse and Select PQ file to import

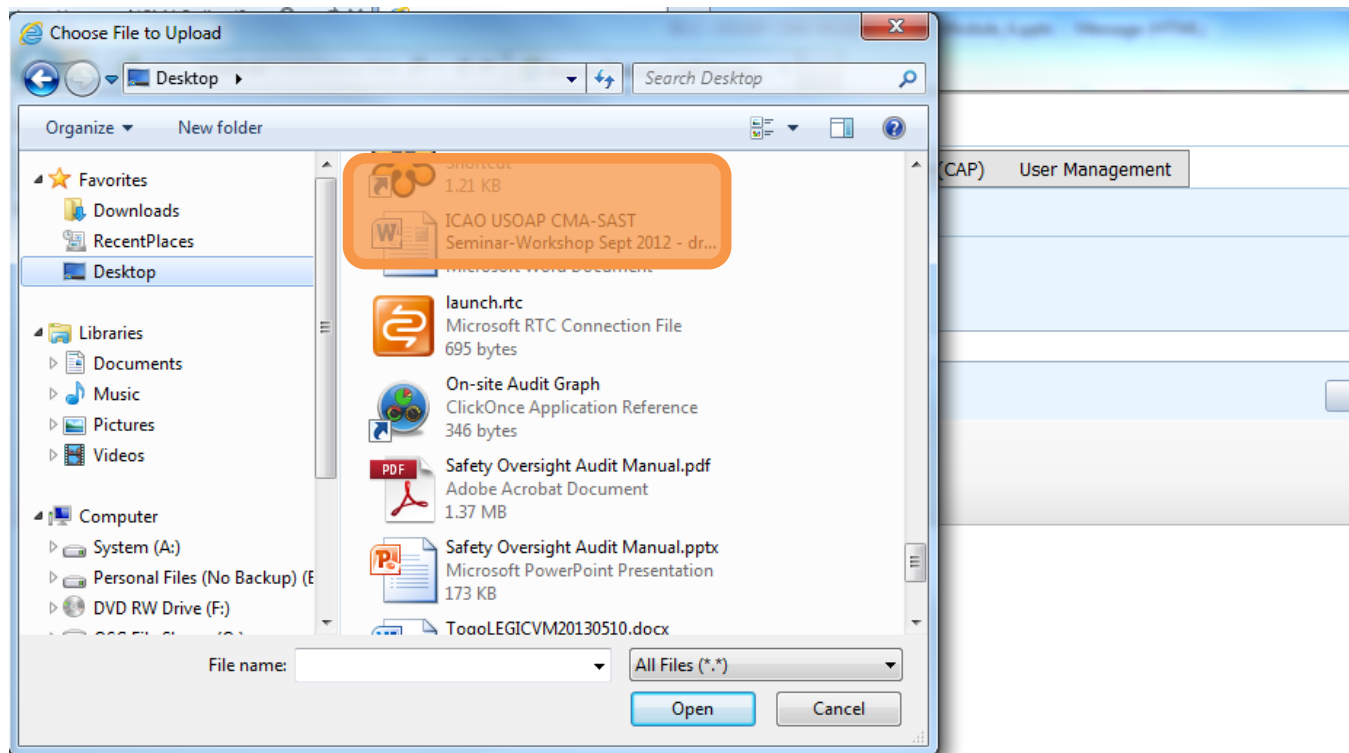


Import the Self-Assessment draft results to the OLF and maintain the lock on said checklist Override all duplicated exported document for the same activity

Importación de la lista de verificación de la autoevaluación (cont.)



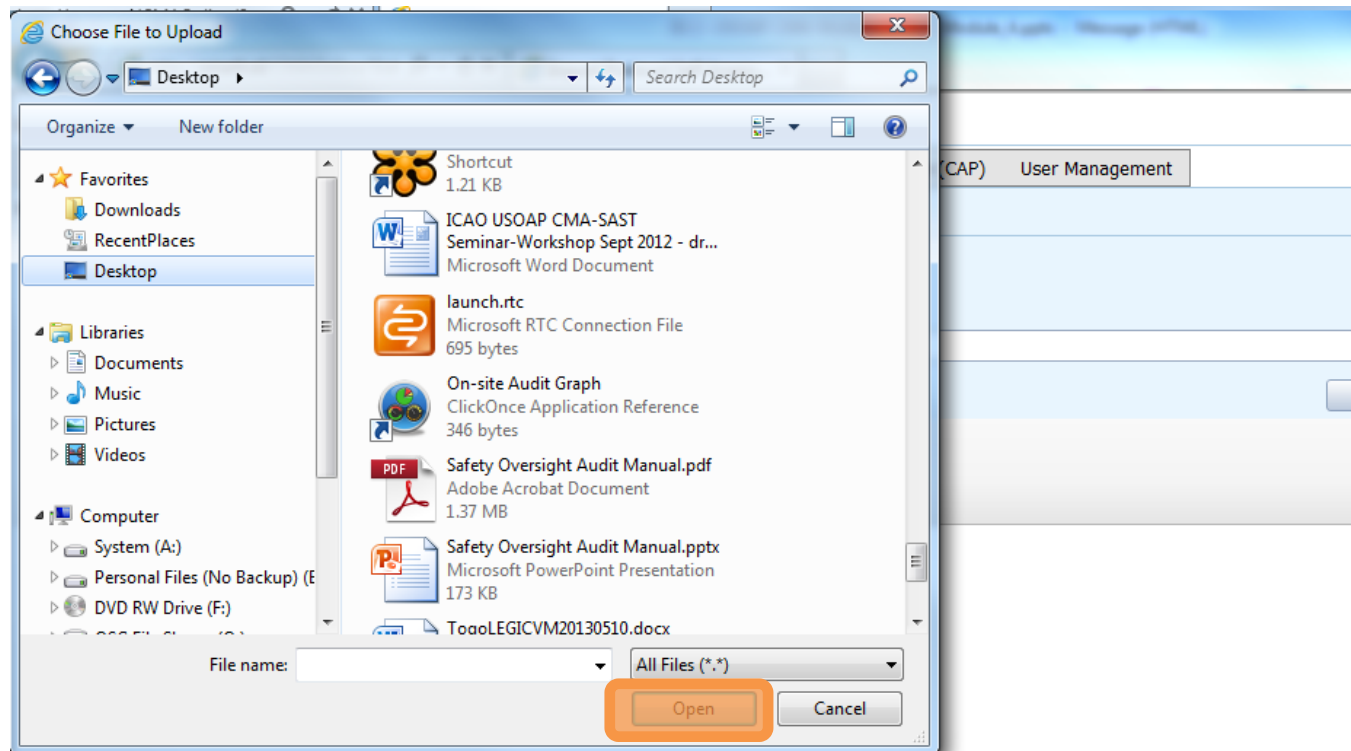
Seleccione el archivo que desee importar y cierre la ventana.



Importación de la lista de verificación de la autoevaluación (cont.)



Haga clic en “Open” para importar el archivo.



Importación de la lista de verificación de la autoevaluación (cont.)



Protocol Question (PQ) / Import Protocol Self-Assessment Checklist



The Import feature is utilized to import Self-Assessment protocol questions that have been documented offline, if you select the 'Import the Self-Assessment draft results to the OLF and maintain the lock on said checklist' option, the audit area will be kept locked for future imports.

Only Audit Area marked as 'Is Locked' can be imported.



The exported document should have only been edited using Microsoft Word 2010 on a Windows based platform. Please ensure the document remains in its native "docx" file format when saving. The exported file should not be merged or modified.

Code	Description	Is Locked
LEG	Primary aviation legislation and civil aviation regulations	<input type="checkbox"/>
ORG	Civil aviation organization	<input type="checkbox"/>
PEL	Personnel licensing and training	<input type="checkbox"/>
OPS	Aircraft operations	<input type="checkbox"/>
AIR	Airworthiness of aircraft	<input type="checkbox"/>
AIG	Aircraft accident and incident investigation	<input type="checkbox"/>
ANS	Air navigation services	<input type="checkbox"/>
AGA	Aerodromes and ground aids	<input type="checkbox"/>

Desbloquear los archivos al importarlos de nuevo en el sistema.

Browse and Select PQ file to import

Import the Self-Assessment draft results to the OLF and maintain the lock on said checklist Override all duplicated exported document for the same activity

Importación de la lista de verificación de la autoevaluación (cont.)



Una vez que aparezca el archivo en el espacio de “Select” (seleccionar), haga clic en “Submit” (enviar).

Browse and Select PQ file to import



ANB Telephone Directory.docx

Select

Import the Self-Assessment draft results to the OLF and maintain the lock on said checklist Override all duplicated exported document for the same activity

Exportación/importación de la lista de verificación de la autoevaluación



Cuestiones a tener en cuenta al exportar/importar archivos:

- Si los archivos exportados van a utilizarse únicamente para fines de información, asegúrese de desbloquear (*Unlock*) el archivo después de exportarlo.
- NO realice ningún cambio en la estructura del documento, SÓLO introduzca información en los espacios señalados.
- ⚠ Los cambios en la estructura del documento le impedirán volver a importar el archivo en el OLF.
- NO cambie el nombre del documento.
- Una vez terminado el trabajo, asegúrese de quitar la marca en botón **“Import the Self-Assessment draft results to the OLF and maintain the lock on said checklist”**.

Cómo presentar CAP

Cómo presentar CAP



Se exige a los Estados que presenten:

- CAP eficaces;
- Actualizaciones regulares de CAP; y
- Informes sobre el progreso de los CAP tal y como lo exige el MOU.

Cómo presentar CAP (cont.)



- Los Estados deben asegurarse de que los CAP presentados:
 - sean relevantes, claros, detallados y exhaustivos;
 - tengan fechas de aplicación realistas;
 - atiendan plenamente las constataciones relativas a PQ; y
 - estén eficazmente encaminados a la aplicación de medidas correctivas y de mitigación.

Cómo presentar CAP (cont.)



¿Por qué es importante que los Estados presenten CAP y actualizaciones de CAP eficaces?

- Lo exige el MOU.
- Asegura que los Estados atiendan plenamente las constataciones de PQ.
- Las actualizaciones de CAP permiten a los Estados notificar el nivel de avance logrado.
- Permite a la OACI determinar el siguiente curso de acción.

Cómo presentar CAP (cont.)



- Diríjase usted al sitio web del marco en línea (OLF) del CMA del USOAP: www.icao.int/usoap.
- Haga clic en el ícono “CAP”.



Cómo presentar CAP (cont.)



Language: English State: Futureland

Welcome: Futureland Student [Logout](#) [Home](#) [Help](#)

State Dashboard Protocol Question (PQ) Finding & Recommendation (F&R) **Corrective Action Plan (CAP)** User Management

Corrective Action Plan (CAP) / Manage Corrective Action Plan

View Mode: **Live mode - Pub** Audit Area: LEG Audit Area Group: All
 SSC: All
 Preview mode - NCMC only
 Live mode - Public Clear

Examine los textos que figuran en “Description” y “Progress Documented” relativos a las PQ pertinentes de la anterior actividad USOAP.

List of Not Satisfactory PQs

Change page: Page 1 of 2, items 1 to 5 of 8.

PQ No.	Question	LEG	CE	CAP	Progress
1.009	Has the State established procedures for the amendment of its specific regulations taking into consideration existing ICAO provisions and future amendments to ICAO Annexes?	LEG	CE-2	33.33%	CAP fully addresses the finding.
1.025	Has the State established and implemented procedures for identifying and notifying differences, if any, to ICAO?	LEG	CE-2	33.33%	CAP fully addresses the finding.
1.027	Does the legislation and/or regulations provide for the issuance of exemptions and has the State established a policy and procedures for their issuance?	LEG	CE-2	0%	CAP fully addresses the finding.
1.055	Has the State established a policy and procedures for enforcement?	LEG	CE-1	100%	CAP fully addresses the finding.
1.105	Has the State established official inspectorate staff credentials?	LEG	CE-3	100%	CAP fully addresses the finding.

Activity: CSA Audit Start Date: 05/05/2008 End Date: 16/05/2008 Report Publication Date: 15/02/2008

Description:
 The Ministry for Transport of Futureland recently established a general procedure for reviewing ICAO State Safety Audit (SSA) findings and preparing CAPs to the ICAO.

Seleccione “Preview mode” (Vista previa) para comenzar a preparar los CAP.

Corrective Action Plan Draft Copy

Est. Imp. Date: 31/07/2010 Rev. Imp. Date: 31/07/2012 Date of Completion: 23/10/2008 Progress Status: 33.3%

State Comment (CAP update from IStars): 31/12/2012 [Save As Draft](#) [Click to Update PQ Status or Attach Evidence](#)

(Rich text editor area)

Corrective Action Plan, Action Items: 31/12/2012 [Submit to ICAO](#)

+ Add new record		Step	Proposed Action	Action Office	Evidence Reference	Est. Imp. Date	Rev. Imp. Date	Date of Completion	Progress
Edit	Delete	1	The procedure "National consultation Process for International Regulations" has been revised and approved.	Ministry of Transport	National consultation Process for International Regulations	30/07/2010	31/07/2012	23/10/2008	Completed
Edit	Delete	2	In order to improve understanding and awareness by all persons involved in identifying and reporting	Ministry of Transport	Instruction on National	23/10/2008	23/10/2008		Completed

Cómo presentar CAP (cont.)



Language: English State: Futureland

Welcome: Futureland Student [Logout](#) [Home](#) [Help](#)

State Dashboard Protocol Question (PQ) Finding & Recommendation (F&R) **Corrective Action Plan (CAP)** User Management

Corrective Action Plan (CAP) / Manage Corrective Action Plan

View Mode: Live mode - Pub Audit Area: LEG Audit Area Group: All

SSC: All PQ/Finding No. Clear

List of Not Satisfactory PQs

Change page: Page 1 of 2, items 1 to 5 of 8.

PQ No.	Question
1.009 LEG CE-2 CAP: <input checked="" type="checkbox"/> 33.33% CAP fully addresses the finding.	Has the State established procedures for the amendment of its specific regulations taking into consideration existing ICAO provisions and future amendments to ICAO Annexes?
1.025 LEG CE-2 CAP: <input checked="" type="checkbox"/> 33.33%	Has the State established and implemented procedures for identifying and notifying differences, if any, to ICAO?

Seleccione la pestaña “Corrective Action Plan (CAP)”.

Consulte la guía y las referencias de la PQ seleccionada. Haga clic dos veces en el número de la PQ (primera columna de la izquierda) y aparecerá la ventana “Review Evidence & References” (examinar pruebas y referencias).

Review Evidence & Reference



Review Evidence:

1) Verify implementation of operations inspectors' procedures as part of the certification process. 2) Sample air operator's training manuals. 3) Sample ACAS training programme and records to confirm implementation.

Reference:

STD A6 Part I App. 2, 2.1.31 GM Doc 8168 Vol I A6 Part III Sec. 3 C3 Att. A

Protocol Finding

Reply to Protocol Question: Status of Implementation: Not satisfy CSA Audit Finding: LEG/01 SSC

Est. Imp. Date: 31/07/2010 Rev. Imp. Date: 31/07/2012 Date of Completion: 23/10/2008 Progress Status: 33.3%

State Comment (CAP update from IStars): 31/12/2012 Save As Draft Click to Update PQ Status or Attach Evidence

Corrective Action Plan, Action Items: 31/12/2012

Add new record

		Step	Proposed Action	Action Office	Evidence Reference	Est. Imp. Date	Rev. Imp. Date	Date of Completion	Progress
Edit	Delete	1	The procedure "National consultation Process for International Regulations" has been revised and approved.	Ministry of Transport	National consultation Process for International Regulations	30/07/2010	31/07/2012	23/10/2008	Completed
Edit	Delete	2	In order to improve understanding and awareness by all persons involved in identifying and reporting	Ministry of Transport	Instruction on National	23/10/2008	23/10/2008		Completed

Cómo presentar CAP (cont.)



Language: English State: Futureland

Welcome: Futureland Student Logout Home Help

State Dashboard Protocol Question (PQ) Find

Corrective Action Plan (CAP) / Manage Corrective

View Mode: Live mode - Pub Audit Area: LEC

SSC: All PQ/Finding No.:

List Of Not Satisfactory PQs

Change page: Page 1 of 1

Show/Hide Extended Columns

Question

1,009
LEG
CE-2
CAP:
33.33%
CAP fully addresses the finding.

Has the State established procedures for the amendment of its specific regulatory consideration existing ICAO provisions amendments to ICAO Annexes?

1,025
LEG
CE-2
CAP:
33.33%
CAP fully addresses the finding.

Has the State established and implemented procedures for identifying and notifying differences, if any, to ICAO?

1,027
LEG
CE-2
CAP:
0%
CAP fully addresses the finding.

Does the legislation and/or regulations provide for the issuance of exemptions and has the State established a policy and procedures for their issuance?

1,055
LEG
CE-1
CAP:
100%
CAP fully addresses the finding.

Has the State established a policy and procedures for enforcement?

1,105
LEG
CE-3
CAP:
100%
CAP fully

Has the State established official inspectorate staff credentials?

Proporcione una fecha de aplicación prevista (EID) que sea realista para cada una de las etapas del CAP.

Introduzca la fecha de conclusión cuando el CAP se haya concluido.

Introduzca el CAP paso por paso, describiendo de manera clara y concisa cada medida y oficina responsable en cada paso.

Corrective Action Plan Draft Copy

Est. Imp. Date: 31/07/2010 Rev. Imp. Date: 31/07/2012 Date Of Completion: 23/10/2008 Progress Status: 33.3%

State Comment (CAP update from IStars): 31/12/2012 [Save As Draft](#) [Click to Update PQ Status or Attach Evidence](#)

Corrective Action Plan, Action Items: 31/12/2012

		Step	Proposed Action	Action Office	Evidence Reference	Est. Imp. Date	Rev. Imp. Date	Date of Completion	Progress
Edit	Delete	1	The procedure "National consultation Process for International Regulations" has been revised and approved.	Ministry of Transport	National consultation Process for International Regulations	30/07/2010	31/07/2012	23/10/2008	Completed
Edit	Delete	2	In order to improve understanding and awareness by all persons involved in identifying and reporting	Ministry of Transport	Instruction on National	23/10/2008	23/10/2008		Completed

[Submit to ICAO](#)

Cómo presentar CAP (cont.)



Language: English State: Futureland

Welcome: Futureland Student [Logout](#) [Home](#) [Help](#)

State Dashboard Protocol Question (PQ) Finding & Recommendation (F&R) **Corrective Action Plan (CAP)** User Management

Corrective Action Plan (CAP) / Manage Corrective Action Plan

View Mode: Live mode - Pub Audit Area: LEG Audit Area Group: All Critical Element: All CAP Review Result: All CAP Review Status: All

SSC: All PQ/Finding No. [Clear](#)

List of Not Satisfactory PQs

PQ No.	Question	Progress
1.009 LEG CE-2 CAP: <input checked="" type="checkbox"/> 33.33% CAP fully addresses the finding.	Has the State established procedures for amendment of its specific regulations in consideration of existing ICAO provisions and amendments to ICAO Annexes?	
1.025 LEG CE-2 CAP: <input checked="" type="checkbox"/> 33.33% CAP fully addresses the finding.	Has the State established and implemented procedures for identifying and notifying differences, if any, to ICAO?	
1.027 LEG CE-2 CAP: <input checked="" type="checkbox"/> 0% CAP fully addresses the finding.	Does the legislation and/or regulations provide for the issuance of exemptions and has the State established a policy and procedures for their issuance?	
1.055 LEG CE-1 CAP: <input checked="" type="checkbox"/> 100% CAP fully addresses the finding.	Has the State established a policy and procedures for enforcement?	
1.105 LEG CE-3 CAP: <input checked="" type="checkbox"/> 100% CAP fully	Has the State established official inspectorate staff credentials?	

Protocol Finding

Reply to Protocol Question: Status of Implementation: Not satisfact CSA Audit Finding: LEG/01 SSC:

Change page: Page 1 of 2, items 1 to 5 of 8.

Show/Hide Extended Columns

Corrective Action Plan

Est. Imp. Date: 31/07/2010 Rev. Imp. Date: 31/07/2012 Date of Completion: 23/10/2008 Progress Status: 33.3%

State Comment (CAP update from IStars): 31/12/2012 [Save As Draft](#) [Click to Update PO Status or Attach Evidence](#)

Submit to ICAO

+ Add new record		Step	Proposed Action	Action Office	Evidence Reference	Est. Imp. Date	Rev. Imp. Date	Date of Completion	Progress
Edit	Delete	1	The procedure "National consultation Process for International Regulations" has been revised and approved.	Ministry of Transport	National consultation Process for International Regulations	30/07/2010	31/07/2012	23/10/2008	Completed
Edit	Delete	2	In order to improve understanding and awareness by all persons involved in identifying and reporting	Ministry of Transport	Instruction on National	23/10/2008	23/10/2008		Completed

De ser necesario, introduzca sus comentarios sobre el CAP en el campo destinado a los comentarios del Estado ("State Comments"). Esta acción es opcional.

Cómo presentar CAP (cont.)



Language: English State: Futureland Welcome: Futureland Student Logout Home Help

State Dashboard Protocol Question (PQ) Finding & Recommendation (F&R) **Corrective Action Plan (CAP)** User Management

Corrective Action Plan (CAP) / Manage Corrective Action Plan

View Mode: Live mode - Pub Audit Area: LEG Audit Area Group: A
SSC: All PQ/Finding No. Clear

List of Not Satisfactory PQs

PQ No.	Question
1,009 LEG CE-2 CAP: <input checked="" type="checkbox"/> 33.33% CAP fully addresses the finding.	Has the State established procedures for the amendment of its specific regulations taking into consideration existing ICAO provisions and future amendments to ICAO Annexes?
1,025 LEG	Has the State established and implemented procedures for identifying and notifying differences, if any, to

Diríjase hacia la parte de abajo de la página y haga clic en el enlace **“Self-Assessment”** (autoevaluación) para abrir el campo **“Self-Assessment”**.

Presentar a la OACI cuando esta acción esté finalizada y el CAP aborde plenamente la constatación basada en PQ.

CAP fully addresses the finding.

Page size: 6 Displaying page 1 of 2, items 1 to 6 of 7

Page: 1 of 2

Comments by ICAO HQ:
The corrective action plan submitted by the State does not fully addresses this ICAO finding and recommendation. Jerome

Self-Assessment

1,105 LEG CE-3 CAP: <input checked="" type="checkbox"/> 100% CAP fully addresses the finding.	Has the State established official inspectorate staff credentials?
--	--

Corrective Action Plan, Action Items: 31/12/2012

+ Add new record		Step	Proposed Action	Action Office	Evidence Reference	Est. Imp. Date	Rev. Imp. Date	Date of Completion	Progress
Edit	Delete	1	The procedure "National consultation Process for International Regulations" has been revised and approved.	Ministry of Transport	National consultation Process for International Regulations	30/07/2010	31/07/2012	23/10/2008	Completed
Edit	Delete	2	In order to improve understanding and awareness by all persons involved in identifying and reporting	Ministry of Transport	Instruction on National	23/10/2008	23/10/2008		Completed

Ejemplo



Language: English State: Futureland

Welcome: Futureland Student Logout Home Help

State Dashboard Protocol Question (PQ) Finding & Recommendation (F&R) **Corrective Action Plan (CAP)** User Management

Corrective Action Plan (CAP) / Manage Corrective Action Plan

View Mode: Live mode - Pub Audit Area: LEG Audit Area Group: All

SSC: All PQ/Finding No. Clear

List of Not Satisfactory PQs

PQ No.	Question
1,009 LEG CE-2 CAP: <input checked="" type="checkbox"/> 33.33% CAP fully addresses the finding.	Has the State established procedures for the amendment of its specific regulations taking into consideration existing ICAO provisions and future amendments to ICAO Annexes?
1,025 LEG CE-2 CAP: <input checked="" type="checkbox"/> 33.33%	Has the State established and implemented procedures for identifying and notifying differences, if any, to ICAO?

Protocol Finding

Activity: CSA
Description: The Ministry of Transport has not been systematic and timely in amending of the State letter of Intent (SALIs). How

Ejemplo
PQ 5.453 (CE-8)
¿Inicia la DIA una evaluación especial o impone restricciones especiales a las operaciones si la información obtenida durante la supervisión de la fiabilidad indica una degradación del nivel de seguridad operacional?

Has the State established requirements regarding documents to be carried on board an aircraft in compliance with Article 29 of the Chicago Convention?	Verify that the documents carried on board an aircraft in compliance with Article 29 of the Chicago Convention are valid and up to date.
Are significant differences stated in the AIP as per the requirements of Annex 15?	Review of AIP and significant differences to ICAO Annex 15. Verify that the AIP and significant differences are up to date and comply with the requirements of Annex 15.

Guía

Examinar ejemplos de medidas tomadas.

Nota.— Marcar como “No satisfactorio” en forma automática si no se ejerce vigilancia alguna de los programas de fiabilidad.

Referencia
GM Doc 9760

Corrective Action Plan

St. Imp. Date: 31/07/2010

Add new record

Delete

Delete

Delete

Delete

Delete

Delete

Delete

Delete

Delete

Delete

Delete

Delete

Date	Rev. Imp. Date	Date of Completion	Progress	
	30/07/2010	31/07/2012	23/10/2008	Completed
	23/10/2008	23/10/2008		Completed

Ejemplo (cont.)



Language: English State: Futureland

Welcome: Futureland Student [Logout](#) [Home](#) [Help](#)

State Dashboard Protocol Question (PQ) Finding & Recommendation (F&R) **Corrective Action Plan (CAP)** User Management

Corrective Action Plan (CAP) / Manage Corrective Action Plan

View Mode: Live mode - Pub

SSC: All PQ/Finding No.

List of Not Satisfactory PQs

Change page: 1 2 3

Show/Hide External Question

1.009 LEG CE-2 CAP: <input checked="" type="checkbox"/> 33.33% CAP fully addresses the finding.	Has the State established procedures for the amendment of its specific regulations taking into consideration existing ICAO provisions and future amendments to ICAO Annexes?
1.025 LEG CE-2 CAP: <input checked="" type="checkbox"/> 33.33% CAP fully addresses the finding.	Has the State established and implemented procedures for identifying and notifying differences, if any, to ICAO?
1.027 LEG CE-2 CAP: <input checked="" type="checkbox"/> 0% CAP fully addresses the finding.	Does the legislation and/or regulations provide for the issuance of exemptions and has the State established a policy and procedures for their issuance?
1.055 LEG CE-1 CAP: <input checked="" type="checkbox"/> 100% CAP fully addresses the finding.	Has the State established a policy and procedures for enforcement?
1.105 LEG CE-3 CAP: <input checked="" type="checkbox"/> 100% CAP fully	Has the State established official inspectorate staff credentials?

“Description” y “Progress Documented” por la OACI:

“La CAA no inicia una evaluación especial o impone restricciones especiales a las operaciones si la información obtenida durante la supervisión de la fiabilidad indica una degradación del nivel de seguridad operacional.”

Description:

The Ministry for Transport of Futureland recently established a general procedure for reviewing ICAO State Letters, amending its regulations as needed, and notifying ICAO of differences with the ICAO SARPs. However:

Progress Documented:



Corrective Action Plan

Draft Copy

Est. Imp. Date: 31/07/2010 Rev. Imp. Date: 31/07/2012 Date of Completion: 23/10/2008 Progress Status: 33.3%

State Comment (CAP update from IStars): 31/12/2012 [Save As Draft](#) [Click to Update PQ Status or Attach Evidence](#)

Rich text editor area with formatting tools (bold, italic, underline, link, unlink, list, indent, outdent, undo, redo, print, insert link, insert image).

[Submit to ICAO](#)

Corrective Action Plan, Action Items: 31/12/2012

+ Add new record		Step	Proposed Action	Action Office	Evidence Reference	Est. Imp. Date	Rev. Imp. Date	Date of Completion	Progress
Edit	Delete	1	The procedure "National consultation Process for International Regulations" has been revised and approved.	Ministry of Transport	National consultation Process for International Regulations	30/07/2010	31/07/2012	23/10/2008	Completed
Edit	Delete	2	In order to improve understanding and awareness by all persons involved in identifying and reporting	Ministry of Transport	Instruction on National	23/10/2008	23/10/2008		Completed

Ejemplo de CAP completado (cont.)



Language: English State: Futureland

Welcome: Futureland Student [Logout](#) [Home](#) [Help](#)

State Dashboard Protocol Question (PQ) Finding & Recommendation (F&R) **Corrective Action Plan (CAP)** User Management

Corrective Action Plan (CAP) / Manage Corrective Action Plan

View Mode: Live mode - Pub Audit Area: LEG Audit Area Group: All Critical Element: All CAP Review Result: All CAP Review Status: All

SSC: All Plan de medidas correctivas, medidas a tomar: 31/12/2012

Step	Proposed Action	Action Office	Evidence Reference	Est. Imp. Date	Rev. Imp. Date	Date of Completion	Progress
1	Programar la asistencia de AIR a todas las futuras reuniones de los explotadores de servicios aéreos sobre fiabilidad .	AID		25/6/2013			Concluido
2	Recopilar y analizar los informes existentes de observación de la fiabilidad .	AID		13/7/2013			Concluido
3	Establecer un proceso para garantizar el inicio de una evaluación especial o imposición de restricciones operacionales en casos de degradación del nivel de seguridad operacional.	AID		11/10/2013			25%
4	Describir las restricciones operacionales a tomar.	AID		11/10/2013			No se ha iniciado

Submit to ICAO

Corrective Action Plan, Action Items: 31/12/2012

+ Add new record		Step	Proposed Action	Action Office	Evidence Reference	Est. Imp. Date	Rev. Imp. Date	Date of Completion	Progress
Edit	Delete	1	The procedure "National consultation Process for International Regulations" has been revised and approved.	Ministry of Transport	National consultation Process for International Regulations	30/07/2010	31/07/2012	23/10/2008	Completed
Edit	Delete	2	In order to improve understanding and awareness by all persons involved in identifying and reporting	Ministry of Transport	Instruction on National	23/10/2008	23/10/2008		Completed

Cómo agregar nuevos CAP



PO No.	Question
5.001 AIR CE-2 N/S	Has the State promulgated airworthiness regulations to enable the State to implement the airworthiness-related provisions of ICAO Annexes 6, 7, 8 and 16?
5.003 AIR CE-2 S	Has the State issued a comprehensive and detailed national code of airworthiness or adopted and promulgated the code of another State, containing the full scope and extent of details necessary as the basis for the certification/acceptance of individual aircraft?
5.005 AIR CE-2 N/S	Has the State developed and implemented procedures for the amendment of its enabling regulations and national standards?
5.007 AIR CE-2 N/S	Has the State developed and implemented a procedure for identifying and notifying differences, if any, to ICAO?
5.009 AIR CE-2 N/A	If the State has adopted airworthiness regulations from another State, has it established and implemented a procedure for ensuring that these regulations comply with relevant ICAO Annexes initially and on an ongoing basis subsequent to an Annex amendment or an amendment by the originating State?
5.011 AIR CE-2 S	Are copies of the airworthiness enabling regulations (including directives, orders, circulars, publications, etc.) applicable in the State readily available to the public?

1 – Seleccione la PQ relacionada con el CAP que va a introducirse.

2 – Haga clic en “Add new record”.

Corrective Action Plan, Action Items:

+ Add new record Refresh

Step	Proposed Action	Action Office	Evidence Reference	Est.Imp.Date	Rev. Imp. Date	Date of Completion	Progress
No records to display.							

Corrective Action Plan Draft Copy

Est.Imp.Date Rev. Imp. Date Date Of Completion Progress Status 0%

State Comment: 16/12/2011 Save As Draft [Click to Update PQ Status or Attach Evidence](#)

Cómo agregar nuevos CAP (cont.)



Complete los siguientes campos:

- **Número de etapa:** Un CAP puede tener varias etapas según la complejidad de las medidas. Para facilitar la evaluación y validación del CAP es preciso que cada medida se describa en una etapa diferente.
- **Fecha de aplicación prevista:** La fecha prevista deberá ser la fecha en que se estima que la etapa estará plenamente aplicada.
- **Situación del avance**
- **Oficina responsable de tomar medidas** es la oficina responsable de concluir esta etapa.

Corrective Action Plan, Action Items:

+ Add new record Refresh

Step	Proposed Action	Action Office	Evidence Reference	Est. Imp. Date	Rev. Imp. Date	Date of Completion	Progress
------	-----------------	---------------	--------------------	----------------	----------------	--------------------	----------

Step Number * Est. Imp. Date *

Rev. Imp. Date Date Of Completion Progress Status

Action Office *:

Proposed Action *:

Evidence Reference:

No records to display

Save As Draft Close

Cómo agregar nuevos CAP (cont.)



Complete los siguientes campos:

- **“Proposed Action” (medidas propuestas):** Asegúrese de proporcionar una medida propuesta para la etapa correspondiente.
- **“Evidence Reference” (referencia relativa a las pruebas):** Deberá indicarse cada referencia en forma clara (es decir, capítulo, sección, párrafo, etc.).
- **Haga clic en “Save as Draft” (guardar como borrador)**
- **Haga clic en “Close” (cerrar):** Para volver a la página anterior y añadir nuevas etapas.

Corrective Action Plan, Action Items:

+ Add new record Refresh

Step	Proposed Action	Action Office	Evidence Reference	Est.Imp.Date	Rev. Imp. Date	Date of Completion	Progress
------	-----------------	---------------	--------------------	--------------	----------------	--------------------	----------

Step Number * Est. Imp. Date *

Rev. Imp. Date Date Of Completion Progress Status

Action Office *:

Proposed Action *:

Evidence Reference:

No records to display.

Cómo agregar nuevos CAP (cont.)



Evidence Reference:

B *I* U

Haga clic en este enlace para presentar una autoevaluación y adjuntar pruebas.

Introduzca sus comentarios, de ser necesario. Este campo es opcional.

No records to display.

Corrective Action Plan

Est.Imp.Date

State Comment: 16/12/2011 [Click to Update PQ Status or Attach Evidence](#) Copy

B *I* U

Cómo actualizar CAP

Cómo actualizar CAP



Haga clic en “Edit” (editar) para revisar o actualizar los CAP.

Seleccione la PQ cuyo CAP va a ser revisado o actualizado.

Nota.— Si una etapa es demasiado larga, puede dividirse en etapas múltiples. Para introducir etapas adicionales, véanse las instrucciones descritas en la sección anterior.

Step	Proposed Action	Action Office	Evidence Reference	Est.Imp.Date	Rev. Imp. Date	Date of Completion	Progress
1	Verify compliance of regulations with Annexes - Action office: SACAA/DOT/ SAWS - Estimated Implementation Date: 31 May 2008 Amend regulations to incorporate the amendments of the Annexes. - Action office: SACAA/DOT/ SAWS - Estimated Implementation Date: 31 December 2008. Review and adapt the regulations amendment process						Not started
	DOT & Agencies - Estimated Implementation Date: Completed Review liaison with all agencies (SACAA, ATNS, ACSA, SAWS, ICASA, SAR) iro the identification and notification of differences and amend procedures to ensure effectiveness. - Action office: DOT & Agencies - Estimated Implementation Date: 30 April 2008 Identify regional differences in Regional Supplementary Procedures and incorporate into South African regulations. - Action office: SACAA, ATNS - Estimated Implementation Date: 31 December 2008. Submit regulations to ICAO for approval						

State Comment: 16/12/2011 [Save As Draft](#) [Click to Update PQ Status or Attach Evidence](#)

B I U

[Submit to ICAO](#)

Cómo actualizar CAP (cont.)



Complete los siguientes campos:

- **“Step Number” (número de etapa):** Un CAP puede tener varias etapas según la complejidad de las medidas. Para facilitar la evaluación y validación del CAP es preciso que cada medida se describa en una etapa diferente.
- **“Revised Implementation Date” (fecha de aplicación revisada):** Sobre la base del CAP actualizado, si la EID ya no es realista, deberá introducirse una fecha de aplicación revisada.
- **“Date of Completion” (fecha de conclusión):** Deberá introducirse la fecha en que se concluyó la medida.
- **Progress Status**
- **Action Office**

Corrective Action Plan, Action Items: 16/12/2011

+ Add new record

Step	Proposed Action	Action Office	Evidence Reference	Est.Imp.Date	Rev. Imp. Date	Date of Completion	Progress
Edit	Delete	1	1. Develop procedure to ensure allocation of aircraft registration like ZS-PAN/SOS etc are not allocated - Action office: GM:AS - Estimated Implementation Date: Completed 2. Amend MOP - Action office: GM:AS - Estimated Implementation Date: Completed 3. MOP Approval - Action office: GM:AS - Estimated Implementation Date: Completed 4. Negotiate allocation of new registration marks iro ZS-PAN - Action office: GM:AS - Estimated Implementation Date: Completed 5. Negotiate allocation of new registration marks iro ZS-SOS - Action office: GM:ASO - Estimated Implementation Date: Completed				Not started

Step Number * 1 Est. Imp. Date * ev. Imp. Date Date Of Completion

Progress Status Not started

Action Office *

Proposed Action *:

1. Develop procedure to ensure allocation of aircraft registration like ZS-PAN/SOS etc are not allocated - Action office: GM:AS - Estimated Implementation Date: Completed 2. Amend MOP - Action office: GM:AS - Estimated Implementation Date: Completed 3. MOP Approval - Action office: GM:AS - Estimated Implementation Date: Completed 4. Negotiate allocation of new registration marks iro ZS-PAN - Action office: GM:AS - Estimated Implementation Date: Completed 5. Negotiate allocation of new registration marks iro ZS-SOS - Action office: GM:ASO - Estimated Implementation Date: 3 April 2008

Evidence Reference:

Save As Draft Close

Corrective Action Plan Draft Copy

Est.Imp.Date Rev. Imp. Date Date Of Completion Progress Status 0%

State Comment: 16/12/2011 Save As Draft Click to Update PQ Status or Attach Evidence

Submit to ICAO

Cómo actualizar CAP (cont.)



Complete los siguientes campos:

- **“Proposed Action” (Actualizar la medida propuesta):** Asegúrese de proporcionar una medida propuesta actualizada para la etapa correspondiente.
- **“Evidence Reference” (referencia relativa a las pruebas):** Deberá indicarse cada referencia en forma clara y detallada (es decir, capítulo, sección, párrafo, etc.).
- **“Save as Draft” (guardar como borrador)**
- **“Close” (cerrar):** Para volver a la página anterior y editar otras etapas.
- **“Submit to ICAO” (enviar a la OACI):** Cuando se han editado todas las etapas y están preparadas para su envío.

Corrective Action Plan, Action Items: 16/12/2011

+ Add new record

	Step	Proposed Action	Action Office	Evidence Reference	Est.Imp.Date	Rev. Imp. Date	Date of Completion	Progress
Edit	Delete 1	1. Develop procedure to ensure allocation of aircraft registration like ZS-PAN/SOS etc are not allocated - Action office: GM:AS - Estimated Implementation Date: Completed 2. Amend MOP - Action office: GM:AS - Estimated Implementation Date: Completed 3. MOP Approval - Action office: GM:AS - Estimated Implementation Date: Completed 4. Negotiate allocation of new registration marks iro ZS-PAN - Action office: GM:AS - Estimated Implementation Date: Completed 5. Negotiate allocation of new registration marks iro ZS-SOS - Action office: GM:ASO - Estimated Implementation Date: 3 April 2008						Not started

Step Number * 1 Est. Imp. Date * Rev. Imp. Date Date Of Completion

Progress Status Not started

Action Office *:

Proposed Action *:

1. Develop procedure to ensure allocation of aircraft registration like ZS-PAN/SOS etc are not allocated - Action office: GM:AS - Estimated Implementation Date: Completed 2. Amend MOP - Action office: GM:AS - Estimated Implementation Date: Completed 3. MOP Approval - Action office: GM:AS - Estimated Implementation Date: Completed 4. Negotiate allocation of new registration marks iro ZS-PAN - Action office: GM:AS - Estimated Implementation Date: Completed 5. Negotiate allocation of new registration marks iro ZS-SOS - Action office: GM:ASO - Estimated Implementation Date: 3 April 2008

Evidence Reference:

Save As Draft Close

Corrective Action Plan Draft Copy

Est.Imp.Date Rev. Imp. Date Date Of Completion Progress Status 0%

State

Nota. — Para adjuntar pruebas, véanse las instrucciones descritas anteriormente.

Submit to ICAO

- Cómo realizar una autoevaluación de PQ.**
- Cómo presentar CAP.**
- Cómo actualizar CAP.**



North American
Central American
and Caribbean
(NACC) Office
Mexico City

South American
(SAM) Office
Lima

**ICAO
Headquarters
Montreal**

Western and
Central African
(WACAF) Office
Dakar

European and
North Atlantic
(EUR/NAT) Office
Paris

Middle East
(MID) Office
Cairo

Eastern and
Southern African
(ESAF) Office
Nairobi

Asia and Pacific
(APAC) Office
Bangkok

¡Gracias!