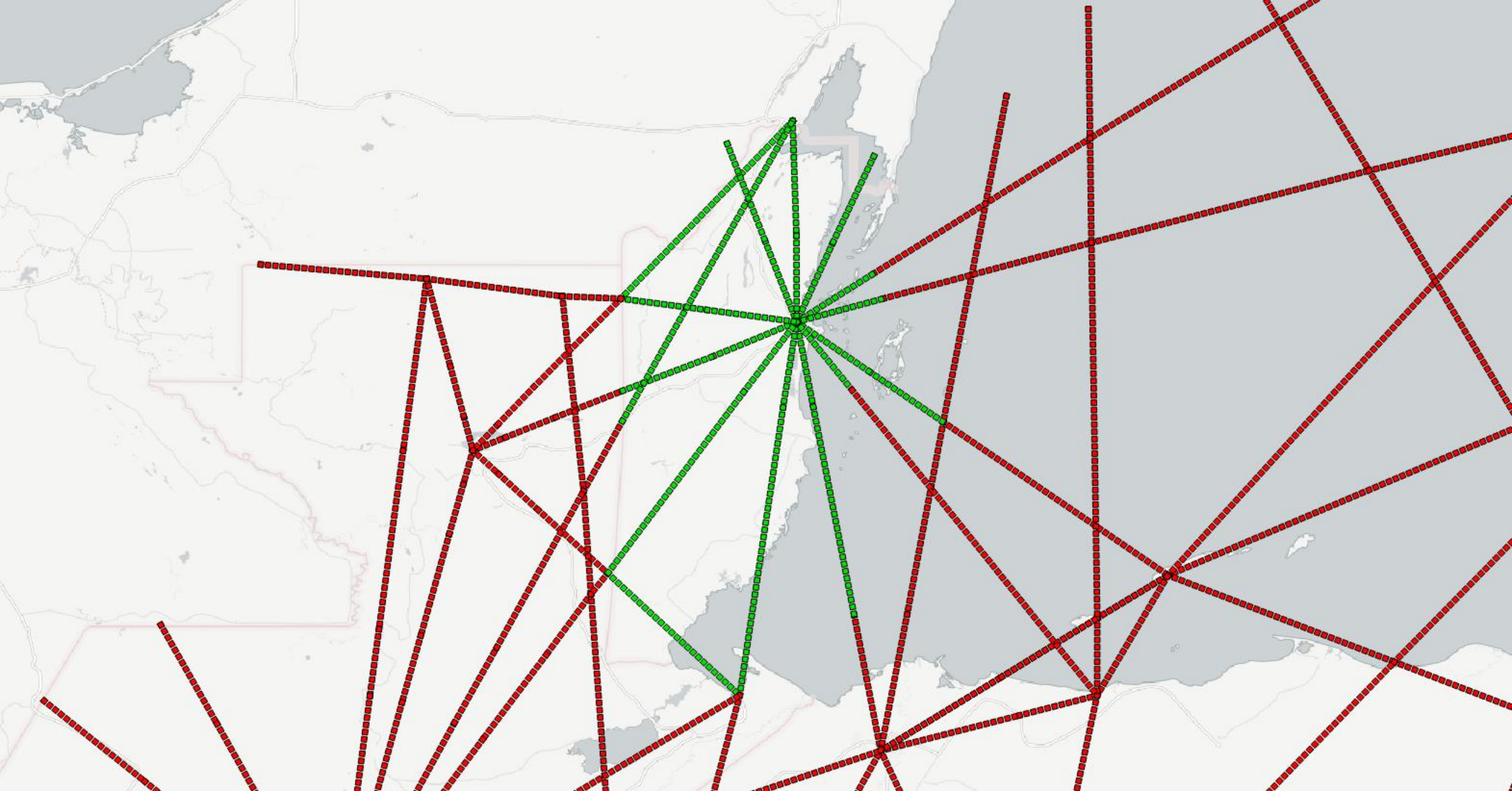
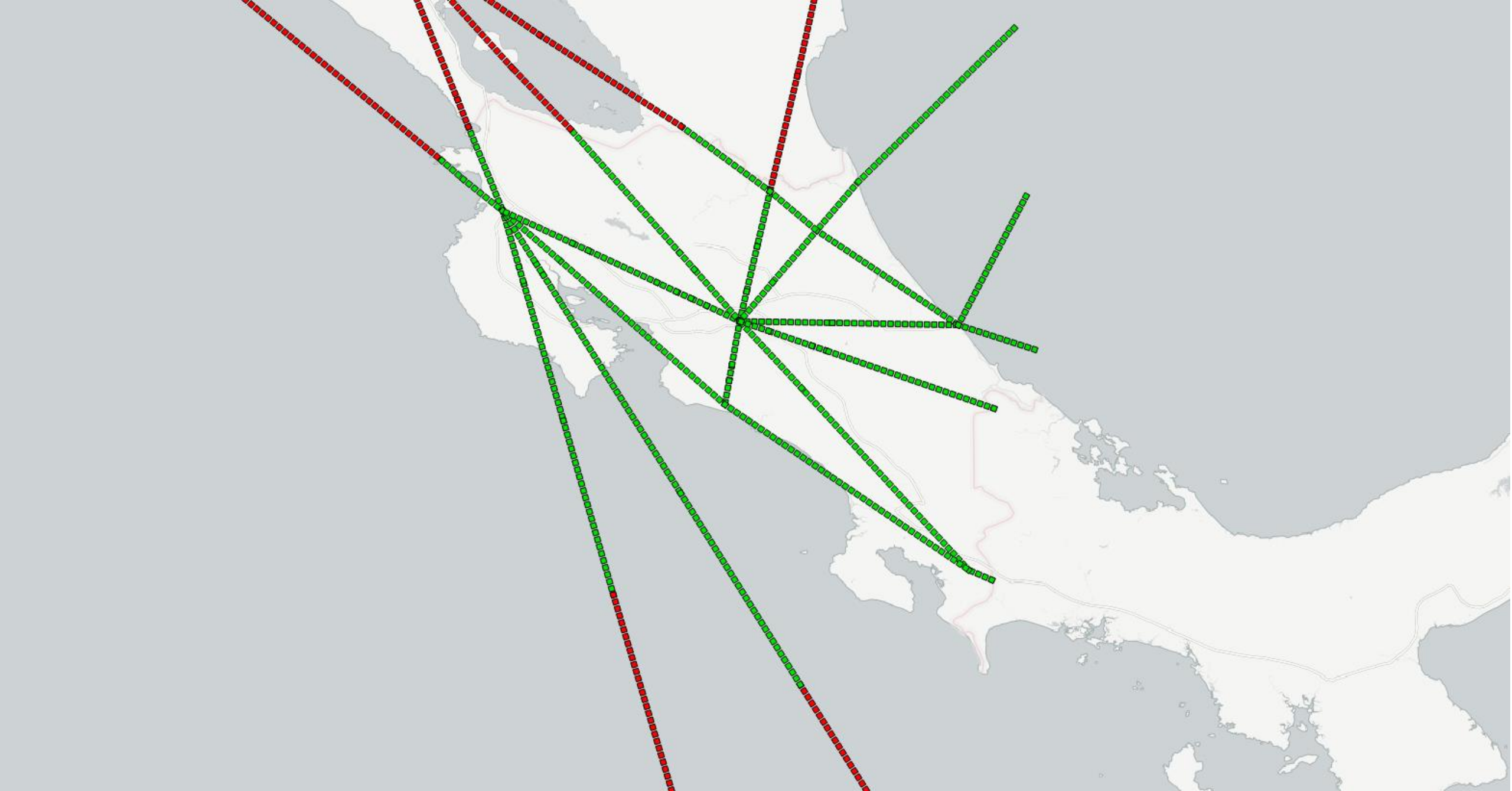


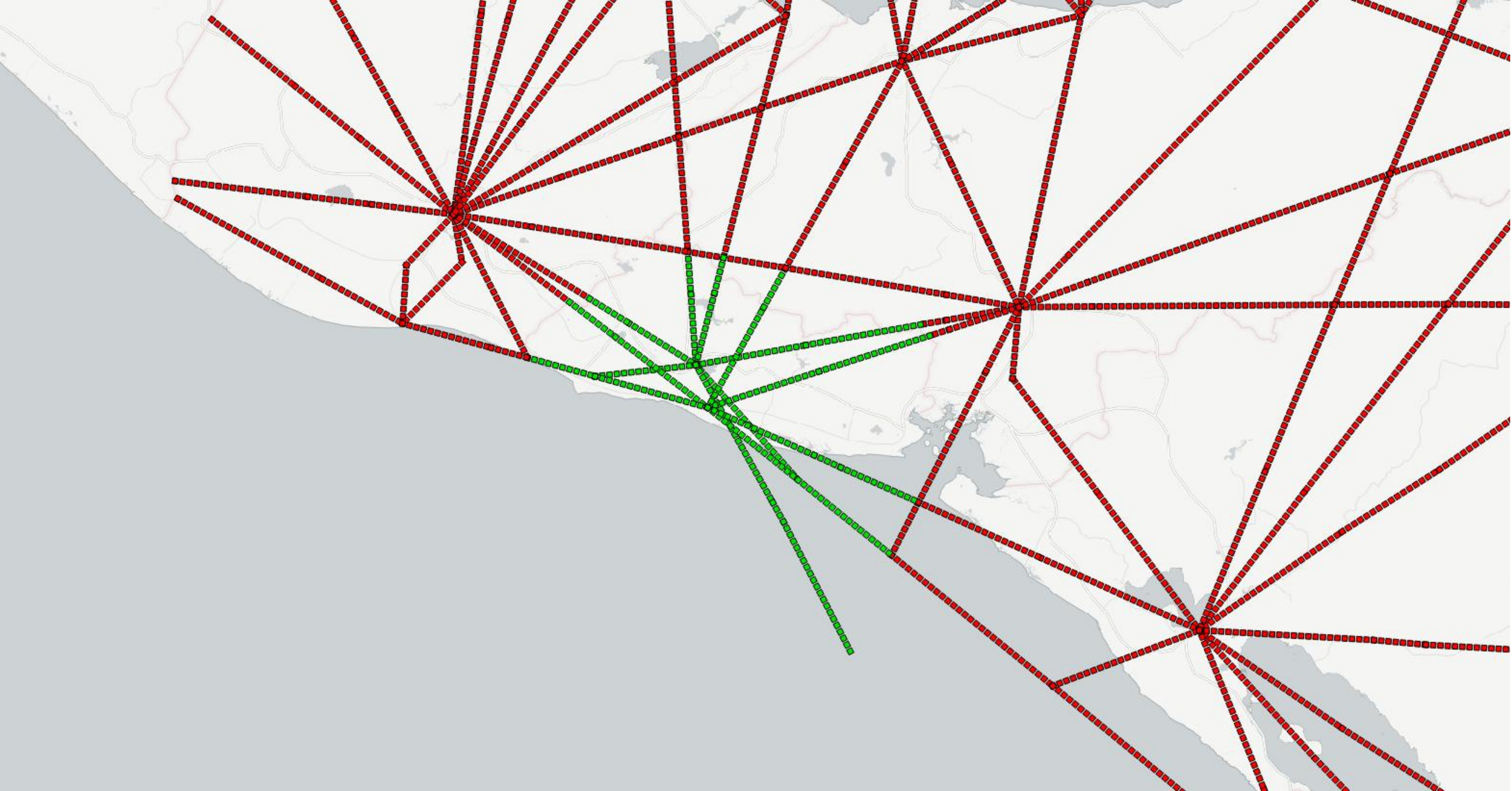
# RUTAS ESPACIO AÉREO INFERIOR



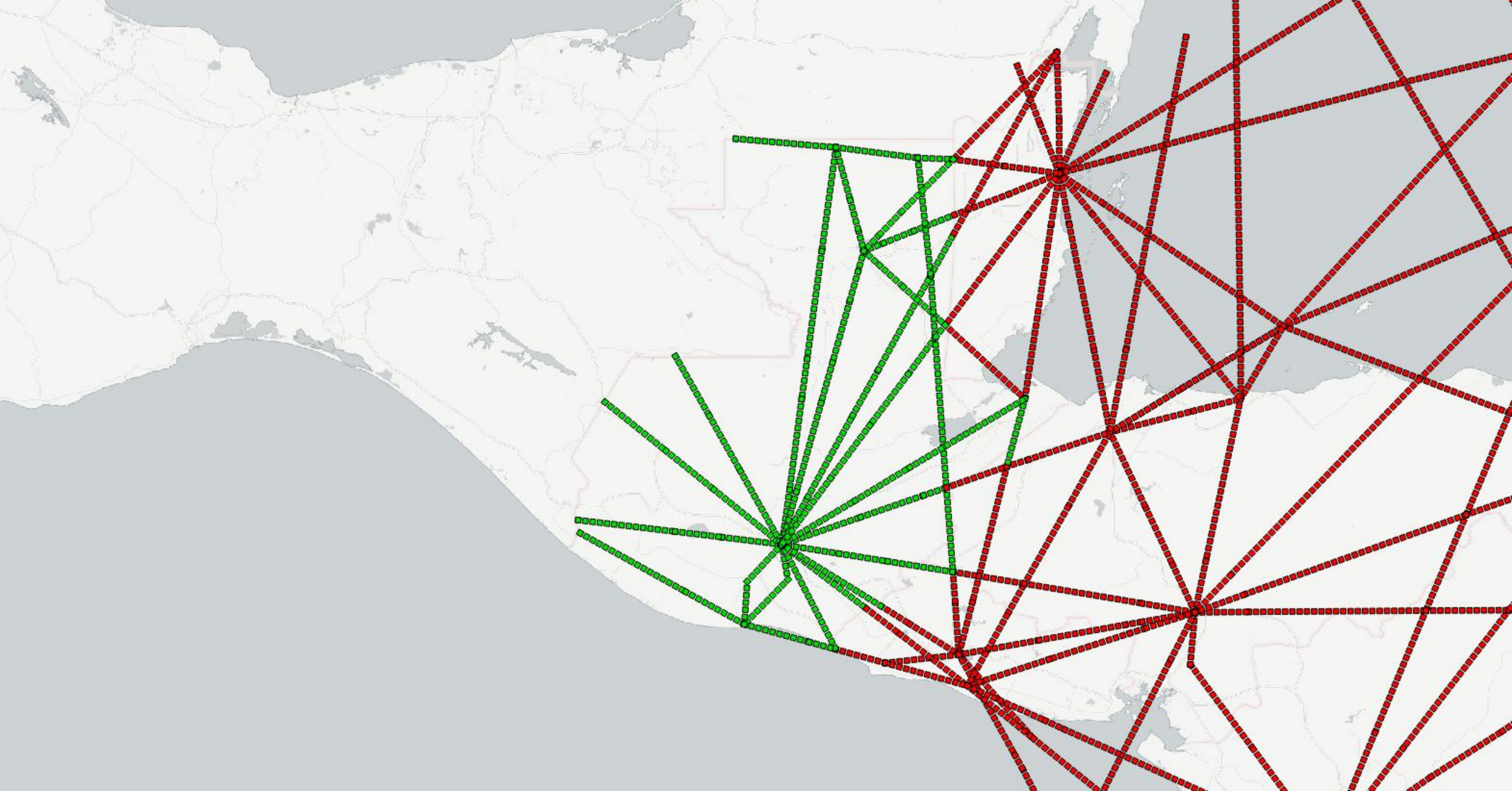
RUTAS BELICE – ESPACIO AÉREO INFERIOR



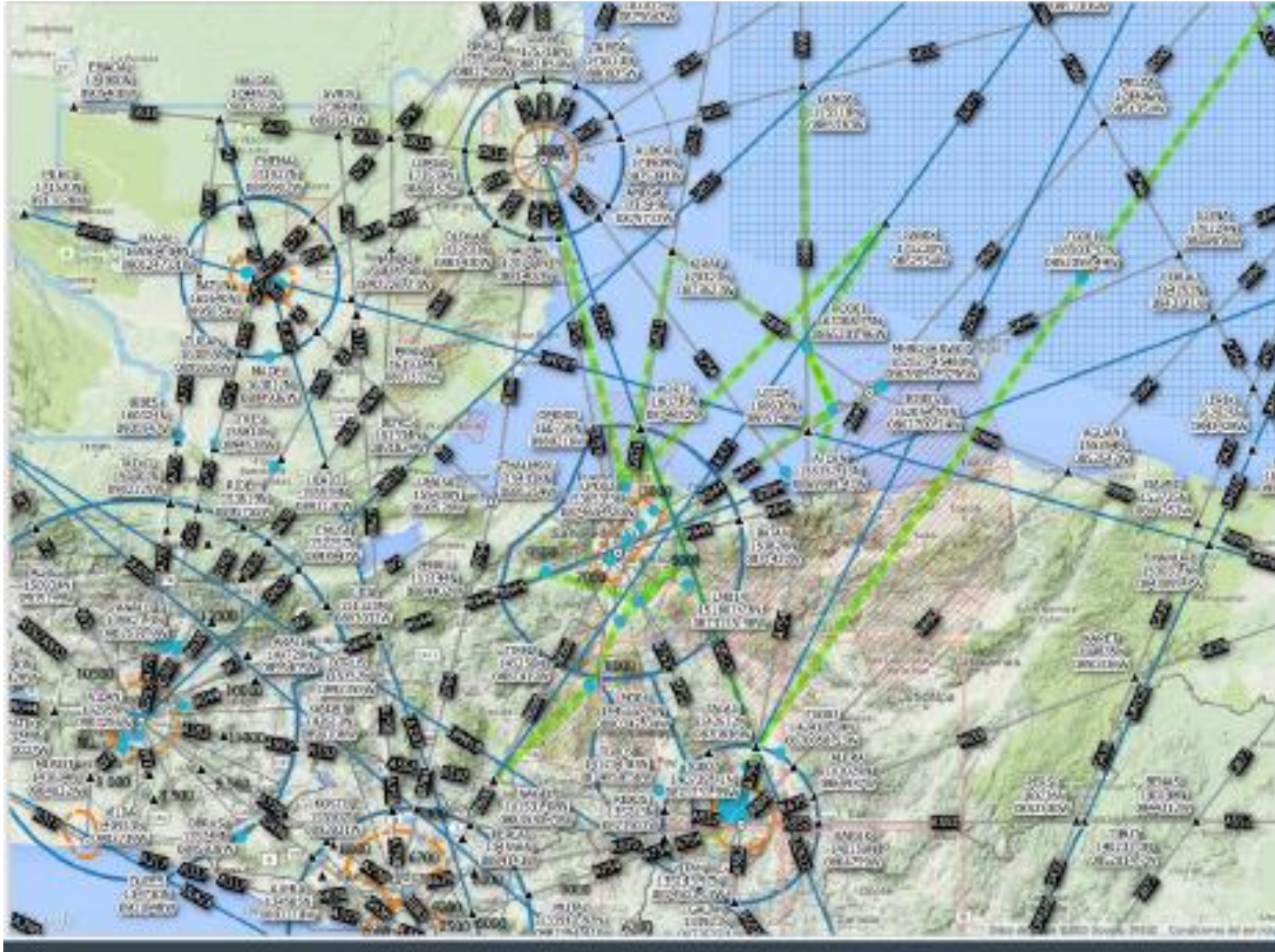
RUTAS COSTA RICA – ESPACIO AÉREO INFERIOR



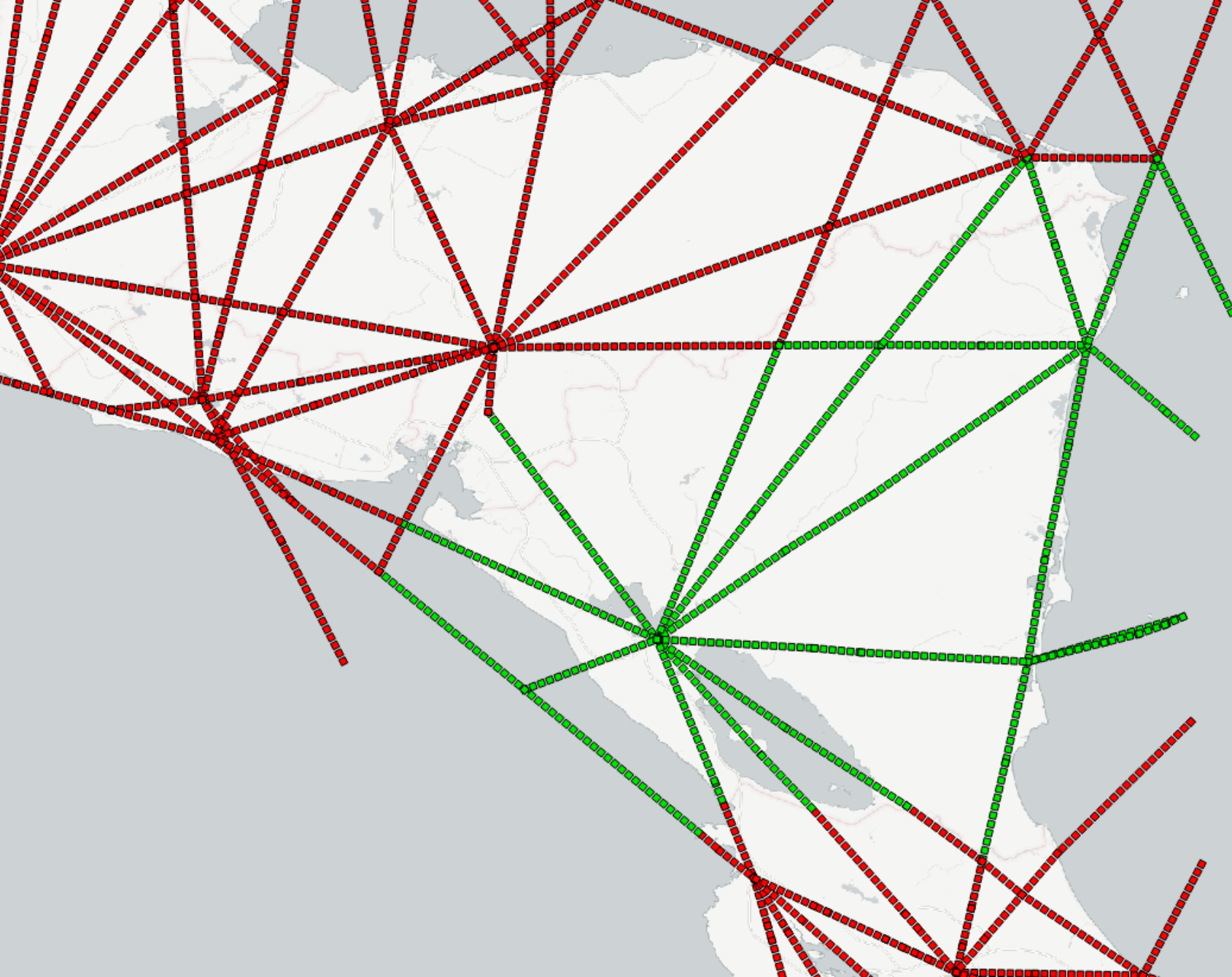
RUTAS EL SALVADOR – ESPACIO AÉREO INFERIOR



RUTAS GUATEMALA – ESPACIO AÉREO INFERIOR



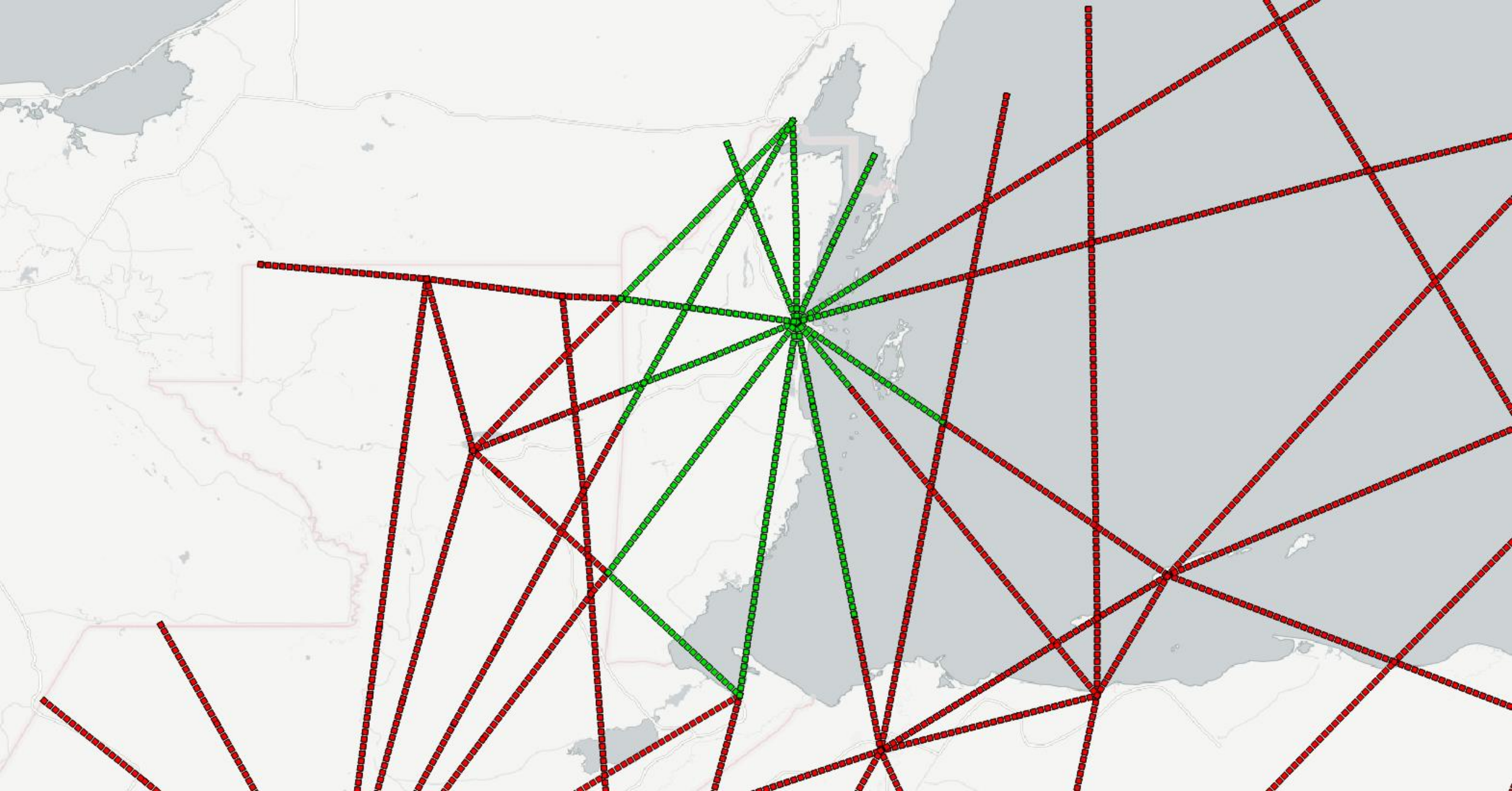
RUTAS HONDURAS – PUBLICA TODA INFORMACIÓN ENR DE ESPACIO AÉREO INFERIOR



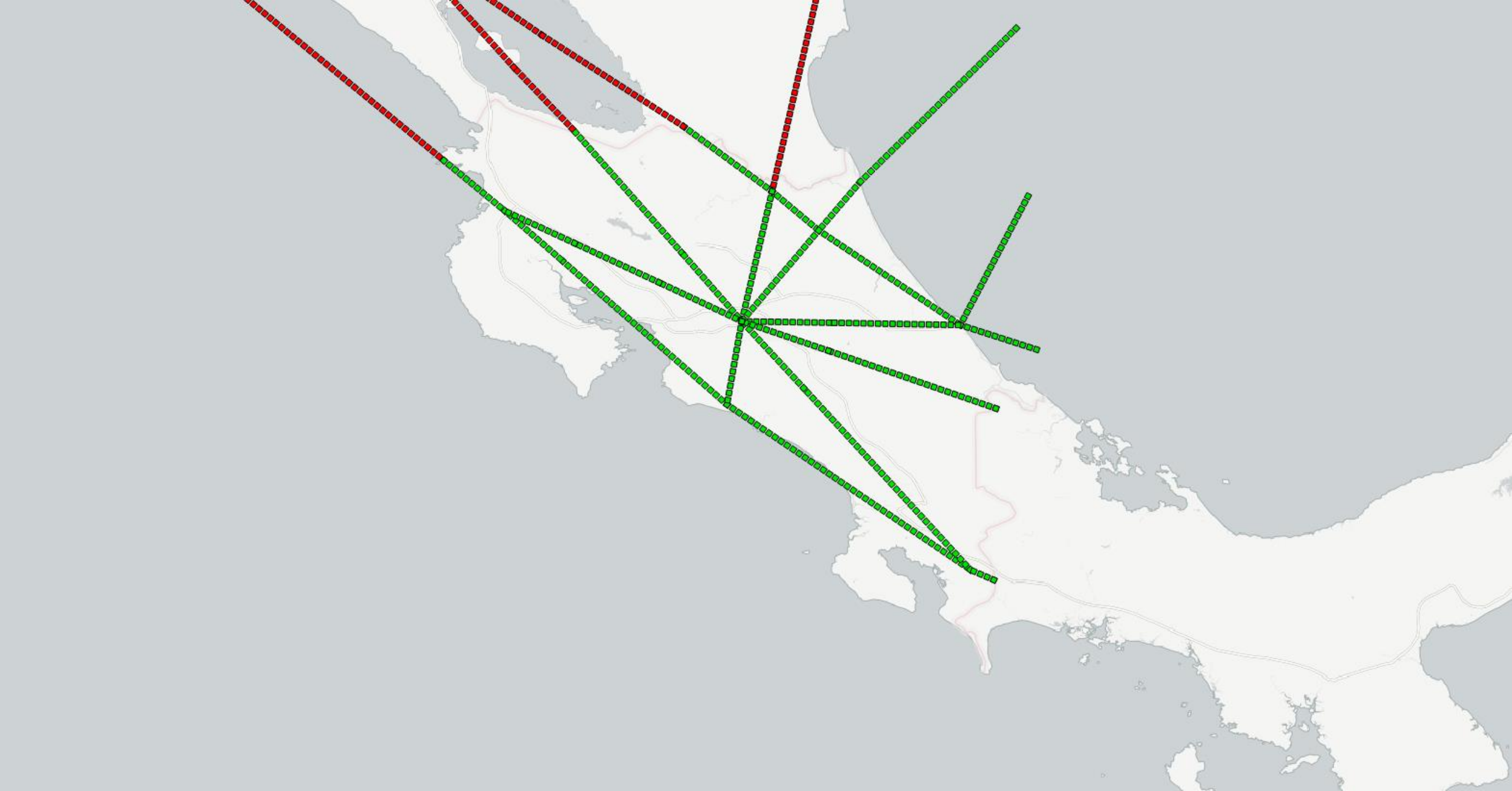
RUTAS NICARAGUA – ESPACIO AÉREO INFERIOR

# RUTAS ESPACIO AÉREO SUPERIOR

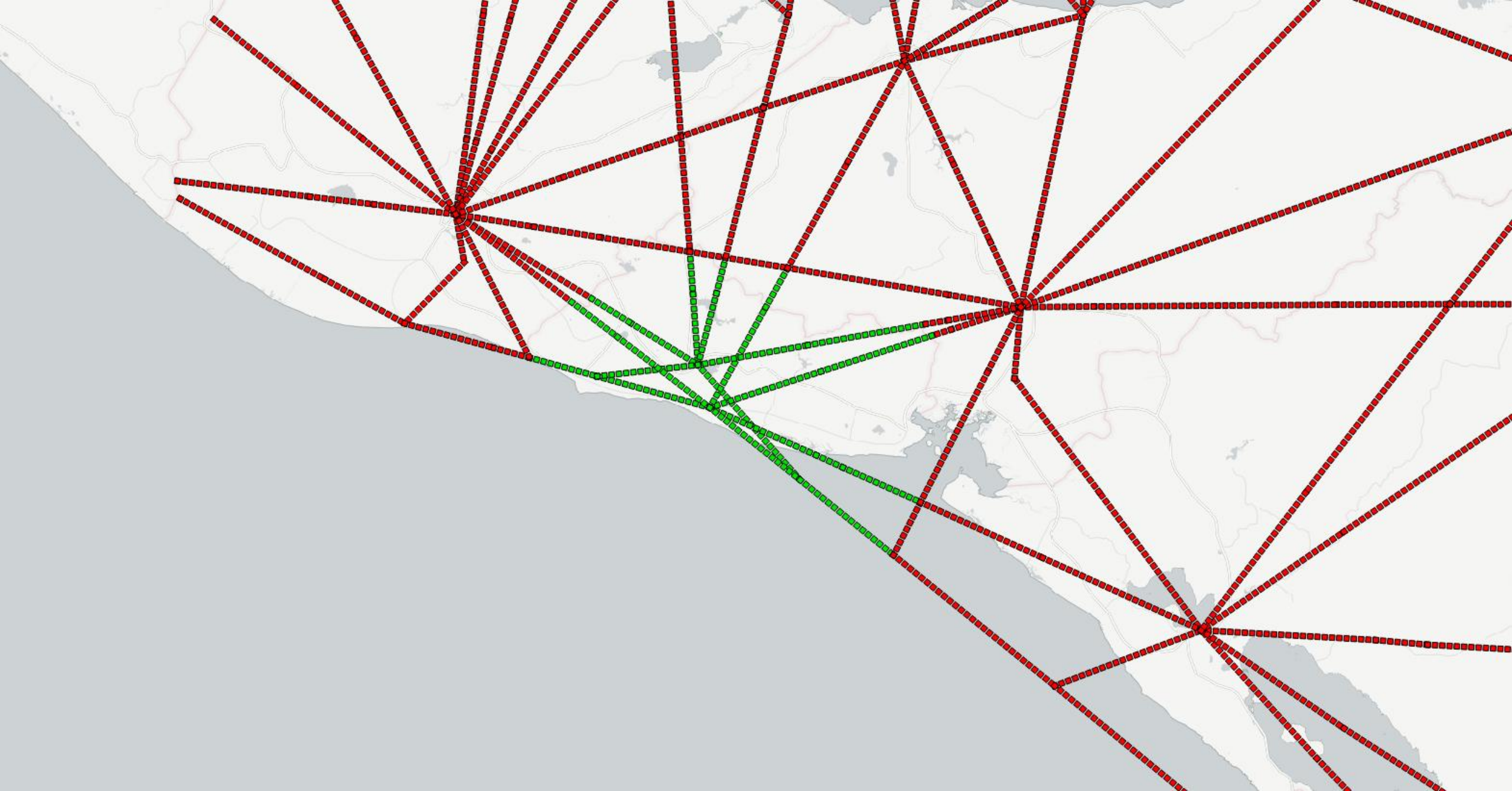




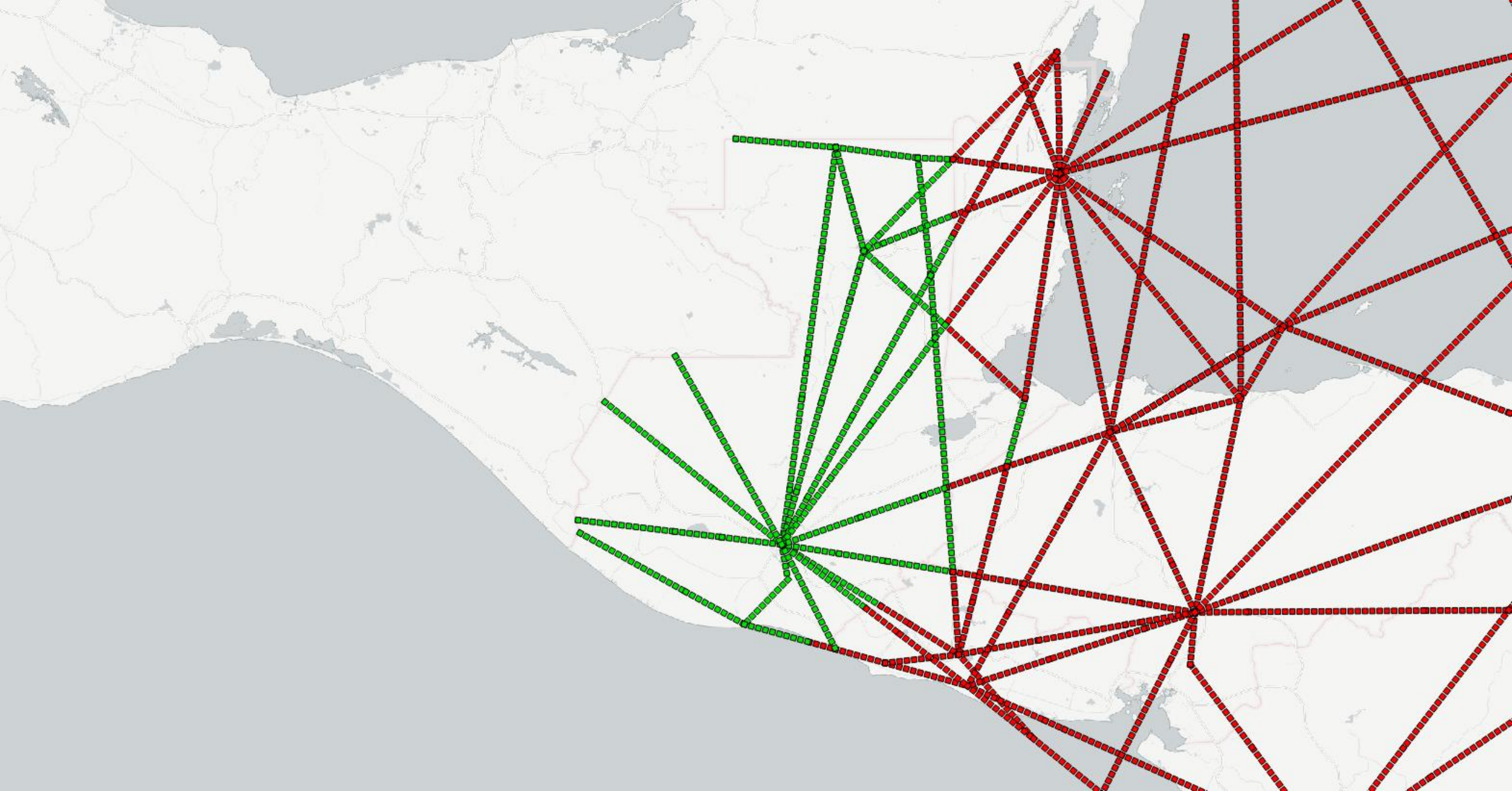
RUTAS BELICE – ESPACIO AÉREO SUPERIOR



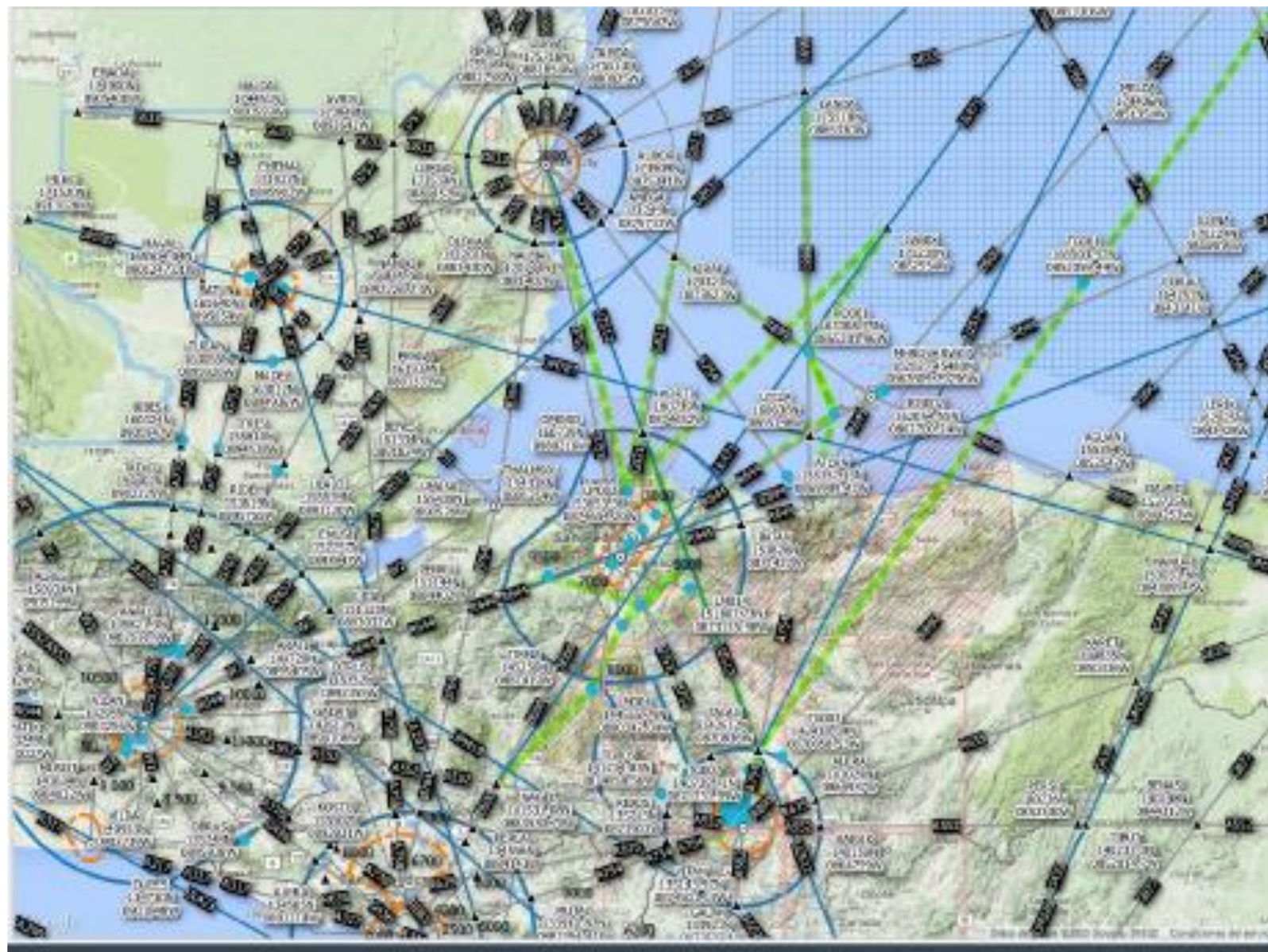
RUTAS COSTA RICA – ESPACIO AÉREO SUPERIOR



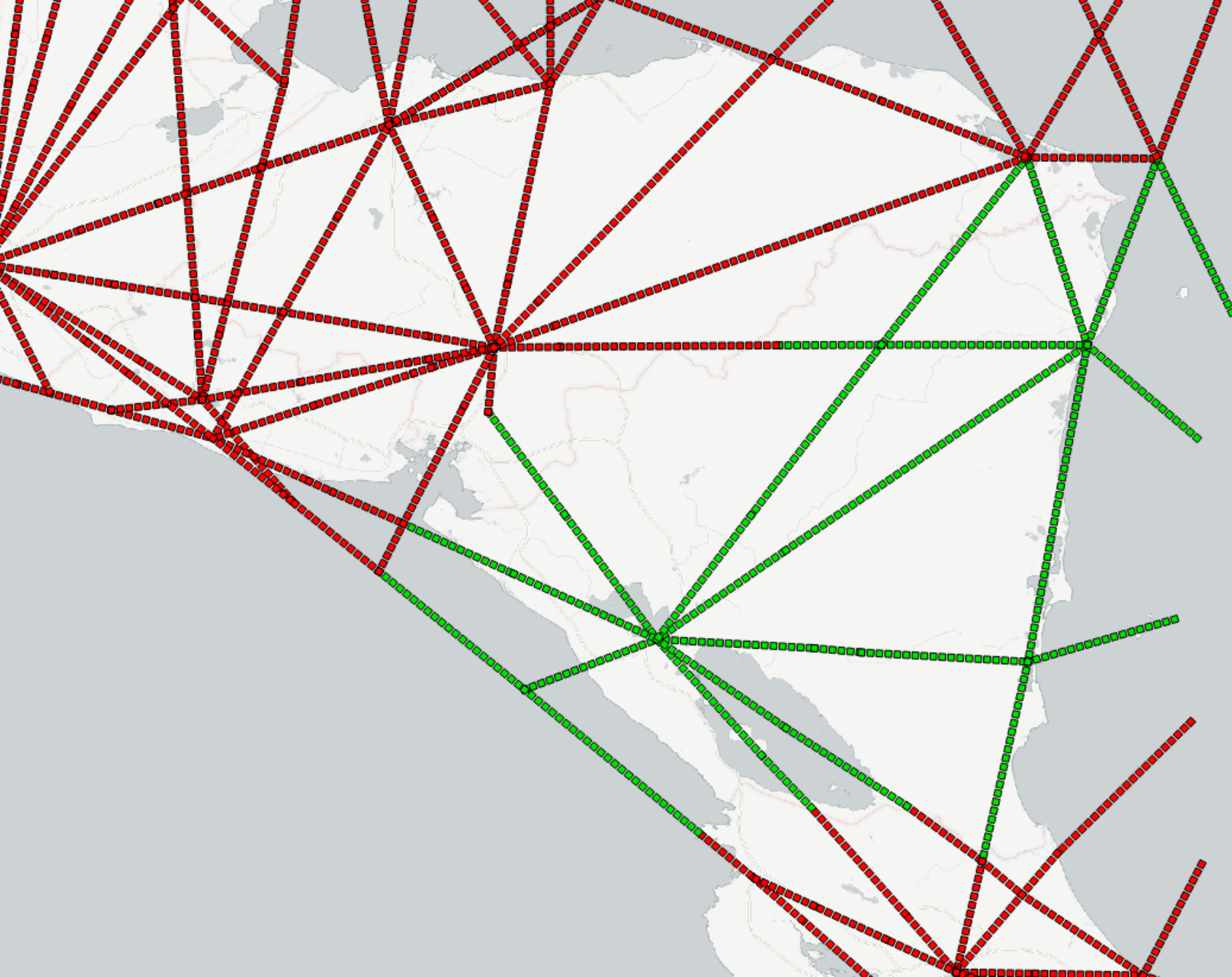
RUTAS EL SALVADOR – ESPACIO AÉREO SUPERIOR



RUTAS GUATEMALA – ESPACIO AÉREO SUPERIOR

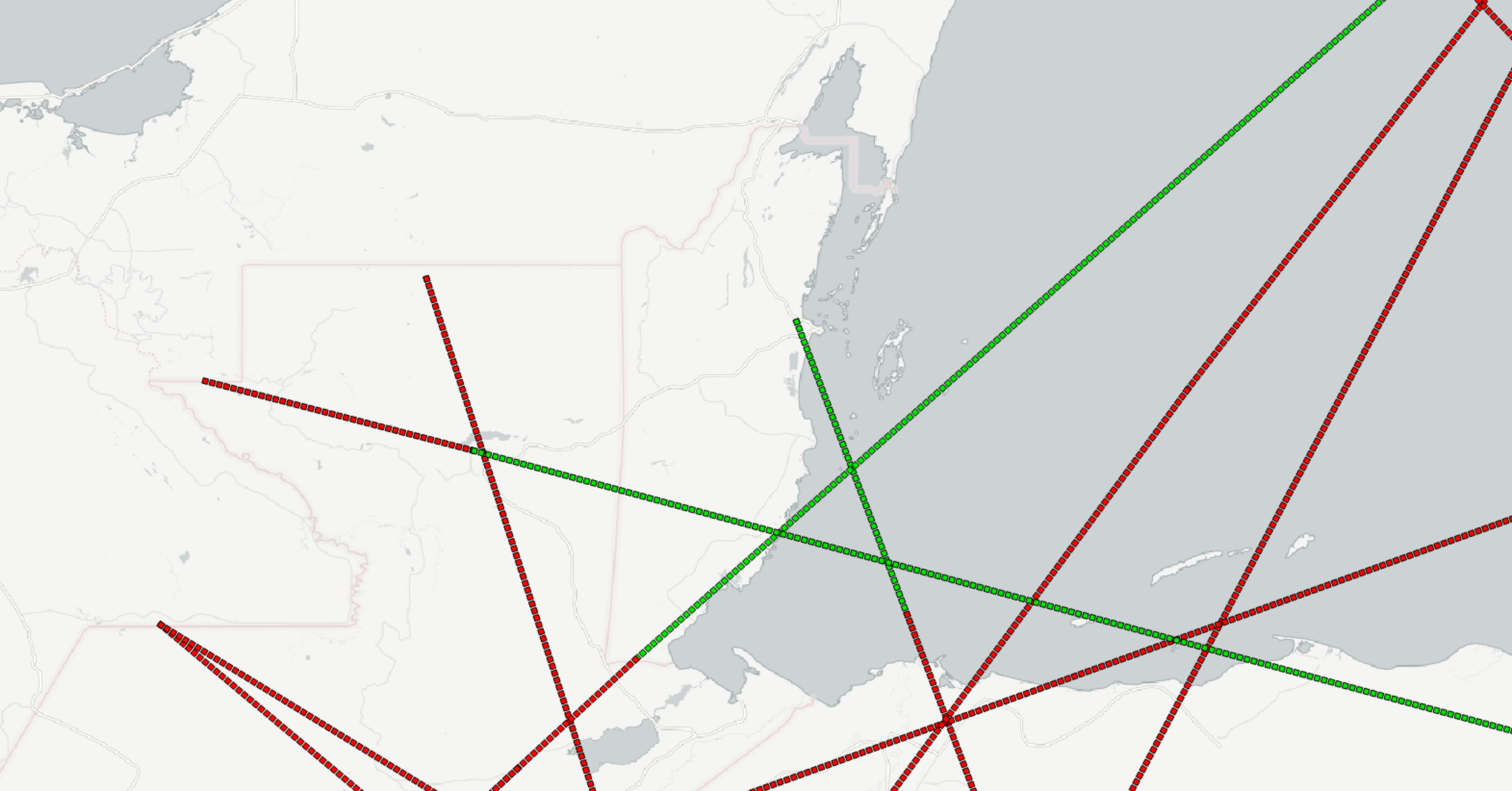


RUTAS HONDURAS – PUBLICA TODA LA INFORMACIÓN ENR DE ESPACIO AÉREO SUPERIOR



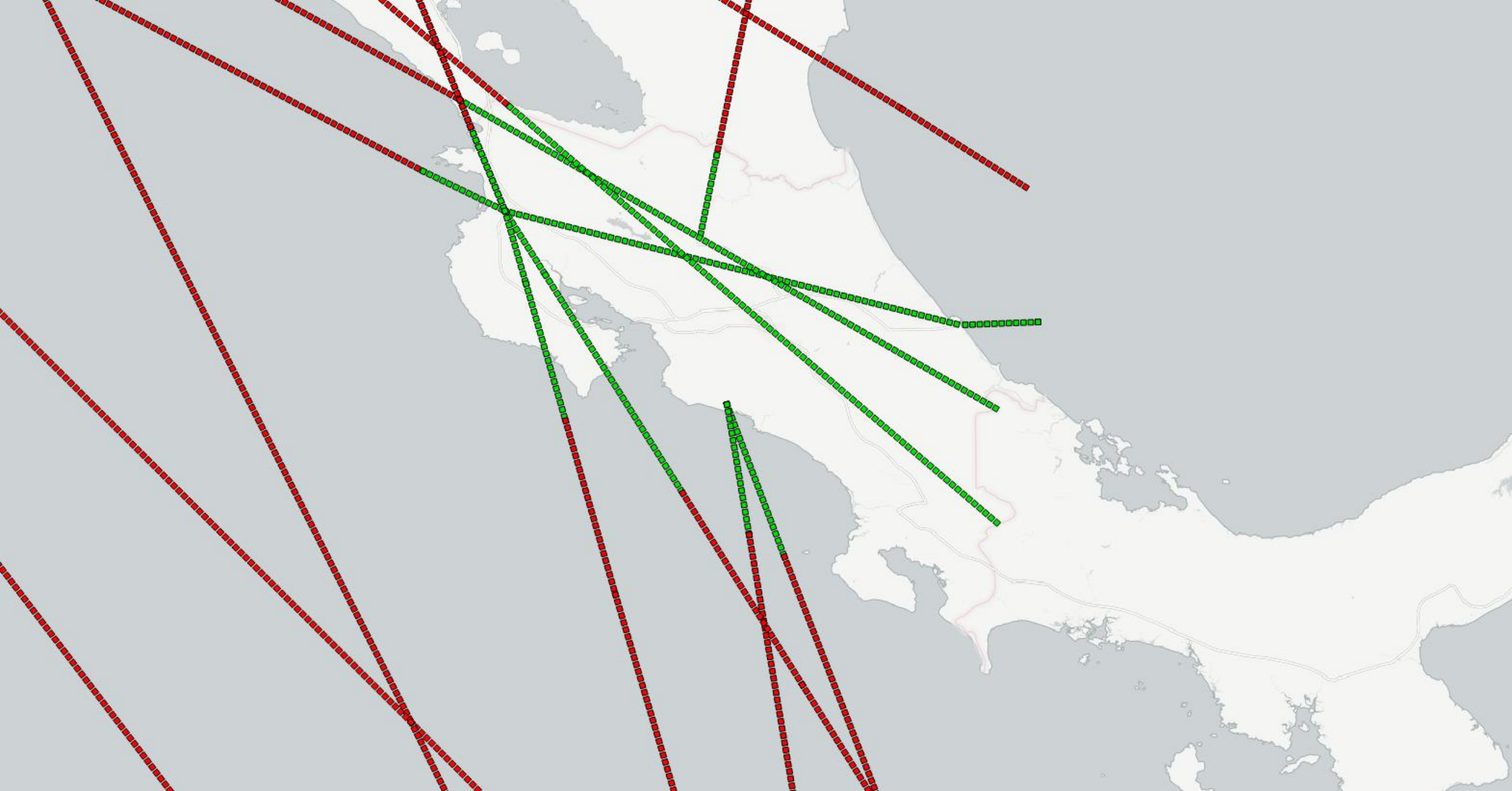
RUTAS NICARAGUA – ESPACIO AÉREO SUPERIOR

RUTAS RNAV

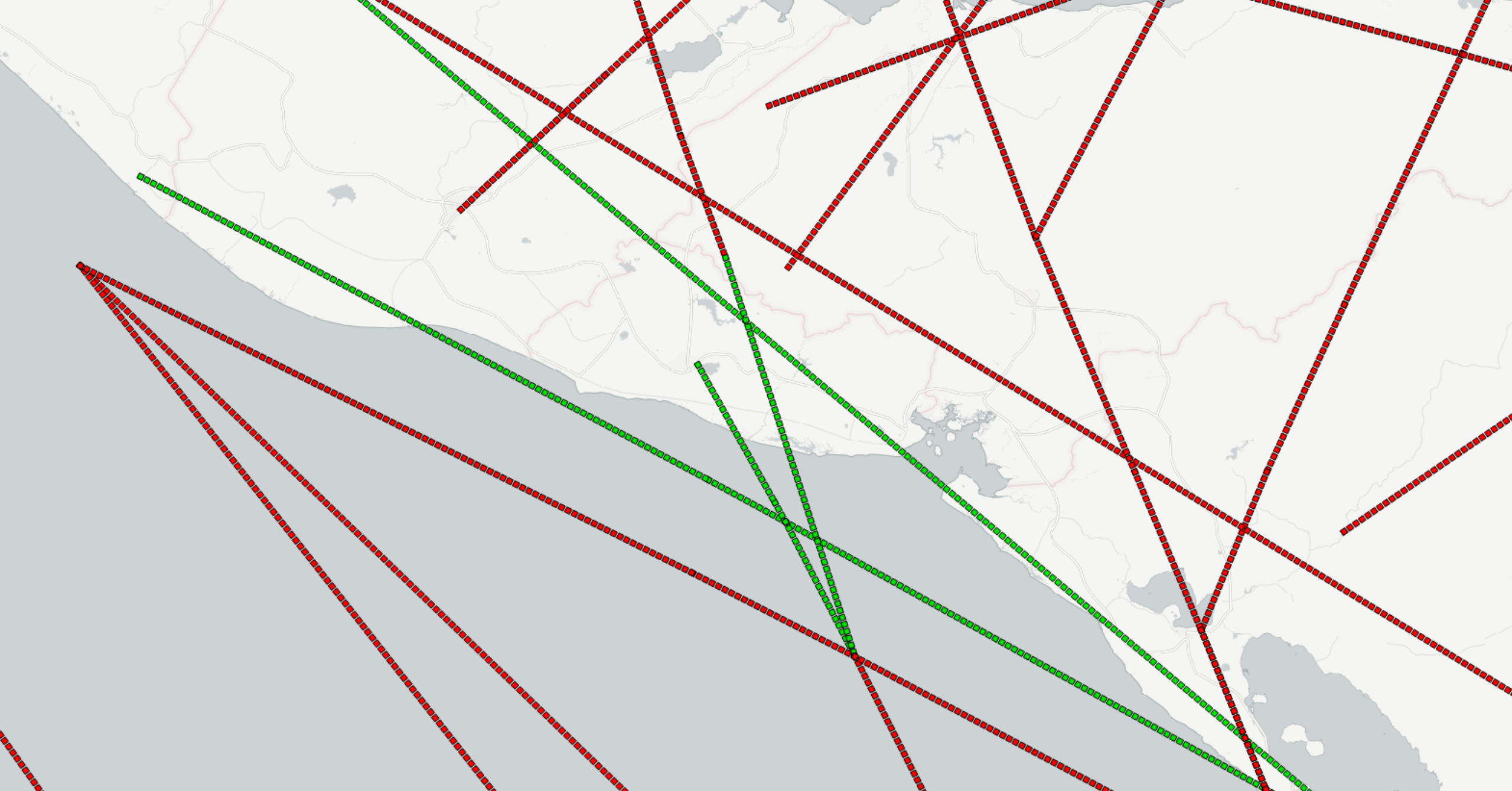


RUTAS RNAV – BELICE

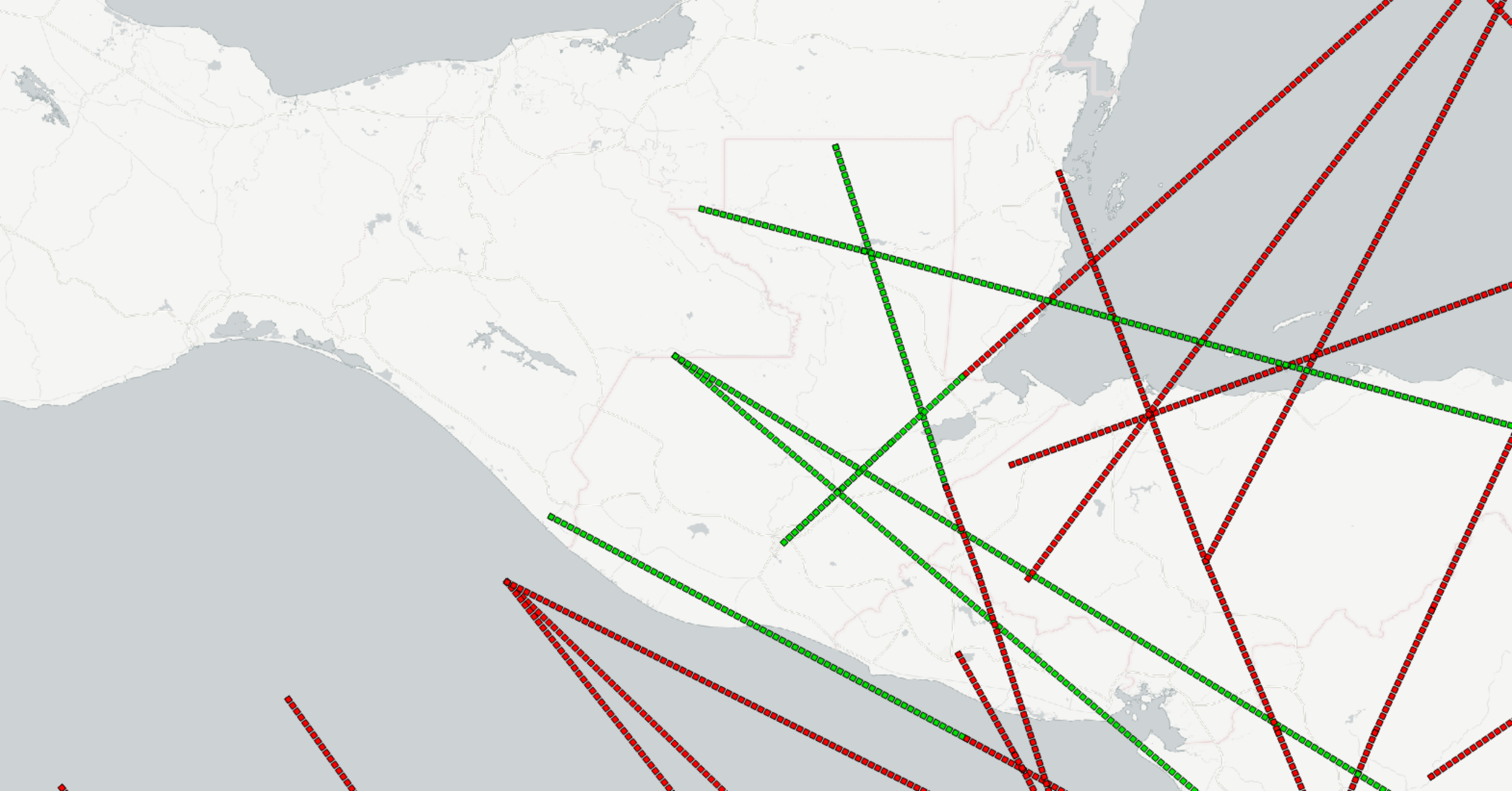




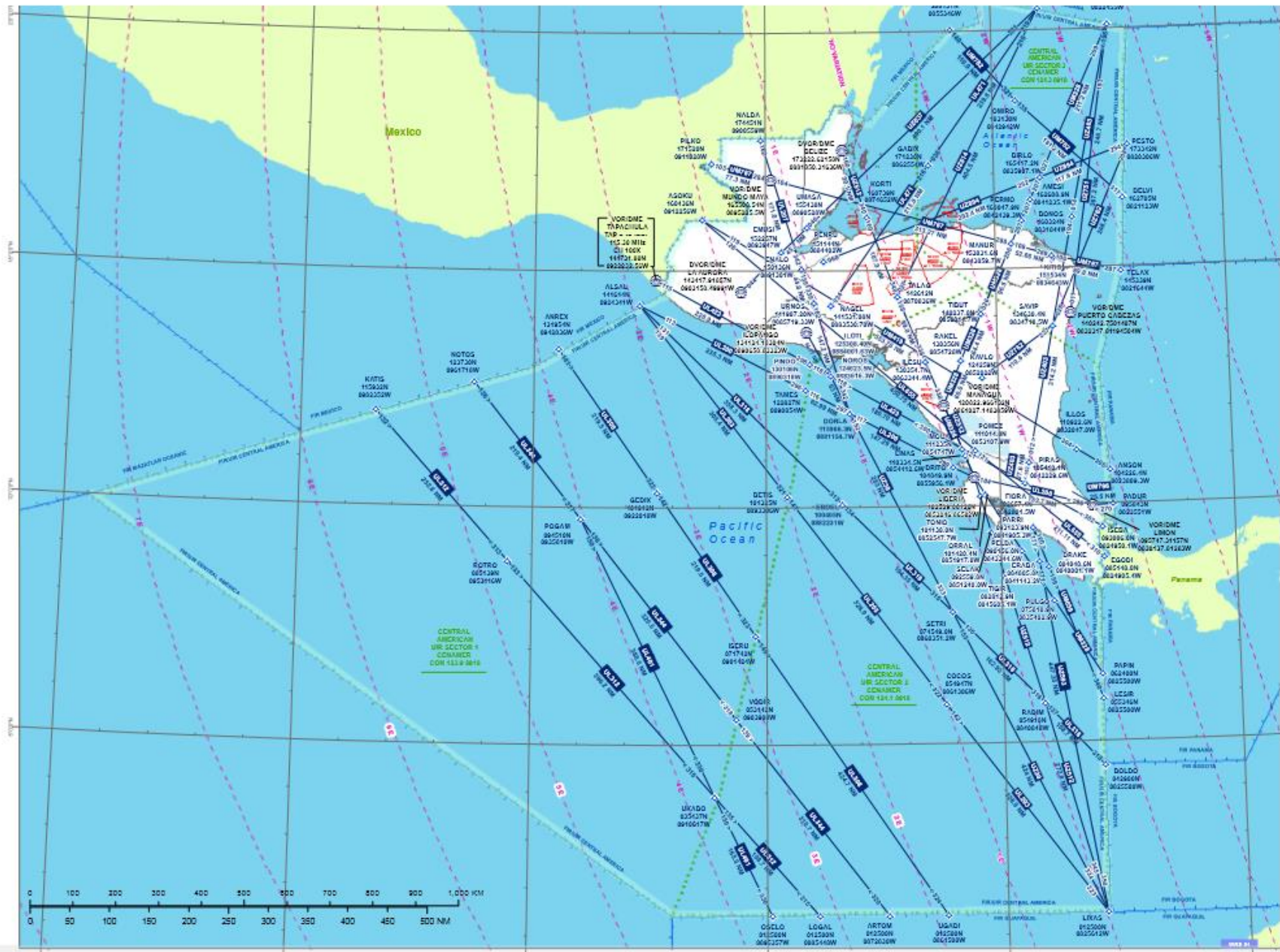
RUTAS RNAV – COSTA RICA



RUTAS RNAV – EL SALVADOR



RUTAS RNAV – GUATEMALA



Changes: UL200 - DORLA inserted between TAVES & DRITO, LL423 - NORIOS inserted between PINDO & IMOLLA, UL318 inserted between EBOEL & RADIM, LMT87 - MANUR inserted between KTTIS & TIK

## ENR 6.1-3 RNAV ROUTES EN ROUTE CHART FIR CENTRAL AMERICA (FIR MHTG)

Date of aeronautical information: 13 NOV 14  
Date of isogonic lines: 2012

Geodetic Reference System: WGS 84

Consult NOTAM for latest aeronautical information

The prohibited, restricted and dangerous areas depicted are those whose vertical limit is above 19500 ft when active

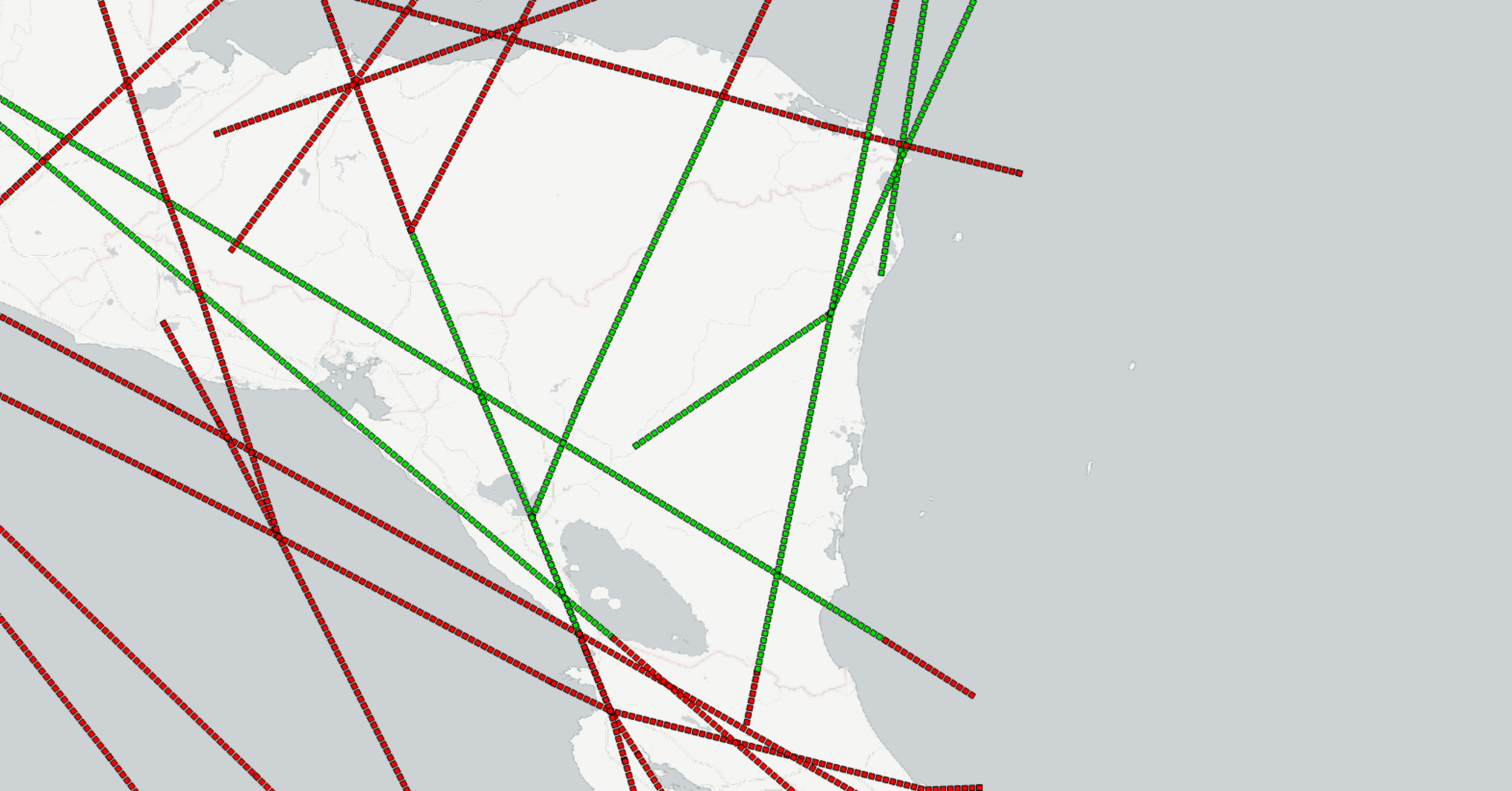
LAMBERT CONFORMAL CONICAL PROJECTION

1:9,500,000

AIM COCESNA (c) 2011-2014  
ais\_pub@cocesna.org

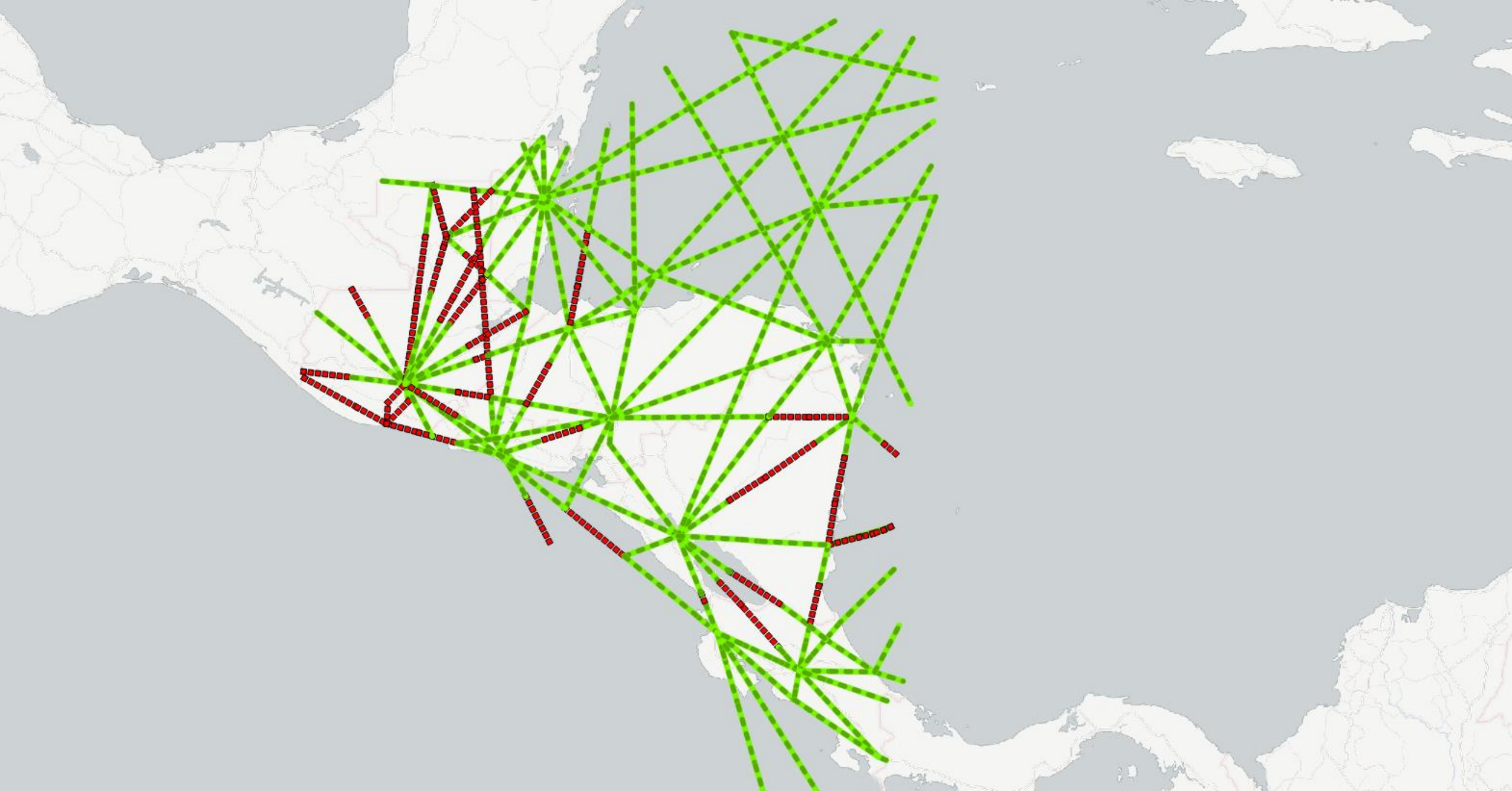
15 NOV 14 / AMDT 6-14

RUTAS RNAV – HONDURAS PUBLICA TODA LA INFORMACIÓN ENR RNAV

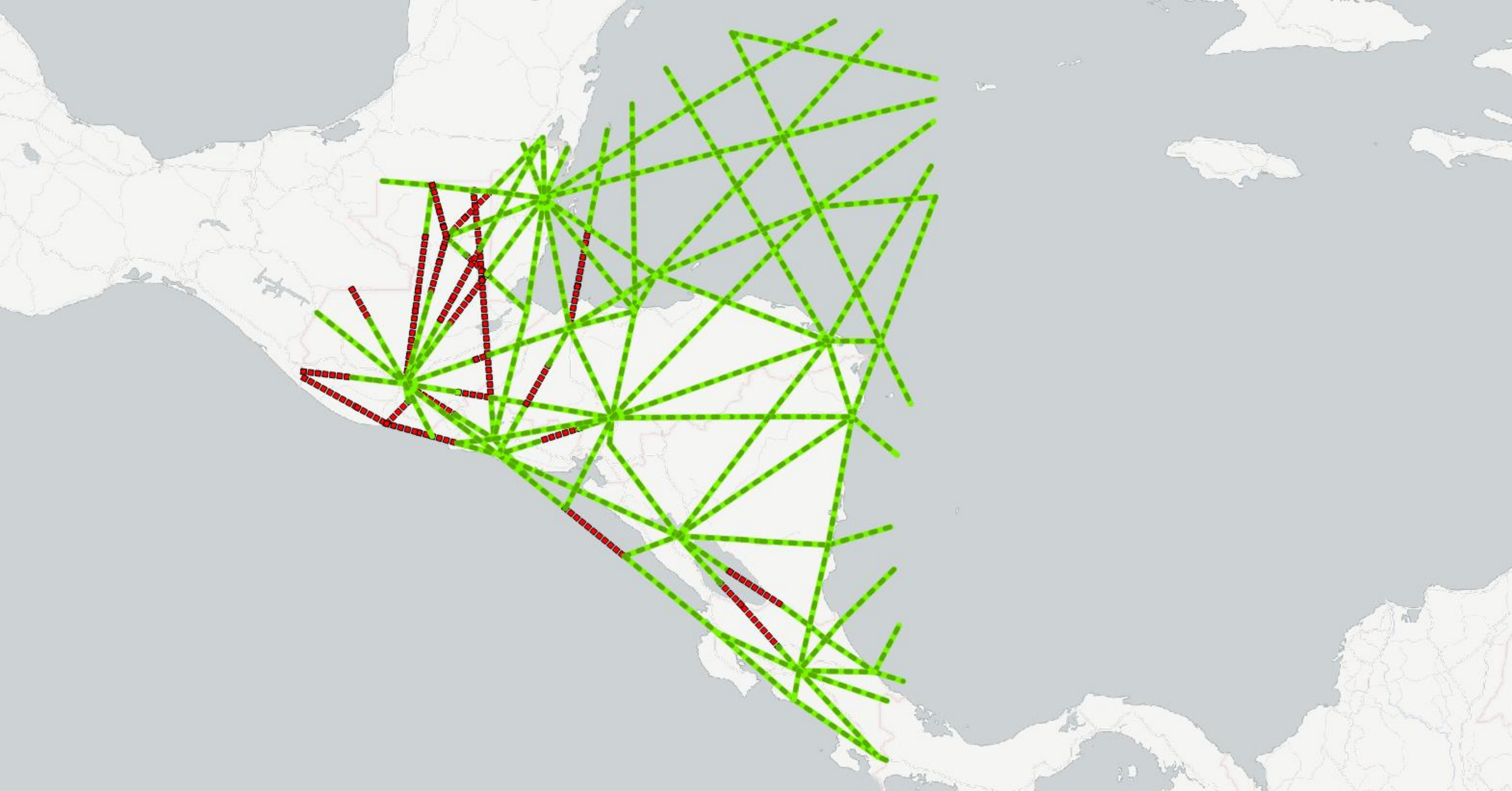


RUTAS RNAV – NICARAGUA

ERROR DISTANCIAS

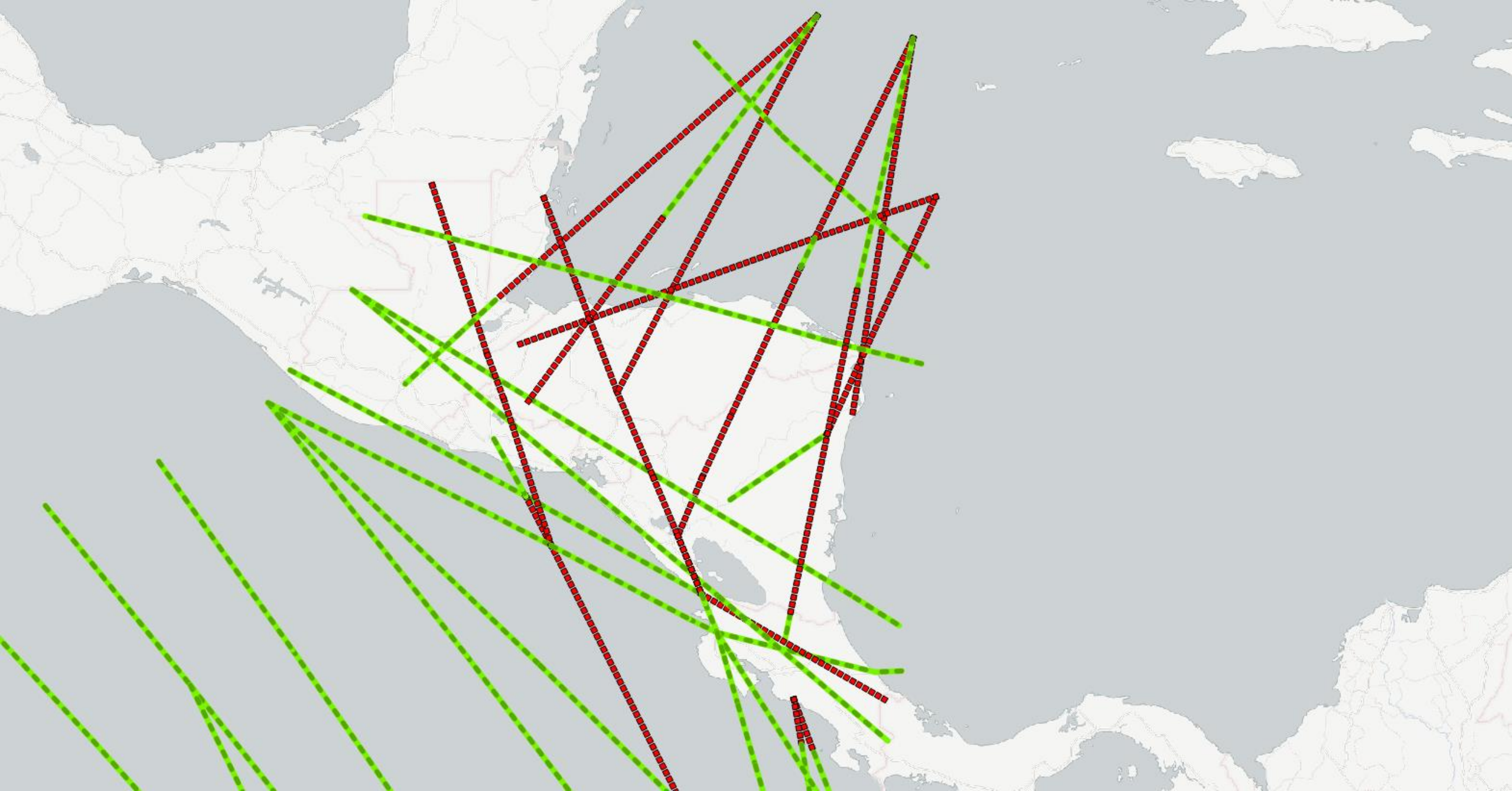


RUTAS ESPACIO AÉREO INFERIOR – ERRORES DISTANCIA



RUTAS ESPACIO AÉREO SUPERIOR – ERRORES DISTANCIA





RUTAS ESPACIO RNAV – ERRORES DISTANCIA