



ICAO

International Civil Aviation Organization
North American, Central American and Caribbean Office

WORKING PAPER

GTE/14 — WP/11
26/11/14

Fourteenth Scrutiny Working Group Meeting (GTE/14)
Mexico City, Mexico, 1 – 5 December 2014

Agenda Item 3: Large Height Deviation (LHD) Analysis

RVSM AIRSPACE SAFETY ASSESSMENT IN THE CAR/SAM FIRS

(Presented by CARSAMMA)

EXECUTIVE SUMMARY

This paper presents a summary of the reports of Large Height Deviation (LHD) received by CARSAMMA, and analysis using the methodology SGSO / SMS advocated by ICAO and reaffirmed during GREPECAS meeting as a recommendation for use by CARSAMMA in Regions CAR / SAM.

Strategic Objectives:

- Safety

References:

- SMS Manual – ICAO.
- Large Height Deviation (LHD) Reports (LHD) 2011.

1. Introduction

1.1. The CAR/SAM Regional Planning and Implementation Group (GREPECAS) delegated to the Caribbean and South America Monitoring Agency (CARSAMMA) the function of implementation the methodology SMS in the analysis of the LHD. The CARSAMMA is an administrative agency subordinate to the *Departamento de Controle do Espaço Aéreo (DECEA)*, an organ from the System Airspace Control of Brazil (SISCEAB).

1.2. SMS is used to estimate the value at risk of the system.

1.3. An important increase in the use of the methodology in the analysis of SMS LHD is the system of risk assessment and identification of trends and the critical points where they occur, reducing the computation time of the security analysis systems.

1.4. The aim of this paper is to provide a summary of the evaluation of the safety on RVSM airspace in the FIR-CAR/SAM. The safety assessment was conducted over a period of twelve months of continuous operation.

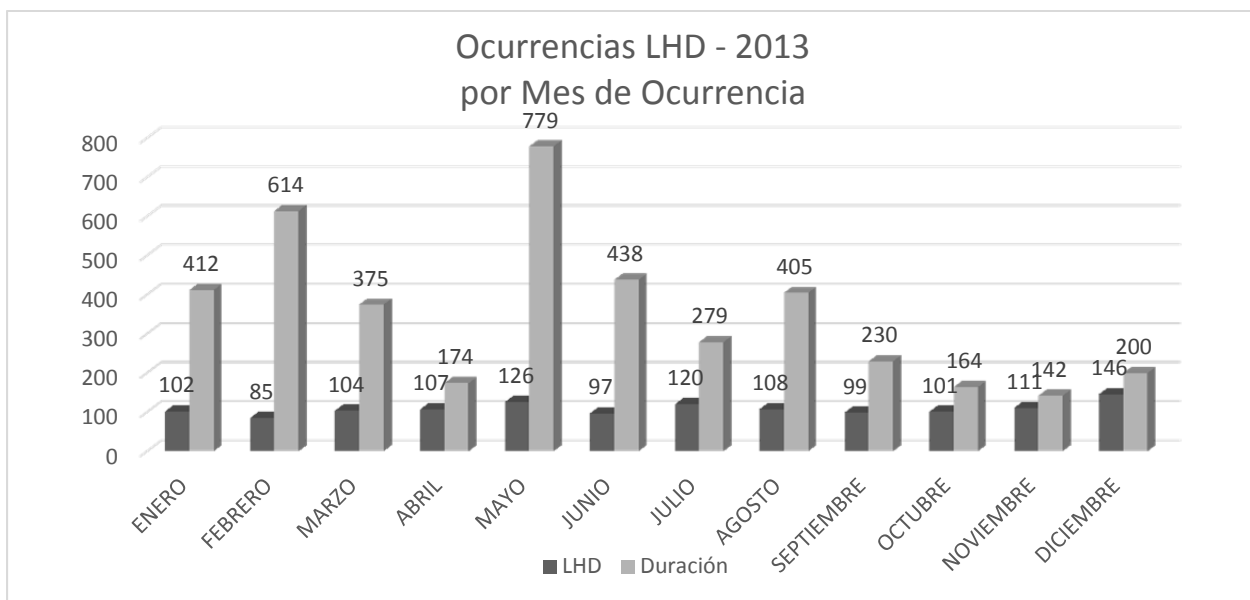
2. Context

2.1. A series of LHD reports were accumulated in a 12-month period were used for this safety assessment, all carried out between January and December 2013.

2.2. Table 1 and Figure 1 show the summary of LHD occurrences validated by the Scrutiny Working Group (GTE) and its duration (in minutes) associated with the monthly LHD.

YEAR 2011					
MONTH	LHD NUMBER	Total DURATION	Medium DURATION	Medium RISK	Greater RISK
JANUARY	102	412	4,04	27,9	51
FEBRUARY	85	614	7,22	27,0	51
MARCH	104	375	3,61	30,5	60
APRIL	107	174	1,63	29,0	51
MAY	126	779	6,18	30,0	61
JUNE	97	438	4,52	30,1	60
JULY	120	279	2,33	29,4	51
AUGUST	108	405	3,75	28,3	60
SEPTEMBER	99	230	2,32	20,8	51
OCTOBER	101	164	1,62	27,2	55
NOVEMBER	111	142	1,28	25,9	51
DECEMBER	146	200	1,37	24,4	45
TOTAL	1306	4212	3,32	27,5	

Table 1: LHD Occurrences, with duration, medium duration, medium risk and greater risk per month



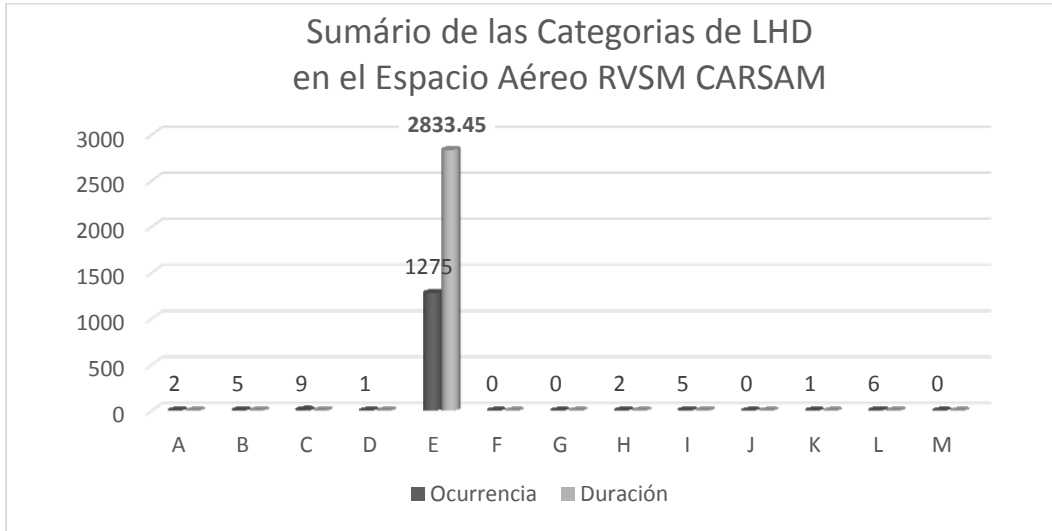
Graph 1: LHD Monthly Occurrences/Duration

2.3. Back in February there was a situation in which a single LHD (138) lasted 360 minutes in the Atlantic FIR, in addition, in May there were several long-duration LHDs in the same FIR.

2.4. Table 2 and Graph 2 summarize the number of LHD occurrences, the duration (in minutes) associated with the LHD and the number of unauthorized flight levels crossed through LHD Code from 1 January to 31 December 2013, inclusive.

LHD CODE	LHD Code Description	N°. of LHD occurrences	LHD duration (Min)	Non-authorized levels crossed
A	Flight crew failing to climb/descend the aircraft as cleared	2	1,00	1
B	Flight crew climbing/descending without ATC clearance	5	4,33	6
C	Incorrect operation or interpretation of airborne equipment (e.g. incorrect operation of fully functional FMS, incorrect transcription of ATC clearance or re-clearance, flight plan followed rather than ATC clearance, original clearance followed instead of re-clearance, etc.)	9	4,50	5
D	ATC system loop error (e.g. ATC issues incorrect clearance or flight crew misunderstands clearance message)	1	3,00	1
E	Coordination errors in the ATC-to-ATC transfer or control responsibility as a result of Human Factors (e.g. late or non-existent coordination; incorrect time estimate/actual; flight level, ATS route, etc. not in accordance with agreed parameters)	1275	2833,45	1643
F	Coordination errors in the ATC-to-ATC transfer or control responsibility as a result of equipment outage or technical issues	0	0,00	0
G	Deviation due to aircraft contingency event leading to sudden inability to maintain assigned flight level (e.g. pressurization failure, engine failure)	0	0,00	0
H	Deviation due to airborne equipment failure leading to unintentional or undetected change of flight level	2	1,17	1
I	Deviation due to turbulence or other weather-related cause	5	4,85	4
J	Deviation due to TCAS RA; flight crew correctly following the RA	0	0,00	0
K	Deviation due to TCAS RA; flight crew incorrectly following the RA	1	0,42	1
L	An aircraft that is not RVSM approved being provided with RVSM separation (e.g. flight plan indicating RVSM approval but aircraft not approved; ATC misinterpretation of flight plan)	6	3,25	9
M	Other — this includes flights operating (including climbing/descending) in airspace where flight crews are unable to establish normal air-ground communications with the responsible ATS unit	0	0,00	0
Total	(Ene 13 – Dic 13)	1306	2855,97	1671

Table 2: Summary of LHD occurrences and LHD Code duration

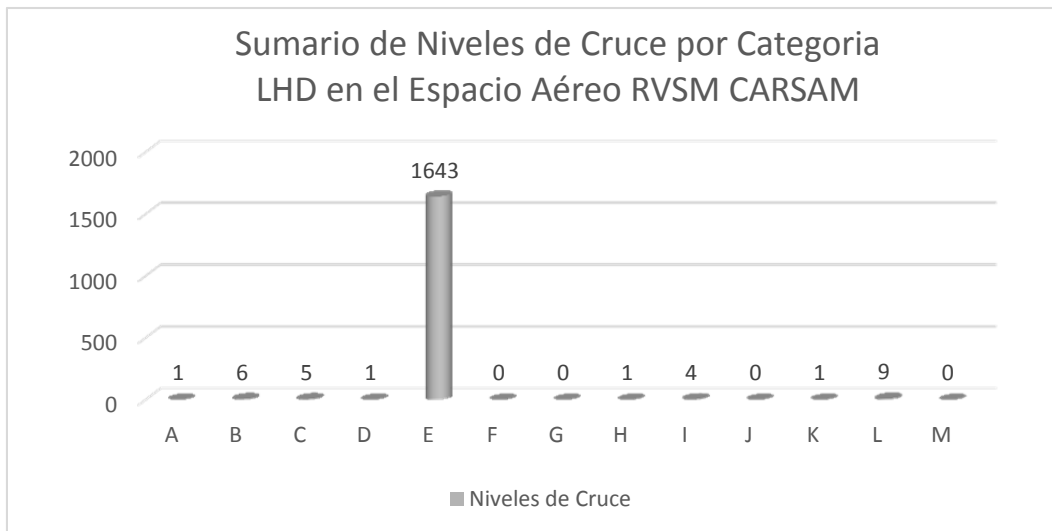


Graph 2: Summary of LHD Occurrences sorted by Code

2.5. Code E LHDs (Error in coordination between ATC) were the most frequent in 2013 with 1275 events, this was followed by Code C (9), L (6), B and I (5). This elevated number of LHD Code (E) proves the need to improve coordination among adjacent air traffic control, which could be accomplished through awareness and coordination training among controllers.

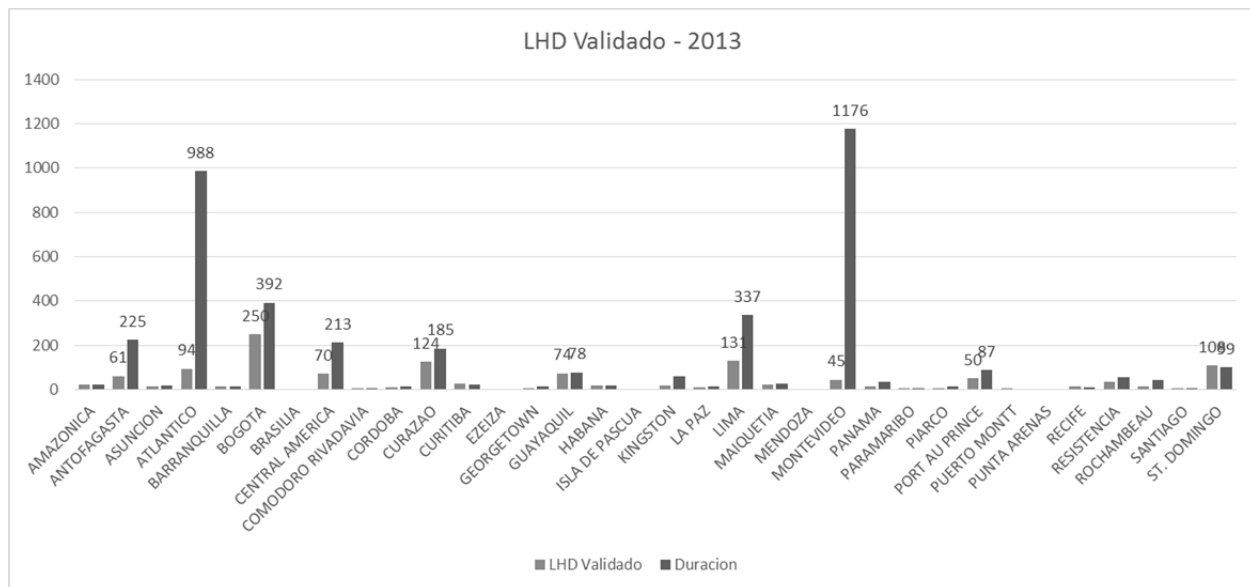
2.6. In addition, Graph 2 shows that regarding duration, Code E LHDs were the most outstanding in the analysis with a total duration of 2833 minutes. This is one of the worst air traffic incidents, since aircraft were not expecting this position neither in the level nor at the time of occurrence.

2.7. Graph 3 shows LHDs that have been produced with flight level changes without air traffic control clearance. In this respect, Code E Levels are the most outstanding with 1643 crossing levels.



Graph 3: LHD Occurrences Summary sorted by Crossing Level

2.8. Graph 4 shows all validated LHDs sorted by FIR. It should be noted that the Montevideo FIR has the largest absolute duration number in minutes, leaving the aircraft that uses it more exposed to an operational risk.



Graph 4: LHD Occurrences Summary sorted by FIR

3. Risk Value Assessment (VR)

3.1. This section updates the RVSM airspace safety assessment results in the CAR/SAM FIRs. Therefore, the methodology to produce the risk value assessment (SGSO/SMS) was applied to the internationally accepted safety evaluation in this airspace.

3.2. Estimates of VR parameters - The amount and starting material to estimate values of each parameter related with risk value (VR) that was internationally accepted to be used during the RVSM airspace safety assessment is summarized in the following formula and is described in Table 3.

$$VR = (P \times D \times S) + R + W + T, \text{ where:}$$

Parameter	Description	Value
VR	Risk Value	To be calculated
P	Position probability	Varies from 1 to 5
D	Event duration	Varies from 1 to 3
S	Event severity	Varies from 1 to 5
R	With or without ADS/RADAR	With=0 or Without=5
W	Weather conditions	VMC=0 or IMC=5 if there is another aircraft
T	Other traffic (if any)	Range goes from 1 to 15 (of separation)
	TOTAL	Maximum 100

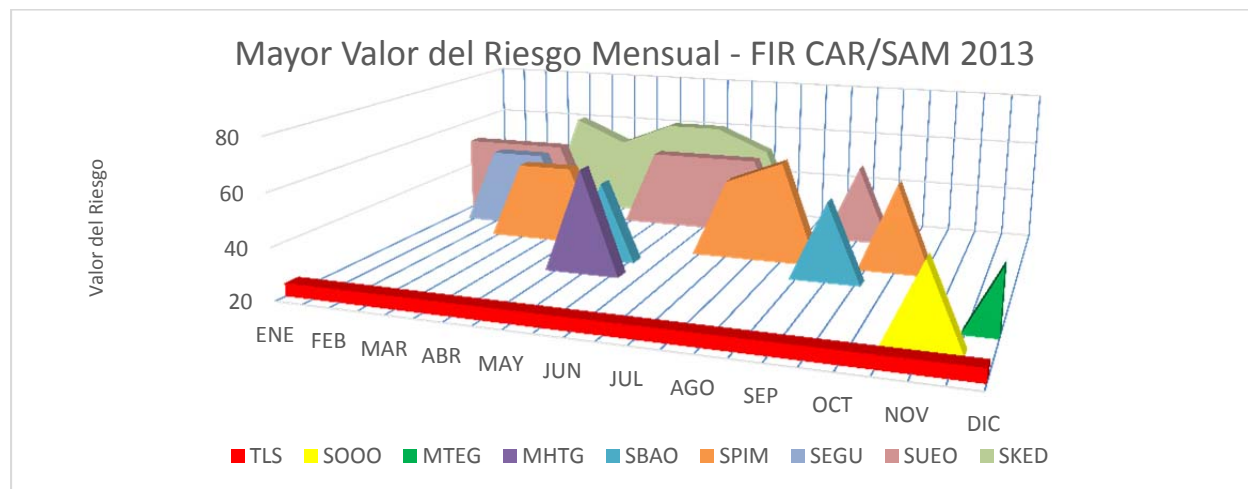
Table 3: Risk Value Parameters Calculation

3.3. Safety Assessment - CAR/SAM FIRs airspace safety assessment results are detailed in Table 4 and Graph 5 (FIR with LHDs of a VR higher than 20).

	TLS	SOOO	MTEG	MHTG	SBAO	SPIM	SEGU	SUEO	SKED
JAN	20							51	
FEB	20						51	51	
MAR	20					51	51	51	60
APR	20					51			51
MAY	20			61	51			51	60
JUN	20							51	60
JUL	20					51		51	51
AGO	20					60			
SEP	20				51			51	
OCT	20					55			
NOV	20	51							
DIC	20		45						

Table 4: Greater risk value estimates for LHD

3.4. Graph 5 presents the most important risk value estimates that occurred every month on the basis of LHD reports as of 1 January to 31 December 2013.



Graph 5: Greater risk value for RVSM airspace CAR/SAM FIRs. The red line represents the TLS VR (25).

3.5. In Central America FIR (MHTG) a risk value of 61 points was seen, the maximum level in 2013. In Montevideo FIR (SUEO) during 2013, the operational risk value was above the tolerable level of safety (TLS – red line in Graph 5), that is, above 20 points seven times. It should be noted that Bogota and Lima FIRs have a VR greater than the TLS. The TLS limit was created in the Eleventh Scrutiny Task Force (GTE/11-ICAO), held in 2011 (Lima, Peru).

4. LHD Safety Analysis (SGSO)

4.1. LHD or operational errors are shown in Appendix A, which have been assessed by GTE as those that had the greater risk value (> 20), which occurred within the 12 months of 2013. FIRs that suffered and generated risks in 2013 are shown in Table 5.

4.2. LHD 464 presented in May 2013, contributed with a 1.615% risk assessment for this month and has a VR = 61, which is the largest of the sampling.

4.3. The Bogota FIR appears 181 times presenting LHD reports in the adjacent FIRs, since it contributed to a risk increase in the RVSM airspace.

4.4. At the same time, the Guayaquil FIR appears 242 times in the risk generation.

FIR	Suffers the risk	Generates the risk
AMAZONICA	2	21
ANTOFAGASTA	34	8
ASUNCION	12	3
ATLANTICO	80	13
BARRANQUILLA	7	21
BOGOTA	181	55
BRASILIA	0	3
CAYENNE	12	0
CENTRAL AMERICA	26	20
COMODORO RIVADAVIA	3	0
CORDOBA	11	11
CURAZAO	122	20
CURITIBA	14	3
EZEIZA	0	67
GEORGETOWN	4	2
GUAYAQUIL	67	242
HABANA	7	2
ISLA DE PASCUA	0	1
KINGSTON	9	11
LA PAZ	11	30
LIMA	125	75
MAIQUETIA	11	10
MONTEVIDEO	45	58
PANAMA	5	26
PARAMARIBO	3	6
PIARCO	5	11
PORT AU PRINCE	50	26
RESISTENCIA	34	2
ST. DOMINGO	38	138

Table 5: LHDs assessed with the greater risk value in 2011.

4.5. Part of the analysis process includes a detailed revision of certain operation errors, in order to identify contributing factors and to guarantee that procedures and processes be implemented by Safety Authorities in the CAR/SAM FIRs in order to reduce the recurrence probability of these errors.

In the case of RVSM airspace, the CARSAMMA assessed individual operational errors identified by LHD reports presented by the 34 FIRs in the coverage geographical area, first grouped by FIR and then by State, using the following statistical tools:

Risk Value Measures

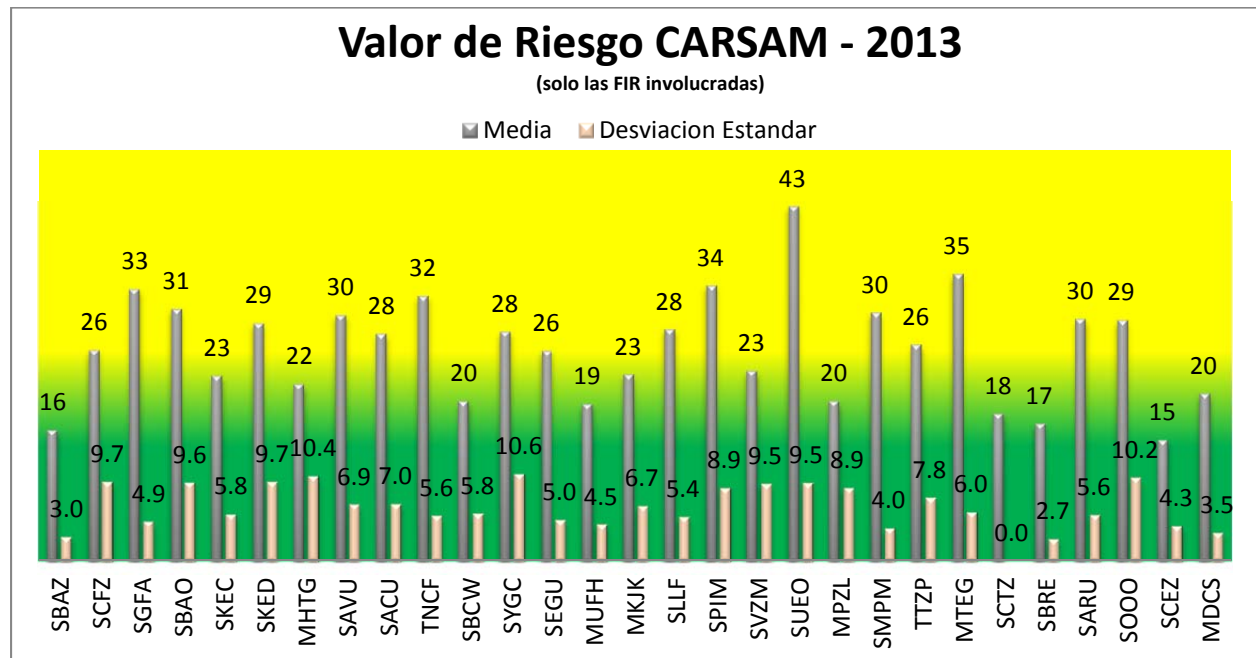
$$\Rightarrow M = \sum VR / n ;$$

Standard deviations

$$\Rightarrow \sigma = \sqrt{\frac{1}{N} \sum_{i=1}^N (x - \bar{x})^2} ; y$$

Trust coefficient for the analysis of 95% (= **1.96**).

4.6. Graph 6 identifies the analysis results with the risk value contribution assigned to operational errors of large height deviations by FIR within the analysis of 2013 data.



Graph 6: State Risk Value Contribution

4.7. Graph 7 offers a visual image of the geographical location of risk areas (hotspots) of LHD reports with 50 points or more in the 12-month data set issued by the CAR/SAM FIRs in 2013. The image is destined to provide an identification source of specific risk areas related with RVSM operations.

4.8. The black dot at the top left is the LHD with highest VR=61 (generated by the Easter Island) in the Central American FIR. Guayaquil \ Lima and Guayaquil \ Bogota FIRs keep showing a high number of LHD, most errors are related to Code E (coordination). In addition, there are several LHDs identified in the current data set which is very representative of the Atlantic \ Montevideo \ Ezeiza FIR vicinity.



*Graph 7: CAR/SAM FIR – RVSM risk areas for large height deviations (LHD)
January – December 2011*

5. Suggested action

5.1. The Meeting is invited to:

- a) Recognize the present Working Paper terms, and States can use the information provided in this working paper, which may be used by States as a reference for mitigating their LHDs; and
- b) submit such decision to GTE members for their information, approval and submission to GREPECAS.

APPENDIX A

LHD Sequence	FIR suffering the risk	FIR generating the risk	Date of the event	GTE Code	Risk Value
1	MONTEVIDEO	EZEIZA	01/01/13	E2	51
2	MONTEVIDEO	EZEIZA	01/01/13	E2	51
3	ATLANTICO	MONTEVIDEO	01/01/13	E2	39
4	CURAZAO	ST. DOMINGO	01/01/13	E2	40
5	CURAZAO	ST. DOMINGO	01/01/13	E2	34
6	ATLANTICO	MONTEVIDEO	01/01/13	E2	22
8	GUAYAQUIL	BOGOTA	01/01/13	E1	23
9	CURAZAO	ST. DOMINGO	02/01/13	E2	40
10	CURAZAO	KINGSTON	02/01/13	E1	26
12	CENTRAL AMERICA	GUAYAQUIL	04/01/13	E1	26
13	RESISTENCIA	CURITIBA	04/01/13	E2	34
14	CURAZAO	ST. DOMINGO	04/01/13	E1	30
15	PORT AU PRINCE	CURAZAO	05/01/13	E1	23
17	RESISTENCIA	ASUNCION	06/01/13	E2	39
20	GUAYAQUIL	LIMA	07/01/13	E2	30
23	BOGOTA	GUAYAQUIL	09/01/13	E1	35
24	BOGOTA	GUAYAQUIL	10/01/13	E1	23
26	ST. DOMINGO	CURAZAO	11/01/13	E2	22
27	GUAYAQUIL	LIMA	11/01/13	E1	23
28	CURAZAO	ST. DOMINGO	11/01/13	E2	34
30	LIMA	AMAZONICA	01/01/13	E1	39
31	ST. DOMINGO	PORT AU PRINCE	12/01/13	E2	22
33	ST. DOMINGO	CURAZAO	13/01/13	E2	25
35	MAIQUETIA	BOGOTA	13/01/13	E2	46
36	PORT AU PRINCE	ST. DOMINGO	13/01/13	E1	35
37	CURITIBA	MONTEVIDEO	13/01/13	E2	34
38	ST. DOMINGO	PORT AU PRINCE	14/01/13	E2	22
39	ST. DOMINGO	PORT AU PRINCE	14/01/13	E2	22
41	CURAZAO	BARRANQUILLA	14/01/13	E1	26
42	CURAZAO	BARRANQUILLA	14/01/13	E1	26
43	CURAZAO	BARRANQUILLA	14/01/13	E1	31
44	CURITIBA	PILOTO	15/01/13	D	26
45	MONTEVIDEO	EZEIZA	15/01/13	E2	51
46	ATLANTICO	MONTEVIDEO	15/01/13	E2	27
47	PORT AU PRINCE	ST. DOMINGO	15/01/13	E1	35
48	LIMA	GUAYAQUIL	15/01/13	E1	23

LHD Sequence	FIR suffering the risk	FIR generating the risk	Date of the event	GTE Code	Risk Value
51	BOGOTA	GUAYAQUIL	16/01/13	E1	23
52	BARRANQUILLA	MAIQUETIA	16/01/13	E2	34
53	CURAZAO	ST. DOMINGO	16/01/13	E1	30
54	GUAYAQUIL	LIMA	16/01/13	E1	25
58	MAIQUETIA	BARRANQUILLA	16/01/13	E2	22
59	PARAMARIBO	PIARCO	17/01/13	E2	34
60	LIMA	GUAYAQUIL	18/01/13	E1	39
62	ANTOFAGASTA	LIMA	18/01/13	E1	35
63	BOGOTA	GUAYAQUIL	18/01/13	E2	27
67	KINGSTON	HABANA	20/01/13	E1	39
68	BARRANQUILLA	KINGSTON	20/01/13	E1	33
69	BOGOTA	GUAYAQUIL	20/01/13	E1	31
70	GUAYAQUIL	LIMA	20/01/13	E1	23
71	CURAZAO	PORT AU PRINCE	20/01/13	E1	26
72	CORDOBA	RESISTENCIA	21/01/13	E1	23
73	ANTOFAGASTA	LIMA	21/01/13	E1	26
75	CURAZAO	ST. DOMINGO	21/01/13	E1	35
76	CURAZAO	ST. DOMINGO	21/01/13	E1	31
78	CURAZAO	ST. DOMINGO	21/01/13	E1	31
79	BOGOTA	GUAYAQUIL	22/01/13	E2	39
80	MONTEVIDEO	EZEIZA	22/01/13	E2	51
81	ATLANTICO	MONTEVIDEO	22/01/13	E2	39
82	MONTEVIDEO	EZEIZA	23/01/13	E2	46
83	ATLANTICO	MONTEVIDEO	23/01/13	E2	22
85	CORDOBA	RESISTENCIA	24/01/13	E2	22
90	BOGOTA	PANAMA	26/01/13	E1	31
92	CURAZAO	ST. DOMINGO	26/01/13	E1	31
93	BOGOTA	GUAYAQUIL	26/01/13	E1	39
94	BOGOTA	GUAYAQUIL	27/01/13	E1	26
97	ST. DOMINGO	PORT AU PRINCE	28/01/13	E2	22
98	ST. DOMINGO	PORT AU PRINCE	28/01/13	E2	25
99	ST. DOMINGO	PORT AU PRINCE	28/01/13	E2	25
105	BOGOTA	GUAYAQUIL	29/01/13	E1	31
108	BOGOTA	PANAMA	30/01/13	E2	34
109	LA PAZ	LIMA	30/01/13	E2	39
111	CORDOBA	LA PAZ	31/01/13	E2	22

LHD Sequence	FIR suffering the risk	FIR generating the risk	Date of the event	GTE Code	Risk Value
113	BOGOTA	LIMA	31/01/13	E1	26
114	LIMA	AMAZONICA	31/01/13	E2	27
118	BOGOTA	GUAYAQUIL	02/02/13	E1	35
120	CURAZAO	ST. DOMINGO	02/02/13	E1	30
122	LIMA	GUAYAQUIL	03/02/13	E2	46
123	BOGOTA	GUAYAQUIL	03/02/13	E1	35
124	BOGOTA	GUAYAQUIL	04/02/13	E1	35
129	ANTOFAGASTA	LIMA	06/02/13	E2	46
131	BOGOTA	GUAYAQUIL	07/02/13	E2	22
132	CURAZAO	ST. DOMINGO	07/02/13	E2	40
135	KINGSTON	PILOTO	08/02/13	B	22
136	KINGSTON	CURAZAO	08/02/13	E2	22
137	MONTEVIDEO	EZEIZA	08/02/13	E2	46
138	ATLANTICO	MONTEVIDEO	08/02/13	E2	51
140	BOGOTA	GUAYAQUIL	08/02/13	E1	30
141	LIMA	GUAYAQUIL	09/02/13	E1	39
147	CURAZAO	BARRANQUILLA	11/02/13	E1	26
150	CURAZAO	PORT AU PRINCE	12/02/13	E2	34
151	LIMA	GUAYAQUIL	13/02/13	E2	34
152	LIMA	GUAYAQUIL	13/02/13	E1	49
153	ST. DOMINGO	CURAZAO	13/02/13	E2	25
154	GUAYAQUIL	LIMA	13/02/13	E2	30
155	LIMA	GUAYAQUIL	13/02/13	E1	23
156	BOGOTA	GUAYAQUIL	14/02/13	E1	40
161	ST. DOMINGO	PORT AU PRINCE	15/02/13	E2	22
162	BOGOTA	GUAYAQUIL	16/02/13	E1	31
163	BOGOTA	GUAYAQUIL	16/02/13	E1	35
166	BOGOTA	GUAYAQUIL	17/02/13	E1	35
167	LIMA	GUAYAQUIL	17/02/13	E2	27
171	LIMA	GUAYAQUIL	18/02/13	E1	31
172	LIMA	GUAYAQUIL	19/02/13	E2	51
173	BOGOTA	GUAYAQUIL	19/02/13	E1	35
174	CURAZAO	BARRANQUILLA	21/02/13	E1	26
175	CURAZAO	BARRANQUILLA	21/02/13	E1	26
176	GUAYAQUIL	CENTRAL AMERICA	21/02/13	E1	26
177	BOGOTA	GUAYAQUIL	21/02/13	E1	35

LHD Sequence	FIR suffering the risk	FIR generating the risk	Date of the event	GTE Code	Risk Value
179	CURAZAO	ST. DOMINGO	22/02/13	E1	30
180	CURAZAO	ST. DOMINGO	22/02/13	E1	30
181	LIMA	AMAZONICA	22/02/13	E1	39
182	LA PAZ	LIMA	22/02/13	E1	31
183	GUAYAQUIL	BOGOTA	23/02/13	E2	27
184	BOGOTA	BARRANQUILLA	23/02/13	E2	22
185	CURAZAO	ST. DOMINGO	23/02/13	E1	30
186	PANAMA	KINGSTON	24/02/13	E2	22
187	BOGOTA	PANAMA	24/02/13	E1	31
188	BOGOTA	PANAMA	24/02/13	E1	31
190	BOGOTA	GUAYAQUIL	24/02/13	E1	30
191	PORT AU PRINCE	ST. DOMINGO	24/02/13	E1	35
192	ANTOFAGASTA	LIMA	25/02/13	E2	39
194	ANTOFAGASTA	LIMA	25/02/13	E2	34
195	BOGOTA	GUAYAQUIL	26/02/13	E1	26
196	CURAZAO	BARRANQUILLA	27/02/13	E1	41
197	CORDOBA	LA PAZ	28/02/13	E1	23
198	LIMA	GUAYAQUIL	28/02/13	E1	23
202	LIMA	GUAYAQUIL	02/03/13	E2	51
203	MAIQUETIA	BARRANQUILLA	02/03/13	E2	22
205	ST. DOMINGO	CURAZAO	03/03/13	E2	25
206	BOGOTA	GUAYAQUIL	04/03/13	E1	35
207	BOGOTA	GUAYAQUIL	04/03/13	E1	35
213	RESISTENCIA	EZEIZA	06/03/13	E1	26
214	RESISTENCIA	EZEIZA	06/03/13	E1	26
215	BOGOTA	LIMA	07/03/13	E1	31
217	CURAZAO	ST. DOMINGO	07/03/13	E1	31
218	MONTEVIDEO	EZEIZA	07/03/13	E2	51
219	ATLANTICO	MONTEVIDEO	07/03/13	E2	29
220	LIMA	GUAYAQUIL	08/03/13	E1	23
221	LIMA	GUAYAQUIL	08/03/13	E2	45
224	BOGOTA	GUAYAQUIL	08/03/13	E2	22
225	BOGOTA	GUAYAQUIL	08/03/13	E1	31
226	MONTEVIDEO	EZEIZA	08/03/13	E2	51
227	ATLANTICO	MONTEVIDEO	08/03/13	E2	39

LHD Sequence	FIR suffering the risk	FIR generating the risk	Date of the event	GTE Code	Risk Value
229	BOGOTA	GUAYAQUIL	08/03/13	E1	30
230	LIMA	AMAZONICA	09/03/13	E1	39
231	LIMA	LA PAZ	09/03/13	E1	39
232	BOGOTA	GUAYAQUIL	09/03/13	E1	35
233	ST. DOMINGO	CURAZAO	09/03/13	E2	25
234	RECIFE	BRASILIA	10/03/13	E2	22
235	LIMA	GUAYAQUIL	10/03/13	E1	39
236	ANTOFAGASTA	LIMA	11/03/13	E1	44
238	MONTEVIDEO	EZEIZA	12/03/13	E2	51
239	ATLANTICO	MONTEVIDEO	12/03/13	E2	39
241	CURAZAO	ST. DOMINGO	13/03/13	E1	35
243	CORDOBA	ANTOFAGASTA	13/03/13	E1	41
245	GUAYAQUIL	BOGOTA	13/03/13	E2	51
246	BOGOTA	GUAYAQUIL	13/03/13	E1	31
248	BOGOTA	MAIQUETIA	13/03/13	E2	22
255	BOGOTA	PANAMA	16/03/13	E1	31
256	GUAYAQUIL	LIMA	16/03/13	E2	27
257	LIMA	BOGOTA	16/03/13	E2	51
258	LIMA	BOGOTA	16/03/13	E2	51
259	LIMA	GUAYAQUIL	17/03/13	E2	51
262	CURAZAO	BARRANQUILLA	18/03/13	E1	31
263	BOGOTA	GUAYAQUIL	18/03/13	E1	41
265	MAIQUETIA	AMAZONICA	18/03/13	E2	39
266	BOGOTA	GUAYAQUIL	18/03/13	E1	35
269	ST. DOMINGO	PORT AU PRINCE	20/03/13	E2	25
270	CURAZAO	ST. DOMINGO	21/03/13	E1	31
271	CURAZAO	MAIQUETIA	21/03/13	E1	31
272	MONTEVIDEO	EZEIZA	21/03/13	E2	51
273	ATLANTICO	MONTEVIDEO	21/03/13	E2	39
275	BOGOTA	GUAYAQUIL	22/03/13	E1	39
277	KINGSTON	CURAZAO	23/03/13	E2	39
278	ST. DOMINGO	CURAZAO	23/03/13	E2	25
280	BOGOTA	GUAYAQUIL	23/03/13	E1	39
283	CURAZAO	ST. DOMINGO	24/03/13	E1	31
284	BOGOTA	GUAYAQUIL	24/03/13	E1	31
287	PORT AU PRINCE	ST. DOMINGO	24/03/13	E1	30

LHD Sequence	FIR suffering the risk	FIR generating the risk	Date of the event	GTE Code	Risk Value
288	LIMA	GUAYAQUIL	26/03/13	E1	23
289	MONTEVIDEO	EZEIZA	26/03/13	E2	39
291	ANTOFAGASTA	LIMA	26/03/13	E1	30
293	MONTEVIDEO	EZEIZA	27/03/13	E2	51
294	ATLANTICO	MONTEVIDEO	27/03/13	E2	22
296	BOGOTA	GUAYAQUIL	28/03/13	E1	31
297	CURAZAO	ST. DOMINGO	28/03/13	E2	45
302	BOGOTA	GUAYAQUIL	29/03/13	E2	60
303	CURAZAO	ST. DOMINGO	29/03/13	E1	35
304	CURAZAO	BARRANQUILLA	29/03/13	E1	31
305	ST. DOMINGO	PORT AU PRINCE	29/03/13	E2	22
306	PANAMA	KINGSTON	30/03/13	E2	34
307	BOGOTA	GUAYAQUIL	31/03/13	E1	31
308	CURAZAO	ST. DOMINGO	31/03/13	E1	35
309	BOGOTA	GUAYAQUIL	31/03/13	E1	35
310	MONTEVIDEO	EZEIZA	31/03/13	E2	51
311	ATLANTICO	MONTEVIDEO	31/03/13	E2	39
312	ANTOFAGASTA	LIMA	31/03/13	E2	39
322	BOGOTA	GUAYAQUIL	03/04/13	E1	31
323	BOGOTA	GUAYAQUIL	03/04/13	E1	35
324	ATLANTICO	MONTEVIDEO	04/04/13	E2	39
326	BOGOTA	LIMA	04/04/13	E2	46
328	BOGOTA	GUAYAQUIL	04/04/13	E2	22
330	BOGOTA	GUAYAQUIL	04/04/13	E1	41
331	RESISTENCIA	EZEIZA	05/04/13	E1	31
332	ATLANTICO	MONTEVIDEO	05/04/13	E2	39
333	RESISTENCIA	ASUNCION	06/04/13	E1	31
334	BOGOTA	GUAYAQUIL	07/04/13	E2	45
336	GUAYAQUIL	BOGOTA	07/04/13	E2	22
340	BOGOTA	GUAYAQUIL	08/04/13	E1	31
344	GUAYAQUIL	CENTRAL AMERICA	09/04/13	E1	26
345	RESISTENCIA	EZEIZA	09/04/13	E1	31
346	MONTEVIDEO	EZEIZA	09/04/13	E2	39
347	CURAZAO	ST. DOMINGO	09/04/13	E1	35
348	ATLANTICO	MONTEVIDEO	09/04/13	E2	39
349	LIMA	BOGOTA	10/04/13	E2	27

LHD Sequence	FIR suffering the risk	FIR generating the risk	Date of the event	GTE Code	Risk Value
350	ATLANTICO	MONTEVIDEO	10/04/13	E2	39
351	BOGOTA	GUAYAQUIL	11/04/13	E2	45
352	LIMA	GUAYAQUIL	11/04/13	E1	35
353	GUAYAQUIL	LIMA	11/04/13	E1	35
357	GUAYAQUIL	LIMA	12/04/13	E2	25
358	GUAYAQUIL	LIMA	12/04/13	E2	25
359	ATLANTICO	MONTEVIDEO	12/04/13	E2	39
365	ANTOFAGASTA	CORDOBA	13/04/13	E1	34
366	PORT AU PRINCE	ST. DOMINGO	14/04/13	E1	31
367	BOGOTA	GUAYAQUIL	15/04/13	E1	31
368	BOGOTA	GUAYAQUIL	15/04/13	E1	31
369	MONTEVIDEO	ATLANTICO	15/04/13	E2	27
372	LIMA	GUAYAQUIL	16/04/13	E2	45
374	CURAZAO	BARRANQUILLA	16/04/13	E1	31
378	RESISTENCIA	EZEIZA	17/04/13	E1	31
380	BOGOTA	GUAYAQUIL	17/04/13	E1	35
382	PORT AU PRINCE	ST. DOMINGO	17/04/13	E2	45
384	BOGOTA	MAIQUETIA	18/04/13	E2	22
385	CURAZAO	ST. DOMINGO	18/04/13	E1	35
386	MONTEVIDEO	ATLANTICO	18/04/13	E2	27
387	CURAZAO	BARRANQUILLA	18/04/13	E1	31
388	GUAYAQUIL	LIMA	18/04/13	E1	23
391	BOGOTA	GUAYAQUIL	19/04/13	E1	21
393	ATLANTICO	MONTEVIDEO	19/04/13	E2	39
394	GUAYAQUIL	BOGOTA	19/04/13	E1	23
395	LIMA	GUAYAQUIL	19/04/13	E2	51
396	CORDOBA	LA PAZ	20/04/13	E1	31
397	LIMA	LA PAZ	20/04/13	E1	31
399	BOGOTA	LIMA	21/04/13	E1	31
400	CURAZAO	ST. DOMINGO	21/04/13	E2	45
401	BARRANQUILLA	CURAZAO	21/04/13	E2	22
403	BOGOTA	GUAYAQUIL	22/04/13	E1	35
404	LIMA	AMAZONICA	22/04/13	E2	51
407	ASUNCION	LA PAZ	23/04/13	E2	39
409	GUAYAQUIL	CENTRAL AMERICA	23/04/13	E1	23
412	PORT AU PRINCE	ST. DOMINGO	23/04/13	E2	45

LHD Sequence	FIR suffering the risk	FIR generating the risk	Date of the event	GTE Code	Risk Value
413	BOGOTA	GUAYAQUIL	24/04/13	E1	31
414	BOGOTA	GUAYAQUIL	24/04/13	E1	31
415	RESISTENCIA	CORDOBA	24/04/13	E2	49
416	BOGOTA	GUAYAQUIL	24/04/13	E1	31
417	BOGOTA	GUAYAQUIL	24/04/13	E1	35
418	BOGOTA	GUAYAQUIL	24/04/13	E1	31
419	BOGOTA	GUAYAQUIL	24/04/13	E2	51
425	ASUNCION	LA PAZ	27/04/13	E2	39
426	LIMA	GUAYAQUIL	27/04/13	E2	39
427	BARRANQUILLA	PANAMA	28/04/13	E2	22
429	ANTOFAGASTA	LIMA	28/04/13	E2	25
431	LIMA	GUAYAQUIL	29/04/13	E2	39
433	CAYENNE	PIARCO	29/04/13	E1	31
434	BOGOTA	GUAYAQUIL	30/04/13	E2	34
436	BOGOTA	GUAYAQUIL	30/04/13	E1	31
437	ATLANTICO	MONTEVIDEO	30/04/13	E2	39
439	BOGOTA	GUAYAQUIL	01/05/13	E1	35
440	BOGOTA	GUAYAQUIL	01/05/13	E1	39
443	CENTRAL AMERICA	GUAYAQUIL	02/05/13	E2	39
445	BOGOTA	GUAYAQUIL	02/05/13	E1	45
449	LIMA	LA PAZ	03/05/13	E2	27
450	BOGOTA	GUAYAQUIL	03/05/13	E1	31
452	BOGOTA	GUAYAQUIL	04/05/13	E2	22
453	BOGOTA	GUAYAQUIL	04/05/13	E1	31
454	BOGOTA	GUAYAQUIL	04/05/13	E2	39
457	CURAZAO	ST. DOMINGO	04/05/13	E2	39
461	CENTRAL AMERICA	BOGOTA	04/05/13	E2	34
462	LIMA	LA PAZ	05/05/13	E1	31
464	CENTRAL AMERICA	ISLA DE PASCUA	05/05/13	E2	61
465	CORDOBA	LA PAZ	05/05/13	E2	34
466	LIMA	GUAYAQUIL	05/05/13	E2	39
467	CENTRAL AMERICA	GUAYAQUIL	06/05/13	E1	26
470	RESISTENCIA	ASUNCION	07/05/13	E1	26
471	GUAYAQUIL	BOGOTA	07/05/13	E2	25
472	MONTEVIDEO	EZEIZA	07/05/13	E2	51
473	ATLANTICO	MONTEVIDEO	07/05/13	E2	39

LHD Sequence	FIR suffering the risk	FIR generating the risk	Date of the event	GTE Code	Risk Value
474	BOGOTA	GUAYAQUIL	07/05/13	E2	22
475	LIMA	BOGOTA	07/05/13	E2	39
476	LIMA	GUAYAQUIL	08/05/13	E1	23
477	CENTRAL AMERICA	GUAYAQUIL	08/05/13	E2	34
478	BOGOTA	GUAYAQUIL	08/05/13	E1	31
481	CENTRAL AMERICA	GUAYAQUIL	08/05/13	E1	34
482	CENTRAL AMERICA	BOGOTA	08/05/13	E2	34
483	LIMA	GUAYAQUIL	09/05/13	E2	39
484	BOGOTA	GUAYAQUIL	09/05/13	E1	35
485	LIMA	GUAYAQUIL	09/05/13	E1	31
488	CORDOBA	LA PAZ	10/05/13	E2	34
489	MONTEVIDEO	EZEIZA	10/05/13	E2	51
490	ATLANTICO	MONTEVIDEO	10/05/13	E2	22
491	BOGOTA	GUAYAQUIL	10/05/13	E1	31
492	LIMA	BOGOTA	10/05/13	E1	31
493	BOGOTA	GUAYAQUIL	11/05/13	E1	35
494	CURAZAO	ST. DOMINGO	11/05/13	E1	31
495	BOGOTA	GUAYAQUIL	12/05/13	E2	60
496	BOGOTA	GUAYAQUIL	12/05/13	E2	51
498	BOGOTA	GUAYAQUIL	12/05/13	E1	31
499	LIMA	GUAYAQUIL	12/05/13	E2	39
500	LIMA	GUAYAQUIL	12/05/13	E2	27
502	BOGOTA	GUAYAQUIL	13/05/13	E1	39
504	CURAZAO	ST. DOMINGO	13/05/13	E1	35
505	CURAZAO	ST. DOMINGO	13/05/13	C	45
507	ST. DOMINGO	PORT AU PRINCE	14/05/13	E2	22
511	RESISTENCIA	MONTEVIDEO	14/05/13	E2	34
512	LIMA	GUAYAQUIL	14/05/13	E1	31
515	MONTEVIDEO	EZEIZA	15/05/13	E2	51
516	ATLANTICO	MONTEVIDEO	15/05/13	E2	51
517	LIMA	GUAYAQUIL	17/05/13	E2	39
518	BOGOTA	GUAYAQUIL	17/05/13	E1	31
519	GUAYAQUIL	LIMA	17/05/13	E2	22
521	CORDOBA	LA PAZ	18/05/13	E1	26
523	ST. DOMINGO	PORT AU PRINCE	19/05/13	E2	22
525	BOGOTA	AMAZONICA	19/05/13	E2	22

LHD Sequence	FIR suffering the risk	FIR generating the risk	Date of the event	GTE Code	Risk Value
528	ST. DOMINGO	PORT AU PRINCE	19/05/13	E2	25
530	BOGOTA	GUAYAQUIL	20/05/13	E1	35
531	LIMA	GUAYAQUIL	20/05/13	E2	45
534	BOGOTA	GUAYAQUIL	23/05/13	E2	60
535	LIMA	GUAYAQUIL	23/05/13	E2	39
536	LIMA	GUAYAQUIL	23/05/13	E1	31
537	CURITIBA	MONTEVIDEO	23/05/13	E2	22
538	CURITIBA	MONTEVIDEO	23/05/13	E2	22
539	CURITIBA	MONTEVIDEO	23/05/13	E2	22
540	CURITIBA	MONTEVIDEO	23/05/13	E2	22
544	BARRANQUILLA	KINGSTON	24/05/13	E2	27
545	MONTEVIDEO	EZEIZA	24/05/13	E2	51
546	ATLANTICO	MONTEVIDEO	24/05/13	E2	39
547	CENTRAL AMERICA	BOGOTA	25/05/13	E2	34
548	ANTOFAGASTA	LIMA	25/05/13	E1	25
549	LIMA	GUAYAQUIL	25/05/13	E1	31
550	CENTRAL AMERICA	GUAYAQUIL	25/05/13	E1	26
551	BOGOTA	PANAMA	26/05/13	E2	22
555	LIMA	BOGOTA	26/05/13	E2	27
556	BOGOTA	GUAYAQUIL	27/05/13	E2	45
557	BOGOTA	GUAYAQUIL	27/05/13	E2	45
558	BOGOTA	GUAYAQUIL	27/05/13	E2	22
560	BOGOTA	GUAYAQUIL	28/05/13	E1	35
561	BOGOTA	GUAYAQUIL	28/05/13	E2	51
562	MONTEVIDEO	EZEIZA	28/05/13	E2	51
563	ATLANTICO	MONTEVIDEO	28/05/13	E2	51
566	BOGOTA	GUAYAQUIL	29/05/13	E1	35
568	LIMA	GUAYAQUIL	30/05/13	E1	31
570	LIMA	BOGOTA	30/05/13	E2	27
571	LIMA	GUAYAQUIL	30/05/13	E2	27
572	LA PAZ	AMAZONICA	30/05/13	E2	27
573	CENTRAL AMERICA	BOGOTA	31/05/13	E2	46
574	GEORGETOWN	PARAMARIBO	01/06/13	E2	46
575	PIARCO	PARAMARIBO	02/06/13	E1	31
577	MAIQUETIA	BOGOTA	03/06/13	E2	22
578	GUAYAQUIL	LIMA	03/06/13	E2	39

LHD Sequence	FIR suffering the risk	FIR generating the risk	Date of the event	GTE Code	Risk Value
579	PARAMARIBO	GEORGETOWN	03/06/13	E1	31
580	RESISTENCIA	EZEIZA	03/06/13	E1	31
586	LIMA	GUAYAQUIL	04/06/13	E2	45
591	BOGOTA	GUAYAQUIL	04/06/13	E2	39
594	CURAZAO	ST. DOMINGO	05/06/13	E1	35
595	CURAZAO	ST. DOMINGO	06/06/13	E1	35
597	BOGOTA	GUAYAQUIL	06/06/13	E2	39
600	LIMA	GUAYAQUIL	06/06/13	E2	39
603	RESISTENCIA	EZEIZA	08/06/13	E1	31
604	BOGOTA	GUAYAQUIL	08/06/13	E1	35
605	CENTRAL AMERICA	GUAYAQUIL	08/06/13	E1	26
606	BOGOTA	GUAYAQUIL	09/06/13	E2	51
607	BOGOTA	GUAYAQUIL	09/06/13	E1	31
608	CURAZAO	ST. DOMINGO	10/06/13	E2	45
609	MAIQUETIA	AMAZONICA	10/06/13	E1	31
610	PORT AU PRINCE	ST. DOMINGO	10/06/13	E2	45
611	PORT AU PRINCE	ST. DOMINGO	10/06/13	E1	35
614	LIMA	GUAYAQUIL	12/06/13	E1	31
617	BOGOTA	GUAYAQUIL	12/06/13	E2	22
618	LIMA	GUAYAQUIL	13/06/13	E1	25
619	AMAZONICA	LIMA	14/06/13	E1	23
621	BOGOTA	PANAMA	15/06/13	E2	22
627	ANTOFAGASTA	LIMA	17/06/13	E1	34
629	CURAZAO	ST. DOMINGO	17/06/13	C	45
630	CURAZAO	ST. DOMINGO	17/06/13	E1	35
633	CURAZAO	ST. DOMINGO	17/06/13	E1	35
637	MONTEVIDEO	EZEIZA	18/06/13	E2	51
638	ATLANTICO	MONTEVIDEO	18/06/13	E2	39
640	AMAZONICA	BOGOTA	19/06/13	E2	22
641	CENTRAL AMERICA	BOGOTA	19/06/13	E2	34
642	LIMA	BOGOTA	19/06/13	E2	39
643	ST. DOMINGO	CURAZAO	19/06/13	E2	22
645	BOGOTA	GUAYAQUIL	19/06/13	E2	22
646	LIMA	GUAYAQUIL	20/06/13	E2	39
648	ANTOFAGASTA	LIMA	20/06/13	E2	46
649	GUAYAQUIL	LIMA	20/06/13	E1	31

LHD Sequence	FIR suffering the risk	FIR generating the risk	Date of the event	GTE Code	Risk Value
650	BOGOTA	GUAYAQUIL	20/06/13	E2	39
651	BOGOTA	GUAYAQUIL	21/06/13	E2	39
652	BOGOTA	GUAYAQUIL	21/06/13	E1	31
653	CURAZAO	BARRANQUILLA	21/06/13	E1	41
654	MONTEVIDEO	EZEIZA	21/06/13	E2	51
655	ATLANTICO	MONTEVIDEO	21/06/13	E2	39
656	CURAZAO	ST. DOMINGO	21/06/13	E1	35
658	LIMA	GUAYAQUIL	22/06/13	E1	31
659	LIMA	GUAYAQUIL	22/06/13	E1	31
660	PORT AU PRINCE	ST. DOMINGO	22/06/13	E1	31
662	PORT AU PRINCE	ST. DOMINGO	23/06/13	E1	31
663	BOGOTA	GUAYAQUIL	23/06/13	E1	35
665	BOGOTA	AMAZONICA	24/06/13	E2	22
666	CURAZAO	ST. DOMINGO	25/06/13	E2	45
667	MONTEVIDEO	EZEIZA	25/06/13	E2	51
668	ATLANTICO	MONTEVIDEO	25/06/13	E2	39
669	BOGOTA	GUAYAQUIL	26/06/13	E1	31
671	ST. DOMINGO	PORT AU PRINCE	26/06/13	E2	22
672	CURAZAO	ST. DOMINGO	26/06/13	E1	41
673	BOGOTA	GUAYAQUIL	27/06/13	E2	60
674	CENTRAL AMERICA	GUAYAQUIL	27/06/13	E1	34
675	PARAMARIBO	PIARCO	28/06/13	E1	26
680	PANAMA	CENTRAL AMERICA	30/06/13	E1	34
681	BOGOTA	PANAMA	30/06/13	E1	39
682	ASUNCION	LA PAZ	30/06/13	C	33
685	MONTEVIDEO	EZEIZA	30/06/13	E2	51
686	ATLANTICO	MONTEVIDEO	30/06/13	E2	39
687	ASUNCION	LA PAZ	01/07/13	E2	39
690	BOGOTA	GUAYAQUIL	02/07/13	E1	31
691	BOGOTA	GUAYAQUIL	02/07/13	E2	22
692	MONTEVIDEO	EZEIZA	02/07/13	E2	51
693	ATLANTICO	MONTEVIDEO	02/07/13	E2	39
697	CURAZAO	ST. DOMINGO	03/07/13	E1	30
698	CURAZAO	ST. DOMINGO	03/07/13	E1	30
699	CURAZAO	ST. DOMINGO	03/07/13	E1	30
700	BOGOTA	GUAYAQUIL	03/07/13	E1	31

LHD Sequence	FIR suffering the risk	FIR generating the risk	Date of the event	GTE Code	Risk Value
701	BOGOTA	PANAMA	04/07/13	E1	31
702	PANAMA	CENTRAL AMERICA	04/07/13	E2	39
703	BOGOTA	PANAMA	04/07/13	E2	51
704	ANTOFAGASTA	LIMA	04/07/13	E1	25
705	LIMA	GUAYAQUIL	04/07/13	E2	39
706	LIMA	GUAYAQUIL	04/07/13	E1	35
711	LIMA	GUAYAQUIL	05/07/13	E1	31
713	MONTEVIDEO	EZEIZA	05/07/13	E2	51
714	ATLANTICO	MONTEVIDEO	05/07/13	E2	39
717	LIMA	LA PAZ	06/07/13	E2	39
719	ANTOFAGASTA	LIMA	06/07/13	E1	26
720	BOGOTA	GUAYAQUIL	06/07/13	E2	34
721	CURAZAO	ST. DOMINGO	06/07/13	E1	30
722	RESISTENCIA	CORDOBA	06/07/13	E2	34
723	MAIQUETIA	BOGOTA	07/07/13	E2	22
724	LIMA	GUAYAQUIL	07/07/13	E2	51
726	GUAYAQUIL	LIMA	07/07/13	E1	31
727	CURAZAO	ST. DOMINGO	07/07/13	E2	40
728	LIMA	ANTOFAGASTA	08/07/13	E1	31
729	LIMA	ANTOFAGASTA	08/07/13	E1	35
731	CURAZAO	ST. DOMINGO	08/07/13	E1	30
732	PORT AU PRINCE	ST. DOMINGO	08/07/13	E1	26
733	CURAZAO	ST. DOMINGO	08/07/13	E1	30
734	LIMA	GUAYAQUIL	09/07/13	E1	23
735	LIMA	GUAYAQUIL	09/07/13	E1	31
741	BOGOTA	PANAMA	10/07/13	E1	31
742	CURAZAO	ST. DOMINGO	10/07/13	E2	39
745	BOGOTA	GUAYAQUIL	10/07/13	E2	22
746	CURAZAO	KINGSTON	10/07/13	E1	26
747	CURAZAO	ST. DOMINGO	10/07/13	E1	30
748	LIMA	GUAYAQUIL	11/07/13	E1	35
750	BOGOTA	GUAYAQUIL	12/07/13	E1	35
751	LIMA	AMAZONICA	12/07/13	E2	39
753	BOGOTA	GUAYAQUIL	13/07/13	E2	45
754	RESISTENCIA	EZEIZA	13/07/13	E2	34
755	CURAZAO	ST. DOMINGO	13/07/13	E1	30

LHD Sequence	FIR suffering the risk	FIR generating the risk	Date of the event	GTE Code	Risk Value
756	CURAZAO	ST. DOMINGO	13/07/13	E1	30
757	LIMA	ANTOFAGASTA	14/07/13	E2	39
759	LIMA	GUAYAQUIL	15/07/13	E1	31
760	LIMA	GUAYAQUIL	15/07/13	E1	31
761	BOGOTA	GUAYAQUIL	15/07/13	E2	45
762	CURAZAO	ST. DOMINGO	15/07/13	E1	30
763	CENTRAL AMERICA	PANAMA	15/07/13	E1	26
764	BOGOTA	GUAYAQUIL	16/07/13	E1	39
766	BOGOTA	GUAYAQUIL	16/07/13	E1	31
767	BOGOTA	GUAYAQUIL	16/07/13	E1	31
770	BOGOTA	GUAYAQUIL	17/07/13	E1	35
773	LIMA	GUAYAQUIL	18/07/13	E1	23
774	BOGOTA	GUAYAQUIL	18/07/13	E1	31
775	CAYENNE	AMAZONICA	19/07/13	E1	31
777	HABANA	CENTRAL AMERICA	19/07/13	E2	22
780	ST. DOMINGO	CURAZAO	20/07/13	E2	22
781	BOGOTA	GUAYAQUIL	20/07/13	E1	31
783	CURAZAO	ST. DOMINGO	22/07/13	E1	35
785	RESISTENCIA	EZEIZA	22/07/13	E1	26
786	CURAZAO	PORT AU PRINCE	22/07/13	E1	26
787	CURAZAO	ST. DOMINGO	22/07/13	E1	30
788	BOGOTA	GUAYAQUIL	24/07/13	E1	31
789	CURAZAO	ST. DOMINGO	24/07/13	E2	34
790	BOGOTA	GUAYAQUIL	24/07/13	E1	31
791	PIARCO	PARAMARIBO	26/07/13	E1	31
792	LIMA	GUAYAQUIL	26/07/13	E2	45
793	LIMA	LA PAZ	26/07/13	E2	39
796	PIARCO	GEORGETOWN	27/07/13	E1	26
797	BOGOTA	GUAYAQUIL	27/07/13	E2	45
798	CURAZAO	ST. DOMINGO	27/07/13	E1	30
799	CURAZAO	ST. DOMINGO	27/07/13	E1	45
800	CURAZAO	ST. DOMINGO	27/07/13	E1	35
801	CURAZAO	ST. DOMINGO	28/07/13	E1	26
802	ANTOFAGASTA	LIMA	28/07/13	E1	26
803	LIMA	ANTOFAGASTA	28/07/13	E1	35
804	LA PAZ	LIMA	29/07/13	E1	21

LHD Sequence	FIR suffering the risk	FIR generating the risk	Date of the event	GTE Code	Risk Value
805	HABANA	CENTRAL AMERICA	29/07/13	E1	31
807	LIMA	GUAYAQUIL	30/07/13	E1	23
809	LIMA	GUAYAQUIL	30/07/13	E1	31
810	LIMA	AMAZONICA	31/07/13	E1	31
811	LIMA	GUAYAQUIL	31/07/13	E2	45
812	MAIQUETIA	BOGOTA	31/07/13	E2	22
814	LIMA	GUAYAQUIL	01/08/13	E1	31
819	MONTEVIDEO	EZEIZA	01/08/13	E2	27
820	ATLANTICO	MONTEVIDEO	01/08/13	E2	27
822	LIMA	GUAYAQUIL	02/08/13	E1	31
823	MONTEVIDEO	EZEIZA	02/08/13	E2	27
824	ATLANTICO	MONTEVIDEO	02/08/13	E2	27
825	GUAYAQUIL	BOGOTA	02/08/13	E2	25
826	GUAYAQUIL	LIMA	02/08/13	E1	23
828	CAYENNE	PIARCO	03/08/13	E1	49
831	BOGOTA	GUAYAQUIL	03/08/13	E1	31
833	LIMA	ANTOFAGASTA	03/08/13	E1	31
834	LIMA	GUAYAQUIL	05/08/13	E1	31
835	BOGOTA	GUAYAQUIL	05/08/13	E2	34
837	ST. DOMINGO	PORT AU PRINCE	06/08/13	E2	22
838	MONTEVIDEO	EZEIZA	06/08/13	E2	27
839	ATLANTICO	MONTEVIDEO	06/08/13	E2	39
840	LIMA	GUAYAQUIL	07/08/13	E1	31
844	LA PAZ	LIMA	08/08/13	E1	23
846	CURAZAO	ST. DOMINGO	08/08/13	E1	35
847	BOGOTA	GUAYAQUIL	08/08/13	E1	31
848	LA PAZ	LIMA	09/08/13	E1	31
849	ST. DOMINGO	PORT AU PRINCE	09/08/13	E2	22
851	RESISTENCIA	EZEIZA	10/08/13	E1	26
853	CURAZAO	ST. DOMINGO	10/08/13	E1	30
854	CURAZAO	ST. DOMINGO	10/08/13	E1	30
855	LIMA	GUAYAQUIL	11/08/13	E2	60
856	BOGOTA	GUAYAQUIL	11/08/13	E2	22
858	CURAZAO	ST. DOMINGO	11/08/13	E2	40
859	LIMA	GUAYAQUIL	12/08/13	E1	31
860	BOGOTA	GUAYAQUIL	13/08/13	E1	31

LHD Sequence	FIR suffering the risk	FIR generating the risk	Date of the event	GTE Code	Risk Value
861	LIMA	GUAYAQUIL	13/08/13	E2	39
862	LIMA	BOGOTA	13/08/13	E1	31
863	BOGOTA	GUAYAQUIL	13/08/13	E1	31
864	HABANA	CENTRAL AMERICA	13/08/13	E2	22
866	LA PAZ	LIMA	13/08/13	E1	31
868	MAIQUETIA	PIARCO	13/08/13	E1	26
869	BOGOTA	GUAYAQUIL	13/08/13	E2	39
871	CURAZAO	ST. DOMINGO	13/08/13	E1	35
872	RESISTENCIA	EZEIZA	14/08/13	E1	26
873	RESISTENCIA	CORDOBA	15/08/13	E1	26
875	PORT AU PRINCE	ST. DOMINGO	16/08/13	E2	45
876	ATLANTICO	AMAZONICA	16/08/13	E1	39
877	CAYENNE	ATLANTICO	16/08/13	E1	31
878	BOGOTA	GUAYAQUIL	16/08/13	E2	39
879	MONTEVIDEO	EZEIZA	16/08/13	E2	27
880	ATLANTICO	MONTEVIDEO	16/08/13	E2	39
882	CURITIBA	LA PAZ	16/08/13	E2	22
883	LIMA	LA PAZ	17/08/13	E2	51
885	RESISTENCIA	EZEIZA	17/08/13	E1	26
886	ANTOFAGASTA	LIMA	18/08/13	E1	40
889	LIMA	LA PAZ	18/08/13	E2	39
890	LIMA	GUAYAQUIL	18/08/13	E1	35
891	LIMA	GUAYAQUIL	19/08/13	E1	31
892	RESISTENCIA	CURITIBA	19/08/13	E2	34
893	LIMA	BOGOTA	19/08/13	E1	31
894	CURAZAO	ST. DOMINGO	20/08/13	E1	35
896	CURAZAO	ST. DOMINGO	20/08/13	E1	40
898	BOGOTA	PANAMA	22/08/13	E1	31
905	CURAZAO	ST. DOMINGO	23/08/13	E2	34
907	GEORGETOWN	PARAMARIBO	24/08/13	E1	34
908	RESISTENCIA	CORDOBA	24/08/13	E1	26
912	BOGOTA	PANAMA	25/08/13	E2	22
913	BOGOTA	GUAYAQUIL	25/08/13	E1	31
914	MONTEVIDEO	EZEIZA	25/08/13	E2	27
915	ATLANTICO	MONTEVIDEO	25/08/13	E2	39
916	CURAZAO	ST. DOMINGO	25/08/13	E1	35

LHD Sequence	FIR suffering the risk	FIR generating the risk	Date of the event	GTE Code	Risk Value
917	BOGOTA	PANAMA	25/08/13	E1	31
918	LIMA	ANTOFAGASTA	25/08/13	E1	30
919	LIMA	AMAZONICA	28/08/13	E2	39
920	BOGOTA	GUAYAQUIL	28/08/13	E2	39
921	GUAYAQUIL	LIMA	28/08/13	E1	31
922	RESISTENCIA	EZEIZA	28/08/13	E1	26
924	GUAYAQUIL	BOGOTA	29/08/13	E2	25
926	ASUNCION	LA PAZ	29/08/13	E2	34
928	LIMA	GUAYAQUIL	30/08/13	E1	23
932	BOGOTA	GUAYAQUIL	31/08/13	E1	35
934	LIMA	GUAYAQUIL	01/09/13	E2	39
935	LA PAZ	LIMA	02/09/13	E1	31
936	CENTRAL AMERICA	GUAYAQUIL	02/09/13	E2	34
939	CENTRAL AMERICA	BOGOTA	02/09/13	E2	34
940	KINGSTON	BARRANQUILLA	03/09/13	E1	26
941	MONTEVIDEO	EZEIZA	03/09/13	E2	51
942	ATLANTICO	MONTEVIDEO	03/09/13	E2	39
943	LIMA	GUAYAQUIL	04/09/13	E1	31
944	LIMA	GUAYAQUIL	04/09/13	E1	31
946	LIMA	GUAYAQUIL	04/09/13	E2	45
949	GUAYAQUIL	CENTRAL AMERICA	05/09/13	E2	34
956	LIMA	LA PAZ	06/09/13	E1	31
957	BOGOTA	PANAMA	06/09/13	E2	22
958	LIMA	ANTOFAGASTA	06/09/13	E1	31
959	CORDOBA	LA PAZ	07/09/13	E1	31
960	LIMA	GUAYAQUIL	08/09/13	E1	35
963	CURAZAO	MAIQUETIA	08/09/13	E1	21
964	CURAZAO	KINGSTON	08/09/13	E1	26
965	LIMA	BOGOTA	08/09/13	E1	31
966	RESISTENCIA	CORDOBA	09/09/13	E1	31
967	RESISTENCIA	CURITIBA	09/09/13	E2	39
968	RESISTENCIA	EZEIZA	09/09/13	E1	31
969	CURITIBA	BRASILIA	09/09/13	E1	31
970	ST. DOMINGO	PORT AU PRINCE	09/09/13	E2	25
971	ST. DOMINGO	CURAZAO	09/09/13	E1	31
972	ST. DOMINGO	CURAZAO	09/09/13	E2	25

LHD Sequence	FIR suffering the risk	FIR generating the risk	Date of the event	GTE Code	Risk Value
975	HABANA	CENTRAL AMERICA	10/09/13	E2	22
977	BARRANQUILLA	CURAZAO	10/09/13	E1	26
978	BOGOTA	GUAYAQUIL	10/09/13	E1	35
979	MONTEVIDEO	EZEIZA	10/09/13	E2	49
980	ATLANTICO	MONTEVIDEO	10/09/13	E2	39
981	LIMA	BOGOTA	10/09/13	E1	31
982	ASUNCION	LA PAZ	11/09/13	E1	26
984	RESISTENCIA	EZEIZA	12/09/13	E1	33
986	ASUNCION	LA PAZ	13/09/13	E1	26
987	MONTEVIDEO	EZEIZA	13/09/13	E2	39
988	ATLANTICO	MONTEVIDEO	13/09/13	E2	51
989	BOGOTA	GUAYAQUIL	14/09/13	E1	31
992	BOGOTA	GUAYAQUIL	16/09/13	E2	39
993	LIMA	AMAZONICA	16/09/13	E1	31
996	ANTOFAGASTA	LIMA	16/09/13	E2	25
999	MONTEVIDEO	EZEIZA	17/09/13	E2	51
1000	ATLANTICO	MONTEVIDEO	17/09/13	E2	39
1005	MONTEVIDEO	EZEIZA	20/09/13	E2	39
1006	ATLANTICO	MONTEVIDEO	20/09/13	E2	27
1008	MONTEVIDEO	EZEIZA	21/09/13	E2	39
1009	ATLANTICO	MONTEVIDEO	21/09/13	E2	27
1011	CURAZAO	BARRANQUILLA	22/09/13	E2	34
1013	ANTOFAGASTA	LIMA	22/09/13	E2	22
1019	LIMA	GUAYAQUIL	24/09/13	E2	27
1020	LIMA	GUAYAQUIL	24/09/13	E2	27
1021	LIMA	GUAYAQUIL	24/09/13	E2	27
1022	ANTOFAGASTA	LIMA	25/09/13	E2	22
1023	RESISTENCIA	EZEIZA	25/09/13	E1	23
1025	CURAZAO	ST. DOMINGO	26/09/13	E1	30
1027	ASUNCION	LA PAZ	27/09/13	E2	34
1028	MONTEVIDEO	EZEIZA	27/09/13	E2	39
1029	ATLANTICO	MONTEVIDEO	27/09/13	E2	27
1031	ANTOFAGASTA	LIMA	28/09/13	E1	25
1033	ASUNCION	LA PAZ	29/09/13	E2	34
1035	RESISTENCIA	EZEIZA	29/09/13	E1	23
1039	CURAZAO	PORT AU PRINCE	01/10/13	E1	26

LHD Sequence	FIR suffering the risk	FIR generating the risk	Date of the event	GTE Code	Risk Value
1042	BOGOTA	GUAYAQUIL	02/10/13	E1	31
1045	BOGOTA	GUAYAQUIL	02/10/13	E1	35
1046	CURAZAO	ST. DOMINGO	02/10/13	E1	30
1047	BOGOTA	GUAYAQUIL	02/10/13	E1	31
1050	PORT AU PRINCE	HABANA	03/10/13	E2	27
1053	ANTOFAGASTA	LIMA	04/10/13	E1	31
1055	PORT AU PRINCE	ST. DOMINGO	04/10/13	E1	25
1056	BOGOTA	GUAYAQUIL	05/10/13	E2	39
1058	CURAZAO	ST. DOMINGO	05/10/13	E2	34
1060	LIMA	BOGOTA	06/10/13	E2	22
1062	CENTRAL AMERICA	GUAYAQUIL	06/10/13	E2	34
1063	CURAZAO	MAIQUETIA	06/10/13	E2	34
1064	ASUNCION	LA PAZ	07/10/13	E1	26
1067	ST. DOMINGO	CURAZAO	07/10/13	E2	25
1071	PORT AU PRINCE	ST. DOMINGO	08/10/13	E2	39
1075	MONTEVIDEO	EZEIZA	09/10/13	E2	39
1076	ATLANTICO	MONTEVIDEO	09/10/13	E2	22
1077	CURAZAO	ST. DOMINGO	09/10/13	E1	30
1079	RESISTENCIA	CORDOBA	10/10/13	E1	26
1082	ANTOFAGASTA	LIMA	10/10/13	E2	22
1083	ANTOFAGASTA	LIMA	10/10/13	E2	51
1084	LIMA	GUAYAQUIL	11/10/13	E2	22
1086	CAYENNE	ATLANTICO	11/10/13	E1	26
1087	CAYENNE	ATLANTICO	11/10/13	E1	26
1088	LIMA	GUAYAQUIL	11/10/13	E2	22
1090	CENTRAL AMERICA	GUAYAQUIL	13/10/13	E2	22
1091	CURAZAO	ST. DOMINGO	13/10/13	E2	40
1092	BOGOTA	GUAYAQUIL	13/10/13	E1	25
1094	PORT AU PRINCE	ST. DOMINGO	14/10/13	E1	41
1097	PORT AU PRINCE	ST. DOMINGO	14/10/13	E1	35
1098	CURAZAO	ST. DOMINGO	15/10/13	E1	26
1100	ANTOFAGASTA	LIMA	16/10/13	E1	39
1102	CURAZAO	ST. DOMINGO	16/10/13	E1	30
1104	CAYENNE	AMAZONICA	17/10/13	E1	31
1105	PORT AU PRINCE	ST. DOMINGO	17/10/13	E1	31
1106	BOGOTA	GUAYAQUIL	18/10/13	E2	39

LHD Sequence	FIR suffering the risk	FIR generating the risk	Date of the event	GTE Code	Risk Value
1109	MONTEVIDEO	EZEIZA	18/10/13	E2	27
1115	PORT AU PRINCE	ST. DOMINGO	21/10/13	E1	30
1118	CENTRAL AMERICA	GUAYAQUIL	22/10/13	E2	34
1119	ANTOFAGASTA	LIMA	22/10/13	E1	25
1120	MONTEVIDEO	EZEIZA	22/10/13	E2	39
1121	ATLANTICO	MONTEVIDEO	22/10/13	E2	22
1122	BOGOTA	GUAYAQUIL	23/10/13	E2	25
1123	BOGOTA	GUAYAQUIL	23/10/13	E1	35
1124	BOGOTA	GUAYAQUIL	23/10/13	E1	35
1126	BOGOTA	GUAYAQUIL	23/10/13	E1	31
1127	LIMA	GUAYAQUIL	24/10/13	E2	55
1129	MONTEVIDEO	EZEIZA	25/10/13	E2	27
1130	ATLANTICO	MONTEVIDEO	25/10/13	E2	22
1132	PORT AU PRINCE	ST. DOMINGO	26/10/13	E2	39
1133	CURAZAO	ST. DOMINGO	26/10/13	E2	40
1134	CURAZAO	ST. DOMINGO	26/10/13	E2	40
1135	MONTEVIDEO	EZEIZA	26/10/13	E2	39
1136	ATLANTICO	MONTEVIDEO	26/10/13	E2	39
1138	ANTOFAGASTA	CORDOBA	26/10/13	E1	23
1139	BOGOTA	GUAYAQUIL	26/10/13	E2	25
1140	PORT AU PRINCE	ST. DOMINGO	26/10/13	E2	51
1141	PORT AU PRINCE	ST. DOMINGO	27/10/13	E1	31
1142	LIMA	GUAYAQUIL	28/10/13	E2	22
1143	BOGOTA	GUAYAQUIL	28/10/13	E1	31
1144	BOGOTA	AMAZONICA	28/10/13	E2	22
1148	PORT AU PRINCE	ST. DOMINGO	29/10/13	E1	35
1149	CURAZAO	ST. DOMINGO	30/10/13	E1	30
1150	GEORGETOWN	PARAMARIBO	31/10/13	E1	31
1151	BOGOTA	GUAYAQUIL	31/10/13	E1	31
1153	CURAZAO	ST. DOMINGO	31/10/13	E1	30
1154	PORT AU PRINCE	ST. DOMINGO	31/10/13	E1	35
1155	BOGOTA	GUAYAQUIL	01/11/13	E1	35
1156	HABANA	KINGSTON	01/11/13	E2	22
1157	HABANA	KINGSTON	01/11/13	E2	22
1158	BOGOTA	PANAMA	01/11/13	E1	31
1159	PORT AU PRINCE	ST. DOMINGO	01/11/13	E1	35

LHD Sequence	FIR suffering the risk	FIR generating the risk	Date of the event	GTE Code	Risk Value
1161	LIMA	BOGOTA	03/11/13	E2	22
1162	CURAZAO	ST. DOMINGO	03/11/13	E1	30
1163	PORT AU PRINCE	ST. DOMINGO	03/11/13	E1	35
1164	BOGOTA	GUAYAQUIL	04/11/13	E2	45
1166	ATLANTICO	MONTEVIDEO	04/11/13	E2	22
1167	GUAYAQUIL	BOGOTA	04/11/13	E1	25
1168	GUAYAQUIL	BOGOTA	05/11/13	E1	23
1169	PORT AU PRINCE	ST. DOMINGO	05/11/13	E2	45
1170	CAYENNE	ATLANTICO	06/11/13	E2	51
1171	BOGOTA	PANAMA	06/11/13	E2	22
1173	BOGOTA	CENTRAL AMERICA	07/11/13	E2	39
1174	BOGOTA	GUAYAQUIL	07/11/13	E1	31
1177	GUAYAQUIL	BOGOTA	08/11/13	E2	30
1178	PORT AU PRINCE	ST. DOMINGO	09/11/13	E1	31
1179	PORT AU PRINCE	ST. DOMINGO	09/11/13	E1	35
1180	PORT AU PRINCE	KINGSTON	09/11/13	E1	31
1183	CURITIBA	ATLANTICO	11/11/13	E2	22
1184	COMODORO RIVADAVIA	EZEIZA	11/11/13	E2	34
1185	CURAZAO	ST. DOMINGO	11/11/13	E2	40
1186	BOGOTA	GUAYAQUIL	11/11/13	E2	39
1188	RESISTENCIA	EZEIZA	12/11/13	E1	26
1189	RESISTENCIA	CORDOBA	12/11/13	E1	26
1192	PANAMA	BOGOTA	13/11/13	E1	21
1195	PORT AU PRINCE	PILOTO	14/11/13	B	47
1198	GUAYAQUIL	BOGOTA	15/11/13	E2	30
1200	GUAYAQUIL	LIMA	16/11/13	E1	23
1201	GUAYAQUIL	LIMA	16/11/13	E1	25
1203	CURAZAO	ST. DOMINGO	17/11/13	E1	30
1209	GUAYAQUIL	CENTRAL AMERICA	17/11/13	E2	27
1210	GUAYAQUIL	BOGOTA	17/11/13	E2	30
1213	ATLANTICO	MONTEVIDEO	18/11/13	E2	39
1214	PORT AU PRINCE	ST. DOMINGO	19/11/13	E1	31
1215	LA PAZ	CORDOBA	20/11/13	E1	23
1220	GUAYAQUIL	LIMA	20/11/13	E1	31
1222	LIMA	AMAZONICA	20/11/13	E2	22

LHD Sequence	FIR suffering the risk	FIR generating the risk	Date of the event	GTE Code	Risk Value
1223	GUAYAQUIL	BOGOTA	21/11/13	E1	23
1224	GUAYAQUIL	LIMA	21/11/13	E1	25
1226	GUAYAQUIL	LIMA	21/11/13	E2	27
1227	GUAYAQUIL	LIMA	21/11/13	E2	30
1228	GUAYAQUIL	LIMA	21/11/13	E1	23
1230	ANTOFAGASTA	LIMA	22/11/13	E1	21
1231	GUAYAQUIL	BOGOTA	22/11/13	E2	27
1232	GUAYAQUIL	BOGOTA	22/11/13	E2	30
1233	GUAYAQUIL	BOGOTA	22/11/13	E1	25
1234	BOGOTA	GUAYAQUIL	22/11/13	E2	39
1236	PORT AU PRINCE	ST. DOMINGO	22/11/13	E1	31
1238	GUAYAQUIL	LIMA	23/11/13	E2	27
1240	ATLANTICO	MONTEVIDEO	23/11/13	E2	22
1243	RESISTENCIA	EZEIZA	23/11/13	E1	28
1245	CURAZAO	ST. DOMINGO	24/11/13	E1	30
1246	GUAYAQUIL	CENTRAL AMERICA	24/11/13	E1	23
1247	GUAYAQUIL	CENTRAL AMERICA	24/11/13	E1	23
1248	GUAYAQUIL	CENTRAL AMERICA	24/11/13	E1	23
1249	BARRANQUILLA	KINGSTON	24/11/13	E2	22
1250	GUAYAQUIL	BOGOTA	25/11/13	E1	23
1251	PORT AU PRINCE	ST. DOMINGO	25/11/13	E1	35
1252	GUAYAQUIL	LIMA	26/11/13	E1	23
1253	GUAYAQUIL	LIMA	26/11/13	E1	25
1254	ATLANTICO	MONTEVIDEO	26/11/13	E2	22
1255	CURITIBA	BRASILIA	26/11/13	E2	22
1256	CURITIBA	MONTEVIDEO	26/11/13	E2	22
1261	GUAYAQUIL	CENTRAL AMERICA	27/11/13	E2	27
1263	CURAZAO	ST. DOMINGO	27/11/13	E1	35
1264	ST. DOMINGO	CURAZAO	27/11/13	E2	25
1265	ANTOFAGASTA	LIMA	27/11/13	E2	46
1266	GUAYAQUIL	BOGOTA	27/11/13	E1	25
1268	GUAYAQUIL	CENTRAL AMERICA	27/11/13	E2	27
1270	CURAZAO	BARRANQUILLA	28/11/13	E1	26
1271	CENTRAL AMERICA	BOGOTA	29/11/13	E2	34
1273	LIMA	GUAYAQUIL	30/11/13	E2	25
1275	CURAZAO	MAIQUETIA	30/11/13	E2	34

LHD Sequence	FIR suffering the risk	FIR generating the risk	Date of the event	GTE Code	Risk Value
1278	CENTRAL AMERICA	PANAMA	02/12/13	E1	26
1279	GUAYAQUIL	LIMA	02/12/13	E2	22
1281	LIMA	LA PAZ	02/12/13	E1	31
1283	ANTOFAGASTA	LIMA	03/12/13	E2	25
1286	GUAYAQUIL	BOGOTA	04/12/13	E1	25
1294	LIMA	BOGOTA	04/12/13	E2	39
1295	ASUNCION	LA PAZ	05/12/13	E2	34
1296	CENTRAL AMERICA	BOGOTA	05/12/13	E2	34
1300	KINGSTON	PANAMA	05/12/13	E1	26
1301	GUAYAQUIL	CENTRAL AMERICA	05/12/13	E1	23
1302	GUAYAQUIL	BOGOTA	05/12/13	E1	23
1303	ASUNCION	LA PAZ	06/12/13	E2	34
1305	PORT AU PRINCE	ST. DOMINGO	06/12/13	E1	31
1310	CURAZAO	ST. DOMINGO	06/12/13	E1	26
1311	CURAZAO	ST. DOMINGO	06/12/13	E1	30
1315	LIMA	GUAYAQUIL	07/12/13	E2	25
1318	GUAYAQUIL	BOGOTA	07/12/13	E1	23
1319	GEORGETOWN	PIARCO	08/12/13	E1	31
1322	KINGSTON	CURAZAO	08/12/13	E2	27
1324	ANTOFAGASTA	LIMA	09/12/13	E1	31
1325	PORT AU PRINCE	ST. DOMINGO	09/12/13	E1	31
1326	PORT AU PRINCE	ST. DOMINGO	09/12/13	E2	39
1328	KINGSTON	PANAMA	10/12/13	E1	26
1329	PORT AU PRINCE	ST. DOMINGO	10/12/13	E2	45
1330	PORT AU PRINCE	ST. DOMINGO	10/12/13	E2	39
1331	PORT AU PRINCE	ST. DOMINGO	10/12/13	E1	35
1332	PORT AU PRINCE	ST. DOMINGO	10/12/13	E1	35
1335	LIMA	GUAYAQUIL	11/12/13	E1	31
1339	CURAZAO	ST. DOMINGO	11/12/13	E1	30
1340	CURAZAO	ST. DOMINGO	11/12/13	E1	26
1342	PORT AU PRINCE	ST. DOMINGO	11/12/13	E1	31
1345	ANTOFAGASTA	LIMA	13/12/13	E2	41
1347	GUAYAQUIL	LIMA	13/12/13	E2	22
1349	LIMA	AMAZONICA	13/12/13	E2	22
1355	CURAZAO	ST. DOMINGO	14/12/13	E1	30
1356	CURAZAO	ST. DOMINGO	14/12/13	E1	30

LHD Sequence	FIR suffering the risk	FIR generating the risk	Date of the event	GTE Code	Risk Value
1357	CURAZAO	ST. DOMINGO	14/12/13	E1	30
1358	PIARCO	PARAMARIBO	14/12/13	E2	39
1359	CURAZAO	BARRANQUILLA	14/12/13	E1	26
1361	CURAZAO	ST. DOMINGO	15/12/13	E1	30
1367	ANTOFAGASTA	LIMA	16/12/13	E1	34
1371	BOGOTA	GUAYAQUIL	17/12/13	E1	31
1375	CURAZAO	ST. DOMINGO	17/12/13	E1	30
1386	CAYENNE	AMAZONICA	19/12/13	E2	22
1388	PORT AU PRINCE	ST. DOMINGO	19/12/13	E1	35
1389	GUAYAQUIL	BOGOTA	19/12/13	E1	25
1390	HABANA	CENTRAL AMERICA	19/12/13	E2	22
1394	COMODORO RIVADAVIA	MOUNT PLEASANT	20/12/13	E2	22
1396	ANTOFAGASTA	LIMA	20/12/13	E1	34
1397	GUAYAQUIL	BOGOTA	20/12/13	D	30
1398	PORT AU PRINCE	ST. DOMINGO	20/12/13	E1	35
1403	COMODORO RIVADAVIA	MOUNT PLEASANT	21/12/13	E2	34
1404	CURAZAO	MAIQUETIA	21/12/13	E2	34
1405	RESISTENCIA	EZEIZA	22/12/13	E1	26
1412	LA PAZ	LIMA	23/12/13	E1	31
1413	MONTEVIDEO	EZEIZA	23/12/13	E2	39
1414	ATLANTICO	MONTEVIDEO	23/12/13	E2	22
1417	CURAZAO	MAIQUETIA	24/12/13	E1	26
1421	LA PAZ	CORDOBA	25/12/13	E1	23
1424	PORT AU PRINCE	ST. DOMINGO	25/12/13	E1	35
1425	ST. DOMINGO	PORT AU PRINCE	26/12/13	E2	25
1427	BOGOTA	GUAYAQUIL	27/12/13	E2	39
1428	CURAZAO	BARRANQUILLA	27/12/13	E1	26
1429	BOGOTA	PANAMA	27/12/13	E2	22
1430	ST. DOMINGO	PORT AU PRINCE	28/12/13	E2	40
1431	ST. DOMINGO	PORT AU PRINCE	28/12/13	E2	22
1432	ST. DOMINGO	PORT AU PRINCE	28/12/13	E2	22
1433	GUAYAQUIL	LIMA	28/12/13	E1	23
1436	ST. DOMINGO	CURAZAO	28/12/13	E2	25
1437	GUAYAQUIL	BOGOTA	28/12/13	E1	25
1439	CURAZAO	ST. DOMINGO	29/12/13	E1	30

LHD Sequence	FIR suffering the risk	FIR generating the risk	Date of the event	GTE Code	Risk Value
1441	BOGOTA	GUAYAQUIL	29/12/13	E1	31
1443	ST. DOMINGO	PORT AU PRINCE	29/12/13	E2	22
1444	GUAYAQUIL	LIMA	29/12/13	E2	27
1450	BOGOTA	PANAMA	30/12/13	E2	22
1451	BOGOTA	PANAMA	30/12/13	E2	22
1452	GUAYAQUIL	BOGOTA	30/12/13	E1	25
1453	ST. DOMINGO	PORT AU PRINCE	30/12/13	E2	22
1454	KINGSTON	CURAZAO	30/12/13	E1	26
1459	CURAZAO	BARRANQUILLA	31/12/13	E1	26
1460	BOGOTA	PANAMA	31/12/13	E2	22
1463	BOGOTA	MAIQUETIA	31/12/13	E2	22