



INTERNATIONAL CIVIL AVIATION ORGANIZATION

A United Nations Specialized Agency

Proposal for the amendment of Annex 14, Volume I and proposed *Procedures for Air Navigation Services — Aerodromes (PANS — Aerodromes)*

Jaime Calderon

Aerodromes and Ground Aids Regional Officer

ICAO NACC REGIONAL OFFICE

Main features of the proposed amendments

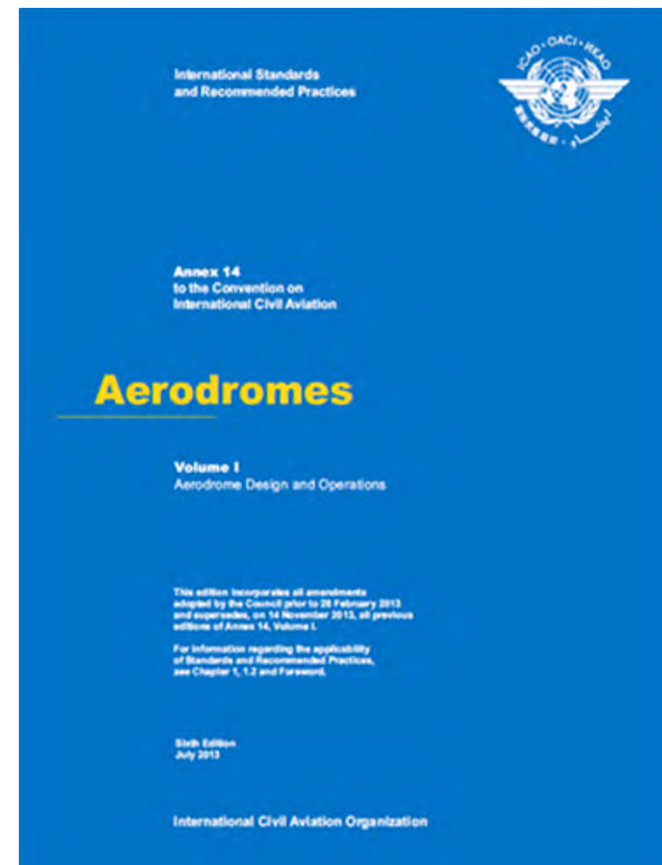


- ✿ The main features of the proposed amendments are the following:
- a) introductory information on PANS-Aerodromes and references to it in Annex 14, Volume I;
 - b) procedures on the stages for certifying an aerodrome, contents of an aerodrome manual, critical conditions of aerodrome certificate, management of change;
 - c) the use of aerodromes undertaking an assessment of its compatibility for the type of traffic or operation the aerodrome is intending to operate; and
 - d) the draft first edition of PANS-Aerodromes.

ANNEX 14, Vol. I Sixth Edition



- ✓ Annex 14, Volume I contains SARPS that prescribe:
 - physical characteristics
 - obstacle limitation surfaces,
 - certain facilities and technical services normally provided at an aerodrome.
- ✓ It is mainly used as a design document and does not sufficiently address aerodrome operational management which is equally important for aerodrome safety and efficiency.



Certification of Aerodromes

- ✈️ High level requirements for the CA
- ✈️ However does not address operational procedures dealing with existing aerodromes
- ✈️ Many existing aerodromes worldwide were not built to the full design standards specified in Annex 14, Volume I
- ✈️ In certain cases, it is impossible or impracticable for those aerodromes to render their infrastructure to be in accordance with the Annex design Standards



Need to develop PANS-AGA

- ✈️ There is therefore a need to develop an ICAO document that addresses procedures for aerodrome operational management as many challenges that aerodromes face today are of an operational nature
- ✈️ Particularly where larger aircraft need to be accommodated and/or the development of the aerodrome is constrained.

Draft PANS – AGA document



- ✈️ The first edition of the PANS-Aerodromes has been developed
 - ✈️ to provide procedures to address the many operational challenges that aerodrome operators face today,
 - ✈️ particularly where large airplanes need to be accommodated at aerodromes where physical development is constrained.
- ✈️ The proposed amendment to Annex 14, Volume I permits the use of PANS-Aerodromes in addressing issues faced by existing aerodromes



Draft PANS – AGA document

- ✈️ The PANS-Aerodromes are complementary to the SARPs contained in Annex 14, Volume I.
- ✈️ The PANS-Aerodromes specify, in greater detail than the SARPs, operational procedures to be applied by aerodrome operators to ensure aerodrome operational safety
- ✈️ PANS-Aerodromes specify procedures to be applied by both aerodrome regulators and operators for initial aerodrome certification and continuing aerodrome safety oversight

Draft PANS – AGA document



- ✈️ The first edition of PANS-Aerodromes includes material on how to certificate an aerodrome,
- ✈️ how to undertake a safety assessment as part of a safety management system and
- ✈️ how to conduct an aerodrome compatibility study to assess any proposed change to the operation of the aerodrome.

Draft PANS – AGA document



- ✈️ The PANS-Aerodromes focus on the priority areas identified by the ICAO Universal Safety Oversight Audit Programme in the domains of certification of aerodromes, safety assessment and operational procedures at existing aerodromes (aerodrome compatibility)
- ✈️ The PANS do not have the same status as SARPs.
- ✈️ The implementation of procedures is the responsibility of Member States

Contents of the PANS-AGA



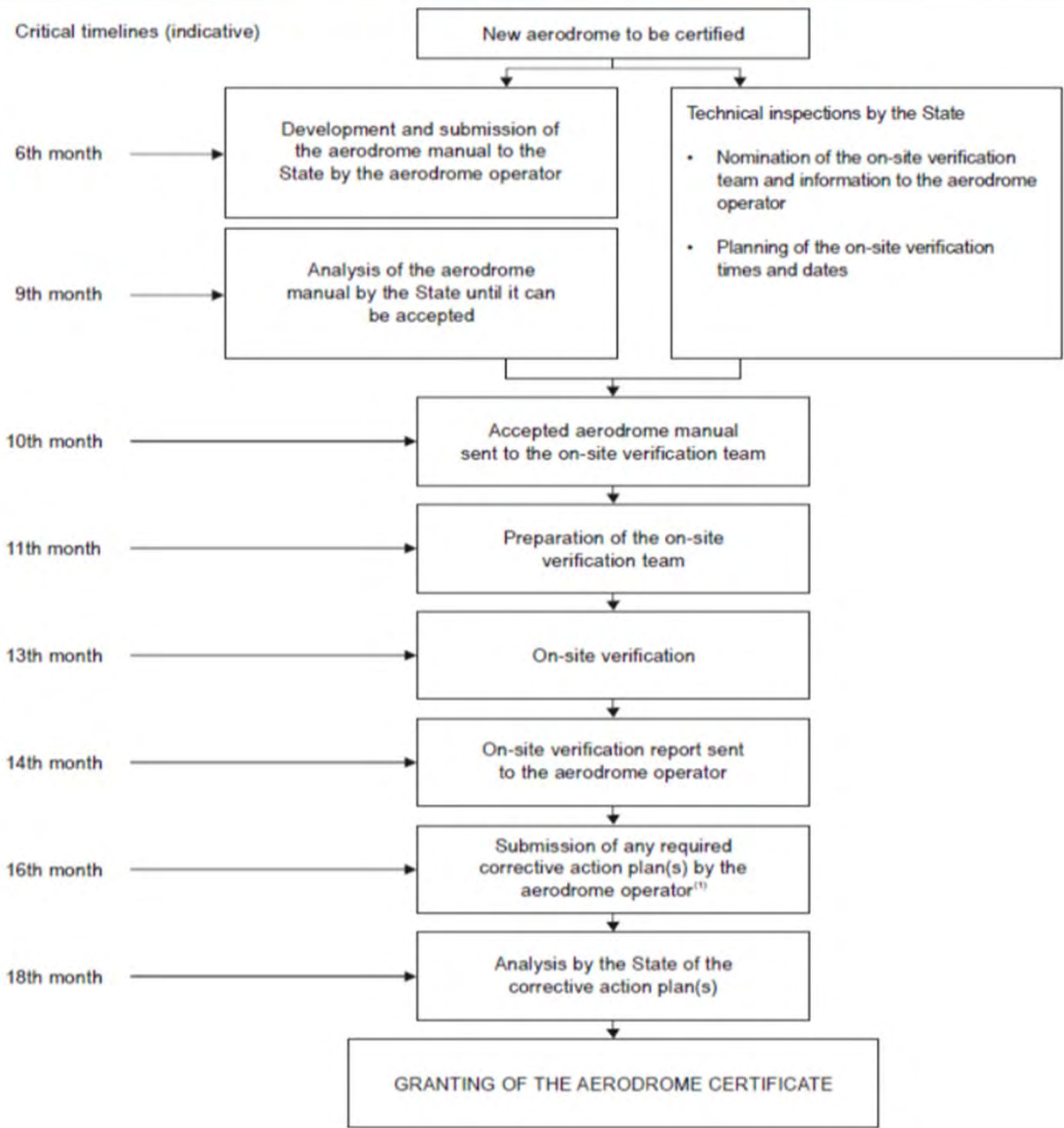
Chapter 1 — Definitions

Contains a list of terms and their technical meanings as used in this document.

Chapter 2 — Certification of aerodromes

Outlines the general principles and procedures to be followed through all of the suggested stages of certifying an aerodrome operator:

- the initial meeting between the State and the aerodrome operator,
- technical inspections of the aerodrome,
- approval/acceptance of all or relevant portions of the aerodrome manual,
- on-site verification of aerodrome operational aspects including the SMS of the operator,
- analysis of the deviations from regulatory requirements and issuance of the verification report,
- assessment of the corrective action plan, issuance of the certificate and continued safety oversight.



Contents of the PANS-AGA

Chapter 3 — Safety assessments



- ✈️ Outlines the methodologies and procedures to be followed when undertaking a safety assessment.
- ✈️ It includes a brief description of how a safety assessment fulfills an element of the overall SMS.
- ✈️ An SMS should be employed by the aerodrome operator to ensure that it is able to control the safety risks it is exposed to as a consequence of the hazards it must face during the operations of the aerodrome.

Contents of the PANS-AGA

Chapter 4 — Aerodrome compatibility



- ✈️ Outlines a methodology and procedures to assess the compatibility between airplane operations and aerodrome infrastructure and operations when an aerodrome accommodates an airplane that exceeds the certificated characteristics of the aerodrome.

Contents of the PANS-AGA

Chapter 4 - Aerodrome compatibility



- ✈️ Addresses situations where compliance with the design provisions stipulated in Annex 14, Volume I, is either impractical or physically impossible.
- ✈️ Where alternative measures, operational procedures and operating restrictions have been developed, these should be reviewed periodically to assess their continued validity.

Compatibility Study


- ✈️ A compatibility study should be performed collaboratively between affected stakeholders which includes:
- ✈️ the aerodrome operator,
 - ✈️ the airplane operator,
 - ✈️ ground handling agencies
 - ✈️ the various air navigation service providers (ANSPs)

Compatibility Study




- ✈️ The following steps describe the arrangement between the Airline and Aerodrome operator for the introduction of an airplane type/subtype new to the aerodrome:
- a) the Airline submits a request to the Aerodrome operator to operate an airplane type/subtype new to the aerodrome;
 - b) the aerodrome operator identifies possible means of accommodating the airplane type/subtype including access to movement areas and, considers the feasibility and economic viability of upgrading the aerodrome infrastructure; and
 - c) the Aerodrome operator and Airline discuss the Aerodrome operator's assessment, and whether operations of the airplane type/subtype can be accommodated and, if permitted, under what conditions.

Compatibility Study (Cont.)

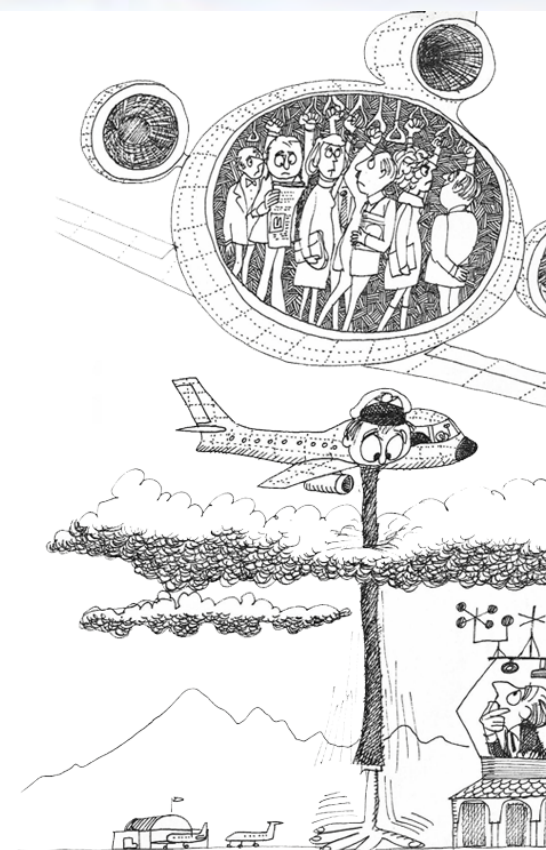
-  The following procedures should be included in the aerodrome compatibility study:
- a) identify the airplane's physical characteristics and operational requirements;
 - b) identify the applicable regulatory requirements;
 - c) establish the adequacy of the aerodrome infrastructure and facilities vis-à-vis the requirements of the new airplane;
 - d) identify the changes required to the aerodrome;
 - e) document the compatibility study; and
 - f) perform the required safety assessments identified during the compatibility study

Chapter 5. Aerodrome operational management (to be developed)



 Chapter 5 will outline the general principles and procedures to be followed in providing uniform and harmonized aerodrome operations.

**Without international rules
air travel would be in chaos.**





North American
Central American
and Caribbean
(NACC) Office
Mexico City

South American
(SAM) Office
Lima

**ICAO
Headquarters
Montreal**

Western and
Central African
(WACAF) Office
Dakar

European and
North Atlantic
(EUR/NAT) Office
Paris

Middle East
(MID) Office
Cairo

Eastern and
Southern African
(ESAF) Office
Nairobi

Asia and Pacific
(APAC) Office
Bangkok

Thank You

www.icao.int/nacc