

Jeffrey Richards, Air Traffic Controller  
Representative to ICAO RPAS Panel





Segregation



Accommodation



Integration

# FAA UAS Integration Strategy



# sUAS

## Small Unmanned Aircraft Systems

- Under 55lbs
- Limited to under 400/500'
- Line of Sight
- See and Avoid
- Daylight Operations





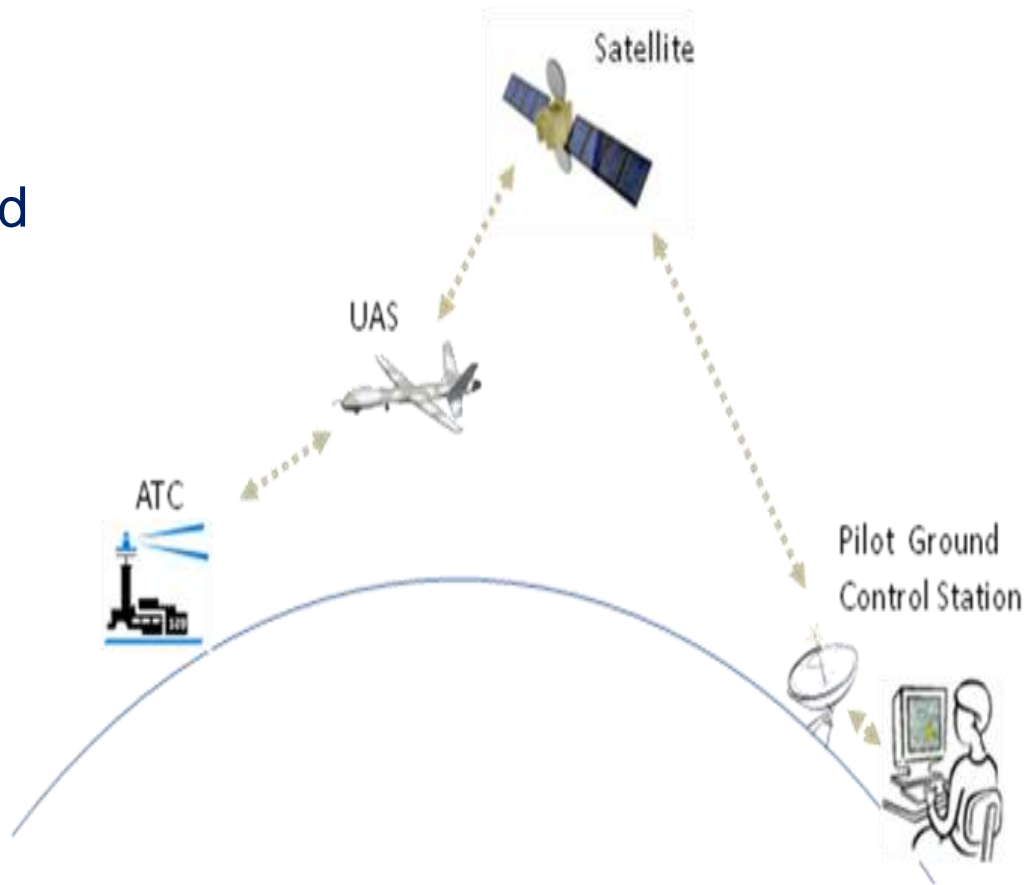
# Lost Link

Severed or lost Command and Control link

Controller needs to look up procedure

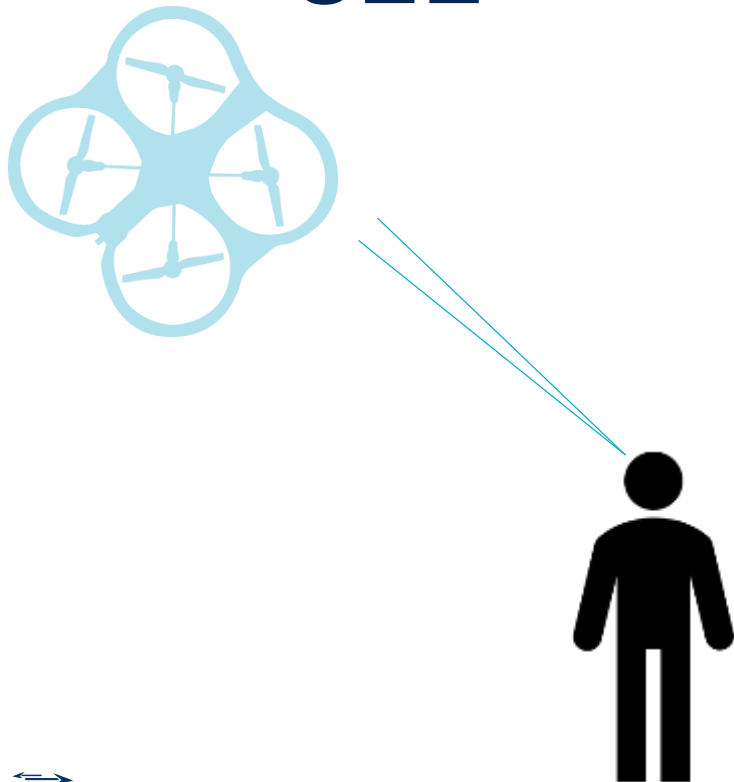
Programmed flight plan may need to be changed

If link is re-established...then what?





# SEE

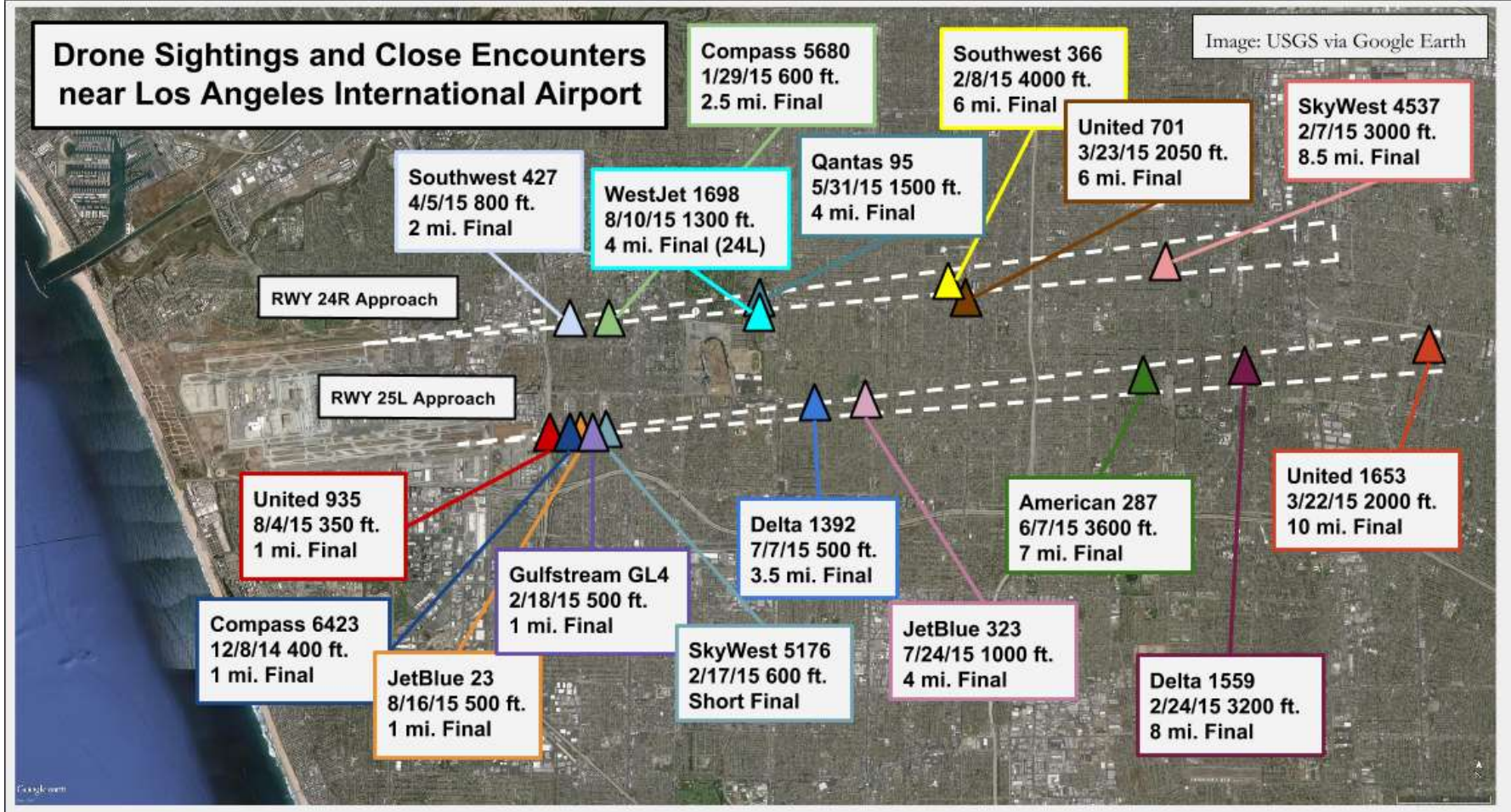


# AVOID





# Drone Sightings and Close Encounters near Los Angeles International Airport



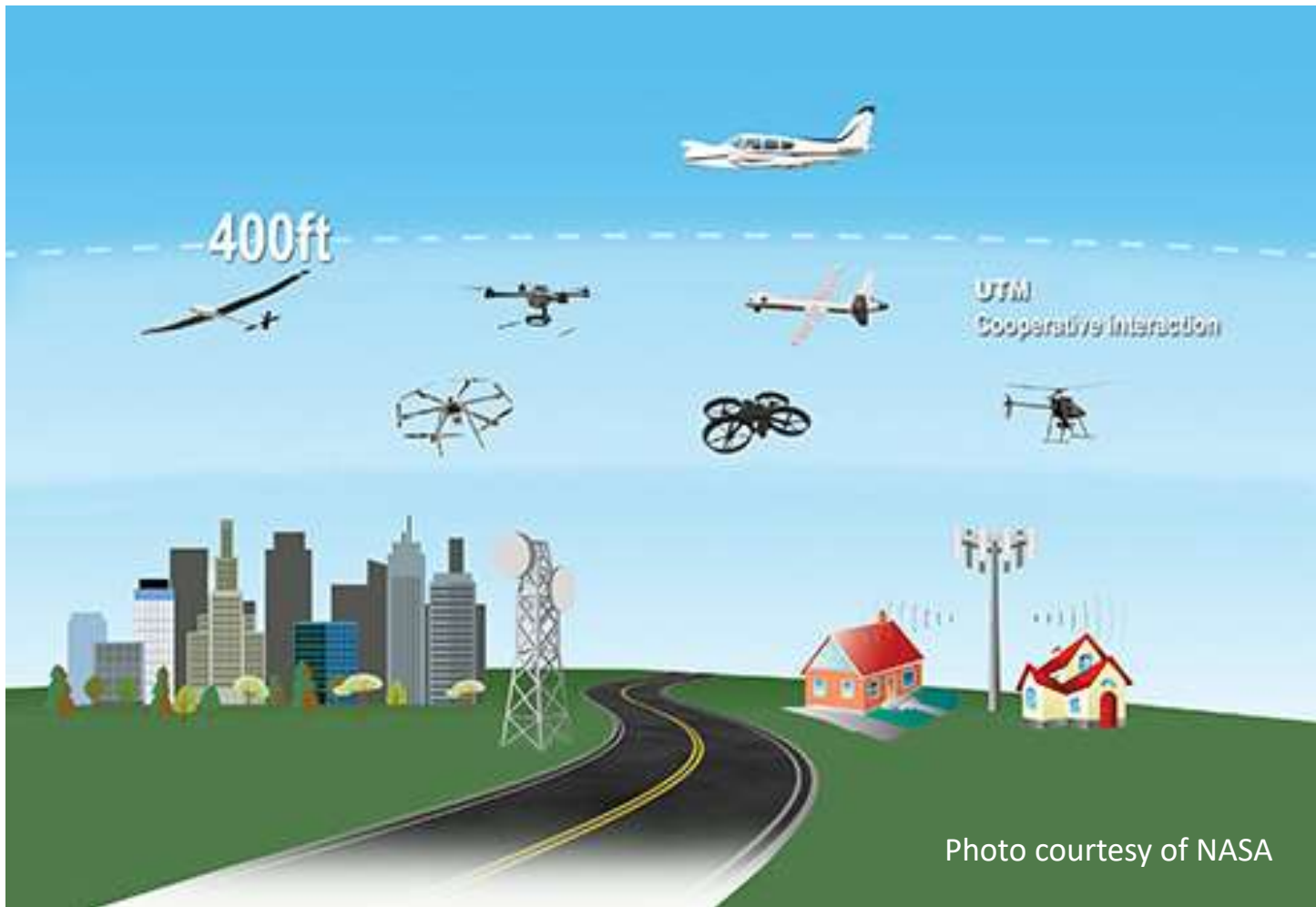
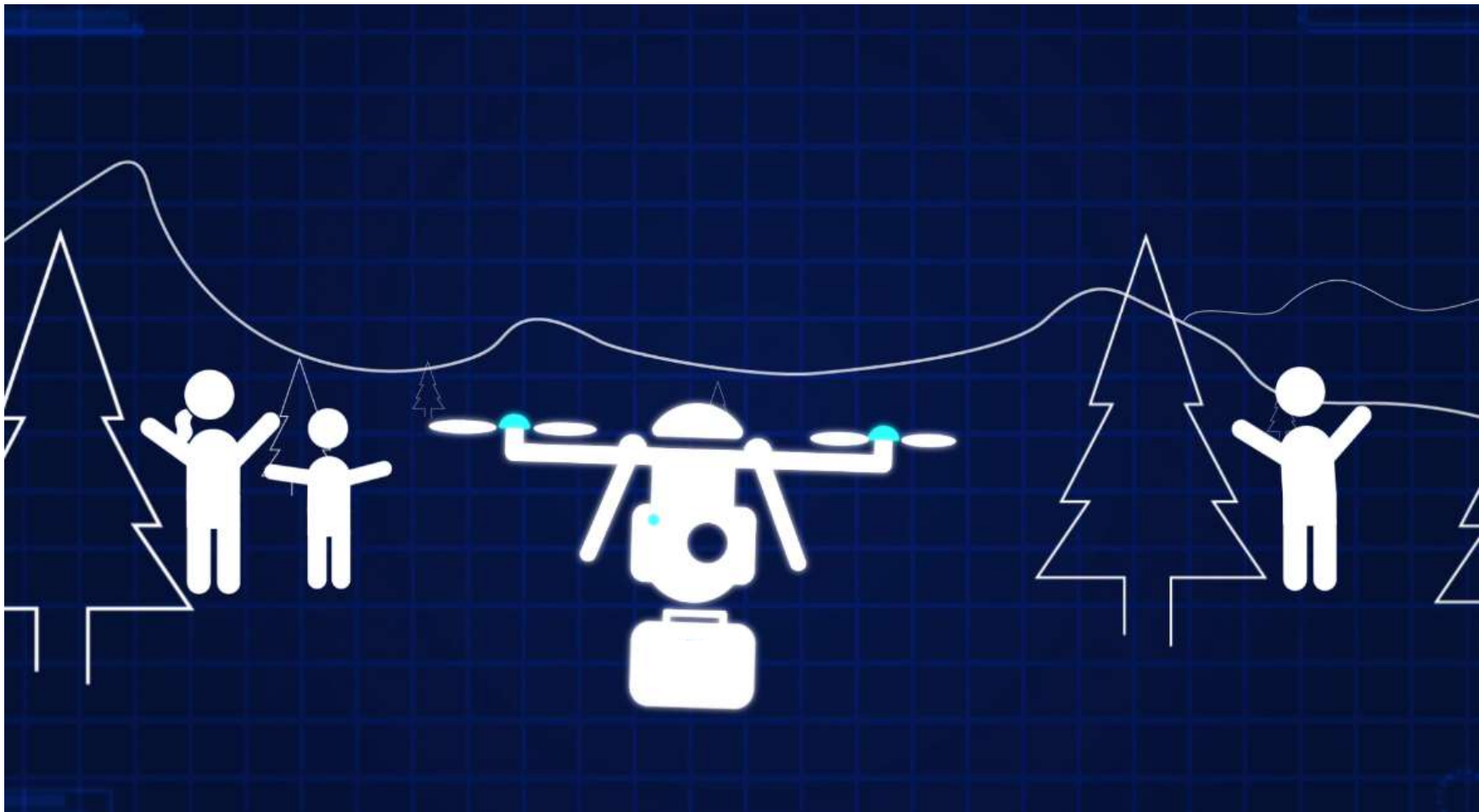
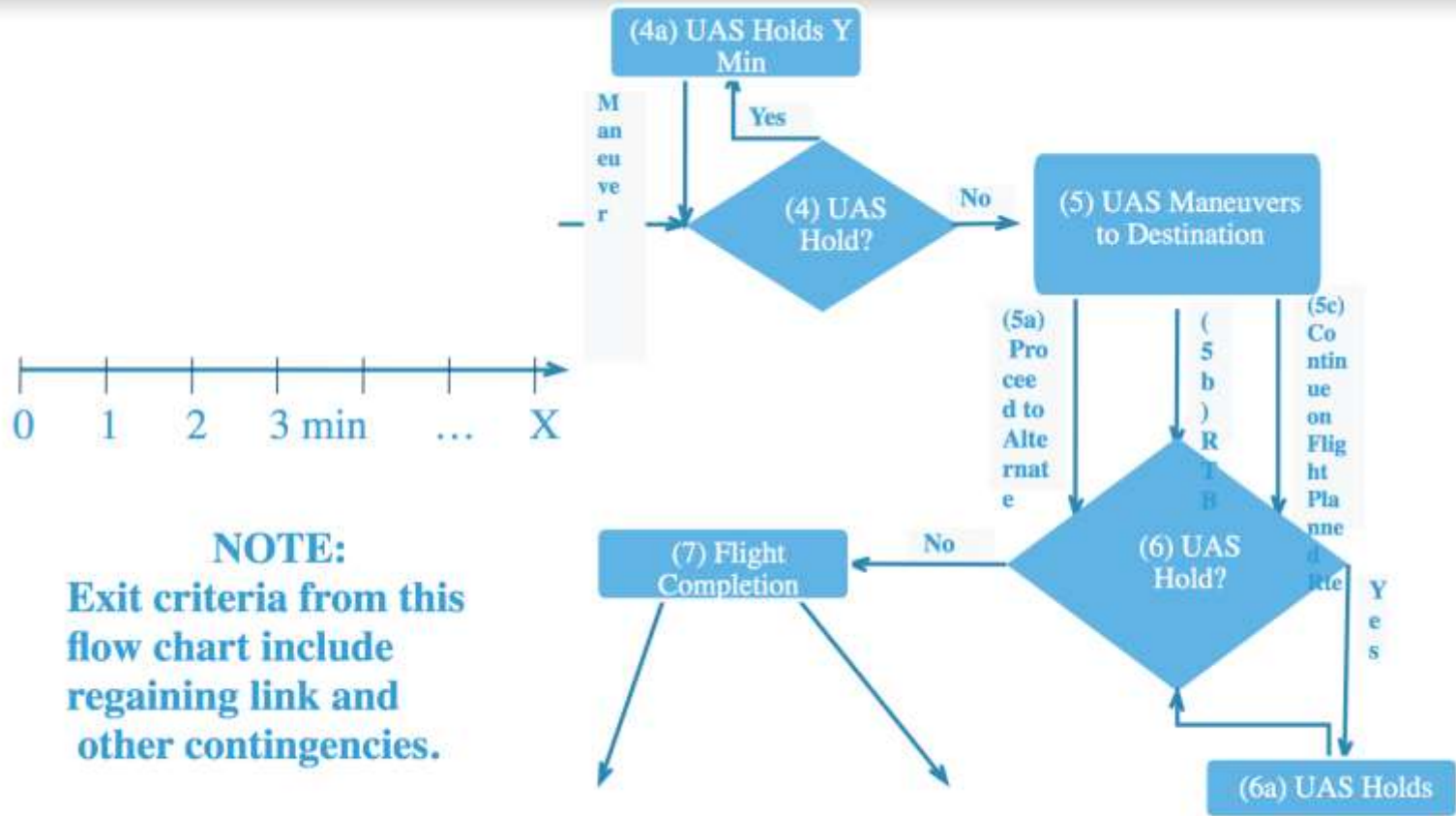


Photo courtesy of NASA





**NOTE:**  
Exit criteria from this flow chart include regaining link and other contingencies.

Jeffrey Richards, Air Traffic Controller  
Representative to ICAO RPAS Panel

