

ICAO AIR CARGO DEVELOPMENT FORUM

3 SEPTEMBER 2014

ZHENGZHOU, CHINA

ANGELA GITTENS

DIRECTOR GENERAL

ACI WORLD



EVOLUTION OF WORLDWIDE FREIGHT TRAFFIC GROWTH (2003–2013)



JUNE 2014 FREIGHT STATISTICS

STATS REGIONS	MONTH	% YOY	YTD JUN 2014	% YOY	YE JUN 2014	% YOY
INTERNATIONAL FREIGHT						
AFR	66.0	(0.4)	390.1	(1.7)	787.0	(3.4)
ASP	1 769.9	4.9	10 295.2	5.3	20 776.6	3.5
EUR	1 194.6	1.3	7 092.1	4.6	14 241.3	3.6
LAC	154.3	(1.1)	946.7	0.8	1 937.7	(1.5)
MEA	421.5	(3.9)	2 547.0	2.5	5 148.1	4.1
NAM	661.7	4.9	3 801.0	5.1	7 616.1	3.3
ACI	4 268.0	2.6	25 072.2	4.5	50506.9	3.2
DOMESTIC FREIGHT						
AFR	3.0	9.2	15.7	(18.9)	36.7	(7.6)
ASP	561.3	3.3	3 421.4	4.2	7 105.1	3.9
EUR	59.2	4.1	343.5	5.7	701.9	3.8
LAC	66.2	(4.7)	422.9	(0.3)	913.7	0.3
MEA	.1	(16.3)	.7	(10.9)	1.3	(9.3)
NAM	985.6	(0.4)	6 038.7	0.5	12 246.6	0.5
ACI	1 675.3	0.8	10 242.8	1.8	21 005.2	1.7
TOTAL FREIGHT						
AFR	73.9	0.2	437.6	(2.1)	883.0	(3.2)
ASP	2 331.1	4.5	13 716.6	5.0	27 881.9	3.6
EUR	1 278.3	1.6	7 569.8	4.5	15 261.8	3.5
LAC	220.5	(2.2)	1 369.6	0.4	2 851.4	(0.9)
MEA	421.6	(3.9)	2 547.7	2.5	5 149.4	4.1
NAM	1 683.1	1.9	10 038.2	2.3	20 323.7	1.6
ACI	6 008.6	2.2	35 679.6	3.7	72 351.2	2.8



JUNE 2014 FREIGHT STATISTICS

STATS REGIONS	MONTH	% YOY	YTD JUN 2014	% YOY	YE JUN 2014	% YOY
INTERNATIONAL FREIGHT						
AFR	66.0	(0.4)	390.1	(1.7)	787.0	(3.4)
ASP	1 769.9	4.9	10 295.2	5.3	20 776.6	3.5
EUR	1 194.6	1.3	7 092.1	4.6	14 241.3	3.6
LAC	154.3	(1.1)	946.7	0.8	1 937.7	(1.5)
MEA	421.5	(3.9)	2 547.0	2.5	5 148.1	4.1
NAM	661.7	4.9	3 801.0	5.1	7 616.1	3.3
ACI	4 268.0	2.6	25 072.2	4.5	50506.9	3.2
DOMESTIC FREIGHT						
AFR	3.0	9.2	15.7	(18.9)	36.7	(7.6)
ASP	561.3	3.3	3 421.4	4.2	7 105.1	3.9
EUR	59.2	4.1	343.5	5.7	701.9	3.8
LAC	66.2	(4.7)	422.9	(0.3)	913.7	0.3
MEA	.1	(16.3)	.7	(10.9)	1.3	(9.3)
NAM	985.6	(0.4)	6 038.7	0.5	12 246.6	0.5
ACI	1 675.3	0.8	10 242.8	1.8	21 005.2	1.7
TOTAL FREIGHT						
AFR	73.9	0.2	437.6	(2.1)	883.0	(3.2)
ASP	2 331.1	4.5	13 716.6	5.0	27 881.9	3.6
EUR	1 278.3	1.6	7 569.8	4.5	15 261.8	3.5
LAC	220.5	(2.2)	1 369.6	0.4	2 851.4	(0.9)
MEA	421.6	(3.9)	2 547.7	2.5	5 149.4	4.1
NAM	1 683.1	1.9	10 038.2	2.3	20 323.7	1.6
ACI	6 008.6	2.2	35 679.6	3.7	72 351.2	2.8



JUNE 2014 FREIGHT STATISTICS

STATS REGIONS	MONTH	% YOY	YTD JUN 2014	% YOY	YE JUN 2014	% YOY
INTERNATIONAL FREIGHT						
AFR	66.0	(0.4)	390.1	(1.7)	787.0	(3.4)
ASP	1 769.9	4.9	10 295.2	5.3	20 776.6	3.5
EUR	1 194.6	1.3	7 092.1	4.6	14 241.3	3.6
LAC	154.3	(1.1)	946.7	0.8	1 937.7	(1.5)
MEA	421.5	(3.9)	2 547.0	2.5	5 148.1	4.1
NAM	661.7	4.9	3 801.0	5.1	7 616.1	3.3
ACI	4 268.0	2.6	25 072.2	4.5	50506.9	3.2
DOMESTIC FREIGHT						
AFR	3.0	9.2	15.7	(18.9)	36.7	(7.6)
ASP	561.3	3.3	3 421.4	4.2	7 105.1	3.9
EUR	59.2	4.1	343.5	5.7	701.9	3.8
LAC	66.2	(4.7)	422.9	(0.3)	913.7	0.3
MEA	.1	(16.3)	.7	(10.9)	1.3	(9.3)
NAM	985.6	(0.4)	6 038.7	0.5	12 246.6	0.5
ACI	1 675.3	0.8	10 242.8	1.8	21 005.2	1.7
TOTAL FREIGHT						
AFR	73.9	0.2	437.6	(2.1)	883.0	(3.2)
ASP	2 331.1	4.5	13 716.6	5.0	27 881.9	3.6
EUR	1 278.3	1.6	7 569.8	4.5	15 261.8	3.5
LAC	220.5	(2.2)	1 369.6	0.4	2 851.4	(0.9)
MEA	421.6	(3.9)	2 547.7	2.5	5 149.4	4.1
NAM	1 683.1	1.9	10 038.2	2.3	20 323.7	1.6
ACI	6 008.6	2.2	35 679.6	3.7	72 351.2	2.8



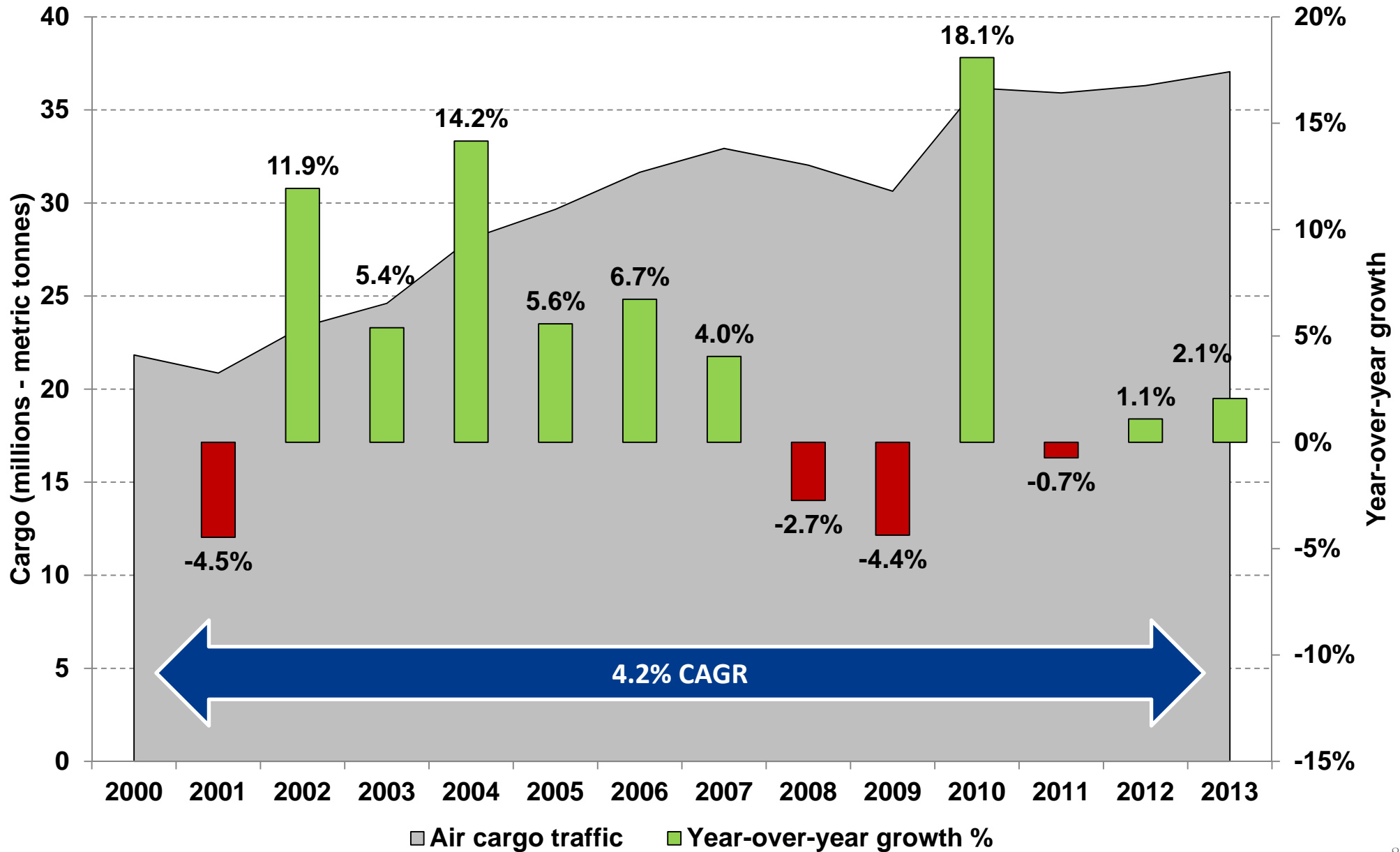
JUNE 2014 FREIGHT STATISTICS

STATS REGIONS	MONTH	% YOY	YTD JUN 2014	% YOY	YE JUN 2014	% YOY
INTERNATIONAL FREIGHT						
AFR	66.0	(0.4)	390.1	(1.7)	787.0	(3.4)
ASP	1 769.9	4.9	10 295.2	5.3	20 776.6	3.5
EUR	1 194.6	1.3	7 092.1	4.6	14 241.3	3.6
LAC	154.3	(1.1)	946.7	0.8	1 937.7	(1.5)
MEA	421.5	(3.9)	2 547.0	2.5	5 148.1	4.1
NAM	661.7	4.9	3 801.0	5.1	7 616.1	3.3
ACI	4 268.0	2.6	25 072.2	4.5	50506.9	3.2
DOMESTIC FREIGHT						
AFR	3.0	9.2	15.7	(18.9)	36.7	(7.6)
ASP	561.3	3.3	3 421.4	4.2	7 105.1	3.9
EUR	59.2	4.1	343.5	5.7	701.9	3.8
LAC	66.2	(4.7)	422.9	(0.3)	913.7	0.3
MEA	.1	(16.3)	.7	(10.9)	1.3	(9.3)
NAM	985.6	(0.4)	6 038.7	0.5	12 246.6	0.5
ACI	1 675.3	0.8	10 242.8	1.8	21 005.2	1.7
TOTAL FREIGHT						
AFR	73.9	0.2	437.6	(2.1)	883.0	(3.2)
ASP	2 331.1	4.5	13 716.6	5.0	27 881.9	3.6
EUR	1 278.3	1.6	7 569.8	4.5	15 261.8	3.5
LAC	220.5	(2.2)	1 369.6	0.4	2 851.4	(0.9)
MEA	421.6	(3.9)	2 547.7	2.5	5 149.4	4.1
NAM	1 683.1	1.9	10 038.2	2.3	20 323.7	1.6
ACI	6 008.6	2.2	35 679.6	3.7	72 351.2	2.8

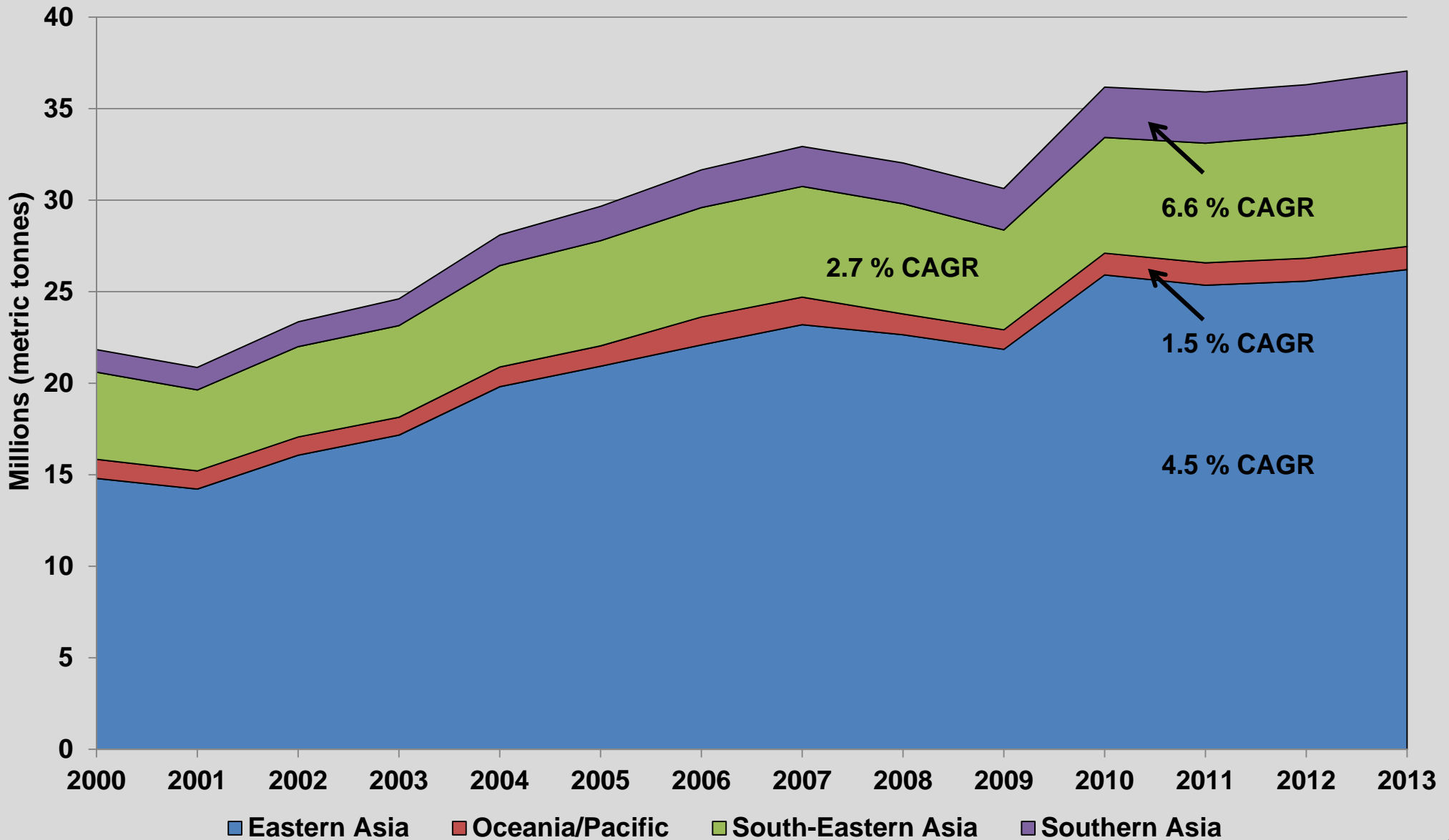
JUNE 2014 FREIGHT STATISTICS

STATS REGIONS	MONTH	% YOY	YTD JUN 2014	% YOY	YE JUN 2014	% YOY
INTERNATIONAL FREIGHT						
AFR	66.0	(0.4)	390.1	(1.7)	787.0	(3.4)
ASP	1 769.9	4.9	10 295.2	5.3	20 776.6	3.5
EUR	1 194.6	1.3	7 092.1	4.6	14 241.3	3.6
LAC	154.3	(1.1)	946.7	0.8	1 937.7	(1.5)
MEA	421.5	(3.9)	2 547.0	2.5	5 148.1	4.1
NAM	661.7	4.9	3 801.0	5.1	7 616.1	3.3
ACI	4 268.0	2.6	25 072.2	4.5	50506.9	3.2
DOMESTIC FREIGHT						
AFR	3.0	9.2	15.7	(18.9)	36.7	(7.6)
ASP	561.3	3.3	3 421.4	4.2	7 105.1	3.9
EUR	59.2	4.1	343.5	5.7	701.9	3.8
LAC	66.2	(4.7)	422.9	(0.3)	913.7	0.3
MEA	.1	(16.3)	.7	(10.9)	1.3	(9.3)
NAM	985.6	(0.4)	6 038.7	0.5	12 246.6	0.5
ACI	1 675.3	0.8	10 242.8	1.8	21 005.2	1.7
TOTAL FREIGHT						
AFR	73.9	0.2	437.6	(2.1)	883.0	(3.2)
ASP	2 331.1	4.5	13 716.6	5.0	27 881.9	3.6
EUR	1 278.3	1.6	7 569.8	4.5	15 261.8	3.5
LAC	220.5	(2.2)	1 369.6	0.4	2 851.4	(0.9)
MEA	421.6	(3.9)	2 547.7	2.5	5 149.4	4.1
NAM	1 683.1	1.9	10 038.2	2.3	20 323.7	1.6
ACI	6 008.6	2.2	35 679.6	3.7	72 351.2	2.8

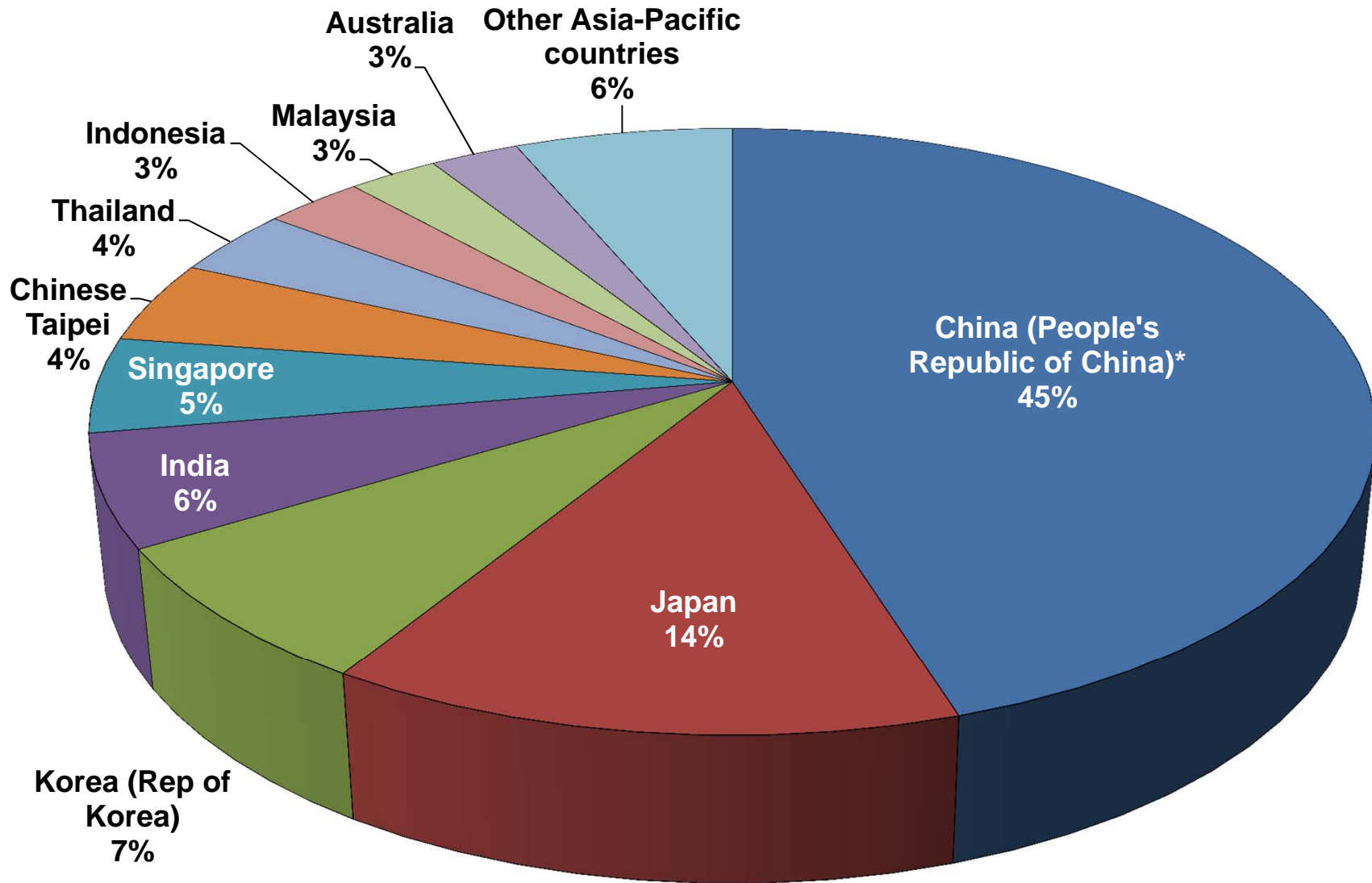
EVOLUTION OF CARGO TRAFFIC IN ASIA



EVOLUTION OF CARGO TRAFFIC IN ASIA - REGIONAL BREAKDOWN



SHARE OF ASIA-PACIFIC AIR CARGO TRAFFIC - TOP 10 MAJOR COUNTRIES

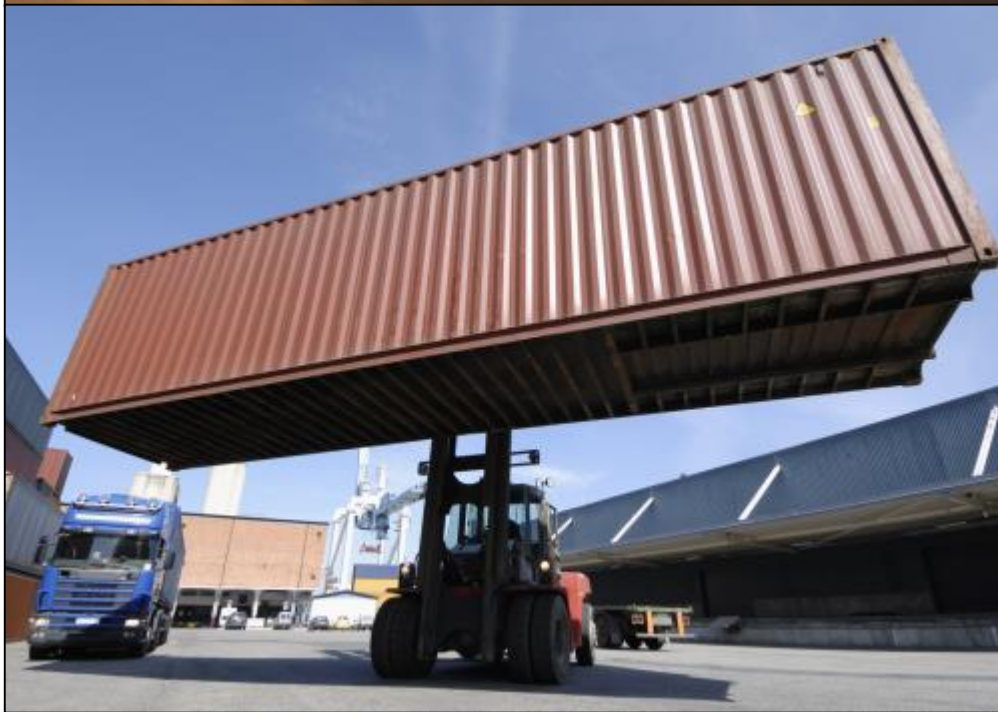


TOP TEN CARGO AIRPORTS IN ASIA (2013)

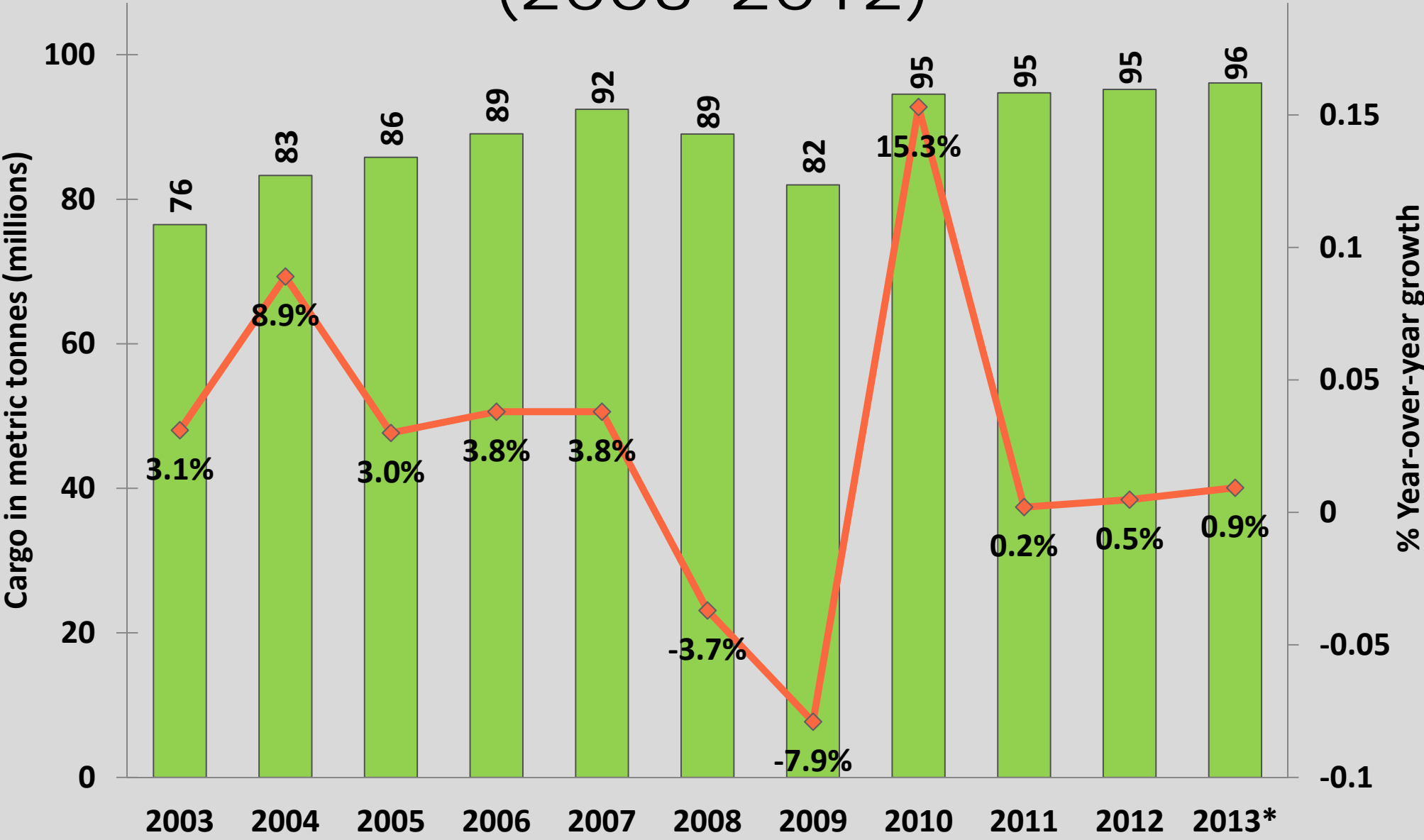
Rank 2013	Rank 2003	City, Country	Airport code	Cargo (tonnes)	% Change (2013/2012)	% CAGR 2003–2013
1	1	Hong Kong, Hong Kong, China	HKG	4 166 303	2.4%	4.6%
2	6	Shanghai, China	PVG	2 928 527	-0.3%	9.4%
3	3	Incheon, Korea	ICN	2 464 384	0.3%	2.9%
4	2	Tokyo, Japan	NRT	2 019 844	0.7%	-0.6%
5	4	Singapore, Singapore	SIN	1 885 978	0.8%	1.5%
6	10	Beijing, China	PEK	1 843 681	2.4%	10.8%
7	5	Taipei, Taiwan	TPE	1 571 814	-0.4%	0.5%
8	12	Guangzhou, China	CAN	1 309 746	4.9%	9.2%
9	7	Bangkok, Thailand	BKK	1 236 223	-8.1%	2.7%
10	9	Tokyo, Japan	HND	954 446	4.9%	2.8%

ZHENGZHOU XINZHENG INTERNATIONAL AIRPORT





TOTAL WORLDWIDE AIR CARGO (2003-2012)





3%

1.7%

MARKET MARKET

SHARE SHARE

IN

IN

2000

2013





AFGHANISTAN
PAKISTAN
KARACHI
AHMADABAD
MUMBAI (BOMBAY)
HYDERABAD
CHENNAI
BANGALORE
SRI LANKA
MALDIVES
MADAGASCAR

INDIA
TIBET
NEPAL
KATHMANDU
BHUTAN
GANGES
KOLKATA (CALCUTTA)
BANGLADESH
BURMA (MYANMAR)
THAILAND
VIETNAM
CAMBODIA
SOUTH CHINA SEA
ANDAMAN ISLANDS
NICOBAR

CHINA
MONGOLIA
TIANJIN
CHONGQING
HONGKONG
GUANGZHOU
HONGKONG
TAIWAN
PHILIPPINES
LUZON
MANILA



The
voice of the
world's
airports



Leading, representing and serving the global airport community

www.aci.aero