

## Data sets Management and Exchange

ICAO MID Region - AIM Sub-Group (AIM SG/10) - Feb. 28<sup>th</sup>, 2024

**CONTENT:**



**KSA DATA SETS**



**DATA SETS  
GENERATION STATUS**



**DATA DISTRIBUTION  
PORTAL**



**DATA SETS EXCHANGE**



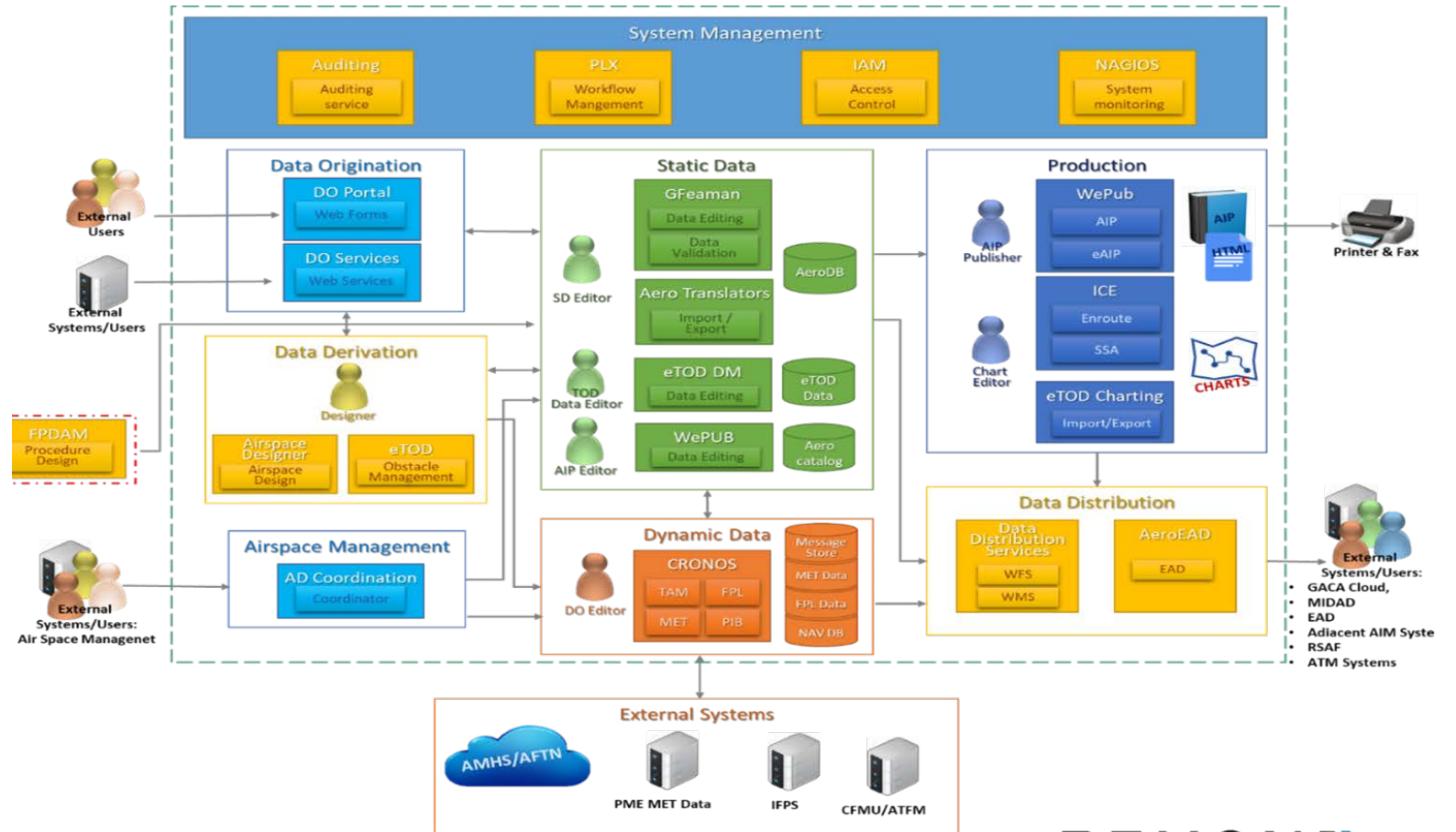
**KSA-AIM DATA  
SETS ROADMAP**



# NEW AIM AUTOMATION SYSTEM

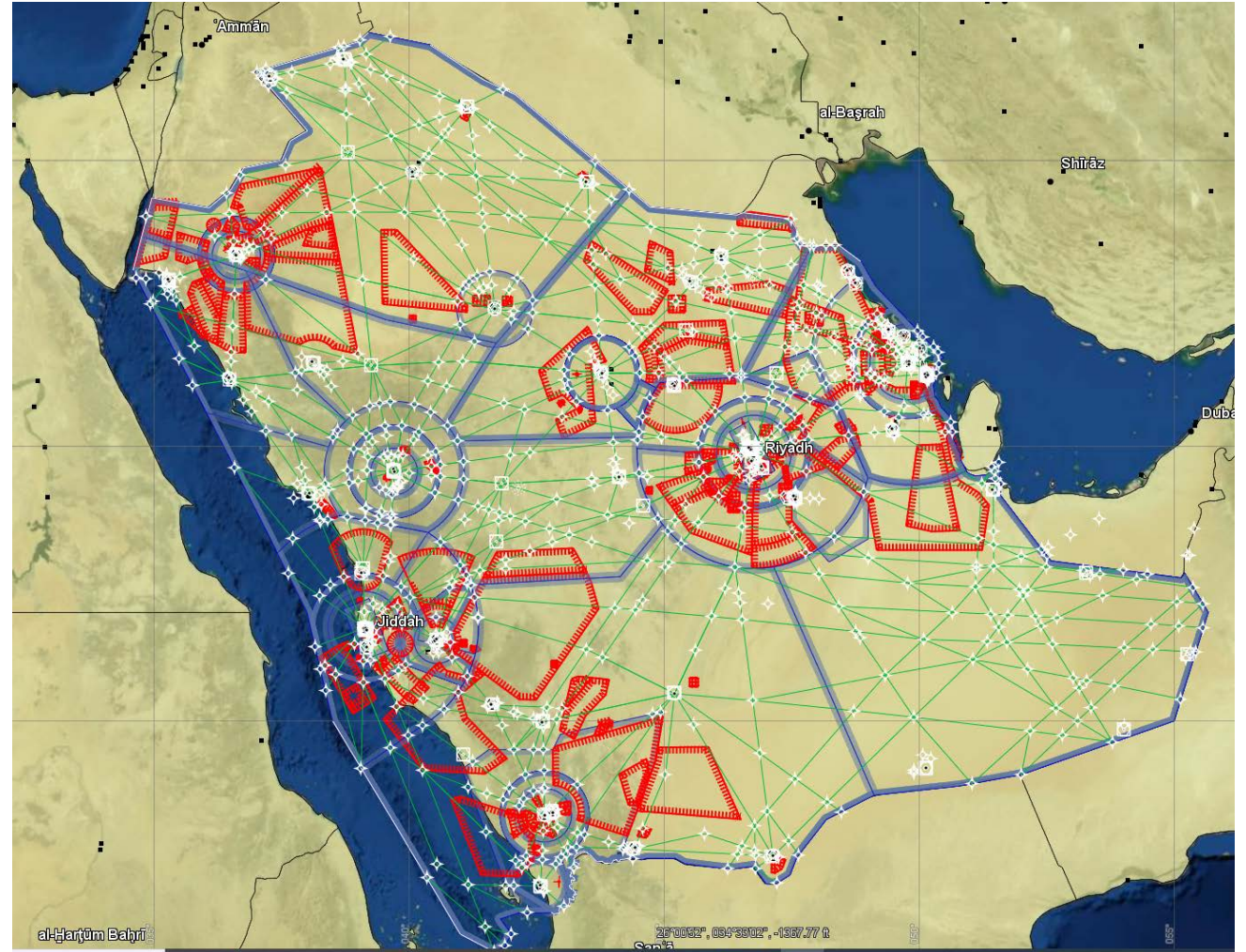


- Full Operation
- Data sets generation



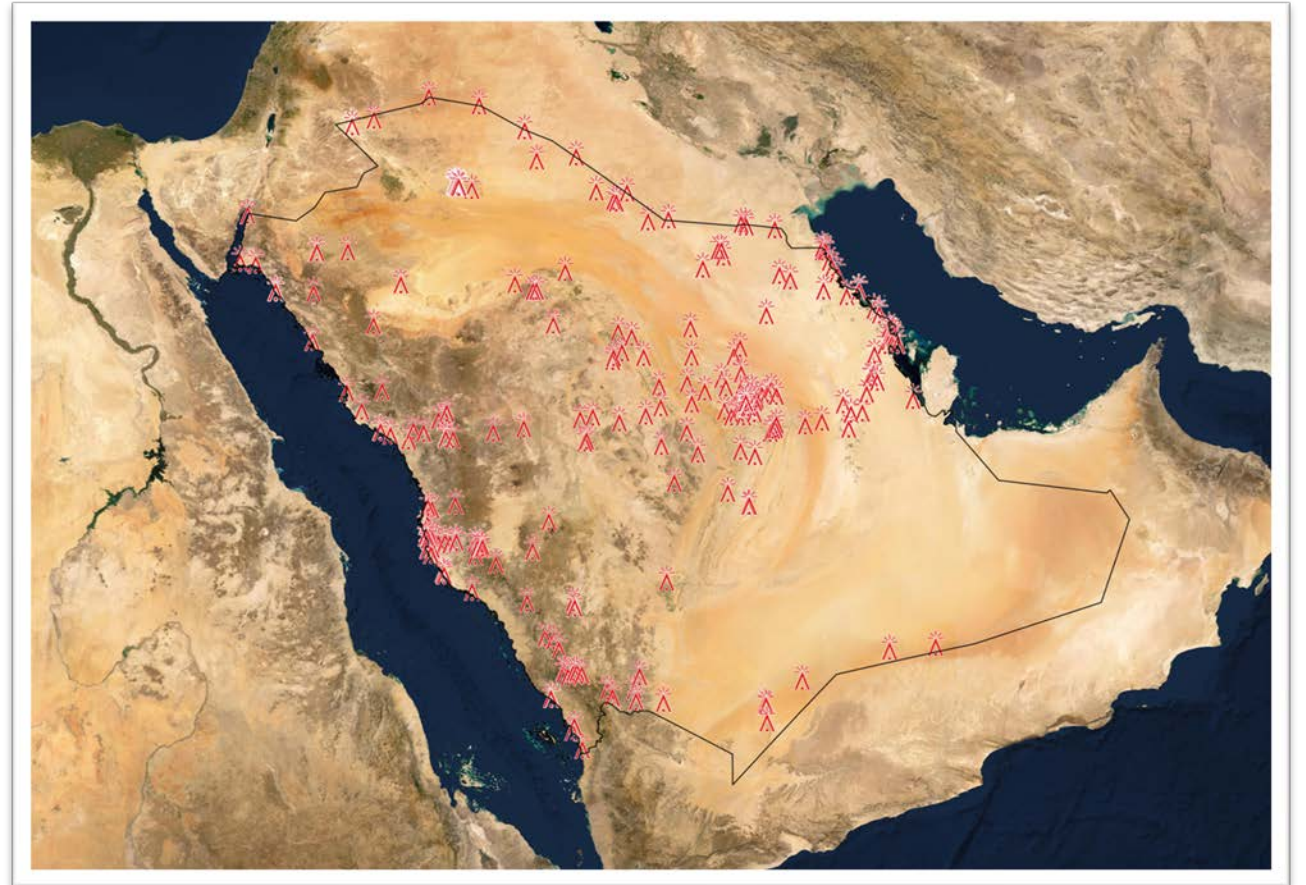
## DATA SETS GENERATION STATUS

FULL AIP DATA SETS



## KSA DATA SETS GENERATION STATUS

OBSTACLES DATA SETS



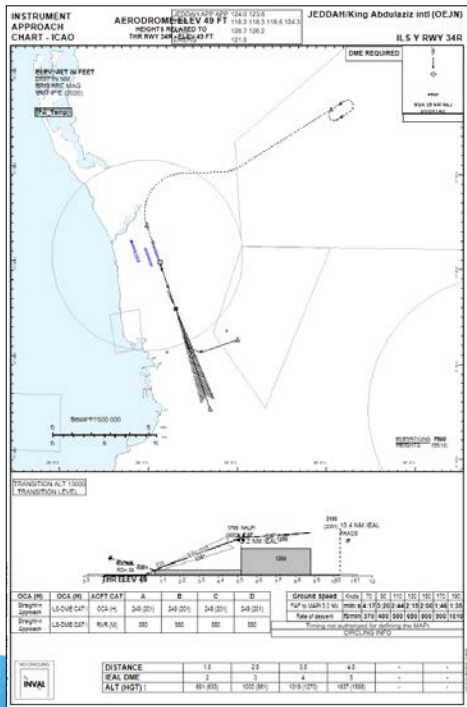
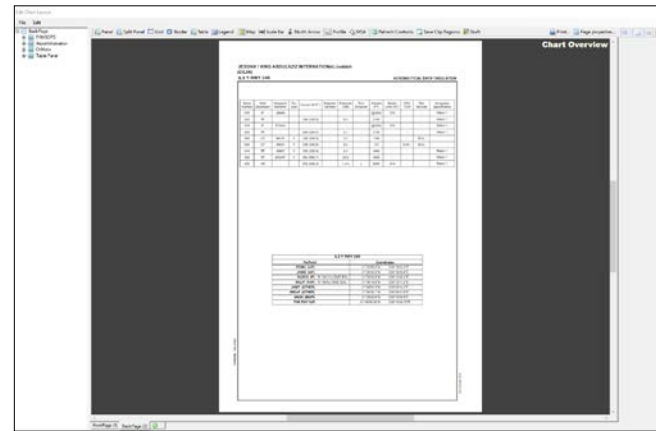
# DATA SETS GENERATION STATUS

## Instrument Flight Procedure DATA SET MANAGEMENT AUTOMATIC GENERATION OF CHART

Chart generation

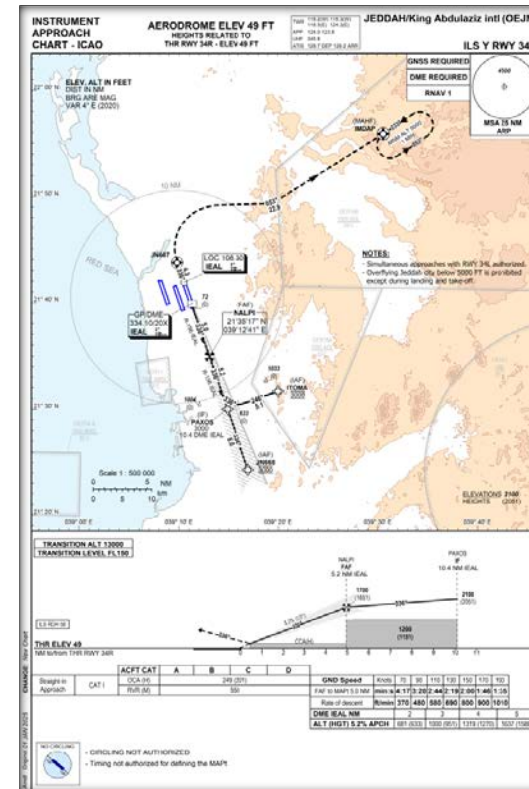
Tabular Description

Charting Tool Generation

**Chart Overview**

Serial	Path	Waypoint	Altitude	Speed	Turn	Distance	Magnetic	Distance	Turn	Altitude	Speed	VNAV	Navigation
010	IF	JN668	-	-	-	-	-	-	-	-	-	-	RNAV 1
020	TF	-	336 (339.8)	-	6.0	-	3100	-	-	210	-	-	RNAV 1
010	IF	(TOMA)	-	-	-	-	-	-	-	3100	-	-	RNAV 1
020	TF	-	348 (349.8)	-	5.1	-	2100	-	-	2100	-	-	RNAV 1
020	CF	NALPI	Y 336 (339.8)	-	5.2	-	1700	-	-	-	-	-	-
030	CF	JN624	Y 336 (339.8)	-	5.0	-	107	-	-	3307	-	-	-
010	TF	JN607	Y 238 (239.8)	-	4.3	-	4004	-	-	-	-	-	RNAV 1
020	TF	JN649	Y 593 (596.7)	-	22.9	-	4500	-	-	-	-	-	RNAV 1
030	HM	-	-	-	1 min	L	8000	-	-	210	-	-	RNAV 1



**JEDDAH/King Abdulaziz Intl (OEJN)**  
ILS Y RWY 34R  
AERONAUTICAL DATA TABULATION

**TABULAR DESCRIPTION**

Serial	Path	Waypoint	Altitude	Speed	Turn	Distance	Magnetic	Distance	Turn	Altitude	Speed	VNAV	Navigation
010	IF	JN668	-	-	-	-	-	-	-	-	-	-	RNAV 1
020	TF	-	336 (339.8)	-	6.0	-	3100	-	-	210	-	-	RNAV 1
010	IF	(TOMA)	-	-	-	-	-	-	-	3100	-	-	RNAV 1
020	TF	-	348 (349.8)	-	5.1	-	2100	-	-	2100	-	-	RNAV 1
020	CF	NALPI	Y 336 (339.8)	-	5.2	-	1700	-	-	-	-	-	-
030	CF	JN624	Y 336 (339.8)	-	5.0	-	107	-	-	3307	-	-	-
010	TF	JN607	Y 238 (239.8)	-	4.3	-	4004	-	-	-	-	-	RNAV 1
020	TF	JN649	Y 593 (596.7)	-	22.9	-	4500	-	-	-	-	-	RNAV 1
030	HM	-	-	-	1 min	L	8000	-	-	210	-	-	RNAV 1

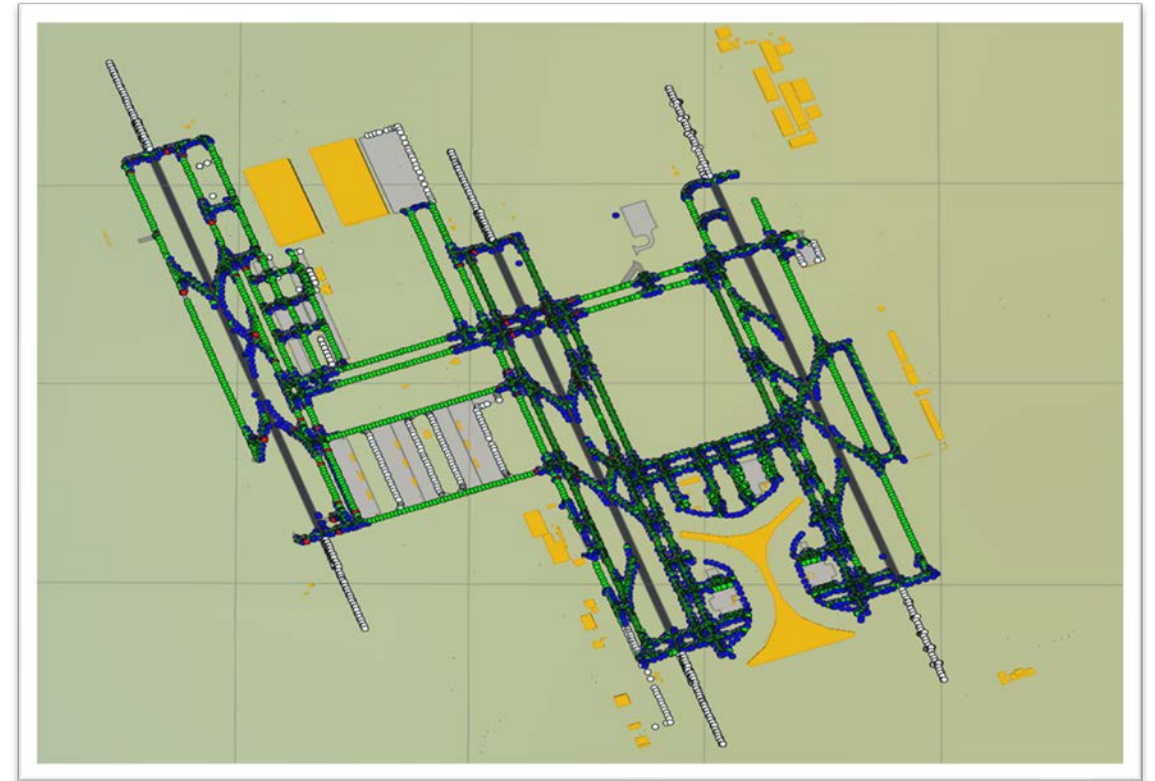
**WAYPOINT LIST**

Waypoint	Coordinates
(TOMA) (MAP)	21°22'58.97N 039°18'43.97E
JN668 (MAP)	21°24'44.67N 039°18'49.67E
PAKOS (IF) - R 156/10.4 DME ICAO	21°30'24.97N 039°14'36.47E
NALPI (MAP) - R 156/5.2 DME ICAO	21°35'18.87N 039°12'41.27E
JN607	21°44'51.57N 039°18'14.97E
JN649	21°36'35.17N 039°28'47.67E
JN624 (MAP)	21°39'59.67N 039°10'49.78E
THE RWY 34R	21°39'59.67N 039°10'49.78E

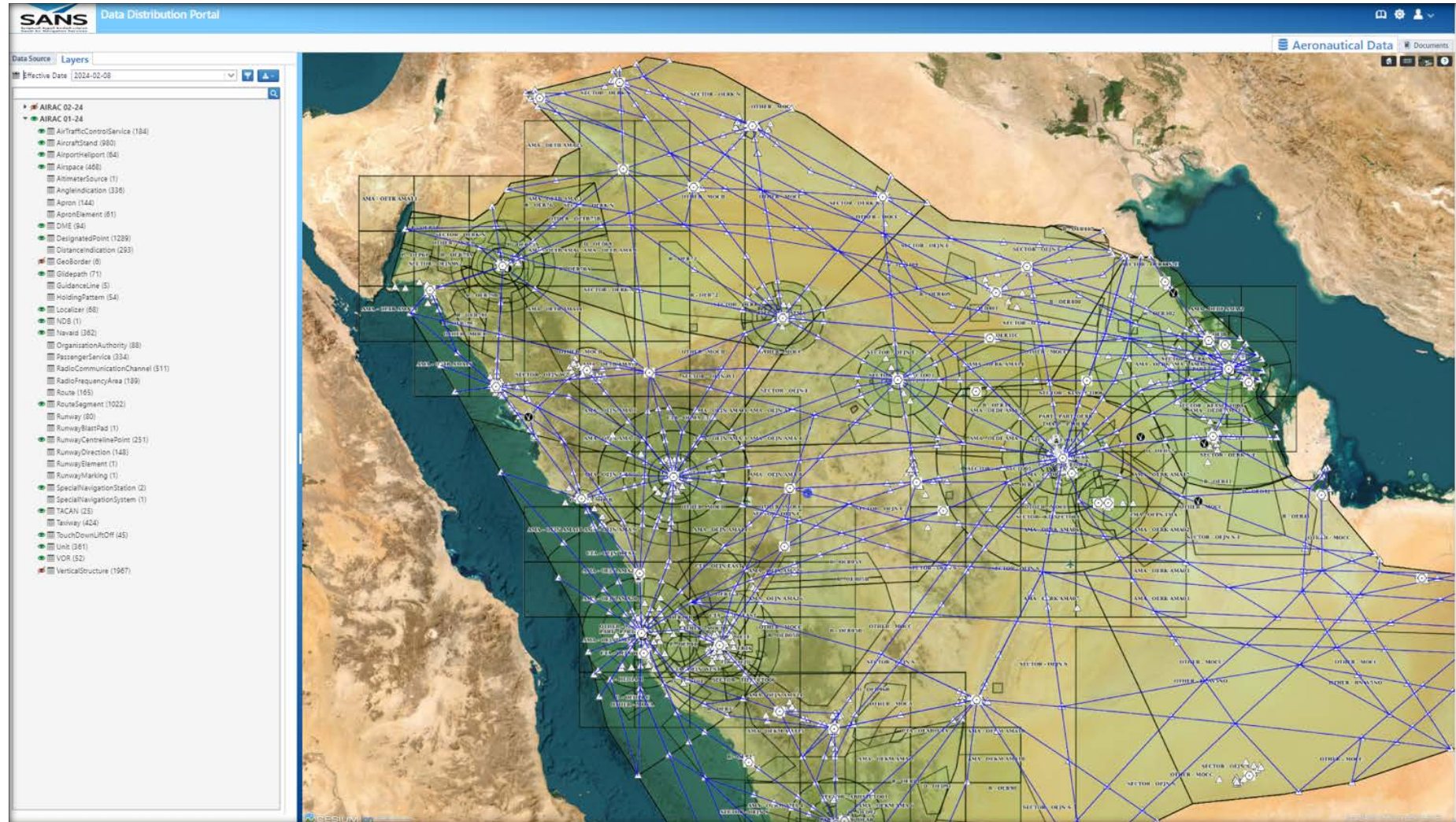
## DATA SETS GENERATION STATUS

### Aerodrome Mapping Data Sets Management

- The content of the aerodrome mapping data sets is defined in Radio Technical Commission for Aeronautics (RTCA) Document DO 272D/European Organization for Civil Aviation Equipment (EUROCAE) Document ED 99— User requirement for Aerodrome Mapping Information.



# DATA DISTRIBUTION PORTAL



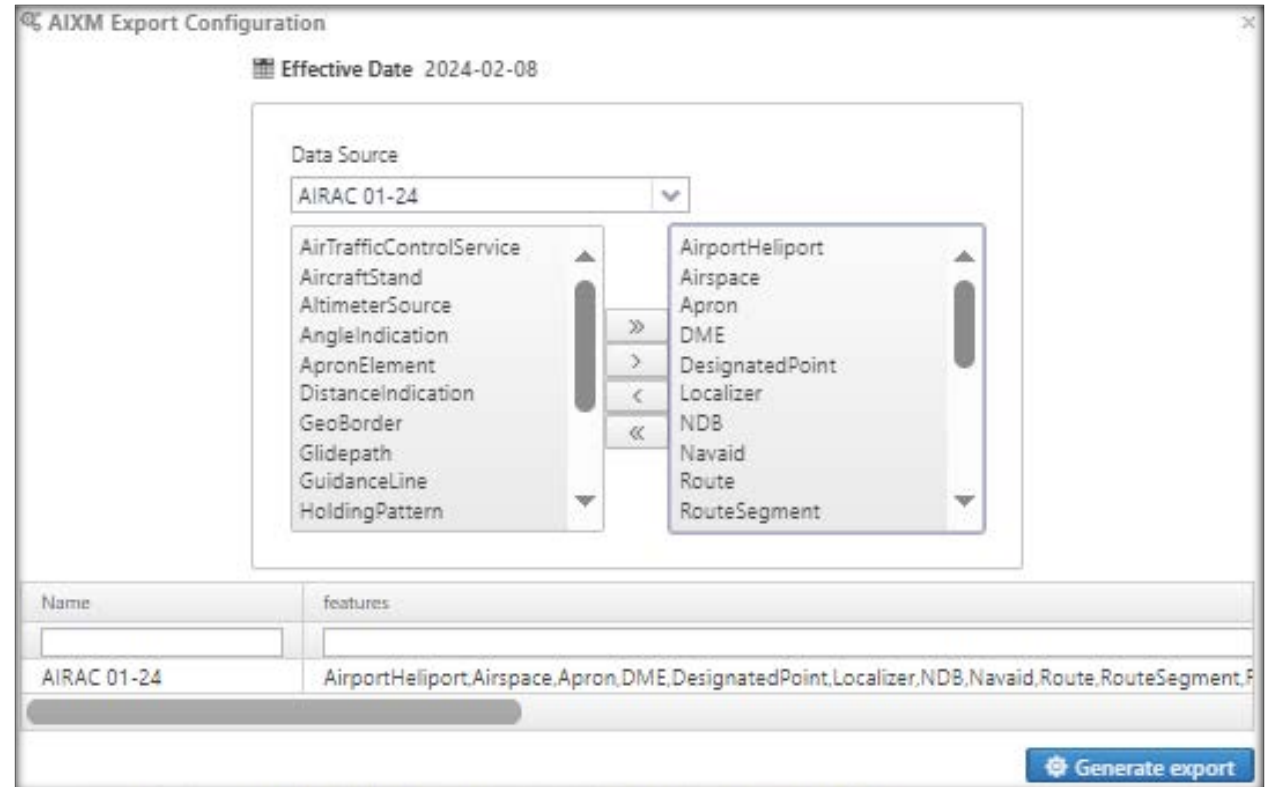
☐ Make the data sets available for the end users





# DATA DISTRIBUTION PORTAL

- ❑ Data Distribution Portal data sets export



The screenshot shows the 'AIXM Export Configuration' window. At the top, it displays 'Effective Date 2024-02-08'. Below this, there is a 'Data Source' dropdown menu set to 'AIRAC 01-24'. The main area contains two lists of data sets with navigation arrows between them. The left list includes: AirTrafficControlService, AircraftStand, AltimeterSource, AngleIndication, ApronElement, DistanceIndication, GeoBorder, Glidepath, GuidanceLine, and HoldingPattern. The right list includes: AirportHeliport, Airspace, Apron, DME, DesignatedPoint, Localizer, NDB, Navaid, Route, and RouteSegment. Below the lists is a table with columns 'Name' and 'features'. The table contains one row for 'AIRAC 01-24' with features: 'AirportHeliport,Airspace,Apron,DME,DesignatedPoint,Localizer,NDB,Navaid,Route,RouteSegment,F'. A 'Generate export' button is located at the bottom right of the window.

Name	features
AIRAC 01-24	AirportHeliport,Airspace,Apron,DME,DesignatedPoint,Localizer,NDB,Navaid,Route,RouteSegment,F

## DATA SETS EXCHANGE

- ❑ Mutual disclosure Agreement between SANS/AIM and Jeppesen Signed since October 2023.
  
- ❑ AIXM Data Validation
  - **Import Issues Check**
    - Allows to identify the Import issues which can prevent data upload.
    - UUID, UOM availability, wrong XML structure, etc.
  
  - **Missing Links Validation**
    - Check for references to non-existing features.
  
  - **Geometry Completeness Validation**
    - Check for features with missing geo properties.
  
  - **AIXM Business Rules Validation**
    - Check for compliance with AIXM business rules:
      - AIXM 5.1 Model Business Rules
      - EAD Business Rules
      - ICAO Annex 15 and Doc 10066 PANS-AIM Business Rules

# KSA-AIM DATA SETS IMPLEMENTATION ROADMAP

Steps/Elements	2023		2024		2025		2026		2027		2028		2029		Priority	Remarks
	1	2	1	2	1	2	1	2	1	2	1	2	1	2		
<b>AIP datasets</b> (ATS airspace, Special activity airspace, ATS route and other routes, Route segment, Waypoint — en-route, Aerodrome/heliport, Runway, Runway direction, Final approach and take-off area (FATO), Touchdown and lift-off area (TLOF), Radio navigation aid)															1	According to Sub-datasets Group requirements
Instrument Flight Procedure (IFP) Dataset(s)															2	
Aerodrome Mapping Dataset(s)															3	





THANK YOU

BEYOND 