

Supporting
European
Aviation



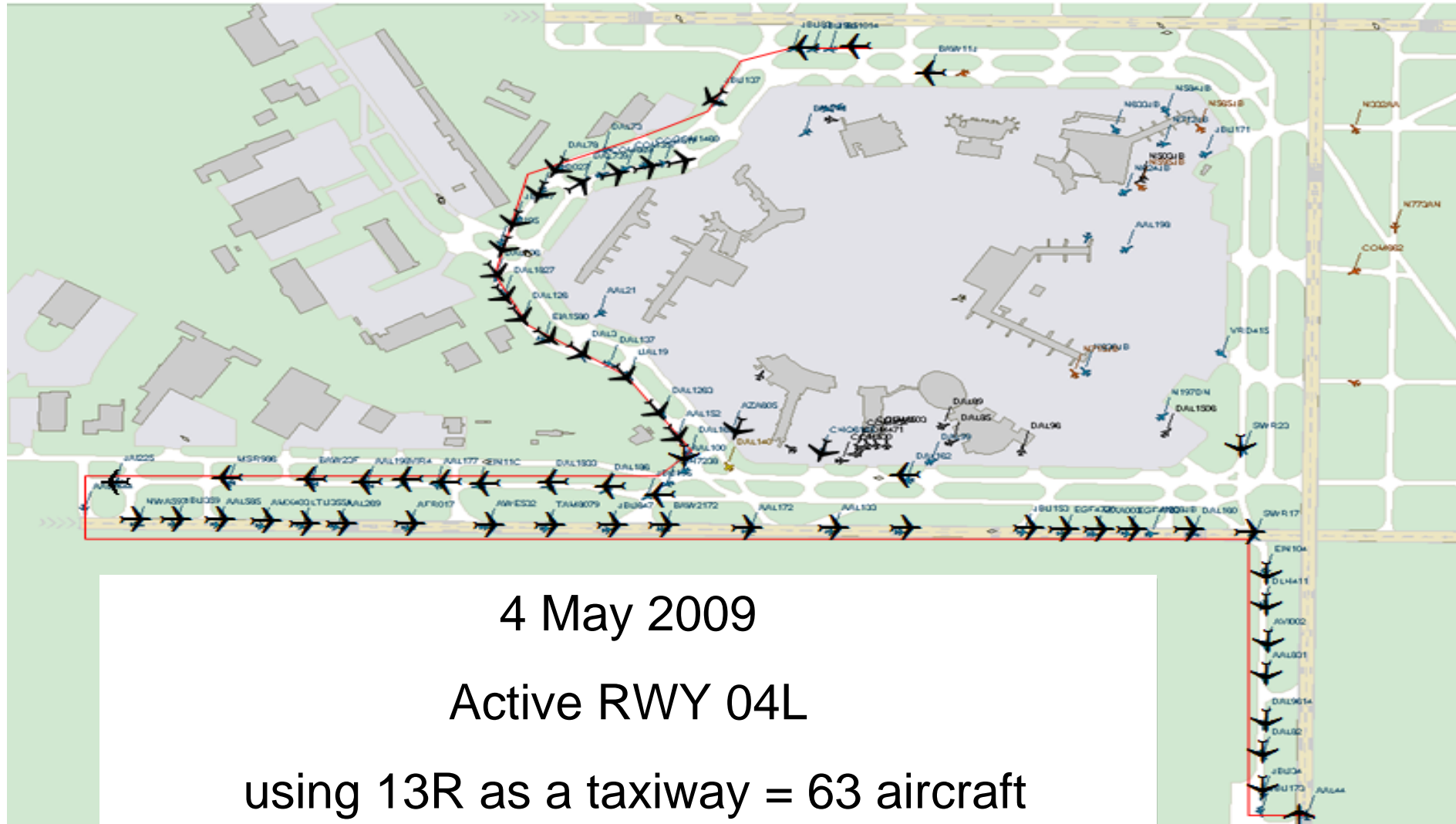
Airport - Collaborative Decision Making Pre-departure sequencing

Dave Booth

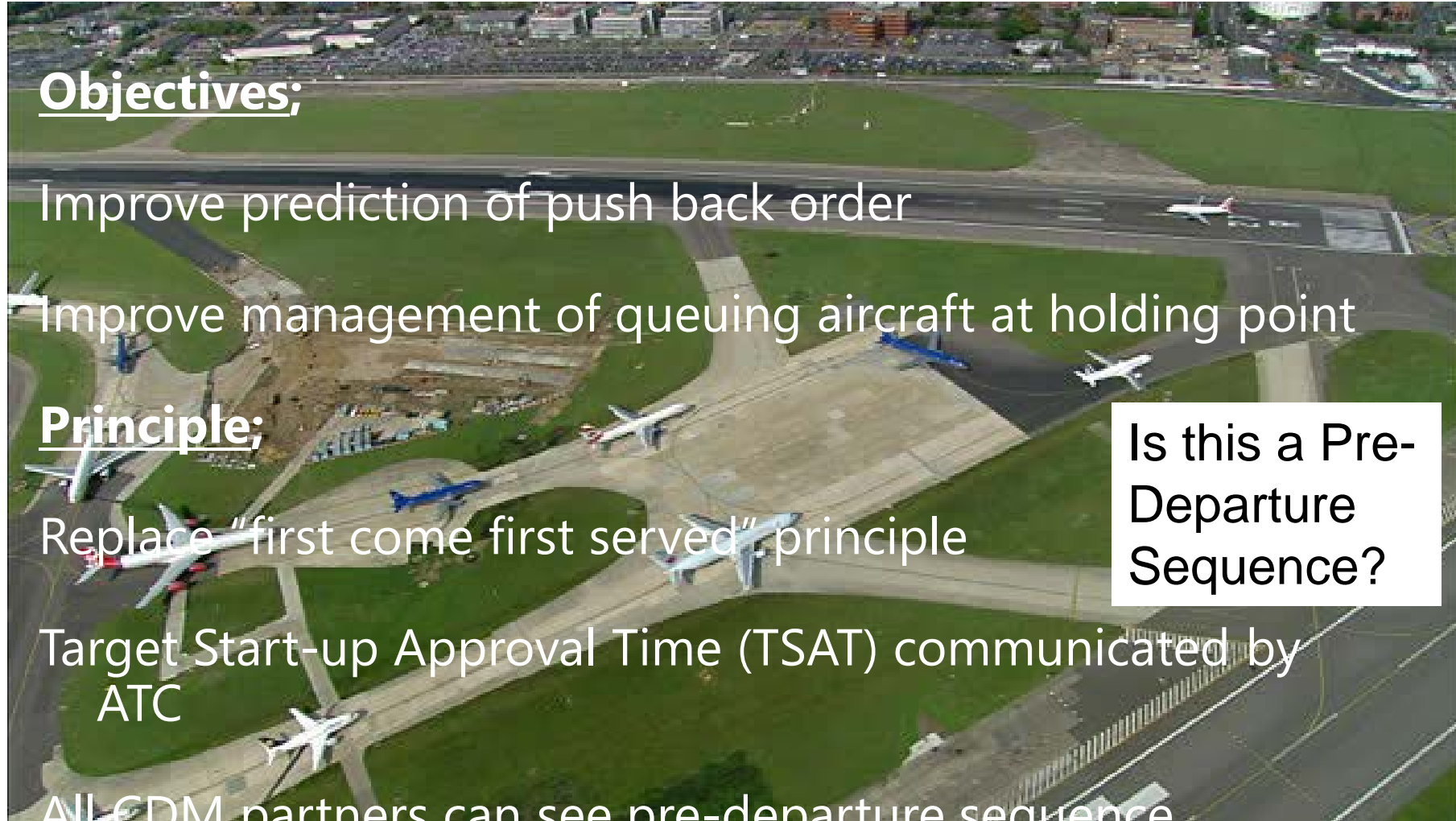
A-CDM Implementation Manager



Pre-Departure Sequence?



Pre-Departure Sequencing



Objectives;

Improve prediction of push back order

Improve management of queuing aircraft at holding point

Principle;

Replace "first come first served" principle

Target Start-up Approval Time (TSAT) communicated by ATC

All EDM partners can see pre-departure sequence

Is this a Pre-Departure Sequence?

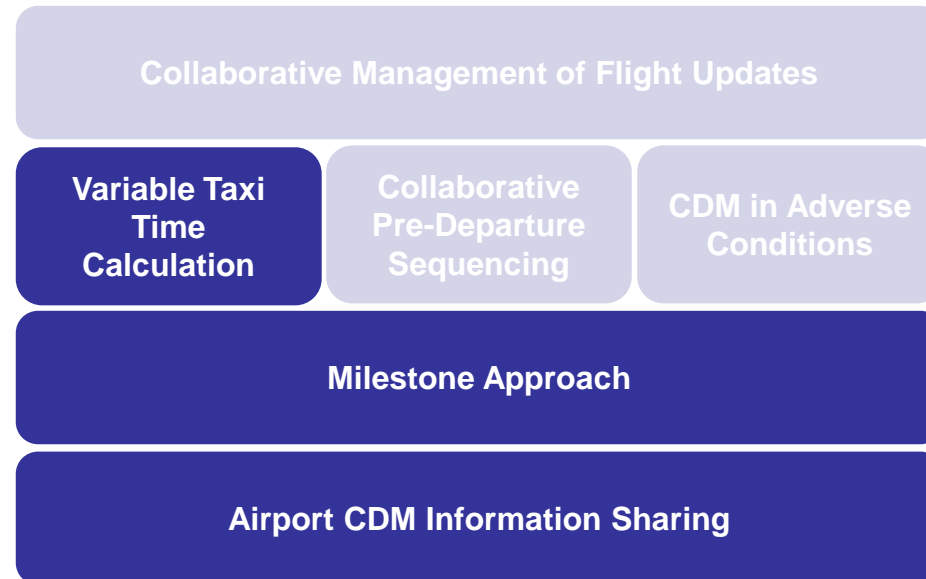
TOBT - TSAT relation:
very important for the pre-departure sequence!

Provide an accurate TOBT
(partners have to trust you)

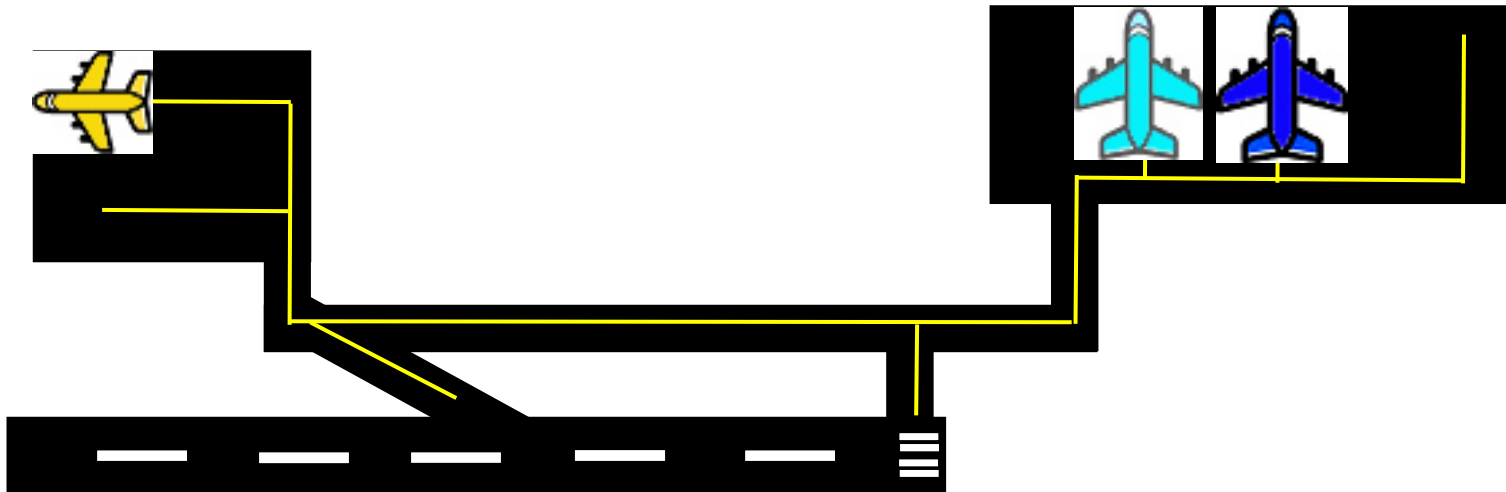
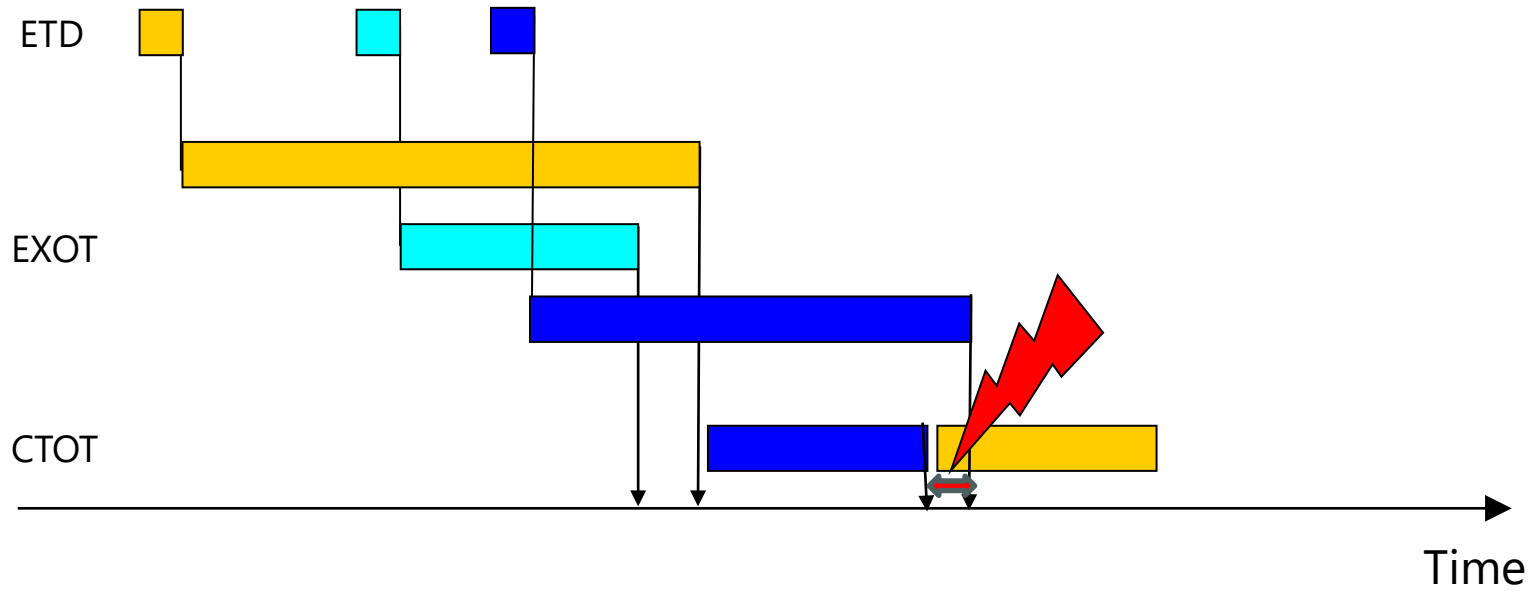
Issued with a good TSAT
(again trust)

Pre-Departure Sequencing

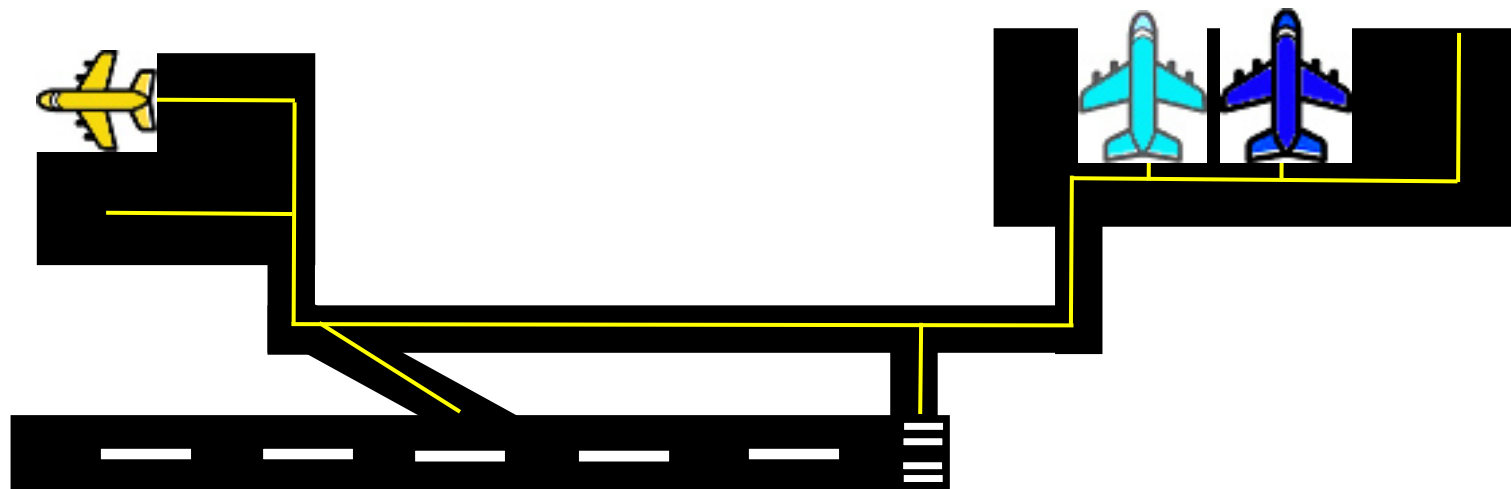
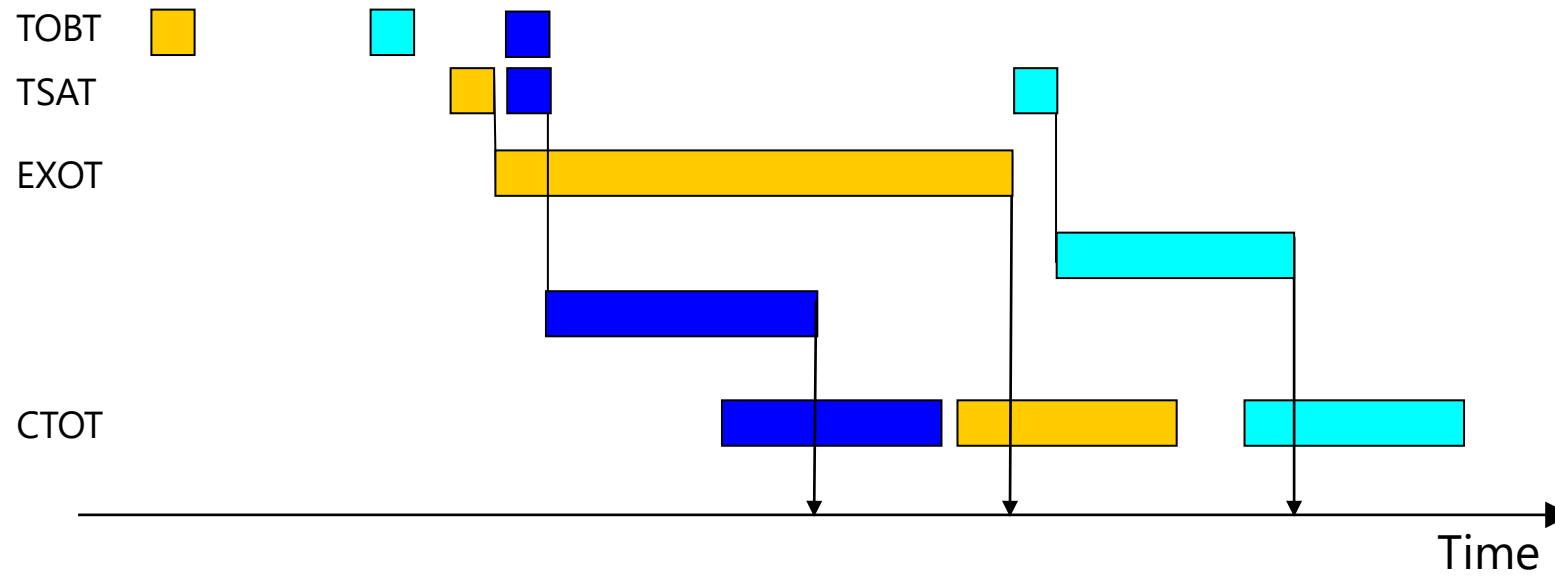
- Which A-CDM concept elements are required to implement Pre-Departure Sequencing?



Without Pre-Departure Sequencing



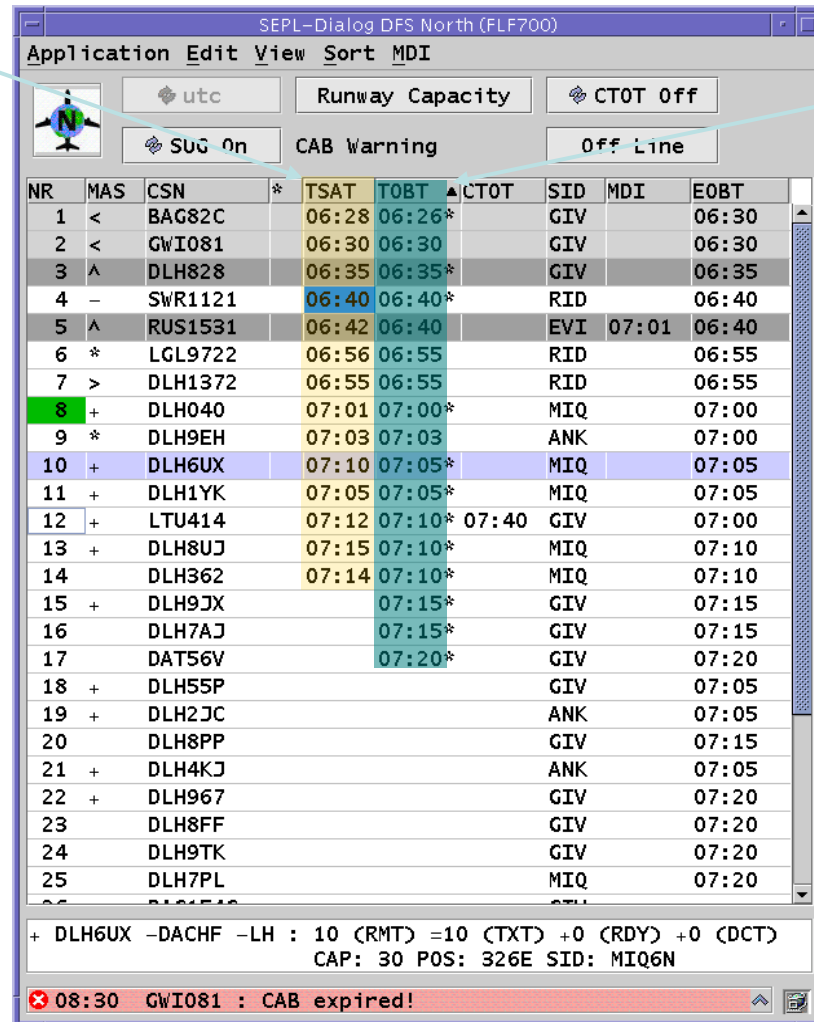
With Predeparture Sequencing



- What maybe taken into account?
- Flights: TOBT, a/c Type, Stand, SID, CTOT
- Assets: Runway in use, SID restrictions (MDI's), Low-Vis procedures, remote holds allocated to flights
- Rules: VTT's, Desired runway buffer hold, Stand contentions, departure separation rules on Wake turbulence SID to SID, pushback durations
- AOBT's and ATOT's feed to give the sequencer situational awareness on the predictions versus the actuals.

Munich HMI

Target Startup Approval Time



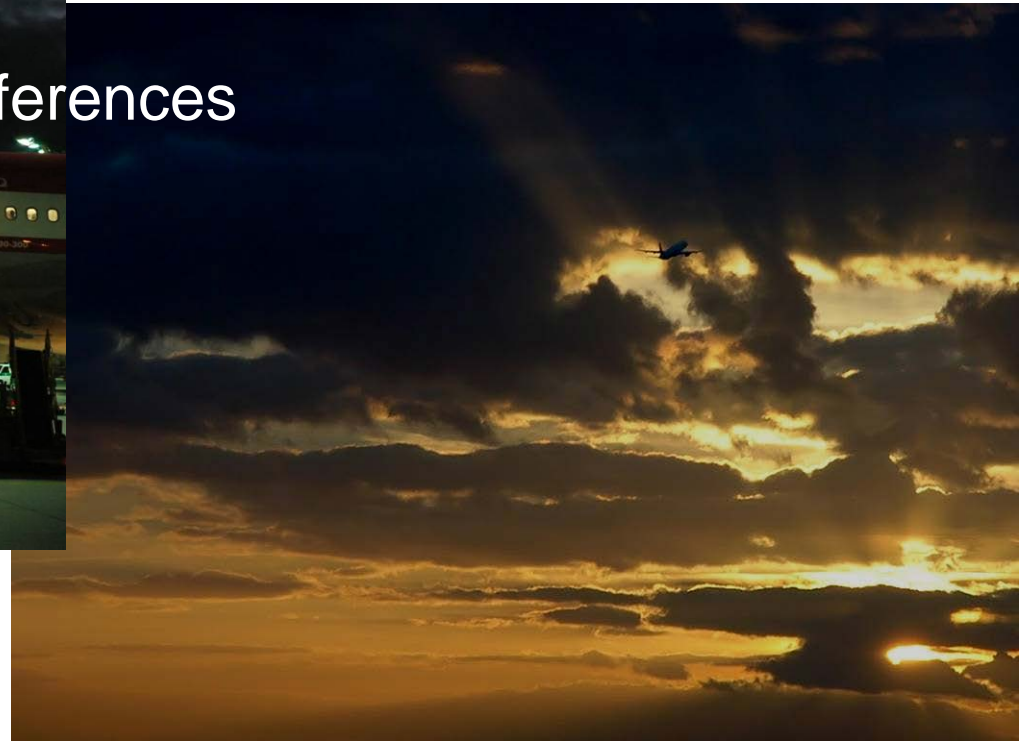
NR	MAS	CSN	* TSAT	TOBT	▲CTOT	SID	MDI	EOBT
1	<	BAG82C	06:28	06:26*		GIV		06:30
2	<	GW1081	06:30	06:30		GIV		06:30
3	^	DLH828	06:35	06:35*		GIV		06:35
4	-	SWR1121	06:40	06:40*		RID		06:40
5	^	RUS1531	06:42	06:40		EVI	07:01	06:40
6	*	LGL9722	06:56	06:55		RID		06:55
7	>	DLH1372	06:55	06:55		RID		06:55
8	+	DLH040	07:01	07:00*		MIQ		07:00
9	*	DLH9EH	07:03	07:03		ANK		07:00
10	+	DLH6UX	07:10	07:05*		MIQ		07:05
11	+	DLH1YK	07:05	07:05*		MIQ		07:05
12	+	LTU414	07:12	07:10*	07:40	GIV		07:00
13	+	DLH8UJ	07:15	07:10*		MIQ		07:10
14		DLH362	07:14	07:10*		MIQ		07:10
15	+	DLH9JX		07:15*		GIV		07:15
16		DLH7AJ		07:15*		GIV		07:15
17		DAT56V		07:20*		GIV		07:20
18	+	DLH55P				GIV		07:05
19	+	DLH2JC				ANK		07:05
20		DLH8PP				GIV		07:15
21	+	DLH4KJ				ANK		07:05
22	+	DLH967				GIV		07:20
23		DLH8FF				GIV		07:20
24		DLH9TK				GIV		07:20
25		DLH7PL				MIQ		07:20

+ DLH6UX -DACHF -LH : 10 (RMT) =10 (TXT) +0 (RDY) +0 (DCT)
CAP: 30 POS: 326E SID: MIQ6N

✖ 08:30 GW1081 : CAB expired!

Target Off-Block Time

Pre-Departure Sequencing will lead to...



Thank you



david.booth@eurocontrol.int