



# Egyptian Airports Company



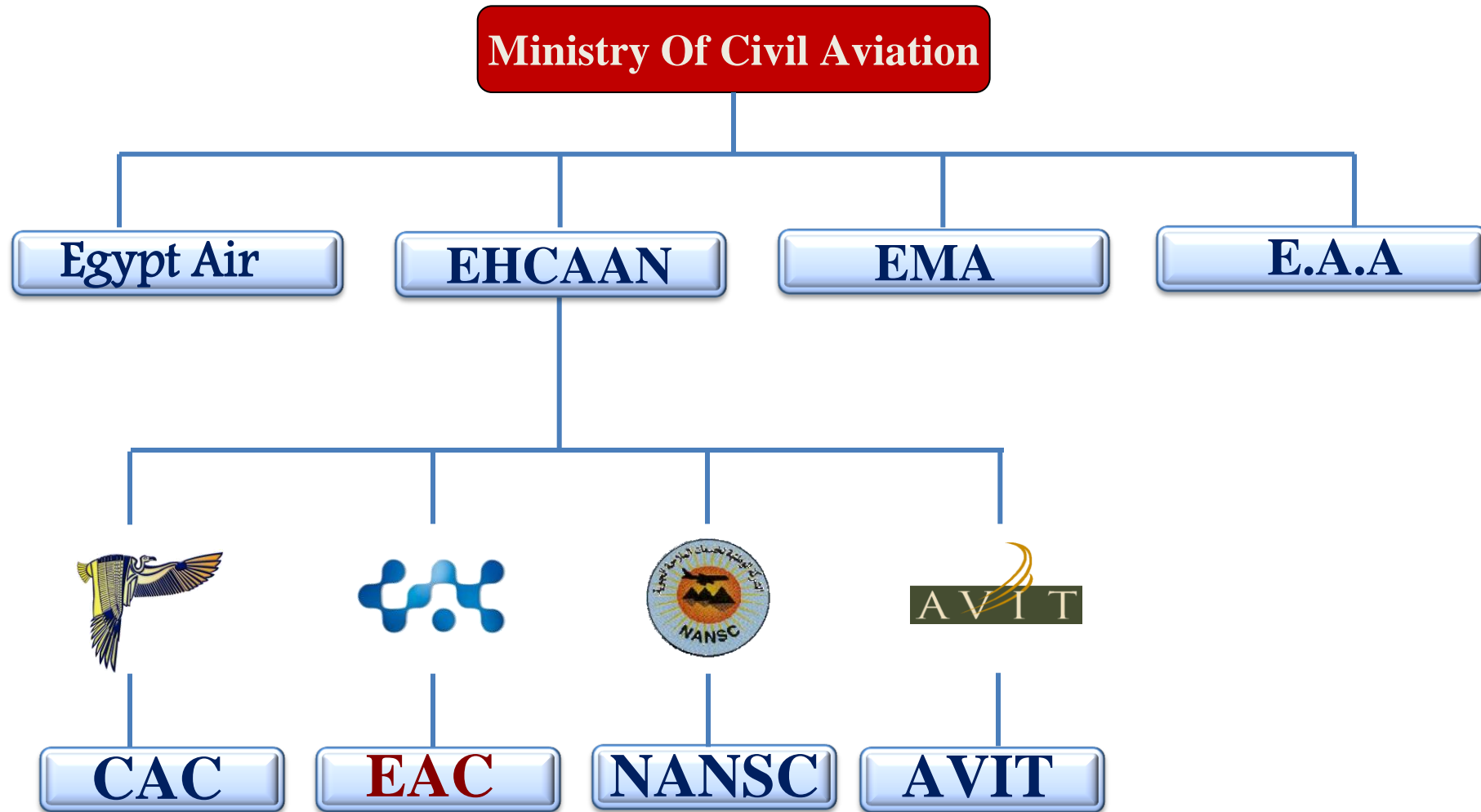
Aerodrome Certification Workshop  
**NCLB 1- 5<sup>th</sup> October 2017**

*Eng. Nabeel Shawky*

## Table Of Contents

- 1 EAC Vision , Mission & Strategies
- 2 Certification Challenges
- 3 NALB- (No Airport lift behind)







## EAC 21 AIRPORTS

### *NORTH SIDE AIRPORTS*

- Alexandria Airport
- Borg El Arab Airport
- Port Said Airport
- Marsa Matrouh Airport

### *SINAI AIRPORTS*

- Sharm EL Sheikh Airport
- Taba Airport
- ST.Catharine Airport
- El-Arish Airport
- El-Tur Airport

### *SOUTH SIDE AIRPORTS*

- Luxor Airport
- Aswan Airport
- Abo Simble Airport
- Sharq El Owaynat

### *Central Region Airports*

- Assuit Airport
- El Kharga Airport
- El Dakhla Airport
- Sohag Airport
- Hurghada Airport
- October Airport

### *BOT*

- Marsa Alam Airport
- El Alameen Airport



# Strategy

1. Attain National Strategic Objectives.
2. Meet Business Needs.
3. Meet Market Demand.

# VISION

**3** Trusted Airports  
ISO Standards  
ACI Ranking



# MISSION

- Passengers
- Businesses
- Community



the highest level of

1. Service
2. Safety
3. Satisfaction
4. Economic Benefits



# VALUES

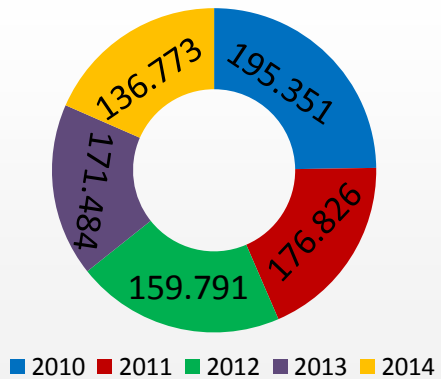
Sustainable Management System  
Control Risk

**30%** Of Manpower

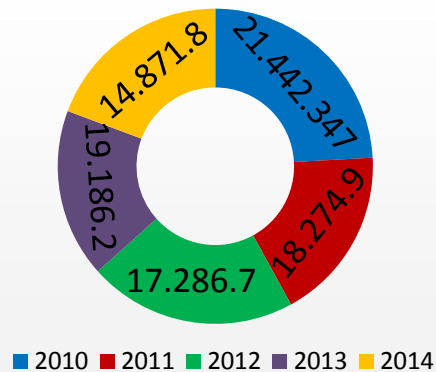
Trained Work Force

# EAC In Numbers

Traffic Movement



Passenger per year

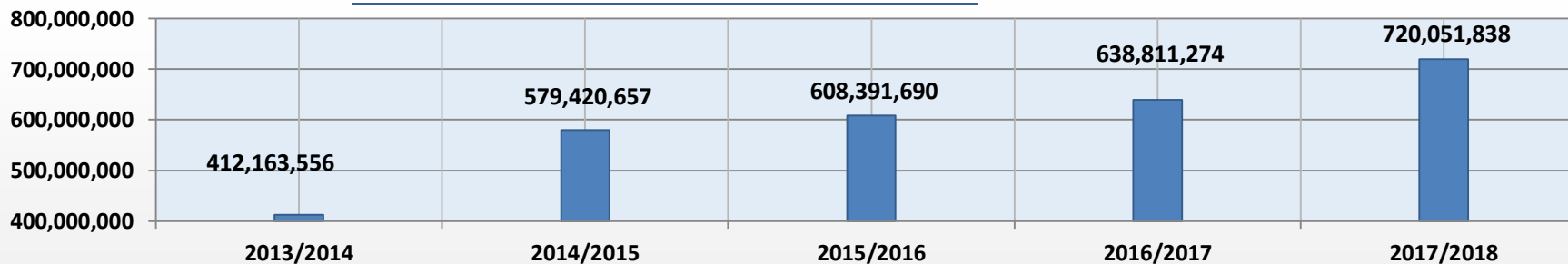


Traffic Movements

Passengers per year

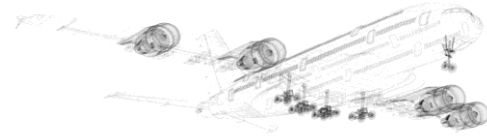
Aviation & Non Aviation Revenue

Aviation and Non-aviation Revenue





الشركة المصرية للمطارات  
Egyptian Airports Co.  
ISO 9001:2008 Certified No. EG1/3037



# 5 Major Airports

- Sharm El Sheikh
- Hurghada
- Borg al Arab
- Luxor
- Aswan

**(Red Sea - North Coast - Nile Valley)**





Airport	Annual Passenger (Combined International and Domestic)										Aircraft Movement in 2013	Average annual growth of Pax	
	2004	2005	2006	2007	2008	2009	2010	2011	2012	2013		2004 -2010	2010 -2013
(1) Cairo EAC Airports	9,534,069	10,218,369	10,778,097	12,577,456	14,360,029	14,378,842	16,135,898	13,037,541	14,729,300	13,773,560	142,711	9.2 %	- 5.4 %
Sharm El Sheikh	4,590,778	4,750,089	5,052,705	6,415,017	7,747,422	7,419,467	8,682,279	5,476,388	6,625,153	5,953,034	43,370	11.2 %	- 13.4%
Hurghada	4,574,531	4,524,022	4,832,530	5,945,254	6,741,017	6,728,291	8,059,849	5,975,423	7,135,972	5,782,566	39,429	9.9 %	- 11.7%
Aswan	1,167,276	1,032,398	874,014	979,034	1,106,809	863,795	954,287	337,809	294,427	250,185	5,878	- 3.3 %	- 56.2%
Luxor	2,123,898	2,256,729	2,032,790	1,976,152	2,160,462	1,847,201	1,934,547	913,867	810,193	639,736	9,884	- 1.6 %	- 44.6%
Borg El Arab	79,091	119,773	230,225	233,762	187,598	371,154	709,961	1,003,758	1,974,678	2,260,540	25,986	23.5 %	10.9 %
(1) Alex / Nozha	412,276	489,439	572,817	728,630	1,102,497	1,097,905	972,022	685,839	43,943	36,091	6,608		
(1) Asyut (Assiut)	62,046	72,367	88,691	130,718	327,918	257,122	312,964	235,927	289,377	359,556	5,531	31.0 %	4.7%
(1) Taba	102,744	149,760	209,953	305,577	452,592	340,147	437,443	306,880	282,273	189,550	1,991	27.3 %	- 32.1%
(1) Marsa Matrouh	19,255	20,661	41,592	50,019	42,294	71,479	114,923	99,515	83,701	57,041	506	34.7 %	- 26.3%
(1) Sohag								221,646	310,714	322,289	3,242		
(1) El Arish	11,931	23,588	15,122	3,256	389	5,024	10,055	5,991	18,592	33,010	8,679	- 2.9 %	48.6%
(1) SharkEl Owainat	3,076	3,950			380			6,559	15,188	22,804	537		
(1) Saint Catherine	598	1,440	921	861	746	744	796	247	1,682	1,267	92	4.9 %	16.8%
(1) Abu Simbel	759,161	650,286	498,573	537,091	632,942	448,576	489,309	119,326	74,091	35,774	848	- 7.6 %	- 239.0%
(1) Port Said	36,228	51,144	53,779	51,806	42,746	30,196	39,108	36,962	39,511	41,499	9,703	1.3 %	2.0%
(1) El Tor		11,926											
(1) El Dakhla	33				82	576	1,326	16	0	1	4		
(1) El Kharga	174		1,762	3,431	4,388	4,277	6,223	3,663	7,259	7,651	650		7.1%
(1) 6th of October													
(1) Marsa Alam	430,014	435,300	500,155	642,807	819,885	938,858	1,182,256	820,078	1,089,167	913,616	7,256	18.4%	- 9.0%
(1) El Alamein		226	17,723	28,800	39,228	31,092	23,889	16,622	19,058	5,795	148		- 160.0%
Total of EAC Airports	14,373,110	14,593,098	15,023,352	18,032,215	21,409,395	20,455,904	23,931,237	16,266,516	19,114,979	16,912,005	170,565	8.9 %	1.3%

# Safety & Compliance Sector Administrative structure

Airport Safety and Metrology (standards)

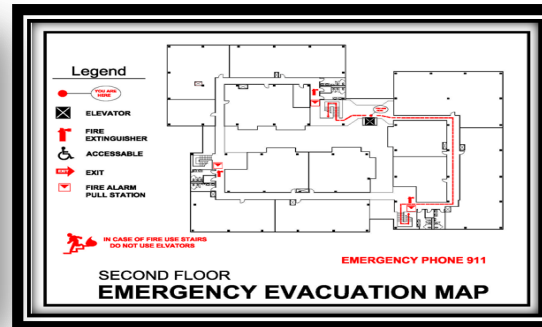
Environment and Occupational Health

General Directorate of Quality



# General Directorate of Airport Safety and Metrology (standards)

- Aerodromes Certification Department
- Safety Department
- Civil defense Department
- Emergency Planning Department





# challenge



A n a l y t i c s   A l e r t s



Training & Development



Safety Under Constructions



Safety Culture



Safety **Vs.** Revenue

# Aerodrome Certification Department

## Technical support

- Workshops
- Problem - solutions Brainstorming
- Coordinating with ECAA
- International Safety experiences



## Review and follow up

- Airport Certification Manual
- Maintenance manual
- Statement of Compliance (SOC)
- Exemptions and attachments
- Appendix 10 patch
- Emergency Plan ... Etc.



# Cont. Aerodromes Certification Department

## Auditing

- Auditing of the different elements of the airport and ensuring matching with the documents.
- Ensure procedures followed during operation
- Discuss how to help finding solutions to various problems.



## Review and study

- the plans of design of new airports or new extensions to ensure compliance with international and national standards



# — Safety Department —

## Technical support

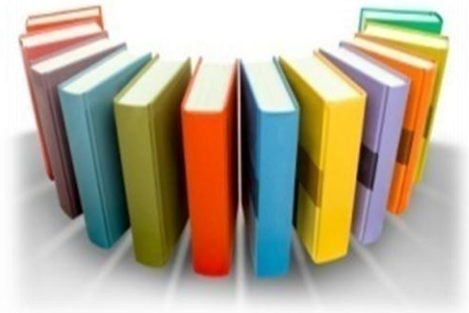
- Workshops
- Holding the main safety committees at Headquarters
- Preparation of internal safety programs, including:
  - **Foreign Object Debris (FOD) Prevention Program**
  - **Runway Incursion Prevention system Program**
- Preparation of a model for safety management system manual
- Preparation of a model for safety procedures during projects
- Preparation of a models to activate the safety management system at airports



# Cont. Safety Department

## Revision of safety documents, including:

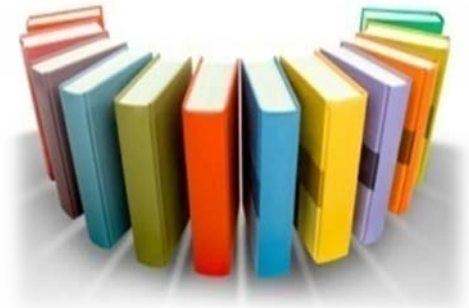
- Review Project safety documents
- Airport certification documents for safety including:
  - Exemptions and attachments
  - Part V of the certification Manual (ACM)
  - Safety Management System Gap Analysis
  - SMS activation plan



# Cont .Safety Department

## Airport safety Audit on:

- Safety management documents and records
- Safety of operational instructions on the Airside are followed
- Movement area marking, signage, lighting, etc.
- Fuel station and the fueling safety process .





# COMMITMENT

The role of headquarters in Airport Certification and Technical Support





# Innovation

## Sandy Soil Stabilizer (compactable and unbreakable)

A mixture of emulsifying polymers is sprayed directly on the sand to be given after a dry surface with good rigidity and elasticity. It is suitable for heavy cars, resistant to stagnant water and direct sunlight and preserves the sand's environmental appearance which the material is transparent after drying.



# Certification & Safety

## Coordination, Cooperation & communication

with **Sharm El-Sheikh** and **Hurghada** airports to obtain the certification for the first time under the supervision of ECAA

## Providing

the certification documents : emergency, maintenance, etc., and the experience gained from **Sharm El-Sheikh & Hurghada** Airports certification to the rest of the airports

## Exchanging experience

between the headquarters and the certified airports to provide technical support for the first certificate of Aswan Airport, Borg EL-Arab , Luxor and other airports for the first time



## SMS Implementation Plan For Airport Operators



- Planning SMS Implementation
- Reactive Safety Management System
- Proactive & Predictive Safety Management System

## Safety OJT

Certification, emergency planning ,self-inspection and firefighting under pressure to airports' employees.

**provide specialized training** in the field of safety and analysis of the incidents by experts in this area as well as holding some workshops at the headquarters for some airports

**Risk analysis –  
Incidents analysis  
ECCAIRS ... etc.**



**Thank you for  
your attention!**

**Any Questions?**