



REPUBLIC OF KENYA

# **9<sup>th</sup> Africa Regional Meeting of the Collaborative Arrangement for the Prevention and Management of Public Health Events in Civil Aviation**

**7<sup>th</sup> June 2023, Mombasa**

## **Kenya's Perspective on Public Health Events**





# Presentation Outline

1. COVID-19 Situation Update
2. Legal Framework
3. Preparedness & Response to PHEICs
4. Challenges & Lessons Learnt
5. Way Forward





# **COVID-19 SITUATION UPDATE AS AT 5<sup>TH</sup> MAY 2023**





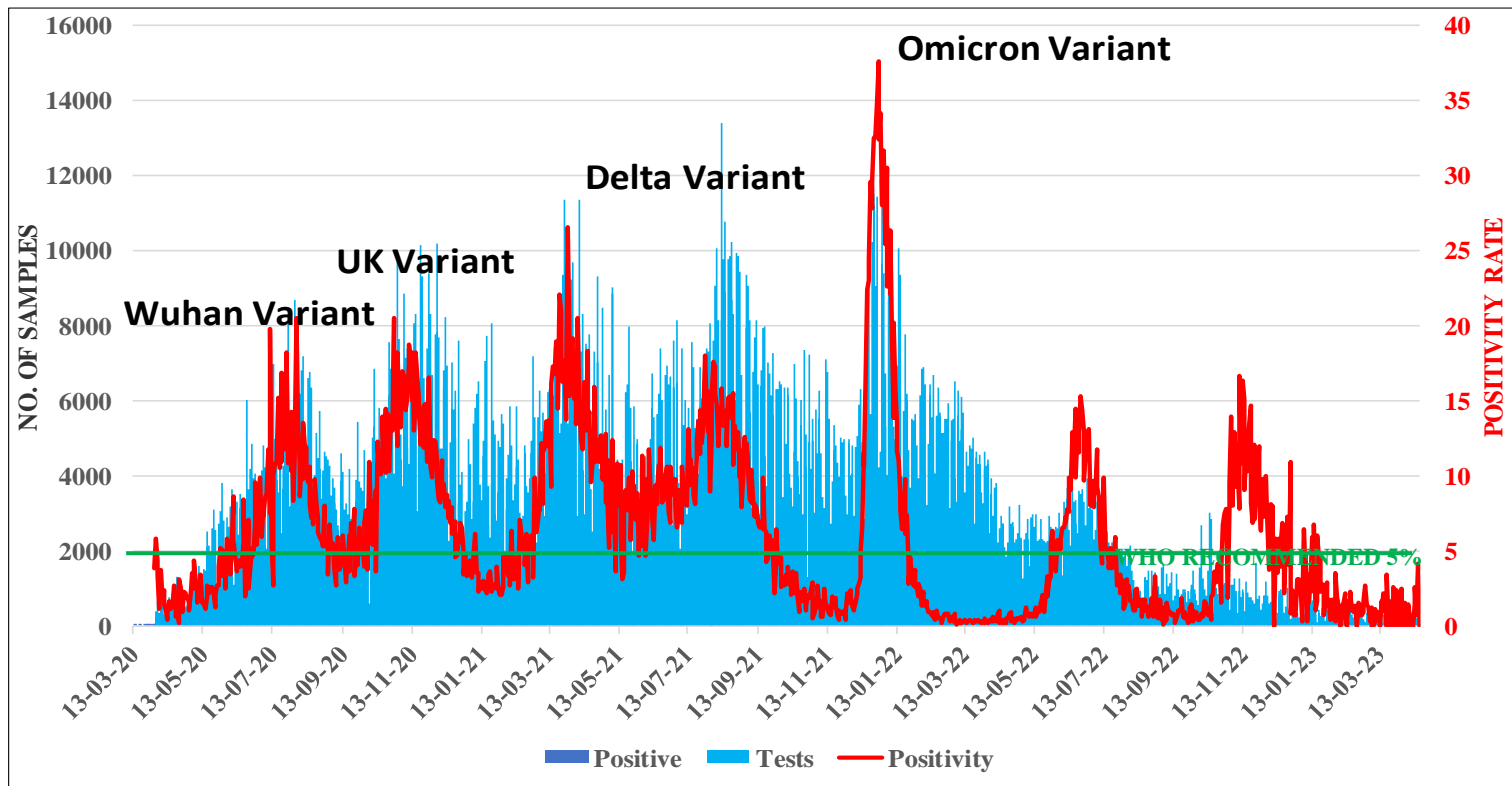
# PANDEMIC STATUS

<b>TESTS</b>	<b>3,935,911</b>
<b>CUM. CASES</b>	<b>342,347</b>
<b>RECOVERIES</b>	<b>336,409</b>
<b>DEATHS</b>	<b>5,688</b>
<b>ACTIVE CASES</b>	<b>217</b>
<b>VACCINES ADMINISTERED</b>	<b>24,176,360</b>
<b>PERSONS VACCINATED</b>	<b>15,488,147</b>





# EVOLUTION OF THE PANDEMIC IN KENYA



06.07.23

RESTRICTED





# **LEGAL FRAMEWORK FOR INTERVENTION MEASURES**



# Legislation, Policies & Protocols

- ✓ Presidential Address of 22<sup>nd</sup> March 2020 - suspended international flights
- ✓ International Health Regulations (2005)
- ✓ ICAO Annex 9
- ✓ Public Health Act Cap 242
- ✓ Security Laws (Amendment) Act Section 75 - BCOCC
- ✓ Food, Drugs & Chemical Substances Act Cap 254
- ✓ Handbook for Standard operating procedures for Port Health Officers at Points of Entry
- ✓ Standard Operating Procedures Manual for coordinated border management
- ✓ Protocol for Air Travel Operations During COVID-19





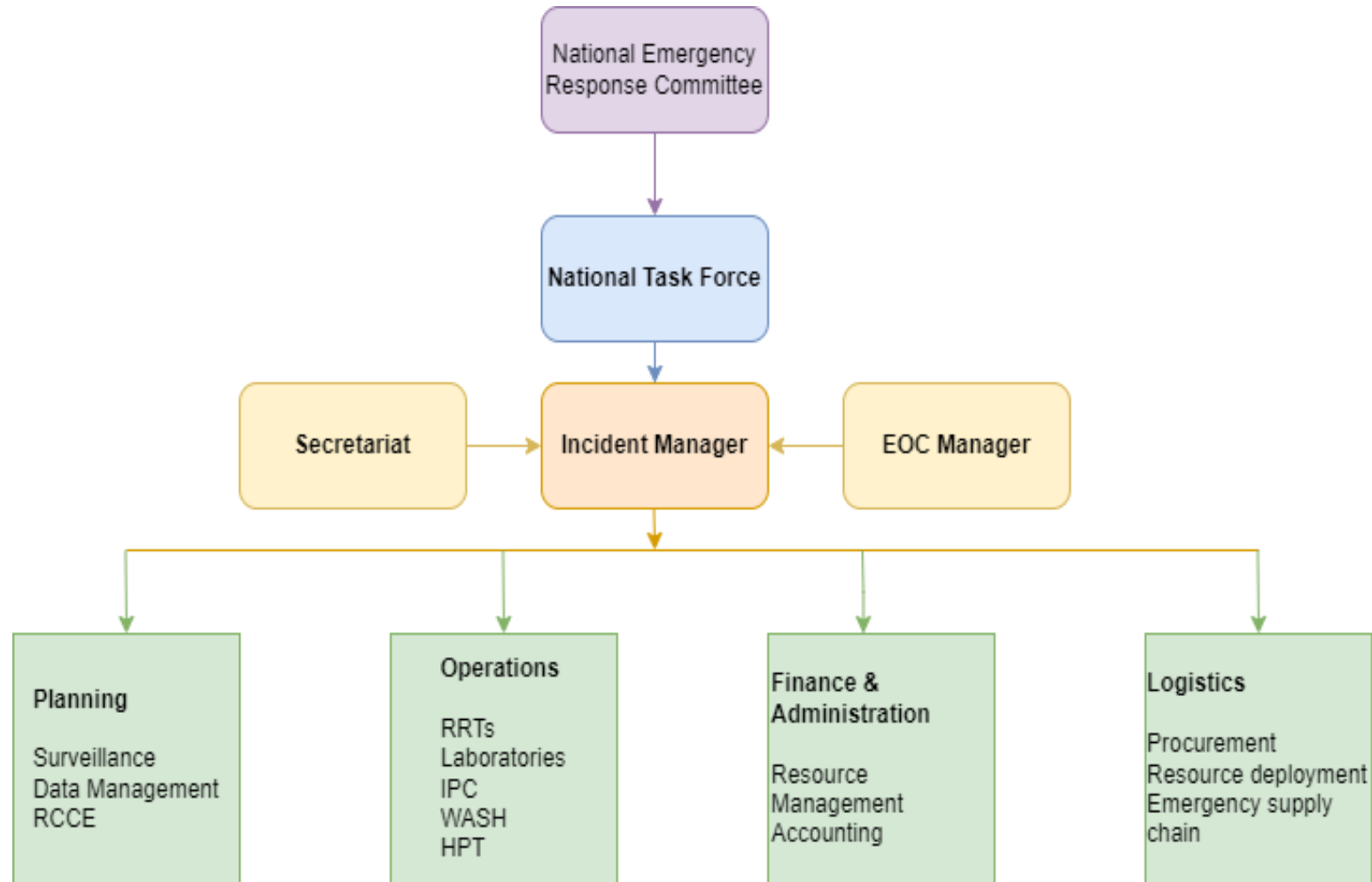
# **PREPAREDNESS AND RESPONSE MEASURES**







# Incident Management System (IMS) Structure



# Preparedness and Response Committees

- ❖ Coordination
- ❖ Surveillance
- ❖ Rapid Response
- ❖ Case Management/IPC/WAS  
H/Mental Health &  
Psychosocial Support
- ❖ Laboratory
- ❖ Risk Communication and Community Engagement (RCCE)
- ❖ Vaccination
- ❖ Medical anthropology
- ❖ Information Management System (IMS)
- ❖ Logistics





# ACHIEVEMENTS



REPUBLIC OF KENYA



# 1. Advancement in Technology

- Screening tools:
  - ✓ thermal cameras with data storage capabilities
  - ✓ Robotics – Jasiri
- Digital passenger surveillance forms:
  - ✓ Jitenge – COVID-19
  - ✓ Jitenge Plus – EVD and MVD
  - ✓ Panabios – COVID-19 test certificates
  - ✓ Global haven - COVID-19 test certificates
  - ✓ M-Chanjo - COVID-19 vaccination certificates



# Screening Tools



## 2. Laboratory Testing at POEs





# 3. Stakeholder Involvement

Internal stakeholders	Activities
KAA	Infrastructure, facilities, Communication, Airport SOPs, Mobilization for trainings, Adherence
KCAA	Liaison with MOH for timely NOTAM updates
AOC	Adherence to protocols, General Health Declarations
Ground handlers	Notification of suspects, adherence to IPC protocols
Security agencies	Suspect escort to quarantine ,Security to health workers





# Stakeholder Involvement

External Stakeholders	Involvement
Humanitarian Aid – WHO, IOM, Red Cross	PPEs, Infrastructures, staff capacity building
Africa CDC	Lab software, PPEs, therapeutics
Embassies – US, Korea, China	PPEs
County Governments	Transfer of cases from the airports, management of cases
Private Hospitals, ambulances	Medical evacuations; Case management
Hotels, Public Institutions	Quarantine Facilities
Religious Community	PPEs





## Our Crew



### PRE-FLIGHT

- 48 hrs COVID -19 Screening
- 75 min Pre-departure Crew briefing
- PPEs-Face masks, gloves, sanitizers, goggles, shoe and hair nets
- Passenger screening &PMC

### IN-FLIGHT

- Mandatory PPE for guests & staff
- Boarding
- Meals handling
- Contactless boarding passes
- Baggage Handling by guests only
- Reduced movement of passengers on board.
- Reduced accessories
- cashless duty free
- Lavatory cleaning

### POST-FLIGHT

- Crew De-briefing; Meet & Assist
- Clean crew; Health screening, PPEs, clean transport; Turn around flights or Hotel QRT
- Continuous Risk assessment & feedback
- Clean Aircraft; Disinfection
- Clean Airport;Segregation



## Our Guests

### Sales

- Passenger pre-flight screening (Regulatory )
- Mandatory PPE

### Airport

- Thermal screening
- Physical distancing
- Mandatory PPE

### On Board

- Physical distancing
- Passenger medical support services
- Mandatory PPE

### Passengers on Arrival

- Thermal screening
- Touchless processes
- Mandatory PPE



# WAY FORWARD





# KEY FOCUS AREAS OF IMPROVEMENT

1. PPE and Sanitizers	<ul style="list-style-type: none"><li>i. Avail high quality, cost effective masks and other PPEs</li><li>ii. Adhere to use of PPE and sanitizers</li></ul>
2. Crew	<ul style="list-style-type: none"><li>i. Global standard for quarantine procedures</li><li>ii. Psycho-social support</li></ul>
3. Airport Infrastructure	<ul style="list-style-type: none"><li>i. Pandemic-ready infrastructure at all airports</li><li>ii. Efficient and effective resource utilization</li></ul>
4. AOCs	<ul style="list-style-type: none"><li>i. Speedy permit approvals</li><li>ii. Global standard for GHAs, PPEs and disinfection requirements</li></ul>
5. Human Resource	<ul style="list-style-type: none"><li>i. Constant retraining to rebuild competence in a post-pandemic world</li></ul>
6. Information Sharing	<ul style="list-style-type: none"><li>i. Interoperability of communication systems</li></ul>
7. Enhancing public health capacity	<ul style="list-style-type: none"><li>i. Create centres of excellence to develop homegrown solutions – lab equipment, reagents, training, vaccines</li></ul>





## PANDEMIC MANAGEMENT FOCUS AREAS

- ❖ **Pandemic preparedness** – adequate resources to manage subsequent surges or pandemics i.e. human resource, ICU beds, oxygen, PPE, waste management
- ❖ **Surveillance** - focus on disease burden including hospitalizations, ICU admissions, deaths as well as Point of Entry surveillance
- ❖ **Risk Communication and Community Engagement** – to rebuild trust and address pandemic fatigue and low risk perceptions
- ❖ **Risk-based travel restrictions** – continually adjust international travel-related measures such as vaccination, screening, testing, isolation and quarantine of travellers based on risk assessments
- ❖ **Coordination, Collaboration, Communication**



# AHSANTE SANA!!

