

<http://www.icao.int/sustainability/Pages/Air-Traffic-Monitor.aspx>

### GLOBAL KEY FIGURES

#### MAY 2022

(versus MAY 2019)

**RPK** ▼ -31.3%   **ASK** ▼ -28.9%   **CTK** ▼ -2.0%   **LF**: 79.1% ▼ -2.4%

#### OUTLOOK\* - JUN 2022

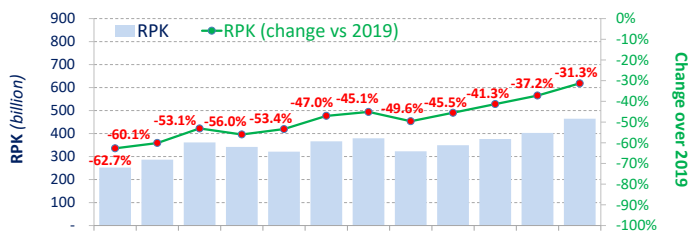
(versus JUN 2019)

**ASK** ▼ -24.8%   \* Source OAG

### PASSENGER TRAFFIC

#### Revenue Passenger-Kilometres - RPK

World passenger traffic in May 2022 was -31.3% below the 2019 level, +5.9 percentage points up from the decline in the previous month. Air travel recovery continued to accelerate, driven by the strong international travel rebound. The pent-up travel demand has been defying the challenging economic backdrop of high inflation and fuel prices. Domestic traffic recovery was moderate, affected by the decline in Chinese domestic market. All regions, except for North America, recorded traffic improvements compared to the previous month.



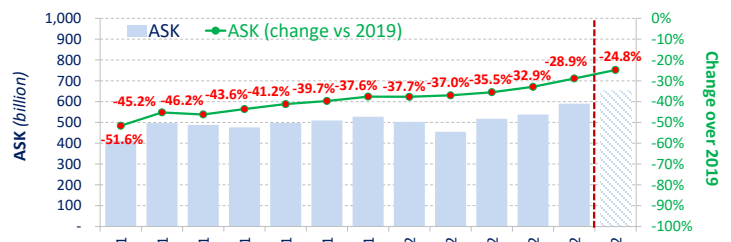
(Source: ICAO, IATA, OAG)

### CAPACITY

#### Available Seat-Kilometres - ASK

Capacity worldwide in May 2022 was -28.9% below the 2019 level, +4.0 percentage points up from the decline in the previous month (-32.9%).

As air travel recovery continues, capacity offered in June is expected to increase to -24.8% down from the 2019 level.

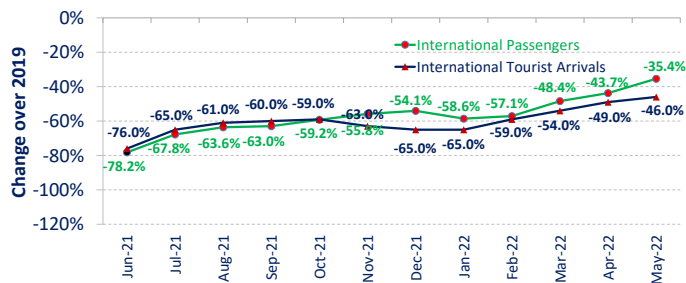


(Source: ICAO, IATA, OAG)

#### International Passengers vs. Tourist Arrivals

International passenger numbers in May 2022 was -35.4% below the 2019 level, +8.3 percentage points up from the decline in the previous month. International air travel recovery improved across all regions, except for Latin America/Caribbean. The Middle East registered the most significant month-on-month improvement.

The recovery in international tourist arrivals followed the similar trend as international passenger traffic.



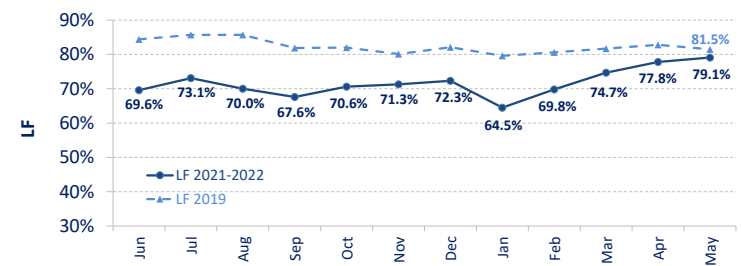
\*UNWTO Definition

(Source: ICAO, UNWTO)

#### Load Factor - LF

The passenger Load Factor reached 79.1% in May 2022, +1.3 percentage points higher than the previous month.

Load factor climbed to pre-pandemic level, and the May level was merely -2.4 percentage points down compared to May 2019.

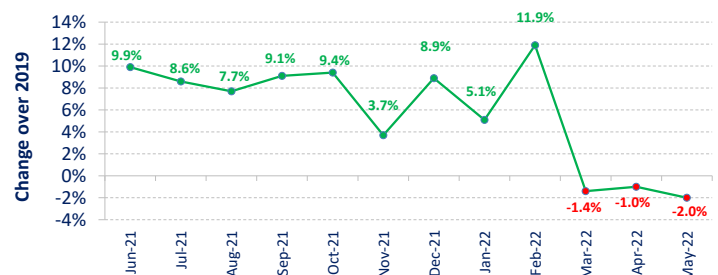


(Source: IATA)

### CARGO TRAFFIC

#### Cargo Tonne-Kilometres - CTK

World cargo traffic in May 2022 was -2.0% below the 2019 level, -1.0 percentage point down from the decline in the previous month. Air cargo traffic remained on a sideways trend with a deterioration in the decline. The volatility in cargo traffic was attributed to multiple macroeconomic factors such as the softening in global trade and the ongoing disruptions on supply chain due to the war. Whereas Europe saw the most noticeable deterioration, Asia/Pacific was the only region recording month-on-month improvements, owing to the increasing manufacturing activities as the lockdown in China was eased. Despite the slowdown, North America and Africa continued to post positive growth over the pre-pandemic level.



(Source: IATA)

## TOP 15 AIRPORTS (Ranked by aircraft departures, passengers and volume of freight)

MAY 2022: -9.4%, -11.4%, and +1.6% (vs. 2019) in terms of aircraft movements, passengers and freight for the Top 15

MAY 22

Airports (ranking by number of departures)	Movements	vs. 2019	Airports (ranking by number of passengers)	Passengers*	vs. 2019	Airports (ranking by tonnes of freight)	Freight**	vs. 2019
Chicago IL, US (ORD)	62,287	↓ -22.0%	Atlanta GA, US (ATL)	8,398,234	↓ -15.1%	Hong Kong SAR, CN (HKG)	363,000	↓ -8.3%
Dallas/Fort Worth TX, US (DFW)	56,913	↓ -7.3%	Dallas/Fort Worth TX, US (DFW)	6,637,523	↑ 1.2%	Memphis TN, US (MEM)	329,489	↓ -13.1%
Atlanta GA, US (ATL)	56,891	↓ -27.8%	Chicago IL, US (ORD)	6,095,049	↓ -20.3%	Anchorage AK, US (ANC)	301,412	↑ 27.4%
Las Vegas NV, US (LAS)	51,487	↑ 22.2%	Denver CO, US (DEN)	5,982,477	↓ -1.0%	Incheon, KR (ICN)	254,390	↑ 15.2%
Denver CO, US (DEN)	50,614	↓ -5.6%	Los Angeles CA, US (LAX)	5,835,467	↓ -23.4%	Louisville KY, US (SDF)	230,907	↑ 1.8%
Los Angeles CA, US (LAX)	48,721	↓ -16.3%	Istanbul, TR (IST)	5,661,151	↑ 8.1%	Taipei, CN (TPE)	221,850	↑ 21.4%
Charlotte NC, US (CLT)	42,267	↓ -14.1%	London, GB (LHR)	5,341,644	↓ -21.1%	Los Angeles CA, US (LAX)	208,270	↑ 21.8%
Miami FL, US (MIA)	40,885	↑ 17.8%	New Delhi, IN (DEL)	5,238,965	↓ -0.8%	Shanghai, CN (PVG)	197,996	↓ -33.9%
Amsterdam, NL (AMS)	40,691	↓ -12.5%	Paris, FR (CDG)	5,227,412	↓ -19.1%	Miami FL, US (MIA)	196,103	↑ 3.1%
New York NY, US (JFK)	38,516	↓ -2.7%	Amsterdam, NL (AMS)	5,217,649	↓ -19.0%	Tokyo, JP (NRT)	194,948	↑ 18.9%
Istanbul, TR (IST)	37,578	↑ 3.8%	New York NY, US (JFK)	4,769,615	↓ -14.6%	Paris, FR (CDG)	190,164	↑ 10.9%
Newark NJ, US (EWR)	37,497	↓ -0.2%	Dubai, AE (DXB)	4,724,229	↓ -9.1%	Doha, QA (DOH)	190,088	↑ 0.2%
Paris, FR (CDG)	37,104	↓ -15.4%	Frankfurt, DE (FRA)	4,580,326	↓ -26.4%	Chicago IL, US (ORD)	181,293	↑ 21.2%
New Delhi, IN (DEL)	37,076	↓ -1.3%	Las Vegas NV, US (LAS)	4,580,140	↓ -0.5%	Frankfurt, DE (FRA)	165,858	↓ -5.1%
Frankfurt, DE (FRA)	36,565	↓ -20.8%	Miami FL, US (MIA)	4,455,699	↑ 17.6%	Singapore, SG (SIN)	153,400	↓ -10.7%

Note: Total scheduled and non-scheduled services

In terms of aircraft movements, the Top 15 airports reported a combined fall of -9.4%, compared to 2019. Ten out of the Top 15 airports were US airports. Chicago overtook Atlanta and ranked 1st, albeit with a decline of -22.0%. Atlanta became 3rd and recorded the largest decline of -27.8%. Three airports posted increases, i.e. Las Vegas, Miami, and Istanbul.

In terms of passengers, the Top 15 airports posted a total fall of -11.4%, compared to 2019. Over half of the Top 15 airports were US airports. Atlanta remained 1st with a decline of -15.1%. The largest fall was recorded by Frankfurt at -26.4%, followed by Los Angeles (-23.4%) and London Heathrow (-21.1%). Three airports posted increases, i.e. Miami, Istanbul, and Dallas/Fort Worth.

In terms of freight, the Top 15 airports reported an increase of +1.6%, compared to 2019. Ten out of the Top 15 airports posted increase, including seven with double-digit growth. Anchorage recorded the strongest growth at +27.4%, followed by Los Angeles at +21.8%. Shanghai recorded the largest fall of -33.9%, followed by Memphis at -13.1%.

(Source: ACI)

## TOP 15 AIRLINE GROUPS (Ranked by RPK)

MAY 2022: -15.3% (vs. 2019) in terms of RPK for the Top 15

In terms of RPK, the Top 15 airline groups accounted for 53.9% of the world's total RPK in May 2022 and declined by -15.3% compared to 2019. This decline was 16 percentage points smaller than the fall in world's average RPK.

With the continued ease of travel restrictions and pent-up demand, the Top 15 airlines saw smaller declines compared to the previous month. Due to the lingering lockdown, the major Chinese airlines were still out of the Top 15 list.

The U.S. airlines retained the Top 3 positions, with American at 1st, followed by United and Delta. Rankings of Southwest, Jetblue and Alaska, however, dropped slightly.

Airlines in Europe continued to show improvements supported by the surge in international travel, especially the Within Europe traffic. Both IAG and Lufthansa moved up 1 position from 4th to 5th.

Performance of airlines in the Middle East were relatively stable. Emirates maintained the 8th position, while Qatar dropped 1 position to 11th.

Singapore Airlines re-appeared in the Top 15 for the first time since the pandemic and ranked 14th with a decline of -36.2% in RPK from the 2019 level.

MAY 22

	RPK (billion)	Change over 2019	% Share of World Total	Cumulative % Share
American <sup>1</sup>	31.5	↓ -4.0%	6.8%	6.8%
United <sup>1</sup>	30.7	↓ -7.2%	6.6%	13.4%
Delta <sup>1</sup>	28.8	↓ -14.9%	6.2%	19.6%
IAG <sup>1</sup>	18.7	↓ -24.5%	4.0%	23.6%
Lufthansa Group <sup>1</sup>	17.7	↓ -32.5%	3.8%	27.5%
Southwest <sup>1</sup>	17.6	↓ -6.2%	3.8%	31.2%
Ryanair <sup>1</sup>	16.9	↑ 8.5%	3.6%	34.9%
Emirates <sup>1</sup>	15.7	↓ -22.0%	3.4%	38.3%
AF-KLM <sup>1</sup>	15.6	↓ -40.5%	3.3%	41.6%
Turkish Airlines <sup>1</sup>	14.1	↑ 15.8%	3.0%	44.6%
Qatar Airways <sup>1</sup>	12.7	↓ -1.3%	2.7%	47.4%
Air Canada <sup>1</sup>	8.1	↓ -31.1%	1.8%	49.1%
Jetblue Airways <sup>1</sup>	7.6	↑ 2.5%	1.6%	50.8%
Singapore Airlines Group <sup>1</sup>	7.5	↓ -36.2%	1.6%	52.4%
Alaska Airlines <sup>1</sup>	7.0	↓ -10.4%	1.5%	53.9%
<b>Top 15 Total RPKs</b>	<b>250 billion</b>	<b>↓ -15.3%</b>	<b>53.9%</b>	
<b>World Total RPKs</b>	<b>464 billion</b>	<b>↓ -31.3%</b>	<b>100.0%</b>	

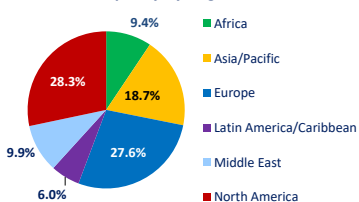
(Source: ICAO, airlines' websites)

Note: Total scheduled and non-scheduled services

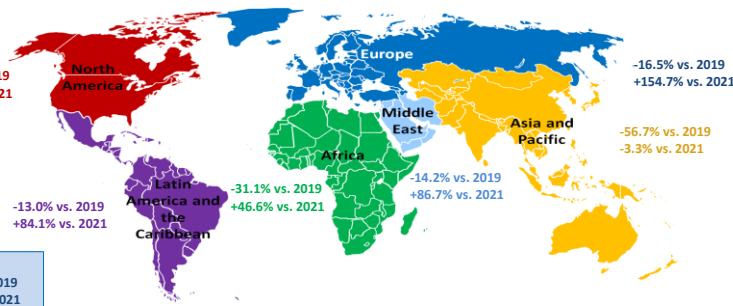
## CAPACITY BY REGION (ICAO Statistical Regions)

MAY 2022: -28.9% (vs. 2019) in terms of World ASK

% Share of Capacity by Region



World:  
-28.9% vs. 2019  
+52.8% vs. 2021



Worldwide capacity contracted by -28.9% in May 2022, compared to 2019. Airlines continued to increase capacity in tandem with the rebound in travel demand.

All regions posted smaller declines in capacity compared to the previous month. The most significant month-on-month improvement was recorded by the Middle East followed by Africa.

(Source: ICAO, IATA, OAG)

Note: Total scheduled services

\* Total Passengers \*\* Loaded and Unloaded Freight in Tonnes 1. ICAO estimates

ACRONYMS: ACI: Airports Council International; ASK: Available Seat-Kilometres; IATA: International Air Transport Association; CTK: Cargo Tonne-Kilometres; LF: Passenger Load Factor; OAG: Official Airline Guide; RPK: Revenue Passenger-Kilometres; UNWTO: World Tourism Organization; YoY: Year-on-year; YTD: Year-to-date.