



atech

GRUPO EMBRAER

OPMET SYSTEM OF BRAZIL

10/27/2020



**Departamento
de Controle do Espaço Aéreo**
Department of Airspace Control



CISCEA
Comissão de Implantação
do Sistema de Controle do Espaço Aéreo



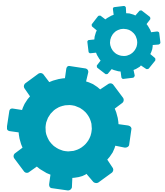
Themes



Who We Are



Functionalities



Architecture



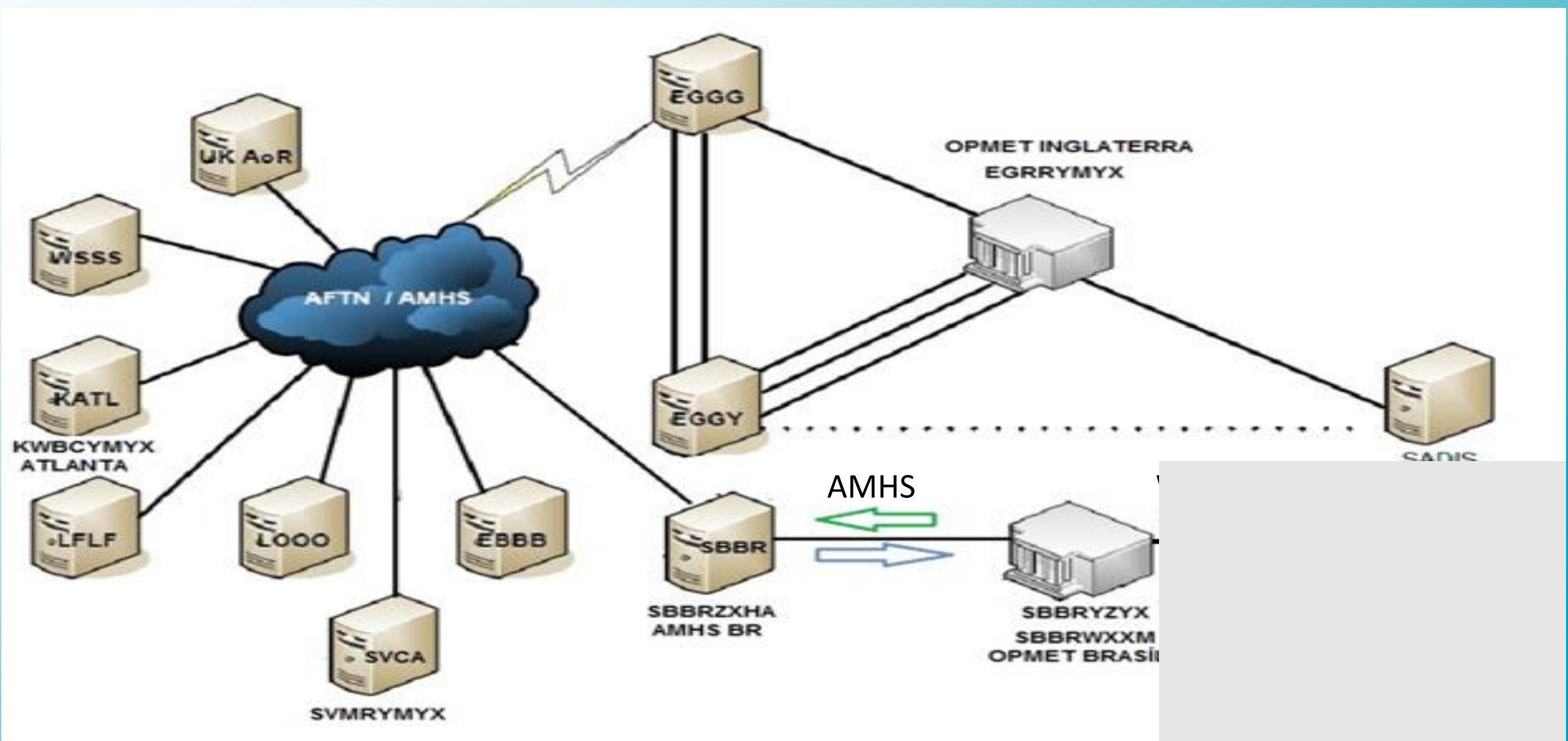
Benefits

Who We Are

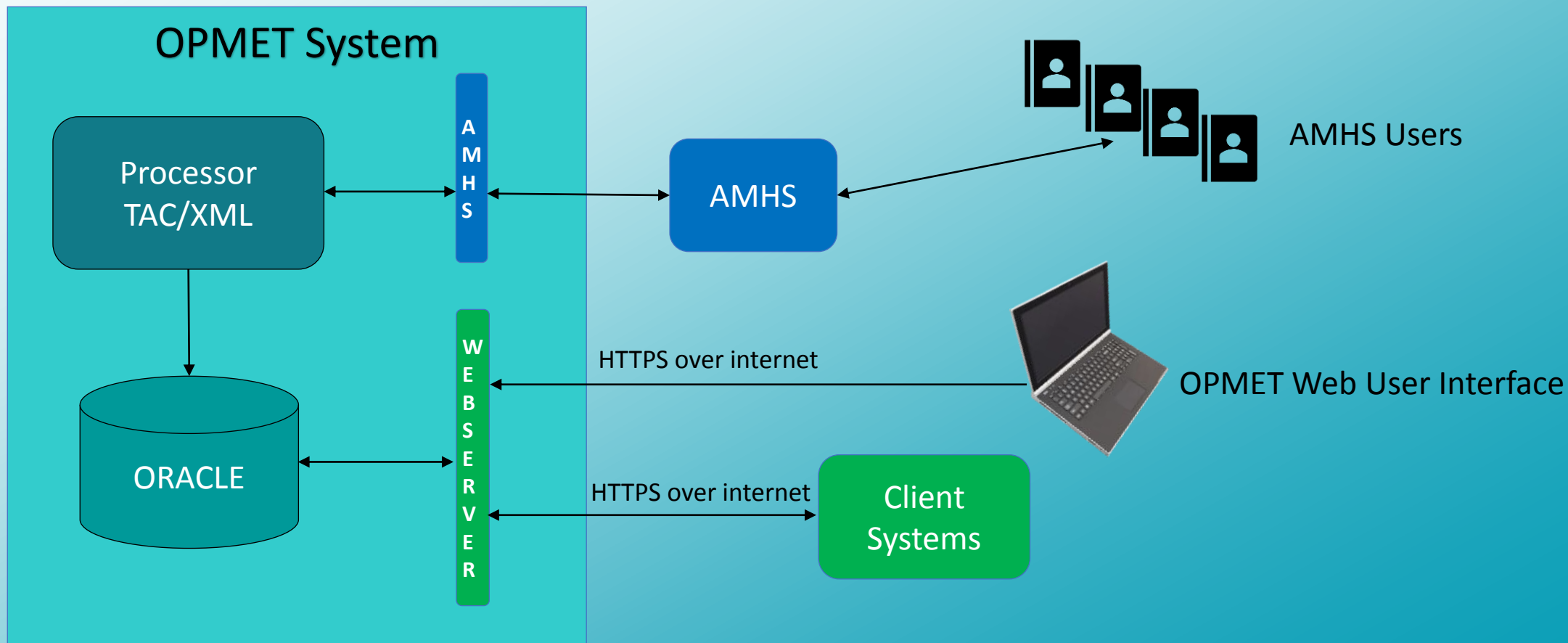


Banco Regional and International of the
CAR/SAM Region
RODB/IROG (SBBRYZYX)

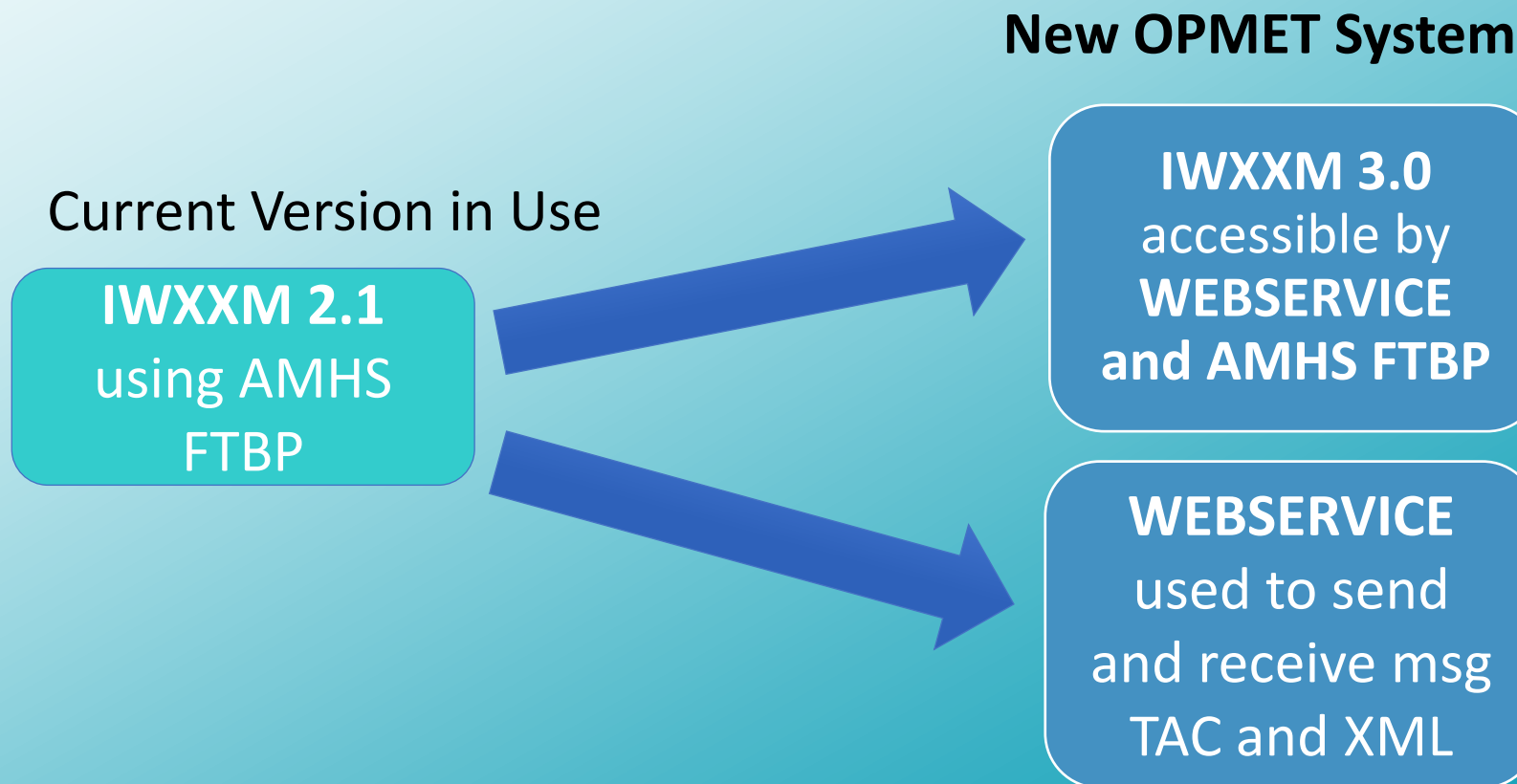
Architecture



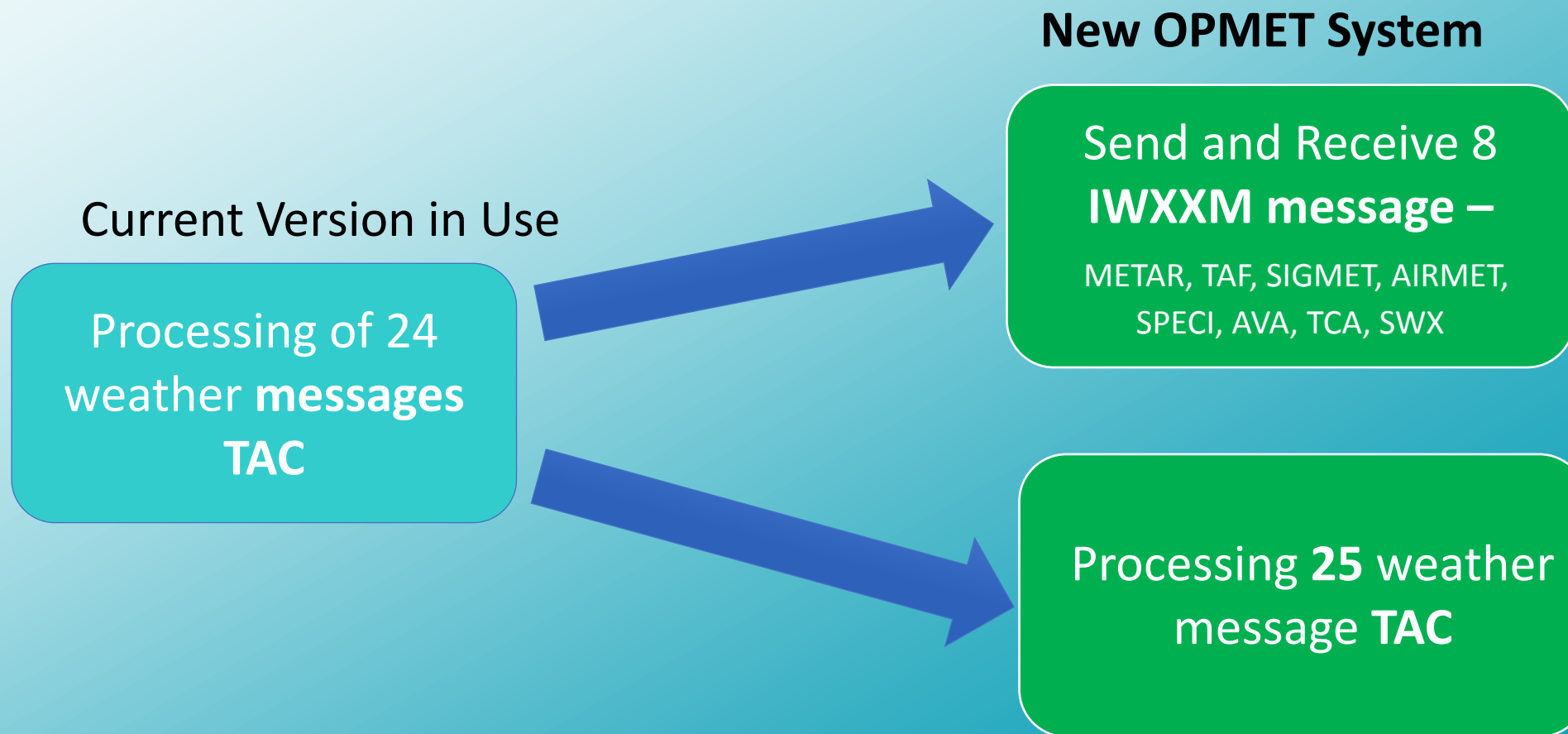
Architecture



Functionalities



Functionalities



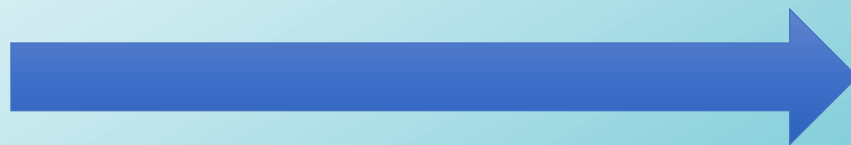
Functionalities

Current Version in Use

Validation of the date and aerodrome/FIR

New OPMET System

Validation of the complete message



The image displays two versions of the OPMET system interface. The left side shows the 'Current Version in Use', which is a form for editing meteorological observations. It includes sections for 'Tipo de Mensaje' (with a dropdown menu), 'Datos Iniciales', 'Datos Previstos', 'Grupo de Cambio', and 'Información Adicional'. The 'Datos Previstos' section contains fields for 'Viento*' (34008KT), 'Tiempo Significativo' (TSRA), 'Nube' (BKN017 FEW035CB), 'Temp. Mínima*' (15), 'Fecha y hora*' (2720), 'Temp. Máxima*' (23), and 'Fecha y hora*' (2714). The 'Edición de Registro de Observaciones EMS' form includes 'Registro de Observación' (with 'REGULAR' selected), 'Fecha*' (12/08/2020), 'Hora UTC*' (12:00), 'Localidad*' (BRASILIA / Pres. Juscelino Kubitschek, DF), 'Visibilidad' (2000), and 'Condición de Tiempo' (0 - NUBENS COBRINDO METADE OU MENOS DO CÉU DURANTE). The right side shows the 'New OPMET System', which includes a 'Presión' graph showing a pressure trend over time, a 'mensaje Codificado' section, and a 'Precipitación lluviosa' section. A large blue arrow points from the current system to the new system.

Benefits

- ✓ Compliance with IWXXM 3.0 model of the ICAO/WMO
- ✓ Improve quality of the data by validation of weather message fields.
- ✓ Ready to SWIM integration.
- ✓ Web Services available to speed up message Exchange.
- ✓ Ready to integrate with country of the CAR/SAM region – document of integration available (SICD)

Thank You!

CISCEA

Joanna Pivatelli - joanna@ciscea.gov.br

Martim Roberto Matschinske - martim@ciscea.gov.br

ATECH

Antonio de Oliveira Dias - antonio@atech.com.br

Kaori Yamaguchi - kyamaguchi@atech.com.br

Mariana Panzarini Marques - mmarques@atech.com.br



**Departamento
de Controle do Espaço Aéreo**
Department of Airspace Control



CISCEA
Comissão de Implantação
do Sistema de Controle do Espaço Aéreo



atech

GRUPO EMBRAER