



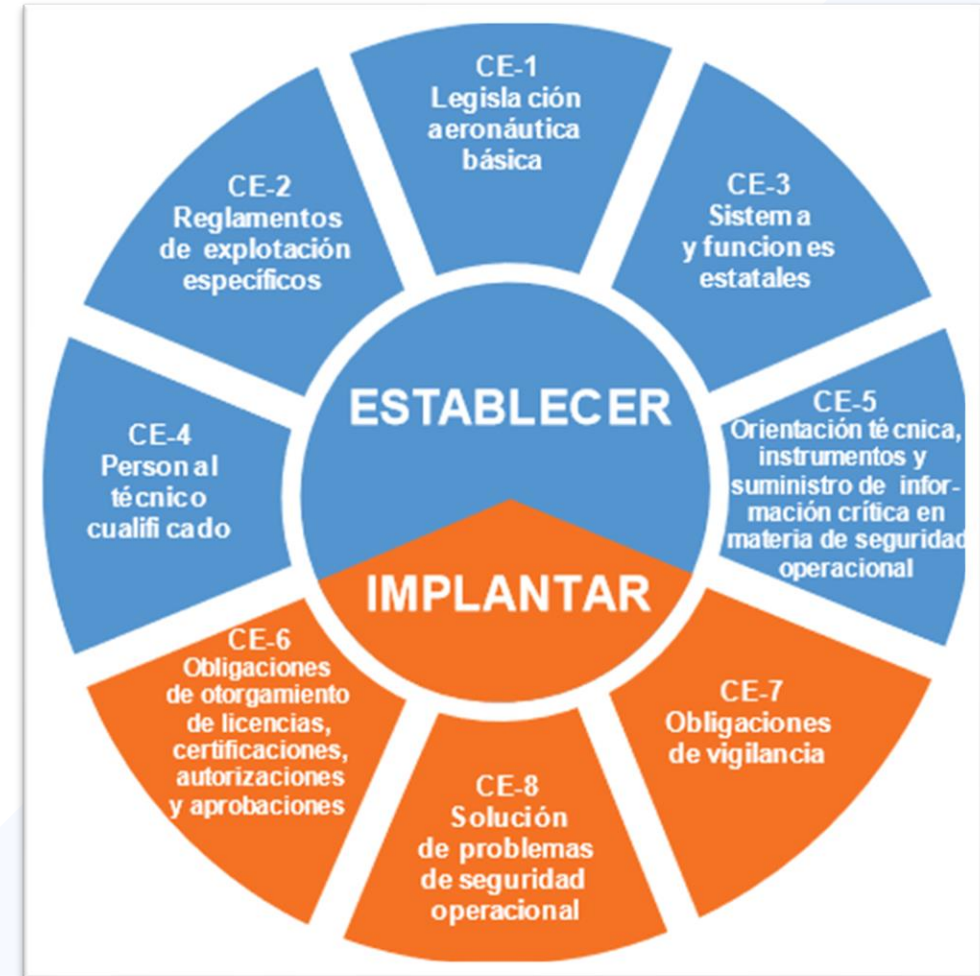
CAR/SAM Seminar/Workshop on Doc. 8126, Part I and the PANS-IM
Panama City, March 11 to 14

CONTENT

- 1) Introduction
- 2) USOAP ANS audit
- 3) AIS CAR/SAM Indicators
- 4) Critical PQ
- 5) Conclusions

INTRODUCTION

Effective Implementation (EI) measures the State's safety oversight capacity, calculated for each critical element, audit area, or overall measure. EI is expressed as a percentage.



USOAP ANS

USOAP

LEG
ORG
PEL
OPS
AIG
AGA
ANS

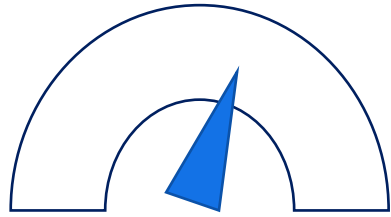
ATS
AIS
CNS
MAP
SAR
MET
IFP

Total PQs
12

Operacionales
6

Vigilancia
6

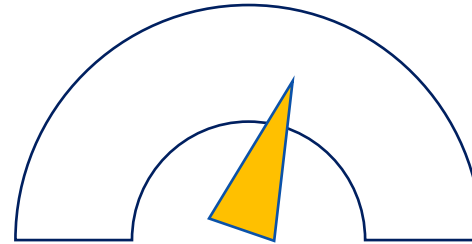
CAR/SAM AIS IE



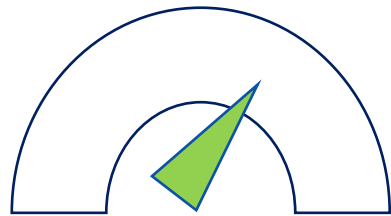
CAR AIS EI 52.63%



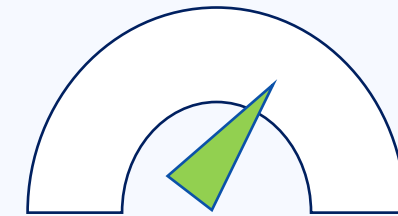
CAR AIS QA EI 15.79%



CAR/SAM AIS EI 57.88%

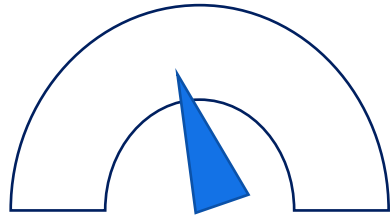


SAM AIS EI 61.48%

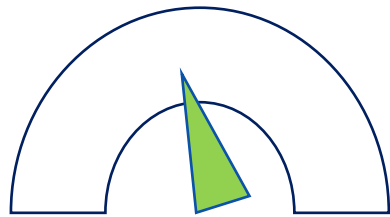


SAM AIS QA EI 53.85%

CAR/SAM AIS IE



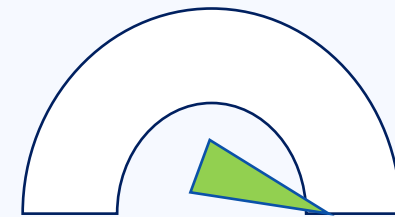
CAR AIS TRAINING
EI 47.37%



SAM AIS TRAINING
EI 46.15%

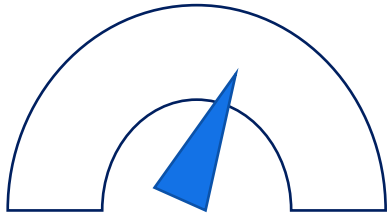


CAR AIS AIRAC EI 63.16%

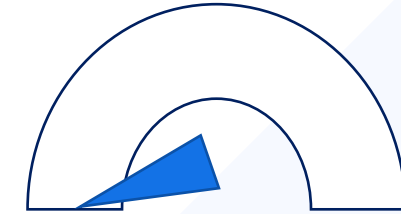


SAM AIS AIRAC EI 100%

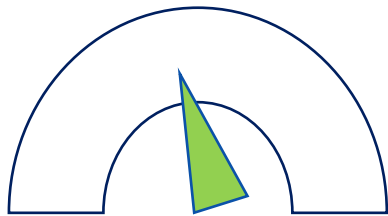
CAR/SAM AIS IE



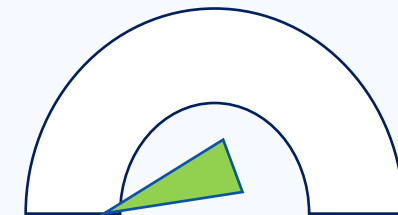
CAR DATA QUALITY EI
63.16%



CAR AIS FORMAL
ARRANGEMENTS EI 0%



SAM DATA QUALITY
EI 46.15%



SAM AIS FORMAL
ARRANGEMENTS EI 0%

AIS QA

7.267 ¿Does the State ensure that the AIS has implemented and maintained a quality management system (QMS)?

- 1) Review mechanism established to ensure effective implementation of the QMS.
- 2) Review implementation of requirements to measure, monitor and analyse processes to achieve a continuous improvement on the AIS.
- 3) Review implementation of user feedback system.
- 4) Verify that the implemented QMS encompasses the following processes: collection, processing (including verification and validation) and quality control.

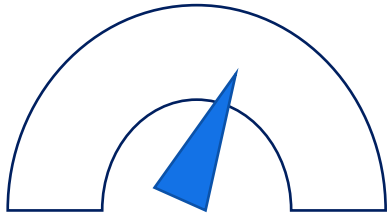


CAR AIS QA EI 15.79%

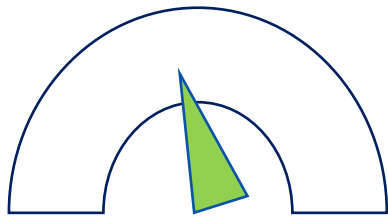


SAM AIS QA EI 53.85%

DATA QUALITY



CAR DATA QUALITY EI
63.16%

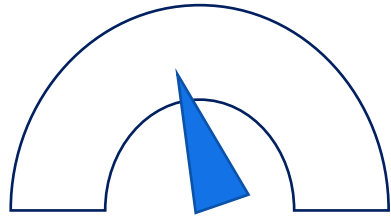


SAM DATA QUALITY
EI 46.15%

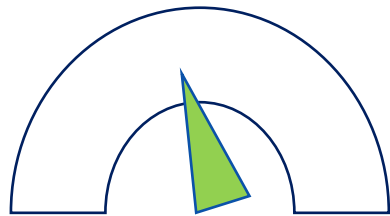
7.311 Does the State ensure that aeronautical data and information are provided in accordance with the data quality specifications?

- 1) Review surveillance tasks to ensure continuous compliance with the aeronautical data catalogue

PERSONNEL COMPETENCIES



CAR AIS TRAINING
EI 47.37%



SAM AIS TRAINING
EI 46.15%

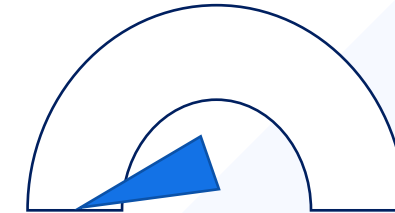
7.303 Does the State ensure that the technical staff of AIS and cartographic service providers' personnel possess the competencies required to perform the assigned functions and tasks?

- 1) Review mechanism established to ensure effective implementation.
- 2) Review documented training programme and verify if it requires initial and periodic assessments of the personnel to demonstrate the competencies.
- 3) Review method used by the State to confirm that training records are maintained.

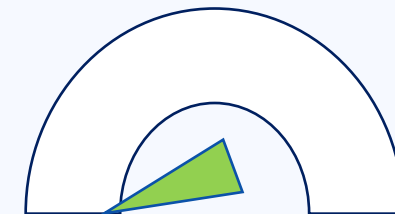
FORMAL ARRANGEMENTS

7.291 ¿Does the State ensure that formal arrangements are established between the originators of aeronautical data and information and the AIS on the timely and complete provision of aeronautical data and information?

- 1) Review mechanism established to ensure effective implementation.
- 2) Confirm that formal arrangements are in place and up-to-date with the data originators and consistent with the aeronautical data catalogue (including how the aeronautical data catalogue is made available and enforced).
- 3) Review arrangements with the oversight authorities and sample arrangement with an aerodrome authority or ATS provider.



CAR AIS FORMAL
ARRANGEMENTS EI 0%



SAM AIS FORMAL
ARRANGEMENTS EI 0%

CONCLUSIONS

1. The focus of the USOAP audit has changed to verify in deeper detail the implementation of Air Navigation Services, including AIS.
2. Regulatory authorities and AIS service providers should improve the implementation of AIS processes, including the quality system, formal arrangements, and data quality, among others.
3. The competence of personnel involved in providing services continues to be an area for improvement in the CAR/SAM regions.
4. Establishing formal arrangements with originators is a crucial area of improvement in the CAR/SAM regions.
5. The introduction of Doc 8126 and the PANS IM could modify the ANS protocols, requiring additional elements of evidence as part of USOAP audits.

CAR/SAM Seminar/Workshop on Doc. 8126, Part I and the PANS-IM
Panama City, March 11 to 14

Q & A?





iThanks!



SRVSOP

