



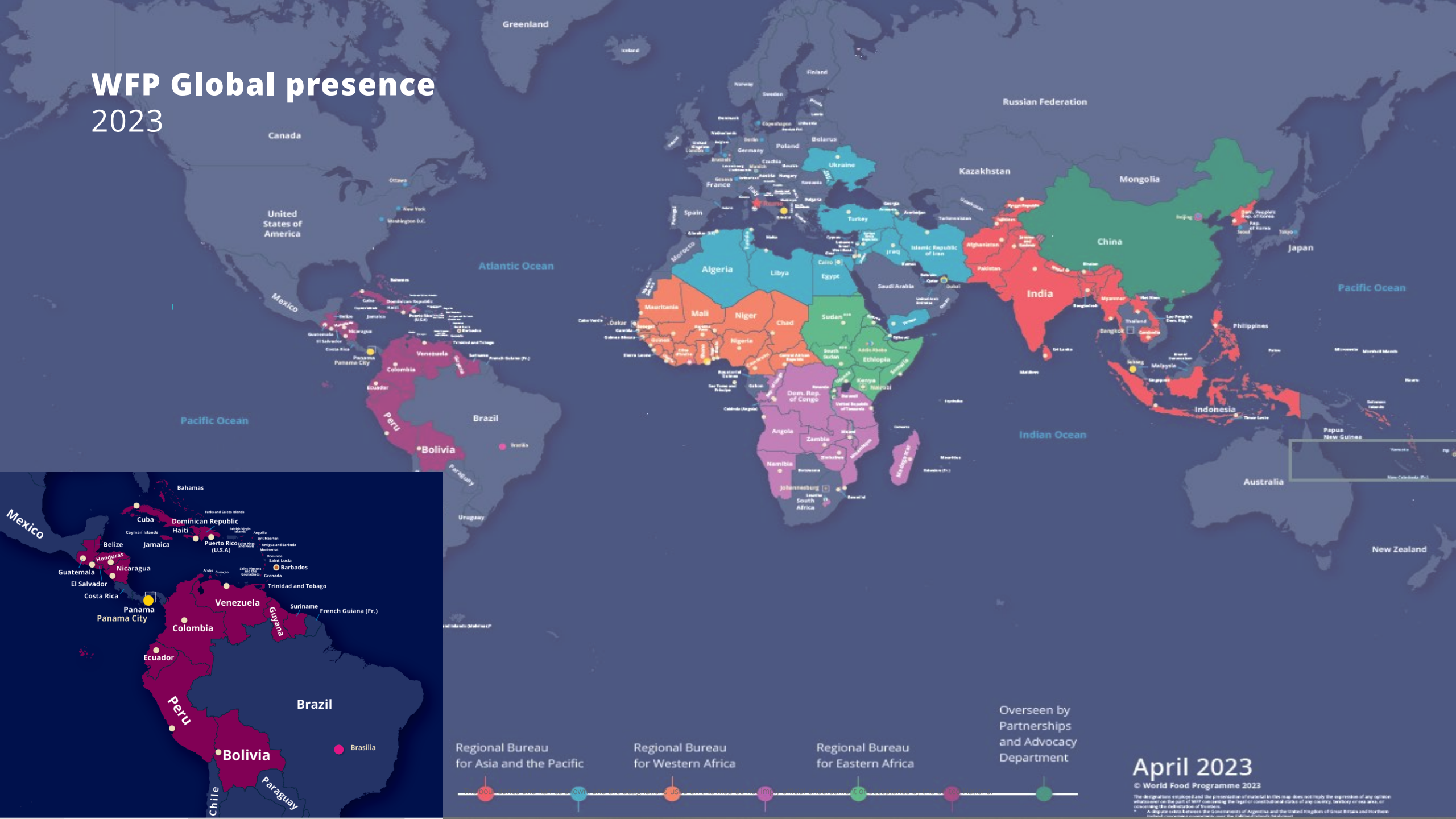
WFP – Disaster Emergency Response



World Food Programme



WFP Global presence 2023



Regional Bureau for Asia and the Pacific

Regional Bureau for Western Africa

Regional Bureau for Eastern Africa

Overseen by Partnerships and Advocacy Department

April 2023

© World Food Programme 2023
 The designations employed and the presentation of material in this map does not imply the expression of any opinion whatsoever on the part of WFP concerning the legal or constitutional status of any country, territory or sea area, or concerning the delimitation of frontiers.
 * A dispute exists between the Governments of Argentina and the United Kingdom of Great Britain and Northern Ireland concerning sovereignty over the Falkland Islands (Malvinas).

WFP Aviation presence 2023



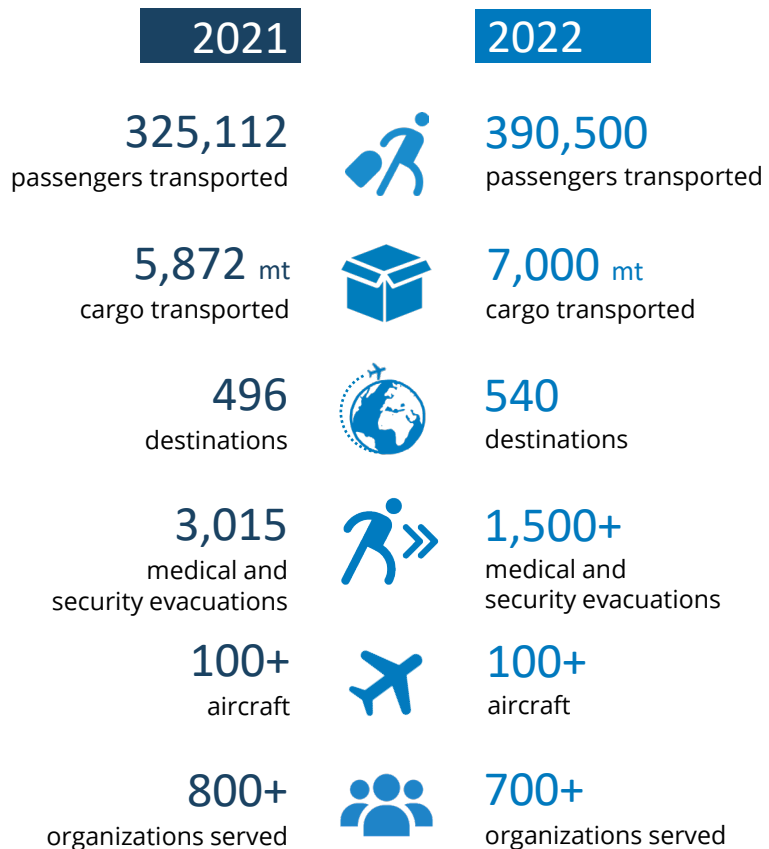
21 Aviation Field Operations

Services:

- passenger and light cargo air transport
- capacity for medical and security evacuation
- airport and airfield rehabilitation
- Strengthen Aviation Systems and Capacity at the Regional and National Levels

UNHAS – 2022 achievements

UNHAS in numbers



UNHAS-managed EU Humanitarian Aid Flight

Active in **DRC, Kenya, and Mali** since 2020
In **Burkina Faso** since November 2022 (temporary activation through mid-2023)
In **Madagascar** for 2022 cyclone response (temporary activation)

2022 figures



WFP Aviation Service in numbers (additional to UNHAS)



CARGO AIR-DROPPED IN 2022: South Sudan*



* As of March 2023, airdrop operations are active in South Sudan only.

EXAMPLE

In sudden-onset disasters that occur in remote locations or over a wide area, the Aviation Service will be expected to take urgent action to assess the situation in the crisis area and determine initial needs.

Most recent disaster emergency responses:

- Pakistan 2005,
- Haiti 2010,
- Caribbean, 2017
- Mozambique and Zimbabwe 2019
- Malawi 2023



Emergency response

WFP Aviation Service quickly adapts to the evolving demands of the humanitarian community and support the scale up of responses to increasing humanitarian needs of crises-affected populations

- Reinforcement of air operations with fleet augmentation and activation of airdrops
- Augmentation of flight frequencies
- Additional destinations served, often otherwise unreachable
- Launch of new dedicated UNHAS operations



COVID-19 response

WFP Global Passenger Air Service

Ensured the continued movement of health and humanitarian personnel and essential cargo into affected countries where safe and reliable commercial air travel options were not available.



34,724
passengers
transported



68
destinations
served



452
organizations
served

United Nations Humanitarian Air Service



56
COVID-19 medical
evacuations



28 mt
medical equipment transported including
COVID-19 samples and vaccines

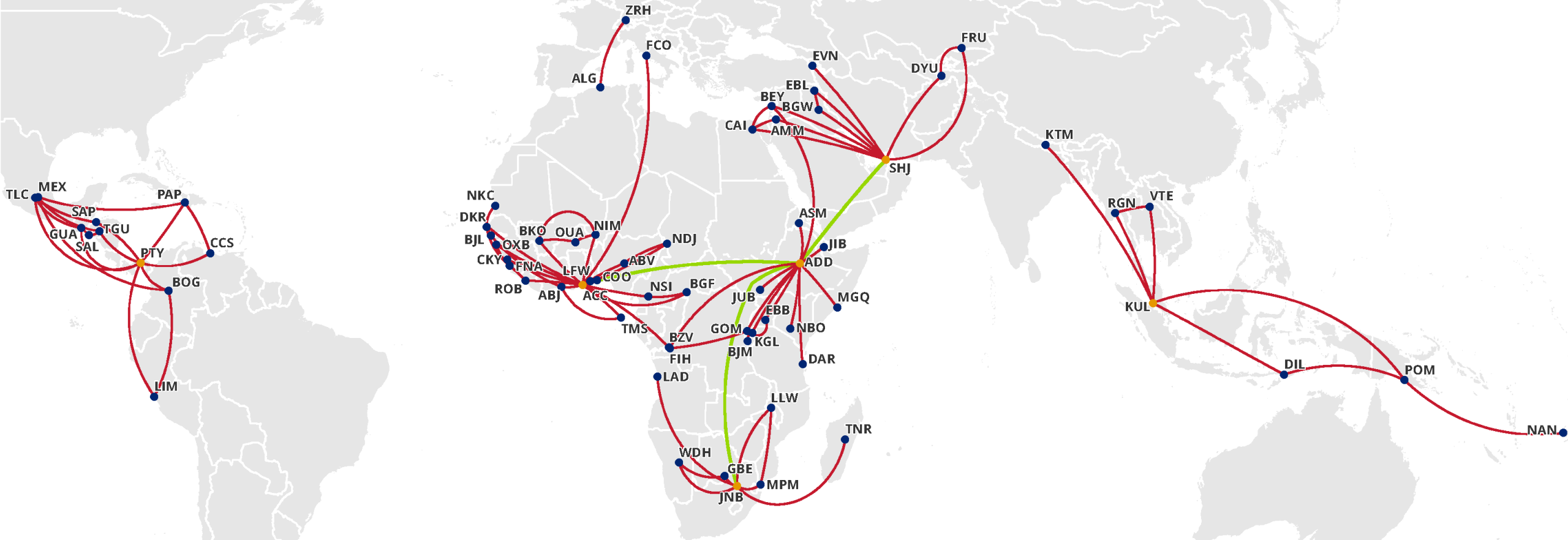
UN MEDEVAC Service

Ensured that health and humanitarian workers on the frontlines of the response could “stay and deliver”.



330
international
evacuations

WFP Global Passenger Air Service – Destinations served

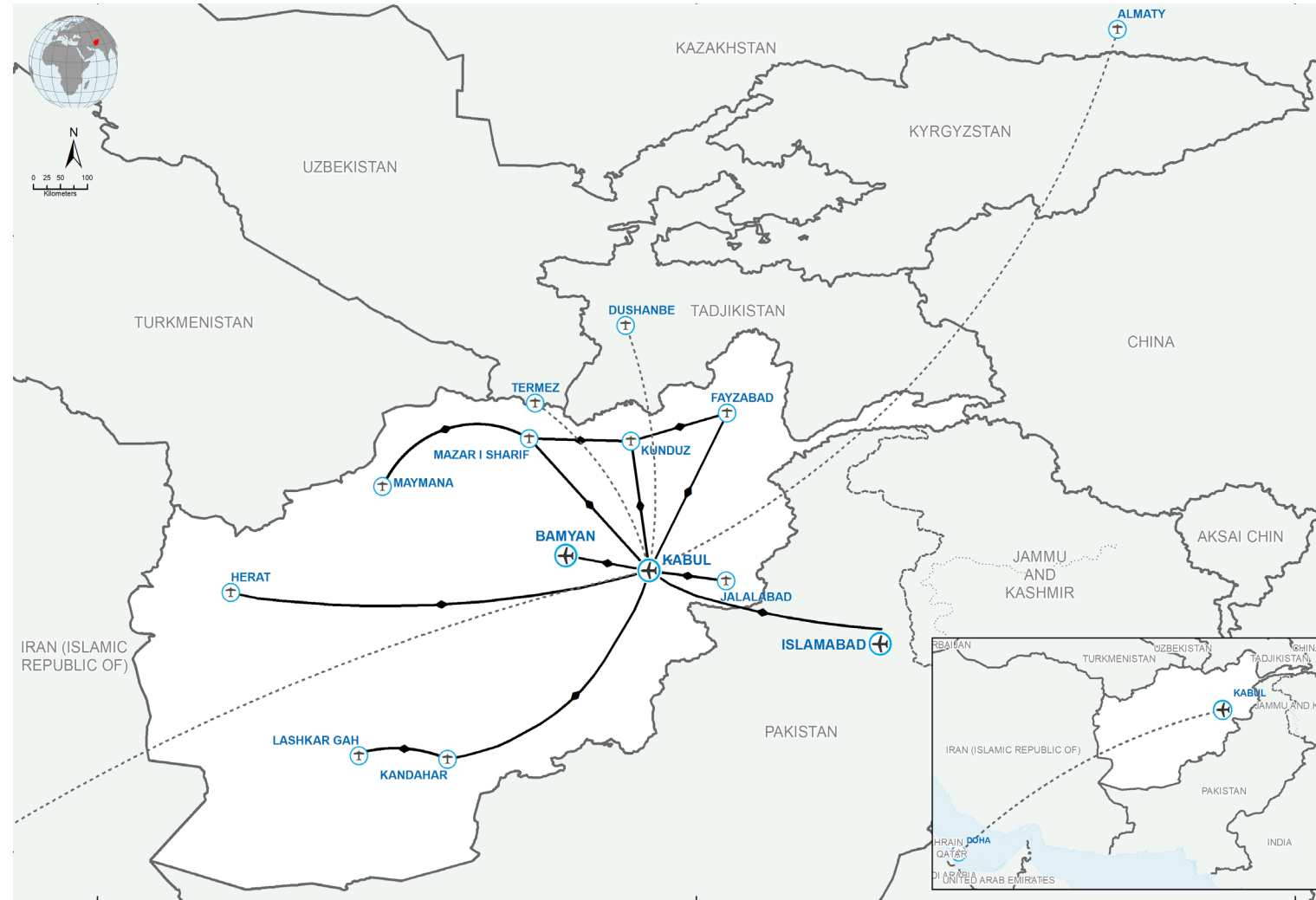


- Destinations
- Flying Hubs
- Flights between hubs
- Regional routes

Afghanistan 2021 Crisis

Response Timeline:

- 16/08: HKIA Security Incident;
- 22-23/08: Relocation to ISB;
- 28/08: Flights resumed from ISB to MZR & KDH;
- 12/09: Flights to Kabul.



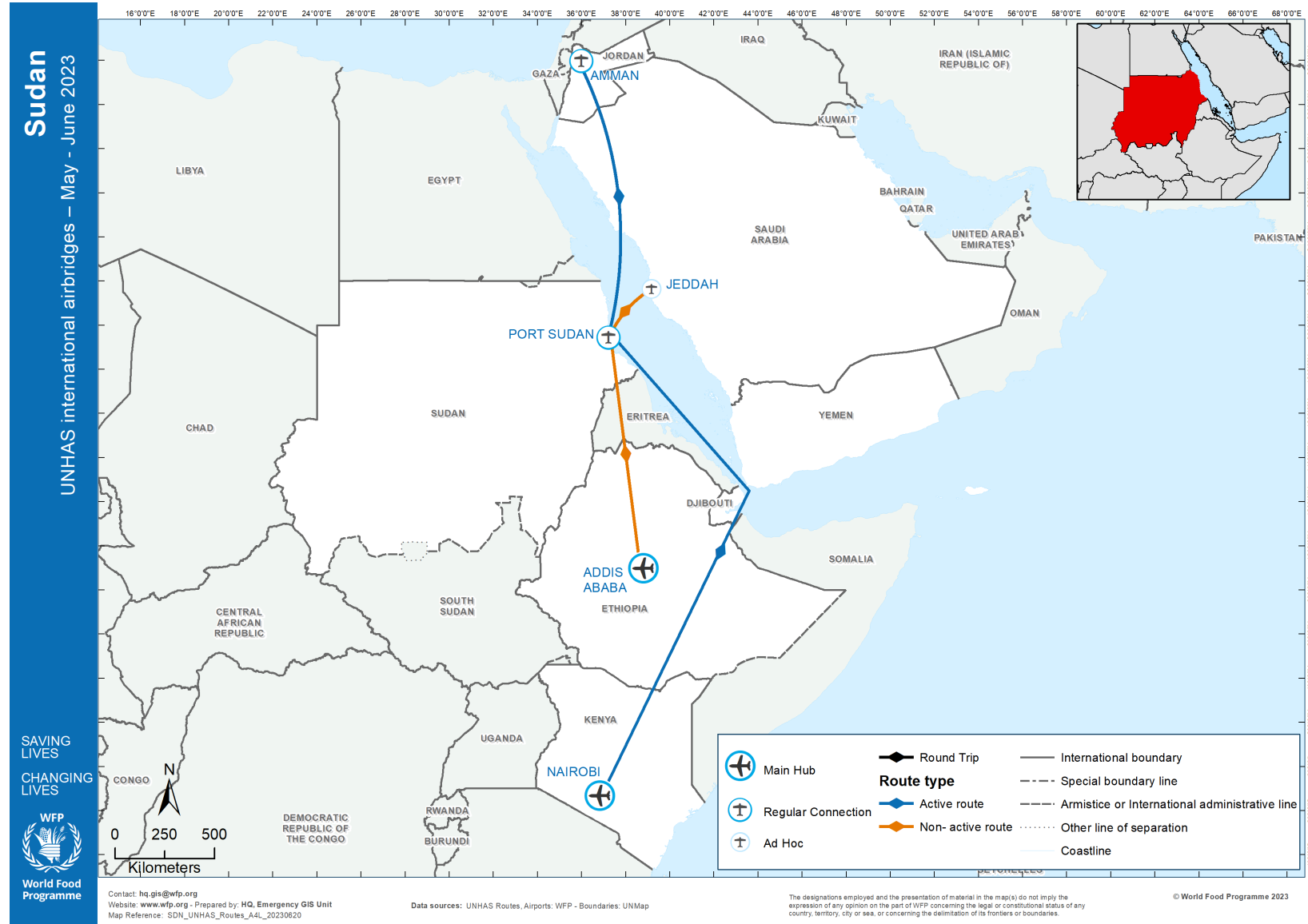
Date Created: 20 Oct 2021
 Contact: ha.grid@wfp.org
 Website: www.wfp.org
 Prepared by: HQ, Emergency GIS Unit
 Map Reference:
 AFG_UNHAS_UniqueRoutes_A44_20211020

Operational Base
 Regular Destination
 Round Trip
 Planned Route
 International boundaries
 Armistice or international administrative lines
 Other lines of separation

Data sources: WFP, UNGIS, GeoNames, OpenStreetMap contributors
 The designations employed and the presentation of material in this map(s) do not imply the expression of any opinion on the part of WFP concerning the legal or constitutional status of any country, territory, city or sea, concerning the delimitation of its frontiers or boundaries. Dotted line represents approximately the Line of Control between Jammu and Kashmir and India and Pakistan. The final status of Jammu and Kashmir has not yet been agreed upon by the parties.
 © World Food Programme

Sudan 2023 Crisis

- WFP Aviation Service worked in concerted effort with all actors involved to support **security evacuations** out of the country.
- UNHAS Sudan has launched **international airbridges** into Port Sudan, initially from **Jeddah** and **Addis Ababa**, and currently with a regular service twice a week from **Nairobi** and **Amman** with two dedicated aircraft.
- The UNHAS Sudan Operational Response Strategy envisages the progressive deployment of additional aircraft both for the maintenance of international connections and for the resumption of internal flights.



Challenges and Opportunities

Authorities

- Up to date information;
- Flight clearances and operational permits;
- Fees and taxes waiver;
- Relief cargo coordination and prioritization mechanisms;

Airport Operators

- Infrastructure damage and availability of services (ATC, GHA, Fuel etc.);
- Airside storage capacity and access;
 - Airspace and apron congestion;
- Airport services (immigration / customs / police) and terminal facilities;

Operations

- Increased workload and operational pressure;
- Accurate and timely updates;
 - Risk management;

Vision of the WFP Aviation service provision

WFP will implement effective mechanisms for collaborative interaction between the aviation and humanitarian stakeholders and promote aviation transformative assistance mechanisms to strengthen Regional and National aviation capacity.



THANK YOU



WFP Aviation Service