



ICAO

UNITING AVIATION

NO COUNTRY LEFT BEHIND



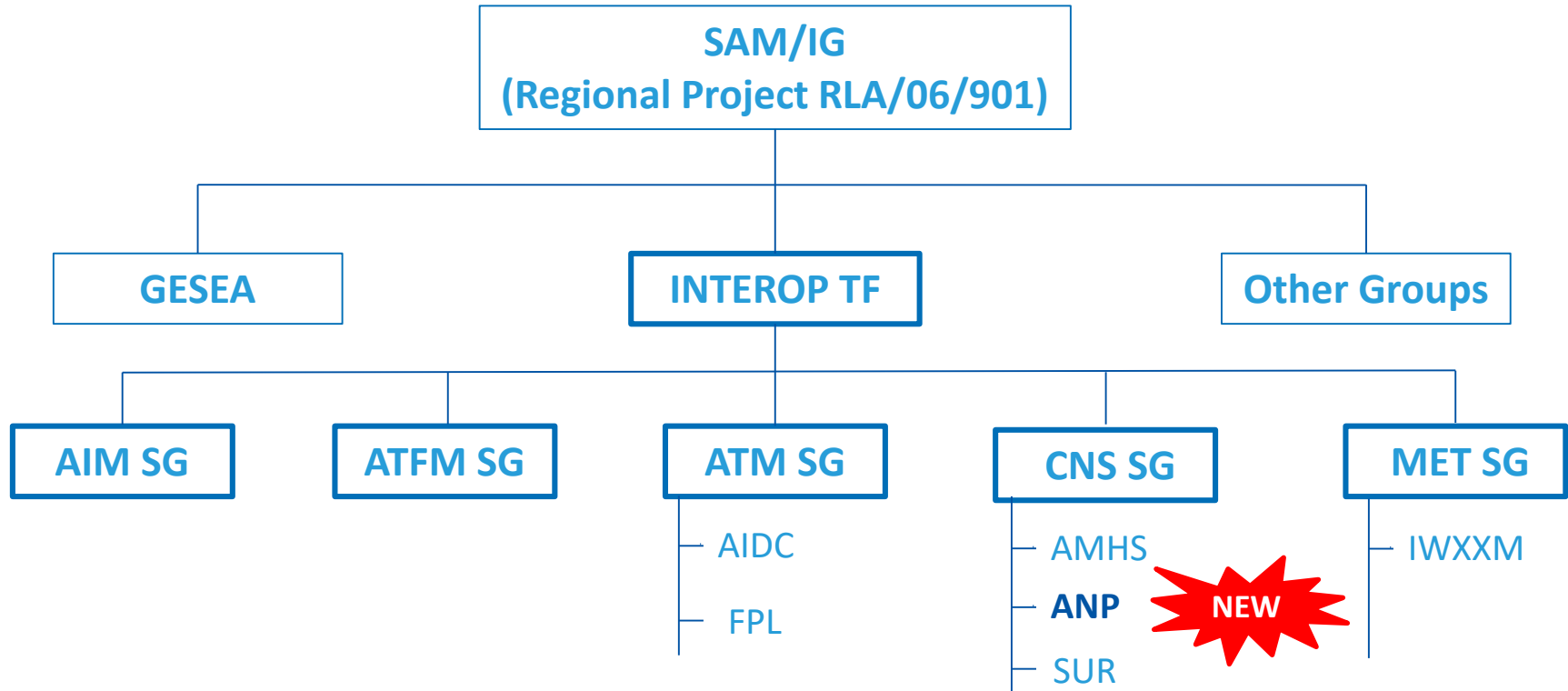
INTEROP TF/3

**Third Workshop/Meeting of the
Interoperability Task Force's Subgroups**



Tentative Schedule

HOUR (UTC)	Monday March 14, 2022	HOUR (UTC)	Tuesday March 15, 2022	HOUR (UTC)	Wednesday March 16, 2022	HOUR (UTC)	Friday March 17, 2022
13:45 14:00	Registration of participants	14:00 15:30	Meeting of the ATM/AIDC Subgroup	14:00 15:30	Meeting of the CNS/SUR Subgroup	14:00 15:30	Meeting of the CNS/ANP Subgroup
14:00 15:30	Report of the Rapporteurs						
15:30 15:45	Coffee Break	15:30 15:45	Coffee Break	15:30 15:45	Coffee Break	15:30 15:45	Coffee Break
15:45 17:00	Meeting of the ATM/FPL Subgroup	15:45 17:00	Meeting of the ATM/AIDC Subgroup	15:45 17:00	Meeting of the CNS/SUR Subgroup	15:45 17:00	Result of the subgroups work
17:00 17:45	Lunch Break	17:00 17:45	Lunch Break	17:00 17:45	Lunch Break	17:00 17:15	Closing session
17:45 19:00	Meeting of the ATM/FPL Subgroup	17:45 19:00	Meeting of the CNS/AMHS Subgroup	17:45 19:00	Meeting of the MET/IWXXM Subgroup		





ANP → eANP



ORGANIZACION DE AVIACION CIVIL INTERNACIONAL
INTERNATIONAL CIVIL AVIATION ORGANIZATION

LISTA / LIST NO. 6

GUIA DE ENCAMINAMIENTO AFTN
AFTN ROUTING DIRECTORY

REGION SAM
SAM REGION

DICIEMBRE
2004
DECEMBER

Example

Former AFTN Routig Directory

A DESTINO / DESTINATION	ORIGEN /ORIGIN						
	1	2	3	4	5	6	7
	MPPC	SAEZ	SBBR	SCSC	SEQU	SGAS	SKBO
A	KA	<u>sk</u>	SP sb	KA sv	SP sa	SP sk	SA sb SV sp
B	KA	<u>sk</u>	SB sp	KA sv	SP sa	SP sk	SB sa SV sp
C	KA	<u>sk</u>	SB sp	KA sv	SP sa	SP sk	SB sa SV sp
D	KA	<u>sk</u>	SB sp	GO le	SP sa	SP sk	SB sa SV sp
E	KA	<u>sk</u>	SB sp	LE sv	SP sa	<u>SL</u> <u>sp</u>	SB sa SV sp
F	KA	<u>sk</u>	SB sp	GO le	SP sa	SP sk	SB sa SV sp
G	KA	<u>sk</u>	SB sp	GO le	SP sa	SP sk	SB sa SV sp
H	KA	<u>sk</u>	SB sp	GO le	SP sa	SP sk	SB sa SV sp
K	KA	<u>sk</u>	SB sp	KA sv	SP sa	SP sk	SB sa SV sp
L	KA	<u>sk</u>	SB sp	LE sv	SP sa	<u>SL</u> <u>sp</u>	SB sa SV sp
MB	KA	<u>sk</u>	SB sp	KA sv	SP sa	SP sk	SB sa SV sp
MD	KA	<u>sk</u>	SB sp	KA sv	SP sa	SP sk	SB sa SV sp
MG	KA	<u>sk</u>	SB sp	KA sv	SP sa	SP sk	SB sa SV sp
MH	KA	<u>sk</u>	SB sp	KA sv	SP sa	SP sk	SB sa SV sp
MK	KA	<u>sk</u>	SB sp	KA sv	SP sa	SP sk	SB sa SV sp
MM	KA	<u>sk</u>	SB sp	KA sv	SP sa	SP sk	SB sa SV sp
MN	KA	<u>sk</u>	SB sp	KA sv	SP sa	SP sk	SB sa SV sp
MP	(N)	(n)	SB sp	KA sv	SP sa	SP sk	SB sa <u>MP</u> sp
MR	KA	<u>sk</u>	SB sp	KA sv	SP sa	SP sk	SB sa SV sp
MS	KA	<u>sk</u>	SB sp	KA sv	SP sa	SP sk	SB sa SV sp
MT	KA	<u>sk</u>	SB sp	KA sv	SP sa	SP sk	SB sa SV sp
MU	KA	<u>sk</u>	SB sp	KA sv	SP sa	SP sk	SB sa SV sp
MW	KA	<u>sk</u>	SB sp	KA sv	SP sa	SP sk	SB sa SV sp
MY	KA	<u>sk</u>	SB sp	KA sv	SP sa	SP sk	SB sa SV sp
MZ	KA	<u>sk</u>	SB sp	KA sv	SP sa	SP sk	SB sa SV sp
N	KA	<u>sk</u>	SP sb	KA sv	SP sa	SP sk	SA sb SV sp
O	KA	<u>sk</u>	SB sp	LE ka	SP sa	SP sk	SB sa SV sp
P	KA	<u>sk</u>	SP sc	KA sv	SP sa	SP sk	SB sa SV sp
R	KA	<u>sk</u>	SP sc	KA sv	SP sa	SP sk	SB sa SV sp
SA	KA	<u>sk</u>	(N) (n)	SA sp	SA sp	SP sk	SA sb <u>SP</u> <u>sv</u>
SB	KA	<u>sk</u>	SB sp	(N) (n)	SA sp	SP sk	SB sa <u>SB</u> sp
SC	KA	<u>sk</u>	SC sp	SA sp	(N) (n)	SP sk	SA sb SP sc
SE	<u>SA</u>	<u>ka</u>	SP sc	SP <u>sv</u>	SP sa	(N) (n)	SB sa SE sp
SG	KA	<u>sk</u>	SG sb	SG sa	SA sp	SP sk	(N) (n) SP sv
SK	<u>SA</u>	<u>ka</u>	SP sc	<u>SA</u> sp	SP sa	SK sk	SB sa (N) (n)
SL	KA	<u>sk</u>	SL sp	<u>SL</u> sp	SA sp	SP sk	SA sb SP sc
SM	KA	<u>sk</u>	SB sp	<u>SM</u> <u>sv</u>	SP sa	<u>SL</u> sp	SB sa SV sp
SO	KA	<u>sk</u>	SB sp	SO <u>sv</u>	SP sa	<u>SL</u> sp	SB sa SV sp



Example

Web Application

AMHS Management



View Operational Data

- ▶ Network Inventory
- ▶ Routing Directory
- ▶ Address Management
- ▶ User Capabilities Management
- ▶ Statistics
- ▶ Static Report
- ▶ COM Charts

Miscellaneous Functions

- ▶ Support Functions
- ▶ View Bulletin Board
- ▶ View AIRAC Cycle
- ▶ Operator Details
- ▶ Documentation Part of AMRD
- ▶ Path Function
- ▶ Extended Path Function
- ▶ Convert AFTN Address
- ▶ AFTN Country Code and AMHS PRMD
- ▶ View ANP Locations
- ▶ Regions
- ▶ Send E-Mail to User Groups
- ▶ Archived Data

AMHS MD Contacts

- ▶ Persons and Contacts

ATS Messaging Management



Welcome : ALMEIDA DA SILVA Francisco
You last logged in on : 23/02/2022 at 13:31 UTC
Bulletin Board last updated on : 25/02/2022

Current day in the AIRAC cycle : 2
AMC phase : Data Entry Phase
There are currently 0 COM Centre(s) locked

OPER.234 Day 1

Dear Colleagues,
All comm Centres have been unlocked. Changes for OPER.234 can now be proposed.

Best regards,
AMC Team
amc.operator@nats.co.uk

© Eurocontrol 2006 - Disclaimer
Powered by *Mileant Consulting*



View Operational Data

- ▶ Network Inventory
- ▶ **Routing Directory**
- ▶ Address Management
- ▶ User Capabilities Management
- ▶ Statistics
- ▶ Static Report
- ▶ COM Charts

Miscellaneous Functions

- ▶ Support Functions
- ▶ View Bulletin Board
- ▶ View AIRAC Cycle
- ▶ AMC Operator Details
- ▶ Documentation Part of AMRD
- ▶ Path Function
- ▶ Extended Path Function
- ▶ Convert AFTN Address
- ▶ AFTN Country Code and AMHS PRMD
- ▶ View ANP Locations
- ▶ Regions
- ▶ Send E-Mail to User Groups
- ▶ Archived Data

AMHS MD Contacts

- ▶ Persons and Contacts

ATS Messaging Management

Routing Directory

Operational Area [HELP]

AFTN Routing Table CIDIN Routing Table AMHS Routing Table

Region or Country: SAM | COM Centre: SOCA | Location: CAYENNE-FELIX-BOUË | Country: Guyane Francaise | AMHS Matrix: OPER.233 | SEARCH

MD Common Name: FRENCH GUIANA | Country-Name: XX | ADMD-Name: ICAO | PRMD-Name: FRENCH GUIANA | EXTENDED

Destination				Existing Main		Existing Alternate		Planned Main		Planned Alternate		Comments
C	ADMD	PRMD	O	COM	M	COM	M	COM	M	COM	M	
XX	ICAO	AG		SBBR	[]	(SVCA)	[]		[]		[]	APAC (AG)
XX	ICAO	AN		SBBR	[]	(SVCA)	[]		[]		[]	APAC (AN)
XX	ICAO	ANSA BH		SBBR	[]	(SVCA)	[]		[]		[]	EUR/NAT (LQ)
XX	ICAO	AUSTRALIA		SBBR	[]	(SVCA)	[]		[]		[]	APAC (Y)
XX	ICAO	AUSTRIA		SBBR	[]	(SVCA)	[]		[]		[]	EUR/NAT (LO)
XX	ICAO	AY		SBBR	[]	(SVCA)	[]		[]		[]	APAC (AY)
XX	ICAO	BANGLADESH		SBBR	[]	(SVCA)	[]		[]		[]	APAC (VG)
XX	ICAO	BELGIUM		SBBR	[]	(SVCA)	[]		[]		[]	EUR/NAT (EB)
XX	ICAO	BHUTAN		SBBR	[]	(SVCA)	[]		[]		[]	APAC (VQ)
XX	ICAO	BKPR		SBBR	[]	(SVCA)	[]		[]		[]	EUR/NAT (BK)
XX	ICAO	BOLIVIA		SBBR	[]	(SVCA)	[]		[]		[]	SAM (SL)
XX	ICAO	C		SBBR	[]	(SVCA)	[]		[]		[]	NAM (C)
XX	ICAO	CAMBODIA		SBBR	[]	(SVCA)	[]		[]		[]	APAC (VD)
XX	ICAO	CHINA		SBBR	[]	(SVCA)	[]		[]		[]	APAC (Z)

REPORT EXPORT



Example Routing AMHS_SOCA.xlsx - Excel

Almeida, Francisco Share

	A	B	C	D	E	F	G	H	I	J	K	L
1	1.1	AMHSRoutingTa	OPER232	27.01.2022 11:00:00	Operational		31.01.2022 15:58:45					
2	COM Centre	Matrix Version	Destination C	Destination ADMD	Destination PRMD	Destination O	Current Or Planned	Main	Main MTCU	Alternate	Alternate MTCU	Coordination For Alterna
3	SOCA	OPER.232	XX	ICAO	AG		C	SBBR	N	SVCA	N	Y
4	SOCA	OPER.232	XX	ICAO	AN		C	SBBR	N	SVCA	N	Y
5	SOCA	OPER.232	XX	ICAO	ANSA BH		C	SBBR	N	SVCA	N	Y
6	SOCA	OPER.232	XX	ICAO	AUSTRALIA		C	SBBR	N	SVCA	N	Y
7	SOCA	OPER.232	XX	ICAO	AUSTRIA		C	SBBR	N	SVCA	N	Y
8	SOCA	OPER.232	XX	ICAO	AY		C	SBBR	N	SVCA	N	Y
9	SOCA	OPER.232	XX	ICAO	BANGLADESH		C	SBBR	N	SVCA	N	Y
10	SOCA	OPER.232	XX	ICAO	BELGIUM		C	SBBR	N	SVCA	N	Y
11	SOCA	OPER.232	XX	ICAO	BHUTAN		C	SBBR	N	SVCA	N	Y
12	SOCA	OPER.232	XX	ICAO	BKPR		C	SBBR	N	SVCA	N	Y
13	SOCA	OPER.232	XX	ICAO	BOLIVIA		C	SBBR	N	SVCA	N	Y
14	SOCA	OPER.232	XX	ICAO	C		C	SBBR	N	SVCA	N	Y
15	SOCA	OPER.232	XX	ICAO	CAMBODIA		C	SBBR	N	SVCA	N	Y
16	SOCA	OPER.232	XX	ICAO	CHINA		C	SBBR	N	SVCA	N	Y
17	SOCA	OPER.232	XX	ICAO	COLOMBIA		C	SBBR	N	SVCA	N	Y
18	SOCA	OPER.232	XX	ICAO	CROATIA		C	SBBR	N	SVCA	N	Y
19	SOCA	OPER.232	XX	ICAO	CURACAO		C	SBBR	N	SVCA	N	Y
20	SOCA	OPER.232	XX	ICAO	CYPRUS		C	SBBR	N	SVCA	N	Y
21	SOCA	OPER.232	XX	ICAO	DA		C	SBBR	N	SVCA	N	Y
22	SOCA	OPER.232	XX	ICAO	DB		C	SBBR	N	SVCA	N	Y

Sheet1



Example Frequency Finder (software)



Frequency Finder

File Edit View Insert Format Records Scripts Window Help

Regional Office: **FF-2020-3** Pro 16.0.4 Active Region ==SAM COM list 3 for VHF COM air/ground frequency assignments in the band 117.975 - 137 MHz

User Manual Sync Manual ST

Start Home Global COM list 3 New or Mod or Del Freq. TEST FREQUENCY Calculation results Upload

SAM COM list 3 SELECT Single Station Export COM list 3 Special Functions

FM DU D total found 30408 3906 Query

10.23.40.136 Connected https://frequency

MOD	Key	Region	Frequency	Country	Location	Latitude	Longitude	DOC	FIR Sector	PolyID	Extended Range	Cat	Stat	Remarks
R		SAM	121.300	Uruguay	URG MONTEVIDEO CARRASCO INTL	34D50'00" S	056D01'00" W	APP-I C-75/250				NAT		No implementada.
R		SAM	123.200	Uruguay	URG MONTEVIDEO CARRASCO INTL	34D50'00" S	056D01'00" W	APP-I C-75/250				ICAO	OP	
R		SAM	121.800	Uruguay	URG MONTEVIDEO CARRASCO INTL	34D50'02" S	056D01'41" W	SMC C-5/1				ICAO		
R		SAM	118.100	Uruguay	URG MONTEVIDEO CARRASCO INTL	34D50'02" S	056D01'41" W	TWR C-25/40				ICAO		
R		SAM	118.500	Uruguay	URG PANDO	34D44'00" S	055D57'00" W	TWR C-25/40				NAT	OP	F.A.U.
R		SAM	126.180	Uruguay	URG PANDO	34D44'00" S	055D57'00" W	TWR C-25/40				NAT	OP	F.A.U.; GP
R		SAM	122.100	Uruguay	URG PAYSANDU	32D21'00" S	058D04'00" W	AFIS C-25/40				NAT	OP	
R		SAM	118.200	Uruguay	URG PAYSANDU	32D21'00" S	058D04'00" W	TWR C-25/40				NAT		
R		SAM	118.700	Uruguay	URG PUNTA DEL ESTE	34D51'00" S	055D36'00" W	TWR C-25/40				ICAO	OP	AFIS
R		SAM	122.100	Uruguay	URG RIVERA	30D58'00" S	055D28'00" W	AFIS C-25/40				NAT	OP	
R		SAM	118.000	Uruguay	URG RIVERA	30D58'00" S	055D28'00" W	TWR C-25/40				ICAO		
R		SAM	126.300	Uruguay	URG SALTO	31D26'05" S	057D59'03" W	ACC-U C-261/450			ER-URU-1	NAT		Freq's desplazadas 3 e
R		SAM	122.100	Uruguay	URG SALTO	31D26'00" S	057D59'00" W	AFIS C-25/40				NAT	OP	
R		SAM	119.800	Uruguay	URG SALTO	31D26'00" S	057D59'00" W	APP-L C-50/120				ICAO		
R		SAM	118.800	Uruguay	URG SALTO	31D26'00" S	057D59'00" W	TWR C-25/40				ICAO		
R		SAM	128.500	Uruguay	URG TACUAREMBO	31D45'01" S	055D55'26" W	ACC-U C-261/450			ER-URU-02	ICAO		Freq desplazada 2 esta
R		SAM	122.100	Uruguay	URG TACUAREMBO	31D45'00" S	055D55'00" W	AFIS C-25/40				NAT	OP	
R		SAM	132.050	Venezuela	VEN ACARIGUA	09D33'00" N	069D13'00" W	ATIS B-260/450				NAT	OP	
R		SAM	121.900	Venezuela	VEN ACARIGUA	09D33'00" N	069D13'00" W	SMC C-5/1				NAT	OP	
R		SAM	118.850	Venezuela	VEN ACARIGUA	09D33'02" N	069D13'57" W	TWR C-25/40				NAT	OP	
R		SAM	119.200	Venezuela	VEN AEROPUERTO CARACAS	10D17'09" N	066D49'05" W	APP-L C-50/120				NAT	OP	

VHF COM Frequency Assignment Planning To scroll: Ctrl-up / down



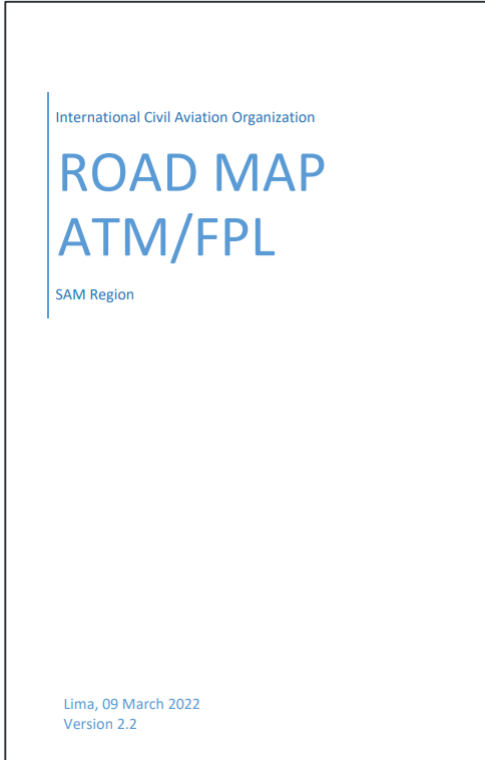
ICAO

UNITING AVIATION

NO COUNTRY LEFT BEHIND



ATM/FPL SUBGROUP



English:

https://www.icao.int/SAM/Documents/2022-RLA06901-GTINTEROP3/Roadmap%20ATM_FPL%20rev%2009%20Mar%202022%20VERSION%202.2.pdf

Spanish:

<https://www.icao.int/SAM/Documents/2022-RLA06901-GTINTEROP3/Hoja%20de%20Ruta%20rev%2009%20Mar%202022%20-%20ACTUALIZADO%20VERSION%202.2.pdf>



North American
Central American
and Caribbean
(NACC) Office
Mexico City

South American
(SAM) Office
Lima

ICAO
Headquarters
Montréal

Western and
Central African
(WACAF) Office
Dakar

European and
North Atlantic
(EUR/NAT) Office
Paris

Middle East
(MID) Office
Cairo

Eastern and
Southern African
(ESAF) Office
Nairobi

Asia and Pacific
(APAC) Sub-office
Beijing

Asia and Pacific
(APAC) Office
Bangkok



THANKS

falmeida@icao.int