



ICAO

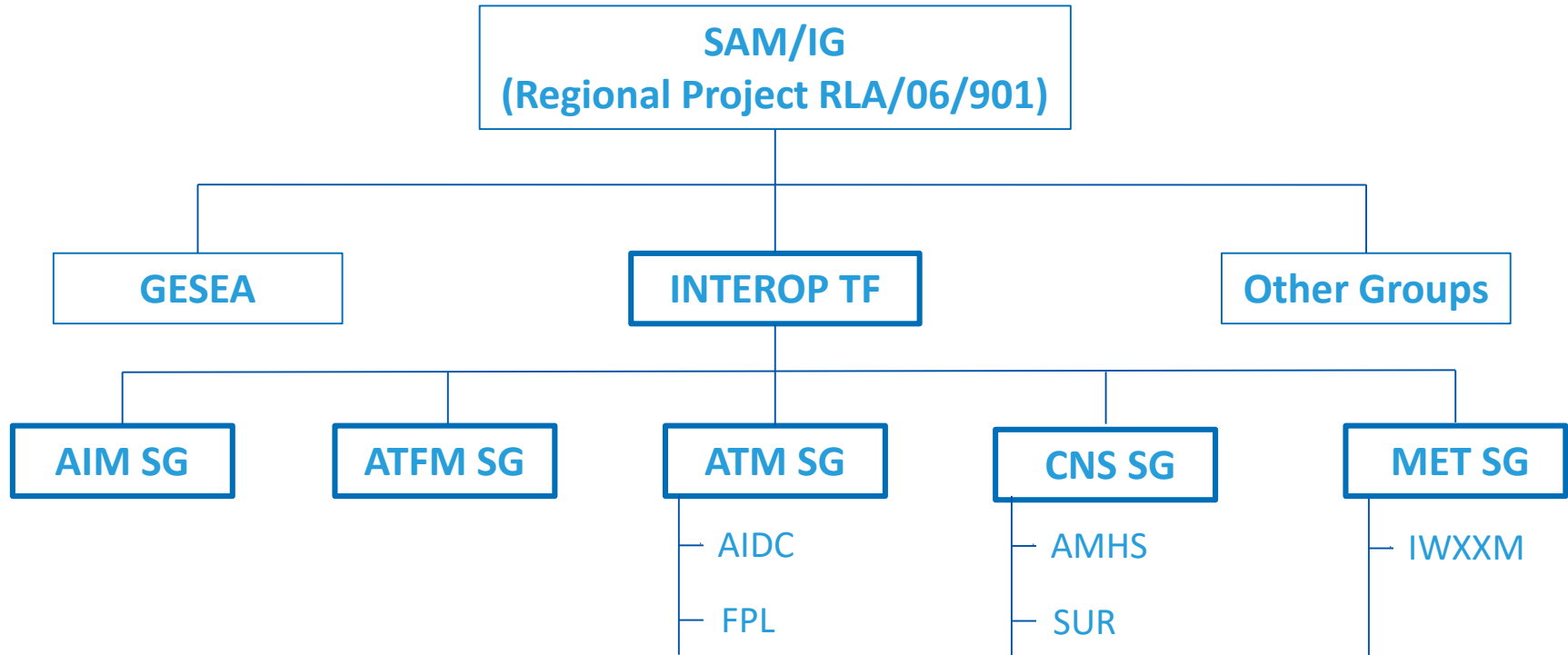
UNITING AVIATION

NO COUNTRY LEFT BEHIND



## INTEROP TF/2

**Second Workshop/Meeting of the  
Interoperability Task Force's Subgroups**





ICAO

UNITING AVIATION

NO COUNTRY LEFT BEHIND



# ATM/FPL SUBGROUP



International Civil Aviation Organization

# ATM/FPL ROADMAP

SAM Region

Lima, October 2020  
Version 1.1

English:

[https://www.icao.int/SAM/Documents/2020-RLA06901-SAMIG25/aSAMIG\\_25%20FINAL%20REPORT.pdf](https://www.icao.int/SAM/Documents/2020-RLA06901-SAMIG25/aSAMIG_25%20FINAL%20REPORT.pdf)

Spanish:

[https://www.icao.int/SAM/Documents/2020-RLA06901-SAMIG25/SAMIG\\_25%20InformeFinal.pdf](https://www.icao.int/SAM/Documents/2020-RLA06901-SAMIG25/SAMIG_25%20InformeFinal.pdf)



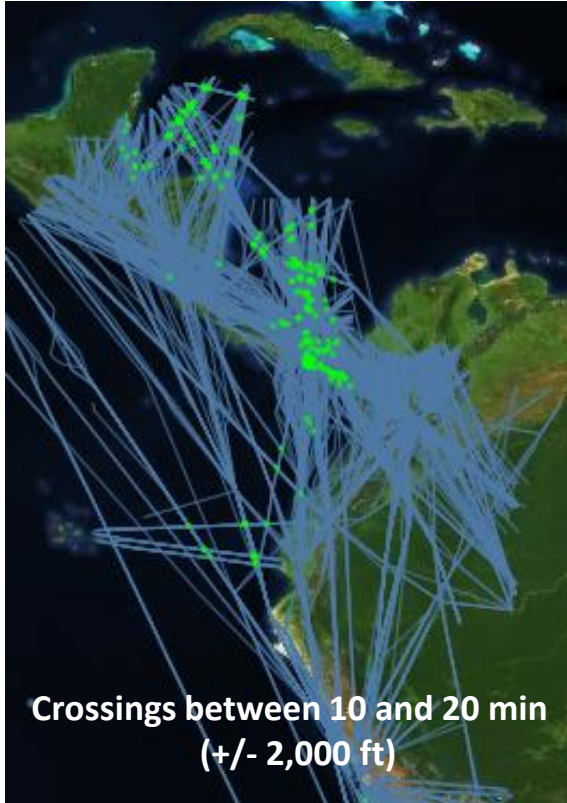
ICAO

UNITING AVIATION

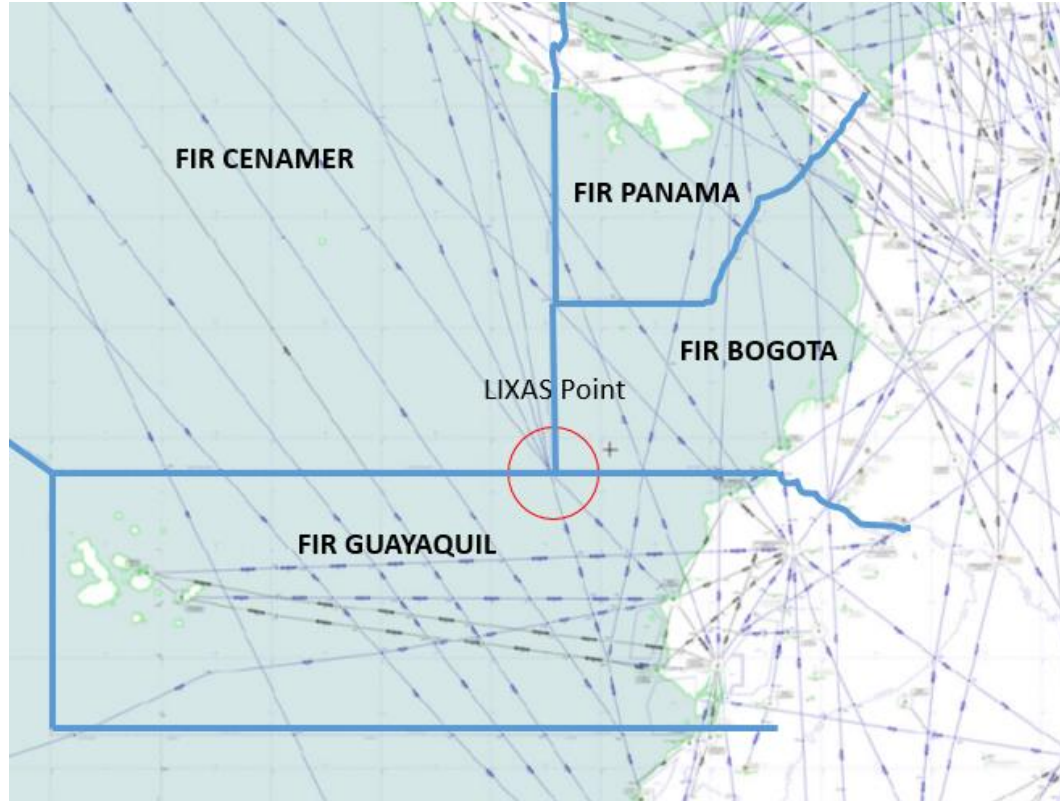
NO COUNTRY LEFT BEHIND



# ATM/AIDC SUBGROUP









*Argentina*

Center A	Center B
<b>Córdoba ACC</b>	<b>Iquique ACC</b>
	La Paz ACC
	Ezeiza ACC
	Mendoza ACC
	Resistencia ACC
Resistencia ACC	Asuncion ACC
	Curitiba ACC
	Ezeiza ACC
	Montevideo ACC
<b>Ezeiza ACC</b>	<b>Comodoro Rivadavia ACC</b>
	Mendoza ACC
	Puerto Montt ACC
	Johannesburg ACC
	Montevideo ACC
Mendoza ACC	Santiago ACC
Comodoro Rivadavia ACC	Punta Arenas ACC
	Puerto Montt ACC



## *Bolivia*

Center A	Center B
<b>Cochabamba ACC</b>	Amazonic ACC
	Asuncion ACC
	Curitiba ACC
	Cordoba ACC
	Lima ACC
	Iquique ACC



*Brasil*

Center A	Center B
<b>Amazonic ACC</b>	Brasilia ACC
	Bogotá ACC
	Cayenne ACC
	Curitiba ACC
	Georgetown ACC
	La Paz ACC
	<b>Lima ACC</b>
	Maiquetia ACC
	Paramaribo ACC
	Recife ACC
	Atlántico ACC

Center A	Center B
Atlantic ACC	Amazonic ACC
	Cayenne ACC
	Curitiba ACC
	Dakar ACC
	Curitiba ACC
	Johannesburg ACC
	Luanda ACC
	Montevideo ACC
	Recife ACC



## Brasil

Center A	Center B
<b>Curitiba ACC</b>	Amazonic ACC
	<b>Asunción ACC</b>
	Atlantic ACC
	Brasilia ACC
	La Paz ACC
	Montevideo ACC
	Recife ACC
	Resistencia ACC

Center A	Center B
Recife ACC	Amazonic ACC
	Atlantic ACC
	Brasilia ACC
	Curitiba ACC



*Chile*

Center A	Center B
Santiago ACC	Iquique ACC
	Lima ACC
	Mendoza ACC
	Puerto Montt ACC
<b>Iquique ACC</b>	<b>Córdoba ACC</b>
	La Paz ACC
	Lima ACC
	Santiago ACC

Center A	Center B
Puerto Montt ACC	Santiago ACC
	Punta Arenas ACC
	Ezeiza ACC
	Comodoro Rivadavia ACC
Punta Arenas ACC	Puerto Montt ACC
	Comodoro Rivadavia ACC



### Colombia

Center A	Center B
<b>Bogota ACC</b>	Amazonic ACC
	CENAMER
	Guayaquil ACC
	Lima ACC
	<b>Maiquetia ACC</b>
	Panama ACC
	Barranquilla ACC
<b>Barranquilla ACC</b>	<b>Maiquetia ACC</b>
	Panama ACC
	Bogota ACC
	Kingston ACC
	Curacao ACC

Center A	Center B
Rio Negro APP	Panama ACC
Cali APP	Panama ACC



## *Ecuador*

Center A	Center B
Guayaquil ACC	Bogota ACC
	Lima ACC
	CENAMER ACC



## *France – French Guiana*

<b>Center A</b>	<b>Center B</b>
Cayenne ACC	Amazonic ACC
	Atlantic ACC
	Paramaribo ACC
	Piarco ACC
	Dakar ACC



## *Guyana*

<b>Center A</b>	<b>Center B</b>
Georgetown ACC	Amazonic ACC
	Piarco ACC
	Maiquetia ACC
	Paramaribo ACC



## *Panama*

Center A	Center B
Panama ACC	Bogota ACC
	Barranquilla ACC
	CENAMER ACC
	Cali APP
	Rio Negro APP
	Kingston ACC



## *Paraguay*

<b>Center A</b>	<b>Center B</b>
<b>Asunción ACC</b>	<b>Curitiba ACC</b>
	<b>La Paz ACC</b>
	<b>Resistencia ACC</b>



*Peru*

Center A	Center B
<b>Lima ACC</b>	<b>Amazonic ACC</b>
	Bogota ACC
	Santiago ACC
	Iquique ACC
	Guayaquil ACC
	La Paz ACC



## *Suriname*

<b>Center A</b>	<b>Center B</b>
Paramaribo ACC	Amazonic ACC
	Georgetown ACC
	Piarco ACC
	Cayenne ACC



## *Uruguay*

<b>Center A</b>	<b>Center B</b>
Montevideo ACC	Atlantic ACC
	Curitiba ACC
	Ezeiza ACC
	Johannesburg ACC
	Resistencia ACC



## Venezuela

Center A	Center B
<b>Maiquetia ACC</b>	Amazonic ACC
	<b>Bogota ACC</b>
	<b>Barranquilla ACC</b>
	Piarco ACC
	Curacao ACC
	San Juan ACC



ICAO

UNITING AVIATION

NO COUNTRY LEFT BEHIND




# CNS/AMHS SUBGROUP



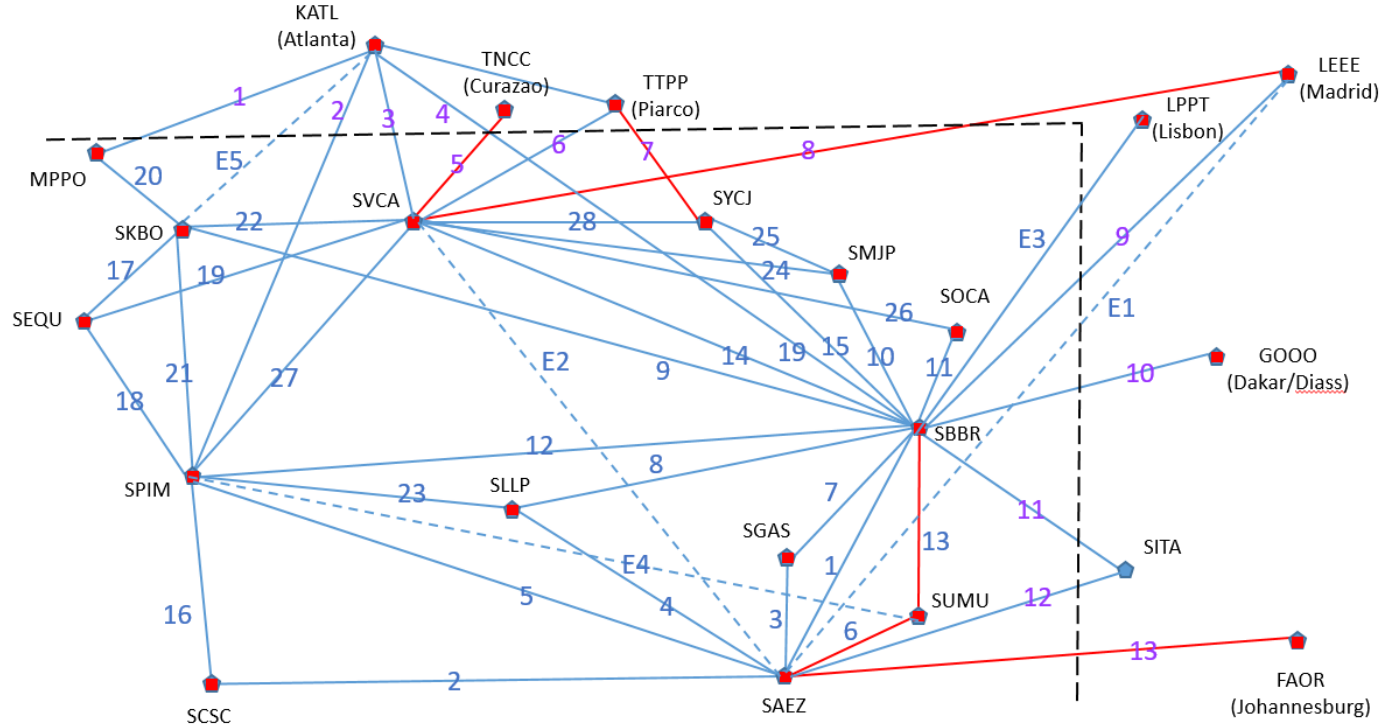
	<b>Conexión P1 / P1 Connection</b>	<b>Situación / Situation</b>	<b>Operativa en / Operational in</b>	<b>Observaciones / Notes</b>
1	SAEZ – SBBR	Operativa / Operational	04/04/2018	
2	SAEZ – SCSC	Operativa / Operational	21/01/2020	
3	SAEZ – SGAS	Operativa / Operational	30/11/2018	
4	SAEZ – SLLP	Operativa / Operational	10/02/2020	
5	SAEZ – SPIM	Operativa / Operational	10/05/2019	
6	SAEZ – SUMU			Segundo semestre de 2020 / <i>Second semester of 2020</i>
7	SBBR – SGAS	Operativa / Operational	30/11/2018	
8	SBBR – SLLP	Operativa / Operational	30/07/2019	
9	SBBR – SKBO	Operativa / Operational	22/05/2017	
10	SBBR – SMJP	Operativa / Operational	06/09/2018	
11	SBBR – SOCA	Operativa / Operational	22/01/2020	
12	SBBR – SPIM	Operativa / Operational	14/12/2015	
13	SBBR – SUMU			Segundo semestre de 2020 / <i>Second semester of 2020</i>
14	SBBR – SVCA	Operativa / Operational	28/02/2018	
15	SBBR – SYCJ	Operativa / Operational	06/07/2017	
16	SCSC – SPIM	Operativa / Operational	14/12/2015	
17	SEQU – SKBO	Operativa / Operational	16/01/2020	
18	SEQU – SPIM	Operativa / Operational	14/07/2012	
19	SEQU – SVCA	Operativa / Operational	11/10/2018	
20	SKBO – MPPA	Operativa / Operational	30/07/2020	
21	SKBO – SPIM	Operativa / Operational	15/11/2010	
22	SKBO – SVCA	Operativa / Operational	01/12/2017	
23	SLLP – SPIM	Operativa / Operational	10/05/2019	
24	SMJP – SVCA	Operativa / Operational	31/03/2019	
25	SMJP – SYCJ	Operativa / Operational	11/10/2018	
26	SOCA – SVCA	Operativa / Operational	22/01/2020	
27	SPIM – SVCA	Operativa / Operational	01/12/2017	
28	SVCA – SYCJ	Operativa / Operational	27/08/2019	



	Conexión P1 / P1 Connection	Situación / Situation	Operativa en / Operational in	Observaciones / Notes
1	MPPA – KATL	Operativa / Operational	2018	
2	SPIM – KATL	Operativa / Operational	02/03/2020	
3	SVCA – KATL	<b>Operativa / Operational</b>	<b>27/01/2021</b>	
4	SBBR – KATL	Operativa / Operational	06/08/2019	
5	SVCA – TNCC			
6	SVCA – TTPP	<b>Operativa / Operational</b>	<b>26/04/2021</b>	
7	SYCJ – TTPP			
8	SVCA – LEEE			
9	SBBR – LEEE	Operativa / Operational	11/10/2018	
10	SBBR – GOOO	Operativa / Operational	25/06/2020	
11	SBBR – SITA	Operativa / Operational	16/08/2018	
12	SAEZ – SITA	Operativa / Operational	18/07/2019	
13	SAEZ – FAOR	En coordinación / In coordination		
E1	SAEZ – LEEE	En coordinación / In coordination		Extra plan
E2	SAEZ – SVCA	En coordinación / In coordination		Extra plan  (Ctrl) ▼
E3	SBBR – LPPT			Extra plan
E4	SPIM – SUMU			Extra plan
E5	KATL – SKED			Extra plan



**AMHS Interconnections / Interconexiones AMHS  
ASBU COMI-B0/7 (24 April/Abril 2021)**





ICAO

UNITING AVIATION

NO COUNTRY LEFT BEHIND



# MET/IWXXM SUBGROUP



- HOME
- AIRM VIEWER
- COMMUNITY
- DOCS
- FAQ
- DEVELOPERS

BETA

# The ATM Information Reference Model (AIRM)

The reference vocabulary for defining air traffic management information

[Continue](#)



## Modelo de Intercambio de Información ATM - AIRM

<https://www.aixm.aero/>



AIXM

<https://www.fixm.aero/>



FIXM

<https://old.wmo.int/wiswiki/>



IWXXM



KLAX 192353Z 26015KT 10SM FEW010 FEW150 SCT250 23/18 A2991 RMK AO2

Aeropuerto  
Internacional  
de Los  
Ángeles

**Dirección de  
viento: 260°**  
**Intensidad:**  
15 nudos

Algunas nubes: 1000  
ft. (AGL)  
Algunas nubes: 15000  
ft. (AGL)

Medio nublado:  
25000 ft. (AGL)

**Altímetro:**  
29.92 Hg

**Día:** 19 de mes  
**Hora:** 23:53 en  
horario Zulu  
(UTC)

10 millas  
estatutarias  
de visibilidad

**Temperatura:**  
23°C  
**Punto de rocío:**  
18°C

Observaciones:  
**AO2** (Estación  
automatizada  
con sensor de  
precipitación)



```
<?xml version="1.0" encoding="UTF-8"?>
<wfs:FeatureCollection xmlns:wfs="http://www.opengis.net/wfs/2.0" xmlns:xs="http://www.w3.org/2001/XMLSchema" xmlns:metgate="http://metgate"
xmlns:gml="http://www.opengis.net/gml/3.2" xmlns:xsi="http://www.w3.org/2001/XMLSchema-instance" numberMatched="1" numberReturned="1" timeStamp="2016-05-
25T13:57:02.150Z" xsi:schemaLocation="http://www.opengis.net/gml/3.2 http://schemas.opengis.net/gml/3.2.1/gml.xsd http://www.opengis.net/wfs/2.0
http://schemas.opengis.net/wfs/2.0/wfs.xsd http://metgate http://tiberius.meteo.fr:80/geoserver/wfs?
service=WFS&version=2.0.0&request=DescribeFeatureType&typeName=metgate%3Ametariwxxm"><wfs:member><metgate:metariwxxm
gml:id="metariwxxm.200"><metgate:data><!--
METAR LFPG 251200Z VRB03KT 9999 -RA SCT012 BKN084 18/15 Q1002 NOSIG
--><iwxxm:METAR xmlns:iwxxm="http://icao.int/iwxxm/1.0" xmlns:om="http://www.opengis.net/om/2.0" xmlns:xlink="http://www.w3.org/1999/xlink"
xmlns:metce="http://def.wmo.int/metce/2013" xmlns:sams="http://www.opengis.net/samplingSpatial/2.0" xmlns:sam="http://www.opengis.net/sampling/2.0"
xmlns:saf="http://icao.int/saf/1.0" gml:id="metar-LIMC-20160307T155000Z" status="NORMAL" automatedStation="false"
xsi:schemaLocation="http://icao.int/iwxxm/1.0 http://schemas.wmo.int/iwxxm/1.0/iwxxm.xsd http://def.wmo.int/metce/2013
http://schemas.wmo.int/metce/1.0/metce.xsd">
  <iwxxm:observation>
    <om:OM_Observation gml:id="obs-LFPG-20160511T123000Z">
      <om:type xlink:href="http://codes.wmo.int/49-2/observation-type/IWXXM/1.0/MeteorologicalAerodromeObservation"/>
      <om:phenomenonTime>
        <gml:TimeInstant gml:id="ti-20160511T123000Z">
          <gml:timePosition>2016-05-25T12:00:00Z</gml:timePosition>
        </gml:TimeInstant>
      </om:phenomenonTime>
      <om:resultTime xlink:href="#ti-20160511T123000Z"/>
      <om:procedure>
        <metce:Process gml:id="p-49-2-metar">
          <gml:description>WMO No. 49 Volume 2 Meteorological Service for International Air Navigation APPENDIX 3 TECHNICAL SPECIFICATIONS RELATED TO
METEOROLOGICAL OBSERVATIONS AND REPORTS</gml:description>
          </metce:Process>
        </om:procedure>
        <om:observedProperty xlink:href="http://codes.wmo.int/49-2/observable-property/MeteorologicalAerodromeObservation" xlink:title="Observed properties
for Meteorological Aerodrome Observation Reports (METAR and SPECI)"/>
        <om:featureOfInterest>
          <sams:SF_SpatialSamplingFeature gml:id="sp-LFPG">
            <sam:type xlink:href="http://www.opengis.net/def/samplingFeatureType/OGC-OM/2.0/SF_SamplingPoint"/>
            <sam:sampledFeature>
              <saf:Aerodrome gml:id="uuid.LFPG-111230Z-1">
                <gml:identifier codeSpace="urn:uuid:">LFPG-111230Z-1</gml:identifier>
              </saf:Aerodrome>
            </sam:sampledFeature>
          </sams:SF_SpatialSamplingFeature>
        </om:featureOfInterest>
      </om:OM_Observation>
    </iwxxm:observation>
  </metgate:data>
</metgate:metariwxxm>
</wfs:member>
</wfs:FeatureCollection>
```



**REDEMET**

Início Produtos Facilidades Sistemas Blog Fale Conosco **?** Autoatendimento Monitoramento **3**

**Camadas** **Legendas** **Atualizações**

- ▶ Condições meteorológicas nos aeródromos
- ▶ Imagens de Satélite
- ▶ Radar
- ▶ Modelos
- ▶ Área de FIR
- ▶ Plotagem
- ▶ Coordenadas

**Informações de SBFN**

**Nome:** Aeroporto de Fernando de Noronha  
**Cidade:** Fernando do Noronha/PE  
**Dia:** 26 **Hora:** 16:00(UTC) **Localização:** 3°51'17''S / 32°25'24''W  
**Visibilidade:** Maior ou igual à 10km **Teto:** Não há formação de teto  
**Céu:** com nuvens esparsas **Condições do tempo:** Sem tempo significativo  
**Temperatura:** 29°C **Umidade relativa:** 66% **Vento:** 150° com 12kt ou 22km/h

**METAR**

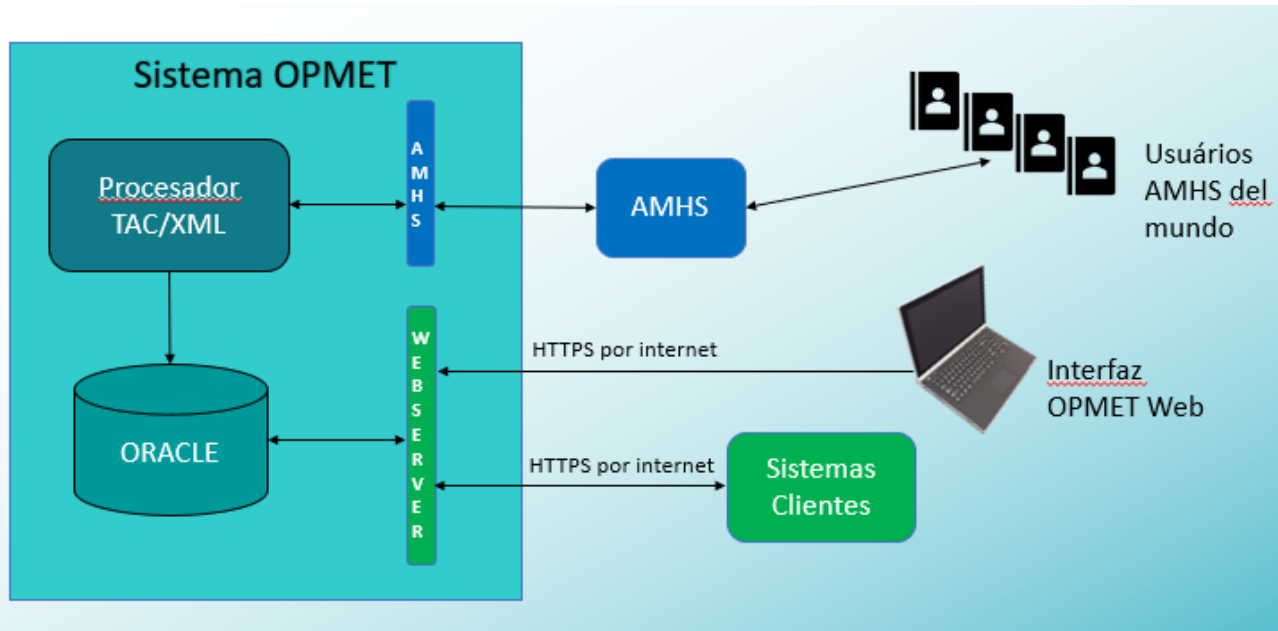
METAR SBFN 261600Z AUTO 15012KT 9999 FEW018 SCT021 29/22 Q1012=

**TAF**

TAF SBFN 260900Z 2612/2624 15015KT 9999 FEW030 TX29/2617Z TN27/2623Z BECMG 2721/2723 14010KT FEW025 RMK PGY=



## Banco de datos OPMET regional





ICAO

UNITING AVIATION

NO COUNTRY LEFT BEHIND



# CNS/SUR SUBGROUP



**Conclusion SAM/IG/25-07 Space-based ADS-B Implementation through a Regional Technical Cooperation Project**

**That the Secretariat:**

- a) Consult Trinidad & Tobago about the interest of participating in the potential regional implementation of space-based ADS-B together with Chile and Panama, initially;
- b) Start the procedures together with the Technical Cooperation Bureau (TCB) to enable the contracting of the service through the Regional Project RLA/03/901; and
- c) Organize an Ad-hoc group of the Regional Project RLA/03/901, with the States interested in participating in the regional implementation of Space-based ADS-B, for the preparation of the necessary documents for the potential contracting of the service.

**Expected impact:**

- Political / Global
- Inter-regional
- Economic
- Environmental
- Technical / Operational

**Why:**  
Provide the States that expressed interest in the implementation of Space-based ADS-B with the necessary support for contracting the service.

**When:**  
Immediately

**Situation:**  
Adopted in SAM/IG/25

**Who:**  
 Coordinators  States  ICAO SAM Secretariat  TCB  Other: Industry/Users

- Trinidad & Tobago has expressed interest in participating in a potential implementation of Space-based ADS-B, through a Regional Technical Cooperation Project (RLA/03/901).
- TCB (Technical Cooperation Bureau) has provided the information and administrative costs that an implementation would involve through the Regional Technical Cooperation Project RLA/03/901 (REDDIG II).
- A draft of technical specifications has been prepared and circulated for review by the 3 States interested in the implementation of Space-based ADS-B.



North American  
Central American  
and Caribbean  
(NACC) Office  
Mexico City

South American  
(SAM) Office  
Lima

ICAO  
Headquarters  
Montréal

Western and  
Central African  
(WACAF) Office  
Dakar

European and  
North Atlantic  
(EUR/NAT) Office  
Paris

Middle East  
(MID) Office  
Cairo

Eastern and  
Southern African  
(ESAF) Office  
Nairobi

Asia and Pacific  
(APAC) Sub-office  
Beijing

Asia and Pacific  
(APAC) Office  
Bangkok



**THANKS**

[falmeida@icao.int](mailto:falmeida@icao.int)