

GTE/21 WP/09

Vertical Safety

Monitoring Report

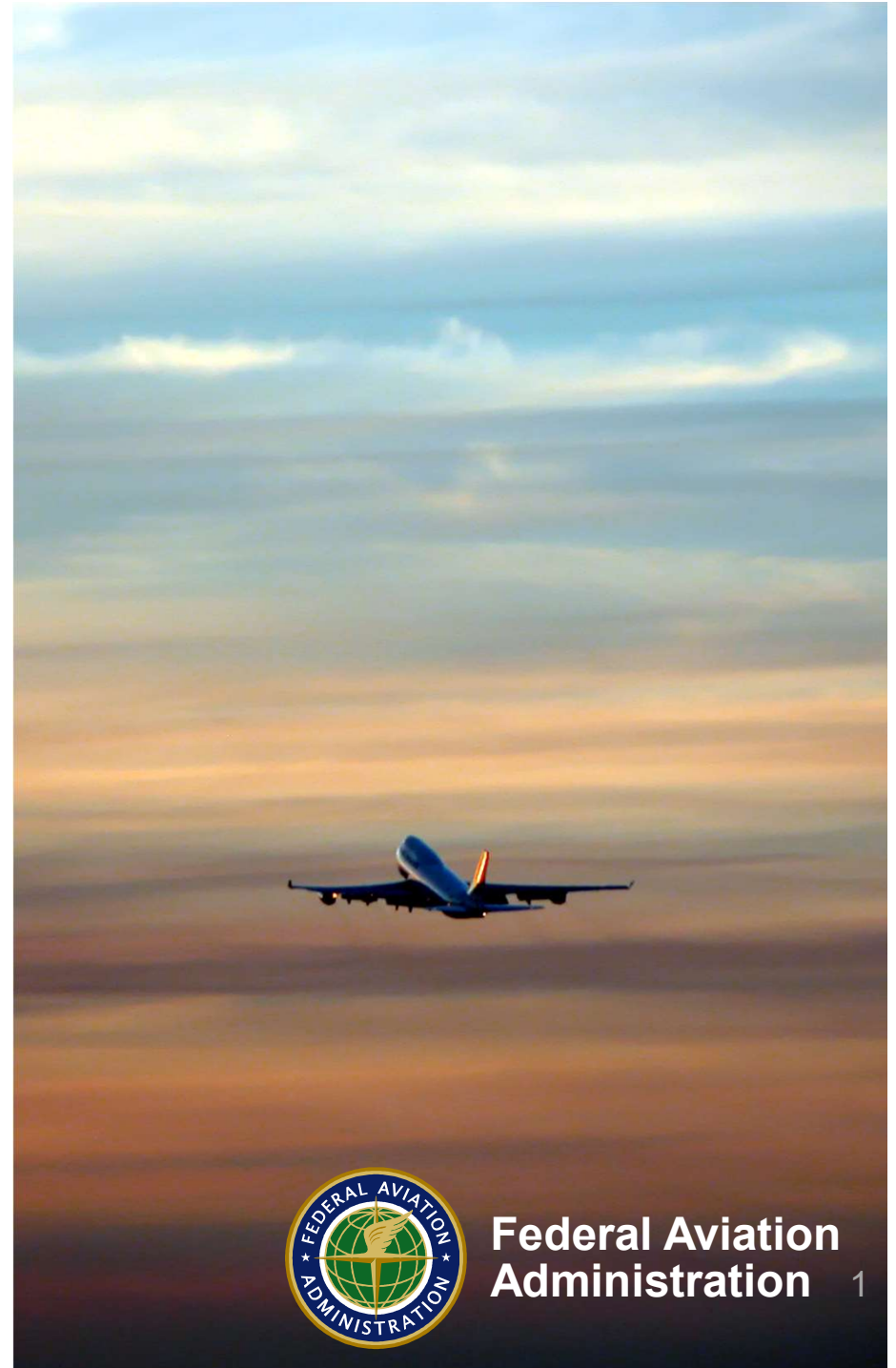
México/GOMEX Airspace

CALENDAR YEAR 2020

Presented to: GTE/21

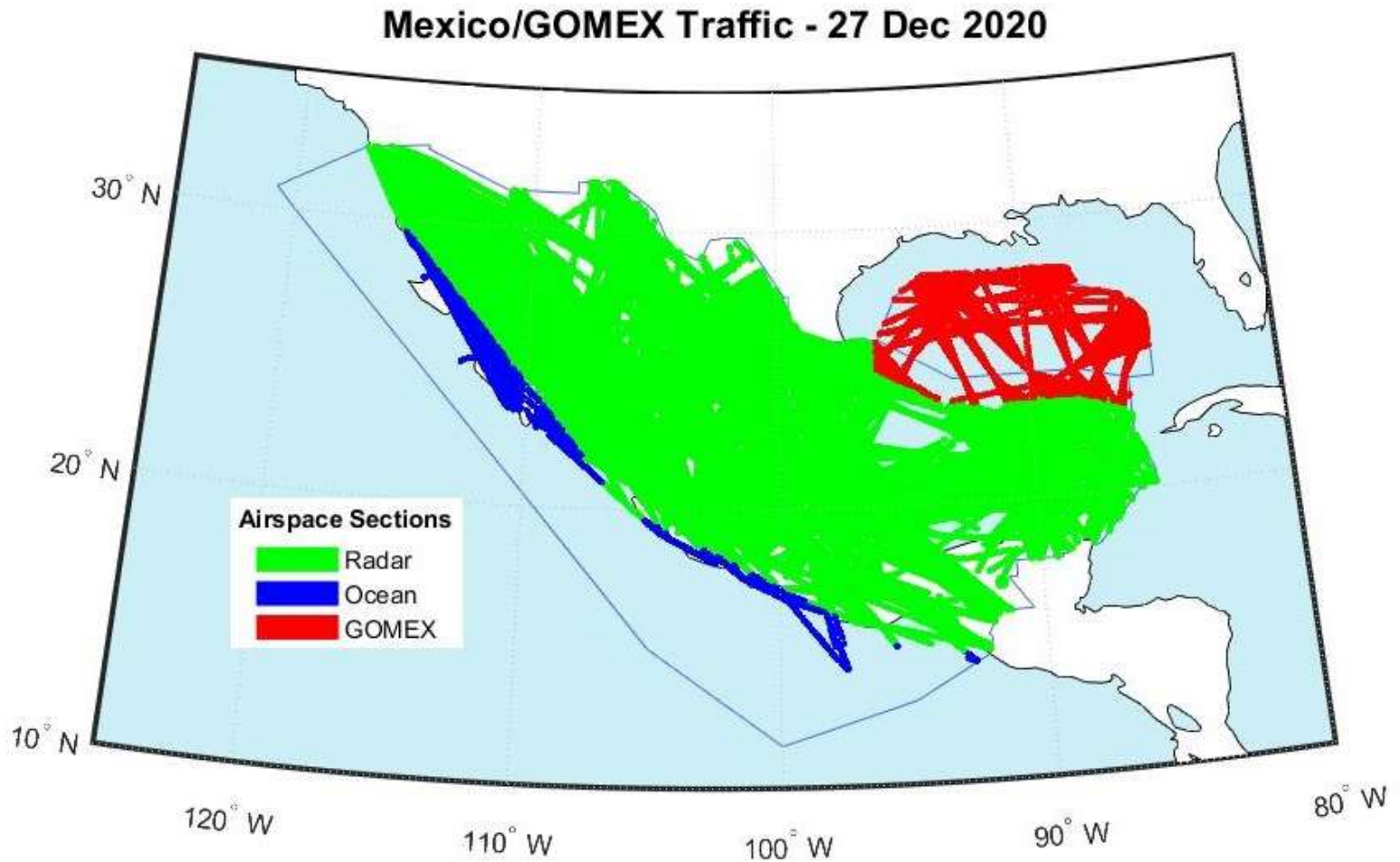
By: NAARMO

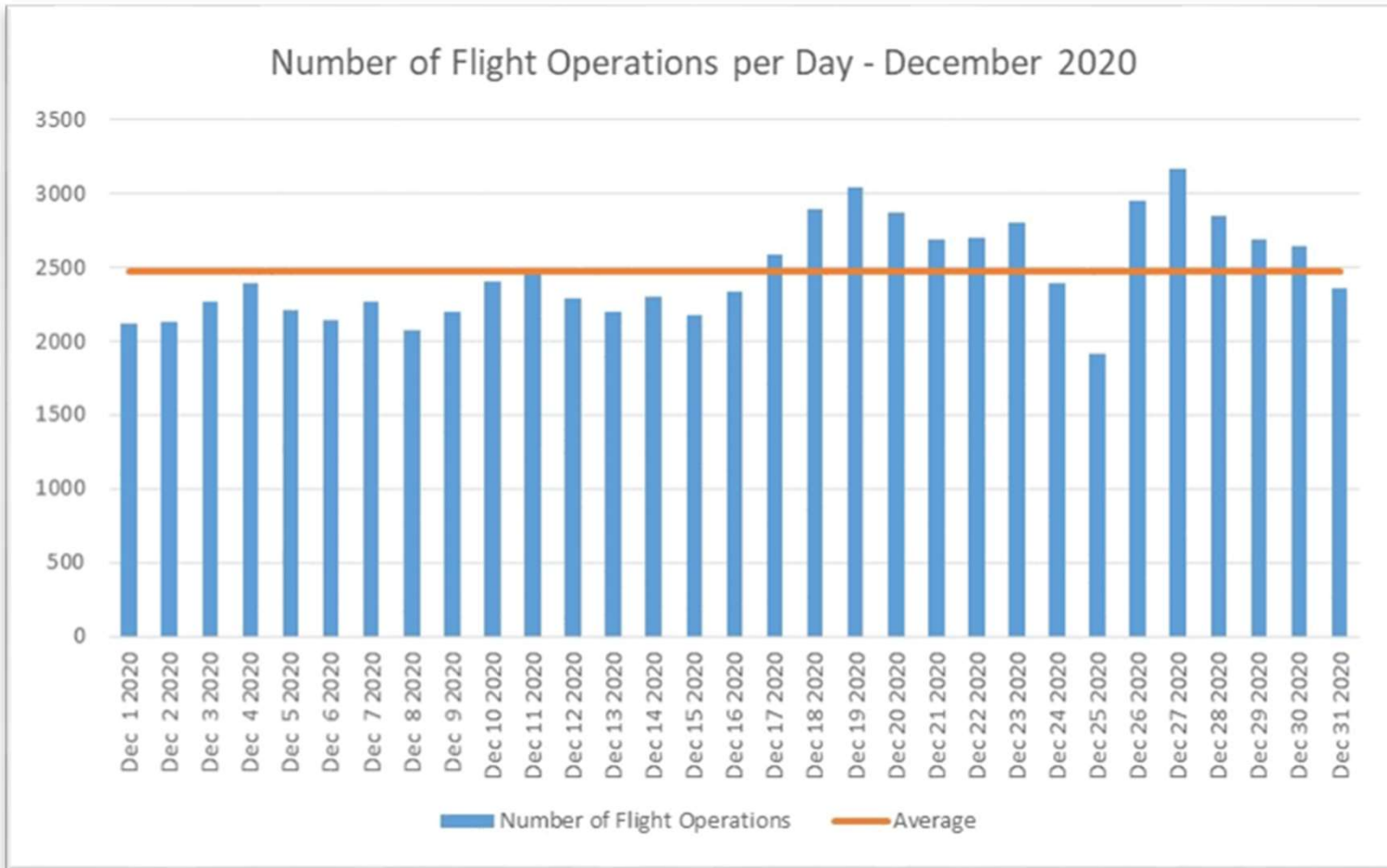
Date: 23 - 26 August 2021



**Federal Aviation
Administration** 1

Mexico/GOMEX Airspace





December 2020 traffic levels were 25% lower compared to December 2019



Risk-Bearing LHDs by Month - 2020

Month	Count	Duration at Incorrect FL (min)	FLs Crossed
January	3	1	0
February	0	0	0
March	2	1	1
April	0	0	0
May	0	0	0
June	0	0	0
July	2	1.5	0
August	0	0	0
September	0	0	0
October	0	0	0
November	3	1.5	8
December	0	0	0
Total	10	5	9

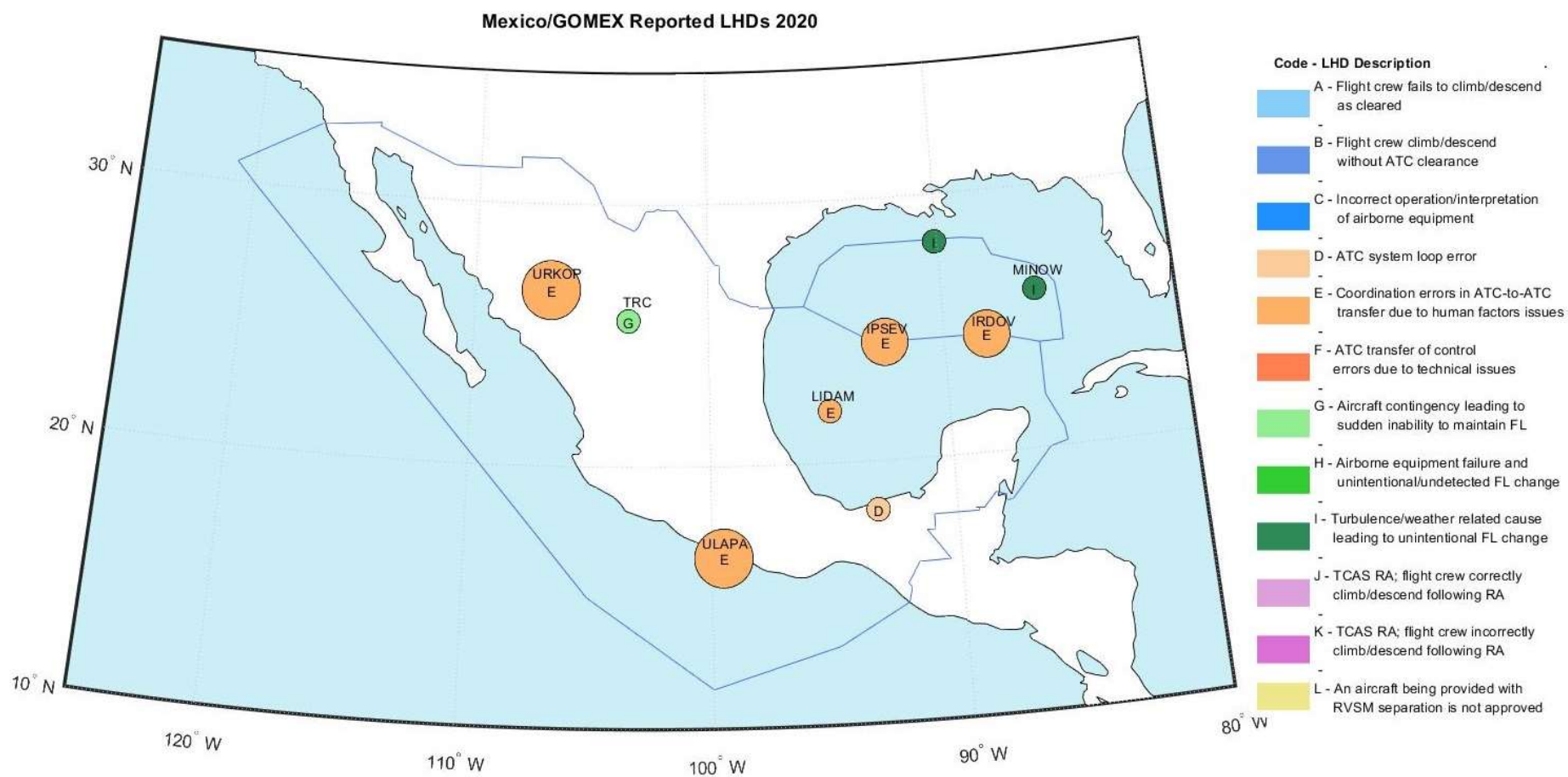


Reported LHDs by Category

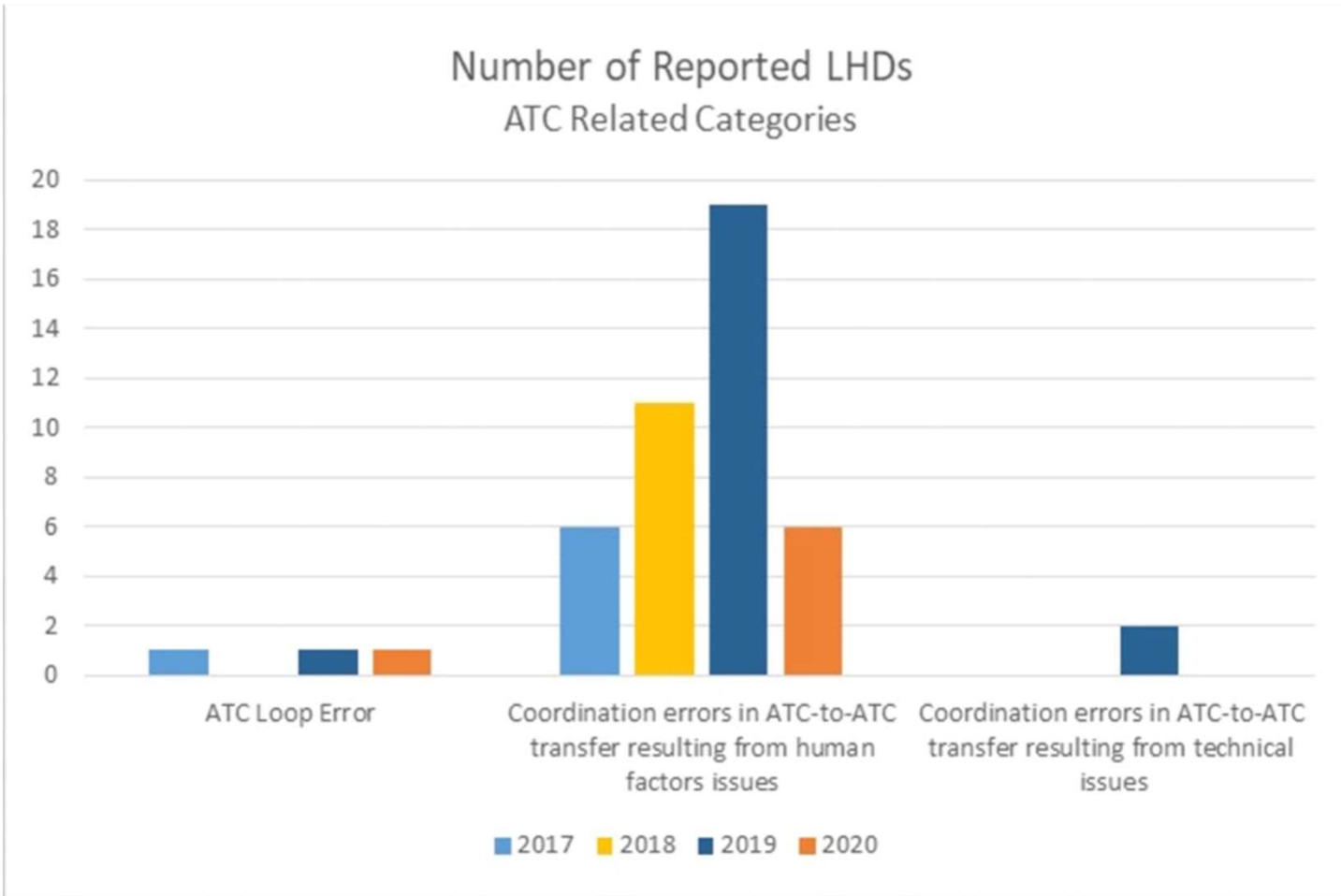
Category	LHD Category Description	Count	Duration at Incorrect FL (min)	Number FLs Crossed
D	ATC Loop Error	1	0	1
E	Coordination errors in the ATC -to-ATC transfer of control responsibility as a result of human factors issues	6	5	2
F	Coordination errors in the ATC -to-ATC transfer of control responsibility as a result of an outage or technical issues	0	0	0
G	Aircraft contingency event leading to sudden inability to maintain assigned flight level (e.g. pressurization failure, engine failure)	1	0	6
I	Turbulence or other weather related cause	2	0	0
	TOTALS	10	5	9



Reported LHDs Locations



LHD Summary

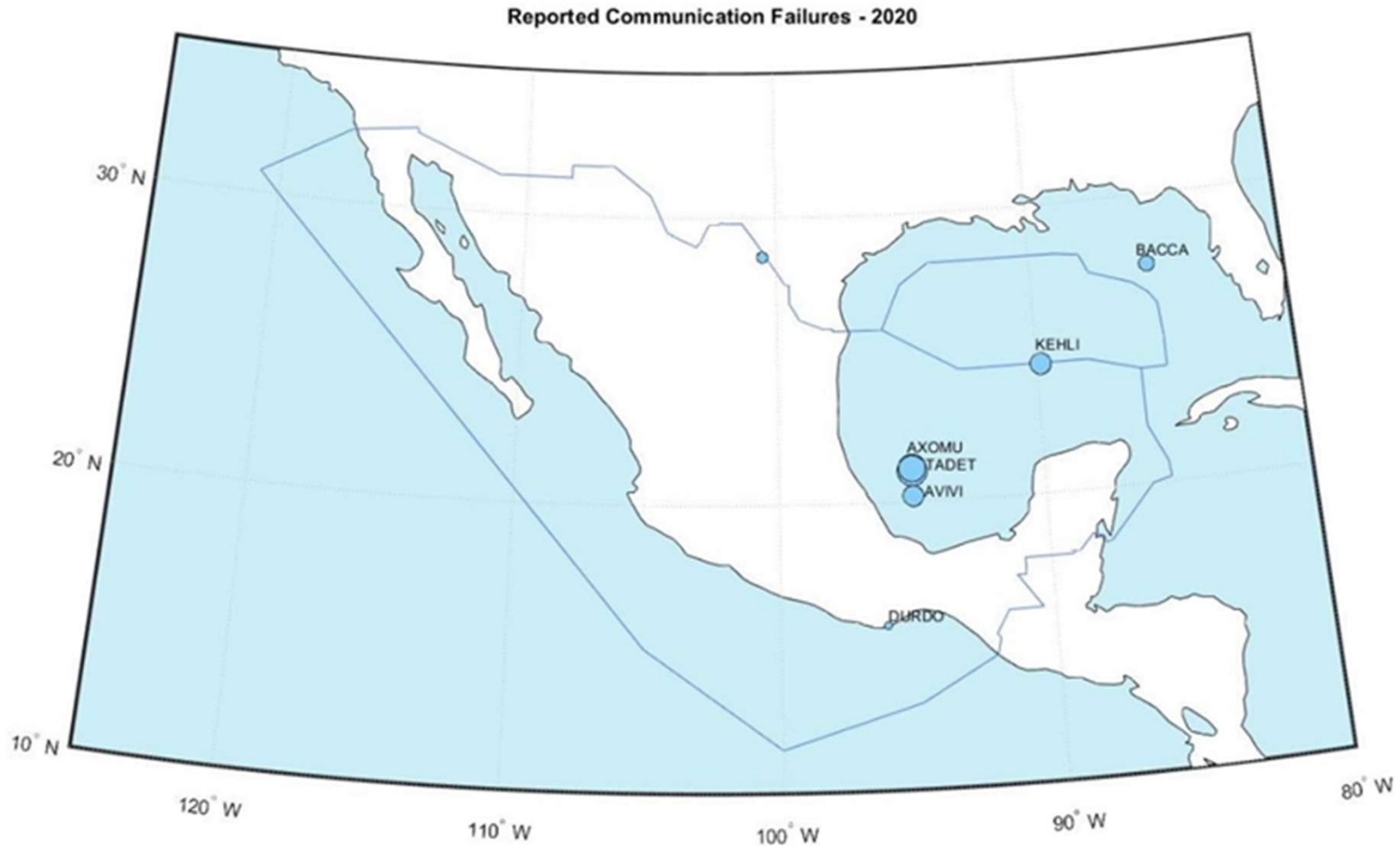


Communication Failure Reports

- **Number of reported communication failures decreased in 2020**



Reported Communication Failures



2020 Vertical Risk Estimates

Description	Risk Estimate ($\times 10^{-9}$ fapfh)
Estimate of Technical Risk	0.05
Estimate of Risk Due to Operation at Incorrect Flight Levels	1.46
Estimate of Overall Risk	1.51



Summary

- **Estimated vertical risk estimate for 2020 is lower than previous**

