

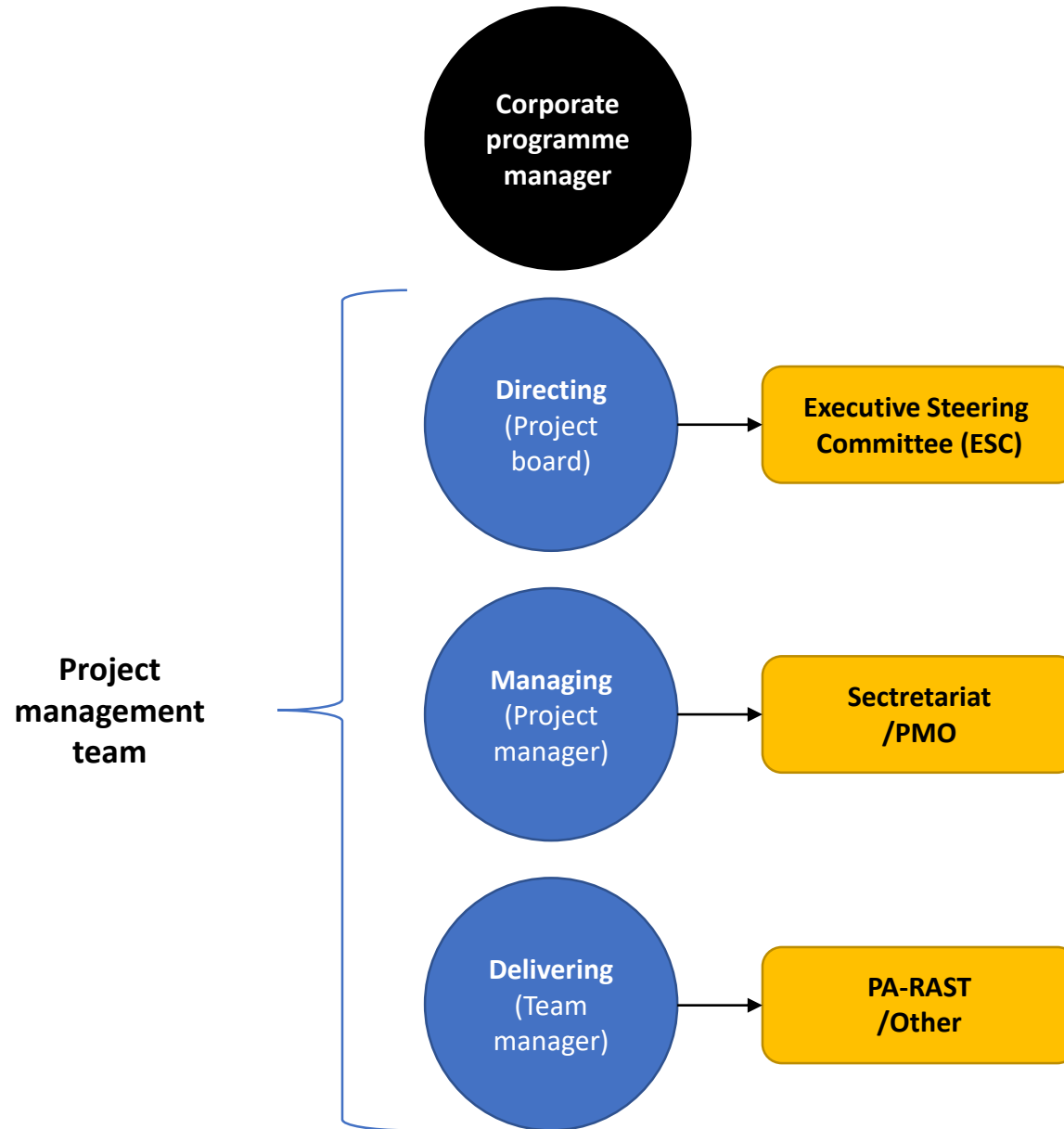
Difference between a project and a process

A **project** is defined by a fixed time, scope, and resources. When implementing a project, the goal is to execute change, usually drastic, and to incorporate that change into the day-to-day processes of the company.

A **process** is defined by cycles. Similar to a project, a process also has a beginning, middle, and end; however, this cycle repeats itself over an average period of time.

RASG-PA Core-processes:

- Annual Safety Report
- Regular meetings
- Safety Information Analysis
- Report to the ANC
- Performance measuring against GASP



PMO Role:

Establishing Project methodologies (M)

Project tracking and reporting (T) (R)

Project support (S)

