

Supporting
European
Aviation



ICAO SAM A-CDM workshop

Data Exchange

David Phythian

Senior Expert Airports

14th November 2019



NETWORK
MANAGER



Airport Challenges for the Network



INFLUENCES



Airports performance **influences** Network performance



IMPACTS



Network performance **impacts** Airport performance

Current Situation

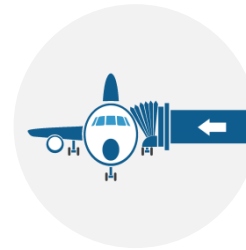


Late arrival = late departure?

A-CDM – Main Partners



Network
Operations



Airport
Operations



Air Traffic
Control



Aircraft
Operators



Ground
Handling

Information Sharing - Principle

Foundation for Airport CDM



The **right** information

To the **right** people

At the **right** time

A-CDM - Elements

Collaborative Management of Flight Updates

**Variable Taxi
Time
Calculation**

**Collaborative
Pre-Departure
Sequencing**

**CDM in Adverse
Conditions**

Milestone Approach

Airport CDM Information Sharing

A-CDM – Information Sharing

Airport Operator

- Airport slot data
- Stand & gate allocation
- Special events
- Reduction in airport capacity



Network Operations

- Flight plan data
- ATFM departure slots
- Arrival information (Flight Status/ELDT)

ATC

- Real-time updates of LDG
- Taxi times & SIDs
- Runway operational capacity
- A-SMGCS data/radar information

Other service providers

- De-icing companies (de-icing times)
- Met office (met info)

AO/GH

- Flight plans
- Turn-round times
- Priority of flights
- Aircraft registration
- Aircraft movement data

Single Platform

Acronyms & Abbreviations

- i.e

STD

STA

ETA

E/ALDT

E/AIBT

EOBT

ETOT

CTOT



AREA	SURFACE VIS AND WX	CLOUD	0 C
A	25 KM NIL ISOL 7 KM HZ SEA COT (AND LAN TL 08 Z) ISOL (OCNL FM 10 Z) 5000 M +SHRA/+TSRA LAN A2 ISOL 200 M FG A1 (AND LAN ELSEWHERE TL 07 Z) ISOL HILL FG	ISOL (OCNL FM 10 Z) CB 050-080 / XXX A2 FEW/SCT CU SC .A. 030 / 050-060 N OF 55 N ISOL BKN ST 000 / 005 A1 (AND LAN ELSEWHERE TL 07 Z)	XXX BUT 080 FAR NE
B	15 KM NIL WDPSR 7 KM HZ OCNL (WDSPR B1) 2000 M BR/DZ ISOL (OCNL B1) 200 M FG ISOL HILL FG	AREAS BKN/OVC SC 020 / 030-035 MAINLY B1 OCNL (WDSPR B1) BKN (OVC B1) ST SC 003-007 / 015-020 (BASE 000 FG)	XXX

A-CDM ISP



Ciss Staffpages (Operational)

COMBINED ARRIVALS AND DEPARTURES

FLT-A	STA	LDT	IBT	ACREG	FLT-D	STD	TOBT	TSAT	TOT
JT7417	0720	0719 A	0730 A	B2440	JT7404	0935	0933 I	0935 I	0948 E
NW0067R	1040	1050 E	1057 E	N810NW	NW0067	1040	1038 I	1046 E	1108 E
SK2551	0945	0940 A	0947 A	LNROU	SK552	1025	1023 I	1057 A	1111 A
KL0562	0540	0450 A	0503 A	PHAOI	KL0561	1050	1048 I	1057 A	1112 E
KL0612	0715	0613 A	0625 A	PHBFH	KL0611	1035	1033 I	1058 A	1115 E
FV0277	0940	0936 A	0941 A	EICDG	FV0278	1040	1038 I	1058 A	1118 E
AF1340	0920	0900 A	0904 A	FGRXF	AF1341	1105	1103 I	1059 A	1120 E
				PHKZG	KL7313	0900	0858 I	1102 A	1112 A
KL0810	0530	0524 A	0536 A	PHBFY	KL0661	1010	1008 I	1104 A	1116 E
				PHBQB	KL0605	1110	1108 I	1108 A	1128 E
KL0872	0545	0539 A	0551 A	PHBFN	KL0871	1105	1103 I	1109 A	1127 E
SQ324	0645	0648 A	0701 A	9VSVI	SQ323	1115	1113 I	1124 E	1143 E
SU229	1040	1014 A	1024 A	VPBQX	SU230	1135	1133 I	1151 E	1208 E
AY841	0945	0949 A	0954 A	OHLXD	AY842	1155	1153 I	1158 E	1215 E
MH0016	0555	0610 A	0622 A	9MMPI	MH0017	1200	1158 I	1158 E	1215 E
KF831	1115	1125 E	1130 E	OHSAI	KF832	1155	1153 I	1207 E	1224 E
KL1224	1105	1107 A	1112 A	PHBDP	KL1113	1220	1218 I	1218 E	1235 E
AZ108	1155	1129 E	1133 E	IBIMF	AZ109	1245	1243 I	1245 I	1257 E
NW0060	1100	1012 A	1018 A	N545US	NW0035	1245	1243 I	1245 I	1301 E
RJ151	1155	1220 E	1227 E	JYAYI	RJ152	1240	1238 I	1246 E	1258 E
KL1126	1130	1131 E	1133 E	PHJCT	KL1327	1255	1253 I	1255 I	1307 E
GTI812	1255	1248 E	1255 I	N499MC	GTI931	1300	1258 I	1300 I	1313 E

11:14 30-01-08 woensdag Connected 310 Page: 310

Clearly link arrivals & departures

Avoid information overload

Create consistent look and feel

Avoid extra display

Tailor to each partner's needs

Airport database: the best platform to store, process and share Airport CDM information

A-CDM –Data Exchange

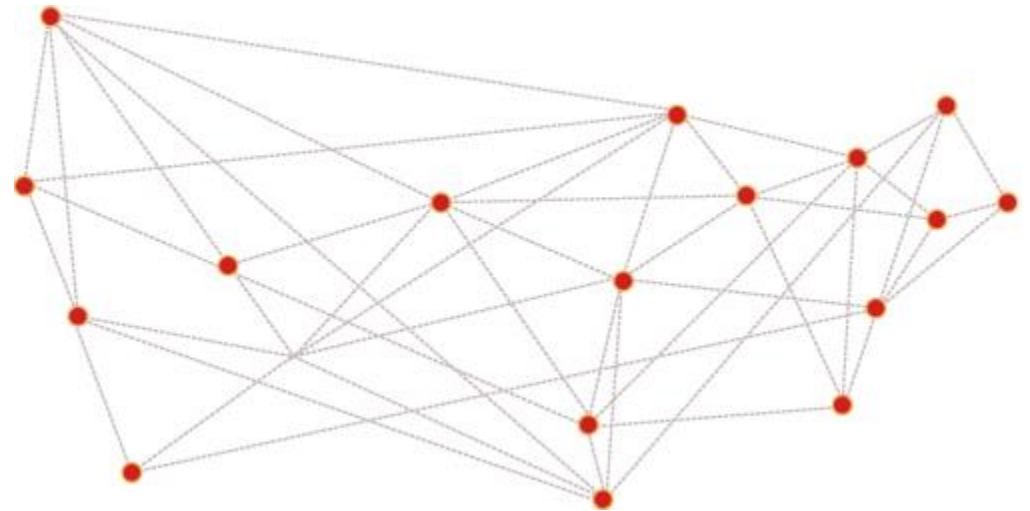
Exchangeable

Available - in good time

Agreed format

Agreed language

Coordinated



Data Exchange

- **Bringing Partners together**
 - → Promotes trust
- **Common situational awareness**
 - → Enables monitoring of operations
 - → Optimises the use of resources
- **Improved predictability**
 - → Improves runway planning
 - → Maximises operational efficiency



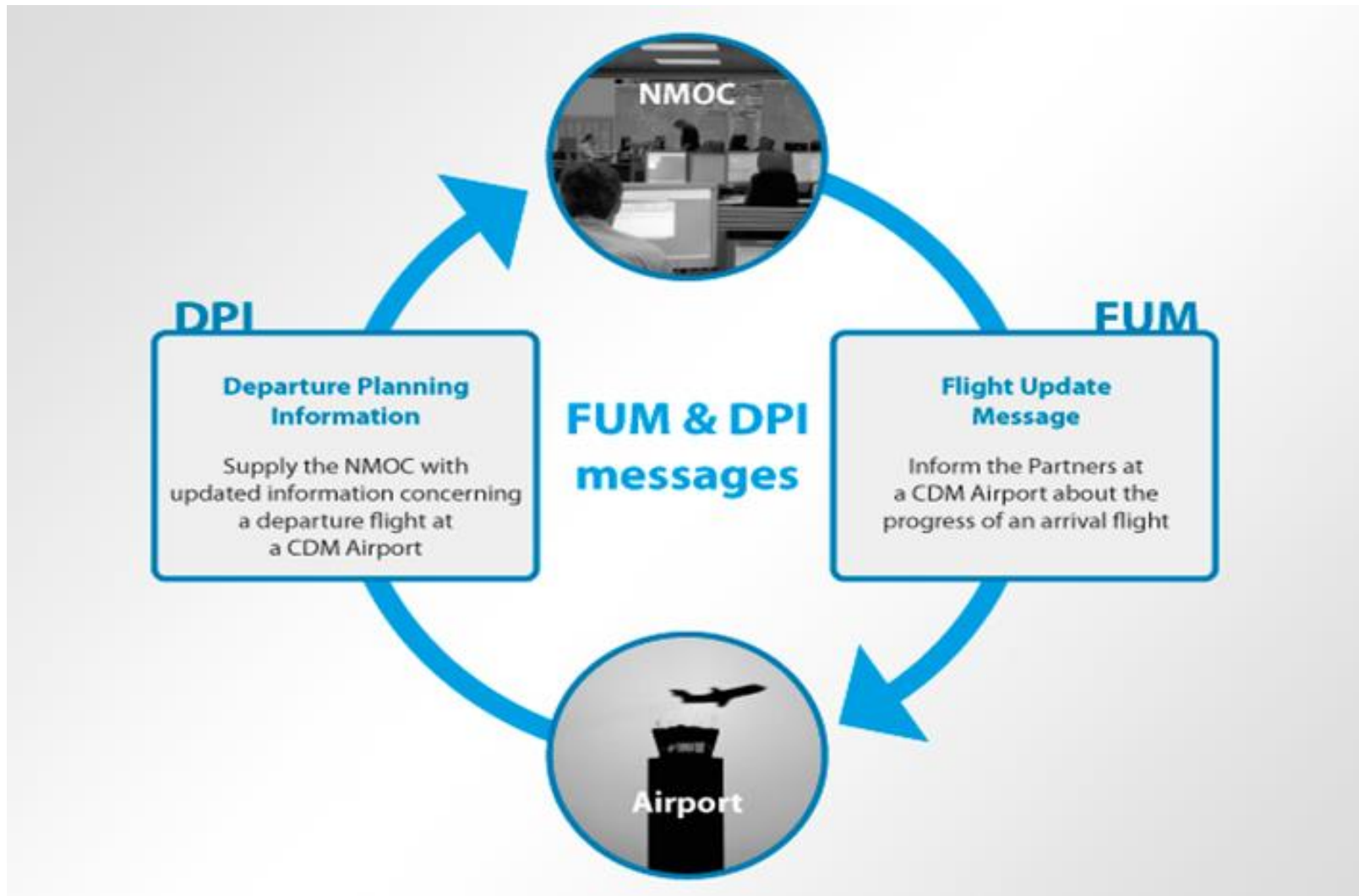
Data Exchange



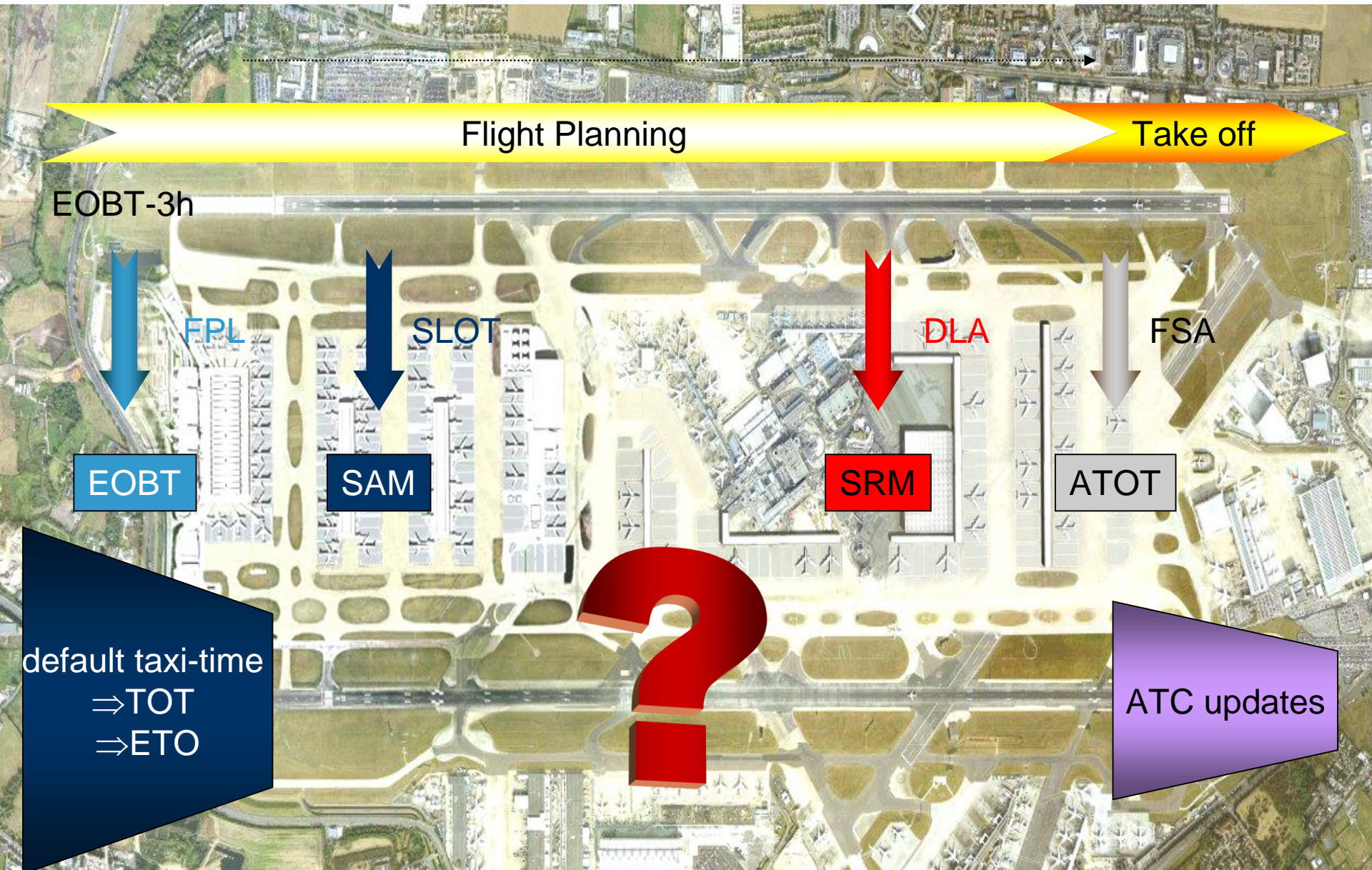
- **Key messages**
- **Information sharing** through a transparent platform
- **Link** arrivals, turn-round and departures
- **Monitor progress** of a flight using adapted procedures and alerts – linked to Milestones
- **Target times:**
 - **TOBT** = flight ready to leave the block
 - **TSAT** = flight authorised to move by ATC



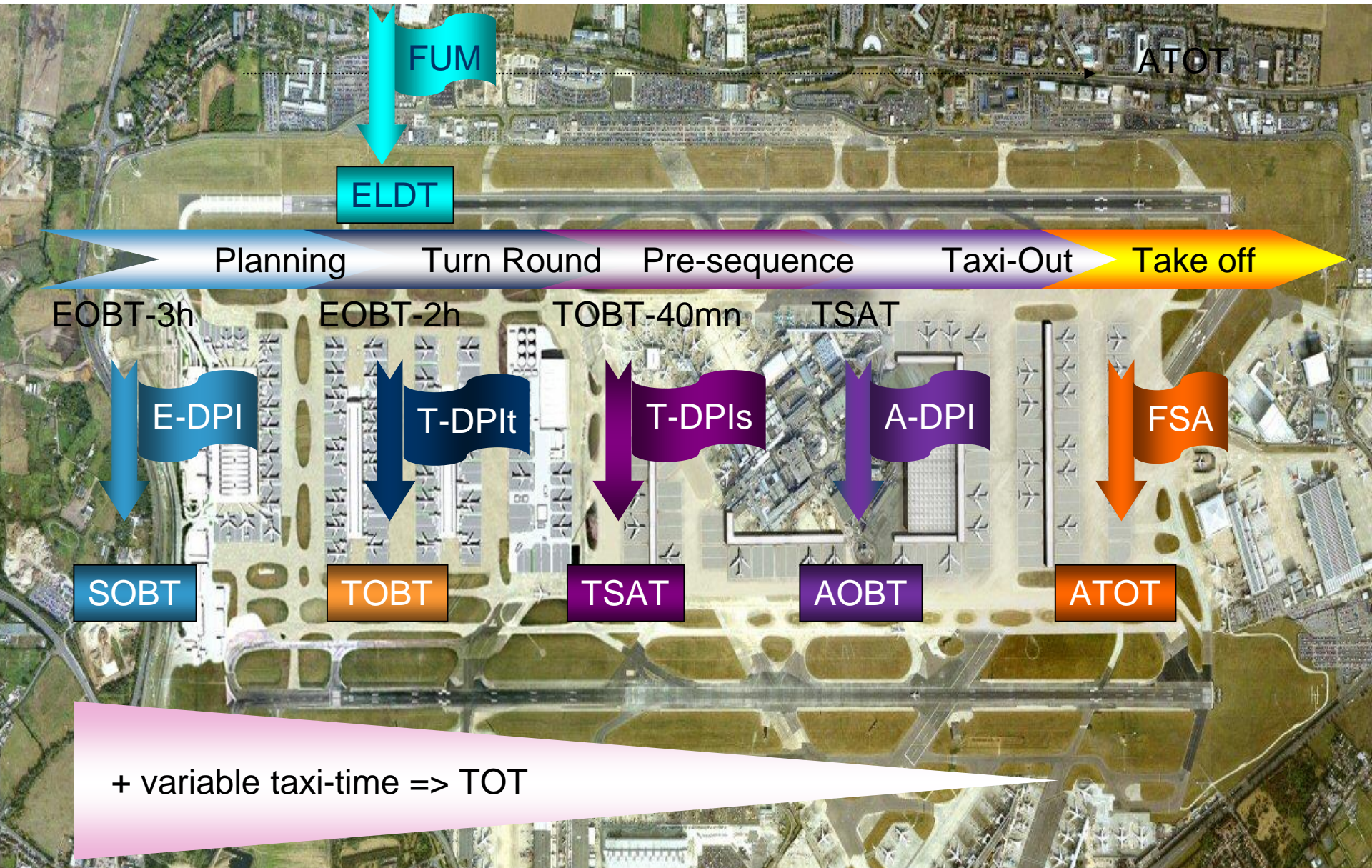
A-CDM in the European Network



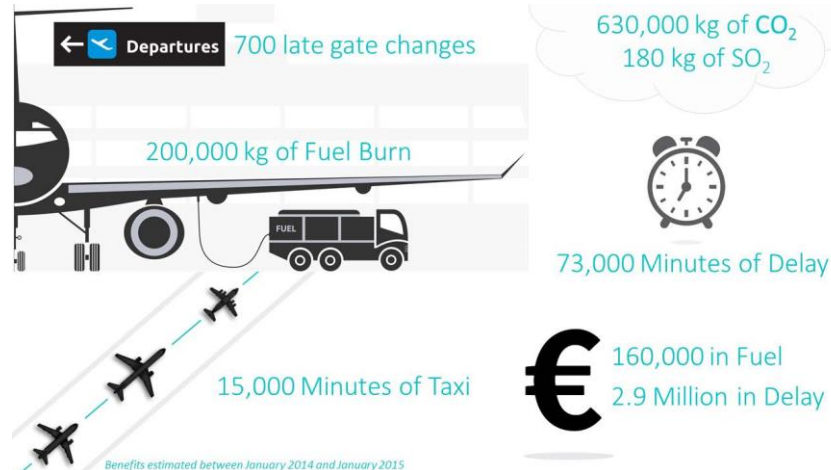
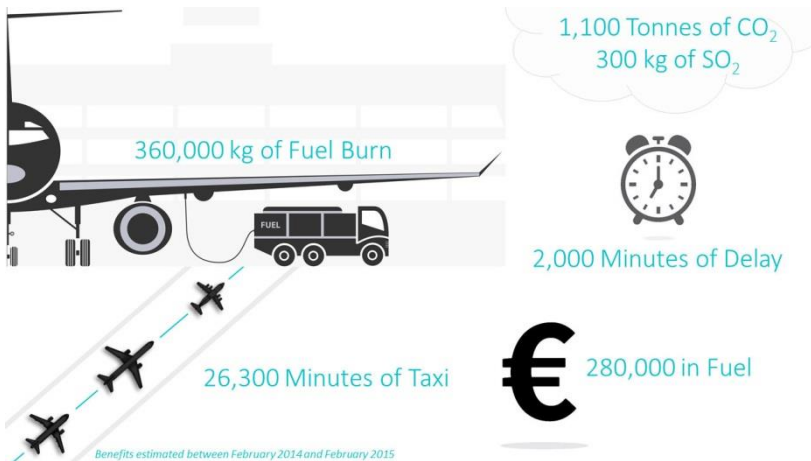
Non - CDM airport - Departure Planning



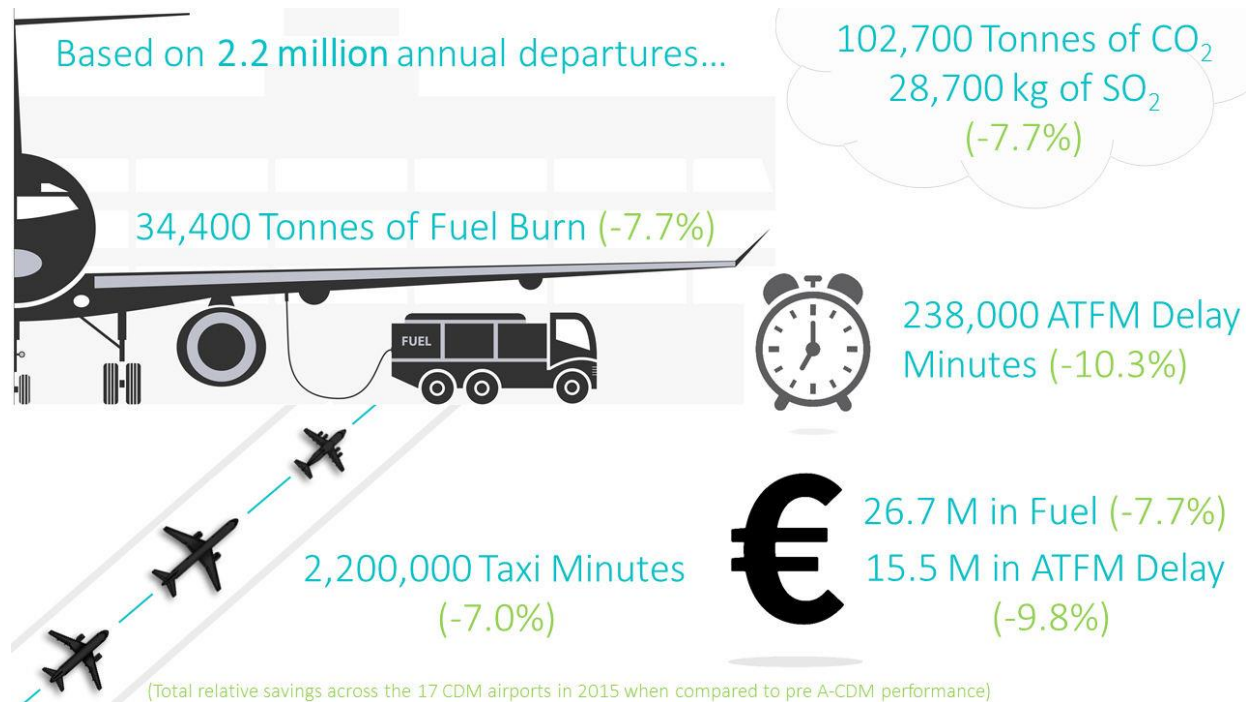
CDM Airport – Departure Planning



Benefits – Partners



Benefits – 16 Airports 2016



Thank you

