

PBN SUL



**Departamento de Controle
do Espaço Aéreo**

DEPARTMENT OF AIR SPACE CONTROL - DECEA

www.decea.gov.br

IMPLANTACIÓN PBN Sul



OBJETIVO

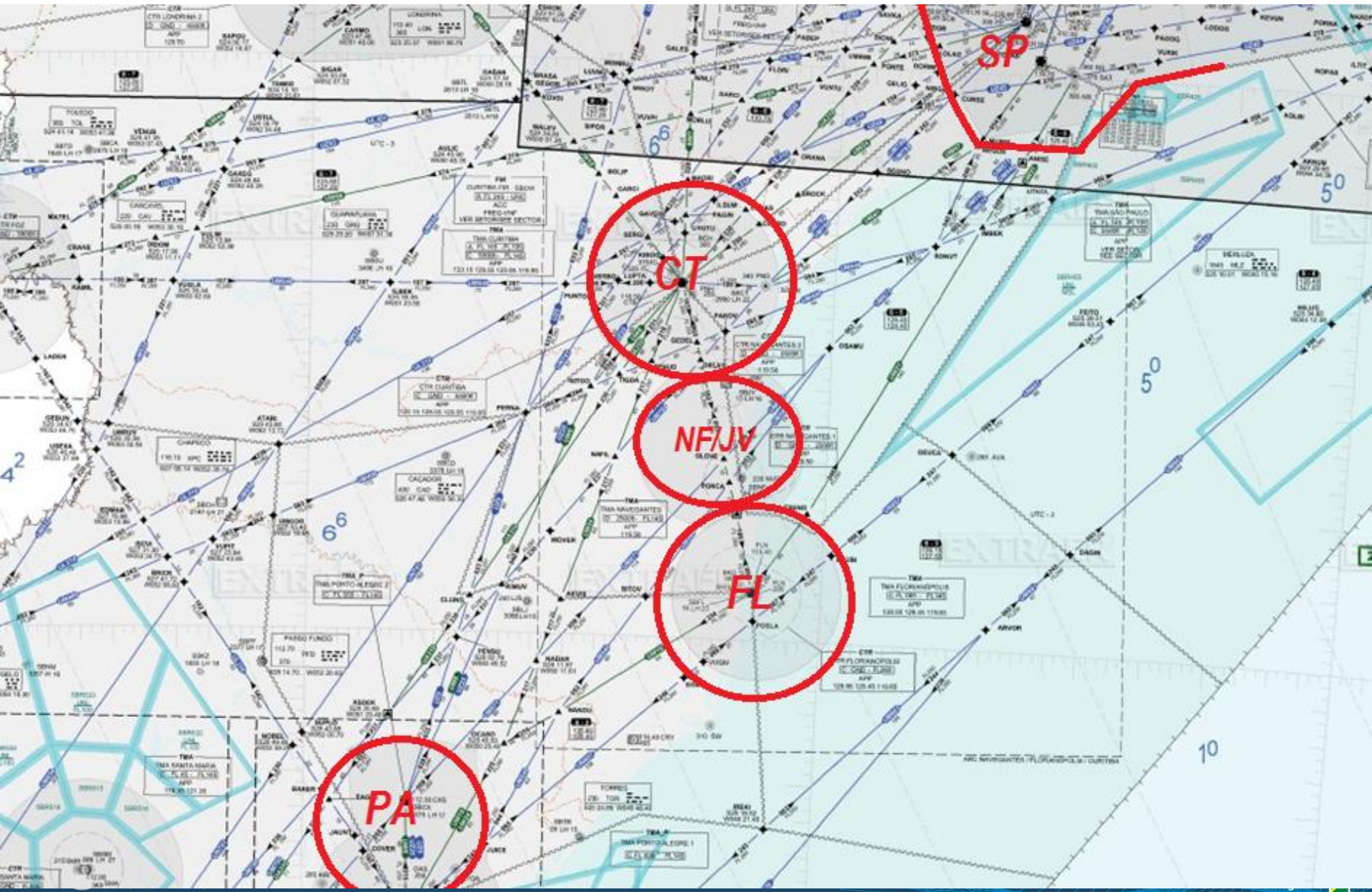
Presentar las acciones actuales del proyecto PBN
Sur.



Guión

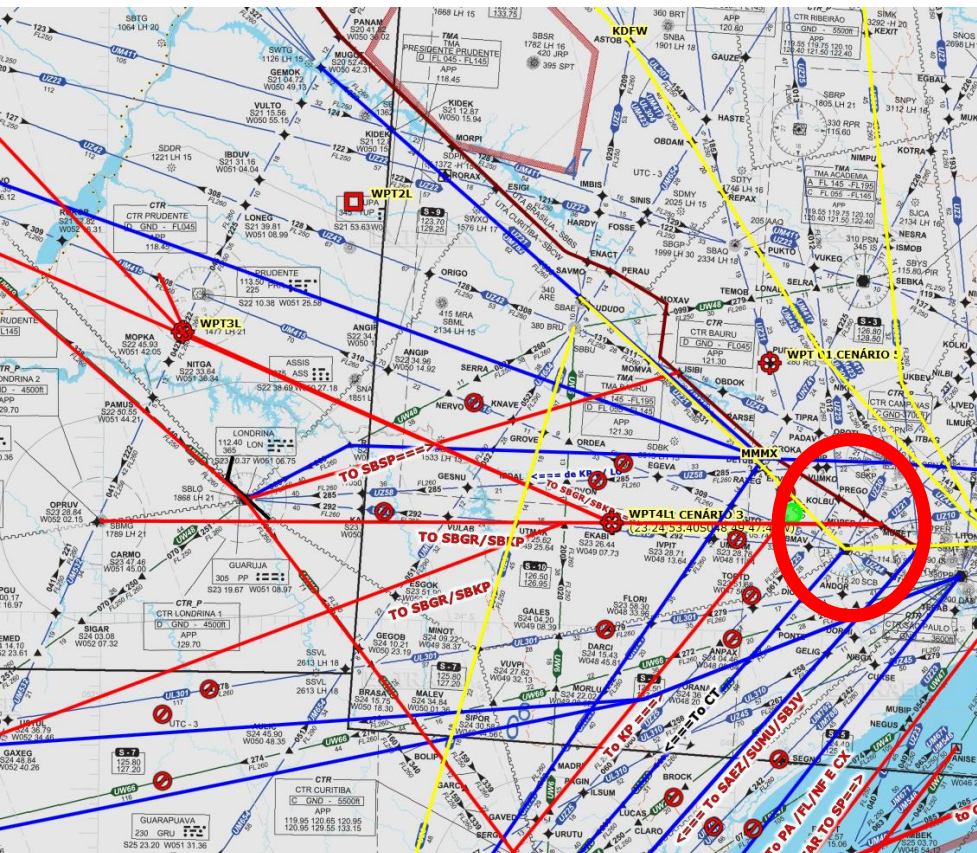
- Resultados STA
- Plan de STR
- Simulación en tiempo real (STR)
- Proyector PBN SUL

ESCENARIO ACTUAL

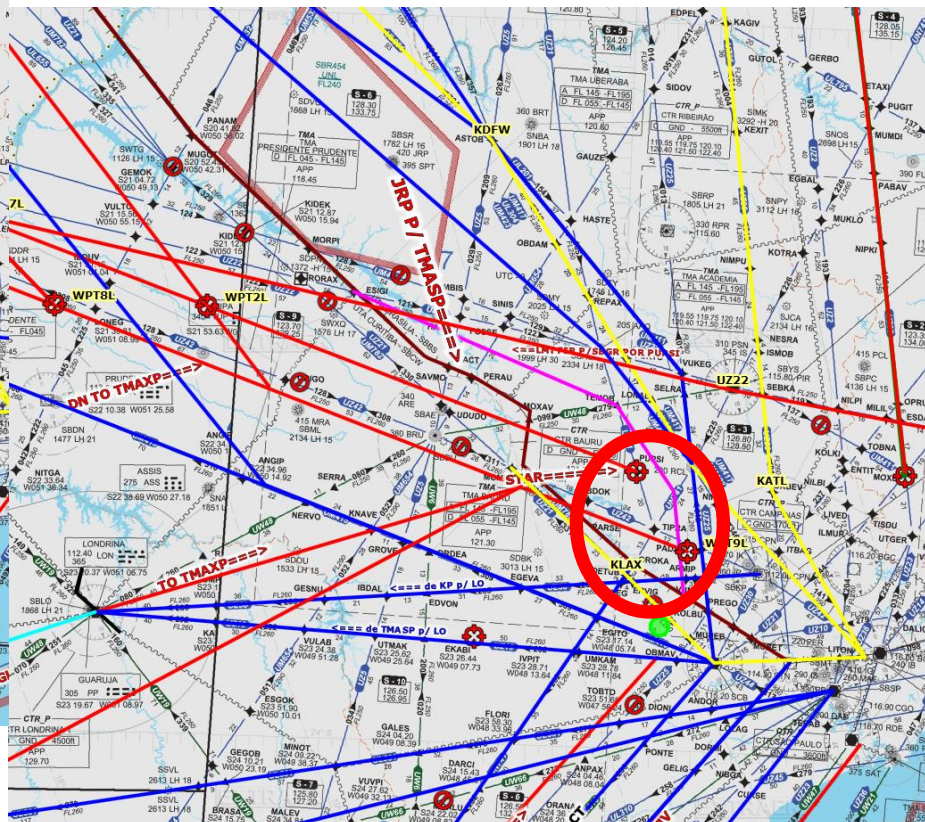


ESCENARIOS

ESCENARIO 3



ESCENARIO 5



CARGA DE TRABAJO

POR LA CARGA DE TRABAJO DEL SECTOR

SECTOR	ESCENARIO	SOMA DÍA	AVIONES PARA LA MEDIA
CW01	CEN 111	191,47	0,65
	CEN 333	209,56	0,71
	CEN 555	209,99	0,71



SEVERIDAD DEL LOS CONFLICTOS

SEVERIDAD DEL LOS CONFLICTOS

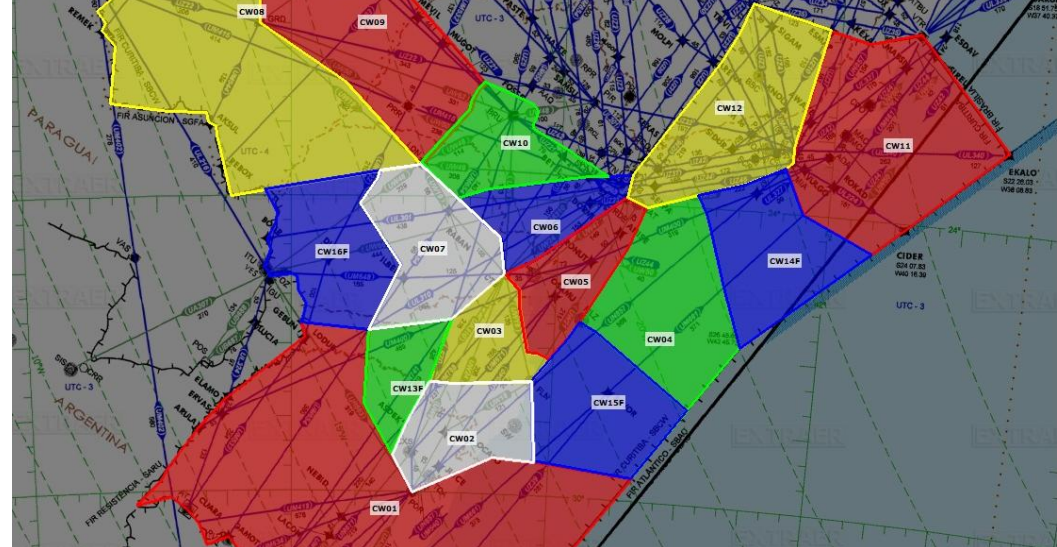
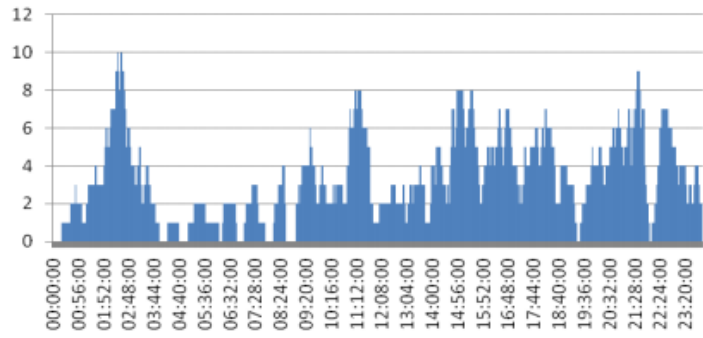
SEVERIDAD	0	1	2	3
PORCENTAJE	COLISION	<20%	20- 50%	50-100%
PARÁMETROS	SEPARACIÓN: HORIZONTAL 5 NM, VERTICAL 1000 FT			

CW04	Cen 1	0	0	0	1
	Cen 33	0	0	1	0
	Cen 55	0	0	0	0
CW05	Cen 1	0	0	2	5
	Cen 33	0	1	0	2
	Cen 55	0	0	0	3



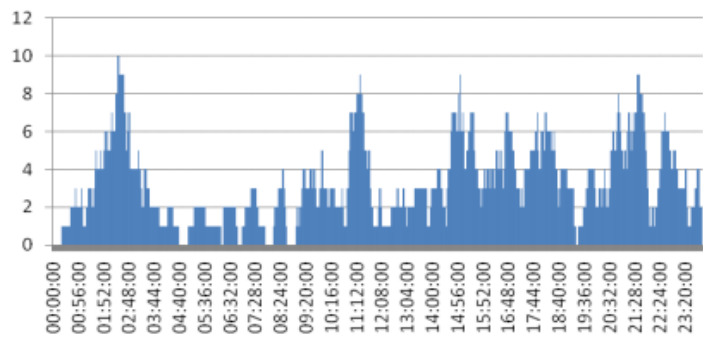
0,61

CW_01 Cenário 111 S=0



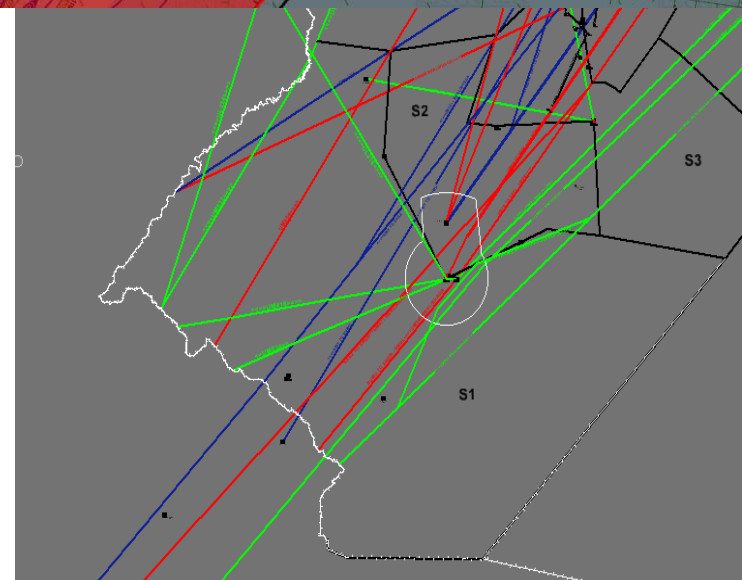
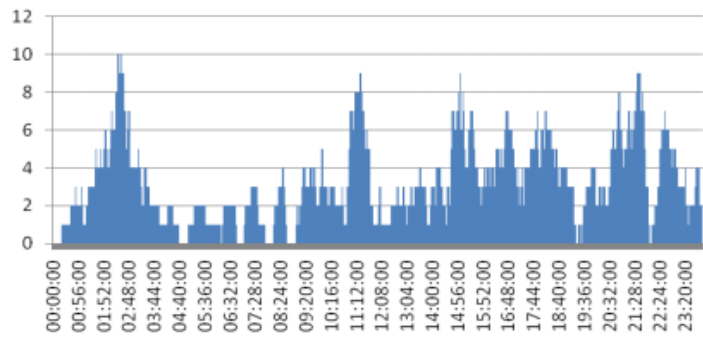
0,68

CW_01 Cenário 333 S=0 +

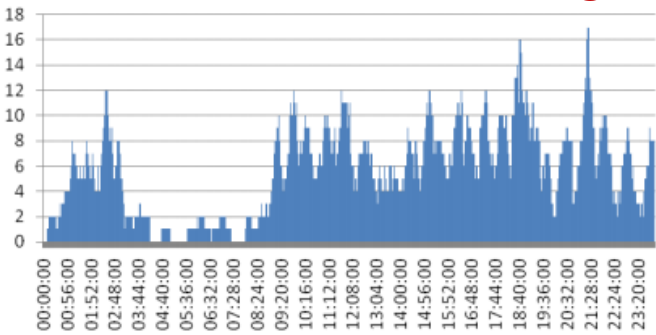


0,69

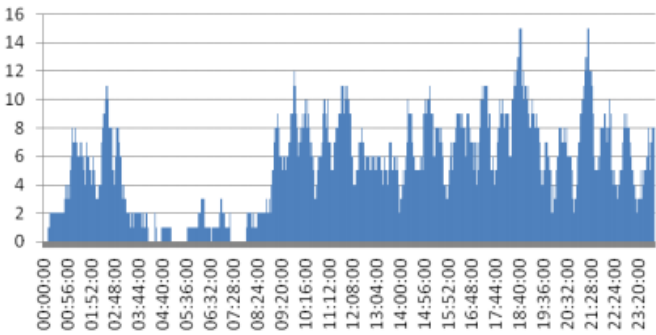
CW_01 Cenário 555 S=0 +



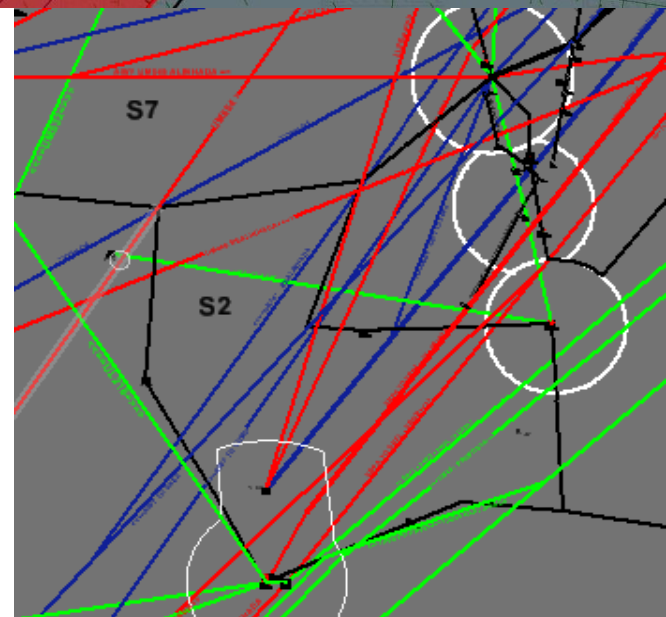
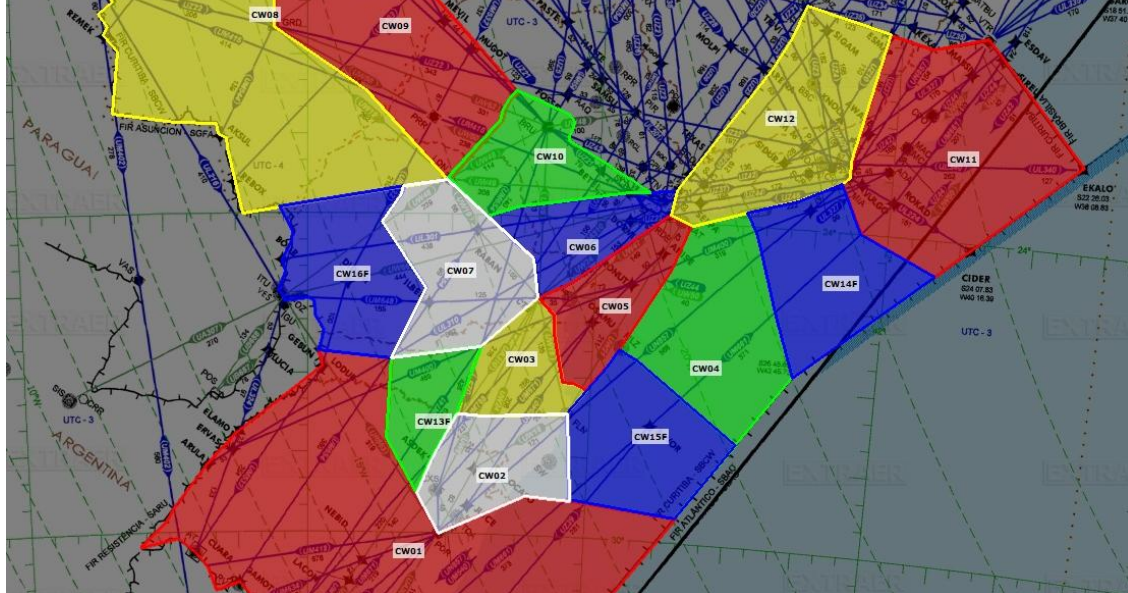
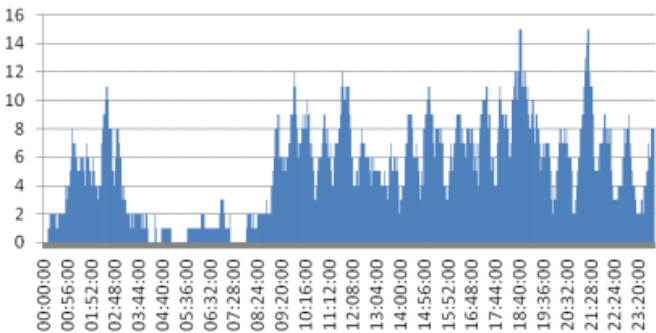
2,21 CW_02 Cenário 111 --S



2,07 CW_02 Cenário 333



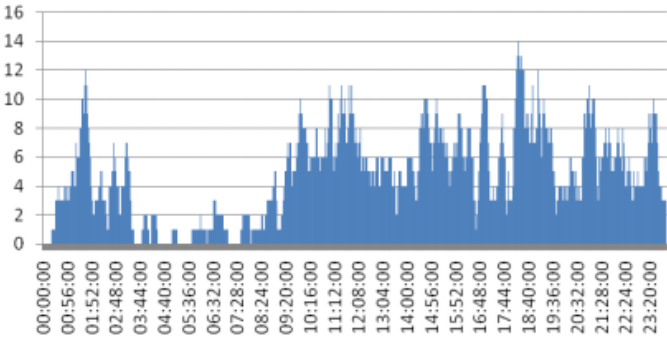
2,02 CW_02 Cenário 555 -S +



2,18

CW_03 Cenário 111

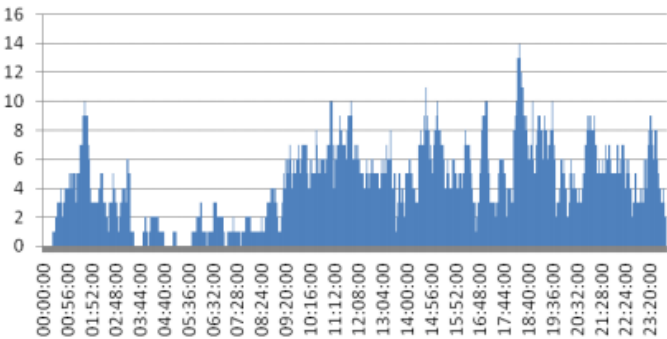
--S



2,06

CW_03 Cenário 333

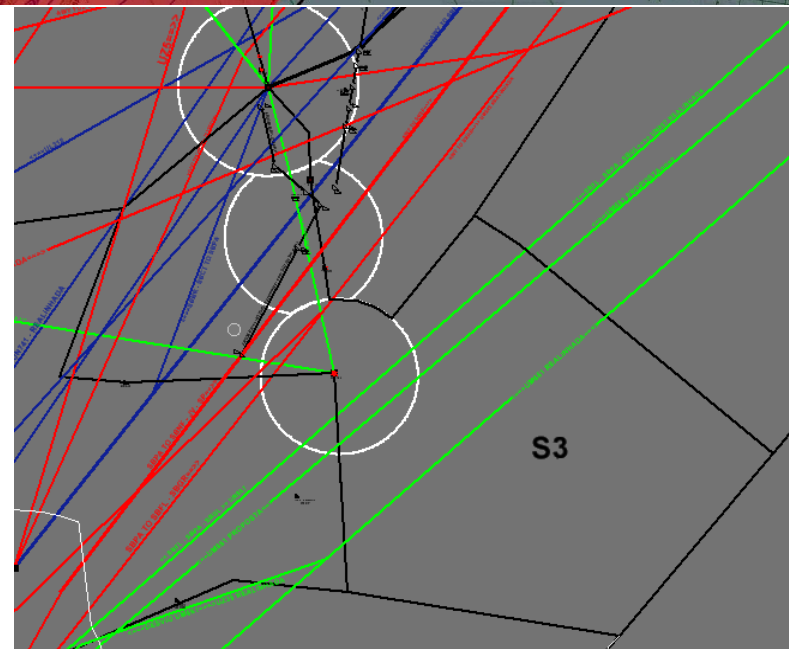
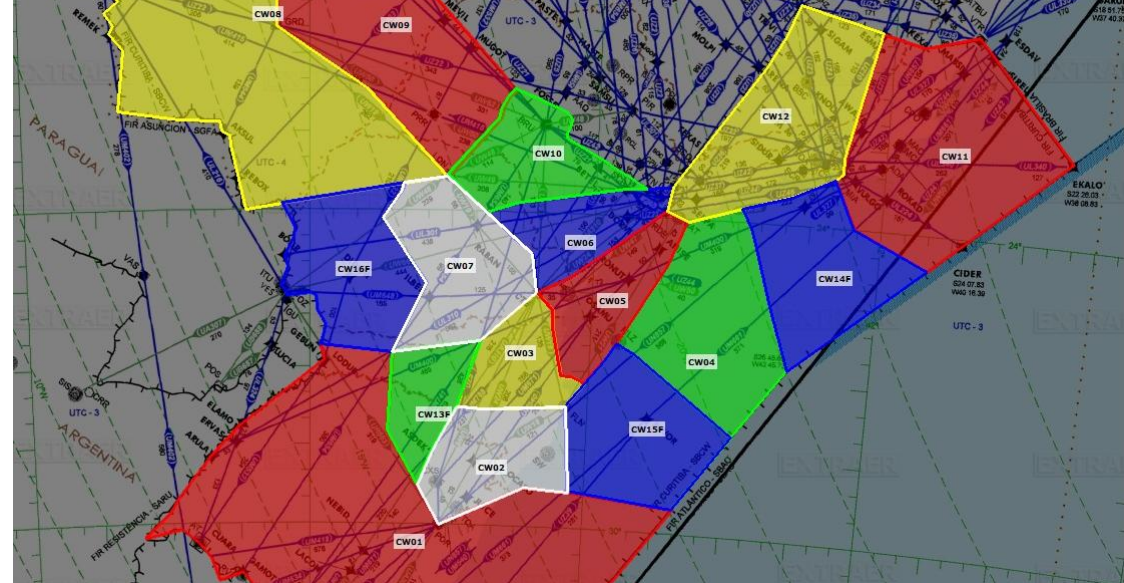
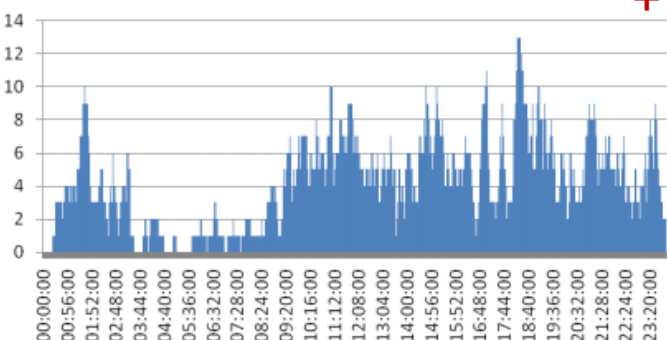
-S



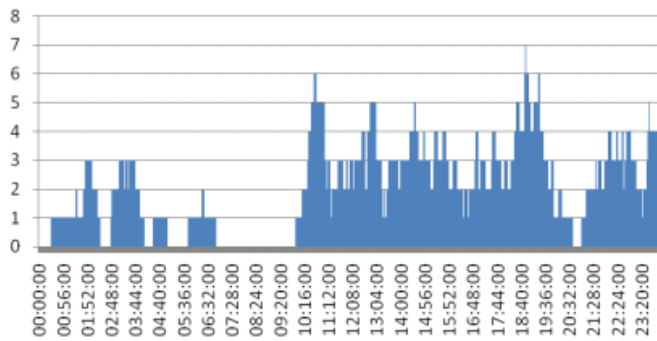
2,08

CW_03 Cenário 555

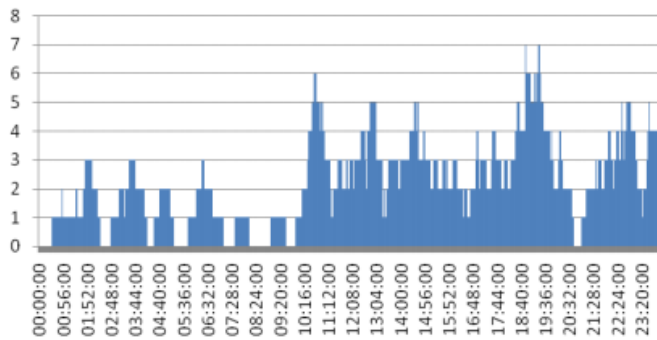
+



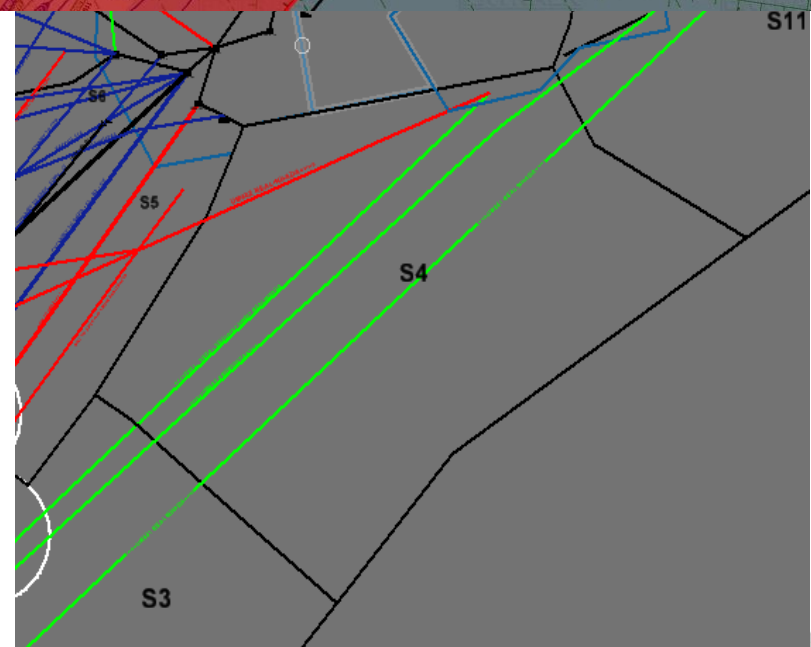
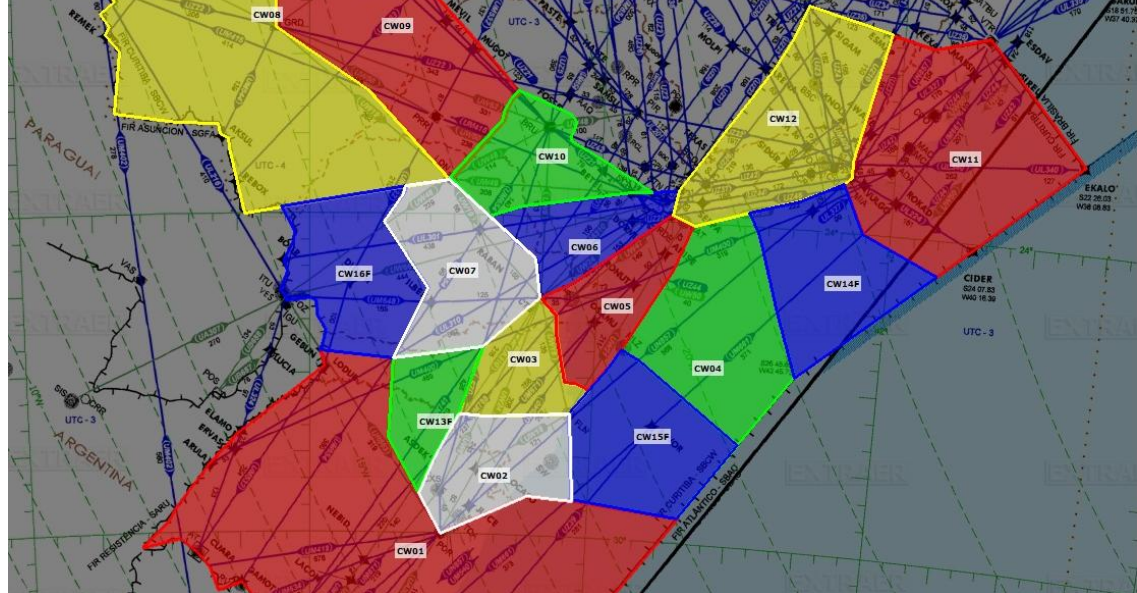
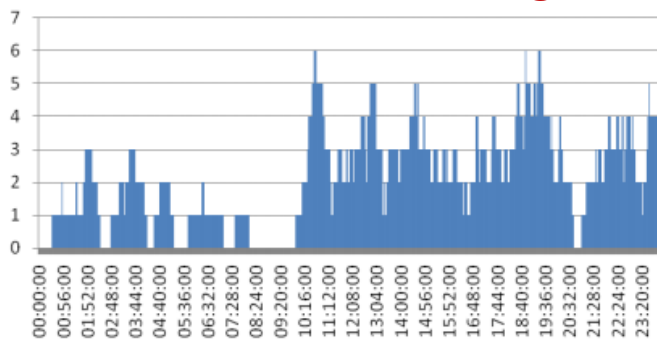
0,61 CW_04 Cenário 111 --S



0,65 CW_04 Cenário 333 -S

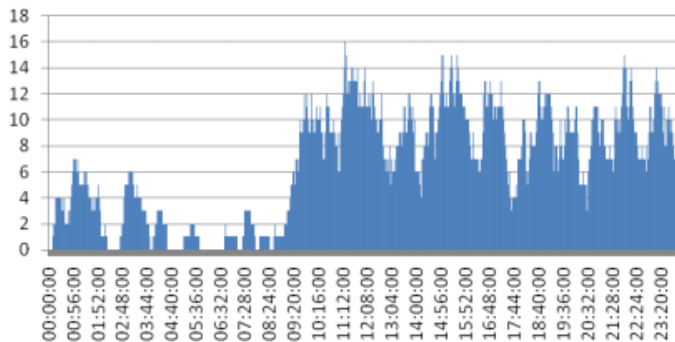


0,59 CW_04 Cenário 555 -S +



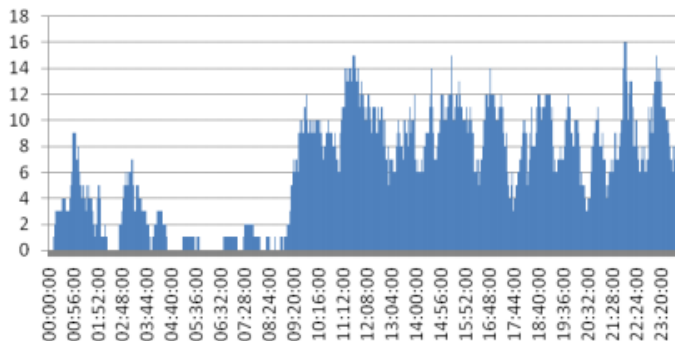
1,77

CW_05 Cenário 111



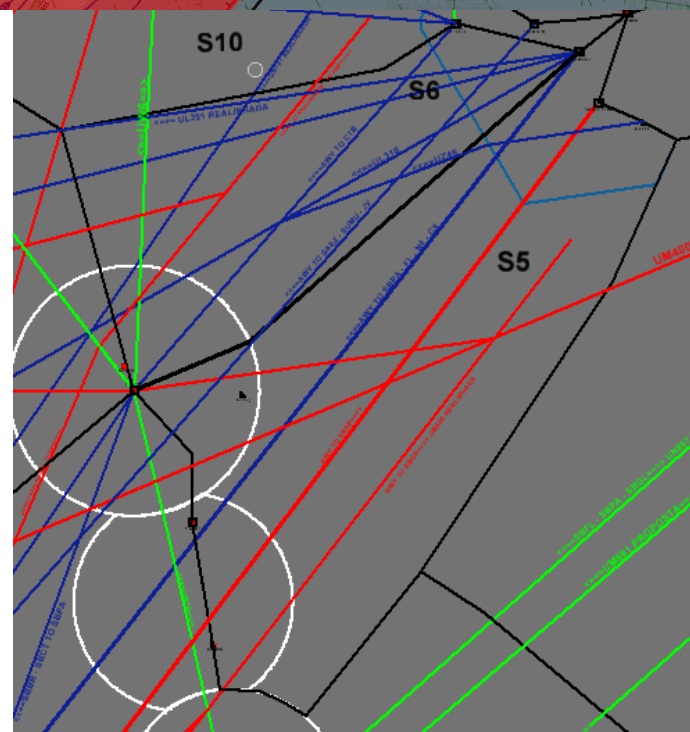
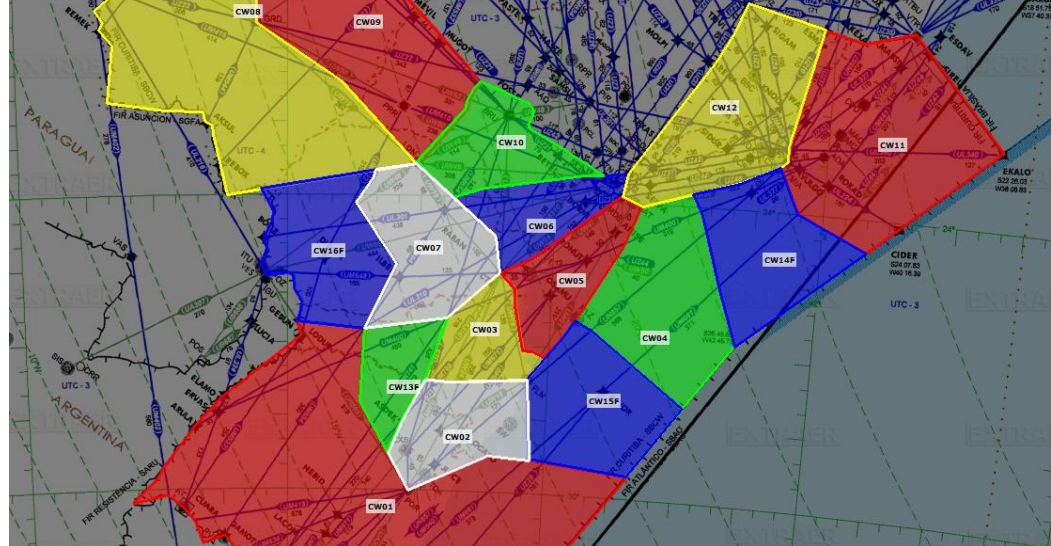
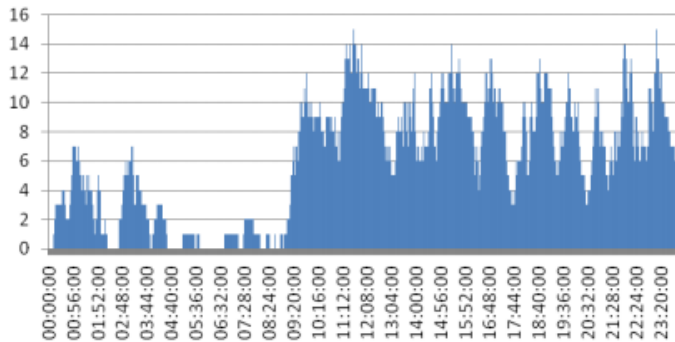
1,32

CW_05 Cenário 333

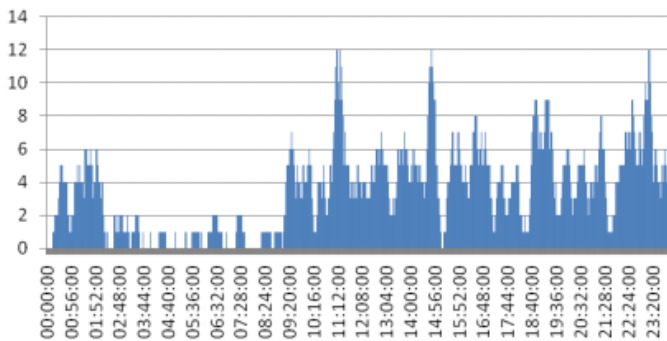


1,18

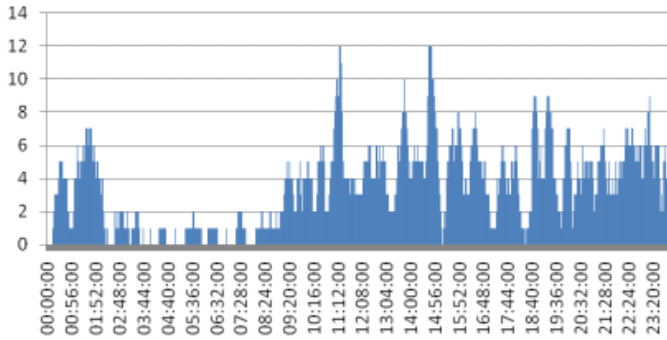
CW_05 Cenário 555 -S +



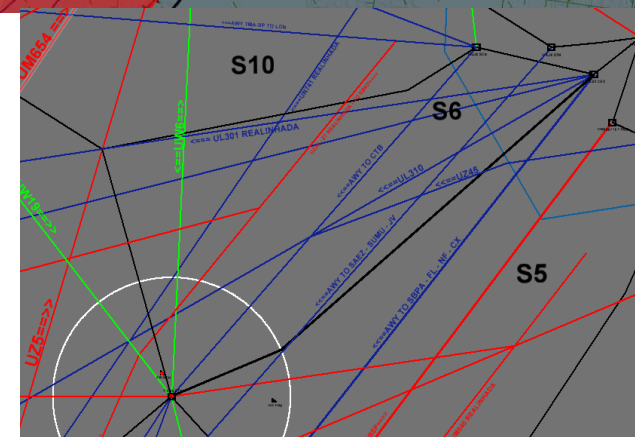
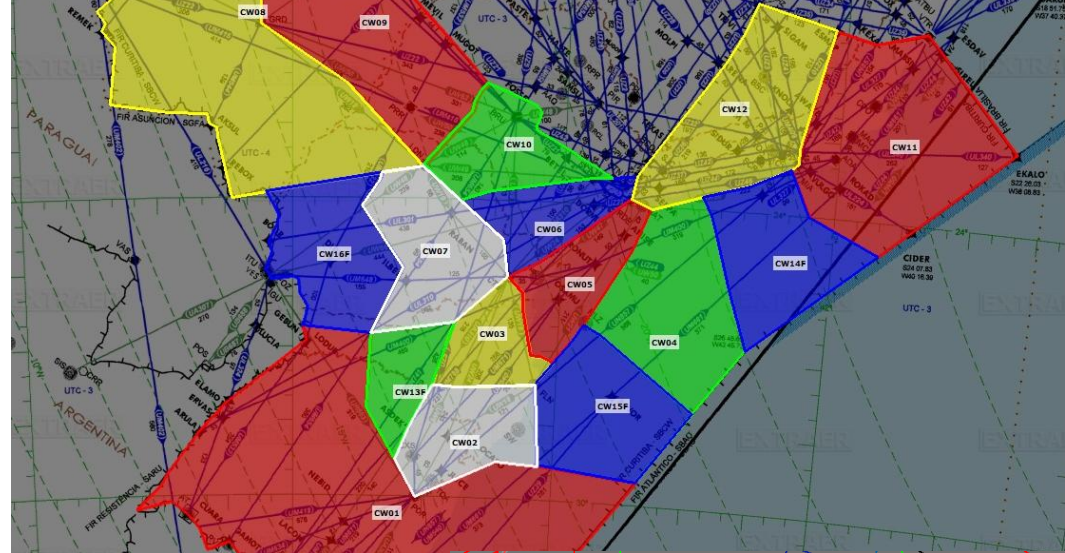
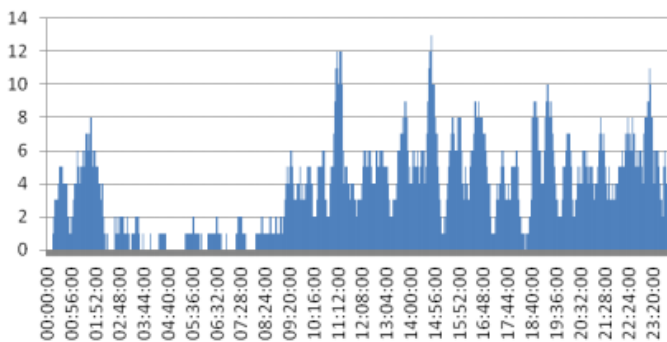
2,82 CW_06 Cenário 111



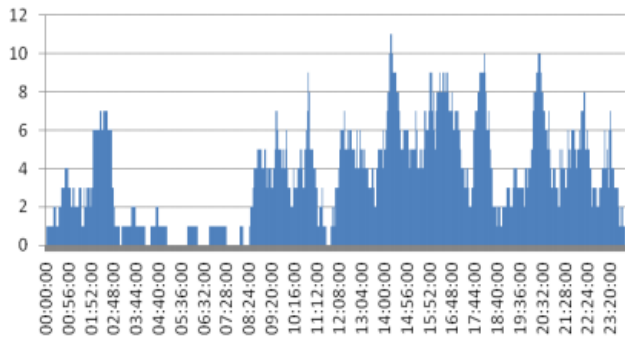
2,54 CW_06 Cenário 333



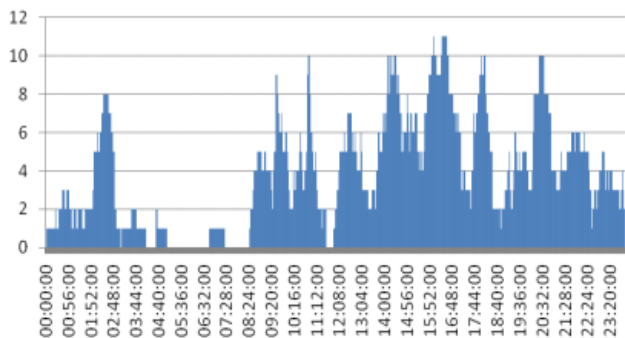
2,60 CW_06 Cenário 555 -S



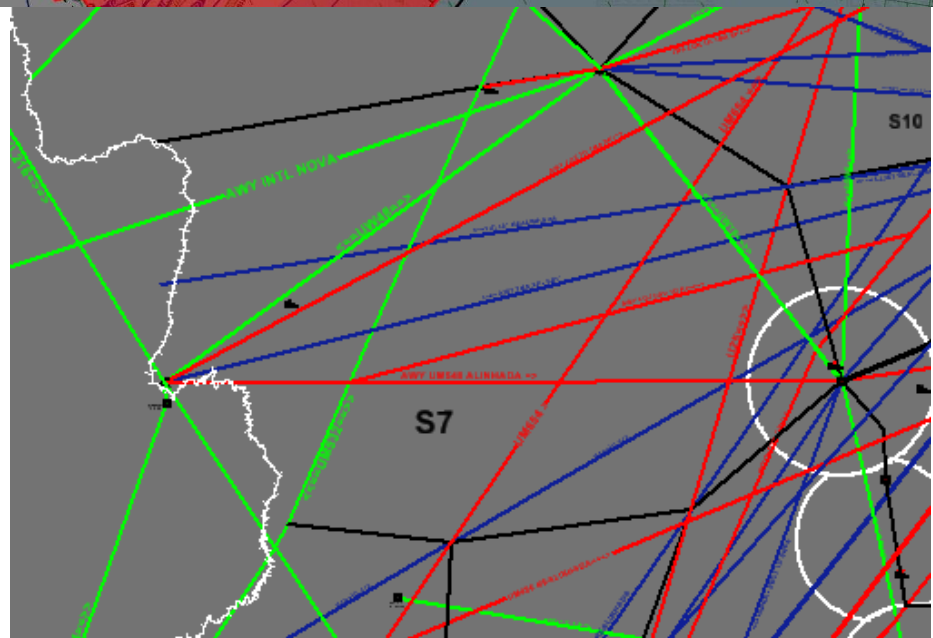
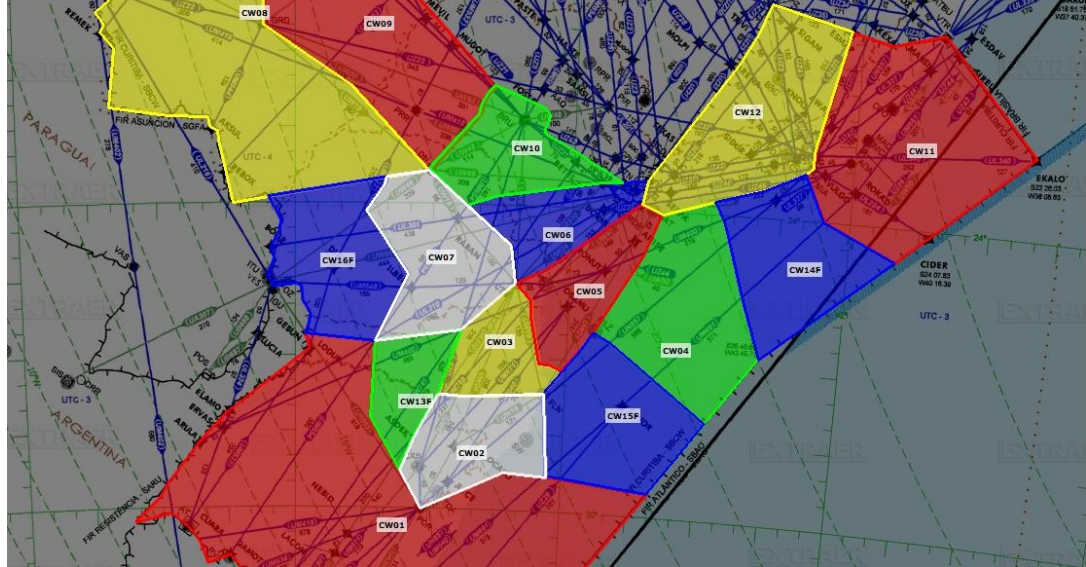
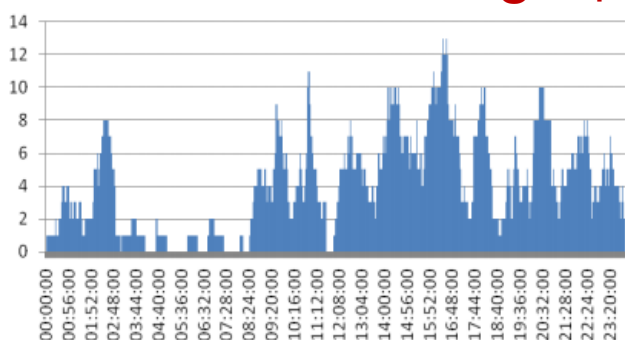
0,92 CW_07 Cenário 111



0,88 CW_07 Cenário 333 +

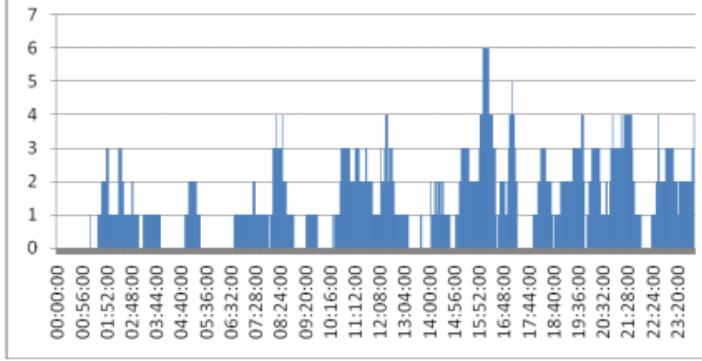


0,88 CW_07 Cenário 555 -S +



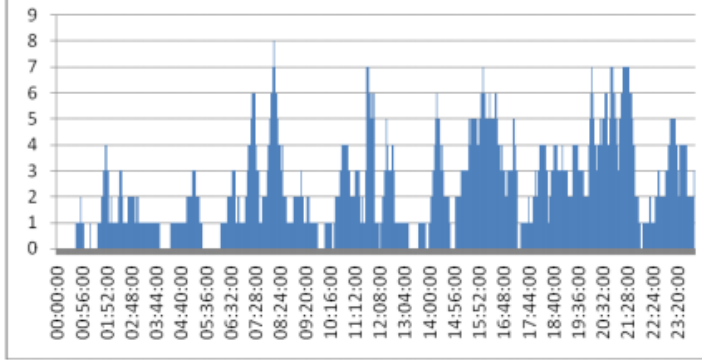
0,81

CW_08 Cenário 111 S=0



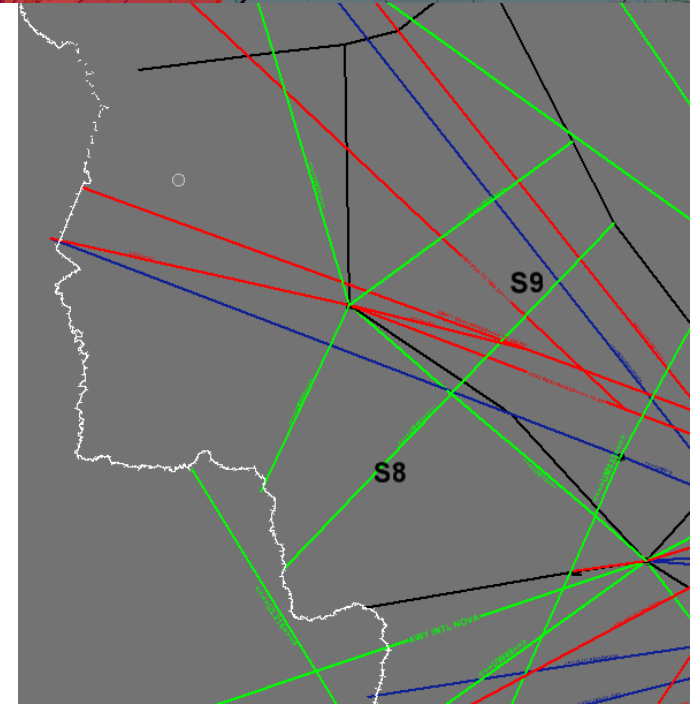
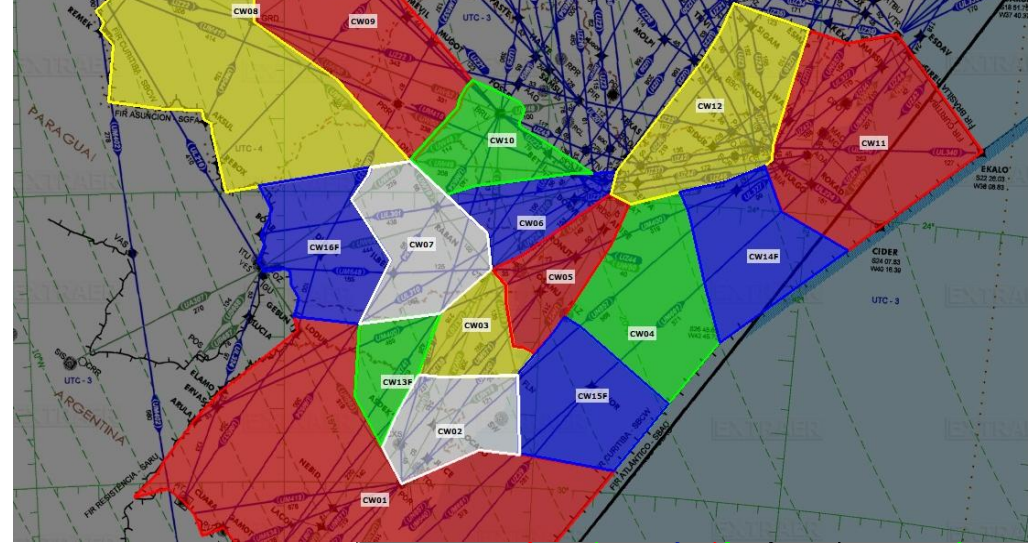
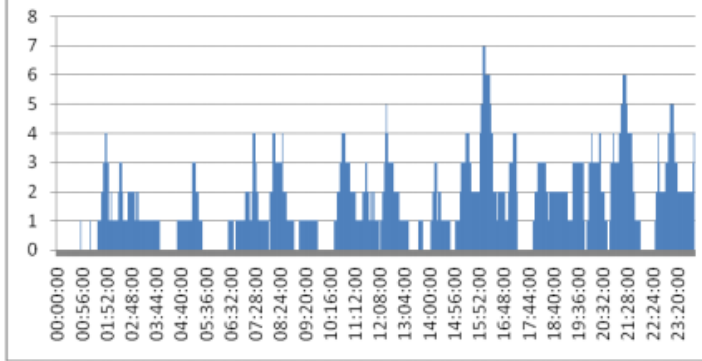
1,32

CW_08 Cenário 333 S=0

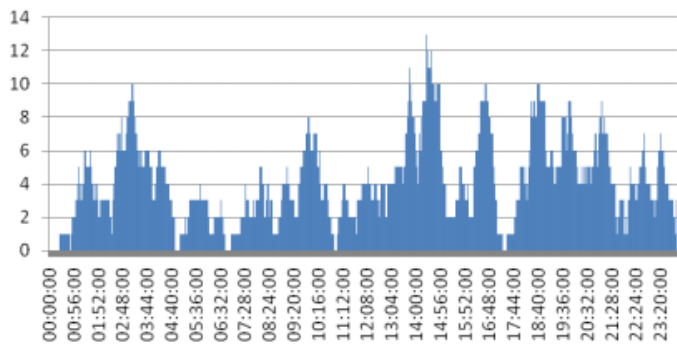


0,96

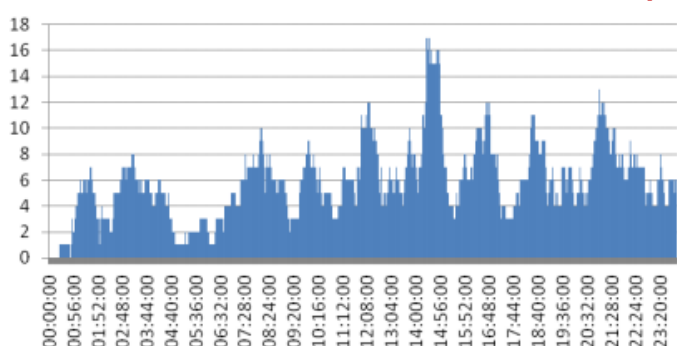
CW_08 Cenário 555 S=0 +



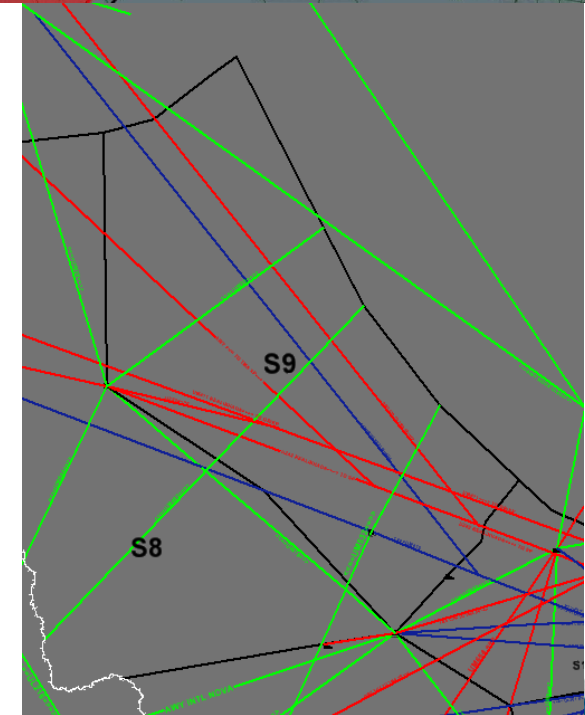
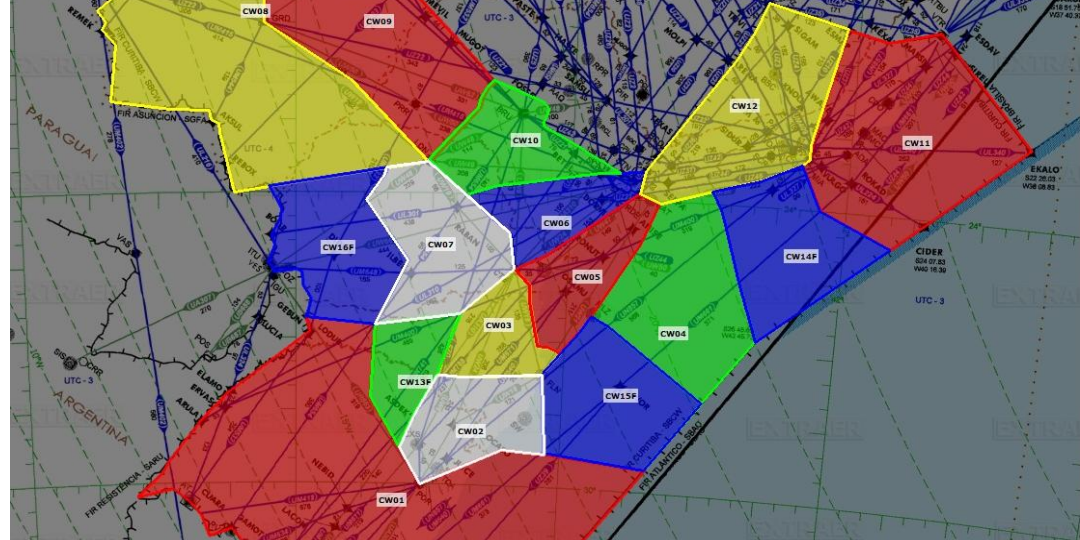
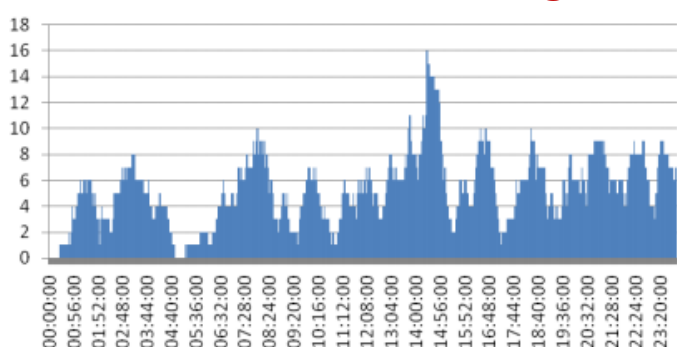
0,96 CW_09 Cenário 111 -S



0,67 CW_09 Cenário 333 +

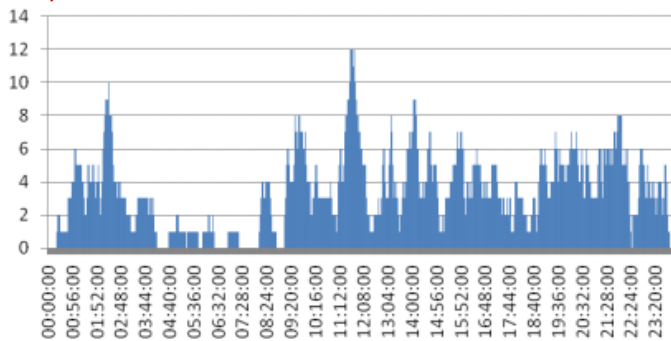


0,72 CW_09 Cenário 555 -S +



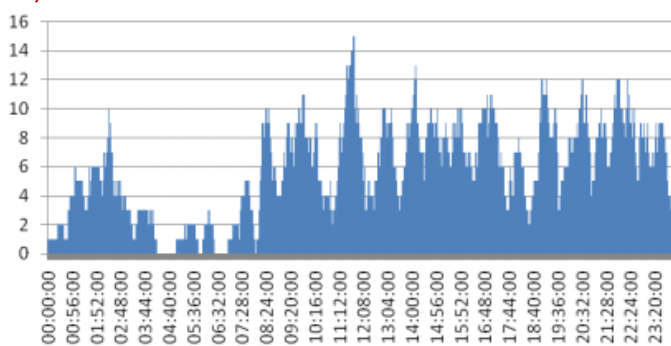
1,85

CW_10 Cenário 111 --S



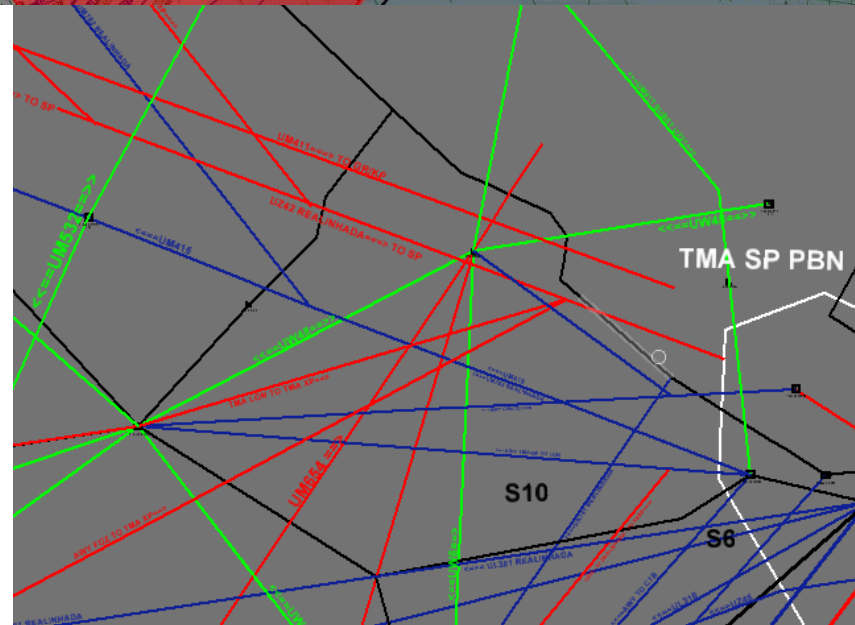
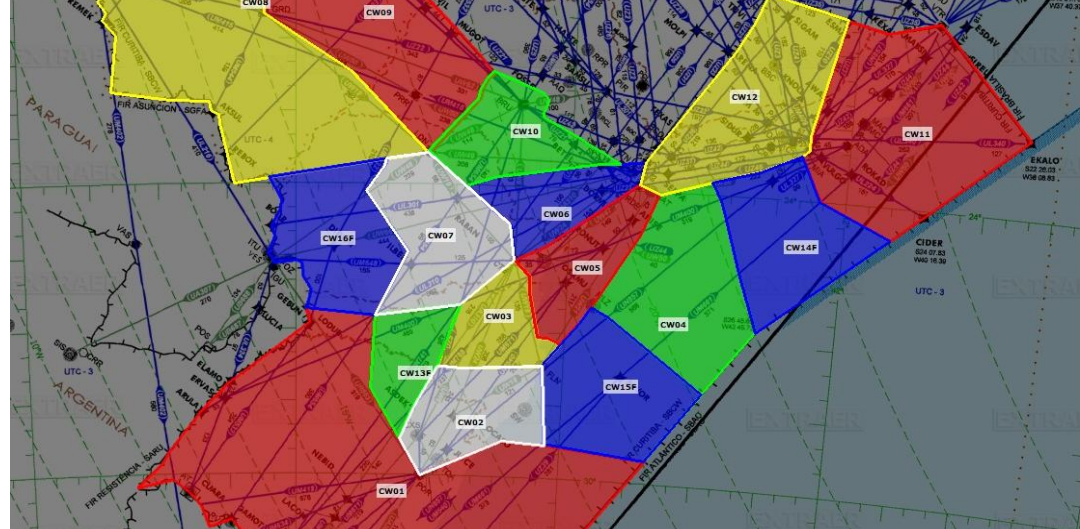
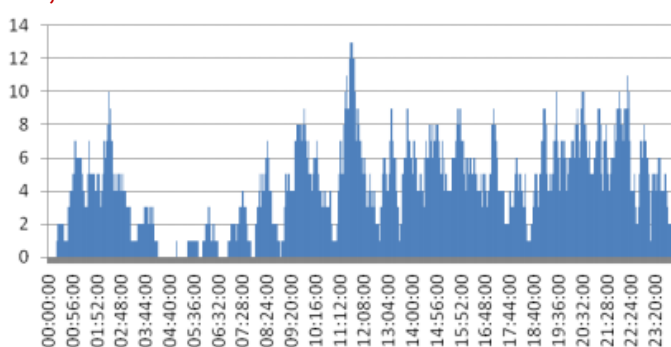
1,71

CW_10 Cenário 333



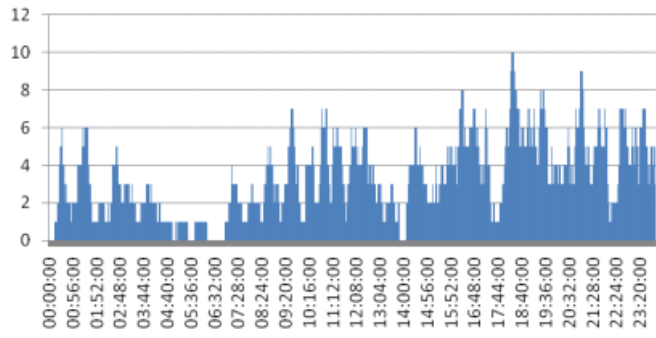
2,04

CW_10 Cenário 555 -S +



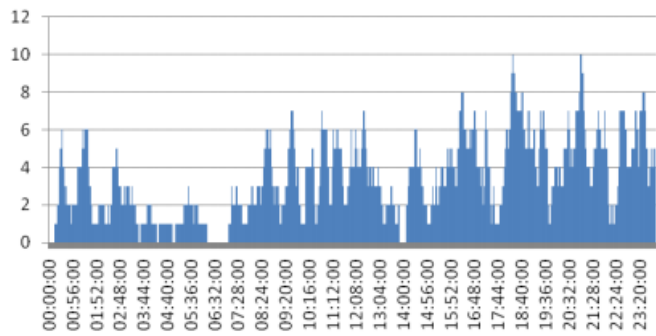
2,13

CW_11 Cenário 111



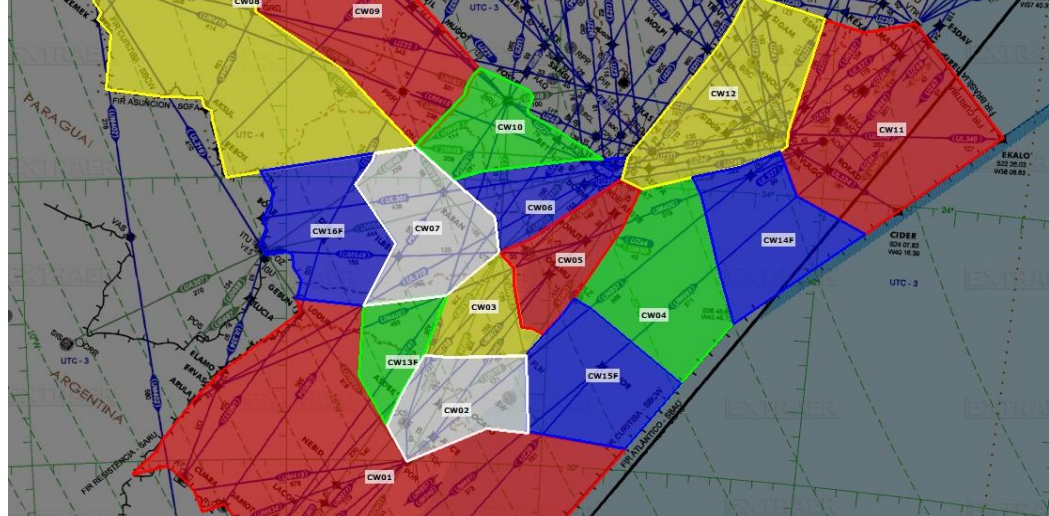
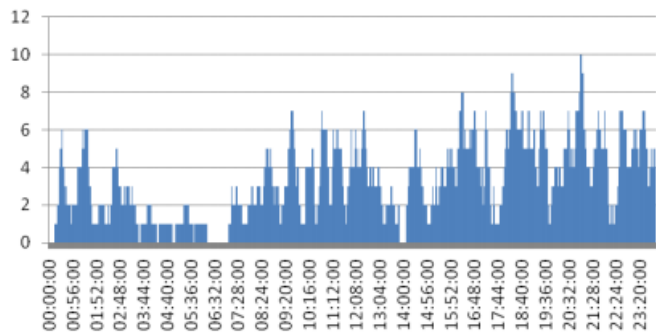
2,34

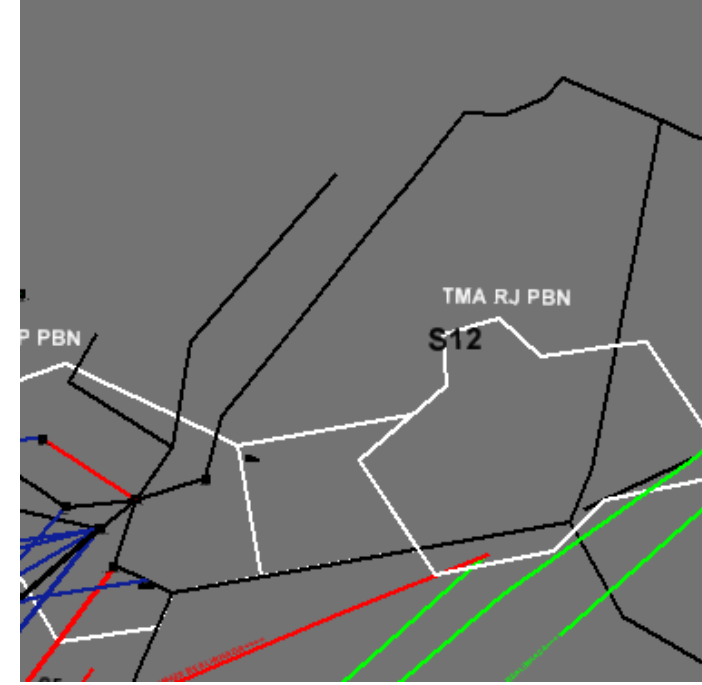
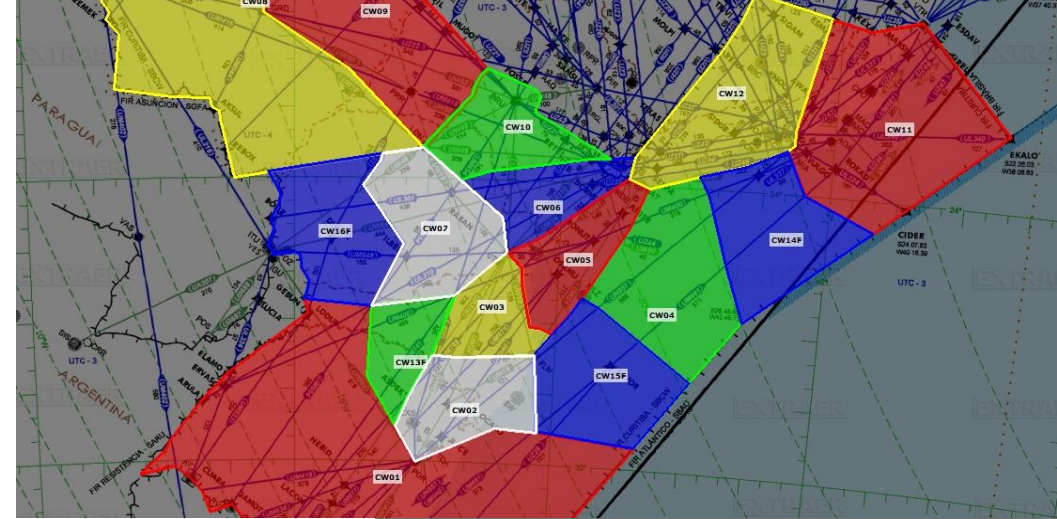
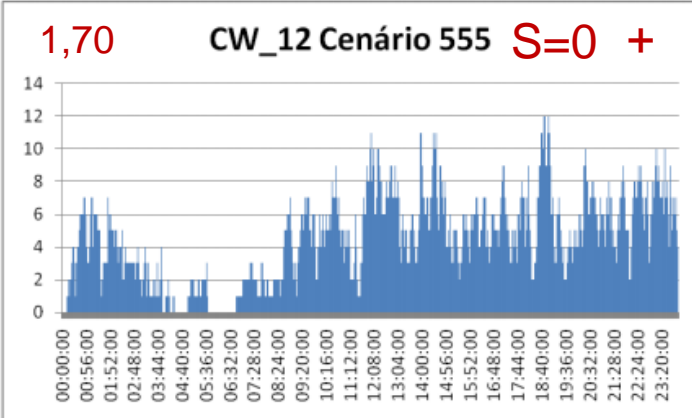
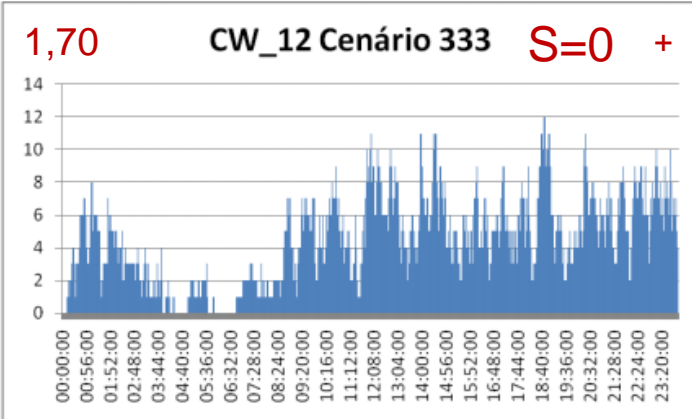
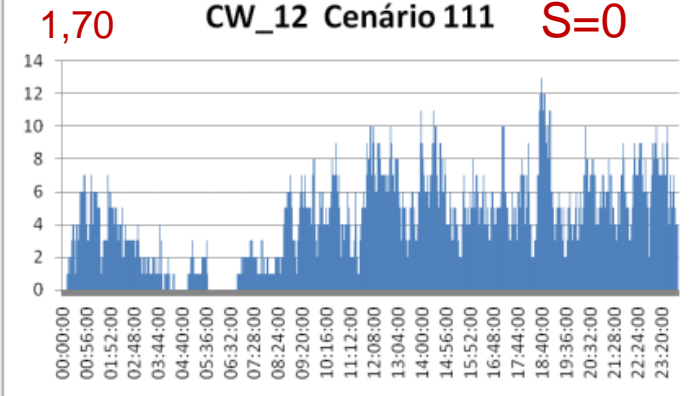
CW_11 Cenário 333 -S +



2,36

CW_11 Cenário 555 -S +





SIMULACIÓN EN TIEMPO REAL (STR)

- ✓ Hay cuatro habitaciones simulación, con 08 posiciones cada una;
- ✓ Un ACC CW simulación, APP CT, FL, PA y FI;
- ✓ Una simulación APP São Paulo;
- ✓ De lunes a viernes, mañana y la tarde;
- ✓ Exercício 01:30 h - Escenario actual y el nuevo escenario en mañana y la tarde se repite;

SIMULACIÓN EN TIEMPO REAL (STR)

- ✓ Aumento 10% en el volumen de tráfico el martes y el miércoles;
- ✓ Jueves y Viernes y simulación fijan el ACC CW con APP; e
- ✓ Jueves y Viernes simulación juntos la APP-SP / ACC CW y e
ACC BS.

PROYECTOR PBN SUL

506 cartas

✓ **359 cartas AMDT**

✓ **147 cartas Draft**

✓ **+ Cartas ENRC L e H**

✓ **+ AIP BRASIL**

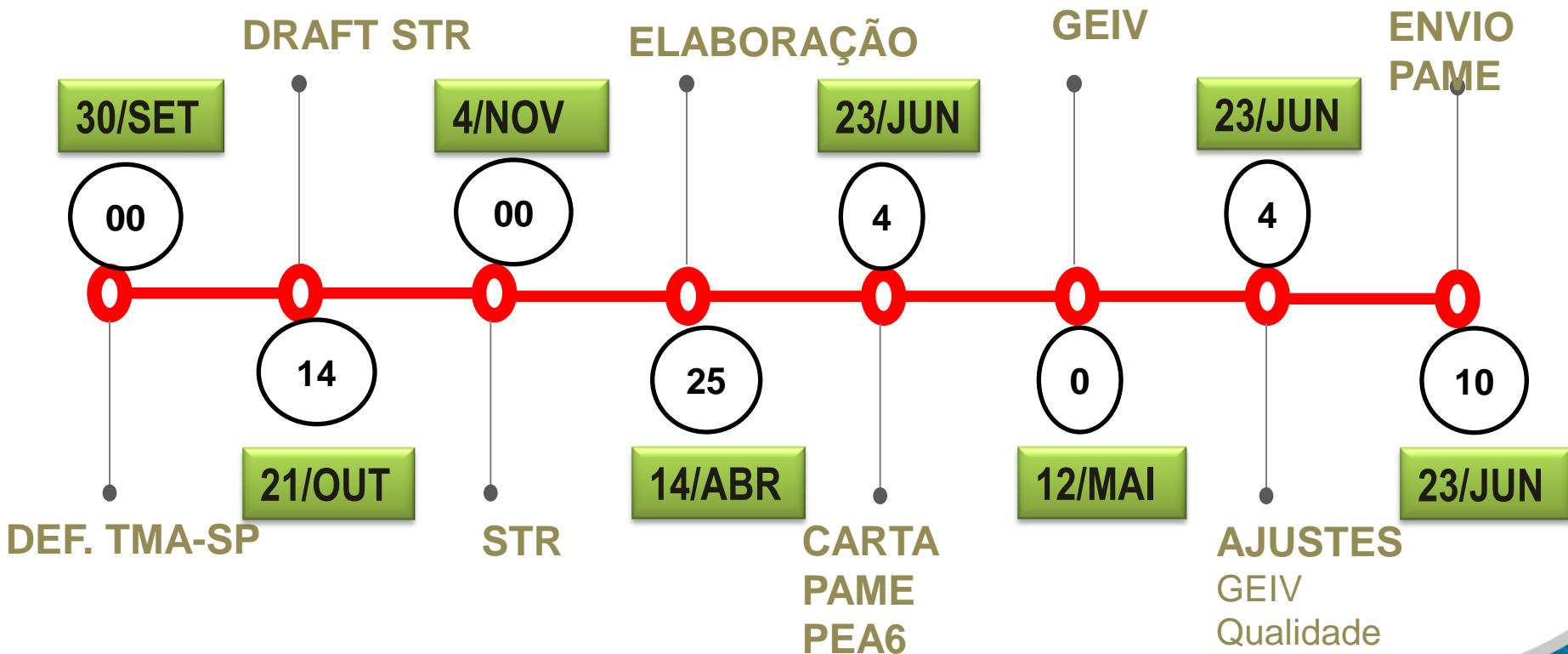


PROYECTOR PBN SUL

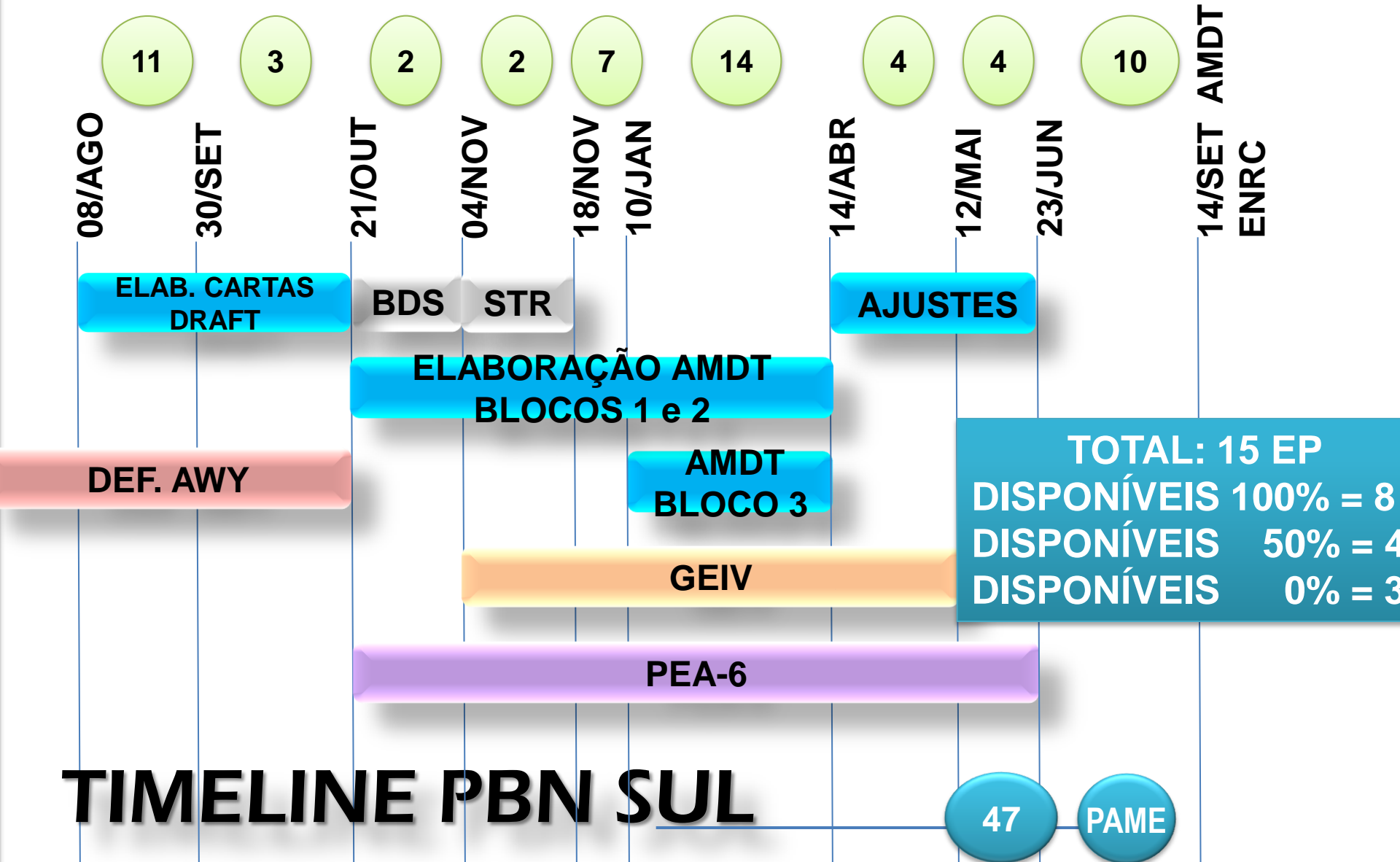
TIMELINE PBN SUL

47 semanas

EFFECTIVE DATE
PREVISTA
14 SET 17



PROYECTOR PBN SUL



TIMELINE PBN SUL

PROYECTOR PBN SUL COMPARACIÓN

PBN
RJ/SP

- 16 EP
- **146** cartas novas AMDT
- Aproxim. **77** semanas

PBN
SUL

- 15 EP
- **359** cartas novas AMDT
- PREDICCIÓN **47** semanas

EFFECTIVE DATE
PREVISTA

14 SET 17