



**Agenda Item 2: Large Height Deviation (LHD) analysis**

**SAFETY ASSESSMENT IN RVSM AIRSPACE OF THE CAR/SAM FIRs**

(Presented by CARSAMMA)

<b>SUMMARY</b>	
This paper presents a summary of Large Height Deviation (LHD) reports received by CARSAMMA, and their analysis using the SGSO/SMS methodology advocated by ICAO and endorsed by the GREPECAS meeting, which recommended its use by CARSAMMA in the CAR/SAM Regions.	
<b>References:</b>	
<ul style="list-style-type: none"><li>• ICAO SGSO Manual.</li><li>• Large Height Deviation (LHD) reports in 2014.</li></ul>	
<b>ICAO strategic objectives:</b>	<i>A - Safety</i>

1. **Background**

1.1. The CAR/SAM Regional Planning and Implementation Group (GREPECAS) entrusted the Caribbean and South American Monitoring Agency (CARSAMMA) with the implementation of the SGSO/SMS methodology for LHD analysis. CARSAMMA is an administrative agency under the *Departamento de Controle do Espaço Aéreo (DECEA)*, a body of the Brazilian Airspace Control System (SISCEAB).

1.2. SGSO is used for estimating the system risk value.

1.3. An extremely important element when using SGSO for LHD analysis is the risk assessment and quick trend identification system, as well as the critical points where they occur, thus reducing system safety calculation time.

1.4. The purpose of this work is to offer a summary of the safety assessment conducted in RVSM airspace of the CAR/SAM FIRs. The safety assessment was conducted for an operational period of twelve consecutive months.

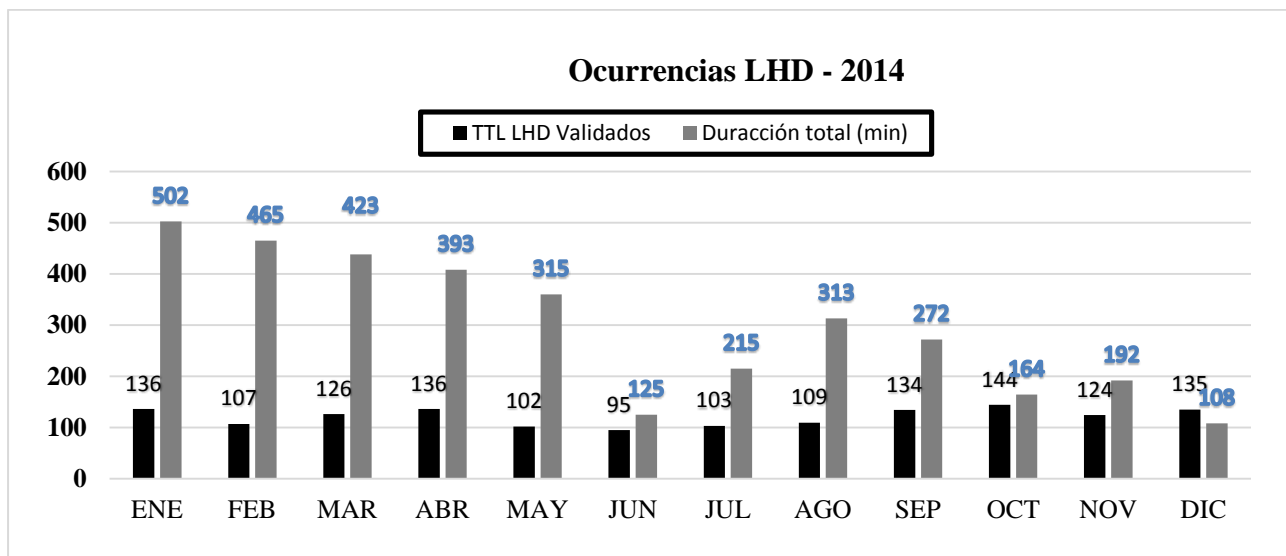
## 2. Discussion

2.1. A series of LHD reports accumulated over a period of 12 months between January and December 2014 was used for this safety assessment.

2.2. **Table 1** and **Graph 1** summarise the validated LHD occurrences and their duration (in minutes), per month.

MONTH	Number of LHDs	Total DURATION (min.)	Median DURATION	Median RISK	Higher RISK
JANUARY	136	502	3,69	26,3	51
FEBRUARY	107	465	4,35	26,7	58
MARCH	126	423	3,36	26,1	51
APRIL	136	393	2,89	24,9	51
MAY	102	315	3,09	25,5	51
JUNE	95	125	1,32	23,1	39
JULY	103	215	2,09	22,9	45
AUGUST	109	313	2,87	23,9	51
SEPTEMBER	134	272	2,02	23,6	46
OCTOBER	144	164	1,14	23,9	45
NOVEMBER	124	192	1,55	23,3	50
DECEMBER	135	108	0,80	23,6	51
<b>TOTAL</b>	<b>1.451</b>	<b>3.487</b>	<b>2,43</b>	<b>24,5</b>	

*Table 1. LHD occurrences, with the duration, median duration, median risk and higher risk, per month*



*Graph 1. LHD occurrences/duration, per month*

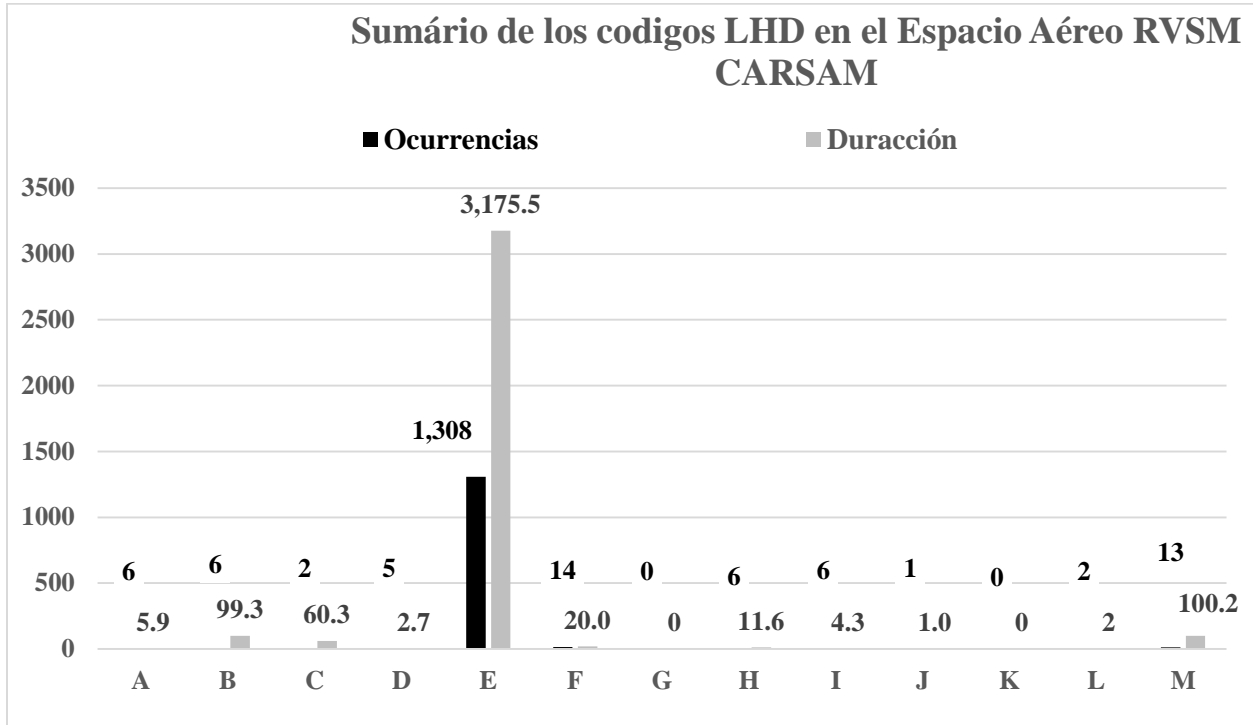
2.3. In September, there was a case in which a single LHD (report # 1126) lasted 105 minutes in the Central America FIR. The highest risk value (58 – report # 192) was observed in February, also in

the Central America FIR. From January until May, there were several long-duration LHDs at the Montevideo FIR, due to the situation already known.

2.4. **Table 2** and **Graph 2** summarise the number of LHDs, the duration (in minutes) associated to the LHD, and the number of flight levels crossed without clearance, by LHD code, from 1 January to 31 December inclusive.

<b>LHD CODE</b>	<b>Description of the LHD code</b>	<b>Number of LHDs</b>	<b>Duration of the LHD (min)</b>	<b>Levels crossed without clearance</b>
<b>A</b>	Fail to climb/descend the aircraft as cleared.	6	5.9	10
<b>B</b>	Climb/descent without clearance.	6	99.3	5
<b>C</b>	Incorrect operation or interpretation of airborne equipment (e.g., incorrect operation of fully functional FMS, incorrect transcription of ATC clearance or re-clearance, flight plan followed rather than ATC clearance, original clearance followed instead of re-clearance, etc.)	2	6.3	3
<b>D</b>	ATC system loop error (e.g., ATC issues incorrect clearance or flight crew misunderstands clearance message)	5	2.7	2
<b>E</b>	Coordination errors between ATC units concerning transfer or control responsibility due to human factors (e.g., late or inexistent coordination; incorrect estimated/actual time; flight level, ATS route, etc., in conflict with the agreed parameters)	1,308	3,175.5	1,327
<b>F</b>	Coordination errors in the ATC to ATC transfer or control responsibility as a result of equipment outage or technical issues.	14	20.0	7
<b>G</b>	Deviation due to aircraft contingency event leading to sudden inability to maintain assigned flight level (e.g., pressurisation failure, engine failure)	0	0.0	0
<b>H</b>	Deviation due to airborne equipment failure leading to unintentional or undetected change of flight level	6	11.6	2
<b>I</b>	Deviation due to turbulence or other weather-related cause.	6	4.3	4
<b>J</b>	Deviation due to TCAS resolution advisory; flight crew correctly following the resolution advisory.	1	1.0	0
<b>K</b>	Deviation due to TCAS resolution advisory; flight crew incorrectly following the resolution advisory.	0	0.0	0
<b>L</b>	A aircraft being provided with RVSM separation is not RVSM approved (e.g., flight plan indicating RVSM approval but aircraft not approved; ATC misinterpretation of flight plan)	2	2.0	0
<b>M</b>	Other – this includes situations of flights operating (including climbing/descending) in airspace where flight crews are unable to establish normal air-ground communications with the responsible ATS unit.	13	100.2	0
<b>Total</b>	(Jan 14 – Dec 14)	1,369	3,482.8	1,360

*Table 2. Summary of LHD occurrences and duration, by LHD code*

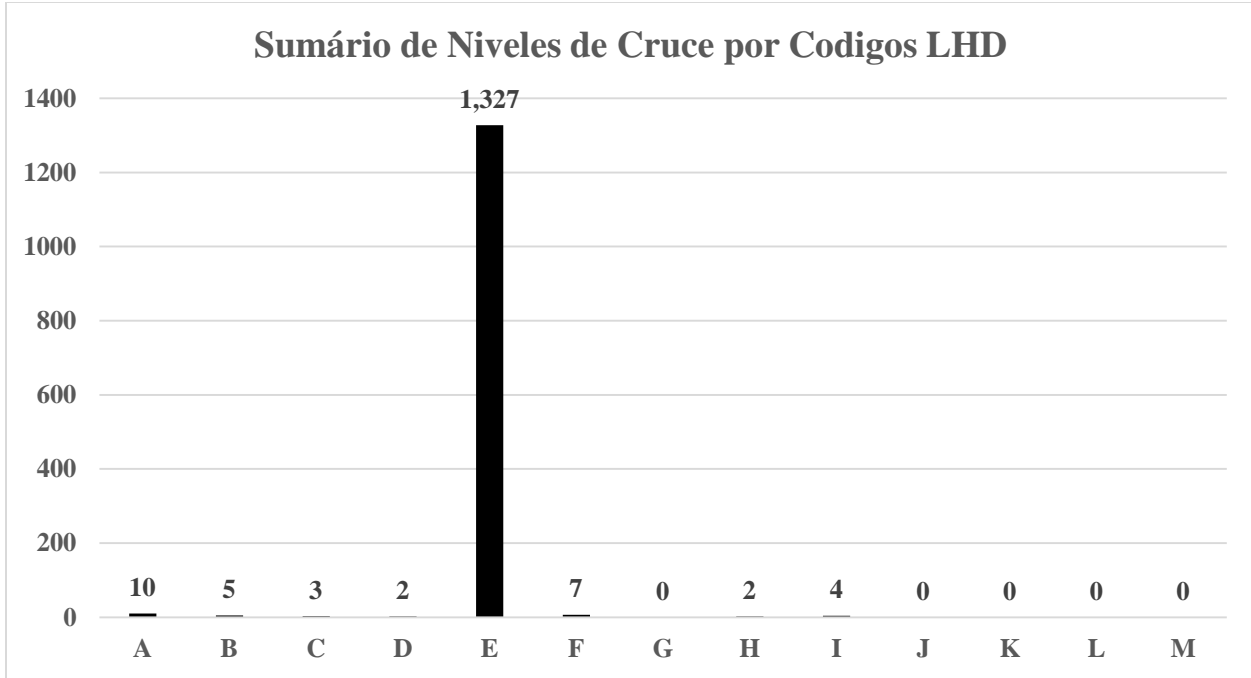


*Graph 2. Summary of LHD occurrences, by code*

2.5. E-coded LHDs (coordination error between ATCs) were the most frequent in 2014, with 1,308 events, followed by codes F (14), M (13), A, B, H and I (6). The high number of this type of LHDs (E-coded) shows the need for better coordination with the adjacent air traffic control, which could be achieved through sensitisation and training of controllers in coordination issues.

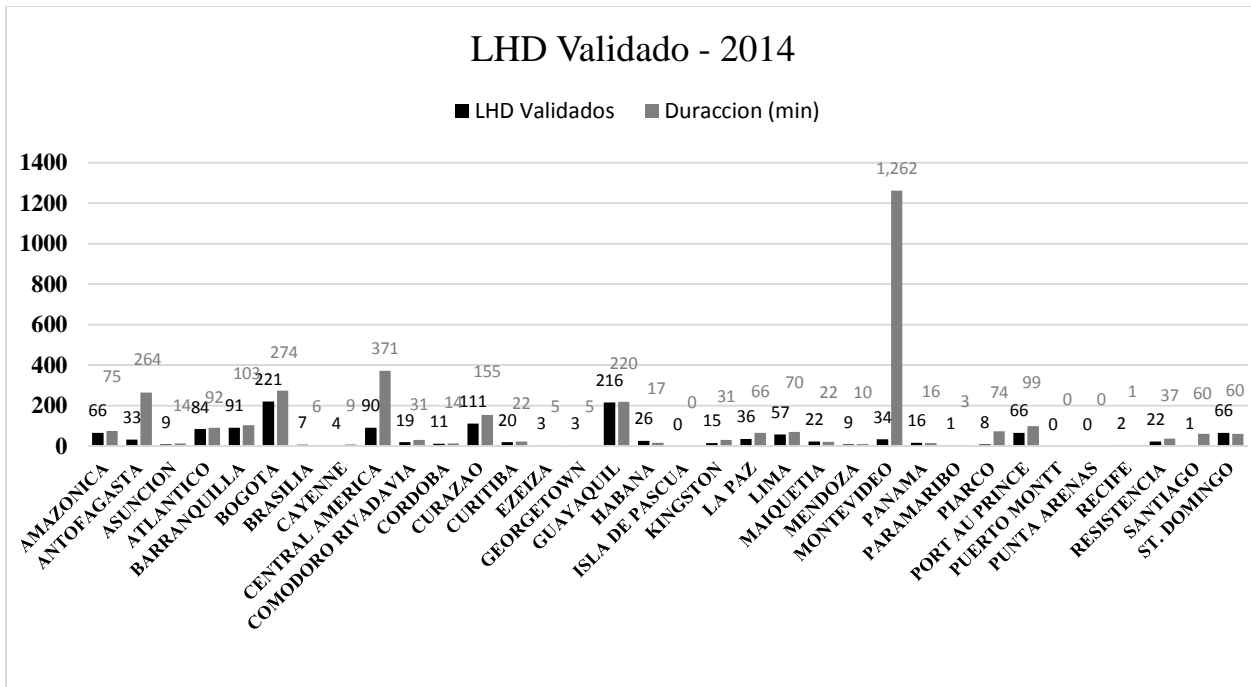
2.6. Likewise, Graph 2 shows that, in terms of duration, E-coded LHDs stood out in this analysis, with a total duration of 3,175.5 minutes. This is one of the worse air traffic incidents, since the aircraft involved were not expected in that position or at that level.

2.7. **Graph 3** shows LHDs involving crossing of levels without air traffic control clearance. In this case, E-coded LHDs prevailed, with 1,643 level crossings.



Graph 3. Summary of LHD occurrences, by levels crossed

2.8. **Graph 4** shows all validated LHDs, separated by FIR. It should be noted that the Montevideo FIR has the highest absolute duration in minutes, thereby exposing aircraft using it to a greater operational risk.



Graph 4. Summary of LHD occurrences, by FIR

### 3. Assessment of risk value (VR)

3.1. This section updates the results of the safety assessment of RVSM airspace in the CAR/SAM FIRs. Accordingly, the methodology for assessing risk value (SGSO/SMS) was applied to the internationally accepted safety assessment of this airspace.

3.2. Estimating VR parameters – The internationally accepted initial numbers and material for estimating the values of each parameter of the risk value, used for the safety assessment of the RVSM airspace are summarised in the following formula and described in Table 3.

$$VR = (P \times D \times S) + R + W + T,$$

Parameter	Description	Value
<b>VR</b>	Risk value	<b>To be calculated</b>
<b>P</b>	Probability of the position	<b>Varies from 1 to 5</b>
<b>D</b>	Duration of the event	<b>Varies from 1 to 3</b>
<b>S</b>	Severity of the event	<b>Varies from 1 to 5</b>
<b>R</b>	With or without RADAR/ADS	<b>With=5 or without=10</b>
<b>W</b>	Weather conditions	<b>VMC=0 or IMC=5</b>
<b>T</b>	Other traffic (if any)	<b>The range varies from 5 (with radar) to 10 (without radar)</b>
	<b>TOTAL</b>	<b>Maximum: 100</b>

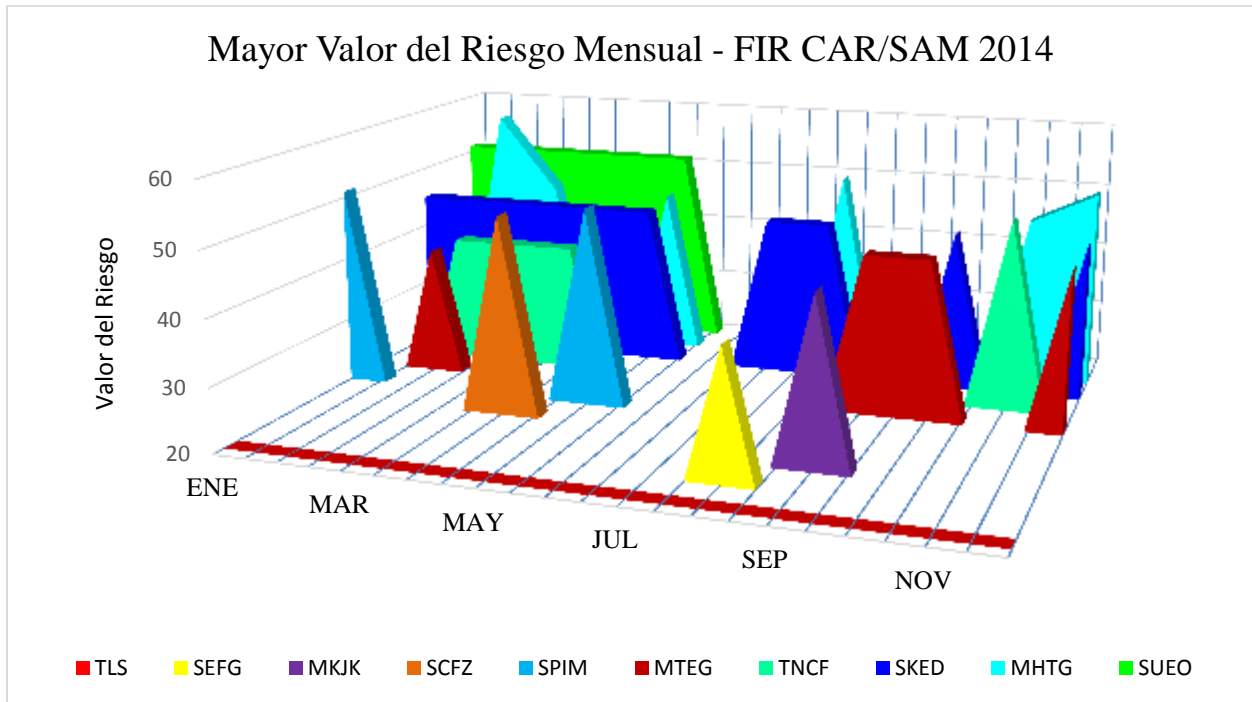
*Table 3. Calculation of risk value parameters*

Safety assessment – The results of the safety assessment of CAR/SAM FIR airspace are detailed in Table 4 and in Graph 5 (FIRs with LHDs of a VR greater than 20).

	TLS	SEFG	MKJK	SCFZ	SPIM	MTEG	TNCF	SKED	MHTG	SUEO
<b>JAN</b>	20				51			45		51
<b>FEB</b>	20					40	40	45	58	51
<b>MAR</b>	20						40	45	46	51
<b>APR</b>	20			51			40	45		51
<b>MAY</b>	20				51			45	46	51
<b>JUN</b>	20									
<b>JUL</b>	20							45		
<b>AUG</b>	20	40						45	51	
<b>SEP</b>	20		46			45				
<b>OCT</b>	20					45		45		
<b>NOV</b>	20						50		46	
<b>DEC</b>	20					45		45	51	

*Table 4. Estimating the highest risk value for the LHD*

3.3. Graph 5 shows the estimation of the risk value of the main LHDs that occurred during all the months, based on LHD reports from 1 January and 31 December 2014.



Graph 5. Higher risk value for CAR/SAM RVSM FIRs. The red line is the VR of the TLS (20).

3.4. The Central America FIR (MHTG) had the highest VR in 2014, with 58 points. In 2014, mainly during the first five months, the Montevideo FIR (SUEO) had an operational risk value above the tolerable level of safety (TLS – red line in Graph 5), *i.e.*, more than 20 points. It should be noted that, in some months, the Bogotá, Port Au Prince and Curazao FIRs had a VR that exceeded the TLS. The TLS limit was created at the Eleventh Meeting of the Scrutiny Working Group (GTE/11-ICAO), held in 2011 in Lima, Peru.

#### 4. Safety analysis (SGSO) of LHDs

4.1. The attached **Annex A** describes in detail the LHDs or operational errors assessed by the GTE, as well as those with the highest risk value (> 20) for 2014. **Table 5** shows the FIRs that were exposed and that generated risks in 2014.

4.2. LHD report #192 that was presented in February 2014 accounted for 2.108% of the risk assessment for that month, with a VR = 58, the highest in the sample.

4.3. The BOGOTA FIR appears 221 times, and the GUAYAQUIL FIR appears 216 times in LHD reports of adjacent FIRs, since they contributed to the generation of risk in their RVSM airspace.

4.4. Likewise, the BOGOTA FIR appeared 209 times in terms of risk generation, while the GUAYAQUIL FIR only generated risk 108 times.

4.5. The PANAMA FIR, despite appearing only 19 times in LHD reports of adjacent FIRs, generated 134 risk occasions in adjacent FIRs, mainly in the BOGOTÁ FIR, with 84 errors/failures.

<b>FIR</b>	<b>Exposed to risk</b>	<b>Generated risk</b>
AMAZONICA	66	57
ANTOFAGASTA	33	7
ASUNCION	9	8
ATLANTICO	84	1
BARRANQUILLA	91	49
BOGOTA	221	209
BRASILIA	7	14
CAYENNE	4	5
CENTRAL AMERICA	90	59
COMODORO RIVADAVIA	19	3
CORDOBA	11	23
CURAZAO	111	37
CURITIBA	20	10
EZEIZA	3	50
GEORGETOWN	3	2
GUAYAQUIL	216	108
HAVANA	26	12
EASTER ISLAND	0	0
KINGSTON	15	27
LA PAZ	36	36
LIMA	57	84
MAIQUETIA	22	51
MENDOZA	9	2
MONTEVIDEO	34	52
PANAMA	16	134
PARAMARIBO	1	11
PIARCO	8	2
PORT AU PRINCE	66	36
PUERTO MONTT	0	0
PUNTA ARENAS	0	0
RECIFE	2	2
RESISTENCIA	22	3
SANTIAGO	1	4
ST. DOMINGO	66	115

*Table 5. FIRs that were exposed to, and that generated risks (LHDs) in 2014*

4.6. Part of the analysis process includes a detailed review of certain operational errors/failures to identify the contributing factors and ensuring that the safety authorities of CAR/SAM FIRs execute procedures and processes to reduce the probability of recurrence.

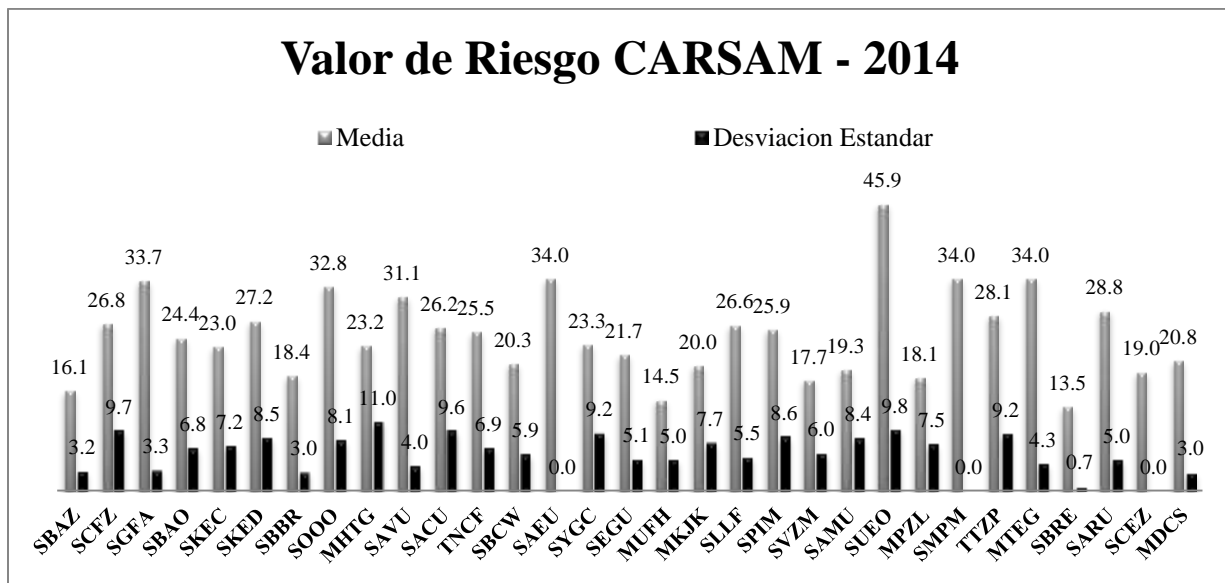
4.7. In the case of RVSM airspace, CARSAMMA assessed the individual operational errors identified in the LHD reports submitted by the 34 FIRs of its geographical coverage area, grouping them by FIR and then by State, using the following statistical tools:

*Risk value means*                       $\Rightarrow$                        $M = \sum VR / n ;$

*Standard deviations*                       $\Rightarrow$                        $\sigma = \sqrt{\frac{1}{N} \sum_{i=1}^N (x - \bar{x})^2} ; y$

Confidence interval for the analysis of 95% (= 1.96)

4.8. **Graph 6** identifies the means and standard deviations in the results of this analysis, with risk value contributions assigned to operational errors of large height deviations by the FIRs involved in the 2014 LHD data analysis.



**Graph 6.** Contribution to means and standard deviations of FIRs involved in the risk

4.9. **Graph 7** below shows the geographical location of risk points (hot points, VR ≥ 40) of LHD reports, with 20 points and 62 reports in the data set for 12 consecutive months in 2014, issued by CAR/SAM FIRs. The image provides a means to identify specific risk points related to RVSM operations.

4.10. The black dot to the left is the LHD with the highest VR=58 (generated by Guayaquil) in the Central American region. The boundaries of the Guayaquil X Bogotá and Guayaquil X Central America FIRs continue to show a high number of LHDs, where most errors are related to the E code (coordination errors). There are several LHDs identified in the current data set, especially in the vicinity of the Montevideo X Ezeiza FIRs.

4.11. It should also be noted that in 2014, there were some reports with high values between Port-Au-Prince X Santo Domingo, Curazao X Santo Domingo, Curazao X Kingston, and an increasing number of reports involving other FIRs that did not appear before, such as Panama, Kingston, Lima, La Paz, Córdoba, and Antofagasta, which generated values of more than 40.

4.12. **Table 6** shows these points and the number of reports and the respective VRs and FIRs involved.



*Graph 7. CAR/SAM FIRs - RVSM large height deviation (LHD) risk points  
January – December 2014*

POINTS	NUMBER OF REPORTS	RISK VALUE (MAX)	FIRs INVOLVED
AMBIN	1 / 4	46	Curazao X Kingston
ARTOM	1 / 4	51	Central America X Guayaquil
BOKAN	1 / 49	45	Bogotá X Guayaquil
BOLDO	1 / 12	51	Bogotá X Central America

POINTS	NUMBER OF REPORTS	RISK VALUE (MAX)	FIRs INVOLVED
DIBOK	1 / 4	46	Curacao X Kingston
DOBN1	1 / 6	51	La Paz X Lima
ENSOL	10 / 42	45	Bogotá X Guayaquil
KONRI	1 / 6	51	Antofagasta X Córdoba
LESIR	1 / 3	46	Central America X Panama
LIXAS	1 / 28	58	Central America X Guayaquil
PIGBI	5 / 35	40 and 45	Port Au Prince X Santo Domingo
RADIM	1 / 1	46	Central America X (Guayaquil)
RAXUN	1 / 4	51	La Paz X Lima
SUEOSAEU3	1 / 1	51	Ezeiza X Montevideo
SUEOSAEU5	4 / 4	51	Ezeiza X Montevideo
SUEOSAEU6	19 / 23	51	Ezeiza X Montevideo
SUEOSAEU8	1 / 2	51	Ezeiza X Montevideo
UGADI	1 / 8	46	Central America X Guayaquil
UGUPI	6 / 68	40 and 45	Bogotá X Guayaquil
VESKA	4 / 31	40 and 50	Curacao X Santo Domingo

*Table 6. CAR/SAM FIRs - RVSM large height deviation (LHD) risk points  
January – December 2014*

5. **Suggested action**

5.1. The Meeting is invited to:

- a) take note of the information contained in this working paper, and the States willing to do so may use this information as a reference to mitigate their LHDs; an
- b) submit that decision to the members of the GTE for their knowledge, approval and delivery to GREPECAS.

-----

LHD Sequence	FIR Suffering Risk	FIR Generating Risk	Date of the Event	GTE Code	Risk Value
1	LIMA	LA PAZ	01/01/14	E2	51
1B	LIMA	PILOTO	01/01/14	B	27
2	AMAZONICA	CURITIBA	01/01/14	E2	17
3	RESISTENCIA	CORDOBA	02/01/14	E2	34
4	RESISTENCIA	CORDOBA	02/01/14	E2	34
5	MONTEVIDEO	EZEIZA	02/01/14	E2	51
6	ATLANTICO	MONTEVIDEO	02/01/14	E2	39
8	CURAZAO	ST. DOMINGO	03/01/14	E1	26
9	BOGOTA	GUAYAQUIL	03/01/14	E1	35
10	BOGOTA	PANAMA	03/01/14	E2	22
11	BOGOTA	PANAMA	03/01/14	E2	22
12	BOGOTA	PANAMA	03/01/14	E2	22
13	AMAZONICA	LA PAZ	03/01/14	E2	17
14	BOGOTA	PANAMA	03/01/14	E2	22
15	LIMA	GUAYAQUIL	04/01/14	E1	18
16	CAYENNE	AMAZONICA	04/01/14	E2	22
17	CURAZAO	MAIQUETIA	04/01/14	E2	17
18	BOGOTA	PANAMA	04/01/14	E2	22
19	BOGOTA	PANAMA	04/01/14	E2	22
20	COMODORO RIVADAVIA	MOUNT PLEASANT	04/01/14	E1	26
21	AMAZONICA	BRASILIA	05/01/14	E2	17
22	AMAZONICA	BRASILIA	05/01/14	E1	13
23	MONTEVIDEO	EZEIZA	05/01/14	E2	51
24	ATLANTICO	MONTEVIDEO	05/01/14	E2	22
25	ST. DOMINGO	SAN JUAN	05/01/14	E1	18
26	PORT AU PRINCE	ST. DOMINGO	05/01/14	E1	31
28	BOGOTA	GUAYAQUIL	06/01/14	E2	45
29	ST. DOMINGO	PORT AU PRINCE	06/01/14	E1	18
30	CURITIBA	MONTEVIDEO	06/01/14	E2	39
31	BOGOTA	PANAMA	06/01/14	E2	22
32	PANAMA	BOGOTA	06/01/14	F	13
33	AMAZONICA	CAYENNE	07/01/14	E2	17
34	MONTEVIDEO	EZEIZA	07/01/14	E2	51
35	ATLANTICO	MONTEVIDEO	07/01/14	E2	22
36	PORT AU PRINCE	MIAMI	08/01/14	E1	31
37	COMODORO RIVADAVIA	EZEIZA	08/01/14	E1	26
39	ATLANTICO	LUANDA	08/01/14	E2	22
40	BOGOTA	PANAMA	08/01/14	E2	39
41	BOGOTA	GUAYAQUIL	08/01/14	E2	45

LHD Sequence	FIR Suffering Risk	FIR Generating Risk	Date of the Event	GTE Code	Risk Value
42	RESISTENCIA	ASUNCION	09/01/14	E1	36
43	AMAZONICA	BRASILIA	09/01/14	E1	13
44	ST. DOMINGO	SAN JUAN	09/01/14	E1	18
45	AMAZONICA	PILOTO	09/01/14	E1	17
46	LIMA	LA PAZ	10/01/14	E1	23
47	COMODORO RIVADAVIA	MOUNT PLEASANT	10/01/14	E1	26
48	BOGOTA	AMAZONICA	10/01/14	E1	18
49	MAIQUETIA	BARRANQUILLA	10/01/14	E2	17
50	BOGOTA	PANAMA	10/01/14	E1	31
51	BOGOTA	PANAMA	10/01/14	E1	31
52	MAIQUETIA	BOGOTA	10/01/14	E1	13
54	CENTRAL AMERICA	HABANA	11/01/14	E1	13
55	DAKAR - (PIARCO)	PIARCO	11/01/14	E1	31
56	MAIQUETIA	BOGOTA	11/01/14	E2	17
57	ST. DOMINGO	CURAZAO	11/01/14	E1	20
58	MAIQUETIA	BARRANQUILLA	11/01/14	E2	17
59	GUAYAQUIL	BOGOTA	11/01/14	E2	30
61	ST. DOMINGO	PORT AU PRINCE	12/01/14	E2	25
62	RESISTENCIA	CORDOBA	12/01/14	E1	26
63	ST. DOMINGO	CURAZAO	12/01/14	E1	18
64	CURAZAO	ST. DOMINGO	12/01/14	E1	30
65	ST. DOMINGO	PORT AU PRINCE	12/01/14	E2	25
66	ST. DOMINGO	PORT AU PRINCE	12/01/14	E2	25
67	ST. DOMINGO	PORT AU PRINCE	12/01/14	E2	25
69	ST. DOMINGO	PORT AU PRINCE	13/01/14	E1	20
70	BRASILIA	BRASILIA	13/01/14	D	19
71	ST. DOMINGO	PORT AU PRINCE	13/01/14	E1	20
72	CURAZAO	BARRANQUILLA	13/01/14	E1	26
73	BOGOTA	MAIQUETIA	14/01/14	E1	18
76	PORT AU PRINCE	ST. DOMINGO	14/01/14	E2	39
78	AMAZONICA	PARAMARIBO	15/01/14	E2	17
81	ST. DOMINGO	CURAZAO	15/01/14	E2	25
82	COMODORO RIVADAVIA	EZEIZA	16/01/14	E1	26
83	RESISTENCIA	EZEIZA	16/01/14	E1	26
84	PORT AU PRINCE	CURAZAO	16/01/14	E1	31
85	AMAZONICA	MAIQUETIA	16/01/14	E1	13
87	GUAYAQUIL	BOGOTA	16/01/14	E2	30
88	GUAYAQUIL	BOGOTA	17/01/14	E1	25

LHD Sequence	FIR Suffering Risk	FIR Generating Risk	Date of the Event	GTE Code	Risk Value
89	BOGOTA	PANAMA	17/01/14	E1	18
90	MONTEVIDEO	EZEIZA	17/01/14	E2	51
91	ATLANTICO	MONTEVIDEO	17/01/14	E2	22
94	HABANA	CENTRAL AMERICA	17/01/14	E1	18
95	CURITIBA	AMAZONICA	17/01/14	E2	22
96	GUAYAQUIL	CENTRAL AMERICA	17/01/14	E1	23
97	AMAZONICA	BRASILIA	17/01/14	E2	17
98	AMAZONICA	BRASILIA	17/01/14	E2	17
100	CENTRAL AMERICA	BOGOTA	18/01/14	E2	34
102	GUAYAQUIL	BOGOTA	19/01/14	E1	25
103	CURAZAO	BARRANQUILLA	19/01/14	E1	26
104	AMAZONICA	BOGOTA	19/01/14	E1	13
105	CURAZAO	ST. DOMINGO	19/01/14	E1	26
106	PORT AU PRINCE	ST. DOMINGO	20/01/14	E1	31
107	ATLANTICO	ABIDJAN	20/01/14	E2	39
109	PORT AU PRINCE	ST. DOMINGO	20/01/14	E1	35
114	LIMA	LA PAZ	21/01/14	E2	39
116	BOGOTA	AMAZONICA	22/01/14	E1	18
117	AMAZONICA	BRASILIA	23/01/14	E2	17
118	LIMA	LA PAZ	23/01/14	E1	31
119	BOGOTA	GUAYAQUIL	23/01/14	E1	35
120	BOGOTA	LIMA	23/01/14	E2	22
123	AMAZONICA	MAIQUETIA	24/01/14	E2	17
124	MONTEVIDEO	EZEIZA	24/01/14	E2	51
125	ATLANTICO	MONTEVIDEO	24/01/14	E2	39
126	GUAYAQUIL	BOGOTA	24/01/14	E2	30
127	BOGOTA	MAIQUETIA	25/01/14	E2	22
128	GUAYAQUIL	BOGOTA	25/01/14	E2	30
129	GUAYAQUIL	BOGOTA	25/01/14	E1	20
130	PIARCO	PARAMARIBO	25/01/14	E1	31
132	MEXICO - (CENTRAL AMERICA)	CENTRAL AMERICA	25/01/14	E1	13
133	AMAZONICA	BOGOTA	26/01/14	E2	17
135	ST. DOMINGO	CURAZAO	26/01/14	E1	20
137	ASUNCION	LA PAZ	26/01/14	E2	34
139	HABANA	CENTRAL AMERICA	26/01/14	E1	18
141	SAN JUAN - (CURAZAO)	CURAZAO	26/01/14	E2	34
142	BOGOTA	PANAMA	27/01/14	E2	39
143	SAN JUAN - (ST. DOMINGO)	ST. DOMINGO	27/01/14	E2	22
144	BOGOTA	GUAYAQUIL	27/01/14	E1	31

LHD Sequence	FIR Suffering Risk	FIR Generating Risk	Date of the Event	GTE Code	Risk Value
145	AMAZONICA	CAYENNE	27/01/14	E2	17
146	COMODORO RIVADAVIA	EZEIZA	27/01/14	E1	26
147	GUAYAQUIL	BOGOTA	28/01/14	E1	20
148	AMAZONICA	BOGOTA	28/01/14	E1	13
149	MONTEVIDEO	EZEIZA	28/01/14	E2	51
150	ATLANTICO	MONTEVIDEO	28/01/14	E2	39
151	MONTEVIDEO	EZEIZA	28/01/14	E2	51
152	ATLANTICO	MONTEVIDEO	28/01/14	E2	39
153	BOGOTA	AMAZONICA	28/01/14	E1	18
154	LIMA	AMAZONICA	28/01/14	E2	27
155	CENTRAL AMERICA	PANAMA	28/01/14	E2	17
156	PANAMA	BOGOTA	28/01/14	E2	22
157	BOGOTA	GUAYAQUIL	29/01/14	E1	35
158	CENTRAL AMERICA	BOGOTA	29/01/14	E2	34
159	ASUNCION	LA PAZ	30/01/14	E2	34
160	CENTRAL AMERICA	PANAMA	30/01/14	E1	26
161	HABANA	HABANA	30/01/14	D	19
162	ST. DOMINGO	CURAZAO	31/01/14	E2	25
163	ST. DOMINGO	PORT AU PRINCE	31/01/14	E2	22
164	MAIQUETIA	GEORGETOWN	31/01/14	E1	13
165	MAIQUETIA	BARRANQUILLA	01/02/14	E2	17
166	GUAYAQUIL	BOGOTA	01/02/14	E1	20
167	GUAYAQUIL	BOGOTA	02/02/14	E2	27
168	GUAYAQUIL	BOGOTA	02/02/14	E2	27
169	RESISTENCIA	CORDOBA	02/02/14	E1	26
170	ST. DOMINGO	CURAZAO	02/02/14	E1	18
171	RESISTENCIA	CORDOBA	03/02/14	E1	26
172	BOGOTA	PANAMA	03/02/14	E1	31
173	CURAZAO	ST. DOMINGO	03/02/14	E1	30
174	ST. DOMINGO	PORT AU PRINCE	03/02/14	E1	18
175	CURAZAO	BARRANQUILLA	03/02/14	E1	26
176	BOGOTA	GUAYAQUIL	03/02/14	E1	35
177	CENTRAL AMERICA	BOGOTA	04/02/14	E1	36
178	MONTEVIDEO	EZEIZA	04/02/14	E2	51
179	ATLANTICO	MONTEVIDEO	04/02/14	E2	22
180	CURAZAO	ST. DOMINGO	04/02/14	E2	40
181	CURAZAO	KINGSTON	05/02/14	E1	36
182	CENTRAL AMERICA	PILOTO	05/02/14	B	9

LHD Sequence	FIR Suffering Risk	FIR Generating Risk	Date of the Event	GTE Code	Risk Value
184	BOGOTA	GUAYAQUIL	07/02/14	E2	45
185	ATLANTICO	LUANDA	07/02/14	E2	22
186	MONTEVIDEO	EZEIZA	07/02/14	E2	51
187	ATLANTICO	MONTEVIDEO	07/02/14	E2	22
188	CURAZAO	ST. DOMINGO	07/02/14	E1	26
189	BOGOTA	GUAYAQUIL	08/02/14	E1	35
190	PORT AU PRINCE	ST. DOMINGO	08/02/14	E1	31
192	CENTRAL AMERICA	GUAYAQUIL	09/02/14	B	58
193	MEXICO	CENTRAL AMERICA	09/02/14	E2	22
194	RESISTENCIA	EZEIZA	09/02/14	E1	26
195	MIAMI - (ST. DOMINGO)	ST. DOMINGO	09/02/14	E2	17
196	BOGOTA	GUAYAQUIL	09/02/14	E1	18
197	BOGOTA	GUAYAQUIL	09/02/14	E2	45
198	CENTRAL AMERICA	BOGOTA	10/02/14	E2	34
200	PORT AU PRINCE	ST. DOMINGO	10/02/14	E1	31
204	GUAYAQUIL	BOGOTA	11/02/14	E1	20
205	BOGOTA	PANAMA	11/02/14	E1	18
206	BOGOTA	PANAMA	11/02/14	E1	18
207	BOGOTA	GUAYAQUIL	11/02/14	E1	35
208	MONTEVIDEO	EZEIZA	11/02/14	E2	51
209	ATLANTICO	MONTEVIDEO	11/02/14	E2	22
210	PORT AU PRINCE - (ST. DOMINGO)	ST. DOMINGO	11/02/14	E2	40
211	MAIQUETIA	SAN JUAN	11/02/14	E2	34
212	PORT AU PRINCE	KINGSTON	12/02/14	E2	39
213	MEXICO - (CENTRAL AMERICA)	CENTRAL AMERICA	12/02/14	E1	13
214	BOGOTA	GUAYAQUIL	12/02/14	E2	45
215	PANAMA	BOGOTA	12/02/14	E1	13
216	CURAZAO	BARRANQUILLA	12/02/14	E1	26
219	MONTEVIDEO	EZEIZA	13/02/14	E2	51
220	ATLANTICO	MONTEVIDEO	13/02/14	E2	39
221	BOGOTA	GUAYAQUIL	13/02/14	E1	31
222	MEXICO	CENTRAL AMERICA	13/02/14	E1	18
223	MEXICO	CENTRAL AMERICA	13/02/14	E1	18
226	GUAYAQUIL	BOGOTA	13/02/14	E2	27
227	HABANA	CENTRAL AMERICA	13/02/14	E1	13
230	ATLANTICO	MONTEVIDEO	13/02/14	M	14
231	CURAZAO	PORT AU PRINCE	13/02/14	E1	26
232	BOGOTA	GUAYAQUIL	14/02/14	E2	39

LHD Sequence	FIR Suffering Risk	FIR Generating Risk	Date of the Event	GTE Code	Risk Value
233	MONTEVIDEO	EZEIZA	14/02/14	E2	51
234	ATLANTICO	MONTEVIDEO	14/02/14	E2	22
235	ANTOFAGASTA	LIMA	15/02/14	E1	34
238	BOGOTA	PANAMA	15/02/14	E1	31
240	GUAYAQUIL	BOGOTA	16/02/14	E1	20
243	GUAYAQUIL	LIMA	16/02/14	E1	23
244	PORT AU PRINCE - (ST. DOMINGO)	ST. DOMINGO	16/02/14	E1	26
245	PIARCO	SAL	16/02/14	E2	39
246	MIAMI - (ST. DOMINGO)	ST. DOMINGO	16/02/14	E2	22
247	LIMA	BOGOTA	16/02/14	E1	31
248	CENTRAL AMERICA	MEXICO	16/02/14	E1	13
252	LIMA	LA PAZ	17/02/14	E1	31
253	CURAZAO	ST. DOMINGO	18/02/14	E1	26
254	BOGOTA	GUAYAQUIL	18/02/14	E1	35
257	ATLANTICO	MONTEVIDEO	18/02/14	M	14
258	RECIFE	AERONAVE	19/02/14	H	14
259	GUAYAQUIL	BOGOTA	19/02/14	E1	20
260	BOGOTA	GUAYAQUIL	19/02/14	E1	31
261	CENTRAL AMERICA	MEXICO	19/02/14	E1	13
262	PANAMA	BOGOTA	20/02/14	E1	18
264	LIMA	GUAYAQUIL	20/02/14	E1	20
266	ST. DOMINGO	SAN JUAN	20/02/14	E2	22
267	PANAMA	BOGOTA	20/02/14	E1	13
269	MAIQUETIA	BOGOTA	21/02/14	E1	13
270	ANTOFAGASTA - (LIMA)	LIMA	22/02/14	E1	31
272	ATLANTICO	MONTEVIDEO	22/02/14	M	14
273	PANAMA	BOGOTA	22/02/14	E1	13
274	ATLANTICO	LUANDA	22/02/14	E2	22
275	GUAYAQUIL	BOGOTA	23/02/14	E1	20
277	HABANA - (CENTRAL AMERICA)	CENTRAL AMERICA	23/02/14	E1	13
278	CURAZAO	MAIQUETIA	23/02/14	E1	13
279	CAYENNE	AMAZONICA	23/02/14	E2	39
280	CURAZAO	ST. DOMINGO	23/02/14	E1	26
281	CENTRAL AMERICA	MEXICO	24/02/14	E1	26
282	CURAZAO - (ST. DOMINGO)	ST. DOMINGO	24/02/14	E2	39
285	GUAYAQUIL	LIMA	24/02/14	E1	18
286	GUAYAQUIL	BOGOTA	24/02/14	E1	25
288	LIMA	GUAYAQUIL	25/02/14	E1	31

LHD Sequence	FIR Suffering Risk	FIR Generating Risk	Date of the Event	GTE Code	Risk Value
289	MONTEVIDEO	EZEIZA	25/02/14	E2	51
290	ATLANTICO	MONTEVIDEO	25/02/14	M	14
294	BRASILIA	AERONAVE	26/02/14	L	13
295	ANTOFAGASTA - (LIMA)	LIMA	26/02/14	E1	31
296	CURAZAO	BARRANQUILLA	27/02/14	E1	26
297	CURAZAO	BARRANQUILLA	27/02/14	E1	26
298	ATLANTICO	LUANDA	27/02/14	E2	22
299	BOGOTA - (GUAYAQUIL)	GUAYAQUIL	27/02/14	E1	18
300	GEORGETOWN - (PIARCO)	PIARCO	28/02/14	E1	18
301	ATLANTICO	LUANDA	28/02/14	E2	22
302	PORT AU PRINCE	ST. DOMINGO	28/02/14	E2	39
303	GUAYAQUIL	BOGOTA	28/02/14	E1	23
304	CURITIBA	BRASILIA	28/02/14	E1	18
306	CENTRAL AMERICA	GUAYAQUIL	01/03/14	E2	46
308	CURAZAO	ST. DOMINGO	01/03/14	E1	26
309	KINGSTON	BARRANQUILLA	01/03/14	E2	22
310	CURAZAO	ST. DOMINGO	01/03/14	E2	34
311	BOGOTA	GUAYAQUIL	02/03/14	E1	35
312	BOGOTA	GUAYAQUIL	02/03/14	E1	31
313	KINGSTON	BARRANQUILLA	02/03/14	E1	18
314	CURAZAO - (ST. DOMINGO)	ST. DOMINGO	02/03/14	E2	22
315	BOGOTA	PANAMA	02/03/14	E1	31
316	CURAZAO	ST. DOMINGO	02/03/14	E1	26
317	PORT AU PRINCE - (MIAMI)	MIAMI	03/03/14	E1	26
322	GUAYAQUIL	CENTRAL AMERICA	03/03/14	E1	23
323	CURITIBA	PILOTO	03/03/14	A	13
324	MONTEVIDEO	EZEIZA	04/03/14	E2	51
325	ATLANTICO	MONTEVIDEO	04/03/14	E2	22
326	LIMA	AMAZONICA	04/03/14	E2	39
327	PANAMA	KINGSTON	04/03/14	E1	13
328	MONTEVIDEO	EZEIZA	04/03/14	E2	51
329	ATLANTICO	MONTEVIDEO	04/03/14	E2	39
331	LIMA	AMAZONICA	04/03/14	E2	39
332	ST. DOMINGO	CURAZAO	04/03/14	E1	20
334	CURAZAO	ST. DOMINGO	05/03/14	E1	30
335	RESISTENCIA	CORDOBA	06/03/14	E1	26
338	PORT AU PRINCE	ST. DOMINGO	06/03/14	E2	39
339	ANTOFAGASTA	LIMA	07/03/14	E1	18
341	CURAZAO	MAIQUETIA	07/03/14	E1	13

LHD Sequence	FIR Suffering Risk	FIR Generating Risk	Date of the Event	GTE Code	Risk Value
342	PORT AU PRINCE	ST. DOMINGO	07/03/14	E1	31
343	BOGOTA	MAIQUETIA	07/03/14	E2	22
344	BOGOTA	AMAZONICA	07/03/14	E1	18
345	GUAYAQUIL - (LIMA)	LIMA	07/03/14	E1	35
346	ATLANTICO	LUANDA	07/03/14	E2	22
347	MONTEVIDEO	EZEIZA	07/03/14	E2	51
348	ATLANTICO	MONTEVIDEO	07/03/14	E2	22
351	MONTEVIDEO	EZEIZA	07/03/14	E2	51
352	ATLANTICO	MONTEVIDEO	07/03/14	E2	39
353	CURAZAO	ST. DOMINGO	07/03/14	E1	30
354	LIMA	LA PAZ	07/03/14	E1	18
354B	LIMA	PILOTO	07/03/14	I	19
355	CURAZAO	BARRANQUILLA	08/03/14	E1	26
356	GUAYAQUIL	BOGOTA	08/03/14	E1	25
357	LIMA	LA PAZ	08/03/14	E1	31
359	ANTOFAGASTA	LIMA	08/03/14	E1	18
360	MEXICO	CENTRAL AMERICA	08/03/14	E1	18
361	PORT AU PRINCE	ST. DOMINGO	08/03/14	E1	35
362	CENTRAL AMERICA - (MEXICO)	MEXICO	08/03/14	E2	22
363	LIMA	GUAYAQUIL	08/03/14	E1	20
364	BOGOTA	GUAYAQUIL	09/03/14	E1	18
365	BOGOTA	PANAMA	09/03/14	E2	22
366	GUAYAQUIL	LIMA	09/03/14	E1	25
367	BOGOTA	PANAMA	09/03/14	E1	18
368	GUAYAQUIL - (LIMA)	LIMA	09/03/14	E2	39
369	BOGOTA	CENTRAL AMERICA	09/03/14	E1	31
370	ST. DOMINGO	PORT AU PRINCE	10/03/14	E1	20
371	ST. DOMINGO	PORT AU PRINCE	11/03/14	E2	22
373	GUAYAQUIL	CENTRAL AMERICA	12/03/14	E2	27
374	BOGOTA	GUAYAQUIL	12/03/14	E1	31
375	MEXICO	CENTRAL AMERICA	12/03/14	E1	18
376	PORT AU PRINCE	ST. DOMINGO	12/03/14	E1	31
377	MAIQUETIA	BOGOTA	12/03/14	E2	17
378	MAIQUETIA	AMAZONICA	13/03/14	E2	17
379	GUAYAQUIL	BOGOTA	13/03/14	E2	30
380	MEXICO	CENTRAL AMERICA	13/03/14	E1	18
381	HABANA	CENTRAL AMERICA	13/03/14	E1	13
383	ANTOFAGASTA	LIMA	14/03/14	E1	34

LHD Sequence	FIR Suffering Risk	FIR Generating Risk	Date of the Event	GTE Code	Risk Value
384	ATLANTICO	LUANDA	14/03/14	E2	22
386	BOGOTA	GUAYAQUIL	14/03/14	E2	45
387	NEW YORK - (PIARCO)	PIARCO	14/03/14	E2	39
389	BOGOTA	AMAZONICA	15/03/14	E1	18
390	MONTEVIDEO	EZEIZA	15/03/14	E2	51
391	ATLANTICO	MONTEVIDEO	15/03/14	E2	39
392	CURITIBA	PILOTO	15/03/14	A	16
393	CURAZAO	ST. DOMINGO	15/03/14	E2	40
394	BOGOTA	AMAZONICA	15/03/14	E1	18
395	BOGOTA	AMAZONICA	15/03/14	E1	18
396	PORT AU PRINCE	ST. DOMINGO	16/03/14	E1	31
398	CURAZAO	ST. DOMINGO	16/03/14	E1	26
399	PORT AU PRINCE	ST. DOMINGO	16/03/14	E1	35
400	CURAZAO	MAIQUETIA	17/03/14	E2	17
401	BOGOTA	PANAMA	17/03/14	E1	18
403	GUAYAQUIL	BOGOTA	18/03/14	E1	25
404	GUAYAQUIL	BOGOTA	18/03/14	E2	25
405	ATLANTICO	LUANDA	19/03/14	E2	22
407	GUAYAQUIL	BOGOTA	19/03/14	E1	25
408	BOGOTA	GUAYAQUIL	20/03/14	E1	31
409	RESISTENCIA	EZEIZA	20/03/14	E1	26
410	GUAYAQUIL	BOGOTA	20/03/14	E1	23
411	ATLANTICO	JOHANNESBURG	20/03/14	E2	22
414	GUAYAQUIL	LIMA	21/03/14	E1	23
415	ST. DOMINGO	PORT AU PRINCE	21/03/14	E1	20
416	BOGOTA	GUAYAQUIL	21/03/14	E1	31
417	PORT AU PRINCE	ST. DOMINGO	21/03/14	E1	31
418	PORT AU PRINCE	MIAMI	21/03/14	E1	31
419	BOGOTA	GUAYAQUIL	21/03/14	E1	31
420	GUAYAQUIL	BOGOTA	22/03/14	E1	25
421	BOGOTA	AMAZONICA	22/03/14	E1	18
422	GUAYAQUIL	LIMA	22/03/14	E1	23
423	PORT AU PRINCE	MIAMI	22/03/14	E2	39
424	ANTOFAGASTA	LIMA	22/03/14	E1	18
426	CENTRAL AMERICA - (MEXICO)	MEXICO	22/03/14	E1	18
427	CURAZAO	BARRANQUILLA	23/03/14	E2	34
428	MEXICO	CENTRAL AMERICA	23/03/14	E1	18
430	MIAMI - (ST. DOMINGO)	ST. DOMINGO	23/03/14	E2	22
431	ST. DOMINGO	SAN JUAN	23/03/14	E1	18

LHD Sequence	FIR Suffering Risk	FIR Generating Risk	Date of the Event	GTE Code	Risk Value
432	CURAZAO	ST. DOMINGO	23/03/14	E1	30
433	CURAZAO	BARRANQUILLA	24/03/14	E1	26
434	BOGOTA	AMAZONICA	24/03/14	E2	22
435	RESISTENCIA	EZEIZA	24/03/14	E1	26
436	PORT AU PRINCE	ST. DOMINGO	24/03/14	E1	31
437	GUAYAQUIL	BOGOTA	25/03/14	E1	25
438	ST. DOMINGO	CURAZAO	25/03/14	E1	18
439	MEXICO	CENTRAL AMERICA	25/03/14	E2	22
440	GUAYAQUIL	BOGOTA	26/03/14	E1	23
441	GUAYAQUIL	BOGOTA	26/03/14	E1	23
442	GUAYAQUIL	BOGOTA	26/03/14	E1	25
443	ANTOFAGASTA	CORDOBA	26/03/14	E1	13
444	ST. DOMINGO	PORT AU PRINCE	27/03/14	E1	20
445	BOGOTA	PANAMA	28/03/14	E2	22
446	ST. DOMINGO	PORT AU PRINCE	28/03/14	E2	22
447	LIMA	BOGOTA	29/03/14	E1	18
448	ANTOFAGASTA	CORDOBA	29/03/14	E1	29
449	MONTEVIDEO	EZEIZA	29/03/14	E2	51
450	DAKAR - (CAYENNE)	CAYENNE	30/03/14	E1	31
451	AMAZONICA	BOGOTA	30/03/14	E1	13
453	MIAMI - (ST. DOMINGO)	ST. DOMINGO	31/03/14	E2	22
454	ST. DOMINGO	MIAMI	31/03/14	E2	22
455	ANTOFAGASTA	LIMA	31/03/14	E1	18
457	ST. DOMINGO	SAN JUAN	01/04/14	E1	18
458	GUAYAQUIL	BOGOTA	01/04/14	E2	30
459	MONTEVIDEO	EZEIZA	01/04/14	E2	39
460	ATLANTICO	MONTEVIDEO	01/04/14	E2	22
461	BOGOTA	GUAYAQUIL	02/04/14	E1	20
462	ATLANTICO	LUANDA	02/04/14	E2	22
463	AMAZONICA	PARAMARIBO	02/04/14	E1	13
464	CURAZAO	BARRANQUILLA	02/04/14	E1	26
465	CURAZAO	KINGSTON	02/04/14	E1	26
466	CURAZAO	ST. DOMINGO	03/04/14	E1	30
467	AMAZONICA	MAIQUETIA	03/04/14	E1	13
468	ATLANTICO	ABIDJAN	03/04/14	E2	22
469	MONTEVIDEO	EZEIZA	03/04/14	E2	39
470	ATLANTICO	MONTEVIDEO	03/04/14	E2	22
471B	LA PAZ	LIMA	03/04/14	E2	27

LHD Sequence	FIR Suffering Risk	FIR Generating Risk	Date of the Event	GTE Code	Risk Value
471	CORDOBA	LA PAZ	03/04/14	E1	13
472	GUAYAQUIL	CENTRAL AMERICA	04/04/14	E1	23
473	BOGOTA	GUAYAQUIL	04/04/14	E1	31
475	GUAYAQUIL	LIMA	04/04/14	E1	20
480	MEXICO	CENTRAL AMERICA	05/04/14	E1	18
481	ST. DOMINGO	PORT AU PRINCE	06/04/14	E1	20
482	MEXICO	CENTRAL AMERICA	07/04/14	E1	18
484	PORT AU PRINCE	MIAMI	07/04/14	E1	31
485	CENTRAL AMERICA	BOGOTA	07/04/14	E2	34
486	BOGOTA	PANAMA	07/04/14	E1	18
487	CENTRAL AMERICA - (MEXICO)	MEXICO	08/04/14	E1	18
488	MONTEVIDEO	EZEIZA	08/04/14	E2	39
489	ATLANTICO	MONTEVIDEO	08/04/14	E2	22
490	KINGSTON	BARRANQUILLA	08/04/14	E1	18
491	CURAZAO	ST. DOMINGO	08/04/14	E1	26
493	PORT AU PRINCE	ST. DOMINGO	09/04/14	E1	35
494	AMAZONICA	LA PAZ	09/04/14	E2	17
495	CURAZAO	ST. DOMINGO	09/04/14	E1	30
496	CURAZAO - (ST. DOMINGO)	ST. DOMINGO	10/04/14	E1	18
497	AMAZONICA	AERONAVE	10/04/14	L	8
498	CURAZAO	ST. DOMINGO	10/04/14	E1	26
499	CENTRAL AMERICA - (MEXICO)	MEXICO	10/04/14	E2	22
500	MEXICO	CENTRAL AMERICA	10/04/14	E1	23
501	CURAZAO	ST. DOMINGO	10/04/14	E1	30
503	PORT AU PRINCE	ST. DOMINGO	10/04/14	E1	35
505	CURAZAO	ST. DOMINGO	10/04/14	E2	40
506	CURAZAO	ST. DOMINGO	11/04/14	E1	26
507	AMAZONICA	LA PAZ	11/04/14	E1	13
508	KINGSTON - (HABANA)	HABANA	11/04/14	E1	13
509	MEXICO	CENTRAL AMERICA	11/04/14	E2	22
510	MEXICO	CENTRAL AMERICA	11/04/14	E2	22
511	MEXICO	CENTRAL AMERICA	12/04/14	E1	18
513	BOGOTA	GUAYAQUIL	12/04/14	E1	20
514	ATLANTICO	LUANDA	12/04/14	E2	22
516	LIMA	GUAYAQUIL	12/04/14	E2	22
517	BOGOTA	GUAYAQUIL	12/04/14	E1	35
519	ST. DOMINGO	SAN JUAN	12/04/14	E2	22
520	LIMA	AMAZONICA	12/04/14	E2	22

LHD Sequence	FIR Suffering Risk	FIR Generating Risk	Date of the Event	GTE Code	Risk Value
521	GUAYAQUIL - (LIMA)	LIMA	13/04/14	E2	39
522	AMAZONICA	LA PAZ	13/04/14	E2	17
523	BOGOTA	GUAYAQUIL	13/04/14	E1	35
524	LIMA	AMAZONICA	13/04/14	E2	22
525	CORDOBA	LA PAZ	13/04/14	E2	34
526	BOGOTA - (GUAYAQUIL)	GUAYAQUIL	14/04/14	F	18
527	BOGOTA	PANAMA	14/04/14	E1	31
529	LIMA	GUAYAQUIL	14/04/14	E1	20
530	GUAYAQUIL	CENTRAL AMERICA	14/04/14	E2	27
531	BOGOTA	GUAYAQUIL	14/04/14	E2	45
532	AMAZONICA	MAIQUETIA	14/04/14	E2	17
533	GUAYAQUIL	CENTRAL AMERICA	14/04/14	E1	23
536	AMAZONICA	MAIQUETIA	14/04/14	E2	17
537	MEXICO	CENTRAL AMERICA	14/04/14	E2	27
539	MEXICO	CENTRAL AMERICA	14/04/14	E2	22
540	MIAMI	PORT AU PRINCE	14/04/14	E1	13
541	GUAYAQUIL	BOGOTA	15/04/14	E1	25
542	GUAYAQUIL	BOGOTA	15/04/14	E2	30
543	MONTEVIDEO	EZEIZA	15/04/14	E2	51
544	ATLANTICO	MONTEVIDEO	15/04/14	E2	22
545	ATLANTICO	LUANDA	15/04/14	E2	22
546	BARRANQUILLA - (CURAZAO)	CURAZAO	15/04/14	E2	34
547	BOGOTA	GUAYAQUIL	15/04/14	E1	35
548	ATLANTICO	LUANDA	16/04/14	E2	39
549	BOGOTA	GUAYAQUIL	17/04/14	E1	18
550	GUAYAQUIL	BOGOTA	17/04/14	E1	23
551	MONTEVIDEO	EZEIZA	18/04/14	E2	51
552	ATLANTICO	MONTEVIDEO	18/04/14	E2	22
553	GUAYAQUIL	LIMA	19/04/14	E1	23
554	PIARCO - (MAIQUETIA)	MAIQUETIA	19/04/14	E1	13
555	ATLANTICO	LUANDA	19/04/14	E2	22
556	MAIQUETIA	AMAZONICA	19/04/14	E1	13
557	LIMA	AMAZONICA	19/04/14	E2	22
558	MEXICO	CENTRAL AMERICA	19/04/14	E1	18
560	CURAZAO	ST. DOMINGO	20/04/14	E1	30
561	ST. DOMINGO	PORT AU PRINCE	20/04/14	E2	22
562	ST. DOMINGO	PORT AU PRINCE	20/04/14	E2	22
563	GEORGETOWN	PARAMARIBO	21/04/14	E1	34

LHD Sequence	FIR Suffering Risk	FIR Generating Risk	Date of the Event	GTE Code	Risk Value
564	GEORGETOWN	PARAMARIBO	21/04/14	E1	18
565	MEXICO	CENTRAL AMERICA	21/04/14	E1	18
566	MEXICO	CENTRAL AMERICA	21/04/14	E1	18
567	GUAYAQUIL	LIMA	21/04/14	E2	27
568	GUAYAQUIL	BOGOTA	21/04/14	E2	30
569	GUAYAQUIL	BOGOTA	21/04/14	E2	30
570	MEXICO	CENTRAL AMERICA	22/04/14	E1	23
571	AMAZONICA	MAIQUETIA	22/04/14	E1	13
572	GUAYAQUIL	CENTRAL AMERICA	22/04/14	E1	23
574	MONTEVIDEO	EZEIZA	22/04/14	E2	51
575	ATLANTICO	MONTEVIDEO	22/04/14	E2	22
576	MONTEVIDEO	EZEIZA	22/04/14	E2	51
577	ATLANTICO	MONTEVIDEO	22/04/14	E2	22
578	MONTEVIDEO	EZEIZA	22/04/14	E2	51
579	ATLANTICO	MONTEVIDEO	22/04/14	E2	22
580	ST. DOMINGO	CURAZAO	23/04/14	E1	18
581	CENTRAL AMERICA	PANAMA	23/04/14	E1	13
582	GUAYAQUIL	LIMA	23/04/14	E2	22
583	BOGOTA	AMAZONICA	23/04/14	E1	18
584	GUAYAQUIL	BOGOTA	23/04/14	E2	25
585	LIMA - (GUAYAQUIL)	GUAYAQUIL	23/04/14	E2	25
586	GUAYAQUIL	CENTRAL AMERICA	24/04/14	E1	23
587	ST. DOMINGO	CURAZAO	25/04/14	E2	22
588	ANTOFAGASTA	CORDOBA	25/04/14	E2	51
589	CURAZAO	ST. DOMINGO	25/04/14	E1	26
591	GUAYAQUIL	BOGOTA	26/04/14	E1	20
592	BOGOTA	PANAMA	26/04/14	E2	22
593	HABANA	CENTRAL AMERICA	26/04/14	E1	13
594	MIAMI - (ST. DOMINGO)	ST. DOMINGO	26/04/14	E2	22
595	HABANA	CENTRAL AMERICA	27/04/14	E1	13
596	ANTOFAGASTA	LIMA	27/04/14	E1	39
599	ANTOFAGASTA	LIMA	27/04/14	E2	27
600	ST. DOMINGO	PORT AU PRINCE	28/04/14	E2	22
601	ST. DOMINGO	PORT AU PRINCE	28/04/14	E2	22
602	ST. DOMINGO	PORT AU PRINCE	28/04/14	E2	22
603	ASUNCION	LA PAZ	28/04/14	E2	34
605	GUAYAQUIL	LIMA	28/04/14	E2	27
606	LIMA	BOGOTA	28/04/14	E2	22

LHD Sequence	FIR Suffering Risk	FIR Generating Risk	Date of the Event	GTE Code	Risk Value
607	GUAYAQUIL	LIMA	28/04/14	E1	25
608	ATLANTICO	LUANDA	29/04/14	E2	22
609	ATLANTICO	LUANDA	29/04/14	E2	22
610	ST. DOMINGO	PORT AU PRINCE	30/04/14	E2	22
611	GUAYAQUIL - (LIMA)	LIMA	30/04/14	E1	31
612	MAIQUETIA	BARRANQUILLA	30/04/14	E2	17
613	LIMA	BOGOTA	30/04/14	E2	22
614	PANAMA - (KINGSTON)	KINGSTON	01/05/14	E1	18
615	CURAZAO	KINGSTON	01/05/14	E1	26
616	ST. DOMINGO	PORT AU PRINCE	01/05/14	E1	18
617	MEXICO	CENTRAL AMERICA	01/05/14	E1	18
619	CENTRAL AMERICA	HABANA	01/05/14	E1	13
624	BOGOTA	MAIQUETIA	03/05/14	E1	18
625	ATLANTICO	ABIDJAN	03/05/14	E2	22
626	PANAMA	CENTRAL AMERICA	03/05/14	E1	13
627	ST. DOMINGO - (CURAZAO)	CURAZAO	03/05/14	E2	34
628	LIMA	LA PAZ	04/05/14	E2	51
629	CENTRAL AMERICA	GUAYAQUIL	04/05/14	E1	26
630	CENTRAL AMERICA	MEXICO	04/05/14	E1	13
632	COMODORO RIVADAVIA	MOUNT PLEASANT	04/05/14	E2	34
633	BOGOTA	PANAMA	05/05/14	E1	18
634	CENTRAL AMERICA	MEXICO	05/05/14	E1	13
635	MAIQUETIA	BARRANQUILLA	05/05/14	E2	17
636	KINGSTON	PANAMA	05/05/14	E1	18
637	BOGOTA	GUAYAQUIL	06/05/14	E1	35
638	CENTRAL AMERICA	GUAYAQUIL	06/05/14	F	34
639	LIMA	GUAYAQUIL	06/05/14	E2	25
640	CENTRAL AMERICA	GUAYAQUIL	06/05/14	E2	46
641	BOGOTA	GUAYAQUIL	06/05/14	E2	45
642	LIMA	GUAYAQUIL	06/05/14	E1	20
644	ANTOFAGASTA	LIMA	07/05/14	E1	34
645	ST. DOMINGO	MIAMI	07/05/14	E2	22
646	LA PAZ - (LIMA)	LIMA	07/05/14	E1	31
647	CENTRAL AMERICA - (MEXICO)	MEXICO	07/05/14	E1	18
648	GUAYAQUIL	BOGOTA	08/05/14	E1	23
649	GUAYAQUIL	BOGOTA	08/05/14	E1	23
650	GUAYAQUIL	LIMA	08/05/14	E1	23
651	ATLANTICO	ABIDJAN	08/05/14	E2	22

LHD Sequence	FIR Suffering Risk	FIR Generating Risk	Date of the Event	GTE Code	Risk Value
652	ST. DOMINGO	PORT AU PRINCE	09/05/14	E2	22
653	CURAZAO	ST. DOMINGO	09/05/14	E1	26
655	CURAZAO	ST. DOMINGO	09/05/14	E2	34
656	ATLANTICO	LUANDA	10/05/14	E2	22
657	PORT AU PRINCE	ST. DOMINGO	10/05/14	E1	31
659	AMAZONICA	MAIQUETIA	11/05/14	E2	17
662	MEXICO	CENTRAL AMERICA	12/05/14	E1	18
663	LIMA	LA PAZ	12/05/14	E2	39
665	MONTEVIDEO	EZEIZA	13/05/14	E2	51
666	ATLANTICO	MONTEVIDEO	13/05/14	E2	22
667	MIAMI	HABANA	13/05/14	E1	13
668	BOGOTA	PANAMA	14/05/14	E1	18
669	BOGOTA	PANAMA	14/05/14	E2	39
670	CENTRAL AMERICA	PILOTO	14/05/14	M	6
671	GUAYAQUIL	BOGOTA	14/05/14	E2	30
672	GUAYAQUIL	BOGOTA	14/05/14	E1	23
673	PORT AU PRINCE - (ST. DOMINGO)	ST. DOMINGO	15/05/14	E1	31
674	ST. DOMINGO	PORT AU PRINCE	15/05/14	E2	22
675	CENTRAL AMERICA	PANAMA	15/05/14	E1	13
676	BOGOTA	PANAMA	16/05/14	E1	31
677	BOGOTA	PANAMA	16/05/14	E1	31
678	MAIQUETIA	BARRANQUILLA	16/05/14	E2	17
680	CENTRAL AMERICA	MEXICO	16/05/14	E2	17
681	CENTRAL AMERICA	PANAMA	16/05/14	E2	17
682	MONTEVIDEO	EZEIZA	16/05/14	E2	39
683	ATLANTICO	MONTEVIDEO	16/05/14	E2	22
684	BOGOTA	PANAMA	16/05/14	E1	18
685	BOGOTA	GUAYAQUIL	17/05/14	E2	45
686	BOGOTA	CENTRAL AMERICA	17/05/14	E1	31
687	BOGOTA	GUAYAQUIL	17/05/14	E1	31
688	CURAZAO	ST. DOMINGO	17/05/14	E1	26
690	LIMA - (ANTOFAGASTA)	ANTOFAGASTA	18/05/14	E1	13
691	BOGOTA	PANAMA	18/05/14	E2	39
692	CURAZAO	ST. DOMINGO	18/05/14	E1	26
693	ASUNCION	LA PAZ	18/05/14	E2	34
694	ASUNCION	LA PAZ	18/05/14	E2	34
695	LIMA	LA PAZ	19/05/14	E1	39
696	MIAMI	ST. DOMINGO	19/05/14	E1	13
697	BOGOTA	PANAMA	20/05/14	E1	31

LHD Sequence	FIR Suffering Risk	FIR Generating Risk	Date of the Event	GTE Code	Risk Value
698	BOGOTA	AMAZONICA	20/05/14	E1	18
699	PIARCO	PARAMARIBO	20/05/14	E1	31
700	PANAMA	BOGOTA	20/05/14	E1	31
701	CENTRAL AMERICA	PANAMA	20/05/14	E1	13
702	MONTEVIDEO	EZEIZA	20/05/14	E2	39
703	ATLANTICO	MONTEVIDEO	20/05/14	E2	22
704	GUAYAQUIL	BOGOTA	21/05/14	E1	25
705	CURAZAO	ST. DOMINGO	21/05/14	E1	26
707	CURAZAO	ST. DOMINGO	21/05/14	E1	26
708	BOGOTA	GUAYAQUIL	22/05/14	E1	35
709	LIMA	AMAZONICA	22/05/14	E2	22
711	CENTRAL AMERICA	BOGOTA	23/05/14	E2	34
712	MONTEVIDEO	EZEIZA	23/05/14	E2	51
713	ATLANTICO	MONTEVIDEO	23/05/14	E2	22
714	MEXICO	CENTRAL AMERICA	23/05/14	E2	27
717	MEXICO	HABANA	24/05/14	E2	27
718	ANTOFAGASTA - (LIMA)	LIMA	24/05/14	E2	22
719	SAN JUAN - (ST. DOMINGO)	ST. DOMINGO	24/05/14	E1	18
720	SAN JUAN - (ST. DOMINGO)	ST. DOMINGO	24/05/14	E1	18
721	GUAYAQUIL	BOGOTA	25/05/14	E1	23
722	LIMA	ANTOFAGASTA	25/05/14	E1	18
723	RESISTENCIA	EZEIZA	25/05/14	E1	31
724	CENTRAL AMERICA	HABANA	26/05/14	E1	13
726	CAYENNE	ATLANTICO	28/05/14	E1	39
728	CURAZAO	ST. DOMINGO	29/05/14	E1	30
729	NEW YORK - (PIARCO)	PIARCO	29/05/14	E1	18
730	CENTRAL AMERICA	CENTRAL AMERICA	29/05/14	D	9
731	CENTRAL AMERICA - (HABANA)	HABANA	29/05/14	E1	18
732	BOGOTA	AMAZONICA	31/05/14	E1	18
733	ST. DOMINGO	CURAZAO	31/05/14	E1	18
734	CURITIBA	APP SP	31/05/14	E1	26
736	CURITIBA	APP SP	31/05/14	E1	26
737	MONTEVIDEO - (RESISTENCIA)	RESISTENCIA	01/06/14	E2	34
738	BOGOTA	GUAYAQUIL	01/06/14	E2	39
739	MEXICO	CENTRAL AMERICA	01/06/14	E1	18
740	GUAYAQUIL	BOGOTA	01/06/14	E1	20
742	BOGOTA	PANAMA	01/06/14	E2	22
745	CURAZAO	ST. DOMINGO	01/06/14	E1	26

LHD Sequence	FIR Suffering Risk	FIR Generating Risk	Date of the Event	GTE Code	Risk Value
746	BOGOTA	GUAYAQUIL	02/06/14	E1	35
747	BOGOTA	MAIQUETIA	03/06/14	E1	18
748	CENTRAL AMERICA	PANAMA	03/06/14	E1	13
749	CURAZAO	BARRANQUILLA	03/06/14	E2	34
750	BOGOTA	GUAYAQUIL	04/06/14	E1	20
752	GUAYAQUIL - (LIMA)	LIMA	05/06/14	E2	22
753	GUAYAQUIL	CENTRAL AMERICA	05/06/14	E1	18
754	HABANA	PILOTO	06/06/14	H	19
755	HABANA	HABANA	06/06/14	D	14
756	CURAZAO	ST. DOMINGO	06/06/14	E1	26
757	RESISTENCIA	CORDOBA	06/06/14	E2	22
758	GUAYAQUIL	BOGOTA	06/06/14	E1	18
759	GUAYAQUIL	LIMA	07/06/14	E1	20
760	GUAYAQUIL	BOGOTA	07/06/14	E1	20
761	GUAYAQUIL	BOGOTA	07/06/14	E1	23
762	GUAYAQUIL	BOGOTA	07/06/14	E1	20
763	CURAZAO	MAIQUETIA	07/06/14	E1	13
764	CENTRAL AMERICA	MEXICO	08/06/14	E1	26
765	MEXICO	CENTRAL AMERICA	08/06/14	E1	18
766	ST. DOMINGO	PORT AU PRINCE	08/06/14	E1	20
768	CURITIBA	AERONAVE	09/06/14	I	18
770	ANTOFAGASTA	LIMA	09/06/14	E1	18
771	LIMA	LA PAZ	09/06/14	E1	31
772	CURAZAO	ST. DOMINGO	09/06/14	E1	26
773	BOGOTA	GUAYAQUIL	09/06/14	E1	31
774	GUAYAQUIL	LIMA	10/06/14	E1	23
775	GUAYAQUIL	LIMA	10/06/14	E2	25
776	GUAYAQUIL	BOGOTA	10/06/14	E2	25
777	CENTRAL AMERICA	GUAYAQUIL	10/06/14	E1	34
778	CURAZAO	BARRANQUILLA	10/06/14	E1	26
779	CURAZAO	BARRANQUILLA	10/06/14	E2	34
781	AMAZONICA	CAYENNE	11/06/14	E2	17
782	AMAZONICA	MAIQUETIA	11/06/14	E1	13
783	PORT AU PRINCE	ST. DOMINGO	12/06/14	E2	39
785	CENTRAL AMERICA	BOGOTA	12/06/14	F	34
786	CURITIBA	ASUNCION	13/06/14	E1	18
787	ASUNCION	LA PAZ	13/06/14	E2	39
788	ST. DOMINGO	PORT AU PRINCE	13/06/14	E2	22

LHD Sequence	FIR Suffering Risk	FIR Generating Risk	Date of the Event	GTE Code	Risk Value
789	GUAYAQUIL	BOGOTA	14/06/14	E1	20
790	BOGOTA	PANAMA	14/06/14	E1	31
791	GUAYAQUIL	CENTRAL AMERICA	14/06/14	E1	23
792	BOGOTA	GUAYAQUIL	14/06/14	E1	35
793	GUAYAQUIL	BOGOTA	14/06/14	E1	20
794	BOGOTA	GUAYAQUIL	14/06/14	E1	20
795	GUAYAQUIL	CENTRAL AMERICA	14/06/14	E1	18
796	BOGOTA	GUAYAQUIL	14/06/14	E1	31
797	CURAZAO	BARRANQUILLA	14/06/14	E2	34
799	MEXICO	CENTRAL AMERICA	14/06/14	E2	22
800	MEXICO	CENTRAL AMERICA	14/06/14	E1	18
801	GUAYAQUIL - (LIMA)	LIMA	15/06/14	E1	31
802	BOGOTA	PANAMA	15/06/14	E1	18
803	LA PAZ - (LIMA)	LIMA	15/06/14	E1	31
804	LA PAZ - (LIMA)	LIMA	15/06/14	E1	31
805	CENTRAL AMERICA	PANAMA	16/06/14	E2	17
806	CENTRAL AMERICA - (MEXICO)	MEXICO	16/06/14	E2	22
807	LA PAZ	CORDOBA	17/06/14	E1	23
808	BRASILIA	AERONAVE	18/06/14	H	23
809	CENTRAL AMERICA	MEXICO	18/06/14	E2	17
810	CENTRAL AMERICA	PANAMA	18/06/14	E2	17
811	CURAZAO	ST. DOMINGO	18/06/14	E1	30
812	CENTRAL AMERICA	PANAMA	19/06/14	E2	17
813	GUAYAQUIL	BOGOTA	19/06/14	E1	20
814	PANAMA - (CENTRAL AMERICA)	CENTRAL AMERICA	19/06/14	E1	13
815	AMAZONICA	MAIQUETIA	20/06/14	E2	17
816	GUAYAQUIL	BOGOTA	22/06/14	E2	25
817	BOGOTA	BARRANQUILLA	22/06/14	E1	18
819	ANTOFAGASTA	LIMA	22/06/14	E1	34
820	BOGOTA	GUAYAQUIL	22/06/14	E1	35
821	GUAYAQUIL	BOGOTA	23/06/14	E1	23
822	AMAZONICA	PARAMARIBO	23/06/14	E1	13
823	AMAZONICA	PARAMARIBO	23/06/14	E1	13
824	GUAYAQUIL	BOGOTA	23/06/14	E1	20
825	KINGSTON - (CENTRAL AMERICA)	CENTRAL AMERICA	23/06/14	E1	13
826	HABANA	CENTRAL AMERICA	24/06/14	E1	18
827	RESISTENCIA	CORDOBA	24/06/14	E1	26
828	MIAMI	HABANA	24/06/14	E1	13

LHD Sequence	FIR Suffering Risk	FIR Generating Risk	Date of the Event	GTE Code	Risk Value
829	LIMA	AMAZONICA	24/06/14	E2	22
830	LIMA	GUAYAQUIL	25/06/14	E1	18
831	ST. DOMINGO	SAN JUAN	25/06/14	E2	22
832	ATLANTICO	DAKAR	26/06/14	E2	22
834	CENTRAL AMERICA	MEXICO	27/06/14	E2	17
835	GUAYAQUIL	BOGOTA	27/06/14	E1	23
836	PORT AU PRINCE	ST. DOMINGO	28/06/14	E1	31
838	BOGOTA	GUAYAQUIL	29/06/14	E1	35
839	GUAYAQUIL	CENTRAL AMERICA	30/06/14	E1	23
840	GUAYAQUIL	CENTRAL AMERICA	30/06/14	E2	27
841	MEXICO - (CENTRAL AMERICA)	CENTRAL AMERICA	30/06/14	E1	26
843	CURAZAO	ST. DOMINGO	30/06/14	E1	26
844	MEXICO	CENTRAL AMERICA	30/06/14	E2	22
845	ASUNCION	CURITIBA	01/07/14	E1	26
846	CURAZAO	ST. DOMINGO	01/07/14	E1	26
847	LIMA	BOGOTA	01/07/14	E2	22
849	AMAZONICA	CAYENNE	02/07/14	E2	17
850	PORT AU PRINCE	ST. DOMINGO	02/07/14	E2	39
851	HABANA	CENTRAL AMERICA	02/07/14	E1	18
852	CENTRAL AMERICA - (HABANA)	HABANA	02/07/14	E1	18
853	BOGOTA	BARRANQUILLA	02/07/14	E2	22
855	AMAZONICA	BOGOTA	03/07/14	E1	18
856	CURAZAO	BARRANQUILLA	03/07/14	E1	26
857	MEXICO	CENTRAL AMERICA	03/07/14	E2	22
859	HABANA	PILOTO	04/07/14	M	11
861	GUAYAQUIL - (CENTRAL AMERICA)	CENTRAL AMERICA	05/07/14	E2	22
862	ATLANTICO	MONTEVIDEO	05/07/14	E2	22
863	CENTRAL AMERICA	BOGOTA	06/07/14	E2	34
864	BARRANQUILLA - (CURAZAO)	CURAZAO	06/07/14	E1	13
865	GUAYAQUIL	CENTRAL AMERICA	07/07/14	E2	22
866	AMAZONICA	BRASILIA	07/07/14	E2	17
867	AMAZONICA	RECIFE	08/07/14	E2	17
868	CENTRAL AMERICA - (MEXICO)	MEXICO	09/07/14	E1	18
869	BOGOTA	PANAMA	10/07/14	E2	22
870	CENTRAL AMERICA	PANAMA	12/07/14	E2	17
871	LIMA	LA PAZ	12/07/14	E2	39
872	COMODORO RIVADAVIA	MOUNT PLEASANT	12/07/14	E2	34
873	GUAYAQUIL	BOGOTA	12/07/14	E1	18

LHD Sequence	FIR Suffering Risk	FIR Generating Risk	Date of the Event	GTE Code	Risk Value
874	GUAYAQUIL	BOGOTA	13/07/14	E2	25
875	PORT AU PRINCE	ST. DOMINGO	13/07/14	E1	35
876	RESISTENCIA	CORDOBA	13/07/14	E2	34
877	AMAZONICA	BOGOTA	14/07/14	E1	13
878	AMAZONICA	BOGOTA	14/07/14	E1	13
879	LA PAZ	CORDOBA	15/07/14	E1	23
880	PORT AU PRINCE	MIAMI	15/07/14	E1	31
882	CURAZAO	ST. DOMINGO	15/07/14	E2	34
883	LIMA	GUAYAQUIL	15/07/14	E2	22
884	AMAZONICA	BOGOTA	16/07/14	E2	22
885	AMAZONICA	BOGOTA	16/07/14	E2	22
887	BOGOTA	GUAYAQUIL	16/07/14	E2	45
888	ST. DOMINGO	PORT AU PRINCE	17/07/14	E2	22
889	CURAZAO	ST. DOMINGO	17/07/14	E1	26
890	MAIQUETIA	BARRANQUILLA	17/07/14	E1	13
891	MAIQUETIA	BARRANQUILLA	17/07/14	E2	17
892	ANTOFAGASTA	LIMA	18/07/14	E2	34
894	GUAYAQUIL	BOGOTA	18/07/14	E2	25
895	ATLANTICO	ABIDJAN	18/07/14	E1	18
896	CENTRAL AMERICA	MEXICO	18/07/14	E1	13
898	RECIFE	PILOTO	18/07/14	A	13
900	GUAYAQUIL	CENTRAL AMERICA	18/07/14	E1	18
901	CENTRAL AMERICA	HABANA	19/07/14	E1	13
902	ATLANTICO	LUANDA	19/07/14	E2	22
903	BOGOTA	GUAYAQUIL	19/07/14	E2	45
904	ATLANTICO	MONTEVIDEO	19/07/14	E2	22
905	COMODORO RIVADAVIA	MOUNT PLEASANT	19/07/14	E2	34
906	GUAYAQUIL	BOGOTA	19/07/14	E1	20
907	CENTRAL AMERICA - (HABANA)	HABANA	20/07/14	E1	18
908	HABANA	CENTRAL AMERICA	20/07/14	E2	22
909	BOGOTA	PANAMA	21/07/14	E1	31
910	BOGOTA	PANAMA	21/07/14	E1	31
911	GUAYAQUIL	CENTRAL AMERICA	21/07/14	E1	18
913	CURAZAO	MAIQUETIA	21/07/14	E1	13
914	PORT AU PRINCE - (ST. DOMINGO)	ST. DOMINGO	21/07/14	E1	35
915	AMAZONICA	BRASILIA	22/07/14	E2	22
917	BOGOTA	LIMA	22/07/14	E2	22
918	LIMA	GUAYAQUIL	23/07/14	E1	18

LHD Sequence	FIR Suffering Risk	FIR Generating Risk	Date of the Event	GTE Code	Risk Value
919	PORT AU PRINCE	ST. DOMINGO	23/07/14	E1	35
920	CURAZAO	BARRANQUILLA	23/07/14	E1	26
921	GUAYAQUIL	BOGOTA	23/07/14	E1	20
922	BOGOTA	PANAMA	23/07/14	E1	31
923	CENTRAL AMERICA - (MEXICO)	MEXICO	23/07/14	E1	26
924	BOGOTA	PANAMA	23/07/14	E1	31
925	MEXICO	CENTRAL AMERICA	24/07/14	E1	26
926	AMAZONICA	LA PAZ	24/07/14	E1	13
927	CENTRAL AMERICA	MEXICO	24/07/14	E1	13
928	PIARCO	MAIQUETIA	24/07/14	E2	27
929	BOGOTA	BARRANQUILLA	25/07/14	E2	22
930	AMAZONICA	MAIQUETIA	25/07/14	E1	13
931	BOGOTA	MAIQUETIA	25/07/14	E1	18
932	LIMA - (ANTOFAGASTA)	ANTOFAGASTA	26/07/14	E1	13
933	MENDOZA - (SANTIAGO)	SANTIAGO	26/07/14	E1	13
934	ST. DOMINGO	CURAZAO	26/07/14	E1	18
935	CURAZAO	BARRANQUILLA	26/07/14	E1	26
936	COMODORO RIVADAVIA	MOUNT PLEASANT	26/07/14	E2	34
937	GUAYAQUIL	BOGOTA	27/07/14	E1	18
938	GUAYAQUIL	BOGOTA	27/07/14	E1	20
939	ANTOFAGASTA	LIMA	27/07/14	E1	34
940	BOGOTA	AMAZONICA	27/07/14	E1	18
941	CENTRAL AMERICA	PILOTO	27/07/14	M	13
942	SAN JUAN - (PIARCO)	PIARCO	27/07/14	E1	18
943	ST. DOMINGO	PORT AU PRINCE	28/07/14	E1	20
944	BOGOTA	GUAYAQUIL	28/07/14	E1	20
946	CURAZAO	ST. DOMINGO	28/07/14	E1	30
947	GUAYAQUIL	BOGOTA	29/07/14	E1	20
948	ANTOFAGASTA	PILOTO	29/07/14	M	13
949	CENTRAL AMERICA - (MEXICO)	MEXICO	29/07/14	E1	26
951	CENTRAL AMERICA	MEXICO	29/07/14	E1	13
953	MEXICO	CENTRAL AMERICA	29/07/14	E1	26
954	GUAYAQUIL	LIMA	29/07/14	E1	18
955	CENTRAL AMERICA	KINGSTON	29/07/14	E2	17
956	BOGOTA	AMAZONICA	30/07/14	E1	18
957	BOGOTA	MAIQUETIA	30/07/14	E1	18
958	CENTRAL AMERICA - (MEXICO)	MEXICO	30/07/14	E1	26
960	ANTOFAGASTA	LIMA	31/07/14	E2	34

LHD Sequence	FIR Suffering Risk	FIR Generating Risk	Date of the Event	GTE Code	Risk Value
961	CENTRAL AMERICA - (MEXICO)	MEXICO	31/07/14	E2	34
963	CURAZAO	KINGSTON	31/07/14	E2	34
965	BOGOTA	GUAYAQUIL	01/08/14	E2	45
966	PORT AU PRINCE	ST. DOMINGO	01/08/14	E1	31
967	BOGOTA - (LIMA)	LIMA	01/08/14	E2	34
968	CURAZAO	ST. DOMINGO	02/08/14	E2	22
969	BOGOTA	PANAMA	02/08/14	E2	22
970	GUAYAQUIL	BOGOTA	02/08/14	E1	20
971	MAIQUETIA	SAN JUAN	02/08/14	E1	26
972	GUAYAQUIL	BOGOTA	02/08/14	E1	20
973	CURAZAO	BARRANQUILLA	03/08/14	E1	18
974	PANAMA - (KINGSTON)	KINGSTON	03/08/14	E1	18
975	GUAYAQUIL	CENTRAL AMERICA	03/08/14	E1	31
977	GUAYAQUIL	BOGOTA	03/08/14	E1	20
978	MEXICO	CENTRAL AMERICA	04/08/14	E1	18
979	GUAYAQUIL	BOGOTA	04/08/14	E1	20
980	LIMA	LA PAZ	04/08/14	E2	39
981	CURAZAO - (PORT AU PRINCE)	PORT AU PRINCE	04/08/14	E2	39
982	ST. DOMINGO	MIAMI	04/08/14	E1	18
983	RESISTENCIA	EZEIZA	04/08/14	E1	18
984	ST. DOMINGO - (CURAZAO)	CURAZAO	04/08/14	E2	17
985	BOGOTA	PANAMA	05/08/14	E1	23
986	CURAZAO	BARRANQUILLA	05/08/14	E2	22
987	RESISTENCIA	ASUNCION	05/08/14	B	34
988	PORT AU PRINCE - (ST. DOMINGO)	ST. DOMINGO	06/08/14	E1	31
989	CURAZAO	MAIQUETIA	06/08/14	E1	13
990	BOGOTA	MAIQUETIA	06/08/14	E1	18
991	BOGOTA	PANAMA	06/08/14	E1	18
992	BOGOTA	PANAMA	06/08/14	E2	22
994	ANTOFAGASTA	LIMA	07/08/14	E1	31
995	ANTOFAGASTA	LIMA	07/08/14	E1	39
996	PORT AU PRINCE	ST. DOMINGO	07/08/14	E1	31
997	CENTRAL AMERICA	GUAYAQUIL	07/08/14	E2	51
998	ST. DOMINGO	PORT AU PRINCE	07/08/14	E2	22
999	BOGOTA	PANAMA	08/08/14	E1	18
1000	BOGOTA	AMAZONICA	08/08/14	E1	18
1001	ATLANTICO	MONTEVIDEO	08/08/14	E2	22
1002	HABANA - (CENTRAL AMERICA)	CENTRAL AMERICA	08/08/14	E1	23

LHD Sequence	FIR Suffering Risk	FIR Generating Risk	Date of the Event	GTE Code	Risk Value
1003	CAYENNE	AMAZONICA	09/08/14	E1	31
1004	GUAYAQUIL	BOGOTA	09/08/14	E1	20
1005	CURAZAO	ST. DOMINGO	09/08/14	E1	20
1006	GUAYAQUIL	BOGOTA	09/08/14	E2	25
1007	ATLANTICO	MONTEVIDEO	10/08/14	E2	22
1008	LIMA	ANTOFAGASTA	10/08/14	E2	22
1009	BOGOTA	BARRANQUILLA	11/08/14	E1	18
1010	BOGOTA	PANAMA	11/08/14	E1	31
1011	GUAYAQUIL	BOGOTA	11/08/14	E1	20
1012	LIMA	GUAYAQUIL	12/08/14	E1	25
1013	ATLANTICO	MONTEVIDEO	12/08/14	E2	22
1014	SANTIAGO	PILOTO	13/08/14	C	19
1015	PIARCO	PILOTO	13/08/14	B	27
1016	CENTRAL AMERICA	KINGSTON	13/08/14	E2	22
1017	BOGOTA	GUAYAQUIL	15/08/14	E1	35
1019	HABANA	MIAMI	15/08/14	D	14
1020	ASUNCION	LA PAZ	16/08/14	E2	34
1022	BOGOTA	CENTRAL AMERICA	16/08/14	E1	31
1023	BOGOTA	GUAYAQUIL	16/08/14	E1	35
1024	RESISTENCIA	CURITIBA	16/08/14	E1	34
1025	CURAZAO	ST. DOMINGO	16/08/14	E1	18
1026	CENTRAL AMERICA - (MEXICO)	MEXICO	16/08/14	E1	18
1027	GUAYAQUIL	CENTRAL AMERICA	16/08/14	E1	18
1028	KINGSTON - (CENTRAL AMERICA)	CENTRAL AMERICA	17/08/14	E1	18
1029	GUAYAQUIL	BOGOTA	17/08/14	E1	31
1030	MEXICO	CENTRAL AMERICA	19/08/14	E2	34
1031	GUAYAQUIL	BOGOTA	19/08/14	E2	25
1032	GUAYAQUIL	BOGOTA	19/08/14	E1	20
1033	GUAYAQUIL	BOGOTA	19/08/14	E1	18
1034	GUAYAQUIL	BOGOTA	19/08/14	E1	18
1035	BOGOTA	MAIQUETIA	19/08/14	E2	22
1036	HABANA	CENTRAL AMERICA	19/08/14	E1	13
1038	MEXICO - (CENTRAL AMERICA)	CENTRAL AMERICA	20/08/14	E2	22
1039	PORT AU PRINCE	ST. DOMINGO	20/08/14	E1	35
1040	CURAZAO	BARRANQUILLA	20/08/14	E2	22
1041	GUAYAQUIL	CENTRAL AMERICA	20/08/14	E1	18
1042	CURAZAO	BARRANQUILLA	21/08/14	E1	18
1043	CURAZAO	ST. DOMINGO	21/08/14	E1	18
1044	GUAYAQUIL	BOGOTA	21/08/14	E2	25

LHD Sequence	FIR Suffering Risk	FIR Generating Risk	Date of the Event	GTE Code	Risk Value
1045	ANTOFAGASTA	CORDOBA	22/08/14	E1	26
1046	BOGOTA	GUAYAQUIL	22/08/14	E1	35
1047	BOGOTA	GUAYAQUIL	22/08/14	E1	35
1048	BOGOTA - (GUAYAQUIL)	GUAYAQUIL	22/08/14	E2	22
1049	CURAZAO	KINGSTON	23/08/14	E1	18
1050	CURITIBA	APP SP	23/08/14	E2	22
1051	GUAYAQUIL - (LIMA)	LIMA	23/08/14	E1	20
1052	ST. DOMINGO	MIAMI	24/08/14	E1	18
1053	GUAYAQUIL	LIMA	24/08/14	E1	15
1054	PORT AU PRINCE	ST. DOMINGO	24/08/14	E1	35
1055	PORT AU PRINCE	ST. DOMINGO	24/08/14	E1	31
1056	GUAYAQUIL	BOGOTA	24/08/14	E2	40
1058	GUAYAQUIL	LIMA	24/08/14	E1	13
1059	ST. DOMINGO	CURAZAO	25/08/14	E2	22
1060	MENDOZA - (SANTIAGO)	SANTIAGO	25/08/14	E2	17
1061	MEXICO	CENTRAL AMERICA	25/08/14	E1	26
1062	LIMA	BOGOTA	26/08/14	E1	18
1063	MEXICO	CENTRAL AMERICA	26/08/14	E1	18
1064	CENTRAL AMERICA - (GUAYAQUIL)	GUAYAQUIL	26/08/14	E1	13
1066	GUAYAQUIL	BOGOTA	27/08/14	E1	20
1067	GUAYAQUIL	BOGOTA	27/08/14	E1	20
1068	MEXICO	CENTRAL AMERICA	27/08/14	E2	34
1069	GUAYAQUIL	CENTRAL AMERICA	28/08/14	E1	18
1070	CENTRAL AMERICA	PILOTO	28/08/14	I	14
1072	GUAYAQUIL	BOGOTA	28/08/14	E1	20
1074	BOGOTA	PANAMA	28/08/14	E1	18
1075	GUAYAQUIL	BOGOTA	29/08/14	E1	18
1076	ATLANTICO	MONTEVIDEO	29/08/14	E2	22
1077	GUAYAQUIL	BOGOTA	29/08/14	E1	15
1079	ANTOFAGASTA	LIMA	29/08/14	E1	18
1080	CURAZAO	ST. DOMINGO	30/08/14	E2	25
1081	BOGOTA	GUAYAQUIL	31/08/14	E1	31
1082	BOGOTA	GUAYAQUIL	31/08/14	E1	35
1084	CENTRAL AMERICA	MEXICO	31/08/14	E2	22
1085	ST. DOMINGO	PORT AU PRINCE	01/09/14	E1	20
1087	GUAYAQUIL	LIMA	01/09/14	E1	20
1089	BOGOTA	PANAMA	01/09/14	E1	31
1090	BOGOTA	GUAYAQUIL	01/09/14	E2	25

LHD Sequence	FIR Suffering Risk	FIR Generating Risk	Date of the Event	GTE Code	Risk Value
1091	GUAYAQUIL	BOGOTA	02/09/14	E1	15
1092	BOGOTA	GUAYAQUIL	03/09/14	E1	31
1094	BOGOTA	MAIQUETIA	03/09/14	E1	18
1095	PORT AU PRINCE	CURAZAO	04/09/14	E1	31
1096	BOGOTA	PANAMA	04/09/14	E1	18
1097	BOGOTA	GUAYAQUIL	04/09/14	E1	31
1098	HABANA	PILOTO	04/09/14	M	6
1099	GUAYAQUIL	BOGOTA	04/09/14	E1	15
1100	CURAZAO	BARRANQUILLA	04/09/14	E1	26
1101	MEXICO	CENTRAL AMERICA	04/09/14	E2	22
1102	KINGSTON	BARRANQUILLA	04/09/14	E1	18
1103	ST. DOMINGO	SAN JUAN	04/09/14	E1	18
1104	GUAYAQUIL	BOGOTA	05/09/14	E1	13
1105	GUAYAQUIL	BOGOTA	05/09/14	E1	15
1106	CURITIBA	MONTEVIDEO	05/09/14	E1	18
1108	BOGOTA	PANAMA	05/09/14	E1	31
1109	BOGOTA	PANAMA	05/09/14	E1	18
1110	BOGOTA	PILOTO	05/09/14	A	21
1111	ANTOFAGASTA - (LIMA)	LIMA	06/09/14	E1	26
1112	BOGOTA	PANAMA	06/09/14	E1	31
1113	CURAZAO	ST. DOMINGO	06/09/14	E1	30
1114	ST. DOMINGO	CURAZAO	06/09/14	E2	25
1115	COMODORO RIVADAVIA	MOUNT PLEASANT	06/09/14	E2	34
1116	PORT AU PRINCE - (ST. DOMINGO)	ST. DOMINGO	07/09/14	E2	45
1117	BOGOTA	PANAMA	07/09/14	F	18
1118	HABANA	PILOTO	07/09/14	M	6
1119	GUAYAQUIL	BOGOTA	09/09/14	E2	25
1120	CURITIBA	BRASILIA	09/09/14	E2	22
1121	MEXICO	CENTRAL AMERICA	09/09/14	E1	26
1122	LIMA	ANTOFAGASTA	10/09/14	E1	18
1123	CURITIBA	AERONAVE	10/09/14	I	14
1124	ST. DOMINGO	PORT AU PRINCE	10/09/14	E1	20
1125	ST. DOMINGO	CURAZAO	10/09/14	E1	20
1126	CENTRAL AMERICA	GUAYAQUIL	11/09/14	E1	39
1127	MEXICO	CENTRAL AMERICA	11/09/14	E1	31
1128	BOGOTA	PANAMA	11/09/14	E2	39
1129	BOGOTA	GUAYAQUIL	11/09/14	E2	25
1130	BOGOTA	MAIQUETIA	12/09/14	E2	22

LHD Sequence	FIR Suffering Risk	FIR Generating Risk	Date of the Event	GTE Code	Risk Value
1131	COMODORO RIVADAVIA	MOUNT PLEASANT	12/09/14	E2	34
1132	CENTRAL AMERICA - (MEXICO)	MEXICO	12/09/14	E1	26
1133	PANAMA	BOGOTA	12/09/14	E1	13
1135	CURITIBA	PILOTO	12/09/14	H	14
1136	PORT AU PRINCE	ST. DOMINGO	12/09/14	E1	35
1137	KINGSTON	CURAZAO	12/09/14	E2	46
1138	BOGOTA	PANAMA	12/09/14	E1	31
1139	MEXICO - (CENTRAL AMERICA)	CENTRAL AMERICA	13/09/14	E1	18
1140	BOGOTA	PANAMA	13/09/14	E2	39
1141	RESISTENCIA	ASUNCION	13/09/14	E1	26
1142	MEXICO	CENTRAL AMERICA	13/09/14	E1	18
1143	GUAYAQUIL	BOGOTA	13/09/14	E1	15
1144	PORT AU PRINCE	MIAMI	14/09/14	E1	31
1146	ST. DOMINGO	CURAZAO	14/09/14	E1	20
1147	LA PAZ	ASUNCION	15/09/14	E1	23
1148	PORT AU PRINCE	ST. DOMINGO	15/09/14	E1	31
1149	MEXICO	CENTRAL AMERICA	15/09/14	E1	26
1150	LA PAZ	AMAZONICA	15/09/14	E1	23
1151	AMAZONICA	BRASILIA	16/09/14	E1	13
1152	BOGOTA	MAIQUETIA	16/09/14	E1	18
1153	LA PAZ	LIMA	16/09/14	E1	33
1154	BRASILIA	PILOTO	16/09/14	A	18
1155	CENTRAL AMERICA - (MEXICO)	MEXICO	16/09/14	E1	18
1156	CURITIBA	MONTEVIDEO	17/09/14	E2	22
1158	AMAZONICA	LIMA	17/09/14	E2	17
1159	CURAZAO	ST. DOMINGO	17/09/14	E1	26
1160	AMAZONICA	BOGOTA	17/09/14	E2	17
1161	CURAZAO	MAIQUETIA	17/09/14	E1	13
1163	LIMA	BOGOTA	17/09/14	E2	39
1164	GUAYAQUIL	BOGOTA	18/09/14	E1	18
1165	LA PAZ	CORDOBA	18/09/14	E1	39
1166	MIAMI	HABANA	18/09/14	E1	13
1168	ST. DOMINGO	SAN JUAN	18/09/14	E1	18
1169	BOGOTA	PANAMA	18/09/14	E1	18
1170	PORT AU PRINCE	ST. DOMINGO	18/09/14	E1	35
1171	LA PAZ	AMAZONICA	19/09/14	E1	23
1172	ATLANTICO	LUANDA	19/09/14	E1	18
1173	KINGSTON	PANAMA	19/09/14	E2	22

LHD Sequence	FIR Suffering Risk	FIR Generating Risk	Date of the Event	GTE Code	Risk Value
1174	ATLANTICO	MONTEVIDEO	19/09/14	E2	22
1175	PORT AU PRINCE	MIAMI	19/09/14	E1	31
1176	LIMA	GUAYAQUIL	20/09/14	E2	27
1177	BOGOTA	MAIQUETIA	21/09/14	E2	22
1178	BOGOTA	MAIQUETIA	21/09/14	F	22
1179	LA PAZ	AMAZONICA	21/09/14	E1	23
1180	GUAYAQUIL	BOGOTA	21/09/14	E1	20
1181	BOGOTA	LIMA	21/09/14	E1	18
1182	LA PAZ	CURITIBA	22/09/14	E1	39
1183	ST. DOMINGO	CURAZAO	22/09/14	E1	18
1184	GUAYAQUIL	BOGOTA	22/09/14	E2	20
1185	BOGOTA	PANAMA	22/09/14	E2	22
1186	GUAYAQUIL	CENTRAL AMERICA	22/09/14	E1	13
1187	AMAZONICA	RECIFE	22/09/14	E2	17
1188	LA PAZ	AMAZONICA	22/09/14	E1	23
1191	LA PAZ	CORDOBA	23/09/14	E1	23
1192	CORDOBA	LA PAZ	23/09/14	E2	29
1193	BOGOTA	GUAYAQUIL	23/09/14	E1	20
1194	PORT AU PRINCE	ST. DOMINGO	23/09/14	E1	31
1195	CURITIBA	APP RJ	23/09/14	E1	18
1196	COMODORO RIVADAVIA	MOUNT PLEASANT	24/09/14	E2	34
1197	EZEIZA	COMODORO RIVADAVIA	24/09/14	E2	34
1198	GUAYAQUIL	BOGOTA	24/09/14	E1	15
1199	MONTEVIDEO	EZEIZA	24/09/14	E2	22
1200	ATLANTICO	MONTEVIDEO	24/09/14	E2	39
1201	GUAYAQUIL	BOGOTA	25/09/14	E2	25
1202	PORT AU PRINCE - (ST. DOMINGO)	ST. DOMINGO	25/09/14	E2	39
1203	CURAZAO	KINGSTON	25/09/14	E1	26
1205	GUAYAQUIL	BOGOTA	26/09/14	E2	20
1206	GUAYAQUIL	BOGOTA	26/09/14	E1	15
1207	BOGOTA	AMAZONICA	26/09/14	E1	18
1208	BOGOTA	PANAMA	27/09/14	E2	22
1209	BOGOTA	BARRANQUILLA	27/09/14	E2	22
1210	BOGOTA	BARRANQUILLA	27/09/14	E2	22
1211	BOGOTA	AMAZONICA	27/09/14	E1	18
1212	LA PAZ	CURITIBA	27/09/14	E2	27
1213	LA PAZ	CURITIBA	27/09/14	E2	27
1214	BOGOTA	PANAMA	27/09/14	E1	18

LHD Sequence	FIR Suffering Risk	FIR Generating Risk	Date of the Event	GTE Code	Risk Value
1215	COMODORO RIVADAVIA	MOUNT PLEASANT	27/09/14	E2	34
1216	EZEIZA	COMODORO RIVADAVIA	27/09/14	E2	34
1217	LA PAZ	CORDOBA	27/09/14	E1	23
1218	BOGOTA	PANAMA	28/09/14	E1	18
1219	PIARCO	PARAMARIBO	28/09/14	E2	39
1221	ANTOFAGASTA - (LIMA)	LIMA	28/09/14	E1	18
1222	GUAYAQUIL	LIMA	28/09/14	E1	18
1223	ATLANTICO	ABIDJAN	28/09/14	E2	22
1224	CENTRAL AMERICA - (MEXICO)	MEXICO	28/09/14	E1	18
1225	BOGOTA	GUAYAQUIL	29/09/14	E1	35
1226	ST. DOMINGO	PORT AU PRINCE	29/09/14	E2	25
1227	ST. DOMINGO	PORT AU PRINCE	29/09/14	E2	22
1228	ATLANTICO	MONTEVIDEO	30/09/14	E2	22
1229	GUAYAQUIL	BOGOTA	30/09/14	E1	15
1230	BOGOTA	PANAMA	30/09/14	E1	18
1231	KINGSTON	HABANA	30/09/14	E1	18
1232	LA PAZ	ASUNCION	01/10/14	E1	23
1233	GUAYAQUIL	BOGOTA	01/10/14	E1	15
1234	BOGOTA	GUAYAQUIL	01/10/14	E1	35
1235	BOGOTA	GUAYAQUIL	01/10/14	E2	45
1237	CURAZAO	KINGSTON	01/10/14	E1	18
1238	BOGOTA	GUAYAQUIL	02/10/14	E1	31
1239	AMAZONICA	MAIQUETIA	02/10/14	E2	17
1240	BOGOTA	PANAMA	03/10/14	E1	31
1241	COMODORO RIVADAVIA	MOUNT PLEASANT	03/10/14	E2	34
1242	BOGOTA	AMAZONICA	03/10/14	E2	22
1243	BOGOTA	GUAYAQUIL	03/10/14	E2	45
1244	AMAZONICA - (LIMA)	LIMA	04/10/14	E2	22
1245	CENTRAL AMERICA	PANAMA	04/10/14	E1	18
1246	BOGOTA	AMAZONICA	04/10/14	E2	22
1247	BOGOTA	AMAZONICA	04/10/14	E2	22
1248	AMAZONICA	MAIQUETIA	05/10/14	E2	22
1249	GUAYAQUIL - (LIMA)	LIMA	05/10/14	E1	20
1250	BOGOTA	PANAMA	05/10/14	E1	18
1251	BOGOTA	PANAMA	05/10/14	E1	18
1252	BOGOTA	PANAMA	05/10/14	E2	22
1253	RESISTENCIA	ASUNCION	05/10/14	E1	26
1254	NEW YORK - (PIARCO)	PIARCO	06/10/14	E2	22

LHD Sequence	FIR Suffering Risk	FIR Generating Risk	Date of the Event	GTE Code	Risk Value
1255	BOGOTA	AMAZONICA	06/10/14	E2	22
1256	BOGOTA	AMAZONICA	06/10/14	E2	22
1257	BOGOTA	AMAZONICA	06/10/14	E2	22
1258	BOGOTA	AMAZONICA	06/10/14	E2	22
1259	ANTOFAGASTA	CORDOBA	06/10/14	E1	34
1260	PORT AU PRINCE	ST. DOMINGO	06/10/14	E1	35
1261	CENTRAL AMERICA	PANAMA	06/10/14	E2	22
1262	CURAZAO	ST. DOMINGO	06/10/14	E1	18
1263	CURAZAO	ST. DOMINGO	06/10/14	E2	22
1264	GUAYAQUIL	BOGOTA	07/10/14	E1	20
1268	LA PAZ	RESISTENCIA	07/10/14	E1	23
1269	BOGOTA	GUAYAQUIL	07/10/14	E2	39
1270	LIMA	AMAZONICA	08/10/14	E1	18
1271	BOGOTA	GUAYAQUIL	08/10/14	E1	20
1272	CENTRAL AMERICA - (MEXICO)	MEXICO	08/10/14	E2	22
1273	LA PAZ	CURITIBA	09/10/14	E1	33
1274	BOGOTA	PANAMA	09/10/14	E1	31
1275	BOGOTA	PANAMA	09/10/14	E2	22
1276	AMAZONICA	AERONAVE	09/10/14	H	17
1277	BOGOTA	PANAMA	09/10/14	E2	39
1278	CURAZAO	BARRANQUILLA	09/10/14	E1	18
1279	LA PAZ	AMAZONICA	09/10/14	E1	23
1280	HABANA	PILOTO	09/10/14	M	6
1281	GUAYAQUIL	LIMA	10/10/14	E1	18
1283	BOGOTA	MAIQUETIA	10/10/14	E1	18
1284	PORT AU PRINCE	ST. DOMINGO	10/10/14	E1	35
1285	BRASILIA	PILOTO	10/10/14	C	18
1287	CENTRAL AMERICA	MEXICO	11/10/14	E1	31
1288	GUAYAQUIL	BOGOTA	11/10/14	E1	15
1290	CURAZAO	ST. DOMINGO	11/10/14	E1	20
1291	BOGOTA	PANAMA	12/10/14	E1	31
1292	BARRANQUILLA	CURAZAO	12/10/14	E2	22
1293	BARRANQUILLA	KINGSTON	12/10/14	E1	18
1294	GUAYAQUIL	BOGOTA	12/10/14	E2	25
1295	GUAYAQUIL	BOGOTA	13/10/14	E1	20
1296	BOGOTA	GUAYAQUIL	13/10/14	E1	35
1297	BARRANQUILLA	PANAMA	13/10/14	E2	27
1298	GUAYAQUIL	LIMA	13/10/14	E1	15

LHD Sequence	FIR Suffering Risk	FIR Generating Risk	Date of the Event	GTE Code	Risk Value
1300	BARRANQUILLA	KINGSTON	14/10/14	E2	22
1301	BOGOTA	PANAMA	14/10/14	E1	31
1302	LA PAZ	CURITIBA	14/10/14	E1	23
1303	BARRANQUILLA	PANAMA	14/10/14	E1	18
1305	LIMA	GUAYAQUIL	16/10/14	E1	31
1306	BARRANQUILLA	PANAMA	16/10/14	E1	18
1307	BARRANQUILLA	KINGSTON	16/10/14	E1	18
1308	BARRANQUILLA	KINGSTON	16/10/14	E2	22
1309	BARRANQUILLA	KINGSTON	16/10/14	E2	22
1311	GUAYAQUIL	BOGOTA	17/10/14	E1	20
1312	BARRANQUILLA	BOGOTA	17/10/14	E1	18
1313	BARRANQUILLA	BOGOTA	17/10/14	E1	18
1314	BARRANQUILLA	BOGOTA	17/10/14	E1	18
1315	GUAYAQUIL	BOGOTA	17/10/14	E1	20
1316	MEXICO	CENTRAL AMERICA	17/10/14	E1	18
1317	BARRANQUILLA	KINGSTON	17/10/14	E1	18
1318	GUAYAQUIL - (CENTRAL AMERICA)	CENTRAL AMERICA	17/10/14	E2	39
1319	BARRANQUILLA	PANAMA	18/10/14	F	14
1320	COMODORO RIVADAVIA	MOUNT PLEASANT	18/10/14	E2	34
1321	BOGOTA	GUAYAQUIL	18/10/14	E2	45
1322	BARRANQUILLA	BOGOTA	18/10/14	E2	22
1323	GUAYAQUIL	BOGOTA	19/10/14	E1	23
1324	GUAYAQUIL	CENTRAL AMERICA	19/10/14	E1	18
1325	CENTRAL AMERICA	MEXICO	19/10/14	E1	31
1326	BOGOTA	PANAMA	19/10/14	E1	18
1327	BOGOTA	GUAYAQUIL	19/10/14	E1	35
1328	CURITIBA	MONTEVIDEO	19/10/14	E2	22
1329	BOGOTA - (GUAYAQUIL)	GUAYAQUIL	19/10/14	F	25
1331	BARRANQUILLA	BOGOTA	19/10/14	E1	26
1332	BARRANQUILLA	BOGOTA	19/10/14	E1	18
1333	GUAYAQUIL	LIMA	20/10/14	E1	20
1334	PORT AU PRINCE	ST. DOMINGO	20/10/14	E1	31
1335	BARRANQUILLA	CURAZAO	20/10/14	E1	18
1336	BARRANQUILLA	BOGOTA	20/10/14	E1	18
1337	LA PAZ	LIMA	20/10/14	E1	23
1339	CURITIBA	RESISTENCIA	21/10/14	E2	22
1340	BARRANQUILLA	MAIQUETIA	21/10/14	E1	18
1343	PORT AU PRINCE	MIAMI	22/10/14	E1	31

LHD Sequence	FIR Suffering Risk	FIR Generating Risk	Date of the Event	GTE Code	Risk Value
1344	GUAYAQUIL	LIMA	22/10/14	E1	15
1345	BARRANQUILLA	PANAMA	23/10/14	E2	34
1346	GUAYAQUIL	LIMA	23/10/14	E2	20
1347	KINGSTON	BARRANQUILLA	23/10/14	E1	18
1348	GUAYAQUIL - (LIMA)	LIMA	23/10/14	E2	22
1350	MEXICO	CENTRAL AMERICA	23/10/14	E2	39
1351	BARRANQUILLA	BOGOTA	24/10/14	E2	34
1352	BARRANQUILLA	BOGOTA	24/10/14	E2	34
1353	BARRANQUILLA	BOGOTA	24/10/14	E1	23
1355	HABANA	PILOTO	24/10/14	I	14
1356	GUAYAQUIL	BOGOTA	24/10/14	E1	15
1357	BARRANQUILLA	CURAZAO	24/10/14	E2	22
1358	KINGSTON	PANAMA	25/10/14	E2	22
1359	GUAYAQUIL	LIMA	25/10/14	E2	22
1360	BARRANQUILLA	PANAMA	26/10/14	E1	18
1361	PORT AU PRINCE	ST. DOMINGO	26/10/14	E1	31
1363	ANTOFAGASTA - (LIMA)	LIMA	26/10/14	E1	18
1365	AMAZONICA	PARAMARIBO	26/10/14	E2	17
1366	BARRANQUILLA	CURAZAO	26/10/14	E2	39
1368	BARRANQUILLA	BOGOTA	26/10/14	E1	18
1371	CENTRAL AMERICA	MEXICO	27/10/14	E2	22
1374	BARRANQUILLA	KINGSTON	27/10/14	E1	18
1375	MEXICO	CENTRAL AMERICA	27/10/14	E1	18
1377	MEXICO	CENTRAL AMERICA	27/10/14	E1	18
1378	AMAZONICA	BOGOTA	27/10/14	E1	13
1379	CENTRAL AMERICA	GUAYAQUIL	27/10/14	E2	39
1380	MEXICO	CENTRAL AMERICA	28/10/14	E1	18
1381	MEXICO	CENTRAL AMERICA	28/10/14	E1	18
1382	AMAZONICA	BOGOTA	28/10/14	E2	17
1383	BOGOTA	MAIQUETIA	28/10/14	E1	18
1384	COMODORO RIVADAVIA	MOUNT PLEASANT	29/10/14	E2	34
1385	EZEIZA	COMODORO RIVADAVIA	29/10/14	E2	34
1386	MONTEVIDEO	EZEIZA	29/10/14	E2	22
1387	BARRANQUILLA	KINGSTON	30/10/14	E2	34
1388	GUAYAQUIL	BOGOTA	30/10/14	E1	18
1389	GUAYAQUIL	BOGOTA	30/10/14	E1	15
1390	MEXICO	CENTRAL AMERICA	30/10/14	E1	18
1391	PORT AU PRINCE	ST. DOMINGO	30/10/14	E2	45

LHD Sequence	FIR Suffering Risk	FIR Generating Risk	Date of the Event	GTE Code	Risk Value
1392	PORT AU PRINCE	MIAMI	31/10/14	E1	31
1394	ATLANTICO	MONTEVIDEO	31/10/14	E2	22
1395	BOGOTA	AMAZONICA	31/10/14	E2	22
1396	CENTRAL AMERICA	PANAMA	31/10/14	E2	39
1397	CENTRAL AMERICA	PANAMA	31/10/14	E2	39
1398	CENTRAL AMERICA	PANAMA	31/10/14	E2	22
1399	BARRANQUILLA	PANAMA	31/10/14	E1	18
1400	GUAYAQUIL	BOGOTA	31/10/14	E2	25
1402	BOGOTA	PANAMA	01/11/14	E1	31
1403	BARRANQUILLA	BOGOTA	01/11/14	E1	18
1404	LIMA	LA PAZ	01/11/14	F	23
1405	BARRANQUILLA	BOGOTA	01/11/14	E2	34
1406	MIAMI - (ST. DOMINGO)	ST. DOMINGO	01/11/14	E1	18
1407	GUAYAQUIL	CENTRAL AMERICA	02/11/14	F	26
1408	GUAYAQUIL	CENTRAL AMERICA	02/11/14	F	14
1410	GUAYAQUIL	BOGOTA	02/11/14	E2	20
1411	COMODORO RIVADAVIA	EZEIZA	02/11/14	E1	26
1412	BARRANQUILLA	PANAMA	02/11/14	E1	18
1413	LA PAZ	AMAZONICA	02/11/14	E1	23
1414	BARRANQUILLA	CURAZAO	03/11/14	E1	18
1415	CURAZAO	ST. DOMINGO	03/11/14	E1	20
1416	CURAZAO	MAIQUETIA	03/11/14	E2	29
1419	BOGOTA	GUAYAQUIL	04/11/14	E2	25
1420	BARRANQUILLA	PANAMA	04/11/14	E1	18
1422	GUAYAQUIL	CENTRAL AMERICA	05/11/14	E2	22
1423	GUAYAQUIL	LIMA	05/11/14	E1	18
1425	BOGOTA	PANAMA	05/11/14	E2	22
1426	GUAYAQUIL	CENTRAL AMERICA	05/11/14	E1	18
1427	AMAZONICA	LA PAZ	05/11/14	E2	17
1428	BARRANQUILLA	BOGOTA	05/11/14	E2	34
1429	BARRANQUILLA	PANAMA	05/11/14	E2	34
1430	BARRANQUILLA	BOGOTA	06/11/14	E1	18
1431	GUAYAQUIL	LIMA	06/11/14	E1	13
1432	COMODORO RIVADAVIA	EZEIZA	06/11/14	E1	26
1433	GUAYAQUIL	BOGOTA	06/11/14	E1	25
1434	BOGOTA	GUAYAQUIL	06/11/14	E1	35
1435	CURAZAO	ST. DOMINGO	07/11/14	E2	50
1436	BARRANQUILLA	BOGOTA	07/11/14	E1	18

LHD Sequence	FIR Suffering Risk	FIR Generating Risk	Date of the Event	GTE Code	Risk Value
1437	BARRANQUILLA	BOGOTA	07/11/14	E1	18
1438	BARRANQUILLA	KINGSTON	07/11/14	E2	39
1439	GUAYAQUIL	BOGOTA	08/11/14	E1	20
1440	GUAYAQUIL	BOGOTA	08/11/14	E1	13
1441	GUAYAQUIL	LIMA	08/11/14	E2	17
1442	BARRANQUILLA	BOGOTA	08/11/14	E1	18
1443	BARRANQUILLA	CURAZAO	08/11/14	E1	18
1444	GUAYAQUIL	LIMA	09/11/14	E1	20
1445	PANAMA	BOGOTA	09/11/14	E2	39
1447	CENTRAL AMERICA	PANAMA	09/11/14	E2	46
1449	ANTOFAGASTA	LIMA	09/11/14	E1	34
1450	HABANA	KINGSTON	09/11/14	E2	17
1451	LA PAZ	LIMA	10/11/14	E1	23
1452	MEXICO	CENTRAL AMERICA	10/11/14	E2	22
1453	MEXICO	CENTRAL AMERICA	10/11/14	E2	22
1454	GUAYAQUIL	LIMA	11/11/14	E2	25
1456	CENTRAL AMERICA - (GUAYAQUIL)	GUAYAQUIL	11/11/14	E2	22
1457	BARRANQUILLA	CURAZAO	11/11/14	E1	26
1458	BARRANQUILLA	PANAMA	11/11/14	E1	18
1459	ATLANTICO	MONTEVIDEO	11/11/14	E2	22
1460	GUAYAQUIL	BOGOTA	11/11/14	E2	20
1463	BOGOTA	PANAMA	12/11/14	E1	18
1464	BOGOTA	PANAMA	12/11/14	E1	18
1467	MEXICO	CENTRAL AMERICA	12/11/14	E1	18
1468	GUAYAQUIL	BOGOTA	12/11/14	E1	15
1472	BARRANQUILLA	MAIQUETIA	13/11/14	E1	18
1473	BARRANQUILLA	BOGOTA	13/11/14	E2	34
1474	MEXICO	CENTRAL AMERICA	13/11/14	E1	18
1475	BARRANQUILLA	CURAZAO	13/11/14	E2	34
1476	CURAZAO	ST. DOMINGO	13/11/14	E2	22
1478	BARRANQUILLA	MAIQUETIA	14/11/14	E1	18
1479	BARRANQUILLA	BOGOTA	14/11/14	E1	18
1480	GUAYAQUIL	LIMA	14/11/14	E1	13
1483	BARRANQUILLA	BOGOTA	15/11/14	E2	34
1484	CENTRAL AMERICA	MEXICO	15/11/14	E2	17
1485	CENTRAL AMERICA	MEXICO	15/11/14	E2	17
1486	CENTRAL AMERICA - (HABANA)	HABANA	15/11/14	E1	13
1487	COMODORO RIVADAVIA	MOUNT PLEASANT	15/11/14	E2	34
1488	BARRANQUILLA	BOGOTA	16/11/14	E2	34

LHD Sequence	FIR Suffering Risk	FIR Generating Risk	Date of the Event	GTE Code	Risk Value
1489	BOGOTA	PANAMA	16/11/14	E2	39
1490	AMAZONICA	MAIQUETIA	17/11/14	E1	18
1491	CENTRAL AMERICA	PANAMA	17/11/14	E1	13
1492	LA PAZ	AMAZONICA	17/11/14	E1	23
1493	MAIQUETIA	BARRANQUILLA	17/11/14	E2	17
1494	HABANA	PILOTO	17/11/14	M	11
1495	AMAZONICA	BOGOTA	18/11/14	E1	13
1496	AMAZONICA	PARAMARIBO	18/11/14	E2	17
1497	MAIQUETIA	BARRANQUILLA	18/11/14	E1	13
1498	BARRANQUILLA	MAIQUETIA	18/11/14	E1	18
1499	LIMA	AMAZONICA	18/11/14	E2	22
1500	MAIQUETIA	BARRANQUILLA	18/11/14	E1	13
1501	ATLANTICO	MONTEVIDEO	18/11/14	E2	22
1502	MAIQUETIA	BARRANQUILLA	18/11/14	E2	17
1505	CURAZAO	ST. DOMINGO	19/11/14	E2	22
1506	PORT AU PRINCE	ST. DOMINGO	19/11/14	E1	31
1507	LA PAZ	CORDOBA	20/11/14	E1	23
1508	ATLANTICO	ABIDJAN	20/11/14	E2	24
1509	ATLANTICO	MONTEVIDEO	20/11/14	E2	22
1510	BARRANQUILLA	BOGOTA	20/11/14	E1	18
1511	BARRANQUILLA	BOGOTA	20/11/14	E1	18
1512	LIMA	ANTOFAGASTA	21/11/14	E1	26
1514	BARRANQUILLA	PANAMA	21/11/14	E1	18
1515	LA PAZ	AMAZONICA	21/11/14	E1	39
1516	CORDOBA	LA PAZ	22/11/14	E2	39
1517	BARRANQUILLA	PANAMA	22/11/14	E1	18
1518	LIMA	AMAZONICA	22/11/14	E1	18
1519	CURAZAO	ST. DOMINGO	22/11/14	E1	20
1520	BARRANQUILLA	BOGOTA	23/11/14	E1	18
1522	BOGOTA	PANAMA	24/11/14	E1	31
1523	BOGOTA	PANAMA	24/11/14	E2	39
1524	BARRANQUILLA	PANAMA	24/11/14	E1	18
1525	BARRANQUILLA	BOGOTA	25/11/14	E2	34
1526	GUAYAQUIL	CENTRAL AMERICA	25/11/14	E2	22
1527	GUAYAQUIL	CENTRAL AMERICA	25/11/14	E2	22
1529	BOGOTA	GUAYAQUIL	25/11/14	E1	31
1530	LIMA - (GUAYAQUIL)	GUAYAQUIL	25/11/14	E2	25
1532	BOGOTA	PANAMA	26/11/14	E1	31

LHD Sequence	FIR Suffering Risk	FIR Generating Risk	Date of the Event	GTE Code	Risk Value
1534	CORDOBA	MENDOZA	26/11/14	E2	22
1535	BARRANQUILLA	MAIQUETIA	26/11/14	E1	18
1536	BARRANQUILLA	CURAZAO	26/11/14	E1	18
1537	GUAYAQUIL - (LIMA)	LIMA	27/11/14	E1	18
1538	ANTOFAGASTA	PILOTO	27/11/14	B	9
1540	BARRANQUILLA	PANAMA	28/11/14	E1	18
1541	RESISTENCIA	CURITIBA	28/11/14	E2	34
1544	PORT AU PRINCE	ST. DOMINGO	28/11/14	E1	31
1545	BARRANQUILLA	PANAMA	28/11/14	E2	34
1547	BARRANQUILLA	PANAMA	28/11/14	E2	34
1548	BARRANQUILLA	KINGSTON	28/11/14	E1	23
1549	CURAZAO	KINGSTON	28/11/14	E2	46
1550	PARAMARIBO - (GEORGETOWN)	GEORGETOWN	29/11/14	E1	34
1551	GUAYAQUIL	CENTRAL AMERICA	30/11/14	E1	18
1552	GUAYAQUIL	CENTRAL AMERICA	30/11/14	E1	23
1553	ATLANTICO	LUANDA	30/11/14	E2	22
1554	BRASILIA	PILOTO	30/11/14	J	20
1555	BARRANQUILLA	PANAMA	01/12/14	E2	34
1556	BARRANQUILLA	MAIQUETIA	01/12/14	E1	18
1557	BARRANQUILLA	PANAMA	01/12/14	E1	26
1558	BARRANQUILLA	MAIQUETIA	01/12/14	E1	18
1559	BARRANQUILLA	CURAZAO	01/12/14	E1	18
1560	BARRANQUILLA	MAIQUETIA	02/12/14	E1	18
1561	GUAYAQUIL	BOGOTA	02/12/14	E1	18
1562	GUAYAQUIL	BOGOTA	02/12/14	E2	25
1563	AMAZONICA	CAYENNE	02/12/14	E1	13
1566	BARRANQUILLA	PANAMA	03/12/14	E1	18
1567	CENTRAL AMERICA	MEXICO	04/12/14	E2	22
1568	BRASILIA	PILOTO	04/12/14	A	18
1569	LA PAZ	AMAZONICA	05/12/14	E1	23
1571	CORDOBA	LA PAZ	05/12/14	E1	18
1572	BARRANQUILLA	PANAMA	05/12/14	E1	18
1575	CURITIBA	PILOTO	05/12/14	I	14
1576	PORT AU PRINCE	CURAZAO	06/12/14	E2	39
1577	AMAZONICA	BOGOTA	06/12/14	E2	17
1578	LA PAZ	AMAZONICA	06/12/14	E1	23
1579	BARRANQUILLA	PANAMA	06/12/14	E1	18
1580	CORDOBA	LA PAZ	06/12/14	E2	34
1581	CORDOBA	LA PAZ	06/12/14	E2	34

LHD Sequence	FIR Suffering Risk	FIR Generating Risk	Date of the Event	GTE Code	Risk Value
1582	CORDOBA	MENDOZA	06/12/14	E1	13
1584	GUAYAQUIL	CENTRAL AMERICA	07/12/14	E1	23
1585	GUAYAQUIL	BOGOTA	07/12/14	E1	20
1586	BARRANQUILLA	PANAMA	07/12/14	E1	18
1587	GUAYAQUIL	CENTRAL AMERICA	07/12/14	E1	18
1589	BARRANQUILLA	BOGOTA	08/12/14	E1	18
1590	GUAYAQUIL	LIMA	08/12/14	E1	18
1591	ANTOFAGASTA	CORDOBA	08/12/14	E1	13
1592	RESISTENCIA	EZEIZA	08/12/14	E1	36
1593	MENDOZA	EZEIZA	08/12/14	E1	13
1594	MENDOZA	EZEIZA	08/12/14	E1	13
1595	BOGOTA	GUAYAQUIL	09/12/14	E1	35
1596	ATLANTICO	ABIDJAN	09/12/14	E2	22
1597	ATLANTICO	LUANDA	09/12/14	E2	22
1598	ATLANTICO	MONTEVIDEO	09/12/14	E2	39
1599	HABANA	CENTRAL AMERICA	09/12/14	E2	17
1601	GUAYAQUIL	LIMA	09/12/14	E2	17
1602	GUAYAQUIL	CENTRAL AMERICA	10/12/14	E1	18
1603	BARRANQUILLA	BOGOTA	10/12/14	E2	34
1604	ANTOFAGASTA	LIMA	10/12/14	E1	34
1606	AMAZONICA	MAIQUETIA	10/12/14	E1	13
1607	CORDOBA	LA PAZ	11/12/14	E1	18
1608	AMAZONICA	BRASILIA	11/12/14	E2	17
1609	AMAZONICA	BRASILIA	11/12/14	E2	17
1610	KINGSTON	PANAMA	11/12/14	E1	18
1611	CORDOBA	LA PAZ	11/12/14	E2	34
1612	ATLANTICO	LUANDA	11/12/14	E2	22
1613	CURAZAO	ST. DOMINGO	12/12/14	E1	18
1614	PORT AU PRINCE	KINGSTON	12/12/14	E2	39
1615	GUAYAQUIL	BOGOTA	12/12/14	E1	18
1616	MENDOZA	CORDOBA	12/12/14	E2	17
1618	ATLANTICO	AMAZONICA	13/12/14	E2	39
1620	MONTEVIDEO	CURITIBA	13/12/14	F	14
1621	CURAZAO	ST. DOMINGO	13/12/14	E1	18
1622	CURAZAO	BARRANQUILLA	13/12/14	E1	18
1624	BOGOTA	GUAYAQUIL	14/12/14	E2	45
1625	ATLANTICO	LUANDA	14/12/14	E2	27
1626	CENTRAL AMERICA	BOGOTA	14/12/14	E2	51

LHD Sequence	FIR Suffering Risk	FIR Generating Risk	Date of the Event	GTE Code	Risk Value
1627	BARRANQUILLA	PANAMA	14/12/14	E2	34
1628	BARRANQUILLA	PANAMA	14/12/14	E2	34
1630	HABANA	PILOTO	14/12/14	M	6
1631	BARRANQUILLA	BOGOTA	14/12/14	E1	18
1632	CURAZAO	ST. DOMINGO	15/12/14	E1	18
1633	CURAZAO	ST. DOMINGO	15/12/14	E1	18
1634	BARRANQUILLA	MAIQUETIA	15/12/14	E2	34
1635	LA PAZ	ASUNCION	15/12/14	E1	23
1636	BARRANQUILLA	BOGOTA	15/12/14	E1	18
1637	BARRANQUILLA	BOGOTA	16/12/14	E2	34
1638	ATLANTICO	LUANDA	16/12/14	E2	22
1639	LIMA	ANTOFAGASTA	16/12/14	E2	22
1641	BARRANQUILLA	BOGOTA	16/12/14	E1	18
1643	STA. MARIA - (PIARCO)	PIARCO	16/12/14	E1	31
1644	GUAYAQUIL	BOGOTA	16/12/14	E2	25
1645	LA PAZ	AMAZONICA	17/12/14	E2	27
1646	CENTRAL AMERICA	MEXICO	17/12/14	E2	39
1647	BOGOTA	PANAMA	17/12/14	E1	31
1648	GUAYAQUIL	BOGOTA	17/12/14	E1	20
1649	PIARCO	SAN JUAN	17/12/14	E1	18
1650	KINGSTON	PANAMA	17/12/14	E1	18
1651	CURAZAO	PORT AU PRINCE	17/12/14	E1	18
1652	BARRANQUILLA	CURAZAO	17/12/14	E2	34
1653	CENTRAL AMERICA - (MEXICO)	MEXICO	18/12/14	E2	39
1654	LA PAZ	CORDOBA	18/12/14	E2	27
1655	BOGOTA	PANAMA	18/12/14	E1	18
1657	GUAYAQUIL	BOGOTA	18/12/14	E1	20
1658	GUAYAQUIL	CENTRAL AMERICA	19/12/14	E1	18
1659	SAN JUAN - (PIARCO)	PIARCO	19/12/14	E1	18
1661	HABANA - (CENTRAL AMERICA)	CENTRAL AMERICA	19/12/14	E2	22
1662	PORT AU PRINCE	ST. DOMINGO	20/12/14	E2	45
1663	GUAYAQUIL	BOGOTA	20/12/14	E2	22
1664	MAIQUETIA	PIARCO	20/12/14	E2	34
1665	LA PAZ	AMAZONICA	20/12/14	E1	39
1666	MENDOZA	EZEIZA	21/12/14	E1	18
1667	LA PAZ	AMAZONICA	21/12/14	E1	31
1668	AMAZONICA	AERONAVE	21/12/14	H	17
1670	MENDOZA	SANTIAGO	21/12/14	E2	39
1671	MENDOZA	EZEIZA	21/12/14	E1	18

LHD Sequence	FIR Suffering Risk	FIR Generating Risk	Date of the Event	GTE Code	Risk Value
1673	BOGOTA	PANAMA	22/12/14	E2	39
1674	ASUNCION	LA PAZ	22/12/14	E2	34
1675	GUAYAQUIL	BOGOTA	22/12/14	E1	18
1676	PORT AU PRINCE	CURAZAO	22/12/14	E1	31
1677	ST. DOMINGO - (CURAZAO)	CURAZAO	22/12/14	E1	13
1678	BARRANQUILLA	PANAMA	22/12/14	E1	18
1679	GUAYAQUIL	BOGOTA	23/12/14	E1	20
1680	GUAYAQUIL	BOGOTA	23/12/14	F	30
1681	GUAYAQUIL	BOGOTA	23/12/14	F	30
1682	GUAYAQUIL	LIMA	23/12/14	E1	20
1684	MEXICO - (CENTRAL AMERICA)	CENTRAL AMERICA	23/12/14	E2	22
1685	BOGOTA	GUAYAQUIL	23/12/14	E2	22
1686	GUAYAQUIL	BOGOTA	24/12/14	E1	20
1687	CURAZAO	BARRANQUILLA	24/12/14	E2	22
1688	GUAYAQUIL	LIMA	24/12/14	E1	18
1689	ATLANTICO	ABIDJAN	24/12/14	E2	39
1690	GUAYAQUIL	BOGOTA	24/12/14	E1	15
1691	GUAYAQUIL	BOGOTA	25/12/14	E1	15
1693	PORT AU PRINCE	ST. DOMINGO	26/12/14	E1	31
1695	ATLANTICO	ABIDJAN	27/12/14	E2	22
1696	AMAZONICA	MAIQUETIA	27/12/14	E1	13
1697	CURAZAO	BARRANQUILLA	28/12/14	E1	18
1698	GUAYAQUIL - (CENTRAL AMERICA)	CENTRAL AMERICA	29/12/14	E2	39
1700	MENDOZA	EZEIZA	29/12/14	E1	26
1701	PORT AU PRINCE	ST. DOMINGO	29/12/14	E1	35
1702	CURAZAO	ST. DOMINGO	29/12/14	E1	18
1703	GUAYAQUIL	BOGOTA	29/12/14	E1	18
1704	CURITIBA	MONTEVIDEO	30/12/14	E2	22
1705	PANAMA	BOGOTA	30/12/14	E1	18
1706	BARRANQUILLA	KINGSTON	30/12/14	E1	23
1707	CURAZAO	ST. DOMINGO	30/12/14	E1	20
1708	PORT AU PRINCE	ST. DOMINGO	30/12/14	E2	45
1709	PANAMA	BOGOTA	31/12/14	E1	18
1710	GUAYAQUIL	BOGOTA	31/12/14	E1	15
1711	GUAYAQUIL	LIMA	31/12/14	E1	13
1712	PANAMA	BOGOTA	31/12/14	E2	22