



Thirteenth CAR/SAM Regional Bird/Wildlife Hazard Prevention Committee Meeting and Conference

# **SAFETY MANAGEMENT IN THE ENVIRONMENT AND FAUNA: ACI-LAC's Perspective**

Javier Martínez, Director General ACI-LAC

# ACI's Mission



ACI promotes the interests of the world's airports and the communities they serve, and promotes professional excellence in airport management and operations.



# The Voice of Latin America & Caribbean Airports

Serving the Airport  
Community:

- Advocacy
- Education
- Publications
- Handbooks
- Technical Committees
- Initiatives

**ACI Latin America -  
Caribbean**

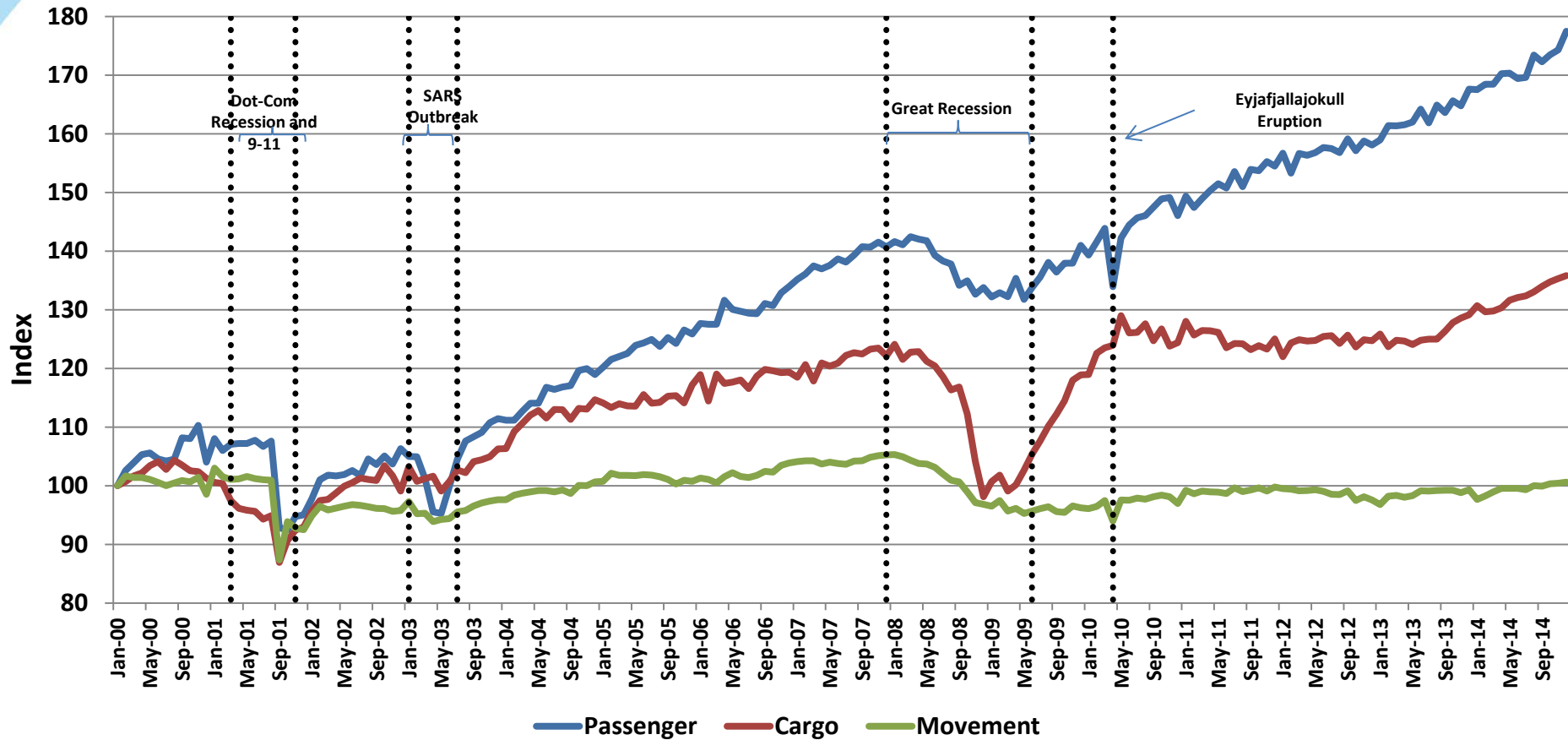
PANAMA CITY  
PANAMA

[www.aci-lac.aero](http://www.aci-lac.aero)



**Promoting the  
Excellence in  
Airport Management**

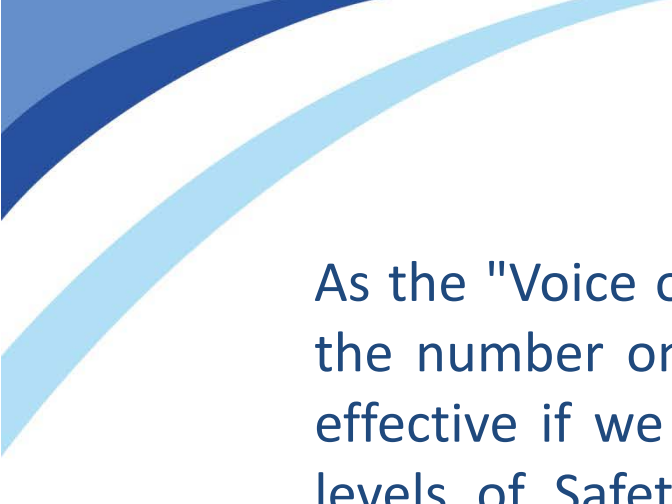
# Total worldwide movements, passenger and cargo evolution (2000-2014)





**Our commitment with**

**SAFETY**



As the "Voice of the Airports", our credibility and leadership in the number one priority of the aviation industry, will only be effective if we support our members to operate with optimal levels of Safety, and by focusing on activities that promote Safety on airport operators.

### **LAC Safety Committee Priorities:**

- Safety Management System (SMS) implementation
- **Wildlife Hazard Management**
- Aerodrome Certification
- Safety Handbook Publications
- Safety training



- A Safety Review is the process of carrying out an on-site safety assessment.
- The Peer Review helps airports identify and mitigate safety vulnerabilities and enhance compliance ..
- Peer review team consists of Safety Partner Airports (between 5 – 8 Safety Experts), ICAO Regional Office representatives and ACI staff experts.

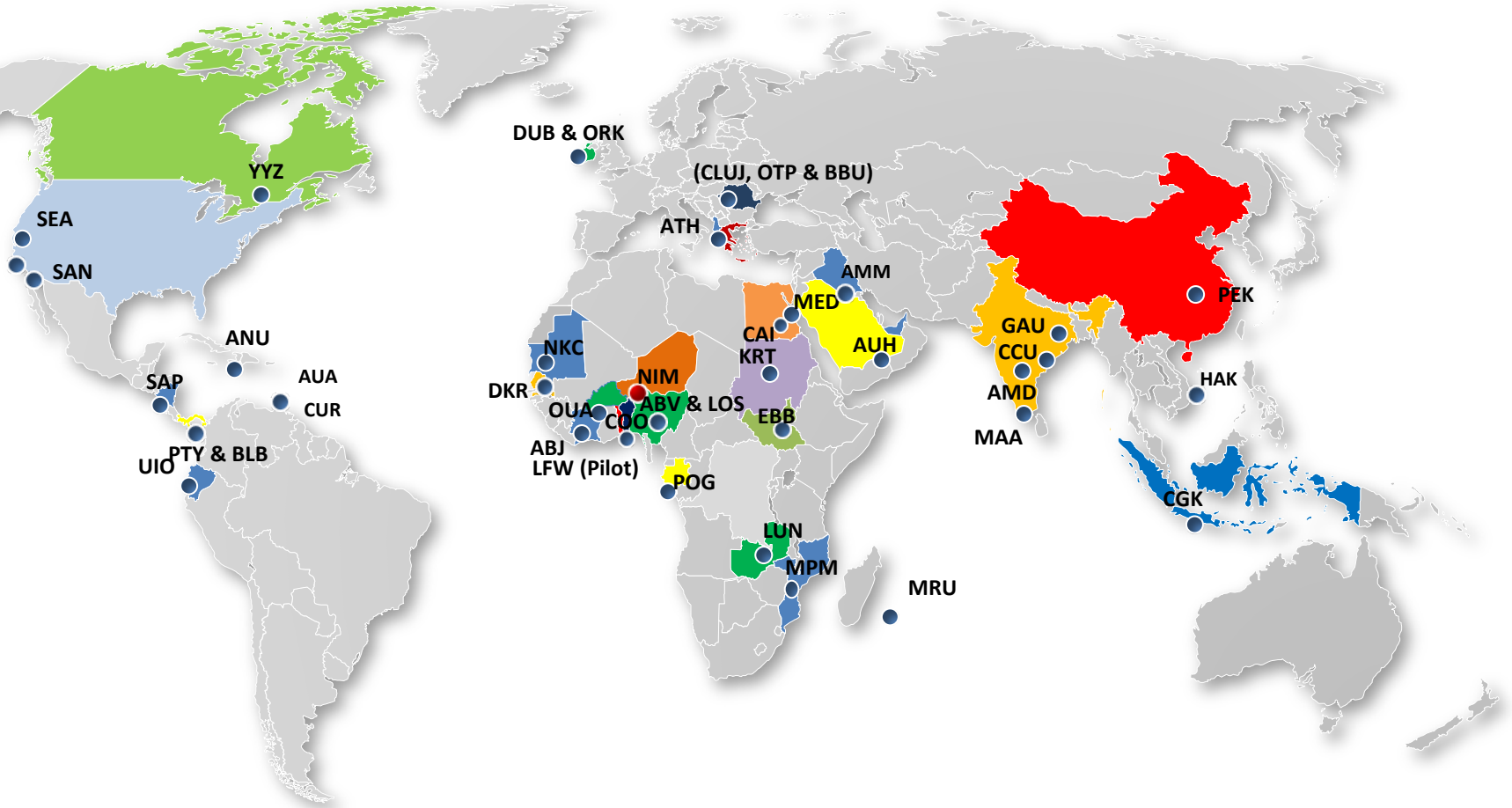




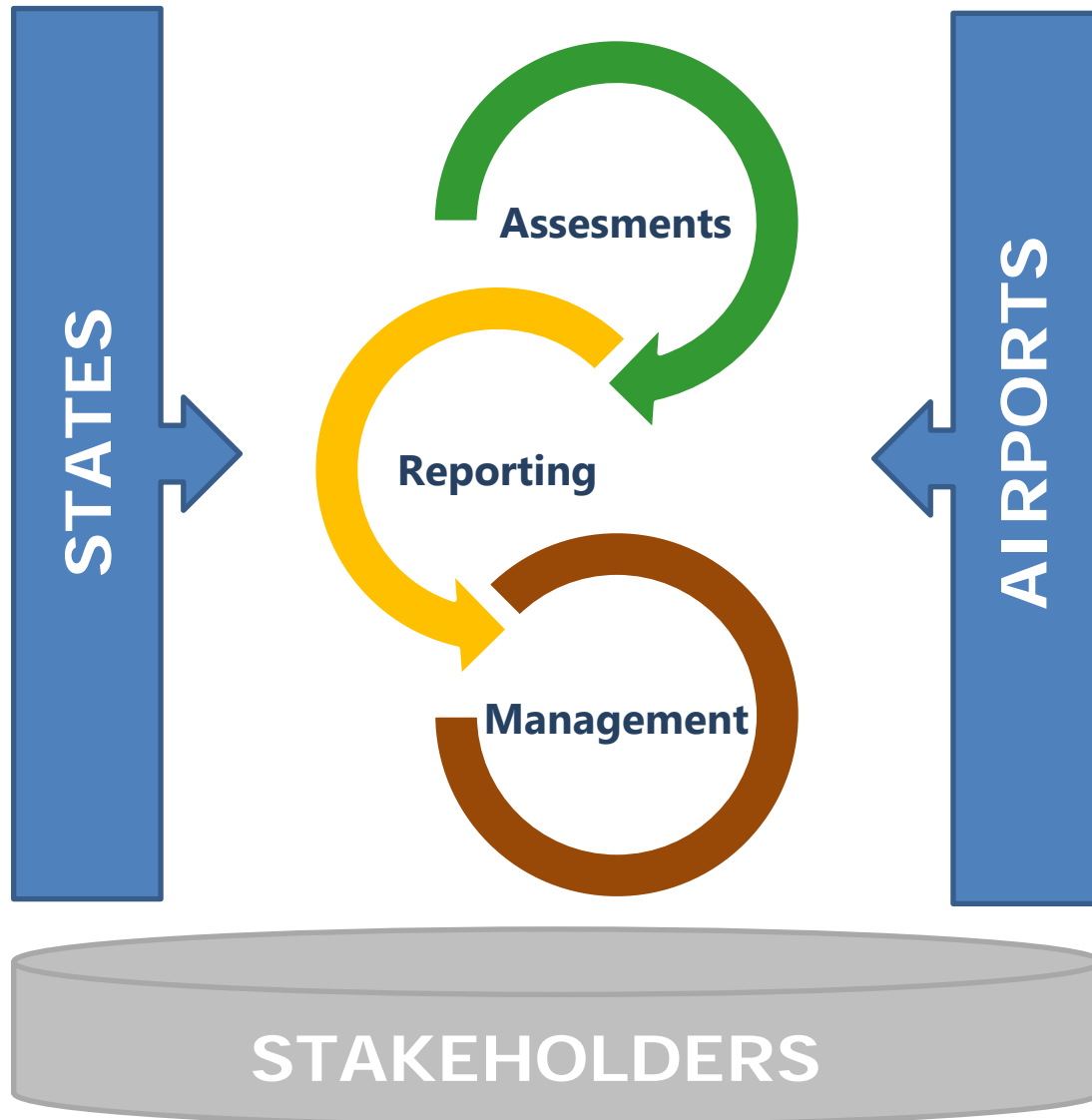
## Safety Expertise Includes:

- Runway Safety
- Safety Management Systems (SMS)
- Aerodrome Certification
- **Wildlife Hazard Management**
- Markings, Signs and Lighting
- Rescue and Firefighting
- Emergency Response
- Airside Driver and Vehicle Management
- Management of Ground Handlers
- Contractual and Legal Issues
- Improvement of AIP Documentation
- Low Visibility Procedure
- Obstacle Management
- Winter Operations
- FOD Management
- Movement Area Maintenance
- Movement Area Access
- Aerodrome Works Safety
- Apron Safety Management
- Removal of Disabled Aircraft
- Hazardous Material Handling

# APEX reviews 2011-2015



# Wildlife Hazard Management: ACI's Approach



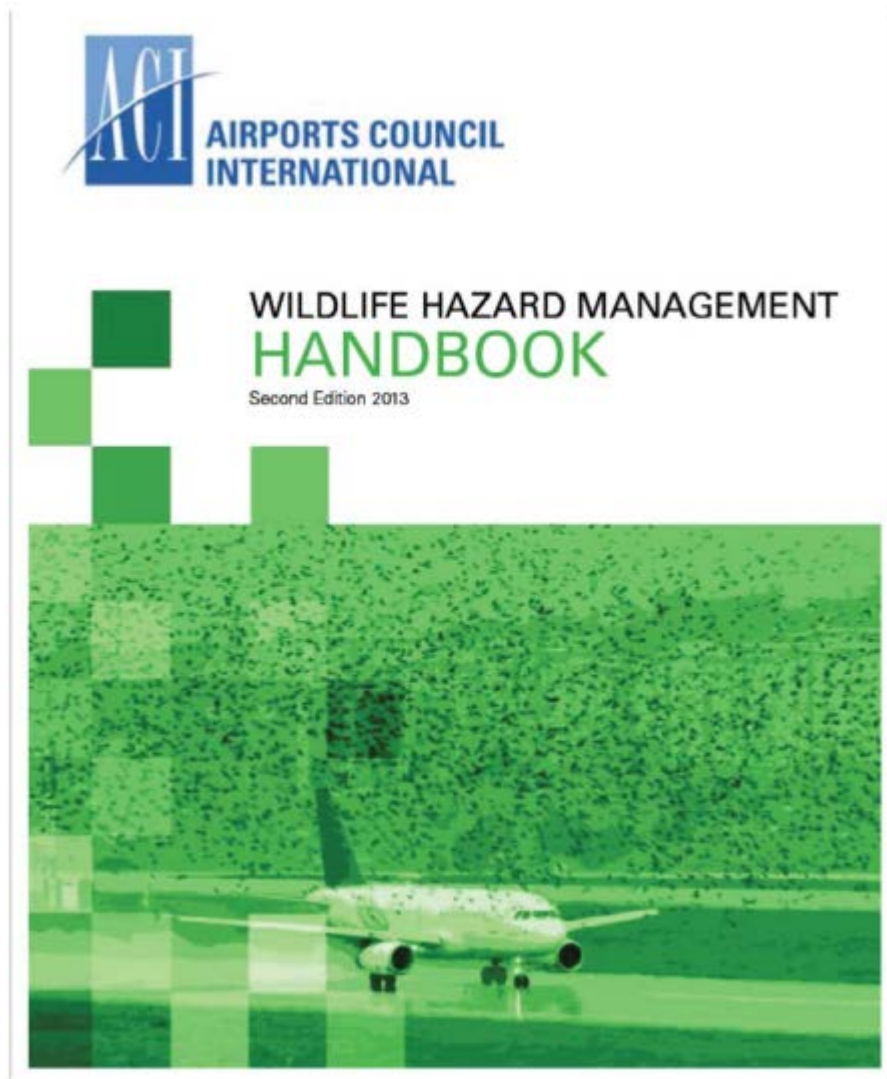
# Wildlife Hazard Management Programme (WHMP)

Each aerodrome **have its own unique hazards to manage**, and no two aerodromes will experience wildlife hazards in exactly the same way.

Given the unique nature of wildlife hazard management, it is critical for each aerodrome to **develop its own Wildlife Hazard Management Plan (WHMP)**.

Operators should have a process to review and evaluate the WHMP to provide safety assurance that the plan is fully effective and correctly implemented

# ACI Wildlife Hazard Management Handbook



- Wildlife Management
- Roles and Responsibilities
- Risk Assessment of Wildlife Hazard and the Wildlife Hazard Management Plan (WHMP)
- Operational Practices
- Training
- Evaluation of WHMP

## Annexes:

- A. Habitat Management
- B. Wildlife Interventions
- C. Wildlife Strike Statistics
- D. Wildlife Strike Report Form

# ACI Wildlife Hazard Management Handbook

Assist to manage Wildlife Hazards around the aerodrome by:

- Describing the responsibilities
- Guidelines for conducting a Risk Assessment
- Creation of a WHMP
- Operational practices for Wildlife Hazard Management
- Training
- How to evaluate the efficacy of the Plan.

Wildlife Hazard Management is clearly of great importance to Aerodrome Operators, who want to **avoid or mitigate all foreseeable risks of accidents occurring from wildlife strikes.**

# ACI Wildlife Hazard Management Handbook

Following a Risk Assessment, aerodrome operators must develop a **Wildlife Hazard Management Plan (WHMP)**.

WHMP sets out the actions required to:

- Reduce wildlife hazards in and around critical aircraft operating areas.
- Decrease the risk of a strike.

WHMP should include an evaluation system to assess the success of the WHMP and its actions.

## A WHMP depends on accurate and reliable data

Accurate  
and reliable  
data

Collecting

Requirement  
for all relevant  
third parties

Reporting

Wildlife log  
with detail info  
and taken  
actions

Recording

# Wildlife Risk Assessment

			Severity of Strikes				
			Catastrophic	Critical	Moderate	Minor	Negligible
Probability of Strikes			A/C Crash & Severe	A/C Crash & Light Casualty	A/C Severe Damage & No Crash	A/C light Damage	near miss
Definition	Meaning	Value	A	B	C	D	E
Frequent	5/10,000 movements	5	5A(Unacceptable)	5B(Unacceptable)	5C(Unacceptable)	5D(High)	5E(Moderate)
likely	4/10,000 movements	4	4A(Unacceptable)	4B(Unacceptable)	4C(Unacceptable)	4D(Moderate)	4E(Moderate)
Occasional	3/10,000 movements	3	3A(Unacceptable)	3B(High)	3C(High)	3D(Moderate)	3E(low)
Seldom	2/10,000 movements	2	2A(Unacceptable)	2B(High)	2C(Moderate)	2D(Low)	2E(Very Low)
Improbable	1/10,000 movements	1	1A(Unacceptable)	1B(High)	1C(Low)	1D(Very Low)	1E(Very Low)

# Collaboration is a Key Component





# The Way FORWARD

- Stress the importance of the Wildlife Hazard Management among our members.
- Work in collaboration with all airport stakeholders
- To reinforce the training offer in Wildlife Hazard Management



The  
**voice** of the  
world's  
**airports**