



Agenda Item 2: Air Traffic Management (ATM)

Air traffic statistics of the EUR-SAM Corridor during 2013 and air traffic evolution since 2004

(Presented by SATMA)

SUMMARY

This information paper presents to SAT States global and detailed information about the air traffic statistics of the EUR-SAM Corridor during year 2013 as well as the evolution of these figures since 2004.

1. INTRODUCTION

One important task of the SATMA is the collection and elaboration of the statistical data of the air traffic movements along the EUR-SAM Corridor. The importance of this data as well as its evolution during the past years has been strongly highlighted in previous SAT Meetings as an important base to take preventive actions in line with the evolution of these figures.

Once presented in SAT/19 Meeting, this statistical data of the EUR-SAM Corridor will be available on SATMA web page: www.satmasat.com.

2. DISCUSSION

During previous two years of 2013, the global figures of the EUR-SAM Corridor showed a relevant an important increase related to the global crisis started on 2009: 11% and 10% respectively to 2011 and 2012. However, the upward trend has not been consolidated during 2013 where has been registered a huge decrease of 7% annual average. This figure shows that globally the Corridor is at similar level than during 2009 or inclusive 2010 with the same average traffic per day.

In this line, the preliminary figures registered at the beginning of 2014 consolidate and emphasizes the drop trend of 2013.

The use of the ATS routes remains with the same trend detected after the implementation of the two unidirectional routes. In this way, the use of both UN741 (16%) and the use of UN866 (22%) are gradually decreasing. In fact, UN866 has showed a clear increase since the implementation of the unidirectional two route system, underused route in 2006 with 14% of the traffic until 22% of the traffic during 2013. Nevertheless, during 2013 showed the lowest figure from 2006.

UN873, managing the 47% of the total traffic of the Corridor is the most demanded route. This bidirectional route needs special attention to its evolution. The use of the other bidirectional route, UN857 (13%) has decreased respected 2011, being its average of use still moderated.

The use of the RANDOM route, 1%, shows a steady decrease.

3. ACTION BY THE MEETING

The SAT/19 Meeting is invited:

- To analyse and discuss the conclusions of this WP and ANNEX I.
- To determine if other air traffic statistics studies are needed to assess the evolution in the corridor.

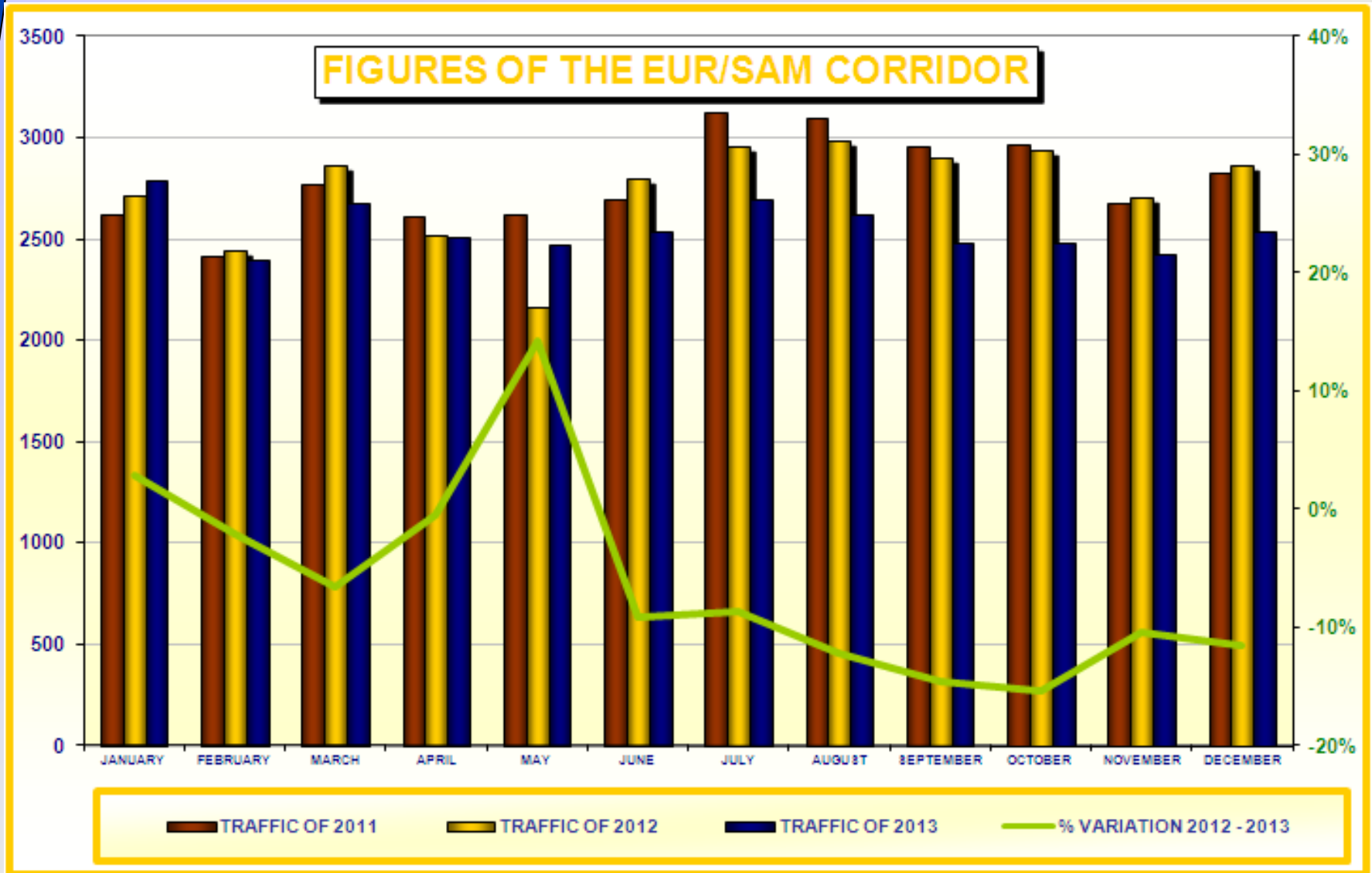
***AIR TRAFFIC STATISTICS OF THE
EUR/SAM CORRIDOR
2013***

DATA COLLECTION

- **THE NECESSARY FLIGHT PLAN INFORMATION TO PERFORM THIS STUDY IS OBTAINED FROM PALESTRA (AENA'S DATA BASE):**
 - **THIS FLIGHT PLAN DATA CONTAINS INITIAL FLIGHT PLAN INFORMATION THAT IS UPDATED BY RADAR AND CONTROLLERS WITH PILOT POSITION REPORTS.**
 - **THE AIR TRAFFIC MOVEMENTS REFLECTED IN THIS STUDY ARE:**
 - **ALL AIRCRAFTS USING UN741, UN866, UN873 AND UN857 WHOSE FLIGHT PLANS CONTAINS INFORMATION ABOUT EDUMO, TENPA, IPERA AND GUNET FIX POINTS.**
 - **AIRCRAFT USING THE RANDOM ROUTE.**
 - **THIS STUDY DOES NOT REFLECT:**
 - **TRAFFIC NOT OVERFLYING CANARIES FIR/UIR.**
 - **DATA FROM EAST-WEST FLOWS CROSSING THE EUR-SAM CORRIDOR.**
 - **SOUTHBOUND TRAFFIC TO/ FROM CAPE VERDE.**

GLOBAL FIGURES OF THE EUR/SAM CORRIDOR

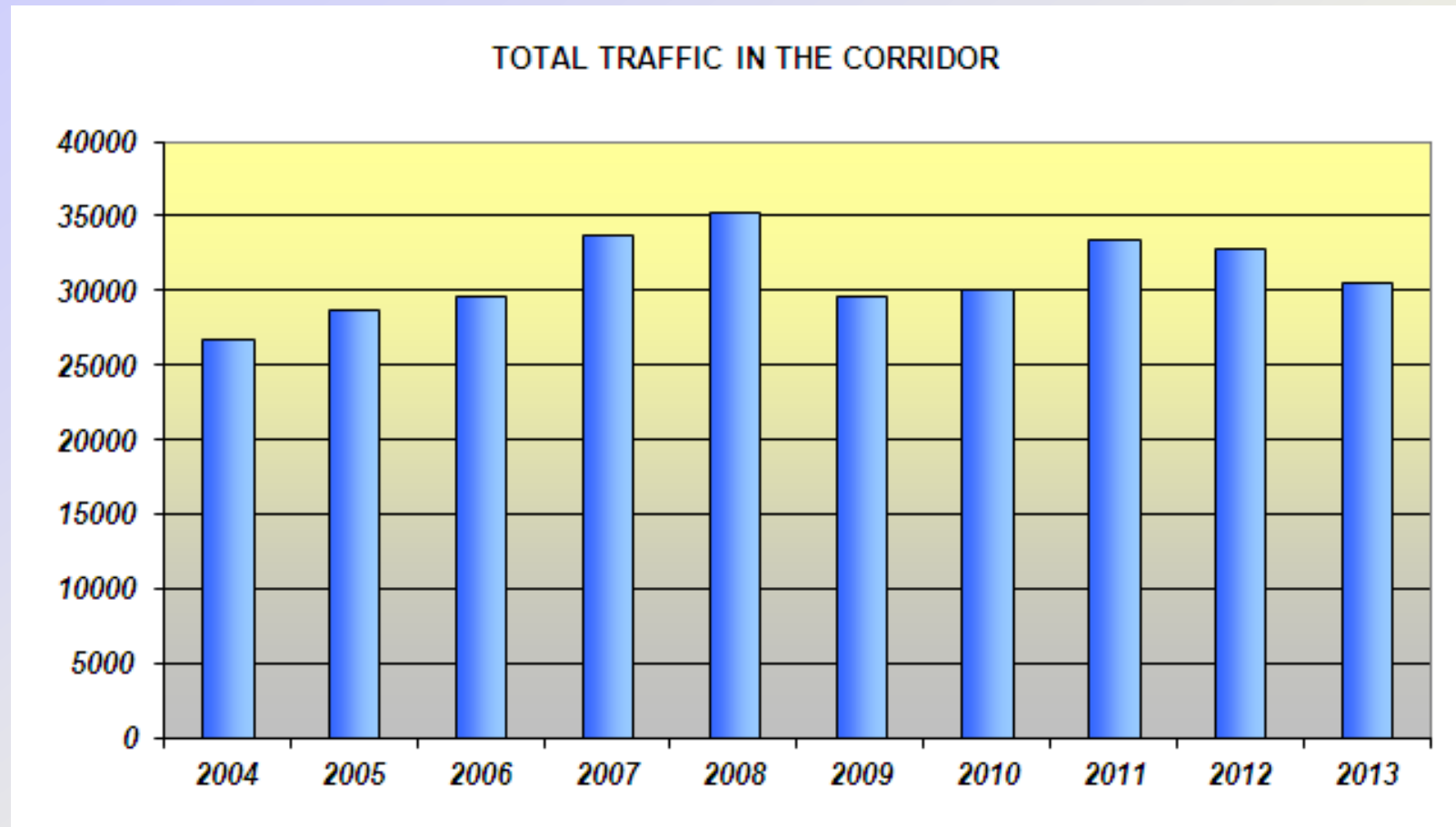
MONTH	SOUTHBOUND		NORTHBOUND		TOTAL TRAFFIC IN THE CORRIDOR						% VARIATION	
	2012	2013	2012	2013	2011	DAILY	2012	DAILY	2013	DAILY	2011 - 2012	2012 - 2013
JANUARY	1163	1347	1551	1447	2624	85	2714	88	2794	90	3%	3%
FEBRUARY	1061	1107	1385	1289	2421	86	2446	84	2396	86	1%	-2%
MARCH	1337	1290	1532	1393	2768	89	2869	93	2683	87	4%	-6%
APRIL	1038	1248	1486	1264	2613	87	2524	84	2512	84	-3%	0%
MAY	1027	1110	1140	1365	2627	85	2167	83	2475	80	-18%	14%
JUNE	1333	1225	1463	1314	2699	90	2796	93	2539	85	4%	-9%
JULY	1386	1283	1569	1417	3126	101	2955	95	2700	87	-5%	-9%
AUGUST	1410	1319	1576	1304	3101	100	2986	96	2623	85	-4%	-12%
SEPTEMBER	1410	1178	1494	1303	2961	99	2904	97	2481	83	-2%	-15%
OCTOBER	1452	1252	1485	1232	2967	96	2937	95	2484	80	-1%	-15%
NOVEMBER	1201	1167	1503	1255	2677	89	2704	90	2422	81	1%	-10%
DECEMBER	1427	1252	1440	1284	2830	91	2867	92	2536	82	1%	-12%
AVERAGE	1270	1232	1469	1322	2785	92	2739	91	2554	84	-2%	-6%



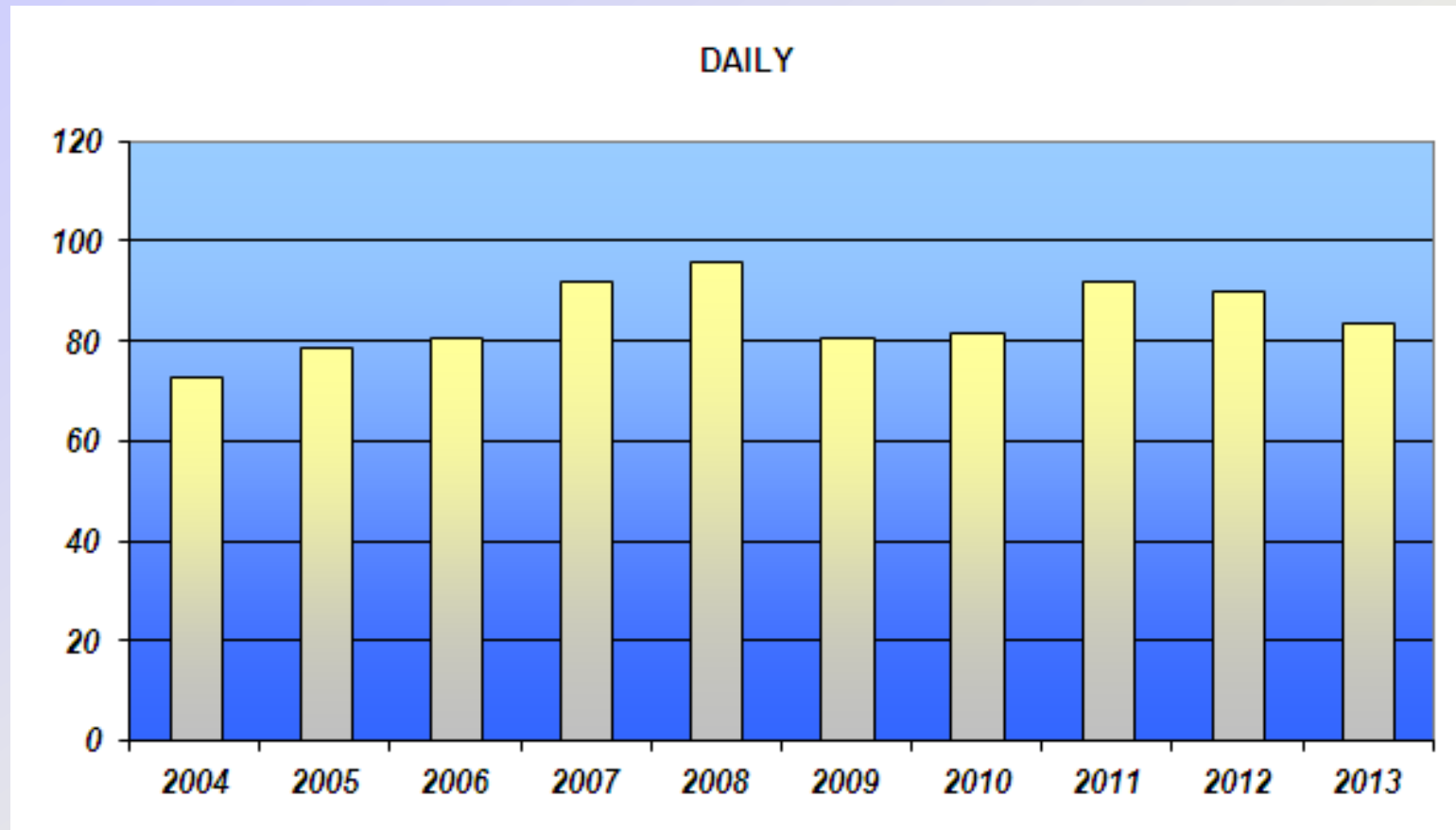
NUMBER OF MOVEMENTS

FIGURES OF	SOUTHBOUND	NORTHBOUND	TOTAL TRAFFIC IN THE CORRIDOR	MONTHLY	DAILY
2004	13108	13685	26793	2233	73
2005	14088	14674	28762	2397	79
2006	14651	15036	29687	2474	81
2007	16704	17004	33708	2809	92
2008	17024	18295	35319	2943	96
2009	14256	15366	29622	2468	81
2010	14083	16019	30102	2508	82
2011	15426	17988	33414	2784	92
2012	15245	17624	32869	2739	90
2013	14778	15867	30645	2554	84

NUMBER OF MOVEMENTS

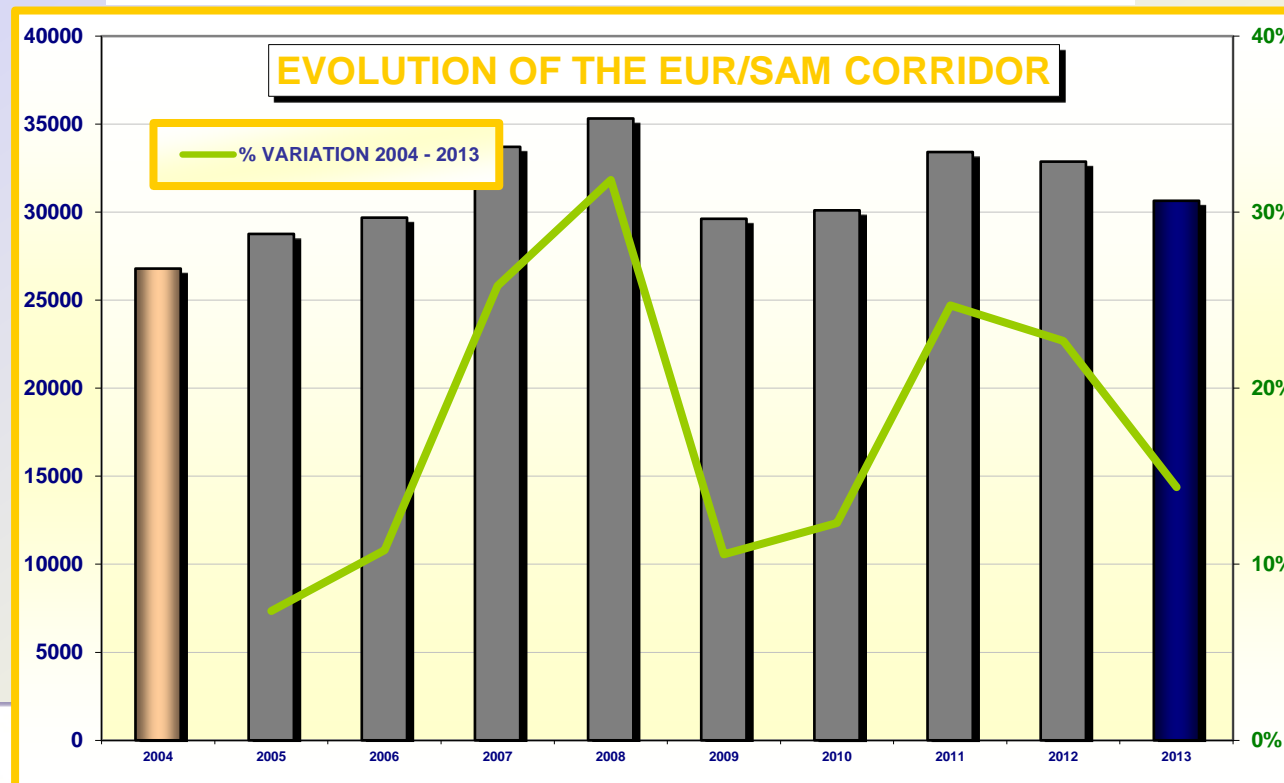


AVERAGE OF DAILY TRAFFIC



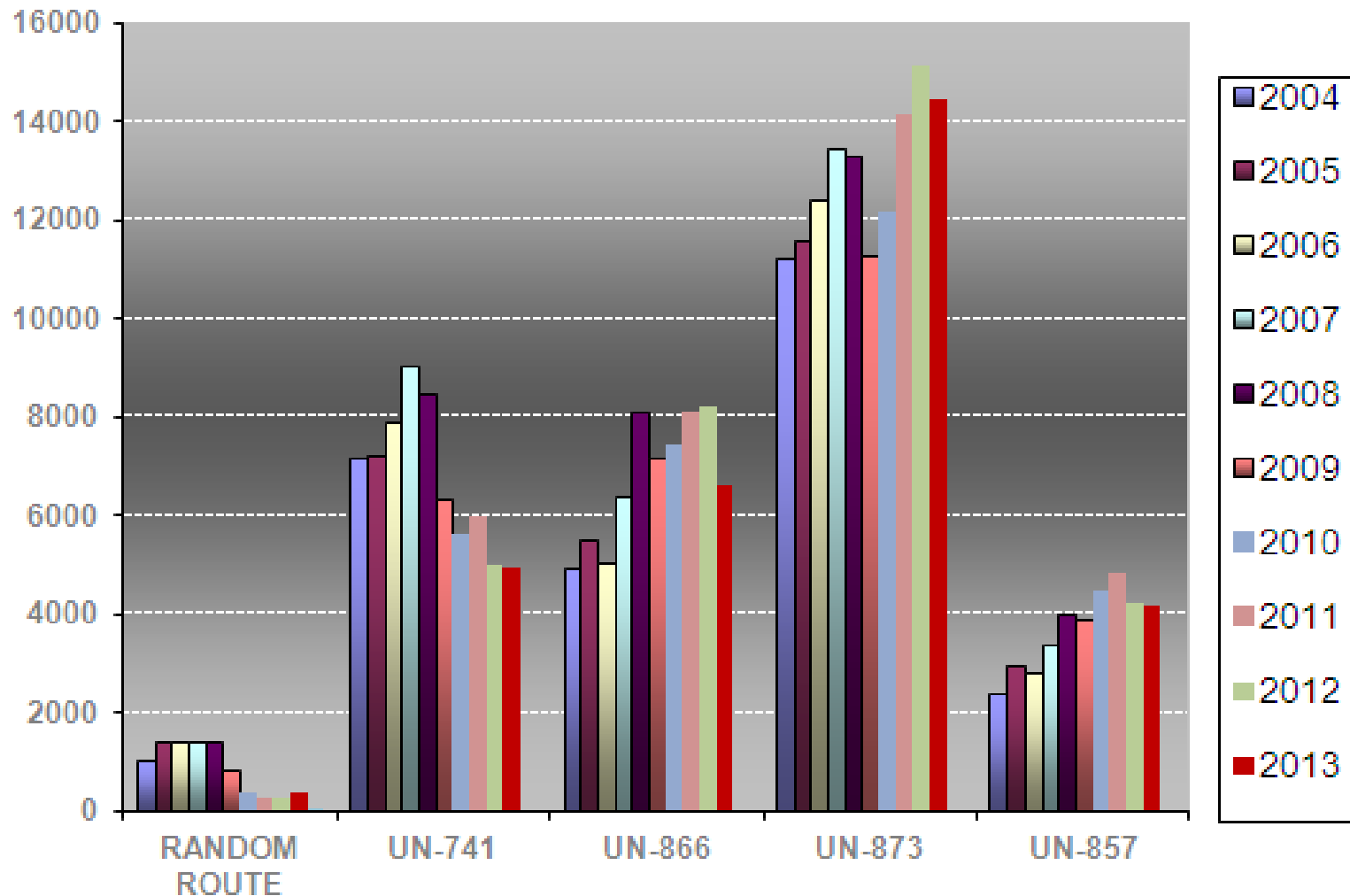
EVOLUTION OF THE EUR/SAM CORRIDOR

FIGURES OF	SOUTHBOUND	NORTHBOUND	TOTAL TRAFFIC IN THE CORRIDOR	% INCREASE FROM 2004
2004	13108	13685	26793	-
2005	14088	14674	28762	7.3%
2006	14651	15036	29687	10.8%
2007	16704	17004	33708	25.8%
2008	17024	18295	35319	31.82%
2009	14256	15366	29622	10.56%
2010	14083	16019	30102	12.35%
2011	15426	17988	33414	24.71%
2012	15245	17624	32869	22.68%
2013	14778	15867	30645	14.38%



TRAFFIC PER ATS ROUTES

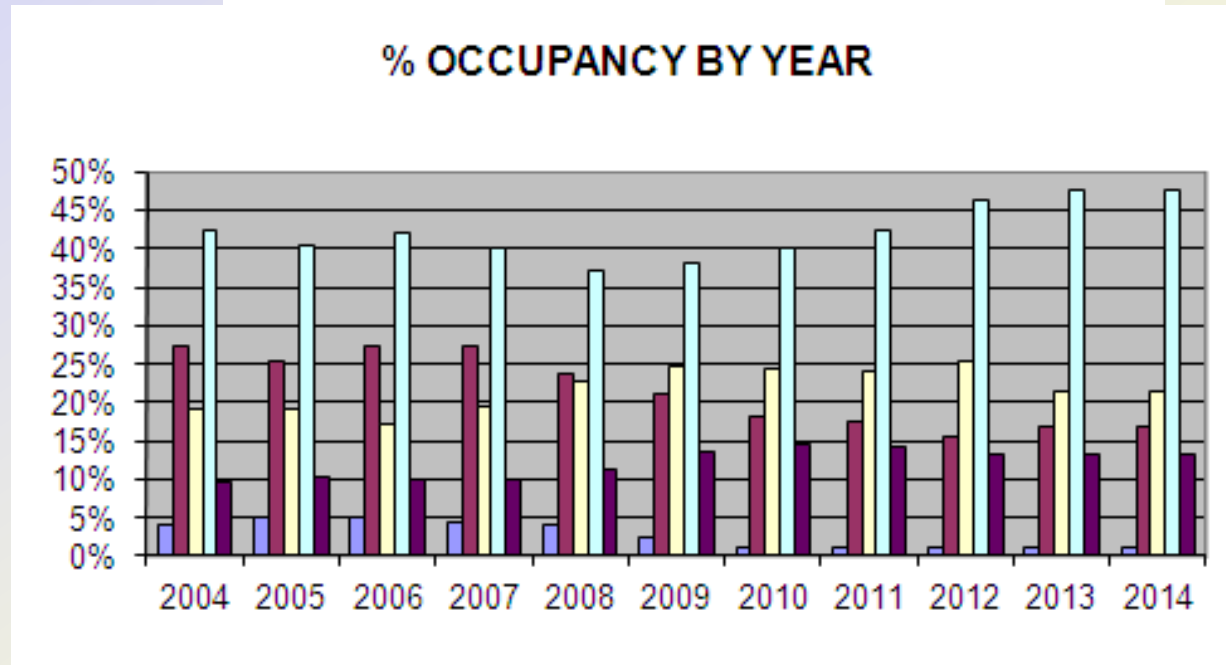
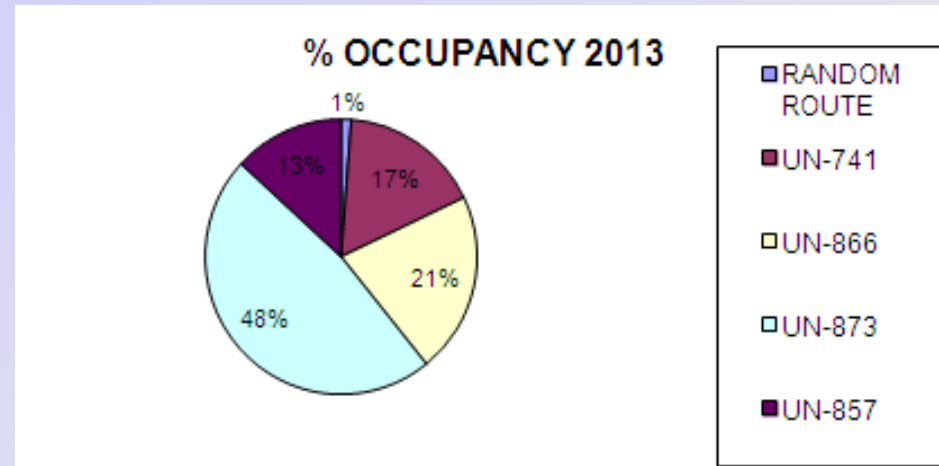
	TOTAL	RANDOM ROUTE	UN-741	UN-866	UN-873	UN-857
2004	26793	1052	7179	4960	11219	2383
2005	28762	1413	7220	5534	11609	2986
2006	29687	1429	7935	5037	12442	2844
2007	33708	1424	9039	6389	13484	3372
2008	35319	1399	8486	8113	13314	4007
2009	29622	845	6383	7173	11320	3901
2010	30102	399	5605	7466	12170	4462
2011	33414	261	5999	8129	14172	4853
2012	32869	292	5009	8237	15129	4202
2013	30645	388	4968	6634	14477	4178

TRAFFIC PER ATS ROUTES

DAILY TRAFFIC

	TOTAL CORREDOR	RANDOM ROUTE		UN-741		UN-866		UN-873		UN-857	
		DAILY	%	DAILY	%	DAILY	%	DAILY	%	DAILY	%
2004	73	3	4%	20	27%	14	19%	31	42%	7	10%
2005	79	4	5%	20	25%	15	19%	32	41%	8	10%
2006	81	4	5%	22	27%	14	17%	34	42%	8	10%
2007	92	4	4%	25	27%	18	20%	37	40%	9	10%
2008	97	4	4%	23	24%	22	23%	36	37%	11	11%
2009	81	2	2%	17	21%	20	25%	31	38%	11	14%
2010	82	1	1%	15	18%	20	24%	33	40%	12	15%
2011	92	1	1%	16	17%	22	24%	39	42%	13	14%
2012	91	1	1%	14	15%	23	25%	42	46%	12	13%
2013	84	1	1%	14	17%	18	21%	40	48%	11	13%
2014	84	1	1%	14	17%	18	21%	40	48%	11	13%

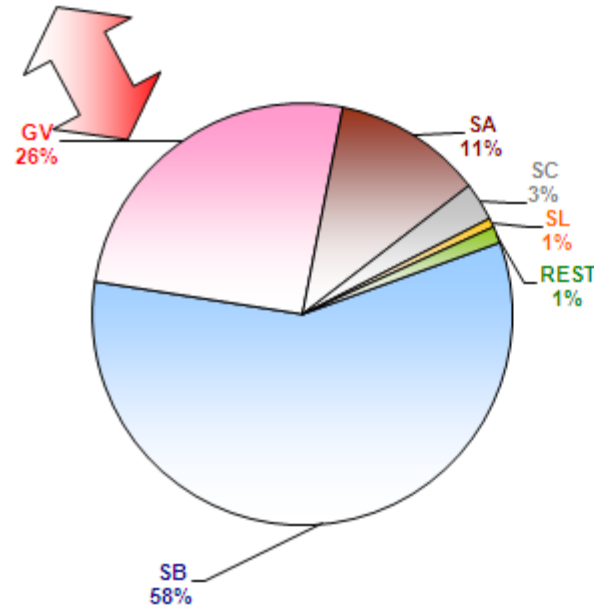
DAILY TRAFFIC



MAIN FLOWS

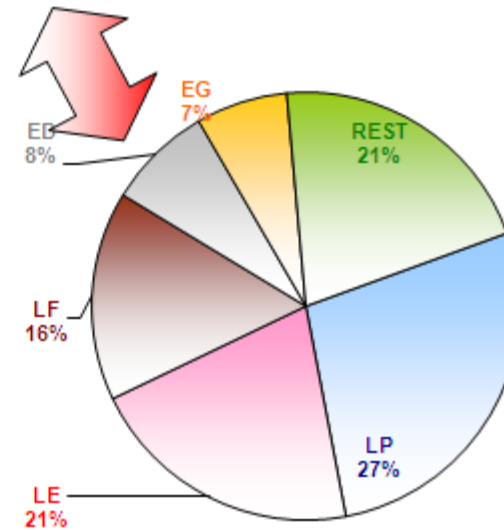
COUNTRY *	2012	2013	VAR %
SB	19797	17790	-10%
GV	7517	7836	4%
SA	3898	3510	-10%
SC	927	904	-2%
SL	96	214	123%
REST	634	391	-38%

* ORIGIN / DESTINATION



COUNTRY *	2012	2013	VAR %
LP	8323	8445	1%
LE	7264	6402	-12%
LF	5555	4846	-13%
ED	3004	2434	-19%
EG	3007	2122	-29%
REST	5716	6396	12%

* ORIGIN / DESTINATION



MAIN AIRPORTS

MAIN AIRPORT: **SBGR**% CORRIDOR: **26.85%**

ATS ROUTE	SOUTHBOUND	NORTHBOUND	TOTAL	% PER ROUTE
RANDOM				
UN-741	1640		1640	20%
UN-866		2655	2655	32%
UN-873	1436	1511	2947	36%
UN-857	577	410	987	12%
TOTAL	3653	4576	8229	

MAIN AIRPORT: **LPPT**% CORRIDOR: **26.85%**

ATS ROUTE	SOUTHBOUND	NORTHBOUND	TOTAL	% PER ROUTE
RANDOM				
UN-741	674		674	8%
UN-866		1913	1913	24%
UN-873	2675	2228	4903	62%
UN-857	176	267	443	6%
TOTAL	3525	4408	7933	

MAIN AIRPORT: **LEMD**% CORRIDOR: **25.89%**

ATS ROUTE	SOUTHBOUND	NORTHBOUND	TOTAL	% PER ROUTE
RANDOM	208	121	329	6%
UN-741	1535		1535	27%
UN-866		1316	1316	23%
UN-873	722	824	1546	27%
UN-857	469	461	930	16%
TOTAL	2934	2722	5656	

MAIN AIRPORTS

MAIN AIRPORT:	LFGP				
% CORRIDOR:	18.46%				
	ATS ROUTE	SOUTHBOUND	NORTHBOUND	TOTAL	± PER ROUTE
	RANDOM	50		50	1%
	UN-741	1123		1123	26%
	UN-866		769	769	18%
	UN-873	626	1337	1963	46%
	UN-857	311	77	388	9%
	TOTAL	2110	2183	4293	

MAIN AIRPORT:	SBGL				
% CORRIDOR:	14.01%				
	ATS ROUTE	SOUTHBOUND	NORTHBOUND	TOTAL	± PER ROUTE
	RANDOM				
	UN-741	477		477	12%
	UN-866		1032	1032	25%
	UN-873	829	1058	1887	46%
	UN-857	455	263	718	17%
	TOTAL	1761	2353	4114	

MAIN AIRPORT:	GVAC				
% CORRIDOR:	13.42%				
	ATS ROUTE	SOUTHBOUND	NORTHBOUND	TOTAL	± PER ROUTE
	RANDOM				
	UN-741	79	1	80	2%
	UN-866		183	183	5%
	UN-873	1253	1838	3091	78%
	UN-857	273	313	586	15%
	TOTAL	1605	2335	3940	

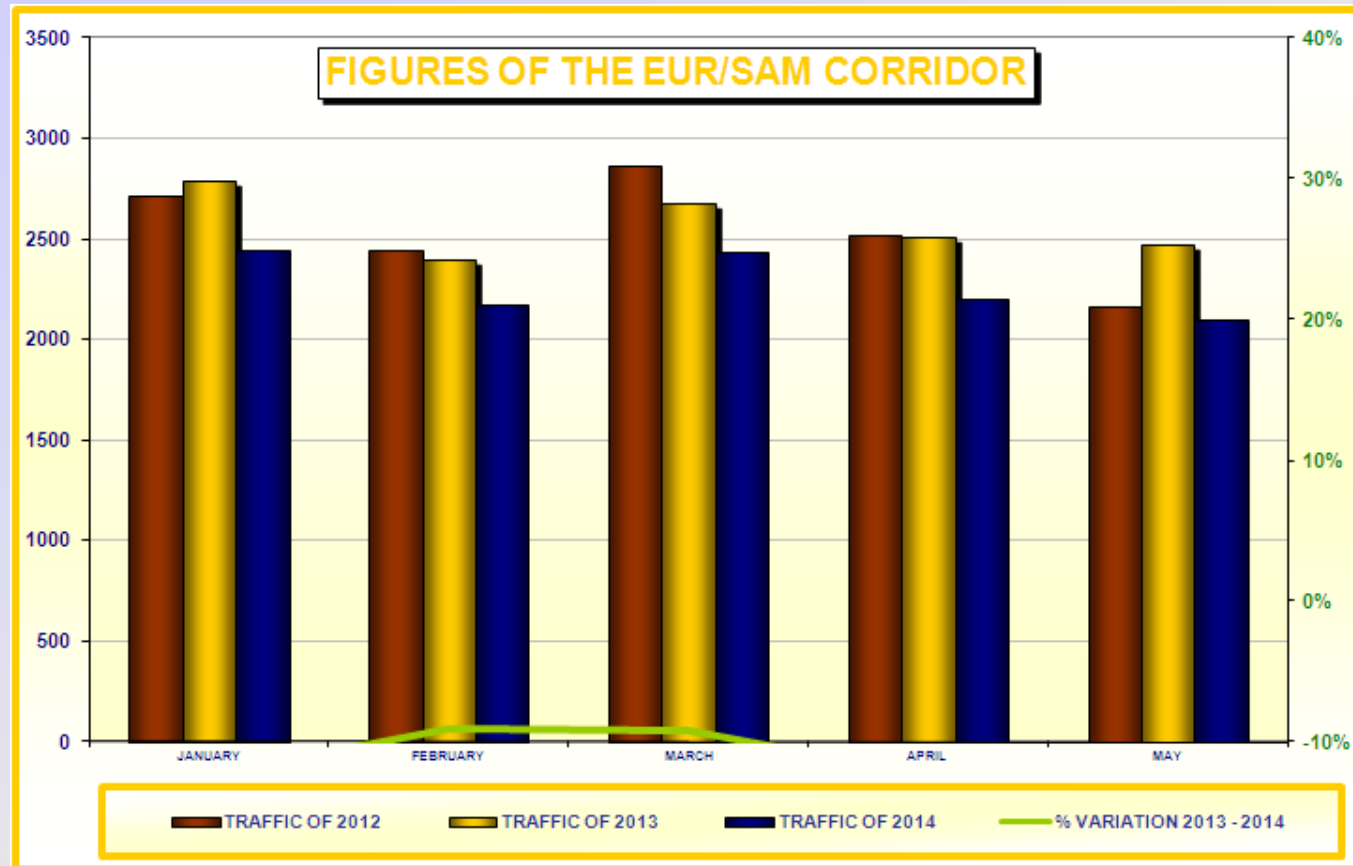
MAIN CITY PAIRS

CITY PAIR	TOTAL	% TOTAL
SAEZ <-> LEMD	1982	6.47%
SBGR <-> LFPG	1820	5.94%
SBGR <-> LEMD	1773	5.79%
SBGL <-> LFPG	1363	4.45%
SBGR <-> LPPT	1032	3.37%
GVNP <-> LPPT	1012	3.30%
SBGL <-> LPPT	934	3.05%
SBGR <-> EDDF	830	2.71%
GVAC <-> LPPT	800	2.61%
SCEL <-> LEMD	729	2.38%
SBGR <-> LIMC	677	2.21%
SBRF <-> LPPT	625	2.04%
SBSV <-> LPPT	614	2.00%
SAEZ <-> LFPG	572	1.87%
SBGR <-> EGLL	560	1.83%
SBFZ <-> LPPT	524	1.71%
SBCF <-> LPPT	499	1.63%
GVAC <-> GCLP	481	1.57%
SBBR <-> LPPT	473	1.54%
SBGL <-> LEMD	452	1.47%
REST	12893	42.07%

EVOLUTION OF AO's

AIRCRAFT OPERATOR	2012	2013	VARIATION
TAP	7158	7187	0.4%
TAM	4738	3374	-28.8%
IBE	3806	3131	-17.7%
AFR	3391	3116	-8.1%
TCV	1354	1348	-0.4%
ARG	1091	1177	7.9%
DLH	1163	985	-15.3%
TOM	1006	851	-15.4%
AEA	622	648	4.2%
KLM	639	638	-0.2%
REST	7901	8190	3.7%

TRAFFIC EVOLUTION IN 2014



MONTH	SOUTHBOUND		NORTHBOUND		TOTAL TRAFFIC IN THE CORRIDOR						% VARIATION	
	2013	2014	2013	2014	2012	DAILY	2013	DAILY	2014	DAILY	2012 - 2013	2013 - 2014
JANUARY	1347	1159	1447	1288	2714	88	2794	90	2447	79	3%	-12%
FEBRUARY	1107	1092	1289	1087	2446	84	2396	86	2179	78	-2%	-9%
MARCH	1290	1108	1393	1329	2869	93	2683	87	2437	79	-6%	-9%
APRIL	1248	914	1264	1286	2524	84	2512	84	2200	73	0%	-12%
MAY	1110	936	1365	1163	2167	83	2475	80	2099	68	14%	-15%
AVERAGE	1232	1042	1322	1231	2739	91	2554	84	2272	75	-6%	-12%