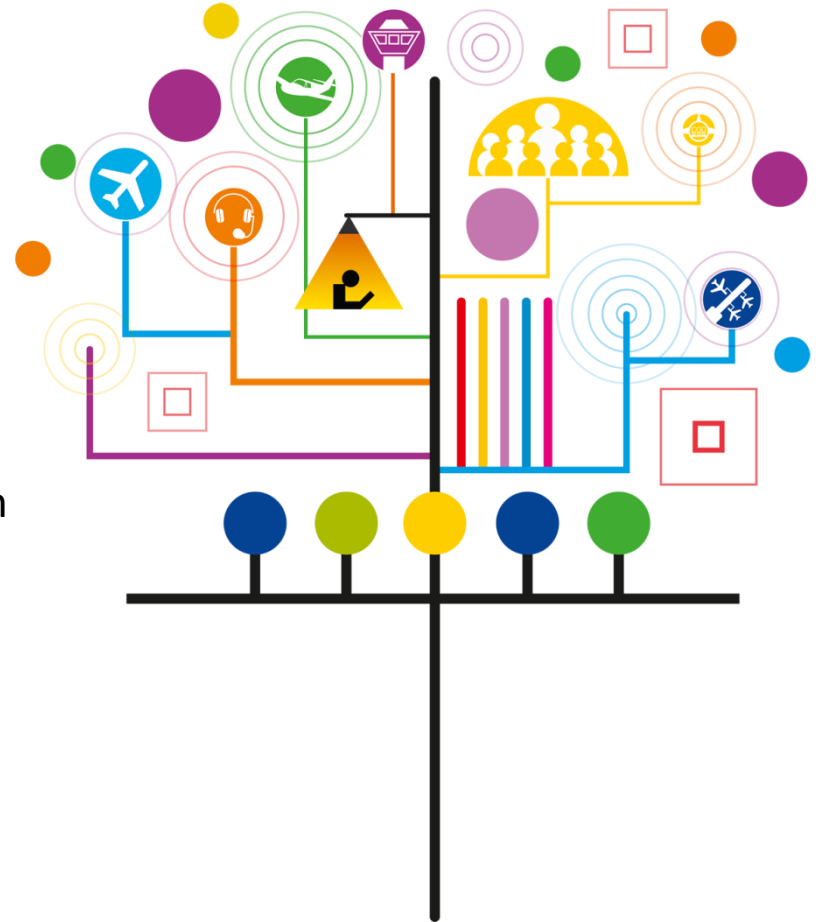


# The Network Manager

EUROCONTROL nominated Single European Sky Network Manager July 2011

Main role:

- optimise European ATM Network's operations with ANSPs and airports;
- ensure that European ATM meets the performance targets set by EC for SES
- provide a consolidated and coordinated approach to all planning and operational activities of the Network
- enable and deliver added operational performance (capacity, delay reduction, environment, flight efficiency, minimum emissions, ops safety, cost-effectiveness)



Connecting the network for improved performance

# Europe's Network Manager

A window on the EUR network  
 Traffic situation on Friday 5 September 2014 at 06:27 UTC

Network Strategy, plans & priorities

Balancing Demand & Capacity

Mitigating, Disruptions & crises

Network Operations Planning

ATFM & IFPS

Network Safety Risks

Integrated Route Network Improvements

Integrating Airports into the Network

Managing scarce resources

Forecasting, monitoring analysing network performance

Current situation

✈		
Planned flights	Airborne	Landed
23,382	4,034	2,021

✈	🕒
Flights delayed more than 30 mins	Total amount of delays today (mins)
79	11,615

🕒 Today's top 5 accumulated delays (mins)

NIH+KOH+LXH+LNH FL335+	2,226
APT: LONDON GATWICK	1,402
APT: CHANIA / IOANNIS DASKALOGI	948
AMSTERDAM FIR CROSS BORDER A	825
BORDEAUX R4	821

🕒 Live delay situation (mins)

APT: LONDON GATWICK	> 30
APT: CHANIA / IOANNIS DASKALOGI	> 30
AMSTERDAM FIR CROSS BORDER A	> 15
CENTRAL	> 15
APT: PARIS CHARLES DE GAULLE	> 15

Legend (delay in mins/flight)

<span style="background-color: #e0f0ff; border: 1px solid black; display: inline-block; width: 15px; height: 10px;"></span> < 15	<span style="background-color: #ffffe0; border: 1px solid black; display: inline-block; width: 15px; height: 10px;"></span> > 15	<span style="background-color: #ffe0e0; border: 1px solid black; display: inline-block; width: 15px; height: 10px;"></span> > 30	<span style="background-color: #ff8080; border: 1px solid black; display: inline-block; width: 15px; height: 10px;"></span> > 45
--	--	--	--

# NM and Operational ATC

- NM main function is to deliver added performance at network level
- This means interactions at operational level
- Some operational projects where NM is in lead:
  - Cooperative Traffic Management
  - Free Route Airspace
  - European ATM information Management
  - Flight efficiency
  - Flexible airspace management

# The 3 ATM Network Plans

- EC Regulation No. 677/2011 ATM Network Functions requires 3 network-related plans to be developed by Network Manager

## Network Strategy Plan

What is needed from the network perspective

## Network Manager Performance Plan

What is the NM contribution

## Network Operations Plan

How will network performance be delivered in next 5 years

**What is the Network Vision by 2020...  
... to achieve predictability, punctuality,  
safety and service continuity.**

**Free Route & Seamless  
Airspace**

**Advanced  
Flexible Use  
of Airspace**

**FREE ROUTES**

**FLIGHT LEVEL 310** **FLIGHT LEVEL 310** **FLIGHT LEVEL 310**

**Low impact ATFM  
measures with  
Cooperative  
Traffic Management**

**STRUCTURED  
AIRSPACE**

- Facilitated access to Airports
- Environment friendly Airport Operations
- PBN in TMA
- A-CDM

**End-to-end  
Information  
Management**

**Efficient CNS  
Infrastructure**

**ENABLERS**

# The Network Manager: 24/7 actor in coordinating & managing response to crisis affecting aviation in Europe

EACCC: NM, EC, EASA, EU Presidency, AO, ANSP, Airports, Military and 40 State Focal Points

**ICAO**  
 ICAO OACI ICAO  
 國際民航組織  
 NM to push for sharing risk assessments

**Bárðarbunga**  
 Alert status  
 NM mechanisms  
 Readiness

**MH17**  
 Airspace status: NM  
 ultimate source of  
 info & support to  
 users

**Ebola**  
 ATTENTION! EBOLA!  
 Supporting role  
 to coordinated  
 response

**Conflict zones**  
 Teleconferences  
 Alternate routes  
 Mitigated impact

Current situation

Planned flights	Airborne	Landed
23,382	4,034	2,021

Flights delayed more than 30 mins	Total amount of delays today (mins)
79	11,615

Today's top 5 accumulated delays (mins)

NIH+KOH+LXH+LNH FL335+	2,226
APT: LONDON GATWICK	1,402
APT: CHANIA / IOANNIS DASKALOGI	948
AMSTERDAM FIR CROSS BORDER A	825
BORDEAUX R4	821

delay situation (mins)

GATWICK	> 30
IOANNIS DASKALOGI	> 30
FIR CROSS BORDER A	> 15
HARLES DE GAULLE	> 15

Network Manager nominated by the European Commission

number: Low visibility in London Gatwick , and high demand for the Greek Islands. No significant enroute problems. Bardarbunga

# European Aviation Crisis Coordination Cell (EACCC)

**EACCC**

Coordinate management of response to the network crisis affecting aviation in Europe

Activated when circumstances beyond normal environment of ops are evident

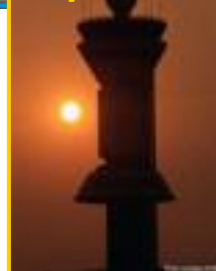


**Airlines**



**Members**

**Airports**



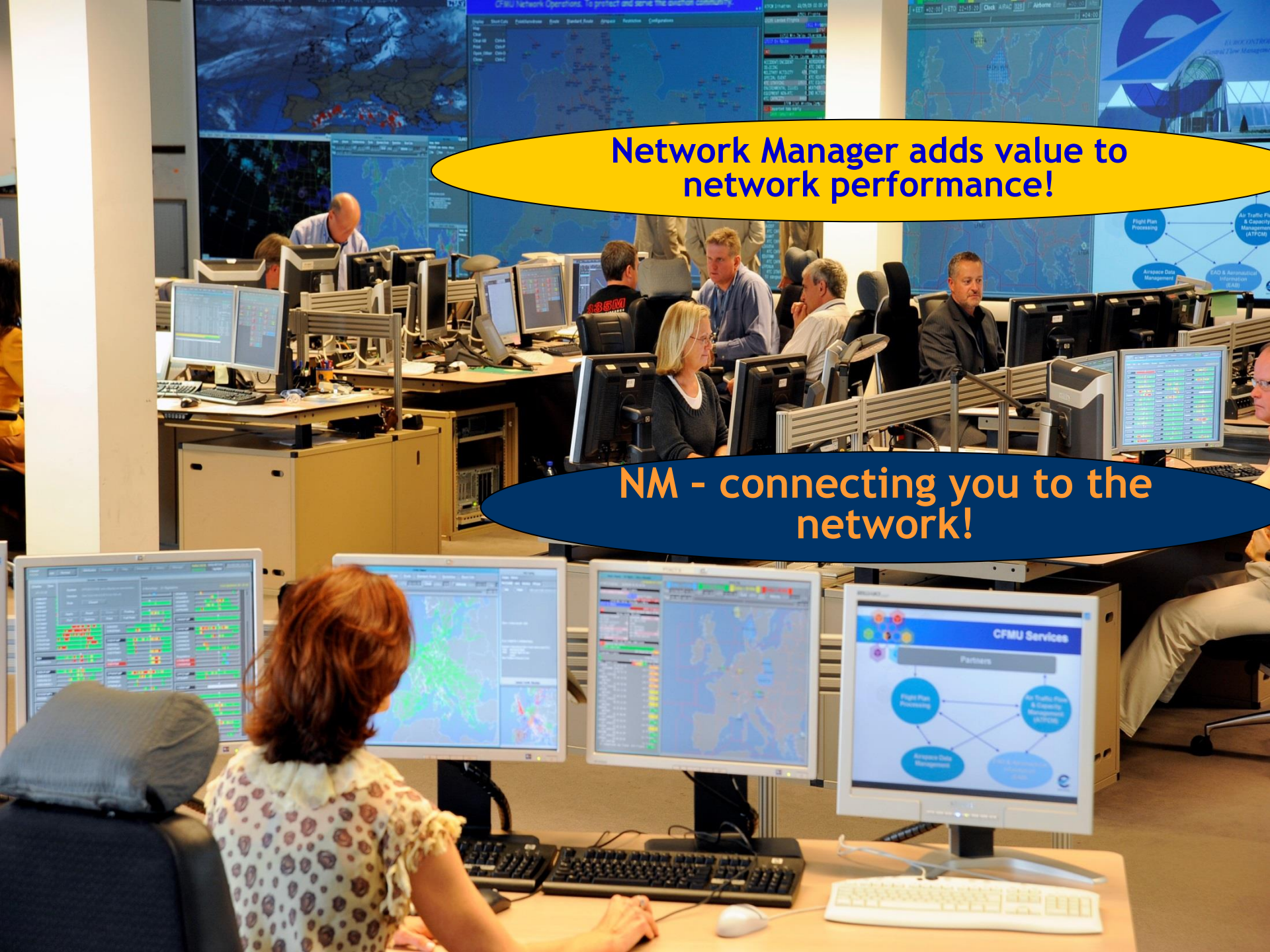
**ANSP**



**Military**



**State focal points**



**Network Manager adds value to network performance!**

**NM - connecting you to the network!**

