

# ATFM TRAINING REQUIREMENTS

Global 8 ATFM Conference

4 – 6 November 2014

Cancun, Mexico

**Brian Flynn**

Head of Performance,  
Forecasting and Relations  
Network Manager Directorate  
EUROCONTROL

**Stuart Ratcliffe**

ATM and ATFM SME  
Airbus ProSky / Metron

**Piyawut Tantimekabut (Toon)**

Engineering Manager  
Network Operations ATM Centre  
AEROTHAI

# Background

- Doc 9971 only briefly mentions training
- Joint task between AEROTHAI and EUROCONTROL in context of ASEAN AATIP project to develop generic ATFM training requirements



# Scope

- Staff requirement assessment
- Staff Competencies
- Staff Selection
- Staff Training
- Validation



# Scope

- Staff Requirement assessment
  - What staff does your ConOps require
  - How many staff members at different levels



# Staff Competencies

- What do you consider are the main areas of competence required for ATFM?



# Skills & Competencies

- CDM
- Conferencing
  - Organize telephone/web conference
  - Leading telephone/web conference
- IT skills
  - Microsoft Excel
  - Data Analysis
- Language skills
  - English or common language



# Scope

- Staff Selection
  - Pre-Requisite Skills
  - Medical requirements
  - Language requirements



# Initial Training Phases

- Staff Training
  - Induction
  - Basic : Theoretical, Practical
  - OJT
  - Complementary Skills
- Validation



# Operational and continuous training

- Validation
  - OJT
  - Check-Out
  - Continuous Training
  - Refresher
  - Periodic validation

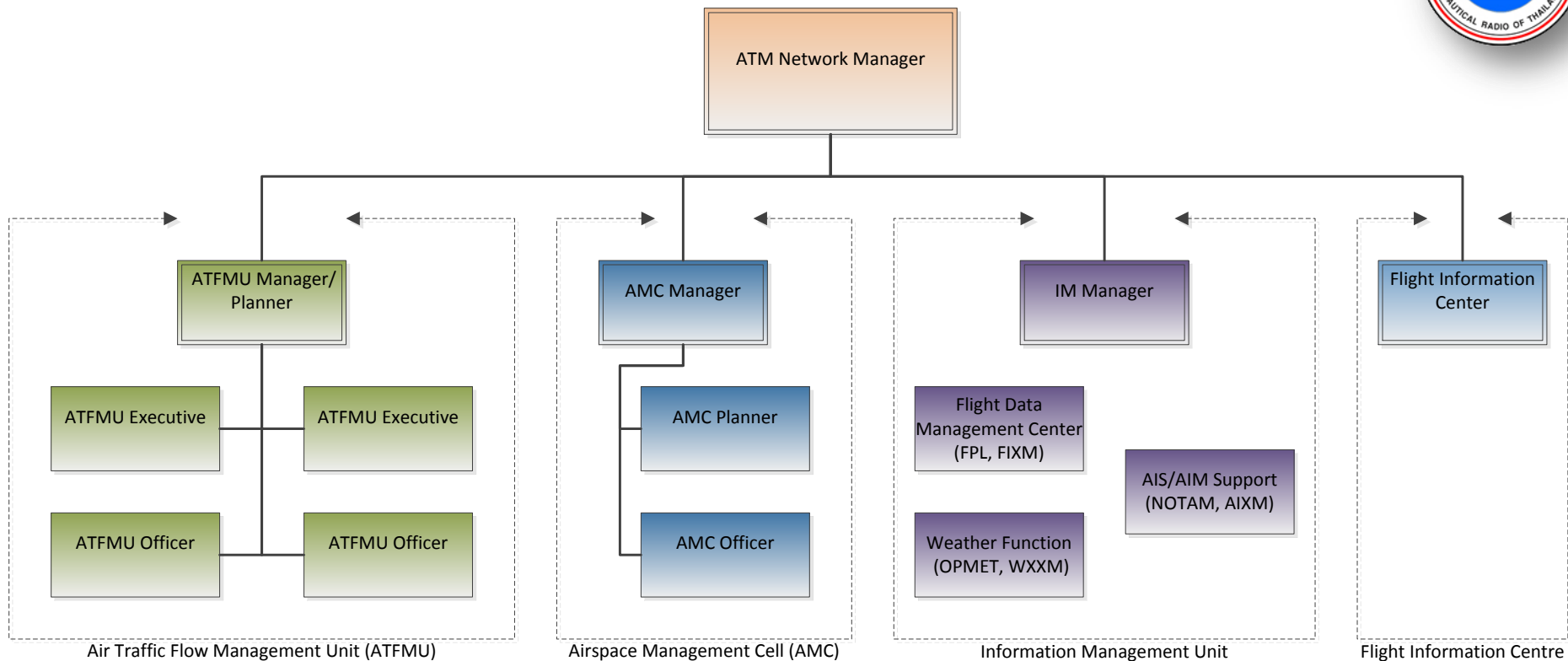


# ATFM Roles and Responsibilities

- Operations Management
- ATFM Planner / Supervisor
- ATFM Executive
- ATFM Support Officer
- CDM partner



# ATM Network Management Centre (ATM NMC)



# Training Levels

- **Level 0:** Awareness.
- **Level 1:** A basic knowledge, remember essential points, to memorize and retrieve data.
- **Level 2:** Ability to understand and to discuss the subject matter intelligently.
- **Level 3:** Thorough knowledge of the subject and the ability to apply it with accuracy.
- **Level 4:** Ability to establish a line of action following the correct chronology and the adequate method to resolve a problem situation. This involves the integration of known applications in a familiar situation.
- **Level 5:** Ability to analyze new situations in order to elaborate and apply one or other relevant strategy to solve a complex problem.

*Source : EUROCONTROL Specification for the ATCO Common Core Content Initial Training*



# Function vs Competency

	<i>Operations management</i>	<i>Supervision</i>	<i>Planner</i>	<i>Execution</i>	<i>Support</i>	<i>CDM partner</i>	<i>General ATM personnel</i>
<b>Subject</b>							
ATM	2	2	2	2	2	1	1
ATFM	2	3	4	3	2	2	1
ATC	2	2	2	1	1	1	1
Airport operations	2	2	2	2	1	1	1
Aircraft operations	2	2	2	2	1	1	1
Meteorology	2	2	3	3	2	1	1
ICAO	3	2	2	2	2	1	1
ATFM tools	2	2	3	3	3	2	1
Capacity assessment	2	2	2	1	1	1	1
Airspace design	2	2	2	1	1	1	1

*Indicated levels are for illustration purposes only*

# Example Training Syllabus

Phase	Basic					
Subject	ATFM General – Objectives, Principles, Benefits					
Objective	•					
Content	Define ATFM.			ICAO Annex 11 definitions, section 3.7.5 Doc 4444 Section 3.2 ATFM		
	Explain <ul style="list-style-type: none"> <li>• ATFM Objectives and Principles</li> <li>• Benefits of ATFM</li> </ul>			Doc 9971 chapter 1		
Terms	Capacity, Exemption, Priority, Strategic, Pre-tactical, Tactical, Post operations, Traffic orientation, Flight level allocation					
Role	Operations management	Supervision	Planner	Execution	Support	CDM partner
Level	4	4	4	4	3	2
Duration						

# ATFM Phases

- ATM Planning
- ATFM Operations
  - Strategic ATFM
  - Pre-Tactical ATFM
  - Tactical ATFM
- Contingency and crisis management
- Post Operations



# Proposed Training Content

- ATM
- ATFM
- Airport Operations
- Aircraft Operations (Airline Operations)
- Meteorology
- ICAO Framework
- Airspace design and capacity assessment
- ATFM tools
- General Skills and competences
- Procedures
- ASBU, SESAR, NEXTGEN



# Next Steps for



- Draft Schedule
  - Initial version available (Nov2014)
  - AEROTHAI / AATIP review checkpoint (Nov 2014)
  - Presentation to Global ATFM (Nov 2014)
  - Presentation to ICAO APAC ATFM/SG (Dec 2014)
  - Circulation to ASEAN ATM focal points
  - Incorporation in Doc 9971 (2015)

# Staff Competencies

- What do you consider are the main areas of competence required for ATFM?

