



International Civil Aviation Organization
South American Regional Office – Regional Project RLA/03/901
REDDIG Management System and Satellite Segment Administration
Fifteenth Meeting of the Coordination Committee (RCC/15)
 Lima, Peru, 15 to 17 August 2012

Agenda item 7: Financial situation of the project and approval of the budget to incorporate the acquisition, operation and maintenance of the new REDDIG II

(Working paper presented by the Secretariat)

SUMMARY	
<p>This working paper presents a detailed breakdown of the expenditures incurred by Project RLA/03/901 and the status of cost-sharing contributions. It also submits to the consideration and acceptance of the Coordination Committee the budget proposal with the estimated costs of the procurement, installation, commissioning and maintenance of the new REDDIG II, including the leasing of the satellite segment that would be required.</p>	
References	
<ul style="list-style-type: none"> • Report of the Fourteenth Meeting of the REDDIG Coordination Committee – Lima, Peru, 16-18 March 2011. • Report of the Twelfth Meeting of Civil Aviation Authorities of the SAM Region (RAAC/12) – Lima, Peru, 3-6 October 2011. • Regional Project RLA/03/901, <i>REDDIG Management System and Satellite Segment Administration</i>, proposed substantive project revision “Q”. 	
ICAO strategic objectives:	<p><i>A – Safety; and</i> <i>C – Environmental protection and sustainable development of air transport.</i></p>

1. Background

1.1 According to the terms established in Project RLA/03/901, ICAO can perform revisions to the project document, to be presented to the Coordination Committee for consideration and to ensure that the signatories of the project have no objections to the proposed changes.

1.2 Mandatory annual budget revisions are considered among such changes, by which the agreed delivery of project inputs or the increased costs due to inflation are set, or the flexibility of the implementing agency concerning expenditures is taken into account.

1.3 Likewise, a detailed breakdown of project expenditures incurred during the previous year is submitted to each coordination meeting, together with the status of cost-sharing contributions.

2. **REDDIG member States**

2.1 The current REDDIG member States are: Argentina, Bolivia, Brazil, Chile, Colombia, Ecuador, France (for French Guiana), Guyana, Paraguay, Peru, Suriname, Trinidad and Tobago, Uruguay and Venezuela.

2.2 Each member State has and operates a node of the network, except Brazil that has and operates three. The network management is performed alternatively from nodes SBMN (in Brazil) and SAEZ (in Argentina).

3. **Summary of expenditures incurred by Project RLA/03/901 between 2003 and 2011**

3.1 **Table # 1** shows the expenditures incurred by Project RLA/03/901. The project expended **USD 373,945** in 2011 and a total of **USD 4,635,734** from 2003 to 2011.

3.2 **Table # 2** contains a bar chart with the distribution of project expenditures per year, as well as a pie chart showing the percentage of implementation by each budget component.

4. **Status of cost-sharing contributions**

4.1 As a result of arrangements agreed for the interconnection of the MEVA II and REDDIG networks, COCESNA became a participant in the cost sharing financing of Project RLA/03/901 as of 2010. Since then, COCESNA is reimbursing to project funds the non-recurrent expenses incurred in the installation and the recurrent costs of maintenance of the link and equipment involved.

4.2 **Table # 3** shows the status of cost-sharing contributions with their distribution according to the proposed project budget Revision "Q". Contributions totalize **USD 7,799,062** to date, less expenditures of **USD 4,635,734**, remains a positive balance of **USD 3,163,328**.

4.3 In addition to the favourable financial balance of the project, it is required the full payment of due contributions for 2011 and 2012 so as not to hinder project implementation.

5. **Extension of project budget to cover the implementation of REDDIG II**

5.1 The proposed substantive revision "Q" of the RLA/03/901 Project document has been prepared mainly to include as Immediate Objective # 4 the acquisition, installation; commissioning and maintenance of the new digital network REDDIG II.

5.2 Costs estimated to implement the REDDIG II are those considered in Conclusion RAAC/12-6 (reproduced in Attachment B to NE/03) of the Twelfth Meeting of Civil Aviation Authorities of the SAM Region (RAAC/12), held in Lima, Peru, from 3 to 6 October 2011. The relevant figures have been included in the RLA/03/901 budget revision "Q" attached to this paper, which is part of the project substantive revision document presented with WP/04.

5.3 In accordance with the commitment made through the said Conclusion RAAC/12-6, in February 2012 the REDDIG Member States were asked to deposit this year in ICAO account the funds required to finance the acquisition of REDDIG II, estimated at USD 4,500,000. So far 25% of that amount has been received.

5.4 The cost sharing to cover the usual costs for operation and maintenance of the REDDIG, referred to in the budget revision "Q" of the RLA/03/901 Project, have been calculated based on the distribution of the costs of the satellite segment, according to the use of bandwidth.

5.5 The project document establishes that the cost of leasing the satellite segment will be distributed based on the bandwidth used, according to the actual traffic of each node. **Table # 4** shows an updating of the relevant estimates for the total project duration as per revision "Q". The following criteria apply to estimate the bandwidth distribution:

- a) An actual measuring period of twelve (12) months.
- b) The source average is obtained and reported directly by the NCC Service History. Additionally, it is considered that 30% of the source average of the SBMN node would correspond to traffic of the REDDIG Administration to all nodes.
- c) This 30% is divided by 16 nodes and is charged to each node accordingly.
- d) The average bandwidth of each node is the result of adding its source average to 1/16 of 30% of the source average of the SBMN node.
- e) The actual average (Kbps) shown is equivalent to using the bandwidth continuously (Kbps) throughout the measuring period.

5.6 In view of the above, the Committee is requested to consider the adoption of the following conclusion:

Conclusion RCC 15/XX - Payment of cost sharing contributions to Project RLA/03/901

REDDIG member States that have not yet deposited their cost-sharing contributions to RLA/03/901 Project for the years 2011 and 2012, are encouraged to do so as soon as possible to allow the normal development of project activities.

Likewise, States that have not yet responded to letters requesting to deposit the funds required to finance the REDDIG II, are urged to do so as soon as possible during the second half of 2012, so that ICAO can sign the contract with the company winning the tender.

6. Suggested action

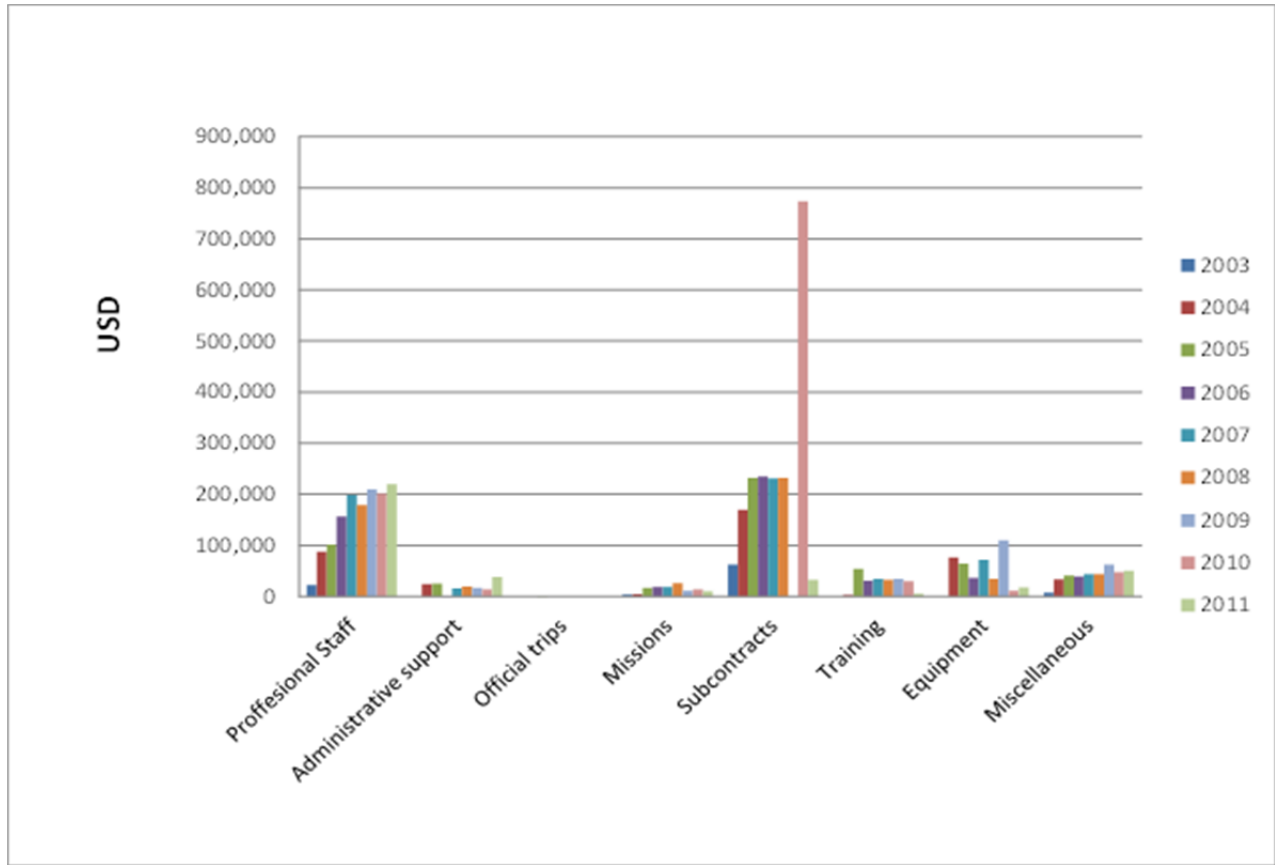
6.1 The Coordination Committee is invited to:

- a) Take note of the information contained in this paper;
- b) Consider and approve the conclusion proposed in section 5 of this paper; and
- c) Approve the attached budget of RLA/03/901 Project for 2012 and its extension until December 2018, which is part of the substantive revision "Q" presented with WP/04.

Table # 1 - Detailed breakdown of expenditures up to 31 December 2011

Item	2003	2004	2005	2006	2007	2008	2009	2010	2011	TOTAL
BL 11 Experts										
REDDIG Administrator	22,359	93,953	101,296	156,503	197,784	177,449	207,289	201,030	209,250	1,366,913
Consultants		-6,303				1,499			9,200	4,396
BL 13 Administrative support										
13-01 Secretary	354	12,185	12,551	0	15,968	18,987	16,497	14,066	19,086	109,694
13-02 REDDIG technician		12,000	12,108	711						24,819
13-05 Administrative and financial assistant									10,670	10,670
13-06 Information technology clerk									8,931	8,931
BL 15 Official trips		321	925	499						1,745
BL 16 Missions	3,504	4,110	16,732	18,642	18,357	25,718	10,615	14,110	10,250	122,038
BL 17 National professionals							2,080		961	3,041
BL 20 Sub-contracts										
21-01 PanAmSat (1 Oct-31 Dec 2003) PO 30473	62,727									62,727
21-01 PanAmSat (2004) P.O. 40670		168,849	231,264	231,264	231,264	231,264		693,792		1,787,697
21-02 Network access									32,831	32,831
21-07 MEVA/REDDIG Non Recurrent								77,684		77,684
21-98 Professional liability insurance		845	1,156	3,469		1,156	1,156	1,810		9,592
BL 39 Training		3,014	53,862	30,553	34,044	32,852	34,412	29,496	5,130	223,363
BL 40 Equipment										
45-01 Spare parts		-12,752	59,541	36,311	71,637	33,997	108,509	8,218	2,896	308,357
45-02 Office equipment	82		2,083	-30	0			351	3,402	5,888
45-03 Equipment operation and maintenance		1,716	1,782		0			1,676	2,009	7,183
45-04 Transfer of NCC from SPIM to SBMN										
PO 40694 VIASAT		8,250								8,250
PO 40687 MEMOTEC		4,250								4,250
45-05 PO 40489 Extension of SEEE contract		50,000								50,000
45-06 PO 40090 SEEE back-up network		24,820								24,820
45-09 MEVA-REDDIG interconnection equipment									9,439	9,439
45-98 Professional liability insurance (PLI)		444	284	246		130	1,109	1,250		3,463
BL 53-01 Tel., banking expenses, courier, etc.	643	4,726	4,475	1,150	8,688	4,632	3,703	14,253	13,351	55,621
BL 53-02 PNUD services		118	505	337	0		3,318			4,278
55-01 AOSC overhead	6,439	28,795	35,817	37,372	34,601	39,503	55,621	33,357	36,539	308,044
TOTAL	96,108	399,341	534,381	517,027	612,343	567,187	444,309	1,091,093	373,945	4.635,734

Table # 2
Distribution of project expenditures per year



Percentage of implementation by each budget component

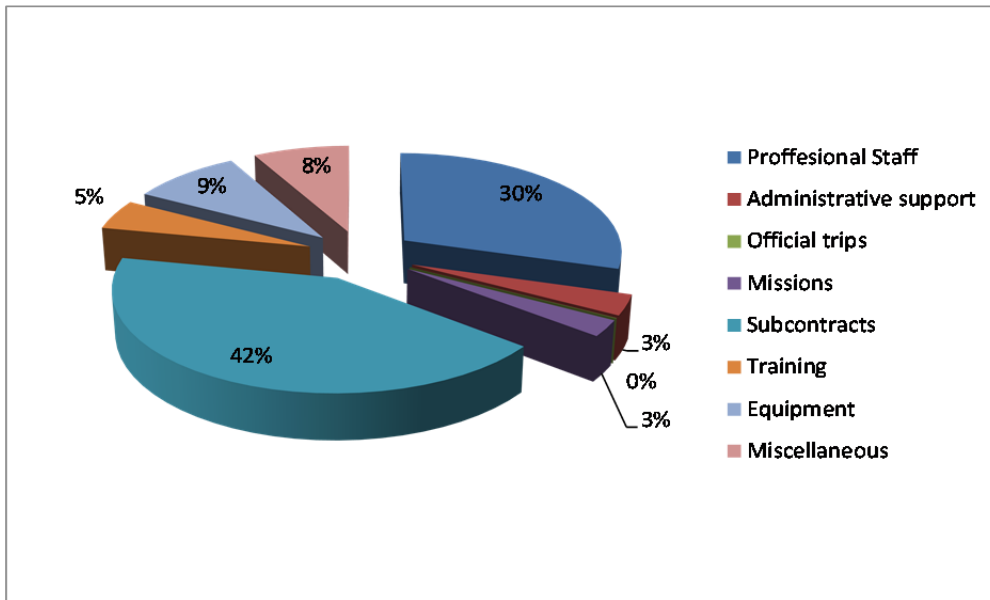


Table # 3 - Status of cost-sharing contributions to Project RLA/03/901 as per Revision "O"

State	2003	2004	2005	2006	2007	2008	2009	2010	2011		2012		Total quotas	Total paid	Total debts
	Quota	Quota	Quota	Quota	Quota	Quota	Quota	Quota	Quota	Debt	Quota	Debt			
Argentina	50,363	30,100	37,800	44,800	66,700	80,000	85,063	86,201	82,500		363,218	363,218	926,745	563,527	363,218
Bolivia	39,563	22,100	28,900	33,600	10,900	43,675	52,460	48,039	43,924		324,355	281,250	647,516	366,266	281,250
Brazil	123,790	72,900	79,400	111,000	60,800	81,444	118,154	137,644	148,003		993,893	-4,941	1,927,028	1,931,969	-4,941
Chile	40,013	35,100	36,400	67,000	28,710	29,500	29,500	1,000	45,000		44,791		357,014	357,014	0
Colombia	24,269	0	162,094	0	150,000	0	7,441	0	67,201		346,822	-65,572	757,827	823,399	-65,572
Ecuador	40,913	15,200	25,500	29,100	19,000	40,865	51,589	35,000	35,000		328,951		621,118	621,118	0
France	34,763	11,300	20,900	26,400	25,000	45,795	51,371	24,092	42,203		323,622	323,647	605,446	281,799	323,647
Guyana	34,313	9,900	19,900	22,900	15,000	35,935	43,009	30,000	30,000		314,398	291,499	555,355	263,856	291,499
Paraguay	35,363	12,700	21,900	30,700	25,600	46,160	53,262	47,056	40,162	70	323,073	323,143	635,976	312,833	323,213
Peru	49,613	28,300	36,500	39,700	40,000	71,372	77,820	78,271	77,000		349,287	281,250	847,863	566,613	281,250
Suriname	34,313	7,400	18,500	28,700	18,300	36,412	44,752	30,000	30,000	30,015	318,461	348,476	566,838	218,362	378,491
Uruguay	47,513	16,200	28,800	28,000	77,171	64,003	39,759	30,000	30,000	11,265	325,269	55,314	686,715	631,401	66,579
Venezuela	44,213	15,800	27,200	45,800	38,700	71,774	81,664	88,967	80,000		368,283	368,283	862,401	494,118	368,283
Trinidad & Tobago	0	0	22,700	22,700	15,500	37,791	48,776	30,000	30,000		318,571	286,330	526,038	239,708	286,330
COCESNA	0	0	0	0	0	0	0	28,400	19,193		19,193	1,641	66,786	65,145	1,641
Interest	1,447	4,765	9,685	16,157	17,065	8,630	2,023	785	468		658		61,683	61,683	N/A
Adjustments							-75	-15	379		-38		251	251	N/A
TOTAL	600,449	281,765	576,179	546,557	608,446	693,356	786,568	695,440	801,033	41,350	5,062,807	2,853,538	10,652,600	7,799,062	2,894,888

NOTE: Some differences between the amount deposited by the States and that shown by ICAO are due to transaction costs or exchange rates.

Table 4 - Bandwidth distribution

	2003		2004		2005		2006		2007		2008		2009		2010	
	BW	%	BW	%	BW	%	BW	%	BW	%	BW	%	BW	%	BW	%
Argentina	128.8	10.441%	140.5	10.539%	58.9	12.107%	97.0	14.560%	79.0	14.286%	76.2	17.209%	85.0	14.915%	96.7	15.534%
Bolivia	71.2	5.772%	90.4	6.781%	28.0	5.755%	34.0	5.104%	32.5	5.877%	21.3	4.810%	30.7	5.387%	33.2	5.333%
Brazil	112.0	9.079%	145.7	10.929%	64.4	13.237%	74.0	11.108%	47.7	8.626%	39.0	8.808%	57.0	10.002%	59.7	9.590%
Brazil	43.2	3.502%	92	6.901%	41.2	8.469%	34.5	5.179%	33.4	6.040%	21.1	4.765%	33.1	5.808%	38.6	6.201%
Brazil	85.6	6.939%	66.4	4.980%	7.5	1.542%	13.9	2.086%	10.9	1.971%	10.5	2.371%	12.3	2.158%	13.1	2.104%
Chile	73.6	5.966%	132.8	9.961%	35.3	7.256%	66.9	10.042%	35.0	6.329%	16.7	3.771%	20.6	3.615%	21.7	3.486%
Colombia	125.6	10.182%	124.8	9.361%	48.3	9.928%	58.1	8.721%	56.4	10.199%	32.3	7.294%	42.6	7.475%	41.3	6.635%
Ecuador	78.4	6.355%	71.2	5.341%	17.5	3.597%	19.5	2.927%	26.1	4.720%	16.0	3.613%	28.7	5.036%	27.0	4.337%
France	45.6	3.696%	44.8	3.360%	15.9	3.268%	30.4	4.563%	29.5	5.335%	25.3	5.714%	28.2	4.948%	26.4	4.241%
Guyana	43.2	3.502%	39.2	2.940%	9.4	1.932%	8.3	1.246%	7.2	1.302%	6.7	1.513%	9.0	1.579%	9.6	1.542%
Paraguay	48.8	3.956%	50.6	3.795%	24.8	5.098%	27.7	4.158%	16.4	2.966%	14.7	3.320%	18.8	3.299%	25.4	4.080%
Peru	124.8	10.117%	133.2	9.991%	48.1	9.887%	75.7	11.363%	68.9	12.459%	64.0	14.453%	74.6	13.090%	76.9	12.353%
Suriname	43.2	3.502%	31.2	2.340%	20.6	4.234%	15.8	2.372%	11.2	2.025%	7.6	1.716%	13.0	2.281%	17.0	2.731%
Trinidad & Tobago							20.9	3.137%	9.2	1.664%	10.2	2.304%	13.4	2.351%	17.2	2.763%
Uruguay	113.6	9.209%	89.6	6.721%	19.3	3.967%	33.5	5.029%	27.4	4.955%	26.0	5.872%	28.4	4.983%	29.4	4.723%
Venezuela	96.0	7.782%	80.8	6.061%	47.3	9.723%	56.0	8.406%	62.2	11.248%	55.2	12.466%	74.5	13.072%	89.3	14.345%
TOTAL	1233.6	100%	1.333.20	100%	486.50	100%	666.20	100%	553.00	100%	442.80	100%	569.90	100%	622.50	100%

PROJECT BUDGET

(in US dollars)

Country: Regional for South America
 Project: RLA/03/901/Q
 Title: REDDIG Management System and Satellite Segment Administration

Starting date: 1 July 2003
 Termination date: 31 December 2018

10-Jul-12

	TOTAL	*-----	2003	*-----	2004	*-----	2005	*-----	2006	*-----	2007	*-----	2008	*-----	2009	*-----	2010
	USD	M/M	USD	M/M	USD	M/M	USD	M/M	USD	M/M	USD	M/M	USD	M/M	USD	M/M	USD
10 PROJECT PERSONNEL																	
11 International Professionals																	
11-01 Network Administrator	3,086,913	2.5	22,359	12.0	93,953	12.0	101,296	12.0	156,503	12.0	197,784	12.0	177,449	12.0	207,289	12.0	201,030
11-51 Institutional Aspects																	
11-97 Consultants	116,396				(6,303)								1,499				
11-99 Sub-Total	3,203,309	2.5	22,359	12.0	87,650	12.0	101,296	12.0	156,503	12.0	197,784		178,948		207,289		201,030
13 ADMINISTRATIVE SUPPORT																	
13-01 Bilingual secretary	285,178		354	6.0	12,185	6.0	12,551			6.0	15,968	6.0	11,471	6	16,497	6	14,066
13-02 REDDIG technician	24,819			12.0	12,000	12.0	12,108		711								
13-03 REDDIG technician 2	0																
13-04 Bilingual secretary (final)	7,516												7,516				
13-05 Administrative and financial assistant	105,370																
13-06 Information technology clerk	29,511																
13.99 Sub-Total	452,394		354	18	24,185	18	24,659	0	711	6	15,968	6	18,987	6	16,497	6	14,066
15 OFFICIAL TRAVEL																	
15-01 Official travel	1,745				321		925		499								
15-99 Sub-total	1,745				321		925		499		0		0		0		0
16 MISSIONS																	
16-01 Mission costs	302,038		3,504		4,110		16,732		18,642		18,357		25,718		10,615		14,110
16-99 Sub-total	302,038		3,504		4,110		16,732		18,642		18,357		25,718		10,615		14,110
17 NATIONAL PROFESSIONALS																	
17-01 National Professionals	3,041														2,080		
17-99 Sub-total	3,041														2,080		0
19 Component total	3,962,527		26,217		116,266		143,612		176,355		232,109		223,653		236,481		229,206
20 SUBCONTRACTS																	
21-01 Rental of satellite segment (P.O. 40670)																	
P.O. 30473 (1 Oct 2003 to 31 Dec 2003)	62,727		62,727														
P.O. 40670 (1 Jan 2005 to 31 Dec 2008)	1,093,905				168,849		231,264		231,264		231,264		231,264				
Rental 2009-2011	693,792																693,792
Rental 2012-2014	693,792																
Rental 2015-2018	1,000,000																
21-02 Network Access	264,755																
21-03 MEVA/REDDIG Recurrent Brazil	20,580																
21-04 MEVA/REDDIG Recurrent Caracas	70,896																
21-05 MEVA/REDDIG Recurrent Bogota	70,140																
21-06 MEVA/REDDIG Recurrent Lima	20,580																
21-07 MEVA/REDDIG Non Recurrent	77,684																77,684

PROJECT BUDGET

(in US dollars)

Country: Regional for South America
 Project: RLA/03/901/Q
 Title: REDDIG Management System and Satellite Segment Administration

Starting date: 1 July 2003
 Termination date: 31 December 2018

10-Jul-12

	TOTAL	*-----	2003	*-----	2004	*-----	2005	*-----	2006	*-----	2007	*-----	2008	*-----	2009	*-----	2010
	USD	M/M	USD	M/M	USD	M/M	USD	M/M	USD	M/M	USD	M/M	USD	M/M	USD	M/M	USD
Terrestrial service SAEZ	150,000																
Terrestrial service SLLP	150,000																
Terrestrial service SBCT	150,000																
Terrestrial service SBMN	150,000																
Terrestrial service SBRF	150,000																
Terrestrial service SCEL	150,000																
Terrestrial service SKED	150,000																
Terrestrial service SEGU	150,000																
Terrestrial service SOCA	150,000																
Terrestrial service SYGC	150,000																
Terrestrial service SGAS	150,000																
Terrestrial service SPIM	150,000																
Terrestrial service SMPM	150,000																
Terrestrial service TTZP	150,000																
Terrestrial service SUMU	150,000																
Terrestrial service SVMI	150,000																
21-98 Professional liability insurance	44,592				845		1,156		3,469			1,156		1,156		1,810	
29 Component total	6,513,443		62,727		169,694		232,420		234,733		231,264		232,420		1,156		773,286
30 TRAINING																	
31 Individual fellowships																	
31-01 SAEZ (Vittor)	883						883										
31-02 SCEL (Vergara)	859						859										
31-03 SEGU (Avellán)	857						857										
31-04 SEGU (Tapia)	857						857										
31-05 SOCA (Burtin)	870						870										
31-06 SYGC (Salisbury)	857						857										
31-07 SMPM (Maharban)	857						857										
31-08 SMPM (Martosoewito)	857						857										
31-09 SVMI (Correa)	857						857										
31-10 SOCA (Berton)	870						870										
31-11 SVMI (Padrón)	857						857										
31-12 SAEZ (Schenk)	1,422						1,422										
31-13 SBMN (Mello)	1,422						1,422										
31-14 SGAS (Torres)	857						857										
31-15 SGAS (Pereira)	857						857										
31-16 SUMU (Vera)	857						857										
31-17 SUMU (Pelayo)	857						857										
31-18 SLLP (Balderrama)	870						1,000				-130						
31-19 SLLP (Tito)	870						1,000				-130						
31-20 SVMI (Castillo)	858						858										
	0																
31-21 SYGC (Mortimer)	1,017								1,017								
31-22 SYGC (Stanley)	1,017								1,017								
31-23 SMPM (Rabindre)	876								1,017		-141						
31-24 SMPM (Wakidi)	876								1,017		-141						
31-25 SAEZ (Vittor)	1,017								1,017								

PROJECT BUDGET

(in US dollars)

Country: Regional for South America
 Project: RLA/03/901/Q
 Title: REDDIG Management System and Satellite Segment Administration

Starting date: 1 July 2003
 Termination date: 31 December 2018

10-Jul-12

		TOTAL	*-----	2003	†-----	2004	*-----	2005	*-----	2006	*-----	2007	*-----	2008	*-----	2009	*-----	2010
		USD	M/M	USD	M/M	USD	M/M	USD	M/M	USD	M/M	USD	M/M	USD	M/M	USD	M/M	USD
31-26	SAEZ (Alaniz)	1,017								1,017								
31-27	SKED (Ciro)	1,727								1,727								
31-28	SKED (Sanchez)	1,727								1,727								
31-29	SGAS (Torres)	1,659								1,659								
31-30	SGAS (Pereira)	1,659								1,659								
31-31	SLLP (Lara)	1,017								1,017								
31-32	SLLP (Tito)	1,017								1,017								
31-33	SUMU (Vera)	2,538								2,538								
31-34	SUMU (Pelayo)	2,538								2,538								
31-35	TTZP (Gunnes)	1,017								1,017								
31-36	TTZP (Rupnarine)	1,017								1,017								
31-37	SEGU (Avellan)	988								988								
31-38	SEGU (Cepeda)	987								987								
31-39	SPIM (Cespedes)	2,142								2,142								
31-40	SPIM (Donayre)	2,142								2,142								
		0																
31-41	SYGC (Mohanram)	1,323										1,323						
31-42	SYGC (Gittens, Troy)	1,323										1,323						
31-43	SGAS (Pereira, Aldo)	4,153										4,153						
31-44	SGAS (Torres, David)	2,251										2,251						
31-45	TTZP (Mckay, Garvin)	1,323										1,323						
31-46	TTZP (Baboolal, Rupnarine)	1,323										1,323						
31-47	SUMU (Vera, Miguel)	2,460										2,460						
31-48	SUMU (Pelayo, Daniel)	2,460										2,460						
31-49	SEGU (Avellan, Raul)	2,623										2,623						
31-50	SEGU (Rugel, Arnoldo)	1,323										1,323						
31-51	SLLP (Balderrama, Barrios)	1,323										1,323						
31-52	SLLP (Huayllas, Hernan)	1,323										1,323						
31-53	SAEZ (Vittor, Cristian)	3,161										3,161						
31-54	SAEZ (Canna, Hernan)	3,161										3,161						
31-55	SPIM (Peralta, Donayre)	2,125										2,125						
31-56	SPIM (Velazquez Palomares)	2,125										2,125						
		0																
31-57	SAEZ (Carlos Adragna)	1,432											1,432					
31-58	SAEZ (Obdulio Gourarnalusse)	1,432											1,432					
31-59	SAEZ (Jaiver Schenk)	2,147											2,147					
31-60	SMPN (Rabindre Kumar)	1,119											1,119					
31-61	TTZP (Moses Brumant)	1,119											1,119					
31-62	TTZP (Garvin Mc Kay)	1,119											1,119					
31-63	SOCA (Gilles Marland)	1,119											1,119					
31-64	SOCA (Serge Diotalevi)	1,119											1,119					
31-65	SMPN (Mahabier Radjinderloemar)	1,119											1,119					
31-66	SAEZ (Carlos Adragna)	2,467											2,467					
31-67	SAEZ (O. Ferreyra)	2,467											2,467					
31-68	SGAS (J. Alarcón)	2,523											2,523					
31-69	SGAS (César Brizuela)	2,523											2,523					

PROJECT BUDGET

(in US dollars)

Country: Regional for South America
 Project: RLA/03/901/Q
 Title: REDDIG Management System and Satellite Segment Administration

Starting date: 1 July 2003
 Termination date: 31 December 2018

10-Jul-12

		TOTAL	*-----	2003	†-----	2004	*-----	2005	*-----	2006	*-----	2007	*-----	2008	*-----	2009	*-----	2010
		USD	M/M	USD	M/M	USD	M/M	USD	M/M	USD	M/M	USD	M/M	USD	M/M	USD	M/M	USD
31-70	SGAS (V. Morán)	2,523												2,523				
31-71	SUMU (I. Espalter)	2,272												2,272				
31-72	SUMU (E. Diaz)	2,272												2,272				
31-73	SPIM (S. Velásquez)	2,041												2,041				
31-74	SPIM (J. Wilson)	2,039												2,039				
		0																
31-75	SAEZ (C. Adragna)	1,022														1,022		
31-76	SAEZ (J. Vittor)	1,022														1,022		
31-77	SAEZ (M. Moreno)	1,022														1,022		
31-78	SGAS (A. Pereira)	1,830														1,830		
31-79	SGAS (V. Morán)	1,830														1,830		
31-80	SGAS (G. Baez)	1,830														1,830		
31-81	SPIM (J. García)	799														799		
31-82	SPIM (J. Salazar)	799														799		
31-83	SPIM (R. Peralta)	799														799		
31-84	SKED (N. Torres)	1,022														1,022		
31-85	SKED (G. Guzmán)	1,022														1,022		
31-86	SLLP (H. Balderrama)	1,022														1,022		
31-87	SLLP (P. Huayllas)	1,022														1,022		
31-88	SUMU (M. Vera)	1,010														1,010		
31-89	SUMU (E. Diaz)	1,010														1,010		
31-90	SYGC (M. Salisbury)	1,267														1,267		
31-91	SYGC (S. Jackson)	1,267														1,267		
31-92	SOCA (G. Marland)	1,267														1,267		
31-93	SEGU (A. Cepeda)	1,022														1,022		
31-94	SEGU (W. Quinde)	1,022														1,022		
34-03	TTZP (R. Halliday)	1,289														1,289		
34-04	TTZP (S. Saroop)	1,289														1,289		
		0																
31-95	SMPM (R. Maharban)	1,482																1,482
31-96	SMPM (R. Lansdorf)	1,482																1,482
31-97	SAEZ (C. Adragna)	2,121																2,121
31-98	SAEZ (H. Canna)	1,248																1,248
31-99	SUMU (W. Pelayo)	1,482																1,482
36-01	SUMU (R. Facal)	1,482																1,482
36-02	SVMI (A. Arias)	1,482																1,482
36-03	SVMI (L. Escobar)	1,482																1,482
36-04	SGAS (J. Estigarribia)	1,482																1,482
36-05	SGAS (O. Pereira)	1,482																1,482
36-06	SYGC (M. Salisbury)	1,482																1,482
36-08	SEGU (B. Iglesias)	1,482																1,482
36-09	SEGU (E. Cepeda)	1,482																1,482
36-10	SCEL (C. Vergara)	1,482																1,482
36-11	SKED (D. Rodríguez)	1,482																1,482
31-88	SUMU (M. Vera)	-1,010																-1,010
34-05	TTZP (S. Gopaul)	1,482																1,482

PROJECT BUDGET

(in US dollars)

Country: Regional for South America
 Project: RLA/03/901/Q
 Title: REDDIG Management System and Satellite Segment Administration

Starting date: 1 July 2003
 Termination date: 31 December 2018

10-Jul-12

		TOTAL	*-----	2003	†-----	2004	*-----	2005	*-----	2006	*-----	2007	*-----	2008	*-----	2009	*-----	2010
		USD	M/M	USD	M/M	USD	M/M	USD	M/M	USD	M/M	USD	M/M	USD	M/M	USD	M/M	USD
31-75	SAEZ (C. Vittor)	873																873
31-77	SAEZ (M. Moreno)	873																873
		0																
36-12	SMPM (R. Maharban)	1,014																
36-13	SMPM (K. Goercharan)	1,014																
36-15	SUMU (M. Vera)	1,014																
36-16	SCEL (C. Vergara)	1,014																
36-17	SVMI (J. Castillo)	1,014																
36-18	SYGC (S. Hemchan)	1,014																
36-19	SLLP (H. Huaylla)	1,014																
36-	To be determined	280,000																
31-99	Sub Total	450,424						18,611		28,277		33,238		32,852		25,488		24,858
33	Group training																	
33-01	Tuition fee MEMOTEC PO 50632	25,100						25,100										
33-02	Tuition fee VIASAT PO 50661	9,950						9,950										
33-97	Simultaneous interpretation	44,060																
33-98	Previous years adjustments	6,444								2,276		806				7,905		488
	Other charges	5,170														1,020		4,150
33-99	Sub-total	90,724						35,050		2,276		806		0		8,925		4,638
37	Insurance																	
37-98	Professional liability insurance	3,215				3,014		201										
37-99	Sub-total	3,215				3,014		201		0		0		0		0		0
39	Component total	544,363				3,014		53,862		30,553		34,044		32,852		34,413		29,496
40	EQUIPMENT																	
	Reimbursement RLA/98/019 (Customs)	-12,752				-12,752												
45-01	Equipment + Spare parts																	
	SAM REDDIG Spare parts	241,712						45,930		17,750		6,889		17,957		102,072		8,218
	REDDIG II Spare parts	120,000																
	SAEZ	3,377											2,458		919			
	SLLP	6,297										3,194	3,103		0			
	SBRF-SBMN-SBCT	20,464						6,490		13,824		150						
	SCEL	3,498						3,009		1,603		-1,494				380		
	SKED	20,254								84		14,466		3,207		2,498		
	SEGU	7,260						1,870		2,390		2,620				380		
	SOCA	240														240		
	SYGC	1,871										268		1,603		0		
	SGAS	8,363								660		5,467		2,236				
	SPIM	0																
	SMPM	1,350										1,350						
	TTZP	3,503												1,723		1,780		

PROJECT BUDGET

(in US dollars)

Country: Regional for South America
 Project: RLA/03/901/Q
 Title: REDDIG Management System and Satellite Segment Administration

Starting date: 1 July 2003
 Termination date: 31 December 2018

10-Jul-12

	TOTAL	*-----	2003	*-----	2004	*-----	2005	*-----	2006	*-----	2007	*-----	2008	*-----	2009	*-----	2010	
	USD	M/M	USD	M/M	USD	M/M	USD	M/M	USD	M/M	USD	M/M	USD	M/M	USD	M/M	USD	
SUMU	37,741										36,031		1,710					
SVMI	5,179						2,242				2,697				240			
Sub Total	468,357		0		-12,752		59,541		36,311		71,637		33,997		108,509		8,218	
45-02	Equipment for the REDDIG Office	26,169		82													351	
	Laptop REDDIG	3,965					1,829											
	LINDY COMPU PO 50534 SBMN	254					254											
Sub Total	30,388		82		0		2,083		-30		0		0		0		351	
45-03	Operation/maintenance of office equipment	17,401				1,716											1,676	
	PO 50522 VIASAT Modem SYGC repair	1,603					1,603											
	CB LIMA	179					179											
45-04	Transfer of NCC from SPIM to SBMN																	
	P.O. 040694 VIASAT	8,250				8,250												
	P.O. 040687 MEMOTEC	4,250				4,250												
45-05	Extension of contract SEEE (P.O. 40489)	50,000				50,000												
45-06	Backup network SEEE (P.O. 04090)	24,820				24,820												
45-07	Audit adjustment	0																
45-08	P.O. 40683 Modem SPIM repair	0																
45-09	MEVA-REDDIG interconnection equipment	9,439																
45-10	REDDIG II procurement																	
	SAEZ	281,250																
	SLLP	281,250																
	SBRF-SBMN-SBCT	843,750																
	SCEL	281,250																
	SKED	281,250																
	SEGU	281,250																
	SOCA	281,250																
	SYGC	281,250																
	SGAS	281,250																
	SPIM	281,250																
	SMPM	281,250																
	TTZP	281,250																
	SUMU	281,250																
	SVMI	281,250																
45-98	Professional liability insurance	23,963				444		284		246			130		1,109		1,250	
45-99	Sub-Total	4,639,905		0		89,480		2,066		246		0	130		1,109		2,926	
49	Component total	5,138,650		82		76,728		63,690		36,527		71,637	34,127		109,617		11,495	
50	MISCELLANEOUS																	
53-01	Sundry	149,261		643		4,726		4,475		1,150		8,688		4,632		3,703		14,253
53-02	UNDP charges for services and other	10,278				118		505		337						3,318		
53-99	Sub-Total	159,539		643		4,844		4,980		1,487		8,688		4,632		7,021		14,253

PROJECT BUDGET

(in US dollars)

Country: Regional for South America

Starting date: 1 July 2003

10-Jul-12

Project: RLA/03/901/Q

Termination date: 31 December 2018

Title: REDDIG Management System and Satellite Segment Administration

		TOTAL	*-----	2003	†-----	2004	*-----	2005	*-----	2006	*-----	2007	*-----	2008	*-----	2009	*-----	2010
		USD	M/M	USD	M/M	USD	M/M	USD	M/M	USD	M/M	USD	M/M	USD	M/M	USD	M/M	USD
55	Administrative costs	1,151,058		6,439		28,795		35,817		37,372		34,601		39,503		55,621		33,357
59	Component total	1,310,597		7,082		33,639		40,797		38,859		43,289		44,135		62,642		47,610
99	PROJECT TOTAL	17,469,580		96,108		399,341		534,381		517,027		612,343		567,187		444,309		1,091,093
100	COST SHARING																	
101	Cost Sharing Governments																	
101-01	Argentina	1,415,296		50,363		30,100		37,800		44,800		66,700		80,000		85,063		86,201
101-02	Bolivia	1,038,295		39,563		22,100		28,900		33,600		10,900		43,675		52,460		48,039
101-03	Brazil	3,094,705		123,790		72,900		79,400		111,000		60,800		81,444		118,154		137,644
101-04	Chile	1,001,184		40,013		35,100		36,400		67,000		28,710		29,500		29,500		1,000
101-05	Colombia	1,198,851		24,269		0		162,094		0		150,000		0		7,441		0
101-06	Ecuador	1,003,059		40,913		15,200		25,500		29,100		19,000		40,865		51,589		35,000
101-07	France	985,085		34,763		11,300		20,900		26,400		25,000		45,795		51,371		24,092
101-08	Guyana	897,903		34,313		9,900		19,900		22,900		15,000		35,935		43,009		30,000
101-09	Paraguay	1,007,531		35,363		12,700		21,900		30,700		25,600		46,160		53,262		47,056
101-10	Peru	1,309,296		49,613		28,300		36,500		39,700		40,000		71,372		77,820		78,271
101-11	Suriname	931,480		34,313		7,400		18,500		28,700		18,300		36,412		44,752		30,000
101-12	Uruguay	1,068,079		47,513		16,200		28,800		28,000		77,171		64,003		39,759		30,000
101-13	Venezuela	1,384,668		44,213		15,800		27,200		45,800		38,700		71,774		81,664		88,967
101-14	Interests and adjustments	61,934		1,447		4,765		9,685		16,157		17,065		8,630		1,948		770
101-15	Trinidad and Tobago	890,892		0		0		22,700		22,700		15,500		37,791		48,776		30,000
101-16	COCESNA	181,944																28,400
101-99	Sub-Total	17,470,199		600,449		281,765		576,179		546,557		608,446		693,356		786,568		695,440
109	Component total	17,470,199		600,449		281,765		576,179		546,557		608,446		693,356		786,568		695,440
	BL-99 - BL 109	-620		-504,341		117,576		-41,798		-29,530		3,897		-126,169		-342,259		395,653

PROJECT BUDGET

(in US dollars)

10-Jul-12

	*-----	2011	*-----	2012	*-----	2013	*-----	2014	*-----	2015	*-----	2016	*-----	2017	*-----	2018	
	M/M	USD	M/M	USD	M/M	USD	M/M	USD	M/M	USD	M/M	USD	M/M	USD	M/M	USD	
10	PROJECT PERSONNEL																
11	International Professionals																
11-01	12.0	209,250	12.0	230,000	12.0	240,000	12.0	250,000	12.0	250,000	12.0	250,000	12.0	250,000	12.0	250,000	
11-51																	
11-97		9,200		16,000		16,000		16,000		16,000		16,000		16,000		16,000	
11-99	Sub-Total	218,450		246,000		256,000		266,000		266,000		266,000		266,000		266,000	
13	ADMINISTRATIVE SUPPORT																
13-01	6	19,086	6	23,000	6	25,000	6	27,000	6	27,000	6	27,000	6	27,000	6	27,000	
13-02																	
13-03																	
13-04																	
13-05	4	10,670	4	11,800	4	12,900	4	14,000	4	14,000	4	14,000	4	14,000	4	14,000	
13-06	4	8,931	4	9,800	4	10,780	4		4		4		4		4		
13.99	Sub-Total	14	38,687	14	44,600	14	48,680	14	41,000	10	41,000	10	41,000	10	41,000	10	41,000
15	OFFICIAL TRAVEL																
15-01	Official travel																
15-99	Sub-total	0		0		0		0		0		0		0		0	
16	MISSIONS																
16-01		10,250		25,000		30,000		25,000		25,000		25,000		25,000		25,000	
16-99	Sub-total	10,250		25,000		30,000		25,000		25,000		25,000		25,000		25,000	
17	NATIONAL PROFESSIONALS																
17-01		961															
17-99	Sub-total	961		0		0		0		0		0		0		0	
19	Component total	268,348		315,600		334,680		332,000		332,000		332,000		332,000		332,000	
20	SUBCONTRACTS																
21-01	Rental of satellite segment (P.O. 40670) P.O. 30473 (1 Oct 2003 to 31 Dec 2003) P.O. 40670 (1 Jan 2005 to 31 Dec 2008) Rental 2009-2011 Rental 2012-2014 Rental 2015-2018																
				462,528		231,264		250,000		250,000		250,000		250,000		250,000	
21-02	Network Access	32,831		33,132		33,132		33,132		33,132		33,132		33,132		33,132	
21-03	MEVA/REDDIG Recurrent Brazil			2,940		2,940		2,940		2,940		2,940		2,940		2,940	
21-04	MEVA/REDDIG Recurrent Caracas			10,128		10,128		10,128		10,128		10,128		10,128		10,128	
21-05	MEVA/REDDIG Recurrent Bogota			10,020		10,020		10,020		10,020		10,020		10,020		10,020	
21-06	MEVA/REDDIG Recurrent Lima			2,940		2,940		2,940		2,940		2,940		2,940		2,940	
21-07	MEVA/REDDIG Non Recurrent																

PROJECT BUDGET

(in US dollars)

10-Jul-12

	*-----	2011	*-----	2012	*-----	2013	*-----	2014	*-----	2015	*-----	2016	*-----	2017	*-----	2018
	M/M	USD	M/M	USD	M/M	USD	M/M	USD	M/M	USD	M/M	USD	M/M	USD	M/M	USD
Terrestrial service SAEZ								30,000		30,000		30,000		30,000		30,000
Terrestrial service SLLP								30,000		30,000		30,000		30,000		30,000
Terrestrial service SBCT								30,000		30,000		30,000		30,000		30,000
Terrestrial service SBMN								30,000		30,000		30,000		30,000		30,000
Terrestrial service SBRF								30,000		30,000		30,000		30,000		30,000
Terrestrial service SCEL								30,000		30,000		30,000		30,000		30,000
Terrestrial service SKED								30,000		30,000		30,000		30,000		30,000
Terrestrial service SEGU								30,000		30,000		30,000		30,000		30,000
Terrestrial service SOCA								30,000		30,000		30,000		30,000		30,000
Terrestrial service SYGC								30,000		30,000		30,000		30,000		30,000
Terrestrial service SGAS								30,000		30,000		30,000		30,000		30,000
Terrestrial service SPIM								30,000		30,000		30,000		30,000		30,000
Terrestrial service SMPM								30,000		30,000		30,000		30,000		30,000
Terrestrial service TTZP								30,000		30,000		30,000		30,000		30,000
Terrestrial service SUMU								30,000		30,000		30,000		30,000		30,000
Terrestrial service SVMI								30,000		30,000		30,000		30,000		30,000
21-98 Professional liability insurance				5,000		5,000		5,000		5,000		5,000		5,000		5,000
29 Component total		32,831		526,688		295,424		794,160		794,160		794,160		794,160		544,160
30 TRAINING																
31 Individual fellowships																
31-01 SAEZ (Vittor)																
31-02 SCEL (Vergara)																
31-03 SEGU (Avellán)																
31-04 SEGU (Tapia)																
31-05 SOCA (Burtin)																
31-06 SYGC (Salisbury)																
31-07 SMPM (Maharban)																
31-08 SMPM (Martosoewito)																
31-09 SVMI (Correa)																
31-10 SOCA (Berton)																
31-11 SVMI (Padrón)																
31-12 SAEZ (Schenk)																
31-13 SBMN (Mello)																
31-14 SGAS (Torres)																
31-15 SGAS (Pereira)																
31-16 SUMU (Vera)																
31-17 SUMU (Pelayo)																
31-18 SLLP (Balderrama)																
31-19 SLLP (Tito)																
31-20 SVMI (Castillo)																
31-21 SYGC (Mortimer)																
31-22 SYGC (Stanley)																
31-23 SMPM (Rabindre)																
31-24 SMPM (Wakidi)																
31-25 SAEZ (Vittor)																

PROJECT BUDGET

(in US dollars)

10-Jul-12

	*-----	2011	*-----	2012	*-----	2013	*-----	2014	*-----	2015	*-----	2016	*-----	2017	*-----	2018
	M/M	USD	M/M	USD	M/M	USD	M/M	USD	M/M	USD	M/M	USD	M/M	USD	M/M	USD
31-26																
31-27																
31-28																
31-29																
31-30																
31-31																
31-32																
31-33																
31-34																
31-35																
31-36																
31-37																
31-38																
31-39																
31-40																
31-41																
31-42																
31-43																
31-44																
31-45																
31-46																
31-47																
31-48																
31-49																
31-50																
31-51																
31-52																
31-53																
31-54																
31-55																
31-56																
31-57																
31-58																
31-59																
31-60																
31-61																
31-62																
31-63																
31-64																
31-65																
31-66																
31-67																
31-68																
31-69																

PROJECT BUDGET

(in US dollars)

10-Jul-12

		*-----	2011	*-----	2012	*-----	2013	*-----	2014	*-----	2015	*-----	2016	*-----	2017	*-----	2018
		M/M	USD	M/M	USD	M/M	USD	M/M	USD	M/M	USD	M/M	USD	M/M	USD	M/M	USD
31-70	SGAS (V. Morán)																
31-71	SUMU (I. Espalter)																
31-72	SUMU (E. Diaz)																
31-73	SPIM (S. Velásquez)																
31-74	SPIM (J. Wilson)																
31-75	SAEZ (C. Adragna)																
31-76	SAEZ (J. Vittor)																
31-77	SAEZ (M. Moreno)																
31-78	SGAS (A. Pereira)																
31-79	SGAS (V. Morán)																
31-80	SGAS (G. Baez)																
31-81	SPIM (J. García)																
31-82	SPIM (J. Salazar)																
31-83	SPIM (R. Peralta)																
31-84	SKED (N. Torres)																
31-85	SKED (G. Guzmán)																
31-86	SLLP (H. Balderrama)																
31-87	SLLP (P. Huayllas)																
31-88	SUMU (M. Vera)																
31-89	SUMU (E. Diaz)																
31-90	SYGC (M. Salisbury)																
31-91	SYGC (S. Jackson)																
31-92	SOCA (G. Marland)																
31-93	SEGU (A. Cepeda)																
31-94	SEGU (W. Quinde)																
34-03	TTZP (R. Halliday)																
34-04	TTZP (S. Saroop)																
31-95	SMPM (R. Maharban)																
31-96	SMPM (R. Lansdorf)																
31-97	SAEZ (C. Adragna)																
31-98	SAEZ (H. Canna)																
31-99	SUMU (W. Pelayo)																
36-01	SUMU (R. Facal)																
36-02	SVMI (A. Arias)																
36-03	SVMI (L. Escobar)																
36-04	SGAS (J. Estigarribia)																
36-05	SGAS (O. Pereira)																
36-06	SYGC (M. Salisbury)																
36-08	SEGU (B. Iglesias)																
36-09	SEGU (E. Cepeda)																
36-10	SCEL (C. Vergara)																
36-11	SKED (D. Rodríguez)																
31-88	SUMU (M. Vera)																
34-05	TTZP (S. Gopaul)																

PROJECT BUDGET

(in US dollars)

10-Jul-12

	*----- M/M	2011 USD	*----- M/M	2012 USD	*----- M/M	2013 USD	*----- M/M	2014 USD	*----- M/M	2015 USD	*----- M/M	2016 USD	*----- M/M	2017 USD	*----- M/M	2018 USD
SUMU																
SVMI																
Sub Total		2,896		20,000		20,000		0		0		30,000		40,000		50,000
45-02 Equipment for the REDDIG Office		1,266		3,500		3,500		3,500		3,500		3,500		3,500		3,500
Laptop REDDIG		2,136														
LINDY COMPU PO 50534 SBMN																
Sub Total		3,402		3,500		3,500		3,500		3,500		3,500		3,500		3,500
45-03 Operación/mantenimiento equipo de Oficina		2,009				2,000		2,000		2,000		2,000		2,000		2,000
PO 50522 VIASAT Reparación Modem SYGC																
CB LIMA																
45-04 Transfer of NCC from SPIM to SBMN																
P.O. 040694 VIASAT																
P.O. 040687 MEMOTEC																
45-05 Extension of contract SEEE (P.O. 40489)																
45-06 Backup network SEEE (P.O. 04090)																
45-07 Audit adjustment																
45-08 P.O. 40683 Modem SPIM repair																
45-09 MEVA-REDDIG interconnection equipment		9,439														
45-10 REDDIG II procurement																
SAEZ				281,250												
SLLP				281,250												
SBRF-SBMN-SBCT				843,750												
SCEL						281,250										
SKED				281,250												
SEGU				281,250												
SOCA				281,250												
SYGC				281,250												
SGAS				281,250												
SPIM				281,250												
SMPM				281,250												
TTZP				281,250												
SUMU				281,250												
SVMI				281,250												
45-98 Professional liability insurance				20,500												
45-99 Sub-Total		11,448		4,239,250		283,250		2,000		2,000		2,000		2,000		2,000
49 Component total		17,746		4,262,750		306,750		5,500		5,500		35,500		45,500		55,500
50 MISCELLANEOUS																
53-01 Sundry		13,351		11,900		12,700		13,808		13,808		13,808		13,808		13,808
53-02 UNDP charges for services and other				700		800		900		900		900		900		900
53-99 Sub-Total		13,351		12,600		13,500		14,708		14,708		14,708		14,708		14,708

PROJECT BUDGET

(in US dollars)

10-Jul-12

	*-----	2011	*-----	2012	*-----	2013	*-----	2014	*-----	2015	*-----	2016	*-----	2017	*-----	2018
	M/M	USD	M/M	USD	M/M	USD	M/M	USD	M/M	USD	M/M	USD	M/M	USD	M/M	USD
55	Administrative costs	36,539		486,817		82,593		52,321		52,321		55,321		56,321		57,321
59	Component total	49,890		499,417		96,093		67,029		67,029		70,029		71,029		72,029
99	PROJECT TOTAL	373,945		5,649,455		1,078,947		1,244,689		1,244,689		1,277,689		1,288,689		1,049,689
100	COST SHARING															
101	Cost Sharing Governments															
101-01	Argentina	82,500		363,218		88,196		100,098		100,098		102,455		67,728		29,976
101-02	Bolivia	43,924		324,355		62,820		72,810		72,810		75,168		75,953		31,217
101-03	Brazil	148,003		993,893		188,239		221,709		221,709		224,066		224,852		87,103
101-04	Chile	45,000		44,791		339,474		67,869		67,869		70,226		71,012		27,721
101-05	Colombia	67,201		346,822		76,077		86,311		86,311		88,668		89,454		14,202
101-06	Ecuador	35,000		328,951		60,342		70,146		70,146		72,503		73,289		35,514
101-07	France	42,203		323,622		60,102		69,888		69,888		72,246		73,031		34,483
101-08	Guyana	30,000		314,398		53,389		62,669		62,669		65,026		65,812		32,982
101-09	Paraguay	40,162		323,073		59,703		69,459		69,459		71,816		72,602		28,518
101-10	Peru	77,000		349,287		83,223		94,529		94,529		96,886		62,288		29,977
101-11	Suriname	30,000		318,461		56,346		65,849		65,849		68,206		68,992		39,400
101-12	Uruguay	30,000		325,269		61,301		71,178		71,178		73,535		74,320		29,853
101-13	Venezuela	80,000		368,283		95,367		107,046		107,046		109,403		73,429		29,977
101-14	Interests and adjustments	847		620		0		0		0		0		0		0
101-15	Trinidad and Tobago	30,000		318,571		56,426		65,935		65,935		68,292		69,078		39,188
101-16	COCESNA	19,193		19,193		19,193		19,193		19,193		19,193		19,193		19,193
101-99	Sub-Total	801,032		5,062,807		1,360,197		1,244,689		1,244,689		1,277,689		1,181,033		509,304
109	Component total	801,032		5,062,807		1,360,197		1,244,689		1,244,689		1,277,689		1,181,033		509,304
	BL-99 - BL 109	-427,088		586,648		-281,250		0		0		0		107,656		540,385
		-954,058		-367,410		-648,660		-648,660		-648,660		-648,660		-541,004		-620

PAYMENT SCHEDULE

(in US dollars)

10-Jul-12

Country: Regional for South America
 Project: RLA/03/901/Q
 Title: REDDIG Management System and Satellite Segment Administration

100.- **COST SHARING**

101	States	Contributions		Deposits		Pending balance
		Date	Amount	Date	Amount	
101-01	Argentina	1-Jul-2003	50,363	08.07.2003	50,329	34
		1-Jul-2004	30,100	07.06.2004	21,180	8,954
				25.06.2004	10,298	-1,344
				30.11.2004	2,753	-4,097
		1-Jul-2005	37,800	12.07.2005	2,453	31,250
				12.07.2005	33,670	-2,420
		1-Jul-2006	44,800	16.05.2006	46,800	-4,420
		1-Jul-2007	66,700	15.03.2007	65,423	-3,143
		1-Jul-2008	80,000	01.04.2008	41,541	35,316
				02.09.2008	36,119	-803
		1-Jul-2009	85,063	23.03.2009	76,857	7,403
				01.06.2009	8,702	-1,299
		1-Jul-2010	86,201		0	84,902
		1-Jul-2011	82,500	09.11.2011	82,500	84,902
				17.11.2011	84,902	0
		1-Jul-2012	363,218			363,218
		1-Jul-2013	88,196		0	
		1-Jul-2014	100,098		0	
		1-Jul-2015	100,098		0	
1-Jul-2016	102,455		0			
1-Jul-2017	67,728		0			
1-Jul-2018	29,976		0			
		1,415,296		563,527	851,769	
101-02	Bolivia	1-Jul-2003	39,563		0	39,563
		1-Jul-2004	22,100	06.10.2004	22,090	39,573
		1-Jul-2005	28,900	30.06.2005	11,401	57,072
				10.08.2005	11,411	45,661
				28.11.2005	11,410	34,251
				09.12.2005	11,410	22,841
		1-Jul-2006	33,600	21.06.2006	22,821	33,620
				29.12.2006	33,600	20
		1-Jul-2007	10,900			10,920
		1-Jul-2008	43,675	16.06.2008	10,920	43,675
				29.12.2008	43,675	0
		1-Jul-2009	52,460	09.12.2009	52,460	0
		1-Jul-2010	48,039	21.07.2010	48,039	0
		1-Jul-2011	43,924	19.04.2011	43,924	0
		1-Jul-2012	324,355	17.04.2012	43,105	281,250
		1-Jul-2013	62,820			
		1-Jul-2014	72,810			
		1-Jul-2015	72,810			
		1-Jul-2016	75,168			
1-Jul-2017	75,953					
1-Jul-2018	31,217					
		1,038,295		366,266	672,029	

101	States	Contributions		Deposits		Pending balance
		Date	Amount	Date	Amount	
101-03	Brazil	1-Jul-2003	123,790	11.06.2003	123,780	10
		1-Jul-2004	72,900	24.03.2004	5,064	67,846
				30.06.2004	72,890	-5,044
		1-Jul-2005	79,400	28.07.2005	74,346	10
		1-Jul-2006	111,000	06.12.2006	113,775	-2,765
		1-Jul-2007	60,800	16.08.2007	58,035	0
		1-Jul-2008	81,444	18.06.2008	81,444	0
		1-Jul-2009	118,154	24.04.2009	118,039	115
		1-Jul-2010	137,644	07.06.2010	142,700	-4,941
		1-Jul-2011	148,003	30.06.2011	148,003	-4,941
		1-Jul-2012	993,893	09.07.2012	993,893	-4,941
		1-Jul-2013	188,239			
		1-Jul-2014	221,709			
		1-Jul-2015	221,709			
		1-Jul-2016	224,066			
		1-Jul-2017	224,852			
		1-Jul-2018	87,103			
				3,094,705		1,931,969
101-04	Chile	1-Jul-2003	40,013	17.06.2003	40,003	10
		1-Jul-2004	35,100	06.07.2004	48,140	-13,030
				26.08.2004	30,990	-44,020
				30.11.2004	936	-44,956
		1-Jul-2005	36,400	10.06.2005	26,734	-35,290
				29.06.2005	49,990	-85,280
		1-Jul-2006	67,000	22.09.2006	10,430	-28,710
		1-Jul-2007	28,710		0	0
		1-Jul-2008	29,500	15.07.2008	29,500	0
		1-Jul-2009	29,500	22.05.2009	29,500	0
		1-Jul-2010	1,000	13.05.2010	1,000	0
		1-Jul-2011	45,000	30.06.2011	45,000	0
		1-Jul-2012	44,791	03.05.2012	44,791	0
		1-Jul-2013	339,474			
		1-Jul-2014	67,869			
		1-Jul-2015	67,869			
		1-Jul-2016	70,226			
		1-Jul-2017	71,012			
1-Jul-2018	27,721					
		1,001,184		357,014	644,170	
101-05	Colombia	1-Jul-2003	24,269	09.10.2003	24,269	0
		1-Jul-2004	0		0	0
		1-Jul-2005	162,094	22.12.2005	162,094	0
		1-Jul-2006	0		0	0
		1-Jul-2007	150,000			150,000
		1-Jul-2008	0	30.01.2008	150,000	0
		1-Jul-2009	7,441	21.07.2009	7,441	0
		1-Jul-2010	0		0	0
		1-Jul-2011	67,201	05.05.2011	67,201	0
		1-Jul-2012	346,822	13.07.2012	412,394	-65,572
		1-Jul-2013	76,077			
		1-Jul-2014	86,311			
		1-Jul-2015	86,311			
		1-Jul-2016	88,668			
		1-Jul-2017	89,454			
1-Jul-2018	14,202					
		1,198,851		823,399	375,452	

101	States	Contributions		Deposits		Pending balance	
		Date	Amount	Date	Amount		
101-06	Ecuador	1-Jul-2003	40,913	08.07.2003	40,903	10	
		1-Jul-2004	15,200	01.06.2004	19,559	-4,349	
		1-Jul-2005	25,500	23.08.2005	21,151	0	
		1-Jul-2006	29,100	06.07.2006	29,100	0	
		1-Jul-2007	19,000	10.08.2007	19,000	0	
		1-Jul-2008	40,865	07.08.2008	40,865	0	
		1-Jul-2009	51,589	22.06.2009	51,589	0	
		1-Jul-2010	35,000	07.07.2010	35,000	0	
		1-Jul-2011	35,000	29.07.2011	35,000	0	
		1-Jul-2012	328,951	09.07.2012	328,951	0	
		1-Jul-2013	60,342				
		1-Jul-2014	70,146				
		1-Jul-2015	70,146				
		1-Jul-2016	72,503				
		1-Jul-2017	73,289				
		1-Jul-2018	35,514				
				1,003,059		621,118	381,941
		101-07	France	1-Jul-2003	34,763	05.11.2003	33,941
1-Jul-2004	11,300			02.11.2004	12,112	10	
1-Jul-2005	20,900			01.08.2005	20,910	0	
1-Jul-2006	26,400			17.07.2006	26,400	0	
1-Jul-2007	25,000			20.12.2007	25,000	0	
1-Jul-2008	45,795			11.12.2008	45,795	0	
1-Jul-2009	51,371			06.07.2009	51,371	0	
1-Jul-2010	24,092			16.06.2010	24,092	0	
1-Jul-2011	42,203			20.12.2011	42,178	25	
1-Jul-2012	323,622				0	323,647	
1-Jul-2013	60,102						
1-Jul-2014	69,888						
1-Jul-2015	69,888						
1-Jul-2016	72,246						
1-Jul-2017	73,031						
1-Jul-2018	34,483						
				985,085		281,799	703,286
101-08	Guyana			1-Jul-2003	34,313		0
		1-Jul-2004	9,900	29.07.2004	44,203	10	
		1-Jul-2005	19,900	06.12.2005	10,006	9,904	
		1-Jul-2006	22,900	17.07.2006	10,278	22,526	
		1-Jul-2007	15,000	26.07.2007	12,480	25,046	
				28.12.2007	15,374	9,672	
		1-Jul-2008	35,935	25.03.2008	18,335	27,272	
				07.11.2008	17,043	10,229	
		1-Jul-2009	43,009	12.06.2009	29,119	24,119	
		1-Jul-2010	30,000	31.12.2009	13,890	40,229	
				29.06.2010	29,980	10,249	
		1-Jul-2011	30,000	27.06.2011	30,000	10,249	
		1-Jul-2012	314,398	30.12.2011	33,148	291,499	
		1-Jul-2013	53,389				
		1-Jul-2014	62,669				
		1-Jul-2015	62,669				
		1-Jul-2016	65,026				
		1-Jul-2017	65,812				
1-Jul-2018	32,982						
		897,903		263,856	634,047		

101	States	Contributions		Deposits		Pending balance
		Date	Amount	Date	Amount	
101-09	Paraguay	1-Jul-2003	35,363	06.10.2003	42,550	-7,187
		1-Jul-2004	12,700	07.06.2004	5,503	10
		1-Jul-2005	21,900	12.07.2005	18,700	3,210
				12.12.2005	3,210	0
		1-Jul-2006	30,700	17.05.2006	30,700	0
		1-Jul-2007	25,600	13.09.2007	25,600	0
		1-Jul-2008	46,160	25.07.2008	46,160	0
		1-Jul-2009	53,262	29.07.2009	53,262	0
		1-Jul-2010	47,056			47,056
		1-Jul-2011	40,162	24.01.2011	47,021	40,197
				02.11.2011	40,127	70
		1-Jul-2012	323,073			323,143
		1-Jul-2013	59,703			
		1-Jul-2014	69,459			
		1-Jul-2015	69,459			
		1-Jul-2016	71,816			
		1-Jul-2017	72,602			
		1-Jul-2018	28,518			
				1,007,531	312,833	694,698
101-10	Peru	1-Jul-2003	49,613	21.11.2003	49,603	10
		1-Jul-2004	28,300	23.07.2004	28,290	20
				30.11.2004	1,370	-1,350
		1-Jul-2005	36,500	23.06.2005	35,140	10
		1-Jul-2006	39,700	27.06.2006	39,700	10
		1-Jul-2007	40,000	27.05.2007	40,010	0
		1-Jul-2008	71,372	07.07.2008	71,372	0
		1-Jul-2009	77,820	10.07.2009	77,820	0
		1-Jul-2010	78,271	02.07.2010	78,271	0
		1-Jul-2011	77,000	18.08.2011	77,000	0
		1-Jul-2012	349,287	18.05.2012	68,037	281,250
		1-Jul-2013	83,223			
		1-Jul-2014	94,529			
		1-Jul-2015	94,529			
		1-Jul-2016	96,886			
		1-Jul-2017	62,288			
		1-Jul-2018	29,977			
				1,309,296	566,613	742,683
		101-11	Suriname	1-Jul-2003	34,313	
1-Jul-2004	7,400			11.06.2004	34,303	7,410
				07.07.2004	7,390	20
1-Jul-2005	18,500			30.08.2005	18,505	15
1-Jul-2006	28,700				0	28,715
1-Jul-2007	18,300				0	47,015
1-Jul-2008	36,412			15.02.2008	14,335	69,092
				03.03.2008	14,335	54,757
1-Jul-2009	44,752			20.10.2009	18,330	81,179
1-Jul-2010	30,000					111,179
1-Jul-2011	30,000			24.01.2011	111,164	30,015
1-Jul-2012	318,461				0	348,476
1-Jul-2013	56,346					
1-Jul-2014	65,849					
1-Jul-2015	65,849					
1-Jul-2016	68,206					
1-Jul-2017	68,992					
1-Jul-2018	39,400					
				931,480	218,362	713,118

101	States	Contributions		Deposits		Pending balance	
		Date	Amount	Date	Amount		
101-12	Uruguay	1-Jul-2003	47,513	30.07.2003	47,478	35	
		1-Jul-2004	16,200	17.09.2004	16,166	69	
		1-Jul-2005	28,800	08.07.2005	28,854	15	
		1-Jul-2006	28,000	14.07.2006	27,985	30	
		1-Jul-2007	77,171	18.07.2007	22,985	54,216	
				24.09.2007	54,171	45	
		1-Jul-2008	64,003	07.08.2008	52,871	11,177	
		1-Jul-2009	39,759	24.07.2009	39,729	11,207	
		1-Jul-2010	30,000	03.08.2010	29,970	11,237	
		1-Jul-2011	30,000	18.07.2011	29,971	11,266	
		1-Jul-2012	325,269	18.06.2012	281,221	55,314	
		1-Jul-2013	61,301			116,615	
		1-Jul-2014	71,178			187,793	
		1-Jul-2015	71,178				
		1-Jul-2016	73,535				
		1-Jul-2017	74,320				
		1-Jul-2018	29,853				
				1,068,079		631,401	436,678
101-13	Venezuela	1-Jul-2003	44,213	22.07.2003	44,203	10	
		1-Jul-2004	15,800	23.06.2004	15,790	20	
		1-Jul-2005	27,200	18.03.2005	27,220	0	
		1-Jul-2006	45,800	24.04.2006	45,800	0	
		1-Jul-2007	38,700	09.08.2007	38,700	0	
		1-Jul-2008	71,774	03.12.2008	71,774	0	
		1-Jul-2009	81,664	09.11.2009	81,664	0	
		1-Jul-2010	88,967	07.06.2010	88,967	0	
		1-Jul-2011	80,000	04.10.2011	80,000	0	
		1-Jul-2012	368,283		0	368,283	
		1-Jul-2013	95,367				
		1-Jul-2014	107,046				
		1-Jul-2015	107,046				
		1-Jul-2016	109,403				
		1-Jul-2017	73,429				
		1-Jul-2018	29,977				
		1,384,668		494,118	890,550		
101-14	Interests	31-Dec-2003	1,447		1,447		
		31-Dec-2004	4,765		4,765		
		31-Dec-2005	9,685		9,685		
		31-Dec-2006	16,157		16,157		
		31-Dec-2007	17,065		17,065		
		31-Dec-2008	8,630		8,630		
		31-Dec-2009	2,023				
		Loose in change	31-Dec-2009	-80			
		Gain in change	31-Dec-2009	5		1,948	
		Interests	31-Dec-2010	785			
		Loose in change	31-Dec-2010	-18			
		Gain in change	31-Dec-2010	3		770	
		Interests	31-Dec-2011	468			
		Gain in change	31-Dec-2011	379		847	
		Interests	30-Jun-2012	658			
		Adjustments	30-Jun-2012	-38		620	
			31-Dec-2013	0		0	
			31-Dec-2014	0		0	
			31-Dec-2015	0		0	
			31-Dec-2016	0		0	
	31-Dec-2017	0		0			
	31-Dec-2018	0		0			
	Sub Total	61,934		61,934			

101	States	Contributions		Deposits		Pending balance		
		Date	Amount	Date	Amount			
101-15	Trinidad and Tobago	1-Jul-2003	0					
		1-Jul-2004	0					
		1-Jul-2005	22,700	12.08.2005	40,110	-17,410		
		1-Jul-2006	22,700	13.09.2006	5,274	16		
		1-Jul-2007	15,500	30.08.2007	15,500	16		
		1-Jul-2008	37,791	24.11.2008	37,787	20		
		1-Jul-2009	48,776	16.07.2009	48,776	20		
		1-Jul-2010	30,000	28.05.2010	29,980	40		
		1-Jul-2011	30,000	18.04.2011	24,980	5,060		
		1-Jul-2012	318,571	16.03.2012	37,301	286,330		
		1-Jul-2013	56,426					
		1-Jul-2014	65,935					
		1-Jul-2015	65,935					
		1-Jul-2016	68,292					
		1-Jul-2017	69,078					
		1-Jul-2018	39,188					
				890,892		239,708	651,184	
		101-16	COCESNA	1-Jul-2003	0			
				1-Jul-2004	0			
1-Jul-2005	0							
1-Jul-2006	0							
1-Jul-2007	0							
1-Jul-2008	0							
1-Jul-2009	0				0	0		
1-Jul-2010	28,400				0	28,400		
1-Jul-2011	19,193			27.09.2011	19,175	28,418		
				18.11.2011	45,970	-17,552		
1-Jul-2012	19,193				0	1,641		
1-Jul-2013	19,193							
1-Jul-2014	19,193							
1-Jul-2015	19,193							
1-Jul-2016	19,193							
1-Jul-2017	19,193							
1-Jul-2018	19,193							
		181,944		65,145	116,799			
TOTALS		17,470,199		7,799,062	9,671,137			

REGISTRY OF PAYMENTS OF COST-SHARING CONTRIBUTIONS

Country: Regional for South America
 Project: RLA/03/901/Q
 Title: REDDIG Management System and Satellite Segment Administration

10-Jul-12

STATE	2003		2004		2005		2006		2007		2008		2009		2010		2011	
	Contrib. Due	Contrib. Received	Contrib. Due	Contrib. Received	Contrib. Due	Contrib. Received	Contrib. Due	Contrib. Received	Contrib. Due	Contrib. Received	Contrib. Due	Contrib. Received	Contrib. Due	Contrib. Received	Contrib. Due	Contrib. Received	Contrib. Due	Contrib. Received
Dates	1-Jul-03		1-Jul-04		1-Jul-05		1-Jul-06		1-Jul-07		1-Jul-08		1-Jul-09		1-Jul-10		1-Jul-11	
ARG	50,363	50,329	30,100	34,231	37,800	36,123	44,800	46,800	66,700	65,423	80,000	77,660	85,063	85,559	86,201	0	82,500	167,402
BOL	39,563		22,100	22,090	28,900	45,632	33,600	56,421	10,900	0	43,675	54,595	52,460	52,460	48,039	48,039	43,924	43,924
BRA	123,790	123,780	72,900	77,954	79,400	74,346	111,000	113,775	60,800	58,035	81,444	81,444	118,154	118,039	137,644	142,700	148,003	148,003
CHI	40,013	40,003	35,100	80,066	36,400	76,724	67,000	10,430	28,710	0	29,500	29,500	29,500	29,500	1,000	1,000	45,000	45,000
COL	24,269	24,269	0	0	162,094	162,094	0	0	150,000	0	0	150,000	7,441	7,441	0	0	67,201	67,201
ECU	40,913	40,903	15,200	19,559	25,500	21,151	29,100	29,100	19,000	19,000	40,865	40,865	51,589	51,589	35,000	35,000	35,000	35,000
FRA	34,763	33,941	11,300	12,112	20,900	20,910	26,400	26,400	25,000	25,000	45,795	45,795	51,371	51,371	24,092	24,092	42,203	42,178
GUY	34,313	0	9,900	44,203	19,900	10,006	22,900	10,278	15,000	27,854	35,935	35,378	43,009	29,119	30,000	43,870	30,000	30,000
PAR	35,363	42,550	12,700	5,503	21,900	21,910	30,700	30,700	25,600	25,600	46,160	46,160	53,262	53,262	47,056	0	40,162	87,148
PER	49,613	49,603	28,300	29,660	36,500	35,140	39,700	39,700	40,000	40,010	71,372	71,372	77,820	77,820	78,271	78,271	77,000	77,000
SUR	34,313	0	7,400	41,693	18,500	18,505	28,700	0	18,300	0	36,412	28,670	44,752	18,330	30,000	0	30,000	111,164
TRI	0	0	0	0	22,700	40,110	22,700	5,274	15,500	15,500	37,791	37,787	48,776	48,776	30,000	29,980	30,000	24,980
URU	47,513	47,478	16,200	16,166	28,800	28,854	28,000	27,985	77,171	77,156	64,003	52,871	39,759	39,729	30,000	29,970	30,000	29,971
VEN	44,213	44,203	15,800	15,790	27,200	27,220	45,800	45,800	38,700	38,700	71,774	71,774	81,664	81,664	88,967	88,967	80,000	80,000
COCESNA	0	0	0	0	0	0	0	0	0	0	0	0	0	0	28,400	0	19,193	65,145
Sub-totals	599,002	497,059	277,000	399,027	566,494	618,725	530,400	442,663	591,381	392,278	684,726	823,871	784,620	744,659	694,670	521,889	800,185	#####
Interests	1,447	1,447	4,765	4,765	9,685	9,685	16,157	16,157	17,065	17,065	8,630	8,630	1,948	1,948	770	770	847	847
Totals	600,449	498,506	281,765	403,792	576,179	628,410	546,557	458,820	608,446	409,343	693,356	832,501	786,568	746,607	695,440	522,659	801,032	#####

REGISTRY OF PAYMENTS OF COST-SHARING CONTRIBUTIONS

10-Jul-12

STATE	2012		2013		2014		2015		2016		2017		2018		Total		Contrib. Pending
	Contrib. Due	Contrib. Received	Contrib. Due	Contrib. Received	Contrib. Due	Contrib. Received	Contrib. Due	Contrib. Received	Contrib. Due	Contrib. Received	Contrib. Due	Contrib. Received	Contrib. Due	Contrib. Received	Contrib. Due	Contrib. Received	
Dates	1-Jul-12		1-Jul-13		1-Jul-14		1-Jul-15		1-Jul-16		1-Jul-17		1-Jul-18				
ARG	363,218	0	88,196	0	100,098	0	100,098	0	102,455	0	67,728	0	29,976	0	1,415,296	563,527	851,769
BOL	324,355	43,105	62,820	0	72,810	0	72,810	0	75,168	0	75,953	0	31,217	0	1,038,295	366,266	672,029
BRA	993,893	993,893	188,239	0	221,709	0	221,709	0	224,066	0	224,852	0	87,103	0	3,094,705	1,931,969	1,162,736
CHI	44,791	44,791	339,474	0	67,869	0	67,869	0	70,226	0	71,012	0	27,721	0	1,001,184	357,014	644,170
COL	346,822	412,394	76,077	0	86,311	0	86,311	0	88,668	0	89,454	0	14,202	0	1,198,851	823,399	375,452
ECU	328,951	328,951	60,342	0	70,146	0	70,146	0	72,503	0	73,289	0	35,514	0	1,003,059	621,118	381,941
FRA	323,622	0	60,102	0	69,888	0	69,888	0	72,246	0	73,031	0	34,483	0	985,085	281,799	703,286
GUY	314,398	33,148	53,389	0	62,669	0	62,669	0	65,026	0	65,812	0	32,982	0	897,903	263,856	634,047
PAR	323,073	0	59,703	0	69,459	0.00	69,459	0	71,816	0	72,602	0	28,518	0	1,007,531	312,833	694,698
PER	349,287	68,037	83,223	0	94,529	0	94,529	0	96,886	0	62,288	0	29,977	0	1,309,296	566,613	742,683
SUR	318,461	0	56,346	0	65,849	0	65,849	0	68,206	0	68,992	0	39,400	0	931,480	218,362	713,118
TRI	318,571	37,301	56,426	0	65,935	0	65,935	0	68,292	0	69,078	0	39,188	0	890,892	239,708	651,184
URU	325,269	281,221	61,301	0	71,178	0	71,178	0	73,535	0	74,320	0	29,853	0	1,068,079	631,401	436,678
VEN	368,283	0	95,367	0	107,046	0	107,046	0	109,403	0	73,429	0	29,977	0	1,384,668	494,118	890,550
COCESNA	19,193	0	19,193	0	19,193	0	19,193	0	19,193	0	19,193	0	19,193	0	181,944	65,145	116,799
Sub-totals	5,062,187	2,242,841	1,360,197	0	1,244,689	0	1,244,689	0	1,277,689	0	1,181,033	0	509,304	0	17,408,265	7,737,128	9,671,137
Interests	620	620	0	0	0	0	0	0	0	0	0	0	0	0	61,934	61,934	0
Totals	5,062,807	2,243,461	1,360,197	0	1,244,689	0	1,244,689	0	1,277,689	0	1,181,033	0	509,304	0	17,470,199	7,799,062	9,671,137

DISTRIBUTION OF COSTS OF THE SATELLITE SEGMENT
(in US dollars)

Country: Regional for South America
 Project: RLA/03/901/Q
 Title: REDDIG Management System and Satellite Segment Administration

10-Jul-12

	Cost Satellite Segment	AOSC	SRP	Total
2003	62,727	3,764	0	66,491
2004	168,849	8,754	845	178,448
2005	231,264	9,251	1,156	241,671
2006	231,264	5,966	3,469	240,699
2007	231,264	3,469	0	234,733
2008	231,264	10,126	1,156	242,546
2009	0	10,376	1,156	11,532
2010	693,792	12,500	1,810	708,102
2011	0	12,500	0	12,500
2012	462,528	12,500	5,000	480,028
2013	231,264	12,500	5,000	248,764
2014	250,000	12,500	5,000	267,500
2015	250,000	12,500	5,000	267,500
2016	250,000	12,500	5,000	267,500
2017	250,000	12,500	5,000	267,500
2018	0	12,500	5,000	17,500
TOTAL	3,544,216	164,206	44,592	3,753,014

Calculation AOSC Satellite Segment	
First USD 100,000 @ 6%	
First USD 400,000 @ 4%	
Rest at 1.5%	
AOSC 2003	3,764
AOSC 2004	8,754
AOSC 2005	9,251
AOSC 2006	5,966
AOSC 2007	3,469
AOSC 2008	10,126
AOSC 2009	10,376
AOSC 2010	

	2003				2004				2005				
	TOTALS	AOSC	SRP	PAS	TOTAL	AOSC	SRP	PAS	TOTAL	AOSC	SRP	PAS	TOTAL
Argentina	561,111	393		6,549	6,942	923	89	17,794	18,806	1,120	140	27,999	29,259
Bolivia	203,475	217		3,620	3,838	594	57	11,449	12,100	532	67	13,310	13,909
Brazil	370,167	342		5,695	6,037	957	92	18,453	19,502	1,225	153	30,613	31,991
Brazil	231,380	132		2,197	2,328	604	58	11,652	12,314	783	98	19,585	20,466
Brazil	86,259	261		4,353	4,614	436	42	8,410	8,888	143	18	3,565	3,726
Chile	176,354	225		3,742	3,967	872	84	16,819	17,775	671	84	16,780	17,535
Colombia	279,327	383		6,387	6,770	819	79	15,806	16,704	918	115	22,960	23,993
Ecuador	159,995	239		3,987	4,226	468	45	9,017	9,530	333	42	8,319	8,693
France	161,872	139		2,319	2,458	294	28	5,674	5,996	302	38	7,558	7,898
Guyana	61,298	132		2,197	2,328	257	25	4,965	5,247	179	22	4,468	4,669
Paraguay	150,580	149		2,481	2,630	332	32	6,408	6,773	472	59	11,789	12,320
Peru	455,113	381		6,346	6,727	875	84	16,870	17,829	915	114	22,865	23,894
Suriname	100,895	132		2,197	2,328	205	20	3,951	4,176	392	49	9,792	10,233
Trinidad and Tobago	87,426	0		0	0	0	0	0	0	0	0	0	0
Uruguay	186,069	347		5,776	6,123	588	57	11,348	11,993	367	46	9,175	9,587
Venezuela	481,693	293		4,881	5,174	531	51	10,233	10,815	899	112	22,485	23,496
TOTALS	3,753,014	3,764		62,727	66,491	8,754	845	168,849	178,448	9,251	1,156	231,264	241,671

	2006				2007				2008			
	AOSC	SRP	PAS	TOTAL	AOSC	SRP	PAS	TOTAL	AOSC	SRP	PAS	TOTAL
Argentina	869	505	33,672	35,046	496	0	33,038	33,533	1,743	199	39,797	41,739
Bolivia	304	177	11,803	12,284	204	0	13,591	13,795	487	56	11,124	11,667
Brazil	663	385	25,688	26,736	299	0	19,948	20,247	892	102	20,369	21,362
Brazil	309	180	11,976	12,465	210	0	13,968	14,177	483	55	11,020	11,558
Brazil	124	72	4,825	5,022	68	0	4,558	4,627	240	27	5,484	5,751
Chile	599	348	23,224	24,171	220	0	14,637	14,857	382	44	8,722	9,148
Colombia	520	303	20,169	20,992	354	0	23,586	23,940	739	84	16,870	17,692
Ecuador	175	102	6,769	7,045	164	0	10,915	11,079	366	42	8,356	8,764
France	272	158	10,553	10,984	185	0	12,337	12,522	579	66	13,214	13,858
Guyana	74	43	2,881	2,999	45	0	3,011	3,056	153	17	3,499	3,670
Paraguay	248	144	9,616	10,008	103	0	6,858	6,961	336	38	7,677	8,052
Peru	678	394	26,278	27,351	432	0	28,814	29,246	1,464	167	33,426	35,056
Suriname	141	82	5,485	5,709	70	0	4,684	4,754	174	20	3,969	4,163
Trinidad and Tobago	187	109	7,255	7,551	58	0	3,847	3,905	233	27	5,327	5,587
Uruguay	300	174	11,629	12,104	172	0	11,459	11,631	595	68	13,579	14,242
Venezuela	501	292	19,440	20,233	390	0	26,012	26,402	1,262	144	28,830	30,236
TOTALS	5,966	3,469	231,264	240,699	3,469	0	231,264	234,733	10,126	1,156	231,264	242,546

DISTRIBUTION OF COSTS OF THE SATELLITE SEGMENT
(in US dollars)

	2018			
	AOSC	SRP	PAS	TOTAL
Argentina	1,942	777	0	2,718
Bolivia	667	267	0	933
Brazil	1,199	480	0	1,678
Brazil	775	310	0	1,085
Brazil	263	105	0	368
Chile	436	174	0	610
Colombia	829	332	0	1,161
Ecuador	542	217	0	759
France	530	212	0	742
Guyana	193	77	0	270
Paraguay	510	204	0	714
Peru	1,544	618	0	2,162
Suriname	341	137	0	478
Trinidad and Tobago	345	138	0	484
Uruguay	590	236	0	827
Venezuela	1,793	717	0	2,510
	12,500	5,000	0	17,500

COSTS DISTRIBUTION

Country: Regional for South America
 Project: RLA/03/901/Q
 Title: REDDIG Management System and Satellite Segment Administration

10-Jul-12

Node Argentina SAEZ																	
	TOTAL	2003	2004	2005	2006	2007	2008	2009	2010	2011	2012	2013	2014	2015	2016	2017	2018
Number of nodes		15	15	15	16	16	16	16	16	16	16	16	16	16	16	16	16
BL 19	248,850	1,748	7,751	9,574	11,022	14,507	13,978	14,780	14,325	16,772	19,725	20,918	20,750	20,750	20,750	20,750	20,750
BL 21.01 PAS	704,201	6,549	17,794	27,999	33,672	33,038	39,797	0	113,323	2,345	74,216	38,291	71,202	71,202	71,202	71,202	32,367
PLI PAS	6,824	0	89	140	505	0	199	172	281	0	777	777	777	777	777	777	777
BL 21.07	0																
BL 39	52,320	0	201	4,655	2,177	6,372	9,945	3,625	5,405	-123	2,813	2,875	2,875	2,875	2,875	2,875	2,875
BL 49	320,532	5	5,115	3,027	1,758	431	3,748	8,279	792	1,135	266,600	19,350	344	344	2,487	3,201	3,915
BL 50	0																
BL 53.01	9,370	43	315	298	72	543	290	231	891	834	744	794	863	863	863	863	863
BL 53.02	645	0	8	34	21	0	0	207	0	0	44	50	56	56	56	56	56
AOSC 10%	63,278	180	1,339	1,759	1,505	2,185	2,787	2,828	2,141	1,862	28,993	4,399	2,489	2,489	2,703	2,775	2,846
AOSC PAS	24,547	393	923	1,120	869	496	1,743	1,548	1,942	1,922	1,942	1,942	1,942	1,942	1,942	1,942	1,942
Budget node	1,415,296	8,822	33,218	47,960	50,592	56,505	71,948	31,549	137,278	23,495	394,653	88,196	100,098	100,098	102,455	103,240	65,191
Quota established	1,415,296	50,363	30,100	37,800	44,800	66,700	80,000	85,063	86,201	82,500	363,218	88,196	100,098	100,098	102,455	67,728	29,976
Interests+COCESNA	15,270	96	318	646	1,010	1,067	539	122	1,823	1,253	1,200	1,200	1,200	1,200	1,200	1,200	1,200
Difference	0	41,541	-3,118	-10,160	-5,792	10,195	8,052	53,514	-51,077	59,005	-31,435	0	0	0	0	-35,512	-35,214

Node Bolivia SLLP																	
	TOTAL	2003	2004	2005	2006	2007	2008	2009	2010	2011	2012	2013	2014	2015	2016	2017	2018
Number of nodes		15	15	15	16	16	16	16	16	16	16	16	16	16	16	16	16
BL 19	248,850	1,748	7,751	9,574	11,022	14,507	13,978	14,780	14,325	16,772	19,725	20,918	20,750	20,750	20,750	20,750	20,750
BL 21.01 PAS	366,696	3,620	11,449	13,310	11,803	13,591	11,124	0	42,551	2,345	27,035	14,701	45,700	45,700	45,700	45,700	32,367
PLI PAS	2,382	0	57	67	177	0	56	62	97	0	267	267	267	267	267	267	267
BL 39	33,010	0	201	4,350	2,177	2,436	0	2,603	290	891	2,813	2,875	2,875	2,875	2,875	2,875	2,875
BL 49	322,061	5	5,115	3,027	367	3,625	4,394	7,360	792	1,135	266,600	19,350	344	344	2,487	3,201	3,915
BL 50	0																
BL 53.01	9,370	43	315	298	72	543	290	231	891	834	744	794	863	863	863	863	863
BL 53.02	645	0	8	34	21	0	0	207	0	0	44	50	56	56	56	56	56
AOSC 10%	61,694	180	1,339	1,728	1,366	2,111	1,857	2,828	1,630	1,963	28,993	4,399	2,489	2,489	2,703	2,775	2,846
AOSC PAS	8,856	217	594	532	304	204	487	559	667	626	667	667	667	667	667	667	667
Budget node	1,038,295	5,717	26,512	32,274	26,299	35,951	31,646	28,509	59,419	23,314	345,686	62,820	72,810	72,810	75,168	75,953	63,406
Quota established	1,038,295	39,563	22,100	28,900	33,600	10,900	43,675	52,460	48,039	43,924	324,355	62,820	72,810	72,810	75,168	75,953	31,217
Interests + COCESNA	15,270	96	318	646	1,010	1,067	539	122	1,823	1,253	1,200	1,200	1,200	1,200	1,200	1,200	1,200
Difference	0	33,846	-4,412	-3,374	7,301	-25,051	12,029	23,951	-11,380	20,610	-21,331	0	0	0	0	0	-32,188

Node Brazil Curitiba SBCT																	
	TOTAL	2003	2004	2005	2006	2007	2008	2009	2010	2011	2012	2013	2014	2015	2016	2017	2018
Number of nodes		15	15	15	16	16	16	16	16	16	16	16	16	16	16	16	16
BL 19	165,850	1,748	7,751	9,574	11,022	14,507	13,978	14,780	14,325	16,772	19,725	20,918	20,750	20,750	20,750	20,750	20,750
BL 21.01 PAS	331,630	5,695	18,453	30,613	25,688	19,948	20,369	0	72,086	2,345	49,665	27,486	59,282	59,282	59,282	59,282	35,307
PLI PAS	2,460	0	92	153	385	0	102	116	174	0	480	480	480	480	480	480	480
BL 39	12,030	0	201	2,350	142	50	0	558	290	-123	2,813	2,875	2,875	2,875	2,875	2,875	2,875
BL 49	313,463	5	5,115	9,517	1,372	581	1,291	7,360	792	1,135	266,600	19,350	344	344	2,487	3,201	3,915
BL 50	0																
BL 53.01	5,918	43	315	298	72	543	290	231	891	834	744	794	863	863	863	863	863
BL 53.02	420	0	8	34	21	0	0	207	0	0	44	50	56	56	56	56	56
AOSC 10%	50,273	180	1,339	2,177	1,263	1,568	1,547	2,828	1,630	1,862	28,993	4,399	2,489	2,489	2,703	2,775	2,846
AOSC PAS	11,250	342	957	1,225	663	299	892	1,038	1,199	1,039	1,199	1,199	1,199	1,199	1,199	1,199	1,199
Cuota SBCT	893,294	8,013	34,231	55,942	40,629	37,496	38,468	27,118	91,386	23,864	370,261	77,549	88,338	88,338	90,695	91,480	68,290

Node Brazil Manaus SBMN																	
	TOTAL	2003	2004	2005	2006	2007	2008	2009	2010	2011	2012	2013	2014	2015	2016	2017	2018
Number of nodes		15	15	15	16	16	16	16	16	16	16	16	16	16	16	16	16
BL 19	165,850	1,748	7,751	9,574	11,022	14,507	13,978	14,780	14,325	16,772	19,725	20,918	20,750	20,750	20,750	20,750	20,750
BL 21.01 PAS	201,941	2,197	11,652	19,585	11,976	13,968	11,020	0	43,021	0	28,680	14,340	45,502	45,502	45,502	45,502	30,000
PLI PAS	1,500	0	58	98	180	0	55	67	112	0	310	310	310	310	310	310	310
	0																
BL 39	13,451	0	201	3,771	142	50	0	558	290	-123	2,813	2,875	2,875	2,875	2,875	2,875	2,875
BL 49	305,712	5	5,115	3,281	12,232	431	8	69	205	928	265,172	17,922	344	344	344	344	344
BL 50	0																
BL 53.01	5,918	43	315	298	72	543	290	231	891	834	744	794	863	863	863	863	863
BL 53.02	420	0	8	34	21	0	0	207	0	0	44	50	56	56	56	56	56
AOSC 10%	50,369	180	1,339	1,696	2,349	1,553	1,418	2,828	1,571	1,841	28,850	4,256	2,489	2,489	2,489	2,489	2,489
AOSC PAS	7,092	132	604	783	309	210	483	603	775	869	775	775	775	775	775	775	775
Cuota SBMN	752,253	4,304	27,043	39,120	38,303	31,261	27,252	19,344	61,190	21,121	347,112	62,239	73,964	73,964	73,964	73,964	58,462
Node Brazil Recife SBRF																	
	TOTAL	2003	2004	2005	2006	2007	2008	2009	2010	2011	2012	2013	2014	2015	2016	2017	2018
Number of nodes		15	15	15	16	16	16	16	16	16	16	16	16	16	16	16	16
BL 19	248,850	1,748	7,751	9,574	11,022	14,507	13,978	14,780	14,325	16,772	19,725	20,918	20,750	20,750	20,750	20,750	20,750
BL 21.01 PAS	231,440	4,353	8,410	3,565	4,825	4,558	5,484	0	14,600	0	9,734	4,867	35,261	35,261	35,261	35,261	30,000
PLI PAS	959	0	42	18	72	0	27	25	38	0	105	105	105	105	105	105	105
	0																
BL 39	23,530	0	201	2,350	142	50	0	558	290	-123	2,813	2,875	2,875	2,875	2,875	2,875	2,875
BL 49	297,895	5	5,115	3,027	3,294	431	8	69	205	928	265,172	17,922	344	344	344	344	344
BL 50	0																
BL 53.01	9,370	43	315	298	72	543	290	231	891	834	744	794	863	863	863	863	863
BL 53.02	645	0	8	34	21	0	0	207	0	0	44	50	56	56	56	56	56
AOSC 10%	59,263	180	1,339	1,528	1,455	1,553	1,418	2,828	1,571	1,841	28,850	4,256	2,489	2,489	2,489	2,489	2,489
AOSC PAS	3,860	261	436	143	124	68	240	224	263	259	263	263	263	263	263	263	263
Cuota SBRF	875,812	6,589	23,617	20,537	21,028	21,711	21,446	18,923	32,183	20,511	327,448	52,049	63,006	63,006	63,006	63,006	57,745
	0																
Budget nodes Brazil	3,094,705	18,617	83,938	113,662	96,929	87,268	85,547	65,019	179,290	61,739	1,041,223	188,239	221,709	221,709	224,066	224,852	180,899
Quota established	3,094,705	123,790	72,900	79,400	111,000	60,800	81,444	118,154	137,644	148,003	993,893	188,239	221,709	221,709	224,066	224,852	87,103
Interests+COCESNA	45,810	289	953	1,937	3,029	3,200	1,618	365	5,469	3,758	3,599	3,599	3,599	3,599	3,599	3,599	3,599
Difference	0	105,173	-11,038	-34,262	14,071	-26,468	-4,103	53,135	-41,646	86,264	-47,330	0	0	0	0	0	-93,796
Node Chile SCEL																	
	TOTAL	2003	2004	2005	2006	2007	2008	2009	2010	2011	2012	2013	2014	2015	2016	2017	2018
Number of nodes		15	15	15	16	16	16	16	16	16	16	16	16	16	16	16	16
BL 19	248,850	1,748	7,751	9,574	11,022	14,507	13,978	14,780	14,325	16,772	19,725	20,918	20,750	20,750	20,750	20,750	20,750
BL 21.01 PAS	341,614	3,742	16,819	16,780	23,224	14,637	8,722	0	29,734	2,345	18,490	10,428	41,081	41,081	41,081	41,081	32,367
PLI PAS	1,885	0	84	84	348	0	44	42	63	0	174	174	174	174	174	174	174
	0																
BL 39	26,885	0	201	3,208	142	50	0	558	1,772	891	2,813	2,875	2,875	2,875	2,875	2,875	2,875
BL 49	318,953	5	5,115	6,036	1,661	-1,063	1,291	7,740	792	1,135	266,600	19,350	344	344	2,487	3,201	3,915
BL 50	0																
BL 53.01	9,370	43	315	298	72	543	290	231	891	834	744	794	863	863	863	863	863
BL 53.02	645	0	8	34	21	0	0	207	0	0	44	50	56	56	56	56	56
AOSC 10%	60,937	180	1,339	1,915	1,292	1,404	1,547	2,828	1,778	1,963	28,993	4,399	2,489	2,489	2,703	2,775	2,846
AOSC PAS	7,315	225	872	671	599	220	382	375	436	485	436	436	436	436	436	436	436
	0																
Budget node	1,001,184	5,846	32,187	37,955	37,371	29,230	25,713	26,640	47,968	23,173	336,819	58,224	67,869	67,869	70,226	71,012	63,082
Quota established	1,001,184	40,013	35,100	36,400	67,000	28,710	29,500	29,500	1,000	45,000	44,791	339,474	67,869	67,869	70,226	71,012	27,721
Interests + COCESN/	15,270	96	318	646	1,010	1,067	539	122	1,823	1,253	1,200	1,200	1,200	1,200	1,200	1,200	1,200
Difference	0	34,167	2,913	-1,555	29,629	-520	3,787	2,860	-46,968	21,827	-292,028	281,250	0	0	0	0	-35,362

Node Colombia SKED																	
	TOTAL	2003	2004	2005	2006	2007	2008	2009	2010	2011	2012	2013	2014	2015	2016	2017	2018
Number of nodes		15	15	15	16	16	16	16	16	16	16	16	16	16	16	16	16
BL 19	248,850	1,748	7,751	9,574	11,022	14,507	13,978	14,780	14,325	16,772	19,725	20,918	20,750	20,750	20,750	20,750	20,750
BL 21.01 PAS	508,782	6,387	15,806	22,960	20,169	23,586	16,870	0	51,579	2,345	43,073	27,730	58,973	58,973	58,973	58,973	42,387
PLI PAS	3,109	0	79	115	303	0	84	86	120	0	332	332	332	332	332	332	332
	0																
BL 39	30,510	0	201	2,350	3,595	50	0	2,603	1,772	-123	2,813	2,875	2,875	2,875	2,875	2,875	2,875
BL 49	338,028	5	5,115	3,027	2,461	14,896	4,498	9,858	792	1,135	266,600	19,350	344	344	2,487	3,201	3,915
BL 50	0																
BL 53.01	9,370	43	315	298	72	543	290	231	891	834	744	794	863	863	863	863	863
BL 53.02	645	0	8	34	21	0	0	207	0	0	44	50	56	56	56	56	56
AOSC 10%	62,791	180	1,339	1,528	1,717	3,000	1,867	2,828	1,778	1,862	28,993	4,399	2,489	2,489	2,703	2,775	2,846
AOSC PAS	12,034	383	819	918	520	354	739	776	829	892	829	829	829	829	829	829	829
	0																
Budget node	1,198,851	8,649	31,116	40,159	38,869	55,870	37,786	31,247	70,263	22,464	361,953	76,077	86,311	86,311	88,668	89,454	73,653
Quota established	1,198,851	24,269	0	162,094	0	150,000	0	7,441	0	67,201	346,822	76,077	86,311	86,311	88,668	89,454	14,202
Interests+COCESNA	15,270	96	318	646	1,010	1,067	539	122	1,823	1,253	1,200	1,200	1,200	1,200	1,200	1,200	1,200
Difference	0	15,620	-31,116	121,935	-38,869	94,130	-37,786	-23,806	-70,263	44,737	-15,131	0	0	0	0	0	-59,451

Node Ecuador SEGU																	
	TOTAL	2003	2004	2005	2006	2007	2008	2009	2010	2011	2012	2013	2014	2015	2016	2017	2018
Number of nodes		15	15	15	16	16	16	16	16	16	16	16	16	16	16	16	16
BL 19	248,850	1,748	7,751	9,574	11,022	14,507	13,978	14,780	14,325	16,772	19,725	20,918	20,750	20,750	20,750	20,750	20,750
BL 21.01 PAS	325,381	3,987	9,017	8,319	6,769	10,915	8,356	0	35,641	2,345	22,428	12,397	43,210	43,210	43,210	43,210	32,367
PLI PAS	1,885	0	45	42	102	0	42	58	79	0	217	217	217	217	217	217	217
	0																
BL 39	36,176	0	201	4,065	2,117	3,996	0	2,603	3,254	-123	2,813	2,875	2,875	2,875	2,875	2,875	2,875
BL 49	326,425	5	5,115	4,897	6,158	3,050	1,291	7,740	792	1,135	266,600	19,350	344	344	2,487	3,201	3,915
BL 50	0																
BL 53.01	9,370	43	315	298	72	543	290	231	891	834	744	794	863	863	863	863	863
BL 53.02	645	0	8	34	21	0	0	207	0	0	44	50	56	56	56	56	56
AOSC 10%	62,409	180	1,339	1,887	1,939	2,210	1,547	2,828	1,926	1,862	28,993	4,399	2,489	2,489	2,703	2,775	2,846
AOSC PAS	7,189	239	468	333	175	164	366	523	542	585	542	542	542	542	542	542	542
	0																
Budget node	1,003,059	6,105	23,942	28,802	27,365	34,318	25,330	28,848	55,627	22,157	340,905	60,342	70,146	70,146	72,503	73,289	63,231
Quota established	1,003,059	40,913	15,200	25,500	29,100	19,000	40,865	51,589	35,000	35,000	328,951	60,342	70,146	70,146	72,503	73,289	35,514
Interests + COCESN/	15,270	96	318	646	1,010	1,067	539	122	1,823	1,253	1,200	1,200	1,200	1,200	1,200	1,200	1,200
Difference	0	34,808	-8,742	-3,302	1,735	-15,318	15,535	22,741	-20,627	12,843	-11,954	0	0	0	0	0	-27,718

Node France SOCA																	
	TOTAL	2003	2004	2005	2006	2007	2008	2009	2010	2011	2012	2013	2014	2015	2016	2017	2018
Number of nodes		15	15	15	16	16	16	16	16	16	16	16	16	16	16	16	16
BL 19	248,850	1,748	7,751	9,574	11,022	14,507	13,978	14,780	14,325	16,772	19,725	20,918	20,750	20,750	20,750	20,750	20,750
BL 21.01 PAS	327,371	2,319	5,674	7,558	10,553	12,337	13,214	0	34,972	2,345	21,982	12,174	42,969	42,969	42,969	42,969	32,367
PLI PAS	1,909	0	28	38	158	0	66	57	77	0	212	212	212	212	212	212	212
	0																
BL 39	28,776	0	201	4,090	142	50	2,238	1,825	290	-123	2,813	2,875	2,875	2,875	2,875	2,875	2,875
BL 49	315,695	5	5,115	3,027	58	431	1,291	7,600	792	1,135	266,600	19,350	344	344	2,487	3,201	3,915
BL 50	0																
BL 53.01	9,370	43	315	298	72	543	290	231	891	834	744	794	863	863	863	863	863
BL 53.02	645	0	8	34	21	0	0	207	0	0	44	50	56	56	56	56	56
AOSC 10%	60,688	180	1,339	1,702	1,132	1,553	1,770	2,828	1,630	1,862	28,993	4,399	2,489	2,489	2,703	2,775	2,846
AOSC PAS	7,052	139	294	302	272	185	579	513	530	527	530	530	530	530	530	530	530
	0																
Budget node	985,085	4,337	20,408	25,978	22,420	28,539	32,886	27,921	51,684	22,099	340,443	60,102	69,888	69,888	72,246	73,031	63,215
Quota established	985,085	34,763	11,300	20,900	26,400	25,000	45,795	51,371	24,092	42,203	323,622	60,102	69,888	69,888	72,246	73,031	34,483
Interests+COCESNA	15,270	96	318	646	1,010	1,067	539	122	1,823	1,253	1,200	1,200	1,200	1,200	1,200	1,200	1,200
Difference	0	30,426	-9,108	-5,078	3,980	-3,539	12,909	23,450	-27,592	20,104	-16,821	0	0	0	0	0	-28,732

Node Guyana SYGC																	
	TOTAL	2003	2004	2005	2006	2007	2008	2009	2010	2011	2012	2013	2014	2015	2016	2017	2018
Number of nodes		15	15	15	16	16	16	16	16	16	16	16	16	16	16	16	16
BL 19	248,850	1,748	7,751	9,574	11,022	14,507	13,978	14,780	14,325	16,772	19,725	20,918	20,750	20,750	20,750	20,750	20,750
BL 21.01 PAS	232,302	2,197	4,965	4,468	2,881	3,011	3,499	0	16,248	2,345	9,500	5,933	36,222	36,222	36,222	36,222	32,367
PLI PAS	694	0	25	22	43	0	17	18	28	0	77	77	77	77	77	77	77
	0																
BL 39	34,100	0	201	3,207	2,177	2,696	0	3,093	1,772	891	2,813	2,875	2,875	2,875	2,875	2,875	2,875
BL 49	322,639	5	5,115	4,630	3,768	698	2,894	7,360	792	1,135	266,600	19,350	344	344	2,487	3,201	3,915
BL 50	0																
BL 53.01	9,370	43	315	298	72	543	290	231	891	834	744	794	863	863	863	863	863
BL 53.02	645	0	8	34	21	0	0	207	0	0	44	50	56	56	56	56	56
AOSC 10%	61,812	180	1,339	1,774	1,706	1,844	1,707	2,828	1,778	1,963	28,993	4,399	2,489	2,489	2,703	2,775	2,846
AOSC PAS	2,762	132	257	179	74	45	153	164	193	216	193	193	193	193	193	193	193
	0																
Budget node	897,903	4,208	19,658	23,542	20,755	22,279	21,999	28,560	34,204	22,904	327,488	53,389	62,669	62,669	65,026	65,812	62,742
Quota established	897,903	34,313	9,900	19,900	22,900	15,000	35,935	43,009	30,000	30,000	314,398	53,389	62,669	62,669	65,026	65,812	32,982
Interests + COCESN/	15,270	96	318	646	1,010	1,067	539	122	1,823	1,253	1,200	1,200	1,200	1,200	1,200	1,200	1,200
Difference	0	30,105	-9,758	-3,642	2,145	-7,279	13,936	14,449	-4,204	7,096	-13,090	0	0	0	0	0	-29,760

Node Paraguay SGAS																	
	TOTAL	2003	2004	2005	2006	2007	2008	2009	2010	2011	2012	2013	2014	2015	2016	2017	2018
Number of nodes		15	15	15	16	16	16	16	16	16	16	16	16	16	16	16	16
BL 19	248,850	1,748	7,751	9,574	11,022	14,507	13,978	14,780	14,325	16,772	19,725	20,918	20,750	20,750	20,750	20,750	20,750
BL 21.01 PAS	316,712	2,481	6,408	11,789	9,616	6,858	7,677	0	33,858	2,345	21,239	11,803	42,567	42,567	42,567	42,567	32,367
PLI PAS	1,814	0	32	59	144	0	38	38	74	0	204	204	204	204	204	204	204
	0																
BL 39	50,989	0	201	4,065	3,460	6,454	7,569	6,046	3,254	-123	2,813	2,875	2,875	2,875	2,875	2,875	2,875
BL 49	324,514	5	5,115	3,027	1,414	5,898	3,527	7,360	792	1,135	266,600	19,350	344	344	2,487	3,201	3,915
BL 50	0																
BL 53.01	9,370	43	315	298	72	543	290	231	891	834	744	794	863	863	863	863	863
BL 53.02	645	0	8	34	21	0	0	207	0	0	44	50	56	56	56	56	56
AOSC 10%	63,393	180	1,339	1,700	1,599	2,740	2,527	2,828	1,926	1,862	28,993	4,399	2,489	2,489	2,703	2,775	2,846
AOSC PAS	6,514	149	332	472	248	103	336	342	510	452	510	510	510	510	510	510	510
	0																
Budget node	1,007,531	4,510	21,184	30,372	26,586	36,037	35,403	31,712	53,807	22,024	339,672	59,703	69,459	69,459	71,816	72,602	63,186
Quota established	1,007,531	35,363	12,700	21,900	30,700	25,600	46,160	53,262	47,056	40,162	323,073	59,703	69,459	69,459	71,816	72,602	28,518
Interests+COCESNA	15,270	96	318	646	1,010	1,067	539	122	1,823	1,253	1,200	1,200	1,200	1,200	1,200	1,200	1,200
Difference	0	30,853	-8,484	-8,472	4,114	-10,437	10,757	21,550	-6,751	18,137	-16,599	0	0	0	0	0	-34,669

Node Peru SPIM																	
	TOTAL	2003	2004	2005	2006	2007	2008	2009	2010	2011	2012	2013	2014	2015	2016	2017	2018
Number of nodes		15	15	15	16	16	16	16	16	16	16	16	16	16	16	16	16
BL 19	248,850	1,748	7,751	9,574	11,022	14,507	13,978	14,780	14,325	16,772	19,725	20,918	20,750	20,750	20,750	20,750	20,750
BL 21.01 PAS	624,587	6,346	16,870	22,865	26,278	28,814	33,426	0	91,256	2,345	62,445	33,876	66,190	66,190	66,190	66,190	35,307
PLI PAS	5,459	0	84	114	394	0	167	151	224	0	618	618	618	618	618	618	618
	0																
BL 39	38,541	0	201	2,350	4,426	4,300	4,080	2,955	290	-123	2,813	2,875	2,875	2,875	2,875	2,875	2,875
BL 49	315,455	5	5,115	3,027	58	431	1,291	7,360	792	1,135	266,600	19,350	344	344	2,487	3,201	3,915
BL 50	0																
BL 53.01	9,370	43	315	298	72	543	290	231	891	834	744	794	863	863	863	863	863
BL 53.02	645	0	8	34	21	0	0	207	0	0	44	50	56	56	56	56	56
AOSC 10%	61,551	180	1,339	1,528	1,560	1,978	1,955	2,828	1,630	1,862	28,993	4,399	2,489	2,489	2,703	2,775	2,846
AOSC PAS	20,108	381	875	915	678	432	1,464	1,358	1,544	1,653	1,544	1,544	1,544	1,544	1,544	1,544	1,544
	0																
Budget node	1,309,296	8,606	32,240	40,060	43,500	49,938	56,110	29,749	109,128	23,225	382,325	83,223	94,529	94,529	96,886	97,672	67,574
Quota established	1,309,296	49,613	28,300	36,500	39,700	40,000	71,372	77,820	78,271	77,000	349,287	83,223	94,529	94,529	96,886	62,288	29,977
Interests + COCESN/	15,270	96	318	646	1,010	1,067	539	122	1,823	1,253	1,200	1,200	1,200	1,200	1,200	1,200	1,200
Difference	0	41,007	-3,940	-3,560	-3,800	-9,938	15,262	48,071	-30,857	53,775	-33,038	0	0	0	0	-35,384	-37,598

Node Suriname SMPM																	
	TOTAL	2003	2004	2005	2006	2007	2008	2009	2010	2011	2012	2013	2014	2015	2016	2017	2018
Number of nodes		15	15	15	16	16	16	16	16	16	16	16	16	16	16	16	16
BL 19	248,850	1,748	7,751	9,574	11,022	14,507	13,978	14,780	14,325	16,772	19,725	20,918	20,750	20,750	20,750	20,750	20,750
BL 21.01 PAS	269,742	2,197	3,951	9,792	5,485	4,684	3,969	0	24,496	2,345	14,998	8,682	39,194	39,194	39,194	39,194	32,367
PLI PAS	1,202	0	20	49	82	0	20	26	49	0	137	137	137	137	137	137	137
	0																
BL 39	34,230	0	201	4,065	2,177	-232	2,238	558	3,254	1,906	2,813	2,875	2,875	2,875	2,875	2,875	2,875
BL 49	316,805	5	5,115	3,027	58	1,781	1,291	7,360	792	1,135	266,600	19,350	344	344	2,487	3,201	3,915
BL 50	0																
BL 53.01	9,370	43	315	298	72	543	290	231	891	834	744	794	863	863	863	863	863
BL 53.02	645	0	8	34	21	0	0	207	0	0	44	50	56	56	56	56	56
AOSC 10%	61,495	180	1,339	1,700	1,335	1,660	1,770	2,828	1,926	2,065	28,993	4,399	2,489	2,489	2,703	2,775	2,846
AOSC PAS	4,411	132	205	392	141	70	174	237	341	330	341	341	341	341	341	341	341
	0																
Budget node	931,480	4,208	18,588	28,285	19,384	21,946	23,190	26,106	44,252	24,134	333,194	56,346	65,849	65,849	68,206	68,992	62,950
Quota established	931,480	34,313	7,400	18,500	28,700	18,300	36,412	44,752	30,000	30,000	318,461	56,346	65,849	65,849	68,206	68,992	39,400
Interests+COCESNA	15,270	96	318	646	1,010	1,067	539	122	1,823	1,253	1,200	1,200	1,200	1,200	1,200	1,200	1,200
Difference	0	30,105	-11,188	-9,785	9,316	-3,646	13,222	18,646	-14,252	5,866	-14,733	0	0	0	0	0	-23,551

Node Trinidad and Tobago (Piarco) TTZP																	
	TOTAL	2003	2004	2005	2006	2007	2008	2009	2010	2011	2012	2013	2014	2015	2016	2017	2018
Number of nodes		15	15	15	16	16	16	16	16	16	16	16	16	16	16	16	16
BL 19	229,777	0	0	0	11,022	14,507	13,978	14,780	14,325	16,772	19,725	20,918	20,750	20,750	20,750	20,750	20,750
BL 21.01 PAS	256,860	0	0	0	7,255	3,847	5,327	0	24,719	2,345	15,146	8,757	39,274	39,274	39,274	39,274	32,367
PLI PAS	1,180	0	0	0	109	0	27	27	50	0	138	138	138	138	138	138	138
	0																
BL 39	31,960	0	0	0	2,177	2,696	2,238	3,137	1,772	-123	2,813	2,875	2,875	2,875	2,875	2,875	2,875
BL 49	313,626	0	0	2,815	58	431	3,014	9,140	792	1,135	266,600	19,350	344	344	2,487	3,201	3,915
BL 50	0																
BL 53.01	8,714	0	0	0	72	543	290	231	891	834	744	794	863	863	863	863	863
BL 53.02	603	0	0	0	21	0	0	207	0	0	44	50	56	56	56	56	56
AOSC 10%	58,537	0	0	282	1,335	1,818	1,943	2,828	1,778	1,862	28,993	4,399	2,489	2,489	2,703	2,775	2,846
AOSC PAS	3,846	0	0	0	187	58	233	244	345	361	345	345	345	345	345	345	345
	0																
Budget node	890,892	0	0	3,097	21,226	22,833	26,510	30,473	42,849	21,933	333,348	56,426	65,935	65,935	68,292	69,078	62,956
Quota established	890,892	0	0	22,700	22,700	15,500	37,791	48,776	30,000	30,000	318,571	56,426	65,935	65,935	68,292	69,078	39,188
Interests + COCESN/	14,210	0	0	0	1,010	1,067	539	122	1,823	1,253	1,200	1,200	1,200	1,200	1,200	1,200	1,200
Difference	0	0	0	19,604	1,474	-7,333	11,281	18,303	-12,849	8,067	-14,777	0	0	0	0	0	-23,768

Node Uruguay SUMU																	
	TOTAL	2003	2004	2005	2006	2007	2008	2009	2010	2011	2012	2013	2014	2015	2016	2017	2018
Number of nodes		15	15	15	16	16	16	16	16	16	16	16	16	16	16	16	16
BL 19	248,850	1,748	7,751	9,574	11,022	14,507	13,978	14,780	14,325	16,772	19,725	20,918	20,750	20,750	20,750	20,750	20,750
BL 21.01 PAS	350,189	5,776	11,348	9,175	11,629	11,459	13,579	0	38,316	2,345	24,211	13,289	44,174	44,174	44,174	44,174	32,367
PLI PAS	2,141	0	57	46	174	0	68	58	85	0	236	236	236	236	236	236	236
	0																
BL 39	44,773	0	201	4,065	5,217	4,970	4,544	2,578	2,244	891	2,813	2,875	2,875	2,875	2,875	2,875	2,875
BL 49	353,196	5	5,115	3,027	58	36,462	3,001	7,360	792	1,135	266,600	19,350	344	344	2,487	3,201	3,915
BL 50	0																
BL 53.01	9,370	43	315	298	72	543	290	231	891	834	744	794	863	863	863	863	863
BL 53.02	645	0	8	34	21	0	0	207	0	0	44	50	56	56	56	56	56
AOSC 10%	65,986	180	1,339	1,700	1,639	5,648	2,172	2,828	1,825	1,963	28,993	4,399	2,489	2,489	2,703	2,775	2,846
AOSC PAS	8,199	347	588	367	300	172	595	517	590	591	590	590	590	590	590	590	590
	0																
Budget node	1,068,079	8,002	26,404	27,640	29,123	72,694	37,687	28,438	57,246	23,279	342,756	61,301	71,178	71,178	73,535	74,320	63,299
Quota established	1,068,079	47,513	16,200	28,800	28,000	77,171	64,003	39,759	30,000	30,000	325,269	61,301	71,178	71,178	73,535	74,320	29,853
Interests+COCESNA	15,270	96	318	646	1,010	1,067	539	122	1,823	1,253	1,200	1,200	1,200	1,200	1,200	1,200	1,200
Difference	0	39,511	-10,204	1,160	-1,123	4,477	26,316	11,321	-27,246	6,721	-17,487	0	0	0	0	0	-33,446

Node Venezuela SVM1																	
	TOTAL	2003	2004	2005	2006	2007	2008	2009	2010	2011	2012	2013	2014	2015	2016	2017	2018
Number of nodes		15	15	15	16	16	16	16	16	16	16	16	16	16	16	16	16
BL 19	248,850	1,748	7,751	9,574	11,022	14,507	13,978	14,780	14,325	16,772	19,725	20,918	20,750	20,750	20,750	20,750	20,750
BL 21.01 PAS	699,745	4,881	10,233	22,485	19,440	26,012	28,830	0	105,076	2,345	78,846	45,670	78,358	78,358	78,358	78,358	42,495
PLI PAS	6,031	0	51	112	292	0	144	151	260	0	717	717	717	717	717	717	717
	0																
BL 39	30,081	0	201	4,922	142	50	0	558	3,254	891	2,813	2,875	2,875	2,875	2,875	2,875	2,875
BL 49	322,334	5	5,115	5,269	1,758	3,128	1,291	7,600	792	1,135	266,600	19,350	344	344	2,487	3,201	3,915
BL 50	0																
BL 53.01	9,370	43	315	298	72	543	290	231	891	834	744	794	863	863	863	863	863
BL 53.02	645	0	8	34	21	0	0	207	0	0	44	50	56	56	56	56	56
AOSC 10%	61,609	180	1,339	2,010	1,302	1,823	1,547	2,828	1,926	1,963	28,993	4,399	2,489	2,489	2,703	2,775	2,846
AOSC PAS	21,273	293	531	899	501	390	1,262	1,356	1,793	1,694	1,793	1,793	1,793	1,793	1,793	1,793	1,793
	0																
Budget node	1,384,668	7,054	25,227	44,958	33,540	45,386	46,802	27,590	126,494	24,382	399,075	95,367	107,046	107,046	109,403	110,189	75,111
Quota established	1,384,668	44,213	15,800	27,200	45,800	38,700	71,774	81,664	88,967	80,000	368,283	95,367	107,046	107,046	109,403	73,429	29,977
Interests + COCESN/	15,270	96	318	646	1,010	1,067	539	122	1,823	1,253	1,200	1,200	1,200	1,200	1,200	1,200	1,200
Difference	0	37,159	-9,427	-17,758	12,260	-6,686	24,972	54,074	-37,527	55,618	-30,792	0	0	0	0	-36,760	-45,134

		2003	2004	2005	2006	2007	2008	2009	2010	2011	2012	2013	2014	2015	2016	2017	2018
Revision	1,151,058	6,439	28,795	35,817	37,372	34,601	39,503	55,621	33,357	36,539	486,817	82,593	52,321	52,321	55,321	56,321	57,321
AOSC	1,151,056	6,458	28,840	35,865	30,458	38,117	39,503	55,621	40,945	42,957	476,095	82,593	52,321	52,321	55,321	56,321	57,321
Difference	2	-19	-45	-48	6,914	-3,516	0	0	-7,588	-6,418	10,722	0	0	0	0	0	0
	0																
AOSC PAS	164,205	3,764	8,755	9,250	5,965	3,469	10,126	10,376	12,500	12,500	12,500	12,500	12,500	12,500	12,500	12,500	12,500
Cross check = 0	0																
AOSC 10% =	986,851	2,694	20,085	26,614	24,493	34,648	29,377	45,245	28,445	30,457	463,595	70,093	39,821	39,821	42,821	43,821	44,821
Total AOSC	1,151,056	6,458	28,840	35,865	30,458	38,117	39,503	55,621	40,945	42,957	476,095	82,593	52,321	52,321	55,321	56,321	57,321
Sum of differences	0	504,322	-117,622	41,751	36,441	-7,413	126,169	342,259	-403,241	420,669	-576,546	281,250	0	0	0	-107,656	-540,385

Sum of quotas + interests	17,470,199	94,680	394,622	524,743	493,959	598,794	558,557	442,361	1,069,511	360,323	5,619,540	1,059,754	1,225,496	1,225,496	1,258,496	1,269,496	1,030,496
Budget Total	17,469,580																
Cross check = 0	620																

TOTALS																	
	TOTAL	2003	2004	2005	2006	2007	2008	2009	2010	2011	2012	2013	2014	2015	2016	2017	2018
Number of nodes		15	15	15	16	16	16	16	16	16	16	16	16	16	16	16	16
BL 19	3,962,527	26,217	116,266	143,612	176,355	232,109	223,653	236,481	229,206	268,348	315,600	334,680	332,000	332,000	332,000	332,000	332,000
BL 21.01 PAS	6,468,851	62,727	168,849	231,264	231,264	231,264	231,264	0	771,476	32,831	521,688	290,424	789,160	789,160	789,160	789,160	539,160
PLI PAS	44,592	0	845	1,156	3,469	0	1,156	1,156	1,810	0	5,000	5,000	5,000	5,000	5,000	5,000	5,000
BL 29	6,513,443																
BL 39	544,363	0	3,014	53,863	30,552	34,044	32,852	34,413	29,496	5,130	45,000	46,000	46,000	46,000	46,000	46,000	46,000
BL 49	5,138,654	82	76,728	63,688	36,533	71,637	34,127	109,617	11,495	17,746	4,262,750	306,750	5,500	5,500	35,500	45,500	55,500
BL 50																	
BL 53.01	149,261	643	4,726	4,475	1,150	8,688	4,632	3,703	14,253	13,351	11,900	12,700	13,808	13,808	13,808	13,808	13,808
BL 53.02	10,278	0	118	505	337	0	0	3,318	0	0	700	800	900	900	900	900	900
AOSC 10%	986,851	2,694	20,085	26,614	24,493	34,648	29,377	45,245	28,445	30,457	463,595	70,093	39,821	39,821	42,821	43,821	44,821
AOSC PAS	164,205	3,764	8,755	9,250	5,965	3,469	10,126	10,376	12,500	12,500	12,500	12,500	12,500	12,500	12,500	12,500	12,500
AOSC TOTAL	1,151,056	6,458	28,840	35,865	30,458	38,117	39,503	55,621	40,945	42,957	476,095	82,593	52,321	52,321	55,321	56,321	57,321
Budget	17,226,321	94,680	394,622	524,743	493,959	598,794	558,557	442,361	1,069,511	360,323	5,619,540	1,059,754	1,225,496	1,225,496	1,258,496	1,269,496	1,030,496
Interests+ COCESN/	243,258	1,447	4,765	9,685	16,157	17,065	8,630	1,948	29,170	20,040	19,193	19,193	19,193	19,193	19,193	19,193	19,193
TOTAL	17,469,579	96,127	399,387	534,428	510,116	615,859	567,187	444,309	1,098,681	380,363	5,638,733	1,078,947	1,244,689	1,244,689	1,277,689	1,288,689	1,049,689

TOTAL	17,469,581	96,127	399,386	534,427	510,118	615,859	567,187	444,309	1,098,681	380,363	5,638,733	1,078,947	1,244,689	1,244,689	1,277,689	1,288,689	1,049,689
Cross check = 0	1	19	45	46	-6,909	3,516	0	0	7,588	6,418	-10,722	0	0	0	0	0	0
Cross check = 0	-2	-1	1	0	-2	0	0	0	0	0	0	0	0	0	0	0	0