

URUGUAY

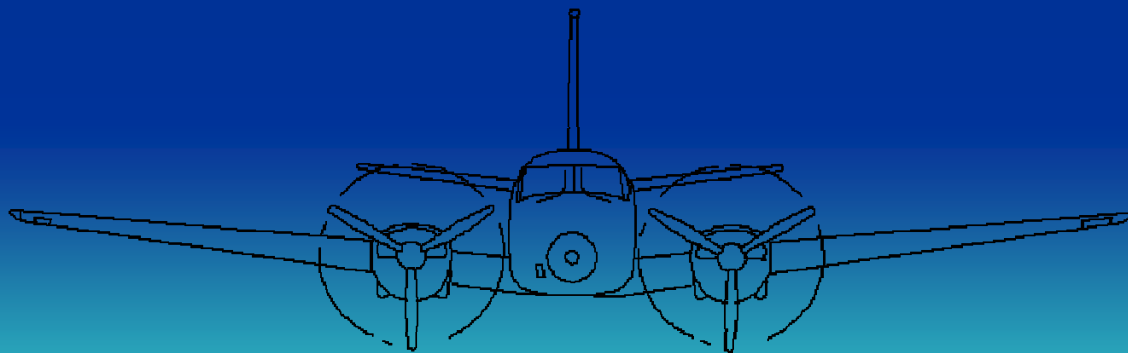


Inspección en Vuelo 2011



CONTENIDO

- SISTEMA DE INSPECCION EN VUELO
- MODIFICACIONES
- AYUDAS A INSPECCIONAR
- ANALISIS CON SISTEMAS GIS
- PROYECCIONES FUTURAS





A65

BEECHCRAFT



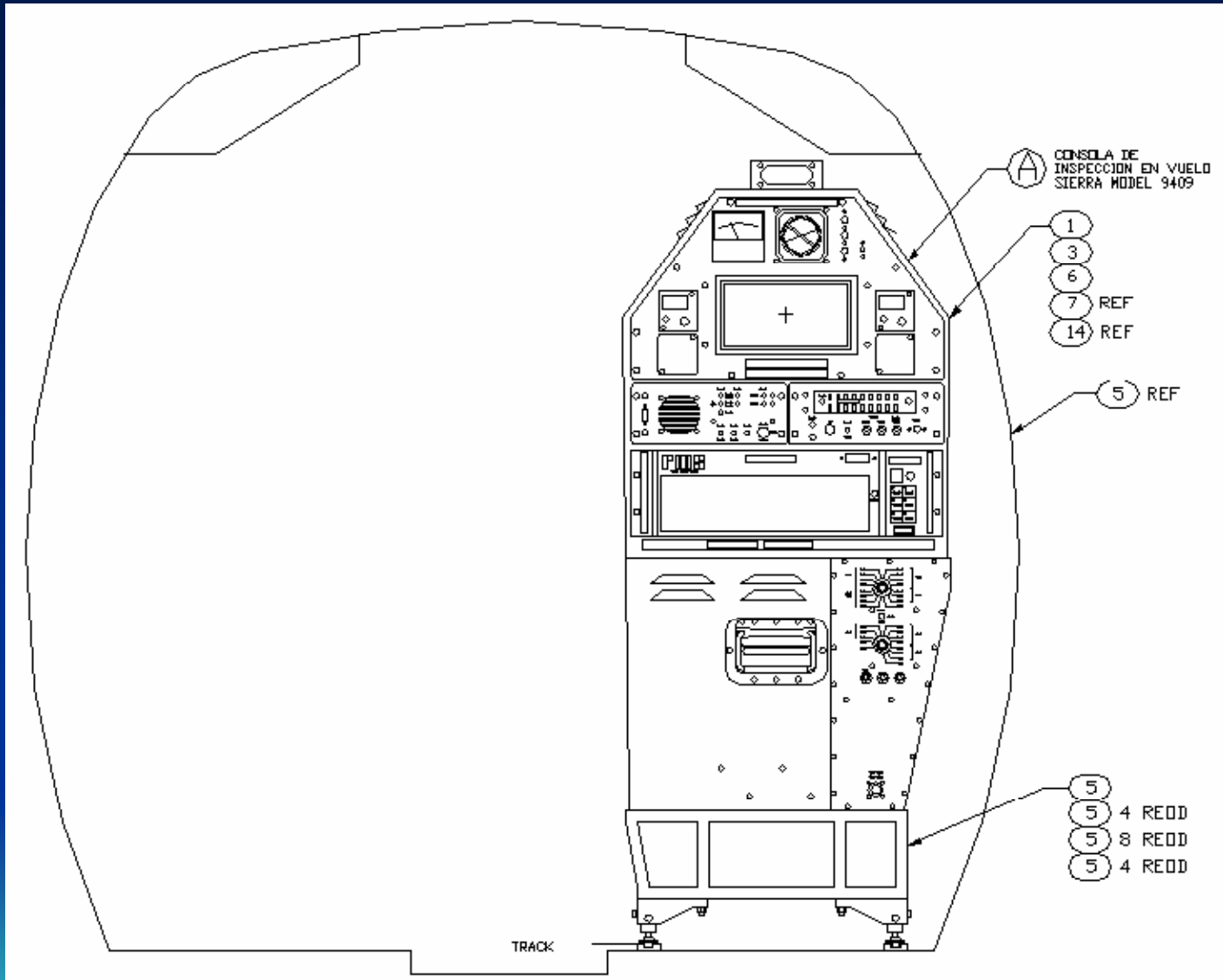
SIERRA MODELO 9409

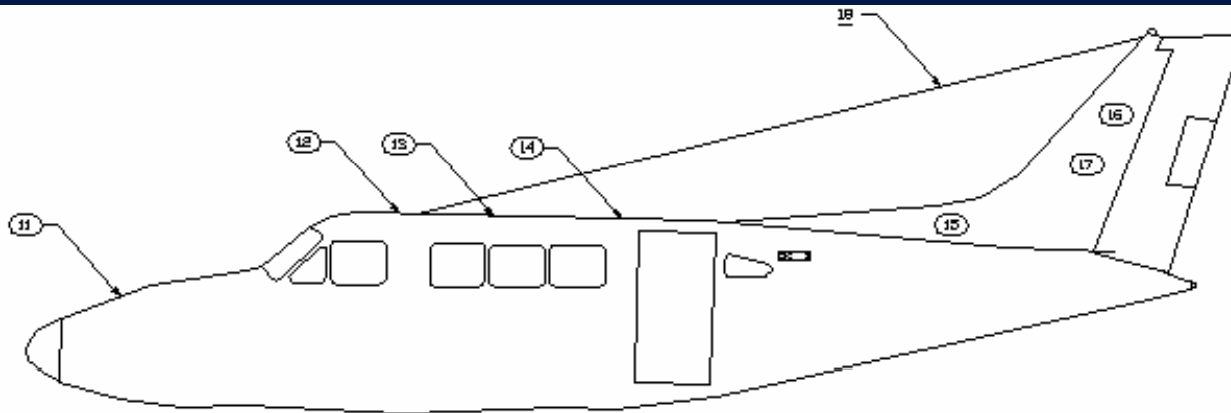


AYUDAS A LA NAVEGACION

CANTIDAD	TIPO DE AYUDA	FRECUENCIA INSP.
3	ILS	Cada 6 meses
6	VOR/DME	Cada 12 meses
25	NDB	Una vez al año
3	DF	Una vez al año
6	VASIS	Una vez al año
6	ALS	Una vez al año
3	RADAR(2 secundarios 1 primario) 9 PAPIS	Una vez al año Radar Secundario Una vez al año
20	Sistemas de Comunicación	Una vez al año
40	Descensos Instrumentales	Cada dos años

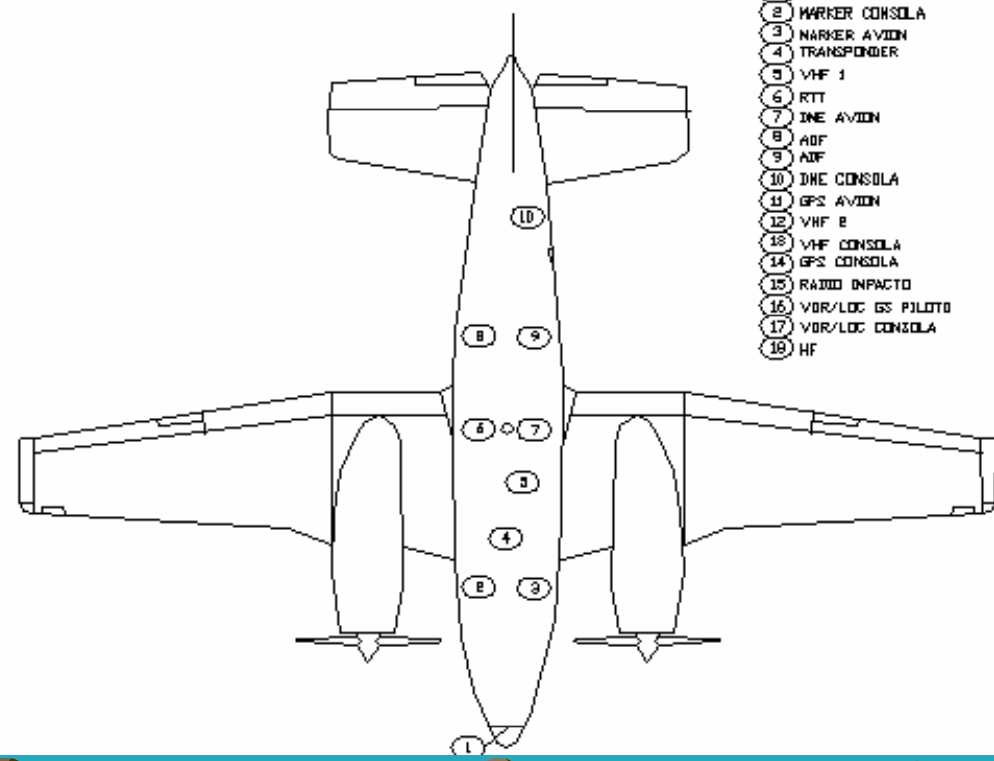






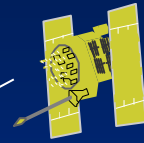
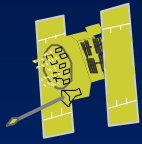
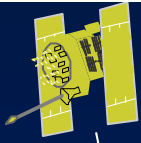
DISTRIBUCION DE LAS ANTENAS

- 1
- 2 MARKER CONSOLA
- 3 MARKER AVION
- 4 TRANSPONDER
- 5 VHF 1
- 6 RTT
- 7 DNE AVION
- 8 ADF
- 9 ADF
- 10 DNE CONSOLA
- 11 GPS AVION
- 12 VHF B
- 13 VHF CONSOLA
- 14 GPS CONSOLA
- 15 RADIO IMPACTO
- 16 VOR/LOC GS PILOTO
- 17 VOR/LOC CONSOLA
- 18 HF









DATA LINK
UHF



GPS DIFERENCIAL









OFF PWR TEST VOL STBY DME OVRD VOL

NAV OFF

Collins

GARMIN GPS 155XL730

No active waypoint
3D Dif Nav epe 23^F_T
sat 2 4 5 9 17 24 26 28 →
sgl ^D8 ^D6 ^D7 ^D8 ^D7 ^D6 ^D7 -

← CLR ENT

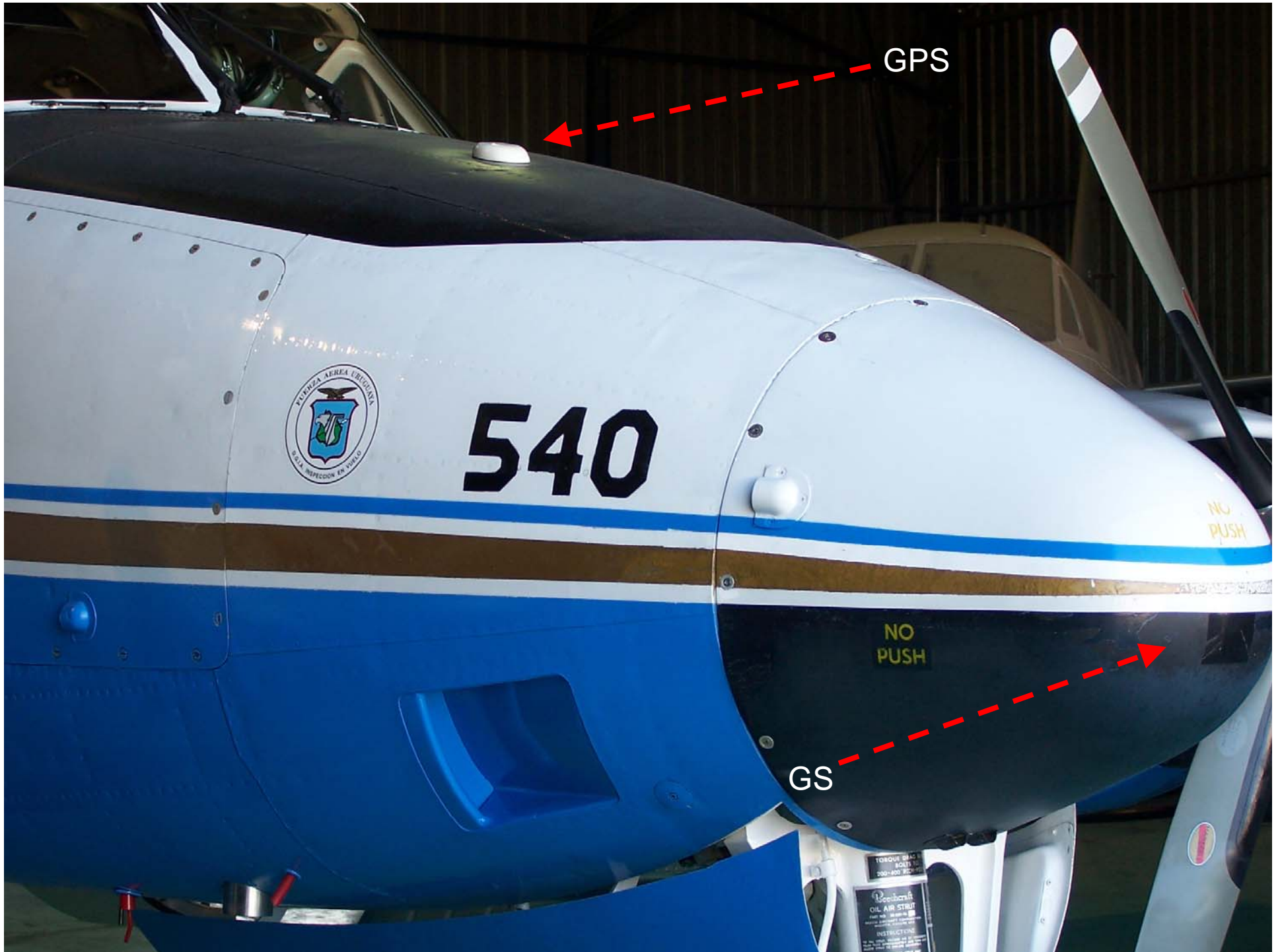
CRSR

▽ ▲ NRST RTE WPT NAV MSG

PVT NORM ISO
IN. M

PVT NORM ISO
INTE





GPS

540

NO
PUSH

NO
PUSH

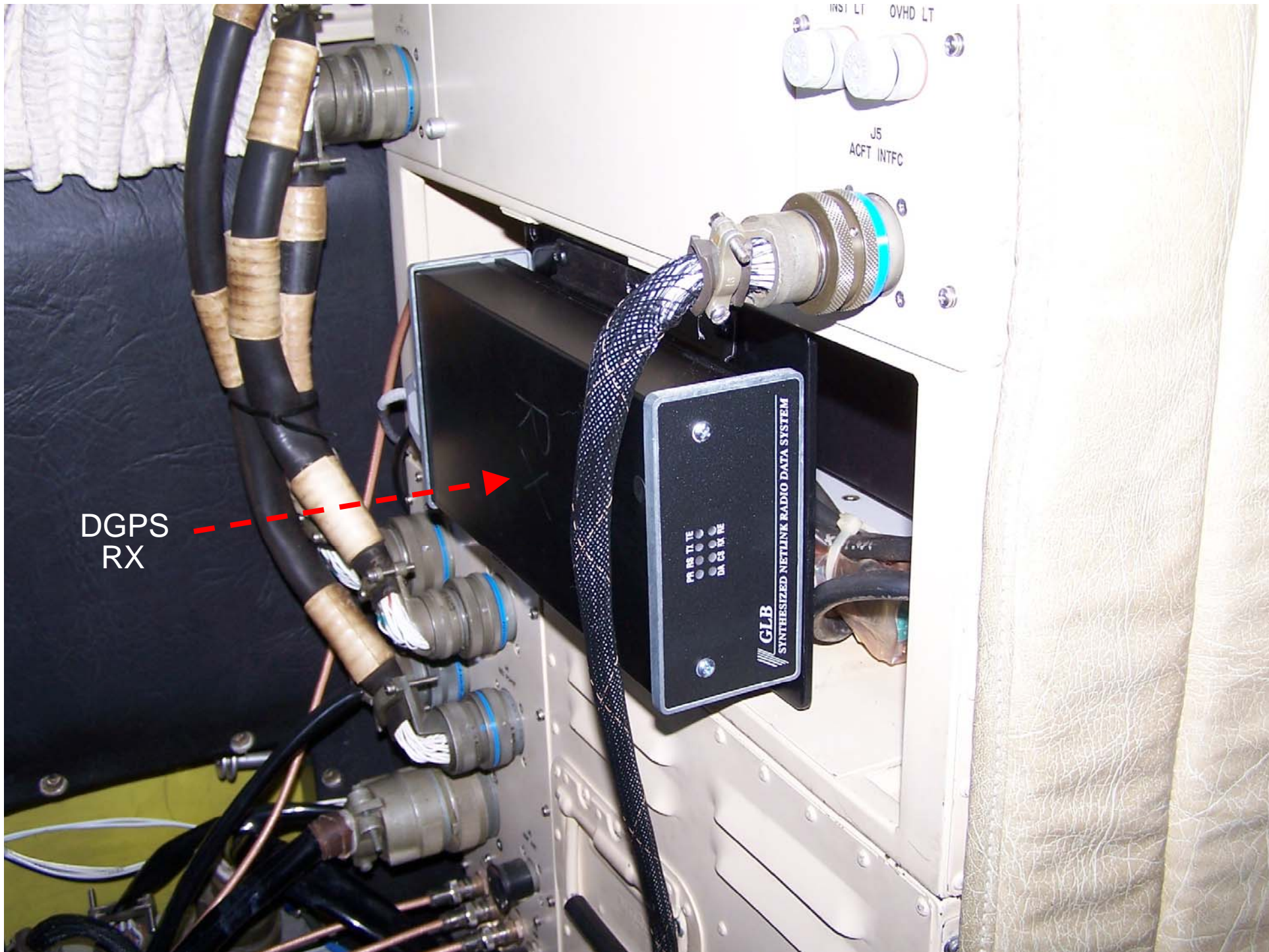
GS

TORQUE SHAG
BOLT TO
200-400 INCHES
BOMBARDIER
OIL AIR STRUT
INSTRUCTIONS



DGPS





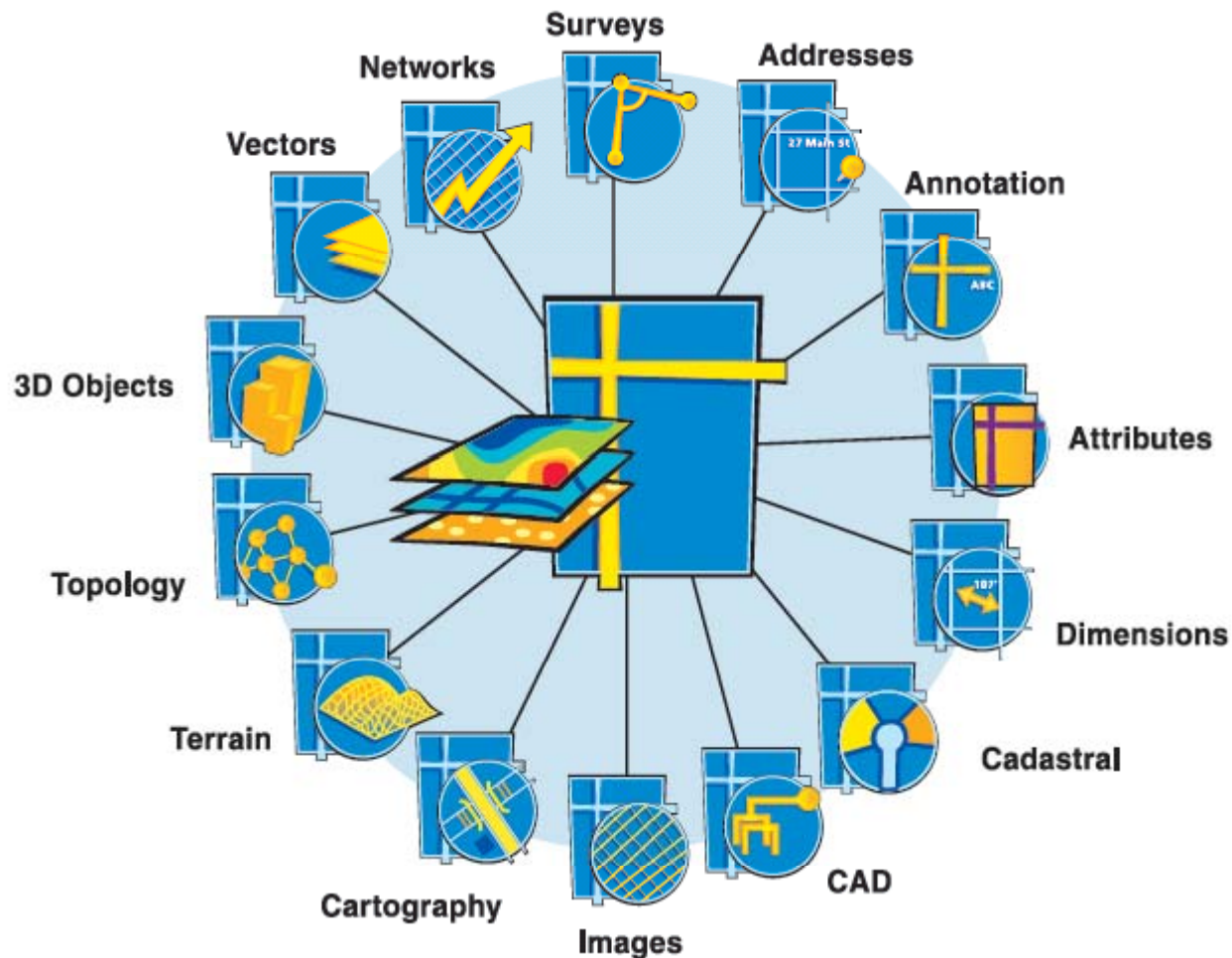
DGPS
RX

CAPTURA DE DATOS

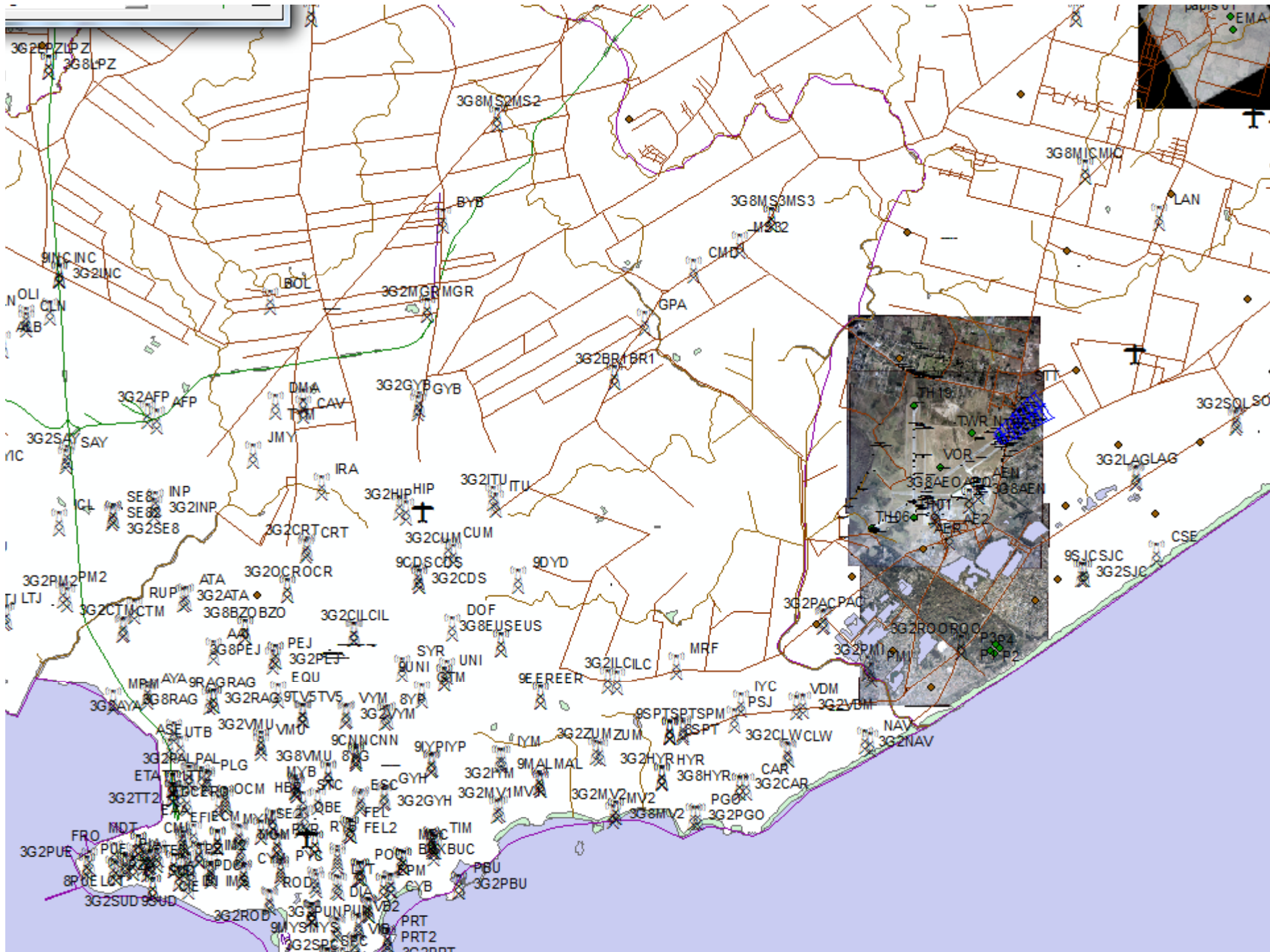




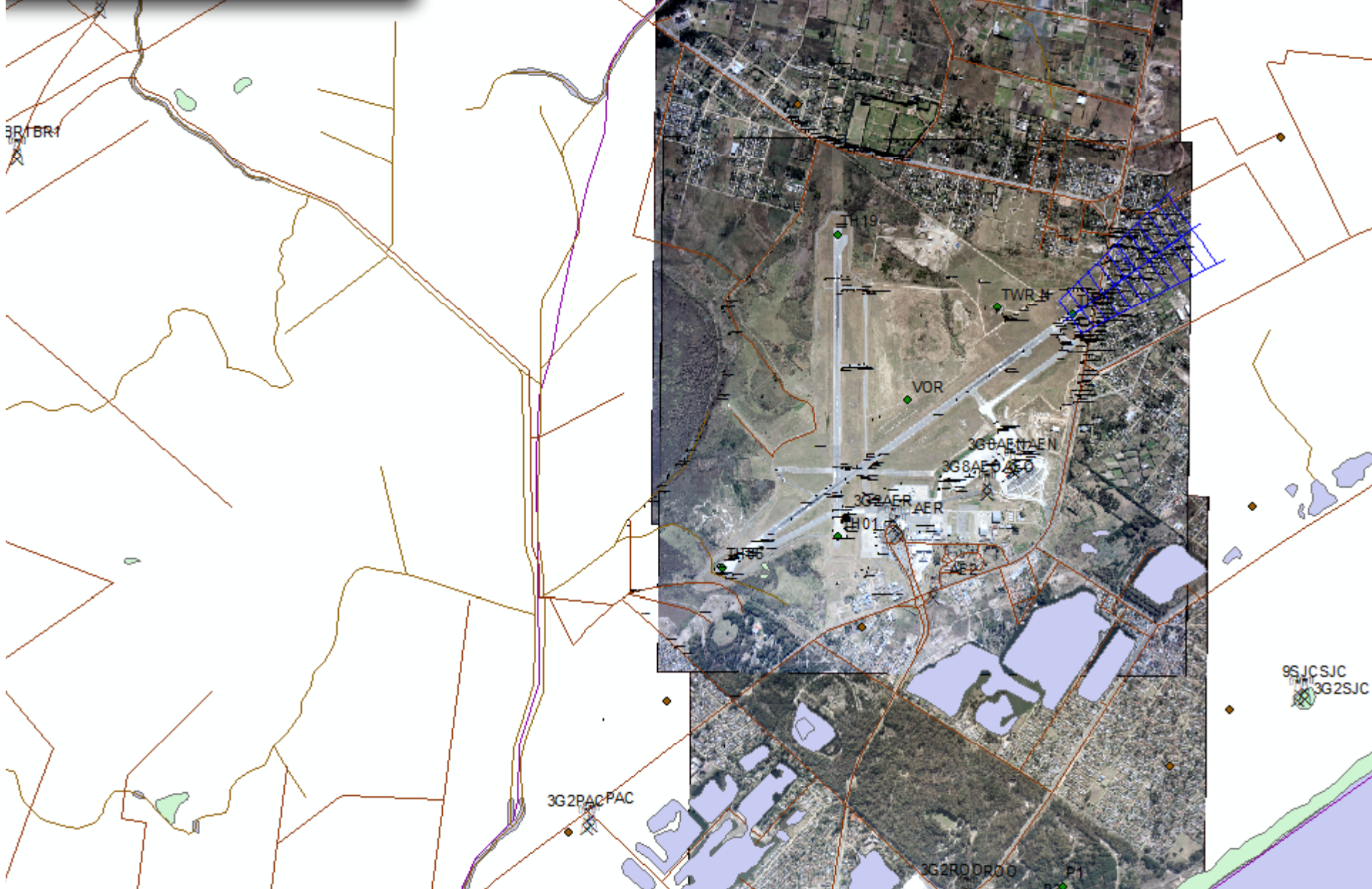
ANALISIS CON GIS 2011



Geodatabases are used to manage and store diverse collections of geographic information types.



c_2009_7Q.dwg



up Layer
7Q.dwg

Georeferencing
Georeferencing Layer: aic_2009_7Q.dwg

<Top-most layer>

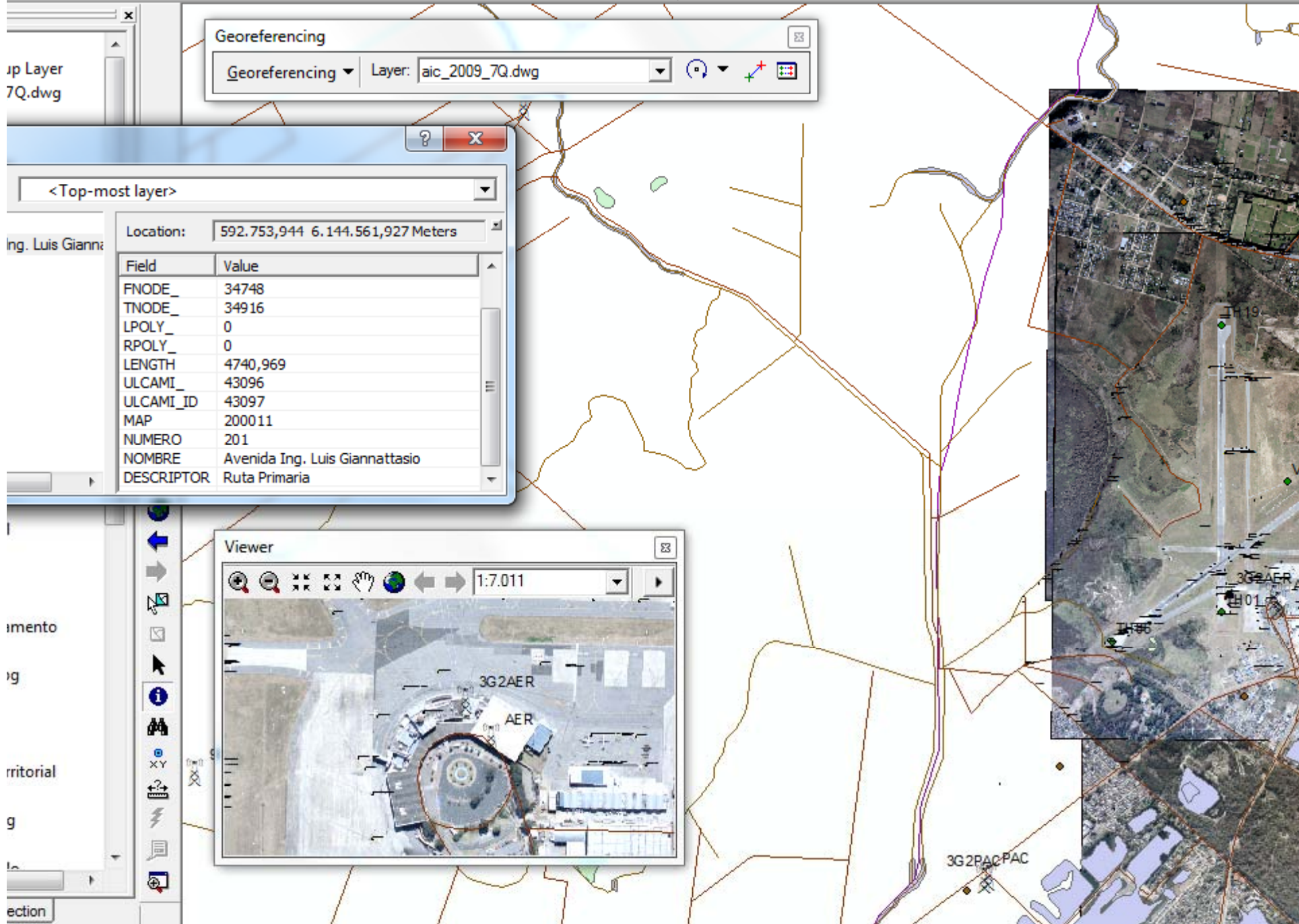

ing. Luis Gianni

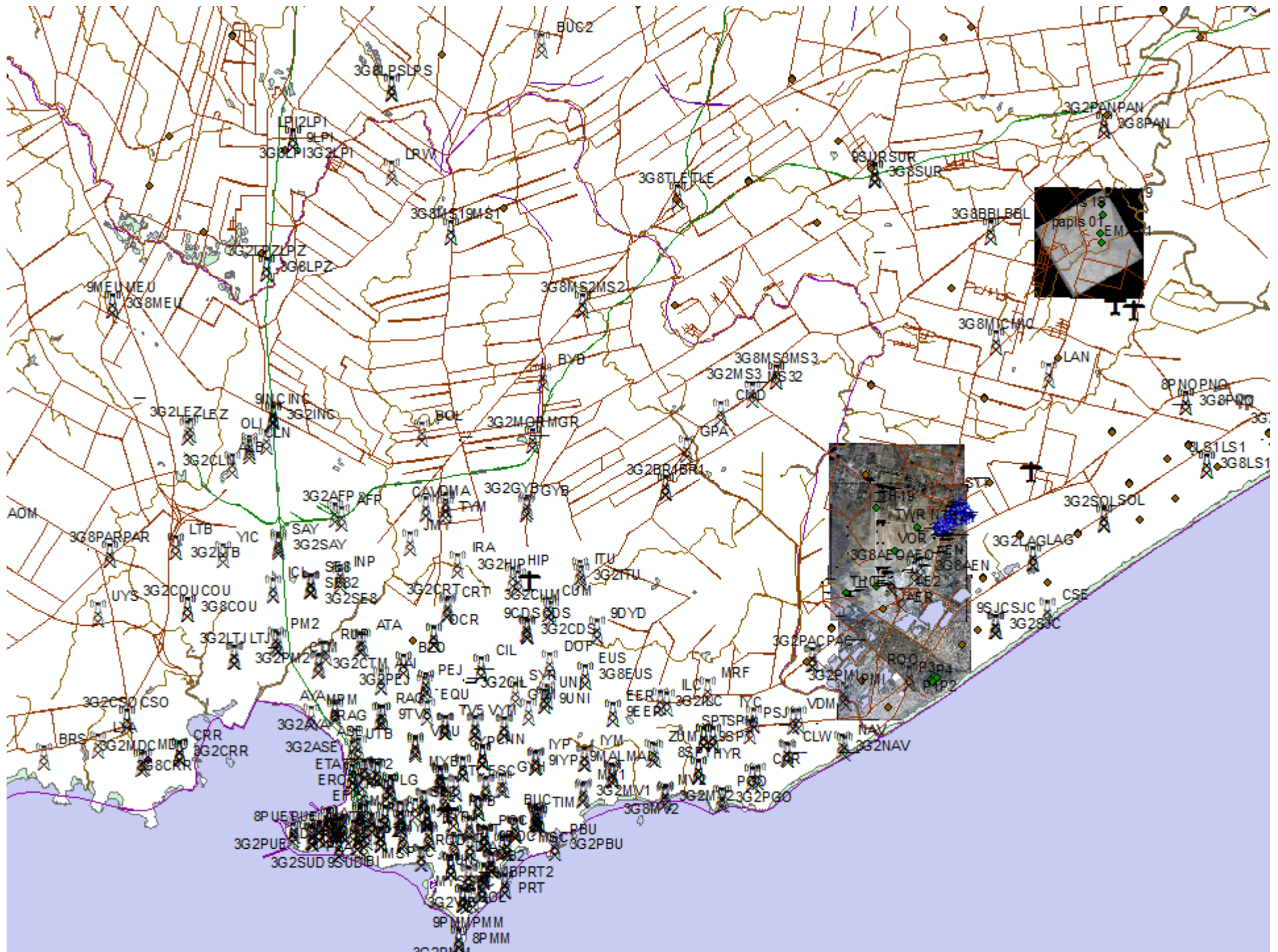
Location: 592.753,944 6.144.561,927 Meters

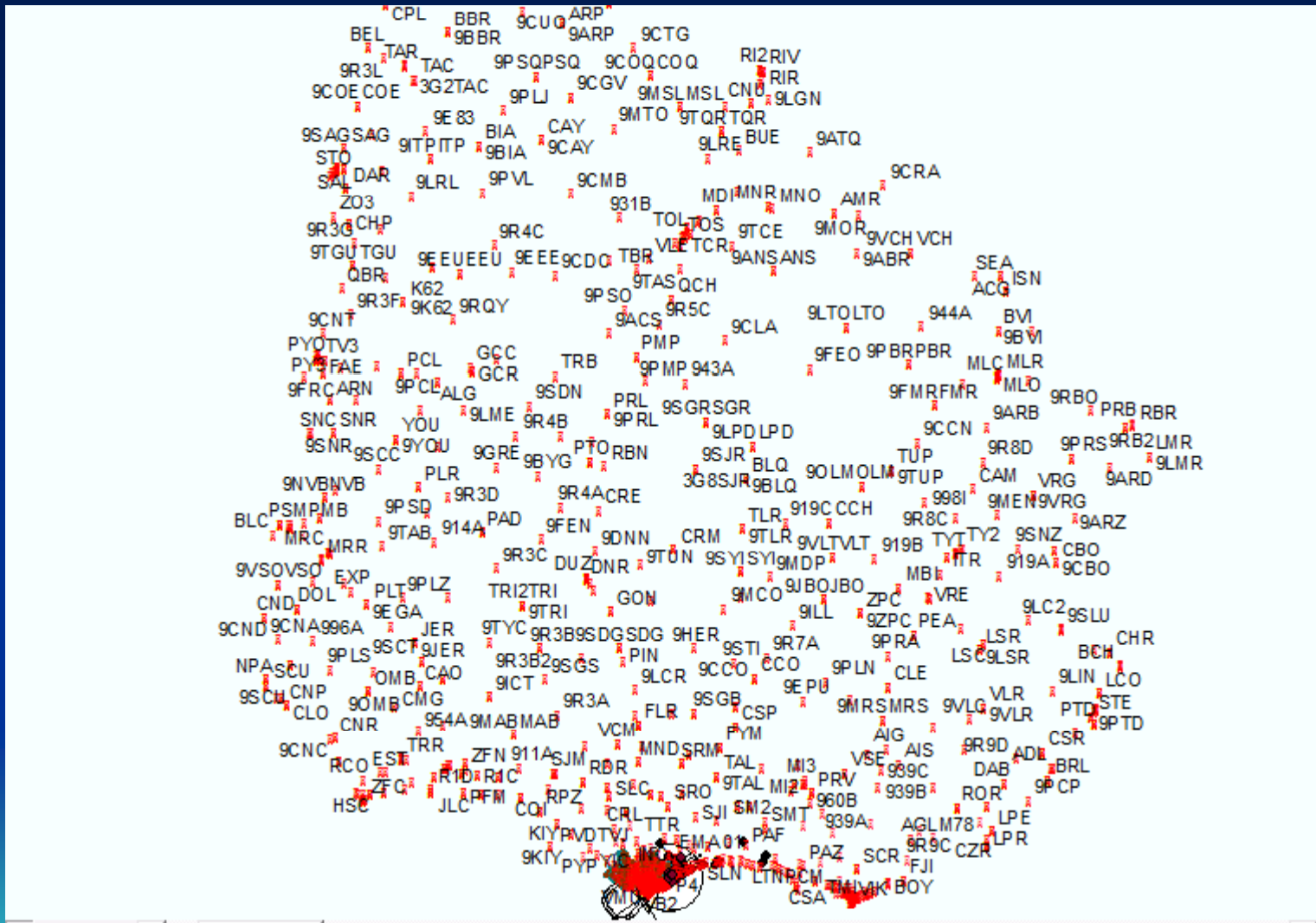
Field	Value
FNODE_	34748
TNODE_	34916
LPOLY_	0
RPOLY_	0
LENGTH	4740,969
ULCAMI_	43096
ULCAMI_ID	43097
MAP	200011
NUMERO	201
NOMBRE	Avenida Ing. Luis Giannattasio
DESCRIPTOR	Ruta Primaria

imento
g
ritorial
g
ection

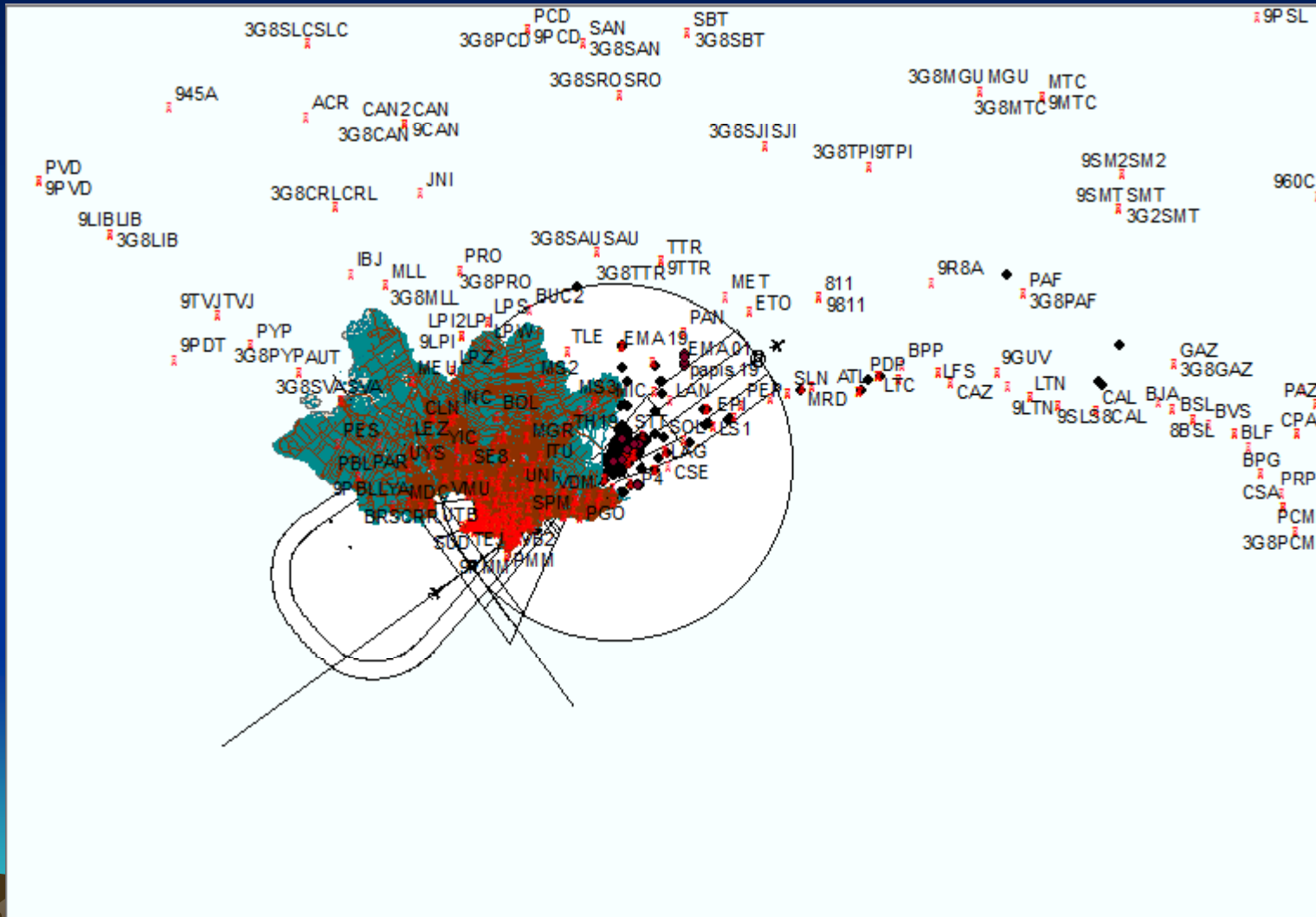
Viewer
1:7.011

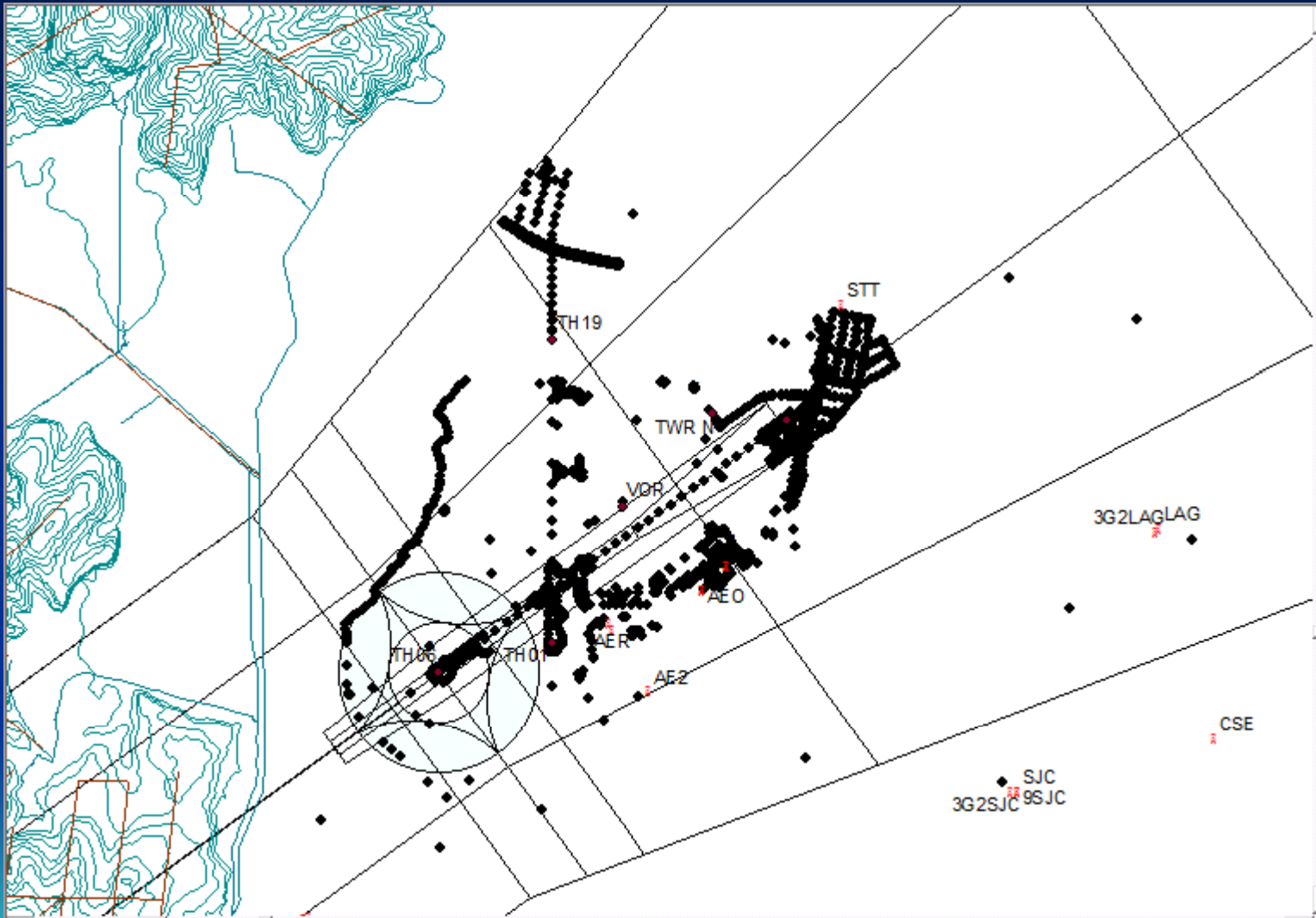


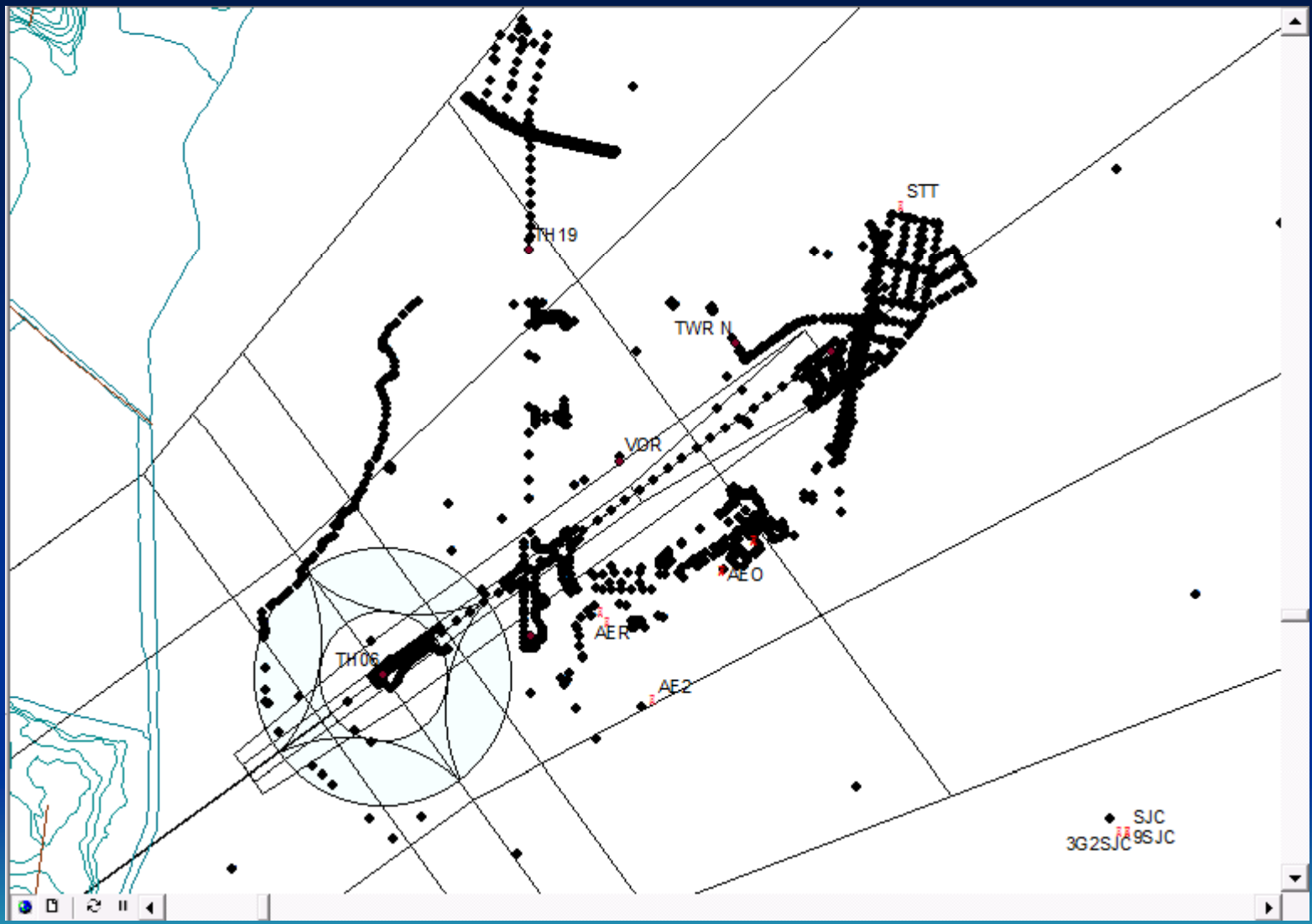


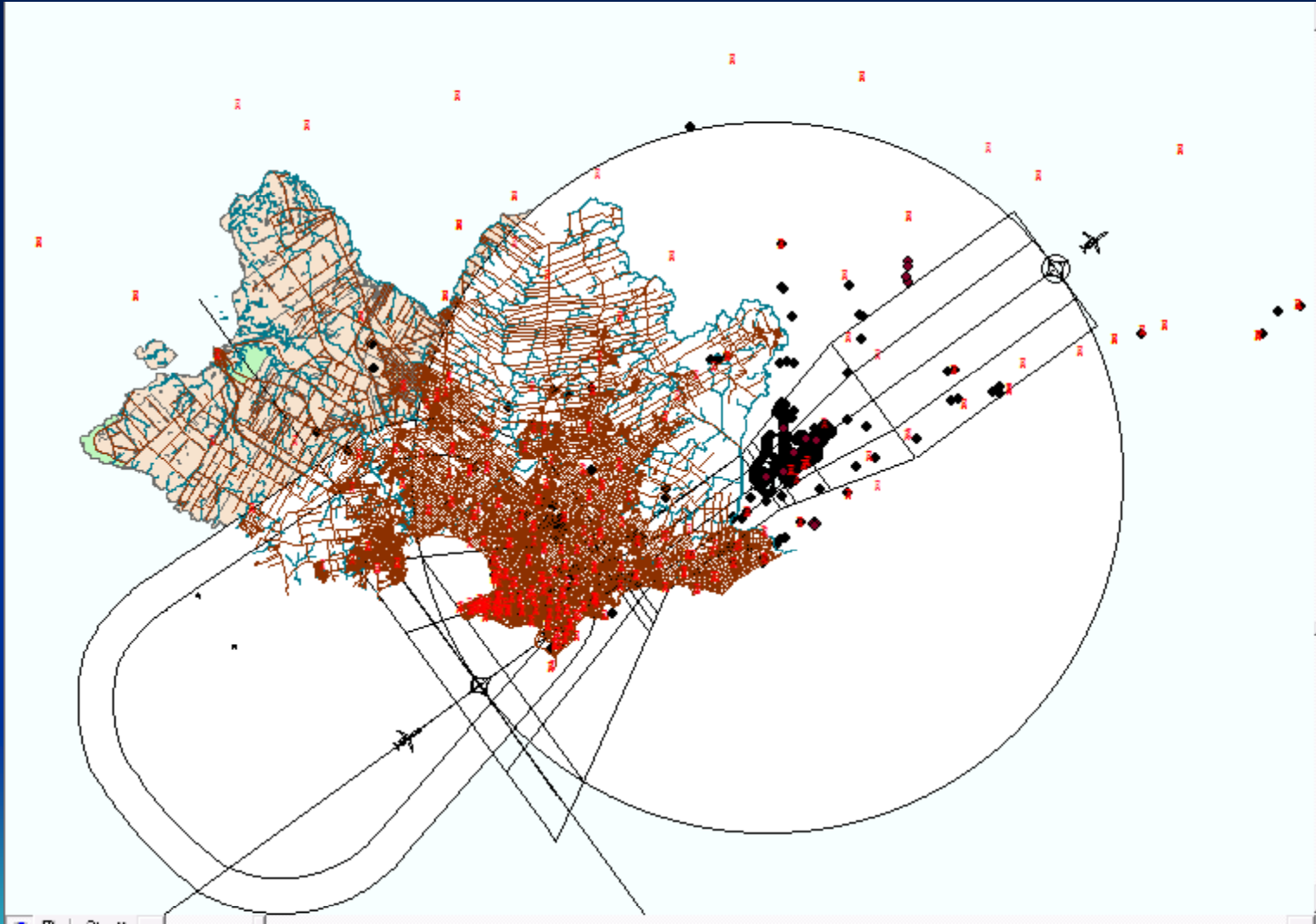


DESCENSOS INSTRUMENTALES

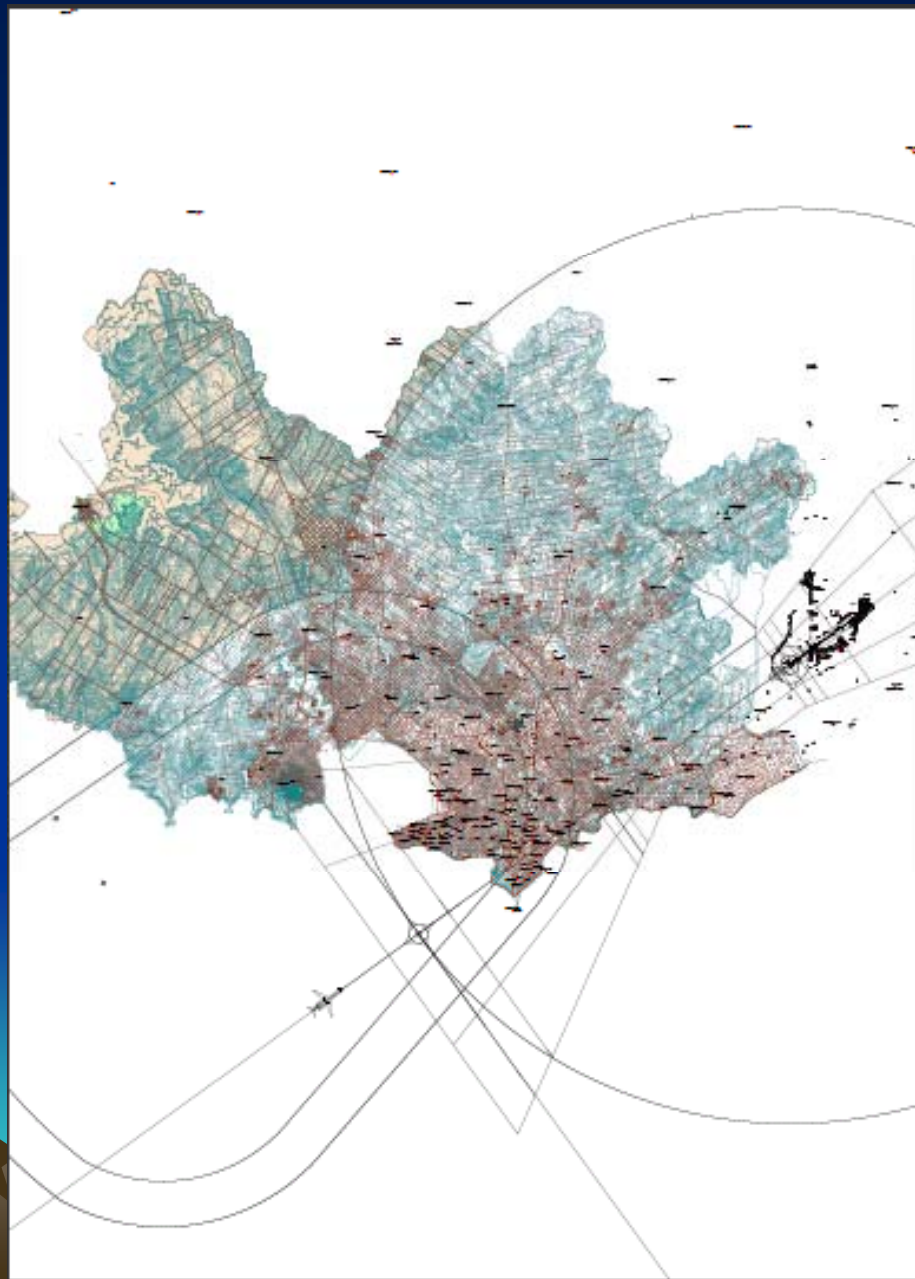






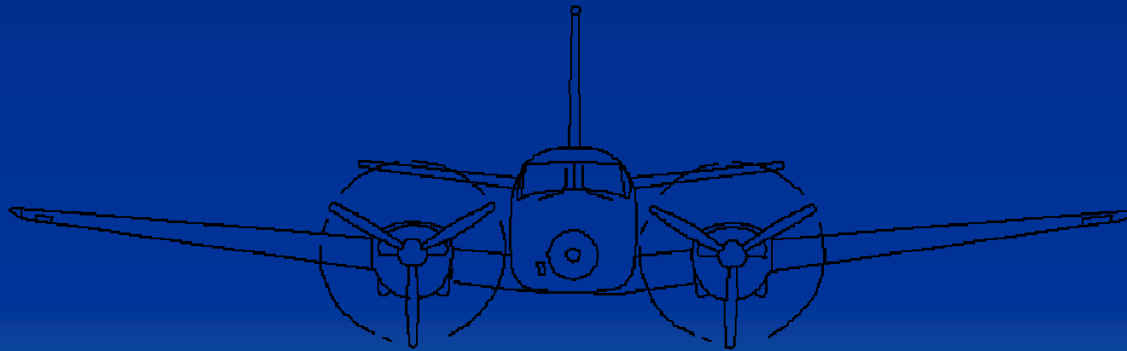


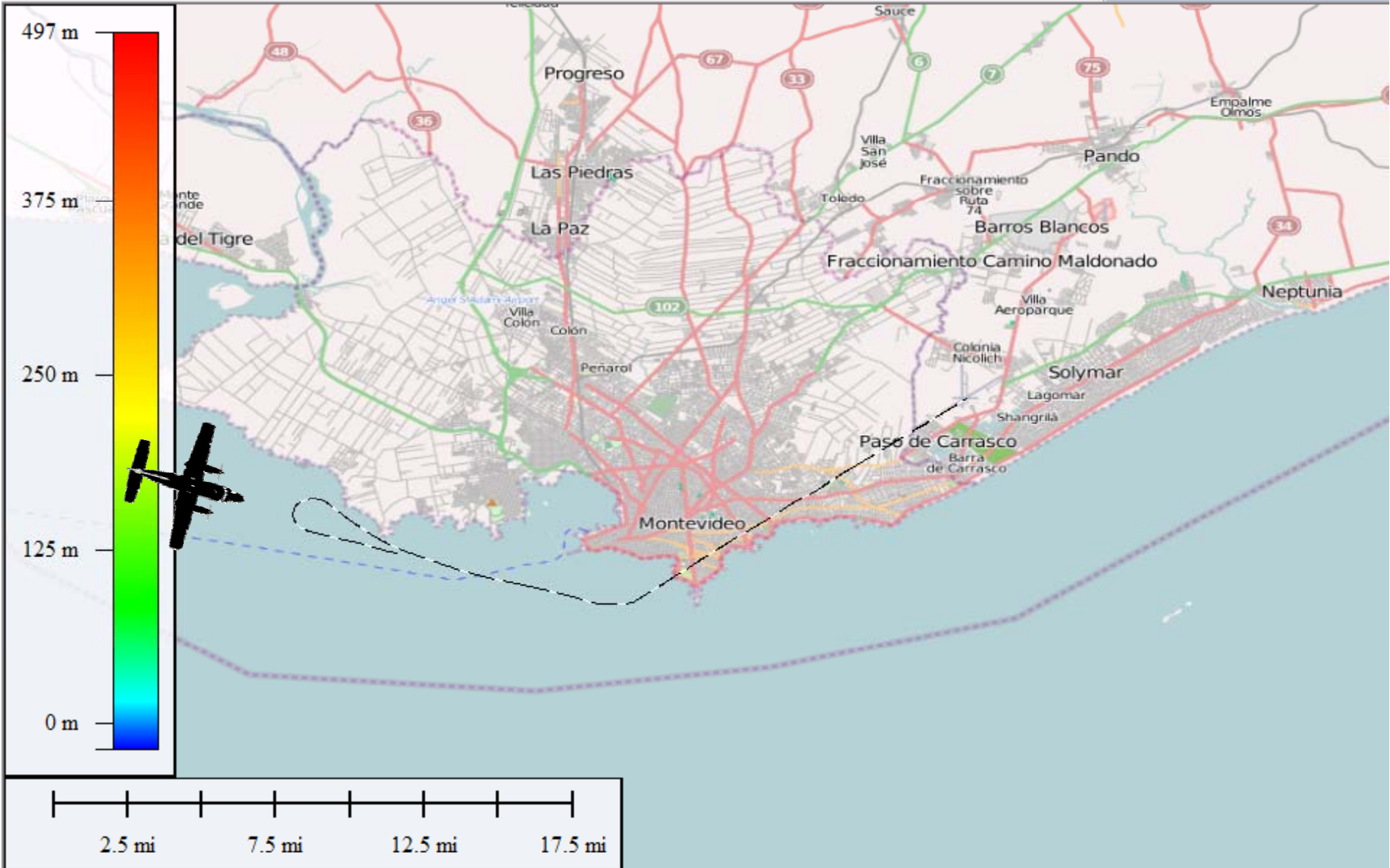
USO DEL ESPACIO AEREO



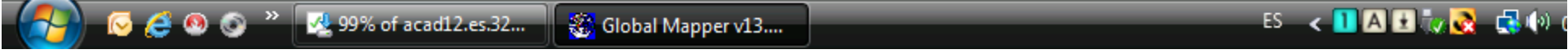
ANALISIS DE RNAV (GNSS)

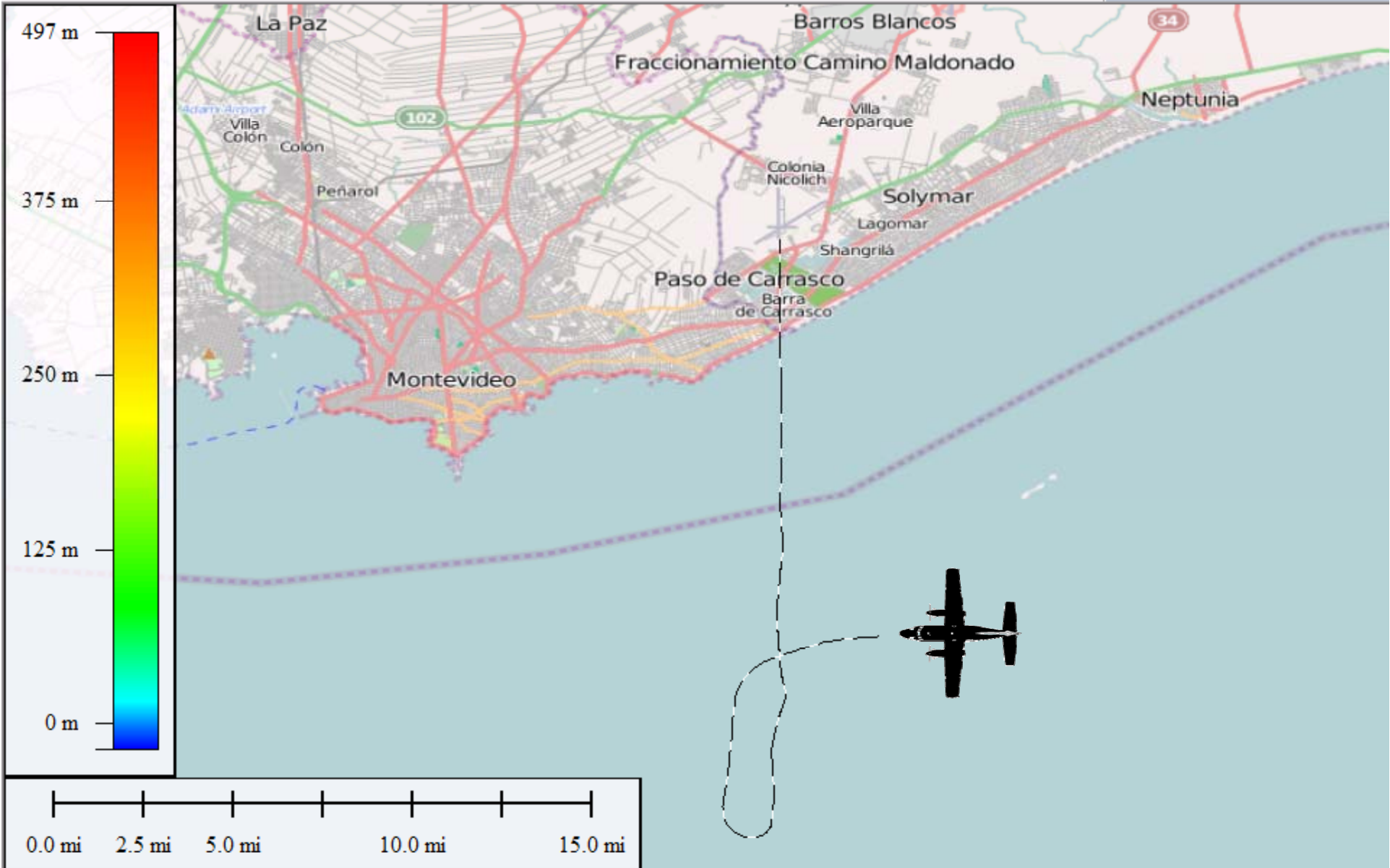
- EN VUELO
- EN LA OFICINA



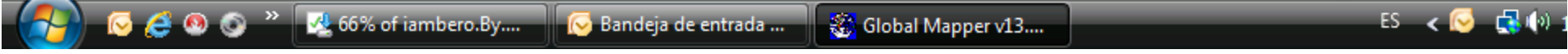


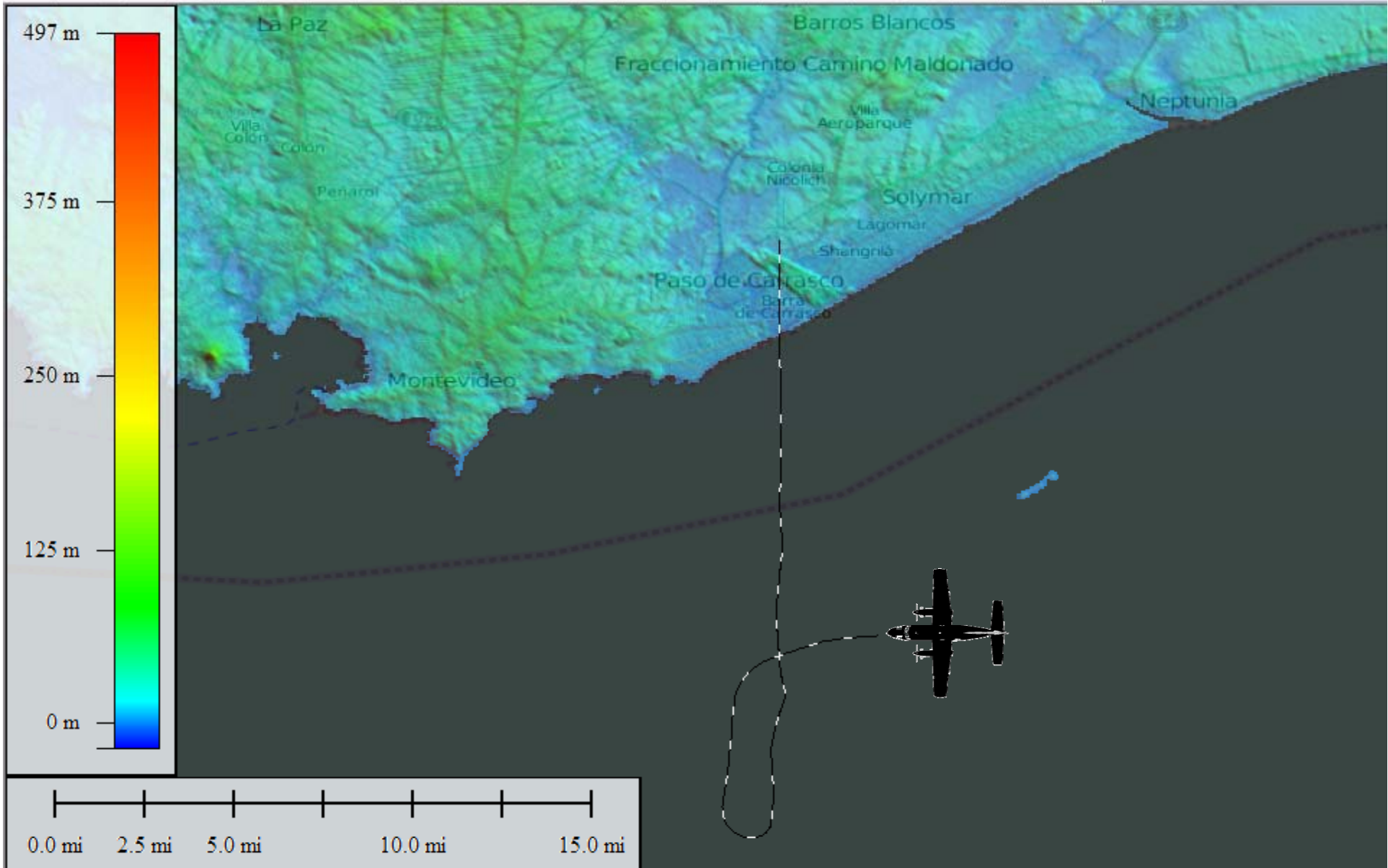
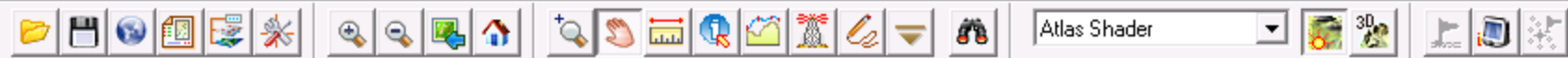
Height = 16 meters, RGB(241,238,232) - Pal Idx 240 (OpenStreetMap.org Global Street 1:296200 GEO (WGS84) - (-55.9297173437, -34.6686700456, 15.613 m) 34° 40' 7.2122" S, 55° 55' 4

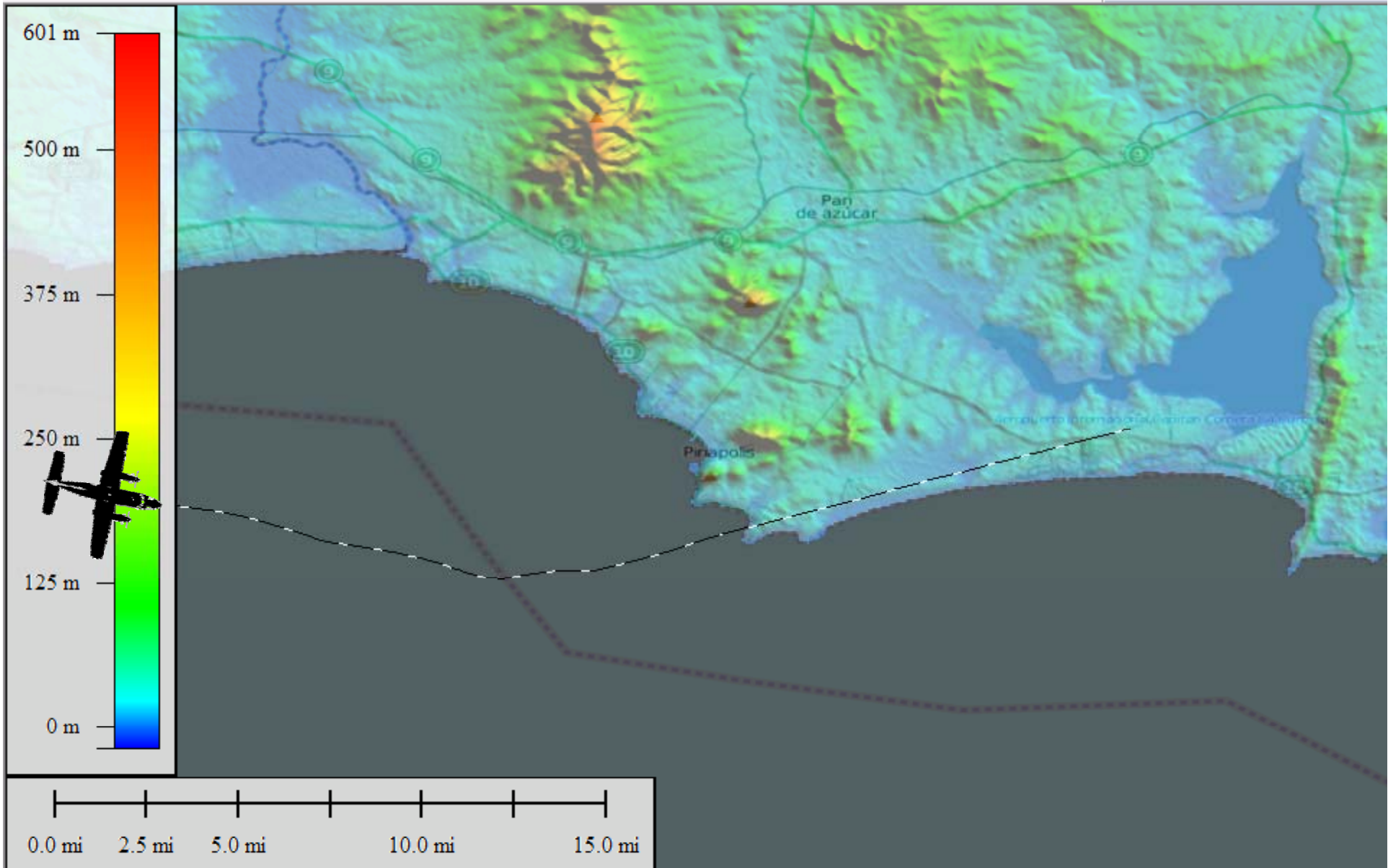
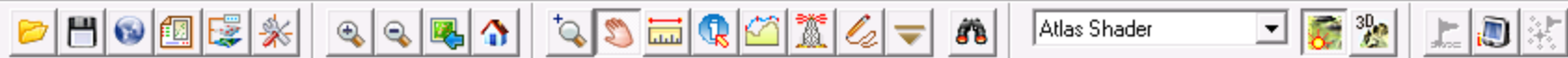


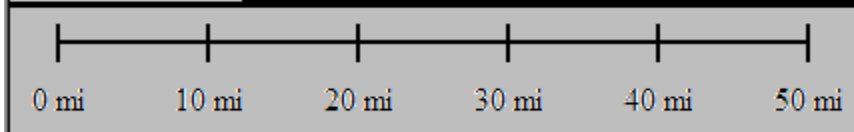
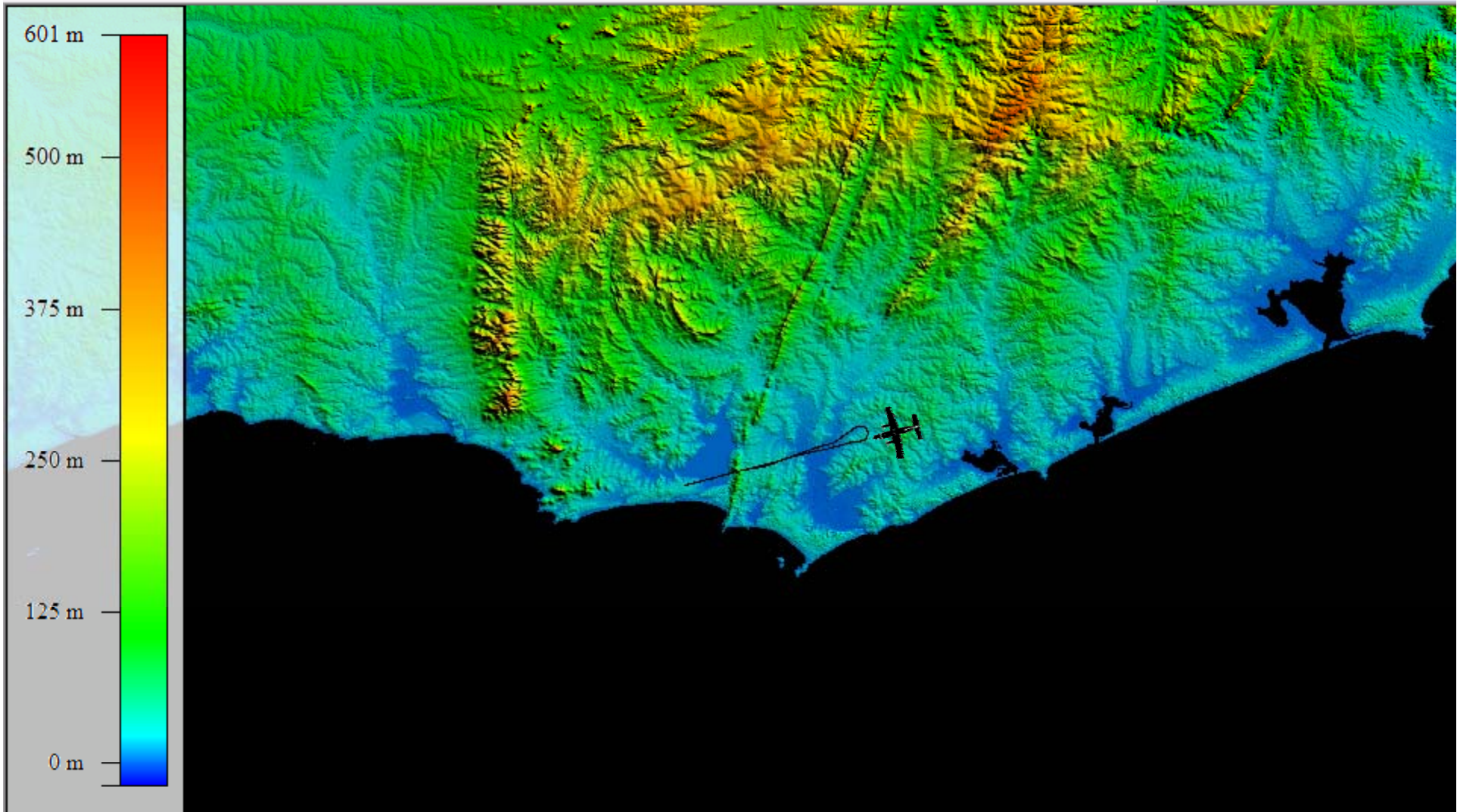


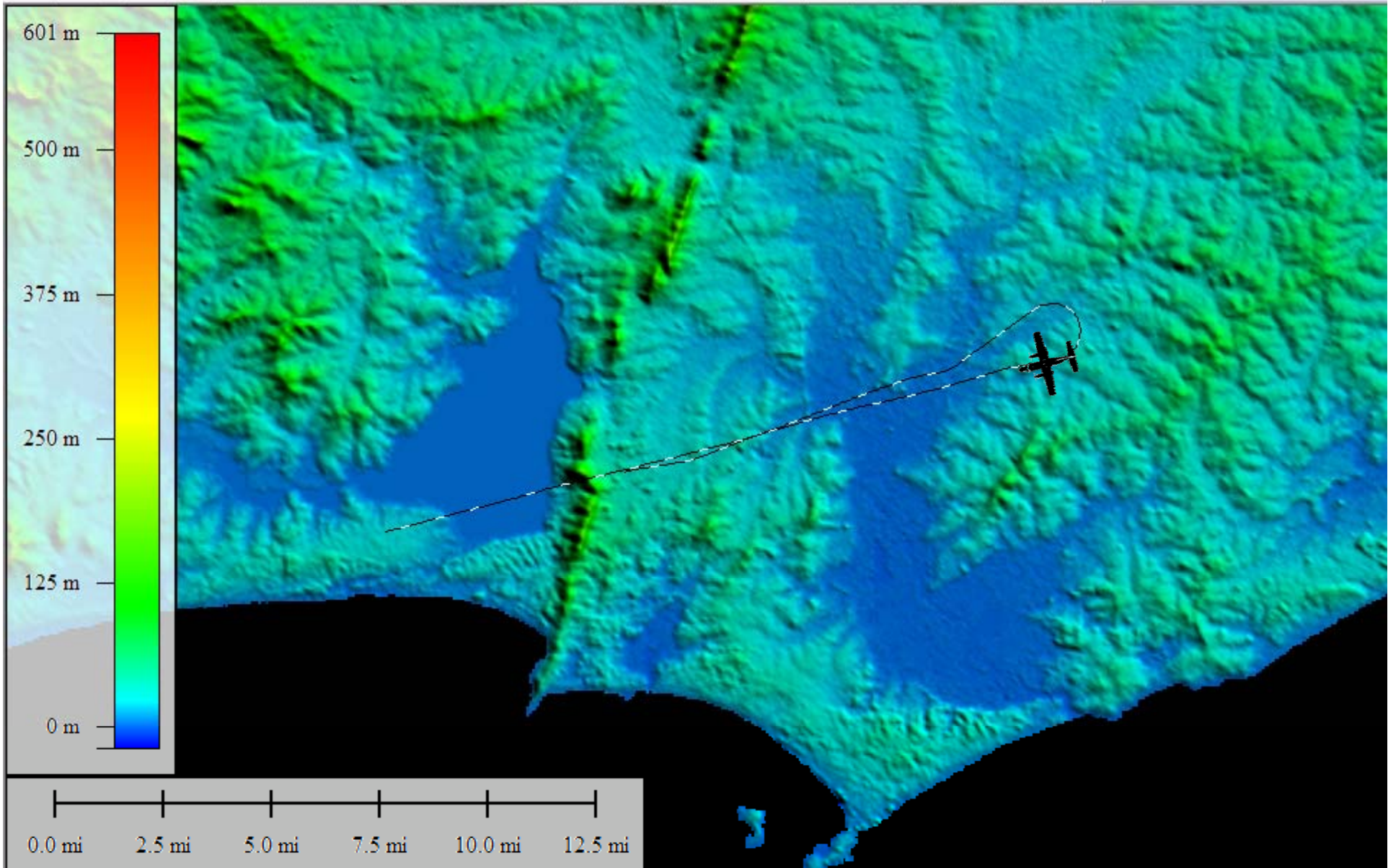
Create Rectangular/Square Line 1:244700 GEO (WGS84) - (-55.9024073404, -34.7473992476, 24.673 m) 34° 44' 50.6373" S, 55° 54'

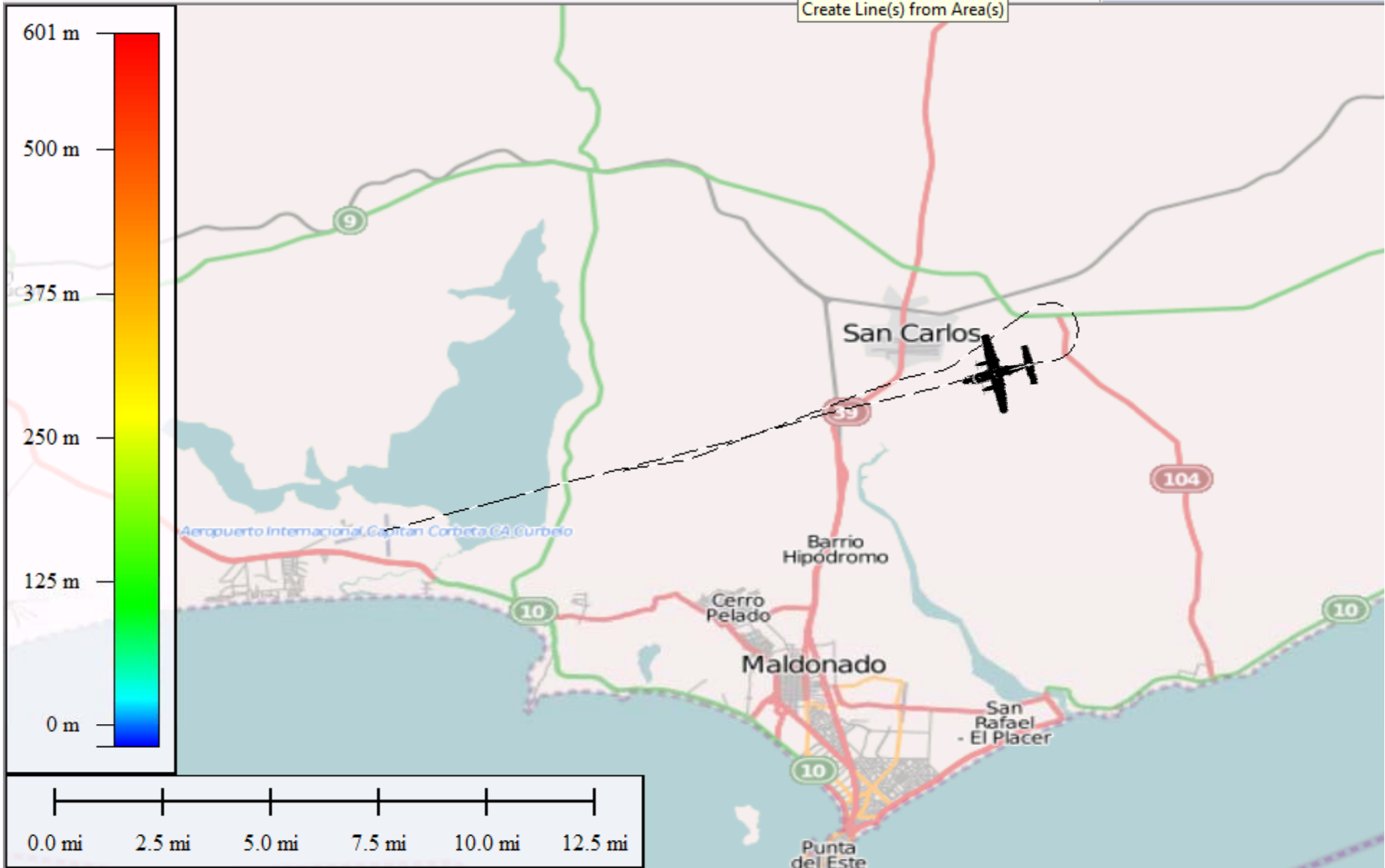
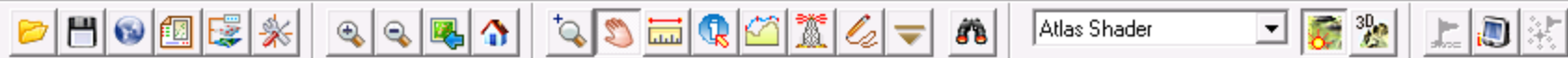


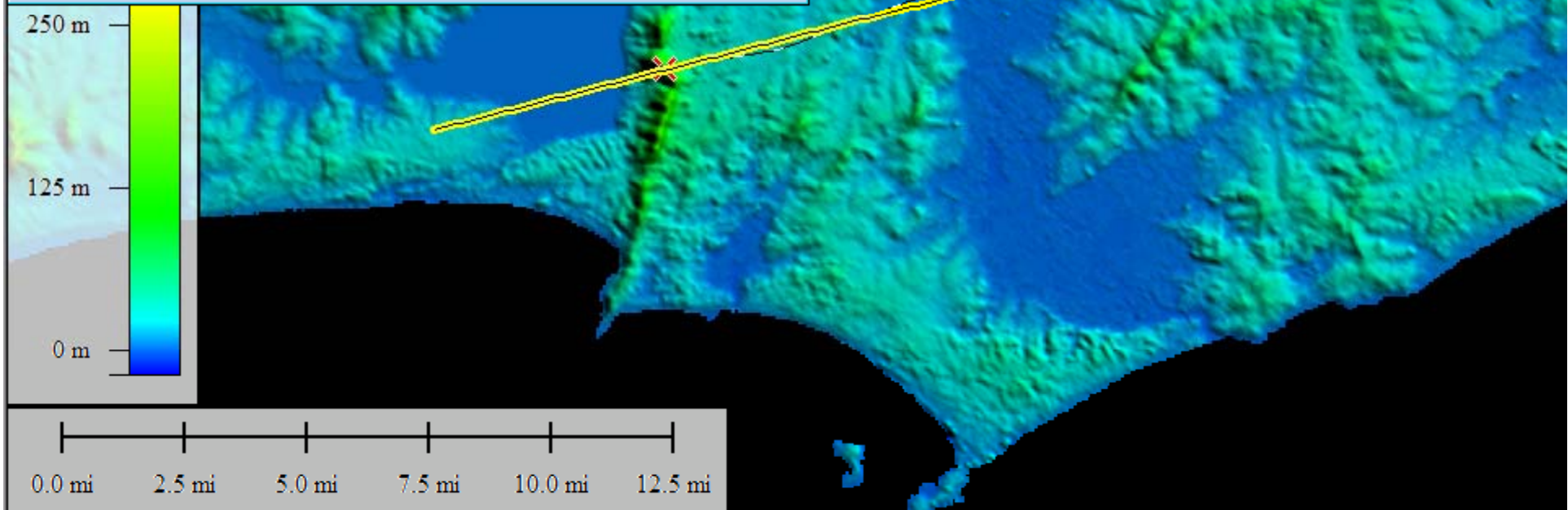
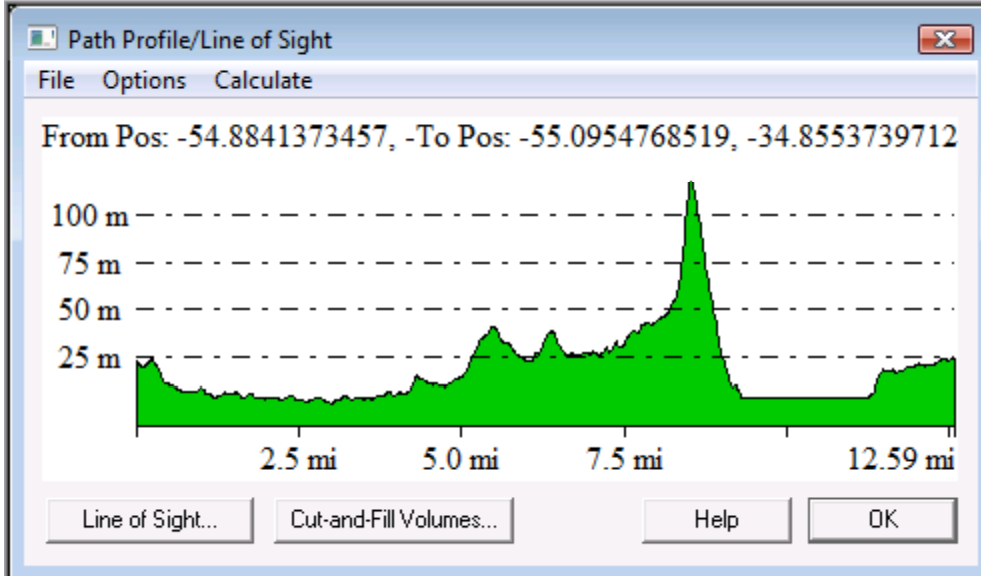




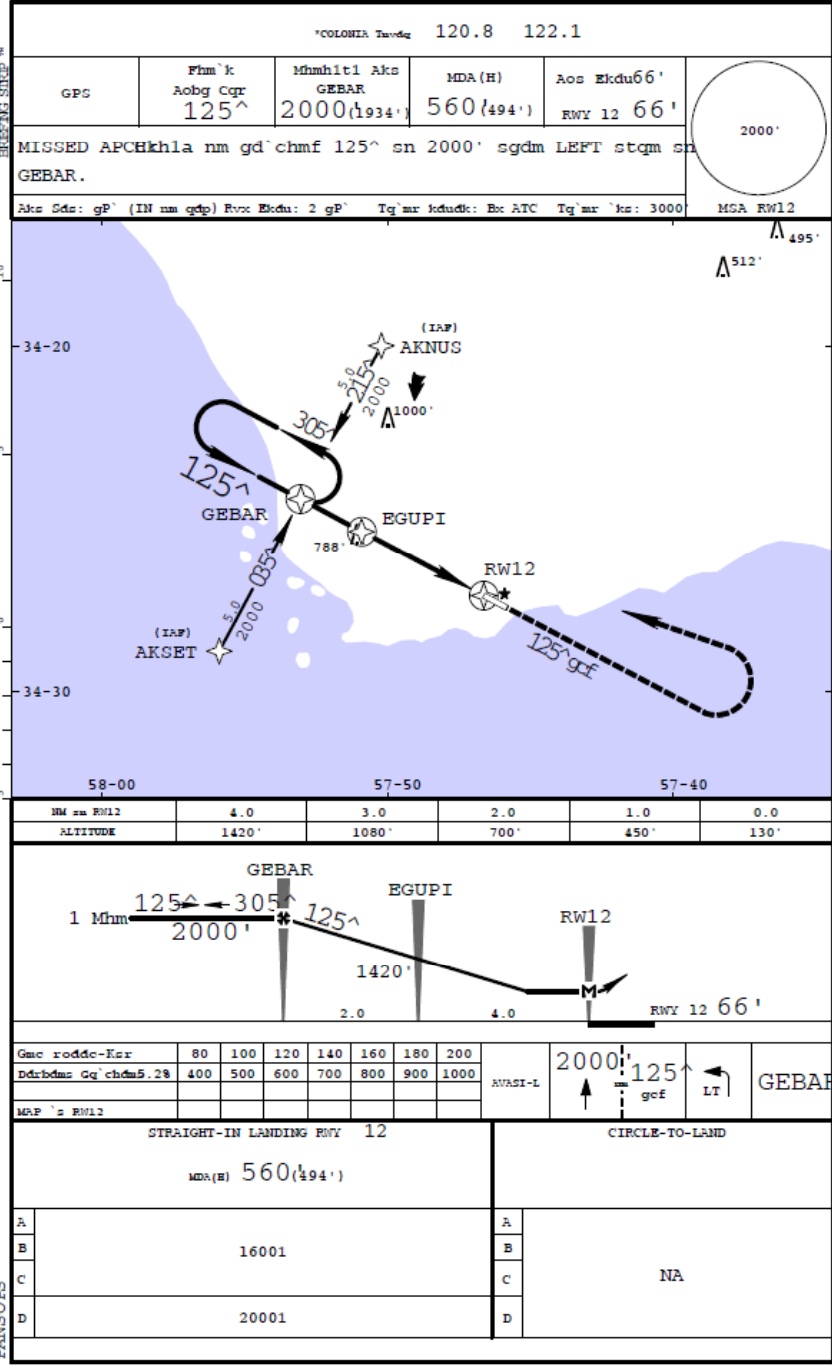




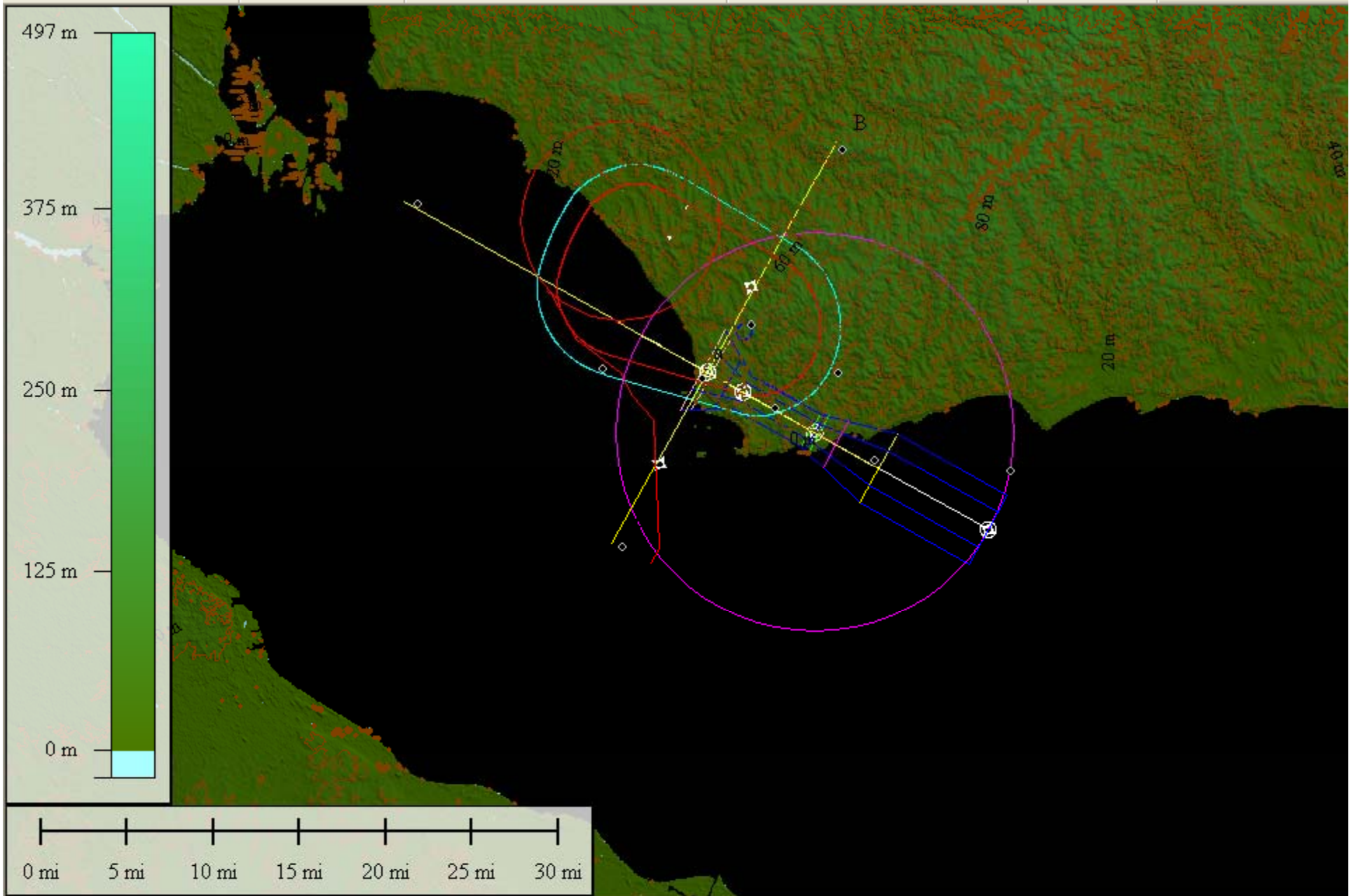


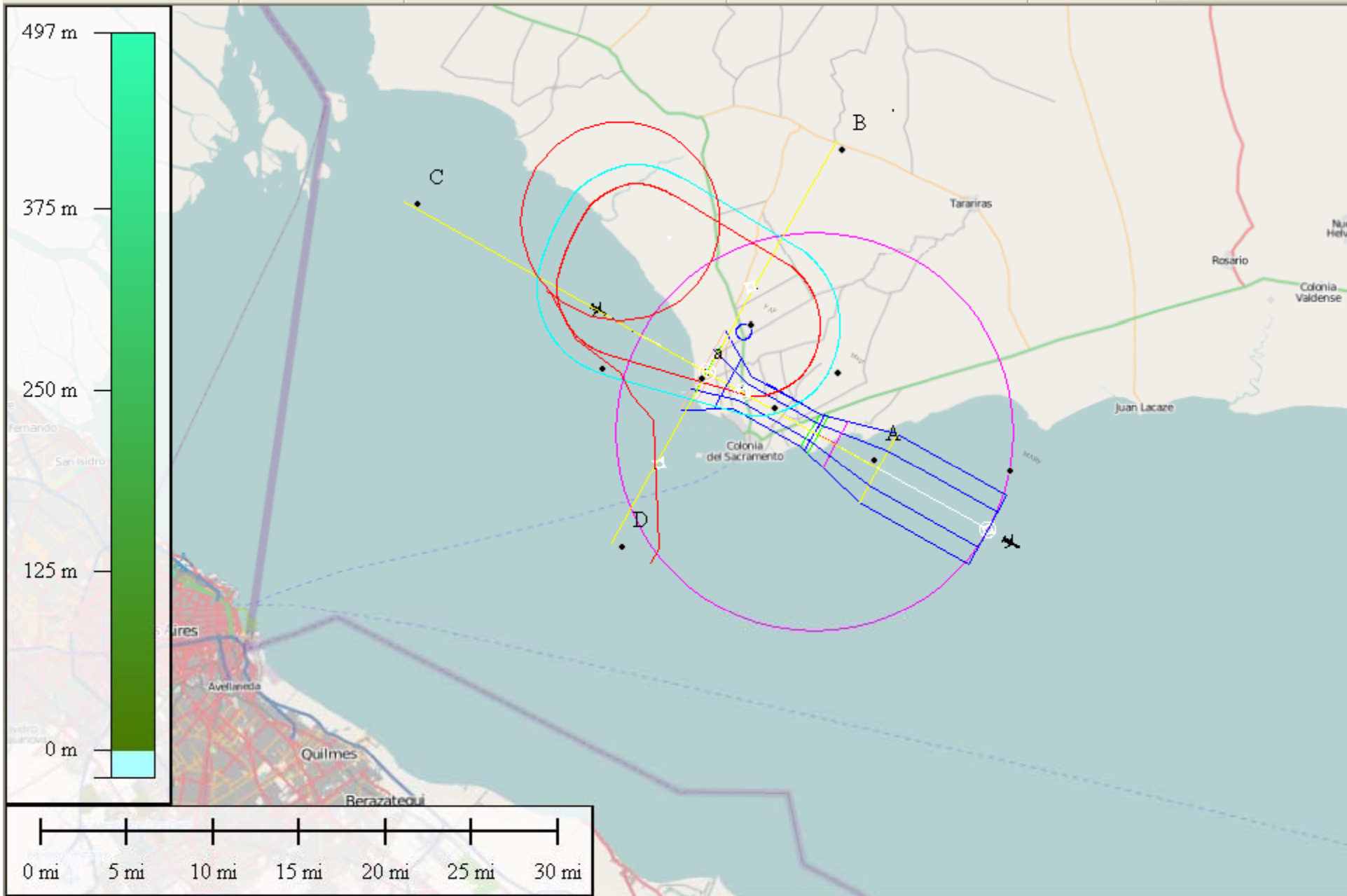


SUCA/CYR COLONIA, URUGUAY
 LAGUNA DE LOS PATOS INTL 24 SEP 04 (18-1) .Eee.30.Sdo. GPS RWX 12



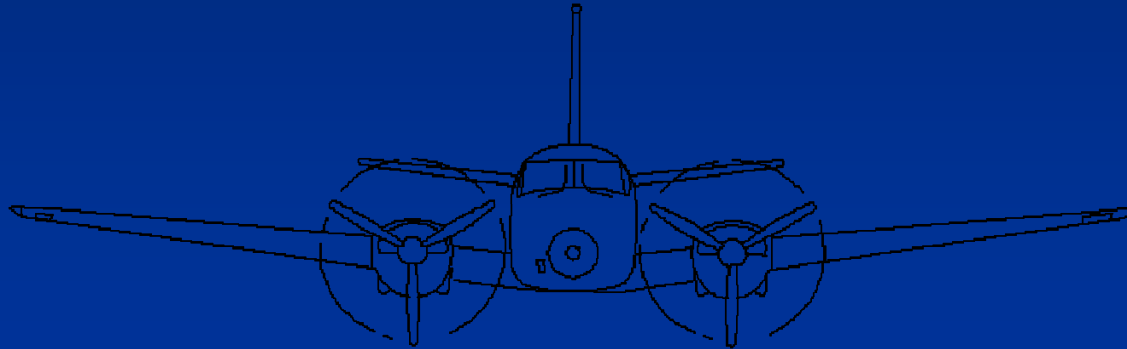
PANSOBS

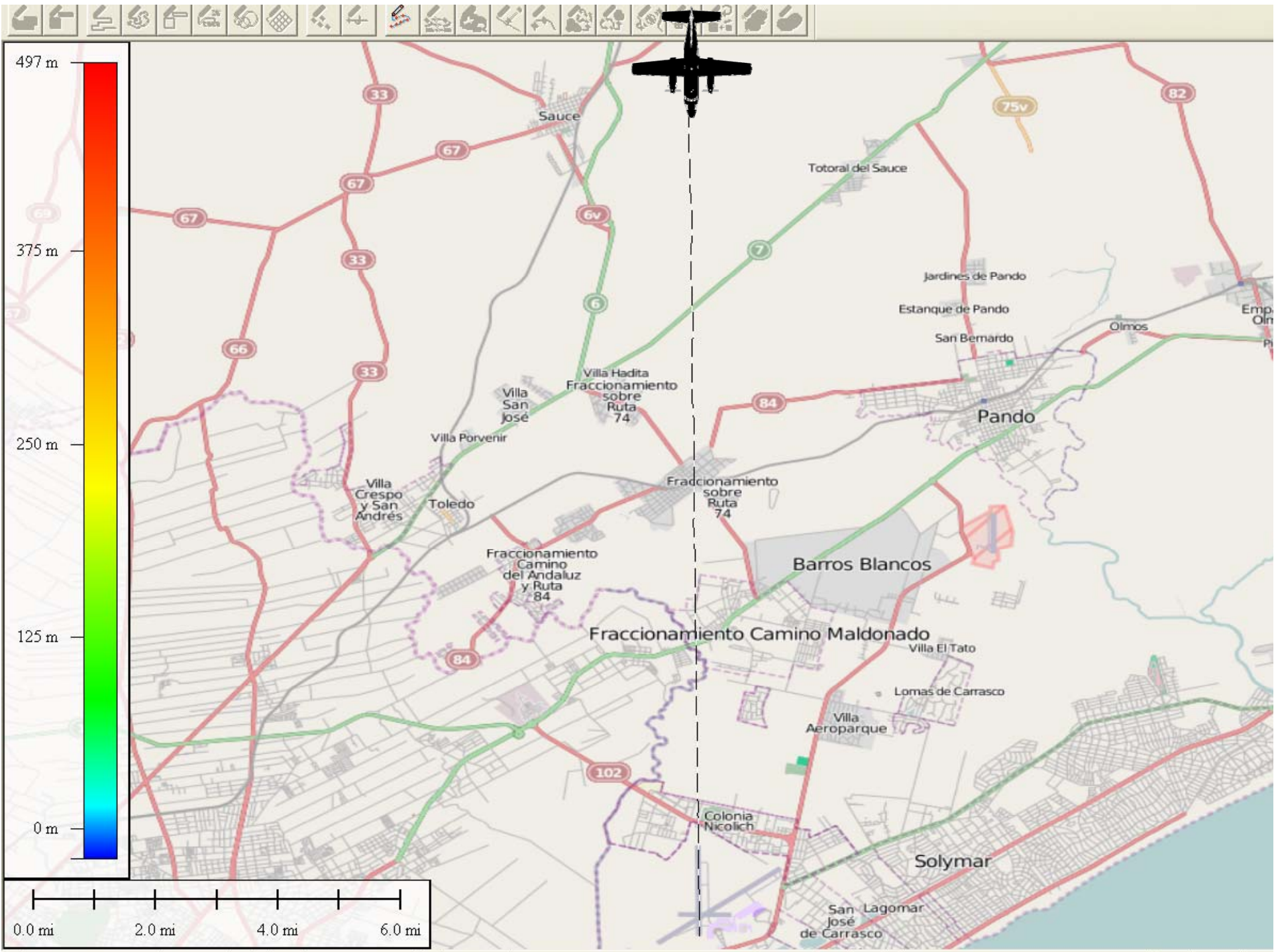




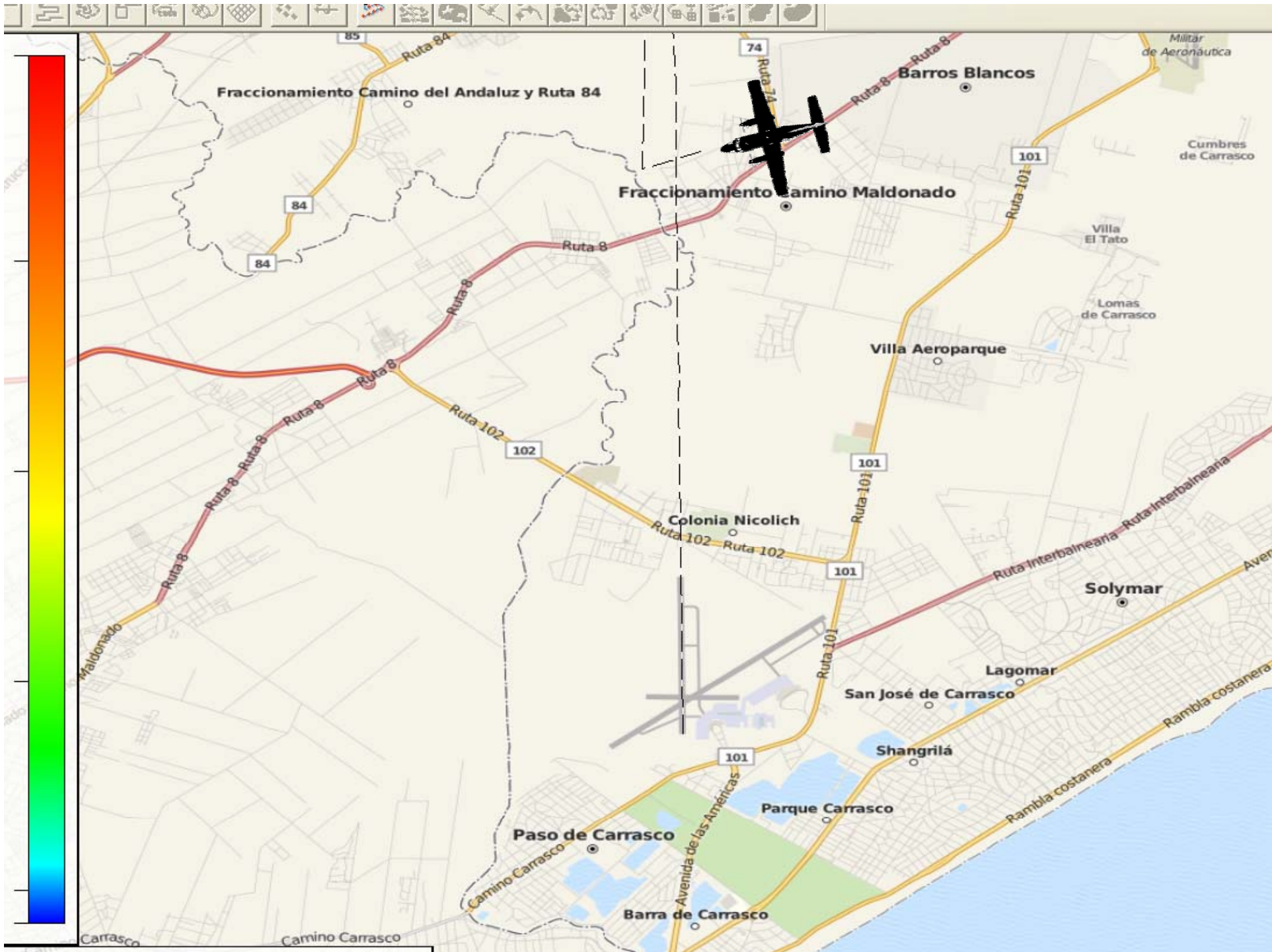
ANALISIS DE DATOS ILS

- ILS ICAR , IMVD









GRACIAS

