

Organizing an Airport Wildlife Hazard Control Program

CAR/SAM Regional Bird/Wildlife
Hazard Prevention Workshop

7 September 2011



Federal Aviation
Administration



WHAT IS AIRPORT WILDLIFE HAZARD MANAGEMENT?



A program that uses a variety of measures, resources, and tools to reduce the likelihood of a wildlife strike.



WHERE DO I START?

- **Airport Overview**
- **Wildlife Hazard Assessment**
- **Report**
- **Recommendations**
- **Develop Program**



AIRPORT OVERVIEW



WHAT IS A WILDLIFE HAZARD ASSESSMENT?

IDENTIFIES



Hazardous Species



Wildlife Attractants



Trends in Wildlife Use



WHAT IS A WILDLIFE HAZARD ASSESSMENT?

REDUCES RISK OF POTENTIAL FUTURE STRIKES



Operational Changes



Habitat Modification



**Customized Harassment
and Species Removal**



WHAT IS A WILDLIFE HAZARD ASSESSMENT?

EVALUATES



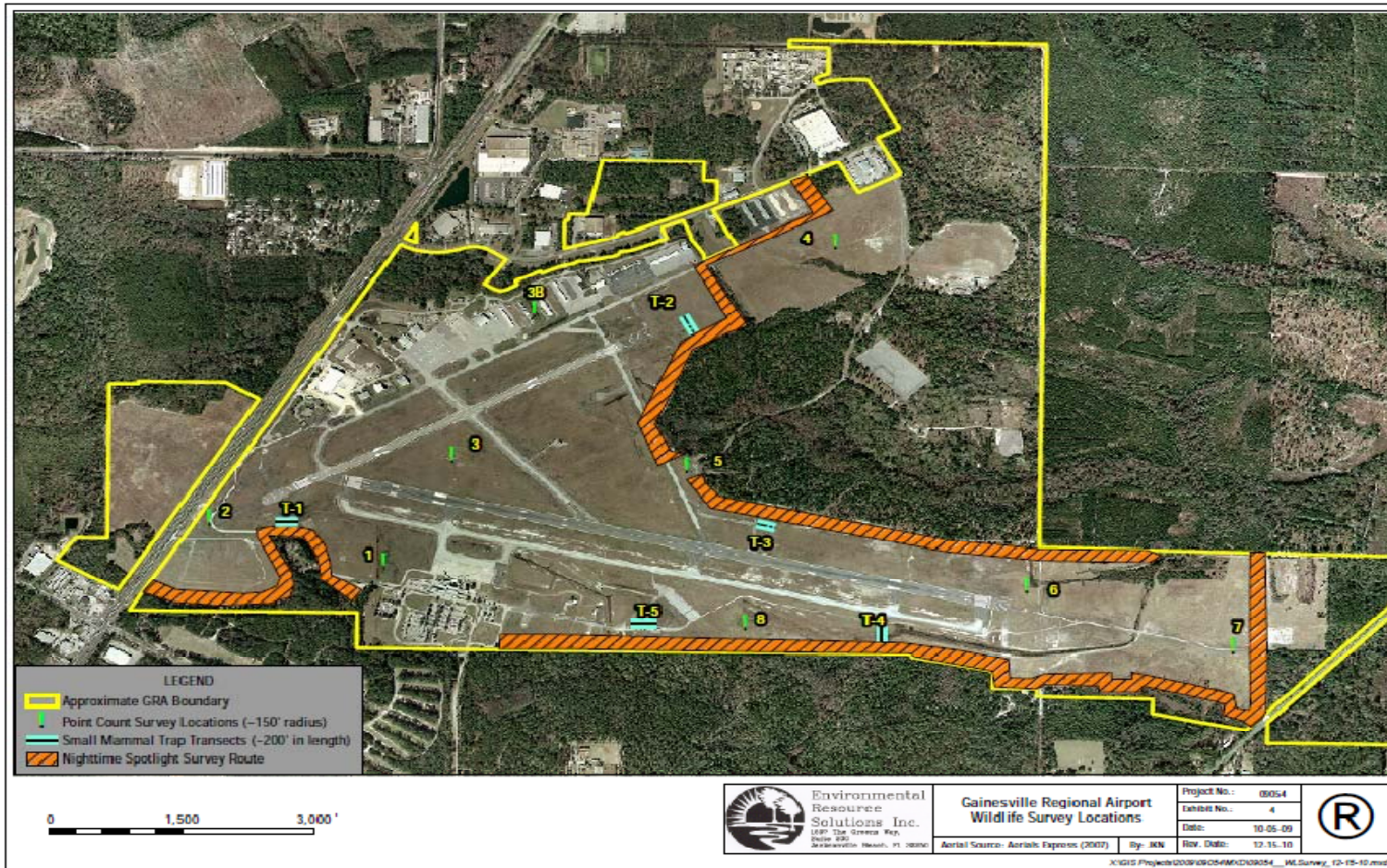
Overall risk of wildlife strikes



Efficacy of airport's wildlife mitigation plan



WHAT IS A WILDLIFE HAZARD ASSESSMENT?



Federal Aviation Administration

FAA 14 CFR 139.337 (c) The wildlife hazard assessment must contain at least the following:

An evaluation of...

- 
- (1) Strike Event**
 - (2) Wildlife**
 - (3) Attractants**
 - (4) Wildlife Hazards to Aircraft**
 - (5) Recommendations**



ELEMENTS OF THE REPORT

- 1. Description of triggering event**
- 2. Description of airport**
 - a. Type of airport**
 - b. Annual movements**
 - c. On-site habitat**
 - d. Surrounding land-use**
- 3. On-site and off-site wildlife attractants**
- 4. Survey methodology/dates**



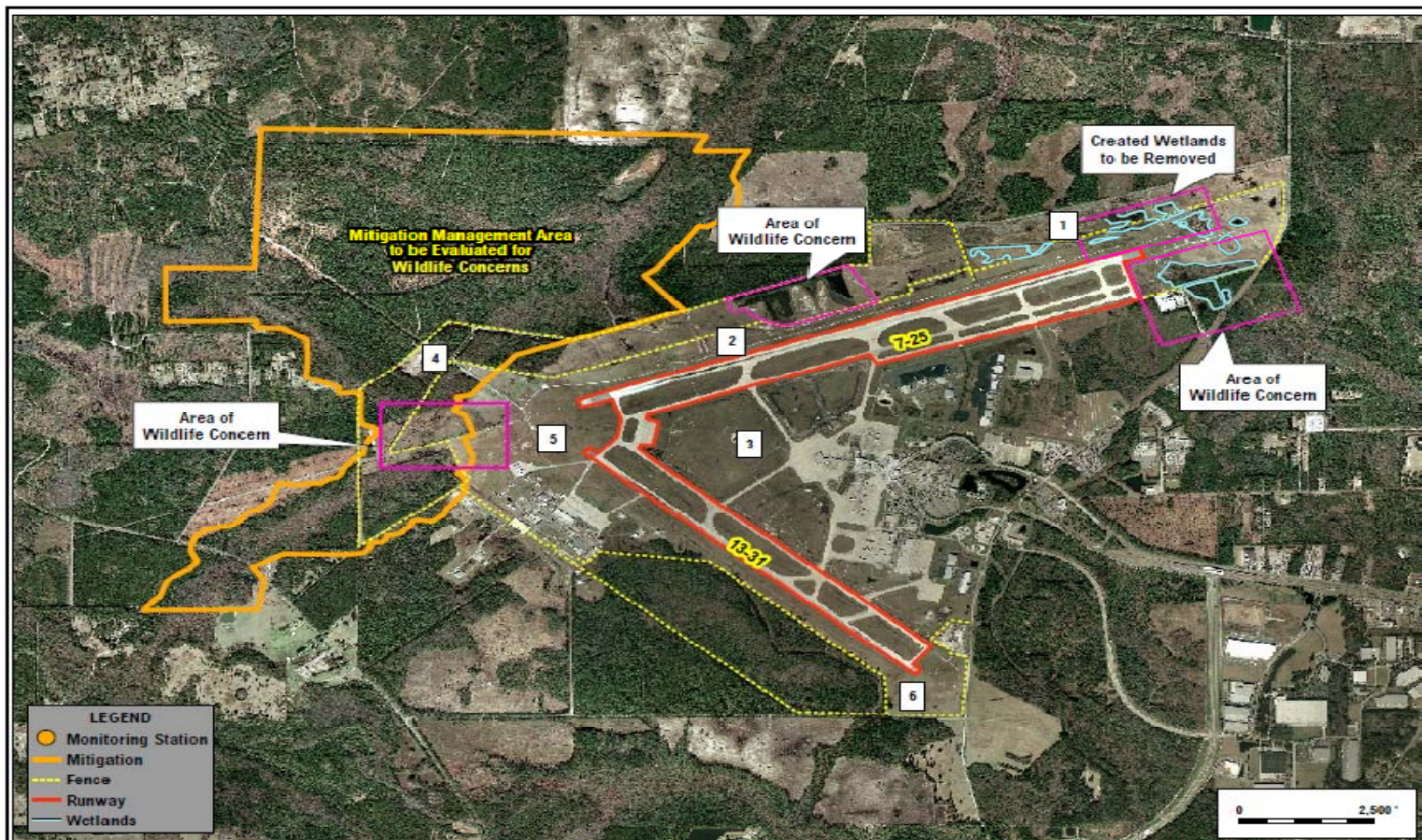
ELEMENTS OF THE REPORT

- 5. Results/survey data/trends**
- 6. Prioritized recommendations**
- 7. Maps/exhibits**
 - a. Map of airport and on-site survey points**
 - b. Map showing on-site attractants**
 - c. Map of 5,000ft, 10,000ft, 5 mile separation distances with off-site wildlife attractants**
 - d. Photo exhibits of observations and areas of concern**



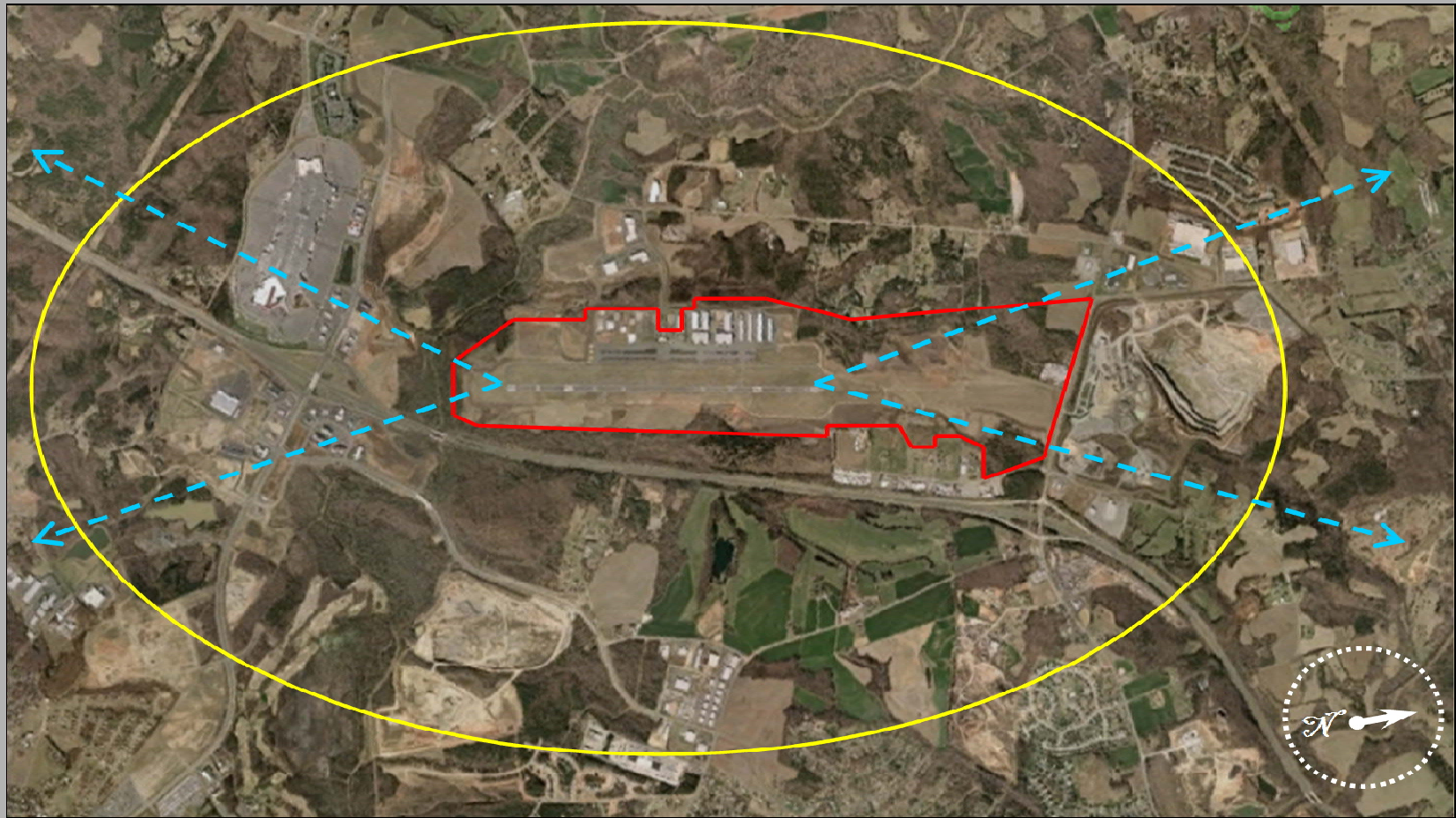
ELEMENTS OF THE REPORT

On-Site



ELEMENTS OF THE REPORT

Off-Site



RECOMMENDATIONS (Examples)

Issue:

Solution:

Deer/Large Mammals



Fence

Flocks of blackbirds



Harassment and/or removal of roosting trees

Wading birds feeding



Clear ditches of vegetation, steep slopes, rip-rap

Flocks of doves on airfield



Maintain grass height at 6-12” and remove bare patches



WILDLIFE HAZARD MANAGEMENT PLAN

WHA provides the scientific basis for a WHMP...

1. **Authorities and responsibilities**
2. **Prioritization of WHA actions with target dates for initiation and completion**
3. **Wildlife hazard management procedures**
4. **Habitat management**
5. **Permits (local, state, and federal)**
6. **Resources**
7. **Training**
8. **WHMP review / evaluation**
9. **Wildlife Management Working Group**

WILDLIFE HAZARD MANAGEMENT PLAN

➤ Wildlife Hazards Working Groups

- For many airports, the establishment of a Wildlife Hazards Working Group (WHWG) will greatly facilitate necessary communication, cooperation, and coordination



WILDLIFE HAZARD MANAGEMENT PLAN



Coordination with government agencies



Questions??

