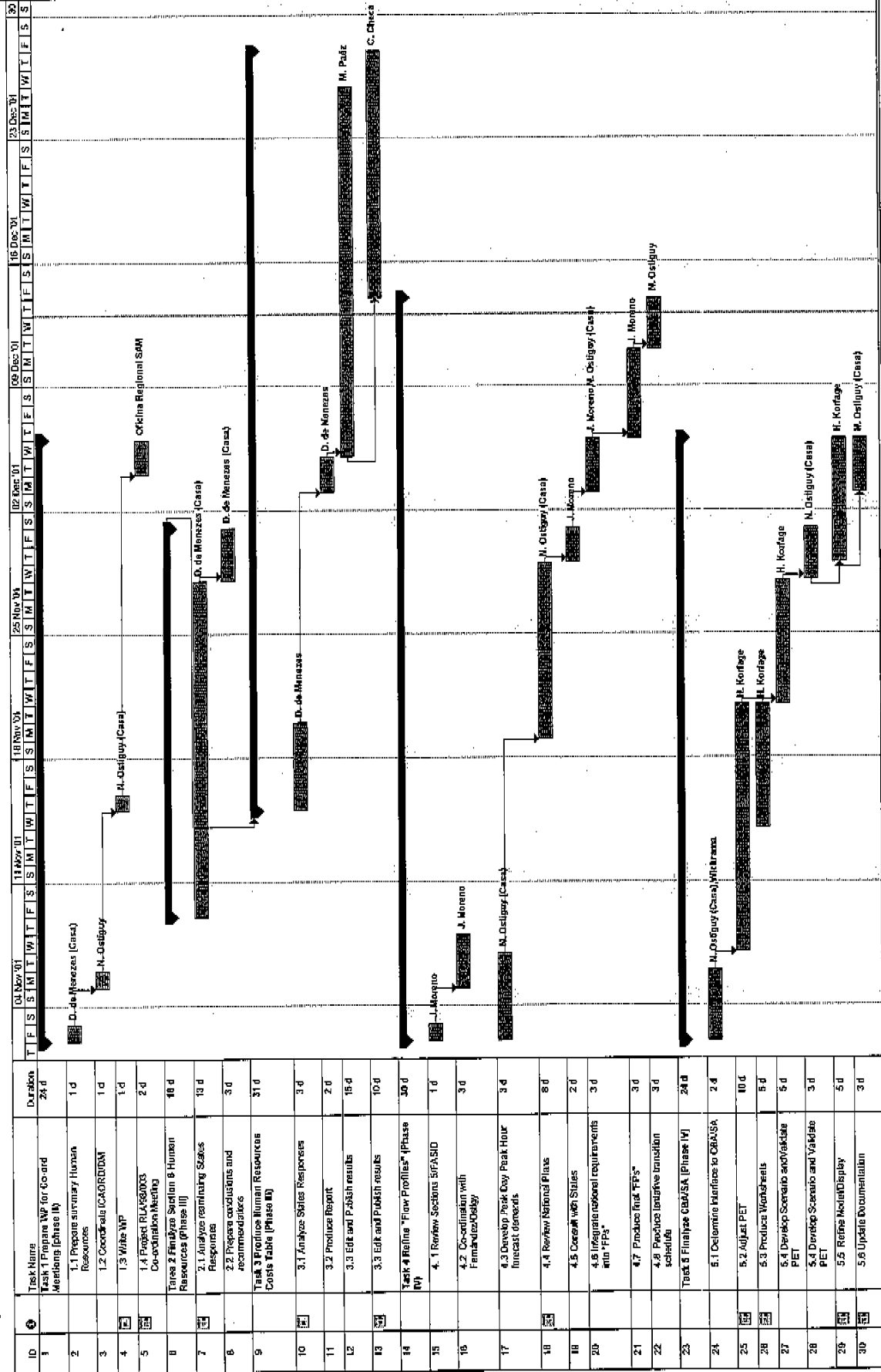


APPENDIX B

Project RLJ/98/003
Transition to CNS/ATM Systems
Year 2001 Programme
Tasks 1 to 5



Legend for Gantt chart symbols:

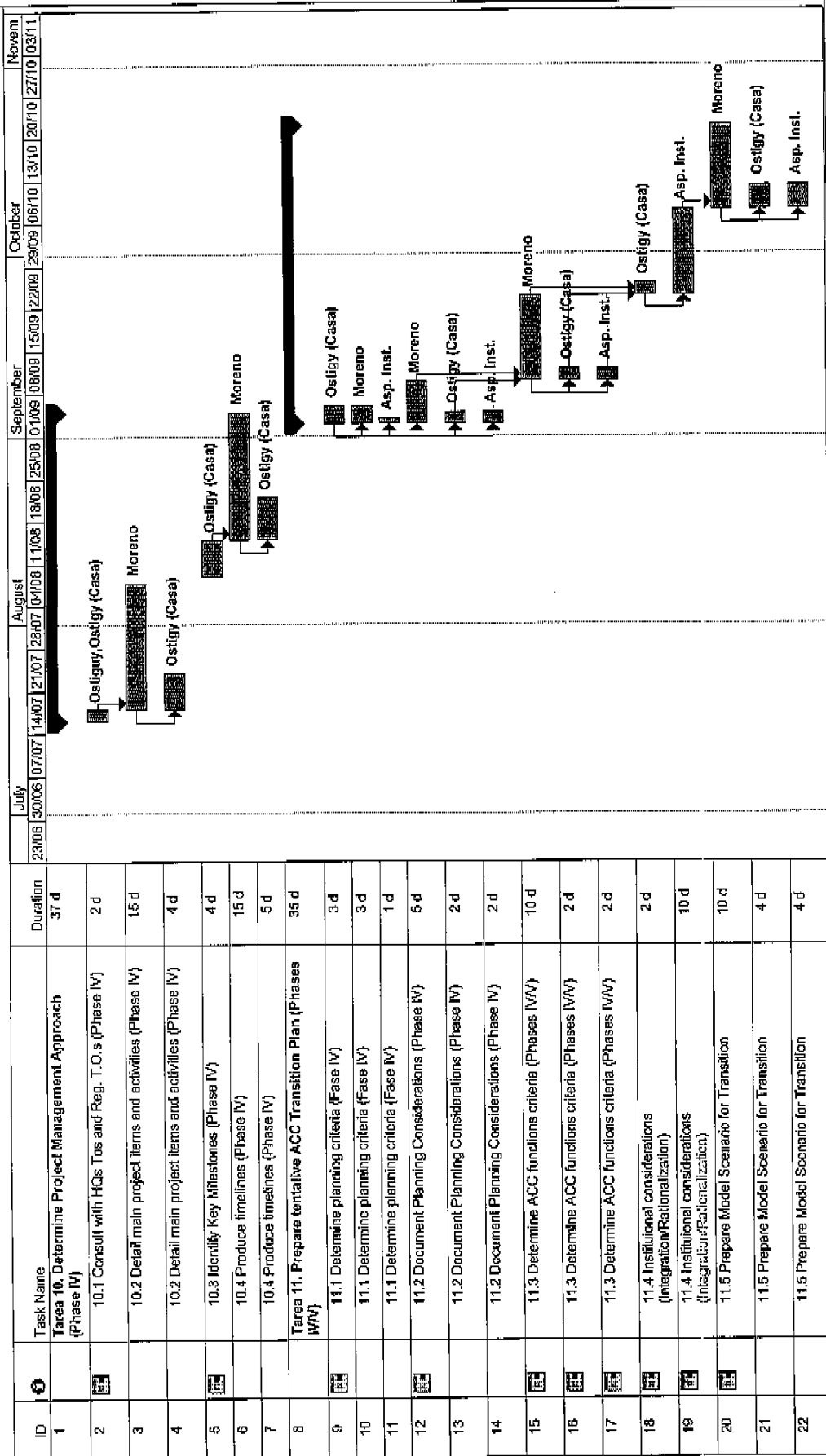
- Progress Milestone
- Summary
- External Tasks
- External Milestone
- Deadline

Task Spt

Project RLJ/98/003 Year 2001A
Date: Thu 14/12/01

APPENDIX B

**Project RLA/98/003
Transition to CNS/ATM Systems
Second Half 2002
Tasks 10 and 11**



External Tasks

External Milestone

Deadline

Milestone

Summary

Project Summary

Task

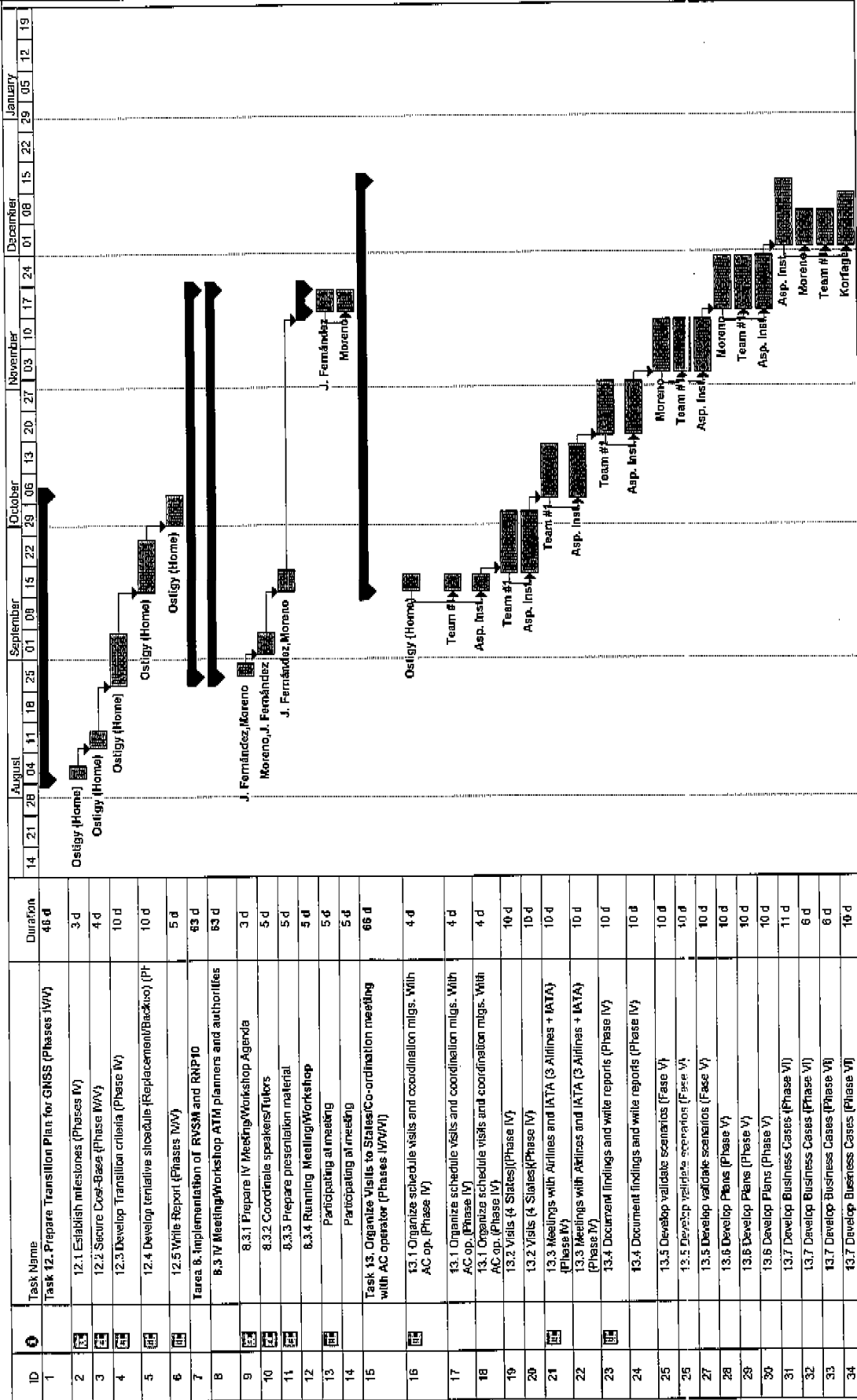
Split

Progress

Project: Tasks 10 and 11
Date: Thu 13/12/01

APPENDIX B

Project RL/A/98/003
Transition to CNS/ATM Systems
Second Half 2002
Tasks 12, 8.3 y 13



Legend for Gantt chart symbols:

- Task
- Split
- Progress
- Milestone
- Summary
- Project Summary
- External Tasks
- External Milestone
- Deadline

Project: Tasks 12 to 13
Date: Thu 13/12/01

Page 5 de 5

APPENDIX C

Project RLAV98/003
Transition to CNS/ATM Systems
Year 2001 Programme
Tasks 1 to 5



ID	Resource Name	Work 40 hrs 24 hrs	November				December				January				February				
			26/10	04/11	11/11	18/11	25/11	02/12	09/12	16/12	23/12	30/12	06/01	13/01	20/01	27/01	03/02	10/02	17/02
1	D. de Menezes 3.1 Analyze States Responses	40 hrs 24 hrs			16h	16h													
2	N. Ostigny 3.2 Produce Report 7.2 Coordinate ICAD/RD/M 4.6 Produce tentative transition schedule	16 hrs 32 hrs 8 hrs 24 hrs		8h	8h					16h	24h								
3	J. Moreno 4.1 Review Sections 5/FASID 4.2 Co-ordination with Fernandez/Ostigny	8 hrs 8 hrs 24 hrs	8h	24h					16h	40h	8h								
4	H. Korfige 5.2 Adjust PET 5.3 Produce Worksheets and/candidate PET 5.4 Develop Scenario 5.5 Refine Model/Display 1.3 Write WPP	200 hrs 80 hrs 40 hrs 40 hrs 40 hrs 184 hrs 8 hrs	24h	24h	64h	56h	32h	24h	16h	24h	8h	24h	16h	24h	40h	48h			
5	N. Ostigny (Case) 4.3 Develop Peak Day Peak Hour forecast demands 4.4 Review National Plans	24 hrs 64 hrs	8h	16h															
6	D. de Menezes (Case) 1.1 Prepare summary Human Resources 2.1 Analyze remaining States Responses 2.2 Prepare conclusions and recommendations	136 hrs 8 hrs 104 hrs 24 hrs	8h	8h	40h	40h	40h	40h	40h	16h	24h								
7	Wickrama 5.1 Determine Interface to CBA/SA	16 hrs 16 hrs	8h	8h						16h									
8	Oficina Regional SAM 1.4 Project RLAV98/003 Co-ordination Meeting	16 hrs 16 hrs																	
9	M. Palés 3.3 Edit and Publish results	120 hrs 120 hrs								40h	40h	16h							
10	C. Checa 3.3 Edit and Publish results	80 hrs 80 hrs								24h	40h	40h	16h	40h	40h	40h	32h		

APPENDIX C

Project RL/A/98/003
Transition to CNS/ATM Systems
First Half of 2002

ID	Resource Name	Work	March		April		May		June		July		August															
			03/03	10/03	17/03	24/03	31/03	07/04	14/04	21/04	28/04	05/05	12/05	19/05	26/05	02/06	09/06	16/06	23/06	30/06	07/07	14/07	21/07	28/07	04/08	11/08	18/08	
1	N. Deshay	24 hrs 9.1 Prepare format and Cons. 9.2 Write "State Profiles" (Pht 9.4 Review technical criteria/Phase																										
2	U. Mibtrana	40 hrs Participating at Seminar																										
3	H. Konfage	40 hrs Participating at Seminar																										
4	O. Smarell	136 hrs 7.1 Prepare Seminar/MS Work P 7.2 Co-ordinate Speakers/Tutors																										
		16 hrs 7.3 Prepare presentation material																										
		40 hrs 7.4 Running Seminar																										
5	D. de Menezes	40 hrs Participating at Seminar																										
6	J. Moreno	4 hrs 8.1.2 Co-ordinate speakers/Tu 16 hrs 8.1.2 Co-ordinate speakers/Tu 16 hrs 6.3 Prepare presentation mat 40 hrs Participating at Workshop/Me 40 hrs Participating at Seminar 24 hrs 9.1 Prepare format and Consulat																										
		120 hrs 9.2 Write "State Profiles" (Phase I 80 hrs 9.3 Review Operational criteria (P)																										
7	J. Fernandez	208 hrs 8.1.2 Co-ordinate speakers/Tu 16 hrs 8.1.2 Co-ordinate speakers/Tu 16 hrs 6.3 Prepare presentation mat 40 hrs Participating at Workshop/Me 40 hrs 8.2.1 Prepare Seminar/MS W 8 hrs 8.2.2 Co-ordinate Speakers/T 16 hrs 8.2.3 Prepare presentation m 32 hrs Participating at Seminar 40 hrs SAM Regional Office																										
		40 hrs Running Seminar 40 hrs Participating at Seminar																										
		320 hrs Exp. Inst. Aspects 40 hrs Participating at Seminar																										
		80 hrs 7.3 Prepare presentation mat 24 hrs 9.1 Prepare format and Cons. 96 hrs 9.2 Write "State Profiles" (Pht 80 hrs 9.3 Prepare Consultation Progr																										
8	ICAO HQs	80 hrs Running Seminar 40 hrs Participating at Seminar																										
9	Ostly (Casa)	40 hrs 6.1 Prepare Seminar/MS Wor 8 hrs 6.2 Co-ordinate Speakers/Tu 16 hrs 6.3 Prepare presentation mat																										
10		32 hrs Participating at Seminar																										
11		32 hrs Participating at Seminar																										

