

# Archer Aviation

2024 - Company Overview



► Company Overview

Raised ~\$1.5B to Date

**FOUNDED IN 2018, LISTED ON NEW YORK STOCK EXCHANGE IN 2021**

2025 Commercial Launch Target

**PLANNING INITIAL MARKETS INCLUDING ABU DHABI, NYC, AND LOS ANGELES**

Proprietary Powertrain Technology

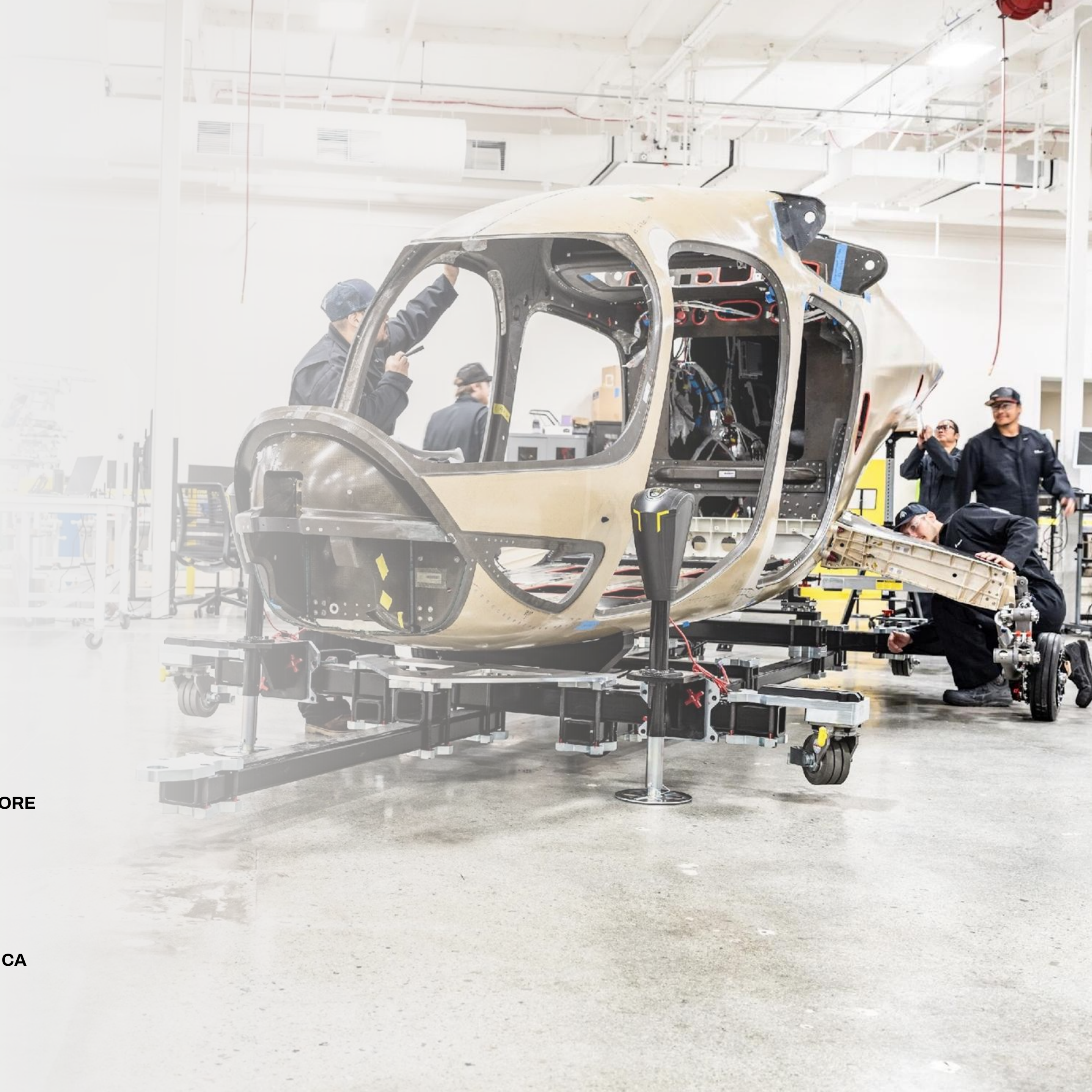
**BUILDING KEY ENABLING TECHNOLOGIES IN-HOUSE TO ELECTRIFY AVIATION**

World-Class Operating Partners

**INCLUDING UNITED AIRLINES, STELLANTIS, INTERGLOBE, KAKAOMOBILITY, AND MORE**

~900 Person Workforce

**~2/3 WORKFORCE ENGINEERING & CERTIFICATION. HEADQUARTERS IN SAN JOSE, CA**



MARKET NEED

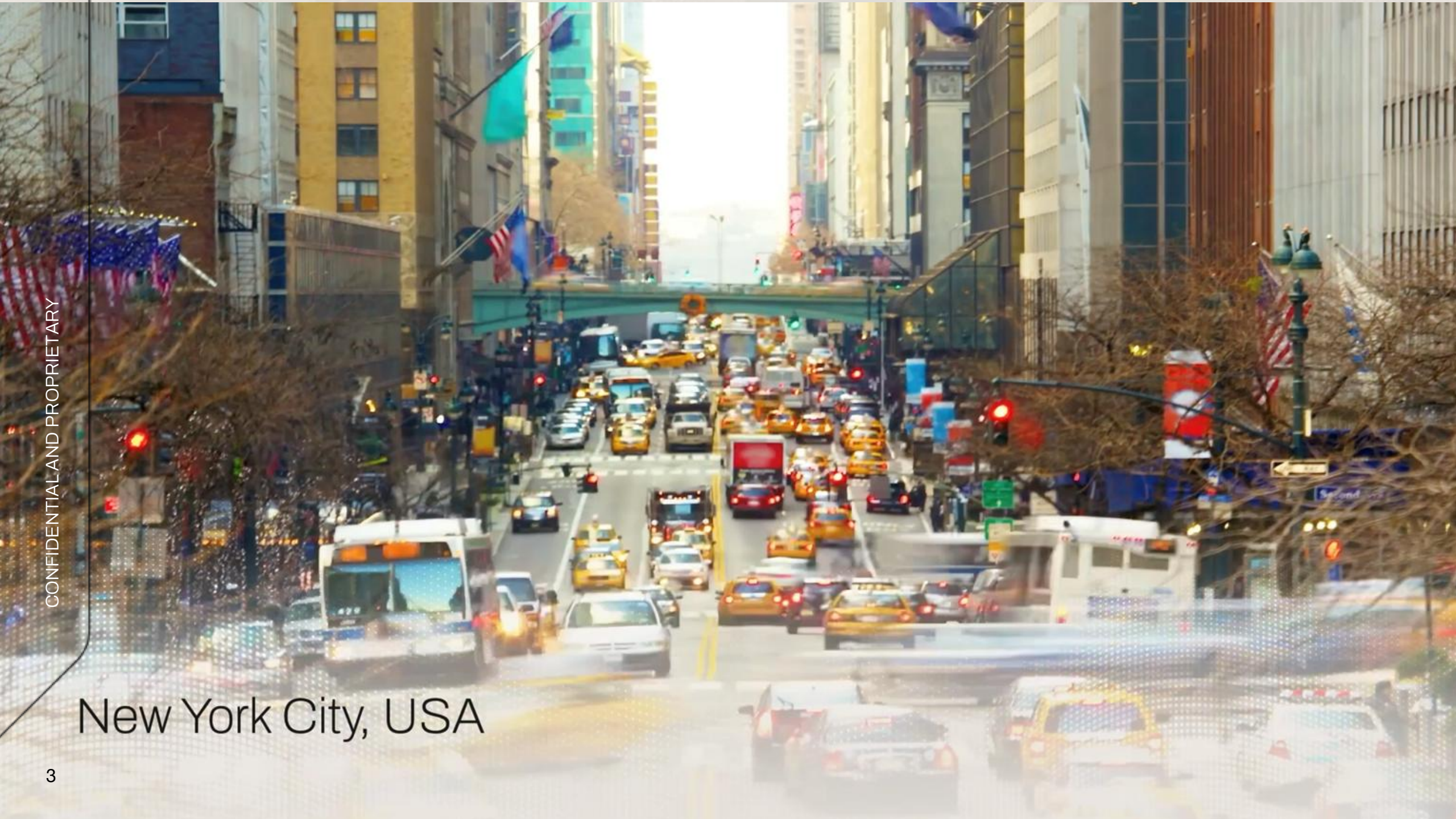
# Urban Congestion Is Not Sustainable



Los Angeles, USA



Mumbai, India



New York City, USA



Dubai, UAE

We live in three dimensions, but urban transportation has been historically constrained to a two-dimensional grid



Car  
60-90 MINS

Rail  
60-80 MINS

Air  
~10 MINUTES

EWR

NYC

▶ Planned Route: Downtown Manhattan to Newark Airport in ~10 mins by Air

HOME-TO-AIRPORT

# Traditional Helicopters Have Not Scaled



Noise

DISRUPTIVE TO COMMUNITIES

Safety

NEGATIVE CONSUMER PERCEPTION

Cost

UNAFFORDABLE FOR MOST

TARGET SPECIFICATIONS

# Archer Midnight



4 passengers + 1 pilot

**PAYLOAD TARGETING**  
~1,000 LBS

100x Quieter

**THAN HELICOPTERS\***  
(~45 DBA IN CRUISE)

150 mph / 240 kmh

**MAXIMUM**  
**SPEED**

Redundant Systems

**TARGETING SAFETY AT SIMILAR**  
**LEVELS TO COMMERCIAL AIRLINERS**

WING ENABLES UP TO 20 MILE GLIDE &  
CONVENTIONAL TAKEOFF/LANDING

100 miles / 150 km

**MAXIMUM**  
**RANGE**

Zero Operating Emissions

**SUSTAINABLE &**  
**ALL-ELECTRIC**

# U.S. Launch Markets



NEW YORK CITY



LOS ANGELES



SAN FRANCISCO BAY AREA



MIAMI

# eVTOL Use Cases



MILITARY



CARGO



TOURISM



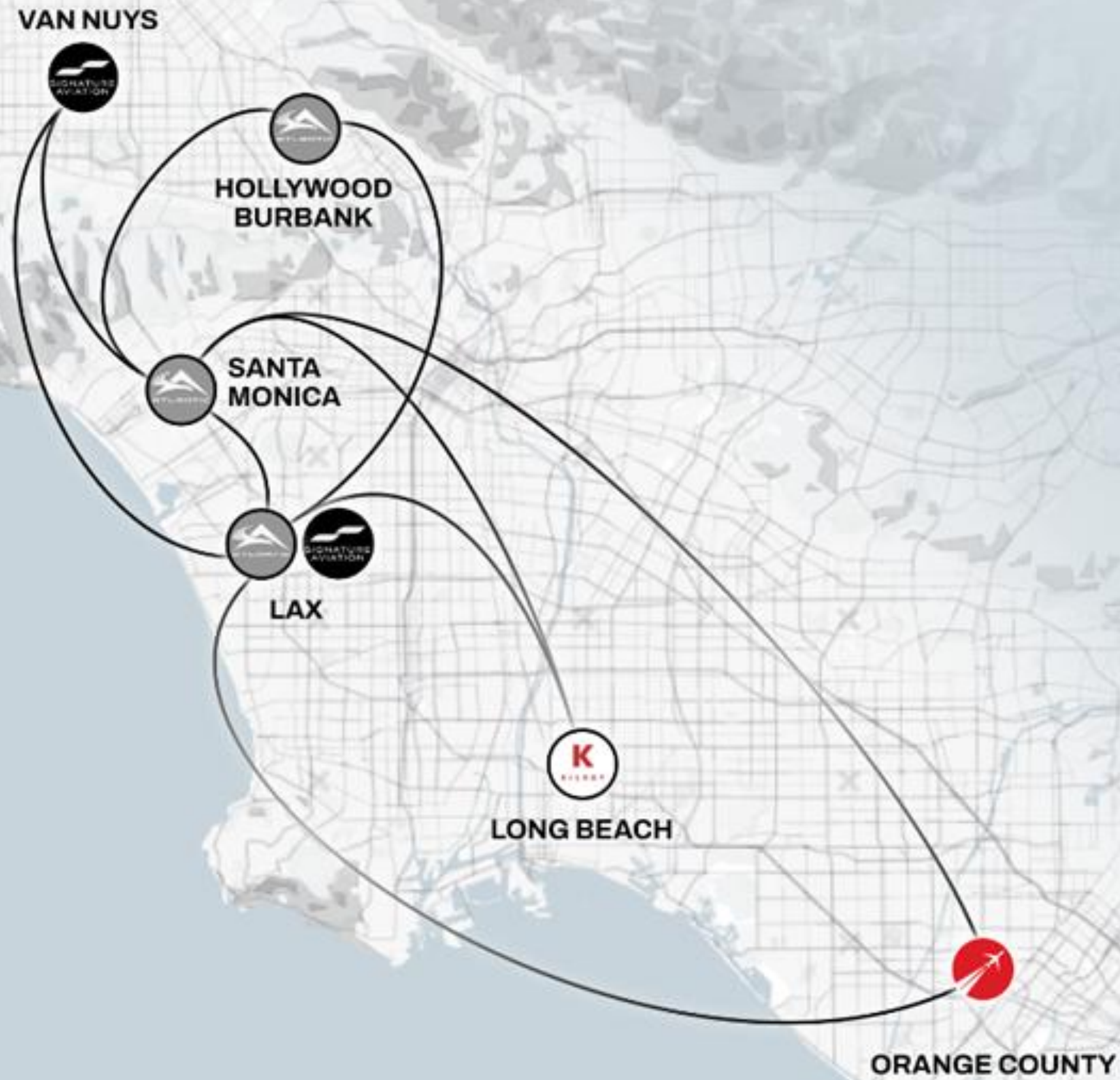
MEDICAL

ANNOUNCED NETWORKS

▶ Los Angeles, CA

▶ Bay Area

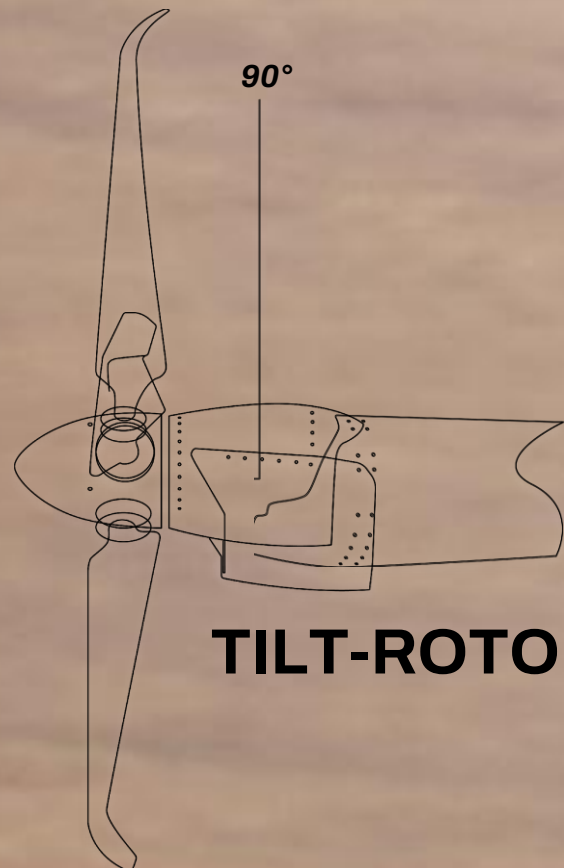
- Signature Aviation
- Atlantic Aviation
- Kilroy Realty
- Clay Lacy Aviation



# ▶ June 2024: Midnight Transition Flight

BELIEVED TO BE ONE OF THE LARGEST EVTOL AIRCRAFT TO COMPLETE TRANSITION ENABLING COMMERCIALY VIABLE PASSENGER PAYLOADS

ARCHER ON TRACK TO COMPLETE 400+ TEST FLIGHTS IN 2024 ACROSS ITS AIRCRAFT FLEET



TILT-ROTOR ANGLE

103.01

SPEED MPH

# Unprecedented Manufacturing Partnership With Stellantis, One of World's Largest Automotive OEMs

- Manufacturing facility located adjacent to Covington Municipal Airport to enable onsite flight testing
- Stellantis has invested nearly \$300M to date as Archer's largest equity investor
- Dozens of Stellantis' full-time employees embedded within Archer team
- Agreement under negotiation for Stellantis to serve as our contract-manufacturing partner with goal of reducing Archer's future capital requirements
- Initial build out of our facility is on track to be completed by end of 2024; designed to allow us to ramp production to up to 650 aircraft per year

STELLANTIS

Jeep



Maserati



Indicative Order Book is Now ~\$5.7B Up to 1,141 Aircraft With Pre-Delivery Payments (PDPs)

CUSTOMER	REGION	# of AIRCRAFT			ORDER VALUE	PDPs / DEPOSITS
		BASE	OPTIONS	TOTAL	UP TO**	
	 USA	200	100	<b>300</b>	\$1.5B	\$10M
	 INDIA	200	—	<b>200</b>	\$1.0B	Confidential
	 UAE	100	375	<b>475</b>	\$2.38B	\$5M
	 KOREA	25	25	<b>50</b>	\$250M	\$7M+
 <small>(To be announced prior to 8/9/2024)</small>	MULTIPLE	44	72	<b>116</b>	\$580M	\$4.4M
<b>TOTAL</b>		<b>569</b>	<b>572</b>	<b>1,141</b>	<b>\$5.71B</b>	<b>\$26M+</b>

**COMMERCIALIZATION PARTNERS**

**INDUSTRIALIZATION PARTNER**

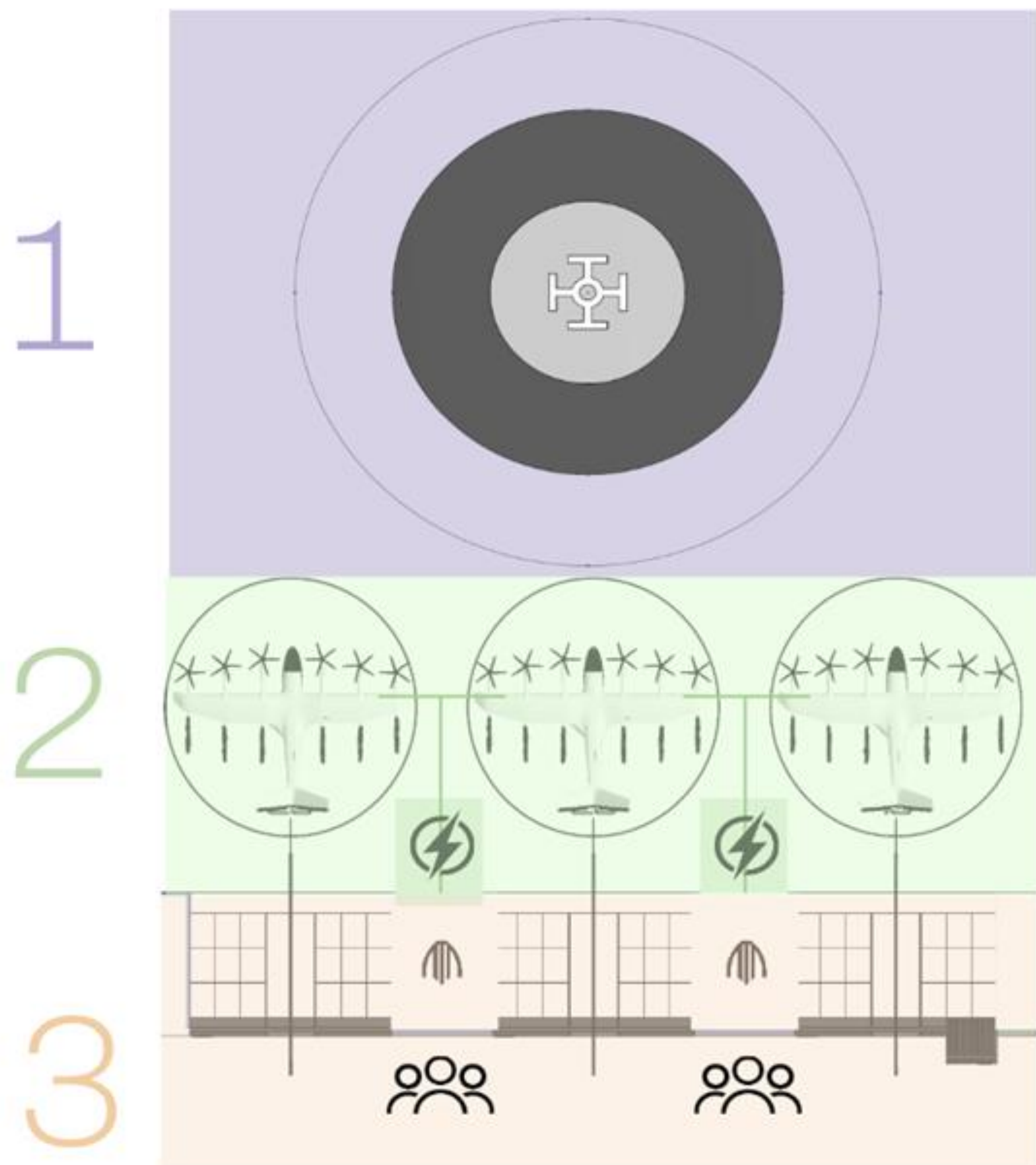
**AIRCRAFT DEVELOPMENT PARTNERS**

CONFIDENTIAL AND PROPRIETARY

Orders remain conditional, subject to the execution of further definitive agreements with each customer and the satisfaction of certain conditions. Order values represent the Company's estimate based on an indicative \$5M per aircraft price. This is only a prediction and actual results may differ materially due to a variety of factors. See "Disclaimers" and "Risk Factors" at the beginning of this presentation for more information.

# Vertiport Overview

A vertiport is a mobility hub for passengers to arrive and depart on eVTOL flights comprised of (3) main elements



## Overview – Charging

Utilize the **Combined Charging System (CCS)** that was recently endorsed by the **General Aviation Manufacturers Association (GAMA)** and is being utilized by several top original equipment manufacturers (OEMs) across the industry.

- “Plug & Charge” for **10 minute** rapid charge and turns
- Powered by a cable reel with max length of **50 feet**
- Thermal Management System supports high tempo ops

### **Specifications**

**Mfg:** Beta Technologies

**Max Voltage:** 1000VDC

**Power:** 320kW

**Current:** Boost to 435A for ~10min (400A after)

**AC Input:** 480 VAC, 3ph, 60Hz, 420A

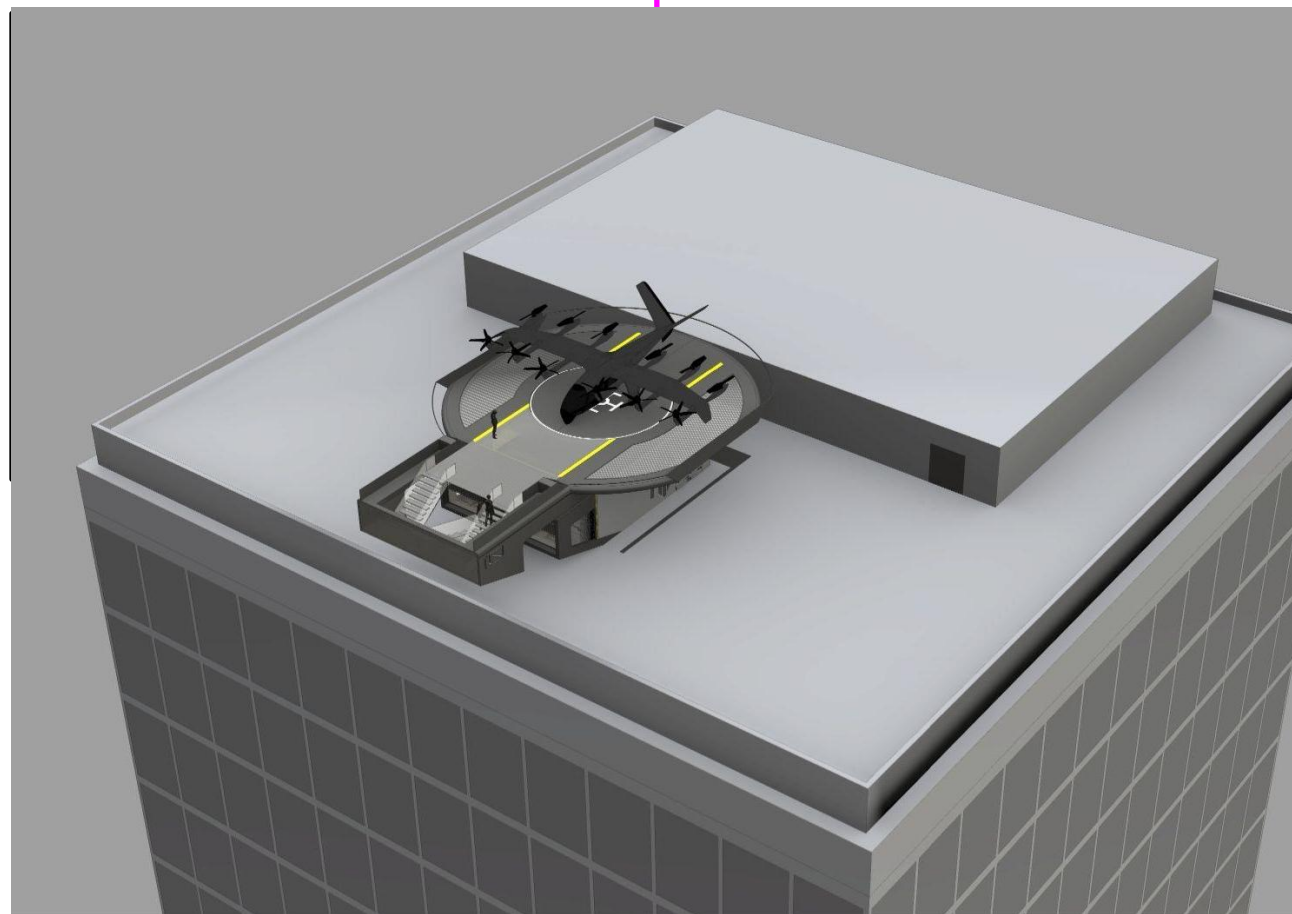
**Protocol:** Combined Charging Standard, CCS-1



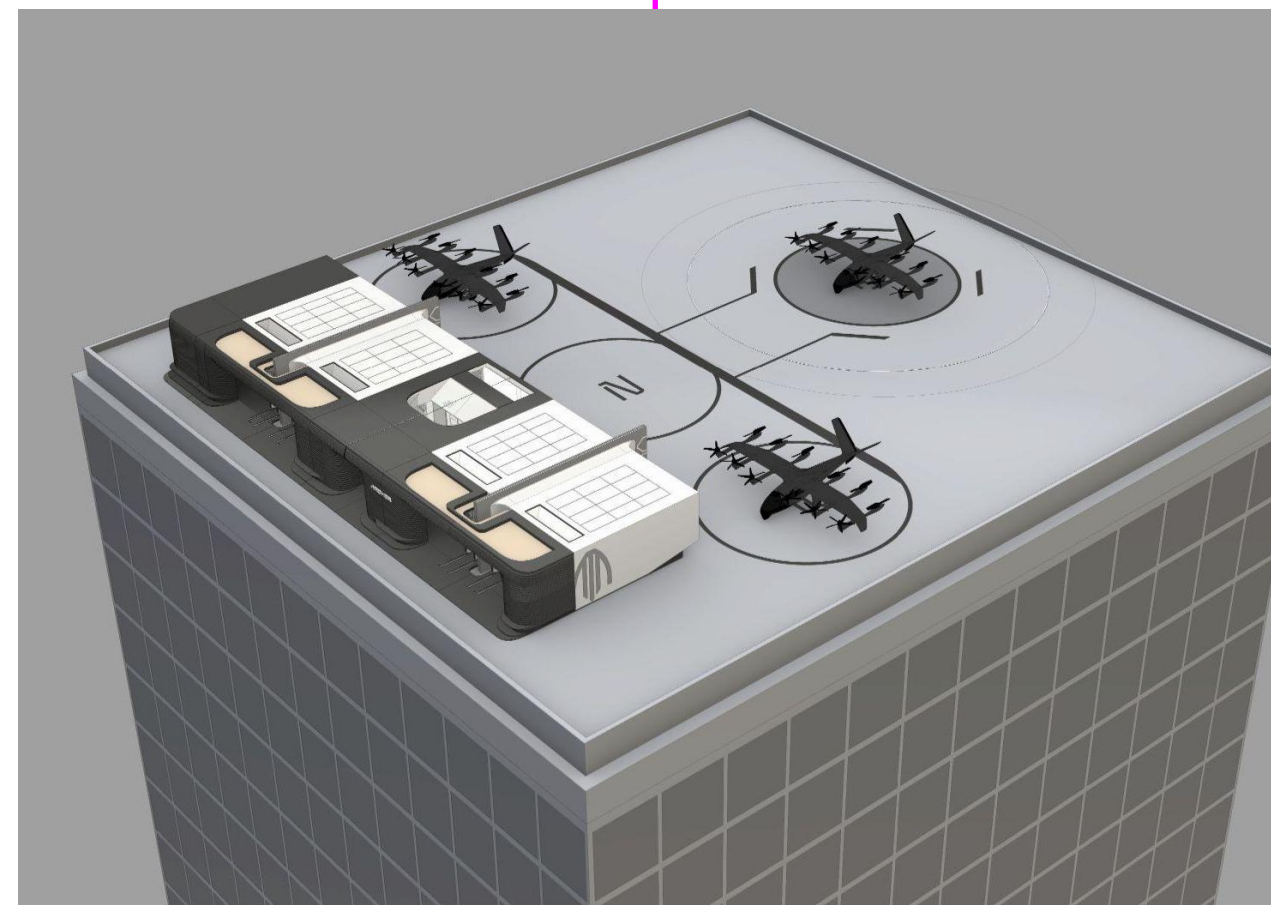
# Vertiport Product Portfolio

Our Vertiport network will have a portfolio of products which will evolve based on requirements

Micro  
Vertiport



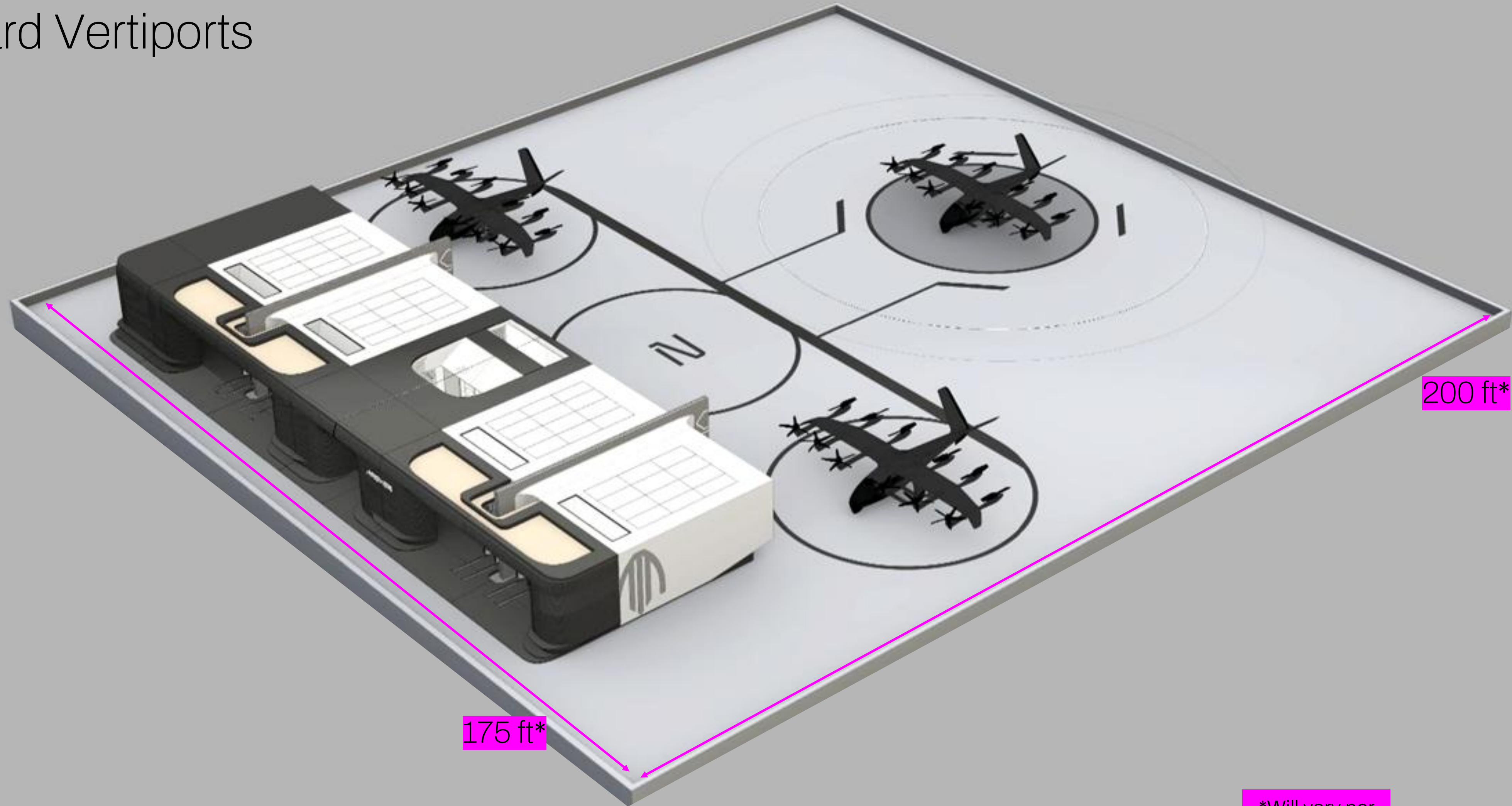
Standard  
Vertiport



Destination  
Vertiport



# Standard Vertiports



\*Will vary per site

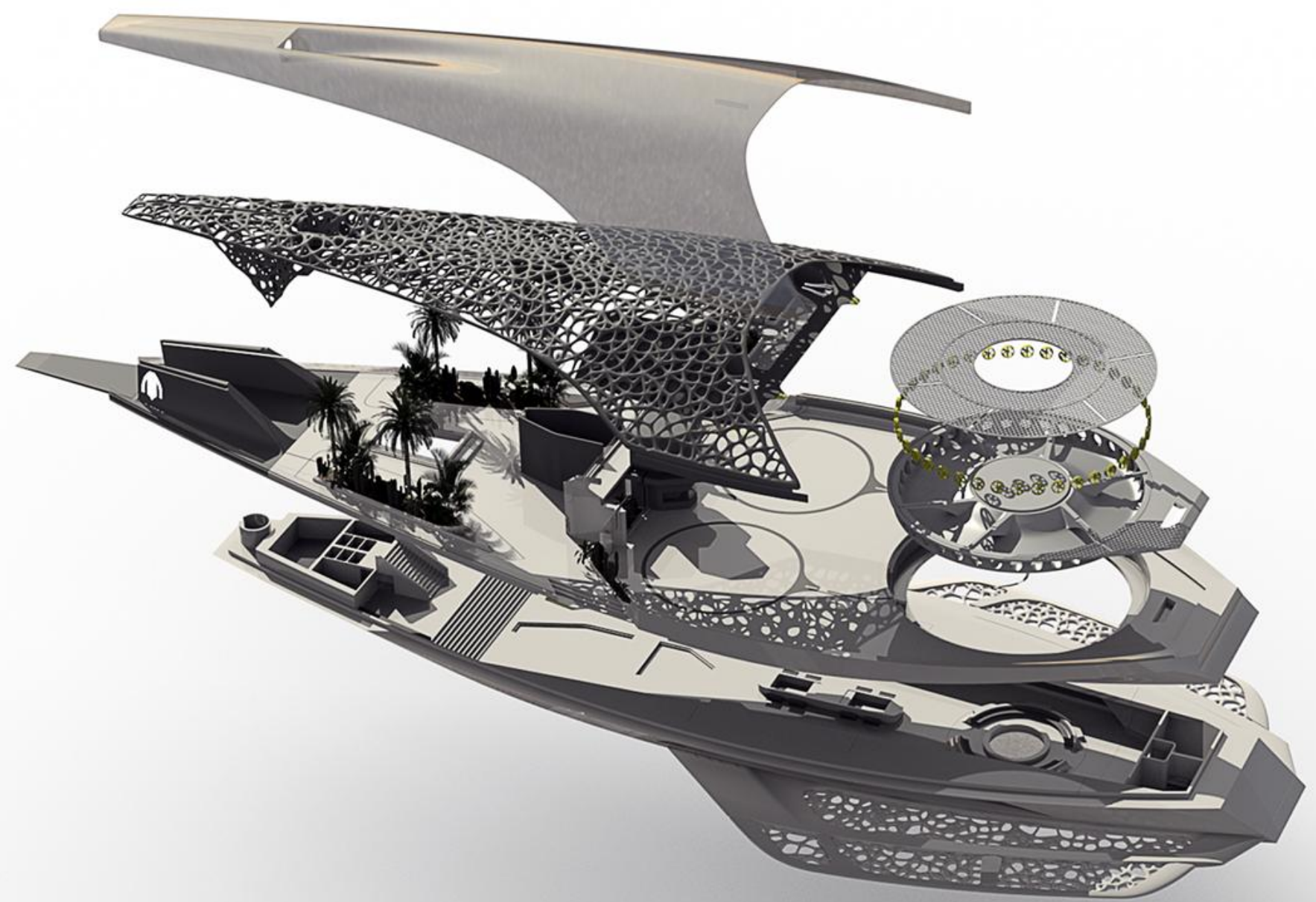


# Next Generation Aviation Infrastructure

ARCHER'S IN-HOUSE DESIGN & INFRASTRUCTURE TEAMS ARE COLLABORATING WITH PARTNERS TO IMPLEMENT VERTIPORTS AT KEY LOCATIONS WITH THE GOAL OF SEAMLESSLY INTEGRATING OUR FUTURE OPERATIONS INTO COMMUNITIES AROUND THE WORLD



Image depicts simulated operations





Thank You

