



**National
Transportation
Safety Board**

3D Laser Scanner for On-Scene Documentation (Highway)

Scanner--FARO FOCUS 3D

- Long range up to 300m
- 976,000 measurement points per second
- Scanner size:
 - 9.5"x8"x4"
 - 11lbs
- WLAN remote control
- Photorealistic color



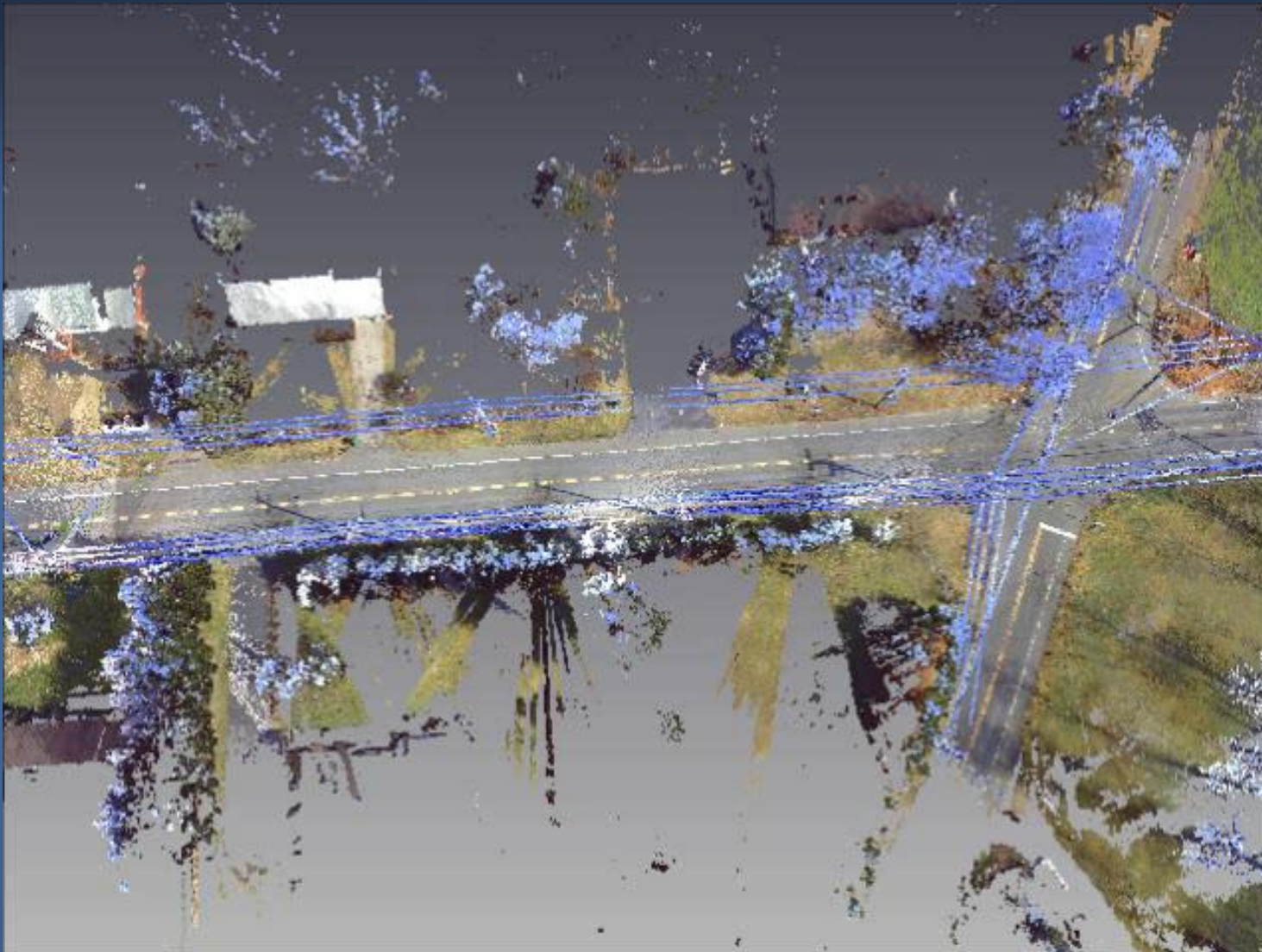
Purpose

- To document physical evidence
 - Tire marks
 - Vehicle damage
 - Final rest positions
- To measure deformation
- To create visualizations or animations

Accident Scene – Chesterfield, NJ



Accident Scene - Animation



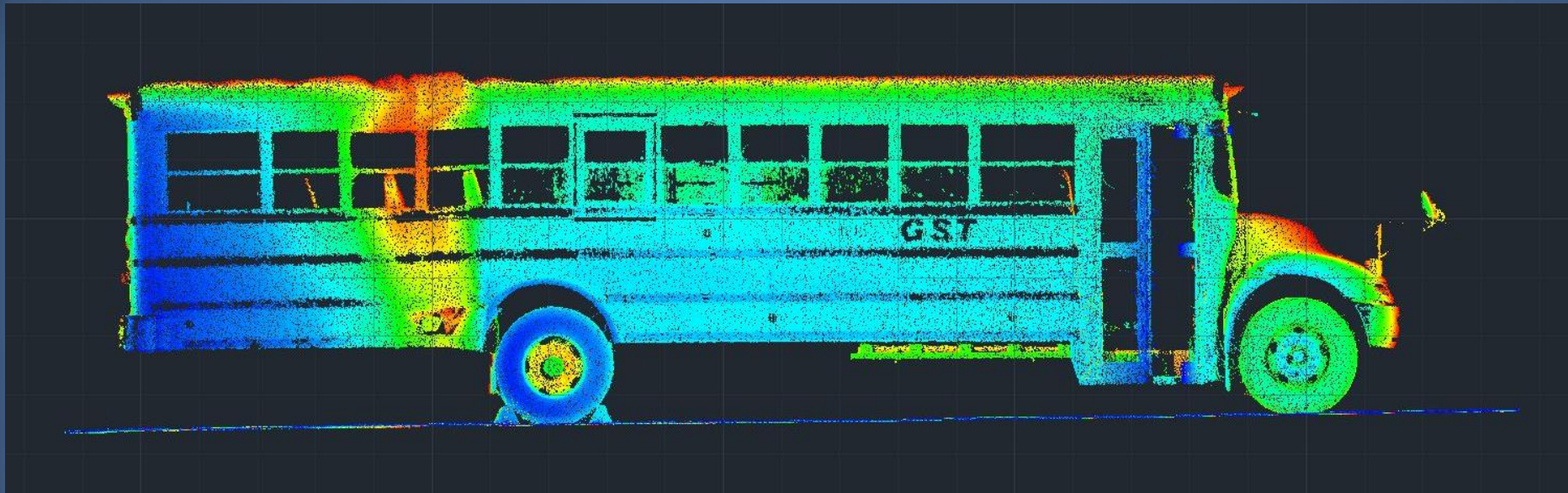
Accident School Bus



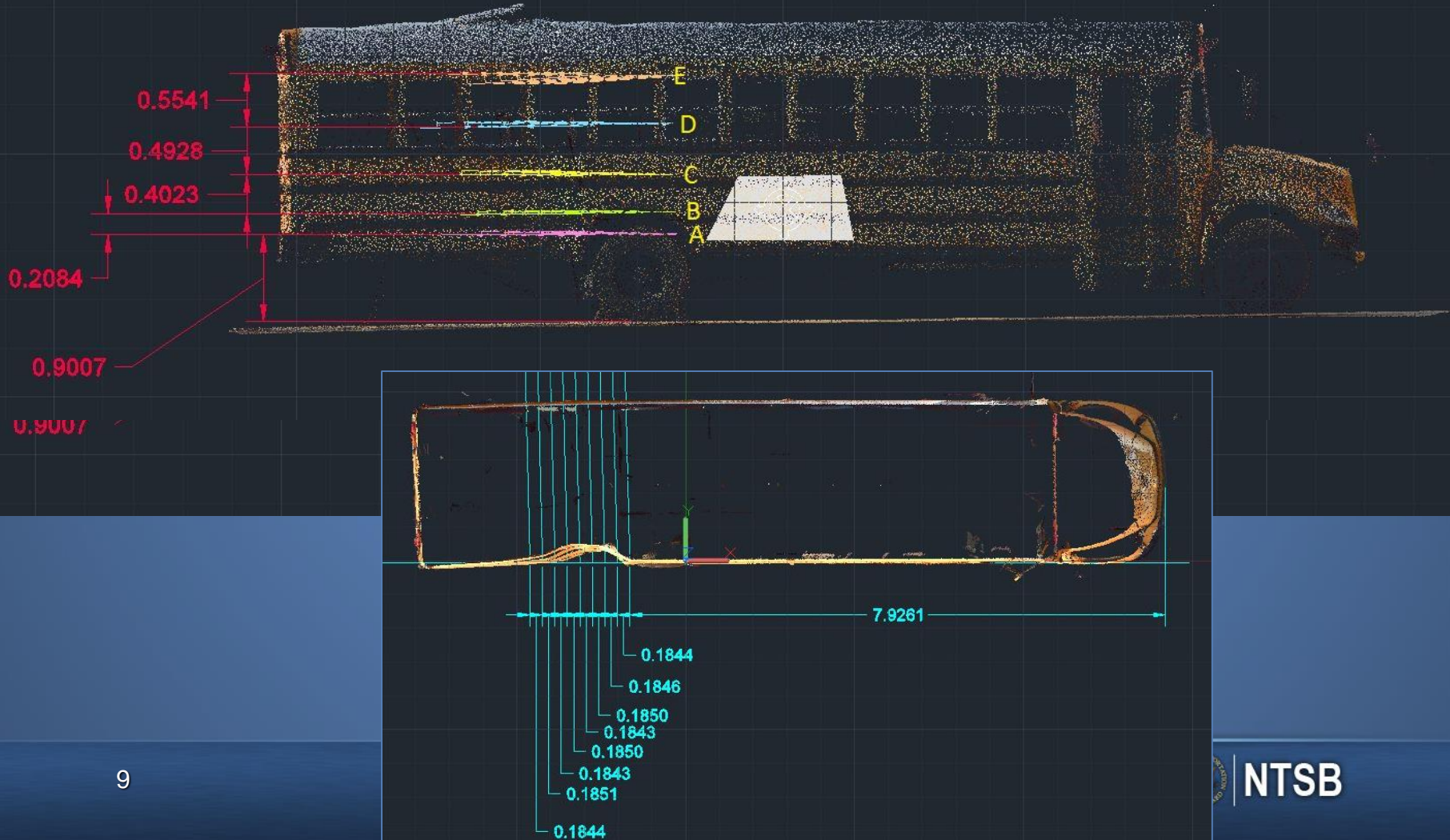
Accident School Bus



Deformation



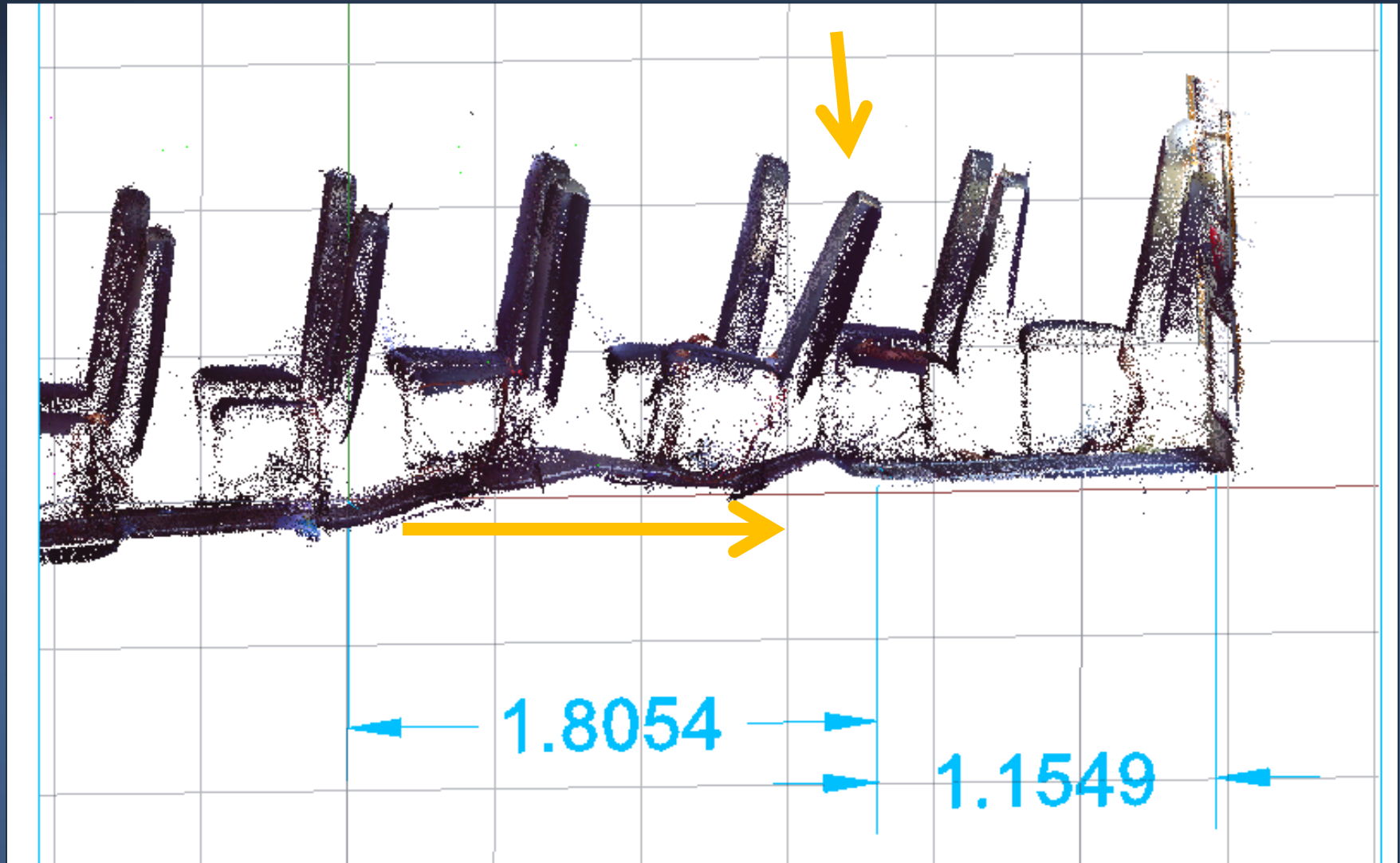
School Bus Damage Profile – Side (units = meters)



School Bus Damage Profile - A



Interior Deformation: Floor and Seats



Exemplar School Bus





National Transportation Safety Board