



| ICAO

INTERNATIONAL CIVIL AVIATION ORGANIZATION

A UN SPECIALIZED AGENCY



AGA Effective Implementation of SARPs Analysis – October 2025

Fabio Salvatierra – NACC AGA RO

Eighth NAM/CAR Regional Meeting for National Continuous
Monitoring Coordinators (NCCMC/8)

ICAO NACC Regional Office in Mexico City, Mexico, from 18 to 20 November 2025

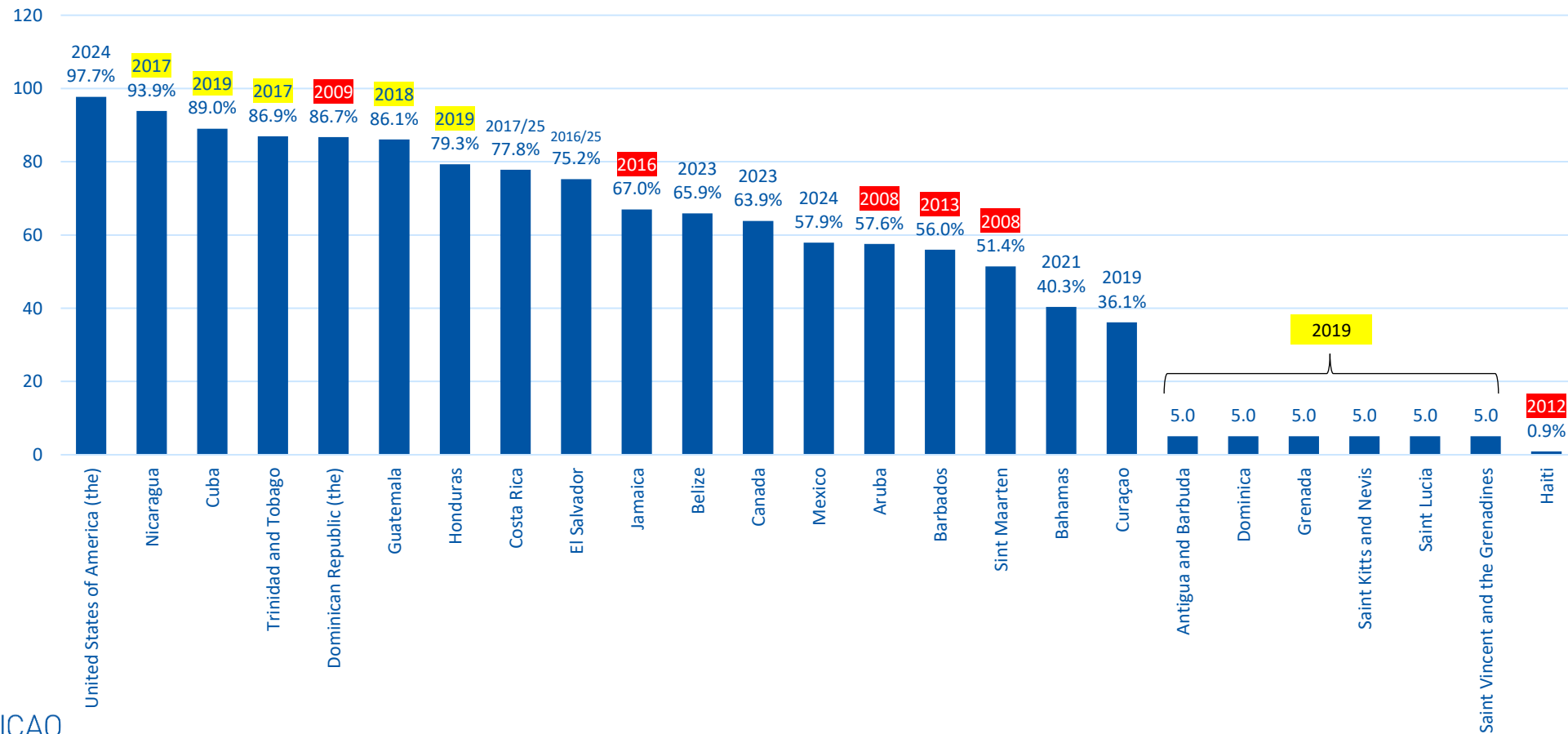
NACC AGA Program

Approved on NACC/WG/AGA/TF/2 meeting, is **under review** due to new developments after ICAO A42



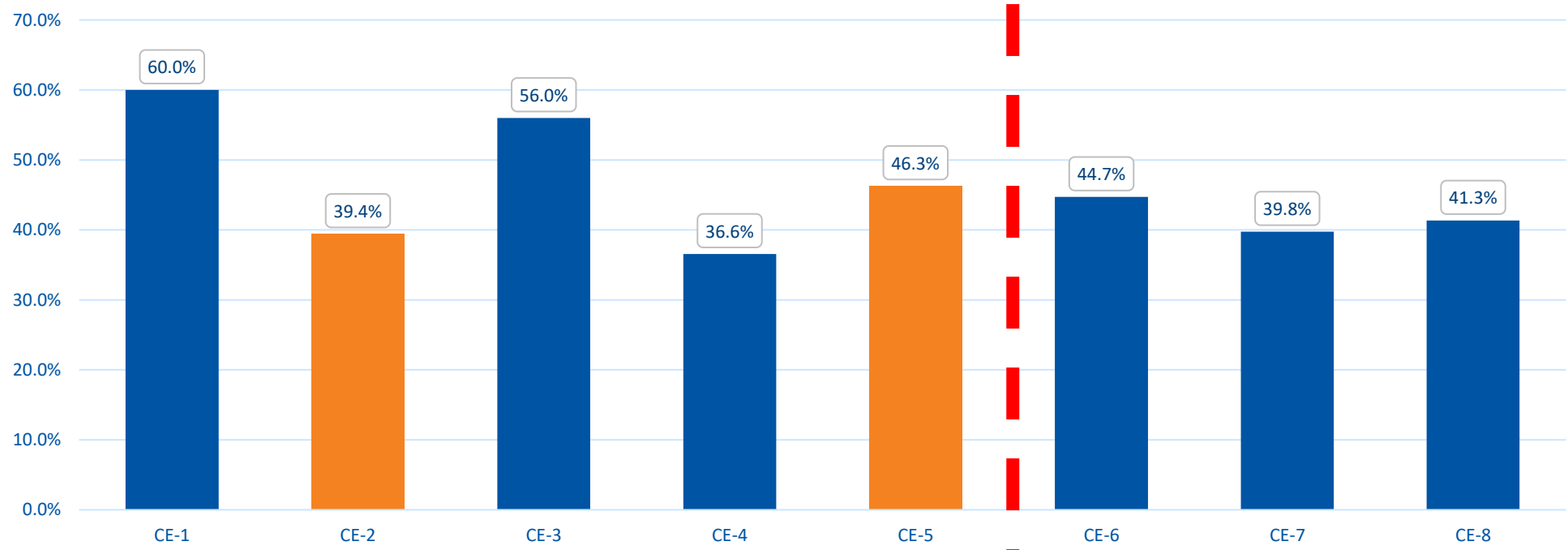
AGA EI (as per OLF) – Oct. 2025

With last **AGA** activity (Year)



NACC AGA Average per CE

More opportunities on “establishment” PQs



AGA EI per State per CE Heatmap

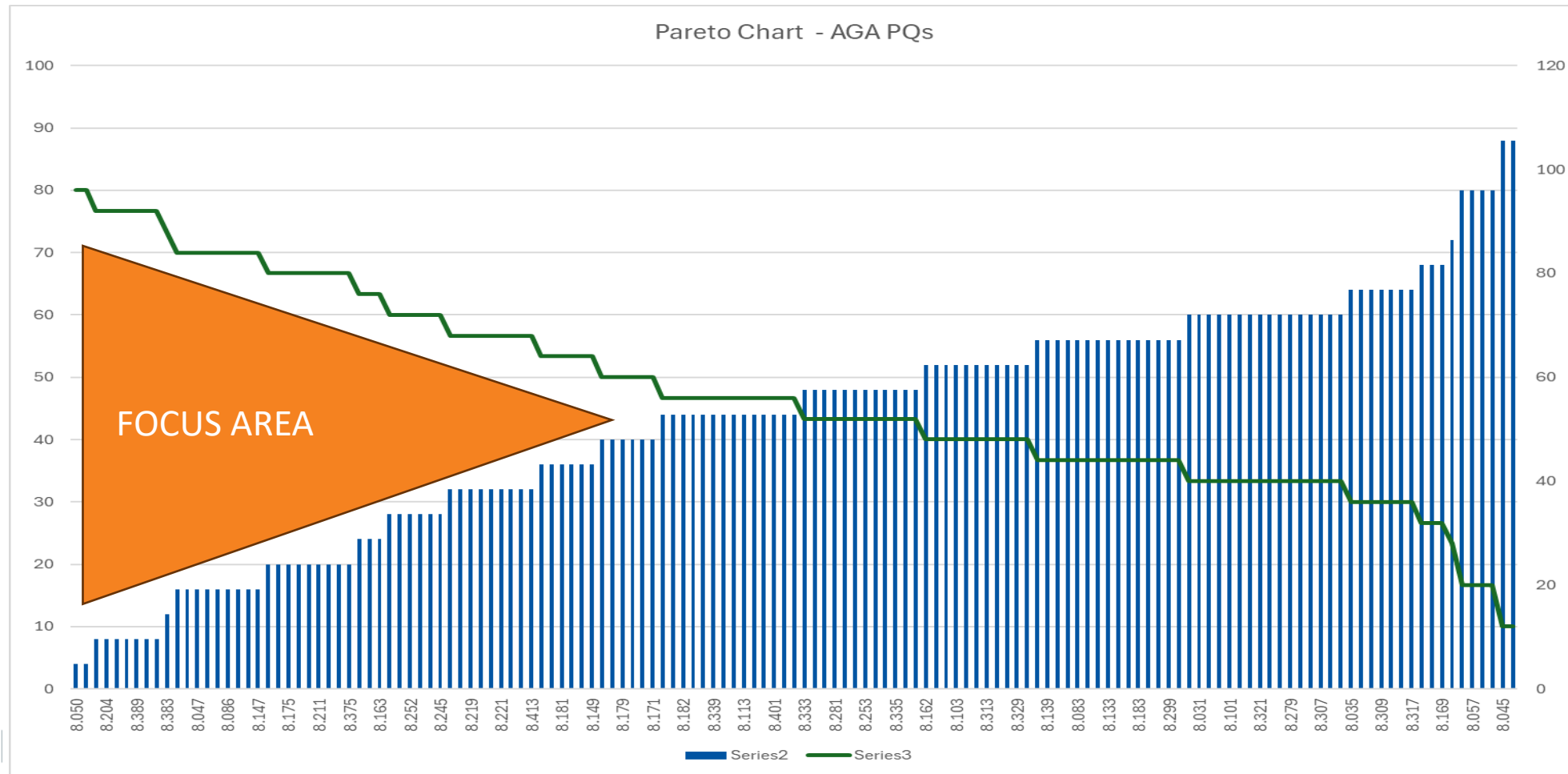
Average of Ei	Column Lab							
Row Labels	CE-1	CE-2	CE-3	CE-4	CE-5	CE-6	CE-7	CE-8
Antigua and Barbuda	0.00	0.00	28.57	14.29	0.00	5.88	0.00	0.00
Aruba	0.00	0.00	42.86	14.29	50.00	52.94	50.00	77.78
Bahamas	50.00	57.14	71.43	28.57	71.43	25.49	15.63	0.00
Barbados	50.00	19.05	71.43	0.00	42.86	50.98	43.75	66.67
Belize	100.00	80.95	57.14	71.43	92.86	47.06	53.13	22.22
Canada	100.00	47.62	71.43	57.14	57.14	58.82	62.50	55.56
Costa Rica	100.00	38.10	57.14	28.57	64.29	62.75	65.63	66.67
Cuba	100.00	66.67	85.71	28.57	71.43	86.27	87.50	88.89
Curaçao	50.00	61.90	57.14	57.14	21.43	19.61	18.75	22.22
Dominica								
Dominican Republic (the)	100.00	66.67	100.00	71.43	78.57	86.27	68.75	66.67
El Salvador	100.00	52.38	85.71	42.86	64.29	58.82	46.88	66.67
Grenada	0.00	0.00	28.57	14.29	0.00	5.88	0.00	0.00
Guatemala	50.00	76.19	85.71	85.71	85.71	66.67	78.13	55.56
Haiti	50.00	0.00	0.00	0.00	0.00	0.00	0.00	0.00
Honduras	100.00	80.95	57.14	85.71	78.57	58.82	53.13	55.56
Jamaica	100.00	33.33	71.43	42.86	50.00	64.71	46.88	55.56
Mexico	100.00	80.95	28.57	42.86	50.00	52.94	50.00	44.44
Nicaragua	100.00	66.67	85.71	57.14	78.57	84.31	62.50	88.89
Saint Kitts and Nevis	0.00	0.00	28.57	14.29	0.00	5.88	0.00	0.00
Saint Lucia	0.00	0.00	28.57	14.29	0.00	5.88	0.00	0.00
Saint Vincent and the Grenadines	0.00	0.00	28.57	14.29	0.00	5.88	0.00	0.00
Sint Maarten	50.00	19.05	57.14	14.29	21.43	47.06	50.00	22.22
Trinidad and Tobago	100.00	52.38	85.71	28.57	78.57	68.63	59.38	88.89
United States of America (the)	100.00	85.71	85.71	85.71	100.00	96.08	81.25	88.89
Grand Total	60.0	39.4	56.0	36.6	46.3	44.7	39.8	41.3

AGA EI by audit area group Heatmap

Identifies the areas that are more affected by EI

Row Labels	CE-1	CE-2	CE-3	CE-4	CE-5	CE-6	CE-7	CE-8
Aerodrome certification - General					58.0	45.0		
Aerodrome maintenance						48.0	36.0	
Aerodrome manual					44.0	56.0	40.0	
Aerodrome surveillance						36.0	30.4	35.2
Aerodrome visual aids						35.2	58.0	
Facilities, equipment and documentation					50.0			
Heliport characteristics							8.0	
Legislation and regulations - AGA	60.0	39.4	80.0			32.0	60.0	
Organization, staffing and training - AGA			52.0	36.6				
Physical characteristics, facilities and equipment						44.0		
Provision of aerodrome data and coordination					40.0	61.3	52.0	
Safety procedures for aerodrome operations					49.3	46.0	52.0	50.0
SMS/aeronautical studies/risk assessments					20.0		30.0	48.0

Pareto Chart (AGA PQs affecting EI)



Top 5 Highest PQs

PQ	CE	Average of EI
8.045	CE-3	88
8.153	CE-6	88
8.011	CE-3	80
8.057	CE-4	80
8.137	CE-6	80

Top 5 Lowest PQs

PQ	CE	Average of EI
8.048	CE-8	4
8.050	CE-7	4
8.144	CE-6	8
8.204	CE-6	8
8.385	CE-7	8

Row Labels	CE	PPQ	Average of Ei
8.275	CE-1	1	72
8.333	CE-1		48

Row Labels	CE	PPQ	Average of Ei
8.367	CE-2		60
8.005	CE-2	1	56
8.139	CE-2		56
8.303	CE-2	1	56
8.337	CE-2		56
8.162	CE-2		52
8.255	CE-2		52
8.001	CE-2	1	48
8.003	CE-2	1	44
8.172	CE-2		44
8.182	CE-2		44
8.015	CE-2	1	36
8.132	CE-2		32
8.202	CE-2		32
8.219	CE-2		32
8.134	CE-2		28
8.222	CE-2		28
8.252	CE-2		28
8.142	CE-2	1	16
8.381	CE-2		16
8.383	CE-2		12

Row Labels	CE	PPQ	Average of Ei
8.045	CE-3		88
8.011	CE-3	1	80
8.035	CE-3		64
8.031	CE-3		60
8.033	CE-3		60
8.039	CE-3	1	24
8.047	CE-3		16

Row Labels	CE	PPQ	Average of Ei
8.057	CE-4		80
8.051	CE-4	1	48
8.053	CE-4		32
8.040	CE-4		28
8.055	CE-4	1	28
8.042	CE-4		24
8.049	CE-4		16

Row Labels	CE	PPQ	Average of Ei
8.065	CE-5		68
8.141	CE-5		68
8.169	CE-5		68
8.105	CE-5		60
8.083	CE-5	1	56
8.328	CE-5		56
8.281	CE-5		48
8.069	CE-5		44
8.119	CE-5		44
8.339	CE-5		44
8.063	CE-5		20
8.369	CE-5		20
8.148	CE-5		16

Establishment PQ's (CE-1 to 5) have room for improvements, specially on CE-2

Row Labels	CE	PPQ	Average of Ei
8.153	CE-6	1	88
8.137	CE-6		80
8.157	CE-6		80
8.085	CE-6		64
8.227	CE-6		64
8.309	CE-6		64
8.101	CE-6	1	60
8.235	CE-6		60
8.287	CE-6		60
8.321	CE-6		60
8.347	CE-6		60
8.111	CE-6	1	56
8.133	CE-6		56
8.151	CE-6		56
8.173	CE-6	1	56
8.183	CE-6		56
8.191	CE-6	1	56
8.291	CE-6		56
8.299	CE-6		56
8.091	CE-6	1	52
8.103	CE-6		52
8.251	CE-6		52
8.297	CE-6		52
8.313	CE-6		52
8.201	CE-6	1	48
8.225	CE-6		48
8.253	CE-6		48
8.331	CE-6		48
8.093	CE-6		44
8.259	CE-6	1	44
8.087	CE-6	1	40
8.161	CE-6	1	40
8.179	CE-6	1	40
8.345	CE-6	1	40
8.365	CE-6		40

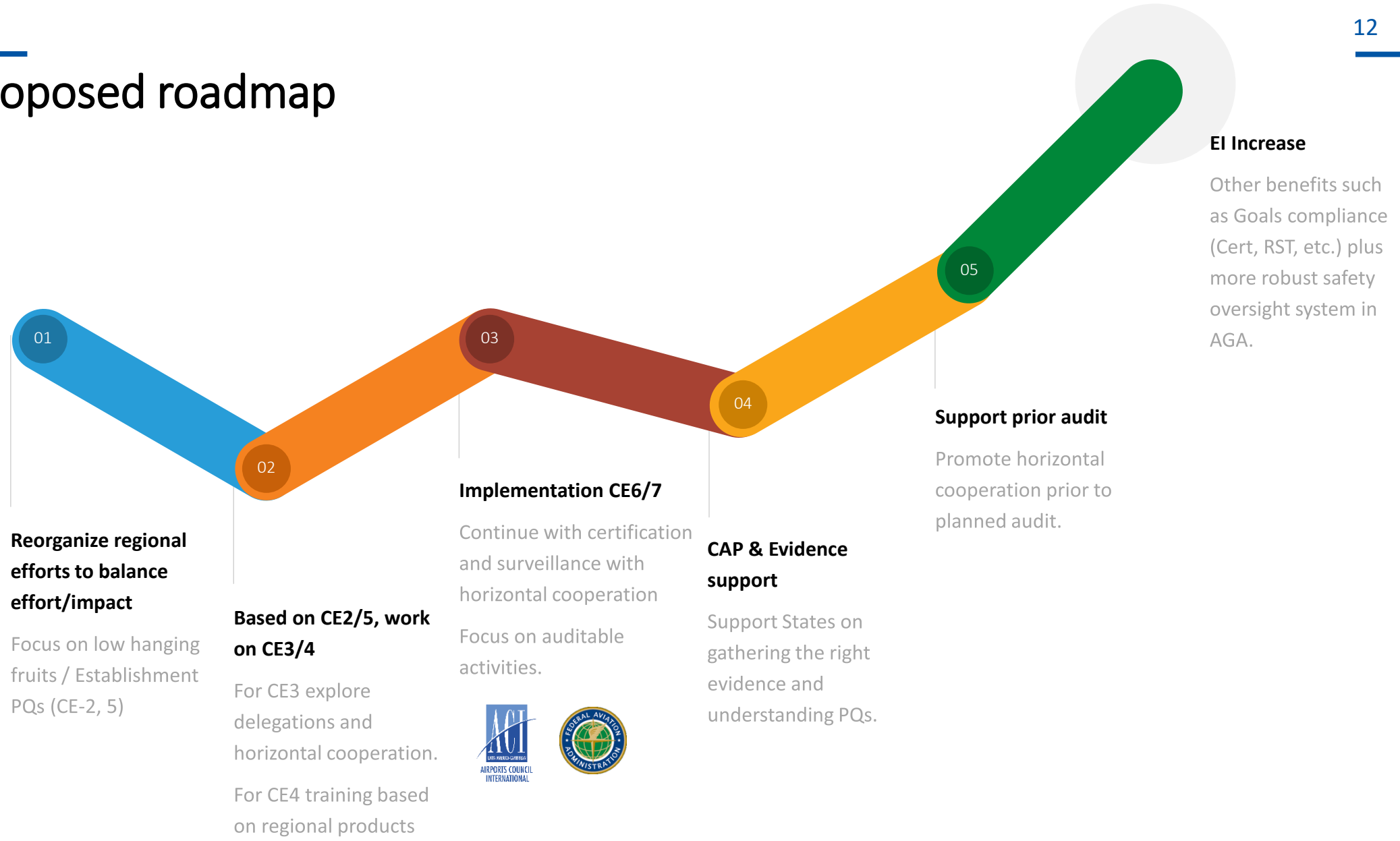
8.145	CE-6		36
8.181	CE-6		36
8.099	CE-6	1	32
8.221	CE-6		32
8.245	CE-6		28
8.163	CE-6	1	24
8.175	CE-6		20
8.177	CE-6		20
8.209	CE-6		20
8.211	CE-6		20
8.323	CE-6	1	20
8.086	CE-6	1	16
8.215	CE-6		16
8.239	CE-6		16
8.144	CE-6		8
8.204	CE-6	1	8

Implementation PQ's (CE-6 to 8) have room for improvements, specially on CE-6

Row Labels	CE	PPQ	Average of Ei
8.223	CE-7	1	64
8.283	CE-7		64
8.317	CE-7		64
8.277	CE-7	1	60
8.279	CE-7		60
8.301	CE-7		60
8.305	CE-7	1	60
8.307	CE-7	1	60
8.311	CE-7	1	60
8.319	CE-7		60
8.143	CE-7	1	56
8.155	CE-7		52
8.233	CE-7		52
8.349	CE-7		48
8.113	CE-7		44
8.273	CE-7		44
8.293	CE-7		44
8.401	CE-7	1	44
8.171	CE-7		40
8.115	CE-7		36
8.257	CE-7		36
8.341	CE-7		32
8.403	CE-7		32
8.315	CE-7		20
8.375	CE-7		20
8.147	CE-7		16
8.385	CE-7	1	8
8.387	CE-7	1	8
8.389	CE-7		8
8.393	CE-7		8
8.395	CE-7		8
8.050	CE-7		4

Row Labels	CE	PPQ	Average of Ei
8.329	CE-8		52
8.405	CE-8		52
8.335	CE-8		48
8.377	CE-8		48
8.409	CE-8		48
8.411	CE-8	1	44
8.415	CE-8		44
8.413	CE-8	1	32
8.048	CE-8		4

Proposed roadmap



What do we need from States?

Support!

- High level support from Management in States in order to facilitate the activities to be planned by the RO and AGA TF, including loan of SME's for virtual and on-site activities.
- Open communication and transparency with Airport Operators (we both want the same).
- Focus on results rather than “means” or “ways”.
- Engagement to maintain open and constant communication with ICAO's and AGA TF Project managers.





Thank You!

nacc-aga@icao.int

