



# DTC-1 Pilot in the Netherlands Biometric Boarding & Border Crossing

Anouk Cartrysse and Lisette Looren de Jong

ICAO TRIP Symposium, 6 November 2025



**Schiphol**



Co-funded by  
the European Union



# DTC-1 Pilot for DG HOME European Commission: Use of DTC-1 in Airline Boarding & Border Crossing







- The implemented DTC-1 pilot in the Netherlands has underlined the large potential of DTC in the border management process:
  - It expedites the identity verification processes
  - Resulting in significantly faster border crossing process
- In line with our ambition to process border checks more effectively, focusing on an information-driven approach.
- Prepare border management processes for the upcoming EU regulation on the EU Digital Travel Application
  - Use the outcomes and learnings
  - Learn how to adopt the concept on a larger scale

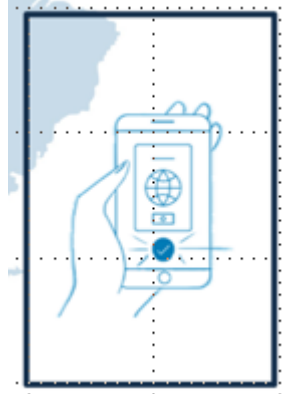


## Follow up DTC pilot in The Netherlands



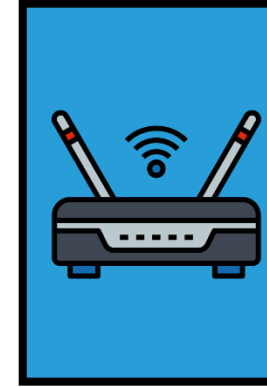
### General:

- Implementation from mid 2026 for at least 2 years
- Aligned to DTC EU Regulation on Digital Travel Application
- Consent driven and passenger remains in control of data
- EU nationals  $\geq 18$  years old
- Demonstrating interoperability with Aruba, Curacao and other 3rd countries



### DTC derivation app:

- Government owned
- DTC derivation (type 1)
- Liveness check
- Long term storage of DTC in secure wallet



### Router/Broker:

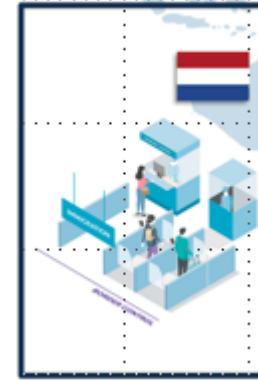
- Government organisation Justid
- Receive DTC from app via transmission protocol
- Send DTC to border authorities border and/or boarding

## Follow up DTC pilot in The Netherlands



Pre assessment for border control:

- Triggered by sharing DTC max 36 hours in advance to planned border crossing



Crossing the Dutch border:

- Dedicated DTC TAP & Go gate
- Departure , Transfer, arrival



The process at the border will be as follows:

- DTC Tap&Go-gate entry door is closed
- Passenger presents DTC QR code from the app
- If the QR-code is recognized, the DTC-VC is sent to the Tap&Go-gate and the gate entry door opens
- Place the closed passport on top of the document reader for NFC reading
- Perform passport chip reading and authentication
- Face capture and 1:1 face verification
- If these process steps are successful the exit door of the gate opens and the passenger can cross the border, resulting in a significantly faster border crossing.

---

# Thank You

