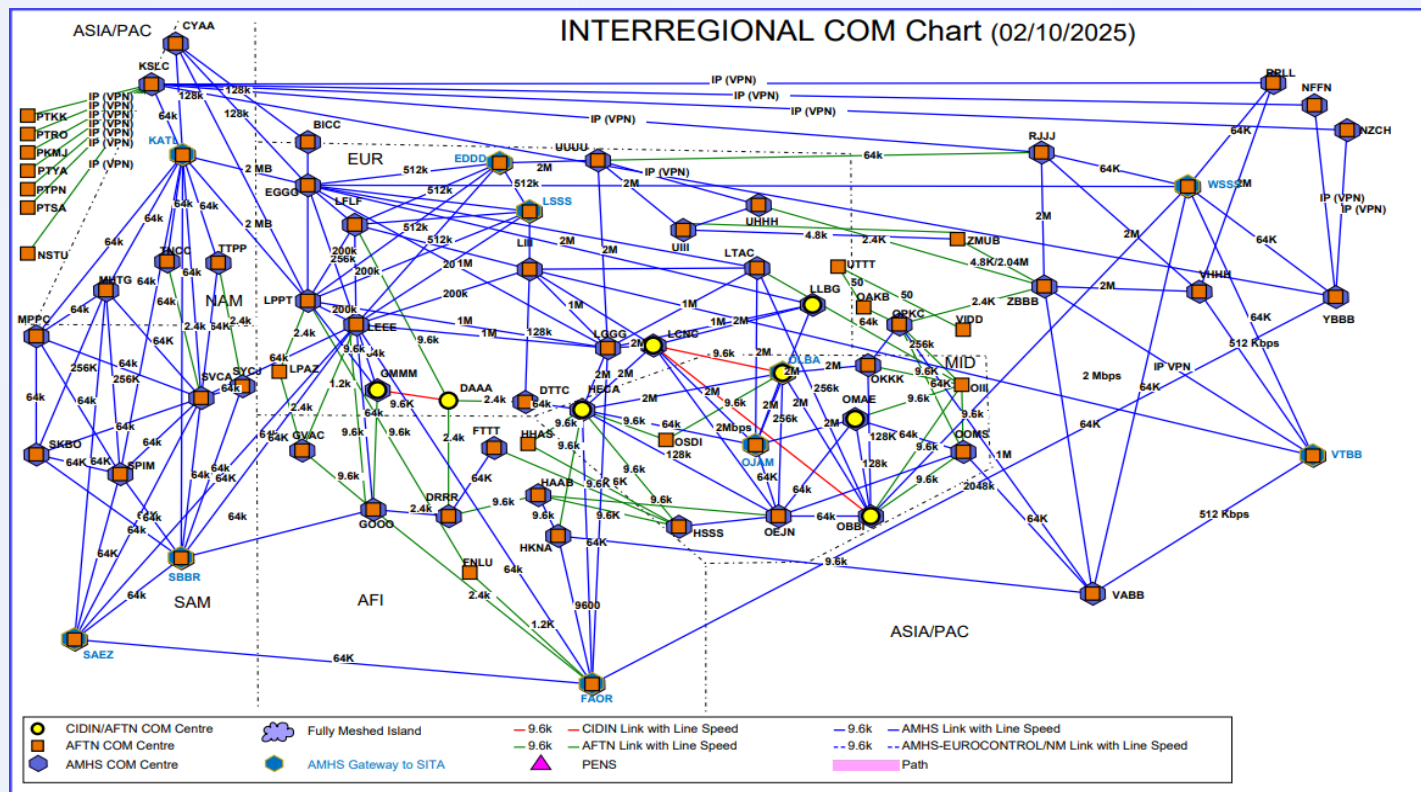


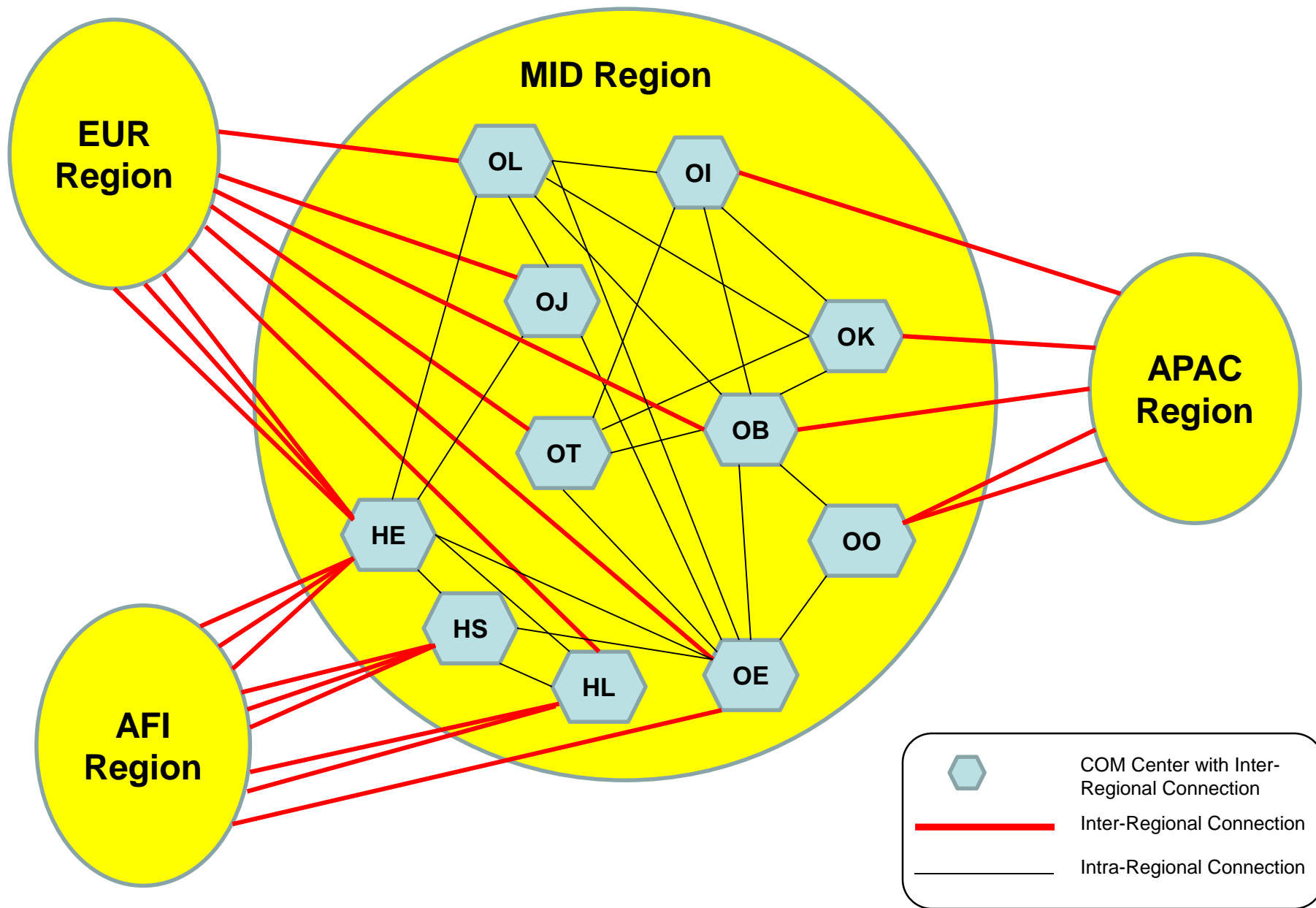
**Tenth Meeting of the MID ATS Messaging Management Centre
Steering Group (MIDAMC STG/10)
(Abu Dhabi, UAE, 19-23 October 2025)**

MIDAMC Progress report
By MIDAMC

Interregional Connections of MID Region to other ICAO Regions

- Several institutional, operational and technical aspects must be considered in the planning process of interregional connections between MID and adjacent ICAO Regions.





AFTN/AMHS Interregional Connections with **EUR Region**

- A summary of the existing connections between the EUR designated interregional gateways and MID Region is presented below, with some details as derived from the AMC.

State	COM Centre	EUR Region Centre	Type of connection	Capacity	Operational date	Comments
Egypt	HECA	LGCG	AMHS	2M		
		DTTC	AMHS	2M		For bilateral traffic
		LCNC	AMHS	2M		
Jordan	OJAM	LCNC	AMHS	2M	9-9-2025	
Saudi Arabia	OEJN	LCNC	AMHS	2M		
Qatar	OTBD	LCNC	AMHS	2M	15-5-2025	
Lebanon	OLBA	LCNC	CIDIN	64k		
Bahrain	OBBI	LCNC	CIDIN	64K		Will migrate to AMHS in 11-2025
Libya	HLTT	DTTC	AFTN	9.6K		

Designated AFTN/AMHS Gateway Centres in the EUR/NAT Regions

- ❑ The Gateway Centres EUR/NAT Regions for interregional AFTN/AMHS traffic exchange as specified below

For the MID Region	Athens and Nicosia
For the NAM Region	London and Lisbon
For the CAR Region	London and Madrid
For the SAM Region	Madrid and London
For the ASIA/PAC Regions	London, Rome and Moscow
For the AFI Region	Athens and Madrid

- ☐ It is noted that there is an AMHS connection between LCNC and HECA, currently used for the exchange of bilateral traffic, that can be used as alternative in case of outage of LGGG-HECA connection.
- ☐ The existing AFTN connection between LCNC and OJAM has been migrated to AMHS on 09 September 2025.
- ☐ New AMHS connection has been implemented between Qatar and Nicosia on 15-5-2025 .
- ☐ According to AMC information, there is a planned activity for an AMHS connection between LCNC (Nicosia COM Centre) and OBBI (Bahrain COM Centre), with an estimated completion time within Q4 2025
- ☐ No update was received from Lebanon regarding any planned activity to migrate the existing AFTN connection with LCNC to AMHS in the near future.
- ☐ New implementation of AMHS connections between the two regions will improve redundancy and make seamless AMHS paths to EUR, NAT, NAM, CAR and SAM.

AFTN/AMHS Interregional Connections with **APAC Region**

- A summary of the existing connections between the APAC Region and MID Region is presented below, with some details as derived from the AMC.

State	COM Centre	APAC Region Centre	Type of Connection	Capacity	Operational Date	Comments
Oman	OOMS	VABB	AMHS	64k		
		OPKC	AFTN	64k		Will migrate to AMHS soon
Bahrain	OBBI	WSSS	AMHS	2M	9-2025	
Iran	OIII	OPKC	AFTN	64k		
Kuwait	OKKK	OPKC	AMHS	2M		

5 Connections

- ☐ It is noted that there is an new AMHS connection between Bahrain (OBBI) and Singapore (WSSS) .
- ☐ According to AMC information, Oman (OOMS) has planned activity to migrate the existing AFTN connection with Pakistan (OPKC) to AMHS in the near future.
- ☐ The interregional connections between the MID region and APAC region have to be expanded to a larger number so that both regions are served sufficiently .
- ☐ Qatar, UAE, and Saudi Arabia may consider implementing new AMHS interregional connections with APAC region which will improve redundancy between the two regions.

AFTN/AMHS Interregional Connections with **AFI Region**

- A summary of the existing connections between the AFI Region and MID Region is presented below, with some details as derived from the AMC.

	COM Centre	AFI Region Centre	State	Type of Connection	Capacity	Operational Date
Egypt	HECA	FAOR	South Africa	AMHS	64k	
		HHAS	Eritrea	AFTN	9.6K	
		HKNA	Kenya	AFTN	9.6K	
KSA	OEJN	HAAB	Ethiopia	AFTN	9.6K	
Sudan	HSSS	FTTT	Chad	AFTN	9.6K	
		HAAB	Ethiopia	AFTN	9.6K	
		HHAS	Eritrea	AFTN	9.6K	
Libya	HLLT	DRRR	Niger	AFTN	9.6K	
		FTTT	Chad	AFTN	9.6K	

- As there is currently one AMHS connection between the two regions, it is recommended that most of AFTN interregional connections should be migrated to AMHS to reduce the asymmetric routing between the two regions

9 Connections

AFTN/AMHS Gateway Centres to other Networks (AMHS Gateways to SITA)

- ❑ The SITA Regional Gateways connected the AFS Network via an AMHS Gateway are identified in the following table :

ICAO REGION	COM CENTRES	STATES
AFI	FAOR	South Africa
ASI/PAC	VTBB	Thailand
	WSSS	Singapore
EUR/NAT	EDDD	Germany
	LSSS	Switzerland
MID	OJAM	Jordan
	OLBA	Lebanon
NAM/CAR	KATL	United States
SAM	SBBR	Brazil
	SAEZ	Argentina

AFTN/AMHS Gateway Centres to other Networks **(AFS to SWIM transition)**

- ☐ It was agreed in In (CNS SG13/MIDAMC SG9) to assign the MID AMC Steering Group (MIDAMC STG) the role of overseeing SWIM transition management at the regional level.
- ☐ Therefore, the meeting amended the new draft of the Terms of Reference (ToRs) for the MIDAMC Steering Group which was adopted in MIDANPIRG/ 22.

MIDANPIRG DECISION 22/19: MID AMC STG AMENDED TERMS OF REFERENCE

That, the amended MID AMC Steering Group Terms of Reference at Appendix B, incorporating SWIM-related activities is endorsed.

- ☐ MID States are to follow-up on AST TF meetings regarding any updated requirements for SWIM transition.

Regional IP Network

- ❑ MIDAMC meetings will offer a unique opportunity whereby all MID States work together towards a harmonized IP Network implementation across States and Regions, highlighting the need for interregional coordination and systems' interoperability.
- ❑ Regional IP Network is an enabler of several ASBU modules.
- ❑ MID states will use the procurement framework of the available regional network such as APAC Common Regional Virtual Private Network Programme (CRV) or New PENS .

❑ **MPLS services are used to implement regional IP networks such as**

- 1) Common aeRonautical VPN (CRV) for Asia and Pacific (APAC).
- 2) New Pan-European Network Service (New PENS) for EUR/NAT.

Currently, the communication services providers for these networks are PCCW Global (CRV), British Telecom (New PENS) .

Common aeRonautical Virtual Private Network (CRV)

- ❑ In CNS SG/13/MIDAMC9 meeting, the service provider (PCCWG) responsible for the implementation CRV network shared information about CRV network topology, and service delivery along with a description of each Package available in the CRV contract. PCCWG provided detailed information on the technical solutions proposed for CRV implementation and a price summary for various packages compared to the price quoted in 2018.
- ❑ PCCWG presented a special promotion offer for MID States to join CRV for Package D and Package D+.
- ❑ Renewed opportunities were offered for MID States to join CRV due to reduced costs and enhanced features. States were urged to conduct readiness assessments and consider participation.
- ❑ CRV contract mandates States to join CRV for an initial term of a minimum of 5 years.

New Pan-European Network Service (NewPENS)

- ❑ Directive 15/88 –dated 21 May 2015 –further enables the use of PENS by any interested Parties from the EUROCONTROL Member States and other States within the ICAO EUR/NAT Region and bordering States.

Pre-requisites to joining PENS

- ❑ The requesting Party must be in scope of Directive N°15/88 dated 21.5.2015 of the EUROCONTROL Permanent Commission.
- ❑ The ICAO MID Office, with the support of concerned States, may initiate discussions with EUROCONTROL, in order to explore the possibility of joining the NEWPENS project as an alternative solution for establishing a MID IP Network.

Updating data in EUR AMC

State	Routing Tables	Network Connections	Focal Points Contact Info.	AMHS System Capabilities
Jordan	✓	✓	✓	✓
Iraq	✓	✓	✓	✓
Saudi Arabia	✓	✓	✓	✓
Qatar	✓	✓	✓	✓
Bahrain	✓	✓	✓	✓
Iran	✓	✓	✓	n/a
UAE	x	✓	✓	✓
Kuwait	x	✓	✓	✓
Oman	x	✓	✓	✓
Lebanon	x	x	x	x
Syria	x	✓	x	n/a
Egypt	x	x	x	x
Sudan	x	x	x	x
Libya	x	x	x	n/a
Yemen	x	x	x	n/a

Updating Routing Directory in EUR AMC

- ☐ The MIDAMC team contacted the COM Centres (*Saudi Arabia, Qatar, Bahrain, UAE, Egypt, Lebanon, Syria, Kuwait, Iran, and Oman*) to update their AFTN/AMHS Routing Tables in the EUR AMC application. Accordingly, only four States (Saudi Arabia , Bahrain, Qatar, and Iran) provided their Touting Tables .
- ☐ Only Jordan and Baghdad COM Centers update their AFTN/AMHS routing tables each AIRAC cycle.
- ☐ The MIDAMC team couldn't not contact the COM Centres (*Sudan, Libya, and Yemen*) due to the lack of focal points contact information.
- ☐ MID states may update their AFTN/AMHS routing tables if they registered AMC accounts or through MIDAMC team by sending their routing tables.

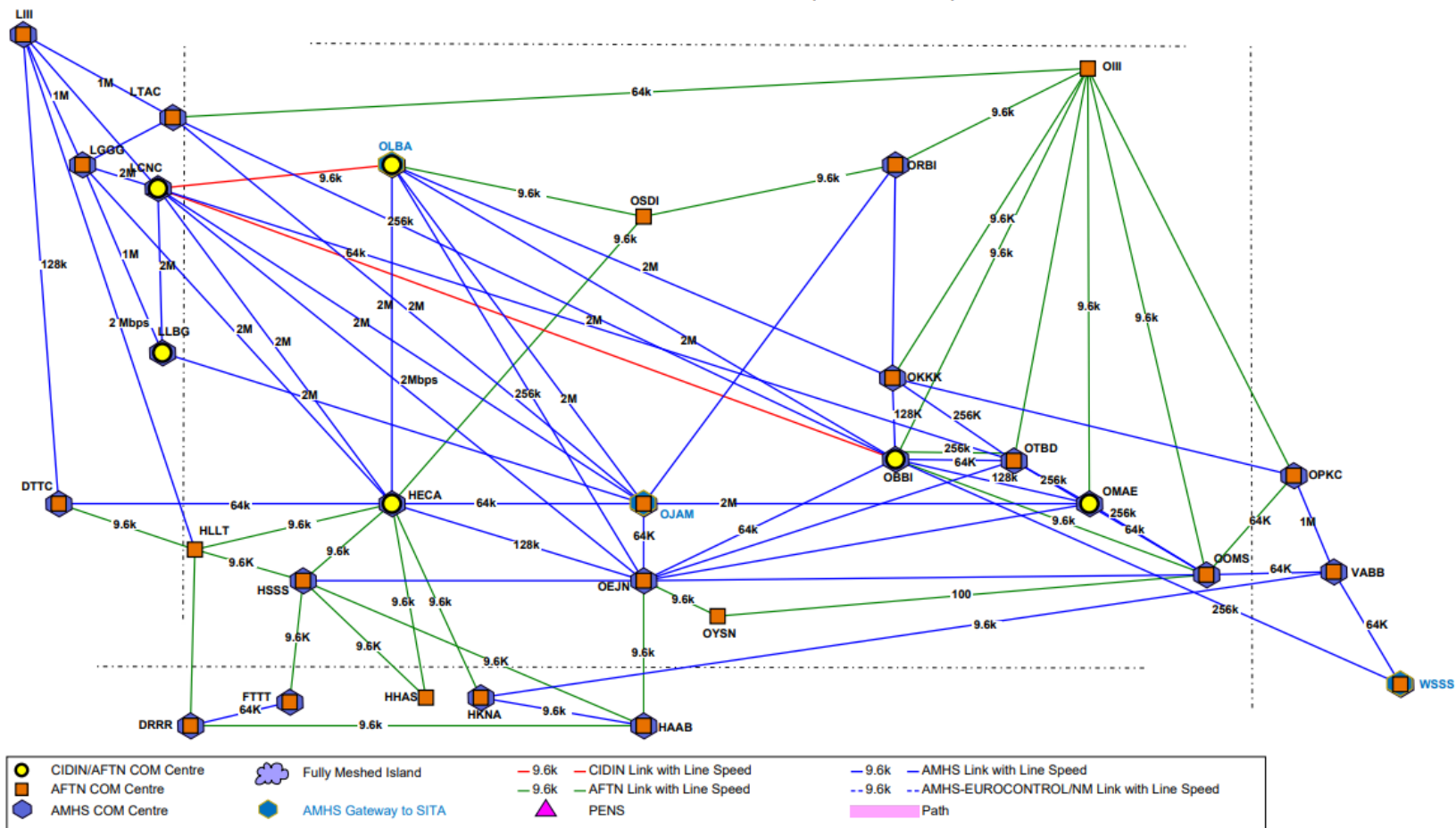
Updating Connections in EUR AMC

- ☐ The status of connections of MID states in AMC are almost up to date due to the low level of implementation of new links and migration of the AFTN links to AMHS.
- ☐ MID states may update their connections if they registered AMC accounts, or through MIDAMC team by sending their connection information.

Updating Focal points in Network Inventory in EUR AMC

- ☐ All MID states have updated their Focal Points contact details except (Sudan, Libya, Yemen, Lebanon, and Syria).

MID COM Chart (02/10/2025)



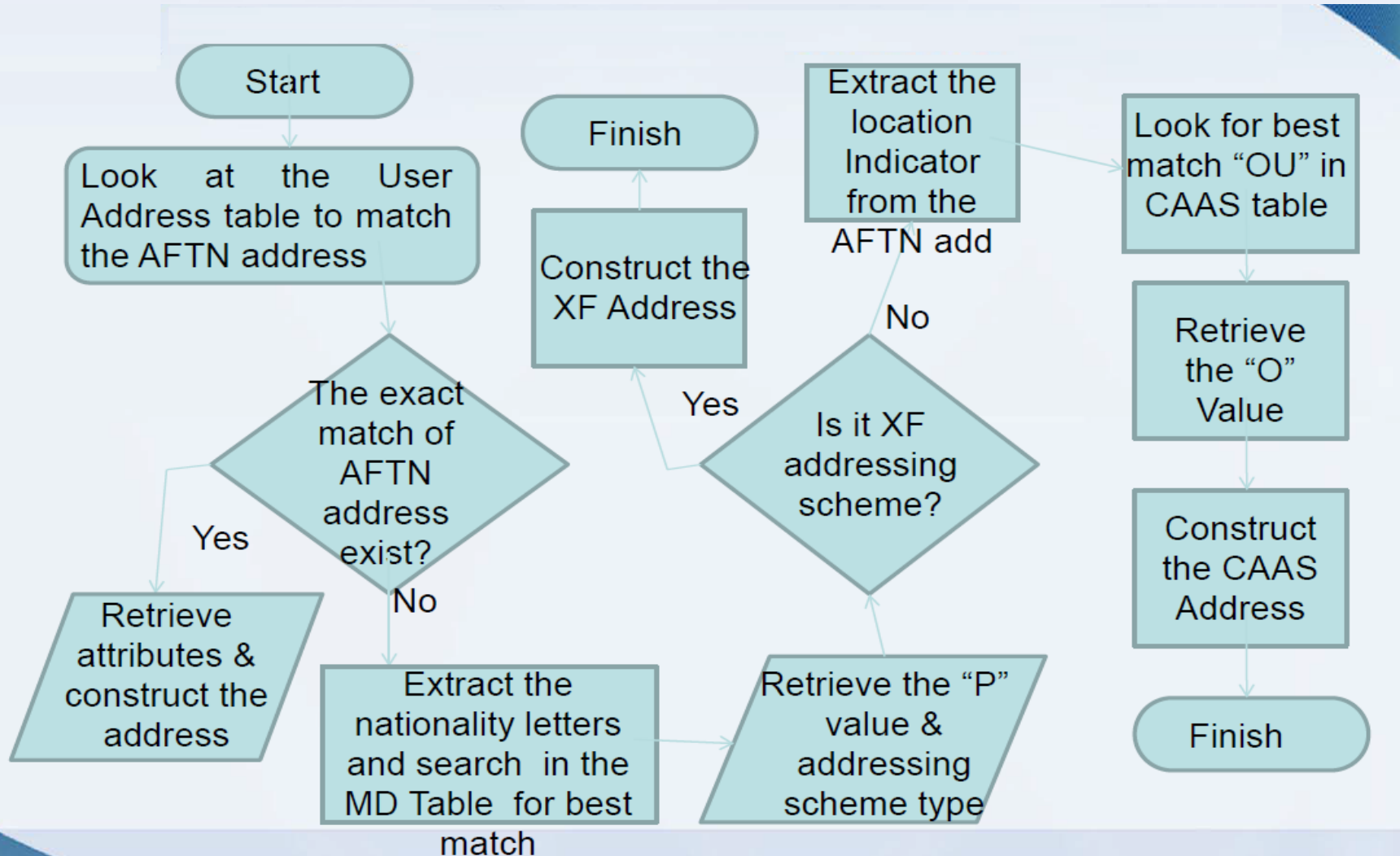
Miscellaneous issues

- ☐ It was noted that some of the AFTN/AMHS routing tables in MID region are inconsistent and need to be optimized and updated regularly .
- ☐ It was also noted that most of MD COM Centres route FH and FJ addresses towards Africa while they should be routed towards Europe since FH and FJ are British territories.
- ☐ Any change of a PRMD value (like ZK => DPRK recently) requires update of all AMHS Routing Tables world-wide.
- ☐ Address Look-Up tables may need to be updated in external systems which have a P3 or P7 interface to the MTA .

Inconsistencies of AMC data

- ❑ The EUROCONTROL AMC Project Manager has notified all AMC users about been receiving a number of complaints about the inconsistencies between the data held in the AMC and what it is actually implemented on AMHS switches. This is causing addressing and routing problems within the global network.
- ❑ It was recommended to :
 - Update AMHS switch in accordance with the validated AMC data (*AMHS MD Register table*, *AMHS CAAS table*, and *Look-up User Addresses*)

Routing in AMHS System



Postponement operational cycle, OPER. 283

- ❑ The outcome of the AFS to SWIM Transition Task Force OG meeting held on Thursday 9th October 2025 discussed a WP on 'OPER.283 – Day 28 on Christmas Day' and it has been agreed to postpone operational cycle, OPER. 283 for implementation on Day 28, 25th December 2025.
- ❑ The AMC application will be locked on Friday 28th November 2025 and unlocked on 26th December 2025. Proposals for OPER.283 can then be resumed for implementation on Day 28, 22nd January 2026.

AIRAC Cycles Dates

A

View AIRAC Cycle

View AIRAC Cycle

View AIRAC Dates

Start Date

End Date

M	T	W	T	F	S	S
October 2025						
		1	2	3	4	5
6	7	8	9	10	11	12
13	14	15	16	17	18	19
20	21	22	23	24	25	26
27	28	29	30	31		

M	T	W	T	F	S	S
November 2025						
					1	2
3	4	5	6	7	8	9
10	11	12	13	14	15	16
17	18	19	20	21	22	23
24	25	26	27	28	29	30

M	T	W	T	F	S	S
December 2025						
1	2	3	4	5	6	7
8	9	10	11	12	13	14
15	16	17	18	19	20	21
22	23	24	25	26	27	28
29	30	31				

M	T	W	T	F	S	S
January 2026						
			1	2	3	4
5	6	7	8	9	10	11
12	13	14	15	16	17	18
19	20	21	22	23	24	25
26	27	28	29	30	31	






M	T	W	T	F	S	S
February 2026						
						1
2	3	4	5	6	7	8
9	10	11	12	13	14	15
16	17	18	19	20	21	22
23	24	25	26	27	28	

M	T	W	T	F	S	S
March 2026						
						1
2	3	4	5	6	7	8
9	10	11	12	13	14	15
16	17	18	19	20	21	22
23	24	25	26	27	28	29
30	31					

The Procedure AIRAC Cycle

General View

Day in Cycle	Data Entry by CCC / Ext COM / AMC	Data Validation and Processing by AMC	ACK Phase by CCC	ACK Processing by AMC	Data Retrieval and Implementation (by CCC) Data Publication (by AMC)
1					
2					
3					
4					
5					
6					
7					
8					
9					
10					
11					
12					
13					
14					
15					
16					
17					
18					
19					
20					
21					
22					
23					
24					
25					
26					
27					
28					

LEGEND		AMC Operator locks COM Centres		AMC Operator releases the routing matrix
		AMC Operator transfers to pre-operational area		AMC Operator moves data to operational area, unlocks COM Centres and makes official publications; CCC Operators use new data for operational service
		Weekends		

The AMC phases

- There are Five AMC phases in an AIRAC cycle as follows:

1. Data Entry Phase

Starts day 1, suspended day 7

2. Data Validation and Processing Phase

Starts day 8, ends day 14

3. Acknowledgement Phase

Starts day 15, ends day 20

4. Acknowledgement Processing Phase

Starts day 21, ends day 24

5. Data Retrieval and Implementation Phase

Starts day 25, ends day 28

1. Data Entry Phase

Starts day 1, ends day 7.

- CCC & external COM Operator enters new data in the background area for network inventory, routing directory, address management, and user capabilities .

2. Data Validation and Processing Phase

Starts day 8, ends day 14.

AMC Operator Lock COM centres, create/modify routing tables, process statistic data, propose new data to the CCC/External COM Operators by moving background data into the pre-operational area.

3. Acknowledgement Phase

Starts day 15, ends day 20.

CCC/external COM Operator Check new data in the pre-operational area and acknowledge it.

4. Acknowledgement Processing Phase

Starts day 21, ends day 24.

AMC Operator Check and process all ACKs, if there are NACKs coordinate with those COM Centres, release the routing matrix.

5. Data Retrieval and Implementation Phase

Starts day 25, ends day 28.

CCC/External COM Operator retrieve new data in the preoperational area; implement address and routing data in the systems at 1100 UTC of Day 28.

AMC Operator move pre-operational data to operational area on day 28 at 11 UTC unlock the COM centres.

AMHS/AMC WORKSHOP

- ☐ In order to use EUR AMC efficiently by MID users and to ensure that COM Centre staff is properly trained to maintain the availability, continuity, accuracy and integrity levels requested for the service provided, the MIDMAC team requests ICAO MID Office to organize AMHS/AMC Workshop/Training for new AMC users in the near future .
- ☐ The MIDAMC team leader will deliver the required training.
- ☐ The proposed training can be for three days for AMC only or for five days for AMC with AMHS background.
- ☐ By means of such training, it is expected that COM Centre staff will obtain the appropriate skills to specify, evaluate, operate and maintain an AMHS system in a appropriate manner and consequently provide harmonised, homogenous and consistent AMHS services.

Roles of MIDAMC team

The MIDAMC provide the following main tasks on daily to support its operations:

- ☐ provide AMC tables each AIRAC date;
- ☐ check the routing tables for consistency;
- ☐ help in activating new AMC users in coordination with Eurocontrol;
- ☐ keep the Network Inventory data updated;
- ☐ coordinate and communicate with MID states and support AMHS Planning and Implementation when required;
- ☐ Coordinate and validate user Addresses with SITA and the EUR AMC .

Status of IWXXM Implementation

- ☐ AMHS Extended Service is a pre-requisite to exchange IWXXM messages.
- ☐ The implementation of providing a suite of MET products (METAR/SPECI, TAF, SIGMET, AIRMET, TCA, VAA and SWXA) in IWXXM format is a prerequisite to the System Wide Information Management (SWIM) and a requirement during the ASBU-B1 time frame (requirement 5 November 2020).
- ☐ States to provide update on the status of IWXXM implementation.
- ☐ It was observed Saudi IWXXM messages are not in line with the profile as in ICAO EUR Doc 020 – EUR AMHS Manual, Appendix. H

Action by the Meeting:

☐ The meeting is invited to:

- a) note the content of this paper;
- b) contribute by providing any planned actions related to intra-regional & interregional connections;
- c) urge relevant States to migrate AFTN/CIDIN connections to AMHS;
- d) urge states that have not updated AFTN/AMHS routing, Connections, and Focal points in AMC to do so;
- e) update AMHS switch in accordance with the validated AMC data.
- f) urge states to provide update on the status of IWXXM implementation; and
- g) request ICAO MID Office to organize AMHS/AMC Workshop/Training for new AMC users.