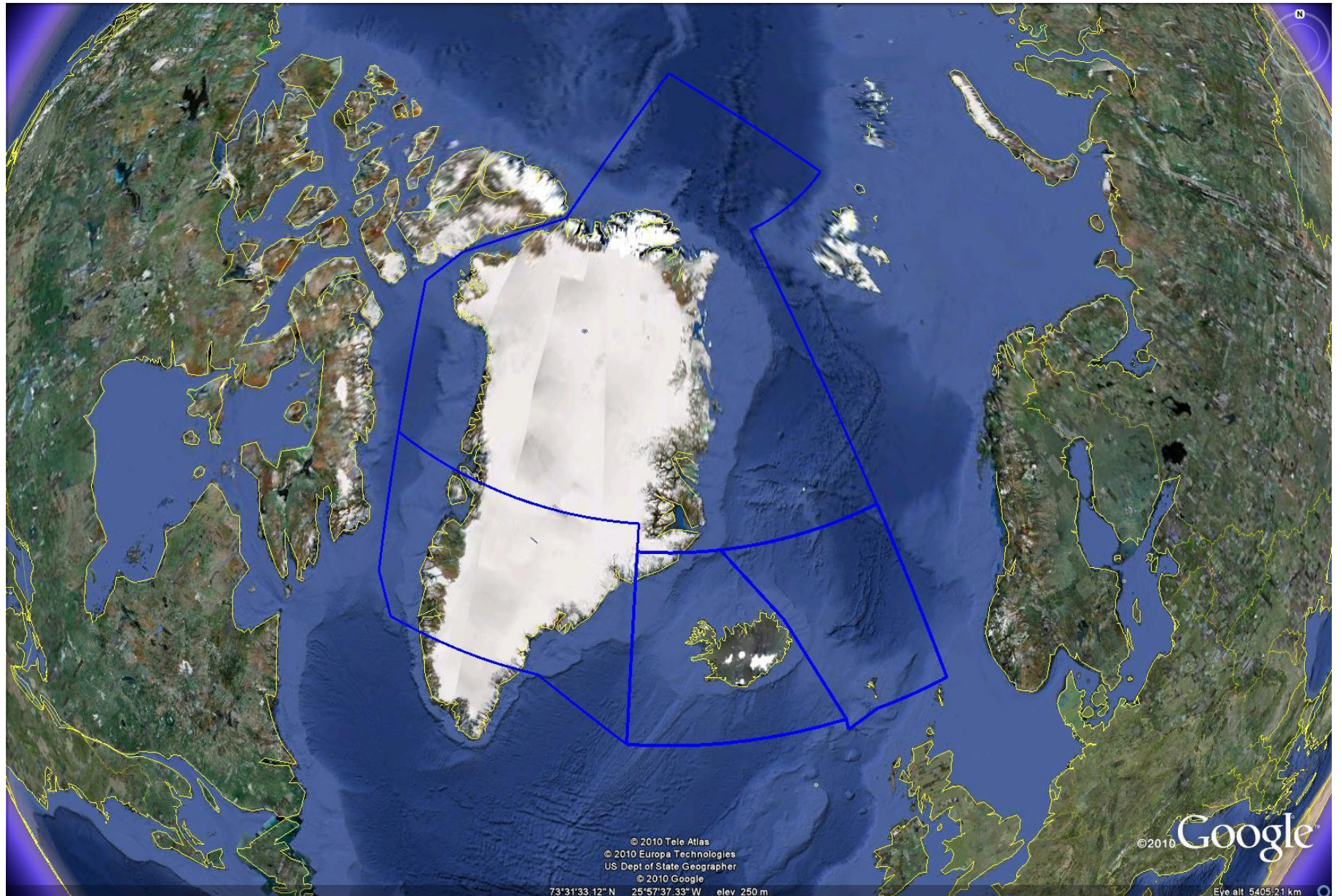

Actions taken from Iceland in response to uncoordinated flights over high seas

Ásgeir Pálsson

Director ANS



Svæðaskipting BIRD



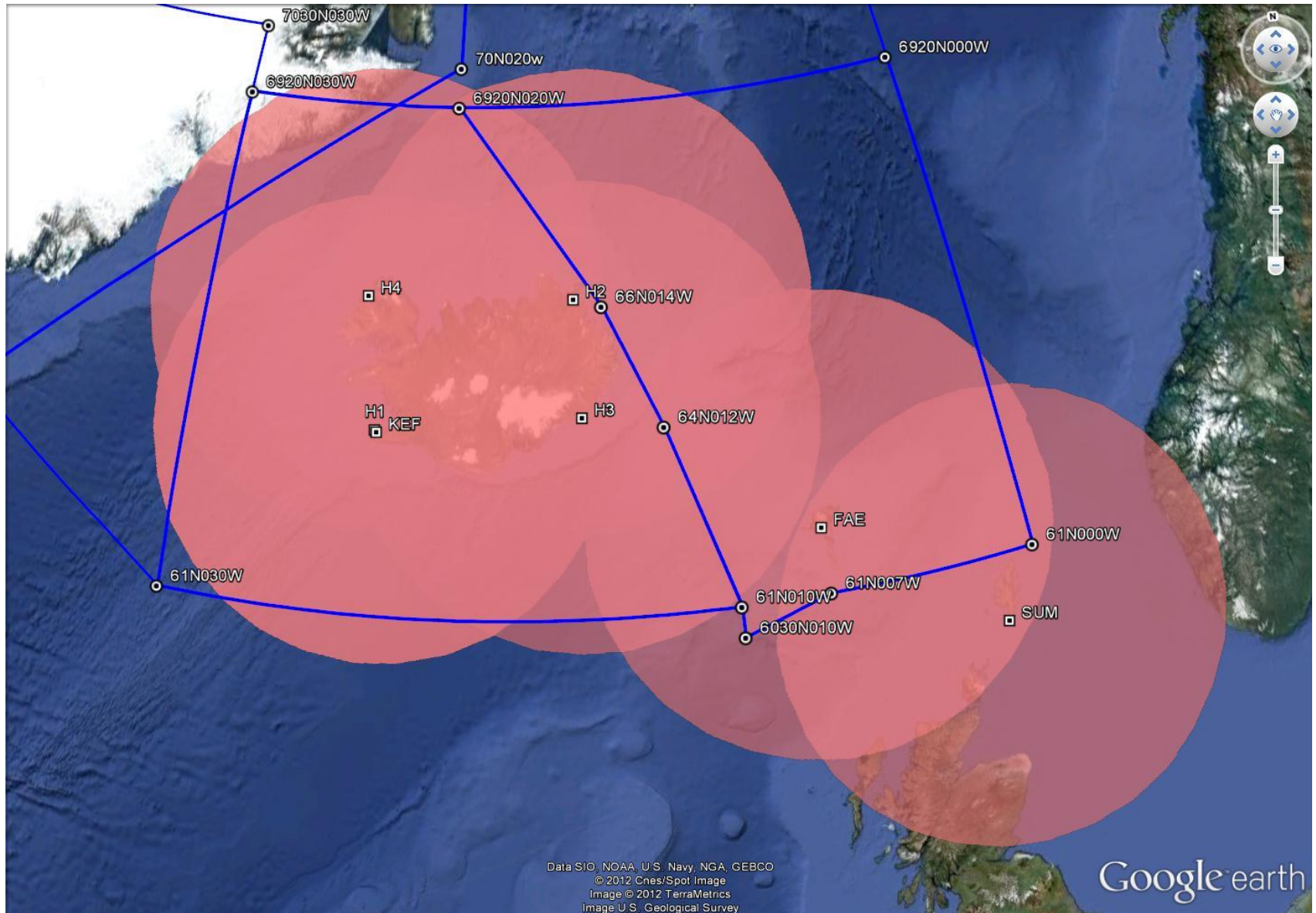


© 2011 Google
© 2011 Tele Atlas
© 2011 Europa Technologies

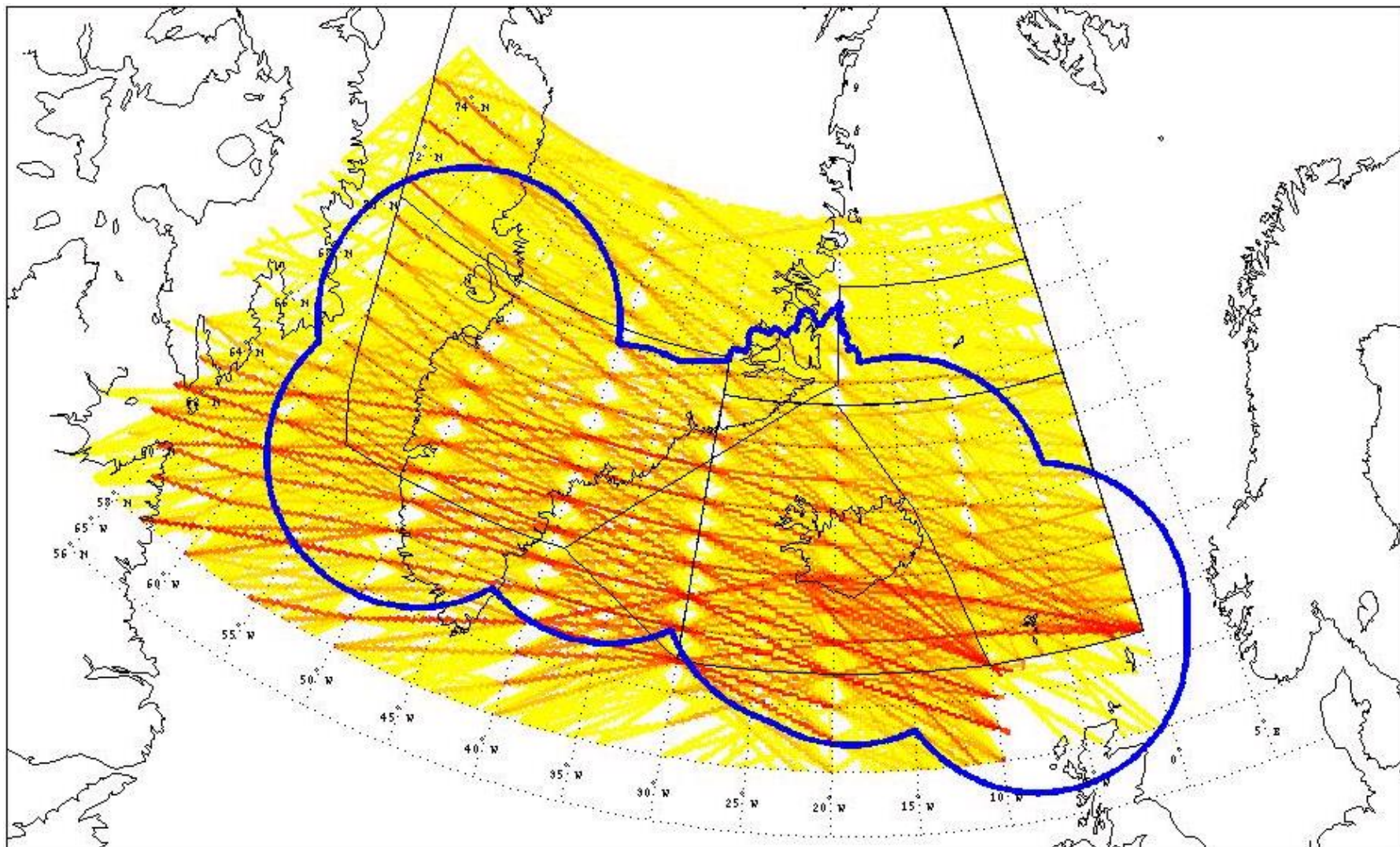
Data: US Dept of State Geographer, EBCO
lat: 53.705449° lon: 14.973357° elev: 32 m

© 2010 Google
Eye alt: 3747.88 km

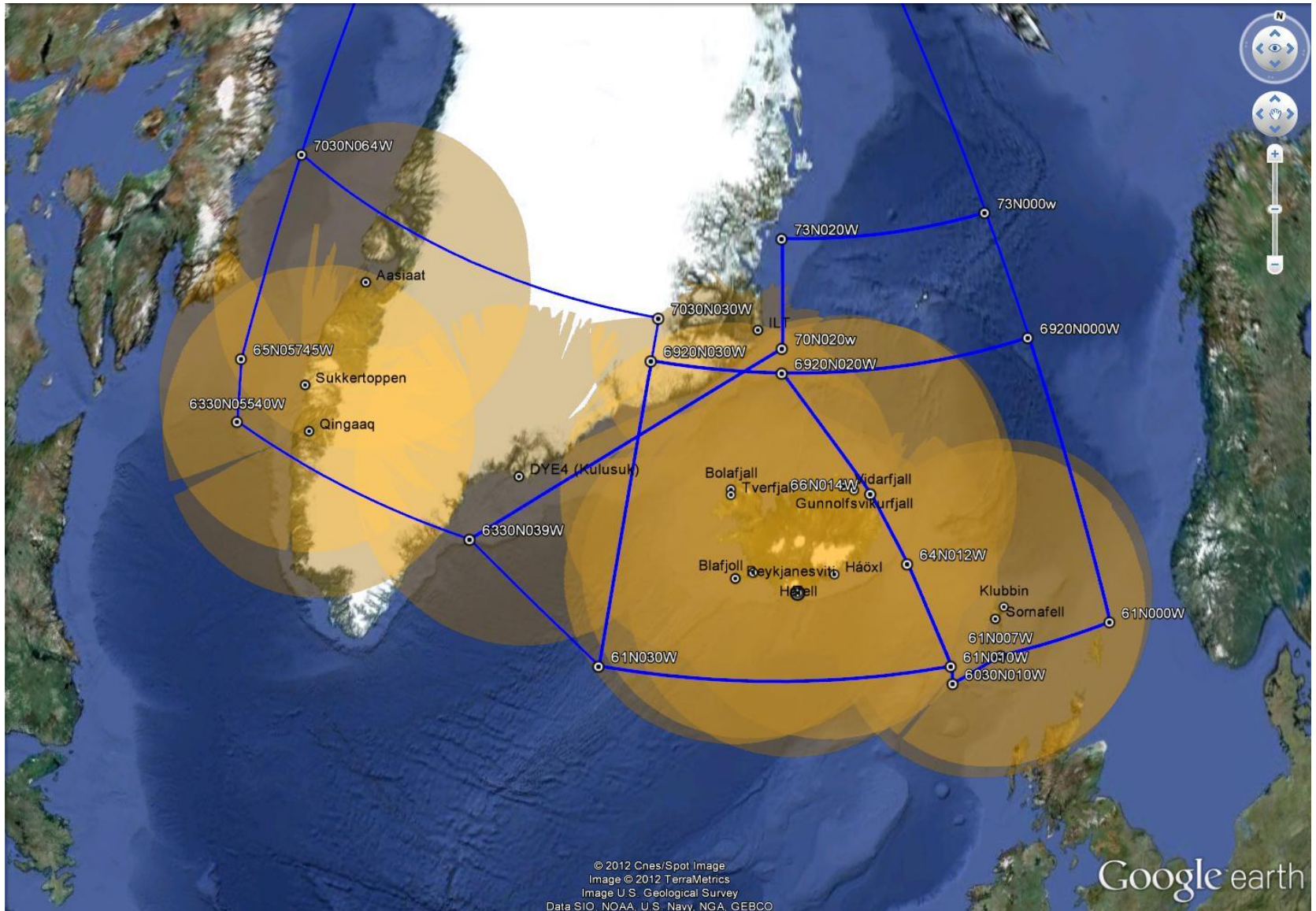
Appendix: Radar Coverage



Appendix – Traffic Heatmap



Appendix: ADS-B Coverage





ALPHA SCRAMBLE



ALPHA Scramble

-
- > *Military activates ADIA airspace F240-F280*
 - > *Receives clearance to the airspace from Keflavik tower*
 - > *CRC coordinates different flight levels for the ADIA airspace (usually 10000 feet block below F300) with ACC/OAC*
 - > *Usually get more than one ADIA airspace and on tactical bases more*
 - > *Flights are handed over to CRC before entering the active ADIA airspace*

ALPHA Scramble

-
- > *If unknown traffic is below 30000 feet the ADIA airspace is enough*
 - > *If unknown traffic is above 30000 feet and/or ACC_OAC is unable to ensure higher level the fighters will;*
 - > *Clear SADADO (Separation of Aircraft During Air Defence Operation)*
 - > *Military will ensure separation of fighters from all commercial traffic*

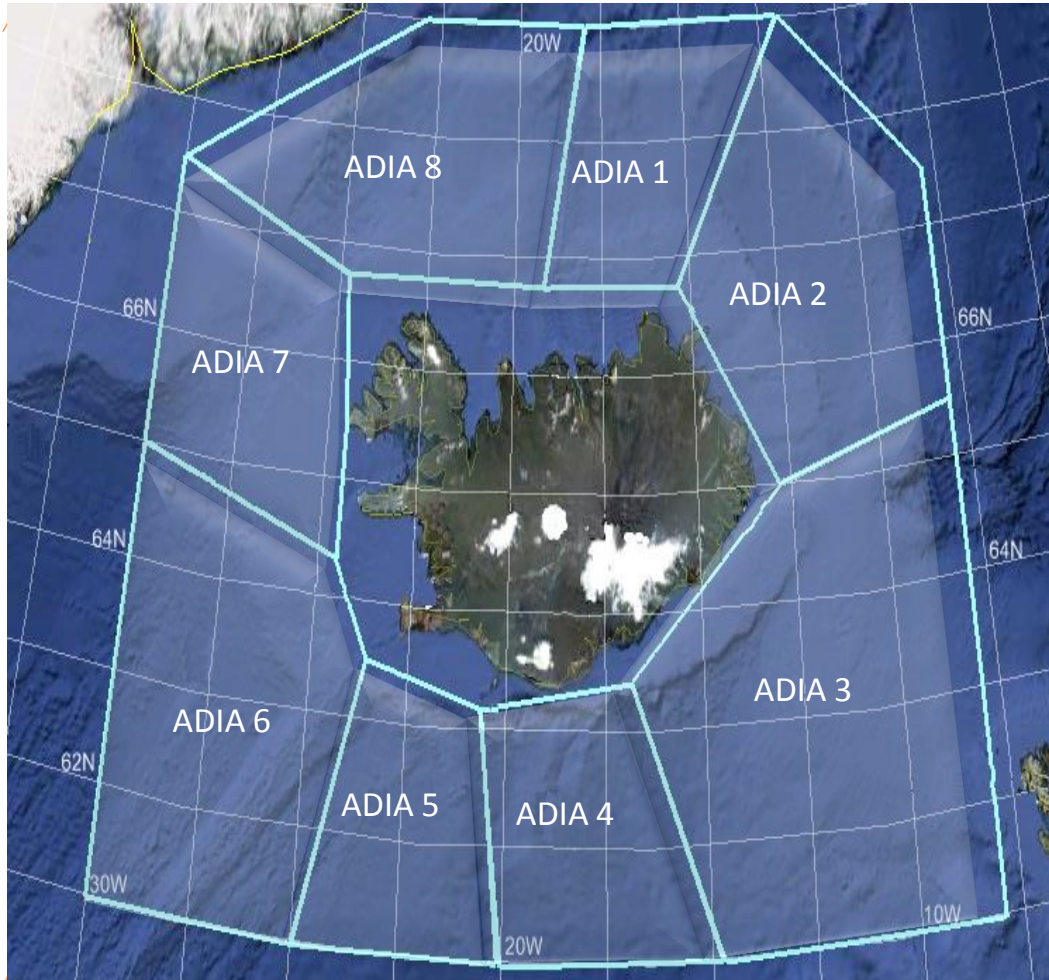
ALPHA Scramble

-
- > *ADIA airspace reduces coordination*
 - > *Over 90% of the time the unknown traffic is below commercial traffic levels*
 - > *ACC/OAC makes sure no commercial traffic is within the airspace*
 - > *If we are unable to approve higher or the requested levels*
 - > *More phone-calls*
 - > *Traffic info to commercial traffic*

ADIA airspace

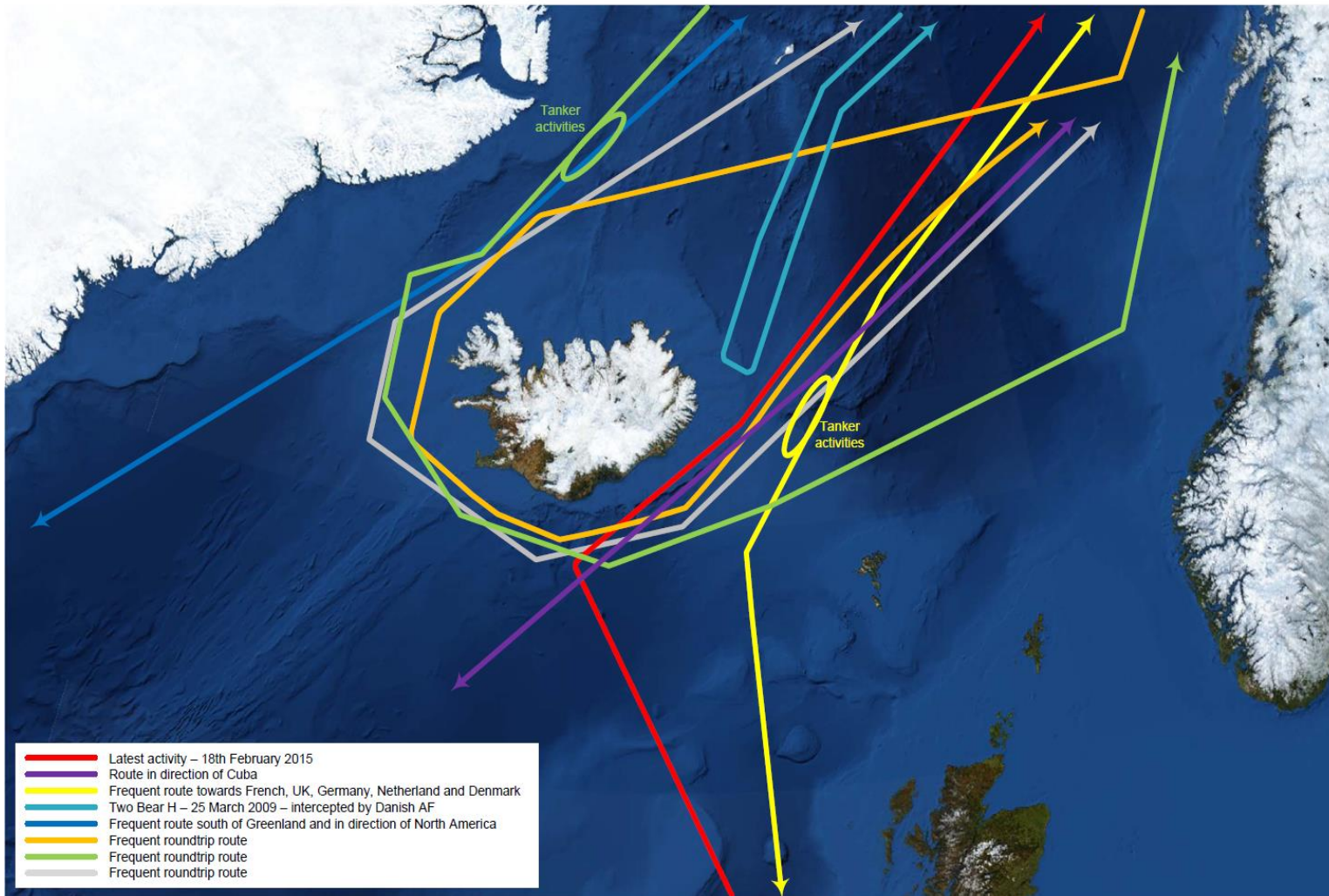
Activated
F240-F280

Can get more
than one
airspace



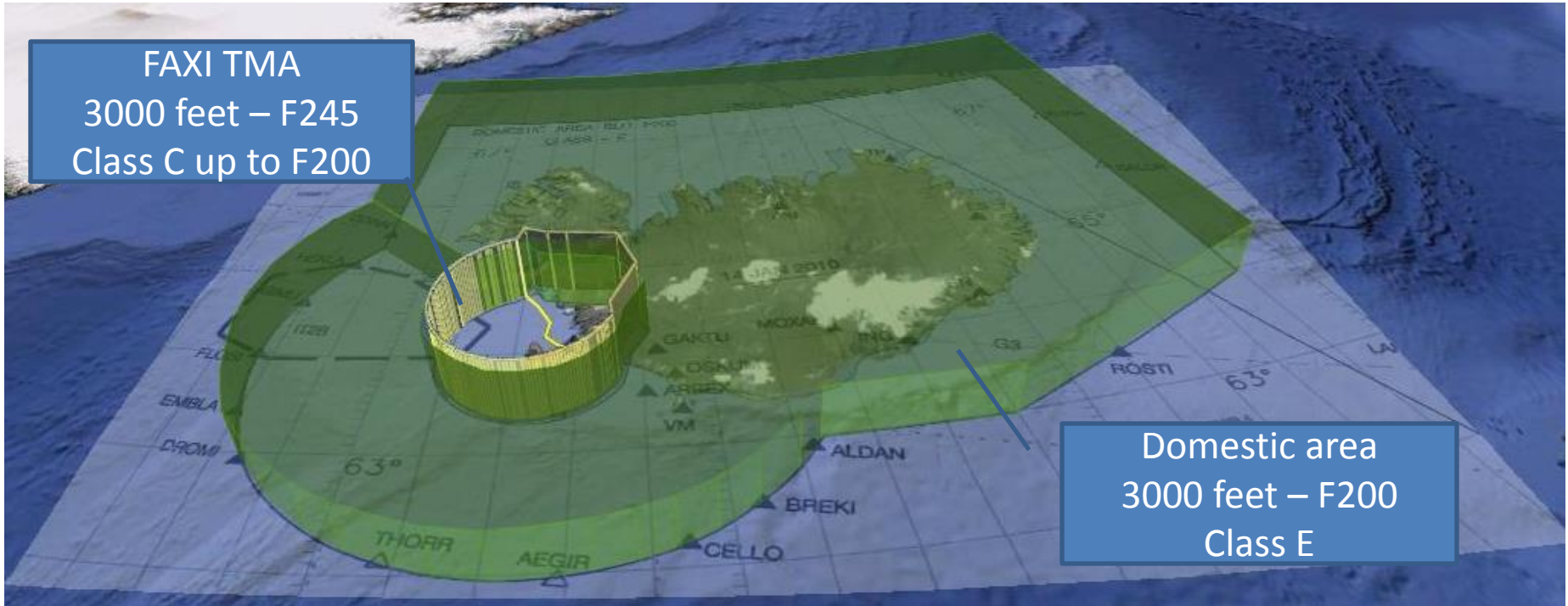
Higer level on
tactical bases

Close
coordination
if fighters are
SADADO

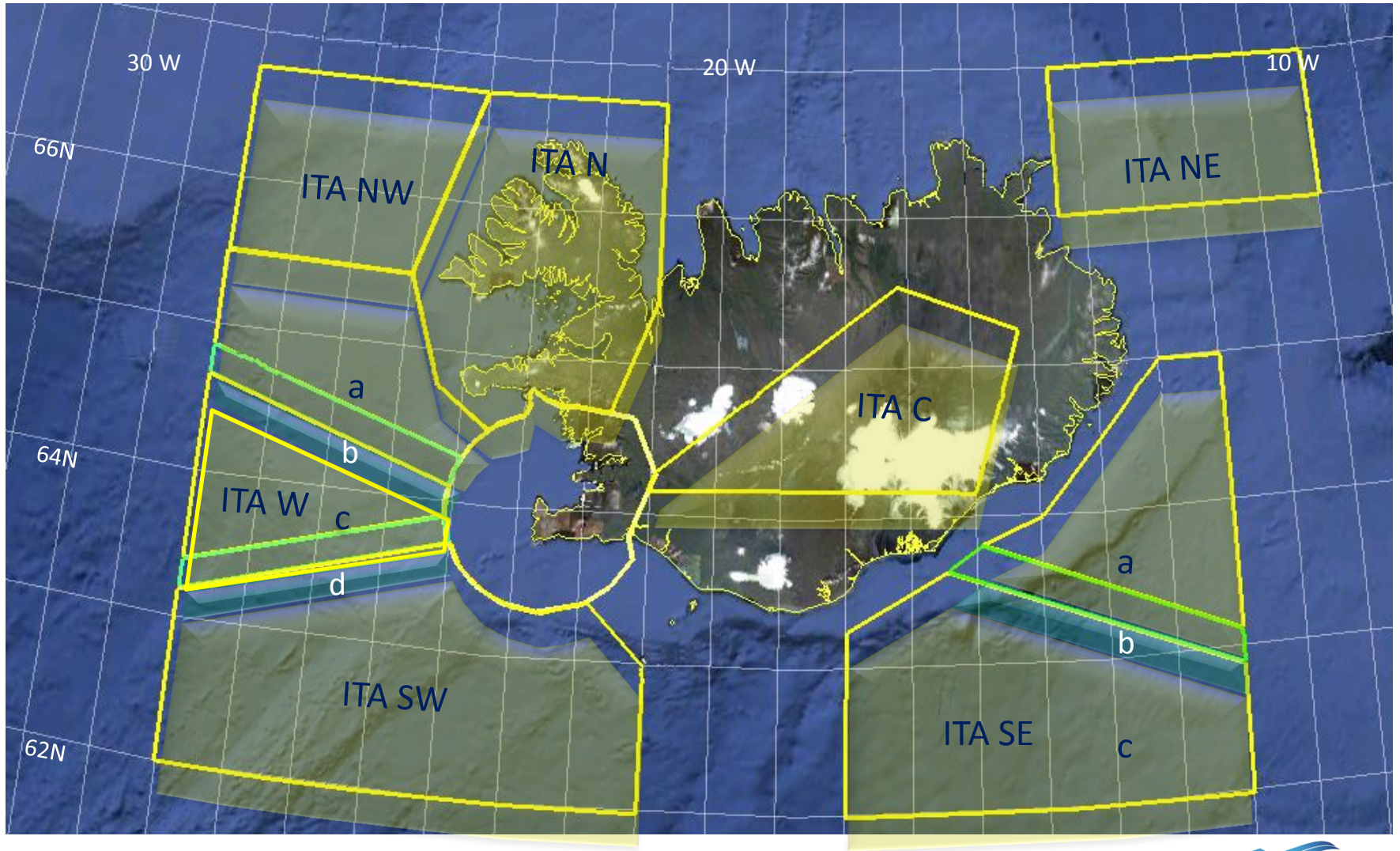




FAXI boundary



ITA AREAS



ITA - C



- F180 – F290
- Higher if traffic permits

ITA -N



- F180 – F290
- Higher if traffic permits

ITA - NE



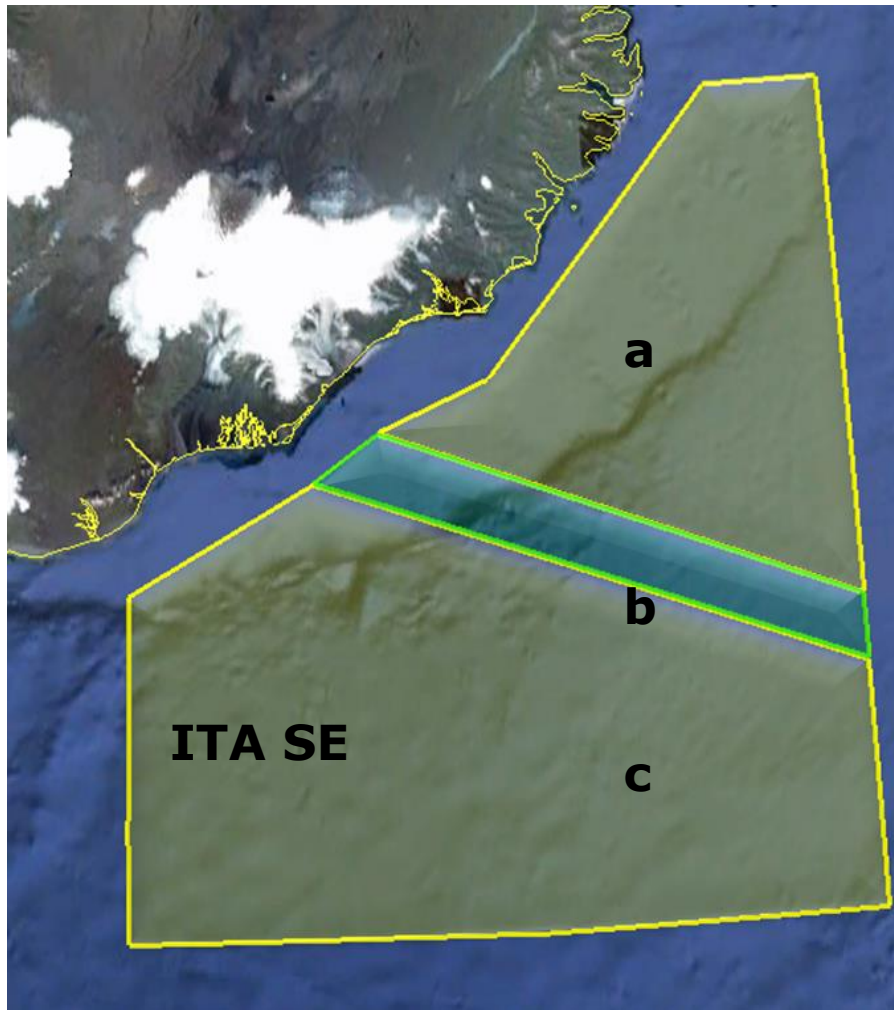
- 3000 feet MSL – F290
 - Lower limit FL055 outside Domestic area
- Higher if traffic permits

ITA -NW



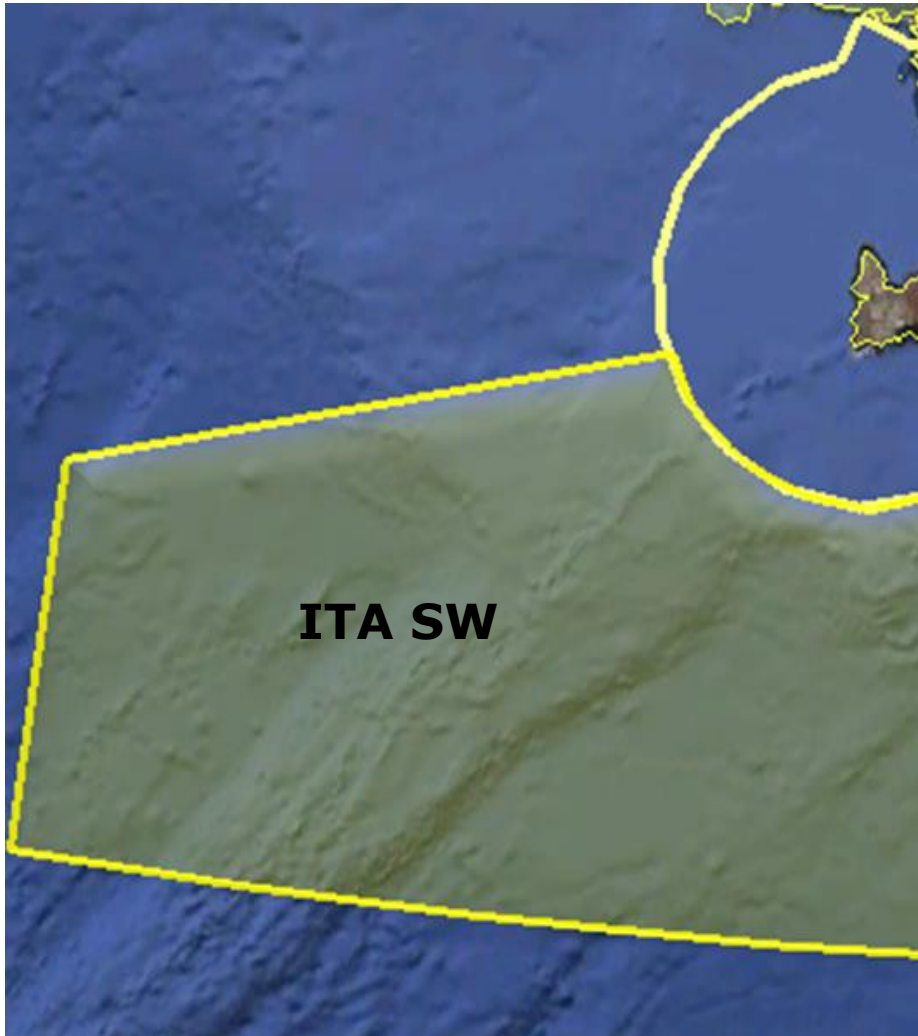
- 3000 feet MSL – F290
 - Lower limit FL055 outside Domestic area
- Higher if traffic permits

ITA - SE



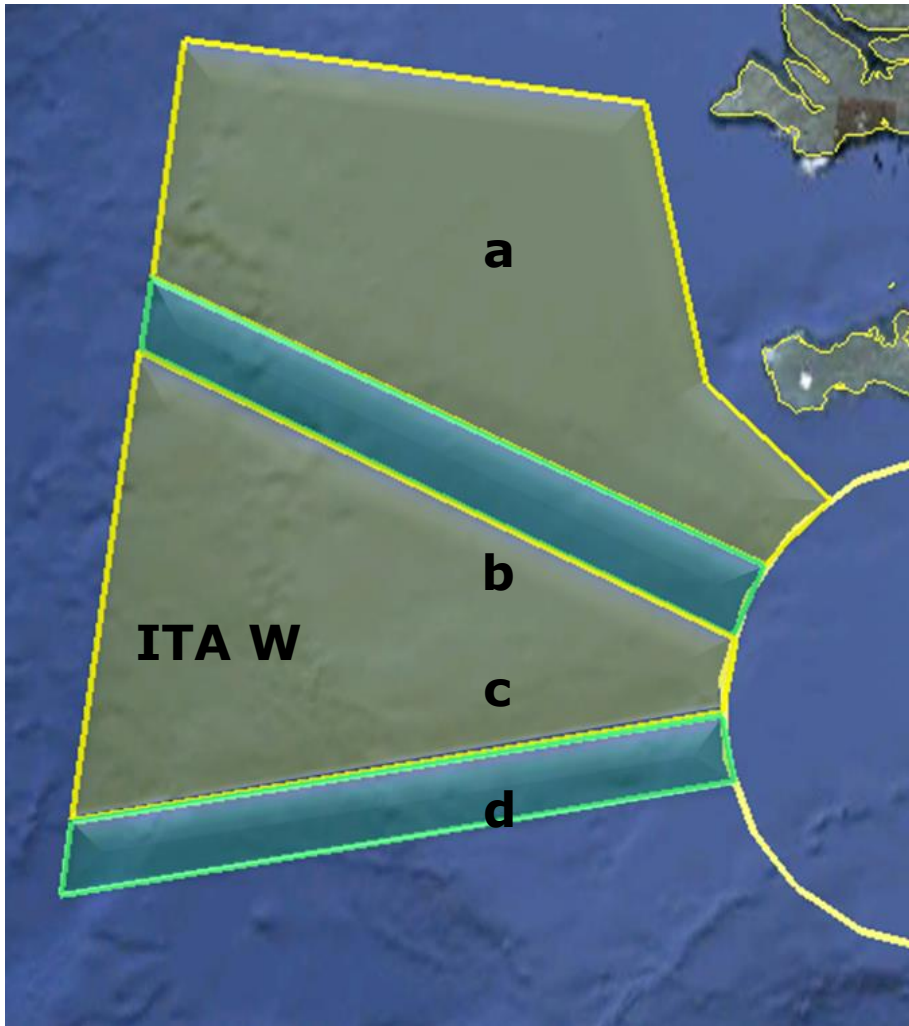
- a and c 3000 feet MSL
 - F290
 - Lower limit FL055 outside Domestic area
- Higher if traffic permits
- b F240-F290
 - Used for transition between a og c

ITA - SW



- 3000 feet MSL – F290
 - Lower limit FL055 outside Domestic area
- Higher if traffic permits

ITA - W

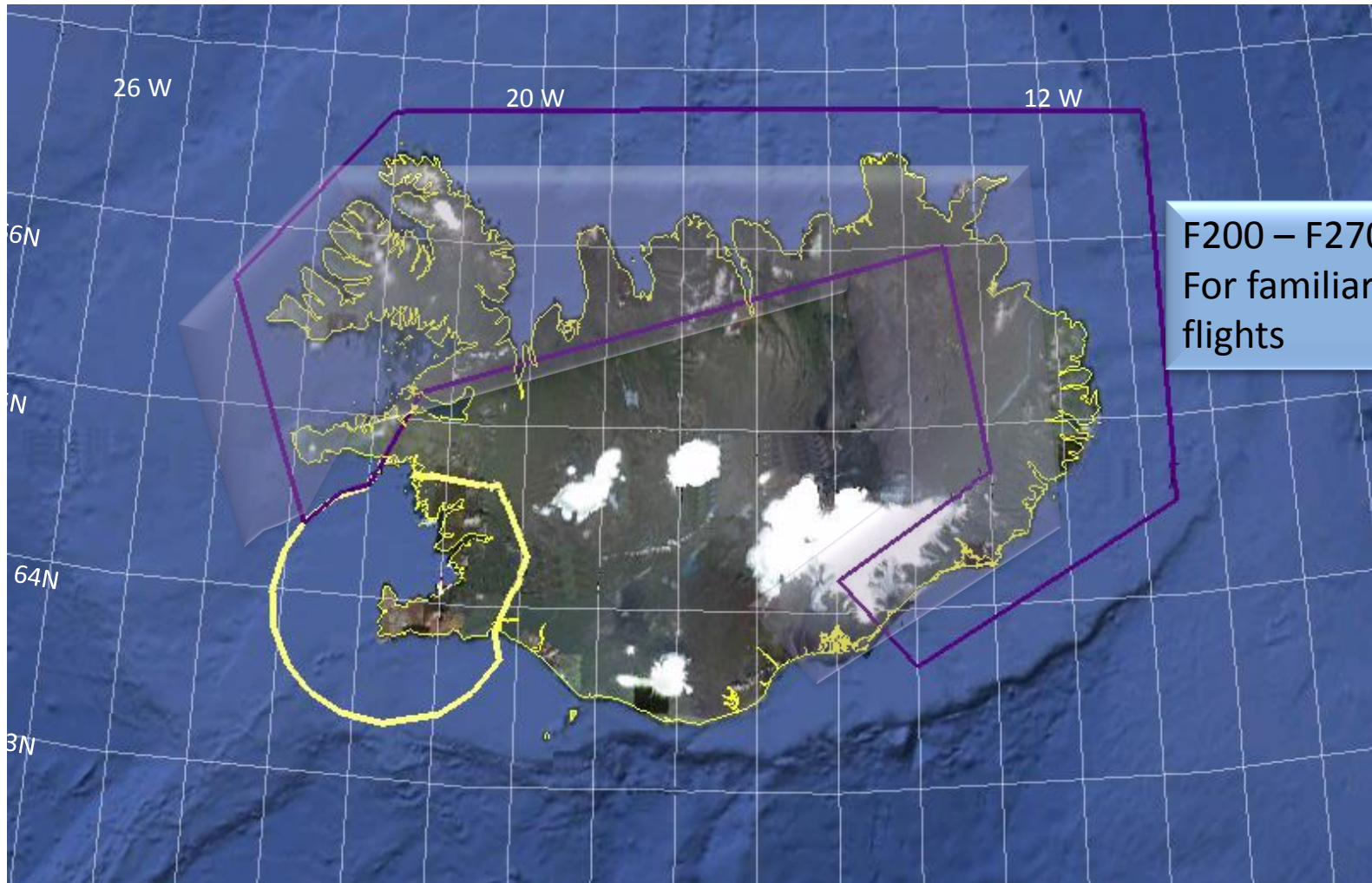


- a and c: 3000 feet MSL – F290
 - Lower limit FL055 outside Domestic area
- Higher if traffic permits
- b og d: F240 – F290
 - Used for transition between a og c

VFR and Familiarisation flights

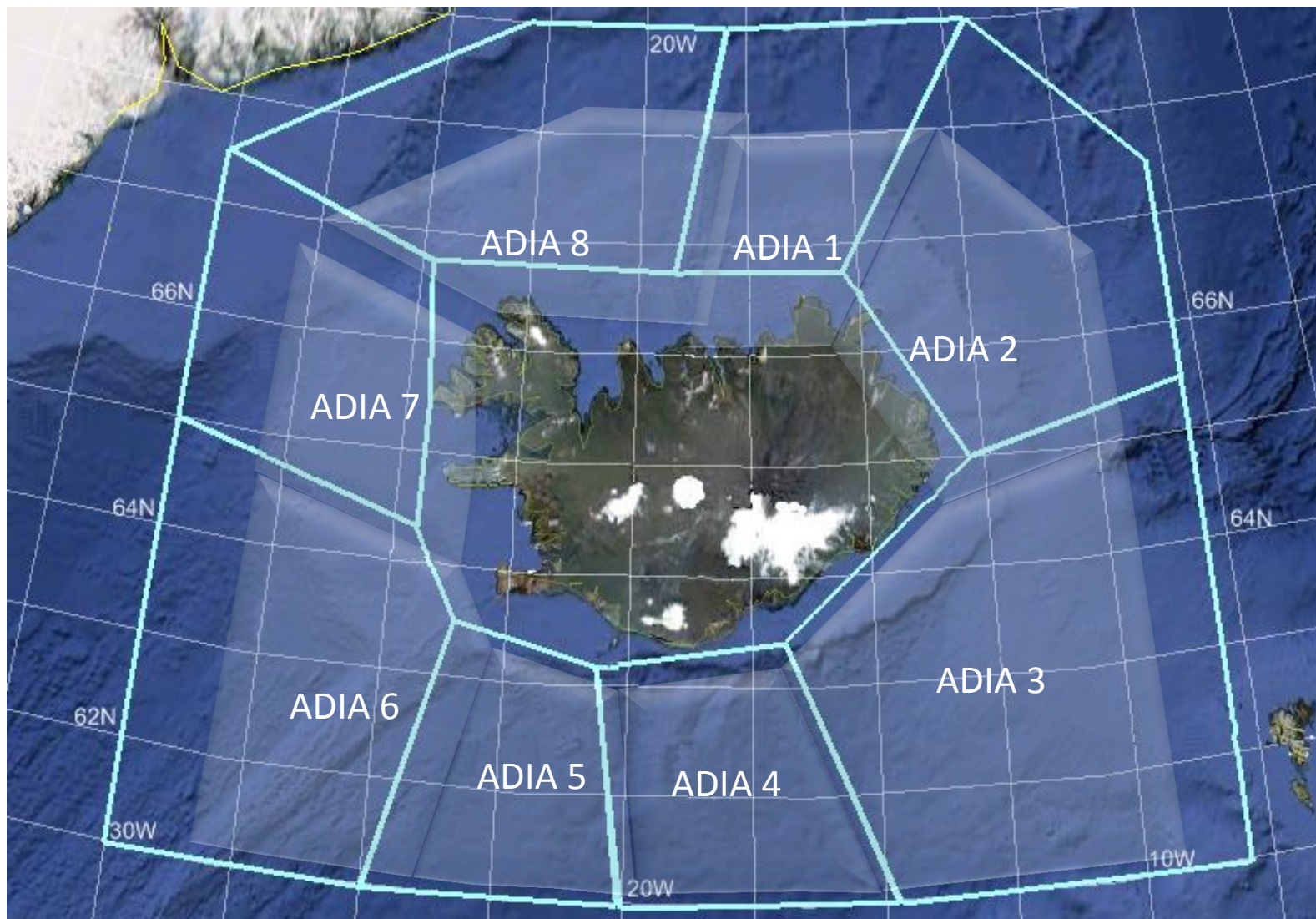
- > *File a VFR/IFR flight plan with Reykjavík ACC
 - > *Call Flight Data Specialist**
- > *If flying outside pre-approved airspace, aircraft must remain on Reykjavík control 119.7 MHz*
- > *Advise Reykjavík Shift Manager if approaches are to be flown into Akureyri and Egilsstaðir*

AREA F

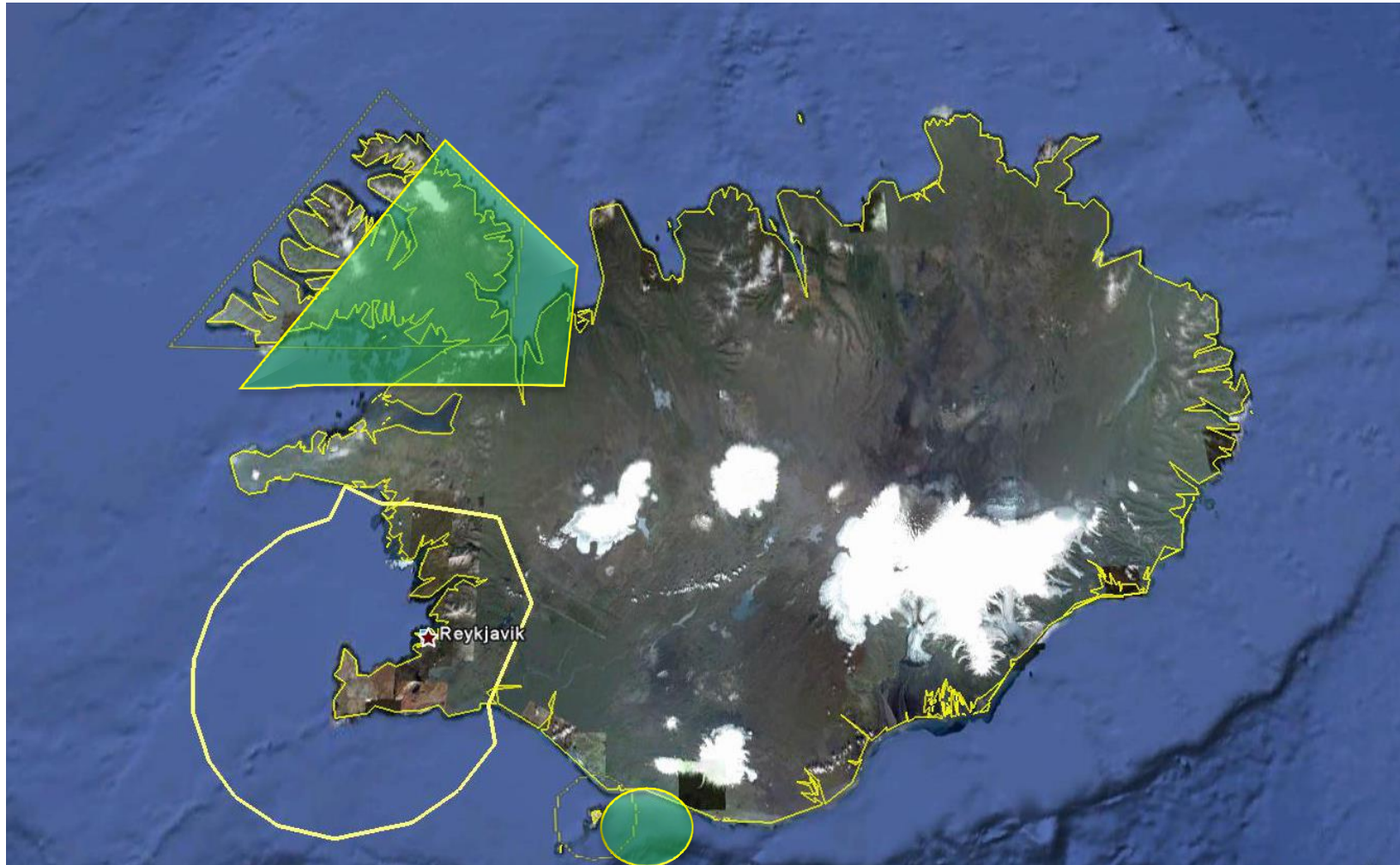


F200 – F270
For familiarisation
flights

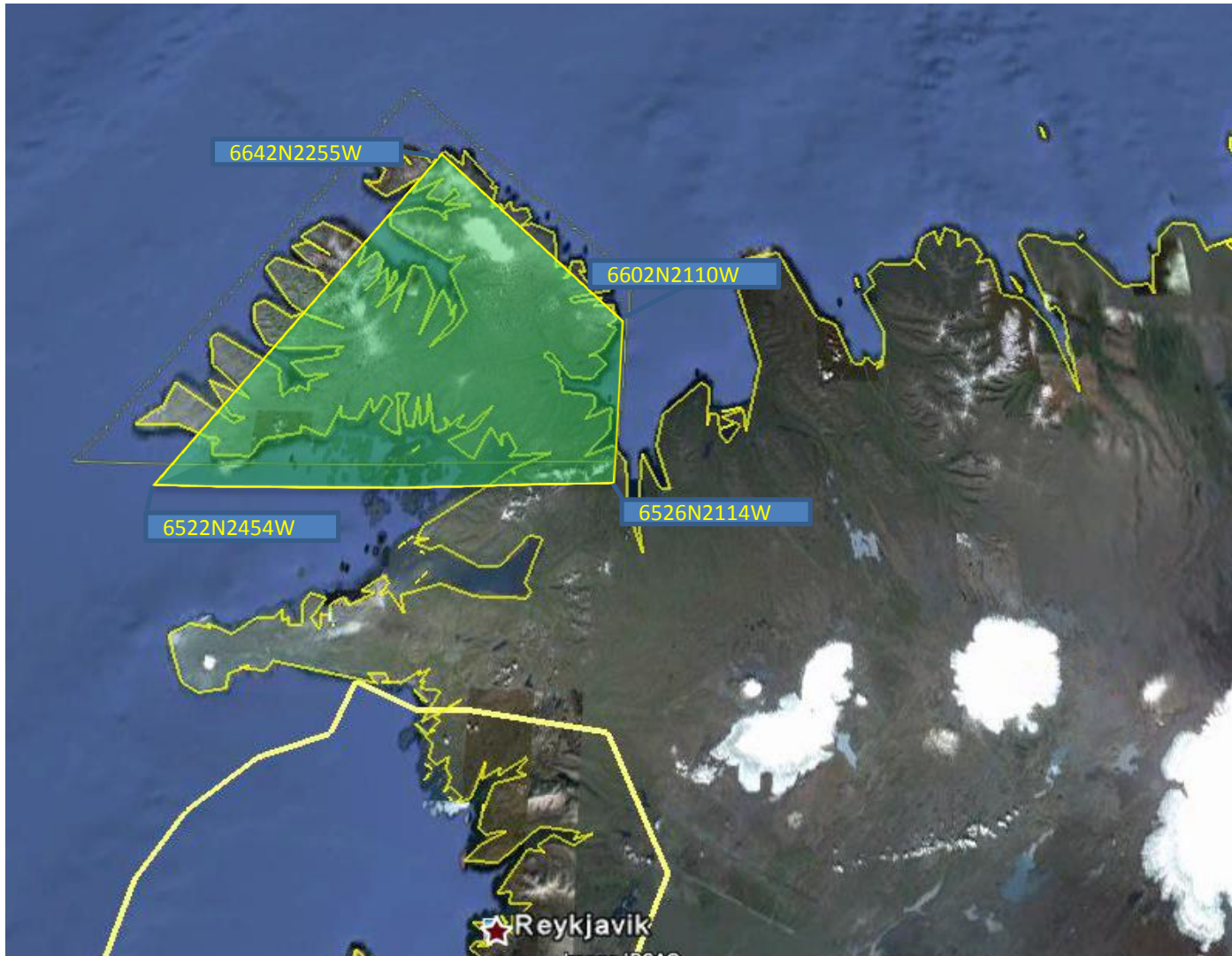
ADIA airspace



Bird sensitive area



West fjords



Vestmannaeyjar





