



The RSB ICAO CORSIA Sustainability Framework

ICAO AND ECAC JOINT INFORMATION SEMINAR ON CORSIA ELIGIBLE FUELS

9 March 2022

Agenda

- Introduction to the RSB
- RSB ICAO CORSIA
 - Options & requirements
- Implementation of Sustainability Requirements
- GHG LCA
- Chain of Custody Certification
 - Mass Balance and Book & Claim



Elena Schmidt
Executive Director
RSB

OUR WORK SUPPORTS 3 INTERCONNECTED SHIFTS

Driven by urgent need for systemic transformation

Current scenario

1

Negative environmental impact

Climate change

Unsustainable production practices

Increasing use of finite resources

2

Negative social impact

Unsustainable livelihoods

Food insecurity

Water insecurity

3

Extractive approach to resources

Exploitation of natural resources

Linear approach

Waste creation

Ideal scenario



Environmentally sustainable

1.5°C warming cap achieved & net zero emissions

Sustainable approach

Fossil fuel left in the ground



Socially sustainable

Human & labour rights guaranteed

Global nutrition assured

Global water access assured



Bio-based and circular resource use

Productive ecosystems

Maximum circularity

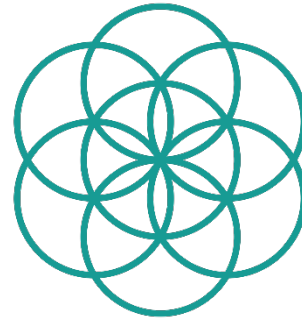
Global nutrition assured

RSB'S ROLE

An impact alliance

OUR VISION

We envision the transformation to a circular and bio-based economy contributing to climate change mitigation, the restoration of ecosystems, and enhancement of livelihoods.



OUR MISSION

RSB equips global industry, policy makers and other stakeholders to overcome existing barriers and drive the transition to a bio-based and circular economy with positive impacts for people and the environment.

ABOUT THE RSB
What we do



RSB's vision

We envision the transformation to a circular and bio-based economy contributing to climate change mitigation, the restoration of ecosystems, and enhancement of livelihoods.

CONVENING

Advancing innovation

IMPLEMENTATION

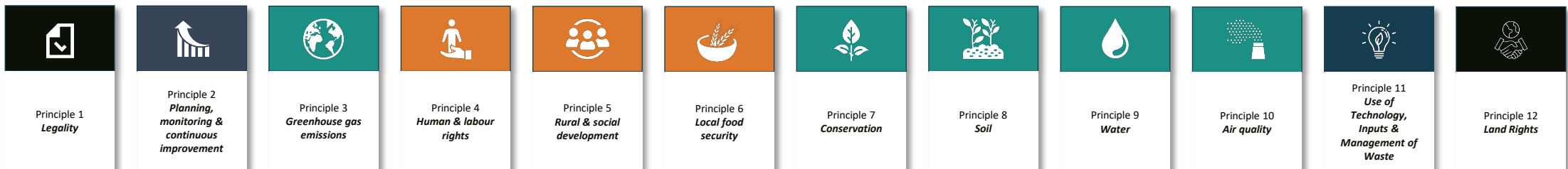
Guiding sustainability implementation

CERTIFICATION

Ensuring scale-up of positive Impacts



Foundational framework
12 Principles and Criteria

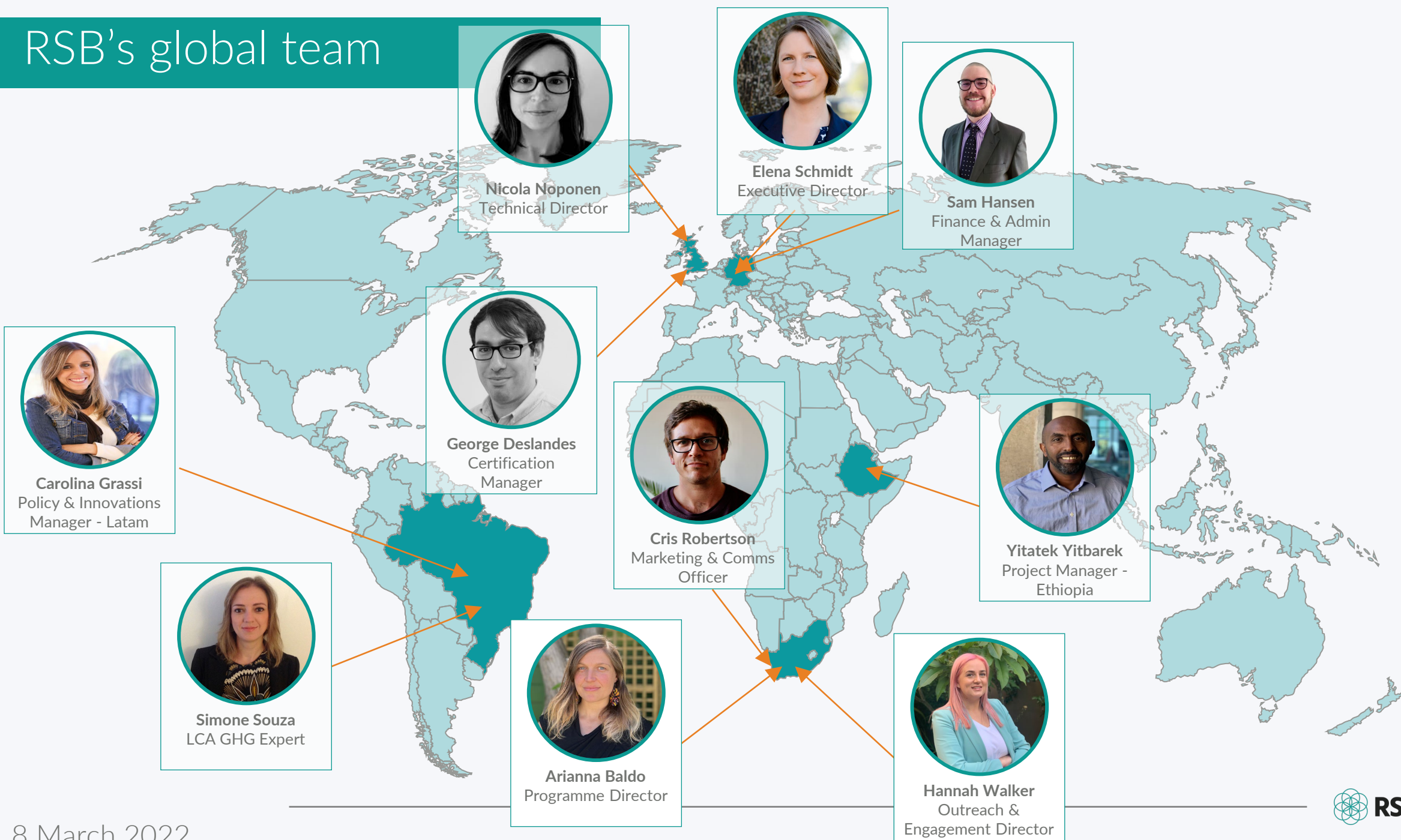




RSB member platforms relevant to SAF

- SAF Policy Platform
- PtX working group
- Airports Platform

RSB's global team





RSB ICAO CORSIA

Overview of options and requirements

- The **RSB ICAO CORSIA Standard [RSB-STD-12-001]** specifies requirements for operators along the *Sustainable Aviation Fuel* (SAF) supply chain to produce SAF eligible under CORSIA.
- This scheme is globally applicable for operators producing, processing and trading feedstock, intermediates or SAF





1. Certification of CORSIA eligible SAF:

This certification comprises the sustainability criteria as approved by the ICAO Council.

2. Certification of RSB compliant CORSIA eligible SAF:

This certification comprises the sustainability criteria as approved by the ICAO Council plus the RSB Principles and Criteria.

Key difference:
sustainability criteria
covered

**Other requirements (e.g. traceability, calculating actual life cycle emission values, auditing procedures) are same for both options.*

RSB ICAO CORSIA
Certification key requirements



Type of operator	Sustainability Requirements (RSB's P&C)	Chain of Custody	GHG emissions
Biomass producer (e.g. farm that supplies biomass like sugar cane)	✓	✓	✓
Point of Origin (e.g. farm / mill that supplies waste biomass like agricultural residues, UCO or crude tall oil)	Waste feedstock-specific requirements, if any	✓	
Industrial operator (e.g. company that processes feedstock into products, like oil processors or SAF refineries)	✓	✓	✓
Trader (e.g. companies buying and selling feedstock, intermediate or finished products, distributors)		✓	✓

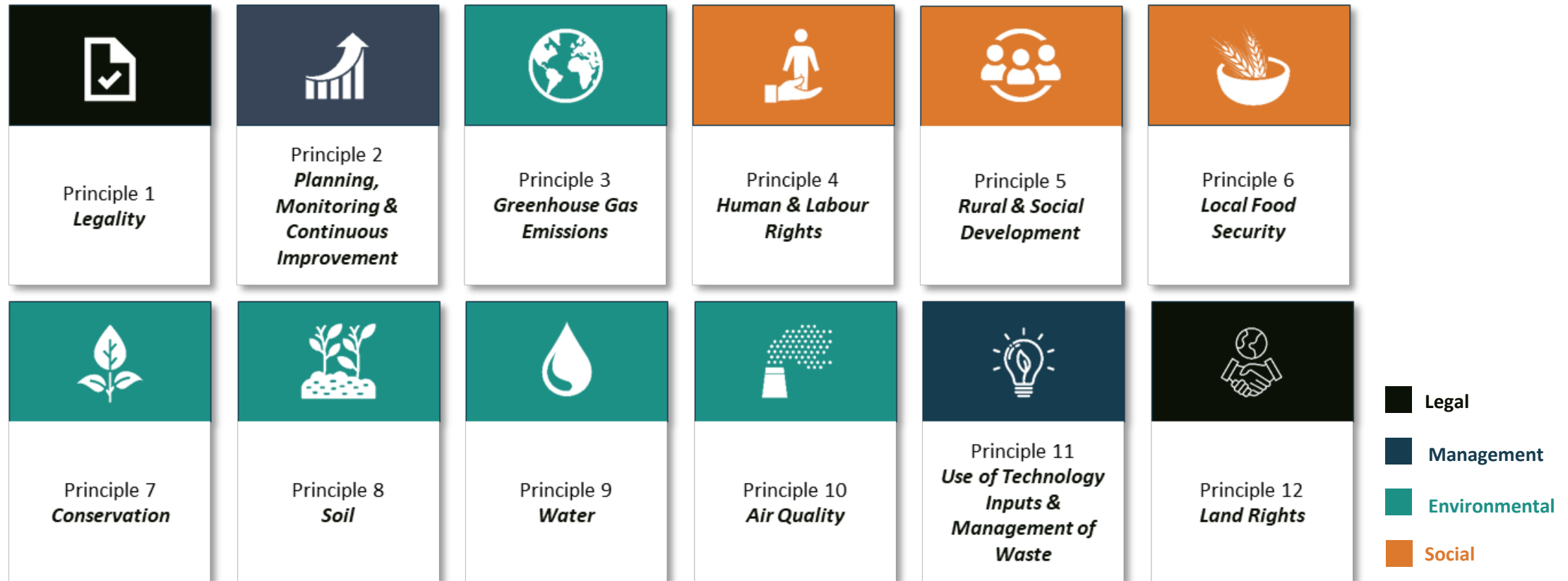


RSB ICAO CORSIA

Sustainability requirements

RSB ICAO CORSIA

RSB principles & criteria



RSB Principles and Criteria shall apply to any **primary biomass producer** (e.g. oil crop farm) and **industrial operator** (e.g. SAF producer) along the supply chain.

RSB Certification already covers 10 additional environmental and socio-economic themes

RSB principles & criteria

Risk-based approach

Risk category (Risk assessment tool)	<ul style="list-style-type: none">- Defines the certificate validity- Defines audit types and intensity: on-site or remote, and sampling
RSB screening tool	<ul style="list-style-type: none">- Identifies sustainability issues relevant for the operations- Indicates the audit team composition
Waste/residues	<ul style="list-style-type: none">- Considers the impact per category of materials- Defines requirements to address specific risks
RSB regional indicators	<ul style="list-style-type: none">- Covers existing regulatory context- Consider tools/standards already used in a region
Collaboration	<ul style="list-style-type: none">- Benchmarks with other standards- Combined audits

RSB principles & criteria

Risk-based approach

RSB certification uses a **risk-based approach**.

This aims to focus on relevant topics and decrease burden for low-risk feedstocks and operations.

Key elements:

Screening tool

Scoping exercises that helps identify:

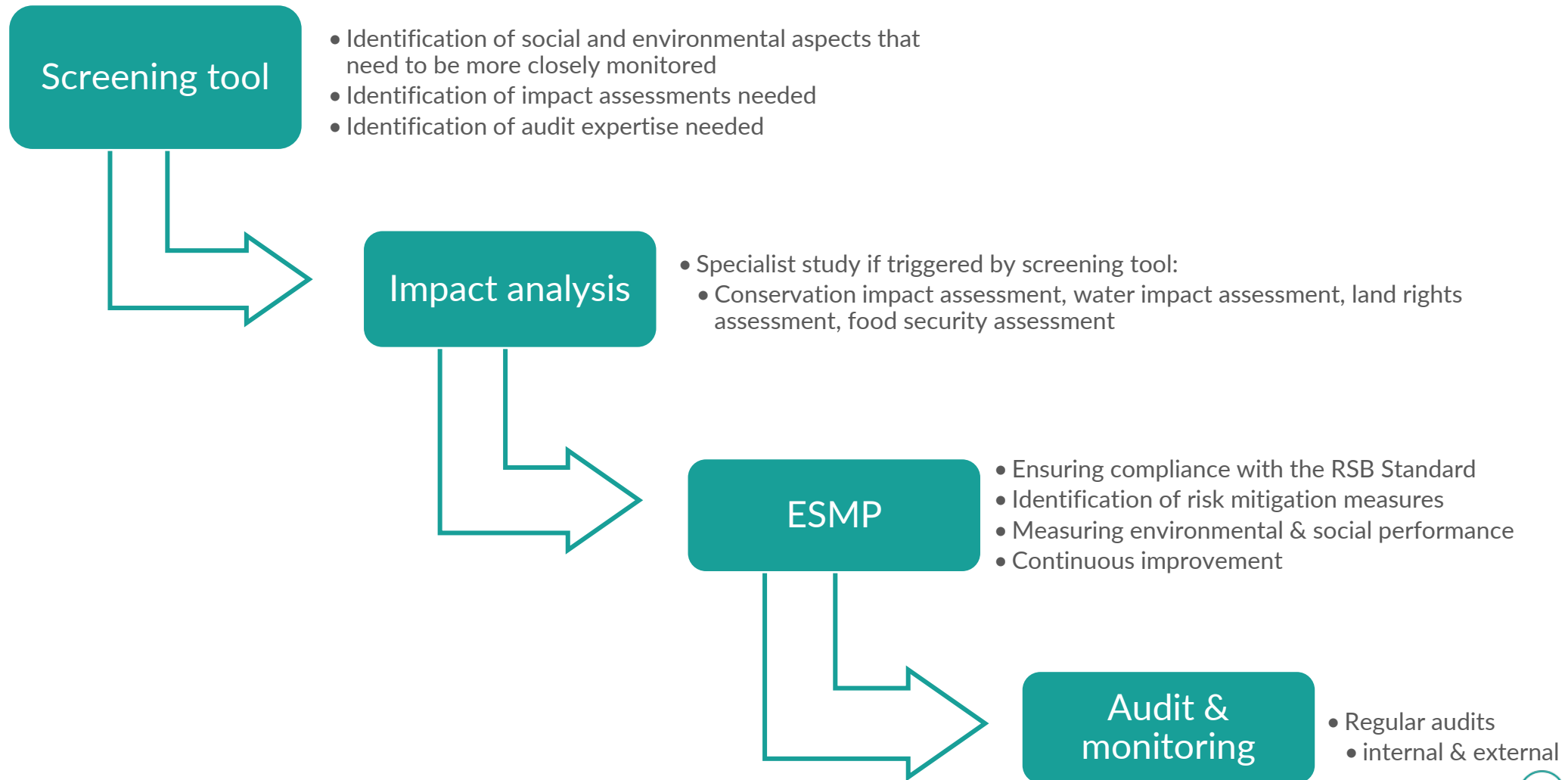
- **Which RSB principles & criteria are applicable** to the operator's certification scope and that will need to be included in the certification
- Whether **specialised impact assessments** must be conducted for serious sustainability risks

Risk assessment

Excel-based risk assessment tool that helps identify:

- **Operator risk level** (high, medium, low) based on socioeconomic context, legal/judiciary issues, complexity of supply chain
- The risk level informs the frequency and intensity of RSB audits (high = physical audit every 2 years, medium = 3 years, low = 5 years)

RSB risk-based approach Screening tool



RSB risk-based approach

Risk assessment tool

Used for identifying and evaluating the relevant risks for an operator in the context of the RSB certification system.

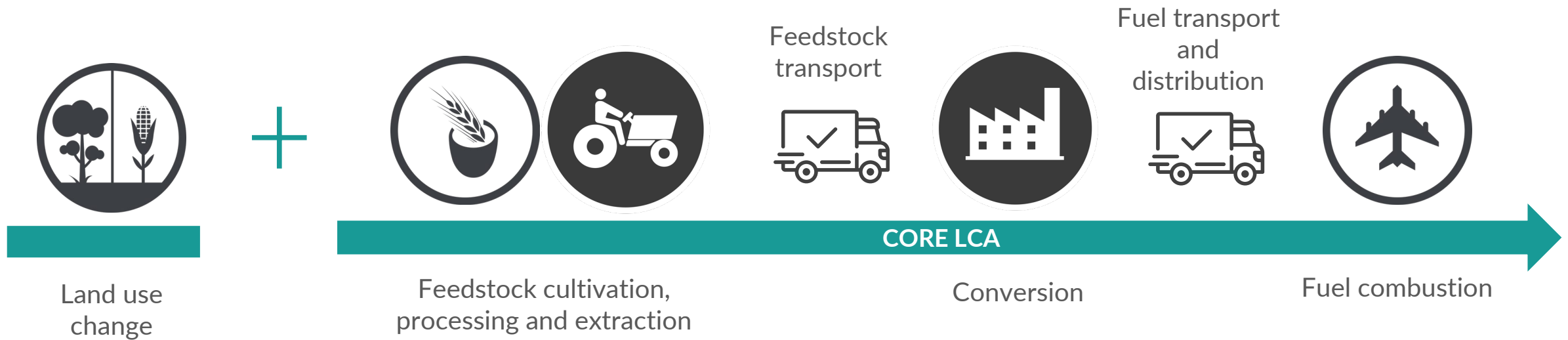
Certification & legal	Management system	Supply chain	Governance	Environment	Labour & social
<input type="checkbox"/>	<input type="checkbox"/>	<input type="checkbox"/>	<input type="checkbox"/>	<input type="checkbox"/>	<input type="checkbox"/>
<input type="checkbox"/> Suspensions	<input type="checkbox"/> Internal auditing	<input type="checkbox"/> Complexity	<input type="checkbox"/> Voice & accountability	<input type="checkbox"/> Deforestation risk	<input type="checkbox"/> Strikes
<input type="checkbox"/> Legal actions	<input type="checkbox"/> Data processing & procurement management	<input type="checkbox"/> Oversight	<input type="checkbox"/> Political stability	<input type="checkbox"/> Water stress	<input type="checkbox"/> Migrant workers
<input type="checkbox"/> Grievances		<input type="checkbox"/> Multiple certification systems	<input type="checkbox"/> Corruption		<input type="checkbox"/> Safety performance



RSB ICAO CORSIA

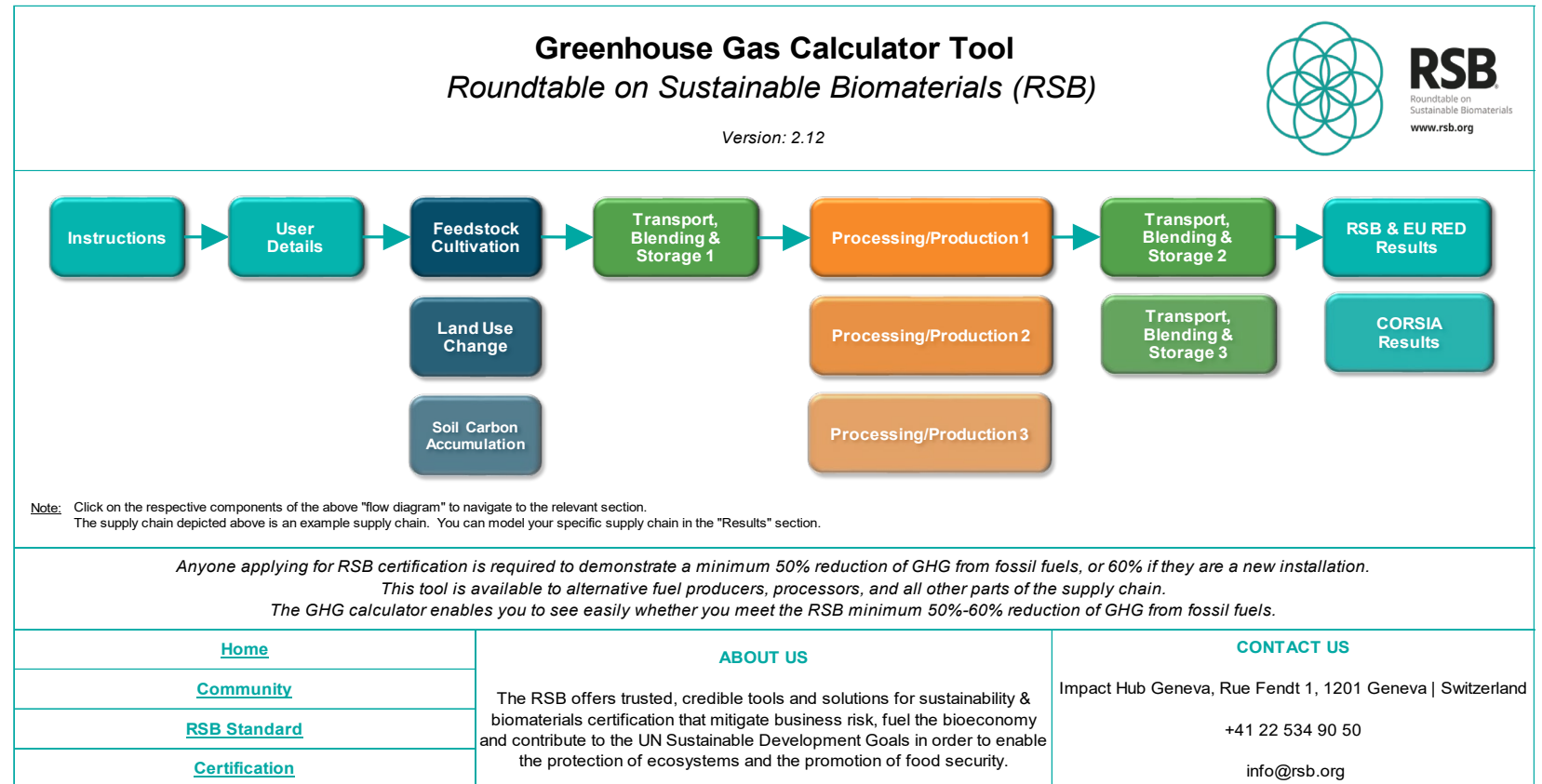
GHG LCA

RSB ICAO CORSIA
GHG system boundaries



- ✓ The **core LCA** value can be determined either on the basis of **default values** or on the basis of calculated **actual LCA values**.
- ✓ The **ILUC** value must be determined on the basis of **default values**.
- ✓ The **DLUC** value must be determined on the basis of **context specifics**, in line with the RSB methodology for land use changes.

- Excel-based calculator
- Embeds all GHG methodologies
 - RSB Global, EU RED & CORSIA
- Simple navigation to move between supply chain steps
- Instruction notes built into the tool
 - no user manual needed
- Includes emissions factors from Ecoinvent & Biograce
 - can be overwritten with actual values (to be verified by auditors)





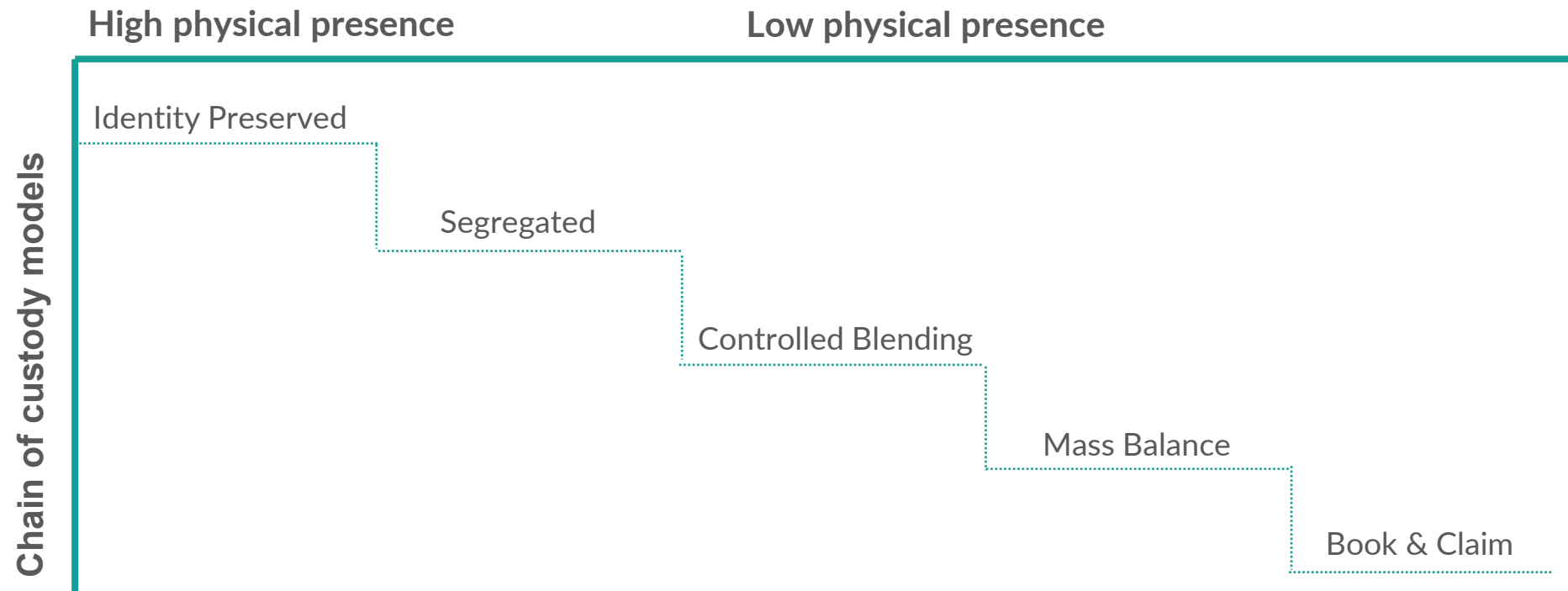
RSB ICAO CORSIA

Chain of custody: Mass Balance and Book & Claim

Chain of custody Different models

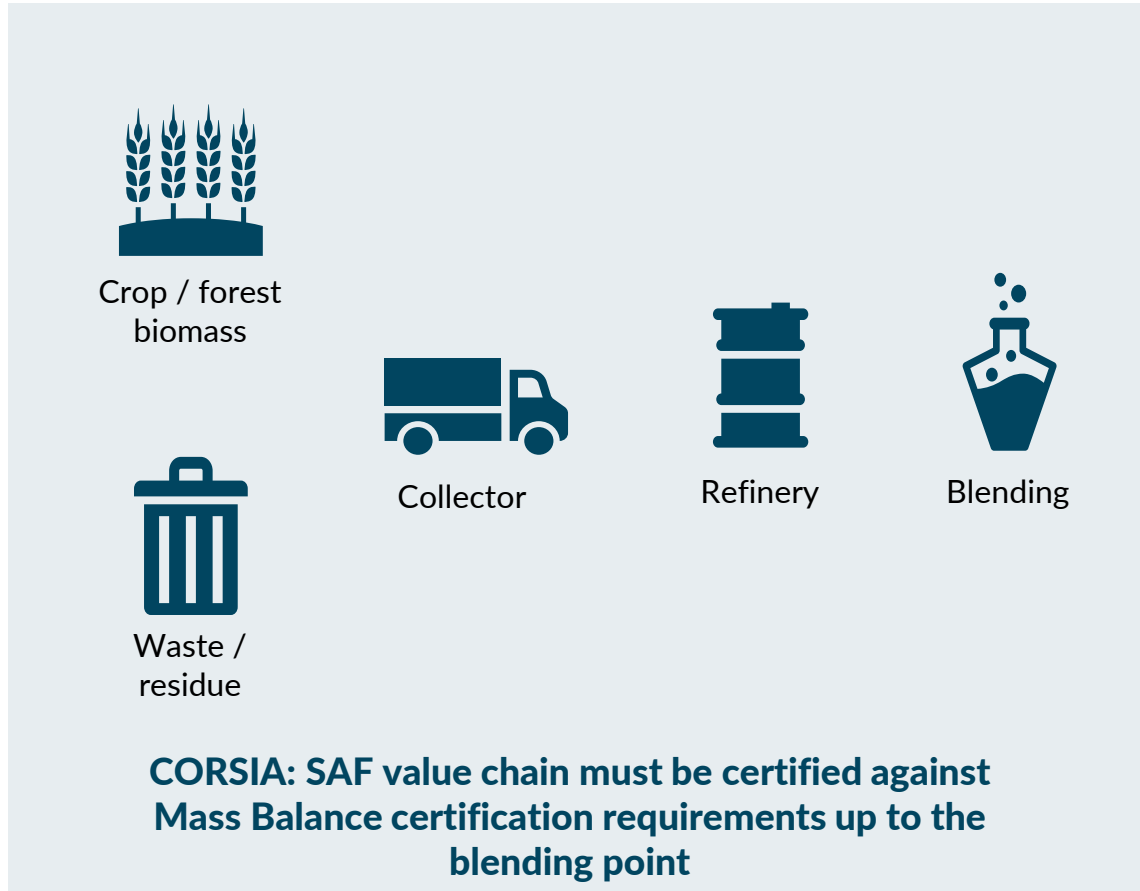
Chain of custody models ranked according to the physical presence of specified characteristics

Source: ISO/DIS 22095:2019(E): *Chain of Custody – General terminology and models*



Chain of custody

Traceability from blending point



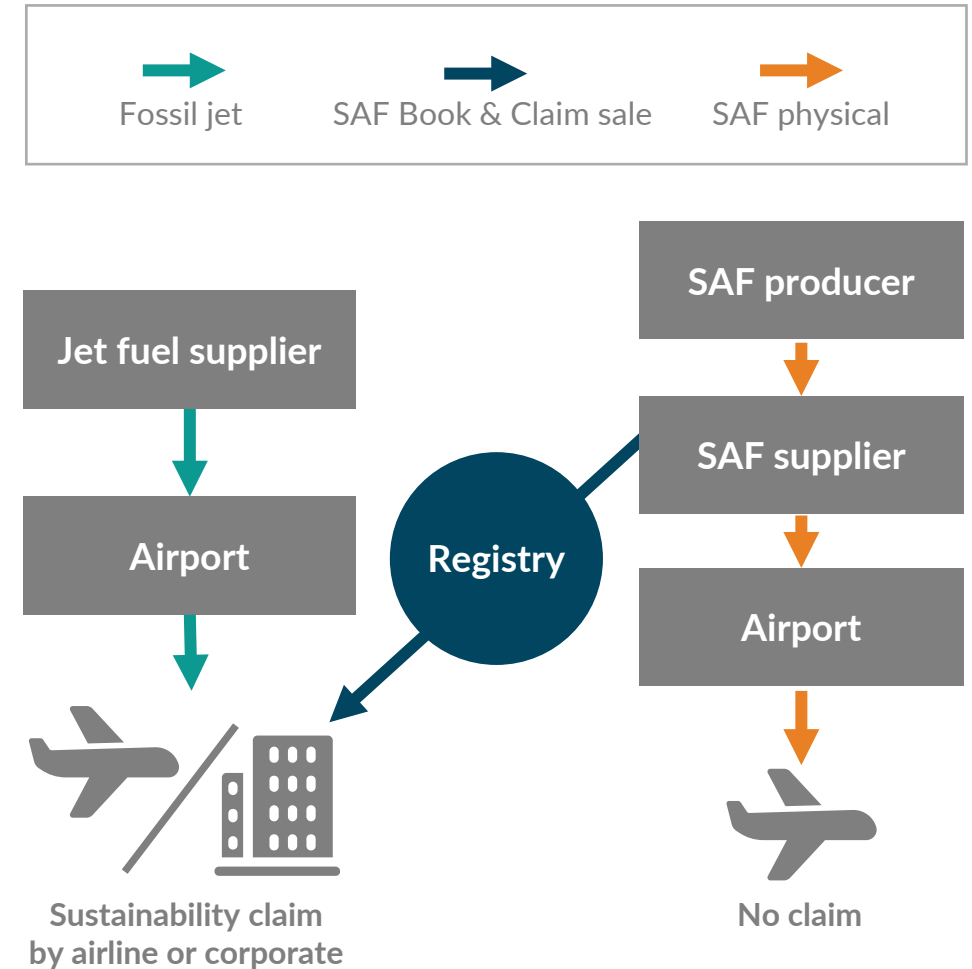
Book & Claim Value proposition

Challenge

- Need to scale SAF uptake to accelerate aviation decarbonisation
- Access limited to carriers in a few hubs with limit on offtake levels
- Cost + emissions of transporting SAF to customers

Opportunity

- Allows SAF purchase without physical connection to the supply site
- Enables the attribution of environmental benefits (i.e., GHG emission reductions) to corporate partners to reduce scope 3 emissions
- No matter where it is purchased, net environmental effect is the same
- RSB provides assurance that transactions are credible, traceable and don't lead to double counting



Book & Claim
Key partners

Programme development partners



A joint initiative of:



Pilot partners



5 more pilots in design / launch stage
(3 aviation + 2 shipping)

5/10 in waiting list



Book & Claim Development journey

2021

- RSB's Book & Claim manual updated from V1 to V2
- Targeted stakeholder consultations
- Development of RSB registry ecosystem and logic
- Engagement with WEF Clean Skies for tomorrow
- Partnership with SABA (RMI/EDF)
- Pilot with Airbp / United / Microsoft
- Launch at the RSB Conference
- Launch of stakeholder consultation
- Review of RTFO incentive compatibility

2022

- Review stakeholder input from:
 - Broad stakeholder consultation (concluded)
 - RSB member webinar (9th March)
 - WEF CST accounting workshop (22nd March)
- Alignment with SBTi + GHG Protocol
- More pilots in aviation and shipping
- LCFS, HBE, ETS review
- Upgrade RSB registry
- Launch SABA Registry + develop methodology to recognise registries
- RSB's Book & Claim manual updated from V2 to V3

2023

- Recognition of RSB's Book & Claim certification under ICAO CORSIA
 - from blending onwards
- Promotion under EU's legislative tool, *Fit for 55*

Book & Claim Role of the RSB

1. **Develop and maintain a robust procedure** (i.e. *RSB's Book & Claim manual*) that is founded on credible sustainability principles and is widely supported by stakeholders – including industry, policymakers and environmental organisations.
2. **Convening platform for stakeholders** to discuss and agree on Book & Claim rules (e.g. double counting).
3. **Certification scheme** to ensure Book & Claim transactions are auditable and based on the robust RSB Standard.
4. **Promote recognition** with market and regulators (i.e., national regulators, CORSIA) and alignment with relevant frameworks (i.e., GHG Protocol, SBTi).
5. **Maintain RSB's Book & Claim registry** and support the development, recognition and governance of a global registry or registries.

Thank you!

Elena Schmidt
elena.schmidt@rsb.org

www.rsb.org
[@RSB_org](https://twitter.com/RSB_org)