
Update on recent WHO initiatives on border health in the WHO European and Eastern Mediterranean Region

Country Health Emergency Preparedness and IHR Programme
Health Emergencies Programme,
WHO Regional Office for the Eastern Mediterranean and Europe

Bahrain, 14- 15 February 2023



European Region

Content

WHO EURO/EMRO support to Member States

1. All- Hazard emergency preparedness capacities in countries assessed and reported
2. Capacities for emergency preparedness strengthened in all countries
3. Upcoming activities for 2023

All- Hazard emergency preparedness capacities in countries assessed and reported

WHO EURO support to Points of Entry assessments and reporting

Regional Activities

- Regional webinars and support to IHRNFPs on submission of annual SPAR report
- Support ongoing to JEE processes (JEE completed in UZB, planned JEEs in 2023: AZE, KGZ, EST)
- Support to country Intra/After Action Reviews
- PoE simulation exercises

Country example: Kyrgyzstan

- Assessment of IHR core capacities at 3 airports and 5 ground crossings
- TTX and full-scale operational SimEx exercises at Manas International Airport.
- Trainings on notification and establishment of two-way communication between PoEs and the national surveillance system.

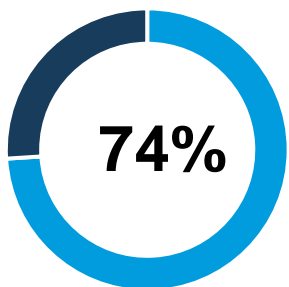


European Region

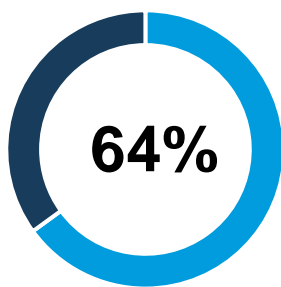


State Party self-assessment Annual Reporting (SPAR) WHO EURO 2021

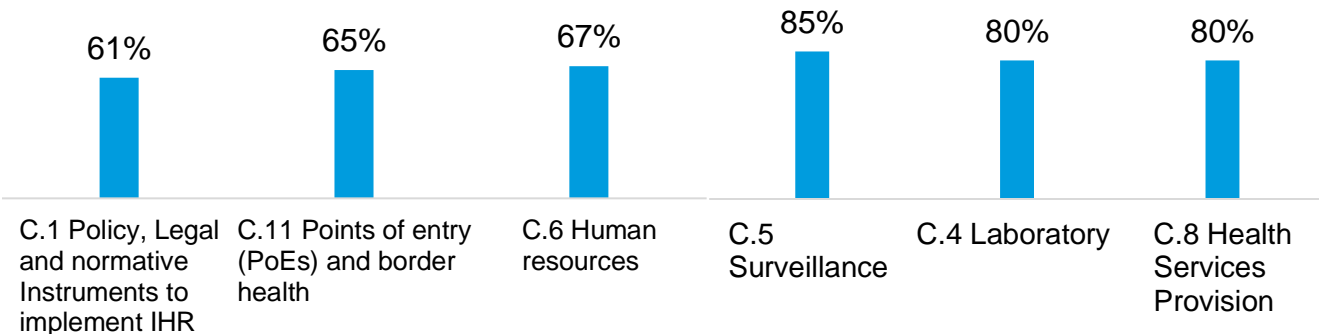
All capacities
EURO average 2021



All capacities
Global average 2021

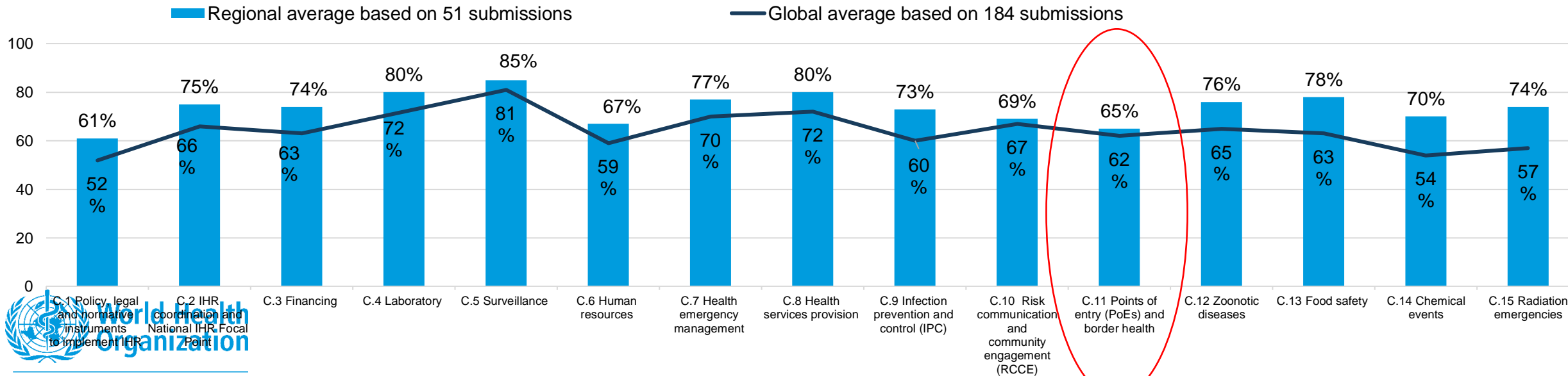


Main challenges reported



Main strengths reported

IHR Core capacity average reported in 2021



WHO EURO SPAR 2021 - Points of Entry and Border Health

210 

Number of designated airports reported

214 

Designated ground crossings reported

457

PoEs reported to have a programme for vector surveillance and control

527

PoEs reported to have a public health emergency contingency plan

231 

Designated Ports in the WHO EURO Region. Reported Airports (210) and Ground Crossings (214)

37 

States Parties reported authorized ports to issue ship sanitation certificates (SSC)



extranet.who.int

<https://www.who.int/publications/i/item/9789240040120>

Capacities for emergency preparedness strengthened in all countries

Key regional IHR capacity building activities

1. National IHR Focal Point Training, 22-24 June 2022, Istanbul Turkey

- Participating countries: AZE, EST, KAZ, KGZ, TAJ, TUR, TKM, UZB
- NFP Function, Risk Assessment, IHRMEF, NFP Communication

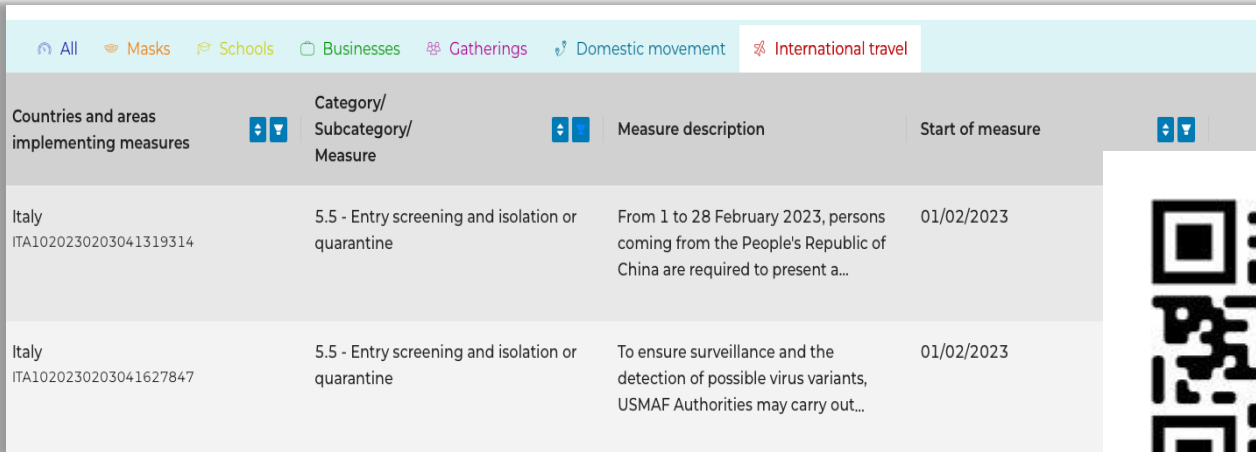
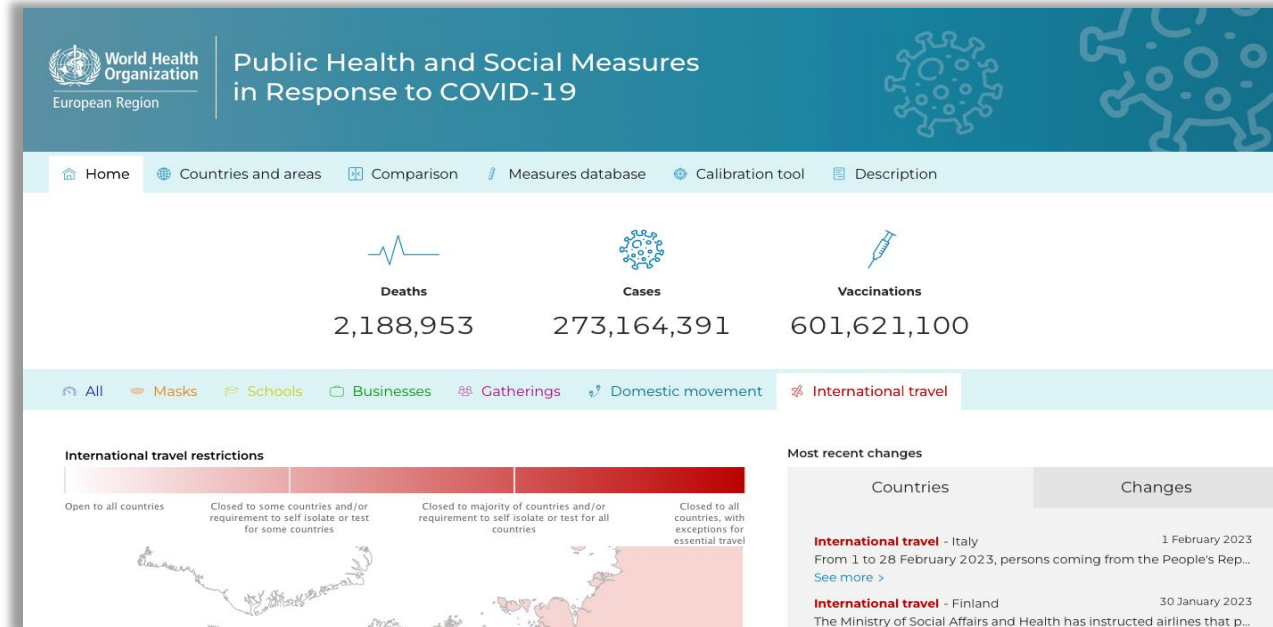
2. Joint Assessment and Detection of Event (JADE) Functional Exercises, September 2022

- All 55 WHO EURO IHR State Parties invited to participate
- Annual regional functional simulation exercise involving a disease outbreak and its consequences requiring multisectoral coordination.
- The exercise is designed to practice/test NFPs' assessment of public health events and communication between Member States and the WHO Regional Contact Point.



Public Health and Social Measures EURO Database and Dashboard

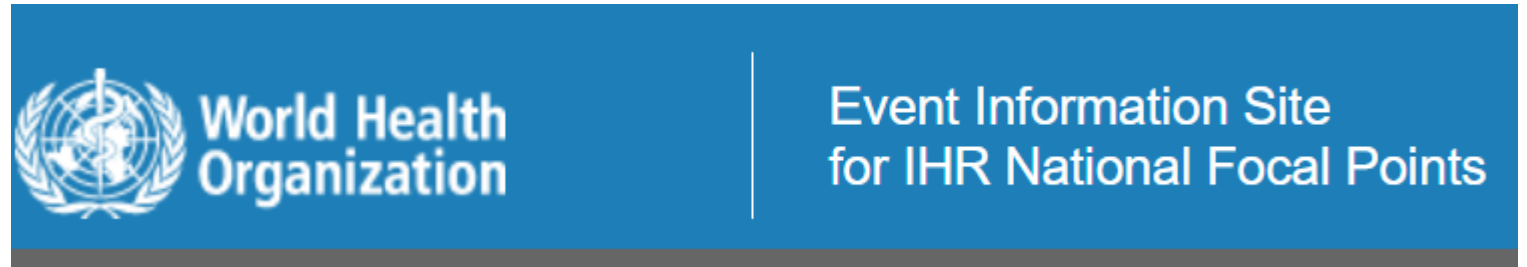
- Comprehensive database of PHSM responses of **all 53 Member States in the WHO European Region**
- As of 9 February 2023, **31 974** individual entries categorized according to the *WHO Glossary of COVID-19 PHSM*, and **4960** measures on travel and trade restrictions.
- International Travel measures are shared biweekly with NFPs via **WHO restricted platform** (*Event Information Site, EIS*)



Countries and areas implementing measures	Category/Subcategory/Measure	Measure description	Start of measure
Italy ITA1020230203041319314	5.5 - Entry screening and isolation or quarantine	From 1 to 28 February 2023, persons coming from the People's Republic of China are required to present a...	01/02/2023
Italy ITA1020230203041627847	5.5 - Entry screening and isolation or quarantine	To ensure surveillance and the detection of possible virus variants, USMAF Authorities may carry out...	01/02/2023



Monitoring and reporting of International travel measures



Region of Europe (EURO): 4829 measures in total since 6 February 2020, of which 21 measures are new.

9 February 2023
This page contains the cumulative information for this region mainly for the period 2022. Measures from the last quarter of 2021 may be included in this file. To access the situation of the 6 regions, please refer to table 1 of this EIS announcement.
In red, additional States Parties that have adopted additional health measures significantly interfering with international traffic and States Parties that have extended/updated measures previously reported as of 9/2/2023
All hyperlinks presented in the table were accessed on 9/2/2023

Albania	If traveling to the Republic of Albania, whether by land, sea or air, you must be equipped with: -Vaccination passport, which is valid 14 days after the second dose of vaccine has been administered; OR -PCR test performed up to 72 hours before entry; OR -Rapid antigen test performed within 48 hours before entry; OR -Valid document proving that you have passed or recovered from Covid-19 up to 6 months after recovery. These criteria also applies to those travelers who transit through Albania; Children up to the age of 6 are exempt from these criteria; Albanian citizens residing in Albania, who return and do not have a document mentioned above, must be isolated for 5 days and inform the health authorities to perform a test at the end of isolation.	01/04/2022		GOV website
Albania	For travelling to Albania, whether by land, sea or air, there are no specific documents required, in terms of Covid-19.	01/05/2022		GOV website
Andorra (update 28)	The vaccination certificates of people who have only received two doses will expire 9 months after the last administration or having passed the disease. If the third dose is inoculated, a new compatible certificate will be provided.	01/02/2022		GOV website GOV website
	people who apply for an involves a stay in the al to thirty consecutive have passed the disease or D-19-. The measure is of the pandemic, in	19/05/2022		GOV website

Country Analysis: Daily Cases and Deaths over Severity of Public Health and Social Measures (PHSM)
Last updated on 26-04-2021

INTERNATIONAL HEALTH REGULATIONS (2005) THIRD EDITION
World Health Organization

- **42 WHO EURO State Parties** have reported additional health measures at least once to WHO.
- As of 13 February 2023, **29 countries implement policies** on international travel measures in response to COVID-19, comprising entry bans, test requirements, proof of vaccination or recovery and quarantine, among others.
- **25 of these countries have announced** specific measures in response to the surge of COVID-19 in China.

Requiring COVID-19 tests

17

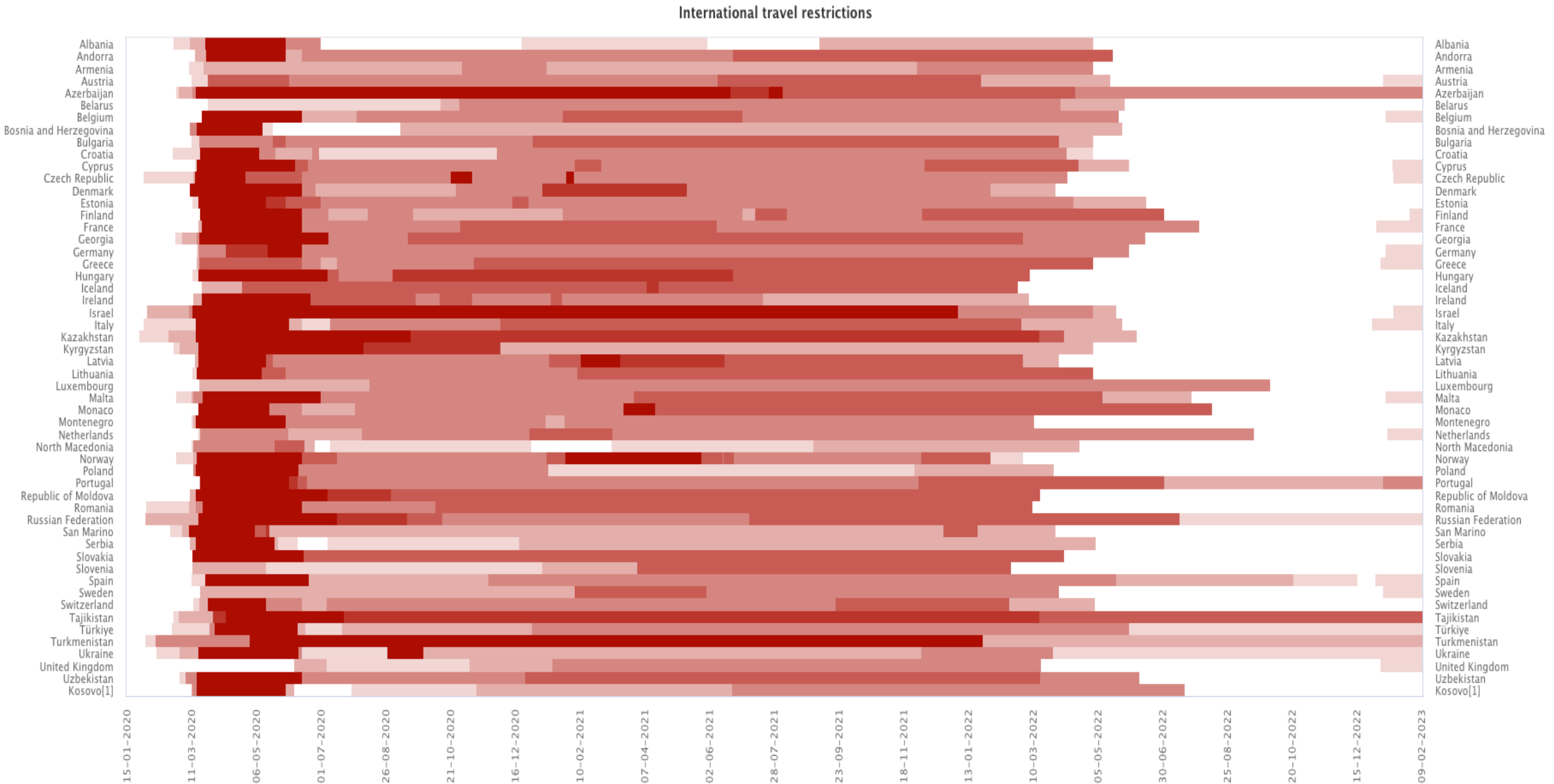
Mandatory wearing of masks on flights

4

General recommendations for mask use, hygiene measures and vaccination

17

Progression of International travel measures over time (as of 9 February 2023)



Country support on implementation of international travel policies



Operational framework for international travel-related public health measures in the context of COVID-19

- Publication of the Operational framework for international travel-related public health measures in the context of COVID-19 based on regional consultations
- Online Calibration tool to support decision making on PHSM during COVID-19
- 3 public health checklists for controlling the spread of COVID-19 in aviation , ground crossings and at sea ports and inland ports



WHO public health checklist controlling the spread of COVID-19 at ground crossings



WHO public health checklist for controlling the spread of COVID-19 in aviation



WHO public health checklist for controlling the spread of COVID-19 in ships, sea ports and inland ports

WHO bi-regional training on inspection of ships and issuance of ship sanitation certificates: train-the-trainers programme



- Establishing a regional roster of experts to cascade support national trainings on SSC
- Based on the train-the trainers programme experts will be deployed to national meetings in the region



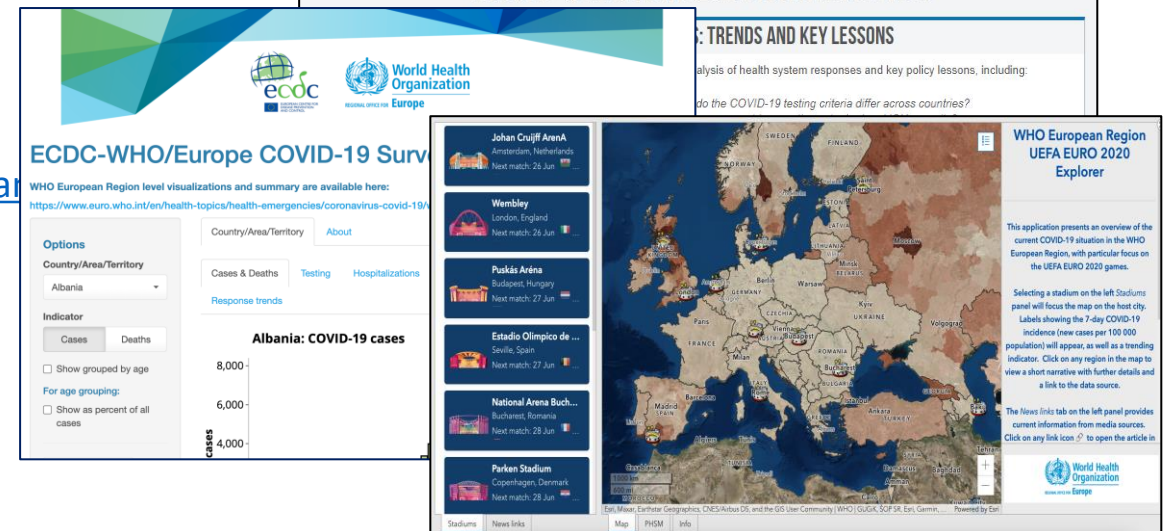
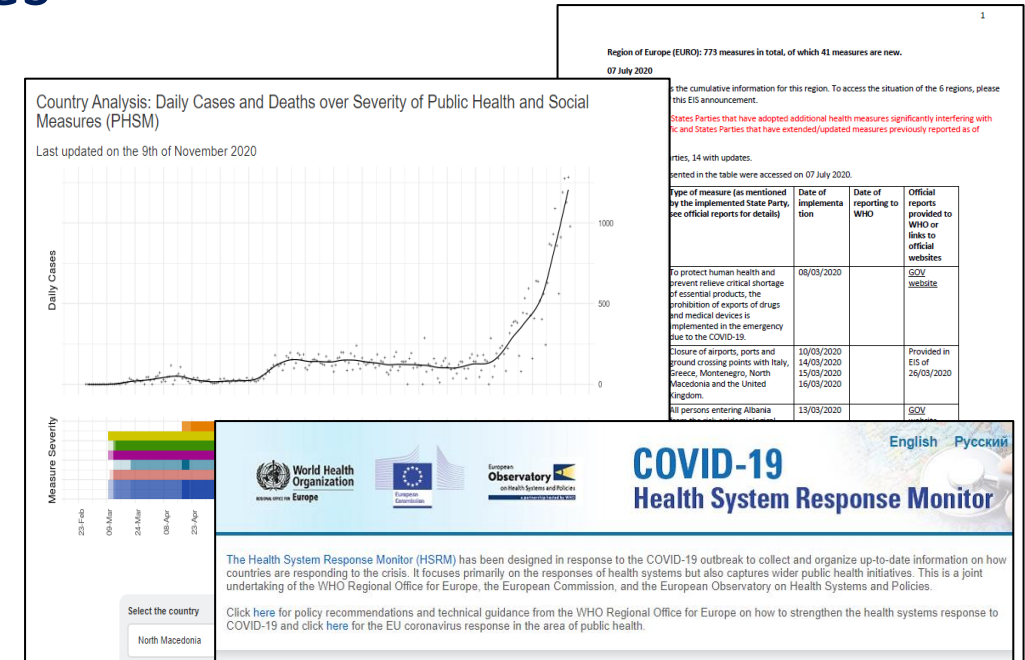
Publications and Support to Member States

PHSM database is used to inform country support, policy dialogues, cross country comparisons, and regional analyses:

- [Calibrating COVID-19 Public Health and Social Measures](#) based on transmission level and response capacity
- Regional and global [Guidance development](#)
- [WHO European Region Strategy considerations for autumn & winter 2022/23](#)
- WHO European Region [Operational updates](#)
- Travel-related data disseminated to **National IHR Focal Points** and WHO Country Offices on a weekly basis
- Data submitted to **IHR Emergency Committee**
- [Operational framework for international travel-related public health measures in the context of COVID-19](#)
- [EURO COVID-19 online dashboard](#) “PHSM” tab
- [Health System Response Monitor](#) website
- Data used in **COVID-19 Intra-Action Reviews**
- [Joint ECDC-WHO Regional Office for Europe Weekly COVID-19 Surveillance Bulletin](#)
- [WHO European Region UEFA EURO 2020 Explorer](#)



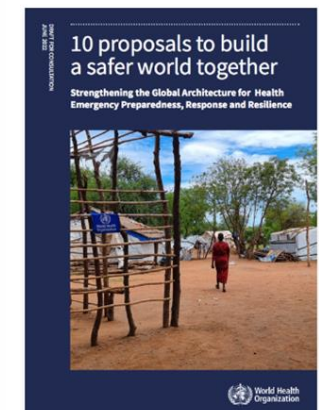
European Region



Upcoming activities for 2023

Upcoming activities in 2023

- Sub-regional training on PoE assessment to be held in Kazakhstan- May 2023
- Subregional training on cross- border collaboration in Balkan countries- June 2023
- IHR NFP training
- JADE regional functional exercises- November 2023
- Preparedness 2.0 – **Development of a new European Strategy and Action plan (2024–2029)**



Thank you!

For further questions on WHO EURO activities please contact

Tanja Schmidt

Tanja Schmidt
COVID-19 IMST PHSM Function Lead
Technical Officer, Capacity Assessment, Monitoring & Evaluation
Country Health Emergency Preparedness & IHR
WHO Health Emergencies Programme
WHO Regional Office for Europe
UN City, Marmorvej 51, 2100 Copenhagen Ø, Denmark

E-mail: schmidt@who.int
Web: <http://www.euro.who.int/en/health-topics/health-emergencies>



European Region

A map of the Eastern Mediterranean Region, showing countries in yellow and bodies of water in light blue. A compass rose is in the top left. Two inset maps show Lebanon and Palestine, and Bahrain and Qatar. The title 'Overview of PoE & Border Health Initiatives in EMR' is centered in large orange text.

Overview of PoE & Border Health Initiatives in EMR

Part 2

Status (%) of PoE Core Capacities

IHR Designated PoEs in EMRO

- PoE represent categorically amongst the weakest reported IHR capacities, both globally & Regionally
- JEE Assessments done in 19/21 EMRO Member States (2016-19)
 - PoE.1 (Routine Capacities) Average = 3
 - PoE.2 (Emergency Capacities) Average = 2.5
- SPAR 2021 Data submitted for 21 EMR Countries
 - C.11.1 (Routine Capacities) Average = 66%
 - C.11.2 (Emergency Capacities) Average = 61%
 - C11 (Overall Capacity) = 63%

IHR designated points of entry

- 100 Ports
- 96 Airports
- 75 Ground crossings
- 17 Number of States Parties reporting authorized ports to issue ship sanitation certificates (SSC)

How do We Assess these Capacities?

International Health Regulations (2005)

Assessment tool for core capacity requirements at designated airports, ports and ground crossings

October 2009

WHO Core Capacity Assessment & Mapping Tool - Operationalized Annex 1B into assessment areas at the Points of Entry

Name of POE: _____

Reporting Officer/Manager: _____

Reporting Country: _____

Type: ☐ Airport ☐ Seaport ☐ Land Crossing

WHSY Form: _____

Category	Assessment
Commercial	
Passenger	
Cargo	

Section/Assessment Area	Assessment
Immigration	
Customs	
Security	
Public Health (Quarantine)	
Animal Health (Quarantine)	
Other (Specify)	

Contact Information

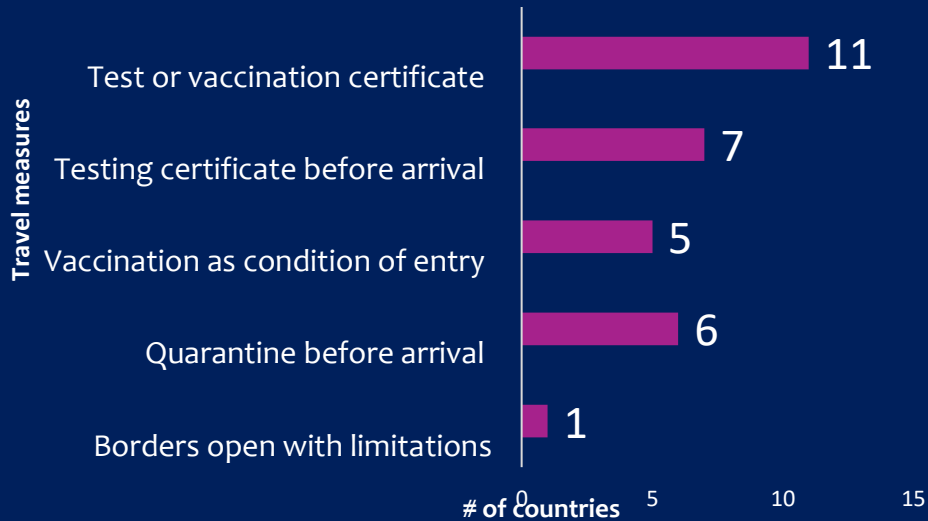
Name	Job Title/Function	Email	Phone

WHO have produced a “Core Capacity Assessment Tool”, can be used for self-submission under SPAR

Operationalized Annex 1B into assessment areas at the Points of Entry

EMRO Adapted the Tool for fragile settings to assess the capacities

Monitoring of Travel Measures



- IHR Article #43 – inform WHO of additional health measures & public health rationale within 48 hours of implementation
- Significant disruptions throughout the Pandemic and lack of coordination and communication – measures provided with no justification
- Decisions often political & economic in nature, outside of health's domain
- EMR PoE Travel Measures Dashboard
 - Captures select travel measures regarding quarantine, screening, testing, tracing of travelers, etc.
 - Represents country specific data entered/validated by national counterparts –weekly snapshots
 - Available to EMR counterparts in real time
- Media monitoring of travel measures against Cholera, mpox

COVID-19 Travel Measures Bulletin

TESTING

QUARANTINE

VACCINES

RESTRICTING ENTRY

(7/22 Countries)

Period of validity for the PCR to be conducted before arrival which ranges from:

96 hours (1): Afghanistan

72 hours (6): Djibouti, Iran, Iraq, Pakistan, Palestine*, Somalia

*No commercial flights

No PCR (15): Bahrain, Egypt, Jordan, Kuwait, Lebanon, Libya, Morocco, Oman, Qatar, Saudi Arabia, Sudan, Syria, Tunisia, United Arab Emirates, Yemen

Testing on Arrival

PCR (3): Djibouti, Iran, Palestine.

(6/22 Countries)

Mandatory Quarantine: 6 (27%) of EMR countries for arriving passengers, some contingent upon destination

Home Quarantine (2): Pakistan, Palestine

Institutional Quarantine (2): Somalia, Sudan

Mixed Method Quarantine (2): Djibouti, Iran

No Quarantine (16): Afghanistan, Bahrain, Egypt, Iraq, Jordan, Kuwait, Lebanon, Libya, Morocco, Oman, Qatar, Saudi Arabia, Syria, Tunisia, United Arab Emirates, Yemen



(11/22 Countries)

A certificate of vaccination has offered arriving passengers:

• **Exemption from mandatory testing (10):** Djibouti, Iran, Libya, Oman, Pakistan, Palestine, Saudi Arabia, Somalia, Tunisia, United Arab Emirates.

• **Exemption from mandatory quarantine (7):** Libya, Oman, Palestine, Qatar, Saudi Arabia, Tunisia, United Arab Emirates

Vaccination required for entry (5): Djibouti, Iran, Libya, Pakistan, Palestine.

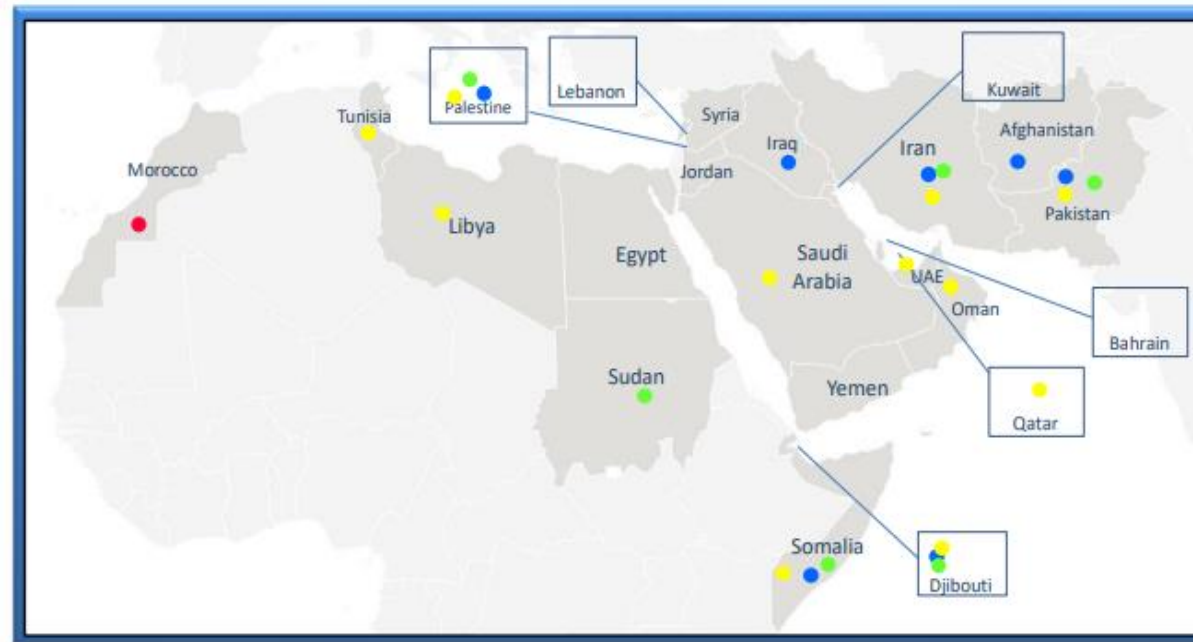
Immunity certificate honored (2): Palestine, Qatar

Booster Required (4): Djibouti, Libya, Pakistan, Palestine

(1/22 Countries)

1 country is restricting entry from specific countries

Morocco (1)	China
-------------	-------



- PCR testing conducted in advance required for entry
- Implementing Vaccine Exemptions
- Imposing Entry Restrictions
- Quarantine (Home/Institutional) implemented for arriving passengers

Disclaimer:

The information presented within has been collected via an online interactive platform where country IHR NFPs can access and either enter national data or respond to WHO-led queries concerning weekly travel measures by confirming or rectifying - information which has not been reviewed nor confirmed is presented as non-validated. WHO EMRO is therefore not responsible for the veracity of information provided by external national parties.



Strategic Support to Points of Entry

- Developed PoE, Safe Transportation & Border Health Strategy for EMR
- WHO Policy Briefs & Travel Advice (COVID, Cholera, mpox)
- Issuance & translation of guidance for PoE & travel-related considerations
- Case Studies for PoE Lessons Learned & Legacy
- EMR Expert Roster for PoE Professionalism
- PoE Stakeholder Coordination: IOM/IMO/ICAO & IATA
- Regional PoE Working Groups & Collaborations
- EMR Regional Expert Group
- PoE Stakeholder Mapping across EMR
- Regional PoE prioritization
- PoE Exchange programme
- Facilitating cross-border collaboration

Operational Support to PoEs in EMR

- Assessment Missions, Physical & Virtual (AFG, PAK, OMAN, SUD, YEMEN)
- Country-level PoE Coordination & Partners
 - IOM/CDC/PHE/EMPHNET/NGOs
- RCCE Package for COVID-19 at PoE (staff, travelers & community) to be expanded for priority hazards at PoEs
- Advocacy & regional webinar for risk-based approach travel measures
- Regional, sub-regional and national trainings
 - SSC, PoE Assessment, PHECP, Risk assessment, Surveillance
- Country-Specific Technical Assistance & Portfolios
 - HR Mapping for PoE
 - Curriculum Development
 - Digital applications for travel measures
 - PoE Surveillance
 - Contingency Planning (i.e EVD, Cholera, mpox, COVID-19)
 - Assessments & Trainings
 - Risk Communication for travel & trade (i.e Qatar/FIFA World Cup2022)
 - Develop ToRs for establishing PoE competent authority

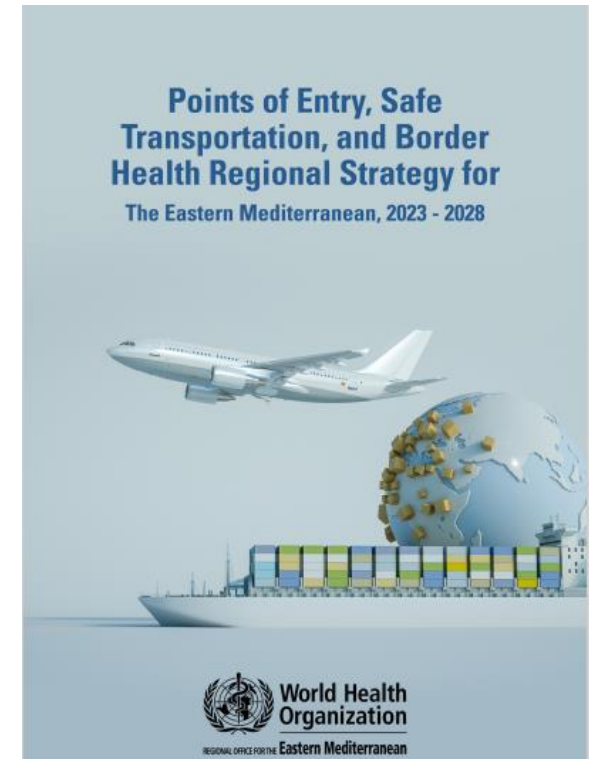


When travelling, plan ahead and check national advice on COVID-19 testing and traveler requirements.



PoE Regional Strategy

- **Vision:** to promote the implementation of integral capacities outlined within the Annex 1B of IHR in order to prevent, detect, and respond to all hazard public health threats which may present at a Point of Entry, as well as throughout travel
- **Strategic areas:**
 - Fostering **enabling environment** and ensure **multi-sectoral coordination** to promote preparedness and response to all hazard at PoE premises
 - Fostering **collaboration across borders** enhance an efficient preparedness and response to common health threats
 - Bolstering **Operations** for Effective Preparedness & Response and **Surveillance and Response** to ensure IHR Annex 1B requirements are upheld for both routine and emergency capacities
 - Encouraging agile **M&E** of PoE activities by performing habitual exercises and drills and capacity assessments
 - Harnessing **Regional PoE Network** for experience exchange and to harmonizes collective efforts for a unified approach to common issues



PoE Training Package

- **3 packages:** intro, intermediate, advanced, 19 modules
- Material intended for direct training, augmenting national professional programs
- Intended for Health & non-Health staff
- Under publication in OpenWHO
- Country experience included to operationalize & conceptualize the trainings
- Quizzes & Discussions

#	Training Module
Course 1: Introductory training; basic of IHR at PoE	
1	Module 1: Training package introduction
2	Module 2: Introduction to IHR at PoE
3	Module 3: Core capacities and designated PoEs
4	Module 4: PoE Assessment
5	Module 5: Key public health risks
Course 2: Intermediate Training	
1	Module 1: Surveillance
2	Module 2: Cross border collaboration
3	Module 3: Vector surveillance & control
4	Module 4: Emergency planning at PoE
5	Module 5: Public health event management at PoE
6	Module 6: Risk Assessment
7	Module 7: Risk communication and community engagement
Course 3: Advanced/specialized PoE training	
1	Module 1: Environmental health at PoE <ul style="list-style-type: none"> • Module 1a: Sanitation & Hygiene at PoE • Module 1b: Food & Water Safety at PoE
2	Module 2: Basics of ship inspection & sanitation
3	Module 3: Aircraft inspection
4	Module 4: Cargo, Container & Goods Inspection <ul style="list-style-type: none"> • Module 4: Cargo inspection • Module 4b: Food Inspection at PoE • Module 4c: Animal Movement Management & Quarantine
5	Module 5: Chemical & Radiological Events Management at PoE <ul style="list-style-type: none"> • Module 5a: Chemical events • Module 5b: Radiological events

Cross-border collaboration

- Operational considerations for cross-border collaboration
- EMR Countries & Neighbors Mapping, stakeholder mapping
- Establishment of technical working groups – bilateral dialogue
- Joint Emergency Preparedness and Response Action Plan (JEAP)
 - Collaboration between WHO EMRO, AFRO, Africa CDC
 - Somalia, Sudan, & Ethiopia
- **AFG+PAK:** TWG established, joint assessment and discussion on scope of agreement
- **G5 CBC:** Iran, Pak, AFG, Iraq to improve preparedness and response to mutual mass gatherings and cross-border spread of disease
- **Sudan Khartoum Declaration:** Bi-Regional EMRO/AFRO – Nov 2018 Chad, Egypt, Ethiopia, Libya, South Sudan and Sudan to improve preparedness & response to public health threats under IHR (2005)
- **GCC Framework:**
 - Joint PoE Assessment according to IHR core capacity requirements
 - Joint training need assessment, courses & training for PoE professionalism
 - Joint Gulf plan essential in strengthening measures to respond to COVID-19 pandemic at PoEs
 - Joint planning & guidance development

Challenges & lessons learned

- Capacities varying in infrastructure, resources, and passenger volumes, from established facilities with various sectors present, to porous borders where travelers may cross quotidianly and sporadically
- Limited compliance to IHR & inconsistency travel measures
- Insufficient coordination among sectors
- Availability of PHECP, plans & SoPs not coordinated, not exercised with relevant sectors
- Limited trained HR & resources
- Electronic systems implemented/harmonized & generation of real time data for passengers or ill passengers



Way forward

- 1 Dissemination & implementation of PoE Regional Strategy
- 2 Fundamental Focus on PoE Building Blocks for technical support
- 3 Galvanizing COVID lessons and political will for Cross Border Collaborations for public health threats of mutual concern – joint surveillance & response
- 4 PoE's role in travel & IHR issues – coordination and synergy of practice
- 5 Diverse expertise needed in PoE technical support – further expansion within Regional roster
- 6 Ensure PoE specific emergency plans are developed, harmonised, disseminated, coordinated, and tested amongst all stakeholders at the PoE
- 7 Designation of PoEs & travel measures based on risk assessment

Thank You

