



International Civil Aviation Organization
ICAO **The Fifth Meeting of the South Asia, Indian Ocean and
Southeast Asia ATM Coordination Group (SAIOSEACG/5)**

Bangkok, Thailand, 13 – 16 January 2026

Agenda Item 3: Review of Current Operations and Problem Areas

APPLICATION OF ATC SEPARATION MINIMUMS

(Presented by the Secretariat)

SUMMARY

This paper presents information on the Seamless Air Navigation Services (ANS) survey conducted to determine which Air Traffic Control (ATC) separation minimums were being applied within the Asia/Pacific (APAC) Region.

1. INTRODUCTION

1.1 In an endeavour to track the effectiveness of the Seamless ANS element implementation related to the use of tactical (ATC surveillance-based and datalink-supported) ATC separation minimums, the ICAO APAC Office issued State Letters since 2017 subsequently supported by **Conclusion ATM/SG 6-1: ATC Separations Standards Survey**, **Conclusion ATM/SG/10-1: Revised Reporting Date for ATM Regional Plans' Implementation Status Monitoring** and **Conclusion ATM/SG/11-2: Revised Annual APAC Regional Survey of ATC Separation Standard**.

1.2 The survey requested respondents to advise the minimum horizontal separation minimums authorized for use by controllers within Category R (remote en-route airspace with Air Traffic Services (ATS) HF or CPDLC communications and outside the coverage of ground-based surveillance coverage), Category T (terminal operations serviced by direct ATS communications and surveillance) and Category S (serviced (or potentially serviced) en-route airspace – by direct (not dependent on a Communication Service Provider (CSP)) ATS communications and surveillance, and the minimum horizontal spacing authorized by ATC Letter of Agreement (LOA) or other instruments on each of your Flight Information Region (FIR) inbound transfer of Control (TOC) points.

1.3 Surveying the TOC points' spacing parameter is a step forward in helping to identify the 'bottleneck' FIR Boundary TOC points in the region. In addition, it was asked whether your Administration applied a Flight Level Allocation Scheme within its FIR(s) [no closer than 50NM to the FIR boundary]. The survey is found under the Seamless ANS Plan, ATM sub-section of the ICAO APAC eDocuments webpage or via <https://www.icao.int/sites/default/files/APAC/Documents/Annual-APAC-Regional-Survey-of-ATC-Separation-Standards.xlsx>.

1.4 The specific parts from the *Asia/Pacific Seamless ANS Plan* being referred to in the survey were:

7.37 *All ATC units should authorise the use of the horizontal separation minima stated in ICAO Doc 4444 (PANS ATM), or as close to the separation minima as practicable, taking into account such factors as:*

a) *the automation of the ATM system, including automated hand-off between sectors;*

- b) *the capability of the ATC communications system; the performance of the ATS surveillance system, including data-sharing or overlapping coverage at TOC points;*
- c) *and ensuring the competency of air traffic controllers to apply the full tactical capability of ATS surveillance systems.*

Note 1: the delivery of ATC services should be based primarily on the CNS/ATM capability. When using Annex 10 compliant ATS surveillance, 5 NM (en-route) or 3 NM (terminal) surveillance-based separations should be authorised within ATC sectors. At the TOC points in such environments, 5-10 NM should be authorised with auto hand-off and surveillance data-sharing or overlapping coverage at the TOC point, and 5-20 NM without auto hand off, as determined by an appropriate safety assessment.

Note 2: the efficacy, continuity and availability of ATM services should be supported by adherence with regional planning and guidance material regarding ATM automation and ATM contingency systems (regarding ATM contingency operations, refer to the Regional ATM Contingency Plan).

7.38 *Priority for FLAS level allocations should be given to higher density ATS routes over lower density ATS routes. FLAS should comply with Annex 2, Appendix 3a unless part of an OTS. FLAS other than OTS should only be utilised for safety and efficiency reasons within:*

- a) *Category R airspace with the agreement of all ANSPs that provide services:*
 - *within the airspace concerned; and*
 - *within adjacent airspace which is affected by the FLAS; or*
- b) *Category S airspace with the agreement of all ANSPs that provide services:*
 - *where crossing track conflicts occur within 50 NM of the FIR boundary; and*
 - *ATS surveillance coverage does not overlap the FIRs concerned, or ATS surveillance data is not exchanged between the ATC units concerned.*

1.5 **DISCLAIMER:** *The presentation of material in this paper does not imply the expression of any opinion whatsoever on the part of ICAO, APANPIRG, the ATM Sub-Group of APANPIRG concerning the legal status of any country, territory, city or area of its authorities, or concerning the delimitation of its frontiers or boundaries.*

2. DISCUSSION

Survey

2.1 The survey questions circulated were expected to provide greater clarity on the separation minimums used in the region. Q1 surveyed Remote, Surveillance and Terminal airspace separations within the airspace of APAC Administrations, Q2 captured the separation minimums for only inbound flights at FIR TOC points and Q3 covered FLAS.

2.2 The latest survey responses from APAC States/Administrations are provided in **Appendix A** and **Appendix B**. The data in **Appendix A** shows the responses from Q1 and Q3 of the survey, the green text indicates compliance with the *Asia/Pacific Seamless ANS Plan*'s expectations, while red text represents non-compliance. Whereas **Appendix B** shows all reported inbound TOC points from Q2 and its compliance to the *Seamless ANS Plan version 3.0*. Information associated with *Seamless ANS Plan version 4.0* will be captured in the forthcoming 2026 survey, for which States/Administrations will be requested to submit responses by the end of February 2026.

2.3 As of 1 August 2025, 18 responses were received compared to 16 from last reporting period. **Table 1** presents the list of submission by States/Administrations from 2018 to 2025. Some States/Administrations did not submit any data since 2017 to date.

Table 1: Responses for ATC Separation Survey, 2018- 2025

State/Administration	2018	2019	2020	2021	2022	2023	2024	2025
Afghanistan	Yes							
Australia	Yes	Yes	Yes	Yes	Yes	Yes	Yes	Yes
Bangladesh					Yes			Yes
Bhutan		Yes						
Brunei Darussalam								
Cambodia	Yes	Yes	Yes		Yes	Yes	Yes	
China		Yes				Yes		
Cook Islands						Yes		
DPR Korea								Yes
Fiji	Yes	Yes			Yes	Yes	Yes	Yes
French Polynesia	Yes	Yes						
Hong Kong, China	Yes	Yes	Yes	Yes	Yes	Yes	Yes	Yes
India	Yes	Yes			Yes	Yes	Yes	Yes
Indonesia	Yes	Yes	Yes		Yes	Yes	Yes	
Japan	Yes	Yes	Yes		Yes	Yes		Yes
Kiribati								
Lao PDR	Yes	Yes					Yes	
Macao, China			Yes	Yes	Yes	Yes		
Malaysia		Yes		Yes	Yes		Yes	Yes
Maldives		Yes		Yes	Yes			
Marshall Islands								
Micronesia								
Mongolia		Yes			Yes	Yes	Yes	
Myanmar		Yes			Yes			
Nauru								
Nepal				Yes	Yes	Yes		Yes
New Caledonia								
New Zealand	Yes	Yes				Yes	Yes	Yes
Pakistan	Yes	Yes		Yes	Yes	Yes	Yes	Yes
Palau								
Papua New Guinea	Yes	Yes	Yes					
Philippines	Yes	Yes	Yes	Yes	Yes	Yes	Yes	Yes
Republic of Korea	Yes	Yes	Yes	Yes	Yes	Yes	Yes	Yes
Samoa								
Singapore	Yes	Yes	Yes	Yes	Yes	Yes	Yes	Yes
Solomon Islands								
Sri Lanka	Yes	Yes	Yes	Yes	Yes	Yes	Yes	Yes
Thailand	Yes	Yes	Yes	Yes	Yes	Yes	Yes	Yes
Timor Leste								
Tonga		Yes						
Tuvalu								

State/Administration	2018	2019	2020	2021	2022	2023	2024	2025
USA	Yes	Yes	Yes	Yes	Yes	Yes	Yes	Yes
Vanuatu								
Viet Nam		Yes	Yes	Yes	Yes	Yes	Yes	Yes

Analysis

2.4 The analysis of Q1 of the survey is presented separately for the three categories of airspaces namely Category R, Category S and Category T in **Figure 1**, **Figure 2** and **Figure 3** respectively. The figures provided an indication, as at 1 August 2025, of the efficiency of ATC spacing between aircraft at the same level as it is theoretically being applied within FIRs and inbound at FIR TOC Points respectively. The criteria used the analysis of Q1 are as follows:

- a) Category R - Acceptable standard: ≤ 50 NM
- b) Category S - Acceptable standard: 5 NM
- c) Category T - Acceptable standard: 5 NM

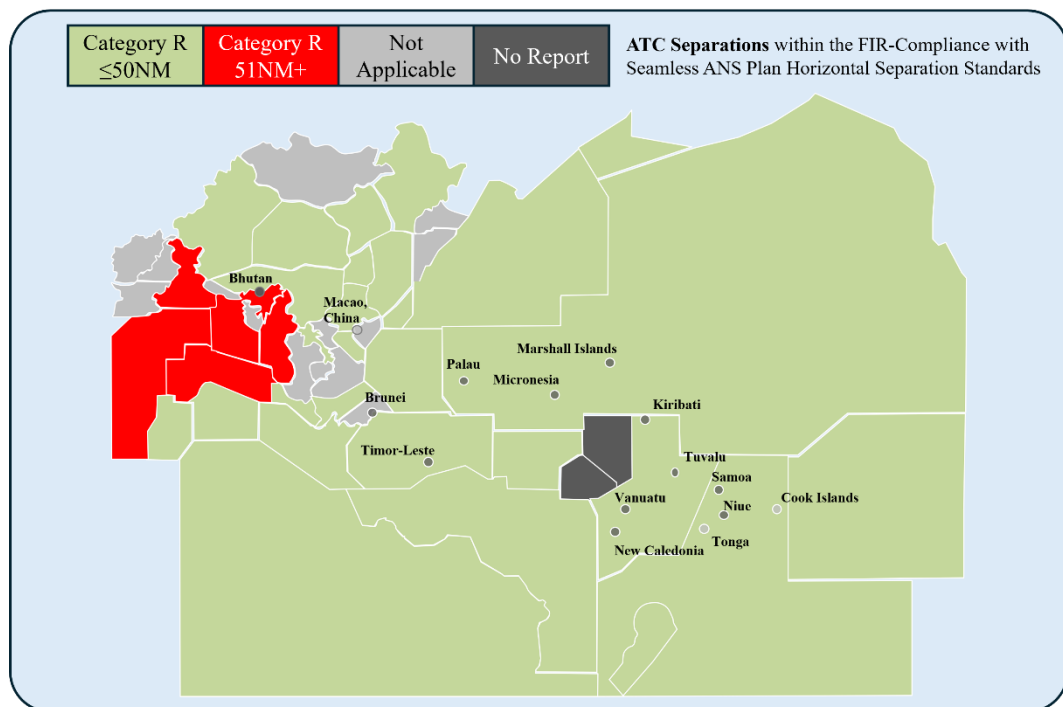


Figure 1: Category R Horizontal Separation Minimums within the FIR

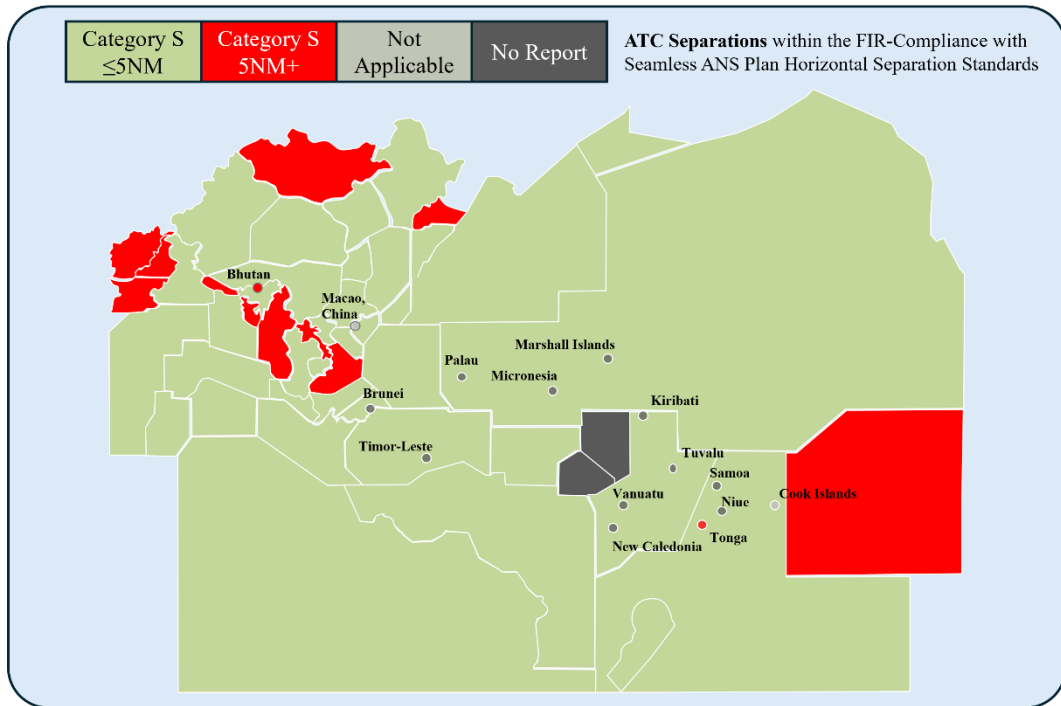


Figure 2: Category S Horizontal Separation Minimums within the FIR

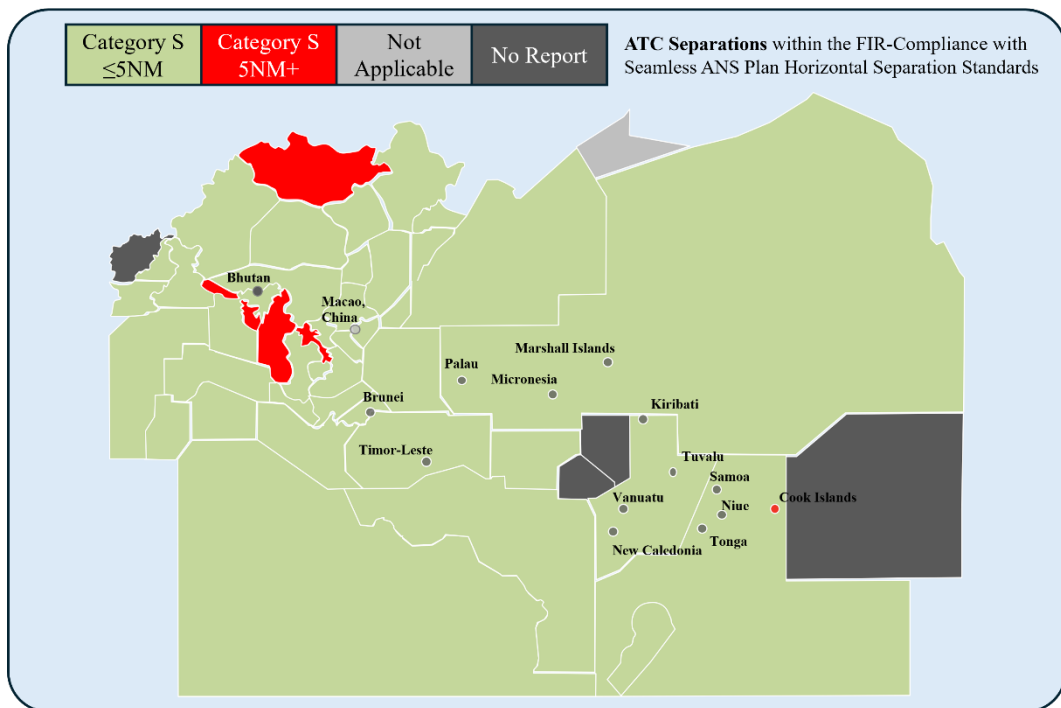


Figure 3: Category T Horizontal Separation Minimums within the FIR

2.5 Q1 requested the minimum horizontal separation standard within State/Administration's FIR namely Category R, Category S and Category T airspace. 27% (12 of 44) of APAC States and Administrations have all categories of airspace within the FIR with minimum separation compliant with the APAC Seamless ANS Plan.

2.6 States that utilized more than 5 NM in Category S airspace:
 Afghanistan, Bangladesh, Bhutan, DPR Korea, French Polynesia, Lao PDR, Mongolia, Myanmar, Nepal, Pakistan, Tonga, and Vietnam.

2.7 States that utilized more than 5 NM in Category T airspace:
 Cook Islands, Lao PDR, Mongolia, Myanmar and Nepal.

2.8 Q2 of the survey looked at three categories of separations at Inbound FIR TOC Points shown below and the total number of TOC points surveyed this year. After a review in 2023, the criteria for Category R→ S TOC has been revised from 10 NM to 50 NM. The analysis of Q2 of the survey is presented separately for the three categories in **Figure 4**, **Figure 5** and **Figure 6** respectively.

Q2 Criteria

- a) Category R/S → R TOC- Acceptable standard: ≤ 50 NM
- b) Category R → S TOC - Acceptable standard: ≤ 50 NM
- c) Category S → S TOC - Acceptable standard: ≤ 10 NM

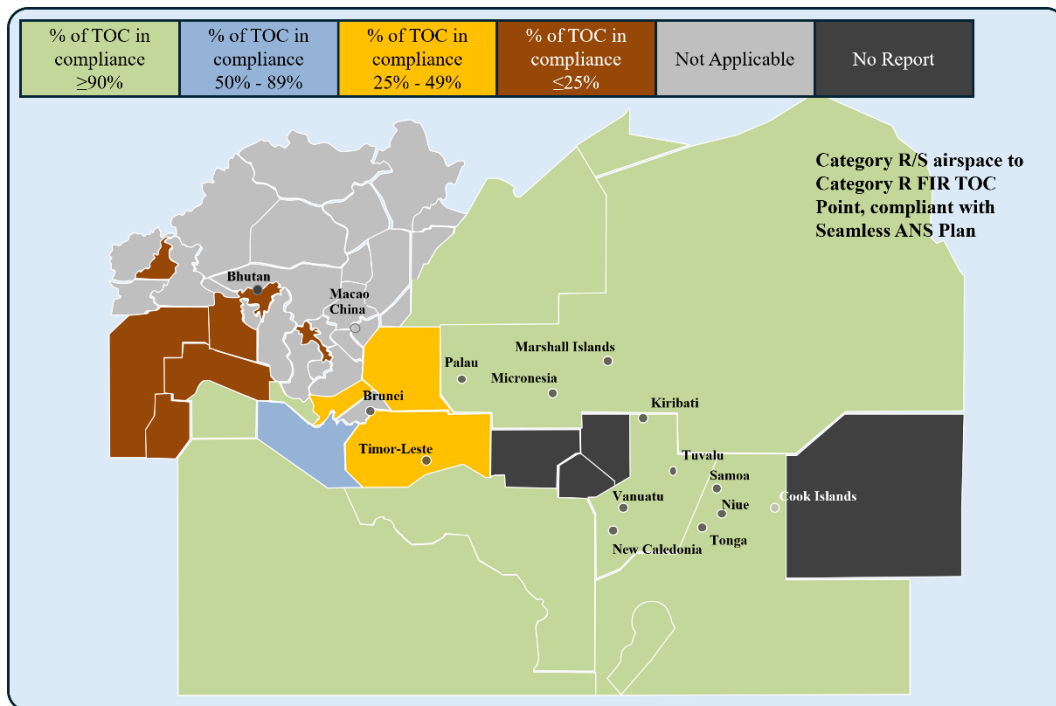


Figure 4: Category R/S → R TOC ATC Horizontal Spacing at Inbound FIR TOC Points

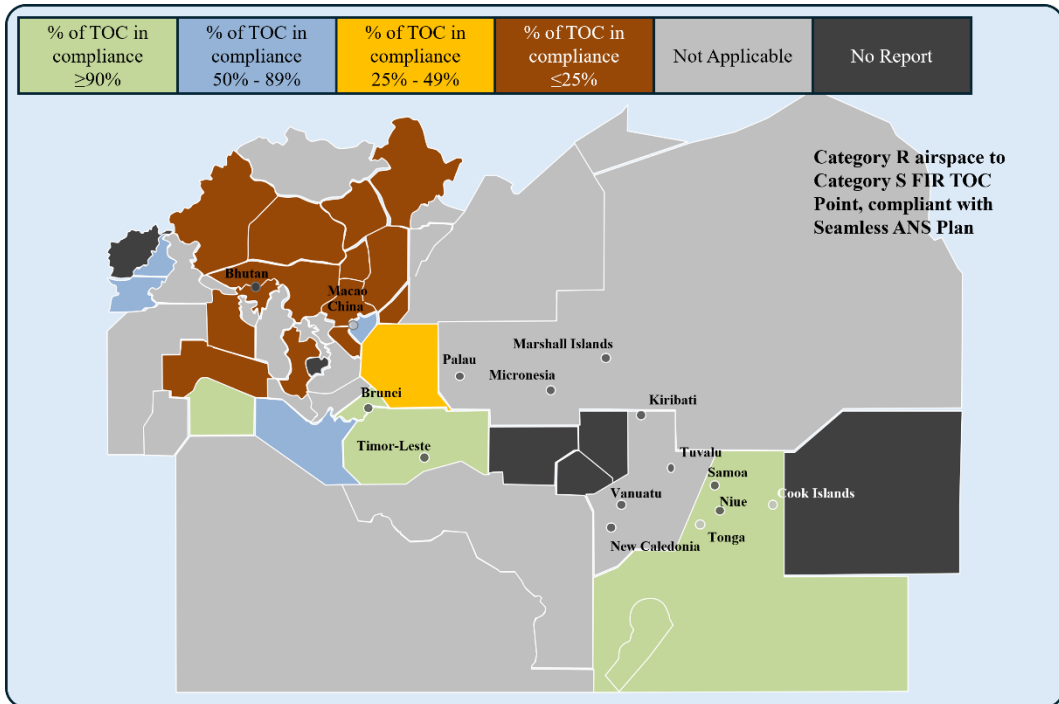


Figure 5: Category R → S TOC ATC Horizontal Spacing at Inbound FIR TOC Points

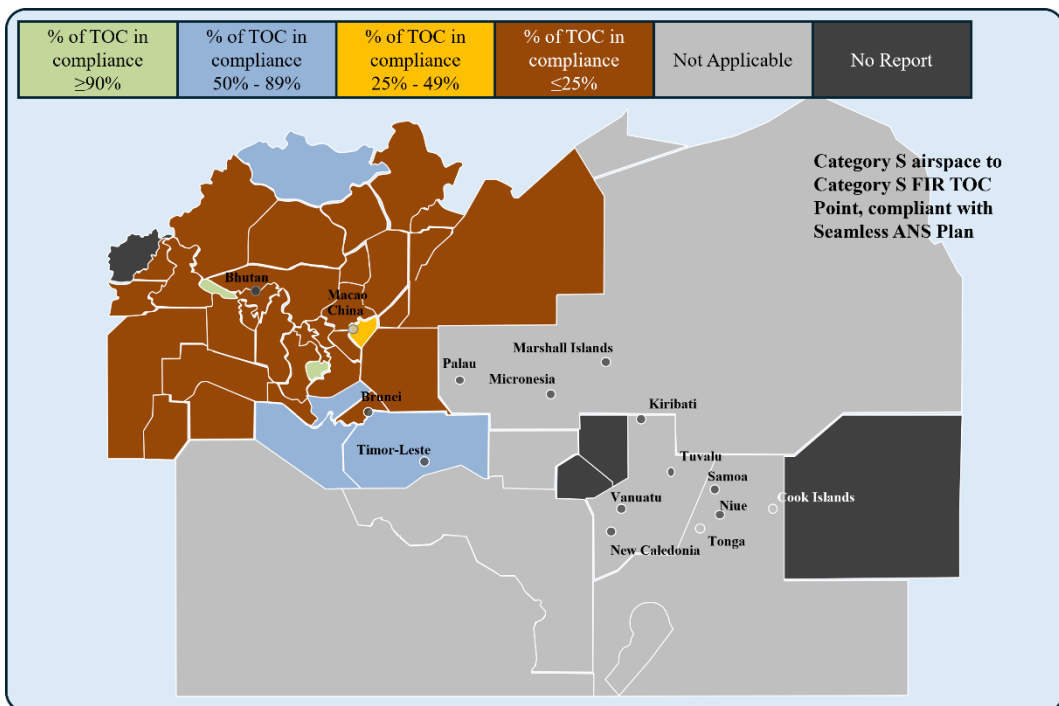


Figure 6: Category S → S TOC ATC Horizontal Spacing at Inbound FIR TOC Points

2.9 Only six States/Administrations achieved more than or equals to 90% of the total Inbound FIR TOC points compliant with the *Asia/Pacific Seamless ANS Plan* for all applicable categories.

Australia, Cambodia, Fiji, Nepal, New Zealand and United States.

2.10 Further analysis of the compliance of the three categories of inbound TOC by States is shown in *Figure 7*.

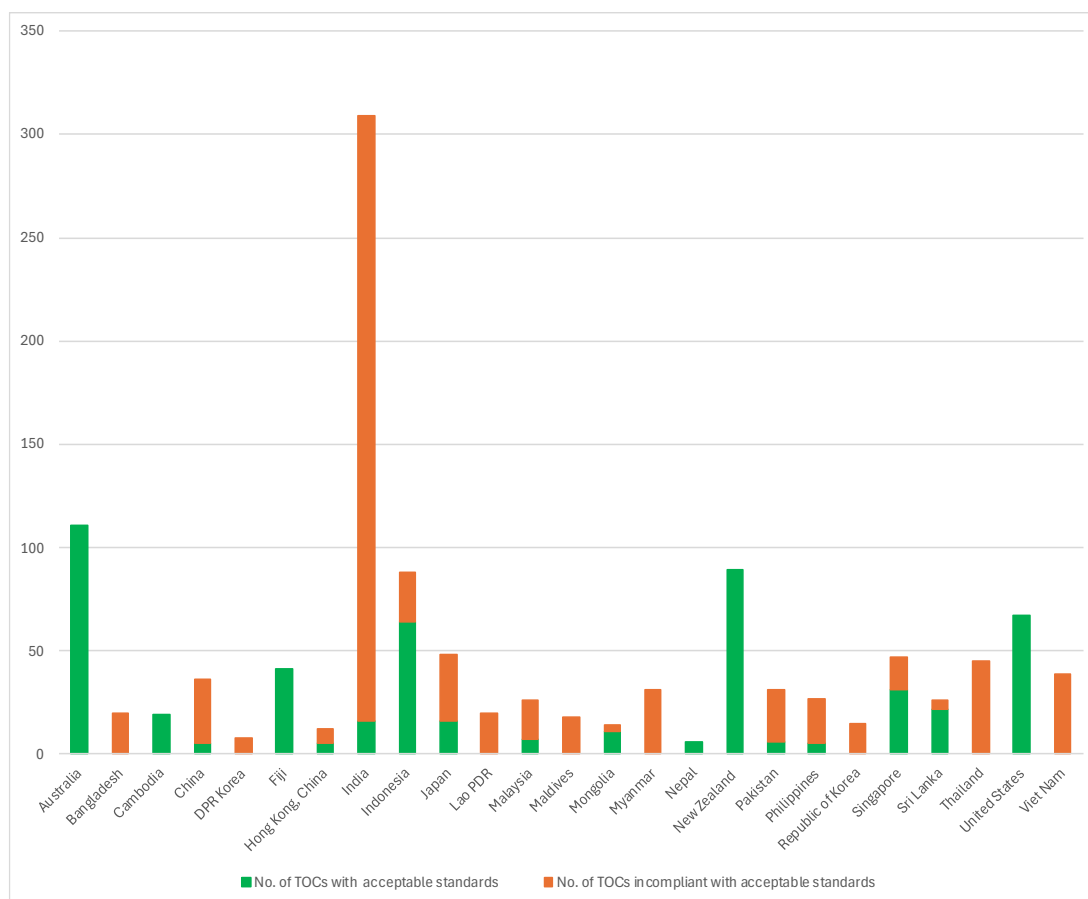


Figure 7: Analysis of Inbound TOC Compliant with Acceptable Standard by Administration, August 2025

2.11 **Table 2** showed the comparison of inbound TOC Points, the highest non-compliant TOC Points, belong to Category S airspace to Category S FIR TOC Points. Even with surveillance coverage, the separation minimum of more than 10 NM is currently implemented at TOC Points in the APAC Region.

Table 2: Comparison of Compliance of Inbound TOC Points

	Number of Category R airspace to Category S FIR TOC Point	Number of Category R/S airspace to Category R FIR TOC Point	Number of Category S airspace to Category S FIR TOC Point	Total
Compliant	57	315	52	424
Not compliant	47	71	407	525
Total	104	386	459	949

Project 30/10

2.12 Recalling the recommendation from ICAO Fourteenth Air Navigation Conference (AN-CONF/14), Project 30/10 (AN-Conf/14 – WP/10) envisioned the implementation of longitudinal separations of 55.5 km (30 NM) or less in oceanic and remote airspace, and 19 km (10 NM) or less elsewhere. It would be a regionally based, coordinated effort for seamless reduction of excessive separation minima where this has not already been achieved.

Recommendation 3.1/1 – Project 30/10 - Optimized implementation of longitudinal separation minima

That States:

- a) *within the processes of the planning and implementation regional groups, actively collaborate with neighbouring States to implement Project 30/10 – implementation of longitudinal separations of 55.5 km (30 NM) or less in oceanic and remote airspace, and 19 km (10 NM) or less elsewhere;*

that ICAO:

- b) *through the planning and implementation regional groups, develop regional action plans for the implementation of Project 30/10;*
- c) *support inter-regional collaboration for a harmonized implementation of Project 30/10; and*
- d) *consider other minimum service level procedures, via a framework, for implementation in oceanic and remote airspace.*

2.13 When comparing the latest survey results with the Project 30/10, 10 APAC Administrations (23%) used the 30 NM and less horizontal separation in the “Category R within State/Administration’s FIR” and only four Administrations use 30 NM or less in the “Category R/S → R TOC ATC Horizontal Spacing at Inbound FIR TOC Points”.

2.14 Noting the work necessary to fully achieving the Project 30/10 objectives, APANPIRG/36 adopted ***Decision APANPIRG/36/7 – Establishment of APAC Project 30/10 Task Force***, which aimed to provide the regional roadmap for the implementation of more efficient separation minimum in the Asia/Pacific Region, in accordance with AN-Conf/14 Recommendation 3.1/1.

Conclusions

2.15 Air traffic management (ATM) performance improvement was often hampered by the application of different separation minima across flight information region boundaries, or separation minima that are inconsistent with those typically applied across a region or sub-region. The Project 30/10 initiative aimed with the objective of enhanced operational efficiency of the global air navigation system.

2.16 Furthermore it was identified that air operations is one component of ICAO Long Term Aspiration Goal (LTAG) to reduce carbon emissions, many of the adverse environmental impacts of civil aviation activity can be reduced by the application of comprehensive measures embracing technological improvements, more efficient ATM and operational procedures, and the appropriate use of separation minima in coordination with airspace users. Therefore, ICAO urges all APAC States/Administrations to address this key aspect of capacity and efficiency within their National Air Navigation Plans.

2.17 In addition, ICAO APAC Office (and from a global perspective, ICAO HQ) also has a role in educating States about the human performance aspects that act as barriers to implementation of more efficient horizontal separations and aircraft spacing at TOC points, particularly those contained within the *Asia/Pacific Seamless ANS Plan*, e.g., human performance-based training and procedures for operational staff providing ATS, including the application of tactical, surveillance-based ATC separation and control techniques near minimum ATC separation.

3. ACTION BY THE MEETING

3.1 The meeting is invited to:

- a) note the information contained in this paper;
- b) urge all Administrations that have not done so to implement separation minimums to improve ATC service levels and update their ATS LOAs to meet the expectations of the *Asia/Pacific Seamless ANS Plan*; and
- c) discuss any relevant matters as appropriate.

.....

States/Administration	Q1: Minimum horizontal separation standard			Q3: FLAS	
	Acceptable standard: ≤ 50 NM	Acceptable standard: 5 NM	Acceptable standard: 5 NM	Acceptable standard: No	
	Category R Horizontal Separation	Category S Horizontal Separation	Category T Horizontal Separation	FLAS	FLAS remarks
Afghanistan	N/A	50 NM	No Report	Yes	
Australia	23 NM	5 NM	5 NM	No	
Bangladesh	N/A	50 NM/10 mins	5 NM (inside TMA) 10 NM (Outside TMA)	Yes	
Bhutan	N/A	50 NM	No Report		
Brunei Darussalam					
Cambodia	N/A	5NM	5NM	Yes	Yes, PNH FIR applies flight level allocation sceme based on Annex 2 Crossing track conflicts occur within 50NM with BKK FIR and HCM FIR Crossing track confliction not occures within 50NM with VTE FIR ATS surveillance coverage overlaps with PNH, BKK and HCM FIR
China	30NM	5 NM	3 NM	Yes	
Cook Islands	N/A	N/A	10-20 NM	No	
DPR Korea	N/A	17 NM	5NM	Yes	
Fiji	30 NM	5NM	5NM	No	
French Polynesia	30 NM	10-20 NM	No Report	No	
Hong Kong, China	N/A	5 NM	2.5/2.7/3/5 NM	No	While FLAS is applied at the FIR boundary, it does not apply within Hong Kong FIR.
India (Delhi)	50 NM - 10 mins 15 mis crossing tracking	5 NM	3 - 5 NM	No	No FLAS is applicable within DELHI FIR or adjacent INDIAN FIRS.
India (Mumbai)	50 NM - 10 mins 15 mis crossing tracking	5 NM	3 - 5 NM	Yes	The only FLAS applicable is FL330 with SANAA, MOGADISHU and Seychelles. (FLAS not applicable with MOGADISHU and Seychelles for ADS-C/ CPDLC equipped aircraft.) (FLAS is not applicable for FLT entering Mumbai Oceanic Airspace after time 0530 and exiting Mumbai Oceanic Airspace by time 1330 UTC).
India (Kolkata)	50 NM - 10 mins 15 mis crossing tracking	5 NM	3 - 5 NM	Yes	FLAS is applicable Over Bay of Bengal, on the following routes: N877, P628, L759, P646, L507 , L301, N895 and M770. FLAS is applicable Over continental airspace, on the following routes: A791 (CEA VOR to TASOP) and N877 (VZ- NNP- PRA- TASOP)
India (Chennai)	50 NM - 10 mins 15 mis crossing tracking	5 NM	3 - 5 NM	No	No FLAS is applicable within Chennai FIR or adjacent INDIAN FIRS.
Indonesia (Jakarta)	50NM	5NM	5NM	No	Jakarta FIR not implemented Flight Level Allocation Scheme , but our adjacent especially in South China Sea area has implemented FLAS/FLOS so we have to implement FLAS/FLOS before entering adjacent boundary considering implementation FLAS/FLOS on its FIR
Indonesia (Ujung Pandang)	50NM	5NM	5NM	No	
Japan	30NM	5NM	3NM	No	
Kiribati					
Lao PDR	30NM	30 NM	10 NM		
Macao, China	N/A	N/A	N/A	N/A	
Malaysia (Kota Kinabalu)	N/A	5 NM	5 NM	No	
Malaysia (Kuala Lumpur)	50 NM	5 NM	3 NM	No	
Maldives	50 NM	5 NM	5 NM	No	
Marshall Islands					
Micronesia					
Mongolia	N/A	16 NM	11 NM	Yes	ICAO ANNEX 2, Appendix 3.b. "RVSM-METERS"
Myanmar	80NM	80 - 50NM	20NM	Yes	
Nauru					
Nepal	N/A	5NM - 20NM	10NM	No	
New Caledonia					
New Zealand	30 NM	5 NM	3 NM	No	Details/Remarks: There is no flight level allocation scheme within the NZZO and NZCC FIR as we adhere to our table of cruising levels, any IFR aircraft track from 270 to 089 MAG the altitude or flight level must be odd e.g. A110, F130, F150. Any IFR aircraft track from 090 to 269 MAG the altitude or flight level must be even e.g. A120 F160 F180.

States/Administration	Q1: Minimum horizontal separation standard			Q3: FLAS	FLAS remarks
	Acceptable standard: ≤ 50 NM	Acceptable standard: 5 NM	Acceptable standard: 5 NM	Acceptable standard: No	
	Category R Horizontal Separation	Category S Horizontal Separation	Category T Horizontal Separation	FLAS	
Pakistan (Lahore FIR)	N/A	15 NM	5 NM (Except Multan Int'l Airport TMA)	No	
Pakistan (Karachi FIR)	N/A	15 NM	5 NM	No	
Palau					
Papua New Guinea	30NM	5NM	5NM	No	
Philippines	50 NM	5 NM	5 NM	Yes	Please refer to TABLE B: No PDC Flight Level Assignment
Republic of Korea	N/A	5NM	3NM	No	FLAS within Incheon FIR(RKRR) is operated in the area closer than 50NM from the FIR boundary.
Samoa					
Singapore	30 NM	5 NM	3 NM	Yes	FLAS is applied on ATS routes over the South China Sea
Solomon Islands (Honiara)					
Sri Lanka (Colombo)	50 NM	5 NM	5 NM	Yes	
Thailand	N/A	5 NM	3 NM	No	
Timor-Leste					
Tonga	N/A	25 NM	No Report	No	
Tuvalu					
United States (Anchorage Oceanic)	15 - 30 NM	5 NM	N/A	Yes	Details/Remarks: There is no written FLAS for the Anchorage Oceanic FIR but controller training emphasizes airspace optimization. For example if 1 aircraft is crossing a route system with a heavy traffic flow, that aircraft would be required to cross the route system above or below the major traffic flow to optimized the overall service in the airspace. If the same aircraft was crossing the route system during a period of lighter traffic, the aircraft would not be required to avoid the primary altitudes of the route system.
United States (Oakland Oceanic)	15 - 30 NM	5 NM	3 NM	Yes	Details/Remarks: There is no written FLAS for the Oakland Oceanic FIR but controller training emphasizes airspace optimization. For example if 1 aircraft is crossing a route system with a heavy traffic flow, that aircraft would be required to cross the route system above or below the major traffic flow to optimized the overall service in the airspace. If the same aircraft was crossing the route system during a period of lighter traffic, the aircraft would not be required to avoid the primary altitudes of the route system.
Vanuatu					
Viet Nam (Ho Chi Minh FIR)	N/A	10 NM	3 NM	Yes	Details/Remarks: Q1, Q2, W1, W2 G221, M765, N891, L628, G474, R588, R468, M755, M753, M505, N891, M510, R334, N892, N500, L625, L642, M771, M768, L644, B202
Viet Nam (Hanoi FIR)	N/A	5 NM	5 NM	Yes	Details/Remarks: A1; A202; A206; B214; B468; B465; R328; R335; R471; R474; G221; N639; W1; W2; Q1; Q2

States that responded for 2022 survey	48%
States that responded for 2023 survey	57%
States that responded for 2024 survey	36%
States that responded for 2025 survey	41%

S/No.	TOC Points	ATS Routes	Category of Airspace to FIR TOC Point (Inbound only)	Minimum horizontal separation standard	Inbound Transferring FIR	Auto hand-off surveillance data-sharing overlapping coverage at the TOC point : Yes or No	Remarks/Route Restrictions	Accepting State, FIR	Seamless ANS Plan compliance?
1	BUGBA	P753	Category R/S airspace to Category R FIR TOC Point	30NM	Auckland Oceanic	No	1. Auto hand off = Yes 2. Surveillance Data Sharing = No 3. Overlapping Coverage at TOC = n/a 4. AIDC used = Yes	AUSTRALIA	Compliant
2	ELGUN	M643	Category R/S airspace to Category R FIR TOC Point	30NM	Auckland Oceanic	No	1. Auto hand off = Yes 2. Surveillance Data Sharing = No 3. Overlapping Coverage at TOC = n/a 4. AIDC used = Yes	AUSTRALIA	Compliant
3	OMKIN	L508	Category R/S airspace to Category R FIR TOC Point	30NM	Auckland Oceanic	No	1. Auto hand off = Yes 2. Surveillance Data Sharing = No 3. Overlapping Coverage at TOC = n/a 4. AIDC used = Yes	AUSTRALIA	Compliant
4	TOMAR	M625	Category R/S airspace to Category R FIR TOC Point	30NM	Auckland Oceanic	No	1. Auto hand off = Yes 2. Surveillance Data Sharing = No 3. Overlapping Coverage at TOC = n/a 4. AIDC used = Yes	AUSTRALIA	Compliant
5	MIDAT	L513	Category R/S airspace to Category R FIR TOC Point	30NM	Auckland Oceanic	No	1. Auto hand off = Yes 2. Surveillance Data Sharing = No 3. Overlapping Coverage at TOC = n/a 4. AIDC used = Yes	AUSTRALIA	Compliant
6	SULON	N750	Category R/S airspace to Category R FIR TOC Point	30NM	Auckland Oceanic	No	1. Auto hand off = Yes 2. Surveillance Data Sharing = No 3. Overlapping Coverage at TOC = n/a 4. AIDC used = Yes	AUSTRALIA	Compliant
7	NUMSA	P880	Category R/S airspace to Category R FIR TOC Point	30NM	Auckland Oceanic	No	1. Auto hand off = Yes 2. Surveillance Data Sharing = No 3. Overlapping Coverage at TOC = n/a 4. AIDC used = Yes	AUSTRALIA	Compliant
8	SASRO	N759	Category R/S airspace to Category R FIR TOC Point	30NM	Auckland Oceanic	No	1. Auto hand off = Yes 2. Surveillance Data Sharing = No 3. Overlapping Coverage at TOC = n/a 4. AIDC used = Yes	AUSTRALIA	Compliant
9	LEGAN	L521	Category R/S airspace to Category R FIR TOC Point	30NM	Auckland Oceanic	No	1. Auto hand off = Yes 2. Surveillance Data Sharing = No 3. Overlapping Coverage at TOC = n/a 4. AIDC used = Yes	AUSTRALIA	Compliant
10	RUNOD	L503	Category R/S airspace to Category R FIR TOC Point	30NM	Auckland Oceanic	No	1. Auto hand off = Yes 2. Surveillance Data Sharing = No 3. Overlapping Coverage at TOC = n/a 4. AIDC used = Yes	AUSTRALIA	Compliant
11	OLREL	N774	Category R/S airspace to Category R FIR TOC Point	30NM	Auckland Oceanic	No	1. Auto hand off = Yes 2. Surveillance Data Sharing = No 3. Overlapping Coverage at TOC = n/a 4. AIDC used = Yes	AUSTRALIA	Compliant
12	VEPAS	M639	Category R/S airspace to Category R FIR TOC Point	30NM	Auckland Oceanic	No	1. Auto hand off = Yes 2. Surveillance Data Sharing = No 3. Overlapping Coverage at TOC = n/a 4. AIDC used = Yes	AUSTRALIA	Compliant
13	SARAP	G595	Category R/S airspace to Category R FIR TOC Point	30NM	Auckland Oceanic	No	1. Auto hand off = Yes 2. Surveillance Data Sharing = No 3. Overlapping Coverage at TOC = n/a 4. AIDC used = Yes	AUSTRALIA	Compliant
14	RIGMI		Category R/S airspace to Category R FIR TOC Point	30NM	Auckland Oceanic	No	1. Auto hand off = Yes 2. Surveillance Data Sharing = No 3. Overlapping Coverage at TOC = n/a 4. AIDC used = Yes	AUSTRALIA	Compliant
15	TEKEP	B450	Category R/S airspace to Category R FIR TOC Point	30NM	Auckland Oceanic	No	1. Auto hand off = Yes 2. Surveillance Data Sharing = No 3. Overlapping Coverage at TOC = n/a 4. AIDC used = Yes	AUSTRALIA	Compliant
16	DOVOM	G329	Category R/S airspace to Category R FIR TOC Point	30NM	Nadi NFFF	No	1. Auto hand off = Yes 2. Surveillance Data Sharing = No 3. Overlapping Coverage at TOC = n/a 4. AIDC used = Yes	AUSTRALIA	Compliant
17	UBLIN	A579	Category R/S airspace to Category R FIR TOC Point	30NM	Nadi NFFF	No	1. Auto hand off = Yes 2. Surveillance Data Sharing = No 3. Overlapping Coverage at TOC = n/a 4. AIDC used = Yes	AUSTRALIA	Compliant
18	RUMIX	B333	Category R/S airspace to Category R FIR TOC Point	30NM	Nadi NFFF	No	1. Auto hand off = Yes 2. Surveillance Data Sharing = No 3. Overlapping Coverage at TOC = n/a 4. AIDC used = Yes	AUSTRALIA	Compliant
19	VESUN	B580	Category R/S airspace to Category R FIR TOC Point	30NM	Nadi NFFF	No	1. Auto hand off = Yes 2. Surveillance Data Sharing = No 3. Overlapping Coverage at TOC = n/a 4. AIDC used = Yes	AUSTRALIA	Compliant
20	TEBUR	B578	Category R/S airspace to Category R FIR TOC Point	30NM	Nadi NFFF	No	1. Auto hand off = Yes 2. Surveillance Data Sharing = No 3. Overlapping Coverage at TOC = n/a 4. AIDC used = Yes	AUSTRALIA	Compliant
21	MEPAB	G591	Category R/S airspace to Category R FIR TOC Point	30NM	Nadi NFFF	No	1. Auto hand off = Yes 2. Surveillance Data Sharing = No 3. Overlapping Coverage at TOC = n/a 4. AIDC used = Yes	AUSTRALIA	Compliant
22	BODEG	B586	Category R/S airspace to Category R FIR TOC Point	30NM	Nadi NFFF	No	1. Auto hand off = Yes 2. Surveillance Data Sharing = No 3. Overlapping Coverage at TOC = n/a 4. AIDC used = Yes	AUSTRALIA	Compliant
23	LAMAP	NO ATS RTE	Category R/S airspace to Category R FIR TOC Point	CLASS G AIRSPACE BOUNDARY	HONIARA AGGG	No		AUSTRALIA	Compliant
24	RIPNA	A598	Category R/S airspace to Category R FIR TOC Point	CLASS G AIRSPACE BOUNDARY	HONIARA AGGG	No		AUSTRALIA	Compliant
25	NODOK	G342	Category R/S airspace to Category R FIR TOC Point	CLASS G AIRSPACE BOUNDARY	HONIARA AGGG	No		AUSTRALIA	Compliant

S/No.	TOC Points	ATS Routes	Category of Airspace to FIR TOC Point (Inbound only)	Minimum horizontal separation standard	Inbound Transferring FIR	Auto hand-off surveillance data-sharing overlapping coverage at the TOC point : Yes or No	Remarks/Route Restrictions	Accepting State, FIR	Seamless ANS Plan compliance?
26	ENOUS	A597	Category R/S airspace to Category R FIR TOC Point	30NM	Nadi NFFF	No	TO HONIARA CLASS A // 1. Auto hand off = Yes 2. Surveillance Data Sharing = No 3. Overlapping Coverage at TOC = n/a 4. AIDC used = Yes	AUSTRALIA	Compliant
27	NIPER	B598	Category R/S airspace to Category R FIR TOC Point	30NM	Nadi NFFF	No	TO HONIARA CLASS A // 1. Auto hand off = Yes 2. Surveillance Data Sharing = No 3. Overlapping Coverage at TOC = n/a 4. AIDC used = Yes	AUSTRALIA	Compliant
28	AKNAK	R450	Category R/S airspace to Category R FIR TOC Point	30NM	Nadi NFFF	No	TO HONIARA CLASS A // 1. Auto hand off = Yes 2. Surveillance Data Sharing = No 3. Overlapping Coverage at TOC = n/a 4. AIDC used = Yes	AUSTRALIA	Compliant
29	LEGOT	B452	Category R/S airspace to Category R FIR TOC Point	30NM	Nadi NFFF	No	TO HONIARA CLASS A // 1. Auto hand off = Yes 2. Surveillance Data Sharing = No 3. Overlapping Coverage at TOC = n/a 4. AIDC used = Yes	AUSTRALIA	Compliant
30	KAPNO	B590	Category R/S airspace to Category R FIR TOC Point	30NM	Nadi NFFF	No	TO HONIARA CLASS A // 1. Auto hand off = Yes 2. Surveillance Data Sharing = No 3. Overlapping Coverage at TOC = n/a 4. AIDC used = Yes	AUSTRALIA	Compliant
31	BULRO	G223	Category R/S airspace to Category R FIR TOC Point	30NM	Nadi NFFF	No	TO HONIARA CLASS A // 1. Auto hand off = Yes 2. Surveillance Data Sharing = No 3. Overlapping Coverage at TOC = n/a 4. AIDC used = Yes	AUSTRALIA	Compliant
32	UPDIX	A584	Category R/S airspace to Category R FIR TOC Point	30NM	Nadi NFFF	No	TO HONIARA CLASS A // 1. Auto hand off = Yes 2. Surveillance Data Sharing = No 3. Overlapping Coverage at TOC = n/a 4. AIDC used = Yes	AUSTRALIA	Compliant
33	LEPKA	B326	Category R/S airspace to Category R FIR TOC Point	30NM	Nadi NFFF	No	TO HONIARA CLASS A // 1. Auto hand off = Yes 2. Surveillance Data Sharing = No 3. Overlapping Coverage at TOC = n/a 4. AIDC used = Yes	AUSTRALIA	Compliant
34	KASKU	A578	Category R/S airspace to Category R FIR TOC Point	30NM	Nadi NFFF	No	TO HONIARA CLASS A // 1. Auto hand off = Yes 2. Surveillance Data Sharing = No 3. Overlapping Coverage at TOC = n/a 4. AIDC used = Yes	AUSTRALIA	Compliant
35	MARTI	A598	Category R/S airspace to Category R FIR TOC Point	30NM	Oakland KZAK	No	1. Auto hand off = Yes 2. Surveillance Data Sharing = No 3. Overlapping Coverage at TOC = n/a 4. AIDC used = Yes	AUSTRALIA	Compliant
36	ELNUR	B589	Category R/S airspace to Category R FIR TOC Point	30NM	Oakland KZAK	No	1. Auto hand off = Yes 2. Surveillance Data Sharing = No 3. Overlapping Coverage at TOC = n/a 4. AIDC used = Yes	AUSTRALIA	Compliant
37	MUBIT	G223	Category R/S airspace to Category R FIR TOC Point	30NM	Oakland KZAK	No	1. Auto hand off = Yes 2. Surveillance Data Sharing = No 3. Overlapping Coverage at TOC = n/a 4. AIDC used = Yes	AUSTRALIA	Compliant
38	FENSE	A578	Category R/S airspace to Category R FIR TOC Point	30NM	Oakland KZAK	No	1. Auto hand off = Yes 2. Surveillance Data Sharing = No 3. Overlapping Coverage at TOC = n/a 4. AIDC used = Yes	AUSTRALIA	Compliant
39	TASAK	B589	Category R/S airspace to Category R FIR TOC Point	30NM	Port Moresby AYPM	No	TO HONIARA CLASS A // 1. Auto hand off = Yes 2. Surveillance Data Sharing = No 3. Overlapping Coverage at TOC = n/a 4. AIDC used = Yes	AUSTRALIA	Compliant
40	PONOK	B452	Category R/S airspace to Category R FIR TOC Point	30NM	Port Moresby AYPM	No	TO HONIARA CLASS A // 1. Auto hand off = Yes 2. Surveillance Data Sharing = No 3. Overlapping Coverage at TOC = n/a 4. AIDC used = Yes	AUSTRALIA	Compliant
41	KAKOP	A597	Category R/S airspace to Category R FIR TOC Point	30NM	Port Moresby AYPM	No	TO HONIARA CLASS A // 1. Auto hand off = Yes 2. Surveillance Data Sharing = No 3. Overlapping Coverage at TOC = n/a 4. AIDC used = Yes	AUSTRALIA	Compliant
42	DUGOM	R450	Category R/S airspace to Category R FIR TOC Point	30NM	Port Moresby AYPM	No	TO HONIARA CLASS A // 1. Auto hand off = Yes 2. Surveillance Data Sharing = No 3. Overlapping Coverage at TOC = n/a 4. AIDC used = Yes	AUSTRALIA	Compliant
43	ENDAL	R599	Category R/S airspace to Category R FIR TOC Point	30NM	Port Moresby AYPM	No	TO HONIARA CLASS A // 1. Auto hand off = Yes 2. Surveillance Data Sharing = No 3. Overlapping Coverage at TOC = n/a 4. AIDC used = Yes	AUSTRALIA	Compliant
44	NIPOK	B598	Category R/S airspace to Category R FIR TOC Point	30NM	Port Moresby AYPM	No	TO HONIARA CLASS A // 1. Auto hand off = Yes 2. Surveillance Data Sharing = No 3. Overlapping Coverage at TOC = n/a 4. AIDC used = Yes	AUSTRALIA	Compliant

S/No.	TOC Points	ATS Routes	Category of Airspace to FIR TOC Point (Inbound only)	Minimum horizontal separation standard	Inbound Transferring FIR	Auto hand-off surveillance data-sharing overlapping coverage at the TOC point : Yes or No	Remarks/Route Restrictions	Accepting State, FIR	Seamless ANS Plan compliance?
45	HOBBO	R213	Category R/S airspace to Category R FIR TOC Point	30NM	Port Moresby AYPM	No	1. Auto hand off = Yes 2. Surveillance Data Sharing = No 3. Overlapping Coverage at TOC = AYPM have surveillance coverage extending into the FIR 4. AIDC used = Yes	AUSTRALIA	Compliant
46	TICAL	J917	Category R/S airspace to Category R FIR TOC Point	30NM	Port Moresby AYPM	No	1. Auto hand off = Yes 2. Surveillance Data Sharing = No 3. Overlapping Coverage at TOC = AYPM have surveillance coverage extending into the FIR 4. AIDC used = Yes	AUSTRALIA	Compliant
47	TEKAN	B586	Category R/S airspace to Category R FIR TOC Point	30NM	Port Moresby AYPM	No	1. Auto hand off = Yes 2. Surveillance Data Sharing = No 3. Overlapping Coverage at TOC = AYPM have surveillance coverage extending into the FIR 4. AIDC used = Yes	AUSTRALIA	Compliant
48	WEENA	G205	Category R/S airspace to Category R FIR TOC Point	30NM	Port Moresby AYPM	No	1. Auto hand off = Yes 2. Surveillance Data Sharing = No 3. Overlapping Coverage at TOC = AYPM have surveillance coverage extending into the FIR 4. AIDC used = Yes	AUSTRALIA	Compliant
49	DUKUB	B333	Category R/S airspace to Category R FIR TOC Point	30NM	Port Moresby AYPM	No	1. Auto hand off = Yes 2. Surveillance Data Sharing = No 3. Overlapping Coverage at TOC = AYPM have surveillance coverage extending into the FIR 4. AIDC used = Yes	AUSTRALIA	Compliant
50	VIPAM	B220	Category R/S airspace to Category R FIR TOC Point	30NM	Port Moresby AYPM	No	1. Auto hand off = Yes 2. Surveillance Data Sharing = No 3. Overlapping Coverage at TOC = AYPM have surveillance coverage extending into the FIR 4. AIDC used = Yes	AUSTRALIA	Compliant
51	APISO	B462	Category R/S airspace to Category R FIR TOC Point	30NM	Port Moresby AYPM	No	1. Auto hand off = Yes 2. Surveillance Data Sharing = No 3. Overlapping Coverage at TOC = AYPM have surveillance coverage extending into the FIR 4. AIDC used = Yes	AUSTRALIA	Compliant
52	TOSAS	R346	Category R/S airspace to Category R FIR TOC Point	30NM	Port Moresby AYPM	No	1. Auto hand off = Yes 2. Surveillance Data Sharing = No 3. Overlapping Coverage at TOC = AYPM have surveillance coverage extending into the FIR 4. AIDC used = Yes	AUSTRALIA	Compliant
53	KAPSO	R210	Category R/S airspace to Category R FIR TOC Point	30NM	Port Moresby AYPM	No	1. Auto hand off = Yes 2. Surveillance Data Sharing = No 3. Overlapping Coverage at TOC = AYPM have surveillance coverage extending into the FIR 4. AIDC used = Yes	AUSTRALIA	Compliant
54	APUKA	A216	Category R/S airspace to Category R FIR TOC Point	30NM	Port Moresby AYPM	No	1. Auto hand off = Yes 2. Surveillance Data Sharing = No 3. Overlapping Coverage at TOC = AYPM have surveillance coverage extending into the FIR 4. AIDC used = Yes	AUSTRALIA	Compliant
55	GODIP	W677	Category R/S airspace to Category R FIR TOC Point	30NM	Port Moresby AYPM	No	1. Auto hand off = Yes 2. Surveillance Data Sharing = No 3. Overlapping Coverage at TOC = AYPM have surveillance coverage extending into the FIR 4. AIDC used = Yes	AUSTRALIA	Compliant
56	POSOX	B598	Category R/S airspace to Category R FIR TOC Point	30NM	Port Moresby AYPM	No	1. Auto hand off = Yes 2. Surveillance Data Sharing = No 3. Overlapping Coverage at TOC = AYPM have surveillance coverage extending into the FIR 4. AIDC used = Yes	AUSTRALIA	Compliant
57	LIDIT	R204	Category R/S airspace to Category R FIR TOC Point	30NM	Port Moresby AYPM	No	1. Auto hand off = Yes 2. Surveillance Data Sharing = No 3. Overlapping Coverage at TOC = AYPM have surveillance coverage extending into the FIR 4. AIDC used = Yes	AUSTRALIA	Compliant
58	BEGMI	G459	Category R/S airspace to Category R FIR TOC Point	30NM	Ujung Pandang WAAF	No	1. Auto hand off = Yes 2. Surveillance Data Sharing = No 3. Overlapping Coverage at TOC = UJUNG have surveillance coverage extending into the FIR 4. AIDC used = Yes	AUSTRALIA	Compliant
59	OPABA	B587	Category R/S airspace to Category R FIR TOC Point	30NM	Ujung Pandang WAAF	No	1. Auto hand off = Yes 2. Surveillance Data Sharing = No 3. Overlapping Coverage at TOC = UJUNG have surveillance coverage extending into the FIR 4. AIDC used = Yes	AUSTRALIA	Compliant

S/No.	TOC Points	ATS Routes	Category of Airspace to FIR TOC Point (Inbound only)	Minimum horizontal separation standard	Inbound Transferring FIR	Auto hand-off surveillance data-sharing overlapping coverage at the TOC point : Yes or No	Remarks/Route Restrictions	Accepting State, FIR	Seamless ANS Plan compliance?
60	TOREX	B472	Category R/S airspace to Category R FIR TOC Point	30NM	Ujung Pandang WAAF	No	1. Auto hand off = Yes 2. Surveillance Data Sharing = No 3. Overlapping Coverage at TOC = UJUNG have surveillance coverage extending into the FIR 4. AIDC used = Yes	AUSTRALIA	Compliant
61	GUTEV	R340	Category R/S airspace to Category R FIR TOC Point	30NM	Ujung Pandang WAAF	No	1. Auto hand off = Yes 2. Surveillance Data Sharing = No 3. Overlapping Coverage at TOC = UJUNG have surveillance coverage extending into the FIR 4. AIDC used = Yes	AUSTRALIA	Compliant
62	BUTPA	A461	Category R/S airspace to Category R FIR TOC Point	30NM	Ujung Pandang WAAF	No	1. Auto hand off = Yes 2. Surveillance Data Sharing = No 3. Overlapping Coverage at TOC = UJUNG have surveillance coverage extending into the FIR 4. AIDC used = Yes	AUSTRALIA	Compliant
63	ELBIS	M768	Category R/S airspace to Category R FIR TOC Point	30NM	Ujung Pandang WAAF	No	AT OR ABOVE FL250 // 1. Auto hand off = Yes 2. Surveillance Data Sharing = No 3. Overlapping Coverage at TOC = UJUNG have surveillance coverage extending into the FIR 4. AIDC used = Yes	AUSTRALIA	Compliant
64	ELBIS	M768	Category R/S airspace to Category R FIR TOC Point	Class G airspace boundary	Timor Leste	No	< FL250	AUSTRALIA	Compliant
65	TODOT	Z10	Category R/S airspace to Category R FIR TOC Point	Class G airspace boundary	Timor Leste	No	< FL250	AUSTRALIA	Compliant
66	METAN	Z69	Category R/S airspace to Category R FIR TOC Point	Class G airspace boundary	Timor Leste	No	< FL250	AUSTRALIA	Compliant
67	ISMUD	Z86	Category R/S airspace to Category R FIR TOC Point	Class G airspace boundary	Timor Leste	No	< FL250	AUSTRALIA	Compliant
68	KIKEM	M774	Category R/S airspace to Category R FIR TOC Point	30NM	Ujung Pandang WAAF	No	1. Auto hand off = Yes 2. Surveillance Data Sharing = No 3. Overlapping Coverage at TOC = UJUNG have surveillance coverage extending into the FIR 4. AIDC used = Yes	AUSTRALIA	Compliant
69	MAKNI	J199	Category R/S airspace to Category R FIR TOC Point	30NM	Ujung Pandang WAAF	No	1. Auto hand off = Yes 2. Surveillance Data Sharing = No 3. Overlapping Coverage at TOC = UJUNG have surveillance coverage extending into the FIR 4. AIDC used = Yes	AUSTRALIA	Compliant
70	ALGO	A458	Category R/S airspace to Category R FIR TOC Point	30NM	Ujung Pandang WAAF	No	1. Auto hand off = Yes 2. Surveillance Data Sharing = No 3. Overlapping Coverage at TOC = UJUNG have surveillance coverage extending into the FIR 4. AIDC used = Yes	AUSTRALIA	Compliant
71	SATNA	M766	Category R/S airspace to Category R FIR TOC Point	30NM	Ujung Pandang WAAF	No	1. Auto hand off = Yes 2. Surveillance Data Sharing = No 3. Overlapping Coverage at TOC = UJUNG have surveillance coverage extending into the FIR 4. AIDC used = Yes	AUSTRALIA	Compliant
72	ONOXA	A587	Category R/S airspace to Category R FIR TOC Point	30NM	Ujung Pandang WAAF	No	1. Auto hand off = Yes 2. Surveillance Data Sharing = No 3. Overlapping Coverage at TOC = UJUNG have surveillance coverage extending into the FIR 4. AIDC used = Yes	AUSTRALIA	Compliant
73	ATMAP	M635	Category R/S airspace to Category R FIR TOC Point	30NM	Ujung Pandang WAAF	No	1. Auto hand off = Yes 2. Surveillance Data Sharing = No 3. Overlapping Coverage at TOC = UJUNG have surveillance coverage extending into the FIR 4. AIDC used = Yes	AUSTRALIA	Compliant
74	BOPLO	T20	Category R/S airspace to Category R FIR TOC Point	30NM	Ujung Pandang WAAF	No	1. Auto hand off = Yes 2. Surveillance Data Sharing = No 3. Overlapping Coverage at TOC = UJUNG have surveillance coverage extending into the FIR 4. AIDC used = Yes	AUSTRALIA	Compliant
75	EGATU	G578	Category R/S airspace to Category R FIR TOC Point	30NM	Ujung Pandang WAAF	No	1. Auto hand off = Yes 2. Surveillance Data Sharing = No 3. Overlapping Coverage at TOC = UJUNG have surveillance coverage extending into the FIR 4. AIDC used = Yes	AUSTRALIA	Compliant
76	PUPIT	R592	Category R/S airspace to Category R FIR TOC Point	30NM	Ujung Pandang WAAF	No	1. Auto hand off = Yes 2. Surveillance Data Sharing = No 3. Overlapping Coverage at TOC = UJUNG have surveillance coverage extending into the FIR 4. AIDC used = Yes	AUSTRALIA	Compliant
77	SAPDA	T58	Category R/S airspace to Category R FIR TOC Point	30NM	Jakarta WIIF	No	1. Auto hand off = NO 2. Surveillance Data Sharing = No 3. Overlapping Coverage at TOC = N/A 4. AIDC used = NO (WIIF SYSTEM DOES NOT ALLOW IT)	AUSTRALIA	Compliant
78	LAMOB	B469	Category R/S airspace to Category R FIR TOC Point	30NM	Jakarta WIIF	No	1. Auto hand off = NO 2. Surveillance Data Sharing = No 3. Overlapping Coverage at TOC = N/A 4. AIDC used = NO (WIIF SYSTEM DOES NOT ALLOW IT)	AUSTRALIA	Compliant

S/No.	TOC Points	ATS Routes	Category of Airspace to FIR TOC Point (Inbound only)	Minimum horizontal separation standard	Inbound Transferring FIR	Auto hand-off surveillance data-sharing overlapping coverage at the TOC point : Yes or No	Remarks/Route Restrictions	Accepting State, FIR	Seamless ANS Plan compliance?
79	ATMAL	N752	Category R/S airspace to Category R FIR TOC Point	30NM	Jakarta WIF	No	1. Auto hand off = NO 2. Surveillance Data Sharing = No 3. Overlapping Coverage at TOC = N/A 4. AIDC used = NO (WIF SYSTEM DOES NOT ALLOW IT)	AUSTRALIA	Compliant
80	ISRAN	G209	Category R/S airspace to Category R FIR TOC Point	30NM	Jakarta WIF	No	1. Auto hand off = NO 2. Surveillance Data Sharing = No 3. Overlapping Coverage at TOC = N/A 4. AIDC used = NO (WIF SYSTEM DOES NOT ALLOW IT)	AUSTRALIA	Compliant
81	PAVGO	T12	Category R/S airspace to Category R FIR TOC Point	30NM	Jakarta WIF	No	1. Auto hand off = NO 2. Surveillance Data Sharing = No 3. Overlapping Coverage at TOC = N/A 4. AIDC used = NO (WIF SYSTEM DOES NOT ALLOW IT)	AUSTRALIA	Compliant
82	IKEXO	G200	Category R/S airspace to Category R FIR TOC Point	30NM	Jakarta WIF	No	1. Auto hand off = NO 2. Surveillance Data Sharing = No 3. Overlapping Coverage at TOC = N/A 4. AIDC used = NO (WIF SYSTEM DOES NOT ALLOW IT)	AUSTRALIA	Compliant
83	AKUKO	B325	Category R/S airspace to Category R FIR TOC Point	30NM	Jakarta WIF	No	1. Auto hand off = NO 2. Surveillance Data Sharing = No 3. Overlapping Coverage at TOC = N/A 4. AIDC used = NO (WIF SYSTEM DOES NOT ALLOW IT)	AUSTRALIA	Compliant
84	POSOD	N633	Category R/S airspace to Category R FIR TOC Point	30NM	Jakarta WIF	No	1. Auto hand off = NO 2. Surveillance Data Sharing = No 3. Overlapping Coverage at TOC = N/A 4. AIDC used = NO (WIF SYSTEM DOES NOT ALLOW IT)	AUSTRALIA	Compliant
85	ELATI	N640	Category R/S airspace to Category R FIR TOC Point	50NM	COLOMBO	No	1. Auto hand off = NO 2. Surveillance Data Sharing = No 3. Overlapping Coverage at TOC = N/A 4. AIDC used = NO	AUSTRALIA	Compliant
86	DOGAR	M641	Category R/S airspace to Category R FIR TOC Point	50NM	COLOMBO	No	1. Auto hand off = NO 2. Surveillance Data Sharing = No 3. Overlapping Coverage at TOC = N/A 4. AIDC used = NO	AUSTRALIA	Compliant
87	ALVES		Category R/S airspace to Category R FIR TOC Point	50NM	COLOMBO	No	1. Auto hand off = NO 2. Surveillance Data Sharing = No 3. Overlapping Coverage at TOC = N/A 4. AIDC used = NO	AUSTRALIA	Compliant
88	JAVVI		Category R/S airspace to Category R FIR TOC Point	50NM	COLOMBO	No	1. Auto hand off = NO 2. Surveillance Data Sharing = No 3. Overlapping Coverage at TOC = N/A 4. AIDC used = NO	AUSTRALIA	Compliant
89	KADAP	P627	Category R/S airspace to Category R FIR TOC Point	50NM	COLOMBO	No	1. Auto hand off = NO 2. Surveillance Data Sharing = No 3. Overlapping Coverage at TOC = N/A 4. AIDC used = NO	AUSTRALIA	Compliant
90	VIYYA		Category R/S airspace to Category R FIR TOC Point	50NM	COLOMBO	No	1. Auto hand off = NO 2. Surveillance Data Sharing = No 3. Overlapping Coverage at TOC = N/A 4. AIDC used = NO	AUSTRALIA	Compliant
91	APOVU		Category R/S airspace to Category R FIR TOC Point	50NM	COLOMBO	No	1. Auto hand off = NO 2. Surveillance Data Sharing = No 3. Overlapping Coverage at TOC = N/A 4. AIDC used = NO	AUSTRALIA	Compliant
92	NALDO		Category R/S airspace to Category R FIR TOC Point	50NM	COLOMBO	No	1. Auto hand off = NO 2. Surveillance Data Sharing = No 3. Overlapping Coverage at TOC = N/A 4. AIDC used = NO	AUSTRALIA	Compliant
93	DADAR	L894	Category R/S airspace to Category R FIR TOC Point	50NM	COLOMBO	No	1. Auto hand off = NO 2. Surveillance Data Sharing = No 3. Overlapping Coverage at TOC = N/A 4. AIDC used = NO	AUSTRALIA	Compliant
94	SABEK	N628	Category R/S airspace to Category R FIR TOC Point	50NM	Male VRMF	No	1. Auto hand off = NO 2. Surveillance Data Sharing = No 3. Overlapping Coverage at TOC = N/A 4. AIDC used = NO	AUSTRALIA	Compliant
95	SOLIH		Category R/S airspace to Category R FIR TOC Point	50NM	Male VRMF	No	1. Auto hand off = NO 2. Surveillance Data Sharing = No 3. Overlapping Coverage at TOC = N/A 4. AIDC used = NO	AUSTRALIA	Compliant
96	REPAN		Category R/S airspace to Category R FIR TOC Point	50NM	Male VRMF	No	1. Auto hand off = NO 2. Surveillance Data Sharing = No 3. Overlapping Coverage at TOC = N/A 4. AIDC used = NO	AUSTRALIA	Compliant
97	VAPSA		Category R/S airspace to Category R FIR TOC Point	50NM	Male VRMF	No	1. Auto hand off = NO 2. Surveillance Data Sharing = No 3. Overlapping Coverage at TOC = N/A 4. AIDC used = NO	AUSTRALIA	Compliant
98	LOVMA		Category R/S airspace to Category R FIR TOC Point	50NM	Male VRMF	No	1. Auto hand off = NO 2. Surveillance Data Sharing = No 3. Overlapping Coverage at TOC = N/A 4. AIDC used = NO	AUSTRALIA	Compliant
99	TEROS		Category R/S airspace to Category R FIR TOC Point	50NM	Male VRMF	No	1. Auto hand off = NO 2. Surveillance Data Sharing = No 3. Overlapping Coverage at TOC = N/A 4. AIDC used = NO	AUSTRALIA	Compliant
100	LATEP	R348	Category R/S airspace to Category R FIR TOC Point	50NM	Mauritius FIMM	No	1. Auto hand off = YES 2. Surveillance Data Sharing = No 3. Overlapping Coverage at TOC = N/A 4. AIDC used = YES	AUSTRALIA	Compliant

S/No.	TOC Points	ATS Routes	Category of Airspace to FIR TOC Point (Inbound only)	Minimum horizontal separation standard	Inbound Transferring FIR	Auto hand-off surveillance data-sharing overlapping coverage at the TOC point: Yes or No	Remarks/Route Restrictions	Accepting State, FIR	Seamless ANS Plan compliance?
101	GUDUG	R212	Category R/S airspace to Category R FIR TOC Point	50NM	Mauritius FIMM	No	1. Auto hand off = YES 2. Surveillance Data Sharing = No 3. Overlapping Coverage at TOC = N/A 4. AIDC used = YES	AUSTRALIA	Compliant
102	KALBI	P627	Category R/S airspace to Category R FIR TOC Point	50NM	Mauritius FIMM	No	1. Auto hand off = YES 2. Surveillance Data Sharing = No 3. Overlapping Coverage at TOC = N/A 4. AIDC used = YES	AUSTRALIA	Compliant
103	LELED	L774	Category R/S airspace to Category R FIR TOC Point	50NM	Mauritius FIMM	No	1. Auto hand off = YES 2. Surveillance Data Sharing = No 3. Overlapping Coverage at TOC = N/A 4. AIDC used = YES	AUSTRALIA	Compliant
104	PEDPI	N633	Category R/S airspace to Category R FIR TOC Point	50NM	Mauritius FIMM	No	1. Auto hand off = YES 2. Surveillance Data Sharing = No 3. Overlapping Coverage at TOC = N/A 4. AIDC used = YES	AUSTRALIA	Compliant
105	KADEM	G200	Category R/S airspace to Category R FIR TOC Point	50NM	Mauritius FIMM	No	1. Auto hand off = YES 2. Surveillance Data Sharing = No 3. Overlapping Coverage at TOC = N/A 4. AIDC used = YES	AUSTRALIA	Compliant
106	SOLIT	UT594	Category R/S airspace to Category R FIR TOC Point	50NM	Mauritius FIMM	No	1. Auto hand off = YES 2. Surveillance Data Sharing = No 3. Overlapping Coverage at TOC = N/A 4. AIDC used = YES	AUSTRALIA	Compliant
107	MABAD		Category R/S airspace to Category R FIR TOC Point	50NM	Mauritius FIMM	No	1. Auto hand off = YES 2. Surveillance Data Sharing = No 3. Overlapping Coverage at TOC = N/A 4. AIDC used = YES	AUSTRALIA	Compliant
108	GUGON	A333	Category R/S airspace to Category R FIR TOC Point	50NM	Mauritius FIMM	No	1. Auto hand off = YES 2. Surveillance Data Sharing = No 3. Overlapping Coverage at TOC = N/A 4. AIDC used = YES	AUSTRALIA	Compliant
109	SUNKI		Category R/S airspace to Category R FIR TOC Point	50NM	Mauritius FIMM	No	1. Auto hand off = YES 2. Surveillance Data Sharing = No 3. Overlapping Coverage at TOC = N/A 4. AIDC used = YES	AUSTRALIA	Compliant
110	RERAB	B585	Category R/S airspace to Category R FIR TOC Point	50NM	Mauritius FIMM	No	1. Auto hand off = YES 2. Surveillance Data Sharing = No 3. Overlapping Coverage at TOC = N/A 4. AIDC used = YES	AUSTRALIA	Compliant
111	AAT	A201	Category S airspace to Category S FIR TOC Point	10 Mins	VECC	No		Bangladesh	Incompliant
112	AGODA	R472	Category S airspace to Category S FIR TOC Point	50NM	VECC	No		Bangladesh	Incompliant
113	AGODA	R598	Category S airspace to Category S FIR TOC Point	10 Mins	VECC	No		Bangladesh	Incompliant
114	APAGO	B465	Category S airspace to Category S FIR TOC Point	10 Mins	VYYY	No		Bangladesh	Incompliant
115	ATOGA	R472	Category S airspace to Category S FIR TOC Point	50NM	VECC	No		Bangladesh	Incompliant
116	AVLED	G463	Category S airspace to Category S FIR TOC Point	10 Mins	VYYY	No		Bangladesh	Incompliant
117	AVNAK	B209	Category S airspace to Category S FIR TOC Point	10 Mins	VECC	No		Bangladesh	Incompliant
118	AVPOP	L507	Category S airspace to Category S FIR TOC Point	10 Mins	VECC	No	ATC service is provided by Kolkata ACC on route L507 from AVPOP to ESDOT	Bangladesh	Incompliant
119	BEMAK	A462	Category S airspace to Category S FIR TOC Point	50NM	VECC	No		Bangladesh	Incompliant
120	BIPUL	R472	Category S airspace to Category S FIR TOC Point	10 Mins	VECC	No		Bangladesh	Incompliant
121	CHILA	A599	Category S airspace to Category S FIR TOC Point	10 Mins	VYYY	No		Bangladesh	Incompliant
122	ESDOT	L507	Category S airspace to Category S FIR TOC Point	10 Mins	VECC	No	ATC service is provided by Kolkata ACC on route L507 from ESDOT to AVPOP	Bangladesh	Incompliant
123	IBAPA	B593	Category S airspace to Category S FIR TOC Point	10 Mins	VECC	No		Bangladesh	Incompliant
124	NOKAT	B593	Category S airspace to Category S FIR TOC Point	10 Mins	VECC	No		Bangladesh	Incompliant
125	REDAP	R344	Category S airspace to Category S FIR TOC Point	10 Mins	VECC	No		Bangladesh	Incompliant
126	SUMAG	B465	Category S airspace to Category S FIR TOC Point	10 Mins	VECC	No		Bangladesh	Incompliant
127	TEBID	G463	Category S airspace to Category S FIR TOC Point	10 Mins	VECC	No		Bangladesh	Incompliant
128	TEBID	A201	Category S airspace to Category S FIR TOC Point	10 Mins	VECC	No		Bangladesh	Incompliant
129	MIGOP	R598	Category S airspace to Category S FIR TOC Point	11 Mins	VECC	No		Bangladesh	Incompliant
130	VINAD	R599	Category S airspace to Category S FIR TOC Point	12 Mins	VECC	No		Bangladesh	Incompliant
131	ADNUR	B356	Category S airspace to Category S FIR TOC Point	17NM	KHABAROVSK FIR	Yes		DPR Korea	Incompliant
132	BUMEP	B355	Category S airspace to Category S FIR TOC Point	17NM	KHABAROVSK FIR	Yes		DPR Korea	Incompliant
133	RIVAT	G711	Category S airspace to Category S FIR TOC Point	17NM	KHABAROVSK FIR	Yes		DPR Korea	Incompliant
134	NULAR	B467	Category S airspace to Category S FIR TOC Point	17NM	KHABAROVSK FIR	Yes		DPR Korea	Incompliant
135	KANSU	B467	Category S airspace to Category S FIR TOC Point	17NM	INCHEON	Yes		DPR Korea	Incompliant
136	TOMUK	B332	Category S airspace to Category S FIR TOC Point	17NM	SHENYANG FIR	Yes		DPR Korea	Incompliant
137	GOLOT	A345	Category S airspace to Category S FIR TOC Point	17NM	SHENYANG FIR	Yes		DPR Korea	Incompliant
138	VASRO	R224	Category S airspace to Category S FIR TOC Point	27NM	SHENYANG FIR	Yes		DPR Korea	Incompliant
139	DOVOM	G329	Category R/S airspace to Category R FIR TOC Point	30NM	YBBB	YES	Both aircraft to be equipped RNP 4 and ADS-C	Fiji	Compliant
140	UBLIN	A580	Category R/S airspace to Category R FIR TOC Point	30NM	YBBB	YES	Both aircraft to be equipped RNP 4 and ADS-C	Fiji	Compliant

S/No.	TOC Points	ATS Routes	Category of Airspace to FIR TOC Point (Inbound only)	Minimum horizontal separation standard	Inbound Transferring FIR	Auto hand-off surveillance data-sharing overlapping coverage at the TOC point : Yes or No	Remarks/Route Restrictions	Accepting State, FIR	Seamless ANS Plan compliance?
141	RUMIX	B333	Category R/S airspace to Category R FIR TOC Point	30NM	YBBB	YES	Both aircraft to be equipped RNP 4 and ADS-C	Fiji	Compliant
142	VESUN	B580/ B601	Category R/S airspace to Category R FIR TOC Point	30NM	YBBB	YES	Both aircraft to be equipped RNP 4 and ADS-C	Fiji	Compliant
143	TEBUR	B578/ B602	Category R/S airspace to Category R FIR TOC Point	30NM	YBBB	YES	Both aircraft to be equipped RNP 4 and ADS-C	Fiji	Compliant
144	MEPAB	474/ R587/ G58	Category R/S airspace to Category R FIR TOC Point	30NM	YBBB	YES	Both aircraft to be equipped RNP 4 and ADS-C	Fiji	Compliant
145	BODEG	B586	Category R/S airspace to Category R FIR TOC Point	30NM	YBBB	YES	Both aircraft to be equipped RNP 4 and ADS-C	Fiji	Compliant
146	ENOUS	A597	Category R/S airspace to Category R FIR TOC Point	30NM	YBBB	YES	Both aircraft to be equipped RNP 4 and ADS-C	Fiji	Compliant
147	NIPER	B598	Category R/S airspace to Category R FIR TOC Point	30NM	YBBB	YES	Both aircraft to be equipped RNP 4 and ADS-C	Fiji	Compliant
148	AKNAK	R450	Category R/S airspace to Category R FIR TOC Point	30NM	YBBB	YES	Both aircraft to be equipped RNP 4 and ADS-C	Fiji	Compliant
149	LEGOT	R599/ B452	Category R/S airspace to Category R FIR TOC Point	30NM	YBBB	YES	Both aircraft to be equipped RNP 4 and ADS-C	Fiji	Compliant
150	KAPNO	B590	Category R/S airspace to Category R FIR TOC Point	30NM	YBBB	YES	Both aircraft to be equipped RNP 4 and ADS-C	Fiji	Compliant
151	BULRO	G223	Category R/S airspace to Category R FIR TOC Point	30NM	YBBB	YES	Both aircraft to be equipped RNP 4 and ADS-C	Fiji	Compliant
152	UPDIX	A584	Category R/S airspace to Category R FIR TOC Point	30NM	YBBB	YES	Both aircraft to be equipped RNP 4 and ADS-C	Fiji	Compliant
153	LEPKA	B326	Category R/S airspace to Category R FIR TOC Point	30NM	YBBB	YES	Both aircraft to be equipped RNP 4 and ADS-C	Fiji	Compliant
154	KASKU	A578	Category R/S airspace to Category R FIR TOC Point	30NM	YBBB	YES	Both aircraft to be equipped RNP 4 and ADS-C	Fiji	Compliant
155	VAVEE	R332	Category R/S airspace to Category R FIR TOC Point	30NM	KZAK	YES	Both aircraft to be equipped RNP 4 and ADS-C	Fiji	Compliant
156	NIXAM	B326	Category R/S airspace to Category R FIR TOC Point	30NM	KZAK	YES	Both aircraft to be equipped RNP 4 and ADS-C	Fiji	Compliant
157	ARTOP	B474	Category R/S airspace to Category R FIR TOC Point	30NM	KZAK	YES	Both aircraft to be equipped RNP 4 and ADS-C	Fiji	Compliant
158	BOILS	B580	Category R/S airspace to Category R FIR TOC Point	30NM	KZAK	YES	Both aircraft to be equipped RNP 4 and ADS-C	Fiji	Compliant
159	CUFFY	A579	Category R/S airspace to Category R FIR TOC Point	30NM	KZAK	YES	Both aircraft to be equipped RNP 4 and ADS-C	Fiji	Compliant
160	GOMIK	B581	Category R/S airspace to Category R FIR TOC Point	30NM	NZZO	YES	Both aircraft to be equipped RNP 4 and ADS-C	Fiji	Compliant
161	KETUS	A584	Category R/S airspace to Category R FIR TOC Point	30NM	NZZO	YES	Both aircraft to be equipped RNP 4 and ADS-C	Fiji	Compliant
162	OVLAD	B577	Category R/S airspace to Category R FIR TOC Point	30NM	NZZO	YES	Both aircraft to be equipped RNP 4 and ADS-C	Fiji	Compliant
163	IDNIP	R453	Category R/S airspace to Category R FIR TOC Point	30NM	NZZO	YES	Both aircraft to be equipped RNP 4 and ADS-C	Fiji	Compliant
164	DOMAX	A580	Category R/S airspace to Category R FIR TOC Point	30NM	NZZO	YES	Both aircraft to be equipped RNP 4 and ADS-C	Fiji	Compliant
165	BODER	G224	Category R/S airspace to Category R FIR TOC Point	30NM	NZZO	YES	Both aircraft to be equipped RNP 4 and ADS-C	Fiji	Compliant
166	VIMEK	B599	Category R/S airspace to Category R FIR TOC Point	30NM	NZZO	YES	Both aircraft to be equipped RNP 4 and ADS-C	Fiji	Compliant
167	ESDOX	G593/ G223	Category R/S airspace to Category R FIR TOC Point	30NM	NZZO	YES	Both aircraft to be equipped RNP 4 and ADS-C	Fiji	Compliant
168	SOVRA	B450	Category R/S airspace to Category R FIR TOC Point	30NM	NZZO	YES	Both aircraft to be equipped RNP 4 and ADS-C	Fiji	Compliant
169	TAXIS	B598	Category R/S airspace to Category R FIR TOC Point	30NM	NZZO	YES	Both aircraft to be equipped RNP 4 and ADS-C	Fiji	Compliant
170	GURDI	B451/ B578	Category R/S airspace to Category R FIR TOC Point	30NM	NZZO	YES	Both aircraft to be equipped RNP 4 and ADS-C	Fiji	Compliant
171	EGATO	A580	Category R/S airspace to Category R FIR TOC Point	30NM	NZZO	YES	Both aircraft to be equipped RNP 4 and ADS-C	Fiji	Compliant
172	POREN	A578	Category R/S airspace to Category R FIR TOC Point	30NM	NZZO	YES	Both aircraft to be equipped RNP 4 and ADS-C	Fiji	Compliant
173	DOLSI	B450/ B451	Category R/S airspace to Category R FIR TOC Point	30NM	NZZO	YES	Both aircraft to be equipped RNP 4 and ADS-C	Fiji	Compliant
174	TERUX	G224	Category R/S airspace to Category R FIR TOC Point	30NM	NZZO	YES	Both aircraft to be equipped RNP 4 and ADS-C	Fiji	Compliant
175	SADIM	R599	Category R/S airspace to Category R FIR TOC Point	30NM	NZZO	YES	Both aircraft to be equipped RNP 4 and ADS-C	Fiji	Compliant
176	LEKAX	A597	Category R/S airspace to Category R FIR TOC Point	30NM	NZZO	YES	Both aircraft to be equipped RNP 4 and ADS-C	Fiji	Compliant
177	OSVAR	G591	Category R/S airspace to Category R FIR TOC Point	30NM	NZZO	YES	Both aircraft to be equipped RNP 4 and ADS-C	Fiji	Compliant
178	UBDAK	G329	Category R/S airspace to Category R FIR TOC Point	30NM	NZZO	YES	Both aircraft to be equipped RNP 4 and ADS-C	Fiji	Compliant
179	LEBOL	B333	Category R/S airspace to Category R FIR TOC Point	30NM	NZZO	YES	Both aircraft to be equipped RNP 4 and ADS-C	Fiji	Compliant
180	NOMAN	A461	Category S airspace to Category S FIR TOC Point	30NM	Manila	No	1. RNP4 compliant 2. FL290 or above 3. Distance is constant or increasing 4. 50NM/10min applies if all of the conditions above cannot be fulfilled	Hong Kong China	Incompliant
181	SABNO	A583	Category R airspace to Category S FIR TOC Point	30NM	Manila	No	1. RNP4 compliant 2. CPDLC equipped 3. ADS-C equipped 4. FL290 or above 5. Distance is constant or increasing 6. 50NM/10min applies if all of the conditions above cannot be fulfilled	Hong Kong China	Compliant

S/No.	TOC Points	ATS Routes	Category of Airspace to FIR TOC Point (Inbound only)	Minimum horizontal separation standard	Inbound Transferring FIR	Auto hand-off surveillance data-sharing overlapping coverage at the TOC point : Yes or No	Remarks/Route Restrictions	Accepting State, FIR	Seamless ANS Plan compliance?
182	ASOBA	M772	Category R airspace to Category S FIR TOC Point	10 Mins	Manila	No	If preceding aircraft is faster, can apply MNT to reduce the longitudinal separation	Hong Kong China	Incompliant
183	ELATO	A1	Category S airspace to Category S FIR TOC Point	20NM	Taipei	Yes	40NM if succeeding aircraft is faster	Hong Kong China	Incompliant
184	KAPLI	G86	Category S airspace to Category S FIR TOC Point	20NM	Taipei	Yes	40NM if succeeding aircraft is faster	Hong Kong China	Incompliant
185	TAMOT	B330	Category S airspace to Category S FIR TOC Point	30NM (joining different routes within HK FIR) 50NM (others)	Guangzhou	Yes		Hong Kong China	Incompliant
186	DOTMI	A470	Category S airspace to Category S FIR TOC Point	30NM (one landing at VHHH or joining different routes within HK FIR) 10 min with MNT (others)	Shanghai / Xiamen / Shantou ATCU	No		Hong Kong China	Incompliant
187	LELIM	M503	Category S airspace to Category S FIR TOC Point	7 Mins	Shanghai	No		Hong Kong China	Incompliant
188	SIERA	R473	Category S airspace to Category S FIR TOC Point	16NM (one or both aircraft is/are landing at VHHH) 20NM (traffic from Zhuhai Approach) 30NM (joining different routes within HK FIR) 10 Mins MNT (others)	Guangzhou / Zhuhai Approach	No		Hong Kong China	Incompliant
189	SIKOU	A202	Category S airspace to Category S FIR TOC Point	20NM	Sanya FIR / Zhangjiang ATCU	Yes	40NM if succeeding aircraft is faster	Hong Kong China	Incompliant
190	IKELA	A1/P901	Category S airspace to Category S FIR TOC Point	20NM	Sanya FIR	Yes	40NM if succeeding aircraft is faster	Hong Kong China	Incompliant
191	DOSUT	M771	Category S airspace to Category S FIR TOC Point	50NM	Sanya FIR	Yes	Distance is constant or increasing	Hong Kong China	Incompliant
192	NUSRU	Q23	Category S airspace to Category S FIR TOC Point	20NM	MUMBAI			India, Chennai	Compliant
193	VIKAS	Q9	Category S airspace to Category S FIR TOC Point	30NM*/ 50NM	MUMBAI		* Subject to conditions and aircraft equipage	India, Chennai	Incompliant
194	GULUP	Q13	Category S airspace to Category S FIR TOC Point	30NM*/ 50NM	MUMBAI		* Subject to conditions and aircraft equipage	India, Chennai	Incompliant
195	AGELA	N571	Category S airspace to Category S FIR TOC Point	30NM*/50NM*/ 10 MINUTES	MUMBAI		* Subject to conditions and aircraft equipage	India, Chennai	Incompliant
196	LUTGU	L518	Category S airspace to Category S FIR TOC Point	50NM*/ 10 MINUTES	MUMBAI		* Subject to conditions and aircraft equipage	India, Chennai	Incompliant
197	OMDEV	T9	Category S airspace to Category S FIR TOC Point	50NM*/ 10 MINUTES	MUMBAI		* Subject to conditions and aircraft equipage	India, Chennai	Incompliant
198	OKILA	P574	Category S airspace to Category S FIR TOC Point	30NM*/ 50NM*/ 10 MINUTES	MUMBAI		* Subject to conditions and aircraft equipage	India, Chennai	Incompliant
199	EPKOS	W67	Category S airspace to Category S FIR TOC Point	30NM*/ 50NM*/ 10 MINUTES	MUMBAI		* Subject to conditions and aircraft equipage	India, Chennai	Incompliant
200	BBM	R458	Category S airspace to Category S FIR TOC Point	30NM*/ 50NM*/ 10 MINUTES	MUMBAI		* Subject to conditions and aircraft equipage	India, Chennai	Incompliant
201	GODEP	W28	Category S airspace to Category S FIR TOC Point	30NM*/ 50NM*/ 10 MINUTES	MUMBAI		* Subject to conditions and aircraft equipage	India, Chennai	Incompliant
202	IGMAR	B211	Category S airspace to Category S FIR TOC Point	30NM*/ 50NM*/ 10 MINUTES	MUMBAI		* Subject to conditions and aircraft equipage	India, Chennai	Incompliant
203	MEPIP	W136	Category S airspace to Category S FIR TOC Point	10 MINUTES	MUMBAI			India, Chennai	Incompliant
204	LUTGU	W19	Category S airspace to Category S FIR TOC Point	40NM*/10 MINUTES	MUMBAI		* Subject to conditions and aircraft equipage	India, Chennai	Incompliant
205	BUSBO	W20	Category S airspace to Category S FIR TOC Point	40NM*/10 MINUTES	MUMBAI			India, Chennai	Incompliant
206	BUSBO	W27	Category S airspace to Category S FIR TOC Point	10 MINUTES	MUMBAI			India, Chennai	Incompliant
207	SUDUM	W38	Category S airspace to Category S FIR TOC Point	10 MINUTES	MUMBAI			India, Chennai	Incompliant
208	MELAX	W218, W18	Category S airspace to Category S FIR TOC Point	10 MINUTES	MUMBAI			India, Chennai	Incompliant
209	MELAX/COMMON BOUNDARY	Q27, J42	Category S airspace to Category S FIR TOC Point	10 MINUTES	MUMBAI			India, Chennai	Incompliant
210	GUROG	J64	Category S airspace to Category S FIR TOC Point	10 MINUTES	MUMBAI			India, Chennai	Incompliant
211	COMMON BOUNDARY	J41, J36, J3	Category S airspace to Category S FIR TOC Point	10 MINUTES	MUMBAI			India, Chennai	Incompliant
212	BUSBO	Q28	Category S airspace to Category S FIR TOC Point	10 MINUTES	MUMBAI			India, Chennai	Incompliant
213	TANGE	J67	Category S airspace to Category S FIR TOC Point	10 MINUTES	MUMBAI			India, Chennai	Incompliant
214	COMMON BOUNDARY	J29 (CDR 3 Ro	Category S airspace to Category S FIR TOC Point	10 MINUTES	MUMBAI			India, Chennai	Incompliant
215	AGELA	J104	Category S airspace to Category S FIR TOC Point	10 MINUTES	MUMBAI			India, Chennai	Incompliant
216	UXOGO	J65	Category S airspace to Category S FIR TOC Point	10 MINUTES	MUMBAI			India, Chennai	Incompliant
217	PEGBO	J5	Category S airspace to Category S FIR TOC Point	50NM*/10 MINUTES	MUMBAI		* Subject to conditions and aircraft equipage	India, Chennai	Incompliant
218	NODAX	Q11	Category S airspace to Category S FIR TOC Point	20NM**	KOLKATA		** Trial operations	India, Chennai	Compliant
219	MEPIP	W136, J4	Category S airspace to Category S FIR TOC Point	30NM*/ 10 MINUTES	KOLKATA		* Subject to conditions and aircraft equipage	India, Chennai	Incompliant
220	SAPNU	W41	Category S airspace to Category S FIR TOC Point	30NM*/ 10 MINUTES	KOLKATA		* Subject to conditions and aircraft equipage	India, Chennai	Incompliant
221	AKSAN	W29	Category S airspace to Category S FIR TOC Point	30NM*/ 10 MINUTES	KOLKATA		* Subject to conditions and aircraft equipage	India, Chennai	Incompliant
222	BITEM (above FL255)	W47	Category S airspace to Category S FIR TOC Point	30NM*/ 10 MINUTES	KOLKATA		* Subject to conditions and aircraft equipage	India, Chennai	Incompliant
223	VIPAT (above FL255)	V009	Category S airspace to Category S FIR TOC Point	30NM*/ 10 MINUTES	KOLKATA		* Subject to conditions and aircraft equipage	India, Chennai	Incompliant
224	XOPOX (above FL255)	A465	Category S airspace to Category S FIR TOC Point	30NM*/ 10 MINUTES	KOLKATA		* Subject to conditions and aircraft equipage	India, Chennai	Incompliant
225	MANPU	N877	Category R/S airspace to Category R FIR TOC Point	30NM*/50NM*/80NM*/ 10 MINUTES	KOLKATA		* Subject to conditions and aircraft equipage	India, Chennai	Incompliant
226	BASUR	P570	Category S airspace to Category S FIR TOC Point	30NM*/50NM*/10 MINUTES	COLOMBO		* Subject to conditions and aircraft equipage	India, Chennai	Incompliant
227	ATETA	M300	Category S airspace to Category S FIR TOC Point	50NM*/ 10 MINUTES	COLOMBO		* Subject to conditions and aircraft equipage	India, Chennai	Incompliant
228	IDIBI	G325	Category S airspace to Category S FIR TOC Point	10 MINUTES	COLOMBO			India, Chennai	Incompliant

S/No.	TOC Points	ATS Routes	Category of Airspace to FIR TOC Point (Inbound only)	Minimum horizontal separation standard	Inbound Transferring FIR	Auto hand-off surveillance data-sharing overlapping coverage at the TOC point : Yes or No	Remarks/Route Restrictions	Accepting State, FIR	Seamless ANS Plan compliance?
229	SAGOR	A465	Category S airspace to Category S FIR TOC Point	30NM*/10 MINUTES	COLOMBO		* Subject to conditions and aircraft equipage	India, Chennai	Incompliant
230	DEMON	R461	Category S airspace to Category S FIR TOC Point	30NM*/ 50NM*/10 MINUTES	COLOMBO		* Subject to conditions and aircraft equipage	India, Chennai	Incompliant
231	ANODA	UL425	Category R airspace to Category S FIR TOC Point	50NM* / 10 MINUTES	MUMBAI		* Subject to conditions and aircraft equipage	India, Chennai	Incompliant
232	OSUPI	T5	Category R airspace to Category S FIR TOC Point	50NM* / 10 MINUTES	MUMBAI		* Subject to conditions and aircraft equipage	India, Chennai	Incompliant
233	BEDIL	L875	Category R airspace to Category S FIR TOC Point	50NM* / 10 MINUTES	MUMBAI		* Subject to conditions and aircraft equipage	India, Chennai	Incompliant
234	KAKIB	N563	Category R airspace to Category S FIR TOC Point	50NM* / 10 MINUTES	MUMBAI		* Subject to conditions and aircraft equipage	India, Chennai	Incompliant
235	POMAN	P570	Category R airspace to Category S FIR TOC Point	30NM* / 50NM* / 10 MINUTES	MUMBAI		* Subject to conditions and aircraft equipage	India, Chennai	Incompliant
236	VASTU	M300	Category R airspace to Category S FIR TOC Point	30NM* / 50NM* / 10 MINUTES	MUMBAI		* Subject to conditions and aircraft equipage	India, Chennai	Incompliant
237	LULDA	P762	Category R airspace to Category S FIR TOC Point	50NM* / 80NM* / 10 MINUTES	YANGON		* Subject to conditions and aircraft equipage	India, Chennai	Incompliant
238	VATLA	W111	Category R/S airspace to Category R FIR TOC Point	15 MINUTES	KOLKATA			India, Chennai	Incompliant
239	KIBUD	W112	Category R/S airspace to Category R FIR TOC Point	15 MINUTES	KOLKATA			India, Chennai	Incompliant
240	MEMAK	N563	Category R/S airspace to Category R FIR TOC Point	50NM* / 80NM* / 10 MINUTES	JAKARTA		* Subject to conditions and aircraft equipage	India, Chennai	Incompliant
241	DUGOS	P762	Category R/S airspace to Category R FIR TOC Point	50NM* / 80NM* / 10 MINUTES	COLOMBO		* Subject to conditions and aircraft equipage	India, Chennai	Incompliant
242	SULTO	L645	Category R/S airspace to Category R FIR TOC Point	50NM* / 10 MINUTES	COLOMBO		* Subject to conditions and aircraft equipage	India, Chennai	Incompliant
243	DUGOS	L896, N564	Category R/S airspace to Category R FIR TOC Point	10 MINUTES	COLOMBO			India, Chennai	Incompliant
244	IGOGU	N571	Category R/S airspace to Category R FIR TOC Point	50NM* / 10 MINUTES	KUALA LUMPUR		* Subject to conditions and aircraft equipage	India, Chennai	Incompliant
245	IGREX	P628	Category R/S airspace to Category R FIR TOC Point	50NM* / 10 MINUTES	KUALA LUMPUR		* Subject to conditions and aircraft equipage	India, Chennai	Incompliant
246	NOPEK	P574	Category R/S airspace to Category R FIR TOC Point	50NM* / 10 MINUTES	KUALA LUMPUR		* Subject to conditions and aircraft equipage	India, Chennai	Incompliant
247	ANOKO	B466	Category R/S airspace to Category R FIR TOC Point	10 MINUTES	KUALA LUMPUR			India, Chennai	Incompliant
248	POXOD	R329	Category R/S airspace to Category R FIR TOC Point	15 MINUTES	MALE			India, Chennai	Incompliant
249	OSERA	R457	Category R/S airspace to Category R FIR TOC Point	10 MINUTES	MALE			India, Chennai	Incompliant
250	TELAR	L899	Category R/S airspace to Category R FIR TOC Point	10 MINUTES	MALE			India, Chennai	Incompliant
251	MEPIP	Q17	Category S airspace to Category S FIR TOC Point	20NM	KOLKATA		* Subject to conditions and aircraft equipage	India, Chennai	Compliant
252	BIDEX	L510	Category R/S airspace to Category R FIR TOC Point	50NM* / 10 MINUTES	KOLKATA		* Subject to conditions and aircraft equipage	India, Chennai	Incompliant
253	LIBDI	L759	Category R/S airspace to Category R FIR TOC Point	50NM* / 10 MINUTES	KOLKATA		* Subject to conditions and aircraft equipage	India, Chennai	Incompliant
254	SAMAK	L645	Category R/S airspace to Category R FIR TOC Point	50NM* / 10 MINUTES	KUALA LUMPUR		* Subject to conditions and aircraft equipage	India, Chennai	Incompliant
255	UDULO	W17,W15	Category S airspace to Category S FIR TOC Point	30NM*/ 50NM* / 10 MINUTES	MUMBAI		* Subject to conditions and aircraft equipage	India, Chennai	Incompliant
256	MIPAK	L759	Category R airspace to Category S FIR TOC Point	50NM* / 80NM* / 10 MINUTES	YANGON		* Subject to conditions and aircraft equipage	India, Chennai	Incompliant
257	COMMON BOUNDARY	V78,W126,W12	Category S airspace to Category S FIR TOC Point	10 MINUTES	MUMBAI			India, Chennai	Incompliant
258	ONISA	L626	Category S airspace to Category S FIR TOC Point	10 MINUTES	KATHMANDU			India, Delhi	Incompliant
259	FIR Boundary	J1(CDR-2 route)	Category S airspace to Category S FIR TOC Point	50 NM	KOLKATA			India, Delhi	Incompliant
260	LKN	20 (CDR-2 route)	Category S airspace to Category S FIR TOC Point	50NM	KOLKATA			India, Delhi	Incompliant
261	LKN	Q18	Category S airspace to Category S FIR TOC Point	20 NM**/40NM*/10 MINUTES	KOLKATA		* Subject to conditions and aircraft equipage; ** Trial operations	India, Delhi	Incompliant
262	LKN	B345	Category S airspace to Category S FIR TOC Point	40NM* / 10 MINUTES	KOLKATA		* Subject to conditions and aircraft equipage	India, Delhi	Incompliant
263	LKN	W85	Category S airspace to Category S FIR TOC Point	40NM* / 10 MINUTES	KOLKATA		* Subject to conditions and aircraft equipage	India, Delhi	Incompliant
264	FIR Boundary	M875, L759,	Category S airspace to Category S FIR TOC Point	50NM* / 10 MINUTES	KOLKATA		* Subject to conditions and aircraft equipage	India, Delhi	Incompliant
265	LKN	A201	Category S airspace to Category S FIR TOC Point	20 NM**/ 40NM* / 10MINUTES	KOLKATA		* Subject to conditions and aircraft equipage; ** Trial operations	India, Delhi	Incompliant
266	LKN	R460, R594	Category S airspace to Category S FIR TOC Point	20 NM**/ 40NM* / 50NM*/ 10MINUTES	KOLKATA		* Subject to conditions and aircraft equipage; ** Trial operations	India, Delhi	Incompliant
267	FIR Boundary	J48, J58, J98 (Category S airspace to Category S FIR TOC Point	10 MINUTES	KOLKATA			India, Delhi	Incompliant
268	LKN	9 (CDR-2 Route)	Category S airspace to Category S FIR TOC Point	10 MINUTES	KOLKATA			India, Delhi	Incompliant
269	BUKLO	Q24	Category S airspace to Category S FIR TOC Point	20 NM*	MUMBAI		* Subject to conditions and aircraft equipage	India, Delhi	Compliant
270	FIR Boundary	Q3	Category S airspace to Category S FIR TOC Point	50 NM	MUMBAI			India, Delhi	Incompliant
271	FIR Boundary	1 (CDR-2 route)	Category S airspace to Category S FIR TOC Point	50 NM	MUMBAI			India, Delhi	Incompliant
272	RUPEN	Q1	Category S airspace to Category S FIR TOC Point	20NM* / 50 NM	MUMBAI		* Subject to conditions and aircraft equipage	India, Delhi	Incompliant
273	BUKLO	W20	Category S airspace to Category S FIR TOC Point	40NM* / 10 MINUTES	MUMBAI		* Subject to conditions and aircraft equipage	India, Delhi	Incompliant
274	IBANI	P628	Category S airspace to Category S FIR TOC Point	50NM* / 10 MINUTES	MUMBAI		* Subject to conditions and aircraft equipage	India, Delhi	Incompliant
275	FIR Boundary	A347	Category S airspace to Category S FIR TOC Point	80 NM / 10 MINUTES	MUMBAI			India, Delhi	Incompliant
276	EPDAD	W122N	Category S airspace to Category S FIR TOC Point	10 MINUTES	MUMBAI			India, Delhi	Incompliant
277	BILAN	W10	Category S airspace to Category S FIR TOC Point	10 MINUTES	MUMBAI			India, Delhi	Incompliant
278	UUD	W58	Category S airspace to Category S FIR TOC Point	10 MINUTES	MUMBAI			India, Delhi	Incompliant
279	FIR Boundary	0, J62, Z9 (CDR-2 route)	Category S airspace to Category S FIR TOC Point	10 MINUTES	MUMBAI			India, Delhi	Incompliant
280	POVOS	Z8 (CDR-2 Route)	Category S airspace to Category S FIR TOC Point	10 MINUTES	MUMBAI			India, Delhi	Incompliant
281	IBANI	Z2 (CDR-2 Route)	Category S airspace to Category S FIR TOC Point	10 MINUTES	MUMBAI			India, Delhi	Incompliant

S/No.	TOC Points	ATS Routes	Category of Airspace to FIR TOC Point (Inbound only)	Minimum horizontal separation standard	Inbound Transferring FIR	Auto hand-off surveillance data-sharing overlapping coverage at the TOC point : Yes or No	Remarks/Route Restrictions	Accepting State, FIR	Seamless ANS Plan compliance?
282	SEKDO	IS(CDR-2 Rout	Category S airspace to Category S FIR TOC Point	20 NM	MUMBAI			India, Delhi	Compliant
283	VKIT	P628	Category S airspace to Category S FIR TOC Point	50NM* / 10 MINUTES	LAHORE		* Subject to conditions and aircraft equipage	India, Delhi	Incompliant
284	MERUN	L333, G452	Category S airspace to Category S FIR TOC Point	50NM* / 10 MINUTES	LAHORE		* Subject to conditions and aircraft equipage	India, Delhi	Incompliant
285	GUGAL	M875	Category S airspace to Category S FIR TOC Point	50NM* / 10 MINUTES	LAHORE		* Subject to conditions and aircraft equipage	India, Delhi	Incompliant
286	SULOM	L509, M890	Category S airspace to Category S FIR TOC Point	50NM* / 10 MINUTES	LAHORE		* Subject to conditions and aircraft equipage	India, Delhi	Incompliant
287	SULOM	A466	Category S airspace to Category S FIR TOC Point	50NM* / 5 MINUTES* / 10 MINUTES	LAHORE		* Subject to conditions and aircraft equipage	India, Delhi	Incompliant
288	RABAN	A456	Category S airspace to Category S FIR TOC Point	10 MINUTES	LAHORE			India, Delhi	Incompliant
289	BEMAK	A462	Category R airspace to Category S FIR TOC Point	50NM* MNT	DHAKA		* Subject to conditions & aircraft equipage	India, Kolkata	Compliant
290	NOKAT	B593	Category R airspace to Category S FIR TOC Point	10 minutes	DHAKA			India, Kolkata	Incompliant
291	SUMAG	B465	Category R airspace to Category S FIR TOC Point	10 minutes	DHAKA			India, Kolkata	Incompliant
292	AGODA	R472	Category R airspace to Category S FIR TOC Point	50NM* MNT	DHAKA		* Subject to conditions & aircraft equipage	India, Kolkata	Compliant
293	ATOGA	R472	Category R airspace to Category S FIR TOC Point	50NM* MNT	DHAKA		* Subject to conditions & aircraft equipage	India, Kolkata	Compliant
294	IBAPA	B593	Category R airspace to Category S FIR TOC Point	10minutes	DHAKA			India, Kolkata	Incompliant
295	AVNAK	B209	Category R airspace to Category S FIR TOC Point	10 minutes	DHAKA			India, Kolkata	Incompliant
296	VANTU	R598	Category R airspace to Category S FIR TOC Point	10 minutes	DHAKA			India, Kolkata	Incompliant
297	RENDAP	R344	Category R airspace to Category S FIR TOC Point	10 minutes	DHAKA			India, Kolkata	Incompliant
298	TEBID	A201	Category R airspace to Category S FIR TOC Point	10 minutes	DHAKA			India, Kolkata	Incompliant
299	AAT	A201	Category R airspace to Category S FIR TOC Point	10 minutes	DHAKA			India, Kolkata	Incompliant
300	TEBID	G463	Category R airspace to Category S FIR TOC Point	10 minutes	DHAKA			India, Kolkata	Incompliant
301	KABEM	R325	Category R airspace to Category S FIR TOC Point	10 minutes	KATHMANDU			India, Kolkata	Incompliant
302	ROMEO	R581	Category R airspace to Category S FIR TOC Point	10 minutes	KATHMANDU			India, Kolkata	Incompliant
303	METOM	G348	Category R airspace to Category S FIR TOC Point	10 minutes	KATHMANDU			India, Kolkata	Incompliant
304	PARSA	G598	Category R airspace to Category S FIR TOC Point	10 minutes	KATHMANDU			India, Kolkata	Incompliant
305	OMUPA	G590	Category R airspace to Category S FIR TOC Point	10 minutes	KATHMANDU			India, Kolkata	Incompliant
306	LUMBI	B345	Category R airspace to Category S FIR TOC Point	10 minutes	KATHMANDU			India, Kolkata	Incompliant
307	BIRAT	R344	Category R airspace to Category S FIR TOC Point	10 minutes	KATHMANDU			India, Kolkata	Incompliant
308	BIRAT	A467	Category R airspace to Category S FIR TOC Point	10 minutes	KATHMANDU			India, Kolkata	Incompliant
309	ROMEO	G463	Category R airspace to Category S FIR TOC Point	10 minutes	KATHMANDU			India, Kolkata	Incompliant
310	LALEK	G335	Category R airspace to Category S FIR TOC Point	10 minutes	KATHMANDU			India, Kolkata	Incompliant
311	BIPOB	G336	Category R airspace to Category S FIR TOC Point	10 minutes	KATHMANDU			India, Kolkata	Incompliant
312	SAGOD	N895	Category R/S airspace to Category R FIR TOC Point	10 minutes/80NM*/50NM* RHSM MNT	YANGOON		* Subject to conditions & aircraft equipage	India, Kolkata	Incompliant
313	SAGOD	G472	Category R/S airspace to Category R FIR TOC Point	10 minutes	YANGOON			India, Kolkata	Incompliant
314	MEPEL	M770	Category R/S airspace to Category R FIR TOC Point	10 minutes/80NM*/50NM* RHSM MNT	YANGOON		* Subject to conditions & aircraft equipage	India, Kolkata	Incompliant
315	CHILA	A599	Category R airspace to Category S FIR TOC Point	10 minutes	YANGOON			India, Kolkata	Incompliant
316	APAGO	B465	Category R airspace to Category S FIR TOC Point	10 minutes	YANGOON			India, Kolkata	Incompliant
317	ANSOS	A201	Category R airspace to Category S FIR TOC Point	10 minutes	YANGOON			India, Kolkata	Incompliant
318	TEBOV	L507	Category R airspace to Category S FIR TOC Point	10 minutes/80NM*/50NM* RHSM MNT	YANGOON		* Subject to conditions & aircraft equipage	India, Kolkata	Incompliant
319	IBITA	P646	Category R/S airspace to Category R FIR TOC Point	10 minutes/80NM*/50NM* RHSM MNT	YANGOON		* Subject to conditions & aircraft equipage	India, Kolkata	Incompliant
320	BORBU	L524	Category R/S airspace to Category R FIR TOC Point	10 minutes/80NM*/50NM* RHSM MNT	YANGOON		* Subject to conditions & aircraft equipage	India, Kolkata	Incompliant
321	RINDA	L301	Category R/S airspace to Category R FIR TOC Point	10 minutes/80NM*/50NM* RHSM MNT	YANGOON		* Subject to conditions & aircraft equipage	India, Kolkata	Incompliant
322	MEPIP	W136	Category S airspace to Category S FIR TOC Point	10 minutes/80NM*/50NM* RHSM MNT	CHENNAI		* Subject to conditions & aircraft equipage	India, Kolkata	Incompliant
323	MEPIP	J4	Category S airspace to Category S FIR TOC Point	10 minutes/30NM* MNT	CHENNAI		* Subject to conditions & aircraft equipage	India, Kolkata	Incompliant
324	MEPIP	Q17	Category S airspace to Category S FIR TOC Point	10 minutes/30NM*/20NM* MNT	CHENNAI		* Subject to conditions & aircraft equipage	India, Kolkata	Incompliant
325	MEPIP	V75	Category S airspace to Category S FIR TOC Point	10 minutes/30NM* MNT	CHENNAI		* Subject to conditions & aircraft equipage	India, Kolkata	Incompliant
326	SAPNU	W41	Category S airspace to Category S FIR TOC Point	10 minutes/30NM* MNT	CHENNAI		* Subject to conditions & aircraft equipage	India, Kolkata	Incompliant
327	AKSAN	W29	Category S airspace to Category S FIR TOC Point	10 minutes/30NM* MNT	CHENNAI		* Subject to conditions & aircraft equipage	India, Kolkata	Incompliant
328	BITEM	W47	Category S airspace to Category S FIR TOC Point	10 minutes/30NM* MNT	CHENNAI		* Subject to conditions & aircraft equipage	India, Kolkata	Incompliant
329	VIPAT	V009	Category S airspace to Category S FIR TOC Point	10 minutes/30NM* MNT	CHENNAI		* Subject to conditions & aircraft equipage	India, Kolkata	Incompliant
330	XOPOX	A465	Category S airspace to Category S FIR TOC Point	10 minutes/30NM* MNT	CHENNAI		* Subject to conditions & aircraft equipage	India, Kolkata	Incompliant
331	NODAX	Q11	Category S airspace to Category S FIR TOC Point	10 minutes/50NM*/30NM*/20NM* MNT	CHENNAI		* Subject to conditions & aircraft equipage	India, Kolkata	Incompliant
332	SUPLU	Q10	Category S airspace to Category S FIR TOC Point	10 minutes/50NM*/30NM*/20NM* MNT	CHENNAI		* Subject to conditions & aircraft equipage	India, Kolkata	Incompliant
333	MANPU	N877	Category R/S airspace to Category R FIR TOC Point	10 minutes	CHENNAI OCC			India, Kolkata	Incompliant
334	BIDEX	L510	Category R/S airspace to Category R FIR TOC Point	10 minutes	CHENNAI OCC			India, Kolkata	Incompliant
335	VATLA	P628	Category R/S airspace to Category R FIR TOC Point	10 minutes	CHENNAI OCC			India, Kolkata	Incompliant
336	VATLA	W111	Category R/S airspace to Category R FIR TOC Point	10 minutes	CHENNAI OCC			India, Kolkata	Incompliant
337	KIBUD	W112	Category R/S airspace to Category R FIR TOC Point	10 minutes	CHENNAI OCC			India, Kolkata	Incompliant
338	LIBDI	L759	Category R/S airspace to Category R FIR TOC Point	10 minutes	CHENNAI OCC			India, Kolkata	Incompliant
339	ASOPO	A791	Category S airspace to Category S FIR TOC Point	10minutes/50NM*/30NM*	NAGPUR		* Subject to conditions & aircraft equipage	India, Kolkata	Incompliant
340	NITAG	Q19	Category S airspace to Category S FIR TOC Point	10 minutes/30NM*/20NM* MNT	NAGPUR		* Subject to conditions & aircraft equipage	India, Kolkata	Incompliant
341	OSVAS	Q20	Category S airspace to Category S FIR TOC Point	10 minutes/30NM*/20NM* MNT	NAGPUR		* Subject to conditions & aircraft equipage	India, Kolkata	Incompliant
342	TEGIG	G450	Category S airspace to Category S FIR TOC Point	10 minutes/30NM*	NAGPUR		* Subject to conditions & aircraft equipage	India, Kolkata	Incompliant
343	VEMPI	W140	Category S airspace to Category S FIR TOC Point	10 minutes/30NM*	NAGPUR		* Subject to conditions & aircraft equipage	India, Kolkata	Incompliant
344	SADEV	J67	Category S airspace to Category S FIR TOC Point	10 minutes/30NM*	NAGPUR		* Subject to conditions & aircraft equipage	India, Kolkata	Incompliant

S/No.	TOC Points	ATS Routes	Category of Airspace to FIR TOC Point (Inbound only)	Minimum horizontal separation standard	Inbound Transferring FIR	Auto hand-off surveillance data-sharing overlapping coverage at the TOC point : Yes or No	Remarks/Route Restrictions	Accepting State, FIR	Seamless ANS Plan compliance?
345	SADEV	Q16	Category S airspace to Category S FIR TOC Point	10 minutes/30NM*/20NM* MNT	NAGPUR		* Subject to conditions & aircraft equipage	India, Kolkata	Incompliant
346	OSVAS	Z14	Category S airspace to Category S FIR TOC Point	10minutes/50NM* RHSM/30NM* MNT	NAGPUR		* Subject to conditions & aircraft equipage	India, Kolkata	Incompliant
347	TEGIG	W108	Category S airspace to Category S FIR TOC Point	10 minutes/30NM*	NAGPUR		* Subject to conditions & aircraft equipage	India, Kolkata	Incompliant
348	SADEV	N895	Category S airspace to Category S FIR TOC Point	10minutes/50NM* RHSM/30NM* MNT	NAGPUR		* Subject to conditions & aircraft equipage	India, Kolkata	Incompliant
349	DOVIR	L524	Category S airspace to Category S FIR TOC Point	10minutes/50NM* RHSM/30NM* MNT	NAGPUR		* Subject to conditions & aircraft equipage	India, Kolkata	Incompliant
350	LXENA	N877	Category S airspace to Category S FIR TOC Point	10minutes/50NM* RHSM/30NM* MNT	NAGPUR		* Subject to conditions & aircraft equipage	India, Kolkata	Incompliant
351	MEPIP	L301	Category S airspace to Category S FIR TOC Point	10minutes/50NM* RHSM/30NM* MNT	NAGPUR		* Subject to conditions & aircraft equipage	India, Kolkata	Incompliant
352	AKSIX	V15	Category S airspace to Category S FIR TOC Point	10 minutes/30NM*	NAGPUR		* Subject to conditions & aircraft equipage	India, Kolkata	Incompliant
353	ASOPO	P628	Category S airspace to Category S FIR TOC Point	10minutes/50NM* RHSM/30NM* MNT	NAGPUR		* Subject to conditions & aircraft equipage	India, Kolkata	Incompliant
354	ODUMI	T1	Category S airspace to Category S FIR TOC Point	10 minutes/30NM*	NAGPUR		* Subject to conditions & aircraft equipage	India, Kolkata	Incompliant
355	RUXAL	Q29	Category S airspace to Category S FIR TOC Point	10 minutes/30NM*	NAGPUR		* Subject to conditions & aircraft equipage	India, Kolkata	Incompliant
356	TEGIG	L510	Category S airspace to Category S FIR TOC Point	10minutes/50NM RHSM*/30NM MNT*	NAGPUR		* Subject to conditions & aircraft equipage	India, Kolkata	Incompliant
357	RUXAL	V39	Category S airspace to Category S FIR TOC Point	10 minutes/30NM*	NAGPUR		* Subject to conditions & aircraft equipage	India, Kolkata	Incompliant
358	KKJ	G590	Category S airspace to Category S FIR TOC Point	10 minutes	NAGPUR			India, Kolkata	Incompliant
359	KKJ	W40	Category S airspace to Category S FIR TOC Point	10 minutes	NAGPUR			India, Kolkata	Incompliant
360	KKJ	W68	Category S airspace to Category S FIR TOC Point	10 minutes	NAGPUR			India, Kolkata	Incompliant
361	KKJ	W139	Category S airspace to Category S FIR TOC Point	10 minutes	NAGPUR			India, Kolkata	Incompliant
362	JIB	W99	Category S airspace to Category S FIR TOC Point	10 minutes	NAGPUR			India, Kolkata	Incompliant
363	KKJ	Q14	Category S airspace to Category S FIR TOC Point	20NM*	NAGPUR		* Subject to conditions & aircraft equipage	India, Kolkata	Compliant
364	KKJ	Q15	Category S airspace to Category S FIR TOC Point	20NM*	NAGPUR		* Subject to conditions & aircraft equipage	India, Kolkata	Compliant
365	AKSIX	V15	Category S airspace to Category S FIR TOC Point	10 minutes	NAGPUR			India, Kolkata	Incompliant
366	SADEV	G472	Category S airspace to Category S FIR TOC Point	10 minutes/30NM*	NAGPUR		* Subject to conditions & aircraft equipage	India, Kolkata	Incompliant
367	LXENA	V92	Category S airspace to Category S FIR TOC Point	10 minutes/30NM*	NAGPUR		* Subject to conditions & aircraft equipage	India, Kolkata	Incompliant
368	KALRI	V73	Category S airspace to Category S FIR TOC Point	10 minutes/30NM*	NAGPUR		* Subject to conditions & aircraft equipage	India, Kolkata	Incompliant
369	DOVIR	136(below FL2	Category S airspace to Category S FIR TOC Point	10 minutes/30NM*	NAGPUR		* Subject to conditions & aircraft equipage	India, Kolkata	Incompliant
370	VEKRA	4(below FL255	Category S airspace to Category S FIR TOC Point	10 minutes/30NM*	NAGPUR		* Subject to conditions & aircraft equipage	India, Kolkata	Incompliant
371	KALRI	75(below FL25	Category S airspace to Category S FIR TOC Point	10 minutes/30NM*	NAGPUR		* Subject to conditions & aircraft equipage	India, Kolkata	Incompliant
372	ASOPO	W66	Category S airspace to Category S FIR TOC Point	10 minutes	VARANASI			India, Kolkata	Incompliant
373	BEGUM	W138	Category S airspace to Category S FIR TOC Point	10 minutes	VARANASI			India, Kolkata	Incompliant
374	IBUDA	L759	Category S airspace to Category S FIR TOC Point	10 minutes/50NM*	VARANASI		* Subject to conditions & aircraft equipage	India, Kolkata	Incompliant
375	IBUDA	W49	Category S airspace to Category S FIR TOC Point	10 minutes	VARANASI			India, Kolkata	Incompliant
376	FIR BOUNDARY	W86	Category S airspace to Category S FIR TOC Point	10 minutes	VARANASI			India, Kolkata	Incompliant
377	LAPAN	W50	Category S airspace to Category S FIR TOC Point	10 minutes	VARANASI			India, Kolkata	Incompliant
378	LAPAN	M875	Category S airspace to Category S FIR TOC Point	10 minutes/ 50NM*	VARANASI		* Subject to conditions & aircraft equipage	India, Kolkata	Incompliant
379	LAPAN	B209	Category S airspace to Category S FIR TOC Point	10 minutes	VARANASI			India, Kolkata	Incompliant
380	ATALI	W109	Category S airspace to Category S FIR TOC Point	10 minutes	VARANASI			India, Kolkata	Incompliant
381	FIR BOUNDARY	W73	Category S airspace to Category S FIR TOC Point	10 minutes	VARANASI			India, Kolkata	Incompliant
382	PUPAM	P646	Category S airspace to Category S FIR TOC Point	10 minutes	VARANASI			India, Kolkata	Incompliant
383	GGC	R460	Category S airspace to Category S FIR TOC Point	10 minutes/ 20NM*	VARANASI		* Subject to conditions & aircraft equipage	India, Kolkata	Incompliant
384	PPT	A201	Category S airspace to Category S FIR TOC Point	10 minutes/ 20NM*	VARANASI		* Subject to conditions & aircraft equipage	India, Kolkata	Incompliant
385	PPT	Q18	Category S airspace to Category S FIR TOC Point	10 minutes/ 20NM*	VARANASI		* Subject to conditions & aircraft equipage	India, Kolkata	Incompliant
386	FIR BOUNDARY	Z13	Category S airspace to Category S FIR TOC Point	10minutes/50NM*	VARANASI		* Subject to conditions & aircraft equipage	India, Kolkata	Incompliant
387	IPLAS	Z2	Category S airspace to Category S FIR TOC Point	10minutes/50NM*	VARANASI		* Subject to conditions & aircraft equipage	India, Kolkata	Incompliant
388	LAPAN	V77	Category S airspace to Category S FIR TOC Point	10 minutes	VARANASI			India, Kolkata	Incompliant
389	FIR BOUNDARY	L509	Category S airspace to Category S FIR TOC Point	10 minutes/50NM*	DELHI		* Subject to conditions & aircraft equipage	India, Kolkata	Incompliant
390	FIR BOUNDARY	L333	Category S airspace to Category S FIR TOC Point	10 minutes/50NM*	DELHI		* Subject to conditions & aircraft equipage	India, Kolkata	Incompliant
391	FIR BOUNDARY	W33	Category S airspace to Category S FIR TOC Point	10 minutes/50NM*	DELHI		* Subject to conditions & aircraft equipage	India, Kolkata	Incompliant
392	FIR BOUNDARY	J48	Category S airspace to Category S FIR TOC Point	10 minutes	DELHI			India, Kolkata	Incompliant
393	FIR BOUNDARY	J1	Category S airspace to Category S FIR TOC Point	10 minutes	DELHI			India, Kolkata	Incompliant
394	FIR BOUNDARY	J71	Category S airspace to Category S FIR TOC Point	10 minutes	DELHI			India, Kolkata	Incompliant
395	FIR BOUNDARY	J37	Category S airspace to Category S FIR TOC Point	10 minutes	DELHI			India, Kolkata	Incompliant
396	FIR BOUNDARY	J47	Category S airspace to Category S FIR TOC Point	10 minutes	DELHI			India, Kolkata	Incompliant
397	IGONA	J30	Category S airspace to Category S FIR TOC Point	10 minutes	DELHI			India, Kolkata	Incompliant
398	FIR BOUNDARY	J73	Category S airspace to Category S FIR TOC Point	10 minutes	DELHI			India, Kolkata	Incompliant
399	LKN	W40	Category S airspace to Category S FIR TOC Point	10 minutes	DELHI			India, Kolkata	Incompliant

S/No.	TOC Points	ATS Routes	Category of Airspace to FIR TOC Point (Inbound only)	Minimum horizontal separation standard	Inbound Transferring FIR	Auto hand-off surveillance data-sharing overlapping coverage at the TOC point : Yes or No	Remarks/Route Restrictions	Accepting State, FIR	Seamless ANS Plan compliance?
400	LKN	M890	Category S airspace to Category S FIR TOC Point	10 minutes/50NM*	DELHI		* Subject to conditions & aircraft equipage	India, Kolkata	Incompliant
401	LKN	R460(E/B)	Category S airspace to Category S FIR TOC Point	10 minutes/50NM*	DELHI		* Subject to conditions & aircraft equipage	India, Kolkata	Incompliant
402	LKN	R460(W/B)	Category S airspace to Category S FIR TOC Point	10 minutes/50NM*	DELHI		* Subject to conditions & aircraft equipage	India, Kolkata	Incompliant
403	LKN	R594	Category S airspace to Category S FIR TOC Point	10 minutes with MNT	DELHI			India, Kolkata	Incompliant
404	LKN	G598	Category S airspace to Category S FIR TOC Point	10 minutes	DELHI			India, Kolkata	Incompliant
405	FIR BOUNDARY	M875	Category S airspace to Category S FIR TOC Point	10 minutes/50NM*	DELHI		* Subject to conditions & aircraft equipage	India, Kolkata	Incompliant
406	KKJ	L759	Category S airspace to Category S FIR TOC Point	10 minutes/50NM*	DELHI		* Subject to conditions & aircraft equipage	India, Kolkata	Incompliant
407	FIR BOUNDARY	B209	Category S airspace to Category S FIR TOC Point	10 minutes with MNT	DELHI			India, Kolkata	Incompliant
408	FIR BOUNDARY	Z2	Category S airspace to Category S FIR TOC Point	50NM*	DELHI		* Subject to conditions & aircraft equipage	India, Kolkata	Incompliant
409	LKN	Q18	Category S airspace to Category S FIR TOC Point	10 minutes/50NM*	DELHI		* Subject to conditions & aircraft equipage	India, Kolkata	Incompliant
410	LKN	A201	Category S airspace to Category S FIR TOC Point	10 minutes/50NM*	DELHI		* Subject to conditions & aircraft equipage	India, Kolkata	Incompliant
411	FIR BOUNDARY	J59	Category S airspace to Category S FIR TOC Point	10 minutes	DELHI			India, Kolkata	Incompliant
412	FIR BOUNDARY	J83	Category S airspace to Category S FIR TOC Point	10 minutes	DELHI			India, Kolkata	Incompliant
413	LKN	J20	Category S airspace to Category S FIR TOC Point	50NM	DELHI			India, Kolkata	Incompliant
414	LKN	J39	Category S airspace to Category S FIR TOC Point	10 minutes	DELHI			India, Kolkata	Incompliant
415	LKN	J82	Category S airspace to Category S FIR TOC Point	10 minutes	DELHI			India, Kolkata	Incompliant
416	LKN	W85	Category S airspace to Category S FIR TOC Point	10 minutes	DELHI			India, Kolkata	Incompliant
417	LAROB	Q24	Category S airspace to Category S FIR TOC Point	20NM	CHENNAI		* Subject to conditions and aircraft equipage	India, Mumbai	Compliant
418	AGELA	Q8	Category S airspace to Category S FIR TOC Point	30NM* / 50NM	CHENNAI		* Subject to conditions and aircraft equipage	India, Mumbai	Incompliant
419	OKILA	Q12	Category S airspace to Category S FIR TOC Point	30NM* / 50NM	CHENNAI		* Subject to conditions and aircraft equipage	India, Mumbai	Incompliant
420	DUKOD	Z5	Category S airspace to Category S FIR TOC Point	20NM*	CHENNAI		* Subject to conditions and aircraft equipage	India, Mumbai	Compliant
421	LUTGU	L518	Category S airspace to Category S FIR TOC Point	50NM* / 10 MINUTES	CHENNAI		* Subject to conditions and aircraft equipage	India, Mumbai	Incompliant
422	LUTGU	J107	Category S airspace to Category S FIR TOC Point	10 MINUTES	CHENNAI			India, Mumbai	Incompliant
423	OMDEV	T9	Category S airspace to Category S FIR TOC Point	50NM*	CHENNAI		* Subject to conditions and aircraft equipage	India, Mumbai	Incompliant
424	AGELA	W56, N571	Category S airspace to Category S FIR TOC Point	30NM* / 50NM* / 10 MINUTES	CHENNAI		* Subject to conditions and aircraft equipage	India, Mumbai	Incompliant
425	EPKOS	W67	Category S airspace to Category S FIR TOC Point	30NM* / 10 MINUTES	CHENNAI		* Subject to conditions and aircraft equipage	India, Mumbai	Incompliant
426	BBM	R458	Category S airspace to Category S FIR TOC Point	30NM* / 10 MINUTES	CHENNAI		* Subject to conditions and aircraft equipage	India, Mumbai	Incompliant
427	OKILA	574, R461, W1	Category S airspace to Category S FIR TOC Point	30NM* / 50NM* / 10 MINUTES	CHENNAI		* Subject to conditions and aircraft equipage	India, Mumbai	Incompliant
428	GODEP	W28	Category S airspace to Category S FIR TOC Point	30NM* / 10 MINUTES	CHENNAI		* Subject to conditions and aircraft equipage	India, Mumbai	Incompliant
429	GODEP	J28	Category S airspace to Category S FIR TOC Point	10 MINUTES	CHENNAI			India, Mumbai	Incompliant
430	LUTGU	W19	Category S airspace to Category S FIR TOC Point	10 MINUTES	CHENNAI			India, Mumbai	Incompliant
431	BUSBO	20, W27, Q28,	Category S airspace to Category S FIR TOC Point	10 MINUTES	CHENNAI			India, Mumbai	Incompliant
432	SUDUM	W38	Category S airspace to Category S FIR TOC Point	10 MINUTES	CHENNAI			India, Mumbai	Incompliant
433	AGELA	G208	Category S airspace to Category S FIR TOC Point	50NM* / 10 MINUTES	CHENNAI		* Subject to conditions and aircraft equipage	India, Mumbai	Incompliant
434	MELAX	W18, W218	Category S airspace to Category S FIR TOC Point	10 MINUTES	CHENNAI			India, Mumbai	Incompliant
435	MELAX	Q27/J42	Category S airspace to Category S FIR TOC Point	10 MINUTES	CHENNAI			India, Mumbai	Incompliant
436	GUROG	J64	Category S airspace to Category S FIR TOC Point	10 MINUTES	CHENNAI			India, Mumbai	Incompliant
437	FIR BOUNDARY	J41	Category S airspace to Category S FIR TOC Point	10 MINUTES	CHENNAI			India, Mumbai	Incompliant
438	UXOGO	J65/J104	Category S airspace to Category S FIR TOC Point	10 MINUTES	CHENNAI			India, Mumbai	Incompliant
439	DOVTO	J93	Category S airspace to Category S FIR TOC Point	10 MINUTES	CHENNAI			India, Mumbai	Incompliant
440	LEBUS	J29	Category S airspace to Category S FIR TOC Point	10 MINUTES	CHENNAI			India, Mumbai	Incompliant
441	FIR Boundary	W136, J89	Category S airspace to Category S FIR TOC Point	10 MINUTES	CHENNAI			India, Mumbai	Incompliant
442	KEVIB	J36	Category S airspace to Category S FIR TOC Point	10 MINUTES	CHENNAI			India, Mumbai	Incompliant
443	TANGE	J67	Category S airspace to Category S FIR TOC Point	10 MINUTES	CHENNAI			India, Mumbai	Incompliant
444	TANGE	Q16	Category S airspace to Category S FIR TOC Point	20 NM* / 10 MINUTES	CHENNAI		* Subject to conditions and aircraft equipage	India, Mumbai	Incompliant
445	IBANI	Q23	Category S airspace to Category S FIR TOC Point	20 NM	DELHI			India, Mumbai	Compliant
446	TMA Boundary	1(CDR-2 route)	Category S airspace to Category S FIR TOC Point	50 NM	DELHI			India, Mumbai	Incompliant
447	ADBUK	Q2	Category S airspace to Category S FIR TOC Point	20NM* / 50NM	DELHI		* Subject to conditions and aircraft equipage	India, Mumbai	Incompliant
448	IBANI	W19	Category S airspace to Category S FIR TOC Point	40NM* / 10 MINUTES	DELHI		* Subject to conditions and aircraft equipage	India, Mumbai	Incompliant
449	IBANI	P628, L510	Category S airspace to Category S FIR TOC Point	50NM* / 10 MINUTES	DELHI		* Subject to conditions and aircraft equipage	India, Mumbai	Incompliant
450	BILAN	W10	Category S airspace to Category S FIR TOC Point	10 MINUTES	DELHI			India, Mumbai	Incompliant
451	IDQLA	A474	Category S airspace to Category S FIR TOC Point	10 MINUTES	DELHI			India, Mumbai	Incompliant
452	UUD	58, R462, Z9, J	Category S airspace to Category S FIR TOC Point	10 MINUTES	DELHI			India, Mumbai	Incompliant
453	UUD	Q5	Category S airspace to Category S FIR TOC Point	50NM WITH MNT	DELHI		* Subject to conditions and aircraft equipage	India, Mumbai	Incompliant
454	MIBOG	J50, J62	Category S airspace to Category S FIR TOC Point	10 MINUTES	DELHI			India, Mumbai	Incompliant
455	POVOS	J51, Z8	Category S airspace to Category S FIR TOC Point	10 MINUTES	DELHI			India, Mumbai	Incompliant
456	SEKDO	Z15	Category S airspace to Category S FIR TOC Point	20 NM	DELHI			India, Mumbai	Compliant
457	FIR Boundary	J37, J52	Category S airspace to Category S FIR TOC Point	10 MINUTES	DELHI			India, Mumbai	Incompliant
458	FIR Boundary	Q20	Category S airspace to Category S FIR TOC Point	20NM	KOLKATA			India, Mumbai	Compliant
459	FIR Boundary	V39	Category S airspace to Category S FIR TOC Point	30NM* / 10 MINUTES	KOLKATA		* Subject to conditions and aircraft equipage	India, Mumbai	Incompliant

S/No.	TOC Points	ATS Routes	Category of Airspace to FIR TOC Point (Inbound only)	Minimum horizontal separation standard	Inbound Transferring FIR	Auto hand-off surveillance data-sharing overlapping coverage at the TOC point : Yes or No	Remarks/Route Restrictions	Accepting State, FIR	Seamless ANS Plan compliance?
460	ODUMI	T1	Category S airspace to Category S FIR TOC Point	30NM* / 10 MINUTES	KOLKATA		* Subject to conditions and aircraft equipage	India, Mumbai	Incompliant
461	VEMPI	W140	Category S airspace to Category S FIR TOC Point	30NM* / 10 MINUTES	KOLKATA		* Subject to conditions and aircraft equipage	India, Mumbai	Incompliant
462	TEGIG	G450, V38	Category S airspace to Category S FIR TOC Point	30NM* / 10 MINUTES	KOLKATA		* Subject to conditions and aircraft equipage	India, Mumbai	Incompliant
463	ASOPO	P628	Category S airspace to Category S FIR TOC Point	50NM* / 10 MINUTES	KOLKATA		* Subject to conditions and aircraft equipage	India, Mumbai	Incompliant
464	TEGIG	W108	Category S airspace to Category S FIR TOC Point	30NM* / 10 MINUTES	KOLKATA		* Subject to conditions and aircraft equipage	India, Mumbai	Incompliant
465	FIR Boundary	W895, L524, Z1	Category S airspace to Category S FIR TOC Point	50NM* / 10 MINUTES	KOLKATA		* Subject to conditions and aircraft equipage	India, Mumbai	Incompliant
466	Common Boundary	N877, L301	Category S airspace to Category S FIR TOC Point	50NM* / 10 MINUTES	KOLKATA		* Subject to conditions and aircraft equipage	India, Mumbai	Incompliant
467	ASOPO	A791	Category S airspace to Category S FIR TOC Point	30NM* / 50NM* / 10 MINUTES	KOLKATA		* Subject to conditions and aircraft equipage	India, Mumbai	Incompliant
468	JJB	W99	Category S airspace to Category S FIR TOC Point	10 MINUTES	KOLKATA			India, Mumbai	Incompliant
469	FIR Boundary	W68, W139, V	Category S airspace to Category S FIR TOC Point	10 MINUTES	KOLKATA			India, Mumbai	Incompliant
470	GUTUN	W139	Category S airspace to Category S FIR TOC Point	10 MINUTES	KOLKATA			India, Mumbai	Incompliant
471	TELEM	L, G210, N893,	Category S airspace to Category S FIR TOC Point	50NM* / 10 MINUTES	KARACHI		* Subject to conditions and aircraft equipage	India, Mumbai	Incompliant
472	RAMSA	R462	Category S airspace to Category S FIR TOC Point	10 MINUTES	KARACHI			India, Mumbai	Incompliant
473	RAMSA	Z15	Category S airspace to Category S FIR TOC Point	20NM	KARACHI		Surveillance Required; RNP 2 & ADS-B OUT	India, Mumbai	Compliant
474	SAPNA	M638, N519	Category R/S airspace to Category R FIR TOC Point	50NM* / 10 MINUTES	KARACHI		* Subject to conditions and aircraft equipage	India, Mumbai	Incompliant
475	RASKI	L639, L301	Category R/S airspace to Category R FIR TOC Point	50NM* / 10 MINUTES	MUSCAT		* Subject to conditions and aircraft equipage	India, Mumbai	Incompliant
476	PARAR	N571	Category R/S airspace to Category R FIR TOC Point	50NM* / 10 MINUTES	MUSCAT		* Subject to conditions and aircraft equipage	India, Mumbai	Incompliant
477	TOTOX	P574	Category R/S airspace to Category R FIR TOC Point	50NM* / 10 MINUTES	MUSCAT		* Subject to conditions and aircraft equipage	India, Mumbai	Incompliant
478	REXOD	N563	Category R/S airspace to Category R FIR TOC Point	50NM* / 10 MINUTES	MUSCAT		* Subject to conditions and aircraft equipage	India, Mumbai	Incompliant
479	LOTAV	M300	Category R/S airspace to Category R FIR TOC Point	50NM* / 10 MINUTES	MUSCAT		* Subject to conditions and aircraft equipage	India, Mumbai	Incompliant
480	KITAL	570, L894, L51	Category R/S airspace to Category R FIR TOC Point	50NM* / 10 MINUTES	MUSCAT		* Subject to conditions and aircraft equipage	India, Mumbai	Incompliant
481	ASPUX	UL425	Category R/S airspace to Category R FIR TOC Point	10 MINUTES	MUSCAT			India, Mumbai	Incompliant
482	ANGAL	P751, UM551	Category R/S airspace to Category R FIR TOC Point	10 MINUTES	SANA'S			India, Mumbai	Incompliant
483	GIDAS	P323	Category R/S airspace to Category R FIR TOC Point	10 MINUTES	SANA'S			India, Mumbai	Incompliant
484	ORLID	G450	Category R/S airspace to Category R FIR TOC Point	10 MINUTES	MOGADISHU			India, Mumbai	Incompliant
485	VUTAS	G424, L875	Category R/S airspace to Category R FIR TOC Point	10 MINUTES	SEYHELLES			India, Mumbai	Incompliant
486	CLAVA	B459, L756	Category R/S airspace to Category R FIR TOC Point	10 MINUTES	SEYHELLES			India, Mumbai	Incompliant
487	OTKIR	G465	Category R/S airspace to Category R FIR TOC Point	10 MINUTES	SEYHELLES			India, Mumbai	Incompliant
488	BUSUX	N628	Category R/S airspace to Category R FIR TOC Point	10 MINUTES	SEYHELLES			India, Mumbai	Incompliant
489	MURUS	A474	Category R/S airspace to Category R FIR TOC Point	10 MINUTES	MAURITIUS			India, Mumbai	Incompliant
490	LEVLU	N628	Category R/S airspace to Category R FIR TOC Point	10 MINUTES	MALE			India, Mumbai	Incompliant
491	ELKEL	G465, L516	Category R/S airspace to Category R FIR TOC Point	10 MINUTES	MALE			India, Mumbai	Incompliant
492	RULSA	L756	Category R/S airspace to Category R FIR TOC Point	10 MINUTES	MALE			India, Mumbai	Incompliant
493	BIBGO	L894	Category R/S airspace to Category R FIR TOC Point	10 MINUTES	MALE			India, Mumbai	Incompliant
494	ANODA	UL425	Category R/S airspace to Category R FIR TOC Point	10 MINUTES	CHENNAI			India, Mumbai	Incompliant
495	KAKIB	N563	Category R/S airspace to Category R FIR TOC Point	50NM* / 10 MINUTES	CHENNAI		* Subject to conditions and aircraft equipage	India, Mumbai	Incompliant
496	OSUPI	T5	Category R/S airspace to Category R FIR TOC Point	50NM* / 10 MINUTES	CHENNAI		* Subject to conditions and aircraft equipage	India, Mumbai	Incompliant
497	BEDIL	L875	Category R/S airspace to Category R FIR TOC Point	50NM* / 10 MINUTES	CHENNAI		* Subject to conditions and aircraft equipage	India, Mumbai	Incompliant
498	VASTU	M300	Category R/S airspace to Category R FIR TOC Point	50NM* / 10 MINUTES	CHENNAI		* Subject to conditions and aircraft equipage	India, Mumbai	Incompliant
499	POMAN	P570	Category R/S airspace to Category R FIR TOC Point	50NM* / 10 MINUTES	CHENNAI		* Subject to conditions and aircraft equipage	India, Mumbai	Incompliant
500	WAYPOINT A		Category R/S airspace to Category R FIR TOC Point		DELHI		SEPARATION NOT DEFINED, REFER NOTAM BELOW; C0143/23 NOTAMR C1493/22 Q) VAXX/QARXX/IV/BO/E/000/999/ A) VABF VDF B) 2302030510 C) 2305030509EST E) TEMPO ATS RTE JSL NDB (VIJR) DCT WAY PT A (2521N07108E) DCT AAE VOR (VAAH) AVBL FOR FLT OPS	India, Mumbai	Incompliant
501	AKSUN	A204/Y104	Category S airspace to Category S FIR TOC Point	10 Mins	Khabarovsk	No		Japan	Incompliant
502	LUMIN	Y10/B223	Category S airspace to Category S FIR TOC Point	10 Mins	Khabarovsk	No		Japan	Incompliant
503	ODERI	B932	Category S airspace to Category S FIR TOC Point	10 Mins	Khabarovsk	No		Japan	Incompliant
504	BISIV	G583/Y116	Category S airspace to Category S FIR TOC Point	20NM	Khabarovsk	No		Japan	Compliant
505	ANIMO	B337/Y114	Category S airspace to Category S FIR TOC Point	20NM	Khabarovsk	No		Japan	Compliant
506	IGROD	Y301/Y304/Y 347/Y377/B4 51	Category S airspace to Category S FIR TOC Point	15NM	Khabarovsk	No		Japan	Compliant
507	SAPRA	G585/Y16/Y3 8/Y599(Y685)	Category S airspace to Category S FIR TOC Point	20NM	Incheon	Yes		Japan	Incompliant
508	LANAT	G597/Y51/Y5 97/Y71(Y697)	Category S airspace to Category S FIR TOC Point	20NM	Incheon	Yes		Japan	Incompliant
509	IGRAS	B332/Y332(Z 56)	Category S airspace to Category S FIR TOC Point	20NM	Incheon	Yes		Japan	Incompliant

S/No.	TOC Points	ATS Routes	Category of Airspace to FIR TOC Point (Inbound only)	Minimum horizontal separation standard	Inbound Transferring FIR	Auto hand-off surveillance data-sharing overlapping coverage at the TOC point : Yes or No	Remarks/Route Restrictions	Accepting State, FIR	Seamless ANS Plan compliance?
510	ANDOL	L512	Category S airspace to Category S FIR TOC Point	20NM	Incheon	Yes		Japan	Incompliant
511	MEVIN	B462	Category S airspace to Category S FIR TOC Point	15 Mins	Manila	No	Category R/S airspace to Category R/S FIR TOC Point Inbound(northeast bound) altitudes are FL290, FL310, FL320, FL350, FL360, FL390 and FL400 due to FLAS in Manila FIR.	Japan	Incompliant
512	BISIG	A582	Category S airspace to Category S FIR TOC Point	15 Mins	Manila	No	Category R/S airspace to Category R/S FIR TOC Point	Japan	Incompliant
513	LEBIX	N884	Category S airspace to Category S FIR TOC Point	15 Mins	Manila	No	Category R/S airspace to Category R/S FIR TOC Point	Japan	Incompliant
514	KALEK	Y206	Category S airspace to Category S FIR TOC Point	20NM	Incheon	Yes		Japan	Incompliant
515	INVOK	G339/Y208	Category S airspace to Category S FIR TOC Point	20NM	Incheon	Yes		Japan	Incompliant
516	APELA	A582	Category S airspace to Category S FIR TOC Point	20NM	Incheon	Yes		Japan	Incompliant
517	BESNA	Y209	Category S airspace to Category S FIR TOC Point	20NM	Incheon	Yes		Japan	Incompliant
518	RUGMA	A586/Y579	Category S airspace to Category S FIR TOC Point	20NM	Incheon	Yes		Japan	Incompliant
519	ONIKU	A593/Y592	Category S airspace to Category S FIR TOC Point	20NM	Incheon	Yes		Japan	Incompliant
520	BEDAR	Y591	Category S airspace to Category S FIR TOC Point	20NM	Incheon	Yes	Inbound(east bound) altitudes are FL250, FL290, FL310 and FL390 due to FLAS in the AKARA-FUKUE corridor of Incheon FIR.	Japan	Incompliant
521	SAMDO	A595	Category S airspace to Category S FIR TOC Point	20NM	Incheon	Yes		Japan	Incompliant
522	ATOTI	Y741/B576	Category S airspace to Category S FIR TOC Point	30 or 60NM	Incheon	Yes		Japan	Incompliant
523	MUGUS	Y742	Category S airspace to Category S FIR TOC Point	30NM	Incheon	Yes		Japan	Incompliant
524	APITO	AKARA-APITO- MIKES	Category S airspace to Category S FIR TOC Point	15 Mins	Shanghai	No		Japan	Incompliant
525	BULAN	A1/Y751	Category S airspace to Category S FIR TOC Point	20 or 60NM	Taipei	Yes	20 or 60NM depending on the destination	Japan	Incompliant
526	MOLKA	M750	Category S airspace to Category S FIR TOC Point	20NM	Taipei	Yes		Japan	Incompliant
527	SALMI	B576/Y742/Y 743	Category S airspace to Category S FIR TOC Point	30 or 60NM	Taipei	Yes		Japan	Incompliant
528	LIPLO	Y741	Category S airspace to Category S FIR TOC Point	30NM	Taipei	Yes		Japan	Incompliant
529	NIPPI	R220	Category S airspace to Category S FIR TOC Point	30NM	Anchorage	Yes	50NM for PBCS and RNP10 aircraft, 10 Mins for non-PBCS aircraft	Japan	Incompliant
530	OMOTO	R580	Category S airspace to Category S FIR TOC Point	30NM	Anchorage	Yes	50NM for PBCS and RNP10 aircraft, 10 Mins for non-PBCS aircraft	Japan	Incompliant
531	AKISU	R591	Category S airspace to Category S FIR TOC Point	30NM	Anchorage	Yes	50NM for PBCS and RNP10 aircraft, 10 Mins for non-PBCS aircraft	Japan	Incompliant
532	CUTEE	G344	Category R/S airspace to Category R FIR TOC Point	30NM	Anchorage	Yes	50NM for PBCS and RNP10 aircraft, 10 Mins for non-PBCS aircraft	Japan	Compliant
533	EMNAK		Category R/S airspace to Category R FIR TOC Point	30NM	Oakland	Yes	50NM for PBCS and RNP10 aircraft, 10 Mins for non-PBCS aircraft	Japan	Compliant
534	DEWOP		Category R/S airspace to Category R FIR TOC Point	30NM	Oakland	Yes	50NM for PBCS and RNP10 aircraft, 10 Mins for non-PBCS aircraft	Japan	Compliant
535	GNOSS		Category R/S airspace to Category R FIR TOC Point	30NM	Oakland	Yes	50NM for PBCS and RNP10 aircraft, 10 Mins for non-PBCS aircraft	Japan	Compliant
536	VILEY		Category R/S airspace to Category R FIR TOC Point	30NM	Oakland	Yes	50NM for PBCS and RNP10 aircraft, 10 Mins for non-PBCS aircraft	Japan	Compliant
537	CANOE		Category R/S airspace to Category R FIR TOC Point	30NM	Oakland	Yes	50NM for PBCS and RNP10 aircraft, 10 Mins for non-PBCS aircraft	Japan	Compliant
538	BEEBO	G223	Category R/S airspace to Category R FIR TOC Point	30NM	Oakland	Yes	50NM for PBCS and RNP10 aircraft, 10 Mins for non-PBCS aircraft	Japan	Compliant
539	ATIGO	B452	Category R/S airspace to Category R FIR TOC Point	30NM	Oakland	Yes	50NM for PBCS and RNP10 aircraft, 10 Mins for non-PBCS aircraft	Japan	Compliant
540	TEGOD	A337	Category R/S airspace to Category R FIR TOC Point	30NM	Oakland	Yes	50NM for PBCS and RNP10 aircraft, 10 Mins for non-PBCS aircraft	Japan	Compliant
541	OMLET	B586	Category R/S airspace to Category R FIR TOC Point	30NM	Oakland	Yes	50NM for PBCS and RNP10 aircraft, 10 Mins for non-PBCS aircraft	Japan	Compliant
542	MONPI	A597	Category R/S airspace to Category R FIR TOC Point	30NM	Oakland	Yes	50NM for PBCS and RNP10 aircraft, 10 Mins for non-PBCS aircraft	Japan	Compliant
543	PAKDO	G339	Category R/S airspace to Category R FIR TOC Point	30NM	Oakland	Yes	50NM for PBCS and RNP10 aircraft, 10 Mins for non-PBCS aircraft	Japan	Compliant
544	KEITH	R584/R595/A 339	Category R/S airspace to Category R FIR TOC Point	30NM	Oakland	Yes	50NM for PBCS and RNP10 aircraft, 10 Mins for non-PBCS aircraft	Japan	Compliant

S/No.	TOC Points	ATS Routes	Category of Airspace to FIR TOC Point (Inbound only)	Minimum horizontal separation standard	Inbound Transferring FIR	Auto hand-off surveillance data-sharing overlapping coverage at the TOC point : Yes or No	Remarks/Route Restrictions	Accepting State, FIR	Seamless ANS Plan compliance?
545	GURAG	A590	Category R/S airspace to Category R FIR TOC Point	10 Mins MNT	Manila	No		Japan	Incompliant
546	OLKIT	M758	Category R airspace to Category S FIR TOC Point	50NM	SINGAPORE	Yes		Malaysia (Kota Kinabalu)	Compliant
547	ASISU	M768	Category R airspace to Category S FIR TOC Point	50NM	SINGAPORE	Yes		Malaysia (Kota Kinabalu)	Compliant
548	VINIK	M522 & M754	Category S airspace to Category S FIR TOC Point	10 Mins MNT	MANILA	Yes		Malaysia (Kota Kinabalu)	Incompliant
549	OSANU	M646	Category S airspace to Category S FIR TOC Point	50NM	MANILA	Yes	Applicable only to aircraft landing at KK FIR and 10 minutes for overflight aircraft	Malaysia (Kota Kinabalu)	Incompliant
550	VIMAG	A341	Category S airspace to Category S FIR TOC Point	50NM	MANILA	Yes		Malaysia (Kota Kinabalu)	Incompliant
551	MAMOK	M768 & M522	Category S airspace to Category S FIR TOC Point	20NM	UIJUNG	Yes		Malaysia (Kota Kinabalu)	Incompliant
552	AGSON	R223	Category S airspace to Category S FIR TOC Point	20NM	UIJUNG	Yes		Malaysia (Kota Kinabalu)	Incompliant
553	OKADA	P648	Category S airspace to Category S FIR TOC Point	20NM	JAKARTA	Yes		Malaysia (Kota Kinabalu)	Incompliant
554	NOPEK	P574	Category R/S airspace to Category R FIR TOC Point	50NM	CHENNAI OCC	No		Malaysia (Kuala Lumpur)	Compliant
555	ANOKO	B466	Category R/S airspace to Category R FIR TOC Point	50NM	CHENNAI OCC	No		Malaysia (Kuala Lumpur)	Compliant
556	IGOGU	N571	Category R/S airspace to Category R FIR TOC Point	50NM	CHENNAI OCC	No		Malaysia (Kuala Lumpur)	Compliant
557	SAMAK	L645	Category R/S airspace to Category R FIR TOC Point	50NM	CHENNAI OCC	No		Malaysia (Kuala Lumpur)	Compliant
558	EMRAN	L510	Category R/S airspace to Category R FIR TOC Point	50NM	CHENNAI OCC	No		Malaysia (Kuala Lumpur)	Compliant
559	DALAN	B579	Category S airspace to Category S FIR TOC Point	20NM	BANGKOK ACC	Yes		Malaysia (Kuala Lumpur)	Incompliant
560	TAMOS	A457	Category S airspace to Category S FIR TOC Point	20NM	BANGKOK ACC	Yes		Malaysia (Kuala Lumpur)	Incompliant
561	KARMI	M757	Category S airspace to Category S FIR TOC Point	20NM	BANGKOK ACC	Yes		Malaysia (Kuala Lumpur)	Incompliant
562	PASVA	Y514	Category S airspace to Category S FIR TOC Point	20NM	BANGKOK ACC	Yes		Malaysia (Kuala Lumpur)	Incompliant
563	TAXUL	M763	Category S airspace to Category S FIR TOC Point	20NM	SINGAPORE ACC	Yes	WESTBOUND ONLY	Malaysia (Kuala Lumpur)	Incompliant
564	VPK	G582	Category S airspace to Category S FIR TOC Point	20NM	SINGAPORE ACC	Yes		Malaysia (Kuala Lumpur)	Incompliant
565	PADLI	Y343	Category S airspace to Category S FIR TOC Point	20NM	SINGAPORE ACC	Yes	WESTBOUND ONLY	Malaysia (Kuala Lumpur)	Incompliant
566	90DME PU	B469	Category S airspace to Category S FIR TOC Point	20NM	SINGAPORE ACC	Yes		Malaysia (Kuala Lumpur)	Incompliant
567	AROSO	Y339	Category S airspace to Category S FIR TOC Point	15NM	SINGAPORE ACC	Yes	WESTBOUND ONLY	Malaysia (Kuala Lumpur)	Incompliant
568	SABKA	A457	Category S airspace to Category S FIR TOC Point	15NM	SINGAPORE ACC	Yes	WESTBOUND ONLY	Malaysia (Kuala Lumpur)	Incompliant
569	SALAX	N633	Category S airspace to Category S FIR TOC Point	20NM	JAKARTA ACC	Yes		Malaysia (Kuala Lumpur)	Incompliant
570	PUGER	R461	Category S airspace to Category S FIR TOC Point	20NM	JAKARTA ACC	Yes		Malaysia (Kuala Lumpur)	Incompliant
571	GOTLA	G468	Category S airspace to Category S FIR TOC Point	20NM	JAKARTA ACC	Yes		Malaysia (Kuala Lumpur)	Incompliant
572	NONIM	B345	Category S airspace to Category S FIR TOC Point	20NM	KUNMING	No		Nepal	Compliant
573	METOM	G348	Category S airspace to Category S FIR TOC Point	20NM	KOLKATTA	No		Nepal	Compliant
574	GOVKO	G463/R581	Category S airspace to Category S FIR TOC Point	20NM	KOLKATTA	No		Nepal	Compliant
575	BIPOB	G336	Category S airspace to Category S FIR TOC Point	20NM	KOLKATTA	No		Nepal	Compliant
576	OMUPA	G590	Category S airspace to Category S FIR TOC Point	20NM	KOLKATTA	No		Nepal	Compliant
577	PARSA	G598	Category S airspace to Category S FIR TOC Point	20NM	KOLKATTA	No		Nepal	Compliant
578	BUGBA	P753	Category R/S airspace to Category R FIR TOC Point	RLAT 23NM / RLONG 30NM	Brisbane FIR (YBBB)	No	Based on RCP240 and RSP180 approval	New Zealand	Compliant
579	ELGUN	M643	Category R/S airspace to Category R FIR TOC Point	RLAT 23NM / RLONG 30NM	Brisbane FIR (YBBB)	No	Based on RCP240 and RSP180 approval	New Zealand	Compliant
580	OMKIN	P766	Category R/S airspace to Category R FIR TOC Point	RLAT 23NM / RLONG 30NM	Brisbane FIR (YBBB)	No	Based on RCP240 and RSP180 approval	New Zealand	Compliant
581	OMKIN	L508	Category R/S airspace to Category R FIR TOC Point	RLAT 23NM / RLONG 30NM	Brisbane FIR (YBBB)	No	Based on RCP240 and RSP180 approval	New Zealand	Compliant
582	TOMAR	M625	Category R/S airspace to Category R FIR TOC Point	RLAT 23NM / RLONG 30NM	Brisbane FIR (YBBB)	No	Based on RCP240 and RSP180 approval	New Zealand	Compliant
583	MIDAT	L513	Category R/S airspace to Category R FIR TOC Point	RLAT 23NM / RLONG 30NM	Brisbane FIR (YBBB)	No	Based on RCP240 and RSP180 approval	New Zealand	Compliant
584	SULON	N750	Category R/S airspace to Category R FIR TOC Point	RLAT 23NM / RLONG 30NM	Brisbane FIR (YBBB)	No	Based on RCP240 and RSP180 approval	New Zealand	Compliant
585	NUMSA	P880	Category R/S airspace to Category R FIR TOC Point	RLAT 23NM / RLONG 30NM	Brisbane FIR (YBBB)	No	Based on RCP240 and RSP180 approval	New Zealand	Compliant
586	SASRO	M636	Category R/S airspace to Category R FIR TOC Point	RLAT 23NM / RLONG 30NM	Brisbane FIR (YBBB)	No	Based on RCP240 and RSP180 approval	New Zealand	Compliant
587	SASRO	N759	Category R/S airspace to Category R FIR TOC Point	RLAT 23NM / RLONG 30NM	Brisbane FIR (YBBB)	No	Based on RCP240 and RSP180 approval	New Zealand	Compliant
588	LEGAN	L521	Category R/S airspace to Category R FIR TOC Point	RLAT 23NM / RLONG 30NM	Brisbane FIR (YBBB)	No	Based on RCP240 and RSP180 approval	New Zealand	Compliant
589	RUNOD	L503	Category R/S airspace to Category R FIR TOC Point	RLAT 23NM / RLONG 30NM	Brisbane FIR (YBBB)	No	Based on RCP240 and RSP180 approval	New Zealand	Compliant
590	VEPAS	M639	Category R/S airspace to Category R FIR TOC Point	RLAT 23NM / RLONG 30NM	Brisbane FIR (YBBB)	No	Based on RCP240 and RSP180 approval	New Zealand	Compliant

S/No.	TOC Points	ATS Routes	Category of Airspace to FIR TOC Point (Inbound only)	Minimum horizontal separation standard	Inbound Transferring FIR	Auto hand-off surveillance data-sharing overlapping coverage at the TOC point : Yes or No	Remarks/Route Restrictions	Accepting State, FIR	Seamless ANS Plan compliance?
591	SARAP	G595	Category R/S airspace to Category R FIR TOC Point	RLAT 23NM / RLONG 30NM	Brisbane FIR (YBBB)	No	Based on RCP240 and RSP180 approval	New Zealand	Compliant
592	RIGMI	A464	Category R/S airspace to Category R FIR TOC Point	RLAT 23NM / RLONG 30NM	Brisbane FIR (YBBB)	No	Based on RCP240 and RSP180 approval	New Zealand	Compliant
593	TEKEP	A346	Category R/S airspace to Category R FIR TOC Point	RLAT 23NM / RLONG 30NM	Brisbane FIR (YBBB)	No	Based on RCP240 and RSP180 approval	New Zealand	Compliant
594	TEKEP	B450	Category R/S airspace to Category R FIR TOC Point	RLAT 23NM / RLONG 30NM	Brisbane FIR (YBBB)	No	Based on RCP240 and RSP180 approval	New Zealand	Compliant
595	LEBOL	B333	Category R/S airspace to Category R FIR TOC Point	30NM	Nadi FIR (NFFF)	No	Based on RNP4 certified aircraft meeting RCP240/RSP180	New Zealand	Compliant
596	UBDAK	G239	Category R/S airspace to Category R FIR TOC Point	30NM	Nadi FIR (NFFF)	No	Based on RNP4 certified aircraft meeting RCP240/RSP180	New Zealand	Compliant
597	OSVAR	G591	Category R/S airspace to Category R FIR TOC Point	30NM	Nadi FIR (NFFF)	No	Based on RNP4 certified aircraft meeting RCP240/RSP180	New Zealand	Compliant
598	LEKAX	A597	Category R/S airspace to Category R FIR TOC Point	30NM	Nadi FIR (NFFF)	No	Based on RNP4 certified aircraft meeting RCP240/RSP180	New Zealand	Compliant
599	SADIM	R599	Category R/S airspace to Category R FIR TOC Point	30NM	Nadi FIR (NFFF)	No	Based on RNP4 certified aircraft meeting RCP240/RSP180	New Zealand	Compliant
600	TERUX	G224	Category R/S airspace to Category R FIR TOC Point	30NM	Nadi FIR (NFFF)	No	Based on RNP4 certified aircraft meeting RCP240/RSP180	New Zealand	Compliant
601	DOLSI	B450	Category R/S airspace to Category R FIR TOC Point	30NM	Nadi FIR (NFFF)	No	Based on RNP4 certified aircraft meeting RCP240/RSP180	New Zealand	Compliant
602	POREN	A578	Category R/S airspace to Category R FIR TOC Point	30NM	Nadi FIR (NFFF)	No	Based on RNP4 certified aircraft meeting RCP240/RSP180	New Zealand	Compliant
603	EGATO	A580	Category R/S airspace to Category R FIR TOC Point	30NM	Nadi FIR (NFFF)	No	Based on RNP4 certified aircraft meeting RCP240/RSP180	New Zealand	Compliant
604	GURDI	B578	Category R/S airspace to Category R FIR TOC Point	30NM	Nadi FIR (NFFF)	No	Based on RNP4 certified aircraft meeting RCP240/RSP180	New Zealand	Compliant
605	TAXIS	B598	Category R/S airspace to Category R FIR TOC Point	30NM	Nadi FIR (NFFF)	No	Based on RNP4 certified aircraft meeting RCP240/RSP180	New Zealand	Compliant
606	SOVPA	B450	Category R/S airspace to Category R FIR TOC Point	30NM	Nadi FIR (NFFF)	No	Based on RNP4 certified aircraft meeting RCP240/RSP180	New Zealand	Compliant
607	ESDOX	G593	Category R/S airspace to Category R FIR TOC Point	30NM	Nadi FIR (NFFF)	No	Based on RNP4 certified aircraft meeting RCP240/RSP180	New Zealand	Compliant
608	VIMEK	B599	Category R/S airspace to Category R FIR TOC Point	30NM	Nadi FIR (NFFF)	No	Based on RNP4 certified aircraft meeting RCP240/RSP180	New Zealand	Compliant
609	BODER	G224	Category R/S airspace to Category R FIR TOC Point	30NM	Nadi FIR (NFFF)	No	Based on RNP4 certified aircraft meeting RCP240/RSP180	New Zealand	Compliant
610	DOMAX	A580	Category R/S airspace to Category R FIR TOC Point	30NM	Nadi FIR (NFFF)	No	Based on RNP4 certified aircraft meeting RCP240/RSP180	New Zealand	Compliant
611	IDNIP	R453	Category R/S airspace to Category R FIR TOC Point	30NM	Nadi FIR (NFFF)	No	Based on RNP4 certified aircraft meeting RCP240/RSP180	New Zealand	Compliant
612	OVLAD	B577	Category R/S airspace to Category R FIR TOC Point	30NM	Nadi FIR (NFFF)	No	Based on RNP4 certified aircraft meeting RCP240/RSP180	New Zealand	Compliant
613	KETUS	A584	Category R/S airspace to Category R FIR TOC Point	30NM	Nadi FIR (NFFF)	No	Based on RNP4 certified aircraft meeting RCP240/RSP180	New Zealand	Compliant
614	GOMIK	B581	Category R/S airspace to Category R FIR TOC Point	30NM	Nadi FIR (NFFF)	No	Based on RNP4 certified aircraft meeting RCP240/RSP180	New Zealand	Compliant
615	DUNEY	G347	Category R/S airspace to Category R FIR TOC Point	RLAT 23NM / RLONG 30NM	Oakland Oceanic FIR (KZAK)	No	Based on RNP4 certified aircraft meeting RCP240/RSP180	New Zealand	Compliant
616	WOOPY	B581	Category R/S airspace to Category R FIR TOC Point	RLAT 23NM / RLONG 30NM	Oakland Oceanic FIR (KZAK)	No	Based on RNP4 certified aircraft meeting RCP240/RSP180	New Zealand	Compliant
617	ELLSM	G457	Category R/S airspace to Category R FIR TOC Point	RLAT 23NM / RLONG 30NM	Oakland Oceanic FIR (KZAK)	No	Based on RNP4 certified aircraft meeting RCP240/RSP180	New Zealand	Compliant
618	PASSA	B577	Category R/S airspace to Category R FIR TOC Point	RLAT 23NM / RLONG 30NM	Oakland Oceanic FIR (KZAK)	No	Based on RNP4 certified aircraft meeting RCP240/RSP180	New Zealand	Compliant
619	RAMIZ	B596	Category R/S airspace to Category R FIR TOC Point	RLAT 23NM / RLONG 30NM	Oakland Oceanic FIR (KZAK)	No	Based on RNP4 certified aircraft meeting RCP240/RSP180	New Zealand	Compliant
620	MEGOG	B200	Category R/S airspace to Category R FIR TOC Point	30NM	Tahiti FIR (NTTT)	No	Based on RNP4 certified aircraft meeting RCP240/RSP180	New Zealand	Compliant
621	MASBU	G224	Category R/S airspace to Category R FIR TOC Point	30NM	Tahiti FIR (NTTT)	No	Based on RNP4 certified aircraft meeting RCP240/RSP180	New Zealand	Compliant
622	BIBUP	B454	Category R/S airspace to Category R FIR TOC Point	30NM	Tahiti FIR (NTTT)	No	Based on RNP4 certified aircraft meeting RCP240/RSP180	New Zealand	Compliant
623	LEMUN	B599	Category R/S airspace to Category R FIR TOC Point	30NM	Tahiti FIR (NTTT)	No	Based on RNP4 certified aircraft meeting RCP240/RSP180	New Zealand	Compliant
624	GUBKA	G223	Category R/S airspace to Category R FIR TOC Point	30NM	Tahiti FIR (NTTT)	No	Based on RNP4 certified aircraft meeting RCP240/RSP180	New Zealand	Compliant
625	DUMUM	B578	Category R/S airspace to Category R FIR TOC Point	30NM	Tahiti FIR (NTTT)	No	Based on RNP4 certified aircraft meeting RCP240/RSP180	New Zealand	Compliant
626	KRILL	G594	Category R/S airspace to Category R FIR TOC Point	30NM	Tahiti FIR (NTTT)	No	Based on RNP4 certified aircraft meeting RCP240/RSP180	New Zealand	Compliant
627	RAXER	G595	Category R/S airspace to Category R FIR TOC Point	30NM	Tahiti FIR (NTTT)	No	Based on RNP4 certified aircraft meeting RCP240/RSP180	New Zealand	Compliant
628	SOSPI	G599	Category R/S airspace to Category R FIR TOC Point	30NM	Tahiti FIR (NTTT)	No	Based on RNP4 certified aircraft meeting RCP240/RSP180	New Zealand	Compliant
629	ADKOS	P753	Category R airspace to Category S FIR TOC Point	5NM	Auckland Oceanic	N/A		New Zealand	Compliant
630	LIBLA	P880	Category R airspace to Category S FIR TOC Point	5NM	Auckland Oceanic	N/A		New Zealand	Compliant
631	LIBLA	Y124	Category R airspace to Category S FIR TOC Point	5NM	Auckland Oceanic	N/A		New Zealand	Compliant
632	KABIN	L508	Category R airspace to Category S FIR TOC Point	5NM	Auckland Oceanic	N/A		New Zealand	Compliant
633	VANDA	N750	Category R airspace to Category S FIR TOC Point	5NM	Auckland Oceanic	N/A		New Zealand	Compliant
634	KABKA	L503	Category R airspace to Category S FIR TOC Point	5NM	Auckland Oceanic	N/A		New Zealand	Compliant
635	GOPLU	M625	Category R airspace to Category S FIR TOC Point	5NM	Auckland Oceanic	N/A		New Zealand	Compliant
636	GOPLU	Q679	Category R airspace to Category S FIR TOC Point	5NM	Auckland Oceanic	N/A		New Zealand	Compliant
637	TANEN	M636	Category R airspace to Category S FIR TOC Point	5NM	Auckland Oceanic	N/A		New Zealand	Compliant

S/No.	TOC Points	ATS Routes	Category of Airspace to FIR TOC Point (Inbound only)	Minimum horizontal separation standard	Inbound Transferring FIR	Auto hand-off surveillance data-sharing overlapping coverage at the TOC point : Yes or No	Remarks/Route Restrictions	Accepting State, FIR	Seamless ANS Plan compliance?
638	TANEN	Q559	Category R airspace to Category S FIR TOC Point	5NM	Auckland Oceanic	N/A		New Zealand	Compliant
639	GULUT	M639	Category R airspace to Category S FIR TOC Point	5NM	Auckland Oceanic	N/A		New Zealand	Compliant
640	GULUT	Q651	Category R airspace to Category S FIR TOC Point	5NM	Auckland Oceanic	N/A		New Zealand	Compliant
641	VELMO	L513	Category R airspace to Category S FIR TOC Point	5NM	Auckland Oceanic	N/A		New Zealand	Compliant
642	PEBLU	Q619	Category R airspace to Category S FIR TOC Point	5NM	Auckland Oceanic	N/A		New Zealand	Compliant
643	PEBLU	N759	Category R airspace to Category S FIR TOC Point	5NM	Auckland Oceanic	N/A		New Zealand	Compliant
644	LUNBI	Y683	Category R airspace to Category S FIR TOC Point	5NM	Auckland Oceanic	N/A		New Zealand	Compliant
645	LUNBI	L521	Category R airspace to Category S FIR TOC Point	5NM	Auckland Oceanic	N/A		New Zealand	Compliant
646	UPLAR	L326	Category R airspace to Category S FIR TOC Point	5NM	Auckland Oceanic	N/A		New Zealand	Compliant
647	UPLAR	Q537	Category R airspace to Category S FIR TOC Point	5NM	Auckland Oceanic	N/A		New Zealand	Compliant
648	UPLAR	A464	Category R airspace to Category S FIR TOC Point	5NM	Auckland Oceanic	N/A		New Zealand	Compliant
649	SALAG	A346	Category R airspace to Category S FIR TOC Point	5NM	Auckland Oceanic	N/A		New Zealand	Compliant
650	ELNOS	G591	Category R airspace to Category S FIR TOC Point	5NM	Auckland Oceanic	N/A		New Zealand	Compliant
651	DUGAN	A597	Category R airspace to Category S FIR TOC Point	5NM	Auckland Oceanic	N/A		New Zealand	Compliant
652	KALAG	A578	Category R airspace to Category S FIR TOC Point	5NM	Auckland Oceanic	N/A		New Zealand	Compliant
653	AGREX	A580	Category R airspace to Category S FIR TOC Point	5NM	Auckland Oceanic	N/A		New Zealand	Compliant
654	TARIB	G347	Category R airspace to Category S FIR TOC Point	5NM	Auckland Oceanic	N/A		New Zealand	Compliant
655	ELPAK	B575	Category R airspace to Category S FIR TOC Point	5NM	Auckland Oceanic	N/A		New Zealand	Compliant
656	AGEDU	Q912	Category R airspace to Category S FIR TOC Point	5NM	Auckland Oceanic	N/A		New Zealand	Compliant
657	IDSEM	Q947	Category R airspace to Category S FIR TOC Point	5NM	Auckland Oceanic	N/A		New Zealand	Compliant
658	DABAS	Q983	Category R airspace to Category S FIR TOC Point	5NM	Auckland Oceanic	N/A		New Zealand	Compliant
659	AKLOM	G594	Category R airspace to Category S FIR TOC Point	5NM	Auckland Oceanic	N/A		New Zealand	Compliant
660	OLBEX	G599	Category R airspace to Category S FIR TOC Point	5NM	Auckland Oceanic	N/A		New Zealand	Compliant
661	IBESO	R327	Category R airspace to Category S FIR TOC Point	5NM	Auckland Oceanic	N/A		New Zealand	Compliant
662	GOKAG	Q697	Category R airspace to Category S FIR TOC Point	5NM	Auckland Oceanic	N/A		New Zealand	Compliant
663	AVDEG	Q712	Category R airspace to Category S FIR TOC Point	5NM	Auckland Oceanic	N/A		New Zealand	Compliant
664	ATABU	Q611	Category R airspace to Category S FIR TOC Point	5NM	Auckland Oceanic	N/A		New Zealand	Compliant
665	LALAP	Q854	Category R airspace to Category S FIR TOC Point	5NM	Auckland Oceanic	N/A		New Zealand	Compliant
666	HELGE	A338	Category R airspace to Category S FIR TOC Point	5NM	Auckland Oceanic	N/A		New Zealand	Compliant
667	KABIM	P518	Category S airspace to Category S FIR TOC Point	50NM	Mumbai	Yes	Based on RNP10 Operation	Pakistan (Karachi)	Incompliant
668	SAPNA	M638/N519	Category S airspace to Category S FIR TOC Point	50NM	Mumbai	Yes	Based on RNP10 Operation	Pakistan (Karachi)	Incompliant
669	PARTY	G208	Category S airspace to Category S FIR TOC Point	50NM	Mumbai	Yes		Pakistan (Karachi)	Incompliant
670	TASOP	A325/B210	Category S airspace to Category S FIR TOC Point	50NM	Mumbai	Yes		Pakistan (Karachi)	Incompliant
671	RAMSA	R462	Category S airspace to Category S FIR TOC Point	50NM	Delhi	Yes		Pakistan (Karachi)	Incompliant
672	VIKIT	P628	Category S airspace to Category S FIR TOC Point	50NM	Delhi	Yes	Based on RNP10 Operation	Pakistan (Karachi)	Incompliant
673	MERUN	G202/R471/	Category S airspace to Category S FIR TOC Point	50NM	Delhi	Yes	Based on RNP10 Operation on Route L750	Pakistan (Karachi)	Incompliant
674	MERUN	G452/L750	Category S airspace to Category S FIR TOC Point	50NM	Delhi	Yes	Based on RNP10 Operation on Route L750	Pakistan (Karachi)	Incompliant
675	SERKA	N636/B466	Category R airspace to Category S FIR TOC Point	50NM	Kabul	No	Based on RNP10 Operation on route N636	Pakistan (Karachi)	Compliant
676	GADER	A453	Category R airspace to Category S FIR TOC Point	10 Mins	Kabul	No		Pakistan (Karachi)	Incompliant
677	PIRAN	A453	Category S airspace to Category S FIR TOC Point	10 Mins	Tehran	Yes		Pakistan (Karachi)	Incompliant
678	DERBO	G452	Category S airspace to Category S FIR TOC Point	50NM	Tehran	Yes		Pakistan (Karachi)	Incompliant
679	KEBUD	L124/G208	Category S airspace to Category S FIR TOC Point	50NM	Tehran	Yes	Based on RNAV5 Operation on route L124	Pakistan (Karachi)	Incompliant
680	ASVIB	G665	Category S airspace to Category S FIR TOC Point	50NM	Tehran	Yes		Pakistan (Karachi)	Incompliant
681	EGRON	A791	Category S airspace to Category S FIR TOC Point	50NM	Tehran	Yes		Pakistan (Karachi)	Incompliant
682	METBI	R462	Category S airspace to Category S FIR TOC Point	50NM	Tehran	Yes		Pakistan (Karachi)	Incompliant
683	ALPOR	M504	Category S airspace to Category S FIR TOC Point	5 Mins	Muscat	Yes	Based on surveillance	Pakistan (Karachi)	Incompliant
684	APELO	B505	Category S airspace to Category S FIR TOC Point	5 Mins	Muscat	Yes	Based on surveillance	Pakistan (Karachi)	Incompliant

S/No.	TOC Points	ATS Routes	Category of Airspace to FIR TOC Point (Inbound only)	Minimum horizontal separation standard	Inbound Transferring FIR	Auto hand-off surveillance data-sharing overlapping coverage at the TOC point : Yes or No	Remarks/Route Restrictions	Accepting State, FIR	Seamless ANS Plan compliance?
685	ALPOR	G216	Category S airspace to Category S FIR TOC Point	5 Mins	Muscat	Yes	Based on surveillance	Pakistan (Karachi)	Incompliant
686	GUGAL	M875	Category S airspace to Category S FIR TOC Point	50NM	Delhi	Yes	Based on RNP10 Operation	Pakistan (Lahore)	Incompliant
687	SULOM	466/L509 /T40	Category S airspace to Category S FIR TOC Point	50NM	Delhi	Yes	Based on RNP10 Operation on Route L509/T400	Pakistan (Lahore)	Incompliant
688	RABAN	A456	Category S airspace to Category S FIR TOC Point	10 Mins	Delhi	Yes		Pakistan (Lahore)	Incompliant
689	PURPA	G325/G206	Category S to Category R/S FIR TOC Point	10 Mins	Urumqi (China)	No	From TOC Point PURPA on route G206 80NM and on route G325 30NM category R (Topographic Problem) thereafter Category S in Lahore FIR	Pakistan (Lahore)	Incompliant
690	MOTMO	P500	Category S airspace to Category S FIR TOC Point	10 Mins	Dushanbe	Yes	Traffic is handover directly to Dushanbe ACC (Tajikistan FIR) due to shorter distance (12 NM) in Kabul FIR	Pakistan (Lahore)	Incompliant
691	DUGIN	G206	Category R airspace to Category S FIR TOC Point	10 Mins	Kabul	No	From TOC Point DUGIN on route G206 124NM Category S thereafter Category R (Topographic Problem) in Lahore FIR upto TOC Point PURPA	Pakistan (Lahore)	Incompliant
692	LAJAK	L509/M881	Category R airspace to Category S FIR TOC Point	50NM	Kabul	No	Based on RNP10 Operation/ ATM Contingency is currently effective in Kabul FIR	Pakistan (Lahore)	Compliant
693	LAJAK	M875/A466	Category R airspace to Category S FIR TOC Point	50NM	Kabul	No	Based on RNP10 Operation/ ATM Contingency is currently effective in Kabul FIR	Pakistan (Lahore)	Compliant
694	DOBAT	N644	Category R airspace to Category S FIR TOC Point	50NM	Kabul	No	Based on RNP10 Operation	Pakistan (Lahore)	Compliant
695	BIROS	L750	Category R airspace to Category S FIR TOC Point	50NM	Kabul	No	Based on RNP10 Operation	Pakistan (Lahore)	Compliant
696	RIMPA	G202	Category R airspace to Category S FIR TOC Point	10 Mins	Kabul	No		Pakistan (Lahore)	Incompliant
697	ASLUM	P628	Category R airspace to Category S FIR TOC Point	50NM	Kabul	No	Based on RNP10 Operation	Pakistan (Lahore)	Compliant
698	NOMAN	A461/M501	Category S airspace to Category S FIR TOC Point	30NM	Hong Kong	No	30NM spacing requires RNP4.	Philippines	Incompliant
699	SABNO	A583	Category R/S airspace to Category R FIR TOC Point	30NM	Hong Kong	No	30NM spacing requires RNP4 and ADS-C /CPDLC	Philippines	Compliant
700	ARESI	L625	Category R/S airspace to Category R FIR TOC Point	80NM or 10 Mins MNT	Ho Chi Minh	No		Philippines	Incompliant
701	ARESI	L628	Category R/S airspace to Category R FIR TOC Point	80NM or 10 Mins MNT	Ho Chi Minh	No		Philippines	Incompliant
702	PANDI	M765	Category R/S airspace to Category R FIR TOC Point	80NM or 10 Mins MNT	Ho Chi Minh	No		Philippines	Incompliant
703	LAXOR	N884	Category R airspace to Category S FIR TOC Point	30NM	Singapore	Yes	30NM spacing requires RNP4.	Philippines	Compliant
704	LAXOR	M772	Category R airspace to Category S FIR TOC Point	80NM or 10 Mins MNT	Singapore	Yes	Surveillance coverage ends at DODUG.	Philippines	Incompliant
705	VINIK	M754	Category S airspace to Category S FIR TOC Point	80NM or 10 Mins MNT	Kota Kinabalu	Yes		Philippines	Incompliant
706	OSANU	M646	Category S airspace to Category S FIR TOC Point	50NM	Kota Kinabalu	Yes	50NM spacing requires RNP10/RNP.	Philippines	Incompliant
707	VIMAG	A341	Category S airspace to Category S FIR TOC Point	50NM	Kota Kinabalu	Yes	50NM spacing requires RNP10/RNP.	Philippines	Incompliant
708	GORAI	G578	Category S airspace to Category S FIR TOC Point	50NM	Ujung Pandang	Yes	50NM spacing requires RNP10/RNP.	Philippines	Incompliant
709	NITIP	A461	Category S airspace to Category S FIR TOC Point	50NM	Ujung Pandang	Yes	50NM spacing requires RNP10/RNP.	Philippines	Incompliant
710	SELSO	B472	Category S airspace to Category S FIR TOC Point	50NM	Ujung Pandang	Yes	50NM spacing requires RNP10/RNP.	Philippines	Incompliant
711	PEDNO	R590	Category S airspace to Category S FIR TOC Point	50NM	Ujung Pandang	Yes	50NM spacing subject to approval. Requires RNP10/RNP4.	Philippines	Incompliant
712	ELNIT	B473	Category R/S airspace to Category R FIR TOC Point	80NM or 10 Mins MNT	Ujung Pandang	No		Philippines	Incompliant
713	BIDOR	B462	Category R/S airspace to Category R FIR TOC Point	80NM or 10 Mins MNT	Ujung Pandang	No		Philippines	Incompliant
714	BOLUG	A339	Category R/S airspace to Category R FIR TOC Point	80NM or 10 Mins MNT	Ujung Pandang	No		Philippines	Incompliant
715	SHREE	A339	Category R/S airspace to Category R FIR TOC Point	80NM or 10 Mins MNT	Oakland	No		Philippines	Incompliant
716	ISGOG	R337	Category R/S airspace to Category R FIR TOC Point	50NM	Oakland	No	50NM spacing requires RNP10/RNP4 RCP240/RSP180	Philippines	Compliant
717	ENDAX	G467	Category R/S airspace to Category R FIR TOC Point	50NM	Oakland	No	50NM spacing requires RNP10/RNP4 RCP240/RSP180	Philippines	Compliant
718	LIMLE	M501	Category R/S airspace to Category R FIR TOC Point	50NM	Oakland	No	50NM spacing requires RNP10/RNP4 RCP240/RSP180	Philippines	Compliant
719	GURAG	A590	Category R/S airspace to Category R FIR TOC Point	80NM or 10 Mins MNT	Fukuoka	No	Already discussed with JCAB for possible reduction of separation.	Philippines	Incompliant
720	GURAG	G578	Category R/S airspace to Category R FIR TOC Point	80NM or 10 Mins MNT	Fukuoka	No	Already discussed with JCAB for possible reduction of separation.	Philippines	Incompliant
721	BISIG	A582	Category R/S airspace to Category R FIR TOC Point	80NM or 10 Mins MNT	Fukuoka	No		Philippines	Incompliant
722	MEVIN	B462	Category R airspace to Category S FIR TOC Point	80NM or 10 Mins MNT	Fukuoka	Yes	Radar surveillance and VHF radio coverage extends beyond Manila FIR. No AIDC with Fukuoka ACC.	Philippines	Incompliant
723	POTIB	M646	Category S airspace to Category S FIR TOC Point	30NM	Taipei	Yes	Spacing below 30NM requires prior approval with radar hand-over.	Philippines	Incompliant
724	KABAM	N892	Category S airspace to Category S FIR TOC Point	80NM or 10 Mins MNT	Taipei	Yes		Philippines	Incompliant

S/No.	TOC Points	ATS Routes	Category of Airspace to FIR TOC Point (Inbound only)	Minimum horizontal separation standard	Inbound Transferring FIR	Auto hand-off surveillance data-sharing overlapping coverage at the TOC point: Yes or No	Remarks/Route Restrictions	Accepting State, FIR	Seamless ANS Plan compliance?
725	SADLI	A593	Category S airspace to Category S FIR TOC Point	20 NM or 10 Mins MNT	Shanghai	Yes	20 NM for Other than northeast bound 10 Mins MNT for Northeast bound	ROK, Incheon	Incompliant
726	ATOTI	Y722	Category S airspace to Category S FIR TOC Point	30 NM	Fukuoka	Yes		ROK, Incheon	Incompliant
727	ONIKU	A593	Category S airspace to Category S FIR TOC Point	20 NM	Fukuoka	Yes	15nm(1150-2245UTC landing ZSPD)	ROK, Incheon	Incompliant
728	RUGMA	A586	Category S airspace to Category S FIR TOC Point	20 NM	Fukuoka	Yes	15nm(1400-2000UTC on Sunday)	ROK, Incheon	Incompliant
729	SAMDO	A595	Category S airspace to Category S FIR TOC Point	20 NM	Fukuoka	Yes	15nm(1400-2000UTC on Sunday)	ROK, Incheon	Incompliant
730	BESNA	Y781	Category S airspace to Category S FIR TOC Point	20 NM	Fukuoka	Yes	15nm(1400-2000UTC on Sunday)	ROK, Incheon	Incompliant
731	APELA	Y782	Category S airspace to Category S FIR TOC Point	20 NM	Fukuoka	Yes	15nm(1400-2000UTC on Sunday)	ROK, Incheon	Incompliant
732	INVOK	G339	Category S airspace to Category S FIR TOC Point	20 NM	Fukuoka	Yes	15nm(1400-2000UTC on Sunday)	ROK, Incheon	Incompliant
733	KALEK	Y206	Category S airspace to Category S FIR TOC Point	20 NM	Fukuoka	Yes	15nm(1400-2000UTC on Sunday)	ROK, Incheon	Incompliant
734	SAPRA	Y685	Category S airspace to Category S FIR TOC Point	20 NM	Fukuoka	Yes	15nm(1400-2000UTC on Sunday)	ROK, Incheon	Incompliant
735	LANAT	Y697	Category S airspace to Category S FIR TOC Point	20 NM	Fukuoka	Yes	15nm(1400-2000UTC on Sunday)	ROK, Incheon	Incompliant
736	IGLAS	Y332	Category S airspace to Category S FIR TOC Point	20 NM	Fukuoka	Yes	15nm(1400-2000UTC on Sunday)	ROK, Incheon	Incompliant
737	ANDOL	L512	Category S airspace to Category S FIR TOC Point	20 NM	Fukuoka	Yes	15nm(1400-2000UTC on Sunday)	ROK, Incheon	Incompliant
738	KANSU	B467	Category S airspace to Category S FIR TOC Point	17 NM	pyongyang	Yes		ROK, Incheon	Incompliant
739	AGAVO	Y697	Category S airspace to Category S FIR TOC Point	20 NM	Shanghai	Yes		ROK, Incheon	Incompliant
740	ARAMA	A464	Category S airspace to Category S FIR TOC Point	10NM	Kuala Lumpur	No		Singapore	Compliant
741	REKOP	A576	Category S airspace to Category S FIR TOC Point	10NM	Kuala Lumpur	No		Singapore	Compliant
742	ENPUX	B469	Category S airspace to Category S FIR TOC Point	20NM	Jakarta	No	For flights at or below FL370	Singapore	Compliant
743	ATLIR	B469	Category S airspace to Category S FIR TOC Point	20NM	Jakarta	No	For flights above FL370	Singapore	Compliant
744	90 DME PU	B469	Category S airspace to Category S FIR TOC Point	40NM	Kuala Lumpur	No		Singapore	Incompliant
745	UKASA	G334	Category S airspace to Category S FIR TOC Point	20NM	Kuala Lumpur	No		Singapore	Compliant
746	IRSAB	G334	Category S airspace to Category S FIR TOC Point	20NM	Jakarta	No		Singapore	Compliant
747	PARDI	G579	Category S airspace to Category S FIR TOC Point	20NM	Jakarta	No	For flights at or below FL370	Singapore	Compliant
748	OLNUB	G579	Category S airspace to Category S FIR TOC Point	20NM	Jakarta	No	For flights above FL370	Singapore	Compliant
749	DODSO	G580	Category S airspace to Category S FIR TOC Point	20NM	Jakarta	No	For flights at or below FL370	Singapore	Compliant
750	DOWON	G580	Category S airspace to Category S FIR TOC Point	20NM	Jakarta	No	For flights above FL370	Singapore	Compliant
751	GULIB	L517	Category R/S airspace to Category R FIR TOC Point	10 Mins MNT	Kota Kinabalu	No		Singapore	Incompliant
752	VPK	L629	Category S airspace to Category S FIR TOC Point	20NM	Kuala Lumpur	No		Singapore	Compliant
753	ESPOB	L642	Category S airspace to Category S FIR TOC Point	20NM	Ho Chi Minh	No		Singapore	Compliant
754	DUDIS	L644	Category S airspace to Category S FIR TOC Point	10 Mins MNT	Ho Chi Minh	No		Singapore	Incompliant
755	DAKIX	L649	Category R/S airspace to Category R FIR TOC Point	10 Mins MNT	Kota Kinabalu	No		Singapore	Incompliant
756	MIBEL	L762	Category S airspace to Category S FIR TOC Point	20NM	Jakarta	No	For flights at or below FL370	Singapore	Compliant
757	VINIK	M522	Category R/S airspace to Category R FIR TOC Point	N/A	Manila	N/A	Portion of M522 within Singapore FIR delegated to Kota Kinabalu ACC for provision of ATS	Singapore	Compliant
758	NODIN	M522	Category R/S airspace to Category R FIR TOC Point	N/A	Kota Kinabalu	N/A	Portion of M522 within Singapore FIR delegated to Kota Kinabalu ACC for provision of ATS	Singapore	Compliant
759	SUKRI	M630	Category S airspace to Category S FIR TOC Point	10NM	Kuala Lumpur	No	For flights at or below FL370	Singapore	Compliant
760	INVUB	M635	Category S airspace to Category S FIR TOC Point	20NM	Jakarta	No	For flights at or below FL370	Singapore	Compliant
761	UNSID	M635	Category S airspace to Category S FIR TOC Point	20NM	Jakarta	No	For flights above FL370	Singapore	Compliant
762	VENUN	M646	Category S airspace to Category S FIR TOC Point	20NM	Jakarta	No	For flights at or below FL370	Singapore	Compliant
763	IPRIX	M753	Category S airspace to Category S FIR TOC Point	20NM	Ho Chi Minh	No		Singapore	Compliant
764	SUMLA	M754	Category R/S airspace to Category R FIR TOC Point	N/A	Kota Kinabalu	N/A	Portion of M754 within Singapore FIR delegated to Kota Kinabalu ACC for provision of ATS	Singapore	Compliant
765	VINIK	M754	Category R/S airspace to Category R FIR TOC Point	N/A	Manila	N/A	Portion of M754 within Singapore FIR delegated to Kota Kinabalu ACC for provision of ATS	Singapore	Compliant
766	VPK	M758	Category S airspace to Category S FIR TOC Point	20NM	Kuala Lumpur	No		Singapore	Compliant
767	OLKIT	M758	Category R/S airspace to Category R FIR TOC Point	10 Mins MNT	Kota Kinabalu	No		Singapore	Incompliant
768	UPVUN	M758	Category R/S airspace to Category R FIR TOC Point	20NM	Jakarta	No		Singapore	Compliant
769	VPK	M761	Category S airspace to Category S FIR TOC Point	20NM	Kuala Lumpur	No		Singapore	Compliant
770	OSERU	M761	Category S airspace to Category S FIR TOC Point	20NM	Jakarta	No	For flights at or below FL370	Singapore	Compliant
771	OBPVA	M761	Category S airspace to Category S FIR TOC Point	20NM	Jakarta	No	For flights above FL370	Singapore	Compliant
772	IGARI	M765	Category S airspace to Category S FIR TOC Point	N/A	Ho Chi Minh	N/A	Portion of M765 within the Singapore FIR delegated to Kuala Lumpur ACC for provision of ATS	Singapore	Compliant
773	TEGID	M767	Category R/S airspace to Category R FIR TOC Point	30NM based on RNP4 operations	Manila	No		Singapore	Compliant
774	NIXEB	M767	Category S airspace to Category S FIR TOC Point	20NM	Jakarta	No	For flights at or below FL370	Singapore	Compliant

S/No.	TOC Points	ATS Routes	Category of Airspace to FIR TOC Point (Inbound only)	Minimum horizontal separation standard	Inbound Transferring FIR	Auto hand-off surveillance data-sharing overlapping coverage at the TOC point : Yes or No	Remarks/Route Restrictions	Accepting State, FIR	Seamless ANS Plan compliance?
775	AKMON	M768	Category R/S airspace to Category R FIR TOC Point	50NM based on RNP10 operations	Ho Chi Minh	No		Singapore	Compliant
776	ASISU	M768	Category R/S airspace to Category R FIR TOC Point	50NM based on RNP10 operations	Kota Kinabalu	No		Singapore	Compliant
777	ASISU	M772	Category R/S airspace to Category R FIR TOC Point	10 Mins MNT	Kota Kinabalu	No		Singapore	Incompliant
778	OTLAL	M774	Category S airspace to Category S FIR TOC Point	20NM	Jakarta	No	For flights at or below FL370	Singapore	Compliant
779	TIDAR	M904	Category S airspace to Category S FIR TOC Point	10 Mins MNT	Bangkok	No		Singapore	Incompliant
780	AKDAT	N875	Category S airspace to Category S FIR TOC Point	10 Mins MNT	Jakarta	No		Singapore	Incompliant
781	IGARI	N891	Category S airspace to Category S FIR TOC Point	10 Mins MNT	Ho Chi Minh	No		Singapore	Incompliant
782	MELAS	N892	Category S airspace to Category S FIR TOC Point	20NM	Ho Chi Minh	No		Singapore	Compliant
783	ARAMA	P501	Category S airspace to Category S FIR TOC Point	10NM	Kuala Lumpur	No		Singapore	Compliant
784	IGARI	R208	Category S airspace to Category S FIR TOC Point	N/A	Ho Chi Minh	N/A	Portion of R208 within the Singapore FIR released to Kuala Lumpur ACC daily subject to coordination between Singapore ACC and Lumpur ACC.	Singapore	Compliant
785	IKUKO	R208	Category S airspace to Category S FIR TOC Point	N/A	Kuala Lumpur	N/A	Portion of R208 within the Singapore FIR released to Kuala Lumpur ACC daily subject to coordination between Singapore ACC and Lumpur ACC.	Singapore	Compliant
786	TAROS	R469	Category S airspace to Category S FIR TOC Point	20NM	Jakarta	No	For flights at or below FL370	Singapore	Compliant
787	BIKOK	N640/M641	Category S airspace to Category S FIR TOC Point	50NM/30NM * TFC landing at Sri Lanka	Chennai	No	RNP10 aircraft, prior coordination	Sri Lanka	Incompliant
788	IDIBI	G325	Category S airspace to Category S FIR TOC Point	50NM	Chennai	No	RNP10 aircraft, prior coordination	Sri Lanka	Incompliant
789	ATETA	M300	Category S airspace to Category S FIR TOC Point	50NM	Chennai	No	RNP10 aircraft, prior coordination	Sri Lanka	Incompliant
790	SAGOR	A465	Category S airspace to Category S FIR TOC Point	50NM/30NM * TFC landing at Sri Lanka	Chennai	No	RNP10 aircraft, prior coordination	Sri Lanka	Incompliant
791	DUGOS	P762	Category R airspace to Category S FIR TOC Point	50NM	Chennai	No	RNP10 aircraft, prior coordination	Sri Lanka	Compliant
792	SULTO	L645	Category R/S airspace to Category R FIR TOC Point	50NM	Chennai	No	RNP10 aircraft, prior coordination	Sri Lanka	Compliant
793	SEBLO	G465	Category R airspace to Category S FIR TOC Point	50NM/30NM * TFC landing at Sri Lanka	Male	Yes	RNP10 aircraft, prior coordination	Sri Lanka	Compliant
794	TELIG	M512	Category R airspace to Category S FIR TOC Point	50NM/30NM * TFC landing at Sri Lanka	Male	Yes	RNP10 aircraft, prior coordination	Sri Lanka	Compliant
795	PADLA	G454	Category R airspace to Category S FIR TOC Point	50NM/30NM * TFC landing at Sri Lanka	Male	Yes	RNP10 aircraft, prior coordination	Sri Lanka	Compliant
796	MANRU	M513	Category R airspace to Category S FIR TOC Point	50NM/30NM * TFC landing at Sri Lanka	Male	No	RNP10 aircraft, prior coordination	Sri Lanka	Compliant
797	SUNAN	L894	Category R/S airspace to Category R FIR TOC Point	50NM	Male	No	RNP10 aircraft, prior coordination	Sri Lanka	Compliant
798	UBKIN	P756	Category R airspace to Category S FIR TOC Point	50NM	Male	No	RNP10 aircraft, prior coordination	Sri Lanka	Compliant
799	TOPIN	M300	Category R/S airspace to Category R FIR TOC Point	50NM	Jakarta	No	RNP10 aircraft, prior coordination	Sri Lanka	Compliant
800	NIXUL	P627	Category R/S airspace to Category R FIR TOC Point	50NM	Jakarta	No	RNP10 aircraft, prior coordination	Sri Lanka	Compliant
801	NIXUL	P570	Category R/S airspace to Category R FIR TOC Point	50NM	Jakarta	No	RNP10 aircraft, prior coordination	Sri Lanka	Compliant
802	NISOK	P756	Category R/S airspace to Category R FIR TOC Point	50NM	Jakarta	No	RNP10 aircraft, prior coordination	Sri Lanka	Compliant
803	NISOK	L896	Category R/S airspace to Category R FIR TOC Point	50NM	Jakarta	No	RNP10 aircraft, prior coordination	Sri Lanka	Compliant
804	SELSU	M766	Category R/S airspace to Category R FIR TOC Point	50NM	Jakarta	No	RNP10 aircraft, prior coordination	Sri Lanka	Compliant
805	KETIV	L897	Category R/S airspace to Category R FIR TOC Point	50NM	Jakarta	No	RNP10 aircraft, prior coordination	Sri Lanka	Compliant
806	KETIV	N628	Category R/S airspace to Category R FIR TOC Point	50NM	Jakarta	No	RNP10 aircraft, prior coordination	Sri Lanka	Compliant
807	KETIV	L774	Category R/S airspace to Category R FIR TOC Point	50NM	Jakarta	No	RNP10 aircraft, prior coordination	Sri Lanka	Compliant
808	ELATI	N640	Category R/S airspace to Category R FIR TOC Point	50NM	Australia	No	RNP10 aircraft, prior coordination	Sri Lanka	Compliant
809	DOGAR	M641	Category R/S airspace to Category R FIR TOC Point	50NM	Australia	No	RNP10 aircraft, prior coordination	Sri Lanka	Compliant
810	KADAP	P627	Category R/S airspace to Category R FIR TOC Point	50NM	Australia	No	RNP10 aircraft, prior coordination	Sri Lanka	Compliant
811	DADAR	N628	Category R/S airspace to Category R FIR TOC Point	50NM	Australia	No	RNP10 aircraft, prior coordination	Sri Lanka	Compliant
812	DADAR	L894	Category R/S airspace to Category R FIR TOC Point	50NM	Australia	No	RNP10 aircraft, prior coordination	Sri Lanka	Compliant
813	BASUR	P570	Category S airspace to Category S FIR TOC Point	50NM	Chennai	No	RNP10 aircraft, prior coordination	Sri Lanka	Incompliant
814	DEMON	R461	Category S airspace to Category S FIR TOC Point	50NM	Chennai	No	RNP10 aircraft, prior coordination	Sri Lanka	Incompliant
815	OMURO	G474	Category S airspace to Category S FIR TOC Point	20NM*	Phnom Penh FIR	Yes	Surveillance spacing	Thailand	Incompliant
816	TUPGO	M633	Category S airspace to Category S FIR TOC Point	20NM*	Phnom Penh FIR	Yes	Surveillance spacing	Thailand	Incompliant
817	BENSA	N891	Category R airspace to Category S FIR TOC Point	10 Mins	Phnom Penh FIR	No		Thailand	Incompliant
818	VAPVU	P629	Category S airspace to Category S FIR TOC Point	20NM*	Phnom Penh FIR	Yes	Surveillance spacing	Thailand	Incompliant

S/No.	TOC Points	ATS Routes	Category of Airspace to FIR TOC Point (Inbound only)	Minimum horizontal separation standard	Inbound Transferring FIR	Auto hand-off surveillance data-sharing overlapping coverage at the TOC point : Yes or No	Remarks/Route Restrictions	Accepting State, FIR	Seamless ANS Plan compliance?
819	BOKAK	R468	Category S airspace to Category S FIR TOC Point	20NM*	Phnom Penh FIR	Yes	Surveillance spacing	Thailand	Incompliant
820	SAKDA	R334 R575	Category S airspace to Category S FIR TOC Point	20NM*	Phnom Penh FIR	Yes	Surveillance spacing	Thailand	Incompliant
821	BASIT	R588	Category S airspace to Category S FIR TOC Point	20NM*	Phnom Penh FIR	Yes	Surveillance spacing	Thailand	Incompliant
822	BIDEM	R345	Category S airspace to Category S FIR TOC Point	20NM*	Phnom Penh FIR	Yes	Surveillance spacing	Thailand	Incompliant
823	BUTRA	A1	Category S airspace to Category S FIR TOC Point	20NM*	Vientiane FIR	Yes	Surveillance spacing	Thailand	Incompliant
824	SAV	A202 B460	Category S airspace to Category S FIR TOC Point	20NM*	Vientiane FIR	Yes	Surveillance spacing	Thailand	Incompliant
825	PONUJ	A581	Category S airspace to Category S FIR TOC Point	40NM	Vientiane FIR	Yes	Surveillance spacing	Thailand	Incompliant
826	PAK	B202	Category S airspace to Category S FIR TOC Point	30NM	Vientiane FIR	Yes	Surveillance spacing	Thailand	Incompliant
827	YAKUA	B346	Category S airspace to Category S FIR TOC Point	40NM	Vientiane FIR	Yes	Surveillance spacing FL300 or above	Thailand	Incompliant
828	YAKUA	B346	Category S airspace to Category S FIR TOC Point	20NM*	Vientiane FIR	Yes	Surveillance spacing applied to flights between BKK-LPB	Thailand	Incompliant
829	BOPNU	M648	Category S airspace to Category S FIR TOC Point	30NM, 20NM*	Vientiane FIR	Yes		Thailand	Incompliant
830	ANBOK	R207	Category S airspace to Category S FIR TOC Point	10 Mins	Vientiane FIR	Yes		Thailand	Incompliant
831	TOMIP	R215	Category S airspace to Category S FIR TOC Point	40NM	Vientiane FIR	Yes	Surveillance spacing FL300 or above	Thailand	Incompliant
832	TOMIP	R215	Category S airspace to Category S FIR TOC Point	20NM*	Vientiane FIR	Yes	Surveillance spacing	Thailand	Incompliant
833	VTN	474/B218/R47	Category S airspace to Category S FIR TOC Point	30NM	Vientiane FIR	Yes		Thailand	Incompliant
834	DALAN	B579	Category S airspace to Category S FIR TOC Point	20NM	Kuala Lumpur FIR	Yes	Surveillance spacing	Thailand	Incompliant
835	DUBAX	R325	Category S airspace to Category S FIR TOC Point	20NM	Kuala Lumpur FIR	Yes	Surveillance spacing	Thailand	Incompliant
836	TAMOS	A457	Category S airspace to Category S FIR TOC Point	20NM	Kuala Lumpur FIR	Yes	Surveillance spacing	Thailand	Incompliant
837	KARMI	A464	Category S airspace to Category S FIR TOC Point	20NM	Kuala Lumpur FIR	Yes	Surveillance spacing	Thailand	Incompliant
838	RIGTO	M769	Category S airspace to Category S FIR TOC Point	20NM	Kuala Lumpur FIR	Yes	Surveillance spacing	Thailand	Incompliant
839	SAPAM	L645	Category R airspace to Category S FIR TOC Point	10 Mins	Kuala Lumpur FIR	No		Thailand	Incompliant
840	RUSET	P627	Category R airspace to Category S FIR TOC Point	10 Mins	Kuala Lumpur FIR	No		Thailand	Incompliant
841	ABTOK	M644	Category S airspace to Category S FIR TOC Point	20NM	Kuala Lumpur FIR	Yes	Surveillance spacing	Thailand	Incompliant
842	KADAX	M626	Category S airspace to Category S FIR TOC Point	20NM	Kuala Lumpur FIR	Yes	Surveillance spacing	Thailand	Incompliant
843	PASVA	A334	Category S airspace to Category S FIR TOC Point	20NM	Kuala Lumpur FIR	Yes	Surveillance spacing	Thailand	Incompliant
844	GOLUD	M751	Category S airspace to Category S FIR TOC Point	20NM	Kuala Lumpur FIR	Yes	Surveillance spacing	Thailand	Incompliant
845	TIDAR	M904	Category R airspace to Category S FIR TOC Point	10 Mins	Kuala Lumpur FIR	No		Thailand	Incompliant
846	SISUK	R207	Category R airspace to Category S FIR TOC Point	10 Mins	Yangon FIR	No		Thailand	Incompliant
847	BOMAS	A581	Category S airspace to Category S FIR TOC Point	30NM, 20 NM*	Yangon FIR	Yes	Surveillance spacing	Thailand	Incompliant
848	MAKAS	G473	Category S airspace to Category S FIR TOC Point	30NM, 20 NM*	Yangon FIR	Yes	Surveillance spacing	Thailand	Incompliant
849	BETNO	G463	Category S airspace to Category S FIR TOC Point	30NM, 20 NM*	Yangon FIR	Yes	Surveillance spacing	Thailand	Incompliant
850	PADET	G331	Category R airspace to Category S FIR TOC Point	10 Mins, 7 Mins	Yangon FIR	No	7 Mins applied for DEST. VTSP	Thailand	Incompliant
851	LUDVI	L507	Category S airspace to Category S FIR TOC Point	30NM, 20 NM*	Yangon FIR	Yes		Thailand	Incompliant
852	BETNO	P646	Category S airspace to Category S FIR TOC Point	30NM, 20 NM*	Yangon FIR	Yes		Thailand	Incompliant
853	NURDA	L524	Category S airspace to Category S FIR TOC Point	30NM, 20 NM*	Yangon FIR	Yes		Thailand	Incompliant
854	PUMOR	L877	Category S airspace to Category S FIR TOC Point	30NM, 20 NM*	Yangon FIR	Yes		Thailand	Incompliant
855	TANEK	L301	Category S airspace to Category S FIR TOC Point	30NM, 20 NM*	Yangon FIR	Yes		Thailand	Incompliant
856	AKATO	M502	Category S airspace to Category S FIR TOC Point	30NM, 20 NM*	Yangon FIR	Yes		Thailand	Incompliant
857	EKAVO	M626	Category R airspace to Category S FIR TOC Point	10 Mins, 7 Mins	Yangon FIR	No	7 Mins applied for DEST. VTSP	Thailand	Incompliant
858	TAVUN	L759	Category R airspace to Category S FIR TOC Point	10 Mins, 7 Mins	Yangon FIR	No	7 Mins applied for DEST. VTSP	Thailand	Incompliant
859	IKULA	L515	Category R airspace to Category S FIR TOC Point	10 Mins, 7 Mins	Yangon FIR	No	7 Mins applied for DEST. VTSP	Thailand	Incompliant
860	PASRO	A590	Category R/S airspace to Category R FIR TOC Point	23 NM Lateral and 30 NM longitudinal	Fukuoka Oceanic FIR			USA, Anchorage Oceanic	Compliant
861	AKISU	UPRs	Category R/S airspace to Category R FIR TOC Point	23 NM Lateral and 30 NM longitudinal	Fukuoka Oceanic FIR		There is no longer an ATS route over AKISU, ATS Route R591 was deleted to open more airspace for UPRs.	USA, Anchorage Oceanic	Compliant
862	CUTEE	UPRs	Category R/S airspace to Category R FIR TOC Point	23 NM Lateral and 30 NM longitudinal	Fukuoka Oceanic FIR		There is no longer an ATS route over CUTEE, ATS Route G344 was deleted to open more airspace for UPRs.	USA, Anchorage Oceanic	Compliant

S/No.	TOC Points	ATS Routes	Category of Airspace to FIR TOC Point (Inbound only)	Minimum horizontal separation standard	Inbound Transferring FIR	Auto hand-off surveillance data-sharing overlapping coverage at the TOC point : Yes or No	Remarks/Route Restrictions	Accepting State, FIR	Seamless ANS Plan compliance?
863	ALL	N/A UPRs	Category R/S airspace to Category R FIR TOC Point	23 NM Lateral and 30 NM longitudinal	Oakland Oceanic FIR		There are no routes that cross this FIR boundary. All aircraft are on User Preferred Random Routes	USA, Anchorage Oceanic	Compliant
864	AAMYY	R451	Category R/S airspace to Category R FIR TOC Point	23 NM Lateral and 30 NM longitudinal	Anchorage Continental FIR		Waypoint AAMYY is close to the FIR Boundary but not on the FIR	USA, Anchorage Oceanic	Compliant
865	PLADO	A590, G215	Category R/S airspace to Category R FIR TOC Point	23 NM Lateral and 30 NM longitudinal	Anchorage Continental FIR		Waypoint PLADO is close to the FIR Boundary but not on the FIR	USA, Anchorage Oceanic	Compliant
866	OPAKE	R580, A342	Category R/S airspace to Category R FIR TOC Point	23 NM Lateral and 30 NM longitudinal	Anchorage Continental FIR			USA, Anchorage Oceanic	Compliant
867	NYMPH	A342, G469	Category R/S airspace to Category R FIR TOC Point	23 NM Lateral and 30 NM longitudinal	Anchorage Continental FIR		Waypoint NYMPH is close to the FIR Boundary but not on the FIR	USA, Anchorage Oceanic	Compliant
868	KUNAD	No route in the Anchorage Oceanic FIR	Category R/S airspace to Category R FIR TOC Point	23 NM Lateral and 30 NM longitudinal	Petropavlovsk Kamchatsky FIR		There are no routes that cross this FIR boundary. All aircraft are on User Preferred Random Routes after entering the Anchorage Oceanic FIR.	USA, Anchorage Oceanic	Compliant
869	LUMES	No route in the Anchorage Oceanic FIR	Category R/S airspace to Category R FIR TOC Point	23 NM Lateral and 30 NM longitudinal	Petropavlovsk Kamchatsky FIR		There are no routes that cross this FIR boundary. All aircraft are on User Preferred Random Routes after entering the Anchorage Oceanic FIR.	USA, Anchorage Oceanic	Compliant
870	ALL	N/A UPRs	Category R/S airspace to Category R FIR TOC Point	23 NM Lateral and 30 NM Longitudinal	Anchorage Continental FIR		There are no routes that cross this FIR boundary. All aircraft are on User Preferred Random Routes	USA, Oakland Oceanic	Compliant
871	ALL	N/A UPRs	Category R/S airspace to Category R FIR TOC Point	23 NM Lateral and 30 NM Longitudinal	Anchorage Oceanic FIR		There are no routes that cross this FIR boundary. All aircraft are on User Preferred Random Routes	USA, Oakland Oceanic	Compliant
872	BEEBO	G223	Category R/S airspace to Category R FIR TOC Point	23 NM Lateral and 30 NM Longitudinal	Fukuoka Oceanic FIR			USA, Oakland Oceanic	Compliant
873	ATIGO	B452	Category R/S airspace to Category R FIR TOC Point	23 NM Lateral and 30 NM Longitudinal	Fukuoka Oceanic FIR			USA, Oakland Oceanic	Compliant
874	TEGOD	A337	Category R/S airspace to Category R FIR TOC Point	23 NM Lateral and 30 NM Longitudinal	Fukuoka Oceanic FIR			USA, Oakland Oceanic	Compliant
875	OMLET	B586	Category R/S airspace to Category R FIR TOC Point	23 NM Lateral and 30 NM Longitudinal	Fukuoka Oceanic FIR			USA, Oakland Oceanic	Compliant
876	MONPI	A597	Category R/S airspace to Category R FIR TOC Point	23 NM Lateral and 30 NM Longitudinal	Fukuoka Oceanic FIR			USA, Oakland Oceanic	Compliant
877	PAKDO	G339	Category R/S airspace to Category R FIR TOC Point	23 NM Lateral and 30 NM Longitudinal	Fukuoka Oceanic FIR			USA, Oakland Oceanic	Compliant
878	KEITH	339, R584, R59	Category R/S airspace to Category R FIR TOC Point	23 NM Lateral and 30 NM Longitudinal	Fukuoka Oceanic FIR			USA, Oakland Oceanic	Compliant
879	Random crossing Points	UPRs	Category R/S airspace to Category R FIR TOC Point	23 NM Lateral and 30 NM Longitudinal	Fukuoka Oceanic FIR		There are long segments of the FIR boundary without routes or waypoints on the boundary. Aircraft may flight plan optimized User Preferred Routes crossing the FIR with the 30 NM separation..	USA, Oakland Oceanic	Compliant
880	LIMLE	M501	Category R/S airspace to Category R FIR TOC Point	30 NM	Manila FIR		Oakland Oceanic also accepts UPRs crossing the Manila FIR Boundary with the 30 NM separation.	USA, Oakland Oceanic	Compliant
881	ENDAX	G467	Category R/S airspace to Category R FIR TOC Point	30 NM	Manila FIR		Oakland Oceanic also accepts UPRs crossing the Manila FIR Boundary	USA, Oakland Oceanic	Compliant
882	ISGOG	R337	Category R/S airspace to Category R FIR TOC Point	30 NM	Manila FIR		Oakland Oceanic also accepts UPRs crossing the Manila FIR Boundary with the 30 NM separation.	USA, Oakland Oceanic	Compliant
883	OLBIE	M576	Category R/S airspace to Category R FIR TOC Point	30 NM	Manila FIR		Oakland Oceanic also accepts UPRs crossing the Manila FIR Boundary with the 30 NM separation.	USA, Oakland Oceanic	Compliant
884	SHREE	339, R584, R59	Category R/S airspace to Category R FIR TOC Point	30 NM	Manila FIR		Oakland Oceanic also accepts UPRs crossing the Manila FIR Boundary with the 30 NM separation.	USA, Oakland Oceanic	Compliant
885	CAHYO	A450	Category R/S airspace to Category R FIR TOC Point	30 NM	Ujung Pandang FIR		Oakland Oceanic also accepts UPRs crossing the Ujung Pandang FIR Boundary with the 30 NM separation.	USA, Oakland Oceanic	Compliant
886	KALIN	R204	Category R/S airspace to Category R FIR TOC Point	30 NM	Port Moresby FIR		Oakland Oceanic also accepts UPRs crossing the Port Moresby FIR Boundary with the 30 NM separation.	USA, Oakland Oceanic	Compliant
887	FACED	A216	Category R/S airspace to Category R FIR TOC Point	30 NM	Port Moresby FIR		Oakland Oceanic also accepts UPRs crossing the Port Moresby FIR Boundary with the 30 NM separation.	USA, Oakland Oceanic	Compliant
888	PIKOK	B586	Category R/S airspace to Category R FIR TOC Point	30 NM	Port Moresby FIR		Oakland Oceanic also accepts UPRs crossing the Port Moresby FIR Boundary with the 30 NM separation.	USA, Oakland Oceanic	Compliant
889	RUTUS	G205	Category R/S airspace to Category R FIR TOC Point	30 NM	Port Moresby FIR		Oakland Oceanic also accepts UPRs crossing the Port Moresby FIR Boundary with the 30 NM separation.	USA, Oakland Oceanic	Compliant
890	ADBON	A597	Category R/S airspace to Category R FIR TOC Point	30 NM	Port Moresby FIR		Oakland Oceanic also accepts UPRs crossing the Port Moresby FIR Boundary with the 30 NM separation.	USA, Oakland Oceanic	Compliant

S/No.	TOC Points	ATS Routes	Category of Airspace to FIR TOC Point (Inbound only)	Minimum horizontal separation standard	Inbound Transferring FIR	Auto hand-off surveillance data-sharing overlapping coverage at the TOC point : Yes or No	Remarks/Route Restrictions	Accepting State, FIR	Seamless ANS Plan compliance?
891	DOHRT	B452	Category R/S airspace to Category R FIR TOC Point	30 NM	Port Moresby FIR		Oakland Oceanic also accepts UPRs crossing the Port Moresby FIR Boundary with the 30 NM separation.	USA, Oakland Oceanic	Compliant
892	FENSE	A578	Category R/S airspace to Category R FIR TOC Point	30 NM	Nauru FIR		Oakland Oceanic also accepts UPRs crossing the Nauru FIR Boundary with the 30 NM separation.	USA, Oakland Oceanic	Compliant
893	MUBIT	G223	Category R/S airspace to Category R FIR TOC Point	30 NM	Nauru FIR		Oakland Oceanic also accepts UPRs crossing the Nauru FIR Boundary with the 30 NM separation.	USA, Oakland Oceanic	Compliant
894	ELNUR	B589	Category R/S airspace to Category R FIR TOC Point	30 NM	Nauru FIR		Oakland Oceanic also accepts UPRs crossing the Nauru FIR Boundary with the 30 NM separation.	USA, Oakland Oceanic	Compliant
895	MARTI	A598	Category R/S airspace to Category R FIR TOC Point	30 NM	Nauru FIR		Oakland Oceanic also accepts UPRs crossing the Nauru FIR Boundary with the 30 NM separation.	USA, Oakland Oceanic	Compliant
896	VAVEE	R332	Category R/S airspace to Category R FIR TOC Point	30 NM	Nadi FIR		Oakland Oceanic also accepts UPRs crossing the Nadi FIR Boundary with the 30 NM separation.	USA, Oakland Oceanic	Compliant
897	NIXAM	B326	Category R/S airspace to Category R FIR TOC Point	30 NM	Nadi FIR		Oakland Oceanic also accepts UPRs crossing the Nadi FIR Boundary with the 30 NM separation.	USA, Oakland Oceanic	Compliant
898	ARTOP	B474	Category R/S airspace to Category R FIR TOC Point	30 NM	Nadi FIR		Oakland Oceanic also accepts UPRs crossing the Nadi FIR Boundary with the 30 NM separation.	USA, Oakland Oceanic	Compliant
899	BOILS	B580	Category R/S airspace to Category R FIR TOC Point	30 NM	Nadi FIR		Oakland Oceanic also accepts UPRs crossing the Nadi FIR Boundary with the 30 NM separation.	USA, Oakland Oceanic	Compliant
900	CUFFY	A579	Category R/S airspace to Category R FIR TOC Point	30 NM	Nadi FIR		Oakland Oceanic also accepts UPRs crossing the Nadi FIR Boundary with the 30 NM separation.	USA, Oakland Oceanic	Compliant
901	DUNEY	G347	Category R/S airspace to Category R FIR TOC Point	30 NM	Auckland Oceanic		Oakland Oceanic also accepts UPRs crossing the Auckland Oceanic FIR Boundary with the 30 NM separation.	USA, Oakland Oceanic	Compliant
902	WOOBY	B581	Category R/S airspace to Category R FIR TOC Point	30 NM	Auckland Oceanic		Oakland Oceanic also accepts UPRs crossing the Auckland Oceanic FIR Boundary with the 30 NM separation.	USA, Oakland Oceanic	Compliant
903	ELLSM	G457	Category R/S airspace to Category R FIR TOC Point	30 NM	Auckland Oceanic		Oakland Oceanic also accepts UPRs crossing the Auckland Oceanic FIR Boundary with the 30 NM separation.	USA, Oakland Oceanic	Compliant
904	PASSA	B577	Category R/S airspace to Category R FIR TOC Point	30 NM	Auckland Oceanic		Oakland Oceanic also accepts UPRs crossing the Auckland Oceanic FIR Boundary with the 30 NM separation.	USA, Oakland Oceanic	Compliant
905	RAMIZ	B596	Category R/S airspace to Category R FIR TOC Point	30 NM	Auckland Oceanic		Oakland Oceanic also accepts UPRs crossing the Auckland Oceanic FIR Boundary with the 30 NM separation.	USA, Oakland Oceanic	Compliant
906	TENOR	B595	Category R/S airspace to Category R FIR TOC Point	30 NM	Tahiti FIR		Oakland Oceanic also accepts UPRs crossing the Tahiti FIR Boundary with the 30 NM separation.	USA, Oakland Oceanic	Compliant
907	BISOX	B200	Category R/S airspace to Category R FIR TOC Point	30 NM	Tahiti FIR		Oakland Oceanic also accepts UPRs crossing the Tahiti FIR Boundary with the 30 NM separation.	USA, Oakland Oceanic	Compliant
908	UPNAR	B454	Category R/S airspace to Category R FIR TOC Point	30 NM	Tahiti FIR		Oakland Oceanic also accepts UPRs crossing the Tahiti FIR Boundary with the 30 NM separation.	USA, Oakland Oceanic	Compliant
909	MAEVA	A220	Category R/S airspace to Category R FIR TOC Point	30 NM	Tahiti FIR		Oakland Oceanic also accepts UPRs crossing the Tahiti FIR Boundary with the 30 NM separation.	USA, Oakland Oceanic	Compliant
910	WIBIG	G575	Category R/S airspace to Category R FIR TOC Point	30 NM	Tahiti FIR		Oakland Oceanic also accepts UPRs crossing the Tahiti FIR Boundary with the 30 NM separation.	USA, Oakland Oceanic	Compliant
911	Random crossing Points	UPRs	Category R/S airspace to Category R FIR TOC Point	30 NM	Mazatlan FIR		There are no routes that cross the Oakland/Mazatlan FIR boundary. Oakland Oceanic accepts UPRs crossing the FIR Boundary with the 30 NM separation.	USA, Oakland Oceanic	Compliant
912	FICKY	1,B577,B200,E	Category R/S airspace to Category R FIR TOC Point	23 NM Lateral and 30 NM Longitudinal	Los Angeles FIR			USA, Oakland Oceanic	Compliant
913	ELKEY	R577	Category R/S airspace to Category R FIR TOC Point	23 NM Lateral and 30 NM Longitudinal	Los Angeles FIR			USA, Oakland Oceanic	Compliant
914	DINTY	R576	Category R/S airspace to Category R FIR TOC Point	23 NM Lateral and 30 NM Longitudinal	Los Angeles FIR			USA, Oakland Oceanic	Compliant
915	AUDIA	R585	Category R/S airspace to Category R FIR TOC Point	23 NM Lateral and 30 NM Longitudinal	Los Angeles FIR			USA, Oakland Oceanic	Compliant

S/No.	TOC Points	ATS Routes	Category of Airspace to FIR TOC Point (Inbound only)	Minimum horizontal separation standard	Inbound Transferring FIR	Auto hand-off surveillance data-sharing overlapping coverage at the TOC point : Yes or No	Remarks/Route Restrictions	Accepting State, FIR	Seamless ANS Plan compliance?
916	MAFIC	A220	Category R/S airspace to Category R FIR TOC Point	23 NM Lateral and 30 NM Longitudinal	Oakland Domestic FIR			USA, Oakland Oceanic	Compliant
917	CREAN	R465	Category R/S airspace to Category R FIR TOC Point	23 NM Lateral and 30 NM Longitudinal	Oakland Domestic FIR			USA, Oakland Oceanic	Compliant
918	BAART	R464	Category R/S airspace to Category R FIR TOC Point	23 NM Lateral and 30 NM Longitudinal	Oakland Domestic FIR			USA, Oakland Oceanic	Compliant
919	ALLBE	R463	Category R/S airspace to Category R FIR TOC Point	23 NM Lateral and 30 NM Longitudinal	Oakland Domestic FIR			USA, Oakland Oceanic	Compliant
920	Random crossing Points	UPRs	Category R/S airspace to Category R FIR TOC Point	23 NM Lateral and 30 NM Longitudinal	Oakland Domestic FIR		There are many waypoints north of the CEP Routes where aircraft utilize UPRs and flexible tracks crossing the FIR. Oakland accepts the 30 NM minima for these UPRs and Flexible Tracks.	USA, Oakland Oceanic	Compliant
921	Random crossing Points	UPRs	Category R/S airspace to Category R FIR TOC Point	23 NM Lateral and 30 NM Longitudinal	Seattle FIR		There are many waypoints on the Seattle FIR boundary where aircraft utilize UPRs and flexible tracks crossing the FIR. Oakland accepts the 30 NM minima for these UPRs and Flexible Tracks.	USA, Oakland Oceanic	Compliant
922	HEMLO	A332	Category R/S airspace to Category R FIR TOC Point	23 NM Lateral and 30 NM Longitudinal	Seattle FIR			USA, Oakland Oceanic	Compliant
923	SEDAR	A331	Category R/S airspace to Category R FIR TOC Point	23 NM Lateral and 30 NM Longitudinal	Seattle FIR			USA, Oakland Oceanic	Compliant
924	KYLLE	B453	Category R/S airspace to Category R FIR TOC Point	23 NM Lateral and 30 NM Longitudinal	Seattle FIR			USA, Oakland Oceanic	Compliant
925	KURTT	B453	Category R/S airspace to Category R FIR TOC Point	30 NM	Vancouver FIR			USA, Oakland Oceanic	Compliant
926	Random crossing Points	UPRs	Category R/S airspace to Category R FIR TOC Point	30 NM	Vancouver FIR		There are many waypoints on the Vancouver FIR boundary where aircraft utilize UPRs and flexible tracks crossing the FIR. Oakland accepts the 30 NM minima for these UPRs and Flexible Tracks.	USA, Oakland Oceanic	Compliant
927	BOMPA	B202	Category S airspace to Category S FIR TOC Point	20NM	VIETIANE	Yes		Vietnam (Ho Chi Minh)	Incompliant
928	EXOTO	L642	Category S airspace to Category S FIR TOC Point	50NM	SANYA	Yes		Vietnam (Ho Chi Minh)	Incompliant
929	MIGUG	N892	Category S airspace to Category S FIR TOC Point	80NM	MANILA	No		Vietnam (Ho Chi Minh)	Incompliant
930	ARESI	L628	Category S airspace to Category S FIR TOC Point	80NM	MANILA	No		Vietnam (Ho Chi Minh)	Incompliant
931	PANDI	M765,N500	Category S airspace to Category S FIR TOC Point	80NM	MANILA	No		Vietnam (Ho Chi Minh)	Incompliant
932	AKMON	L625	Category S airspace to Category S FIR TOC Point	10 Mins MNT	SINGAPORE	No		Vietnam (Ho Chi Minh)	Incompliant
933	AKMON	M768	Category S airspace to Category S FIR TOC Point	50NM	SINGAPORE	No		Vietnam (Ho Chi Minh)	Incompliant
934	DUDIS	M771	Category S airspace to Category S FIR TOC Point	20NM	SINGAPORE	Yes		Vietnam (Ho Chi Minh)	Incompliant
935	IPRIX	M753	Category S airspace to Category S FIR TOC Point	20NM	SINGAPORE	Yes		Vietnam (Ho Chi Minh)	Incompliant
936	IGARI	M765	Category S airspace to Category S FIR TOC Point	20NM	SINGAPORE	Yes	Delegation of the responsibility for the provision of ATS by Kuala Lumpur ACC	Vietnam (Ho Chi Minh)	Incompliant
937	DADEM	M510	Category S airspace to Category S FIR TOC Point	20NM	PHNOMPENH	Yes		Vietnam (Ho Chi Minh)	Incompliant
938	MULAD	M505	Category S airspace to Category S FIR TOC Point	20NM	PHNOMPENH	Yes		Vietnam (Ho Chi Minh)	Incompliant
939	NUMDI	R334	Category S airspace to Category S FIR TOC Point	20NM	PHNOMPENH	Yes		Vietnam (Ho Chi Minh)	Incompliant
940	XONAN	N891	Category S airspace to Category S FIR TOC Point	20NM	PHNOMPENH	Yes		Vietnam (Ho Chi Minh)	Incompliant
941	OSOTA	M753	Category S airspace to Category S FIR TOC Point	20NM	PHNOMPENH	Yes		Vietnam (Ho Chi Minh)	Incompliant
942	KISAN	M755	Category S airspace to Category S FIR TOC Point	20NM	PHNOMPENH	Yes		Vietnam (Ho Chi Minh)	Incompliant
943	SAPEN	R468	Category S airspace to Category S FIR TOC Point	20NM	PHNOMPENH	Yes		Vietnam (Ho Chi Minh)	Incompliant
944	GONLY	R588	Category S airspace to Category S FIR TOC Point	20NM	PHNOMPENH	Yes		Vietnam (Ho Chi Minh)	Incompliant
945	ANINA	G474	Category S airspace to Category S FIR TOC Point	20NM	PHNOMPENH	Yes		Vietnam (Ho Chi Minh)	Incompliant
946	SADIN	Q1	Category S airspace to Category S FIR TOC Point	20NM	Ho Chi Minh	Yes	Delegation of the responsibility for the provision of ATS by HA NOI ACC	Vietnam (Ho Chi Minh)	Incompliant
947	VILOT	W1	Category S airspace to Category S FIR TOC Point	20NM	Ho Chi Minh	Yes	Delegation of the responsibility for the provision of ATS by HA NOI ACC	Vietnam (Ho Chi Minh)	Incompliant
948	CQ	W2	Category S airspace to Category S FIR TOC Point	20NM	Ho Chi Minh	Yes	Delegation of the responsibility for the provision of ATS by HA NOI ACC	Vietnam (Ho Chi Minh)	Incompliant
949	ASUKU	G221	Category S airspace to Category S FIR TOC Point	20NM	Ho Chi Minh	Yes	Delegation of the responsibility for the provision of ATS by HA NOI ACC	Vietnam (Ho Chi Minh)	Incompliant