



AMC & ATFMU

- AIRSPACE MANAGEMENT CELL (THAILAND)
- BANGKOK AIR TRAFFIC FLOW MANAGEMENT

Presented By
**Mr. Dudsadee &
Chanikarn (FERN)**

Airspace should not be designated as purely civil or military, but rather be considered as a continuum in which all user requirements should be accommodated to the greatest possible extent.



Thailand's Airspace Management Structure



AMC THAILAND

AIRSPACE MANAGEMENT CELL THAILAND



CAAT
สำนักงานการเดินอากาศไทย
The Civil Aviation Authority of Thailand

Started operation in **September 2019**
Located in ATM NMC Operation Room,
AEROTHAI headquarter

AMC THAILAND
AEROTHAI HEADQUARTER



CAAT-AIM Officer /
UASCAAT-AIM Officer

AMC officer

AMC Planner

MILO

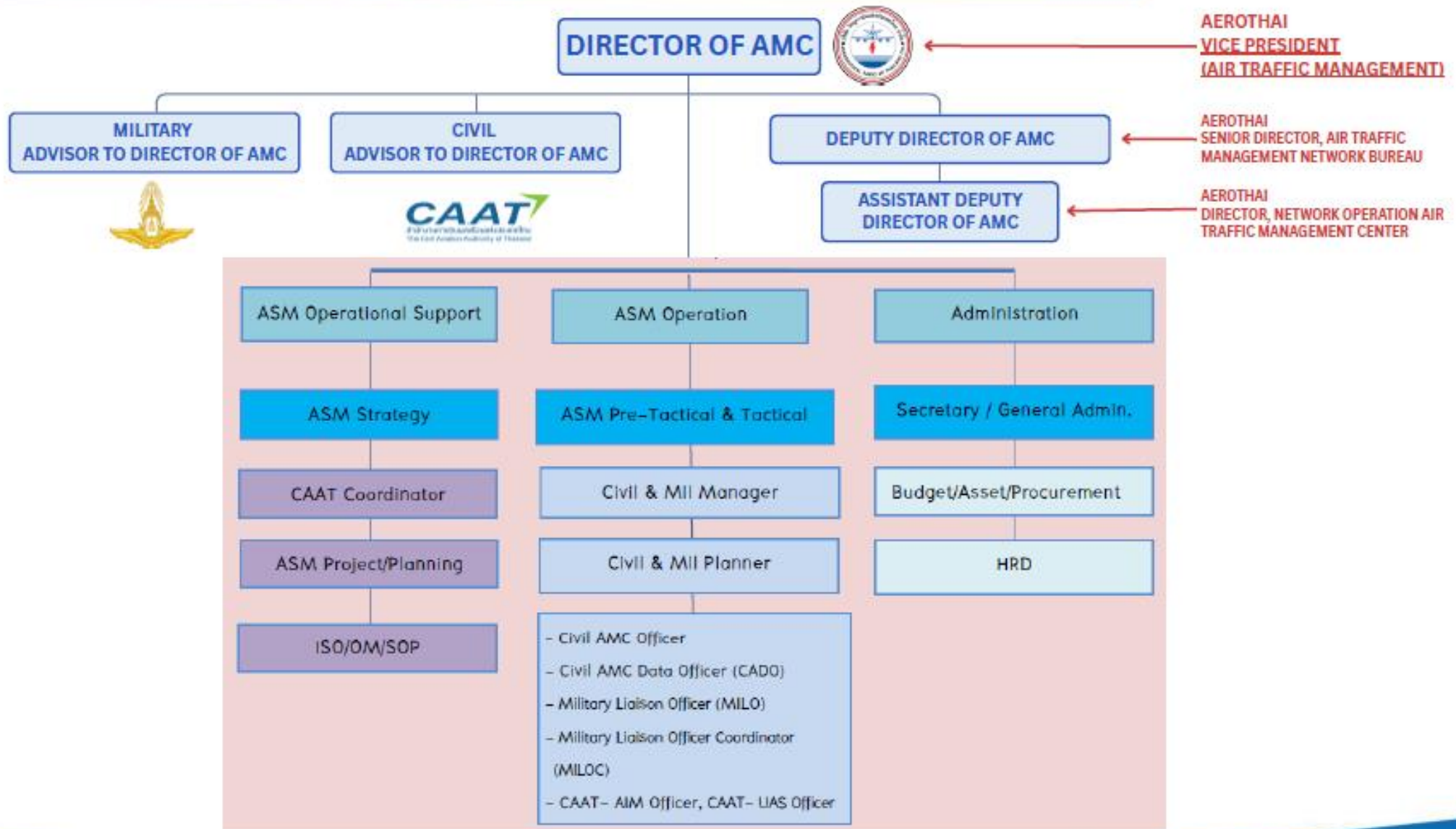
Mil. Planner

CADO

Mil. Manager

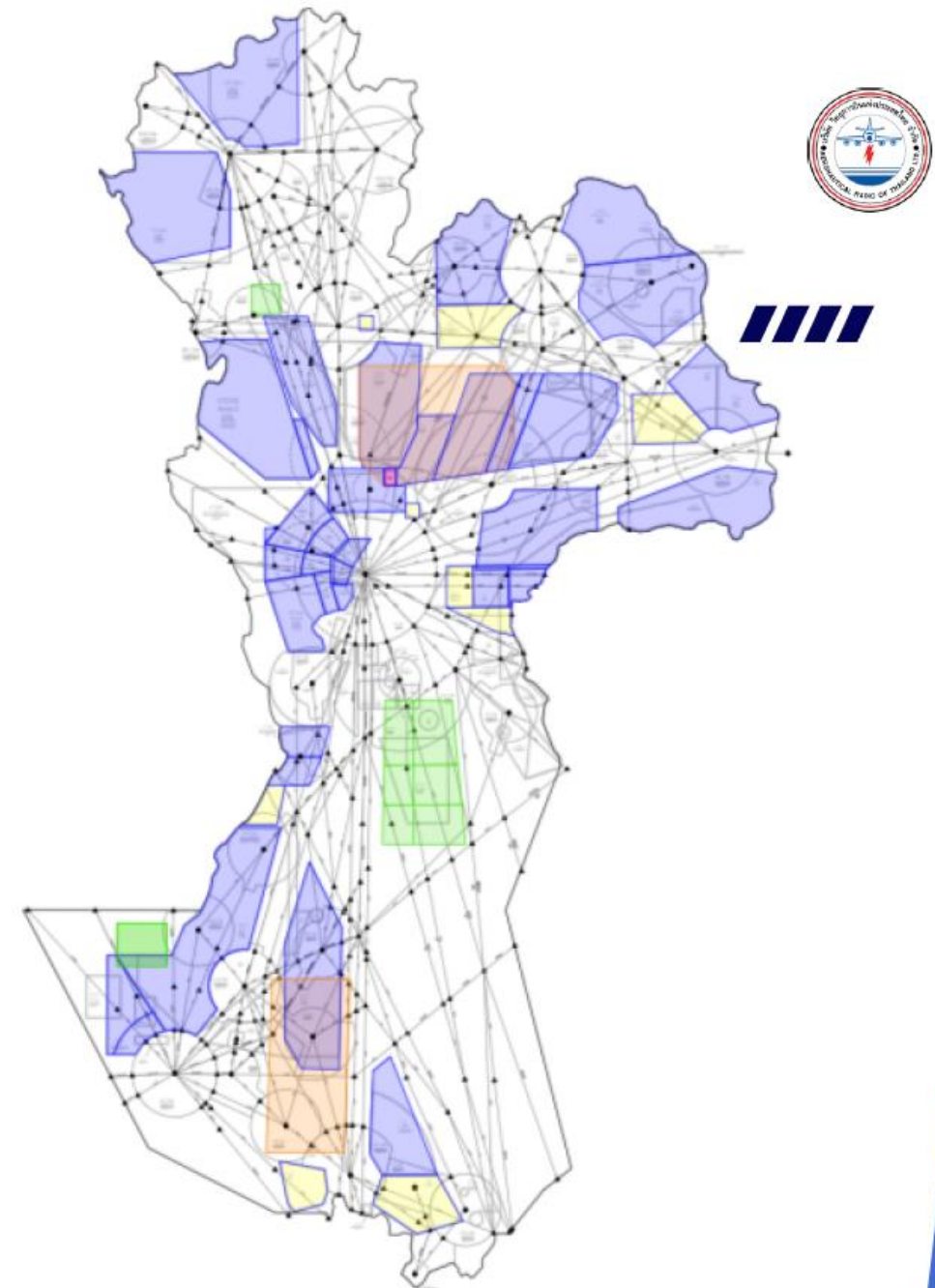
AMC Manager

AMC THAILAND STRUCTURE



SPECIAL USE AIRSPACE IN THAILAND

- D** DANGER AREA
- P** PROHIBITED AREA
- R** RESTRICTED AREA
- TRA** TEMPORARY RESERVED AREA





AIRSPACE USERS

MAJOR EVENTS/PUBLIC ACTIVITIES

MILITARY ACTIVITY



DRONE



LANTERN, FIREWORK



ROCKET FESTIVAL



AIRSPACE RESERVATION TOOL



Airspace Use Plan / Updated Airspace Use Plan

Date: 16-12-2025 From: 15-12-2025 17:00 UTC to: 16-12-2025 16:59 UTC | Last Update: 02-01-2026 05:30 UTC

ANNOUNCEMENT

ATTN ALL CONCERNED UNIT, NEW FPL PROCEDURE FOR TRAFFIC IN THE NORTHERN PART OF BKK FIR.

ALPHA (76)

List of available CDRs category 2 and ME areas availability

Route #	Route segment #	Validity period (UTC)		level available		Remark #	Last Update #
		From #	To #	From #	To #		
B346 (CDR)	BKK-PCB	1700	0059	ALT11000	FL460	Auto-Generate	01-12-2025 03:46 UTC
B346 (CDR)	BKK-PCB	0901	1659	ALT11000	FL460	Auto-Generate	01-12-2025 03:46 UTC
W39 (CDR)	NOER-PCB	1700	0059	ALT7000	FL460	Auto-Generate	01-12-2025 03:46 UTC
W39 (CDR)	NOER-PCB	0901	1659	ALT7000	FL460	Auto-Generate	01-12-2025 03:46 UTC
A1	TOPEP-PASAI	2301	1659	ALT8000	FL460	Auto-Generate	11-12-2025 03:38 UTC
Y13	PWIRI-GRASO	2301	1659	FL210	FL460	Auto-Generate	11-12-2025 03:42 UTC
Y15	SAWOF-GRASO	2301	1659	FL210	FL460	Auto-Generate	11-12-2025 03:45 UTC

The **THAI-CMAC System** is used to notify the reservation or make reservation for airspace usage by airspace users, to manage airspace use in advance, and to monitor airspace usage.

AUP : Airspace Use Plan

Announces which CDRs are available for the next operational day.

UUP : Updated Airspace Use Plan

Updates or changes during the day.



Website

<https://thalcmac.aerothal.aero/#/home>

THAI-CMAC SYSTEM



AREA NAME

PLANNED ACTIVITY

CONFIRMED ACTIVITY

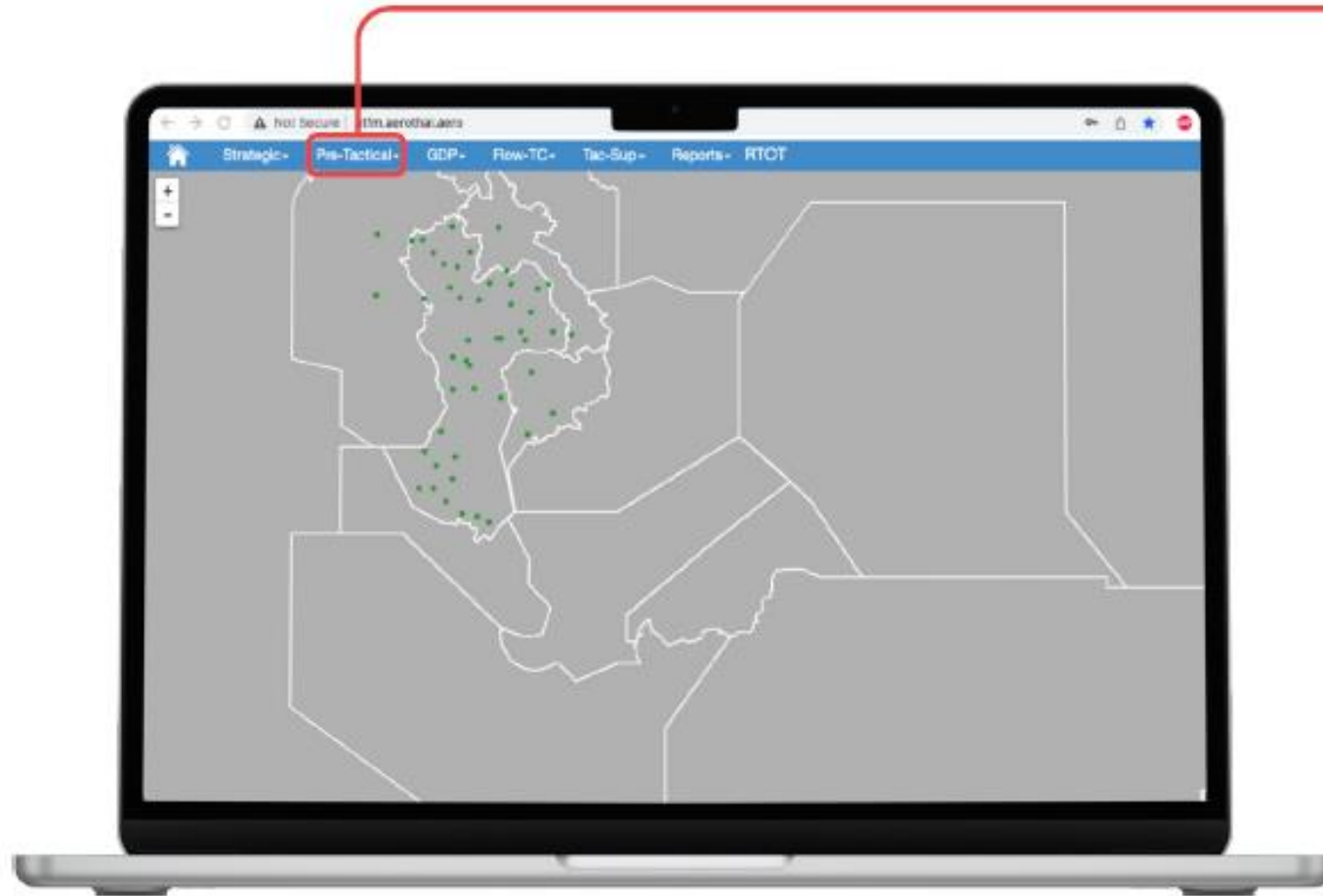
ACTUAL TIME USED

CANCELED ACTIVITY



Website
<https://thalcmac.aerothal.aero/#/home>





PRE TACTICAL

Airspace Demand Monitoring

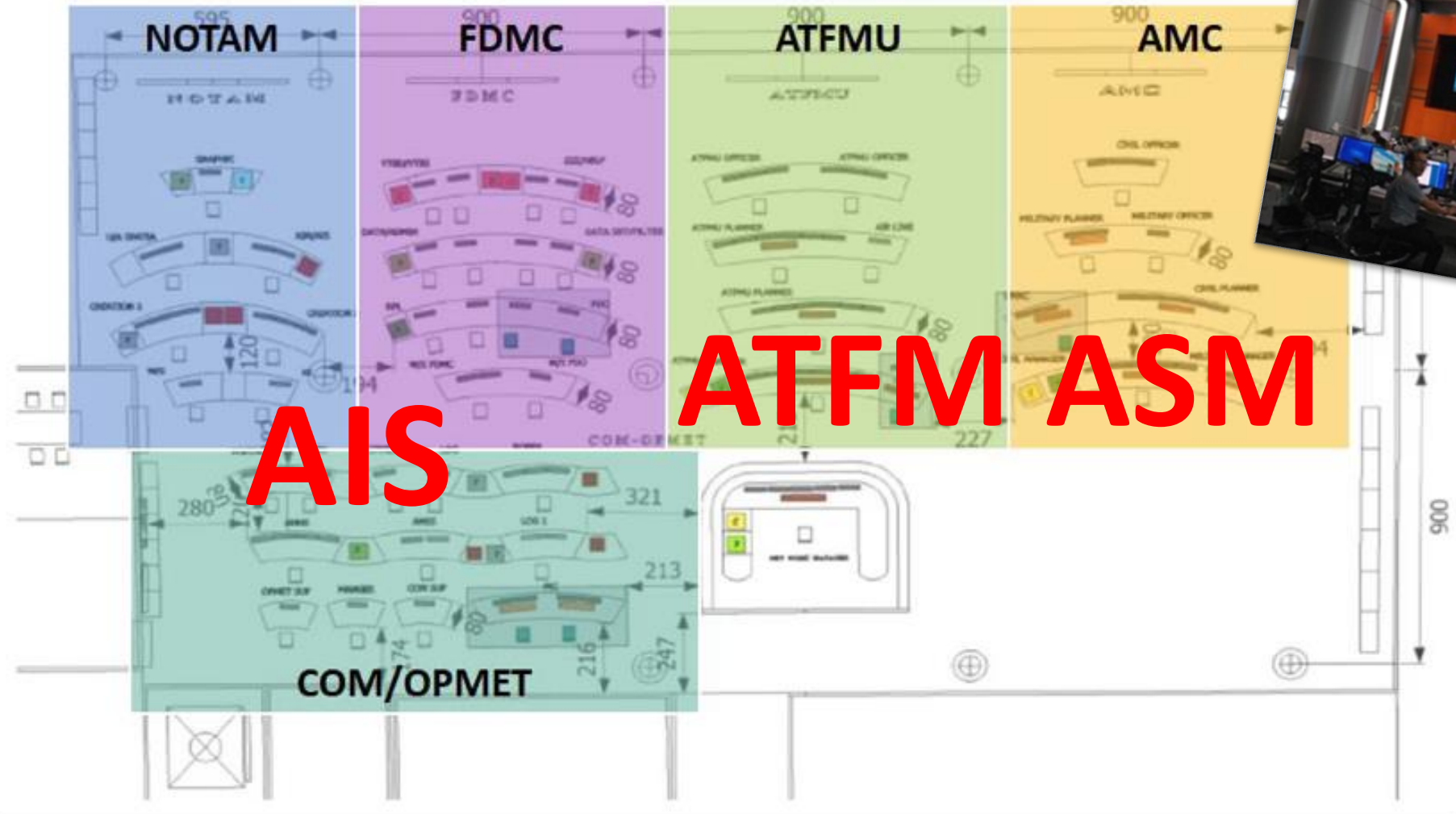


DAILY MEETING BETWEEN AMC AND ATFMU



Website
<https://atfm.aerotal.aero/>

ATM Network Management Center



AIS ATFM ASM



Bangkok Air Traffic Flow Management (ATFM) Unit



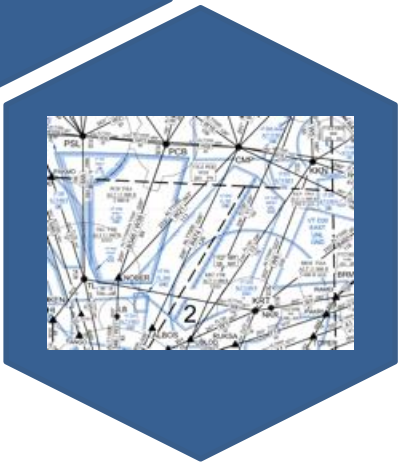
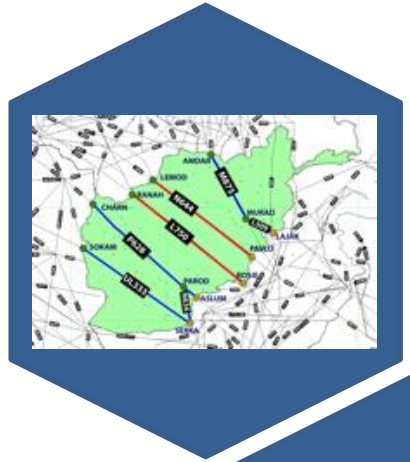
Air Traffic Flow Management (ATFM) = Demand-Capacity Balancing Service



Scope of AEROTHAI ATFM Services

BOBCAT ATFM Service

ATFM service for flights overflying **Kabul FIR** between **2000-2359 UTC**, covering *tactical ATFM* operation phase

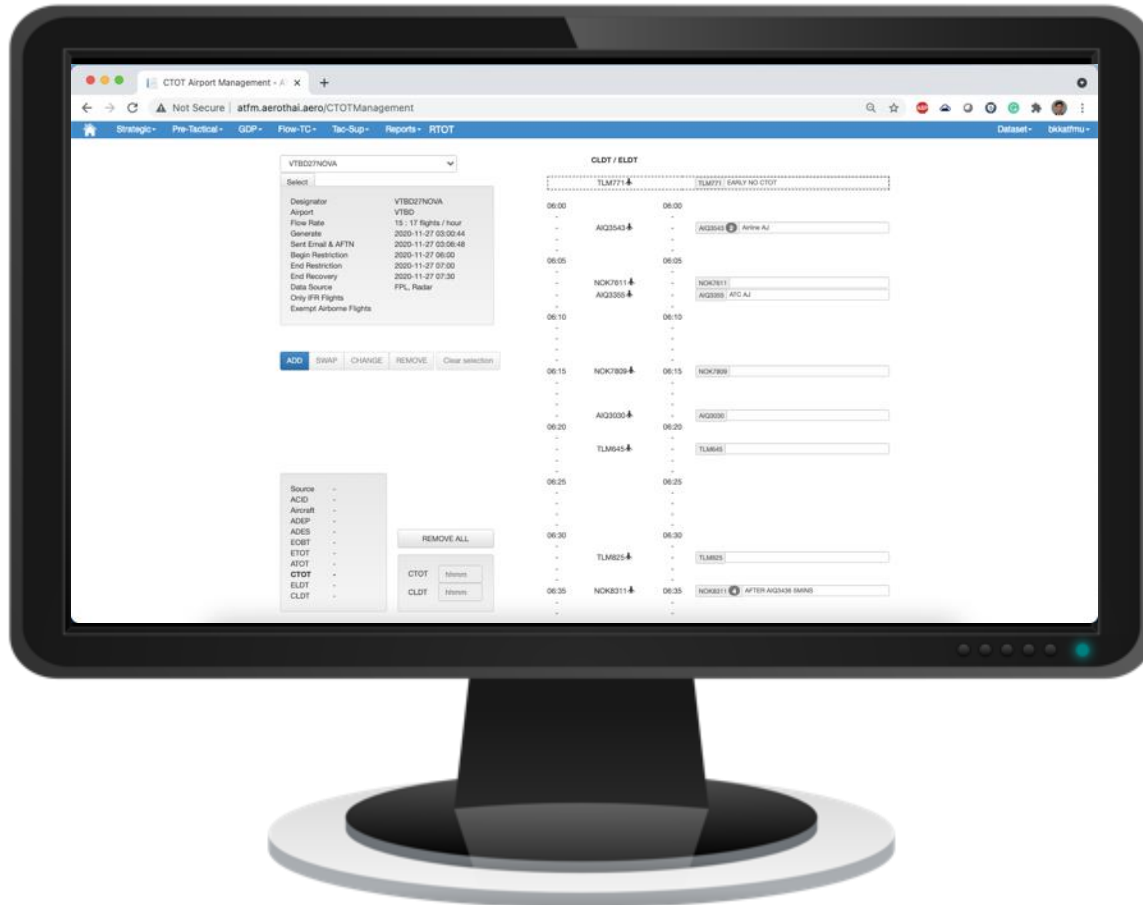


General ATFM Service

ATFM service to enable demand-capacity balancing within **Bangkok FIR**, covering *strategic, pre-tactical, tactical* ATFM operation phases and can be activated **H24***

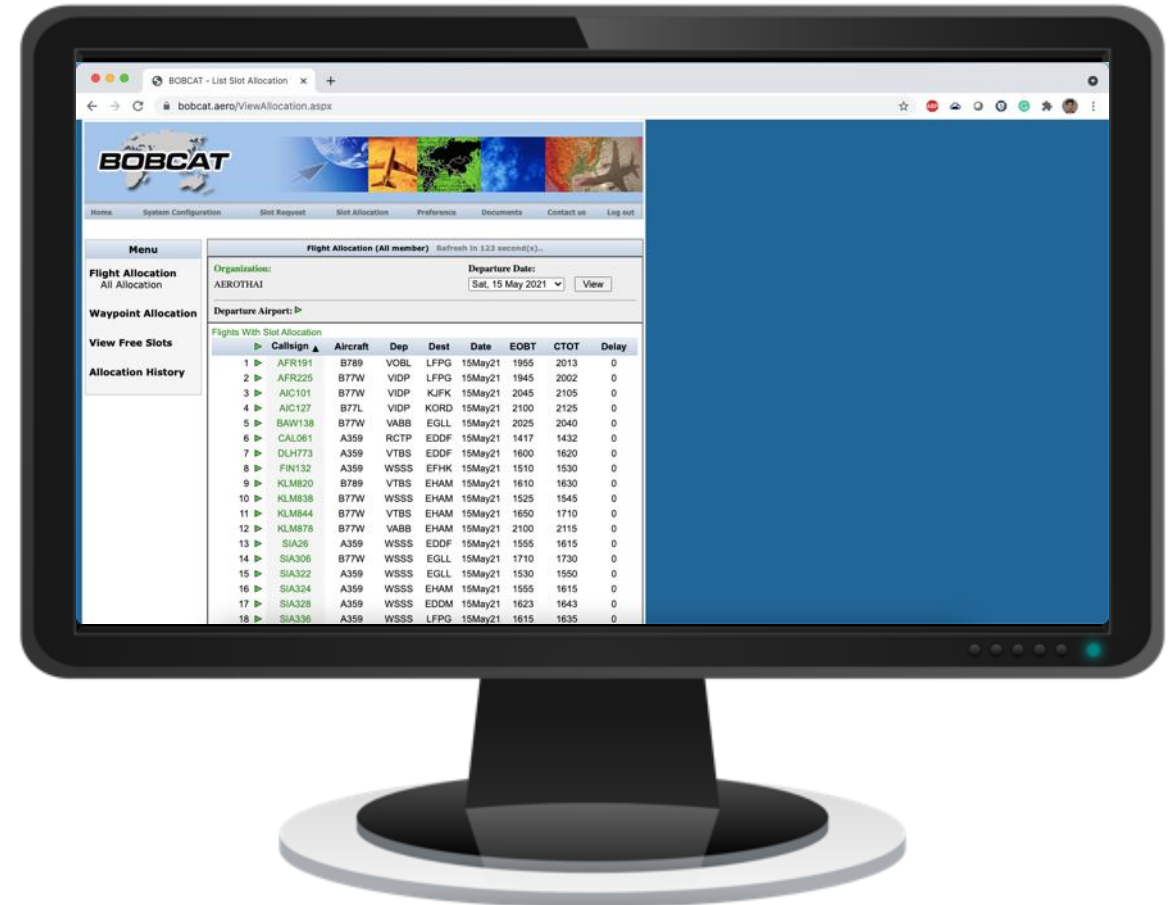
ATFAS

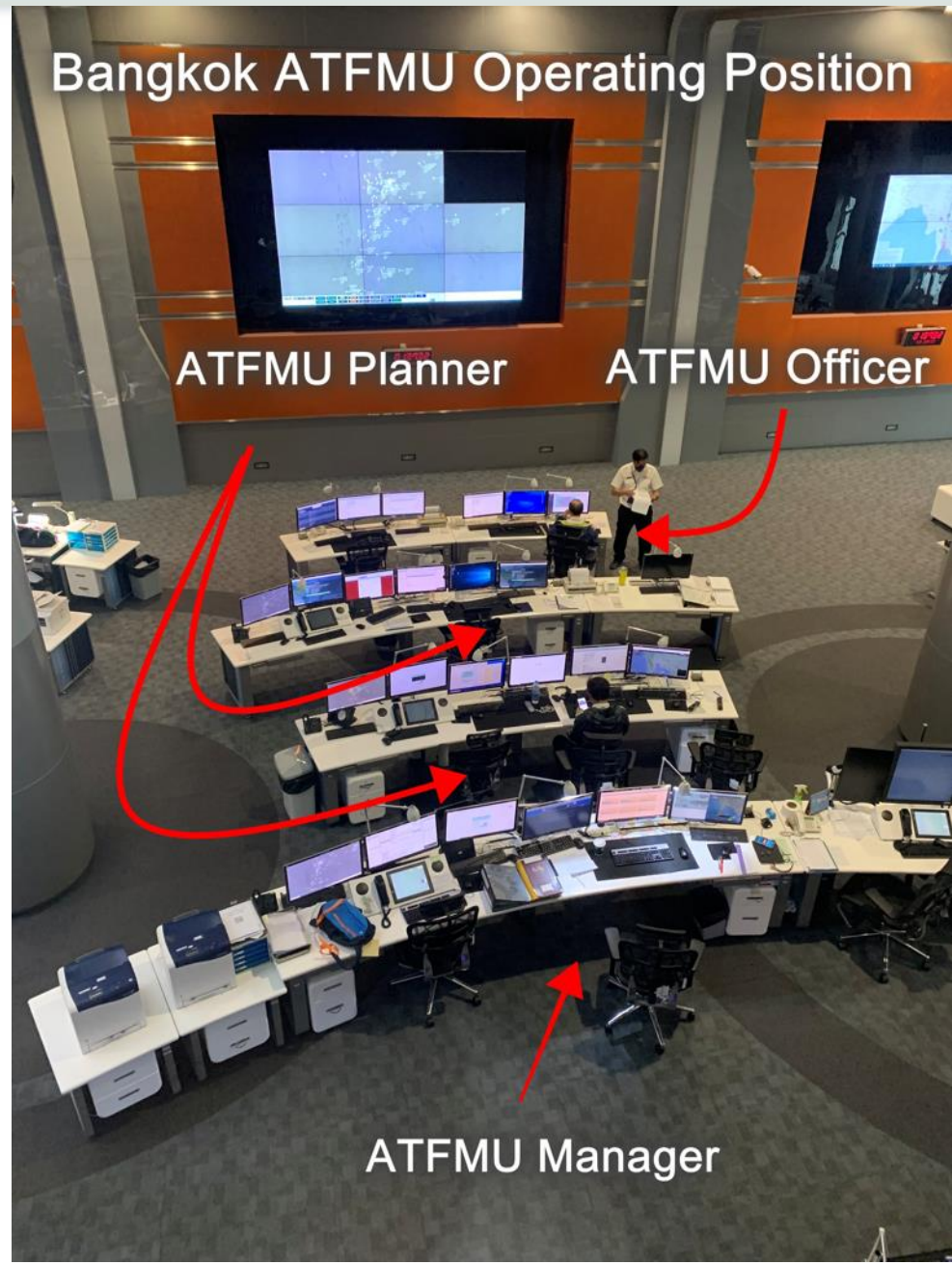
<https://atfm.aerOTHAI.aero>



BOBCAT

<https://www.bobcat.aero>







Thank You

For Your Attention

AMC Planner

MILO

Mil. Planner

CADO

AMC Manager

Mil. P