



AEROTHAI Aeronautical Radio of Thailand

บริษัท วิทยุการบินแห่งประเทศไทย จำกัด

UPDATE ON TAILORED MET INFORMATION TO SUPPORT ATM OPERATIONS IN THAILAND

MET/R WG/15
IP/10



1.1 The Thai Meteorology Department (TMD) is a Civil Aviation Authority of Thailand (CAAT) certified Meteorology Services Provider in Thailand, providing observations, forecasts, charts, and other related aviation meteorology products for aircraft operators and air navigation service provider in Thailand. Meteorological products included the standard meteorological products in accordance with the ICAO Annex 3 (e.g. MET Report, METAR/SPECI, TAF, SIGMET, etc.) from most of the civil aerodromes in Thailand.

1.2 The increasing of the air traffic demand at major aerodromes in Thailand has pushed these aerodromes and surrounding airspace sectors to utilize at their full capacity, while weather is the main factor that affects capacity. The operations under adverse weather situations resulted in airborne delays, unpredictable operations, and heavy ATC workload. The use of Air Traffic Flow Management (ATFM) measures based on standard meteorological products is unable to manage demand and capacity effectively.

1.3 CAAT had published a Guidance Material for Meteorological information and services to support ATM operation. The purposes of this document are:

- (1) provide a framework for MET Service providers to establish MET information and services to support the ATM operations,
- (2) To support the ATM operations in Thailand with MET information and services, particularly short and long-term plan for its air traffic management scheme.
- (3) To encourage MET service providers to learn more about MET information and services for

1.4 ATM Operations from the examples set by other countries, within this guidance. The TMD and Aeronautical Radio of Thailand Co., Ltd. (AEROTHAI), an Air Navigation Service Provider in Thailand, are collaborating to develop the procedure and service to promote the Tailored Meteorological Information to support Air Traffic Management (ATM) operations in Thailand, supported by the CAAT. The collaboration utilizes the current available tools and equipment to provide specific weather information for the ATM to deal with the severe weather effectively.

Weather briefing by TMD in the daily ATFM web conference

- 2.1 The Daily ATFM web conference is hosted by Bangkok Air Traffic Flow Management Unit (Bangkok ATFMU) at 0930 local time, with all air traffic services units in AEROTHAI. The conference topics are weather, traffic demand/capacity situation, activities that may affect Air Traffic Management operations, planned ATFM measures, NOTAM, ATFM daily plan, and other related information.
- 2.2 Multiple collaborations between TMD and AEROTHAI through online and onsite meetings were established to create a list of required meteorological information. This data was used by TMD to prepare the briefing package for AEROTHAI. Starting from 16 August 2024, TMD participated in the Daily ATFM web conference for a daily weather outlook briefing. The briefing utilized available products at that time, and the package was prepared using a PowerPoint presentation. The package includes a Significant Weather Chart, a nationwide general weather forecast, hourly decoded TAFs for major aerodromes, and graphical SIGMETs.

2.3 On 30 September 2025, TMD introduced an updated version of the briefing package, which is now accessible on the web portal. The content will automatically update to the latest version and adjust to meet ATM requirements. This briefing package is a live document and will be updated whenever a new product becomes available and ready to use.

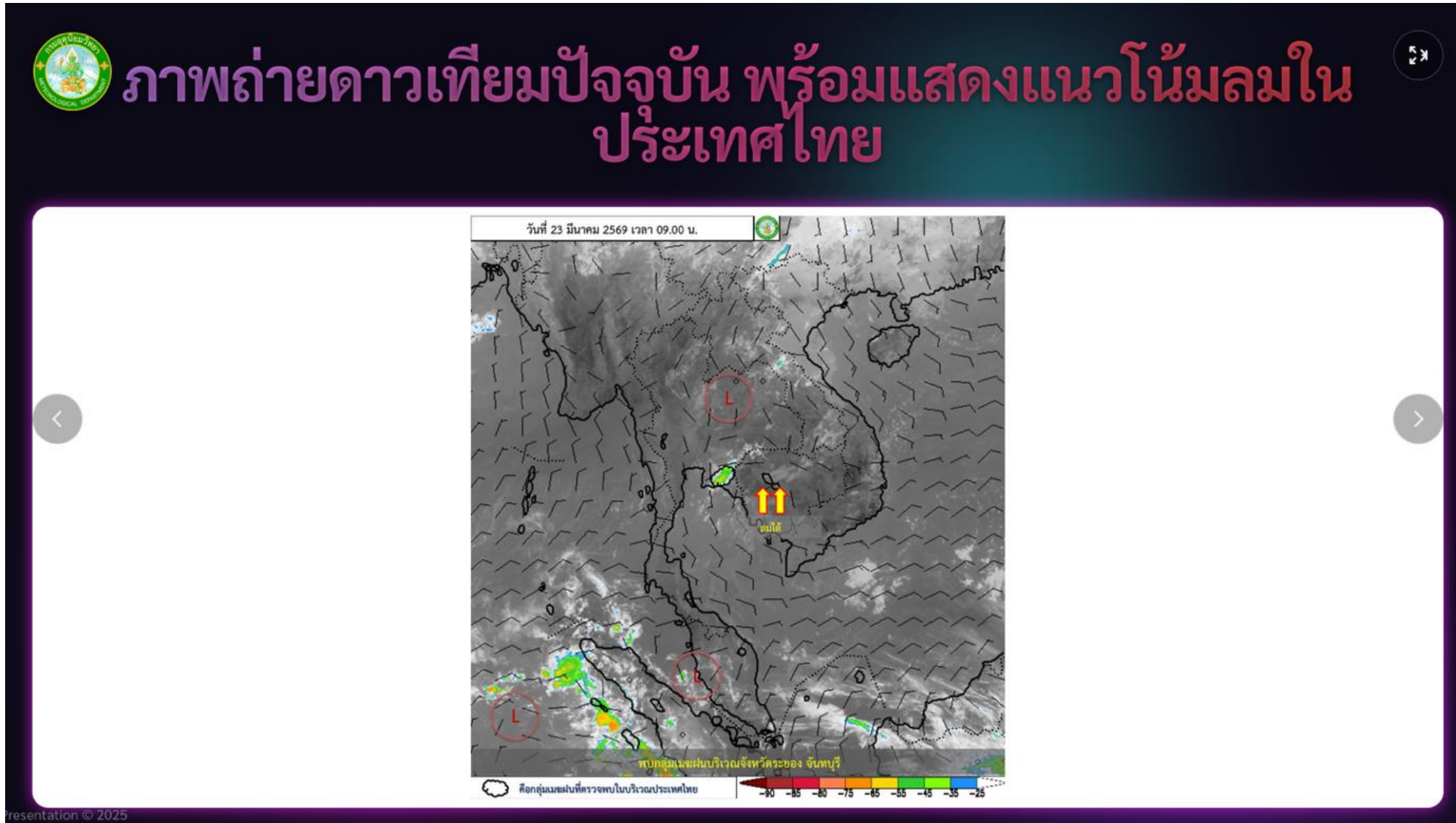
The information displayed in the briefing package includes



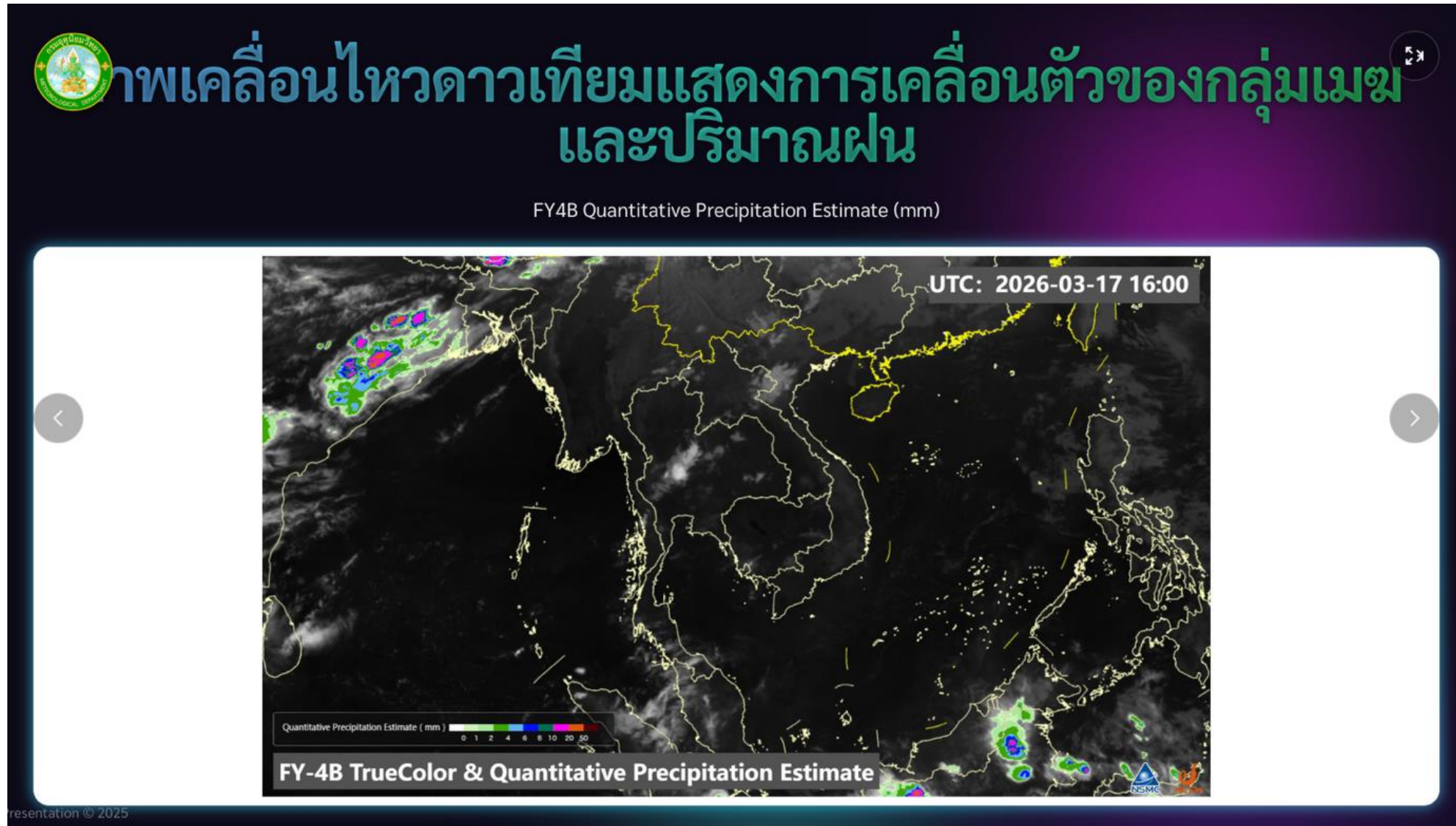
a) Cover page.



b) Latest satellite image with forecast wind.




c) Satellite animation and quantitative precipitation estimate.





d) Significant weather charts.



แผนที่อากาศการบินสำหรับประเทศไทย

แสดงข้อมูลพยากรณ์อากาศล่วงหน้าตามช่วงเวลาต่างๆ

PGZE98 | 17 - 18:00Z


PGZE98 | 17 - 12:00Z

PGZE98 | 17 - 06:00Z

PGZE98 | 17 - 00:00Z

PGZC97 | 17 - 18:00Z

PGZC97 | 17 - 12:00Z



Area A			
Level	Wind	Temp	
0000 FT	03000	01	
0000 FT	03000	01	
0000 FT	03000	01	
0000 FT	03000	01	
0000 FT	03000	01	

Area B			
Level	Wind	Temp	
0000 FT	03000	01	
0000 FT	03000	01	
0000 FT	03000	01	
0000 FT	03000	01	
0000 FT	03000	01	

Area C			
Level	Wind	Temp	
0000 FT	03000	01	
0000 FT	03000	01	
0000 FT	03000	01	
0000 FT	03000	01	
0000 FT	03000	01	

Area D			
Level	Wind	Temp	
0000 FT	03000	01	
0000 FT	03000	01	
0000 FT	03000	01	
0000 FT	03000	01	
0000 FT	03000	01	

Area E			
Level	Wind	Temp	
0000 FT	03000	01	
0000 FT	03000	01	
0000 FT	03000	01	
0000 FT	03000	01	
0000 FT	03000	01	

Issued By: THAI AERONAUTICAL MET.
 SIGWX SFC - 10,000 FT
 Fixed Time Prognostic Chart
 Valid 06 UTC on 18 Mar 2026

Notes and Symbol:
 1. Pressure in hPa, speed in knots, Temperature in degree Celsius.
 2. Visibility in m included if less than 5000m
 3. Height in feet/feet above ground
 XXX = above 10,000 ft
 4. TS and CB imply MOD/SEV icing and turbulence
 5. Only significant weather and/or weather phenomenon causing visibility reduction below 6000 m included
 6. Figures inside the surface wind symbol = KT

e) Decoded TAF for major aerodromes (e.g. VTBS / Suvarnabhumi, VTBD / Don Mueang, VTSP / Phuket, VTCC / Chiang Mai, VTUK / Khon Kaen)

TAF for VTBS
ข้อมูลพยากรณ์อากาศสำหรับสนามบินสุวรรณภูมิ

Decoded TAF for VTBS

TAF VTBS 180500Z 1806/1912 20008KT 9999 FEW020BECMG 1820/1822 13005KTBECMG 1902/1903 20008KTTEMPO 1906/1910 VRB10G25KT 4000 TSRA FEW018CB SCT030 BKN100=

Hourly Forecast Issued: 18 Mar 05:00 UTC | Valid: 18/06:00 - 19/12:00 UTC Local-Time(GMT+7) UTC

Time (UTC)	SDAY 00:00	WEDNESDAY 22:00	WEDNESDAY 23:00	THURSDAY 00:00	THURSDAY 01:00	THURSDAY 02:00	THURSDAY 03:00	THURSDAY 04:00	THURSDAY 05:00	THURSDAY 06:00	THURSDAY 07:00	THURSDAY 08:00	THURSDAY 09:00	THURSDAY 10:00	THURSDAY 11:00
Code	VFR	VFR	VFR	VFR	VFR	VFR	VFR	VFR	VFR	IFR	IFR	IFR	IFR	VFR	VFR
Weather	-	-	-	-	-	-	-	-	-	TSRA	TSRA	TSRA	TSRA	-	-
Visibility km	>10 km	>10 km	>10 km	>10 km	>10 km	>10 km	>10 km	>10 km	>10 km	4.0 km	4.0 km	4.0 km	4.0 km	>10 km	>10 km
Ceiling	N 0 ft	FEW 2000 ft	FEW 2000 ft	FEW 2000 ft	FEW 2000 ft	FEW 2000 ft	FEW 2000 ft	FEW 2000 ft	FEW 2000 ft	FEW 1800 ft CB / SCT	FEW 1800 ft CB / SCT	FEW 1800 ft CB / SCT	FEW 1800 ft CB / SCT	FEW 2000 ft	FEW 2000 ft

resentation © 2025



f) SIGMET information with weather radar.

SIGMET Information
ข้อมูลสภาพอากาศที่เป็นนัยสำคัญต่อความปลอดภัยในการบิน

กรมอุตุนิยมวิทยา
Thai Meteorological Department

VTBB SIGMET Alerts

03:47:12 UTC

EMBD - TS

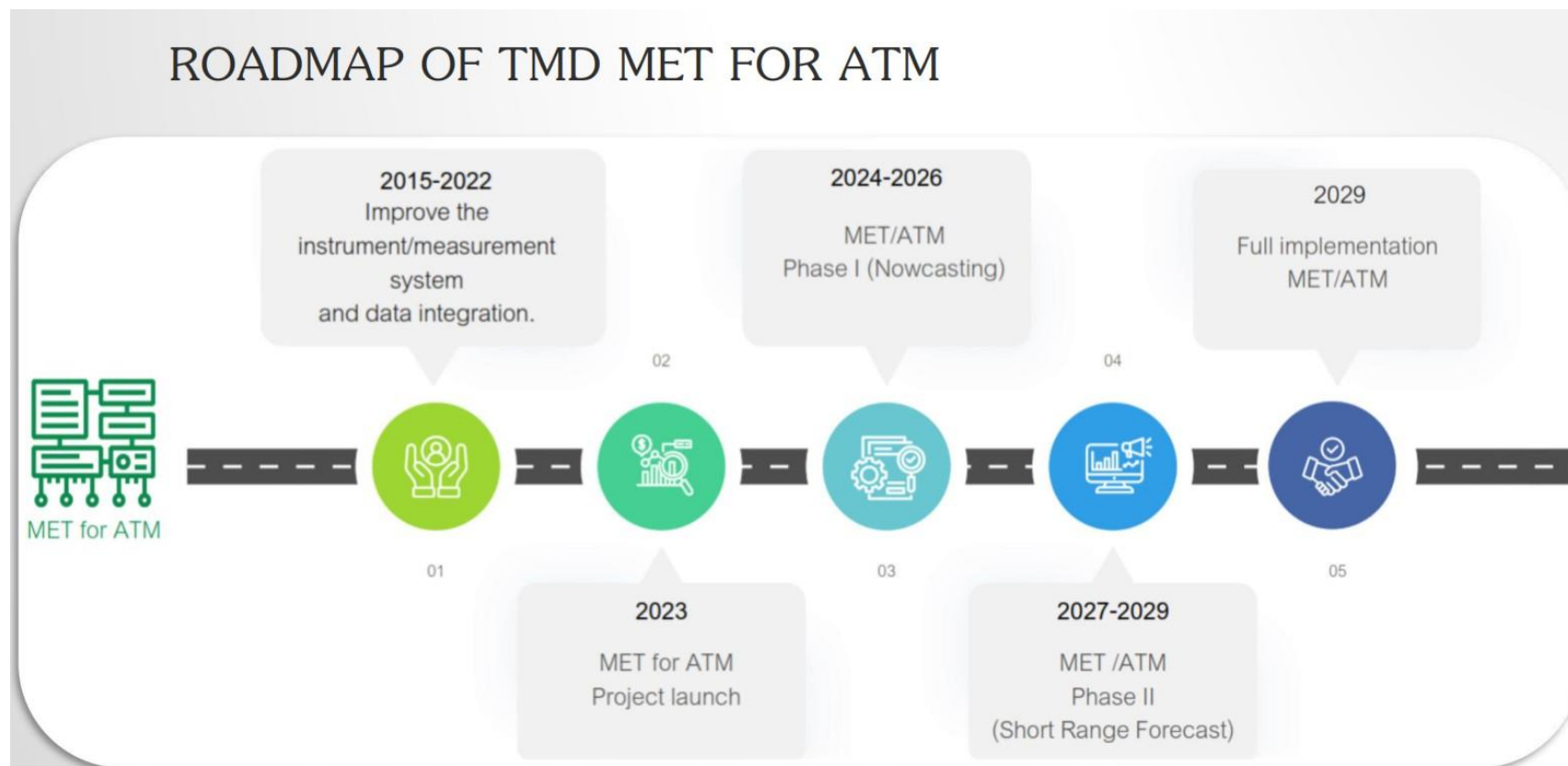
VTBB-4S

Begins: 2026-02-17T00:48:00Z
Ends: 2026-02-17T04:48:00Z
Top: 51,000 ft
Movement: NW at 15 kt
Change: NC

Leaflet | OpenStreetMap contributors | CARTO

presentation © 2025

2.4 TMD developed a roadmap for Meteorological information and services to support ATM operations since 2015. It began with Step 1 (2015 – 2022), focusing on preparing the instrument/measurement system and data integration. Step 2 (2023) marked the official launch of the MET for ATM project. Step 3, the current phase (2024 – 2026) is MET for ATM phase 1, which aims to deliver the Nowcasting product. Phase 2 (2027 – 2029) targets a Short-Range Forecast, with full project implementation scheduled for 2029.





Q and A

Sierra Hotel