



ICAO

International Civil Aviation Organization

Eleventh Meeting of the ICAO Asia/Pacific Search and Rescue
Workgroup (APSAR/WG/11)

Bangkok, Thailand, 5 – 8 May 2026

Agenda Item 4: Asia/Pacific and Inter-regional SAR Planning, Coordination and Cooperation

REGIONAL AIR NAVIGATION PLAN UPDATE

(Presented by the Secretariat)

SUMMARY

This paper presents an update on the electronic Air Navigation Plan (eANP) for Asia/Pacific (APAC) Region, which replaces *Asia and Pacific Regions Regional Air Navigation Plan* (ICAO Doc 9673). States/Administrations are invited to review the data affecting their administration and provide feedback to ICAO on the data's accuracy.

1. INTRODUCTION

1.1 State letters ref.: T 11/2.1 – AP034/16 and T 11/2.1 – AP051/16, adopted a common, new Air Navigation Plan (ANP) template, which was approved by the ICAO Council for use by all ICAO Regions. The ANP Volumes I, II and III are available on the ICAO APAC Office website at: <https://www.icao.int/APAC/apac-air-navigation-plan-anp>.

1.2 **DISCLAIMER:** The presentation of material in this report does not imply the expression of any opinion whatsoever on the part of ICAO, APANPIRG or ATM Sub-Group of APANPIRG or APSAR/WG concerning the legal status of any country, territory, city or area of its authorities, or concerning the delimitation of its frontiers or boundaries.

2. DISCUSSION

Background

2.1 The development of the new APAC ANP, replacing ICAO Doc 9673, has been discussed since 2017. Proposals for Amendment (PfAs) for Flight Information Regions (FIRs) and Search and Rescue Regions (SRRs) data in ANP Volume I require approval of the Council of ICAO. States should note that ICAO Doc 9673 did not provide a legal description of the FIRs in the first place, therefore, it is very important for States to understand that this process of checking, alignment and validation is crucial if they would like a formal basis for their FIRs. Furthermore, the PfA for SRR would enable the establishment of SRRs under the provisions of ICAO Annex 12.

2.2 To facilitate the PfA process, ICAO urged States to urgently review the FIR/SRR data of those FIRs and SRRs related to their Administration that were not included in the APAC ANP Volume I Table ATM I-1; and Table SAR I-1, and provide feedback to the ICAO APAC Office on the data's accuracy.

2.3 As FIRs were considerably more difficult to establish than SRRs, with issues such as air navigation charges and the establishment of special use airspace being factors for States, the review of FIRs was being conducted first. In addition, many SRRs were of similar dimensions as their associated FIRs, so this would be an easier task if the FIR dimensions were already established.

2.4 Four State letters have been issued on this matter and the response to the State letters are shown in **Appendix A**. In the event of anomalies, States were urged to confirm the correctness of the data. The intention was to clarify any anomalies, so they could be then compared to the ICAO data (**Appendix B** – FIRs and **Appendix C** – SRRs).

2.5 In order to complete the establishment of FIR/SRR tables, the information presented in the CHART ATS 1 and CHART SAR 1 from ICAO Doc 9673 as agreed by the ICAO Council, could be used as the baseline to populate APAC ANP Volume I. Subsequently, after the FIR and/or SRR tables have been incorporated with the published coordinates in the APAC ANP Volume I, States would need to file a PfA for any changes to the information in the ANP.

2.6 The exercise to review the APAC ANP with FIR and SSR coordinates should be based on ICAO historical records and not new proposals for changes. Some States had submitted major amendments to their FIRs and/or SRRs during the review process. These will only be considered if it was a change that only affected the national airspace and not the neighbouring airspace, or if all parties agreed with the change proposal before submission to ICAO.

Proposals for Amendment (PfA) Process

2.7 The PfA process for FIRs and SRRs followed the approval procedures stipulated in ANP Volume I (approval of the ICAO Council). The flow diagram detailing the verifications steps before entry into the ANP can be found in **Appendix D**. A PfA template is provided on the ICAO APAC Office website (<https://www.icao.int/APAC/apac-air-navigation-plan-anp>).

2.8 States should note that PfAs for either the APAC ANP or the *Regional Supplementary Procedures* (ICAO Doc 7030) should include a list of all the States of Registry of any airspace or airport or facility user that may be affected by the items that were proposed for amendment.

2.9 **Figure 1** and **Figure 2** shows the status of FIR and SRR verification respectively.

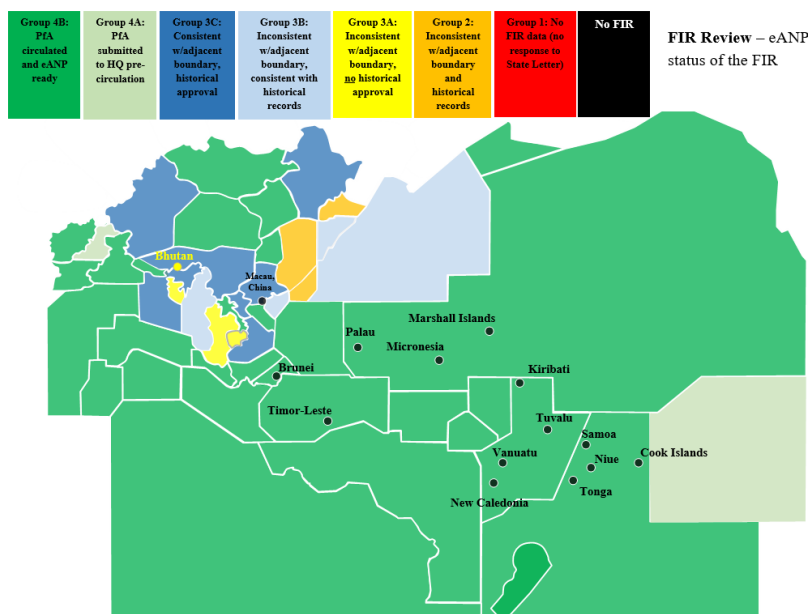


Figure 1: FIR Review Status, as of March 2025

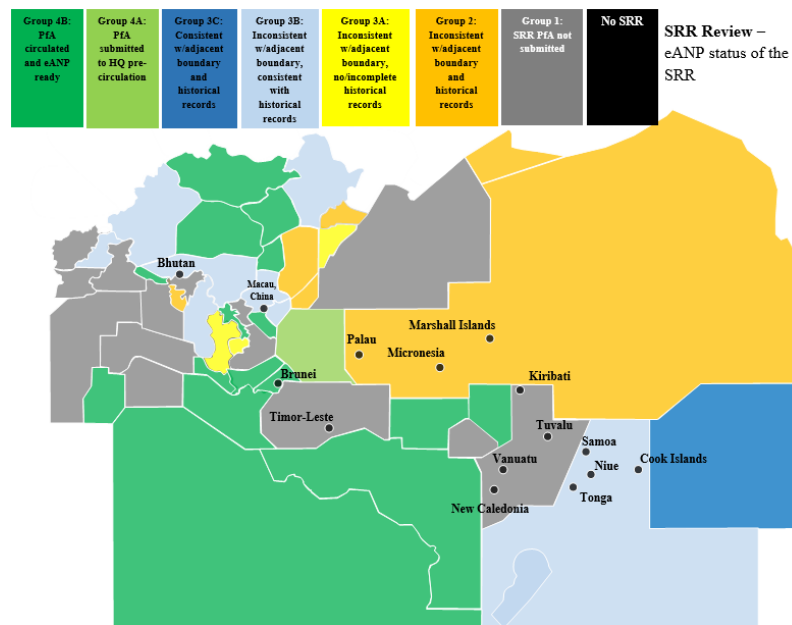


Figure 2: SRR Review Status, as of March 2026

2.10 The following 30 FIRs and 15 SRRs PfAs were approved by President of the Council and incorporated in the ATM Table I-1 and SAR Table I-1 of the eANP Volume I, respectively:

- a) Kabul FIR (Afghanistan);
- b) Brisbane, Melbourne FIRs and Australia SRR (Australia);
- c) Beijing, Lanzhou, Sanya, Wuhan FIRs and SRRs (China);
- d) Chennai, Delhi and Mumbai FIRs (India);
- e) Jakarta, Ujung Pandang FIRs and Jakarta SRR (Indonesia);
- f) Nadi FIR (Fiji);
- g) Vientiane FIR and SRR (Lao PDR);
- h) Kuala Lumpur, Kota Kinabalu FIRs and SRRs (Malaysia);
- i) Male FIR and SRR (Maldives);
- j) Ulaanbaatar FIR and SRR (Mongolia);
- k) Nauru FIR and SRR (Nauru);
- l) Kathmandu FIR and SRR (Nepal);
- m) Auckland Oceanic and New Zealand FIRs (New Zealand);
- n) Karachi FIR (Pakistan);
- o) Port Moresby FIR and SRR (Papua New Guinea);
- p) Manila FIR (Philippines);
- q) Singapore FIR and SRR (Singapore);
- r) Honiara FIR (Solomon Islands);
- s) Colombo FIR (Sri Lanka); and
- t) Anchorage Oceanic and Oakland Oceanic FIRs (United States).

2.11 The following PfAs have been submitted to the ICAO APAC Office and/or require further clarifications/justifications in coordination with adjacent States/Administrations:

- a) Dhaka FIR (Bangladesh);
- b) Paro FIR (Bhutan);
- c) Phnom Penh FIR (Cambodia);
- d) Guangzhou, Hong Kong, Kunming, Shenyang Shanghai, Taibei, Urumqi FIRs and SSRs (China);
- e) Pyongyang FIR and SRR (Democratic People's Republic of Korea);
- f) Nadi SRR (Fiji);
- g) Kolkata FIR (India);
- h) Fukuoka FIR (Japan);
- i) Yangon FIR (Myanmar);
- j) New Zealand SRR (New Zealand);
- k) Lahore FIR (Pakistan);
- l) Manila SRR (Philippines);
- m) Incheon FIR and SRR (Republic of Korea);
- n) Bangkok FIR (Thailand);
- o) Ha Noi and Ho Chi Minh FIRs (Viet Nam); and
- p) Alameda, Honolulu, Juneau, Seattle, and Oakland SRRs (United States).

2.12 The following areas are still unresolved:

- a) between the Lahore/Karachi FIRs and the Delhi FIR;
- b) between the Russian Federation's Khabarovsk FIR and the Fukuoka FIR;
- c) a narrow sliver of airspace claimed by Cambodia in the Gulf of Thailand based on three coordinates, affecting the Bangkok, Phnom Penh and Ho Chi Minh FIRs; and
- d) between Shanghai, Incheon and Taibei FIRs.

3. ACTION BY THE MEETING

3.1 The meeting is invited to:

- a) note the information contained in this paper;
- b) provide updates of any bilateral/trilateral discussion of unresolved FIR/SRR boundaries;
- c) provide the relevant data and charts to the ICAO APAC Office; and
- d) discuss any relevant matters as appropriate.

.....

APPENDIX A

FIR/SRR REVIEW CONSULTATION

State	FIR	Location Indicator	1 st Round Response to SL T 3/10.1.3 – AP043/15 (ATM)	2 nd Round Response to SL T 3/3.7 – AP153/15 (ATM)	3 rd Round Response to SL T 3/3.7 – AP039/16 (ATM)	4 th Round Response to SL T 3/3.6, T 3/3.7, T 3/3.8 – AP105/18 (ATM)	SRR	1 st Round Response to SL ref T 3/3.7 – AP153/15 (ATM)	2 nd Round response to SL ref T 3/3.7 – AP039/16 (ATM)	3 rd Round Response to SL ref T 3/3.6, T 3/3.7, T 3/3.8 – AP105/18 (ATM)	4 th Round Response to SL ref T 3/3.6, T 3/3.7, T 3/3.8 – AP128/19 (ATM)
Afghanistan	KABUL	OAKX	No	No	No	Yes	KABUL	No	No	Yes	Yes
Australia	BRISBANE	YBBB	Yes	Yes	Yes	Yes	AUSTRALIA	Yes	Yes	Yes	Yes
Australia	MELBOURNE	YMMM	Yes	Yes	Yes	Yes	--	--	--	--	--
Bangladesh	DHAKA	VGFR	Yes	No	Yes	Yes	DHAKA	No	Yes	Yes	Yes
Cambodia	PHNOM PENH	VDPF	No	No	No	Yes	PHNOM PENH	No	No	Yes	Yes
China	BEIJING	ZBPE	Yes	No	Yes	Yes	BEIJING	No	Yes	Yes	Yes
China	GUANGZHOU	ZGZU	Yes	No	Yes	Yes	GUANGZHOU	No	Yes	Yes	Yes
China	HONG KONG	VHHK	Yes	Yes	Yes	Yes	HONG KONG	Yes	Yes	Yes	Yes
China	KUNMING	ZPKM	Yes	No	Yes	Yes	KUNMING	No	Yes	Yes	Yes
China	LANZHOU	ZLHW	Yes	No	Yes	Yes	LANZHOU	No	Yes	Yes	Yes
China	SANYA	ZJSA	Yes	No	Yes	Yes	SANYA	No	Yes	Yes	Yes
China	SHANGHAI	ZYSH	Yes	No	Yes	Yes	SHANGHAI	No	Yes	Yes	Yes
China	SHENYANG	ZYSH	Yes	No	Yes	Yes	SHENYANG	No	Yes	Yes	Yes
China	URUMQI	ZWUQ	Yes	No	Yes	Yes	URUMQI	No	Yes	Yes	Yes
China	WUHAN	ZHWH	Yes	No	Yes	Yes	WUHAN	No	Yes	Yes	Yes
China	TAIBEI	RCAA	No	No	No	Yes	TAIBEI	No	No	Yes	Yes
DPR Korea	PYONGYANG	ZKKP	No	No	Yes	No	PYONGYANG	No	Yes	No	No
French Polynesia (France)	TAHITI	NTTT	No	No	Yes	Yes	TAHITI	No	Yes	Yes	Yes
India	CHENNAI	VOMF	Yes	No	Yes	Yes	CHENNAI	No	Yes	Yes	Yes
India	DELHI	VIDF	Yes	No	Yes	Yes	DELHI	No	Yes	Yes	Yes
India	KOLKATA	VECF	Yes	No	Yes	Yes	KOLKATA	No	Yes	Yes	Yes
India	MUMBAI	VABF	Yes	No	Yes	Yes	MUMBAI	No	Yes	Yes	Yes
Indonesia	JAKARTA	WIIF	No	No	No	Yes	JAKARTA	No		Yes	Yes
Indonesia	UJUNG PANDANG	WAAF	No	No	No	Yes	UJUNG PANDANG	No	No	Yes	Yes

State	FIR	Location Indicator	1 st Round Response to SL T 3/10.1.3 – AP043/15 (ATM)	2 nd Round Response to SL T 3/3.7 – AP153/15 (ATM)	3 rd Round Response to SL T 3/3.7 – AP039/16 (ATM)	4 th Round Response to SL T 3/3.6, T 3/3.7, T 3/3.8 – AP105/18 (ATM)	SRR	1 st Round Response to SL ref T 3/3.7 – AP153/15 (ATM)	2 nd Round response to SL ref T 3/3.7 – AP039/16 (ATM)	3 rd Round Response to SL ref T 3/3.6, T 3/3.7, T 3/3.8 – AP105/18 (ATM)	4 th Round Response to SL ref T 3/3.6, T 3/3.7, T 3/3.8 – AP128/19 (ATM)
Indonesia	--	--	--	--	--	--	BALI	No	No	--	Yes
Indonesia	--	--	--	--	--	--	BIAK	No	No	--	Yes
Fiji	NADI	NFFF			Yes	Yes	NADI	No	Yes	Yes	Yes
Japan	FUKUOKA	RJJJ	Yes	Yes	Yes	Yes	TOKYO	Yes	Yes	Yes	Yes
Japan	--	--	--	--	--	--	NAHA	No	No	--	Yes
Lao PDR	VIENTIANE	VLAO	No	No	No	Yes	VIENTIANE	No	No	Yes	Yes
Malaysia	KOTA KINABALU	WBFC	No	No	Yes	Yes	KOTA KINABALU	No	No	Yes	Yes
Malaysia	KUALA LUMPUR	WMFC	No	No	Yes	Yes	KUALA LUMPUR			Yes	Yes
Maldives	MALE	VRMF	No	Yes	Yes	Yes	MALE	Yes	Yes	Yes	Yes
Mongolia	ULAANBAATAR	ZMUB	No	No	No	Yes	ULAANBAATAR	No	No	Yes	Yes
Myanmar	YANGON	VYYY	No	No	Yes	Yes	YANGON	No	No	Yes	Yes
Nauru	NAURU	ANAU	No	No	Yes	Yes	NAURU	No	Yes	No	Yes
Nepal	KATHMANDU	VNSM	No	No	Yes	Yes	KATHMANDU	No	Yes	Yes	Yes
New Zealand	AUCKLAND OCEANIC	NZZO	Yes	Yes	Yes	Yes	NEW ZEALAND	Yes	Yes	Yes	Yes
New Zealand	NEW ZEALAND	NZZC	Yes	Yes	Yes	Yes		--	--	--	--
Pakistan	KARACHI	OPKR	No	No	Yes	Yes	KARACHI	No	Yes	Yes	Yes
Pakistan	LAHORE	OPLR	No	No	Yes	Yes	LAHORE	No	Yes	Yes	Yes
Papua New Guinea	PORT MORESBY	AYPM	No	No	No	Yes	PORT MORESBY	No	No	Yes	Yes
Philippines	MANILA	RPHI	No	Yes	Yes	Yes	MANILA	Yes	Yes	Yes	Yes
Republic of Korea	INCHEON	RKRR	No	Yes	No	Yes	INCHEON	Yes	No	Yes	Yes
Singapore	SINGAPORE	WSJC	Yes	Yes	Yes	Yes	SINGAPORE	Yes	Yes	Yes	Yes
Solomon Islands	HONIARA	AGGG	No	No	No	Yes	HONIARA			No	Yes
Sri Lanka	COLOMBO	VCCF	No	No	Yes	Yes	COLOMBO		Yes	Yes	Yes
Thailand	BANGKOK	VTBB	Yes	No	Yes	Yes	BANGKOK	Yes		Yes	Yes
United States	ANCHORAGE OCEANIC	PAZA	Yes	Yes	Yes	Yes	HONOLULU	Yes	Yes	Yes	Yes
United States	OAKLAND OCEANIC	KZAK	Yes	Yes	Yes	Yes	JUNEAU	Yes	Yes	Yes	Yes
United States	--	--	--	--	--	--	ELMENDORF	No	No	--	Yes
United States	--	--	--	--	--	--	SAN FRANCISCO	No	No	--	Yes





State	FIR	Location Indicator	1 st Round Response to SL T 3/10.1.3 – AP043/15 (ATM)	2 nd Round Response to SL T 3/3.7 – AP153/15 (ATM)	3 rd Round Response to SL T 3/3.7 – AP039/16 (ATM)	4 th Round Response to SL T 3/3.6, T 3/3.7, T 3/3.8 – AP105/18 (ATM)	SRR	1 st Round Response to SL ref T 3/3.7 – AP153/15 (ATM)	2 nd Round response to SL ref T 3/3.7 – AP039/16 (ATM)	3 rd Round Response to SL ref T 3/3.6, T 3/3.7, T 3/3.8 – AP105/18 (ATM)	4 th Round Response to SL ref T 3/3.6, T 3/3.7, T 3/3.8 – AP128/19 (ATM)
Viet Nam	HA NOI	VVHN	Yes	No	No	Yes	HA NOI	Yes	No	Yes	Yes
Viet Nam	HO CHI MINH	VVHM	Yes	No	No	Yes	HO CHI MINH	Yes	No	Yes	Yes

Follow up actions:

No.	State	FIR	Remarks
01	Afghanistan	Kabul	PfA 19/25-ATM approved by President of the Council and incorporated into eANP, Vol. I. SSR – PfA not submitted.
02	Australia	Melbourne Brisbane	PfA 19/36-ATM (Melbourne) approved by President of the Council and incorporated into eANP, Vol. I. PfA 20/17-ATM (Brisbane) approved by President of the Council and incorporated into eANP, Vol. I. SSR - PfA 21/22-ATM approved by President of the Council and incorporated into eANP, Vol. I.
03	Bangladesh	Dhaka	PfA submitted to ICAO APAC Office. In progress. SSR PfA – Pending confirmation of FIR data.
04	Bhutan	Paro	PfA submitted to ICAO APAC Office. Coordination required.
05	Cambodia	Phnom Penh	PfA submitted to ICAO APAC Office. Coordination with Viet Nam and Thailand required. SSR PfA – Pending confirmation of FIR data.
06	China	Beijing, Guangzhou, Hong Kong, Kunming, Lanzhou, Sanya, Shanghai, Shenyang, Urumqi, Wuhan, Taibei	PfA 20/13-ATM (Sanya) approved by HQ. Circulated to States on 12 March 2020. PfA 20/14 (Wuhan) approved by HQ. Circulated to States on 6 Mar 2020. PfA 20/15-ATM (Beijing) and PfA 20/16-ATM (Lanzhou) approved by HQ. Circulated to States on 11 Sep 2020. PfA 20/12-ATM (Hong Kong) is on hold. The boundary between Guangzhou and Hong Kong FIRs is being further enhanced. PfA –ATM (Shanghai) on hold. Further coordination to be conducted for resolution. SSR – PfA 21/18 ATM (Beijing), 21/19 ATM (Lanzhou), 21/20 ATM (Sanya), 21/21 ATM (Wuhan) approved by President of the Council and incorporated into eANP, Vol. I.
07	DPR Korea	Pyongyang	PfA submitted pending coordination
08	French Polynesia	Tahiti	PfA 19/10-ATM circulated to HQ on 10 Jun 2019. Extension of FIR was confirmed and in progress.
09	India	Chennai, Delhi, Mumbai Kolkata	PfA 19/32-ATM (Mumbai), PfA 19/33-ATM (Chennai) and PfA 19/34 – ATM (Delhi) approved by President of the Council. and incorporated into eANP, Vol. I. Kolkata PfA submitted to ICAO APAC Office. Bangladesh has agreed to the Dhaka/Kolkata FIR coordinates. Pending coordination. SSR - PfA not submitted.

No.	State	FIR	Remarks
10	Indonesia	Jakarta Ujung Pandang	PfA 20/32-ATM (Jakarta) and PfA 20/33-ATM (Ujung Pandang) and incorporated into eANP, Vol. I. PfA APAC 23/17-ATM (Jakarta) and SRR - PfA 23/18-SAR (Jakarta) approved by President of the Council and incorporated into eANP, Vol. I. Ujung Pandang SRR - PfA not submitted.
11	Fiji	Nadi	PfA 19/11-ATM approved by President of the Council and incorporated into eANP, Vol. I. SSR - PfA not submitted.
12	Japan	Fukuoka	PfA 19/35-ATM circulated to HQ. PfA on hold due to discrepancies with Russia/Khabarovsk FIR.
13	Lao PDR	Vientiane	PfA 20/44-ATM approved by HQ. PfA circulated to States on 13 Nov 2020. SRR - PfA 21/05-ATM approved by President of the Council and incorporated into eANP, Vol. I.
14	Malaysia	Kuala Lumpur Kota Kinabalu	PfA 20/34-ATM (Kuala Lumpur) and PfA 20/35-ATM (Kota Kinabalu) approved by HQ. PfAs circulated to States on 13 Nov 2020. SRR - 21/16 ATM (Kuala Lumpur), 21/17 ATM (Kota Kinabalu) approved by President of the Council and incorporated into eANP, Vol. I.
15	Maldives	Male	PfA 19/09-ATM approved by President of the Council and incorporated into eANP, Vol. I. SRR - PfA 21/04-ATM approved by President of the Council and incorporated into eANP, Vol. I.
16	Mongolia	Ulaanbaatar	PfA 19/21-ATM approved by President of the Council and incorporated into eANP, Vol. I. PfA 21/09 ATM approved by President of the Council and incorporated into eANP, Vol. I.
17	Myanmar	Yangon	PfA submitted to ICAO APAC Office. Coordination with Thailand required.
18	Nauru	Nauru	PfA 20/45-ATM approved by HQ. PfA circulated to States on 10 December 2020. SRR - PfA 21/10-ATM approved by President of the Council and incorporated into eANP, Vol. I.
19	Nepal	Kathmandu	PfA 20/37-ATM approved by HQ. PfA circulated to States on 13 Nov 2020. SRR - PfA 21/03-ATM approved by President of the Council and incorporated into eANP, Vol. I.
20	New Zealand	New Zealand Auckland Oceanic	PfA 19/26-ATM (New Zealand) and 19/27-ATM (Auckland Oceanic) approved by President of the Council and incorporated into eANP, Vol. I. SRR PfA submitted, pending coordination with Fiji.
21	Pakistan	Karachi Lahore	PfA 19/15-ATM (Lahore FIR) approved by HQ. PfAs circulated to States on 12 March 2020. PfA on hold.
22	Papua New Guinea	Port Moresby	PfA 20/19-ATM (Port Moresby) approved by President of Council. SRR data incorporated into ANP. SRR - PfA 21/06-ATM approved by President of the Council and incorporated into eANP, Vol. I.

No.	State	FIR	Remarks
23	Philippines	Manila	PfA 19/12-ATM approved by President of the Council and incorporated into eANP, Vol. I. SRR - PfA 21/11-ATM approved by HQ. PfA on hold.
24	Republic of Korea	Incheon	PfA 19/07-ATM circulated to HQ on 19 Apr 2019. PfA on hold.
25	Singapore	Singapore	PfA 20/36-ATM approved by HQ. PfA circulated to States on 13 Nov 2020. PfA APAC 23/17-ATM approved by President of the Council and incorporated into eANP, Vol. I. SRR - PfA 23/18-SAR approved by President of the Council and incorporated into eANP, Vol. I.
26	Solomon Islands	Honiara	PfA 20/18-ATM approved by President of the Council and incorporated into eANP, Vol. I. SRR - PfA not submitted.
27	Sri Lanka	Colombo	PfA 19/31 ATM approved by President of the Council and incorporated into eANP, Vol. I. SRR - PfA not submitted.
28	Thailand	Bangkok	FIR PfA submitted to ICAO APAC Office. Coordination with Viet Nam and Cambodia required. SRR PfA submitted pending coordination of FIR data
29	United States	Oakland Oceanic Anchorage Oceanic	PfA 19/29-ATM (Anchorage Oceanic) and 19/30-ATM (Oakland Oceanic) approved by President of the Council and incorporated into eANP, Vol. I. Alameda, Honolulu, Juneau and Seattle SRRs PfA submitted, verification in progress.
30	Viet Nam	Ha Noi Ho Chi Minh	PfA submitted to ICAO APAC Office. Coordination with Cambodia and Thailand required. SRR - PfA not submitted.

Legend:	
	PfA approved by President of the Council and incorporated into eANP, Vol. I
	PfA circulated to ICAO HQ, justification/coordination required
	PfA submitted to ICAO APAC Office, pending further coordination
	PfA not submitted to ICAO APAC Office

APPENDIX B

**FLIGHT INFORMATION REGIONS (FIR)/UPPER INFORMATION REGIONS (UIR) IN THE ASIA/PACIFIC REGIONS
– WORKING DRAFT**

EXPLANATION OF THE TABLE

- Column 1. Name of the FIR/UIR / Location Indicator according to ICAO Doc 7910
- Column 2. Description of FIR/UIR lateral limits;
- a) Describe separately in the table the limits of the UIRs if they are not similar to the FIRs limits.
- Column 3. Remarks — additional information, if necessary.
- a) Describe vertical limits if necessary.

FIR/UIR Location Indicator	Lateral limits coordinates	Remarks
1	2	3
Anchorage Oceanic FIR (PAZA)	A line joining 544009N 170000E 513000N 170000E 510500N 173440E 500800N 176340W 454200N 162550E 500500N 159000E 540000N 169000E 544009N 170000E.	Vertical limits: SFC to UNL

Comments:

- a. PfA APAC-I 19/29-ATM approved by President of the Council and data incorporated into eANP, Vol. I.

FIR/UIR Location Indicator	Lateral limits coordinates	Remarks
1	2	3
Auckland Oceanic FIR (NZZO)	300000S 1310000W 900000S 0000000E 300000S 1630000E 280000S 1680000E 250000S 1712500E 250000S 1800000E 153245.1S 1754031.2W 050000S 1710000W 050000S 1570000W 300000S 1570000W 300000S 1310000W excluding the New Zealand FIR.	Vertical limits: SFC to FL999

Comments:

- a. PFA APAC-I 19/27-ATM approved by President of the Council and data incorporated into eANP, Vol. I.

FIR/UIR Location Indicator	Lateral limits coordinates	Remarks
1	2	3
Bangkok FIR (VTBB)	113900N 1025430E 100000N 1021500E 070000N 1030000E 064500N 1024000E 061500N 1021500E thence following the national boundary to 063000N 0993000E 071500N 0980000E 100000N 0963000E 095600N 0983300E thence following the national boundary to 113900N 1025430E.	Vertical limits: SFC to UNL

Comments:

- a. PfA submitted. Coordination with Viet Nam and Cambodia required.

FIR/UIR Location Indicator	Lateral limits coordinates	Remarks
1	2	3
<p>Beijing FIR (ZBPE)</p>	<p>A line joining 452317N 1152115E 431442N 1173100E 421500N 1180500E 395400N 1192100E 393000N 1195200E 381500N 1200000E 380700N 1193300E 372912N 1173000E 364000N 1152400E 361900N 1143000E 360400N 1134836E 343200N 1101500E 353200N 1101800E 372800N 1104400E 382200N 1103600E 384400N 1094100E 392600N 1083000E 401842N 1070012E 404300N 1055500E 414451N 1051345E thence following the national boundary of the People’s Republic of China to 452317N 1152115E.</p>	<p>Vertical limits: SFC to UNL</p>

Comments:

- a. PFA APAC-I 20/15-ATM approved by President of the Council and data incorporated into eANP, Vol. I.

FIR/UIR Location Indicator	Lateral limits coordinates	Remarks
1	2	3
<p>Brisbane FIR (YBBB)</p>	<p>140000S 1611500E 174000S 1630000E 450000S 1630000E 450000S 1500000E 443357S 1500000E 435103S 1503953E 430000S 1510000E 381119S 1501914E 365643S 1504503E then along the anticlockwise arc of a circle of 120.00NM radius centred on 345700S 1503200E to 351859S 1525550E 342822S 1514929E then along the anticlockwise arc of a circle of 45NM radius centred on 335638S 1511057E (SY/DME) to 331611S 1504709E 333003S 1501311E 331836S 1500031E 331103S 1495213E 324914S 1492824E 324303S 1492142E 320540S 1484951E 290000S 1463200E 290000S 1433000E 261331S 1382324E 221751S 1363807E 215132S 1362225E 212959S 1361944E 211209S 1315024E 231313S 1282749E</p>	<p>Vertical limits: SFC to UNL</p>

	232349S 1260332E 213119S 1243304E 200318S 1214022E 190000S 1201500E 140813S 1150832E 120000S 1143000E 120000S 1232000E 092000S 1265000E. 070000S 1350000E 095000S 1394000E 095000S 1410000E 093700S 1410200E 091542S 1420330E 091248S 1420624E 091154S 1420836E 091200S 1421018E 091124S 1421254E 091136S 1421406E 091354S 1421624E 091606S 1422042E 092206S 1422942E 092148S 1423130E 092236S 1423330E 092124S 1423530E 092024S 1424142E 092018S 1424354E 091924S 1424818E 090800S 1435230E 092400S 1441400E 095634S 1440521E 100515S 1435852E 100850S 1435711E 101751S 1435445E 102244S 1435525E 102638S 1435424E	
--	---	--

	103110S 1435441E 103457S 1435536E 104114S 1435810E 104641S 1435959E 105205S 1440046E 105900S 1440200E 110224S 1440233E 110637S 1440351E 111107S 1440421E 111413S 1440338E 111510S 1440307E 112935S 1440131E 113000S 1440136E 114330S 1440420E 120000S 1440000E 120000S 1550000E 140000S 1550000E 140000S 1611500E.	
--	---	--

Comments:

- a. PfA APAC-I 20/17-ATM approved by President of the Council and data incorporated into eANP, Vol. I.
- b. PfA APAC-I 25/19-ATM approved by President of the Council and data incorporated into eANP, Vol. I.

FIR/UIR Location Indicator	Lateral limits coordinates	Remarks
1	2	3
Chennai FIR (VOMF)	A line joining 133000N 0942500E 060000N 0942500E 060000N 0920000E 100000N 0820000E 100000N 0800000E 060000N 0780000E 060000N 0740000E 073000N 0740000E 073000N 0720000E 150000N 0720000E 150000N 0733500E 161700N 0730000E 162200N 0733400E 162600N 0741100E 163600N 0752800E 164000N 0760000E 180000N 0760000E 191900N 0760000E 194300N 0771000E 184300N 0820000E 184100N 0824900E 154200N 0855400E 140000N 0920000E 133000N 0942500E.	Vertical limits: SFC to UNL

Comments:

- a. PFA APAC-I 19/33-ATM approved by President of the Council and data incorporated into eANP, Vol. I.

FIR/UIR Location Indicator	Lateral limits coordinates	Remarks
1	2	3
Colombo FIR (VCCF)	A line joining 060000N 0920000E 020000S 0920000E 020000S 0780000E 060000N 0780000E 100000N 0800000E 100000N 0820000E 060000N 0920000E.	Vertical limits: SFC to UNL

Comments:

- a. PFA APAC-I 19/31-ATM approved by President of the Council and data incorporated into eANP, Vol. I.

FIR/UIR Location Indicator	Lateral limits coordinates	Remarks
1	2	3
<p>Delhi FIR (VIDF)</p>	<p>A line joining 273424N 0824443E 270922N 0813300E 264531N 0805340E 262401N 0801154E 251701N 0794954E 253601N 0793554E 250801N 0785955E 250001N 0790455E 250000N 0705500E thence following the national boundary to 273424N 0824443E.</p>	<p>Vertical limits: SFC to UNL</p>

Comments:

- a. PfA APAC-I 19/34-ATM approved by President of the Council and data incorporated into eANP, Vol. I.

FIR/UIR Location Indicator	Lateral limits coordinates	Remarks
1	2	3
<p>Dhaka FIR (VGFR)</p>	<p>202246N 922409E thence along the Bangladesh- Myanmar Maritime Boundary to 202639N 920951E 210125N 915353E 212533N 900720E 212432N 892022E 212644N 891059E 213840N 890920E thence along national boundary between Bangladesh/India and Bangladesh/Myanmar to 202246N 922409E</p>	<p>Vertical limits: SFC to UNL</p>

Comments:

- a. PfA submitted. In progress.

FIR/UIR Location Indicator	Lateral limits coordinates	Remarks
1	2	3
<p>Fukuoka FIR (RJJJ)</p>	<p>500500N 1590000E 454200N 1625500E 430000N 1650000E 270000N 1650000E 270000N 1550000E 210000N 1550000E 210000N 1213000E 233000N 1240000E 300000N 1240000E 300000N 1252500E 323000N 1265000E 323000N 1273000E 344000N 1291000E 373000N 1330000E 380000N 1330000E 383800N 1333900E 403000N 1355600E 454500N 1400000E 454500N 1420000E 443000N 1454000E then between Hokkaido and Kunashiri Islands from 443000N 1454000E to 432000N 1455000E 430000N 1465000E 450000N 1500000E 500500N 1590000E.</p>	

Comments:

- a. Pfa APAC-I 19/35-ATM circulated to HQ on 30 October 2019.

- b. PfA on hold, Russia federation wished to retain coordinate as approved by ICAO Council President EUR/NAT 08/11-ATS, 03 Sep 2009.
- c. ICAO proposed to discuss this further via bilateral discussion between the Russian Federation and Japan, with the two ROs supporting as required.

FIR/UIR Location Indicator	Lateral limits coordinates	Remarks
1	2	3
<p>Guangzhou FIR (ZGZU)</p>	<p>A line joining 290200N 1143400E 264200N 1135700E 260300N 1140700E 254600N 1145224E 250530N 1152500E 244024N 1152430E 242200N 1164200E 234200N 1171100E 233000N 1173000E 230000N 1173000E 222430N 1154000E 222430N 1143000E thence following the Hong Kong Special Administrative Region boundary to 222130N 1135200E a line joining 222130N 1135200E 193000N 1113000E 203000N 1113000E 203000N 1080300E 211235N 1081231E thence following the national boundary of the People’s Republic of China to 231145N 1053230E a line joining 231145N 1053230E 243900N 1054800E 254200N 1073900E 263500N 1091900E</p>	<p>Vertical limits: SFC to UNL</p>

	284700N 1092300E 293100N 1092400E 292300N 1130712E 290200N 1143400E.	
--	---	--

Comments:

- a. PfA submitted. Boundary between Hong Kong and Guangzhou FIRs is being further enhanced. PfA on hold.

FIR/UIR Location Indicator	Lateral limits coordinates	Remarks
1	2	3
Ha Noi FIR (VVHN)	211235N 1081231E 203000N 1080300E 195733N 1075547E 191604N 1071123E 182028N 1074053E 172510N 1084437E 171300N 1080000E 170000N 1071800E 170000N 1063258E thence following national boundary to 212812.5N 1080604.3E 212801.7N 1080601.6E 212750.1N 1080557.7E 212739.5N 1080551.5E 212728.2N 1080539.9E 212723.1N 1080538.8E 212708.2N 1080543.7E 211632N 1080805E 211235N 1081231E.	Vertical limits: SFC to UNL

Comments:

- a. PfA submitted. Coordination with Cambodia and Thailand required.

FIR/UIR Location Indicator	Lateral limits coordinates	Remarks
1	2	3
Ho Chi Minh FIR (VVHM)	143000N 1140000E 103000N 1140000E 070000N 1080000E 070000N 1030000E 090000N 1024000E 102200N 1034400E thence following national boundary to 170000N 1063258E 171300N 1080000E 170000N 1071800E 172510N 1084437E 143000N 1120000E 143000N 1140000E.	Vertical limits: SFC to UNL

Comments:

- a. PfA submitted. Coordination with Cambodia and Thailand required.

FIR/UIR Location Indicator	Lateral limits coordinates	Remarks
1	2	3
<p>Hong Kong FIR (VHHK)</p>	<p>A line joining 230000N 1173000E 210000N 1173000E 164000N 1140000E 193000N 1113000E 222130N 1135200E thence following the Hong Kong Special Administrative Region boundary to 222430N 1143000E a line joining 222430N 1143000E 222430N 1154000E 230000N 1173000E.</p>	<p>Vertical limits: SFC to UNL</p>

Comments:

- a. PfA APAC-I 20/12-ATM approved by HQ. PfA circulated to States on 12 March 2020.
- b. Hong Kong FIR PfA is on hold. The boundary between Guangzhou and Hong Kong FIRs is being further enhanced.

FIR/UIR Location Indicator	Lateral limits coordinates	Remarks
1	2	3
Honiara FIR (AGGG)	103000S 1664500E 114800S 1665200E 140000S 1630000E 140000S 1550000E 071900S 1550000E 065533S 1553808E 065533S 1554137E 065050S 155523E 064104S 1560136E 063950S 1560223E 063300S 1560209E 045000S 1590000E 045000S 1600000E 103000S 1664500E.	Vertical limits: SFC to UNL Remarks: The responsibility for provision of air traffic services in Honiara Flight Information Region (FIR) between FL 245 and FL 600, is vested with Brisbane Area Control Centre (ACC).

Comments:

- a. Pfa APAC-I 20/18-ATM approved by President of the Council and data incorporated into eANP, Vol. I.

FIR/UIR Location Indicator	Lateral limits coordinates	Remarks
1	2	3
Incheon FIR (RKRR)	383800N 1333900E 380000N 1330000E 373000N 1330000E 344000N 1291000E 323000N 1273000E 323000N 1265000E 300000N 1252500E 300000N 1240000E 380000N 1240000E 380000N 1245100E following the national boundary to 383800N 1282200E a line joining 383800N 1282200E 383800N 1333900E.	Vertical limits: SFC to UNL

Comments:

- a. PfA APAC-I 19/07-ATM circulated to HQ on 19 Apr 2019. PfA on hold due to discrepancies with adjacent FIRs.

FIR/UIR Location Indicator	Lateral limits coordinates	Remarks
1	2	3
<p>Jakarta FIR (WIFF)</p>	<p>011300N 1133500E 030000S 1102300E 082000S 1102300E 120000S 1143000E 120000S 1070000E 020000S 0920000E 060000N 0920000E 060000N 0942500E 060000N 0973000E 013900N 1021000E 011300N 1033000E 011408N 1033142E 011200N 1033900E 011046N 1034015E 010800N 1034500E 011500N 1040000E 011800N 1043000E 012921N 1043441E 011947N 1044606E 021838N 1052205E 023641N 1051311E 024348N 1050854E 025010N 1051210E 031453N 1052619E 031727N 1052959E 033045N 1055130E 041312N 1071743E 043820N 1073315E 045203N 1074625E 045904N 1075525E 050012N 1080132E 045700N 1081619E</p>	<p>Vertical limits: SFC to UNL</p> <p>Remarks: The responsibility for providing air traffic services to flights within the following portion of the Jakarta FIR is delegated by Indonesia to Singapore:</p> <p>The area bounded by 031727N 1052959E, 012450N 1061648E, 001030N 1045656E, 000000N 1050340E, 000000N 1044330E, thence around the arc of a circle radius 90 NM centered on 011324N 1035124E to 013430N 1022353E, 011300N 1033000E, 011408N 1033142E, 011200N 1033900E, 011046N 1034015E, 010800N 1034500E, 011500N 1040000E, 011800N 1043000E, 012921N 1043441E, 011947N 1044606E, 021838N 1052205E, 023641N 1051311E, 024348N 1050854E, 025010N 1051210E, 031453N 1052619E, 031727N 1052959E, excluding the Tanjungpinang terminal control area (TMA) and control zone</p>

	025050N 1091629E 021500N 1083000E 010000N 1083000E 010000N 1085400E thence along Kalimantan west coast to the national boundary of Indonesia/Malaysia to 011300N 1133500E.	
--	--	--

Comments:

- a. PFA APAC-I 23/17-ATM approved by President of the Council and data incorporated into eANP, Vol. I.

FIR/UIR Location Indicator	Lateral limits coordinates	Remarks
1	2	3
Kabul FIR (OAKX)	371105N 0674723E thence following the national boundary to 371105N 0674723E.	Vertical limits: SFC to FL510

Comments:

- a. PfA APAC-I 19/25-ATM approved by President of the Council and data incorporated into eANP, Vol. I.

FIR/UIR Location Indicator	Lateral limits coordinates	Remarks
1	2	3
Karachi FIR (OPKR)	300000N 0733500E thence following the national boundary to 234000N 0681000E 233000N 0682300E 233000N 0643000E 233000N 0612000E 244000N 0612000E 251040N 0613550E thence following the national boundary to 300000N 0661900E 300000N 0733500E.	Vertical limits: SFC to UNL

Comments:

- a. PfA APAC-I 19/17-ATM approved by President of the Council and data incorporated into eANP, Vol. I.

FIR/UIR Location Indicator	Lateral limits coordinates	Remarks
1	2	3
Kathmandu FIR (VNSM)	302645N 0813744E thence following the national boundary to 302645N 0813744E.	Vertical limits: SFC to UNL

Comments:

- a. PfA APAC-I 20/37-ATM approved by President of the Council and data incorporated into eANP, Vol. I.

FIR/UIR Location Indicator	Lateral limits coordinates	Remarks
1	2	3
<p>Kolkata FIR (VECF)</p>	<p>A line joining 210000N 0920000E 140000N 0920000E 154200N 0855400E 184100N 0824900E 184300N 0820000E 213009N 0803537E 222850N 0802116E 231049N 0800334E 250001N 0790455E 250801N 0785955E 253601N 0793554E 251701N 0794954E 262401N 0801154E 264531N 0805340E 270922N 0813300E 273424N 0824443E thence following the national boundary to 213800N 0891000E a line joining 213800N 0891000E 210000N 0920000E.</p>	<p>Vertical limits: SFC to UNL</p>

Comments:

- a. PfA submitted.
- b. Bangladesh has requested to revise and update Dhaka FIR to cover the country’s entire territorial airspace.
- c. Bangladesh has agreed to the Dhaka/Kolkata FIR based on agreement in 1963 RAN meeting. Nil updated from Myanmar.
- d. Pending coordination with Bhutan required.

FIR/UIR Location Indicator	Lateral limits coordinates	Remarks
1	2	3
Kota Kinabalu FIR (WBFC)	082500N 1163000E 073000N 1173000E 040000N 1200000E 040000N 1180000E thence along the national boundary of Malaysia and Indonesia to 010000N 1085400E 010000N 1083000E 021500N 1083000E 082500N 1163000E.	Vertical limits: SFC to UNL

Comments:

- a. PfA APAC-I 20/35-ATM approved by President of the Council and data incorporated into eANP, Vol. I.

FIR/UIR Location Indicator	Lateral limits coordinates	Remarks
1	2	3
Kuala Lumpur FIR (WMFC)	064500N 1024000E 045000N 1034400E 034000N 1034000E 023600N 1044500E 012000N 1042000E thence along 012000N to the national boundary of Malaysia/Singapore; thence along the national boundary of Malaysia/Singapore to 011700N 1033600E 011300N 1033000E 013900N 1021000E 060000N 0973000E 060000N 0942500E 100000N 0942500E 100000N 0963000E 071500N 0980000E 063000N 0993000E thence along the national boundary of Malaysia/Thailand to 061500N 1021500E 064500N 1024000E.	Vertical limits: SFC to UNL

Comments:

- a. PfA APAC-I 20/34-ATM approved by President of the Council and data incorporated into eANP, Vol. I.

FIR/UIR Location Indicator	Lateral limits coordinates	Remarks
1	2	3
<p>Kunming FIR (ZPKM)</p>	<p>A line joining 315400N 1093100E 293100N 1092400E 284700N 1092300E 263500N 1091900E 254200N 1073900E 243900N 1054800E 231145N 1053230E thence following the national boundary of the People’s Republic of China to 302630N 0813730E; a line joining 302630N 0813730E 321806N 0840318E 362500N 0872300E 360200N 0890100E 325200N 0915500E 320600N 0970000E 314900N 0983500E 325500N 1014200E 333500N 1035300E 322700N 1054900E 321400N 1072400E 315400N 1093100E.</p>	<p>Vertical limits: SFC to UNL</p>

Comments:

- a. PfA submitted. Validation of the coordinates in progress.

FIR/UIR Location Indicator	Lateral limits coordinates	Remarks
1	2	3
Lahore FIR (OPLR)	A line joining 300000N 0733500E 300000N 0661900E thence following the national boundary to 300000N 0733500E.	Vertical limits: SFC to UNL

Comments:

- a. PfA APAC-I 19/15-ATM approved by HQ. PfA circulated to States on 12 March 2020. Coordination with India required.
- b. April 2023: Pakistan sent an email to Airports Authority of India (AAI) for confirmation of the new coordinates on Pakistan – India international border (270700N 0693330E) for revised FIR boundary between Karachi, Lahore and Delhi FIRs. AAI will examine and revert accordingly.

FIR/UIR Location Indicator	Lateral limits coordinates	Remarks
1	2	3
<p>Lanzhou FIR (ZLHW)</p>	<p>A line joining 414451N 1051345E 404300N 1055500E 401842N 1070012E 392600N 1083000E 384400N 1094100E 382200N 1103600E 372800N 1104400E 353200N 1101800E 343200N 1101500E 340500N 1102900E 333200N 1105200E 315400N 1093100E 321400N 1072400E 322700N 1054900E 333500N 1035300E 325500N 1014200E 314900N 0983500E 320600N 0970000E 325200N 0915500E 360200N 0890100E 362500N 0872300E 382100N 0901300E 414800N 0950800E 425500N 0962014E thence following the national boundary of the People’s Republic of China to 414451N 1051345E.</p>	<p>Vertical limits: SFC to UNL</p>

Comments:

- a. PfA APAC-I 20/16-ATM approved by President of the Council and data incorporated into eANP, Vol. I.

FIR/UIR Location Indicator	Lateral limits coordinates	Remarks
1	2	3
Male FIR (VRMF)	A line joining 060000N 0780000E 020000S 0780000E 060000S 0750000E 060000S 0680000E 000000N/S 0680000E 030500N 0700000E 073000N 0700000E 073000N 0720000E 073000N 0740000E 060000N 0740000E 060000N 0780000E.	Vertical limits: SFC to UNL

Comments:

- a. PFA APAC-I 19/09-ATM approved by President of the Council and data incorporated into eANP, Vol. I.

FIR/UIR Location Indicator	Lateral limits coordinates	Remarks
1	2	3
Manila FIR (RPHI)	A line joining 210000N 1300000E 070000N 1300000E 040000N 1323200E 040000N 1200000E 073000N 1173000E 082500N 1163000E 103000N 1140000E 164000N 1140000E 210000N 1173000E 210000N 1300000E.	Vertical limits: SFC to UNL

Comments:

- a. PfA APAC-I 19/12-ATM approved by President of the Council and data incorporated into eANP, Vol. I.

FIR/UIR Location Indicator	Lateral limits coordinates	Remarks
1	2	3
Melbourne FIR (YMMM)	290000S 1463200E 320540S 1484951E 324303S 1492142E 324914S 1492824E 331103S 1495213E 331836S 1500031E 333003S 1501311E 331611S 1504709E then along the clockwise arc of a circle of 45NM radius centred on 335638S 1511057E (SY/DME) to 342822S 1514929E 351859S 1525550E then along the clockwise arc of a circle of 120NM radius centred on 345700S 1503200E to 365643S 1504503E 381119S 1501914E 430000S 1510000E 435103S 1503953E 443357S 1500000E 450000S 1500000E 450000S 1630000E 900000S 0000000W/E (South Pole) 060000S 0750000E 020000S 0780000E 020000S 0920000E 120000S 1070000E 120000S 1143000E 140813S 1150832E 190000S 1201500E 200318S 1214022E	Vertical limits: SFC to UNL

	213119S 1243304E 232349S 1260332E 231313S 1282749E 211209S 1315024E 212959S 1361944E 215132S 1362225E 221751S 1363807E 261331S 1382324E 290000S 1433000E 290000S 1463200E.	
--	---	--

Comments:

- a. PfA APAC-I 19/36-ATM approved by President of the Council and data incorporated into eANP, Vol. I.
- b. PfA APAC-I 25/19-ATM approved by President of the Council and data incorporated into eANP, Vol. I.

FIR/UIR Location Indicator	Lateral limits coordinates	Remarks
1	2	3
<p>Mumbai FIR (VABF)</p>	<p>A line joining 250001N 0790455E 231049N 0800334E 222850N 0802116E 213009N 0803537E 184300N 0820000E 194300N 0771000E 191900N 0760000E 180000N 0760000E 164000N 0760000E 163600N 0752800E 162600N 0741100E 162200N 0733400E 161700N 0730000E 150000N 0733500E 150000N 0720000E 073000N 0720000E 073000N 0700000E 030500N 0700000E 000000N 0680000E 060000S 0680000E 060000S 0600000E 194800N 0600000E 233000N 0643000E then eastwards along 233000N parallel until it meets the Indian coastline at 233000N 0682300E then northwards along the coastline to 234000N 0681000E; then along the common border</p>	<p>Vertical limits: SFC to UNL</p>

	between India and Pakistan to 250000N 0705500E 250001N 0790455E.	
--	--	--

Comments:

- a. PfA APAC-I 19/32-ATM approved by President of the Council and data incorporated into eANP, Vol. I.

FIR/UIR Location Indicator	Lateral limits coordinates	Remarks
1	2	3
Nadi FIR (NFFF)	A line joining 033000N 180000E 050000S 180000W 050000S 171000W 153245.1S 1754031.2W 250000S 180000E 250000S 171250E 280000S 168000E 300000S 163000E 174000S 163000E 140000S 161150E 140000S 163000E 100000S 170000E 033000N 170000E 033000N 180000E.	Vertical limits: SFC to UNL

Comments:

- a. PfA APAC-I 19/11-ATM approved by President of the Council and data incorporated into eANP, Vol. I.

FIR/UIR Location Indicator	Lateral limits coordinates	Remarks
1	2	3
Nauru FIR (ANAU)	033000N 1700000E 100000S 1700000E 114800S 1665200E 103000S 1664500E 045000S 1600000E 033000N 1600000E 033000N 1700000E.	Vertical limits: SFC to UNL

Comments:

- a. PFA APAC-1 20/45-ATM approved by President of the Council and data incorporated into eANP, Vol. I.

FIR/UIR Location Indicator	Lateral limits coordinates	Remarks
1	2	3
<p>New Zealand FIR (NZZC) (Christchurch FIR)</p>	<p>382700S 1794400W 425130S 1750300E 480900S 1681600E 455500S 1651800E 412527S 1702324E the arc of a circle of 200 NM radius centered on 412014S 1744901.1E from 412527S 1702324E clockwise to 390738.1S 1713321.7E the arc of a circle of 200 NM radius centered on 370016.7S 1744849.1E from 390738.1S 1713321.7E clockwise to 373229.5S 1785608.9E a line joining 373229.5S 1785608.9E 382700S 1794400W.</p>	<p>Vertical limits: SFC to 999</p>

Comments:

- a. PfA APAC-I 19/26-ATM approved by President of the Council and data incorporated into eANP, Vol. I.

FIR/UIR Location Indicator	Lateral limits coordinates	Remarks
1	2	3
Oakland Oceanic (KZAK)	A line joining 524300N 135000W 510000N 133450W 482000N 128000W 450000N 126300W 405900N 126540W 405000N 127000W 373023N 127000W 362743N 126560W 353000N 125500W 360000N 124120W 343000N 123150W 304500N 120500W 300000N 120000W 033000N 120000W 033000N 145000W 050000S 155000W 050000S 180000W/E 033000N 180000W/E 033000N 160000E 000000N/S 160000E 000000N/S 141000E 033000N 141000E 033000N 133000E 070000N 130000E 210000N 130000E 210000N 155000E 270000N 155000E 270000N 165000E 430000N 165000E 454200N 162550E 500800N 176340W	Vertical limits: SFC to UNL

	512400N 1674900W 533000N 1600000W 560000N 1530000W 564542N 1514500W 532203N 1370000W 524300N 1350000W.	
--	---	--

Comments:

- a. PfA APAC-I 19/30-ATM approved by President of the Council and data incorporated into eANP, Vol. I.

FIR/UIR Location Indicator	Lateral limits coordinates	Remarks
1	2	3
Paro FIR	<i>Details pending</i>	Vertical limits: SFC to UNL

Comments:

- a. PfA submitted. Coordination with adjacent States required.

FIR/UIR Location Indicator	Lateral limits coordinates	Remarks
1	2	3
Phnom Penh FIR (VDPF)	102200N 1034400E 090000N 1024000E 070000N 1030000E 100000N 1021500E 113900N 1025430E thence following the national boundary to 102200N 1034400E.	Vertical limits: SFC to UNL

Comments:

- a. PfA submitted was not supported by ICAO APAC Office due to the sliver of airspace between Ho Chi Minh and Bangkok FIRs.
- b. Coordination with Thailand and Viet Nam required.

FIR/UIR Location Indicator	Lateral limits coordinates	Remarks
1	2	3
Port Moresby FIR (AYPM)	000000N/S 1600000E 045000S 1600000E 045000S 1590000E 063300S 1560209E 063950S 1560223E 064104S 1560136E 065050S 1555523E 065533S 1554137E 065533S 1553808E 071900S 1550000E 120000S 1550000E 120000S 1440000E 114330S 1440420E 113000S 1440136E 112935S 1440131E 111510S 1440307E 111413S 1440338E 111107S 1440421E 110637S 1440351E 110224S 1440233E 105900S 1440200E 105205S 1440046E 104641S 1435959E 104114S 1435810E 103457S 1435536E 103110S 1435441E 102638S 1435424E 102244S 1435525E 101751S 1435445E 100850S 1435711E 100515S 1435852E 095634S 1440521E	Vertical limits: SFC to UNL

	<p>092400S 1441400E 090800S 1435230E 091924S 1424818E 092018S 1424354E 092024S 1424142E 092124S 1423530E 092236S 1423330E 092148S 1423130E 092206S 1422942E 091606S 1422042E 091354S 1421624E 091136S 1421406E 091124S 1421254E 091200S 1421018E 091154S 1420836E 091248S 1420624E 091542S 1420330E 093700S 1410200E 065334S 1410106E thence following the Fly River to 061914S 1410000E 000000N/S 1410000E 000000N/S 1600000E.</p>	
--	---	--

Comments:

- a. PfA APAC-I 20/19-ATM approved by President of the Council and data incorporated into eANP, Vol. I.

FIR/UIR Location Indicator	Lateral limits coordinates	Remarks
1	2	3
Pyongyang FIR (ZKKP)	414000N 1313100E 403000N 1355600E 383800N 1333900E 383800N 1282200E THENCE FOLLOWING THE MILITARY DEMARCATION LINE TO 380000N 1240000E 395100N 1241000E THENCE FOLLOWING THE NATIONAL BOUNDARY TO 421736N 1304148E	Vertical limits: SFC to UNL

Comments:

- a. Coordinate 414000N 1313100E (boundary with Kharbarovsk FIR) to be confirm with EUR/NAT office
- b. Coordinate 403000N 1355600E (confluence of Kharbarovsk, Fukuoka & Pyongyang FIR). Subject to issues with Khabarovsk, Fukuoka FIR.
- c. Coordinate 395100N 1241000E is different from Shenyang FIR PfA.

FIR/UIR Location Indicator	Lateral limits coordinates	Remarks
1	2	3
Sanya FIR (ZJSA)	A line joining 203000N 1113000E 193000N 1113000E 164000N 1140000E 143000N 1140000E 143000N 1120000E 182028N 1074053E 191604N 1071123E 195733N 1075547E 203000N 1080300E 203000N 1113000E.	Vertical limits: SFC to UNL

Comments:

- a. PfA APAC-I 20/13-ATM approved by President of the Council and data incorporated into eANP, Vol. I.

FIR/UIR Location Indicator	Lateral limits coordinates	Remarks
1	2	3
Shanghai FIR (ZSHA)	A line joining 380000N 1240000E 323000N 1240000E 323000N 1265000E 290000N 1254900E 290000N 1240000E 262908N 1212656E 250000N 1200000E 230000N 1173000E 233000N 1173000E 234200N 1171100E 242200N 1164200E 244024N 1152430E 250530N 1152500E 254600N 1145224E 260300N 1140700E 264200N 1135700E 290200N 1143400E 300500N 1155600E 325430N 1154848E 343100N 1155430E 351448N 1152700E 364000N 1152400E 372912N 1173000E 380700N 1193300E 381500N 1200000E 381500N 1230000E 380000N 1240000E.	Vertical limits: SFC to UNL

Comments:

- a. Historical records show that Shanghai FIR's eastern boundary is a straight line joining 380000N 1240000E to 290000N 1240000E. The data submitted by China is 380000N 1240000E, 323000N 1240000E, 3230000N 1265000E, 290000N 1254900E, 290000N 1240000E.

FIR/UIR Location Indicator	Lateral limits coordinates	Remarks
1	2	3
<p>Shenyang FIR (ZYSH)</p>	<p>394941N 1241006E 380000N 1240000E 381500N 1230000E 381500N 1200000E 393000N 1195200E 395400N 1192100E 421500N 1180500E 431442N 1173100E 452317N 1152115E thence following the national boundary of the People’s Republic of China to 394941N 1241006E.</p>	<p>Vertical limits: SFC to UNL</p>

Comments:

- a. PfA submitted. Validation of the coordinates in progress.

FIR/UIR Location Indicator	Lateral limits coordinates	Remarks
1	2	3
<p>Singapore FIR (WSJC)</p>	<p>082500N 1163000E 025050N 1091629E 045700N 1081619E 050012N 1080132E 045904N 1075525E 045203N 1074625E 043820N 1073315E 041312N 1071743E 033045N 1055130E 031727N 1052959E 031453N 1052619E 025010N 1051210E 024348N 1050854E 023641N 1051311E 021838N 1052205E 011947N 1044606E 012921N 1043441E 011800N 1043000E 011500N 1040000E 010800N 1034500E 011046N 1034015E 011200N 1033900E 011408N 1033142E 011700N 1033600E thence east along the national boundary of Singapore/Malaysia, thence along 012000N to 012000N 1042000E 023600N 1044500E 034000N 1034000E 045000N 1034400E 064500N 1024000E</p>	<p>Vertical limits: SFC to UNL</p> <p>Remarks: The responsibility for providing air traffic services to flights within the following portions of the Singapore FIR is vested in the Kuala Lumpur ACC:</p> <p>The airspace between a line from 023600N 1044500E to 022715N 1051750E 023641N 1051311E 024348N 1050854E 025010N 1051210E 031453N 1052619E 031727N 1052959E 033045N 1055130E 041312N 1071743E 043820N 1073315E 045203N 1074625E 045904N 1075525E 050012N 1080132E 045700N 1081619E 025050N 1091629E, in the south, and a line along 060000N in the north, and from surface level to FL150 west of longitude 105E and from surface level to FL200 east of longitude 105E.</p>

	07000N 103000E 07000N 108000E 10300N 114000E 08250N 116300E.	
--	---	--

Comments:

- a. PfA APAC-I 23/17-ATM approved by President of the Council and data incorporated into eANP, Vol. I.

FIR/UIR Location Indicator	Lateral limits coordinates	Remarks
1	2	3
Tahiti FIR (NTTT)	<i>Details pending</i>	Vertical limits: SFC to UNL

Comments:

- a. PfA APAC-I 19/10-ATM circulated to HQ on 10 Jun 2019. Revised PfA pending.

FIR/UIR Location Indicator	Lateral limits coordinates	Remarks
1	2	3
Taipei FIR (RCAA)	A line joining 290000N 1240000E 290000N 1254900E 260000N 1250000E 253000N 1240000E 233000N 1240000E 210000N 1213000E 210000N 1173000E 230000N 1173000E 250000N 1200000E 262908N 1212656E 290000N 1240000E	Vertical limits: SFC to UNL

Comments:

- a. Historical records show that Taipei FIR’s eastern boundary is a straight line joining 290000N 1240000E to 233000N 1240000E. The data submitted by China is 290000N 1240000E, 290000N 1254900E, 260000N 1250000E, 253000N 1240000E, 2330000N 1240000E.

FIR/UIR Location Indicator	Lateral limits coordinates	Remarks
1	2	3
<p>Ujung Pandang (WAAF)</p>	<p>033000N 1410000E 061914S 1410000E thence following the national boundary of Indonesia/Papua New Guinea to 065334S 1410106E 093700S 1410200E 095000S 1410000E 095000S 1394000E 070000S 1350000E 092000S 1265000E 120000S 1232000E 120000S 1143000E 082000S 1102300E 030000S 1102300E 011300N 1133500E thence following the national boundary of Indonesia/Malaysia to 040000N 1180000E 040000N 1323200E 033000N 1330000E 033000N 1410000E.</p>	<p>Vertical limits: SFC to UNL</p>

Comments:

- a. PfA APAC-I 20/33-ATM approved by President of the Council and data incorporated into eANP, Vol. I.

FIR/UIR Location Indicator	Lateral limits coordinates	Remarks
1	2	3
Ulanbaatar FIR (ZMUB)	495044.4N 1164249.3E thence following the national boundary to 495044.4N 1164249.3E.	Vertical limits: SFC to UNL

Comments:

- a. PfA APAC-I 19/21-ATM approved by President of the Council and data incorporated into eANP, Vol. I.

FIR/UIR Location Indicator	Lateral limits coordinates	Remarks
1	2	3
<p>Urumqi FIR (ZWUQ)</p>	<p>A line joining 425500N 0962014E 414800N 0950800E 382100N 0901300E 362500N 0872300E 321806N 0840318E 302630N 0813730E thence following the national boundary of the People’s Republic of China to N425500N 0962014E.</p>	<p>Vertical limits: SFC to UNL</p>

Comments:

- a. PfA submitted. Validation of the coordinates in progress.

FIR/UIR Location Indicator	Lateral limits coordinates	Remarks
1	2	3
Vientiane FIR (VLVT)	170000N 1063258E thence following the national boundary to 170000N 1063258E.	Vertical limits: SFC to UNL

Comments:

- a. PfA APAC-I 20/44-ATM approved by President of the Council and data incorporated into eANP, Vol. I.

FIR/UIR Location Indicator	Lateral limits coordinates	Remarks
1	2	3
Wuhan FIR (ZHWH)	A line joining 364000N 1152400E 351448N 1152700E 343100N 1155430E 325430N 1154848E 300500N 1155600E 290200N 1143400E 292300N 1130712E 293100N 1092400E 315400N 1093100E 333200N 1105200E 340500N 1102900E 343200N 1101500E 360400N 1134836E 361900N 1143000E 364000N 1152400E.	Vertical limits: SFC to UNL

Comments:

- a. PfA APAC-I 20/14-ATM approved by President of the Council and data incorporated into eANP, Vol. I.

FIR/UIR Location Indicator	Lateral limits coordinates	Remarks
1	2	3
Yangon FIR (VYYF)	A line joining 100000N 0983000E 100000N 0942500E 133000N 0942500E 140000N 0920000E 210000N 0920000E 215700N 0923200E thence following the national boundary to 100000N 0983000E.	Vertical limits: SFC to UNL

Comments:

- a. Coordination required with Bangladesh and Thailand for re-alignment of Yangon FIR.

APPENDIX C

**SEARCH AND RESCUE REGIONS (SRR) IN THE ASIA/PACIFIC REGIONS
– WORKING DRAFT**

EXPLANATION OF THE TABLE

- Column 1. Name of the SRR
- Column 2. Description of SRR lateral limits
- Column 3. Remarks — additional information, if necessary.

Name of SRR	Lateral limits coordinates	Remarks
1	2	3
Alameda SRR	A line joining 323300N 1170500W 304500N 1205000W 300000N 1200000W 070900N 1200000W 420000N 1241300W thence along the Pacific coastline to 323300N 1170500W.	

Comments:

- a. PfA submitted, verification in progress.
- b. The four different United States Rescue Coordination Centers (RCC), Honolulu, Juneau, Alameda and Seattle, provide SAR services in the Oakland Oceanic FIR. In order to provide a complete description of SAR services in the APAC Region, the Seattle SRR is proposed to be included in the APAC ANP.

Name of SRR	Lateral limits coordinates	Remarks
1	2	3
Australia SRR	140000S 1611500E 174000S 1630000E 450000S 1630000E 900000S 0000000W/E (South Pole) 060000S 0750000E 020000S 0780000E 020000S 0920000E 120000S 1070000E 120000S 1232000E 092000S 1265000E 070000S 1350000E 095000S 1394000E 095000S 1410000E 093700S 1410200E 091542S 1420330E 091248S 1420624E 091154S 1420836E 091200S 1421018E 091124S 1421254E 091136S 1421406E 091354S 1421624E 091606S 1422042E 092206S 1422942E 092148S 1423130E 092236S 1423330E 092124S 1423530E 092024S 1424142E 092018S 1424354E 091924S 1424818E 090800S 1435230E 092400S 1441400E	Vertical limits: SFC to UNL

	095634S 1440521E 100515S 1435852E 100850S 1435711E 101751S 1435445E 102244S 1435525E 102638S 1435424E 103110S 1435441E 103457S 1435536E 104114S 1435810E 104641S 1435959E 105205S 1440046E 105900S 1440200E 110224S 1440233E 110637S 1440351E 111107S 1440421E 111413S 1440338E 111510S 1440307E 112935S 1440131E 113000S 1440136E 114330S 1440420E 120000S 1440000E 120000S 1550000E 140000S 1550000E 140000S 1611500E.	
--	---	--

Comments:

- a. PfA APAC-I 21/22-ATM approved by President of the Council and data incorporated into eANP, Vol. I.

Name of SRR	Lateral limits coordinates	Remarks
1	2	3
Bali SRR	<i>No information on record, not all coordinates available on ICAO GIS.</i>	

Comments:

- a. Ujung Pandang FIR and Bali SRR data not aligned.

Name of SRR	Lateral limits coordinates	Remarks
1	2	3
Bangkok SRR	113900N 1025430E 100000N 1021500E 070000N 1030000E 064500N 1024000E 061500N 1021500E thence following the national boundary to 063000N 0993000E 071500N 0980000E 100000N 0963000E 095600N 0983300E thence following the national boundary to 113900N 1025430E.	

Comments:

- a. Pending confirmation of FIR data.

Name of SRR	Lateral limits coordinates	Remarks
1	2	3
Beijing SRR	A line joining 452317N 1152115E 431442N 1173100E 421500N 1180500E 395400N 1192100E 393000N 1195200E 381500N 1200000E 380700N 1193300E 372912N 1173000E 364000N 1152400E 361900N 1143000E 360400N 1134836E 343200N 1101500E 353200N 1101800E 372800N 1104400E 382200N 1103600E 384400N 1094100E 392600N 1083000E 401842N 1070012E 404300N 1055500E 414451N 1051345E thence following the national boundary of the People's Republic of China to 452317N 1152115E.	Vertical limits: SFC to UNL

Comments:

- a. PfA APAC-I 19/29-ATM approved by President of the Council and data incorporated into eANP, Vol. I.

Name of SRR	Lateral limits coordinates	Remarks
1	2	3
Biak SRR	<i>No information on record, not all coordinates available on ICAO GIS.</i>	

Comments:

- a. Ujung Pandang FIR and Bali SRR data not aligned.

Name of SRR	Lateral limits coordinates	Remarks
1	2	3
<p>Bombay SRR</p>	<p>A line joining 250001N 0790455E 231049N 0800334E 222850N 0802116E 213009N 0803537E 184300N 0820000E 194300N 0771000E 191900N 0760000E 180000N 0760000E 164000N 0760000E 163600N 0752800E 162600N 0741100E 162200N 0733400E 161700N 0730000E 150000N 0733500E 150000N 0720000E 073000N 0720000E 073000N 0700000E 030500N 0700000E 000000N 0680000E 060000S 0680000E 060000S 0600000E 194800N 0600000E 233000N 0643000E then eastwards along 233000N parallel until it meets the Indian coastline at 233000N 682300E then northwards along the coastline to 234000N 0681000E</p>	

	then along the common border between India and Pakistan to 250000N 0705500E 250001N 0790455E.	
--	--	--

Comments:

- a. Draft SRR PfA forwarded to India. Awaiting submission.

Name of SRR	Lateral limits coordinates	Remarks
1	2	3
Calcutta SRR	A line joining 210000N 0920000E 140000N 0920000E 154200N 0855400E 184100N 0824900E 184300N 0820000E 213009N 0803537E 222850N 0802116E 231049N 0800334E 250001N 0790455E 250801N 0785955E 253601N 0793554E 251701N 0794954E 262401N 0801154E 264531N 0805340E 270922N 0813300E 273424N 0824443E thence following the national boundary to 213800N 0891000E a line joining 213800N 0891000E 210000N 0920000E.	

Comments:

- a. Pending confirmation of FIR data.

Name of SRR	Lateral limits coordinates	Remarks
1	2	3
Colombo SRR	A line joining 060000N 0920000E 020000S 0920000E 020000S 0780000E 060000N 0780000E 100000N 0800000E 100000N 0820000E 060000N 0920000E.	

Comments:

- a. Draft SRR PfA forwarded to Sri Lanka. Awaiting submission.

Name of SRR	Lateral limits coordinates	Remarks
1	2	3
Delhi SRR	A line joining 273424N 0824443E 270922N 0813300E 264531N 0805340E 262401N 0801154E 251701N 0794954E 253601N 0793554E 250801N 0785955E 250001N 0790455E 250000N 0705500E thence following the national boundary to 273424N 0824443E.	

Comments:

- a. Draft SRR PfA forwarded to India. Awaiting submission.

Name of SRR	Lateral limits coordinates	Remarks
1	2	3
Dhaka FIR	<i>Details pending.</i>	

Comments:

- a. Pending confirmation of FIR data.

Name of SRR	Lateral limits coordinates	Remarks
1	2	3
Guangzhou SRR	A line joining 290200N 1143400E 264200N 1135700E 260300N 1140700E 254600N 1145224E 250530N 1152500E 244024N 1152430E 242200N 1164200E 234200N 1171100E 233000N 1173000E 230000N 1173000E 222430N 1154000E 222430N 1143000E thence following the Hong Kong Special Administrative Region boundary to 222130N 1135200E a line joining 222130N 1135200E 193000N 1113000E 203000N 1113000E 203000N 1080300E 211235N 1081231E thence following the national boundary of the People’s Republic of China to 231145N 1053230E a line joining 231145N 1053230E 243900N 1054800E 254200N 1073900E 263500N 1091900E	

	284700N 1092300E 293100N 1092400E 292300N 1130712E 290200N 1143400E.	
--	---	--

Comments:

- a. PfA on hold.

Name of SRR	Lateral limits coordinates	Remarks
1	2	3
Ha Noi SRR	211235N 1081231E 203000N 1080300E 195733N 1075547E 191604N 1071123E 182028N 1074053E 172510N 1084437E 171300N 1080000E 170000N 1071800E 170000N 1063258E thence following national boundary to 212812.5N 1080604.3E 212801.7N 1080601.6E 212750.1N 1080557.7E 212739.5N 1080551.5E 212728.2N 1080539.9E 212723.1N 1080538.8E 212708.2N 1080543.7E 211632N 1080805E 211235N 1081231E.	

Comments:

- a. Pending confirmation of FIR data.

Name of SRR	Lateral limits coordinates	Remarks
1	2	3
Ho Chi Minh SRR	143000N 1140000E 103000N 1140000E 070000N 1080000E 070000N 1030000E 090000N 1024000E 102200N 1034400E thence following national boundary to 170000N 1063258E 171300N 1080000E 170000N 1071800E 172510N 1084437E 143000N 1120000E 143000N 1140000E.	

Comments:

- a. Pending confirmation of FIR data.

Name of SRR	Lateral limits coordinates	Remarks
1	2	3
<p>Hong Kong SRR</p>	<p>A line joining 230000N 1173000E 210000N 1173000E 164000N 1140000E 193000N 1113000E 222130N 1135200E thence following the Hong Kong Special Administrative Region boundary to 222430N 1143000E a line joining 222430N 1143000E 222430N 1154000E 230000N 1173000E.</p>	

Comments:

- a. SRR PfA submitted. FIR PfA on hold.

Name of SRR	Lateral limits coordinates	Remarks
1	2	3
Honiara SRR	103000S 1664500E 114800S 1665200E 140000S 1630000E 140000S 1550000E 071900S 1550000E 065533S 1553808E 065533S 1554137E 065050S 155523E 064104S 1560136E 063950S 1560223E 063300S 1560209E 045000S 1590000E 045000S 1600000E 103000S 1664500E.	

Comments:

- a. Draft SRR PfA forwarded to Solomon Islands. Pending submission.

Name of SRR	Lateral limits coordinates	Remarks
1	2	3
Honolulu SRR	A line joining 400000N 1650000E 270000N 1650000E 270000N 1550000E 210000N 1550000E 210000N 1300000E 070000N 1300000E 033000N 1330000E 033000N 1410000E 000000N 1410000E 000000N 1600000E 033000N 1600000E 033000N 1800000W 050000S 1800000W 050000S 1550000W 033000N 1450000W 033000N 1200000W 070900N 1200000W 400000N 1500000W 400000N 1650000E	

Comments:

- a. PfA submitted, verification in progress.
- b. The four different United States Rescue Coordination Centers (RCC), Honolulu, Juneau, Alameda and Seattle, provide SAR services in the Oakland Oceanic FIR. In order to provide a complete description of SAR services in the APAC Region, the Seattle SRR is proposed to be included in the APAC ANP.

Name of SRR	Lateral limits coordinates	Remarks
1	2	3
Jakarta SRR	011300N 1133500E 030000S 1102300E 082000S 1102300E 120000S 1143000E 120000S 1070000E 020000S 0920000E 060000N 0920000E 060000N 0942500E 060000N 0973000E 013900N 1021000E 011300N 1033000E 011408N 1033142E 011200N 1033900E 011046N 1034015E 010800N 1034500E 011500N 1040000E 011800N 1043000E 012921N 1043441E 011947N 1044606E 021838N 1052205E 023641N 1051311E 024348N 1050854E 025010N 1051210E 031453N 1052619E 031727N 1052959E 033045N 1055130E 041312N 1071743E 043820N 1073315E 045203N 1074625E 045904N 1075525E 050012N 1080132E	Vertical limits: SFC to UNL Remarks: For portions of the Jakarta FIR where the provision of air traffic services is delegated by Indonesia to Singapore, as documented in APAC ANP Volume I, Part IV, ATM Table I-1, Search and rescue (SAR) services are provided jointly by Indonesia and Singapore.

	045700N 1081619E 025050N 1091629E 021500N 1083000E 010000N 1083000E 010000N 1085400E thence along Kalimantan west coast to the national boundary of Indonesia/Malaysia to 011300N 1133500E.	
--	--	--

Comments:

- a. PFA APAC-I 23/18-ATM approved by President of the Council and data incorporated into eANP, Vol. I.

Name of SRR	Lateral limits coordinates	Remarks
1	2	3
Kabul SRR	371105N 0674723E thence following the national boundary to 371105N 0674723E.	

Comments:

- a. Draft SRR PfA forwarded to Afghanistan. Pending submission.

Name of SRR	Lateral limits coordinates	Remarks
1	2	3
<p>Juneau SRR</p>	<p>A line joining 544230N 1303630W 543927N 1324100W 541300N 1345700W 540000N 1360000W 544000N 1360000W 544000N 1400000W 482000N 1450000W 400000N 1500000W 400000N 1650000E 430000N 1650000E 500500N 1590000E 540000N 1690000E 544900N 1701200E 600000N 1800000W 640300N 1721200W 650000N 1685824W North Pole 693947N 1410000W thence north along the United States/Canada National border to 544230N 1303630W.</p>	

Comments:

- a. PfA submitted verification in progress.
- b. The four different United States Rescue Coordination Centers (RCC), Honolulu, Juneau, Alameda and Seattle, provide SAR services in the Oakland Oceanic FIR. In order to provide a complete description of SAR services in the APAC Region, the Seattle SRR is proposed to be included in the APAC ANP.

Name of SRR	Lateral limits coordinates	Remarks
1	2	3
<p>Karachi SRR</p>	<p>300000N 0733500E thence following the national boundary to 234000N 0681000E 233000N 0682300E 233000N 0643000E 233000N 0612000E 244000N 0612000E 251040N 0613550E thence following the national boundary to 300000N 0661900E 300000N 0733500E.</p>	

Comments:

- a. Draft SRR PfA forwarded to Pakistan. Pending submission.

Name of SRR	Lateral limits coordinates	Remarks
1	2	3
Kathmandu SRR	302645N 0813744E thence following the national boundary to 302645N 0813744E.	Vertical limits: SFC to UNL

Comments:

- a. PfA APAC-I 21/03 circulated to ICAO HQ. Approved and incorporated into the ANP.

Name of SRR	Lateral limits coordinates	Remarks
1	2	3
Kota Kinabalu SRR	082500N 1163000E 073000N 1173000E 040000N 1200000E 040000N 1180000E thence along the national boundary of Malaysia and Indonesia to 010000N 1085400E 010000N 1083000E 021500N 1083000E 082500N 1163000E.	Vertical limits: SFC to UNL

Comments:

- a. PfA APAC-I 21/17-ATM approved by President of the Council and data incorporated into eANP, Vol. I.

Name of SRR	Lateral limits coordinates	Remarks
1	2	3
Kuala Lumpur SRR	064500N 1024000E 045000N 1034400E 034000N 1034000E 023600N 1044500E 012000N 1042000E thence along 012000N to the national boundary of Malaysia/Singapore; thence along the national boundary of Malaysia/Singapore to 011700N 1033600E 011300N 1033000E 013900N 1021000E 060000N 0973000E 060000N 0942500E 100000N 0942500E 100000N 0963000E 071500N 0980000E 063000N 0993000E thence along the national boundary of Malaysia/Thailand to 061500N 1021500E 064500N 1024000E.	Vertical limits: SFC to UNL

Comments:

- a. PfA APAC-I 21/16-ATM approved by President of the Council and data incorporated into eANP, Vol. I.

Name of SRR	Lateral limits coordinates	Remarks
1	2	3
Kunming SRR	A line joining 315400N 1093100E 293100N 1092400E 284700N 1092300E 263500N 1091900E 254200N 1073900E 243900N 1054800E 231145N 1053230E thence following the national boundary of the People’s Republic of China to 302630N 0813730E; a line joining 302630N 0813730E 321806N 0840318E 362500N 0872300E 360200N 0890100E 325200N 0915500E 320600N 0970000E 314900N 0983500E 325500N 1014200E 333500N 1035300E 322700N 1054900E 321400N 1072400E 315400N 1093100E.	

Comments:

- a. PfA submitted to Regional Office. Pending confirmation of FIR data.

Name of SRR	Lateral limits coordinates	Remarks
1	2	3
Lahore SRR	A line joining 300000N 0733500E 300000N 0661900E thence following the national boundary to 300000N 0733500E.	

Comments:

- a. Draft SRR PfA forwarded to Pakistan. Pending confirmation of FIR data.

Name of SRR	Lateral limits coordinates	Remarks
1	2	3
<p>Lanzhou SRR</p>	<p>A line joining 414451N 1051345E 404300N 1055500E 401842N 1070012E 392600N 1083000E 384400N 1094100E 382200N 1103600E 372800N 1104400E 353200N 1101800E 343200N 1101500E 340500N 1102900E 333200N 1105200E 315400N 1093100E 321400N 1072400E 322700N 1054900E 333500N 1035300E 325500N 1014200E 314900N 0983500E 320600N 0970000E 325200N 0915500E 360200N 0890100E 362500N 0872300E 382100N 0901300E 414800N 0950800E 425500N 0962014E thence following the national boundary of the People’s Republic of China to 414451N 1051345E.</p>	<p>Vertical limits: SFC to UNL</p>

Comments:

- a. PfA APAC-I 21/18-ATM approved by President of the Council and data incorporated into eANP, Vol. I.

Name of SRR	Lateral limits coordinates	Remarks
1	2	3
<p>Madras SRR</p>	<p>A line joining 133000N 0942500E 060000N 0942500E 060000N 0920000E 100000N 0820000E 100000N 0800000E 060000N 0780000E 060000N 0740000E 073000N 0740000E 073000N 0720000E 150000N 0720000E 150000N 0733500E 161700N 0730000E 162200N 0733400E 162600N 0741100E 163600N 0752800E 164000N 0760000E 180000N 0760000E 191900N 0760000E 194300N 0771000E 184300N 0820000E 184100N 0824900E 154200N 0855400E 140000N 0920000E 133000N 0942500E.</p>	

Comments:

- a. Draft SRR PfA forwarded to India. Pending submission.

Name of SRR	Lateral limits coordinates	Remarks
1	2	3
Male SRR	A line joining 060000N 0780000E 020000S 0780000E 060000S 0750000E 060000S 0680000E 000000N/S 0680000E 030500N 0700000E 073000N 0700000E 073000N 0720000E 073000N 0740000E 060000N 0740000E 060000N 0780000E.	Vertical limits: SFC to UNL

Comments:

- a. PfA APAC-I 21/04 circulated to ICAO HQ. Approved and incorporated into the ANP.

Name of SRR	Lateral limits coordinates	Remarks
1	2	3
Manila SRR	A line joining 210000N 1300000E 070000N 1300000E 040000N 1323200E 040000N 1200000E 073000N 1173000E 082500N 1163000E 103000N 1140000E 164000N 1140000E 210000N 1173000E 210000N 1300000E.	

Comments:

- a. PfA APAC-I 21/11 circulated to ICAO HQ. Further coordination required with adjacent States.

Name of SRR	Lateral limits coordinates	Remarks
1	2	3
Nadi SRR	A line joining 033000N 180000E 050000S 180000W 050000S 171000W 153245.1S 1754031.2W 250000S 180000E 250000S 171250E 280000S 168000E 300000S 163000E 174000S 163000E 140000S 161150E 140000S 163000E 100000S 170000E 033000N 170000E 033000N 180000E.	

Comments:

- a. Draft SRR PfA forwarded to Fiji. Pending submission.

Name of SRR	Lateral limits coordinates	Remarks
1	2	3
Nauru SRR	033000N 1700000E 100000S 1700000E 114800S 1665200E 103000S 1664500E 045000S 1600000E 033000N 1600000E 033000N 1700000E.	Vertical limits: SFC to UNL

Comments:

- a. PFA APAC-1 21/10 circulated to ICAO HQ. Approved and incorporated into the ANP.

Name of SRR	Lateral limits coordinates	Remarks
1	2	3
New Zealand SRR	A line joining 250000S 1630000E 250000S 1800000E 153300S 1754100W 050000S 1710000W 050000S 1570000W 300000S 1570000W 300000S 1310000W 900000S 1310000W 250000S 1630000E	

Comments:

- a. PfA submitted, pending coordination with Fiji.

Name of SRR	Lateral limits coordinates	Remarks
1	2	3
Phnom Penh SRR	102200N 1034400E 090000N 1024000E 070000N 1030000E 100000N 1021500E 113900N 1025430E thence following the national boundary to 102200N 1034400E.	

Comments:

- a. Pending confirmation of FIR data.

Name of SRR	Lateral limits coordinates	Remarks
1	2	3
Port Moresby SRR	000000N/S 1600000E 045000S 1600000E 045000S 1590000E 063300S 1560209E 063950S 1560223E 064104S 1560136E 065050S 1555523E 065533S 1554137E 065533S 1553808E 071900S 1550000E 120000S 1550000E 120000S 1440000E 114330S 1440420E 113000S 1440136E 112935S 1440131E 111510S 1440307E 111413S 1440338E 111107S 1440421E 110637S 1440351E 110224S 1440233E 105900S 1440200E 105205S 1440046E 104641S 1435959E 104114S 1435810E 103457S 1435536E 103110S 1435441E 102638S 1435424E 102244S 1435525E 101751S 1435445E 100850S 1435711E 100515S 1435852E 095634S 1440521E	Vertical limits: SFC to UNL

	092400S 1441400E 090800S 1435230E 091924S 1424818E 092018S 1424354E 092024S 1424142E 092124S 1423530E 092236S 1423330E 092148S 1423130E 092206S 1422942E 091606S 1422042E 091354S 1421624E 091136S 1421406E 091124S 1421254E 091200S 1421018E 091154S 1420836E 091248S 1420624E 091542S 1420330E 093700S 1410200E 065334S 1410106E thence following the Fly River to 061914S 1410000E 000000N/S 1410000E 000000N/S 1600000E.	
--	--	--

Comments:

- a. PfA APAC-I 21/06 circulated to ICAO HQ. Approved and incorporated into the ANP.

Name of SRR	Lateral limits coordinates	Remarks
1	2	3
Pyongyang SRR	414000N 1313100E 403000N 1355600E 383800N 1333900E 383800N 1282200E thence following the military demarcation line to 380000N 1240000E 395100N 1241000E thence following the national boundary to 421736N 1304148E	

Comments:

- a. Pending confirmation of FIR data.

Name of SRR	Lateral limits coordinates	Remarks
1	2	3
Sanya SRR	A line joining 203000N 1113000E 193000N 1113000E 164000N 1140000E 143000N 1140000E 143000N 1120000E 182028N 1074053E 191604N 1071123E 195733N 1075547E 203000N 1080300E 203000N 1113000E.	Vertical limits: SFC to UNL

Comments:

- a. PfA APAC-I 21/20-ATM approved by President of the Council and data incorporated into eANP, Vol..

Name of SRR	Lateral limits coordinates	Remarks
1	2	3
<p>Seattle SRR</p>	<p>A line joining 490007N 1224905W thence north along the Pacific coastline to; 420000N 1241300W 400000N 1500000W 482000N 1450000W 482000N 1280000W 483000N 1250000W 483000N 1244500W 481750N 1240040W 481426N 1234041W 481330N 1233225W 481704N 1231451W 482524N 1230651W 482714N 1230939W 483256N 1231309W 484135N 1231627W 484602N 1230032W 484953N 1230030W 490007N 1231921W 490007N 1224905W.</p>	<p>.</p>

Comments:

- a. PfA submitted, verification in progress.
- b. The four different United States Rescue Coordination Centers (RCC), Honolulu, Juneau, Alameda and Seattle, provide SAR services in the Oakland Oceanic FIR. In order to provide a complete description of SAR services in the APAC Region, the Seattle SRR is proposed to be included in the APAC ANP

Name of SRR	Lateral limits coordinates	Remarks
1	2	3
Shanghai SRR	A line joining 380000N 1240000E 323000N 1240000E 323000N 1265000E 290000N 1254900E 290000N 1240000E 262908N 1212656E 250000N 1200000E 230000N 1173000E 233000N 1173000E 234200N 1171100E 242200N 1164200E 244024N 1152430E 250530N 1152500E 254600N 1145224E 260300N 1140700E 264200N 1135700E 290200N 1143400E 300500N 1155600E 325430N 1154848E 343100N 1155430E 351448N 1152700E 364000N 1152400E 372912N 1173000E 380700N 1193300E 381500N 1200000E 381500N 1230000E 380000N 1240000E.	

Comments:

- a. SRR PfA submitted to Regional Office. Pending confirmation of FIR data.

Name of SRR	Lateral limits coordinates	Remarks
1	2	3
Shenyang SRR	394941N 1241006E 380000N 1240000E 381500N 1230000E 381500N 1200000E 393000N 1195200E 395400N 1192100E 421500N 1180500E 431442N 1173100E 452317N 1152115E thence following the national boundary of the People's Republic of China to 394941N 1241006E.	

Comments:

- a. SRR PfA submitted to Regional Office. Pending confirmation of FIR data.

Name of SRR	Lateral limits coordinates	Remarks
1	2	3
Singapore SRR	082500N 1163000E 025050N 1091629E 045700N 1081619E 050012N 1080132E 045904N 1075525E 045203N 1074625E 043820N 1073315E 041312N 1071743E 033045N 1055130E 031727N 1052959E 031453N 1052619E 025010N 1051210E 024348N 1050854E 023641N 1051311E 021838N 1052205E 011947N 1044606E 012921N 1043441E 011800N 1043000E 011500N 1040000E 010800N 1034500E 011046N 1034015E 011200N 1033900E 011408N 1033142E 011700N 1033600E thence east along the national boundary of Singapore/Malaysia, thence along 012000N to 012000N 1042000E 023600N 1044500E 034000N 1034000E 045000N 1034400E 064500N 1024000E	Vertical limits: SFC to UNL

	07000N 103000E 07000N 108000E 10300N 114000E 08250N 116300E.	
--	---	--

Comments:

- a. PfA APAC-I 23/18-ATM approved by President of the Council and data incorporated into eANP, Vol. I.

Name of SRR	Lateral limits coordinates	Remarks
1	2	3
Incheon SRR	383800N 1333900E 380000N 1330000E 373000N 1330000E 344000N 1291000E 323000N 1273000E 323000N 1265000E 300000N 1252500E 300000N 1240000E 380000N 1240000E 380000N 1245100E following the national boundary from 380000N 1245100E to 383800N 1282200E a line joining 383800N 1282200E 383800N 1333900E.	

Comments:

- a. SRR PfA submitted. Naming of Incheon SRR to replace Taegu SRR. Pending confirmation of FIR data.

Name of SRR	Lateral limits coordinates	Remarks
1	2	3
Tahiti SRR	033000N 1200000W 300000S 1200000W 300000S 1570000W 050000S 1570000W 050000S 1550000W 033000N 1450000W 033000N 1200000W.	

Comments:

- a. Pending confirmation of FIR data.

Name of SRR	Lateral limits coordinates	Remarks
1	2	3
Taibei SRR	A line joining 290000N 1240000E 290000N 1254900E 260000N 1250000E 253000N 1240000E 233000N 1240000E 210000N 1213000E 210000N 1173000E 230000N 1173000E 250000N 1200000E 262908N 1212656E 290000N 1240000E.	

Comments:

- a. SRR PfA submitted to Regional Office. Pending confirmation of FIR.

Name of SRR	Lateral limits coordinates	Remarks
1	2	3
Tokyo SRR	500500N 1590000E 454200N 1625500E 430000N 1650000E 270000N 1650000E 270000N 1550000E 210000N 1550000E 210000N 1213000E 233000N 1240000E 300000N 1240000E 300000N 1252500E 323000N 1265000E 323000N 1273000E 344000N 1291000E 373000N 1330000E 380000N 1330000E 383800N 1333900E 403000N 1355600E 454500N 1400000E 454500N 1420000E 443000N 1454000E then between Hokkaido and Kunashiri Islands from 443000N 1454000E to 432000N 1455000E 430000N 1465000E 450000N 1500000E 500500N 1590000E.	

Comments:

- a. Pending confirmation of FIR data.

Name of SRR	Lateral limits coordinates	Remarks
1	2	3
Ulaanbaatar SRR	495044.4N 1164249.3E thence following the national boundary to 495044.4N 1164249.3E.	Vertical limits: SFC to UNL

Comments:

- a. PfA APAC-I 21/09 approved by President of the Council and data incorporated into eANP, Vol. I.

Name of SRR	Lateral limits coordinates	Remarks
1	2	3
Urumqi SRR	A line joining 425500N 0962014E 414800N 0950800E 382100N 0901300E 362500N 0872300E 321806N 0840318E 302630N 0813730E thence following the national boundary of the People’s Republic of China to N425500N 0962014E.	

Comments:

- a. SRR PfA submitted to Regional Office. Pending confirmation of FIR data.

Name of SRR	Lateral limits coordinates	Remarks
1	2	3
Vientiane SRR	170000N 1063258E thence following the national boundary to 170000N 1063258E.	Vertical limits: SFC to UNL

Comments:

- a. PfA APAC-I 21/05 approved by President of the Council and data incorporated into eANP, Vol. I.

Name of SRR	Lateral limits coordinates	Remarks
1	2	3
<p>Wuhan SRR</p>	<p>A line joining 364000N 1152400E 351448N 1152700E 343100N 1155430E 325430N 1154848E 300500N 1155600E 290200N 1143400E 292300N 1130712E 293100N 1092400E 315400N 1093100E 333200N 1105200E 340500N 1102900E 343200N 1101500E 360400N 1134836E 361900N 1143000E 364000N 1152400E.</p>	<p>Vertical limits: SFC to UNL</p>

Comments:

- a. PfA APAC-I 21/21-ATM approved by President of the Council and data incorporated into eANP, Vol. I.

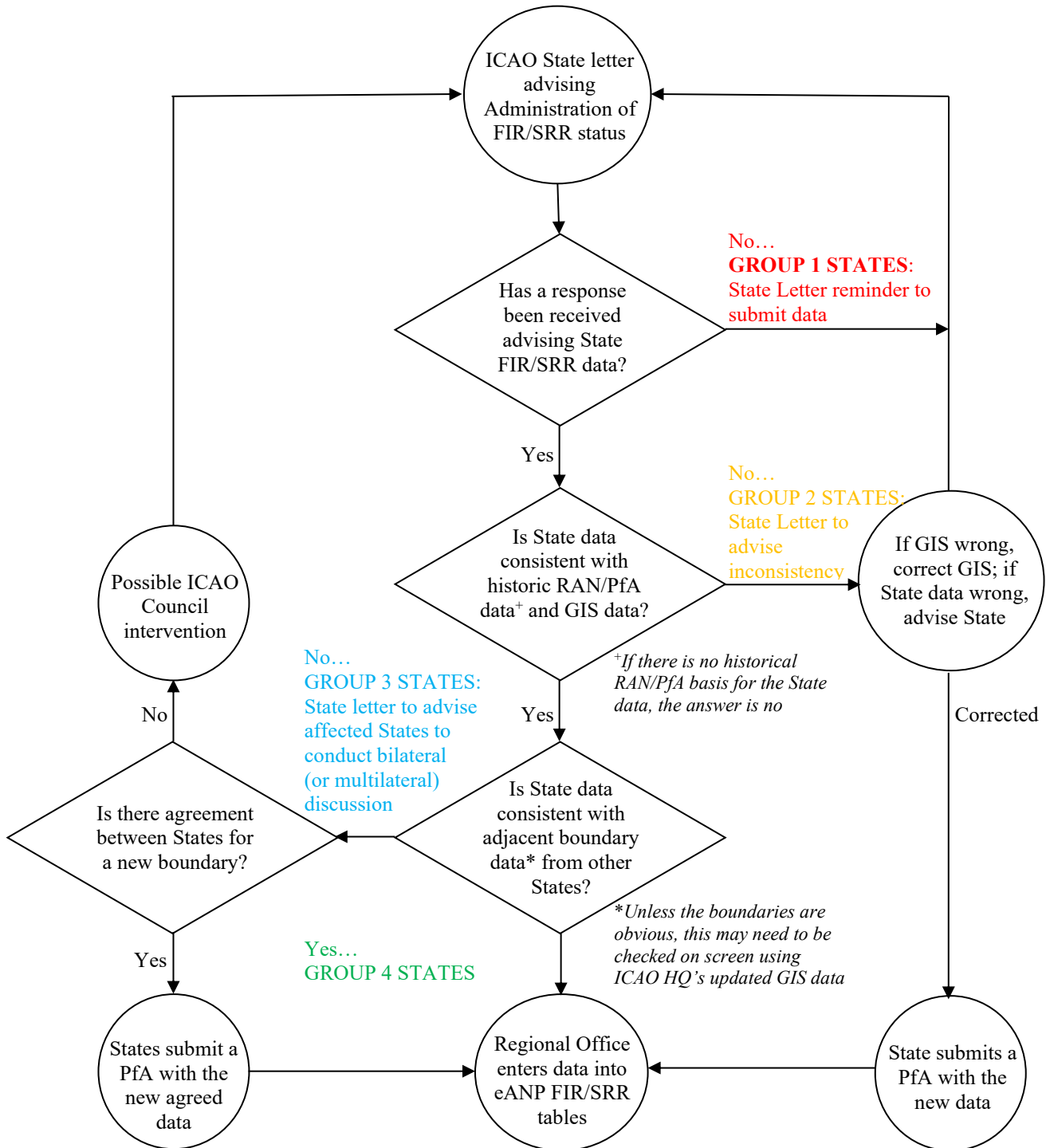
Name of SRR	Lateral limits coordinates	Remarks
1	2	3
Yangon SRR	A line joining 100000N 0983000E 100000N 0942500E 133000N 0942500E 140000N 0920000E 210000N 0920000E 215700N 0923200E thence following the national boundary to 100000N 0983000E.	

Comments:

- a. Pending confirmation of FIR data.

APPENDIX D

ANP FIR/SRR REVIEW PROCESS FLOW DIAGRAM



— END —